

World Journal of *Gastrointestinal Surgery*

World J Gastrointest Surg 2021 March 27; 13(3): 222-329



Contents

Monthly Volume 13 Number 3 March 27, 2021

OPINION REVIEW

- 222 Paraesophageal hernia and iron deficiency anemia: Mechanisms, diagnostics and therapy
Dietrich CG, Hübner D, Heise JW

REVIEW

- 231 Gastroenteropancreatic neuroendocrine neoplasms: A clinical snapshot
Fernandez CJ, Agarwal M, Pottakkat B, Haroon NN, George AS, Pappachan JM

ORIGINAL ARTICLE

Retrospective Study

- 256 Prognostic predictors in patients with sepsis after gastrointestinal tumor surgery: A retrospective study
Chen RX, Wu ZQ, Li ZY, Wang HZ, Ji JF
- 267 Retrospective research of neoadjuvant therapy on tumor-downstaging, post-operative complications, and prognosis in locally advanced rectal cancer
Li WC, Zhao JK, Feng WQ, Miao YM, Xu ZF, Xu ZQ, Gao H, Sun J, Zheng MH, Zong YP, Lu AG
- 279 Combination of preoperative fibrinogen and D-dimer as a prognostic indicator in pancreatic ductal adenocarcinoma patients undergoing R0 resection
Zhang LP, Ren H, Du YX, Zheng XH, Zhang ZM, Wang CF
- 303 Colonic pouch confers better bowel function and similar postoperative outcomes compared to straight anastomosis for low rectal cancer
Chen ZZ, Li YD, Huang W, Chai NH, Wei ZQ

CASE REPORT

- 315 Giant hepatic extra-gastrointestinal stromal tumor treated with cytoreductive surgery and adjuvant systemic therapy: A case report and review of literature
Fernandes MR, Ghezzi CLA, Grezzana-Filho TJM, Feier FH, Leipnitz I, Chedid AD, Cerski CTS, Chedid MF, Krueel CRP
- 323 Functional anatomical hepatectomy guided by indocyanine green fluorescence imaging in patients with localized cholestasis: Report of four cases
Han HW, Shi N, Zou YP, Zhang YP, Lin Y, Yin Z, Jian ZX, Jin HS

ABOUT COVER

Editorial Board Member, Vasile Virgil Bintintan, MD, PhD, Doctor, Senior Lecturer, Senior Researcher, Surgeon, Department of Surgery, "Tuliu Hatieganu" University of Medicine and Pharmacy Cluj-Napoca, Cluj Napoca 400006, Romania. vasile.bintintan@umfcluj.ro

AIMS AND SCOPE

The primary aim of *World Journal of Gastrointestinal Surgery* (WJGS, *World J Gastrointest Surg*) is to provide scholars and readers from various fields of gastrointestinal surgery with a platform to publish high-quality basic and clinical research articles and communicate their research findings online.

WJGS mainly publishes articles reporting research results and findings obtained in the field of gastrointestinal surgery and covering a wide range of topics including biliary tract surgical procedures, biliopancreatic diversion, colectomy, esophagectomy, esophagostomy, pancreas transplantation, and pancreatectomy, etc.

INDEXING/ABSTRACTING

The WJGS is now abstracted and indexed in Science Citation Index Expanded (SCIE, also known as SciSearch®), Current Contents/Clinical Medicine, Journal Citation Reports/Science Edition, PubMed, and PubMed Central. The 2020 edition of Journal Citation Reports® cites the 2019 impact factor (IF) for WJGS as 1.863; IF without journal self cites: 1.824; Ranking: 109 among 210 journals in surgery; Quartile category: Q3; Ranking: 77 among 88 journals in gastroenterology and hepatology; and Quartile category: Q4.

RESPONSIBLE EDITORS FOR THIS ISSUE

Production Editor: Jia-Hui Li; Production Department Director: Xiang Li; Editorial Office Director: Ya-Juan Ma.

NAME OF JOURNAL

World Journal of Gastrointestinal Surgery

ISSN

ISSN 1948-9366 (online)

LAUNCH DATE

November 30, 2009

FREQUENCY

Monthly

EDITORS-IN-CHIEF

Shu-You Peng, Varut Lohsiriwat, Jin Gu

EDITORIAL BOARD MEMBERS

<https://www.wjgnet.com/1948-9366/editorialboard.htm>

PUBLICATION DATE

March 27, 2021

COPYRIGHT

© 2021 Baishideng Publishing Group Inc

INSTRUCTIONS TO AUTHORS

<https://www.wjgnet.com/bpg/gerinfo/204>

GUIDELINES FOR ETHICS DOCUMENTS

<https://www.wjgnet.com/bpg/gerinfo/287>

GUIDELINES FOR NON-NATIVE SPEAKERS OF ENGLISH

<https://www.wjgnet.com/bpg/gerinfo/240>

PUBLICATION ETHICS

<https://www.wjgnet.com/bpg/gerinfo/288>

PUBLICATION MISCONDUCT

<https://www.wjgnet.com/bpg/gerinfo/208>

ARTICLE PROCESSING CHARGE

<https://www.wjgnet.com/bpg/gerinfo/242>

STEPS FOR SUBMITTING MANUSCRIPTS

<https://www.wjgnet.com/bpg/gerinfo/239>

ONLINE SUBMISSION

<https://www.f6publishing.com>



Functional anatomical hepatectomy guided by indocyanine green fluorescence imaging in patients with localized cholestasis: Report of four cases

Hong-Wei Han, Ning Shi, Yi-Ping Zou, Yuan-Peng Zhang, Ye Lin, Zi Yin, Zhi-Xiang Jian, Hao-Sheng Jin

ORCID number: Hong-Wei Han 0000-0002-8410-4389; Ning Shi 0000-0001-8546-3802; Yi-Ping Zou 0000-0003-2880-2147; Yuan-Peng Zhang 0000-0002-3681-3930; Ye Lin 0000-0002-4032-964X; Zi Yin 0000-0003-2208-6717; Zhi-Xiang Jian 0000-0002-7258-352X; Hao-Sheng Jin 0000-0001-7554-7551.

Author contributions: Jin HS and Shi N were the patients' surgeons and designed the research; Han HW and Shi N reviewed the literature and contributed to the drafting of the manuscript; Zou YP and Zhang YP collected the surgical data and video recordings; Han HW and Lin Y processed the operation screenshots; Yin Z was responsible for the language editing and revision of the manuscript; Jian ZX and Jin HS supervised the revision of the manuscript; all authors took part in the final approval for the version to be submitted.

Supported by National Natural Science Foundation of China, No. 81972792.

Informed consent statement:

Informed written consent was obtained from the patients for publication of this report and any accompanying images.

Hong-Wei Han, Hao-Sheng Jin, The Second School of Clinical Medicine, Southern Medical University, Guangzhou 510515, Guangdong Province, China

Hong-Wei Han, Ning Shi, Yi-Ping Zou, Yuan-Peng Zhang, Ye Lin, Zi Yin, Zhi-Xiang Jian, Hao-Sheng Jin, Department of General Surgery, Guangdong Provincial People's Hospital, Guangdong Academy of Medical Sciences, Guangzhou 510080, Guangdong Province, China

Corresponding author: Hao-Sheng Jin, MD, Surgeon, Department of General Surgery, Guangdong Provincial People's Hospital, Guangdong Academy of Medical Sciences, No. 106 Zhongshan Er Road, Guangzhou 510080, Guangdong Province, China. kinghaos@126.com

Abstract

BACKGROUND

Liver cancer is a malignant tumor with a high incidence. At present, the most effective treatment is laparoscopic hepatectomy (LH). Indocyanine green fluorescence imaging (ICG-FI) has become an important tool in LH, and the most common fluorescent types of tumors are total fluorescence, partial fluorescence, and rim fluorescence.

CASE SUMMARY

We presented four cases of LH guided by ICG-FI in which we also observed the fourth special fluorescent type. When the tumor or intrahepatic stone compresses the adjacent bile duct to cause local cholestasis, the liver segment or subsegment with obstructed bile drainage will show strong fluorescence. Complete removal of the lesion together with the fluorescent liver parenchyma may help reduce the risk of tumor or stone recurrence.

CONCLUSION

This type of partial fluorescence can indicate local biliary compression, and the resection method is related to bile drainage, which may be called functional anatomical hepatectomy and ensures radical resection of the lesion.

Key Words: Indocyanine green; Localized cholestasis; Laparoscopic hepatectomy; Unique fluorescent phenomenon; Functional anatomical hepatectomy; Case report

©The Author(s) 2021. Published by Baishideng Publishing Group Inc. All rights reserved.

Conflict-of-interest statement: The authors declare that they have no conflicts of interest to disclose.

CARE Checklist (2016) statement: The authors have read the CARE Checklist (2016), and the manuscript was prepared and revised according to the CARE Checklist (2016).

Open-Access: This article is an open-access article that was selected by an in-house editor and fully peer-reviewed by external reviewers. It is distributed in accordance with the Creative Commons Attribution NonCommercial (CC BY-NC 4.0) license, which permits others to distribute, remix, adapt, build upon this work non-commercially, and license their derivative works on different terms, provided the original work is properly cited and the use is non-commercial. See: <http://creativecommons.org/licenses/by-nc/4.0/>

Manuscript source: Unsolicited manuscript

Specialty type: Gastroenterology and hepatology

Country/Territory of origin: China

Peer-review report's scientific quality classification

Grade A (Excellent): 0
Grade B (Very good): 0
Grade C (Good): 0
Grade D (Fair): 0
Grade E (Poor): 0

Received: November 4, 2020

Peer-review started: November 4, 2020

First decision: November 25, 2020

Revised: December 9, 2020

Accepted: January 14, 2021

Article in press: January 14, 2021

Published online: March 27, 2021

P-Reviewer: Kinami S

S-Editor: Gao CC

L-Editor: Wang TQ

P-Editor: Li JH



Core Tip: During laparoscopic hepatectomy guided by indocyanine green fluorescence imaging, tumor fluorescence usually manifests as total fluorescence, partial fluorescence, or rim fluorescence. However, surgeons occasionally encounter liver segment or subsegment fluorescence due to the tumor compressing the bile duct and local cholestasis. Despite malignant infiltration, stone compression and tumor thrombi in the bile duct can also cause this rare phenomenon. Complete removal of the lesions together with the fluorescent liver segment may help reduce the risk of tumor relapse, which can be called functional anatomical hepatectomy.

Citation: Han HW, Shi N, Zou YP, Zhang YP, Lin Y, Yin Z, Jian ZX, Jin HS. Functional anatomical hepatectomy guided by indocyanine green fluorescence imaging in patients with localized cholestasis: Report of four cases. *World J Gastrointest Surg* 2021; 13(3): 323-329

URL: <https://www.wjgnet.com/1948-9366/full/v13/i3/323.htm>

DOI: <https://dx.doi.org/10.4240/wjgs.v13.i3.323>

INTRODUCTION

With the development of near-infrared imaging technology in recent years, indocyanine green fluorescence imaging (ICG-FI) systems have become an important auxiliary tool in laparoscopic hepatobiliary surgery, which can help guide surgery in real time^[1]. It is most commonly used in tumor location, showing total fluorescence, partial fluorescence, or rim fluorescence, according to the malignant tumor^[2]. In our clinical practice, we observed another unusual and practical fluorescent phenomenon. When the liver tumor invades or compresses adjacent bile ducts, bile excretion in the corresponding liver segment becomes obstructed, and ICG remains in the cholestatic area, which contributes to the visualization of the cholestatic liver parenchyma during surgery. We can completely remove the tumor together with the affected bile drainage area, which may help reduce the risk of tumor relapse^[3]. Here, we report four rare cases of fluorescence with localized cholestasis, summarize and analyze the staining characteristics and significance of the fluorescent phenomenon, and propose functional anatomical hepatectomy. In these four cases, ICG was injected intravenously at a dose of 5 mg the day before surgery, and ICG-FI was obtained using the PINPOINT imaging system (Novadaq Technologies Inc., Ontario, Canada).

CASE PRESENTATION

Chief complaints

Case 1: The patient was a 60-year-old man with a liver mass detected during a routine checkup.

Case 2: The patient was a 73-year-old man diagnosed with colon cancer with liver metastases in September 2019.

Case 3: The patient was an 83-year-old man with a liver mass detected during a routine checkup.

Case 4: The patient was a 59-year-old woman who complained of frequent right upper quadrant abdominal pain for approximately 1 wk.

History of past illness

Cases 1, 3 and 4: Unremarkable.

Case 2: The patient was diagnosed with colon cancer with multiple liver metastases (3 masses located at segments II, V, and VIII) in September 2019. He underwent laparoscopic radical resection of left colon cancer. After surgery, he received adjuvantXELOX chemotherapy five times.

Imaging examinations

Case 1: The patient underwent magnetic resonance imaging (MRI) of the upper

abdomen, which revealed a tumor approximately 35 mm in diameter located in liver segment V/VIII (Figure 1A and B). Preoperative 3-dimensional reconstruction revealed that the tumor invaded the right anterior branch of the portal vein (Figure 1C and D). With a presumptive diagnosis of hepatocellular carcinoma, he underwent laparoscopic hepatectomy (LH). We observed partial fluorescence of segment V during the operation (Figure 1E), and the intraoperative ultrasound examination indicated that the right anterior branch of the portal vein was compressed by the tumor (Figure 1F). From the cut surface of the postoperative specimen shown in Figure 1G and H, we confirmed that the Glissonian pedicle was invaded by the tumor, which caused fluorescent staining of segment V.

Case 2: Abdominal contrast-enhanced computed tomography (CT) in February 2020 showed that all three liver metastases were smaller after chemotherapy, and he was admitted to the hospital for partial hepatectomy. During the surgery, the tumors and their surrounding fluorescent rings were clearly observed only in segments V and VIII (Figure 2A and B). In the left lateral lobe of the liver, a large area showed strong fluorescence (Figure 2C and D), which was caused by the segment II tumor invading and oppressing the drainage of the bile duct of the corresponding liver segment. For this reason, we excised the tumors in segments V and VIII and then conducted left lateral lobe resection to remove the liver parenchyma with complete bile drainage obstruction.

Case 3: The patient underwent abdominal MRI examination and was diagnosed with a hepatocellular carcinoma approximately 20 mm in diameter located at segment VI (Figure 3A and B). Intraoperative ultrasound examination of segment VI showed a tumor 2 cm × 3 cm in size. Through fluorescence laparoscopy, a fluorescent area of approximately 5 cm × 6 cm could be observed in part of segment VI, which was much larger than the tumor itself (Figure 3C). Under the guidance of intraoperative ultrasound, we dissected and clipped the segment VI Glissonian pedicle. A few minutes later, an ischemic line appeared on the surface of the liver, almost coinciding with the fluorescence boundary (Figure 3D), which again suggested that the fluorescent staining part was due to tumor compression of the segment VI Glissonian pedicle. According to the fluorescence boundary and ischemic line, we completely removed the tumor and the liver segment with bile excretion obstruction caused by tumor compression. From the postoperative specimen shown in Figure 3E and F, we could see the stained segment and the Glissonian pedicle oppressed by the tumor.

Case 4: The CT scan of the abdomen indicated multiple stones in the bile duct of the right lobe of the liver (Figure 4A). During the surgery, we observed partial fluorescence ranging from approximately 5 cm × 4 cm in liver segments VI and VII (Figure 4B), with regional atrophy of the liver parenchyma, so we completely resected the atrophic liver parenchyma according to the fluorescence boundary and removed the stones.

FINAL DIAGNOSIS

Similar to the preoperative diagnoses, patients 1 and 3 were diagnosed with hepatocellular carcinoma, and patient 2 was diagnosed with liver metastasis of colon cancer. For patient 4, who was diagnosed with hepatolithiasis before surgery, postoperative pathological examination suggested intrahepatic cholangiocarcinoma, bold tubular type, and microscopic images are shown in Figure 4C and D. Microscopically complete resection (R0) was achieved in all patients.

TREATMENT

All four patients underwent laparoscopic partial hepatectomy guided by ICG-FI as described above.

OUTCOME AND FOLLOW-UP

The four patients are well at present, and no tumor recurrence occurred during the follow-up period of 12.5 mo (7-24 mo).

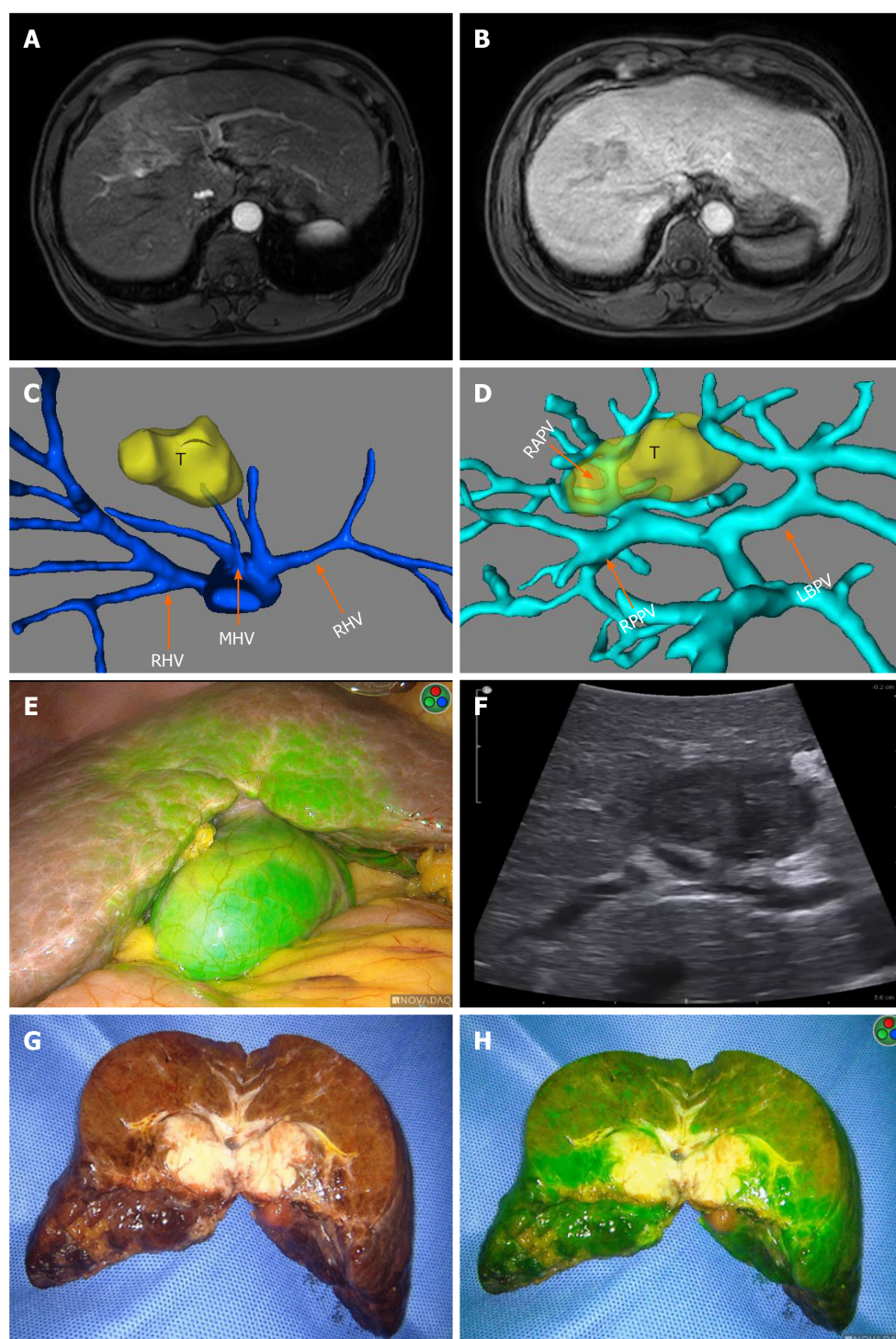


Figure 1 Imaging examinations of Case 1. A and B: Preoperative magnetic resonance imaging showed a tumor approximately 35 mm in diameter located at segment V/VIII; C and D: Preoperative 3-dimensional reconstruction of the hepatic vein and portal vein revealed the tumor located at segment V/VIII, invading the right anterior branch of the portal vein; E: Partial fluorescence of segment V; F: Intraoperative ultrasound examination showed that the vein was compressed by the tumor; G and H: Postoperative specimen confirmed that the Glissonian pedicle was invaded by the tumor. T: Tumor; LHV: Left hepatic vein; MHV: Middle hepatic vein; RHV: Right hepatic vein; LBPV: Left branch of portal vein; RPPV: Right posterior branch of portal vein; RAPV: Right anterior branch of portal vein.

DISCUSSION

Hepatobiliary diseases are usually associated with inflammation or tumor infiltration of adjacent tissues, so patients whose local anatomical structures are difficult to evaluate are often encountered, which makes it difficult to identify the surgical boundary of the liver parenchyma^[4]. ICG-FI technology can play a more helpful role in real-time navigation with this kind of patient. When the lesion infiltrates or compresses the adjacent bile duct, bile excretion in the corresponding area is blocked, causing ICG to be retained in the cholestatic area of the liver. Thus, the liver

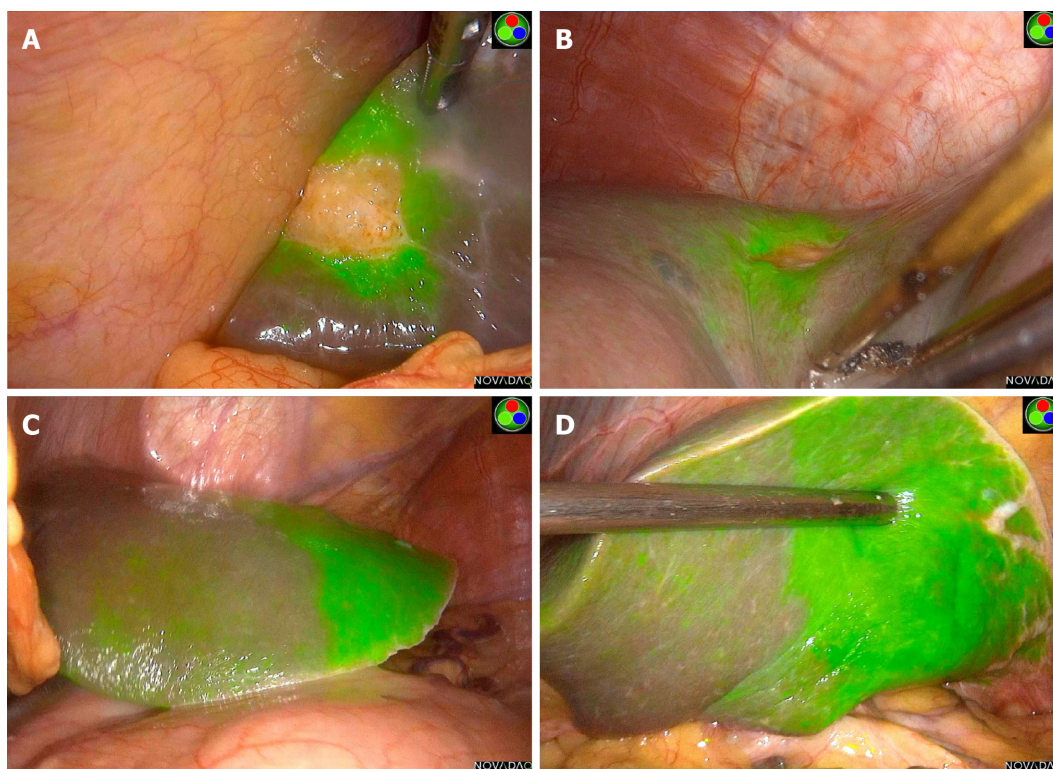


Figure 2 Imaging examinations of Case 2. A: The tumor and fluorescent ring in segment V; B: The tumor and fluorescent ring in segment VIII; C and D: The large area of strong fluorescence of the left lateral lobe of the liver.

parenchyma of the cholestatic area can be visualized during the operation, which can help ensure complete removal of the lesion and the affected bile drainage area.

In our medical center, more than 200 patients diagnosed with liver tumors have undergone LH guided by ICG-FI, and only four (approximately 2%) of them manifested this unique fluorescence phenomenon. In these four cases, the ICG-FI system delineated segments or subsegments of the liver with bile drainage obstruction by visualizing the cholestatic area with ICG fluorescence. It could clearly show the cholestatic area on the surface of the liver caused by tumor invasion or stone compression of the local bile duct, which could help determine the range of surgical resection. Although some patients may only manifest mild fluorescence on the liver surface, it provides sufficient information for surgeons to estimate the extent of biliary obstruction to remove the area affected by the tumor or stone as completely as possible with minimal loss of liver parenchyma.

CONCLUSION

ICG-FI is a practical and promising technique with great advantages in tumor staining. It can also clearly show cholestatic liver segments or subsegments caused by malignant infiltration, tumor compression, stone obstruction, local inflammation, or tumor thrombi in the bile duct, and it can provide real-time navigation for functional anatomical hepatectomy, which may help reduce the risk of tumor recurrence.

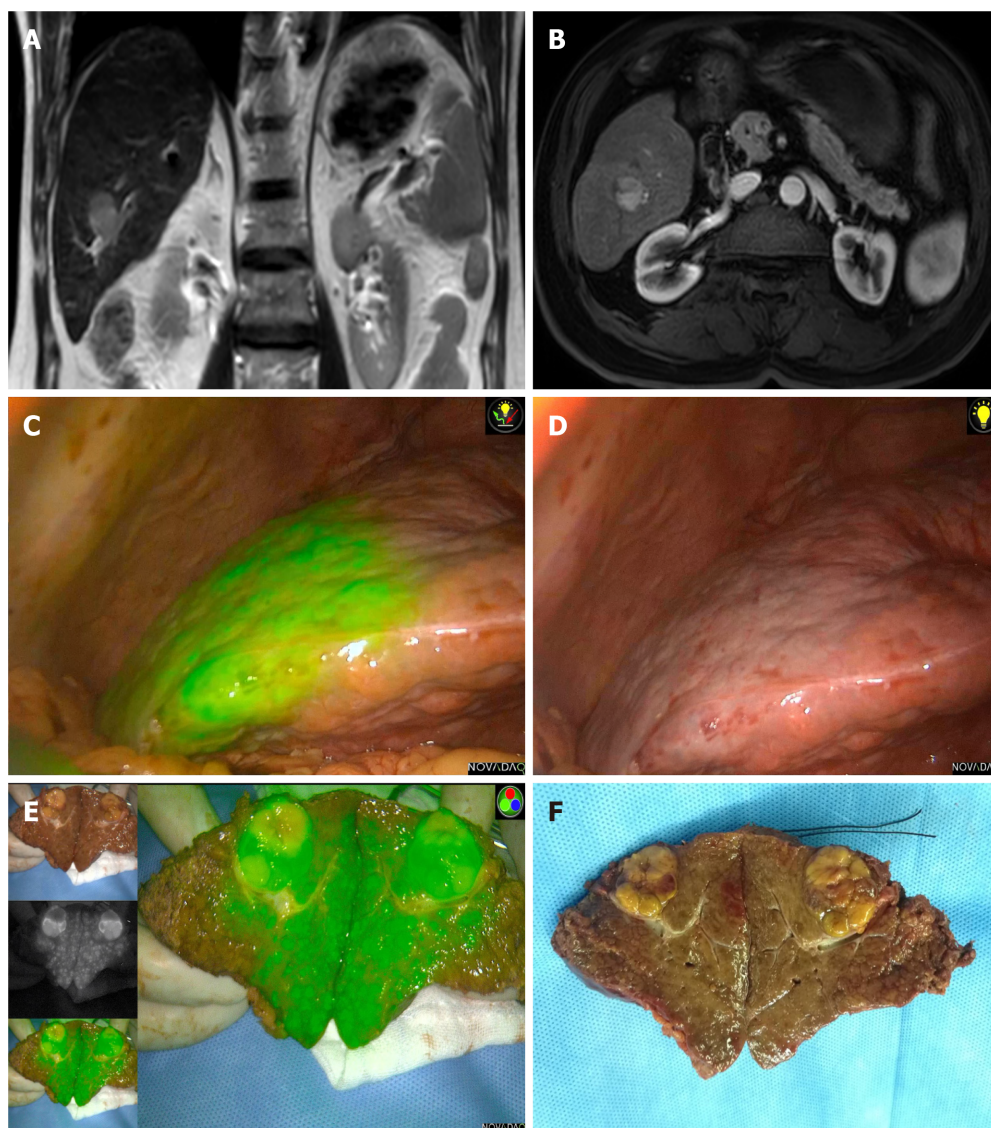


Figure 3 Imaging examinations of Case 3. A and B: Preoperative magnetic resonance imaging examination indicated a hepatocellular carcinoma approximately 20 mm in diameter located at segment VI; C: Fluorescent staining of segment VI; D: The ischemic line on the liver surface after clipping the segment VI pedicle; E and F: Postoperative specimen confirmed the Glissonian pedicle oppressed by the tumor and the stained segment.

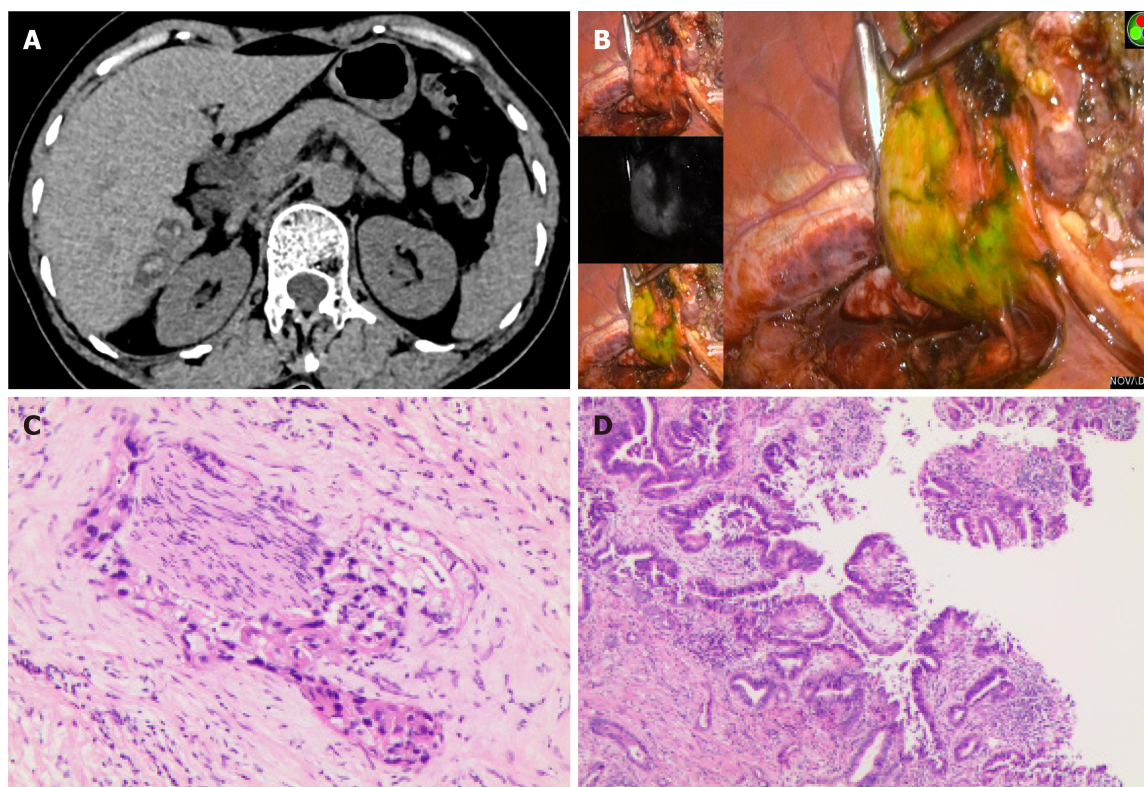


Figure 4 Imaging examinations of Case 4. A: Computed tomography scan indicated multiple intrahepatic stones; B: Partial fluorescence accumulation in segment VI/VII, approximately 5 cm × 4 cm; C and D: Postoperative pathological examination suggested intrahepatic cholangiocarcinoma.

REFERENCES

- 1 **Baiocchi GL**, Diana M, Boni L. Indocyanine green-based fluorescence imaging in visceral and hepatobiliary and pancreatic surgery: State of the art and future directions. *World J Gastroenterol* 2018; **24**: 2921-2930 [PMID: 30038461 DOI: 10.3748/wjg.v24.i27.2921]
- 2 **Ishizawa T**, Fukushima N, Shibahara J, Masuda K, Tamura S, Aoki T, Hasegawa K, Beck Y, Fukayama M, Kokudo N. Real-time identification of liver cancers by using indocyanine green fluorescent imaging. *Cancer* 2009; **115**: 2491-2504 [PMID: 19326450 DOI: 10.1002/cncr.24291]
- 3 **Harada N**, Ishizawa T, Muraoka A, Ijichi M, Kusaka K, Shibasaki M, Yamamoto K, Hasegawa K, Bandai Y, Kokudo N. Fluorescence navigation hepatectomy by visualization of localized cholestasis from bile duct tumor infiltration. *J Am Coll Surg* 2010; **210**: e2-e6 [PMID: 20510795 DOI: 10.1016/j.jamcollsurg.2010.02.052]
- 4 **Mitsuhashi N**, Kimura F, Shimizu H, Imamaki M, Yoshidome H, Ohtsuka M, Kato A, Yoshitomi H, Nozawa S, Furukawa K, Takeuchi D, Takayashiki T, Suda K, Igarashi T, Miyazaki M. Usefulness of intraoperative fluorescence imaging to evaluate local anatomy in hepatobiliary surgery. *J Hepatobiliary Pancreat Surg* 2008; **15**: 508-514 [PMID: 18836805 DOI: 10.1007/s00534-007-1307-5]



Published by **Baishideng Publishing Group Inc**
7041 Koll Center Parkway, Suite 160, Pleasanton, CA 94566, USA

Telephone: +1-925-3991568

E-mail: bpgoffice@wjgnet.com

Help Desk: <https://www.f6publishing.com/helpdesk>

<https://www.wjgnet.com>

