

World Journal of *Gastrointestinal Surgery*

World J Gastrointest Surg 2022 January 27; 14(1): 1-77



Contents

Monthly Volume 14 Number 1 January 27, 2022

MINIREVIEWS

- 1 Current status of liver transplantation for cholangiocarcinoma
Twohig P, Peeraphatdit TB, Mukherjee S
- 12 Gastric per-oral endoscopic myotomy: Indications, technique, results and comparison with surgical approach
Verga MC, Mazza S, Azzolini F, Cereatti F, Conti CB, Drago A, Soro S, Elvo B, Grassia R

ORIGINAL ARTICLE

Retrospective Cohort Study

- 24 Survival after curative pancreaticoduodenectomy for ampullary adenocarcinoma in a South American population: A retrospective cohort study
Fernandez-Placencia RM, Montenegro P, Guerrero M, Serrano M, Ortega E, Bravo M, Huanca L, Bertani S, Trejo JM, Webb P, Malca-Vasquez J, Taxa L, Lachos-Davila A, Celis-Zapata J, Luque-Vasquez C, Payet E, Ruiz E, Berrospi F
- 36 Application value of mixed reality in hepatectomy for hepatocellular carcinoma
Zhu LY, Hou JC, Yang L, Liu ZR, Tong W, Bai Y, Zhang YM

Retrospective Study

- 46 Association of anastomotic leakage with long-term oncologic outcomes of patients with esophagogastric junction cancer
Takeuchi M, Kawakubo H, Matsuda S, Mayanagi S, Irino T, Okui J, Fukuda K, Nakamura R, Wada N, Takeuchi H, Kitagawa Y
- 56 Laparoscopic Kasai portoenterostomy can be a standard surgical procedure for treatment of biliary atresia
Shirotta C, Hinoki A, Tainaka T, Sumida W, Kinoshita F, Yokota K, Makita S, Amano H, Nakagawa Y, Uchida H
- 64 Routine laboratory parameters in patients with necrotizing pancreatitis by the time of operative pancreatic debridement: Food for thought
Susak YM, Opalchuk K, Tkachenko O, Rudyk M, Skivka L

ABOUT COVER

Editorial Board Member of *World Journal of Gastrointestinal Surgery*, Ajaz Ahmad Rather, FACS, FICS, FRCS (Ed), MBBS, MS, Professor, Department of Surgery, SKIMS Medical College, Srinagar 190012, Jammu and Kashmir, India. drajazrather@gmail.com

AIMS AND SCOPE

The primary aim of *World Journal of Gastrointestinal Surgery* (WJGS, *World J Gastrointest Surg*) is to provide scholars and readers from various fields of gastrointestinal surgery with a platform to publish high-quality basic and clinical research articles and communicate their research findings online.

WJGS mainly publishes articles reporting research results and findings obtained in the field of gastrointestinal surgery and covering a wide range of topics including biliary tract surgical procedures, biliopancreatic diversion, colectomy, esophagectomy, esophagostomy, pancreas transplantation, and pancreatectomy, etc.

INDEXING/ABSTRACTING

The WJGS is now abstracted and indexed in Science Citation Index Expanded (SCIE, also known as SciSearch®), Current Contents/Clinical Medicine, Journal Citation Reports/Science Edition, PubMed, and PubMed Central. The 2021 edition of Journal Citation Reports® cites the 2020 impact factor (IF) for WJGS as 2.582; IF without journal self cites: 2.564; 5-year IF: 3.378; Journal Citation Indicator: 0.53; Ranking: 97 among 212 journals in surgery; Quartile category: Q2; Ranking: 73 among 92 journals in gastroenterology and hepatology; and Quartile category: Q4.

RESPONSIBLE EDITORS FOR THIS ISSUE

Production Editor: Rui-Rui Wu, Production Department Director: Xiang Li, Editorial Office Director: Ya-Juan Ma.

NAME OF JOURNAL

World Journal of Gastrointestinal Surgery

ISSN

ISSN 1948-9366 (online)

LAUNCH DATE

November 30, 2009

FREQUENCY

Monthly

EDITORS-IN-CHIEF

Peter Schemmer

EDITORIAL BOARD MEMBERS

<https://www.wjgnet.com/1948-9366/editorialboard.htm>

PUBLICATION DATE

January 27, 2022

COPYRIGHT

© 2022 Baishideng Publishing Group Inc

INSTRUCTIONS TO AUTHORS

<https://www.wjgnet.com/bpg/gerinfo/204>

GUIDELINES FOR ETHICS DOCUMENTS

<https://www.wjgnet.com/bpg/gerinfo/287>

GUIDELINES FOR NON-NATIVE SPEAKERS OF ENGLISH

<https://www.wjgnet.com/bpg/gerinfo/240>

PUBLICATION ETHICS

<https://www.wjgnet.com/bpg/gerinfo/288>

PUBLICATION MISCONDUCT

<https://www.wjgnet.com/bpg/gerinfo/208>

ARTICLE PROCESSING CHARGE

<https://www.wjgnet.com/bpg/gerinfo/242>

STEPS FOR SUBMITTING MANUSCRIPTS

<https://www.wjgnet.com/bpg/gerinfo/239>

ONLINE SUBMISSION

<https://www.f6publishing.com>

Retrospective Study

Routine laboratory parameters in patients with necrotizing pancreatitis by the time of operative pancreatic debridement: Food for thought

Yaroslav M Susak, Kristina Opalchuk, Olexandr Tkachenko, Mariia Rudyk, Larysa Skivka

ORCID number: Yaroslav M Susak 0000-0002-5102-485X; Kristina Opalchuk 0000-0002-9632-4709; Olexandr Tkachenko 0000-0001-6211-7675; Mariia Rudyk 0000-0003-1252-885X; Larysa Skivka 0000-0002-2171-1085.

Author contributions: Susak YM was chief surgeon and performed the surgeries on patients included in this study; Opalchuk K was a surgeon and assisted with surgeries on patients who are included in this study and was involved with data collection; Tkachenko O was a supervisor and participated in design of the study; Rudyk M assisted with statistical analysis of the data; Skivka L drafted the manuscript, performed statistical analysis, and participated in design of the study; All authors have read and approved the final manuscript.

Institutional review board

statement: The project has been reviewed and approved by the Committee on Human Rights Related to Research Involving Human Subjects of Kyiv City Clinical Emergency Hospital (Kyiv, Ukraine), based on the Declaration of Helsinki.

Informed consent statement: All

Yaroslav M Susak, Department of Surgery with the Course of Emergency and Vascular Surgery, O.O. Bogomolet's National Medical University, Kyiv 01601, Ukraine

Kristina Opalchuk, Department of Surgery, Anesthesiology and Intensive Care Postgraduate Education, O.O. Bogomolet's National Medical University, Kyiv 01601, Ukraine

Olexandr Tkachenko, Department of Surgery N2, Kyiv City Clinical Emergency Hospital, Kyiv City Clinical Emergency Hospital, Kyiv 02000, Ukraine

Mariia Rudyk, Larysa Skivka, Department of Microbiology and Immunology, Educational and Scientific Center "Institute of Biology and Medicine", Taras Shevchenko National University of Kyiv, Kyiv 01033, Ukraine

Corresponding author: Mariia Rudyk, PhD, Associate Professor, Department of Microbiology and Immunology, Educational and Scientific Center "Institute of Biology and Medicine", Taras Shevchenko National University of Kyiv, 2 Hlushkova Avenue, Kyiv 03127, Ukraine. rosiente@gmail.com

Abstract

BACKGROUND

Timing of invasive intervention such as operative pancreatic debridement (OPD) in patients with acute necrotizing pancreatitis (ANP) is linked to the degree of encapsulation in necrotic collections and controlled inflammation. Additional markers of these processes might assist decision-making on the timing of surgical intervention. In our opinion, it is logical to search for such markers among routine laboratory parameters traditionally used in ANP patients, considering simplicity and cost-efficacy of routine laboratory methodologies.

AIM

To evaluate laboratory variables in ANP patients in the preoperative period for the purpose of their use in the timing of surgery.

METHODS

A retrospective analysis of routine laboratory parameters in 53 ANP patients undergoing OPD between 2017 and 2020 was performed. Dynamic changes of routine hematological and biochemical indices were examined in the preoperative

subjects gave their written informed consent prior to study inclusion.

Conflict-of-interest statement: The authors declare that they have no conflicts of interest.

Data sharing statement: There is no additional data available.

STROBE statement: The authors have read the STROBE Statement – checklist of items, and the manuscript was prepared and revised according to the STROBE Statement – checklist of items.

Country/Territory of origin: Ukraine

Specialty type: Surgery

Provenance and peer review: Invited article; Externally peer reviewed.

Peer-review model: Single blind

Peer-review report's scientific quality classification

Grade A (Excellent): 0
Grade B (Very good): 0
Grade C (Good): C, C
Grade D (Fair): 0
Grade E (Poor): 0

Open-Access: This article is an open-access article that was selected by an in-house editor and fully peer-reviewed by external reviewers. It is distributed in accordance with the Creative Commons Attribution NonCommercial (CC BY-NC 4.0) license, which permits others to distribute, remix, adapt, build upon this work non-commercially, and license their derivative works on different terms, provided the original work is properly cited and the use is non-commercial. See: <http://creativecommons.org/licenses/by-nc/4.0/>

Received: May 18, 2021

Peer-review started: May 18, 2021

First decision: June 15, 2021

Revised: June 29, 2021

Accepted: December 22, 2021

Article in press: December 22, 2021

Published online: January 27, 2022

P-Reviewer: Inal V, Mannan F

period. Patients were divided into survivors and non-survivors. Survivors were divided into subgroups with short and long post-surgery length of stay (LOS) in hospital. Correlation analysis was used to evaluate association of laboratory variables with LOS. Logistic regression was used to assess risk factors for patient mortality.

RESULTS

Seven patients (15%) with severe acute pancreatitis (SAP) and 46 patients (85%) with moderately SAP (MSAP) were included in the study. Median age of participants was 43.2 years; 33 (62.3%) were male. Pancreatitis etiology included biliary (15%), alcohol (80%), and idiopathic/other (5%). Median time from diagnosis to OPD was ≥ 4 wk. Median postoperative LOS was at the average of 53 d. Mortality was 19%. Progressive increase of platelet count in preoperative period was associated with shortened LOS. Increased aspartate aminotransferase and direct bilirubin (DB) levels the day before the OPD along with weak progressive decrease of DB in preoperative period were reliable predictors for ANP patient mortality.

CONCLUSION

Multifactorial analysis of dynamic changes of routine laboratory variables can be useful for a person-tailored timing of surgical intervention in ANP patients.

Key Words: Acute necrotizing pancreatitis; Operative pancreatic debridement timing; Dynamic changes of laboratory variables; Preoperative period; Necrotic tissue encapsulation; Hospital length of stay

©The Author(s) 2022. Published by Baishideng Publishing Group Inc. All rights reserved.

Core Tip: This is a retrospective study to evaluate laboratory variables in patients with acute necrotizing pancreatitis in the preoperative period for their use in the timing of operative pancreatic debridement (OPD). We demonstrated that progressive increase in platelet counts correlate with shortened length of hospital stay. It can indicate granulation tissue formation, and can be considered as an additional marker for OPD timing. Persistent hepatic malfunction, which is indicated by a weak progressive decrease of the direct bilirubin and increased aspartate aminotransferase level can signify a high risk of post-operative mortality. Multifactorial analysis of dynamic changes of laboratory variables can be useful for person-tailored timing of OPD.

Citation: Susak YM, Opalchuk K, Tkachenko O, Rudyk M, Skivka L. Routine laboratory parameters in patients with necrotizing pancreatitis by the time of operative pancreatic debridement: Food for thought. *World J Gastrointest Surg* 2022; 14(1): 64-77

URL: <https://www.wjgnet.com/1948-9366/full/v14/i1/64.htm>

DOI: <https://dx.doi.org/10.4240/wjgs.v14.i1.64>

INTRODUCTION

Acute pancreatitis (AP) is the most prevalent and fairly unpredictable and potentially lethal gastrointestinal disease with an annual incidence ranging from 4.0 to 45 per 100000 persons[1,2]. About 20% of AP patients develop severe disease, and around 20% of them develop necrosis of the pancreas and peripancreatic tissues resulting in acute necrotizing pancreatitis (ANP). ANP development is associated with prolonged illness, organ failure and a high mortality rate, which can reach 30% in patients with infected pancreatic necrosis[3,4]. ANP patients usually need intensive care and frequent numerous procedures in the course of the treatment. Operative pancreatic debridement (OPD) is considered a gold standard treatment for ANP patients requiring surgical intervention. For a long time, this procedure was accompanied by significant morbidity and high mortality rates. Nowadays, refined operative techniques in combination with surgeon experience have allowed us to decrease perioperative mortality rates. In the past 10 years, minimally invasive techniques have

S-Editor: Chang KL**L-Editor:** Filipodia**P-Editor:** Chang KL

been applied to the treatment of NP patients. Nevertheless, many ANP patients require a combination of minimally invasive techniques and OPD in order to achieve complete debridement. Moreover, OPD remains an important treatment approach for ANP patients who are refractory to minimally invasive treatment[5-7]. Considering the complicated ANP pathophysiology and highly variable clinical course, a person-tailored approach to intervention methods including OPD makes sense according to the specific conditions of patients. One of the key points in these patient-tailored approaches is the timing of surgical intervention, in order to gain the most beneficial result[8,9].

Timing on invasive intervention in ANP patients is often linked to the degree of encapsulation in necrotic collections. The degree of necrotic collections encapsulation is important because walling-off allows the immune system demarcation between viable and necrotic tissues, thereby facilitating effective debridement[10-12]. It is commonly admitted that the timing of encapsulation takes about 4 wk (after symptom onset) and this timescale is included in the Revised Atlanta Classification[13]. However, the pathophysiology and time course of necrotic collection walling-off are not fully understood and remain a topic of debate. According to clinical observations of van Grinsven *et al*[14], and opposed to common opinion, largely or fully encapsulated necrotic collections can be observed in ANP patients at every phase of the disease. Assessment of the degree of encapsulation of necrotic collections is influenced by imaging and clinical features. Additional markers of this process might assist decision-making on the timing of surgical intervention. The search for these markers should be based on current knowledge of the biology of necrotic tissue encapsulation. In our opinion, it is logical to search for such markers among routine laboratory parameters traditionally used in ANP patients, considering simplicity and cost-efficacy of routine laboratory methodologies. This study was aimed to evaluate distinctive features of routine biochemical and hematological parameters in patients with ANP by the time of OPD for the purpose of their use as additional markers for the timing of surgical intervention.

MATERIALS AND METHODS

Patients and treatments

We conducted a retrospective analysis of a prospectively collected O.O. Bogomolets National Medical University (Kyiv, Ukraine) (Department of Surgery with a course of emergency and vascular surgery) database of 53 ANP patients who underwent OPD between 2017 and 2020 in Kyiv City Clinical Emergency Hospital, Ukraine. Approval was obtained from the Ethics Committee of Kyiv City Clinical Emergency Hospital (Protocol #25-15-60, from 20 November 2017), and consent was obtained from all subjects before the commencement of the study.

AP was diagnosed in all patients with clinical signs of acute abdominal pain and a three or more times increased level of serum amylase. AP severity was established according to the revised Atlanta classification and Marshall scoring system[13]. Pancreatic and peripancreatic necrosis was detected in the patients using ultrasound imaging and contrast-enhanced computed tomography.

All patients were treated according to the local treatment protocol that was clinically approved for AP patients from year 2014. After admission, patients were managed on the intensive care unit (ICU) using the “four catheters” rule[15]: Catheter for epidural anesthesia, installment of the feeding intestinal probe further than the Treitz ligament level, the central venous catheterization and the programmed laparocentesis. Median length of ICU stay was 3.2 d.

All patients were initially treated with a minimally invasive technique: laparocentesis, percutaneous drainage of the retroperitoneal space, pleural and abdominal cavities. Primarily, percutaneous drainage was used in all patients under ultrasound control of infected necrotic areas. Abdominal drainage was conducted on each patient two or more times.

Indications for necrosectomy were persisting organ failure and documented infected necrosis. Organ failure was defined as follows; Pulmonary insufficiency: $\text{PaO}_2 \leq 60$ mmHg in spite of receiving 4 L of oxygen per minute *via* a nasal tube or need for mechanical ventilation. Cardiocirculatory insufficiency: Systolic blood pressure ≤ 90 mmHg or necessity for catecholamine support. Renal failure: a serum creatinine level ≥ 150 $\mu\text{mol/L}$ and/or necessity for hemofiltration/hemodialysis. Metabolic disorders: A serum calcium level ≤ 1.87 mmol/L or a platelet (PLT) count $\leq 100 \times 10^9/\text{L}$. Multiple organ failure (MOF) was established as failure of 2 or more organ systems. Infected

pancreatic/peripancreatic necrosis was revealed according to the imaging (the presence of extraluminal gas in the pancreatic and/or peripancreatic tissues) and/or bacteriological (positive bacterial culture of aspiration and drainage content of pancreatic and/or peripancreatic tissues) findings. During laparotomy, blunt debridement of necrotic tissue and tissues of the retroperitoneal space was performed. Drainage PVC tubes were inserted through separate incisions (3-4 cm) on the lateral areas of the abdomen with their tips placed to the necrotic cavities under the colon. The abdomen was closed afterwards, and local continuous lavage was started.

Endpoints and laboratory variables

Outcome variables were: (1) Total hospital length of stay (LOS); (2) Post-OPD LOS in survivors; (3) LOS between OPD and death (LOS_{OPD-D}) in non-survivors; and (4) Hospital mortality.

For each enrolled patient, routine laboratory variables were measured for time period from the time of admission until surgical intervention (OPD). EDTA-anticoagulated venous blood samples for all laboratory tests were drawn between 7 am and 8 am in the morning, and laboratory indices were calculated within 1.5-2.5 h.

Routine biochemical parameters [serum level of total bilirubin (TB) direct bilirubin (DB), aspartate aminotransferase (AST), alanine aminotransferase (ALT), α -amylase (AML), as well as gamma-glutamyl transpeptidase (GGT), glucose, creatinine, blood urea nitrogen] were measured using automatic biochemical analyzer Olympus AU-800 (Olympus, Tokyo, Japan). Routine hematological parameters [hemoglobin (Hgb), hematocrit (HCT), total red blood cell count (RBC), total white blood cell count (WBC), PLT] were determined using automatic hematological analyzer Mindray BC-2800 (Mindray, Shenzhen, China).

The dynamic changes of all laboratory variables were calculated as follows: A - Day 1 (on admission); B - Day 3-7; Δ (B-A); C - Day 12-16; Δ (C-B); D - Day 21-24; Δ (D-C); E - Day before the OPD; Δ (E-D); Δ (E-C); Δ (E-D); Δ (E-A); Δ (A-E); A to E ratio (A/E).

Hematological and biochemical reference values in our hospital are as follows: Hgb, 130-160 g/L (male) and 120-140 g/L (female); HCT, 40%-48% (male) and 36%-46% (female); RBC, $4.5-5.9 \times 10^{12}/L$ (male) and $4.1-5.1 \times 10^{12}/L$ (female); WBC, $3.9-10 \times 10^9/L$; PLT, $180-320 \times 10^9/L$; TB, 2-21 $\mu\text{mol}/L$; DB, 0-5 $\mu\text{mol}/L$; ALT, 0.1-0.68 $\mu\text{kat}/L$; AST, 0.1-0.45 $\mu\text{kat}/L$; AML, 12-32 U/L; GGT, 9-48 U/L; glucose, 3.3-6.5 mmol/L; creatinine 71-106 $\mu\text{mol}/L$; blood urea nitrogen, 2.5-8.3 mmol/L. Permissible error of the assay was $\leq 5\%$ of the total coefficient of variation according to the manufacturer statement.

Statistical analysis

Normally distributed variables were compared using Student's *t*-test, non-normally distributed variables using Mann-Whitney *U*-test. Data are presented as means \pm SD.

Spearman correlation test was used to determine the statistical relationships between the preoperative values of measured laboratory variables and different LOS indices. A 2-tailed $P \leq 0.05$ was considered statistically significant in all analyses. The prognostic validities of measured laboratory variables values was analyzed using receiver operating characteristic (ROC) analysis.

To identify the variables associated with mortality, univariate and multivariate logistic regression analysis was conducted. Odds ratios (OR) are represented with their respective 95% confidence intervals (CI). The Hosmer-Lemeshow test was applied to verification the goodness-of-fit of the logistic regression. All tests were assessed by odds ratio OR and their 95%CI. Statistical analyses were performed by SPSS software (version 19.0; SPSS Inc., Chicago, IL, USA).

The statistical methods of this study were reviewed and approved by Vitaliy Gurianov, associate professor of Healthcare Management Department, Bogomolets National Medical University, Kyiv, Ukraine.

RESULTS

General characteristics of patients

General characteristics of study participants are summarized in Table 1. Fifty-three ANP patients were enrolled during this study: 7 patients (15%) with severe AP (SAP) and 46 patients (85%) with moderately severe AP (MSAP). Thirty-three (62.3 %) were male and 20 (37.7%) were female. Median age of the patients was 43.2 years. Pancreatitis etiology included: Alcohol, biliary, posttraumatic, and idiopathic. Single and MOF included cardiocirculatory insufficiency, renal failure, and pulmonary insuffi-

Table 1 General characteristics of study participants and preoperative manipulations

Characteristic	Value
Sex, age, severity scores	
Male, <i>n</i> (%)	33 (62.3)
Female, <i>n</i> (%)	20 (37.7)
Age, yr [range]	43 [23-68]
APACHE II score	8
Marshall score	4
Mortality, %	19
Etiology, <i>n</i> (%)	
Alcohol	42 (79)
Biliary	4 (7)
Posttraumatic	4 (7)
Idiopathic	3 (5)
Comorbidity, <i>n</i> (%)	
Multiple organ failure	5 (9)
Cardiovascular	11 (20)
Renal	4 (7)
Respiratory	10 (18)
Pneumonia	12 (22)
Necrosis infection	53 (100)
Extrapaneatic infection	53 (100)
Sepsis	8 (15)
Preoperative interventions	
Laparocentesis	53
Thoracocentesis	31
Percutaneous drain	147
Endoscopic	33

ciency. Other complications included an omental abscess ($n = 42$), erosive bleeding ($n = 7$), a pancreatic fistula ($n = 4$), an intestinal fistula ($n = 4$), and a post-necrotic cyst ($n = 7$). The mean total LOS was 85 d. Median timing of the OPD was 30 d [range, 20-86 d] from the onset of the disease. Median post-surgical LOS was at the average of 53 d. Mortality rate was 19%.

According to hospital mortality, 53 patients were divided into the survivor's group ($n = 43$), and non-survivor's group ($n = 10$). There were no significant differences with respect to age and gender between the two groups. It is necessary to note, that non-survivors were characterized by the increased sepsis rate [6 (60%) *vs* 4 (9%) in survivors] and MOF rate [3 (33.3%) *vs* 2 (4.7%) in survivor's].

According to post-OPD LOS 43 survivors were divided into two subgroups: Post-OPD LOS ≤ 50 d ($n = 12$), and post-OPD LOS ≥ 50 d ($n = 31$). There were no significant differences with respect to age and severity scores between the two subgroups. It is necessary to point, that females prevailed in subgroup with post-OPD LOS ≤ 50 d.

Comparison of laboratory variables between survivors with different post-surgical LOS

The dynamic changes of laboratory variables in the survivors with different post-OPD LOS are summarized in Table 2. Baseline values (Day 1) of many of laboratory variables were not significantly different between survivors with different post-OPD LOS. Compared with patients with post-OPD LOS ≤ 50 , patients with post-OPD LOS \geq

Table 2 The dynamic changes of laboratory variables in the survivors with different Length of stay in hospital

Laboratory variable	Post-OPD LOS ≤ 50 d, $n = 12$	post-OPD LOS ≥ 50 d, $n = 31$
Hgb (g/L)		
Day 1 (A)	111.4 \pm 12.1	176.3 \pm 31.2 ^b
Day 3-9 (B)	93.6 \pm 8.9	116.4 \pm 26.6
Δ (B-A)	-35.5 \pm 12.9	-46.4 \pm 7.5
Day before OPD (E)	89.4 \pm 7.8	83.6 \pm 7.2
Δ (E-A)	-22.0 \pm 11.4	-79.2 \pm 12.0 ^a
WBC ($\times 10^9/L$)		
Day 1 (A)	9.6 \pm 3.9	11.5 \pm 1.7
Day 3-9 (B)	16.5 \pm 9.8	13.1 \pm 4.6
Δ (B-A)	3.6 \pm 6.3	-0.6 \pm 6.6
Day before OPD (E)	10.1 \pm 2.5	13.8 \pm 4.7
Δ (E-A)	0.6 \pm 2.4	2.4 \pm 4.3
PLT ($\times 10^9/L$)		
Day 1 (A)	236.5 \pm 57.8	223.5 \pm 64.2
Day 3-9 (B)	453.5 \pm 58.3	224.0 \pm 44.5 ^b
Δ (B-A)	232.8 \pm 50.9	-7.5 \pm 57.8 ^a
Day before OPD (E)	648.0 \pm 74.7	360.2 \pm 104.8 ^a
Δ (E-A)	430.5 \pm 76.4	181.0 \pm 48.7 ^a
AST ($\mu\text{kat/L}$)		
Day 1 (A)	0.56 \pm 0.31	0.99 \pm 0.35
Day 3-9 (B)	0.44 \pm 0.06	0.72 \pm 0.13 ^a
Δ (B-A)	-0.18 \pm 0.27	-0.84 \pm 0.41
Day before OPD (E)	0.36 \pm 0.11	0.42 \pm 0.19
Δ (E-A)	-0.19 \pm 0.28	-1.0 \pm 1.0
ALT ($\mu\text{kat/L}$)		
Day 1 (A)	0.71 \pm 0.52	1.79 \pm 1.31
Day 3-9 (B)	0.46 \pm 0.18	1.02 \pm 0.52 ^a
Δ (B-A)	-0.34 \pm 0.43	-1.32 \pm 0.84
Day before OPD (E)	0.51 \pm 0.22	0.51 \pm 0.16
Δ (E-A)	-0.21 \pm 0.39	-1.28 \pm 1.24
DB ($\mu\text{mol/L}$)		
Day 1 (A)	15.73 \pm 19.79	14.95 \pm 11.53
Day 3-9 (B)	3.21 \pm 0.87	6.78 \pm 4.37
Δ (B-A)	-18.5 \pm 22.19	-10.02 \pm 10.81
Day before OPD (E)	1.72 \pm 1.01	2.55 \pm 0.74
Δ (E-A)	-14.02 \pm 19.79	-12.4 \pm 11.53
AML (U/L)		
Day 1 (A)	65.8 \pm 48.07	56.3 \pm 24.47
Day 3-9 (B)	26.62 \pm 8.11	38.94 \pm 27.03
Δ (B-A)	-32.34 \pm 43.11	-17.36 \pm 16.55
Day before OPD (E)	21.18 \pm 4.85	27.46 \pm 16.61

Δ (E-A)	-44.62 \pm 47.55	-28.84 \pm 41.51
----------------	--------------------	--------------------

^a $P \leq 0.05$ as compared to patients with post-OPD LOS ≤ 50 d. A: Day 1 (on admission); B: Day 3-7; C: Day 12-16; D: Day 21-24; E: Day before the operative pancreatic debridement. ALT: Alanine aminotransferase; AML: α -amylase; AST: Aspartate aminotransferase; DB: Direct bilirubin; Hgb: Hemoglobin; LOS: Length of stay in hospital; OPD: Operative pancreatic debridement; PLT: Total platelets count; WBC: Total white blood cell count.

50 had moderately higher Hgb (176.3 ± 31.2 vs 111.4 ± 12.1 , $P \leq 0.05$). Patients with post-OPD LOS ≥ 50 also tended to exhibit higher baseline ALT and AST (1.79 ± 1.31 vs 0.71 ± 0.52 and 0.99 ± 0.35 vs 0.56 ± 0.31 respectively). However, these values were characterized by significant individual variability. Significant differences were observed in PLT count in patients with different post-OPD LOS. PLT count increased progressively in the preoperative period in patients from both subgroups. However, in participants with post-OPD LOS ≥ 50 , it did not go beyond the reference range, while in patients with post-OPD LOS ≤ 50 it exceeded the reference values by at least two times the day before OPD. Slightly increased WBC count was observed in all survivors until the OPD with significant individual variability, which indicates persistent inflammation. Initially increased DB levels decreased progressively in preoperative period without statistically significant differences between subgroups. AML levels remained higher than reference values the day before OPD in all survivors. There were no significant differences with respect to other measured laboratory variables (data not shown).

Correlations between dynamic changes of laboratory variables and total and post-OPD LOS

There was a significant correlation between total LOS and Hgb level Δ (A-E) (Figure 1A), indicating that a significant decrease of Hgb concentration is associated with prolonged total and post-surgical LOS. A significant inverse correlation was observed between total LOS and WBC count Δ (A-E) (Figure 1B), suggesting that a progressive decrease of WBC count during the pre-operative period till reference values is associated with shortened post-OPD LOS. A significant inverse correlation was also registered between total LOS and PLT count Δ (E-A) (Figure 1C), indicating that a substantial increase of PLT count before the surgery accompanies shortened post-surgery recovery. Moderate correlation was revealed between total LOS and AML Δ (A-E) (Figure 1D). Considering that AML values were near reference range in all survivors the day before surgery, this correlation suggests that a highly increased AML value on admission is associated with the disease severity, and as a result with prolonged pre- and post-surgery LOS. High values of ALT Δ (A-E) significantly correlated with both total LOS and post-OPD LOS (Figure 1E and F). Considering that ALT values did not exceed the reference range in all survivors the day before the OPD, these correlations indicate that increased baseline ALT value (as a marker of ongoing liver disease process[16]) is associated with disease severity and prolonged recovery.

Univariate logistic regression analysis

We further performed univariate logistic regression analysis to find out potential risk factors associated with hospital mortality, as shown in Table 3. Four laboratory variables were associated with mortality, including AST, AML and DB serum levels the day before the surgery (E values), as well as E to A ratio for DB. Other measured laboratory parameters were unrelated to outcomes.

Predictive value of laboratory variables for hospital mortality in ANP patients

To investigate the predictive values of laboratory variables, ROC analysis was conducted (Table 4, Figure 2). The AUC of AML (E) (AUC: 0.729, 95%CI: 0.550-0.866, $P < 0.032$) was greater than the other biomarkers. The optimal cutoff value of AML (E) was ≤ 17.2 U/L, with 66.7% sensitivity, 84.0% specificity, 60.0% PPV and 87.5% NPV. In addition, a DB (E) value of > 4.2 $\mu\text{mol/L}$ allowed discrimination between ANP survivors and non-survivors, with a sensitivity of 44.4% and a specificity of 100.0% (AUC: 0.782, 95%CI: 0.608-0.905, PPV: 100.0%, NPV: 83.3%, $P < 0.001$). The AUC of ΔPCT7 was 0.834 (95%CI: 0.759-0.906, $P < 0.001$), with 80.5% sensitivity, 81.6% specificity, 76.6% PPV and 88.2% NPV at the best threshold value of < 5.3 ng/mL. The predictive value of AST and DB (A/E) were less accurate with the sensitivity less than 50%. None of the other variables was useful to predict mortality in ANP patients (data not shown).

Table 3 Logistic regression analysis of laboratory variables to differentiate survivors and non-survivors

Variable	OR	95%CI	P value
AST (E), $\mu\text{kat/L}$	1.0377	1.6514-1.3392	0.3612
α -amylase (E), U/L	0.8771	0.7657-1.0046	0.7543
DB (E), $\mu\text{mol/L}$	2.2201	1.0475-4.7051	0.6374
DB (A/E)	0.6941	0.4613-1.0445	0.5221

A: Day 1 (on admission); E: Day before the operative pancreatic debridement. AST: Aspartate aminotransferase; CI: Confidential intervals; DB: Direct bilirubin; OR: Odds ratio.

Table 4 Predictive value of laboratory variables for hospital mortality in acute necrotizing pancreatitis patients

Variables	Cutoff	Sensitivity	Specificity	AUC	95%CI	PPV	NPV	P value
AST (E), $\mu\text{kat/L}$	> 0.53	33.3%	92.0%	0.727	0.547-0.865	60.0%	79.3%	0.016
α -amylase (E), U/L	≤ 17.2	66.7%	84.0%	0.729	0.550-0.866	60.0%	87.5%	< 0.032
DB (E), $\mu\text{mol/L}$	> 4.2	44.4%	100.0%	0.782	0.608-0.905	100.0%	83.3%	< 0.001
DB(A/E)	≤ 1	22.2%	95.8%	0.764	0.584-0.894	66.7%	76.7%	0.0015

A: Day 1 (on admission); E: Day before the operative pancreatic debridement. ANP: Acute necrotizing pancreatitis; AST: Aspartate aminotransferase; AUC: area under the curve; CI: Confidential intervals; DB: Direct bilirubin; NPV: negative predictive values; PPV: positive predictive values.

Next, we attempted to evaluate whether a combination of different laboratory variables could promote the predictive accuracy further (Table 5). Notably, the combination form of $\text{AST(E)} > 0.53 \mu\text{kat/L} + \text{AML (E)} \leq 17.2 \text{ U/L} + \text{DB(E)} > 4.2 \mu\text{mol/L} + \text{DB (A/E)} < 1$ resulted in the greatest AUC (AUC: 0.935, $P < 0.0005$) than other variables, either alone or in combination.

DISCUSSION

In this study, we monitored routine laboratory variables for the purpose of their use as additional markers to assist decision-making on the timing of surgical intervention in ANP patients. Hospital mortality, as well as total and post-OPD LOS were chosen as criteria, associated with optimal OPD timing. Routine laboratory variables and their dynamic changes were examined in the preoperative period in order to compare key hematological and biochemical indices and their changes in survivors and non-survivors, as well as in ANP patients with short and long post-surgical LOS at the recommended time point of surgical intervention (about 4 wk after symptom onset). Surprisingly, the AML value within the reference range the day before the OPD was quite a reliable predictor of hospital mortality in ANP patients. One can suggest, that discrepancy between clinical picture and normal value of this laboratory index can be considered as an alarming marker for disease outcome and surgery timing. Increased values of AST and DB the day before the OPD as well as the absence of a substantial decrease of DB level in the preoperative period (A/D ratio < 1) were also reliable predictors of hospital mortality. Taken in combination, these biomarkers provided greater predictive accuracy than individual markers. Hyperbilirubinemia including increased level of DB is considered as an independent risk factor for mortality in critically ill patients[17]. Liver malfunction represents a sometimes serious and fatal complication during the ANP progression, since the liver can mediate extra pancreatic organ impairment by releasing toxic substances[18]. Hepatic injury caused by inflammatory mediators generated in ANP patients cannot only aggravate the disease course, but also develop into severe hepatic failure and can cause patient death[19]. Increased AST the day before the OPD can indicate persistent severe hepatic dysfunction. Hyperbilirubinemia can be considered as a consequence of severe hepatic dysfunction, and additionally can be a risk factor of the impairment of the oxygen-dependent bactericidal activity of innate immunity cells and as a result the sepsis development[20]. The alteration trend of variables is an important component of

Table 5 Predictive value of combined variables for hospital mortality in acute necrotizing pancreatitis patients

Multivariable model	AUC	95%CI	P value
AST (E) + AML (E)	0.791	0.618-0.911	0.016
AST (E) + DB (E)	0.784	0.610-0.906	0.0011
AML (E) + DB (E)	0.884	0.777-0.908	0.0002
AST (E) + AML (E) + DB (E)	0.884	0.728-0.968	0.003
DB (E) + DB (A/E)	0.87	0.708-0.961	0.0006
AST (E) + DB (A/E)	0.87	0.708-0.961	0.0016
AML (E) + DB (A/E)	0.84	0.674-0.945	0.0026
AST (E) + AML (E) + DB (A/E)	0.88	0.719-0.966	0.0023
AST (E) + AML (E) + DB (E) + DB (A/E)	0.935	0.792-0.991	0.0005

A: Day 1 (on admission); E: Day before the operative pancreatic debridement. ANP: Acute necrotizing pancreatitis; AST: Aspartate aminotransferase; CI: Confidential intervals; DB: Direct bilirubin.

multivariable predictive model. In the current study, we revealed that DB (A/E) had good prognostic capacity among other laboratory variables. The course of ANP is a rapidly-changing process which is too complicated to be estimated by a single measurement. The trend of laboratory indices alteration can reflect disease development more accurately, in particular when absolute baseline values are high. In this study, we emphasize the importance of combined analysis of absolute values and dynamic alterations of laboratory variables. Thus, according to our multivariable prognostic model, persistent hepatic failure along with a normal AML level should be taken into account in OPD timing as a predictive marker of a high mortality risk.

The estimated time of readiness of the ANP patient for surgery is the time period of the summation of the two most important events. First is the systemic inflammatory response syndrome (SIRS) down-regulation, since it is SIRS that is the most important cause of high mortality that accompanies surgical intervention in the early period after symptoms onset. The second is the necrotic collection encapsulation, since this phenomenon technically facilitates effective debridement. Therefore, the whole set of routine laboratory parameters should be viewed from the angle of these two events.

ANP course progresses in two phases. First phase is characterized by SIRS development with single or MOF. This phase continues at the average 10-14 d, and then consistently gives way to compensatory systemic anti-inflammatory syndrome. *Inter alia*, SIRS is usually characterized by persistent leukocytosis[21]. SIRS in ANP is commonly associated with the liver injury and, as a result with the rise of such routine laboratory indices as serum Alkaline Phosphatase, AST, ALT, TB, DB, AML and lipase levels. Therefore, routine laboratory variables such as WBC count and biochemical markers of liver injury can be indicative for the evaluation of SIRS and of Multiple Organ Dysfunction Syndrome in ANP patients.

Necrotic collection walling-off is, in effect, the development of a granulation tissue (GT) capsule around the necrotic area[22,23]. Primary function of the GT capsule is to prevent the systemic spread of inflammatory mediators (*e.g.*, cytokines and eicosanoids) and signals danger for the immune system which originated from necrotic cells. Thus, this temporary barrier is aimed at compartmentalization of the inflammatory response[24]. Another important function of the GT capsule is to protect the encapsulated area from the infection. The basis of GT is usually composed of a fibrous capsule, and its core cell component is commonly represented by fibroblasts. Fibroblasts deposit fibronectin in a soft extracellular matrix. This matrix separates necrotic collection from the surrounding tissues and can then be used for the recruitment of other cells into GT[25]. Therefore, one can suppose, that fibroblast migration into the necrotic area is a crucial step of the encapsulation. Fibroblast recruitment into the necrotic area is orchestrated by the coordinated effect of numerous cytokines and growth factors. Among others, fibroblast growth factor and platelet-derived growth factor (PDGF) are the major cytokines that initiate and afterward support fibroblast proliferation and chemotactic activity resulting in the necrotic area encapsulation[26-28]. Clinical observations of Stojek *et al*[29] indirectly confirmed this assumption. According to findings of this scientific group, serum levels of PDGF-BB is significantly increased in patients with chronic pancreatitis, which is

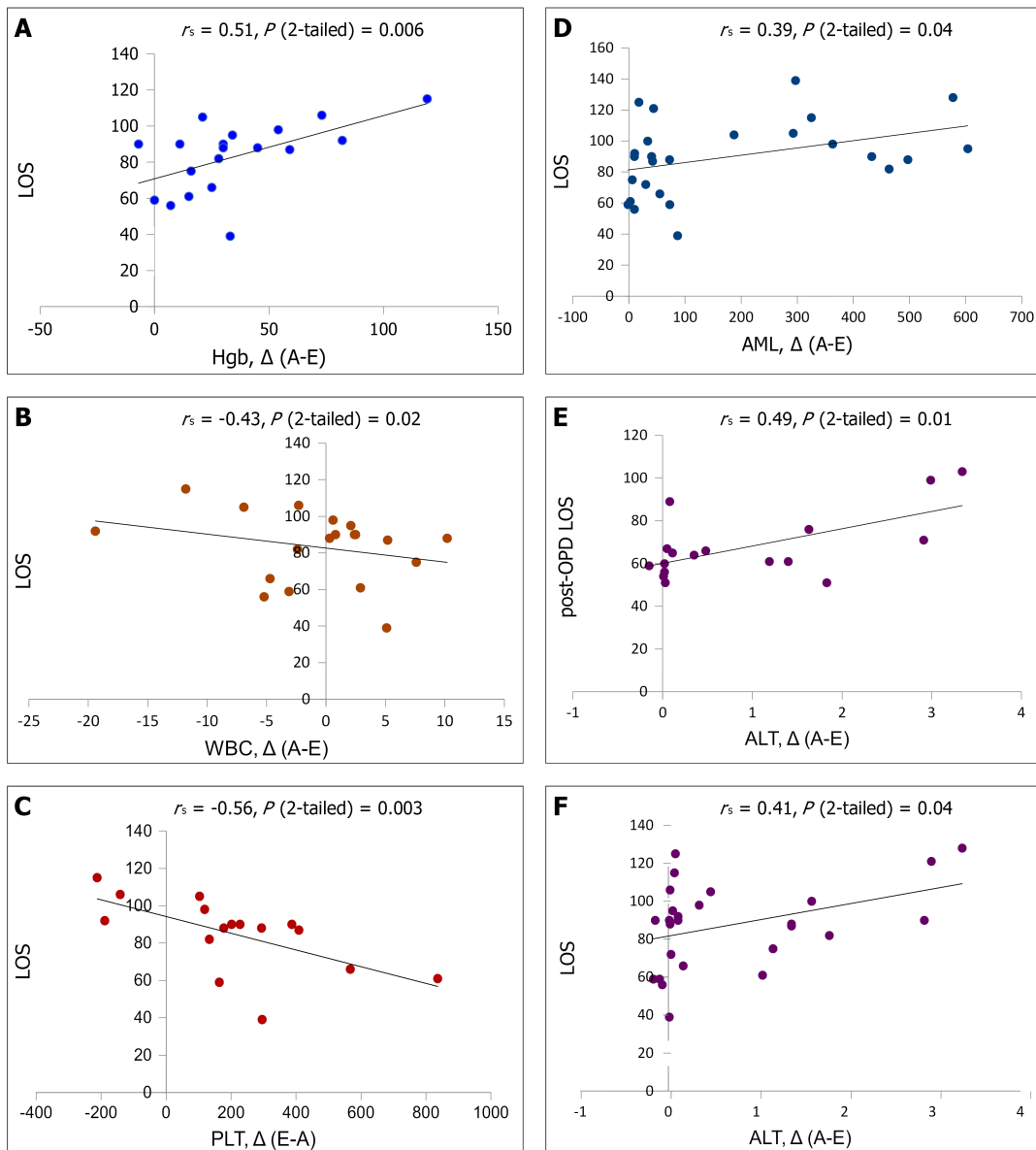


Figure 1 Correlations between dynamic changes of laboratory variables. A: Hemoglobin; B: Total white blood cell count; C: Total platelets count; D: α -amylase; E: Alanine aminotransferase; F: total and post-surgical length of stay. Δ (A-E) = value on admission – value the day before the surgery; Δ (E-A) = value the day before the surgery – value the day before the surgery. ALT: Alanine aminotransferase; AML: α -amylase; Hgb: Hemoglobin; LOS: Length of stay in hospital; OPD: Operative pancreatic debridement; PLT: Total platelets count; WBC: Total white blood cell count.

associated with chronic inflammation and fibrosis. Activated platelets represent one of the main sources of these growth factors[30,31]. Given the above, we assumed, that leukocytosis diminishing (as a marker of SIRS down-regulation) along with the increase of PLT count (as a marker of necrotic tissue encapsulation) could indicate a beneficial condition for OPD timing. In this study, a substantial progressive increase of PLT count along with moderate decrease of WBC count strongly correlated with shortened LOS. We suppose that progressive increase of PLT count in the preoperative period can be considered as one of the additional markers indicating the development of the GT capsule around the necrotic area.

There are several limitations in the present study. First, the number of patients was small, and further analysis needs to be done with a larger number of ANP patients to confirm its reproducibility. Second, comprehensive sex-centered evaluation would be more desirable considering the prevalence of female patients in the subgroup with shortened LOS. Third, it is desirable to complement the examination of the dynamic changes in PLT count with the determining of serum levels of cytokines involved in GT formation.

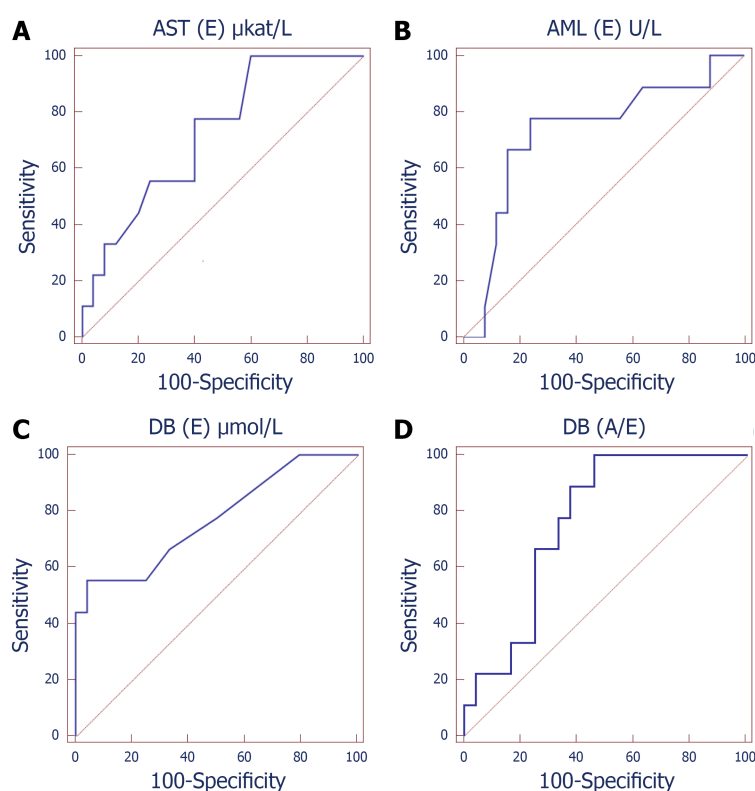


Figure 2 Receiver operating characteristic curves of aspartate aminotransferase, α -amylase, and direct bilirubin for hospital mortality prediction in acute necrotizing pancreatitis patients. A: Receiver operating characteristic (ROC) curves of aspartate aminotransferase the day before the surgery; B: ROC curves of α -amylase the day before the surgery; C: ROC curves of direct bilirubin (DB) (E) the day before the surgery; D: ROC curves of DB (A/E=value on admission/value the day before the surgery). AML: α -amylase; AST: Aspartate aminotransferase; DB: Direct bilirubin; (E): Day before the operative pancreatic debridement; (A/E): Day of admission/the day before the surgery.

CONCLUSION

By focusing on dynamic changes of routine laboratory variables in the preoperative period in ANP patients, we demonstrated that a progressive increase in PLT count along with a decrease of leukocytosis correlates with a shortened LOS and can indicate GT formation, and can be considered as an additional marker for OPD timing. Whereas persistent hepatic malfunction, which is indicated by a weak progressive decrease of DB in the preoperative period and increased AST level can signify a high risk of post-operative mortality. Thus, multifactorial analysis of dynamic changes of routine laboratory variables can be useful for a person-tailored timing of surgical intervention in ANP patients.

ARTICLE HIGHLIGHTS

Research background

Timing on invasive intervention in patients with acute necrotizing pancreatitis is linked to the degree of encapsulation in necrotic collections. Assessment of the degree of encapsulation of necrotic collections is influenced by imaging and clinical features. However, the pathophysiology and time course of necrotic collection walling-off are not fully understood and vary significantly between patients.

Research motivation

Additional markers of necrosis encapsulation might assist decision-making on the timing of surgical intervention. The search for these markers should be based on current knowledge of the biology of necrotic tissue encapsulation. In our opinion, it is logical to search for such markers among routine laboratory parameters traditionally used in acute necrotizing pancreatitis (ANP) patients, considering simplicity and cost-efficacy of routine laboratory methodologies.

Research objectives

To evaluate laboratory variables in ANP patients in the preoperative period for the purpose of their use for the timing of surgery.

Research methods

This was a retrospective study of 53 ANP patients undergoing operative pancreatic debridement (OPD). Dynamic changes of routine hematological and biochemical indices were examined in the preoperative period. Patients were divided into survivors and non-survivors. Survivors were further divided into a subgroup with short and long post-surgery length of stay (LOS) in hospital. Correlation analysis was used to evaluate the association of laboratory variables with LOS. Logistic regression was used to assess risk factors for patient mortality.

Research results

Progressive increase of platelet count in the preoperative period was associated with shortened total and post-surgery LOS. Increased aspartate aminotransferase and direct bilirubin (DB) levels the day before the OPD as well as the absence of substantial decrease of DB level in preoperative period were reliable predictors for ANP patient mortality.

Research conclusions

Multifactorial analysis of dynamic changes of routine laboratory variables can be useful for a person-tailored timing of surgical intervention in ANP patients.

Research perspectives

Comprehensive sex-centered evaluation of routine laboratory variables should be performed considering sex differences in the course of inflammation. Dynamic changes of serum levels of cytokines associated with fibro granulation tissue formation should also be studied for the person-tailored invasive intervention timing.

ACKNOWLEDGEMENTS

The authors are very grateful to all participants recruited in this study. The authors express their sincere thanks to Dr. Olexander Gorbach for the technical support.

REFERENCES

- 1 **Boxhoorn L**, Voermans RP, Bouwense SA, Bruno MJ, Verdonk RC, Boermeester MA, van Santvoort HC, Besselink MG. Acute pancreatitis. *Lancet* 2020; **396**: 726-734 [PMID: [32891214](#) DOI: [10.1016/S0140-6736\(20\)31310-6](#)]
- 2 **Cofaru FA**, Nica S, FierbinȚeanu-Braticevici C. Assessment of severity of acute pancreatitis over time. *Rom J Intern Med* 2020; **58**: 47-54 [PMID: [32097123](#) DOI: [10.2478/rjim-2020-0003](#)]
- 3 **Aparna D**, Kumar S, Kamalkumar S. Mortality and morbidity in necrotizing pancreatitis managed on principles of step-up approach: 7 years experience from a single surgical unit. *World J Gastrointest Surg* 2017; **9**: 200-208 [PMID: [29109852](#) DOI: [10.4240/wjgs.v9.i10.200](#)]
- 4 **Leonard-Murali S**, Lezotte J, Kalu R, Blyden DJ, Patton JH, Johnson JL, Gupta AH. Necrotizing pancreatitis: A review for the acute care surgeon. *Am J Surg* 2021; **221**: 927-934 [PMID: [32878690](#) DOI: [10.1016/j.amjsurg.2020.08.027](#)]
- 5 **Maatman TK**, Flick KF, Roch AM, Zyromski NJ. Operative pancreatic debridement: Contemporary outcomes in changing times. *Pancreatology* 2020; **20**: 968-975 [PMID: [32622760](#) DOI: [10.1016/j.pan.2020.05.024](#)]
- 6 **van Santvoort HC**, Bakker OJ, Bollen TL, Besselink MG, Ahmed Ali U, Schrijver AM, Boermeester MA, van Goor H, Dejong CH, van Eijck CH, van Ramshorst B, Schaapherder AF, van der Harst E, Hofker S, Nieuwenhuijs VB, Brink MA, Kruij PM, Manusama ER, van der Schelling GP, Karsten T, Hesselink EJ, van Laarhoven CJ, Rosman C, Bosscha K, de Wit RJ, Houdijk AP, Cuesta MA, Wahab PJ, Gooszen HG; Dutch Pancreatitis Study Group. A conservative and minimally invasive approach to necrotizing pancreatitis improves outcome. *Gastroenterology* 2011; **141**: 1254-1263 [PMID: [21741922](#) DOI: [10.1053/j.gastro.2011.06.073](#)]
- 7 **Wroński M**, Cebulski W, Witkowski B, Jankowski M, Kluciński A, Krasnodębski IW, Słodkowski M. Comparison between minimally invasive and open surgical treatment in necrotizing pancreatitis. *J Surg Res* 2017; **210**: 22-31 [PMID: [28457332](#) DOI: [10.1016/j.jss.2016.10.022](#)]
- 8 **Yin T**, Wang CY. [Rediscussion of the individualized surgical intervention and timing for necrotizing pancreatitis]. *Zhonghua Wai Ke Za Zhi* 2019; **57**: 1-5 [PMID: [31510724](#) DOI: [10.3760/cma.j.issn.0360-3053.2019.01.001](#)]

- 10.3760/cma.j.issn.0529-5815.2019.10.001]
- 9 **Garg PK**, Zyromski NJ, Freeman ML. Infected Necrotizing Pancreatitis: Evolving Interventional Strategies From Minimally Invasive Surgery to Endoscopic Therapy-Evidence Mounts, But One Size Does Not Fit All. *Gastroenterology* 2019; **156**: 867-871 [PMID: [30776344](#) DOI: [10.1053/j.gastro.2019.02.015](#)]
 - 10 **Baron TH**, DiMaio CJ, Wang AY, Morgan KA. American Gastroenterological Association Clinical Practice Update: Management of Pancreatic Necrosis. *Gastroenterology* 2020; **158**: 67-75.e1 [PMID: [31479658](#) DOI: [10.1053/j.gastro.2019.07.064](#)]
 - 11 **Leppäniemi A**, Tolonen M, Tarasconi A, Segovia-Lohse H, Gamberini E, Kirkpatrick AW, Ball CG, Parry N, Sartelli M, Wolbrink D, van Goor H, Baiocchi G, Ansaloni L, Biffi W, Coccolini F, Di Saverio S, Kluger Y, Moore E, Catena F. 2019 WSES guidelines for the management of severe acute pancreatitis. *World J Emerg Surg* 2019; **14**: 27 [PMID: [31210778](#) DOI: [10.1186/s13017-019-0247-0](#)]
 - 12 **Besselink MG**, Verwer TJ, Schoenmaeckers EJ, Buskens E, Ridwan BU, Visser MR, Nieuwenhuijs VB, Gooszen HG. Timing of surgical intervention in necrotizing pancreatitis. *Arch Surg* 2007; **142**: 1194-1201 [PMID: [18086987](#) DOI: [10.1001/archsurg.142.12.1194](#)]
 - 13 **Banks PA**, Bollen TL, Dervenis C, Gooszen HG, Johnson CD, Sarr MG, Tsiotos GG, Vege SS; Acute Pancreatitis Classification Working Group. Classification of acute pancreatitis--2012: revision of the Atlanta classification and definitions by international consensus. *Gut* 2013; **62**: 102-111 [PMID: [23100216](#) DOI: [10.1136/gutjnl-2012-302779](#)]
 - 14 **van Grinsven J**, van Brunschot S, van Baal MC, Besselink MG, Fockens P, van Goor H, van Santvoort HC, Bollen TL; Dutch Pancreatitis Study Group. Natural History of Gas Configurations and Encapsulation in Necrotic Collections During Necrotizing Pancreatitis. *J Gastrointest Surg* 2018; **22**: 1557-1564 [PMID: [29752684](#) DOI: [10.1007/s11605-018-3792-z](#)]
 - 15 **Susak IaM**, Tkachenko OA, Malysh IR, Dirda OO, Fedorchuk OH. [Prognostication of course and treatment of peripancreatic infiltrate in patients, suffering an acute necrotic pancreatitis]. *Klin Khir* 2014; **20**-22 [PMID: [25097970](#)]
 - 16 **Kim WR**, Flamm SL, Di Bisceglie AM, Bodenheimer HC; Public Policy Committee of the American Association for the Study of Liver Disease. Serum activity of alanine aminotransferase (ALT) as an indicator of health and disease. *Hepatology* 2008; **47**: 1363-1370 [PMID: [18366115](#) DOI: [10.1002/hep.22109](#)]
 - 17 **Nagae M**, Egi M, Kubota K, Makino S, Mizobuchi S. Association of direct bilirubin level with postoperative outcome in critically ill postoperative patients. *Korean J Anesthesiol* 2018; **71**: 30-36 [PMID: [29441172](#) DOI: [10.4097/kjae.2018.71.1.30](#)]
 - 18 **Miyahara S**, Isaji S. Liver injury in acute pancreatitis and mitigation by continuous arterial infusion of an antibiotic via the superior mesenteric artery. *Pancreas* 2001; **23**: 204-211 [PMID: [11484923](#) DOI: [10.1097/00006676-200108000-00011](#)]
 - 19 **Zhang XP**, Wang L, Zhang J. Study progress on mechanism of severe acute pancreatitis complicated with hepatic injury. *J Zhejiang Univ Sci B* 2007; **8**: 228-236 [PMID: [17444596](#) DOI: [10.1631/jzus.2007.B0228](#)]
 - 20 **Field E**, Horst HM, Rubinfeld IS, Copeland CF, Waheed U, Jordan J, Barry A, Brandt MM. Hyperbilirubinemia: a risk factor for infection in the surgical intensive care unit. *Am J Surg* 2008; **195**: 304-6; discussion 306 [PMID: [18206848](#) DOI: [10.1016/j.amjsurg.2007.12.010](#)]
 - 21 **Caserta S**, Mengozzi M, Kern F, Newbury SF, Ghezzi P, Llewelyn MJ. Severity of Systemic Inflammatory Response Syndrome Affects the Blood Levels of Circulating Inflammatory-Relevant MicroRNAs. *Front Immunol* 2017; **8**: 1977 [PMID: [29459855](#) DOI: [10.3389/fimmu.2017.01977](#)]
 - 22 **Kokosis G**, Perez A, Pappas TN. Surgical management of necrotizing pancreatitis: an overview. *World J Gastroenterol* 2014; **20**: 16106-16112 [PMID: [25473162](#) DOI: [10.3748/wjg.v20.i43.16106](#)]
 - 23 **Boškoski I**, Costamagna G. Walled-off pancreatic necrosis: where are we? *Ann Gastroenterol* 2014; **27**: 93-94 [PMID: [24733647](#)]
 - 24 **Cavaillon JM**, Annane D. Compartmentalization of the inflammatory response in sepsis and SIRS. *J Endotoxin Res* 2006; **12**: 151-170 [PMID: [16719987](#) DOI: [10.1179/096805106X102246](#)]
 - 25 **Alhajj M**, Bansal P, Goyal A. Physiology, Granulation Tissue. 2020 Nov 2. In: StatPearls [Internet]. Treasure Island (FL): StatPearls Publishing; 2021 Jan- [PMID: [32119289](#)]
 - 26 **Tu HJ**, Zhao CF, Chen ZW, Lin W, Jiang YC. Fibroblast Growth Factor (FGF) Signaling Protects Against Acute Pancreatitis-Induced Damage by Modulating Inflammatory Responses. *Med Sci Monit* 2020; **26**: e920684 [PMID: [32283546](#) DOI: [10.12659/MSM.920684](#)]
 - 27 **di Mola FF**, Friess H, Riesle E, Koliopanos A, Büchler P, Zhu Z, Brigstock DR, Korc M, Büchler MW. Connective tissue growth factor is involved in pancreatic repair and tissue remodeling in human and rat acute necrotizing pancreatitis. *Ann Surg* 2002; **235**: 60-67 [PMID: [11753043](#) DOI: [10.1097/00006658-200201000-00008](#)]
 - 28 **Johnson CL**, Weston JY, Chadi SA, Fazio EN, Huff MW, Kharitonov A, Köester A, Pin CL. Fibroblast growth factor 21 reduces the severity of cerulein-induced pancreatitis in mice. *Gastroenterology* 2009; **137**: 1795-1804 [PMID: [19664632](#) DOI: [10.1053/j.gastro.2009.07.064](#)]
 - 29 **Stojek M**, Adrych K, Rojek L, Smoczynski M, Sledzinski T, Szrok S, Swierczynski J. Decreased serum platelet derived growth factor BB levels in acute and increased in chronic pancreatitis. *World J Gastroenterol* 2014; **20**: 13127-13132 [PMID: [25278706](#) DOI: [10.3748/wjg.v20.i36.13127](#)]
 - 30 **Eisinger F**, Patzelt J, Langer HF. The Platelet Response to Tissue Injury. *Front Med (Lausanne)* 2018; **5**: 317 [PMID: [30483508](#) DOI: [10.3389/fmed.2018.00317](#)]
 - 31 **Deptula M**, Karpowicz P, Wardowska A, Sass P, Sosnowski P, Mieczkowska A, Filipowicz N,

Dzierżyńska M, Sawicka J, Nowicka E, Langa P, Schumacher A, Cichorek M, Zieliński J, Kondej K, Kasprzykowski F, Czupryn A, Janus Ł, Mucha P, Skowron P, Piotrowski A, Sachadyn P, Rodziewicz-Motowidło S, Piśkuła M. Development of a Peptide Derived from Platelet-Derived Growth Factor (PDGF-BB) into a Potential Drug Candidate for the Treatment of Wounds. *Adv Wound Care (New Rochelle)* 2020; **9**: 657-675 [PMID: [33124966](#) DOI: [10.1089/wound.2019.1051](#)]



Published by **Baishideng Publishing Group Inc**
7041 Koll Center Parkway, Suite 160, Pleasanton, CA 94566, USA

Telephone: +1-925-3991568

E-mail: bpgoffice@wjgnet.com

Help Desk: <https://www.f6publishing.com/helpdesk>

<https://www.wjgnet.com>

