

World Journal of *Gastrointestinal Surgery*

World J Gastrointest Surg 2022 October 27; 14(10): 1089-1178



Contents

Monthly Volume 14 Number 10 October 27, 2022

REVIEW

- 1089 Drain fluid biomarkers for prediction and diagnosis of clinically relevant postoperative pancreatic fistula: A narrative review

Rykina-Tameeva N, Samra JS, Sahni S, Mittal A

ORIGINAL ARTICLE

Retrospective Study

- 1107 Performing robot-assisted pylorus and vagus nerve-preserving gastrectomy for early gastric cancer: A case series of initial experience

Zhang C, Wei MH, Cao L, Liu YF, Liang P, Hu X

- 1120 Long-term efficacy and safety of cap-assisted endoscopic sclerotherapy with long injection needle for internal hemorrhoids

Xie YT, Yuan Y, Zhou HM, Liu T, Wu LH, He XX

- 1131 Reconstructing the portal vein through a posterior pancreatic tunnel: New choice for portal vein thrombosis during liver transplantation

Zhao D, Huang YM, Liang ZM, Zhang KJ, Fang TS, Yan X, Jin X, Zhang Y, Tang JX, Xie LJ, Zeng XC

- 1141 Topological approach of liver segmentation based on 3D visualization technology in surgical planning for split liver transplantation

Zhao D, Zhang KJ, Fang TS, Yan X, Jin X, Liang ZM, Tang JX, Xie LJ

Observational Study

- 1150 Can DKI-MRI predict recurrence and invasion of peritumoral zone of hepatocellular carcinoma after transcatheter arterial chemoembolization?

Cao X, Shi H, Dou WQ, Zhao XY, Zheng YX, Ge YP, Cheng HC, Geng DY, Wang JY

CASE REPORT

- 1161 Cecocutaneous fistula diagnosed by computed tomography fistulography: A case report

Wu TY, Lo KH, Chen CY, Hu JM, Kang JC, Pu TW

- 1169 Immunoglobulin G4-related disease in the sigmoid colon in patient with severe colonic fibrosis and obstruction: A case report

Zhan WL, Liu L, Jiang W, He FX, Qu HT, Cao ZX, Xu XS

ABOUT COVER

Editorial Board Member of *World Journal of Gastrointestinal Surgery*, Anil Kumar Agarwal, FACS, FRCS (Hon), MBBS, MCh, MS, Director, Professor, Surgeon, Department of Gastrointestinal Surgery and Liver Transplant, GB Pant Institute of Postgraduate Medical Education and Research and Maulana Azad Medical College, Delhi University, New Delhi 110002, India. aka.gis@gmail.com

AIMS AND SCOPE

The primary aim of *World Journal of Gastrointestinal Surgery* (WJGS, *World J Gastrointest Surg*) is to provide scholars and readers from various fields of gastrointestinal surgery with a platform to publish high-quality basic and clinical research articles and communicate their research findings online.

WJGS mainly publishes articles reporting research results and findings obtained in the field of gastrointestinal surgery and covering a wide range of topics including biliary tract surgical procedures, biliopancreatic diversion, colectomy, esophagectomy, esophagostomy, pancreas transplantation, and pancreatectomy, etc.

INDEXING/ABSTRACTING

The WJGS is now abstracted and indexed in Science Citation Index Expanded (SCIE, also known as SciSearch®), Current Contents/Clinical Medicine, Journal Citation Reports/Science Edition, PubMed, PubMed Central, Reference Citation Analysis, China National Knowledge Infrastructure, China Science and Technology Journal Database, and Superstar Journals Database. The 2022 Edition of Journal Citation Reports® cites the 2021 impact factor (IF) for WJGS as 2.505; IF without journal self cites: 2.473; 5-year IF: 3.099; Journal Citation Indicator: 0.49; Ranking: 104 among 211 journals in surgery; Quartile category: Q2; Ranking: 81 among 93 journals in gastroenterology and hepatology; and Quartile category: Q4.

RESPONSIBLE EDITORS FOR THIS ISSUE

Production Editor: Rui-Rui Wu, Production Department Director: Xiang Li, Editorial Office Director: Jia-Ru Fan.

NAME OF JOURNAL

World Journal of Gastrointestinal Surgery

ISSN

ISSN 1948-9366 (online)

LAUNCH DATE

November 30, 2009

FREQUENCY

Monthly

EDITORS-IN-CHIEF

Peter Schemmer

EDITORIAL BOARD MEMBERS

<https://www.wjgnet.com/1948-9366/editorialboard.htm>

PUBLICATION DATE

October 27, 2022

COPYRIGHT

© 2022 Baishideng Publishing Group Inc

INSTRUCTIONS TO AUTHORS

<https://www.wjgnet.com/bpg/gerinfo/204>

GUIDELINES FOR ETHICS DOCUMENTS

<https://www.wjgnet.com/bpg/GerInfo/287>

GUIDELINES FOR NON-NATIVE SPEAKERS OF ENGLISH

<https://www.wjgnet.com/bpg/gerinfo/240>

PUBLICATION ETHICS

<https://www.wjgnet.com/bpg/GerInfo/288>

PUBLICATION MISCONDUCT

<https://www.wjgnet.com/bpg/gerinfo/208>

ARTICLE PROCESSING CHARGE

<https://www.wjgnet.com/bpg/gerinfo/242>

STEPS FOR SUBMITTING MANUSCRIPTS

<https://www.wjgnet.com/bpg/GerInfo/239>

ONLINE SUBMISSION

<https://www.f6publishing.com>



Immunoglobulin G4-related disease in the sigmoid colon in patient with severe colonic fibrosis and obstruction: A case report

Wen-Li Zhan, Liang Liu, Wei Jiang, Fang-Xun He, Hai-Tao Qu, Zhi-Xin Cao, Xiang-Shang Xu

Specialty type: Gastroenterology and hepatology

Provenance and peer review:

Unsolicited article; Externally peer reviewed.

Peer-review model: Single blind

Peer-review report's scientific quality classification

Grade A (Excellent): 0

Grade B (Very good): 0

Grade C (Good): C, C, C

Grade D (Fair): D

Grade E (Poor): 0

P-Reviewer: Ashihara N, Japan; Cai W, China; Vujasinovic M, Sweden;

Received: July 10, 2022

Peer-review started: July 10, 2022

First decision: August 19, 2022

Revised: September 3, 2022

Accepted: October 18, 2022

Article in press: October 18, 2022

Published online: October 27, 2022



Wen-Li Zhan, Liang Liu, Wei Jiang, Fang-Xun He, Zhi-Xin Cao, Xiang-Shang Xu, Department of Gastrointestinal Surgery, Tongji Hospital, Huazhong University of Science and Technology, Wuhan 430030, Hubei Province, China

Hai-Tao Qu, Anorectal Disease Center, The First Affiliated Hospital of Henan University of Traditional Chinese Medicine, Zhengzhou 450000, Henan Province, China

Corresponding author: Xiang-Shang Xu, MD, PhD, Associate Professor, Doctor, Department of Gastrointestinal Surgery, Tongji Hospital, Huazhong University of Science and Technology, No. 1095 Jiefang Avenue, Wuhan 430030, Hubei Province, China. xsxu@tjh.tjmu.edu.cn

Abstract

BACKGROUND

Immunoglobulin G4-related disease (IgG4-RD) is an immune-mediated condition characterized by abundant IgG4 positive plasma cells and fibrosis in the affected tissues. It affects most parts of the body; however, there are not many reports on IgG4-RD involving the colon.

CASE SUMMARY

A 50-year-old man complaining of intermittent fever for more than two years was referred to our hospital. Based on various investigations before surgery, we diagnosed him with chronic perforation of the sigmoid colon caused by inflammatory change or tumor. IgG blood tests before the operation suggested IgG4-RD, and postoperative pathology confirmed this prediction.

CONCLUSION

We present a patient with IgG4-RD with colon involvement, which is an uncommon site. This report will expand the understanding of IgG4-RD in unknown tissues.

Key Words: Immunoglobulin G4-related disease; Chronic colon disease; Plasma cells; Fibrosis; Obstruction; Case report

©The Author(s) 2022. Published by Baishideng Publishing Group Inc. All rights reserved.

Core Tip: Immunoglobulin G4-related disease (IgG4-RD) is characterized by abundant IgG4 positive plasma cells and fibrosis in the affected tissues. It can affect most parts of the body, but there were not many reports of IgG4-RD in the intestines. This patient was an IgG4-RD case to be reported in the colon, which was identified by computed tomography, magnetic resonance imaging, pathology and blood tests of IgGs. This case report will help expand the understanding of IgG4-RD in some unknown tissues.

Citation: Zhan WL, Liu L, Jiang W, He FX, Qu HT, Cao ZX, Xu XS. Immunoglobulin G4-related disease in the sigmoid colon in patient with severe colonic fibrosis and obstruction: A case report. *World J Gastrointest Surg* 2022; 14(10): 1169-1178

URL: <https://www.wjgnet.com/1948-9366/full/v14/i10/1169.htm>

DOI: <https://dx.doi.org/10.4240/wjgs.v14.i10.1169>

INTRODUCTION

Immunoglobulin G4-related disease (IgG4-RD) is an immune-mediated condition characterized by infiltration of IgG4 positive plasma cells and fibrosis in the affected tissues[1]. It was first identified as a distinct disease in 2003[2]. Due to lack of understanding in the past, this condition was misdiagnosed or could not be diagnosed. In recent years, awareness of the disease has increased over the past 20 years. The American College of Rheumatology (ACR) and European League Against Rheumatism (EULAR) IgG4-RD criteria were also formed and published[3]. Hence, many patients were diagnosed with IgG4-RD and received personalized treatment. Although it can affect almost any part of the body, it shows a strong preference for some organs (Figure 1), including salivary glands, lacrimal glands and orbitals, pancreas and biliary ducts, lungs, kidneys, aorta and retroperitoneum, meninges, and thyroid gland[4, 5]. Typical manifestations of IgG4-RD are enlarged salivary and lacrimal glands, orbital pseudotumor, pancreatitis, sclerosing cholangitis, retroperitoneal fibrosis, tubular interstitial nephritis, and Liddell's thyroiditis[6].

Histopathology is still required to confirm the diagnosis, with the main histological features being IgG4-positive plasma cell infiltration, storiform fibrosis, and obliterative phlebitis[1]. Increased IgG4-positive plasma cells are seen in nearly all affected tissues; however, there is no specific clinical manifestation. Certain diseases such as lymphoma, vasculitis, and inflammatory bowel disease may also exhibit increased IgG4-positive plasma cells without storiform fibrosis and obliterative phlebitis[7,8]. In addition, the latter two features are not evident in the bone marrow and lymph nodes, making these two sites undesirable for histopathological investigations[9]. Additionally, the imaging features of IgG4-RD are as follows: A diffusely enlarged pancreas surrounded by capsule-like edema ("sausage-shaped" pancreas) and the anterolateral aorta wrapped by soft tissue in the case of retroperitoneal fibrosis[10-12]. However, isolated radiological findings are insufficient for diagnosis. ¹⁸Fluorodeoxyglucose-positron emission tomography (PET) can scan the entire body for staging and help find the sampling site[13].

IgG4-RD's incidence is still underestimated because the disease is not clinically manifested and rarely leads to immediate organ failure[14]. Many patients are diagnosed accidentally or through histopathology after surgical resection[15]. IgG4-RD is a multi-organ disease that can easily be confused with malignancies, infections, or other conditions. It is also characterized by slow disease progression, but exacerbations to fibrotic disease often lead to irreversible organ dysfunction[8]. Therefore, early recognition and diagnosis are of vital importance.

Intestinal involvement is not common in IgG4-RD, although sporadic reports have been published [16-19]. Therefore, more cases are needed to demonstrate that IgG4-RD can involve the gut. In this article, we will report the data of a patient with IgG4-RD involving the sigmoid colon, hoping to increase the understanding of IgG4-RD disease.

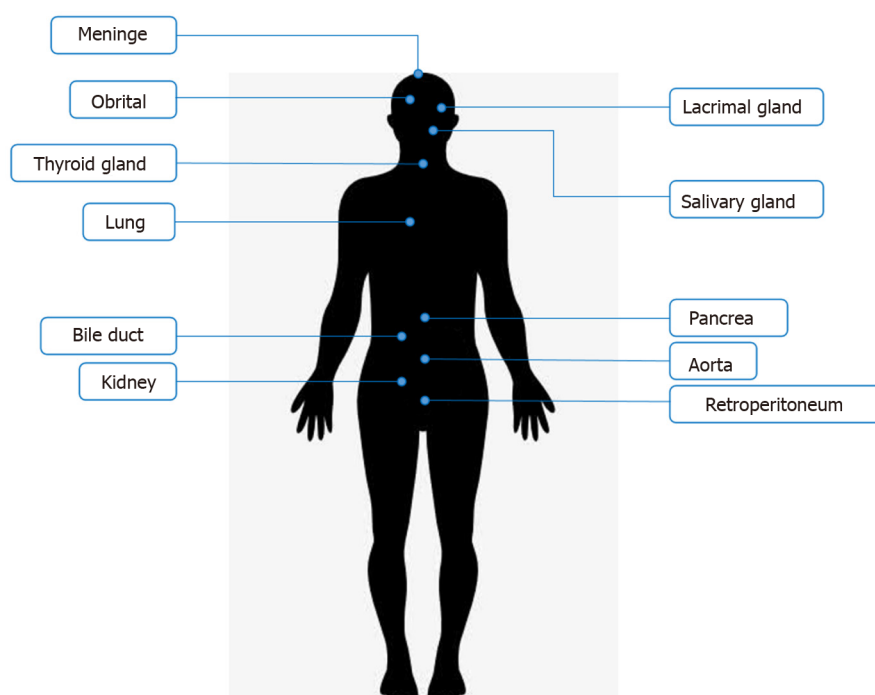
CASE PRESENTATION

Chief complaints

A 50-year-old man presented with intermittent fever for more than two years.

History of present illness

Intermittent fever occurred for more than two years. The body temperature remained at approximately 37.5 °C, and the fever usually occurred in the afternoon for 3-4 d a week. The fever was rarely high and often resolved without any treatment. The patient had been to the department of infectious diseases for treatment; however, no specific infection was found.



DOI: 10.4240/wjgs.v14.i10.1169 Copyright ©The Author(s) 2022.

Figure 1 Commonly affected organs in immunoglobulin G4-related disease. Immunoglobulin G4-related disease often appears in salivary glands, lacrimal glands, pancreas, and biliary tract.

Six months ago, he had frequent and urgent micturition and increased nocturia. He went to the urology department, where prostatic hyperplasia was considered after ultrasound detection, but there was no cystoscopy or biopsy to be done. Then he was treated with tamsulosin hydrochloride and the symptoms, although partially alleviated, did not disappear fully.

Two months ago, he began to experience increased bowel movements and a feeling of incomplete bowel movements, accompanied by a bloated lower abdomen. So he came to the Gastrointestinal Surgery Clinic, and we ordered a colonoscopy and admitted him to the hospital.

History of past illness

Our patient had a 30-year-old history of hepatitis B without blatant virus replication. He also had allergic rhinitis for > 20 years, with the onset usually in August and September every year and relieved by itself after the season. He was allergic to ragweed pollen in 2017 and was cured by mometasone furoate nasal spray combined with cetirizine hydrochloride. He has never developed sinusitis.

Personal and family history

The main drugs used in the patient's medical records were interferon, cetirizine hydrochloride, mometasone furoate, and tamsulosin hydrochloride. He did not have a smoking and alcohol consumption history.

His family had no apparent history of colon tumors and autoimmune disease. Both his father and mother had died of cardiovascular diseases. Additionally, his mother had a history of hepatitis B.

Physical examination

Physical examination showed mild tenderness above the symphysis pubis in the lower abdomen without rebound pain. No other abnormality was seen.

Laboratory examinations

The white blood cells count was normal as the baseline level, and hemoglobin was 92 g/L. The biochemical blood tests were within the normal range, including transaminases, bilirubin, amylase, and lipase. The tumor markers carcinoembryonic assay, cancer antigen 19-9, cancer antigen 72-4, and prostate-specific antigen were normal, while the urine culture and tuberculosis screening tests were negative. Nevertheless, this patient had a positive fecal occult blood test.

Imaging examinations

PET/computed tomography (CT) revealed a thick-walled cystic structure above the bladder, which was approximately 8.1 cm × 7.1 cm in size with increased radioactive uptake, and the maximum standard

uptake value (SUVmax) was 6.0. Thus, a diagnosis of a tumor or chronic infection-related mass was made. PET-CT examination did not find high uptake in the parotid gland, pancreas, biliary tract, and prostate (Figure 2).

An enhancement CT scan of the entire abdomen showed a noticeable expansion of the proximal sigmoid colon with significant intestinal content. The intestinal wall was thickened with contrast enhancement, and the boundary between the sigmoid colon and bladder was not evident in the apparent bladder compression (Figure 3). Hence, the possibility of the colonic diverticulum with infection or tumor was considered. We scanned the pancreas by CT and magnetic resonance imaging (Figure 4) and found an enlarged pancreas similar to the “sausage-shaped” pancreas finding in IgG4-RD.

Endoscopy and biopsy pathology

In the electronic colonoscopy, the lesion was located at the sigmoid colon. It was about 40 cm away from the anus with a blind cavity of 6 cm in diameter. The intestinal cavity is next to the blind hole with a large number of feces. Therefore, the colonoscope could no longer observe upwards (Figure 5).

A tissue biopsy was performed on the thickened and enlarged part of the sigmoid colon. While the intestinal wall of the biopsy was hard, the bleeding was negligible. The biopsy pathology chiefly showed inflammatory necrotic and granulomatous tissue; no defined tumorous cells were seen (Figure 6).

Initial diagnosis

Based on all the preoperational investigations, the initial diagnosis was an inflammatory disease of the sigmoid colon with chronic intestinal perforation, with a localized pelvic abscess formed between the sigmoid colon and bladder. However, the possibility of sigmoid colon tumors could not be ruled out.

Further diagnostic work-up

After the operation, pathological results (Figure 7) showed multiple ulcers distributed in the diseased intestinal wall. The ulcers were surrounded by obliterative phlebitis, widespread inflammatory granulation, and fibrous tissue. Many plasma cells and neutrophils infiltrated the lesion tissues. Furthermore, immunohistochemistry showed high IgG4-positive cells in the diseased tissues (IgG4⁺/IgG⁺ ratio was about 60%, IgG4⁺/HPF was about 110 cells). Therefore, the pathological diagnosis was IgG4-RD in the sigmoid colon.

Immunology-related blood indices (Tables 1 and 2) showed that the IgG4 level was 1.830 g/L, which was higher than normal (for IgG4-RD, the cut-off value is > 1.35 g/L).

FINAL DIAGNOSIS

Combined with pathology results, immunohistochemistry, and blood IgG indices, we diagnosed this patient with IgG4-RD involved sigmoid colon and pancreas.

TREATMENT

After signing the informed consent from the patient, we performed exploratory laparoscopic surgery, and during the surgery, we found that the patient's sigmoid colon was too long, and the proximal sigmoid colon moved down and attached to the left side of the bladder, forming a 6 cm × 6 cm mass. There were no apparent abnormalities in the stomach, small intestine, and the rest of the colon and rectum. We tried to separate the periphery of the mass with a harmonic ultrasonic knife; however, the mass was very hard and closely adherent to the bladder. Therefore, the separation could not be completed under laparoscopy (Figure 8). We then switched to open surgery and used an electric knife to separate the sigmoid colon and mass from the bladder carefully. However, the electrosurgical resection was extremely difficult because the mass's boundary was unclear. Unlike the wall in common chronic abscesses, it was tough and similar to severe fibrotic tissue. After careful separation, we performed sigmoid resection plus descending colorectal anastomosis, and in order to prevent anastomotic leakage, we also performed transverse colostomy. The mass (mainly was the thicken colon wall, about 6 cm × 6 cm) and approximately 20 cm sigmoid colon were removed; however, many feces remained in the proximal colon, which might be caused by stenosis of the intestinal cavity and incomplete obstruction due to the lesion mass compression.

Table 1 Rheumatism immunoassay results

| Test items | Results | Reference interval |
|--|----------|--------------------|
| Antinuclear antibody | Negative | Negative |
| Anti-nuclear chromatin antibody | 1.0 | ≤ 4.0 negative |
| Anti-RNP-A antibody | < 0.2 | < 1.0 negative |
| Anti-RNP-68 antibody | < 0.2 | < 1.0 negative |
| Anti-Sm/nRNP antibody | < 0.2 | < 1.0 negative |
| Anti-Sm antibody | < 0.2 | < 1.0 negative |
| Anti-SS-A antibody | < 0.2 | < 1.0 negative |
| Anti-Ro-52 antibody | < 0.2 | < 1.0 negative |
| Anti-SS-B antibody | < 0.2 | < 1.0 negative |
| Anti-Sci-70 antibody | < 0.2 | < 1.0 negative |
| Anti-Jo-1 antibody | < 0.2 | < 1.0 negative |
| Anti-ribosomal p protein antibody | < 0.2 | < 1.0 negative |
| Anti-centromere b protein antibody | < 0.2 | < 1.0 negative |
| Antineutrophil cytoplasmic antibody | Negative | Negative |
| Anti-protease 3 antibody | < 0.2 | < 1.0 negative |
| Anti-myeloperoxidase antibody | < 0.2 | < 1.0 negative |
| Anti-glomerular basement membrane antibody | < 0.2 | < 1.0 negative |

Table 2 Immunoglobulin G related indexes detection

| Test items | Results | Reference interval |
|--------------|---------|--|
| IgG | 19.2 | 7.51-15.6 |
| IgA | 3.23 | 0.82-4.53 |
| IgM | 0.64 | 0.46-3.04 |
| Complement 3 | 0.89 | 0.65-1.39 |
| Complement 4 | 0.24 | 0.16-0.38 |
| IgG1 | 10.20 | 4.05-10.11 |
| IgG2 | 8.26 | 1.69-7.86 |
| IgG3 | 0.368 | 0.11-0.85 |
| IgG4 | 1.890 | 0.03-2.01 for IgG4-RD, cutoff value > 1.35 |

IgG4-RD: Immunoglobulin G4-related disease.

OUTCOME AND FOLLOW-UP

The patient recovered quickly after the operation and underwent a transverse colostomy three months later. We asked the rheumatology department and immunology doctors to provide a glucocorticoid treatment plan as follow-up treatment. After three months of treatment, the serum IgG4 level decreased to near the normal level. The patient did not have any abdominal discomfort and urination problems and also gained 5 kg in weight relative to before the operation.

DISCUSSION

The 2019 ACR and EULAR classification criteria for IgG4-RD (2019 ACR/EULAR IgG4-RD Criteria) are essential in understanding and treating IgG4-RD[3]. Although they list intestinal involvement as an

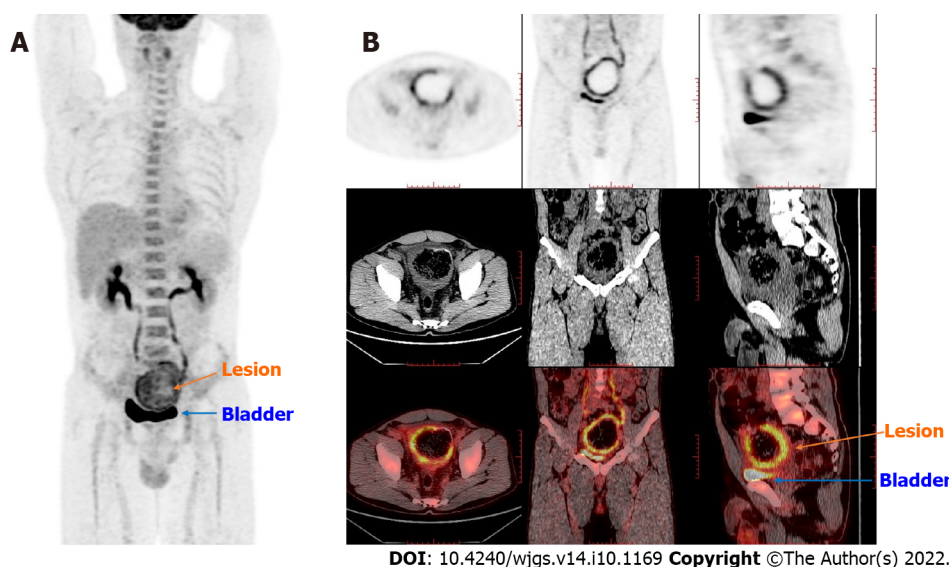


Figure 2 Positron emission tomography/computed tomography findings. The thick-walled cystic structure above the bladder could be seen, the radioactive uptake was significantly increased, and the maximum standard uptake value reached 6.5. The diagnosis was considered inflammatory or a neoplastic lesion on the sigmoid colon adherent to the bladder. A: Coronal whole-body imaging showing high uptake values at the lesion site; B: Detailed imaging pictures of the lesion, including horizontal, sagittal and coronal.

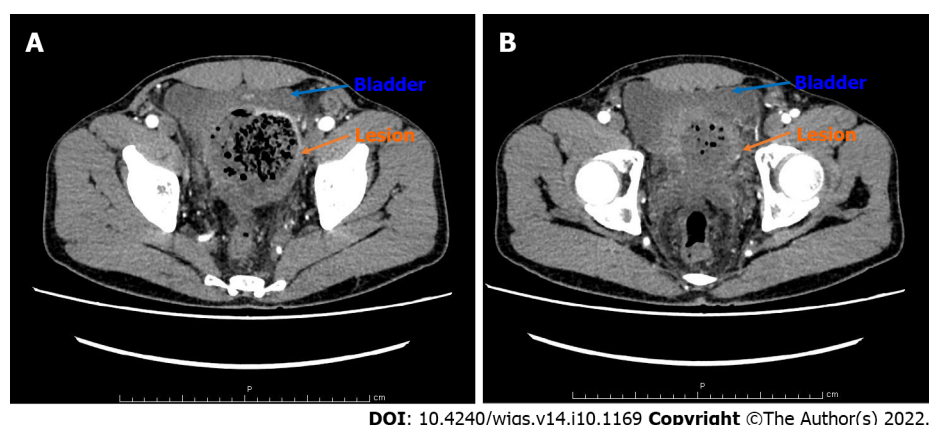


Figure 3 Contrast-enhanced computed tomography scan of the abdomen findings. A: The proximal sigmoid colon was dilated. The middle colon wall was thickened. It was markedly enhanced in the arterial phase, representing the characteristics of neoplastic lesions or chronic abscesses; B: The sigmoid colon mass compressed the bladder, and the boundary between the bladder and the mass was unclear.

exclusion criterion[3], we reported colonic involvement, which is a unique finding in our patient. Although the patient had a history of allergic rhinitis, the IgG4 level in the blood was increased, exceeding the critical value for IgG4-RD. In the histochemistry detection, we found the plasma cells and IgG4-positive cells infiltration, IgG4⁺/IgG⁺ ratio up to 60%, 110 IgG4⁺/HPF cells, obliterative phlebitis, and fibrous tissue in the lesion colon. According to the 2019 ACR/EULAR IgG4-RD Criteria[3], if case meets entry criteria and does not meet any exclusion criteria, proceed to step 3 evaluation, this patient could get a score of 42 (Dense lymphocytic infiltrate and storiform fibrosis with or without obliterative phlebitis, +13; Immunostaining, the IgG4⁺:IgG⁺ ratio is 41%–70% and IgG4⁺ cells/HPF is ≥ 10 , +14; Serum IgG4 concentration, > Normal but < 2 \times upper limit of normal, +4; Diffuse pancreas enlargement and capsule-like rim with decreased enhancement, +11). Therefore, this patient could be diagnosed as IgG4-RD is involved in the colon and pancreas.

When considering IgG4-RD, serum protein electrophoresis and IgG subclass tests should be used as initial investigations because approximately 70% of patients showed elevated serum IgG4 levels[7]. However, since IgG4 levels are not necessary for diagnosing IgG4-RD[8], serological testing, a simple, non-invasive method, can provide essential clues.

Steroids are the first-line treatment for IgG4-RD, and most patients respond well to glucocorticoid therapy[20]. In the 2019 ACR/EULAR IgG4-RD Criteria, failure to respond to glucocorticoids is a vital exclusion criterion for IgG4-RD, which illustrates their significance[3]. However, patients with incomplete remission and recurrence do exist[21]. Additionally, some patients' glucocorticoid-induced

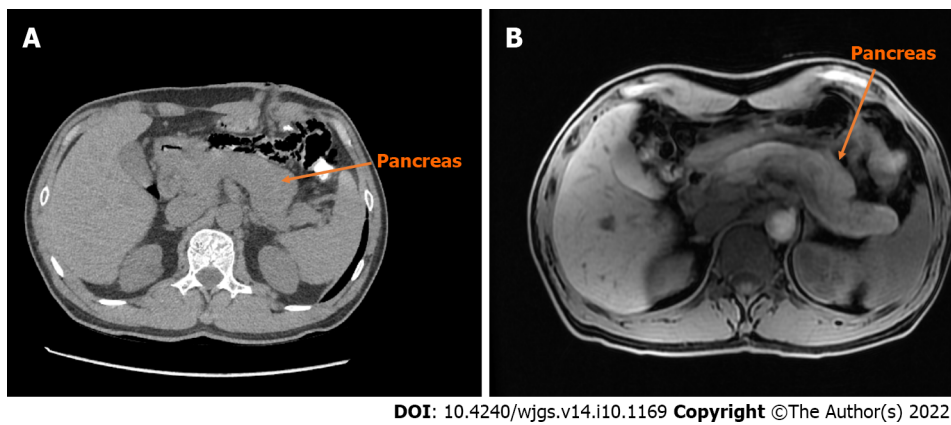


Figure 4 Computed tomography and magnetic resonance imaging scan of the pancreas. A: The pancreas of the patient is diffusely enlarged, surrounded by capsule-like edema in computed tomography (CT) image; B: Magnetic resonance imaging image of the patient's pancreas is similar to CT.

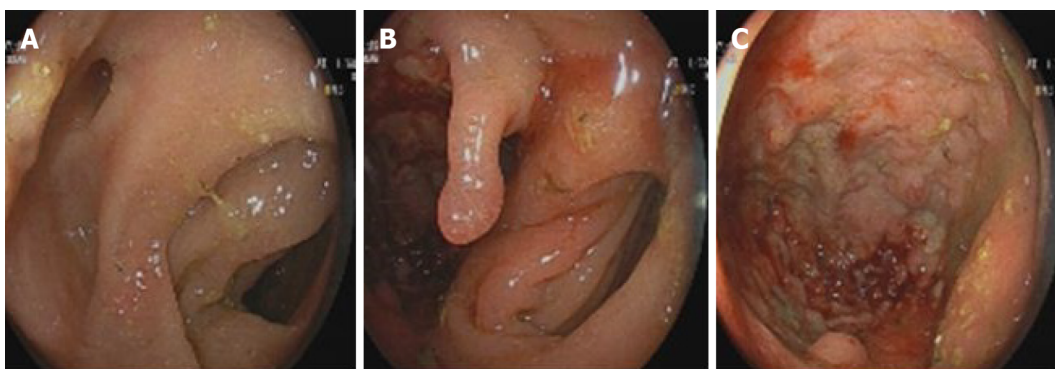


Figure 5 Findings of the colonoscopy. A and B: From different angles, it could be seen that there were two cavities in the sigmoid colon, one of which was a blind cavity; C: It could be seen that the diseased colon was thickened and rough, and the tissue was so hard to do a biopsy.

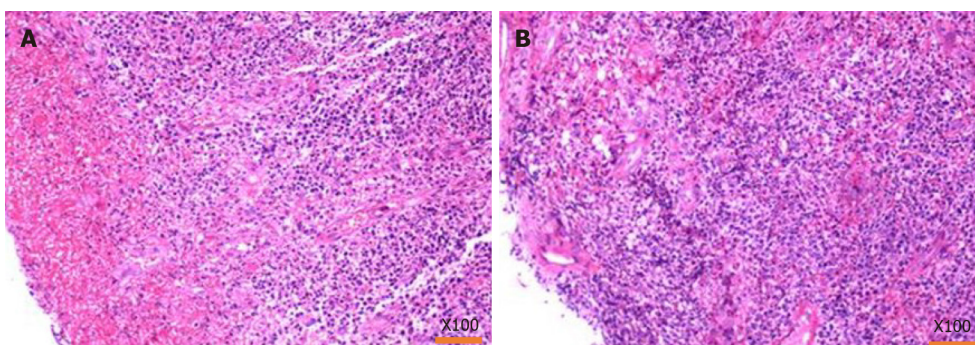
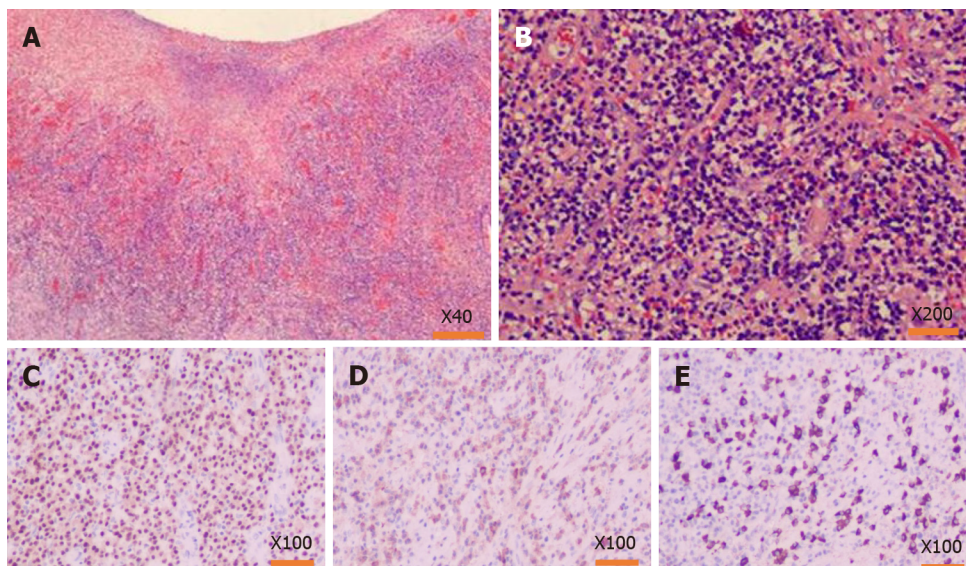


Figure 6 Pathology of the biopsy by colonoscopy. A: Hematoxylin-eosin staining showed that the tissues were inflammatory hyperplasia changes, and a large number of inflammatory cells were infiltrated; however, there were no tumor cells; B: Results from different sampling sites.

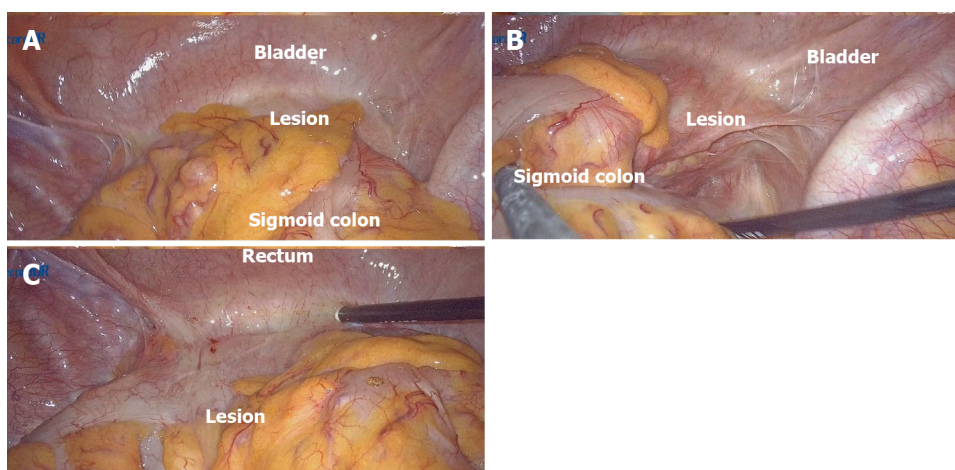
hyperglycemia coupled with secondary pancreatic fibrosis complicates the treatment due to these toxic effects[22].

Significantly, due to hypergammaglobulinemia and plasma cell amplification in IgG4-RD, the clinical efficacy of rituximab (which targets CD20 and depletes B cells) was also remarkable[23]. The use of immunosuppressive drugs such as cyclophosphamide, mycophenolate, leflunomide, and tacrolimus and their combination with glucocorticoids in IgG4-RD remains to be further studied[24-27]. Early identification of IgG4-RD and treatment with glucocorticoids, rituximab, or other immunosuppressive therapies are critical because patients usually respond well to these treatments in the early stages of the disease. Importantly, when chronic pancreatitis and fibrotic disease occur, they are often irreversible [28].



DOI: 10.4240/wjgs.v14.i10.1169 Copyright ©The Author(s) 2022.

Figure 7 Pathology findings after the operation. A and B: Hematoxylin-eosin staining of the lesion tissues, inflammatory cell infiltration with plasma cells and neutrophils and increased immunoglobulin G4 (IgG4) positive cells could be seen in the resection colonic mass, accompanied by tissue fibrosis and obliterative phlebitis; C: MMU1 staining showed a high expression state, suggesting a large number of plasma cells infiltration; D: Immunohistochemistry showed a lot of positive IgG staining in the lesion area; E: IgG4 also showed much positive staining in the lesion area, and the number of IgG4-positive cells in the main core area was as high as 110/HPF.



DOI: 10.4240/wjgs.v14.i10.1169 Copyright ©The Author(s) 2022.

Figure 8 Operation images from laparoscopy. A: Explore its relationship to surrounding tissue: Dense adhesion of the sigmoid colon to the bladder was observed during the laparoscopic surgery, and it was tough to separate the adhesion; the mass was on the sigmoid colon wall between the bladder and colon; B and C: View the location of the lesion from different angles.

CONCLUSION

In summary, this is a patient with colonic involvement with IgG4-RD. However, recognizing a disease is a gradual process, and the appearance of the disease in rare locations should not be ignored. Since the IgG4 levels in the resected tissue and serological tests were significantly increased, coupled with fibrosis and obliterative phlebitis in the resected colon, the diagnosis of IgG4-RD is reliable. Treatment of IgG4-RD with other immunosuppressive drugs should be further researched. This patient thus provided a rare aspect of IgG4-RD, which may help us further understand this disease.

FOOTNOTES

Author contributions: Zhan WL and Xu XS contributed to conceptualization, data curation, formal analysis, investigation, and methodology; Zhan WL, Liu L, and Jiang W contributed to visualization, roles/writing-original

draft, and writing-review & editing; Cao ZX and Xu XS contributed to conceptualization, project administration, supervision, and writing - review & editing; Qu HT and He FX contributed to investigation; methodology and validation.

Supported by Tongji Hospital Foundation, No. 2021HGRY012; and The Chen Xiao-Ping Foundation for the Development of Science and Technology of Hubei Province, No. CXPJH121003-2104.

Informed consent statement: Informed written consent was obtained from the patient and her family for publication of this report and any accompanying images.

Conflict-of-interest statement: All the authors report no relevant conflicts of interest for this article.

CARE Checklist (2016) statement: The authors have read the CARE Checklist (2016), and the manuscript was prepared and revised according to the CARE Checklist (2016).

Open-Access: This article is an open-access article that was selected by an in-house editor and fully peer-reviewed by external reviewers. It is distributed in accordance with the Creative Commons Attribution NonCommercial (CC BY-NC 4.0) license, which permits others to distribute, remix, adapt, build upon this work non-commercially, and license their derivative works on different terms, provided the original work is properly cited and the use is non-commercial. See: <https://creativecommons.org/licenses/by-nc/4.0/>

Country/Territory of origin: China

ORCID number: Wen-Li Zhan 0000-0002-5612-8391; Zhi-Xin Cao 0000-0001-9419-5539; Xiang-Shang Xu 0000-0003-3978-401X.

S-Editor: Liu GL

L-Editor: A

P-Editor: Liu GL

REFERENCES

- 1 **Deshpande V**, Zen Y, Chan JK, Yi EE, Sato Y, Yoshino T, Klöppel G, Heathcote JG, Khosroshahi A, Ferry JA, Aalberse RC, Bloch DB, Brugge WR, Bateman AC, Carruthers MN, Chari ST, Cheuk W, Cornell LD, Fernandez-Del Castillo C, Forcione DG, Hamilos DL, Kamisawa T, Kasashima S, Kawa S, Kawano M, Lauwers GY, Masaki Y, Nakanuma Y, Notohara K, Okazaki K, Ryu JK, Saeki T, Sahani DV, Smyrk TC, Stone JR, Takahira M, Webster GJ, Yamamoto M, Zamboni G, Umehara H, Stone JH. Consensus statement on the pathology of IgG4-related disease. *Mod Pathol* 2012; **25**: 1181-1192 [PMID: 22596100 DOI: 10.1038/modpathol.2012.72]
- 2 **Kamisawa T**, Funata N, Hayashi Y, Eishi Y, Koike M, Tsuruta K, Okamoto A, Egawa N, Nakajima H. A new clinicopathological entity of IgG4-related autoimmune disease. *J Gastroenterol* 2003; **38**: 982-984 [PMID: 14614606 DOI: 10.1007/s00535-003-1175-y]
- 3 **Wallace ZS**, Naden RP, Chari S, Choi HK, Della-Torre E, Dicaire JF, Hart PA, Inoue D, Kawano M, Khosroshahi A, Lanzillotta M, Okazaki K, Perugino CA, Sharma A, Saeki T, Schleinitz N, Takahashi N, Umehara H, Zen Y, Stone JH; Members of the ACR/EULAR IgG4-RD Classification Criteria Working Group. The 2019 American College of Rheumatology/European League Against Rheumatism classification criteria for IgG4-related disease. *Ann Rheum Dis* 2020; **79**: 77-87 [PMID: 31796497 DOI: 10.1136/annrheumdis-2019-216561]
- 4 **Sekiguchi H**, Horie R, Kanai M, Suzuki R, Yi ES, Ryu JH. IgG4-Related Disease: Retrospective Analysis of One Hundred Sixty-Six Patients. *Arthritis Rheumatol* 2016; **68**: 2290-2299 [PMID: 26990055 DOI: 10.1002/art.39686]
- 5 **Wallace ZS**, Deshpande V, Mattoo H, Mahajan VS, Kulikova M, Pillai S, Stone JH. IgG4-Related Disease: Clinical and Laboratory Features in One Hundred Twenty-Five Patients. *Arthritis Rheumatol* 2015; **67**: 2466-2475 [PMID: 25988916 DOI: 10.1002/art.39205]
- 6 **Mahajan VS**, Mattoo H, Deshpande V, Pillai SS, Stone JH. IgG4-related disease. *Annu Rev Pathol* 2014; **9**: 315-347 [PMID: 24111912 DOI: 10.1146/annurev-pathol-012513-104708]
- 7 **Cheuk W**, Chan JK. Lymphadenopathy of IgG4-related disease: an underdiagnosed and overdiagnosed entity. *Semin Diagn Pathol* 2012; **29**: 226-234 [PMID: 23068302 DOI: 10.1053/j.semdp.2012.07.001]
- 8 **Chang SY**, Keogh KA, Lewis JE, Ryu JH, Cornell LD, Garrity JA, Yi ES. IgG4-positive plasma cells in granulomatosis with polyangiitis (Wegener's): a clinicopathologic and immunohistochemical study on 43 granulomatosis with polyangiitis and 20 control cases. *Hum Pathol* 2013; **44**: 2432-2437 [PMID: 23993777 DOI: 10.1016/j.humpath.2013.05.023]
- 9 **Chen LYC**, Mattman A, Seidman MA, Carruthers MN. IgG4-related disease: what a hematologist needs to know. *Haematologica* 2019; **104**: 444-455 [PMID: 30705099 DOI: 10.3324/haematol.2018.205526]
- 10 **Chari ST**. Diagnosis of autoimmune pancreatitis using its five cardinal features: introducing the Mayo Clinic's HISORT criteria. *J Gastroenterol* 2007; **42** Suppl 18: 39-41 [PMID: 17520222 DOI: 10.1007/s00535-007-2046-8]
- 11 **Perugino CA**, Stone JH. IgG4-related disease: an update on pathophysiology and implications for clinical care. *Nat Rev Rheumatol* 2020; **16**: 702-714 [PMID: 32939060 DOI: 10.1038/s41584-020-0500-7]
- 12 **Perugino CA**, Wallace ZS, Meyersohn N, Oliveira G, Stone JR, Stone JH. Large vessel involvement by IgG4-related disease. *Medicine (Baltimore)* 2016; **95**: e3344 [PMID: 27428181 DOI: 10.1097/MD.0000000000003344]

- 13 **Ebbo M**, Grados A, Guedj E, Gobert D, Colavolpe C, Zaidan M, Masseau A, Bernard F, Berthelot JM, Morel N, Lifermann F, Palat S, Haroche J, Mariette X, Godeau B, Bernit E, Costedoat-Chalumeau N, Papo T, Hamidou M, Harlé JR, Schleinitz N. Usefulness of 2-[18F]-fluoro-2-deoxy-D-glucose-positron emission tomography/computed tomography for staging and evaluation of treatment response in IgG4-related disease: a retrospective multicenter study. *Arthritis Care Res (Hoboken)* 2014; **66**: 86-96 [PMID: [23836437](#) DOI: [10.1002/acr.22058](#)]
- 14 **Masamune A**, Kikuta K, Hamada S, Tsuji I, Takeyama Y, Shimosegawa T, Okazaki K; Collaborators. Nationwide epidemiological survey of autoimmune pancreatitis in Japan in 2016. *J Gastroenterol* 2020; **55**: 462-470 [PMID: [31872350](#) DOI: [10.1007/s00535-019-01658-7](#)]
- 15 **Kamisawa T**, Zen Y, Pillai S, Stone JH. IgG4-related disease. *Lancet* 2015; **385**: 1460-1471 [PMID: [25481618](#) DOI: [10.1016/S0140-6736\(14\)60720-0](#)]
- 16 **Ciccione F**, Ciccione A, Di Ruscio M, Vernia F, Cipolloni G, Coletti G, Calvisi G, Frieri G, Latella G. IgG4-Related Disease Mimicking Crohn's Disease: A Case Report and Review of Literature. *Dig Dis Sci* 2018; **63**: 1072-1086 [PMID: [29417330](#) DOI: [10.1007/s10620-018-4950-6](#)]
- 17 **Fujita K**, Naganuma M, Saito E, Suzuki S, Araki A, Negi M, Kawachi H, Watanabe M. Histologically confirmed IgG4-related small intestinal lesions diagnosed via double balloon enteroscopy. *Dig Dis Sci* 2012; **57**: 3303-3306 [PMID: [22695887](#) DOI: [10.1007/s10620-012-2267-4](#)]
- 18 **Notohara K**, Kamisawa T, Uchida K, Zen Y, Kawano M, Kasashima S, Sato Y, Shiokawa M, Uehara T, Yoshifuji H, Hayashi H, Inoue K, Iwasaki K, Kawano H, Matsubayashi H, Moritani Y, Murakawa K, Oka Y, Tateno M, Okazaki K, Chiba T. Gastrointestinal manifestation of immunoglobulin G4-related disease: clarification through a multicenter survey. *J Gastroenterol* 2018; **53**: 845-853 [PMID: [29222587](#) DOI: [10.1007/s00535-017-1420-4](#)]
- 19 **Abe A**, Manabe T, Takizawa N, Ueki T, Yamada D, Nagayoshi K, Sadakari Y, Fujita H, Nagai S, Yamamoto H, Oda Y, Nakamura M. IgG4-related sclerosing mesenteritis causing bowel obstruction: a case report. *Surg Case Rep* 2016; **2**: 120 [PMID: [27797069](#) DOI: [10.1186/s40792-016-0248-0](#)]
- 20 **Masaki Y**, Matsui S, Saeki T, Tsuboi H, Hirata S, Izumi Y, Miyashita T, Fujikawa K, Dobashi H, Susaki K, Morimoto H, Takagi K, Kawano M, Origuchi T, Wada Y, Takahashi N, Horikoshi M, Ogishima H, Suzuki Y, Kawanami T, Kawanami Iwao H, Sakai T, Fujita Y, Fukushima T, Saito M, Suzuki R, Morikawa Y, Yoshino T, Nakamura S, Kojima M, Kurose N, Sato Y, Tanaka Y, Sugai S, Sumida T. A multicenter phase II prospective clinical trial of glucocorticoid for patients with untreated IgG4-related disease. *Mod Rheumatol* 2017; **27**: 849-854 [PMID: [27846767](#) DOI: [10.1080/14397595.2016.1259602](#)]
- 21 **Inoue D**, Yoshida K, Yoneda N, Ozaki K, Matsubara T, Nagai K, Okumura K, Toshima F, Toyama J, Minami T, Matsui O, Gabata T, Zen Y. IgG4-related disease: dataset of 235 consecutive patients. *Medicine (Baltimore)* 2015; **94**: e680 [PMID: [25881845](#) DOI: [10.1097/MD.0000000000000680](#)]
- 22 **Omar D**, Chen Y, Cong Y, Dong L. Glucocorticoids and steroid sparing medications monotherapies or in combination for IgG4-RD: a systematic review and network meta-analysis. *Rheumatology (Oxford)* 2020; **59**: 718-726 [PMID: [31511884](#) DOI: [10.1093/rheumatology/kez380](#)]
- 23 **Khosroshahi A**, Bloch DB, Deshpande V, Stone JH. Rituximab therapy leads to rapid decline of serum IgG4 levels and prompt clinical improvement in IgG4-related systemic disease. *Arthritis Rheum* 2010; **62**: 1755-1762 [PMID: [20191576](#) DOI: [10.1002/art.27435](#)]
- 24 **Buechter M**, Klein CG, Kloeters C, Schlaak JF, Canbay A, Gerken G, Kahraman A. Tacrolimus as a reasonable alternative in a patient with steroid-dependent and thiopurine-refractory autoimmune pancreatitis with IgG4-associated cholangitis. *Z Gastroenterol* 2014; **52**: 564-568 [PMID: [24905108](#) DOI: [10.1055/s-0034-1366331](#)]
- 25 **Wang Y**, Li K, Gao D, Luo G, Zhao Y, Wang X, Zhang J, Jin J, Zhao Z, Yang C, Zhu J, Huang F. Combination therapy of leflunomide and glucocorticoids for the maintenance of remission in patients with IgG4-related disease: a retrospective study and literature review. *Intern Med J* 2017; **47**: 680-689 [PMID: [28321964](#) DOI: [10.1111/imj.13430](#)]
- 26 **Yunyun F**, Yu C, Panpan Z, Hua C, Di W, Lidan Z, Linyi P, Li W, Qingjun W, Xuan Z, Yan Z, Xiaofeng Z, Fengchun Z, Wen Z. Efficacy of Cyclophosphamide treatment for immunoglobulin G4-related disease with addition of glucocorticoids. *Sci Rep* 2017; **7**: 6195 [PMID: [28733656](#) DOI: [10.1038/s41598-017-06520-5](#)]
- 27 **Yunyun F**, Yu P, Panpan Z, Xia Z, Linyi P, Jiaxin Z, Li Z, Shangzhu Z, Jinjing L, Di W, Yamin L, Xiaowei L, Huadan X, Xuan Z, Xiaofeng Z, Fengchun Z, Yan Z, Wen Z. Efficacy and safety of low dose Mycophenolate mofetil treatment for immunoglobulin G4-related disease: a randomized clinical trial. *Rheumatology (Oxford)* 2019; **58**: 52-60 [PMID: [30124952](#) DOI: [10.1093/rheumatology/key227](#)]
- 28 **El Euch M**, Hddad S, Mahfoudhi M, Maktouf H, Ben Hamida F, Jaziri F, Ben Abdelghani K, Turki S, Ben Abdallah T. A Case of Type 1 Autoimmune Pancreatitis (AIP), a Form of IgG4-Related Disease (IgG4-RD). *Am J Case Rep* 2017; **18**: 822-825 [PMID: [28736430](#) DOI: [10.12659/ajcr.904263](#)]



Published by **Baishideng Publishing Group Inc**
7041 Koll Center Parkway, Suite 160, Pleasanton, CA 94566, USA

Telephone: +1-925-3991568

E-mail: bpgoffice@wjgnet.com

Help Desk: <https://www.f6publishing.com/helpdesk>

<https://www.wjgnet.com>

