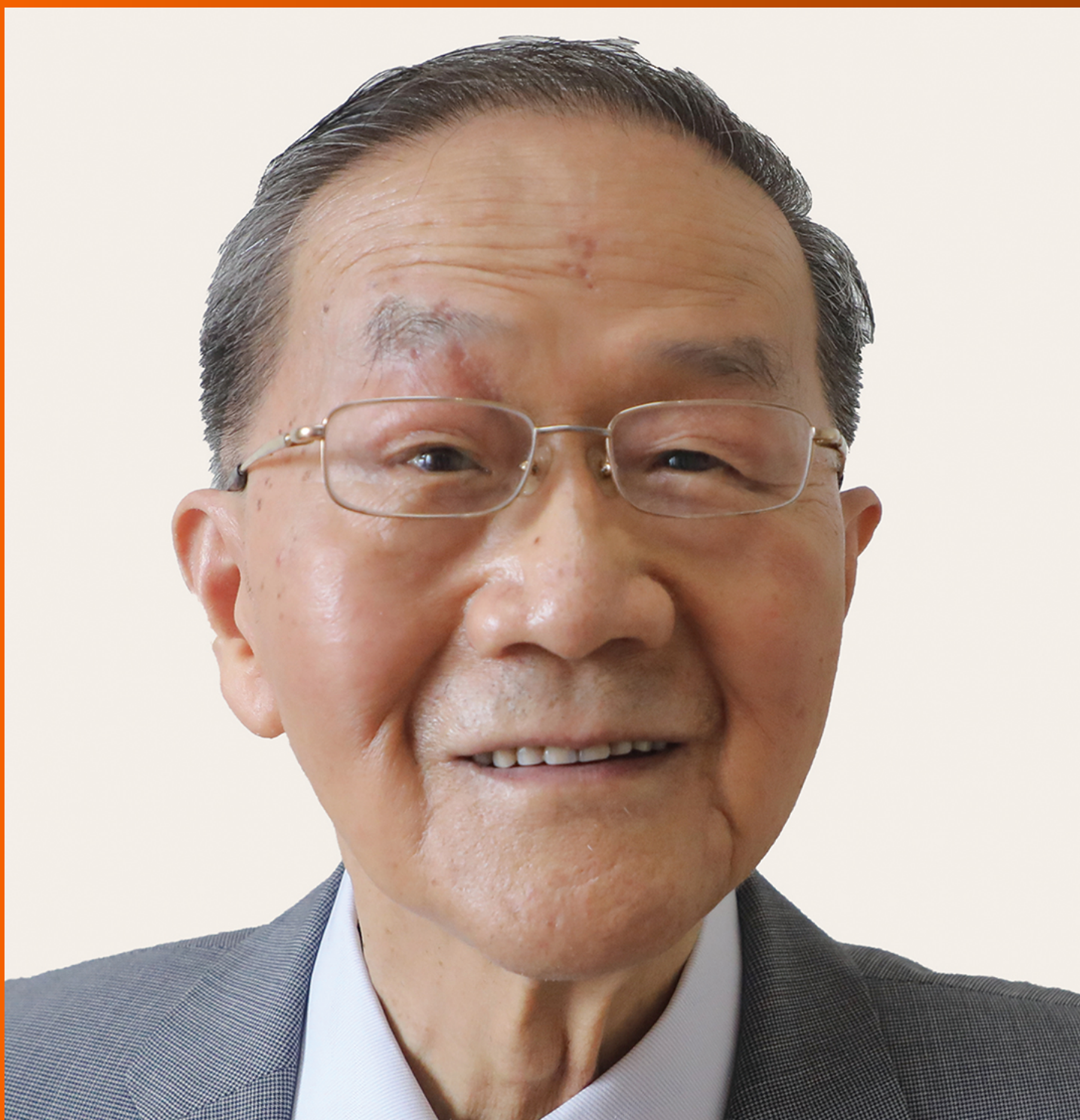


World Journal of *Gastrointestinal Surgery*

World J Gastrointest Surg 2022 September 27; 14(9): 877-1088



MINIREVIEWS

- 877** Oncologic aspects of the decision-making process for surgical approach for colorectal liver metastases progressing during chemotherapy
Araujo RLC, Carvalho CGCY, Maeda CT, Milani JM, Bugano DG, de Moraes PHZ, Linhares MM
- 887** Research progress on the immune microenvironment of the gallbladder in patients with cholesterol gallstones
Jiao JY, Zhu XJ, Zhou C, Wang P

ORIGINAL ARTICLE

Retrospective Study

- 896** Central pancreatectomy for benign or low-grade malignant pancreatic tumors in the neck and body of the pancreas
Chen YW, Xu J, Li X, Chen W, Gao SL, Shen Y, Zhang M, Wu J, Que RS, Yu J, Liang TB, Bai XL
- 904** Irinotecan- vs oxaliplatin-based regimens for neoadjuvant chemotherapy in colorectal liver metastasis patients: A retrospective study
Liu W, Chen FL, Wang K, Bao Q, Wang HW, Jin KM, Xing BC
- 918** Predictors of difficult endoscopic resection of submucosal tumors originating from the muscularis propria layer at the esophagogastric junction
Wang YP, Xu H, Shen JX, Liu WM, Chu Y, Duan BS, Lian JJ, Zhang HB, Zhang L, Xu MD, Cao J
- 930** Liver transplantation with simultaneous splenectomy increases risk of cancer development and mortality in hepatocellular carcinoma patients
Fan HL, Hsieh CB, Kuo SM, Chen TW
- 940** Development of an innovative nomogram of risk factors to predict postoperative recurrence of gastrointestinal stromal tumors
Guan SH, Wang Q, Ma XM, Qiao WJ, Li MZ, Lai MG, Wang C
- 950** Comparison of short-term efficacy between totally laparoscopic gastrectomy and laparoscopic assisted gastrectomy for elderly patients with gastric cancer
Zhao RY, Li HH, Zhang KC, Cui H, Deng H, Gao JW, Wei B
- 963** Personal predictive model based on systemic inflammation markers for estimation of postoperative pancreatic fistula following pancreaticoduodenectomy
Long ZD, Lu C, Xia XG, Chen B, Xing ZX, Bie L, Zhou P, Ma ZL, Wang R
- 976** Feasible management of median arcuate ligament syndrome in orthotopic liver transplantation recipients
Li SX, Fan YH, Tian GY, Lv GY

- 986** Study of preoperative diagnostic modalities in Chinese patients with superficial esophageal squamous cell carcinoma

Zeng YT, Sun YY, Tan WC, Luo SA, Zou BH, Luo GY, Huang CY

Observational Study

- 997** Oesophageal cancer metastases: An observational study of a more aggressive approach

Pickett L, Dunne M, Monaghan O, Grogan L, Breathnach O, Walsh TN

- 1008** Change of tumor-infiltrating lymphocyte of associating liver partition and portal vein ligation for staged hepatectomy for hepatocellular carcinoma

Wang W, Deng ZF, Wang JL, Zhang L, Bao L, Xu BH, Zhu H, Guo Y, Wen Z

- 1026** Blood index panel for gastric cancer detection

Guo GH, Xie YB, Zhang PJ, Jiang T

Randomized Controlled Trial

- 1037** Effect of cardiac output - guided hemodynamic management on acute lung injury in pediatric living donor liver transplantation

Dou XJ, Wang QP, Liu WH, Weng YQ, Sun Y, Yu WL

SYSTEMATIC REVIEWS

- 1049** Minimally invasive endoscopic repair of rectovaginal fistula

Zeng YX, He YH, Jiang Y, Jia F, Zhao ZT, Wang XF

META-ANALYSIS

- 1060** Laparoscopic appendectomy, stump closure and endoloops: A meta-analysis

Zorzetti N, Lauro A, Bellini MI, Vaccari S, Dalla Via B, Cervellera M, Cirocchi R, Sorrenti S, D'Andrea V, Tonini V

CASE REPORT

- 1072** Retrorectal mucinous adenocarcinoma arising from a tailgut cyst: A case report and review of literature

Wang YS, Guo QY, Zheng FH, Huang ZW, Yan JL, Fan FX, Liu T, Ji SX, Zhao XF, Zheng YX

LETTER TO THE EDITOR

- 1082** Successful treatment of acute symptomatic extensive portal venous system thrombosis by 7-day systemic thrombolysis

Gao FB, Wang L, Zhang WX, Shao XD, Guo XZ, Qi XS

- 1086** Prediction factors for ischemia of closed-loop small intestinal obstruction

Pavlidis ET, Pavlidis TE

ABOUT COVER

Editorial Board Member of *World Journal of Gastrointestinal Surgery*, Shu-You Peng, FACS, FRCP (Hon), MD, Full Professor, Department of Surgery, Medical School of Zhejiang University, Hangzhou 310009, Zhejiang Province, China. zrwkpsy@zju.edu.cn

AIMS AND SCOPE

The primary aim of *World Journal of Gastrointestinal Surgery* (WJGS, *World J Gastrointest Surg*) is to provide scholars and readers from various fields of gastrointestinal surgery with a platform to publish high-quality basic and clinical research articles and communicate their research findings online.

WJGS mainly publishes articles reporting research results and findings obtained in the field of gastrointestinal surgery and covering a wide range of topics including biliary tract surgical procedures, biliopancreatic diversion, colectomy, esophagectomy, esophagostomy, pancreas transplantation, and pancreatectomy, etc.

INDEXING/ABSTRACTING

The WJGS is now abstracted and indexed in Science Citation Index Expanded (SCIE, also known as SciSearch®), Current Contents/Clinical Medicine, Journal Citation Reports/Science Edition, PubMed, PubMed Central, Reference Citation Analysis, China National Knowledge Infrastructure, China Science and Technology Journal Database, and Superstar Journals Database. The 2022 Edition of Journal Citation Reports® cites the 2021 impact factor (IF) for WJGS as 2.505; IF without journal self cites: 2.473; 5-year IF: 3.099; Journal Citation Indicator: 0.49; Ranking: 104 among 211 journals in surgery; Quartile category: Q2; Ranking: 81 among 93 journals in gastroenterology and hepatology; and Quartile category: Q4.

RESPONSIBLE EDITORS FOR THIS ISSUE

Production Editor: Rui-Rui Wu, Production Department Director: Xiang Li, Editorial Office Director: Jia-Ru Fan.

NAME OF JOURNAL

World Journal of Gastrointestinal Surgery

ISSN

ISSN 1948-9366 (online)

LAUNCH DATE

November 30, 2009

FREQUENCY

Monthly

EDITORS-IN-CHIEF

Peter Schemmer

EDITORIAL BOARD MEMBERS

<https://www.wjgnet.com/1948-9366/editorialboard.htm>

PUBLICATION DATE

September 27, 2022

COPYRIGHT

© 2022 Baishideng Publishing Group Inc

INSTRUCTIONS TO AUTHORS

<https://www.wjgnet.com/bpg/gerinfo/204>

GUIDELINES FOR ETHICS DOCUMENTS

<https://www.wjgnet.com/bpg/GerInfo/287>

GUIDELINES FOR NON-NATIVE SPEAKERS OF ENGLISH

<https://www.wjgnet.com/bpg/gerinfo/240>

PUBLICATION ETHICS

<https://www.wjgnet.com/bpg/GerInfo/288>

PUBLICATION MISCONDUCT

<https://www.wjgnet.com/bpg/gerinfo/208>

ARTICLE PROCESSING CHARGE

<https://www.wjgnet.com/bpg/gerinfo/242>

STEPS FOR SUBMITTING MANUSCRIPTS

<https://www.wjgnet.com/bpg/GerInfo/239>

ONLINE SUBMISSION

<https://www.f6publishing.com>



Retrospective Study

Development of an innovative nomogram of risk factors to predict postoperative recurrence of gastrointestinal stromal tumors

Shi-Hao Guan, Qiong Wang, Xiao-Ming Ma, Wen-Jie Qiao, Ming-Zheng Li, Ming-Gui Lai, Cheng Wang

Specialty type: Gastroenterology and hepatology

Provenance and peer review:

Unsolicited article; Externally peer reviewed.

Peer-review model: Single blind

Peer-review report's scientific quality classification

Grade A (Excellent): 0
Grade B (Very good): B
Grade C (Good): C, C
Grade D (Fair): 0
Grade E (Poor): 0

P-Reviewer: Chetty R, United Kingdom; Fusaroli P, Italy

Received: April 14, 2022

Peer-review started: April 14, 2022

First decision: June 10, 2022

Revised: July 2, 2022

Accepted: August 7, 2022

Article in press: August 7, 2022

Published online: September 27, 2022



Shi-Hao Guan, Department of General Surgery, Qingpu Branch of Zhongshan Hospital Affiliated to Fudan University, Shanghai 201700, China

Shi-Hao Guan, Medical College, Qinghai University, Xining 810001, Qinghai Province, China

Qiong Wang, Department of Medical Oncology, The Affiliated Hospital of Qinghai University, Xining 810001, Qinghai Province, China

Xiao-Ming Ma, Wen-Jie Qiao, Ming-Zheng Li, Ming-Gui Lai, Cheng Wang, Department of Gastrointestinal Tumor Surgery, The Affiliated Hospital of Qinghai University, Xining 810001, Qinghai Province, China

Corresponding author: Cheng Wang, MM, Chief Doctor, Professor, Department of Gastrointestinal Tumor Surgery, The Affiliated Hospital of Qinghai University, No. 29 Tongren Road, Xining 810001, Qinghai Province, China. cheng_wang_vip@163.com

Abstract

BACKGROUND

There are many staging systems for gastrointestinal stromal tumors (GISTs), and the risk indicators selected are also different; thus, it is not possible to quantify the risk of recurrence among individual patients.

AIM

To develop and internally validate a model to identify the risk factors for GIST recurrence after surgery.

METHODS

The least absolute shrinkage and selection operator (LASSO) regression model was performed to identify the optimum clinical features for the GIST recurrence risk model. Multivariable logistic regression analysis was used to develop a prediction model that incorporated the possible factors selected by the LASSO regression model. The index of concordance (C-index), calibration curve, receiver operating characteristic curve (ROC), and decision curve analysis were used to assess the discrimination, calibration, and clinical usefulness of the predictive model. Internal validation of the clinical predictive capability was also evaluated by bootstrapping validation.

RESULTS

The nomogram included tumor site, lesion size, mitotic rate/50 high power fields, Ki-67 index, intracranial necrosis, and age as predictors. The model presented perfect discrimination with a reliable C-index of 0.836 (95%CI: 0.712-0.960), and a high C-index value of 0.714 was also confirmed by interval validation. The area under the curve value of this prediction nomogram was 0.704, and the ROC result indicated good predictive value. Decision curve analysis showed that the predicting recurrence nomogram was clinically feasible when the recurrence rate exceeded 5% after surgery.

CONCLUSION

This recurrence nomogram combines tumor site, lesion size, mitotic rate, Ki-67 index, intracranial necrosis, and age and can easily predict patient prognosis.

Key Words: Gastrointestinal stromal tumors; Recurrence; Clinicopathological; Predictors; Nomogram

©The Author(s) 2022. Published by Baishideng Publishing Group Inc. All rights reserved.

Core Tip: This is a retrospective study to explore the risk factors for gastrointestinal stromal tumors recurrence after surgery. The nomogram included tumor site, lesion size, mitotic rate/50 high power fields, Ki-67 index, intracranial necrosis, and age as predictors. The model presented perfect discrimination with a reliable index of concordance (C-index) of 0.836 (95%CI: 0.712-0.960), and a high C-index value of 0.714 was also confirmed by interval validation. The area under the curve value of this prediction nomogram was 0.704, indicating good predictive value. Decision curve analysis showed that the predicting recurrence nomogram was clinically feasible.

Citation: Guan SH, Wang Q, Ma XM, Qiao WJ, Li MZ, Lai MG, Wang C. Development of an innovative nomogram of risk factors to predict postoperative recurrence of gastrointestinal stromal tumors. *World J Gastrointest Surg* 2022; 14(9): 940-949

URL: <https://www.wjgnet.com/1948-9366/full/v14/i9/940.htm>

DOI: <https://dx.doi.org/10.4240/wjgs.v14.i9.940>

INTRODUCTION

Gastrointestinal stromal tumors (GISTs) originate from gastrointestinal Cajal cells and are the most common mesenchymal tumors in the gastrointestinal tract, accounting for 1% to 3% of gastrointestinal malignancies[1]. GISTs can occur anywhere in the digestive tract, most commonly in the stomach (50%-60%) and the small intestine (30%-50%)[2]. Surgical resection is the main treatment for GIST. However, even with complete surgical resection, approximately 40% to 50% of patients with high-risk GISTs will have recurrence and metastasis[3]. Therefore, by accurately determining the risk factors for postoperative recurrence, effective preventive measures could be performed, and the prognosis of patients with GIST could be improved.

Clinical characteristics including tumor site, tumor size, and mitotic rate are the most common indicators for analyzing the risk factors for recurrence after surgery for GIST. Some studies also suggest that the systemic inflammatory response plays an important role in the progression and metastasis of tumors[4]. The grade of risk classification after operation for GIST is mainly evaluated by the 2008 modified National Institutes of Health (NIH) risk grading standards[5], the 2020 edition of the World Health Organization soft tissue tumor classification[6], the National Comprehensive Cancer Network guidelines (6th edition, 2019)[7] and the Armed Forces Institute of Pathology criteria[8]. In addition, Joensuu *et al*[9] developed a new contour map to predict the prognosis of patients with GIST by monitoring the follow-up results of more than 2000 patients with GIST. However, the use of a single grading method to predict the probability of postoperative recurrence in patients with GIST has certain limitations, especially for some GIST patients who only evaluate the two key indicators of tumor size and mitotic rate. Therefore, there is currently no consensus on which risk grading system to use. Nomograms have been developed for most malignant tumors[10,11]. The use of nomograms has been compared to many traditional cancer staging systems, and it is proposed as an alternative or even a new standard.

Based on the above factors, a predictive nomogram may provide a more accurate prognostic assessment and basis for postoperative recurrence of GIST. To our knowledge, reports on the establishment of a nomogram for the postoperative recurrence of GIST are rare. Therefore, the aim of this study was to develop an effective and simple predictive tool for the risk assessment of postoperative recurrence after GIST and to evaluate the risk of postoperative recurrence using only

postoperative pathological features and general clinical data.

MATERIALS AND METHODS

Patients

The clinical and pathological data of 130 patients with GIST from January 2010 to January 2017 were retrospectively analyzed. The inclusion criteria were as follows: first, complete surgical resection and postoperative pathology and immunohistochemistry confirmed as GIST; second, complete medical records were available; third, patients presented with no other gastrointestinal malignancies; and fourth, patients reported no history of neoadjuvant targeted therapy. A total of 130 patients were included in the study according to the inclusion criteria. The classification criteria were as follows: the risk of recurrence of primary GIST was divided into 4 groups according to the 2008 NIH risk grading standards [5]: very low risk, low risk, middle risk, and high risk. Tumor size was based on the largest diameter of the lesion. The Ki-67 indicator was divided into two groups: $< 5\%$ and $\geq 5\%$. The mitotic rate/50 high power fields were divided into three groups: ≤ 5 , > 5 and ≤ 10 , and > 10 . The tumors were divided into two groups according to whether there was bleeding or necrosis.

Postoperative survival and follow-up

All cases were followed up mainly by telephone and outpatient and inpatient review after surgery. Recurrence was confirmed by imaging examination (abdominal B-ultrasound, computed tomography or magnetic resonance imaging) and pathological confirmation by biopsy. The last follow-up time was until June 2019, and the endpoint event was recurrence or metastasis of the patient. Recurrence-free survival was defined as the time from the date of surgery to the time of recurrence or metastasis or the last follow-up time.

Statistical analysis

Data processing was performed using R language (version 3.6.0) statistical software. The best predictive risk factors for recurrence were selected from the clinical pathological data of patients with GIST using the least absolute shrinkage and selection operator (LASSO) method suitable for reducing high-dimensional data [12,13]. The process was as follows: select the factor with a nonzero coefficient in the LASSO regression model [14], combine the factors selected in the LASSO regression model, and use multivariate logistic regression analysis to establish the prediction model and obtain the odds ratio value of the corresponding factor, 95%CI and *P* value. Statistical significance levels were relative, variables with a *P* value of < 0.05 were included in the model, and variables associated with disease and treatment factors were also included. All potential predictors have been used to develop predictive models for the risk of GIST recurrence.

Calibration curves were drawn to evaluate the accuracy of the recurrence nomogram. The recognition performance of the recurrence nomogram was quantified by measuring Harrell's index of concordance (C-index). Bootstrap verification (1000 bootstrap resampling) was performed on the recurrence nomogram to determine the relative corrected C-index [15]. Decision curve analysis was performed to quantify the clinical values of the recurrence nomogram by quantifying the net benefit at different threshold probabilities in the GIST cohort [16]. The proportion of all false-positive patients was subtracted from the proportion of true positive patients, and the net benefit was calculated by weighing the relative harm of the intervention with the negative consequences of unnecessary interventions [17].

RESULTS

Patient characteristics

In this study, 130 patients with GIST radical surgery were included, including 101 gastric stromal tumors, 24 small intestinal stromal tumors, and 5 Large intestinal stromal tumors. All patients were divided into a recurrence group (13 cases) and a nonrecurrence group (117 cases) according to the presence or absence of recurrence. The ratio of males to females was close to 1:1. The patients were aged 25-82 years old, and the mean age was 57.0 ± 11.8 years old. All data and proportions of the two groups of patients, including general information and clinicopathological features are shown in Table 1.

Factor selection

Of the 130 patients' general information and clinical pathological features, 9 factors were calculated using the LASSO regression model, and 5 factors with nonzero coefficients were considered potential predictors. These factors included the mitotic rate, Ki-67, intratumoral necrosis, tumor size and tumor site (Figure 1A and B).

Table 1 Differences between the demographic and clinical characteristics of the recurrence and nonrecurrence groups

Demographic characteristics	n (%)		
	Recurrence (n = 13)	Nonrecurrence (n = 117)	Total (n = 130)
Age (yr)			
< 60	8 (61.5)	62 (54.0)	70 (53.8)
≥ 60	5 (38.5)	55 (47.0)	60 (46.2)
Sex			
Male	6 (46.2)	61 (52.1)	67 (51.5)
Female	7 (53.8)	56 (47.9)	63 (48.5)
Tumor site			
Stomach	9 (69.2)	92 (78.6)	101 (77.7)
Small intestine	1 (7.7)	23 (19.7)	24 (18.5)
Large intestine	3 (23.1)	2 (1.7)	5 (3.8)
Tumor size			
< 2 cm	2 (15.4)	25 (21.4)	27 (20.8)
≥ 2 and ≤ 5 cm	6 (46.1)	56 (47.9)	62 (47.7)
> 5 and ≤ 10 cm	1 (7.7)	30 (25.6)	31 (23.8)
> 10 cm	4 (30.8)	6 (5.1)	10 (7.7)
NIH risk category			
Very low	3 (23.1)	31 (26.5)	34 (26.2)
Low	2 (15.4)	31 (26.5)	33 (25.4)
Middle	1 (7.7)	27 (23.1)	28 (21.5)
High	7 (53.8)	28 (23.9)	35 (26.9)
Mitotic rate			
≤ 5 cm	7 (53.8)	87 (74.4)	94 (72.3)
> 5 cm and ≤ 10 cm	2 (15.4)	22 (18.8)	24 (18.5)
> 10 cm	4 (30.8)	8 (6.8)	12 (9.2)
Ki-67			
< 5%	4 (30.8)	70 (59.8)	74 (56.9)
≥ 5%	9 (69.2)	47 (40.2)	56 (43.1)
Intratumoral hemorrhage			
Yes	10 (76.9)	100 (85.5)	110 (84.6)
No	3 (23.1)	17 (14.5)	20 (15.4)
Intratumoral necrosis			
Yes	8 (61.5)	99 (84.6)	107 (82.3)
No	5 (38.5)	18 (15.4)	23 (17.7)

NIH: National Institutes of Health.

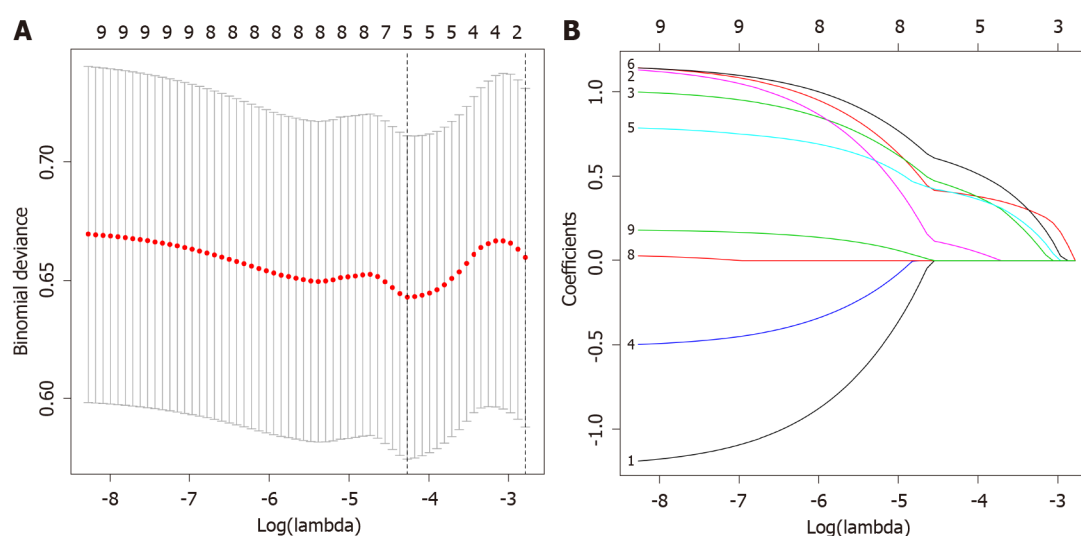
Development of an individualized prediction model

Multivariate logistic regression analysis was performed on factors with nonzero coefficients in the LASSO regression model. In addition, considering the importance of age in oncology, an additional age factor was added to this analysis is shown in Table 2. Therefore, a total of 6 potential predictors were mitotic rate, Ki 67, intratumoral necrosis, tumor size, tumor site and age. The potential predictive factors are integrated together, and scaled line segments are drawn on the same plane to a certain scale to express the relationship between variables in the predictive model, represented by a nomogram

Table 2 Prediction factors for recurrence of gastrointestinal stromal tumor

Intercept and variable	Prediction model		
	β	Odds ratio (95%CI)	P value
Intercept	-3.0092	0.049 (0.006-0.245)	0.001
Mitotic rate	3.2152	24.907 (2.215-707.556)	0.020
Ki-67	0.7514	2.120 (0.340-15.083)	0.425
Intratumoral necrosis	-0.2675	0.765 (0.081-5.421)	0.799
Tumor size	-0.0147	0.985 (0.115-10.405)	0.989
Tumor site	3.4115	30.313 (3.265-405.088)	0.003
Age	0.1048	1.110 (0.228-5.611)	0.895

β : The regression coefficient.



DOI: 10.4240/wjgs.v14.i9.940 Copyright ©The Author(s) 2022.

Figure 1 Clinicopathologic characteristics selection using the least absolute shrinkage and selection operator regression model. A: Optimal parameter (λ) selection in the least absolute shrinkage and selection operator (LASSO) regression model used five-fold cross-validation via minimum criteria. The partial likelihood deviance (binomial deviance) curve was plotted versus $\log(\lambda)$. Dotted vertical lines were drawn at the optimal values using the minimum criteria and the 1 Standard Error of the minimum criteria; B: LASSO coefficient profiles of the 9 features. A coefficient profile plot was produced against the $\log(\lambda)$ sequence. A vertical line was drawn at the value selected using five-fold cross-validation, where optimal λ resulted in five features with nonzero coefficients.

(Figure 2).

Apparent performance of the recurrence risk nomogram in the cohort

The calibration curve of the recurrence risk nomogram used to predict recurrence risk in patients with GIST showed good consistency (Figure 3). The C-index of the predictive nomogram of this cohort was 0.836 (95%CI: 0.712-0.960), and it was confirmed as 0.714 by bootstrapping validation, which indicated that this model had great differentiation. In the recurrence risk nomogram, the apparent performance possessed a good prediction capability.

Clinical use

The decision curve analysis for the GIST recurrence risk nomogram showed that if the threshold probability of a patient and a doctor is > 5 and $< 100\%$, respectively, using this recurrence nomogram to predict recurrence risk adds more benefit than the scheme (Figure 4). As the threshold probability increases, the predictive power will not increase. In this range, according to the risk of recurrence nomogram, the net benefit is comparable to several overlaps.

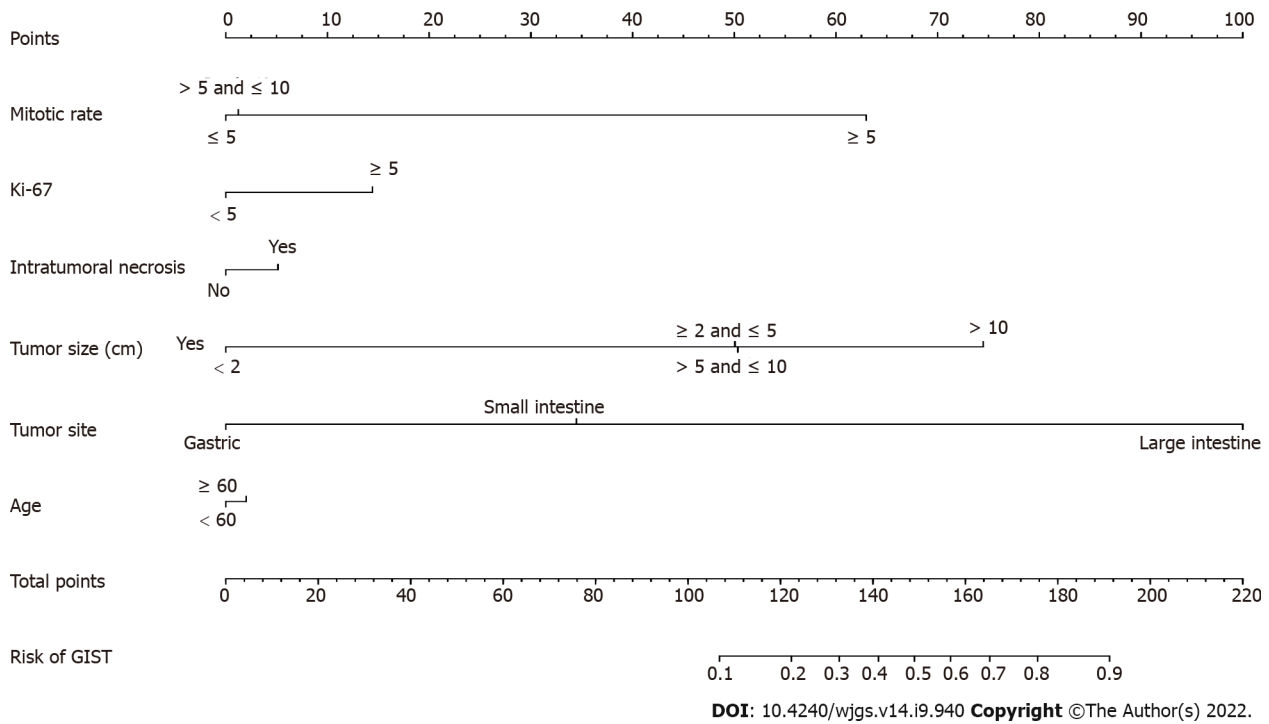


Figure 2 Developed recurrence nomogram. The recurrence nomogram includes mitotic rate, Ki-67, intratumoral necrosis, tumor size, tumor site and age. GIST: Gastrointestinal stromal tumors.

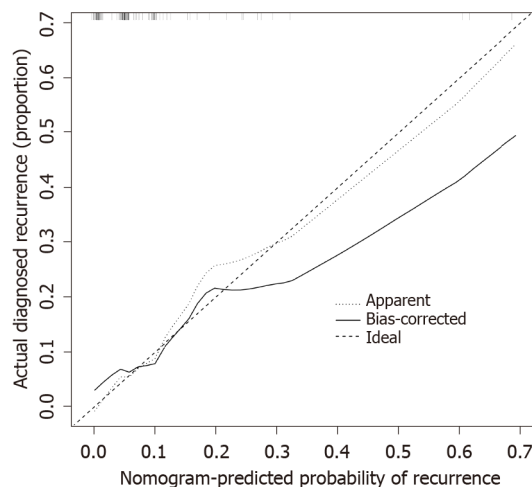
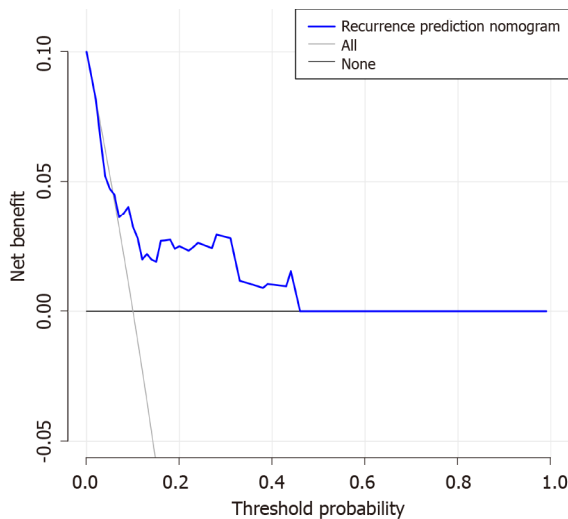


Figure 3 Calibration curves of the recurrence nomogram prediction. The x-axis represents a possible risk of recurrence of gastrointestinal stromal tumor. The y-axis represents the actual recurrence. Diagonal dotted lines indicate predictions under ideal conditions. The solid line indicates the performance of the nomogram, and the closer it is to the diagonal dotted line, the more predictive the value is.

DISCUSSION

The global incidence of GIST is approximately 11.0-14.5/1 million[18]. Although it is rare compared with other tumors in the digestive tract, China has a large population base, so a considerable number of patients are diagnosed with GISTs every year. In clinical work, an increasing number of patients with GIST have been diagnosed and treated, and the number should not be underestimated. Although the use of small molecule targeted drugs such as imatinib has significantly improved the prognosis of patients with moderate and high-risk GISTs, there is still tumor recurrence or metastasis during or after adjuvant therapy[19]. Therefore, accurate assessment of the factors affecting the recurrence of GIST in patients is essential for guiding the individualized treatment of patients.

Four staging systems are commonly used for GIST. At present, the classification of different staging systems is mainly based on the following three influencing factors: the size of the tumor, the mitotic rate, and the location of the tumor. However, none of these systems were specifically developed for



DOI: 10.4240/wjgs.v14.i9.940 Copyright ©The Author(s) 2022.

Figure 4 Decision curve analysis of the recurrence nomogram. The y-axis represents the net benefit. The blue line represents the gastrointestinal stromal tumor (GIST) recurrence risk nomogram. The solid line indicates the hypothesis that all patients have recurrence. The thick solid line indicates the assumption that there is no patient recurrence. The decision curve shows that if the threshold probability is > 5% and < 100%, the recurrence nomogram in the current study can be used to predict the risk of recurrence of GIST and adds more benefit than the intervention-all-patients regimen or the intervention-none regimen.

postoperative prognosis predictions. Similarly, it is not possible to quantify the risk of recurrence among individual patients. Currently, nomograms are widely used in prognostic studies in oncology and medicine. To predict the prognosis of certain cancers, some researchers have developed more accurate scales than conventional staging systems[20,21]. Therefore, the aim of the study was to establish a recurrence risk nomogram for patients with GIST to achieve higher accuracy and predictions that are easier to understand to help better clinical decision-making and maximize patient benefit.

We developed and validated a new predictive tool that uses six easily available variables to predict recurrence risk after radical surgery in patients with GIST. Incorporating general information and risk factors for clinicopathological features into an easy-to-use nomogram can help individualize the prediction of the recurrence of GIST. Nomograms are based on statistical models that use a combination of prognostic variables to determine the likelihood of a particular event and perform well in predicting postoperative recurrence. The predictions are supported by a C-index of 0.836 (95%CI: 0.712-0.960) and a calibration curve. The C-index, an internal verification method, in this study cohort was 0.714, showing good discrimination and calibration ability. Our high C-index in all cohort verifications indicates that this nomogram can be widely and accurately used due to its large sample size. This study provides a relatively accurate predictive tool for postoperative recurrence in patients with GIST. Each postoperative patient was scored according to the nomogram. The higher the score, the higher the probability of postoperative recurrence and the higher the follow-up frequency.

GISTs can occur in any part of the digestive tract or in the omentum, mesentery, peritoneum, and abdominal pelvic cavity, but the stomach (approximately 60%) is the most common, followed by the small intestine (25% to 30%), while a few cases occur in the colorectal (approximately 5%), esophagus and other areas[22]. The results of this group of cases show that the stomach and small intestine are the most common sites of GISTs, similar to previous research reports. Tumors in different parts have large differences in their malignancy and prognosis. For GISTs, the location of tumor growth is also an extremely important prognostic factor. A retrospective study of 332 patients with GIST showed that the tumors with good prognosis were the esophagus, stomach, duodenum, small intestine, parenteral and colorectal[23]. We screened tumor sites for potential predictors of postoperative recurrence using LASSO regression analysis, and further differences in tumor location were found in the multivariate logistic regression analysis ($P < 0.003$). In this study, nomograms showed that tumors in the colorectal region had the highest risk of postoperative recurrence, followed by the small intestine, and finally the stomach region. Studies have shown that the prognosis of gastric stromal tumors is significantly better than that of small intestinal stromal tumors, which is mainly due to the invasive growth of small intestinal stromal tumors, often with early peritoneal metastasis, and the ease with which they rupture; therefore, duodenal stromal tumors should be actively treated as soon as possible[23]. With larger tumors, preoperative treatment should first be considered, and the rate of pancreaticoduodenectomy should be minimized. The degree of malignancy of colorectal stromal tumors is higher than that of small intestine and gastric stromal tumors[24], and the risk of recurrence is the highest. GISTs generally occur most frequently in middle-aged and elderly people, and the most common onset is between 50 and 70 years old[25]. In this study, the mean age was 57.0 ± 11.8 years, and 71.5% of patients were aged 50 years or older. There was no difference based on sex, which was consistent with the above study reports.

At present, the influence of mitotic rate and tumor size on the prognosis of GIST has been generally recognized, and multiple staging systems have been applied to the risk assessment of recurrence after GIST. It has been reported in a study that univariate survival analysis showed that the factors that had a significant impact on prognosis were the primary site of the tumor, tumor diameter and the mitotic rate ($P < 0.05$)[26]. Multivariate survival analysis showed that the mitotic rate is an independent prognostic factor for patients with GIST metastasis or recurrence. Catena *et al*[27] showed that tumor size, mitotic rate, and microscopic resection margins predicted disease-free survival in GIST patients. In general, the larger the tumor size is, the higher the malignant biological behavior, and the relatively poor the prognosis. The prognosis of patients with GIST is closely related to the mitotic rate, and those with a high mitotic rate often show a worse prognosis[28]. The high mitotic rate and larger lesion range in this study significantly increased the risk of recurrence after GIST, consistent with most studies.

In recent years, with the development of immunohistochemistry technology, we often use tumor immunohistochemical markers for tumor prognosis analysis. Ki-67 is a nuclear antigen expressed in proliferating cells, and its antibody marks proliferating cells in the non-G0 phase of the whole cell cycle, so it can be used as a marker of cell proliferation. In breast cancer, Ki-67 positivity has been shown to be negatively correlated with disease-free survival and overall survival[28]. It has been reported[29] that the expression level of Ki-67 is important for judging the malignant degree of GIST. By analyzing the correlation between immunohistochemical markers and prognosis in GIST samples, Kadado *et al*[30] showed that there was a statistically significant difference in the Ki-67 proliferation index between localized GIST and patients with recurrence and metastasis ($P < 0.001$). The nomograms in this study showed that $Ki-67 \geq 5$ increased the risk of recurrence after GIST, consistent with the results of the above studies. It is suggested that Ki-67 can be used as an important factor to evaluate the recurrence or metastasis of GIST. In addition, for patients treated with imatinib before surgery, due to tumor liquefaction necrosis, the capsule is prone to spontaneous rupture, resulting in tumor cell dissemination, postoperative recurrence or distant metastasis. The 5-year recurrence-free survival rate of tumor necrosis was significantly lower than that of nonnecrotic rupture ($P < 0.016$), and the risk of death in the former was 2.79-3.03 times that of the latter[28]. Clinically, some patients with GISTs often have necrosis of the lesion at the beginning of diagnosis, which may be associated with metastasis of the abdomen and liver. Distant metastasis is one of the important factors affecting the prognosis of GIST. Patients with distant metastasis or local infiltration metastasis are more aggressive, although the prognosis is still poor after combined resection of the metastatic lesions. This is consistent with the fact that nomogram tumor intratumoral necrosis in this study can increase the risk of recurrence after GIST. Therefore, tumor necrosis may also be an important factor in predicting prognosis.

CONCLUSION

The occurrence, development and prognosis of tumors are the result of a multifactor interaction. It is generally believed that the biological behavior of GIST is the most important factor in determining its prognosis. At present, among the influencing factors of GIST prognosis, it is most common to consider the tumor location, size, and mitotic rate. The prediction model developed in this study also includes Ki-67, tumor intratumoral necrosis and age-related indicators. Comprehensive assessment of patient outcomes will assist in guiding individualized treatment.

ARTICLE HIGHLIGHTS

Research background

There are many staging systems for gastrointestinal stromal tumors (GISTs), and the risk indicators selected are also different; thus, it is not possible to quantify the risk of recurrence among individual patients.

Research motivation

To develop a nomogram of postoperative recurrence risk factors in GIST patients to further guide individualized treatment.

Research objectives

To investigate the risk factors for postoperative recurrence in GIST patients.

Research methods

We retrospectively analyzed the clinical and pathological data of 130 patients with GIST. The least absolute shrinkage and selection operator regression model and multivariable logistic regression analysis were used to develop a prediction model. The index of concordance (C-index), calibration

curve, receiver operating characteristic curve, and decision curve analysis were used to assess the discrimination, calibration, and clinical usefulness of the predictive model.

Research results

The nomogram included tumor site, lesion size, mitotic rate/50 high power fields, Ki-67 index, intracranial necrosis, and age as predictors. The model presented a perfect discrimination with a reliable C-index. The receiver operating characteristic curve indicated a good predictive value. Decision curve analysis showed that the predicting recurrence nomogram was clinically feasible.

Research conclusions

This recurrence nomogram combines tumor site, lesion size, mitotic rate, Ki-67 index, intracranial necrosis, and age and can easily predict patient prognosis.

Research perspectives

We look forward to conducting a multicenter large-sample prospective controlled study in the future to further explore risk factors after GIST surgery, to better guide individualized treatment.

FOOTNOTES

Author contributions: Guan SH is the author of the main idea, conceived and designed the study, collected and analyzed the data, and wrote and revised the manuscript; Wang C conceived and designed the study, collected and analyzed the data and wrote the manuscript; Wang Q and Ma XM participated in drafting and revising the manuscript, and collected the data; Qiao WJ, Li MZ and Lai MG revised the manuscript and analyzed the data. All authors approved the final version of the manuscript.

Institutional review board statement: This study was approved by the Institutional Research Ethics Board of Qinghai University Affiliated Hospital (Xining, China) and followed the Declaration of Helsinki.

Informed consent statement: All patients signed informed consent forms.

Conflict-of-interest statement: Each author in this paper declares no conflict of interest.

Data sharing statement: No additional data are available.

Open-Access: This article is an open-access article that was selected by an in-house editor and fully peer-reviewed by external reviewers. It is distributed in accordance with the Creative Commons Attribution NonCommercial (CC BY-NC 4.0) license, which permits others to distribute, remix, adapt, build upon this work non-commercially, and license their derivative works on different terms, provided the original work is properly cited and the use is non-commercial. See: <https://creativecommons.org/licenses/by-nc/4.0/>

Country/Territory of origin: China

ORCID number: Shi-Hao Guan 0000-0003-3520-7370; Qiong Wang 0000-0001-5923-2779; Xiao-Ming Ma 0000-0002-2659-4092; Wen-Jie Qiao 0000-0001-5302-2009; Ming-Zheng Li 0000-0003-1974-6112; Ming-Gui Lai 0000-0001-8419-9317; Cheng Wang 0000-0003-4942-7833.

S-Editor: Zhang H

L-Editor: A

P-Editor: Zhang H

REFERENCES

- 1 **Wang MX**, Devine C, Segaran N, Ganeshan D. Current update on molecular cytogenetics, diagnosis and management of gastrointestinal stromal tumors. *World J Gastroenterol* 2021; **27**: 7125-7133 [PMID: 34887632 DOI: 10.3748/wjg.v27.i41.7125]
- 2 **Tan AD**, Willemsma K, MacNeill A, DeVries K, Srikanthan A, McGahan C, Hamilton T, Li H, Blanke CD, Simmons CE. Tyrosine kinase inhibitors significantly improved survival outcomes in patients with metastatic gastrointestinal stromal tumour: a multi-institutional cohort study. *Curr Oncol* 2020; **27**: e276-e282 [PMID: 32669934 DOI: 10.3747/co.27.5869]
- 3 **Blay JY**, Kang YK, Nishida T, von Mehren M. Gastrointestinal stromal tumours. *Nat Rev Dis Primers* 2021; **7**: 22 [PMID: 33737510 DOI: 10.1038/s41572-021-00254-5]
- 4 **Bae JH**, Lee CS, Han SR, Park SM, Lee YS, Lee IK. Differences in the prognostic impact of post-operative systemic inflammation and infection in colorectal cancer patients: Using white blood cell counts and procalcitonin levels. *Surg Oncol* 2020; **35**: 374-381 [PMID: 33035785 DOI: 10.1016/j.suronc.2020.09.017]
- 5 **Joensuu H**. Risk stratification of patients diagnosed with gastrointestinal stromal tumor. *Hum Pathol* 2008; **39**: 1411-1419

- [PMID: 18774375 DOI: 10.1016/j.humpath.2008.06.025]
- 6 **Kallen ME**, Hornick JL. The 2020 WHO Classification: What's New in Soft Tissue Tumor Pathology? *Am J Surg Pathol* 2021; **45**: e1-e23 [PMID: 32796172 DOI: 10.1097/PAS.0000000000001552]
 - 7 **Zhao WY**, Zhao G, Wang M. [Updates and interpretations of the NCCN Clinical Practice Guidelines (2019 6th version) on gastrointestinal stromal tumor]. *Zhonghua Wei Chang Wai Ke Za Zhi* 2020; **23**: 866-871 [PMID: 32927511 DOI: 10.3760/cma.j.cn.441530-20200731-00454]
 - 8 **Khoo CY**, Chai X, Quek R, Teo MCC, Goh BKP. Systematic review of current prognostication systems for primary gastrointestinal stromal tumors. *Eur J Surg Oncol* 2018; **44**: 388-394 [PMID: 29422251 DOI: 10.1016/j.ejso.2017.12.006]
 - 9 **Joensuu H**, Vehtari A, Riihimäki J, Nishida T, Steigen SE, Brabec P, Plank L, Nilsson B, Cirilli C, Braconi C, Bordoni A, Magnusson MK, Linke Z, Sufliarsky J, Federico M, Jonasson JG, Dei Tos AP, Rutkowski P. Risk of recurrence of gastrointestinal stromal tumour after surgery: an analysis of pooled population-based cohorts. *Lancet Oncol* 2012; **13**: 265-274 [PMID: 22153892 DOI: 10.1016/S1470-2045(11)70299-6]
 - 10 **Zhang J**, Jiang L, Zhu X. A Novel Nomogram for Prediction of Early Postoperative Complications of Total Gastrectomy for Gastric Cancer. *Cancer Manag Res* 2021; **13**: 7579-7591 [PMID: 34629904 DOI: 10.2147/CMAR.S333172]
 - 11 **Wang Z**, Li H, Liu T, Sun Z, Yang F, Jiang G. Development and External Validation of a Nomogram for Predicting Cancer-Specific Survival of Non-Small Cell Lung Cancer Patients With Ipsilateral Pleural Dissemination. *Front Oncol* 2021; **11**: 645486 [PMID: 34350108 DOI: 10.3389/fonc.2021.645486]
 - 12 **Friedman J**, Hastie T, Tibshirani R. Regularization Paths for Generalized Linear Models via Coordinate Descent. *J Stat Softw* 2010; **33**: 1-22 [PMID: 20808728]
 - 13 **Sauerbrei W**, Royston P, Binder H. Selection of important variables and determination of functional form for continuous predictors in multivariable model building. *Stat Med* 2007; **26**: 5512-5528 [PMID: 18058845 DOI: 10.1002/sim.3148]
 - 14 **Kidd AC**, McGettrick M, Tsim S, Halligan DL, Bylesjo M, Blyth KG. Survival prediction in mesothelioma using a scalable Lasso regression model: instructions for use and initial performance using clinical predictors. *BMJ Open Respir Res* 2018; **5**: e000240 [PMID: 29468073 DOI: 10.1136/bmjresp-2017-000240]
 - 15 **Pencina MJ**, D'Agostino RB. Overall C as a measure of discrimination in survival analysis: model specific population value and confidence interval estimation. *Stat Med* 2004; **23**: 2109-2123 [PMID: 15211606 DOI: 10.1002/sim.1802]
 - 16 **Vickers AJ**, Cronin AM, Elkin EB, Gonen M. Extensions to decision curve analysis, a novel method for evaluating diagnostic tests, prediction models and molecular markers. *BMC Med Inform Decis Mak* 2008; **8**: 53 [PMID: 19036144 DOI: 10.1186/1472-6947-8-53]
 - 17 **Li M**, Zhang J, Dan Y, Yao Y, Dai W, Cai G, Yang G, Tong T. A clinical-radiomics nomogram for the preoperative prediction of lymph node metastasis in colorectal cancer. *J Transl Med* 2020; **18**: 46 [PMID: 32000813 DOI: 10.1186/s12967-020-02215-0]
 - 18 **Mantese G**. Gastrointestinal stromal tumor: epidemiology, diagnosis, and treatment. *Curr Opin Gastroenterol* 2019; **35**: 555-559 [PMID: 31577561 DOI: 10.1097/MOG.0000000000000584]
 - 19 **Yin XN**, Tang SM, Yin Y, Shen CY, Zhang B, Chen ZX. [Associations of Preoperative Platelet-to-lymphocyte Ratio and Derived Neutrophil-to-lymphocyte Ratio with the Prognosis of Gastrointestinal Stromal Tumor]. *Sichuan Da Xue Xue Bao Yi Xue Ban* 2017; **48**: 239-243 [PMID: 28612534]
 - 20 **Lou S**, Meng F, Yin X, Zhang Y, Han B, Xue Y. Comprehensive Characterization of RNA Processing Factors in Gastric Cancer Identifies a Prognostic Signature for Predicting Clinical Outcomes and Therapeutic Responses. *Front Immunol* 2021; **12**: 719628 [PMID: 34413861 DOI: 10.3389/fimmu.2021.719628]
 - 21 **Cao R**, Yuan L, Ma B, Wang G, Qiu W, Tian Y. An EMT-related gene signature for the prognosis of human bladder cancer. *J Cell Mol Med* 2020; **24**: 605-617 [PMID: 31657881 DOI: 10.1111/jcmm.14767]
 - 22 **Sugiyama Y**, Sasaki M, Kouyama M, Tazaki T, Takahashi S, Nakamitsu A. Current treatment strategies and future perspectives for gastrointestinal stromal tumors. *World J Gastrointest Pathophysiol* 2022; **13**: 15-33 [PMID: 35116177 DOI: 10.4291/wjgp.v13.i1.15]
 - 23 **Qi Y**, Zhao W, Wang Z, Li T, Meng X. Tumor sites and microscopic indicators are independent prognosis predictors of gastrointestinal stromal tumors. *Tohoku J Exp Med* 2014; **233**: 65-72 [PMID: 24827382 DOI: 10.1620/tjem.233.65]
 - 24 **Roşulescu A**, Pechianu N, Hortopan M, Mihai M, Dima S, Stroescu C, Zamfir R, Braşoveanu V, Leonard D, Vasilescu C, Popescu I, Herlea V. Gastrointestinal stromal tumors of the colon and rectum. *Pol J Pathol* 2020; **71**: 200-206 [PMID: 33112110 DOI: 10.5114/pjp.2020.99786]
 - 25 **Serrano C**, George S. Gastrointestinal Stromal Tumor: Challenges and Opportunities for a New Decade. *Clin Cancer Res* 2020; **26**: 5078-5085 [PMID: 32601076 DOI: 10.1158/1078-0432.CCR-20-1706]
 - 26 **Zemla P**, Stelmach A, Jabłońska B, Gołka D, Mrowiec S. A Retrospective Study of Postoperative Outcomes in 98 Patients Diagnosed with Gastrointestinal Stromal Tumor (GIST) of the Upper, Middle, and Lower Gastrointestinal Tract Between 2009 and 2019 at a Single Center in Poland. *Med Sci Monit* 2021; **27**: e932809 [PMID: 34645778 DOI: 10.12659/MSM.932809]
 - 27 **Catena F**, Di Battista M, Ansaloni L, Pantaleo M, Fusaroli P, Di Scioscio V, Santini D, Nannini M, Saponara M, Ponti G, Persiani R, Delrio P, Cocolini F, Di Saverio S, Biasco G, Lazzareschi D, Pinna A; GISTologist Study Group. Microscopic margins of resection influence primary gastrointestinal stromal tumor survival. *Onkologie* 2012; **35**: 645-648 [PMID: 23147540 DOI: 10.1159/000343585]
 - 28 **Cavnaar MJ**, Seier K, Curtin C, Balachandran VP, Coit DG, Yoon SS, Crago AM, Strong VE, Tap WD, Gönen M, Antonescu CR, Brennan MF, Singer S, DeMatteo RP. Outcome of 1000 Patients With Gastrointestinal Stromal Tumor (GIST) Treated by Surgery in the Pre- and Post-imatinib Eras. *Ann Surg* 2021; **273**: 128-138 [PMID: 30946076 DOI: 10.1097/SLA.0000000000003277]
 - 29 **Zhu X**, Chen L, Huang B, Wang Y, Ji L, Wu J, Di G, Liu G, Yu K, Shao Z, Wang Z. The prognostic and predictive potential of Ki-67 in triple-negative breast cancer. *Sci Rep* 2020; **10**: 225 [PMID: 31937819 DOI: 10.1038/s41598-019-57094-3]
 - 30 **Kadado KJ**, Abernathy OL, Salyers WJ, Kallail KJ. Gastrointestinal Stromal Tumor and Ki-67 as a Prognostic Indicator. *Cureus* 2022; **14**: e20868 [PMID: 35145775 DOI: 10.7759/cureus.20868]



Published by **Baishideng Publishing Group Inc**
7041 Koll Center Parkway, Suite 160, Pleasanton, CA 94566, USA

Telephone: +1-925-3991568

E-mail: bpgoffice@wjgnet.com

Help Desk: <https://www.f6publishing.com/helpdesk>

<https://www.wjgnet.com>

