

# World Journal of *Gastrointestinal Surgery*

*World J Gastrointest Surg* 2023 May 27; 15(5): 745-1006



## Contents

Monthly Volume 15 Number 5 May 27, 2023

## REVIEW

- 745 Impact of anastomotic leakage on long-term prognosis after colorectal cancer surgery  
*Tonini V, Zanni M*
- 757 Application of indocyanine green in surgery: A review of current evidence and implementation in trauma patients  
*Abdelrahman H, El-Menyar A, Peralta R, Al-Thani H*

## MINIREVIEWS

- 776 Global dissemination of minimally invasive living donor hepatectomy: What are the barriers?  
*Kakos CD, Papanikolaou A, Ziogas IA, Tsoulfas G*
- 788 Post-COVID-19 cholangiopathy: Current understanding and management options  
*Veerankutty FH, Sengupta K, Vij M, Rammohan A, Jothamani D, Murali A, Rela M*
- 799 Changing trends in the minimally invasive surgery for corrosive esophagogastric stricture  
*Kalayarasan R, Durgesh S*

## ORIGINAL ARTICLE

## Basic Study

- 812 Distribution of splenic artery lymph nodes and splenic hilar lymph nodes  
*Umebayashi Y, Muro S, Tokunaga M, Saito T, Sato Y, Tanioka T, Kinugasa Y, Akita K*

## Case Control Study

- 825 Preservation of left colic artery in laparoscopic colorectal operation: The benefit challenge  
*Liu FC, Song JN, Yang YC, Zhang ZT*

## Retrospective Cohort Study

- 834 Surgical management of high-grade pancreatic injuries: Insights from a high-volume pancreaticobiliary specialty unit  
*Chui JN, Kotecha K, Gall TM, Mittal A, Samra JS*
- 847 Surgical management of hydatid cyst disease of the liver: An improvement from our previous experience?  
*Zaharie F, Valean D, Zaharie R, Popa C, Mois E, Schlanger D, Fetti A, Zdrehus C, Ciocan A, Al-Hajjar N*

## Retrospective Study

- 859 Influence of liver function after laparoscopy-assisted vs totally laparoscopic gastrectomy  
*Xiao F, Qiu XF, You CW, Xie FP, Cai YY*

- 871** Rikkunshito increases appetite by enhancing gastrointestinal and incretin hormone levels in patients who underwent pylorus-preserving pancreaticoduodenectomy: A retrospective study

*Kono H, Hosomura N, Amemiya H, Shoda K, Furuya S, Akaike H, Kawaguchi Y, Kawaida H, Ichikawa D*

- 882** Diagnostic performance of texture analysis in the differential diagnosis of perianal fistulising Crohn's disease and glandular anal fistula

*Zhu X, Ye DD, Wang JH, Li J, Liu SW*

- 892** Elderly patients over 80 years undergoing colorectal cancer resection: Development and validation of a predictive nomogram for survival

*Chok AY, Zhao Y, Chen HLR, Tan IEH, Chew DHW, Zhao Y, Au MKH, Tan EJKW*

- 906** Retrospective efficacy analysis of olaparib combined with bevacizumab in the treatment of advanced colorectal cancer

*Jiang YL, Fu XY, Yin ZH*

### Observational Study

- 917** CD4<sup>+</sup>CD25<sup>+</sup> regulatory T cells decreased future liver remnant after associating liver partition and portal vein ligation for staged hepatectomy

*Wang W, Ye CH, Deng ZF, Wang JL, Zhang L, Bao L, Xu BH, Zhu H, Guo Y, Wen Z*

- 931** Diagnostic value of matrix metalloproteinases 2, 7 and 9 in urine for early detection of colorectal cancer

*Peng L, Zhang X, Zhang ML, Jiang T, Zhang PJ*

### SYSTEMATIC REVIEWS

- 940** How far is the endoscopist to blame for a percutaneous endoscopic gastrostomy complication?

*Stavrou G, Gionga P, Chatziantoniou G, Tzikos G, Menni A, Panidis S, Shrewsbury A, Kotzampassi K*

### META-ANALYSIS

- 953** Nutritional status efficacy of early nutritional support in gastrointestinal care: A systematic review and meta-analysis

*He LB, Liu MY, He Y, Guo AL*

### CASE REPORT

- 965** Precise mapping of hilar cholangiocarcinoma with a skip lesion by SpyGlass cholangioscopy: A case report

*Chiang CH, Chen KC, Devereaux B, Chung CS, Kuo KC, Lin CC, Lin CK, Wang HP, Chen KH*

- 972** Mallory-Weiss syndrome from giant gastric trichobezoar: A case report

*Lieto E, Auricchio A, Belfiore MP, Del Sorbo G, De Sena G, Napolitano V, Ruggiero A, Galizia G, Cardella F*

- 978** Giant teratoma with isolated intestinal duplication in adult: A case report and review of literature

*Xiong PF, Yang L, Mou ZQ, Jiang Y, Li J, Ye MX*

- 984** Computer-assisted rescue of the inferior mesenteric artery in a child with a giant ganglioneuroblastoma: A case report

*Xiu WL, Liu J, Zhang JL, Su N, Wang FJ, Hao XW, Wang FF, Dong Q*

- 992** Curative resection of leiomyosarcoma of the descending colon with metachronous liver metastasis: A case report  
*Lee SH, Bae SH, Lee SC, Ahn TS, Kim Z, Jung HI*
- 1000** Modified endoscopic submucosal tunnel dissection for large esophageal submucosal gland duct adenoma: A case report  
*Chen SY, Xie ZF, Jiang Y, Lin J, Shi H*

**ABOUT COVER**

Editorial Board Member of *World Journal of Gastrointestinal Surgery*, Ashok Kumar, BSc, FACS, FASCRS, FICS, FRCS, FRCS (Ed), MBBS, MCh, Professor, Department of Surgical Gastroenterology, Sanjay Gandhi Post Graduate Institute of Medical Sciences, Lucknow 226014, Uttar Pradesh, India. doc.ashokgupta@gmail.com

**AIMS AND SCOPE**

The primary aim of *World Journal of Gastrointestinal Surgery* (WJGS, *World J Gastrointest Surg*) is to provide scholars and readers from various fields of gastrointestinal surgery with a platform to publish high-quality basic and clinical research articles and communicate their research findings online.

WJGS mainly publishes articles reporting research results and findings obtained in the field of gastrointestinal surgery and covering a wide range of topics including biliary tract surgical procedures, biliopancreatic diversion, colectomy, esophagectomy, esophagostomy, pancreas transplantation, and pancreatectomy, etc.

**INDEXING/ABSTRACTING**

The WJGS is now abstracted and indexed in Science Citation Index Expanded (SCIE, also known as SciSearch®), Current Contents/Clinical Medicine, Journal Citation Reports/Science Edition, PubMed, PubMed Central, Reference Citation Analysis, China National Knowledge Infrastructure, China Science and Technology Journal Database, and Superstar Journals Database. The 2022 Edition of Journal Citation Reports® cites the 2021 impact factor (IF) for WJGS as 2.505; IF without journal self cites: 2.473; 5-year IF: 3.099; Journal Citation Indicator: 0.49; Ranking: 104 among 211 journals in surgery; Quartile category: Q2; Ranking: 81 among 93 journals in gastroenterology and hepatology; and Quartile category: Q4.

**RESPONSIBLE EDITORS FOR THIS ISSUE**

Production Editor: Rui-Rui Wu; Production Department Director: Xiang Li; Editorial Office Director: Jia-Ru Fan.

**NAME OF JOURNAL**

*World Journal of Gastrointestinal Surgery*

**ISSN**

ISSN 1948-9366 (online)

**LAUNCH DATE**

November 30, 2009

**FREQUENCY**

Monthly

**EDITORS-IN-CHIEF**

Peter Schemmer

**EDITORIAL BOARD MEMBERS**

<https://www.wjgnet.com/1948-9366/editorialboard.htm>

**PUBLICATION DATE**

May 27, 2023

**COPYRIGHT**

© 2023 Baishideng Publishing Group Inc

**INSTRUCTIONS TO AUTHORS**

<https://www.wjgnet.com/bpg/gerinfo/204>

**GUIDELINES FOR ETHICS DOCUMENTS**

<https://www.wjgnet.com/bpg/GerInfo/287>

**GUIDELINES FOR NON-NATIVE SPEAKERS OF ENGLISH**

<https://www.wjgnet.com/bpg/gerinfo/240>

**PUBLICATION ETHICS**

<https://www.wjgnet.com/bpg/GerInfo/288>

**PUBLICATION MISCONDUCT**

<https://www.wjgnet.com/bpg/gerinfo/208>

**ARTICLE PROCESSING CHARGE**

<https://www.wjgnet.com/bpg/gerinfo/242>

**STEPS FOR SUBMITTING MANUSCRIPTS**

<https://www.wjgnet.com/bpg/GerInfo/239>

**ONLINE SUBMISSION**

<https://www.f6publishing.com>



## Modified endoscopic submucosal tunnel dissection for large esophageal submucosal gland duct adenoma: A case report

Su-Yu Chen, Zhao-Fei Xie, Yan Jiang, Juan Lin, Hong Shi

**Specialty type:** Gastroenterology and hepatology

**Provenance and peer review:**

Unsolicited article; Externally peer reviewed.

**Peer-review model:** Single blind

**Peer-review report's scientific quality classification**

Grade A (Excellent): 0  
Grade B (Very good): B, B  
Grade C (Good): C, C  
Grade D (Fair): 0  
Grade E (Poor): 0

**P-Reviewer:** Atanasova EG, Bulgaria; Atqiaee K, Iran; Mokhtar MN, Malaysia; Piltcher-da-Silva R, Brazil

**Received:** January 16, 2023

**Peer-review started:** January 16, 2023

**First decision:** February 1, 2023

**Revised:** February 20, 2023

**Accepted:** March 30, 2023

**Article in press:** March 30, 2023

**Published online:** May 27, 2023



**Su-Yu Chen, Zhao-Fei Xie, Yan Jiang, Juan Lin, Hong Shi,** Department of Endoscopy Center, Clinical Oncology School of Fujian Medical University, Fujian Cancer Hospital, Fuzhou 350014, Fujian Province, China

**Corresponding author:** Hong Shi, MD, Chief Doctor, Department of Endoscopy Center, Clinical Oncology School of Fujian Medical University, Fujian Cancer Hospital, No. 420 Fuma Road, Fuzhou 350014, Fujian Province, China. [endoshihong@126.com](mailto:endoshihong@126.com)

### Abstract

#### BACKGROUND

With the recent improvement of endoscopic techniques, endoscopic ultrasound-guided fine needle aspiration and endoscopic submucosal tunnel dissection (ESTD) have been widely used for accurate diagnosis and dissection acceleration of esophageal tumors.

#### CASE SUMMARY

We used a modified submucosal tunnel technique during endoscopic *en bloc* resection in a 58-year-old man with large esophageal submucosal gland duct adenoma (ESGDA). During modified ESTD, the oral end of the involved mucosa was cut transversely, followed by a submucosal tunnel created from the proximal to the distal end, and the anal end of the involved mucosa blocked by the tumor was incised. As a result of retaining submucosal injection solutions using the submucosal tunnel technique, it was possible to reduce the amount of injection required and increase the efficiency and safety of dissection.

#### CONCLUSION

Modified ESTD is an effective treatment strategy for large ESGDAs. Single-tunnel ESTD appears to be a time-saving procedure compared with conventional endoscopic submucosal dissection.

**Key Words:** Esophageal submucosal gland duct adenoma; Endoscopic ultrasound-guided fine needle aspiration; Endoscopic submucosal tunnel dissection; Case report

©The Author(s) 2023. Published by Baishideng Publishing Group Inc. All rights reserved.

**Core Tip:** With the recent improvement of endoscopic techniques, endoscopic ultrasound-guided fine needle aspiration and endoscopic submucosal tunnel dissection (ESTD) have been widely used for accurate diagnosis and dissection acceleration. Here we used a modified submucosal tunnel technique during endoscopic *en bloc* resection in a 58-year-old man with large esophageal submucosal gland duct adenoma (ESGDA) 3.5 cm × 2.2 cm in size with negative margins. Modified ESTD is an effective treatment strategy for large ESGDAs. Single-tunnel ESTD appears to be a time-saving procedure compared with conventional ESD.

**Citation:** Chen SY, Xie ZF, Jiang Y, Lin J, Shi H. Modified endoscopic submucosal tunnel dissection for large esophageal submucosal gland duct adenoma: A case report. *World J Gastrointest Surg* 2023; 15(5): 1000-1006

**URL:** <https://www.wjgnet.com/1948-9366/full/v15/i5/1000.htm>

**DOI:** <https://dx.doi.org/10.4240/wjgs.v15.i5.1000>

## INTRODUCTION

The esophageal glands reside in the submucosal layer of the upper and lower segments of the esophagus, opening at the esophageal lumen by tortuous tubules. The glands play a role in protecting the esophagus from damage caused by acid exposure through the secretion of bicarbonate and prostaglandin. Esophageal submucosal gland duct adenoma (ESGDA) is quite rare and usually presents as a submucosal lesion with or without a central depression[1-2]. This is the first report of the successful resection of a large esophageal submucosal tumor (SMT) using endoscopic-related techniques.

## METHODS

As described in the published literature, single-tunnel ESTD[3] has shown greater efficiency for large superficial esophageal squamous cell neoplasms. In contrast to conventional ESTD, modified ESTD does not begin with cutting the distal end of the involved mucosa, which is occluded by a large esophageal SMT. First, the oral end of the involved mucosa was cut transversely. Subsequently, a submucosal tunnel was created from the proximal to the distal end. After completion of the tunnel, the lateral mucosa was incised, followed by the anal end of the involved mucosa, until complete removal of the tumor was achieved. Modified ESTD can be faster than conventional ESD for large esophageal tumors.

## CASE PRESENTATION

### Chief complaints

A 58-year-old man was referred to our hospital with a complaint of gastro-esophageal reflux symptoms for one month.

### History of present illness

Symptoms started 1 mo before presentation with recurrent retro-sternal heartburn.

### History of past illness

He was made a definite diagnosis of hypertension, and his blood pressure control is steady by oral anti-hypertensive drugs.

### Personal and family history

The patient denied any family history of malignant tumors.

### Physical examination

On physical examination, the vital signs were as follows: Body temperature, 36.5°C; blood pressure, 140/85 mmHg; heart rate, 85 beats per min; respiratory rate, 18 breaths per min. Furthermore, no enlargement was found in superficial lymph nodes. There was no obvious redness and swelling. Digital anal examination was not performed.

### Laboratory examinations

Levels of serum tumor markers were normal (carcinoembryonic antigen, 2.8 ng/mL; carbohydrate antigen 12-5, 12 U/mL; carbohydrate antigen 724, 0.33 U/mL), except elevated carbohydrate antigen 19-



9 at the level of 45.25 U/mL. No abnormality was found in routine blood, stool and urine analyses.

### Imaging examinations

White-light endoscopy showed one 35-mm SMT located in the lower thoracic esophagus, with a central depression with a reddish appearance, just above the squamous-columnar epithelium junction (Figure 1). Endoscopic ultrasound (EUS) showed that the SMT was a well-defined heterogeneous, hypoechoic lesion with scattered small anechoic areas in the third layer (Figure 2A). No vascular flow was noted on color Doppler within the lesion (Figure 2B). Elastography revealed a hard mass (Figure 2C). Both cytological and histological analysis of fine-needle aspiration (FNA) specimens reported atypical glandular epithelial cells, ruling out squamous carcinoma (Figure 3). Thorax computed tomography (CT) revealed an eccentric soft tissue density mass in the esophagus.

## FINAL DIAGNOSIS

Combined with the patient's medical history, the final diagnosis was esophageal benign submucosal mesenchymal tumor.

## TREATMENT

Given that the mass did not involve the muscularis propria, modified ESTD was performed using a single-accessory channel endoscope with a transparent cap attached to the front. First, the oral end of the involved mucosa was cut transversely. Subsequently, a submucosal tunnel was created from the proximal end to the distal end. After completion of the tunnel, the lateral mucosa was incised, followed by the anal end of the involved mucosa, until complete removal of the tumor was achieved (Figure 4). The post-ESTD defect was closed using repositionable clips in the distal-proximal sequence.

Subsequently, cefazolin sodium 1 g was administered intravenously twice a day for three days from the day of the resection.

## OUTCOME AND FOLLOW-UP

The procedure was completed without any adverse events, and the patient was discharged on postoperative day 7. Post-ESTD pathology confirmed an ESGDA 3.5 cm × 2.2 cm in size with negative margins. A cystic pattern with distinct 2-cell layers was observed, and the inner luminal cells were eosinophilic (Figure 5). Immunohistochemical staining showed the positive expression of P63, CK7, CK8/18, and Ki-67.

At 12 mo postoperatively, the patient received gastroscopy showing the esophageal wound healed well.

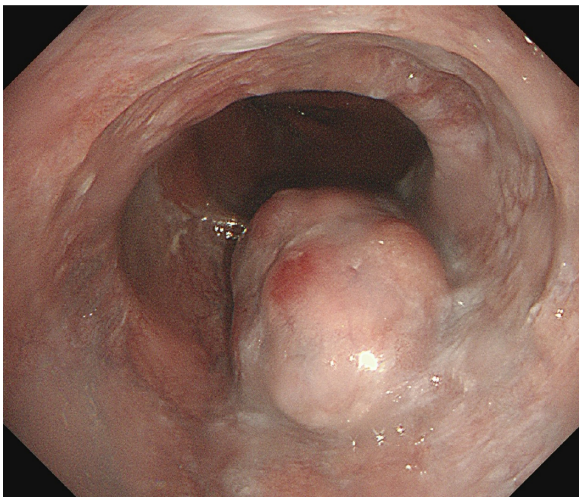
## DISCUSSION

To the best of our knowledge, this present study represents the largest ESGDA treated by modified ESTD to be reported in the literature. Published literature reports suggest a potential biological pathway for ESGDA to progress to malignancy; thus, resection of these tumors is recommended if possible.

As an esophageal subepithelial tumor, ESGDA is extremely easily mistaken for esophageal carcinoma. EUS evaluation is essential for evaluating subepithelial lesions. The typical EUS feature of ESGDA is a heterogeneous hypoechoic submucosal tumor located in the third sonographic layer, with a few cystic lesions, considered dilated adenomatous gland ducts[4]. Differentiation through EUS-guided FNA is helpful to judge the origin of pathology and make the decision for conservative management *vs* endoscopic or thoracoscopic intervention[5]. In our case, both cytological and histological analyses showed atypical glandular epithelial cells, so modified ESTD was selected for resection.

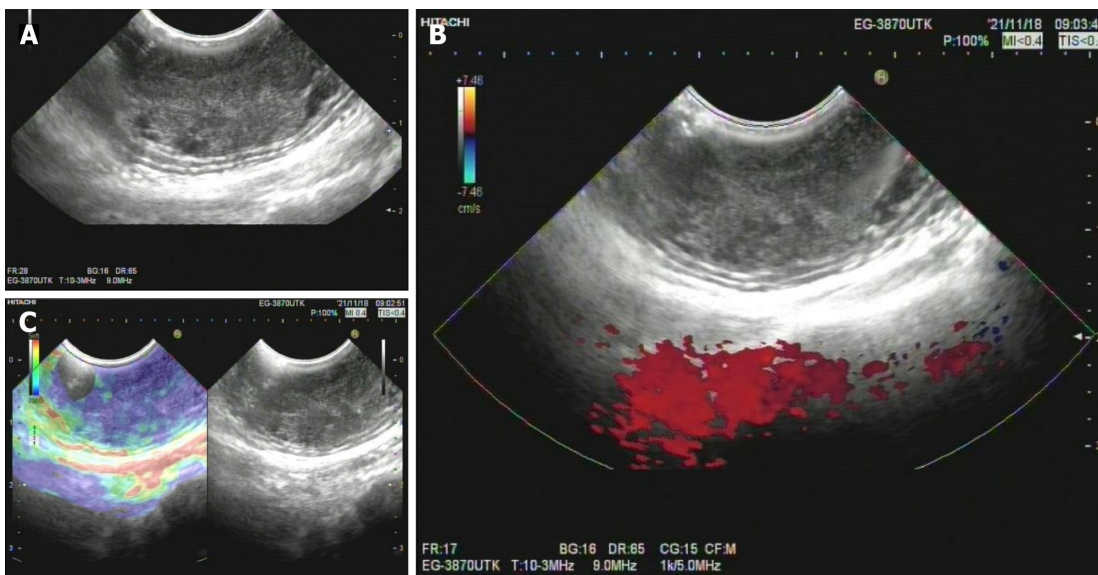
As reported previously[3], the major advantage of ESTD over ESD for large superficial esophageal squamous cell neoplasms is that most submucosal injection solutions can be retained in the submucosal layer, resulting in increased efficiency and safety of dissection. Also tunnel endoscopy can be used to expose the intact submucosal lesion between the mucosa and muscular layer of the esophagus. In view of the aforementioned advantages, we performed ESTD for *en bloc* resection of the large ESGDA, rather than conventional ESD that was adopted in the literature on ESGDA[1,2,4,6-8]. During routine ESTD, the distal end of the involved mucosa was first cut transversely. In this case, the obstruction caused by a large esophageal tumor made it difficult to cut the distal end of the involved mucosa at the beginning of the operation. An adjustment of the operative sequence was made in the modified ESTD. The oral end





DOI: 10.4240/wjgs.v15.i5.1000 Copyright ©The Author(s) 2023.

**Figure 1 Endoscopic findings.** One 35-mm submucosal tumor was located in the lower thoracic esophagus, with a central depression with a reddish appearance.



DOI: 10.4240/wjgs.v15.i5.1000 Copyright ©The Author(s) 2023.

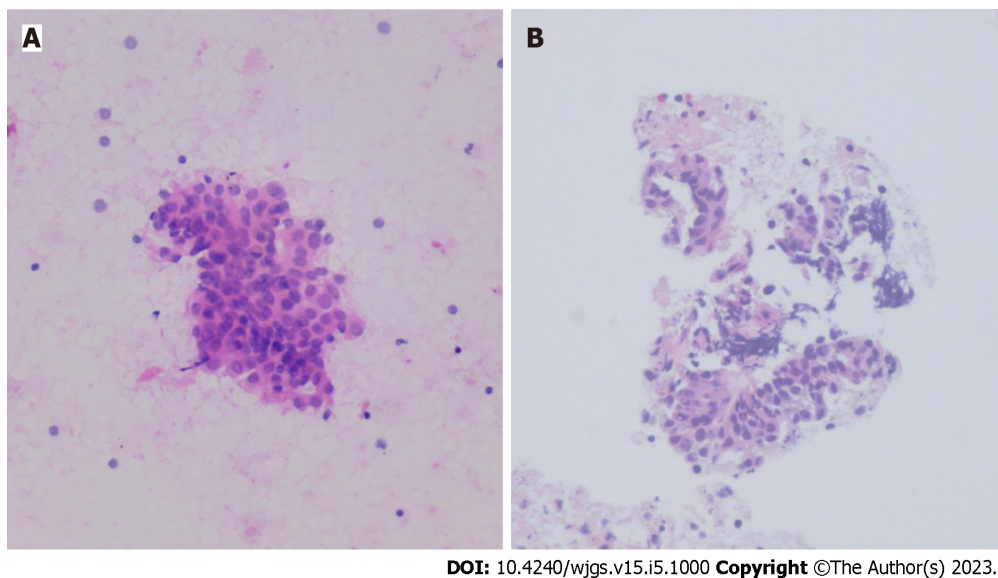
**Figure 2 Endoscopic ultrasound findings.** A: A well-defined heterogeneous, hypoechoic lesion with scattered small anechoic areas in the third layer; B: No vascular flow within the lesion; C: A hard mass revealed by elastography.

of the involved mucosa was first cut transversely, then the lateral mucosa was incised, followed by the anal end of the involved mucosa, after completion of the tunnel.

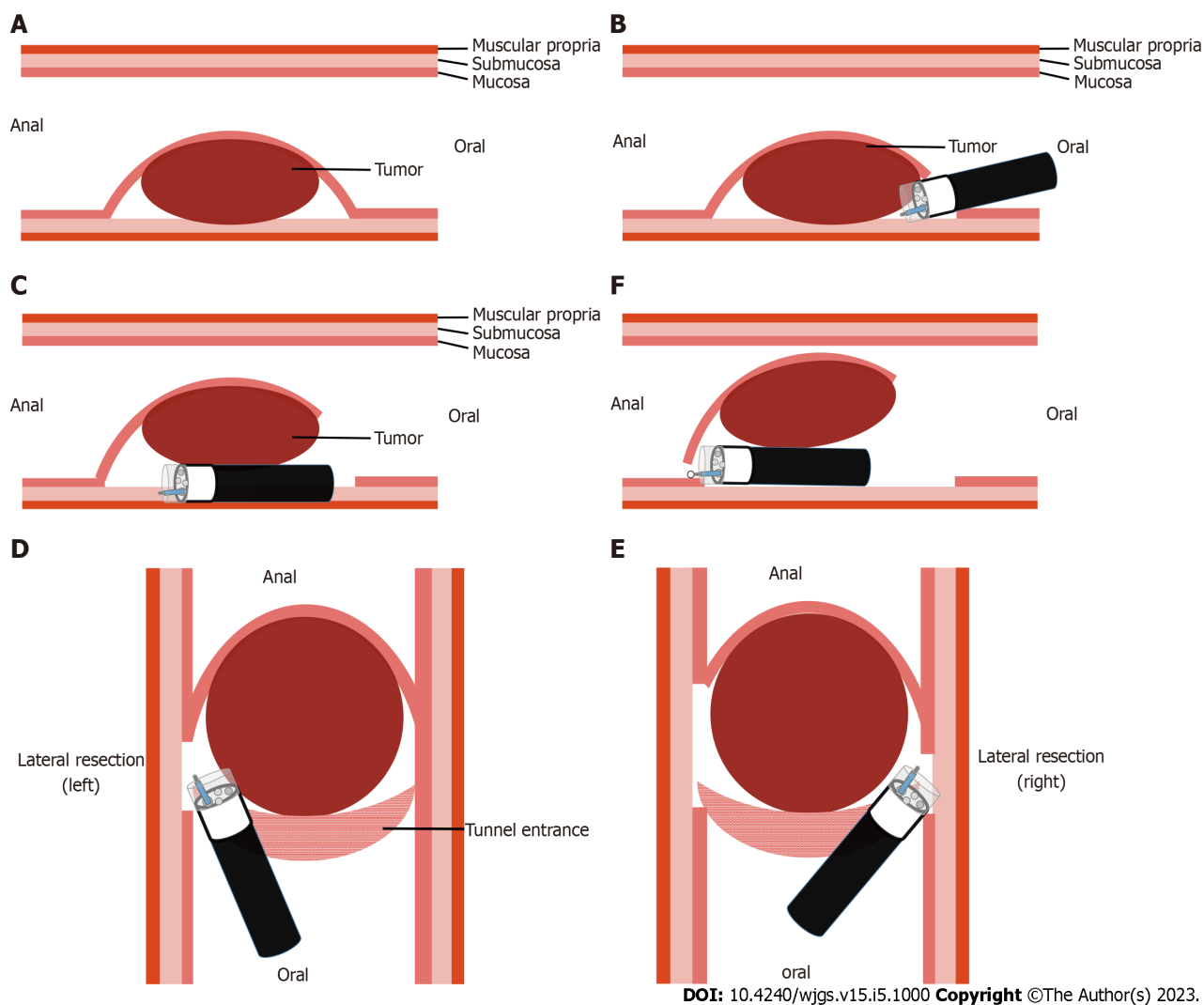
With regard to the disadvantages of ESTD, they include visual field loss when arterial bleeding requiring immediate endoscopic hemostasis occurs, due to the limited tunnel space. Furthermore, arterial bleeding in ESTD for lower esophageal tumors is relatively more common, differing from that involving the upper and middle esophagus.

## CONCLUSION

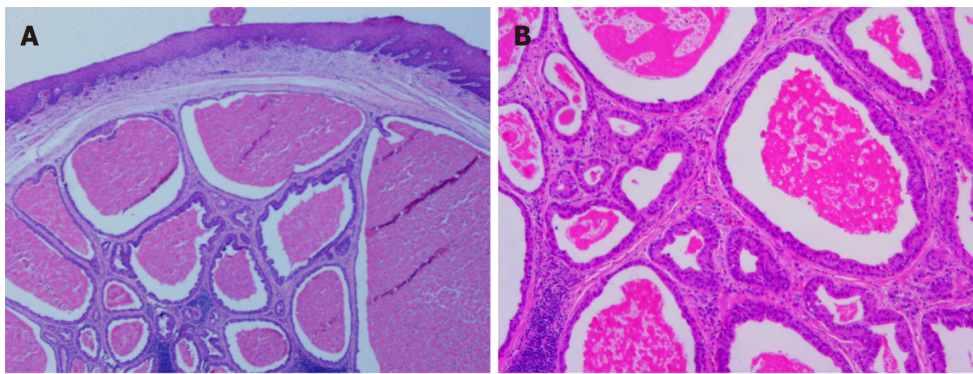
Modified ESTD is an effective treatment strategy for large ESGDAs. Single-tunnel modified ESTD appears to be a time-saving procedure compared with conventional ESD[9-10].



**Figure 3** Endoscopic ultrasound - fine-needle aspiration findings. A: Cytological analysis; B: Histological analysis.



**Figure 4** Schema of modified endoscopic submucosal tunnel dissection. A: Endoscopic submucosal tunnel dissection located in the submucosal layer; B: Oral end of the involved mucosa cut transversely; C: Submucosal tunnel created from the proximal end to the distal end; D: One lateral mucosa resected; E: The other lateral mucosa resected; F: Anal end of the involved mucosa resected.



DOI: 10.4240/wjgs.v15.i5.1000 Copyright ©The Author(s) 2023.

**Figure 5** Post-Endoscopic submucosal tunnel dissection pathology. A: A cystic pattern with distinct 2-cell layers; B: Eosinophilic inner luminal cells.

## FOOTNOTES

**Author contributions:** Chen SY, Xie ZF and Shi H contributed equally to this work. Chen SY, Xie ZF and Shi H were responsible for the study concept and design, including endoscopic procedures; all authors conducted the endoscopic operations together; Chen SY drafted the manuscript; Shi H revised and finalized the manuscript.

**Supported by** Young and Middle-aged Mainstay Talent Training Program of Fujian Provincial Health System, China, No. 2017-ZQN-16.

**Informed consent statement:** Informed written consent was obtained from the patient for publication of this report and any accompanying images.

**Conflict-of-interest statement:** The authors declare that they have no conflict of interest to disclose.

**CARE Checklist (2016) statement:** The authors have read the CARE Checklist (2016), and the manuscript was prepared and revised according to the CARE Checklist (2016).

**Open-Access:** This article is an open-access article that was selected by an in-house editor and fully peer-reviewed by external reviewers. It is distributed in accordance with the Creative Commons Attribution NonCommercial (CC BY-NC 4.0) license, which permits others to distribute, remix, adapt, build upon this work non-commercially, and license their derivative works on different terms, provided the original work is properly cited and the use is non-commercial. See: <https://creativecommons.org/licenses/by-nc/4.0/>

**Country/Territory of origin:** China

**ORCID number:** Su-Yu Chen 0000-0002-0199-6925; Zhao-Fei Xie 0000-0003-4398-425X; Juan Lin 0000-0003-1531-3539; Hong Shi 0000-0002-4240-6071.

**S-Editor:** Ma YJ

**L-Editor:** A

**P-Editor:** Zhao S

## REFERENCES

- 1 Yamamoto M, Nishida T, Nakamatsu D, Adachi S, Inada M. Endoscopic findings of esophageal gland duct adenoma resected by endoscopic submucosal dissection. *Gastrointest Endosc* 2020; **92**: 961-962 [PMID: 32360407 DOI: 10.1016/j.gie.2020.04.053]
- 2 Nie L, Wu HY, Shen YH, Fan XS, Sun Q, Huang Q, Chen J. Esophageal submucosal gland duct adenoma: a clinicopathological and immunohistochemical study with a review of the literature. *Dis Esophagus* 2016; **29**: 1048-1053 [PMID: 26542981 DOI: 10.1111/dote.12442]
- 3 Zhang W, Zhai Y, Chai N, Linghu E, Li H, Feng X. Single- and double-tunnel endoscopic submucosal tunnel dissection for large superficial esophageal squamous cell neoplasms. *Endoscopy* 2018; **50**: 505-510 [PMID: 29220859 DOI: 10.1055/s-0043-122384]
- 4 Agawa H, Matsushita M, Kusumi F, Nishio A, Takakuwa H. Esophageal submucosal gland duct adenoma: characteristic EUS and histopathologic features. *Gastrointest Endosc* 2003; **57**: 983-985 [PMID: 12776064 DOI: 10.1016/s0016-5107(03)70058-3]
- 5 Nashed B, Ayas MF, Gharib H, Issa M, Fatouh K, Sebastian F, Backer Z, Mahat K, Barawi M. Esophageal Schwannoma: An Important Differential Diagnosis for Esophageal Subepithelial Lesions. *Cureus* 2022; **14**: e27168 [PMID: 36039243]

- DOI: [10.7759/cureus.27168](https://doi.org/10.7759/cureus.27168)]
- 6 **Shibata M**, Kusafuka K, Ono H. A Rare Submucosal Tumor of the Esophagus. *Gastroenterology* 2017; **152**: e6-e7 [PMID: [27893983](https://pubmed.ncbi.nlm.nih.gov/27893983/) DOI: [10.1053/j.gastro.2016.08.017](https://doi.org/10.1053/j.gastro.2016.08.017)]
  - 7 **Matsushita M**, Okazaki K. Esophageal, submucosal, gland duct adenoma: role of EUS for endoscopic removal. *Gastrointest Endosc* 2005; **61**: 790; author reply 790-790; author reply 791 [PMID: [15856000](https://pubmed.ncbi.nlm.nih.gov/15856000/) DOI: [10.1016/s0016-5107\(05\)00142-2](https://doi.org/10.1016/s0016-5107(05)00142-2)]
  - 8 **Chinen T**, Misawa T, Yoshida K, Nasu T, Kubo S, Toyoshima S, Yao T, Harada N. Esophageal submucosal gland duct adenoma. *Gastrointest Endosc* 2004; **60**: 798-799 [PMID: [15557960](https://pubmed.ncbi.nlm.nih.gov/15557960/) DOI: [10.1016/s0016-5107\(04\)02026-7](https://doi.org/10.1016/s0016-5107(04)02026-7)]
  - 9 **Fan X**, Wu Q, Li R, Chen W, Xie H, Zhao X, Zhu S, Fan C, Li J, Liu M, Liu Z, Han Y. Clinical benefit of tunnel endoscopic submucosal dissection for esophageal squamous cancer: a multicenter, randomized controlled trial. *Gastrointest Endosc* 2022; **96**: 436-444 [PMID: [35461890](https://pubmed.ncbi.nlm.nih.gov/35461890/) DOI: [10.1016/j.gie.2022.04.016](https://doi.org/10.1016/j.gie.2022.04.016)]
  - 10 **Zou J**, Chai N, Linghu E, Li H, Chai M, Shi Y, Wang Z, Li L. Autologous skin-grafting surgery to prevent esophageal stenosis after complete circular endoscopic submucosal tunnel dissection: a case-matched controlled study. *Surg Endosc* 2021; **35**: 5962-5970 [PMID: [33029731](https://pubmed.ncbi.nlm.nih.gov/33029731/) DOI: [10.1007/s00464-020-08081-7](https://doi.org/10.1007/s00464-020-08081-7)]



Published by **Baishideng Publishing Group Inc**  
7041 Koll Center Parkway, Suite 160, Pleasanton, CA 94566, USA

**Telephone:** +1-925-3991568

**E-mail:** [bpgoffice@wjgnet.com](mailto:bpgoffice@wjgnet.com)

**Help Desk:** <https://www.f6publishing.com/helpdesk>

<https://www.wjgnet.com>

