

# World Journal of *Gastrointestinal Surgery*

*World J Gastrointest Surg* 2023 May 27; 15(5): 745-1006



## Contents

Monthly Volume 15 Number 5 May 27, 2023

### REVIEW

- 745 Impact of anastomotic leakage on long-term prognosis after colorectal cancer surgery  
*Tonini V, Zanni M*
- 757 Application of indocyanine green in surgery: A review of current evidence and implementation in trauma patients  
*Abdelrahman H, El-Menyar A, Peralta R, Al-Thani H*

### MINIREVIEWS

- 776 Global dissemination of minimally invasive living donor hepatectomy: What are the barriers?  
*Kakos CD, Papanikolaou A, Ziogas IA, Tsoulfas G*
- 788 Post-COVID-19 cholangiopathy: Current understanding and management options  
*Veerankutty FH, Sengupta K, Vij M, Rammohan A, Jothamani D, Murali A, Rela M*
- 799 Changing trends in the minimally invasive surgery for corrosive esophagogastric stricture  
*Kalayarasan R, Durgesh S*

### ORIGINAL ARTICLE

#### Basic Study

- 812 Distribution of splenic artery lymph nodes and splenic hilar lymph nodes  
*Umebayashi Y, Muro S, Tokunaga M, Saito T, Sato Y, Tanioka T, Kinugasa Y, Akita K*

#### Case Control Study

- 825 Preservation of left colic artery in laparoscopic colorectal operation: The benefit challenge  
*Liu FC, Song JN, Yang YC, Zhang ZT*

#### Retrospective Cohort Study

- 834 Surgical management of high-grade pancreatic injuries: Insights from a high-volume pancreaticobiliary specialty unit  
*Chui JN, Kotecha K, Gall TM, Mittal A, Samra JS*
- 847 Surgical management of hydatid cyst disease of the liver: An improvement from our previous experience?  
*Zaharie F, Valean D, Zaharie R, Popa C, Mois E, Schlanger D, Fetti A, Zdrehus C, Ciocan A, Al-Hajjar N*

#### Retrospective Study

- 859 Influence of liver function after laparoscopy-assisted vs totally laparoscopic gastrectomy  
*Xiao F, Qiu XF, You CW, Xie FP, Cai YY*

- 871** Rikkunshito increases appetite by enhancing gastrointestinal and incretin hormone levels in patients who underwent pylorus-preserving pancreaticoduodenectomy: A retrospective study

*Kono H, Hosomura N, Amemiya H, Shoda K, Furuya S, Akaike H, Kawaguchi Y, Kawaida H, Ichikawa D*

- 882** Diagnostic performance of texture analysis in the differential diagnosis of perianal fistulising Crohn's disease and glandular anal fistula

*Zhu X, Ye DD, Wang JH, Li J, Liu SW*

- 892** Elderly patients over 80 years undergoing colorectal cancer resection: Development and validation of a predictive nomogram for survival

*Chok AY, Zhao Y, Chen HLR, Tan IEH, Chew DHW, Zhao Y, Au MKH, Tan EJKW*

- 906** Retrospective efficacy analysis of olaparib combined with bevacizumab in the treatment of advanced colorectal cancer

*Jiang YL, Fu XY, Yin ZH*

### Observational Study

- 917** CD4<sup>+</sup>CD25<sup>+</sup> regulatory T cells decreased future liver remnant after associating liver partition and portal vein ligation for staged hepatectomy

*Wang W, Ye CH, Deng ZF, Wang JL, Zhang L, Bao L, Xu BH, Zhu H, Guo Y, Wen Z*

- 931** Diagnostic value of matrix metalloproteinases 2, 7 and 9 in urine for early detection of colorectal cancer

*Peng L, Zhang X, Zhang ML, Jiang T, Zhang PJ*

### SYSTEMATIC REVIEWS

- 940** How far is the endoscopist to blame for a percutaneous endoscopic gastrostomy complication?

*Stavrou G, Gionga P, Chatziantoniou G, Tzikos G, Menni A, Panidis S, Shrewsbury A, Kotzampassi K*

### META-ANALYSIS

- 953** Nutritional status efficacy of early nutritional support in gastrointestinal care: A systematic review and meta-analysis

*He LB, Liu MY, He Y, Guo AL*

### CASE REPORT

- 965** Precise mapping of hilar cholangiocarcinoma with a skip lesion by SpyGlass cholangioscopy: A case report

*Chiang CH, Chen KC, Devereaux B, Chung CS, Kuo KC, Lin CC, Lin CK, Wang HP, Chen KH*

- 972** Mallory-Weiss syndrome from giant gastric trichobezoar: A case report

*Lieto E, Auricchio A, Belfiore MP, Del Sorbo G, De Sena G, Napolitano V, Ruggiero A, Galizia G, Cardella F*

- 978** Giant teratoma with isolated intestinal duplication in adult: A case report and review of literature

*Xiong PF, Yang L, Mou ZQ, Jiang Y, Li J, Ye MX*

- 984** Computer-assisted rescue of the inferior mesenteric artery in a child with a giant ganglioneuroblastoma: A case report

*Xiu WL, Liu J, Zhang JL, Su N, Wang FJ, Hao XW, Wang FF, Dong Q*

- 992** Curative resection of leiomyosarcoma of the descending colon with metachronous liver metastasis: A case report  
*Lee SH, Bae SH, Lee SC, Ahn TS, Kim Z, Jung HI*
- 1000** Modified endoscopic submucosal tunnel dissection for large esophageal submucosal gland duct adenoma: A case report  
*Chen SY, Xie ZF, Jiang Y, Lin J, Shi H*

**ABOUT COVER**

Editorial Board Member of *World Journal of Gastrointestinal Surgery*, Ashok Kumar, BSc, FACS, FASCRS, FICS, FRCS, FRCS (Ed), MBBS, MCh, Professor, Department of Surgical Gastroenterology, Sanjay Gandhi Post Graduate Institute of Medical Sciences, Lucknow 226014, Uttar Pradesh, India. doc.ashokgupta@gmail.com

**AIMS AND SCOPE**

The primary aim of *World Journal of Gastrointestinal Surgery* (WJGS, *World J Gastrointest Surg*) is to provide scholars and readers from various fields of gastrointestinal surgery with a platform to publish high-quality basic and clinical research articles and communicate their research findings online.

WJGS mainly publishes articles reporting research results and findings obtained in the field of gastrointestinal surgery and covering a wide range of topics including biliary tract surgical procedures, biliopancreatic diversion, colectomy, esophagectomy, esophagostomy, pancreas transplantation, and pancreatectomy, etc.

**INDEXING/ABSTRACTING**

The WJGS is now abstracted and indexed in Science Citation Index Expanded (SCIE, also known as SciSearch®), Current Contents/Clinical Medicine, Journal Citation Reports/Science Edition, PubMed, PubMed Central, Reference Citation Analysis, China National Knowledge Infrastructure, China Science and Technology Journal Database, and Superstar Journals Database. The 2022 Edition of Journal Citation Reports® cites the 2021 impact factor (IF) for WJGS as 2.505; IF without journal self cites: 2.473; 5-year IF: 3.099; Journal Citation Indicator: 0.49; Ranking: 104 among 211 journals in surgery; Quartile category: Q2; Ranking: 81 among 93 journals in gastroenterology and hepatology; and Quartile category: Q4.

**RESPONSIBLE EDITORS FOR THIS ISSUE**

Production Editor: Rui-Rui Wu, Production Department Director: Xiang Li, Editorial Office Director: Jia-Ru Fan.

**NAME OF JOURNAL**

*World Journal of Gastrointestinal Surgery*

**ISSN**

ISSN 1948-9366 (online)

**LAUNCH DATE**

November 30, 2009

**FREQUENCY**

Monthly

**EDITORS-IN-CHIEF**

Peter Schemmer

**EDITORIAL BOARD MEMBERS**

<https://www.wjgnet.com/1948-9366/editorialboard.htm>

**PUBLICATION DATE**

May 27, 2023

**COPYRIGHT**

© 2023 Baishideng Publishing Group Inc

**INSTRUCTIONS TO AUTHORS**

<https://www.wjgnet.com/bpg/gerinfo/204>

**GUIDELINES FOR ETHICS DOCUMENTS**

<https://www.wjgnet.com/bpg/GerInfo/287>

**GUIDELINES FOR NON-NATIVE SPEAKERS OF ENGLISH**

<https://www.wjgnet.com/bpg/gerinfo/240>

**PUBLICATION ETHICS**

<https://www.wjgnet.com/bpg/GerInfo/288>

**PUBLICATION MISCONDUCT**

<https://www.wjgnet.com/bpg/gerinfo/208>

**ARTICLE PROCESSING CHARGE**

<https://www.wjgnet.com/bpg/gerinfo/242>

**STEPS FOR SUBMITTING MANUSCRIPTS**

<https://www.wjgnet.com/bpg/GerInfo/239>

**ONLINE SUBMISSION**

<https://www.f6publishing.com>



## Precise mapping of hilar cholangiocarcinoma with a skip lesion by SpyGlass cholangioscopy: A case report

Cheng-Han Chiang, Kuan-Chih Chen, Benedict Devereaux, Chen-Shuan Chung, Kuei-Chang Kuo, Chien Chu Lin, Cheng-Kuan Lin, Hsiu-Po Wang, Kuo-Hsin Chen

**Specialty type:** Gastroenterology and hepatology

**Provenance and peer review:** Unsolicited article; Externally peer reviewed.

**Peer-review model:** Single blind

**Peer-review report's scientific quality classification**

Grade A (Excellent): 0  
Grade B (Very good): B  
Grade C (Good): C  
Grade D (Fair): 0  
Grade E (Poor): 0

**P-Reviewer:** Kurita A, Japan;  
Zharikov YO, Russia

**Received:** November 25, 2022

**Peer-review started:** November 25, 2022

**First decision:** February 15, 2023

**Revised:** March 7, 2023

**Accepted:** April 7, 2023

**Article in press:** April 7, 2023

**Published online:** May 27, 2023



**Cheng-Han Chiang**, Division of Gastroenterology and Hepatology, Department of Internal Medicine, Xin-Tai General Hospital, New Taipei 242063, Taiwan

**Kuan-Chih Chen, Chen-Shuan Chung, Kuei-Chang Kuo, Chien Chu Lin, Cheng-Kuan Lin**, Department of Internal Medicine, Far Eastern Memorial Hospital, New Taipei 22060, Taiwan

**Benedict Devereaux**, Department of Gastroenterology, Royal Brisbane and Women's Hospital, Herston 4029, Queensland, Australia

**Hsiu-Po Wang**, Department of Internal Medicine, College of Medicine, National Taiwan University, Taipei 10002, Taiwan

**Kuo-Hsin Chen**, Department of Surgery, Far Eastern Memorial Hospital, New Taipei 22060, Taiwan

**Corresponding author:** Kuo-Hsin Chen, MD, Attending Doctor, Chief Doctor, Department of Surgery, Far Eastern Memorial Hospital, No. 21 Section 2, Nanya S. Road, Banqiao District, New Taipei 22060, Taiwan. [chen.kuohsin@gmail.com](mailto:chen.kuohsin@gmail.com)

### Abstract

#### BACKGROUND

Cholangiocarcinoma (CC) is a very aggressive cancer with a poor prognosis. As surgery is the only curative therapy, preoperative evaluation of the tumor extent is essential for surgical planning. Although high-quality image modalities such as computed tomography and magnetic resonance imaging have been used extensively in preoperative evaluation, the accuracy is low. To obtain precise localization of tumor spread arising from the hilar region preoperatively, the development of an acceptable imaging modality is still an unmet need.

#### CASE SUMMARY

A 52-year-old female presented to our emergency department with jaundice, abdominal pain, and fever. Initially, she was treated for cholangitis. Endoscopic retrograde cholangiopancreatography with the cholangiogram showed long segment filling defect in the common hepatic duct with dilatation of bilateral intrahepatic ducts. Transpapillary biopsy was performed, and the pathology suggested intraductal papillary neoplasm with high-grade dysplasia. After treatment of cholangitis, contrasted-enhanced computed tomography revealed a hilar lesion with undetermined Bismuth-Corlette classification. SpyGlass cholan-



gioscopy showed that the lesion involved the confluence of the common hepatic duct with one skip lesion in the posterior branch of the right intrahepatic duct, which was not detected by previous image modalities. The surgical plan was modified from extended left hepatectomy to extended right hepatectomy. The final diagnosis was hilar CC, pT2aN0M0. The patient has remained disease-free for more than 3 years.

### CONCLUSION

SpyGlass cholangioscopy may have a role in precision localization of hilar CC to provide surgeons with more information before the operation.

**Key Words:** Hilar cholangiocarcinoma; Jaundice; SpyGlass cholangioscopy; Bismuth-Corlette classification; Hepatectomy; Case report

©The Author(s) 2023. Published by Baishideng Publishing Group Inc. All rights reserved.

**Core Tip:** The precise localization of hilar cholangiocarcinoma (CC) is important for surgical planning. This case highlights the important role that SpyGlass cholangioscopy can have in precise localization. However, SpyGlass cholangioscopy may be difficult to perform during the first encounter because of obstruction. A two-step approach for obstructive jaundice caused by hilar CC was proposed: (1) Insertion of biliary plastic stents to relieve jaundice and dilate the stricture site; and (2) Removal of biliary plastic stents after relieving jaundice and subsequent examination of hilar CC involvement by SpyGlass cholangioscopy.

**Citation:** Chiang CH, Chen KC, Devereaux B, Chung CS, Kuo KC, Lin CC, Lin CK, Wang HP, Chen KH. Precise mapping of hilar cholangiocarcinoma with a skip lesion by SpyGlass cholangioscopy: A case report. *World J Gastrointest Surg* 2023; 15(5): 965-971

**URL:** <https://www.wjgnet.com/1948-9366/full/v15/i5/965.htm>

**DOI:** <https://dx.doi.org/10.4240/wjgs.v15.i5.965>

## INTRODUCTION

Since the first clinical use of SpyGlass cholangioscopy (Microvasive Endoscopy; Boston Scientific Corp, Natick, MA, United States) in 2007, numerous clinical studies of the SpyGlass system have been published[1]. However, no definite guidelines were created for the application of SpyGlass cholangioscopy in cholangiocarcinoma (CC) mapping. One study showed that the overall procedure success rate was 89%, and the yielding rate of device-assisted biopsy for histological examination was 88%[2]. Another study showed that the accuracy of SpyGlass visual impression for differentiating malignant from benign ductal lesions was 89%, and the targeted biopsy accuracy rate was 82%[3].

Many patients diagnosed with early stage hilar CC who accepted radical left or right extended hepatectomy have a high recurrence rate (up to 52% 3 years after R0 resection)[4]. Intraepithelial neoplasia skip lesions and intraductal papillary neoplasm in the bile duct or indeterminate classification of CC could lead to the high recurrence rate[5,6]. The advent of SpyGlass cholangioscopy with high resolution images of the bile duct may provide a role in the precise localization of hilar CC. This will lead to more accurate and precise surgical planning.

Herein, we reported a case of hilar CC that was precisely mapped by SpyGlass cholangioscopy, which detected an intrahepatic duct (IHD) skip lesion. In addition, we demonstrated the potential benefit of preoperative SpyGlass cholangioscopy in the field of precise localization of hilar CC to guide the surgical plan.

## CASE PRESENTATION

### Chief complaints

A 52-year-old female presented with acute onset right upper quadrant abdominal pain for 1 d.

### History of present illness

Three days prior to presentation, the patient experienced progressive tea-colored urine and generalized yellowish skin with an itching sensation. She had a fever of 38 °C.

**History of past illness**

The patient denied any past illness.

**Personal and family history**

The patient denied any personal and family history.

**Physical examination**

Physical examination showed right upper quadrant tenderness without rebound pain.

**Laboratory examinations**

The biochemistry test revealed hyperbilirubinemia (12.5 mg/dL; normal range: 0.2-1.5 mg/dL).

**Imaging examinations**

Subsequent abdominal sonography revealed acute calculous cholecystitis, suspected common bile duct (CBD) stone with dilated CBD, and bilateral IHDs (Figure 1A). Ultrasound-guided percutaneous gallbladder drainage and endoscopic retrograde cholangiopancreatography (ERCP) were performed to relieve the patient's symptoms. The cholangiogram revealed a long filling defect from the proximal CBD to the common hepatic duct (CHD) confluence (Figure 1B). Moreover, some tissue fragments were extracted *via* balloon lithotripsy during the ERCP exam and sent for pathological examination. In addition, brushing cytology was performed. Endoscopic retrograde biliary drainage was placed into the right IHD to relieve the patient's jaundice symptoms. Furthermore, subsequent contrast-enhanced computed tomography revealed similar findings as ERCP (Figure 1C). Later, left percutaneous transhepatic cholangiography drainage was performed to relieve unresolved jaundice after the endoscopic retrograde biliary drainage (Figure 1D). The patient's hyperbilirubinemia was resolved gradually. The final pathology of the CHD lesion showed intraductal papillary neoplasm, with high-grade dysplasia.

---

**FINAL DIAGNOSIS**

---

CC, pT2aN0.

---

**TREATMENT**

---

After serial work-up and management, a general surgeon was consulted for the curative surgery. Initially, extended left hepatectomy was planned for the patient because the patient's right lobe was larger than the left lobe. This strategy would preserve more liver without preoperative portal vein embolization.

However, the surgical plan was modified after the SpyGlass cholangioscopy, which revealed an intraductal lesion from the CHD to the margin of bifurcation of the IHDs (Figure 2A). A skip lesion in the right posterior branch of the bile duct (2 cm proximally away from bifurcation of the CHD) (Figure 2B and C). The cholangioscopy showed normal appearance of the mucosa in the left proximal IHD (Figure 2D). Based on these findings, the surgeon changed the initial surgical plan of extended left hepatectomy (LH) to extended right hepatectomy (RH).

Before the operation, embolization of the right portal vein was performed because the volume of the left lobe of the liver would not be adequate after extended RH. Atrophy of the right lobe of the liver and enlargement of the left lobe of the liver was confirmed 4 wk later by imaging with indocyanine green (retention ratio: 6%; normal range: < 10 %). Laparoscopic extended RH was performed uneventfully 8 wk after portal vein embolization. The surgical specimen showed one skip lesion in the right posterior branch hepatic duct, which was compatible with the SpyGlass cholangioscopy findings (Figure 3A, arrow). The histology showed well differentiated CC that invaded beyond the wall of the bile duct to the surrounding adipose tissue (Figure 3B).

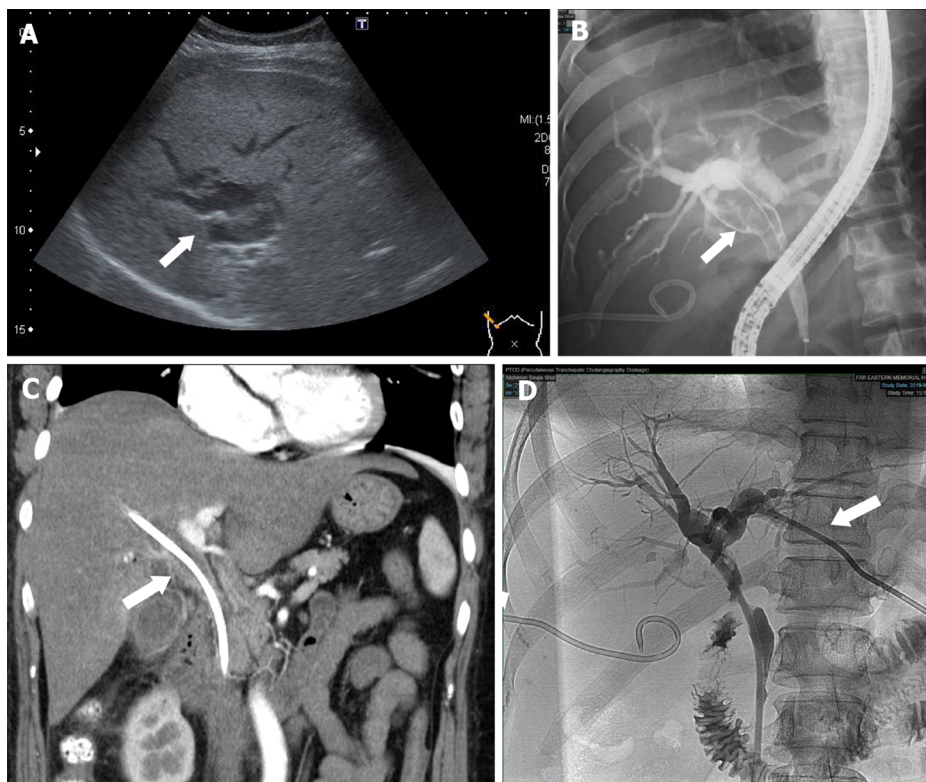
---

**OUTCOME AND FOLLOW-UP**

---

During the follow-up period of more than 3 years, the patient's symptoms resolved and have not recurred. Liver triphasic computed tomography confirmed that the patient has remained disease free.





DOI: 10.4240/wjgs.v15.i5.965 Copyright ©The Author(s) 2023.

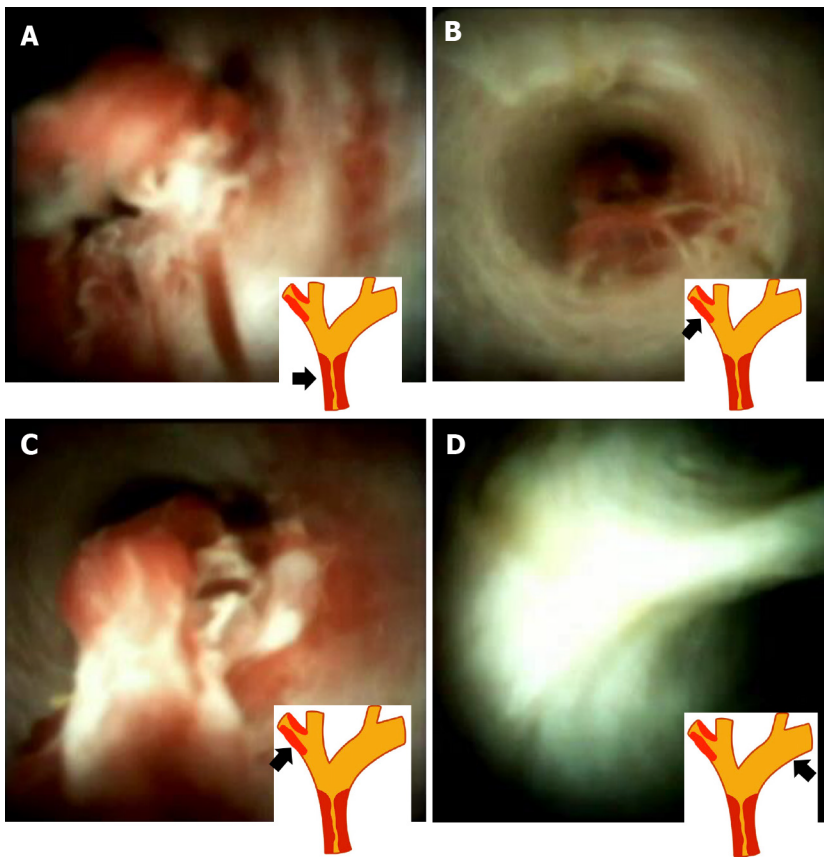
**Figure 1** Imaging results. A: Abdominal sonography showed dilated intrahepatic ducts (arrow); B: The cholangiogram revealed a long filling defect (arrow) from the proximal common bile duct (CBD) to the common hepatic duct; C: Contrast-enhanced computed tomography also showed soft tissue density (arrow) from the proximal CBD to the common hepatic duct; D: Percutaneous transhepatic cholangiography drainage (arrow) was performed on the left intrahepatic duct to alleviate jaundice.

## DISCUSSION

CC is the second most common hepatic malignancy, following hepatocellular carcinoma. Hilar CC is the most common type, accounting for 50%-60% of CC cases[6]. The only curative treatment is extended semihepatectomy with hilar resection. Therefore, choosing left or right extended hepatectomy is the most crucial issue for surgeons. The choice depends on the precise localization of the hilar lesion preoperatively. Before 2007, ERCP plus triphasic dynamic computed tomography or magnetic resonance cholangiopancreatography were the only methods to identify the location of the lesion and perform preoperative mapping[7,8].

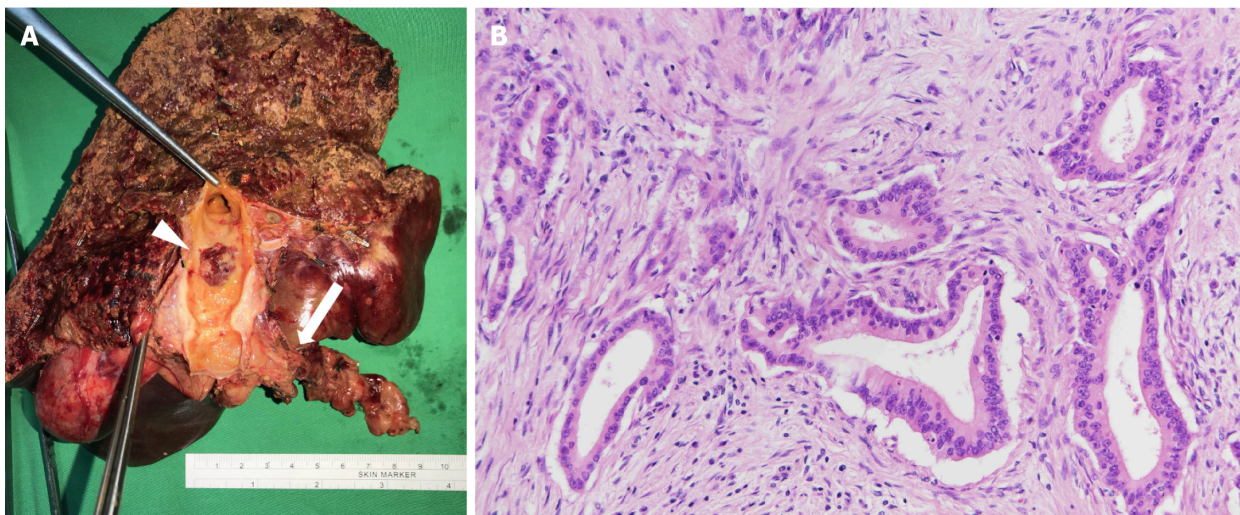
Since the SpyGlass cholangioscopy system first appeared in 2007, many studies have shown its diagnostic and therapeutic value over indeterminate biliary strictures[9-11]. However, no studies have focused on the preoperative mapping of hilar CC. According to the previous studies and case series, the high recurrence rate of hilar CC may result from skip lesions or residual intraductal papillary neoplasm of the bile duct on the contralateral IHD[4]. For this case, a residual intraductal papillary neoplasm skip lesion in the right posterior branch of the bile duct was detected by SpyGlass cholangioscopy, which was valuable information for surgical planning. Typically for Bismuth type I or type II hilar CC, extended LH is preferred because extended LH and extended RH with en bloc resection have shown similar long-term survival. Extended LH hilar en bloc resections are more feasible and safer perioperatively and postoperatively[12,13]. However, because more precise information of the tumor extent was detected by SpyGlass cholangioscopy, the surgical plan was changed for our patient.

Based on the experience from this case, a two-step approach for obstructive jaundice caused by hilar CC was proposed: (1) Insertion of biliary plastic stents to relieve jaundice and to dilate the stricture site; and (2) Removal of biliary plastic stents after jaundice is resolved and examination of the hilar CC extent by SpyGlass cholangioscopy. Notably, cross-sectional images were still required for evaluation of nodal involvement and distal metastases. In addition, for patients with periductal-infiltrating type CC, SpyGlass cholangioscopy may have a limited role. Thus, combination of SpyGlass cholangioscopy, cross-sectional imaging, and cholangiogram may provide more precise information of hilar CC localization and staging, which will provide the most suitable treatment for patients.



DOI: 10.4240/wjgs.v15.i5.965 Copyright ©The Author(s) 2023.

**Figure 2 SpyGlass cholangioscopy.** A: SpyGlass cholangioscopy showed one intraductal mass that involved bifurcation of the intrahepatic ducts; B: The far view of the skip lesion in the right posterior branch of the bile duct; C: The near view of the skip lesion, which was 2 cm proximally away from bifurcation of the common hepatic duct; D: Normal appearance of the mucosa in the proximal left intrahepatic duct.



DOI: 10.4240/wjgs.v15.i5.965 Copyright ©The Author(s) 2023.

**Figure 3 The macroscopic and microscopic images of the lesions.** A: The main cholangiocarcinoma lesion (arrow) and skip lesion (arrowhead); B: Pathology of cholangiocarcinoma (hematoxylin and eosin, × 200 magnification).

## CONCLUSION

SpyGlass cholangioscopy may have an important role in the precise localization of hilar CC for surgical planning. However, a larger scale study is warranted.

## FOOTNOTES

**Author contributions:** Chiang CH and Chen KC contributed equally to this work; Chiang CH and Chen KC wrote the manuscript; Chen KH performed the surgery and revised the manuscript; Chiang CH, Chen KC, Devereaux B, Lin CC, and Chung CS performed the SpyGlass cholangioscopy; Kuo KC and Lin CK contributed to the literature review; Wang HP provided instruction of the procedure; All authors have read and approved the final manuscript.

**Informed consent statement:** Informed written consent was obtained from the patients for the publication of this report and any accompanying images.

**Conflict-of-interest statement:** All the authors report no relevant conflicts of interest for this article.

**CARE Checklist (2016) statement:** The authors have read the CARE Checklist (2016), and the manuscript was prepared and revised according to the CARE Checklist (2016).

**Open-Access:** This article is an open-access article that was selected by an in-house editor and fully peer-reviewed by external reviewers. It is distributed in accordance with the Creative Commons Attribution NonCommercial (CC BY-NC 4.0) license, which permits others to distribute, remix, adapt, build upon this work non-commercially, and license their derivative works on different terms, provided the original work is properly cited and the use is non-commercial. See: <https://creativecommons.org/licenses/by-nc/4.0/>

**Country/Territory of origin:** Taiwan

**ORCID number:** Cheng-Han Chiang 0000-0003-1538-6666; Kuan-Chih Chen 0000-0002-6526-8097; Benedict Devereaux 0000-0003-1795-5690; Chen-Shuan Chung 0000-0001-9224-4958; Kuei-Chang Kuo 0000-0002-6964-7879; Chien Chu Lin 0000-0001-6283-7226; Cheng-Kuan Lin 0000-0002-0446-3606; Hsiu-Po Wang 0000-0002-7741-9315; Kuo-Hsin Chen 0000-0003-3947-1400.

**S-Editor:** Fan JR

**L-Editor:** A

**P-Editor:** Zhang XD

## REFERENCES

- Chen YK, Pleskow DK. SpyGlass single-operator peroral cholangiopancreatography system for the diagnosis and therapy of bile-duct disorders: a clinical feasibility study (with video). *Gastrointest Endosc* 2007; **65**: 832-841 [PMID: 17466202 DOI: 10.1016/j.gie.2007.01.025]
- Chen YK, Parsi MA, Binmoeller KF, Hawes RH, Pleskow DK, Slivka A, Haluszka O, Petersen BT, Sherman S, Devière J, Meisner S, Stevens PD, Costamagna G, Ponchon T, Peetermans JA, Neuhaus H. Single-operator cholangioscopy in patients requiring evaluation of bile duct disease or therapy of biliary stones (with videos). *Gastrointest Endosc* 2011; **74**: 805-814 [PMID: 21762903 DOI: 10.1016/j.gie.2011.04.016]
- Ramchandani M, Reddy DN, Gupta R, Lakhtakia S, Tandan M, Darisetty S, Sekaran A, Rao GV. Role of single-operator peroral cholangioscopy in the diagnosis of indeterminate biliary lesions: a single-center, prospective study. *Gastrointest Endosc* 2011; **74**: 511-519 [PMID: 21737076 DOI: 10.1016/j.gie.2011.04.034]
- Kobayashi A, Miwa S, Nakata T, Miyagawa S. Disease recurrence patterns after R0 resection of hilar cholangiocarcinoma. *Br J Surg* 2010; **97**: 56-64 [PMID: 19937985 DOI: 10.1002/bjs.6788]
- Geramizadeh B. Precursor Lesions of Cholangiocarcinoma: A Clinicopathologic Review. *Clin Pathol* 2020; **13**: 2632010X20925045 [PMID: 32596664 DOI: 10.1177/2632010X20925045]
- Banales JM, Cardinale V, Carpino G, Marziani M, Andersen JB, Invernizzi P, Lind GE, Folseraas T, Forbes SJ, Fouassier L, Geier A, Calvisi DF, Mertens JC, Trauner M, Benedetti A, Maroni L, Vaquero J, Macias RI, Raggi C, Perugorria MJ, Gaudio E, Boberg KM, Marin JJ, Alvaro D. Expert consensus document: Cholangiocarcinoma: current knowledge and future perspectives consensus statement from the European Network for the Study of Cholangiocarcinoma (ENS-CCA). *Nat Rev Gastroenterol Hepatol* 2016; **13**: 261-280 [PMID: 27095655 DOI: 10.1038/nrgastro.2016.51]
- Hemming AW, Reed AI, Fujita S, Foley DP, Howard RJ. Surgical management of hilar cholangiocarcinoma. *Ann Surg* 2005; **241**: 693-9; discussion 699 [PMID: 15849505 DOI: 10.1097/01.sla.0000160701.38945.82]
- Brandi G, Venturi M, Pantaleo MA, Ercolani G, GICO. Cholangiocarcinoma: Current opinion on clinical practice diagnostic and therapeutic algorithms: A review of the literature and a long-standing experience of a referral center. *Dig Liver Dis* 2016; **48**: 231-241 [PMID: 26769568 DOI: 10.1016/j.dld.2015.11.017]
- Tieu AH, Kumbhari V, Jakhete N, Onyimba F, Patel Y, Shin EJ, Li Z. Diagnostic and therapeutic utility of SpyGlass® peroral cholangioscopy in intrahepatic biliary disease: single-center, retrospective, cohort study. *Dig Endosc* 2015; **27**: 479-485 [PMID: 25394296 DOI: 10.1111/den.12405]
- Lenze F, Bokemeyer A, Gross D, Nowacki T, Bettenworth D, Ullerich H. Safety, diagnostic accuracy and therapeutic efficacy of digital single-operator cholangioscopy. *United European Gastroenterol J* 2018; **6**: 902-909 [PMID: 30023068 DOI: 10.1177/2050640618764943]
- Pereira P, Vilas-Boas F, Peixoto A, Andrade P, Lopes J, Macedo G. How SpyGlass™ May Impact Endoscopic Retrograde Cholangiopancreatography Practice and Patient Management. *GE Port J Gastroenterol* 2018; **25**: 132-137

- [PMID: 29761149 DOI: 10.1159/000481859]
- 12 **Kovalenko YA**, Zharikov YO, Konchina NA, Gurmikov BN, Marinova LA, Zhao AV. Perihilar cholangiocarcinoma: A different concept for radical resection. *Surg Oncol* 2020; **33**: 270-275 [PMID: 32561092 DOI: 10.1016/j.suronc.2020.02.013]
- 13 **Bednarsch J**, Czigany Z, Lurje I, Tacke F, Strnad P, Ulmer TF, Gaisa NT, Bruners P, Neumann UP, Lurje G. Left- vs right-sided hepatectomy with hilar en-bloc resection in perihilar cholangiocarcinoma. *HPB (Oxford)* 2020; **22**: 437-444 [PMID: 31383591 DOI: 10.1016/j.hpb.2019.07.003]





Published by **Baishideng Publishing Group Inc**  
7041 Koll Center Parkway, Suite 160, Pleasanton, CA 94566, USA

**Telephone:** +1-925-3991568

**E-mail:** [bpgoffice@wjgnet.com](mailto:bpgoffice@wjgnet.com)

**Help Desk:** <https://www.f6publishing.com/helpdesk>

<https://www.wjgnet.com>

