

# World Journal of *Gastrointestinal Surgery*

*World J Gastrointest Surg* 2023 September 27; 15(9): 1841-2097



## Contents

Monthly Volume 15 Number 9 September 27, 2023

## REVIEW

- 1841 Indocyanine green dye and its application in gastrointestinal surgery: The future is bright green  
*Lim ZY, Mohan S, Balasubramaniam S, Ahmed S, Siew CCH, Shelat VG*
- 1858 Hepatic ischemia-reperfusion syndrome and its effect on the cardiovascular system: The role of treprostinil, a synthetic prostacyclin analog  
*Mouratidou C, Pavlidis ET, Katsanos G, Kotoulas SC, Mouloudi E, Tsoulfas G, Galanis IN, Pavlidis TE*

## MINIREVIEWS

- 1871 Advances and challenges of gastrostomy insertion in children  
*Bitar R, Azaz A, Rawat D, Hobeldin M, Miqdady M, Abdelsalam S*
- 1879 Surgical decompression for the management of abdominal compartment syndrome with severe acute pancreatitis: A narrative review  
*Nasa P, Chanchalani G, Juneja D, Malbrain ML*

## ORIGINAL ARTICLE

## Retrospective Cohort Study

- 1892 Excision of malignant and pre-malignant rectal lesions by transanal endoscopic microsurgery in patients under 50 years of age  
*Shilo Yaacobi D, Berger Y, Shaltiel T, Bekhor EY, Khalifa M, Issa N*
- 1901 Safety and feasibility of modified duct-to-mucosa pancreaticojejunostomy during pancreatoduodenectomy: A retrospective cohort study  
*Sun Y, Yu XF, Yao H, Xu S, Ma YQ, Chai C*

## Retrospective Study

- 1910 Application of early enteral nutrition nursing based on enhanced recovery after surgery theory in patients with digestive surgery  
*Shao YR, Ke X, Luo LH, Xu JD, Xu LQ*
- 1919 Autologous bone marrow infusion *via* portal vein combined with splenectomy for decompensated liver cirrhosis: A retrospective study  
*Liu BC, Cheng MR, Lang L, Li L, Si YH, Li AJ, Xu Q, Zhang H*
- 1932 Application of multidisciplinary collaborative nursing with family care for enhanced recovery after surgery in children with inguinal hernia  
*Wang XM, Hou Q*
- 1941 Preoperative and postoperative complications as risk factors for delayed gastric emptying following pancreaticoduodenectomy: A single-center retrospective study  
*Xie FL, Ren LJ, Xu WD, Xu TL, Ge XQ, Li W, Ge XM, Zhou WK, Li K, Zhang YH, Wang Z*

- 1950** Efficacy of ileus tube combined with meglumine diatrizoate in treating postoperative inflammatory bowel obstruction after surgery  
*Yang W, Pu J*
- 1959** Effect of internet multiple linkage mode-based extended care combined with in-hospital comfort care on colorectal cancer patients undergoing colostomy  
*Xu L, Zhou MZ*
- 1969** Short- and long-term results of open *vs* laparoscopic multisegmental resection and anastomosis for synchronous colorectal cancer located in separate segments  
*Quan JC, Zhou XJ, Mei SW, Liu JG, Qiu WL, Zhang JZ, Li B, Li YG, Wang XS, Chang H, Tang JQ*
- 1978** Prediction model of stress ulcer after laparoscopic surgery for colorectal cancer established by machine learning algorithm  
*Yu DM, Wu CX, Sun JY, Xue H, Yuwen Z, Feng JX*
- 1986** Effect of two surgical approaches on the lung function and prognosis of patients with combined esophago-gastric cancer  
*Sun CB, Han XQ, Wang H, Zhang YX, Wang MC, Liu YN*
- 1995** Clinical significance of serum oxidative stress and serum uric acid levels before surgery for hepatitis B-related liver cancer  
*Hou JX, Wang YB, Wu J, Ding GS, Wu Y, Wei LH, Wang F, Zhang ZM*
- 2003** Multifactor analysis of the technique in total laparoscopic gastric cancer  
*Shi JK, Wang B, Zhang XS, Lv P, Chen YL, Ren SY*
- 2012** Value of enhanced computed tomography in differentiating small mesenchymal tumours of the gastrointestinal from smooth muscle tumours  
*Nie WJ, Jing Z, Hua M*
- 2021** Risk factors for myocardial injury during living donor liver transplantation in pediatric patients with biliary atresia  
*Wu YL, Li TY, Gong XY, Che L, Sheng MW, Yu WL, Weng YQ*

**Observational Study**

- 2032** Comparative detection of syndecan-2 methylation in preoperative and postoperative stool DNA in patients with colorectal cancer  
*Song JH, Oh TJ, An S, Lee KH, Kim JY, Kim JS*

**Prospective Study**

- 2042** Preoperative prediction of microvascular invasion in hepatocellular carcinoma using ultrasound features including elasticity  
*Jiang D, Qian Y, Tan BB, Zhu XL, Dong H, Qian R*
- 2052** Quantitative evaluation of colorectal tumour vasculature using contrast-enhanced ultrasound: Correlation with angiogenesis and prognostic significance  
*Li MH, Li WW, He L, Li JF, Zhang SY*

## CASE REPORT

- 2063** Laparoscopy-assisted gastrectomy for advanced gastric cancer patients with situs inversus totalis: Two case reports and review of literature  
*Liu HB, Cai XP, Lu Z, Xiong B, Peng CW*
- 2074** Acute flare of systemic lupus erythematosus with extensive gastrointestinal involvement: A case report and review of literature  
*Huang H, Li P, Zhang D, Zhang MX, Yu K*
- 2083** Surgical management of gallstone ileus after one anastomosis gastric bypass: A case report  
*El Feghali E, Akel R, Chamaa B, Kazan D, Chakhtoura G*
- 2089** Dual transformation therapy for giant hepatocellular carcinoma: Two case reports and review of literature  
*Gao Q, Zhu GZ, Han CY, Ye XP, Huang HS, Mo ST, Peng T*

**ABOUT COVER**

Editorial Board Member of *World Journal of Gastrointestinal Surgery*, Sung Uk Bae, MD, PhD, Associate Professor, Department of Surgery, Keimyung University Dongsan Hospital, Daegu 42601, South Korea.  
sabiston0000@hanmail.net

**AIMS AND SCOPE**

The primary aim of *World Journal of Gastrointestinal Surgery* (WJGS, *World J Gastrointest Surg*) is to provide scholars and readers from various fields of gastrointestinal surgery with a platform to publish high-quality basic and clinical research articles and communicate their research findings online.

WJGS mainly publishes articles reporting research results and findings obtained in the field of gastrointestinal surgery and covering a wide range of topics including biliary tract surgical procedures, biliopancreatic diversion, colectomy, esophagectomy, esophagostomy, pancreas transplantation, and pancreatectomy, etc.

**INDEXING/ABSTRACTING**

The WJGS is now abstracted and indexed in Science Citation Index Expanded (SCIE, also known as SciSearch®), Current Contents/Clinical Medicine, Journal Citation Reports/Science Edition, PubMed, PubMed Central, Reference Citation Analysis, China National Knowledge Infrastructure, China Science and Technology Journal Database, and Superstar Journals Database. The 2023 Edition of Journal Citation Reports® cites the 2022 impact factor (IF) for WJGS as 2.0; IF without journal self cites: 1.9; 5-year IF: 2.2; Journal Citation Indicator: 0.52; Ranking: 113 among 212 journals in surgery; Quartile category: Q3; Ranking: 81 among 93 journals in gastroenterology and hepatology; and Quartile category: Q4.

**RESPONSIBLE EDITORS FOR THIS ISSUE**

Production Editor: Rui-Rui Wu, Production Department Director: Xiang Li, Editorial Office Director: Jia-Ru Fan.

**NAME OF JOURNAL**

*World Journal of Gastrointestinal Surgery*

**ISSN**

ISSN 1948-9366 (online)

**LAUNCH DATE**

November 30, 2009

**FREQUENCY**

Monthly

**EDITORS-IN-CHIEF**

Peter Schemmer

**EDITORIAL BOARD MEMBERS**

<https://www.wjgnet.com/1948-9366/editorialboard.htm>

**PUBLICATION DATE**

September 27, 2023

**COPYRIGHT**

© 2023 Baishideng Publishing Group Inc

**INSTRUCTIONS TO AUTHORS**

<https://www.wjgnet.com/bpg/gerinfo/204>

**GUIDELINES FOR ETHICS DOCUMENTS**

<https://www.wjgnet.com/bpg/GerInfo/287>

**GUIDELINES FOR NON-NATIVE SPEAKERS OF ENGLISH**

<https://www.wjgnet.com/bpg/gerinfo/240>

**PUBLICATION ETHICS**

<https://www.wjgnet.com/bpg/GerInfo/288>

**PUBLICATION MISCONDUCT**

<https://www.wjgnet.com/bpg/gerinfo/208>

**ARTICLE PROCESSING CHARGE**

<https://www.wjgnet.com/bpg/gerinfo/242>

**STEPS FOR SUBMITTING MANUSCRIPTS**

<https://www.wjgnet.com/bpg/GerInfo/239>

**ONLINE SUBMISSION**

<https://www.f6publishing.com>



Retrospective Study

# Preoperative and postoperative complications as risk factors for delayed gastric emptying following pancreaticoduodenectomy: A single-center retrospective study

Fang-Liang Xie, Li-Jun Ren, Wei-Dong Xu, Tong-Lei Xu, Xia-Qing Ge, Wei Li, Xu-Ming Ge, Wen-Kai Zhou, Kai Li, Yun-Hai Zhang, Zhong Wang

**Specialty type:** Gastroenterology and hepatology

**Provenance and peer review:**

Unsolicited article; Externally peer reviewed.

**Peer-review model:** Single blind

**Peer-review report's scientific quality classification**

Grade A (Excellent): 0  
Grade B (Very good): B  
Grade C (Good): C  
Grade D (Fair): 0  
Grade E (Poor): 0

**P-Reviewer:** Rastogi A, India;  
Yoshikawa K, Japan

**Received:** May 19, 2023

**Peer-review started:** May 19, 2023

**First decision:** June 1, 2023

**Revised:** June 21, 2023

**Accepted:** July 18, 2023

**Article in press:** July 18, 2023

**Published online:** September 27, 2023



**Fang-Liang Xie, Wei-Dong Xu, Tong-Lei Xu, Xia-Qing Ge, Wei Li, Xu-Ming Ge, Wen-Kai Zhou, Kai Li, Zhong Wang,** Department of Hepatobiliary Surgery, Xuzhou Medical University Affiliated Hospital of Lianyungang (The First People's Hospital of Lianyungang), Lianyungang 222061, Jiangsu Province, China

**Li-Jun Ren,** Operating Theatre, Xuzhou Medical University Affiliated Hospital of Lianyungang (The First People's Hospital of Lianyungang), Lianyungang 222061, Jiangsu Province, China

**Yun-Hai Zhang,** Department of Pain, Xuzhou Medical University Affiliated Hospital of Lianyungang (The First People's Hospital of Lianyungang), Lianyungang 222061, Jiangsu Province, China

**Corresponding author:** Zhong Wang, Doctor, Doctor, Department of Hepatobiliary Surgery, Xuzhou Medical University Affiliated Hospital of Lianyungang (The First People's Hospital of Lianyungang), No. 6 Zhenhua East Road, Haizhou District, Lianyungang 222061, Jiangsu Province, China. [wanglyggdwk@126.com](mailto:wanglyggdwk@126.com)

## Abstract

### BACKGROUND

Mortality rates after pancreaticoduodenectomy (PD) have significantly decreased in specialized centers. However, postoperative morbidity, particularly delayed gastric emptying (DGE), remains the most frequent complication following PD.

### AIM

To identify risk factors associated with DGE after the PD procedure.

### METHODS

In this retrospective, cross-sectional study, clinical data were collected from 114 patients who underwent PD between January 2015 and June 2018. Demographic factors, pre- and perioperative characteristics, and surgical complications were assessed. Univariate and multivariate analyses were performed to identify risk factors for post-PD DGE.

### RESULTS

The study included 66 males (57.9%) and 48 females (42.1%), aged 33-83 years



(mean: 62.5), with a male-to-female ratio of approximately 1.4:1. There were 63 cases (55.3%) of PD and 51 cases (44.7%) of pylorus-preserving pancreatoduodenectomy. Among the 114 patients who underwent PD, 33 (28.9%) developed postoperative DGE. Univariate analysis revealed significant differences in four of the 14 clinical indexes observed: pylorus preservation, retrocolonic anastomosis, postoperative abdominal complications, and early postoperative albumin (ALB). Logistic regression analysis further identified postoperative abdominal complications [odds ratio (OR) = 4.768,  $P = 0.002$ ], preoperative systemic diseases (OR = 2.516,  $P = 0.049$ ), and early postoperative ALB (OR = 1.195,  $P = 0.003$ ) as significant risk factors.

## CONCLUSION

Postoperative severe abdominal complications, preoperative systemic diseases, and early postoperative ALB are identified as risk factors for post-PD DGE.

**Key Words:** Delayed gastric emptying; Postoperation; Pancreaticoduodenectomy; Treatment

©The Author(s) 2023. Published by Baishideng Publishing Group Inc. All rights reserved.

**Core Tip:** This study enrolled 114 patients with pancreaticoduodenectomy (PD) over a recent 5-year period at a single center with a short time span and detailed and reliable data. To investigate the risk factors for delayed gastric emptying after PD. We have draw the conclusion that postoperative severe abdominal complications, preoperative systemic diseases and early postoperative albumin are risk factors for post-PD delayed gastric emptying.

**Citation:** Xie FL, Ren LJ, Xu WD, Xu TL, Ge XQ, Li W, Ge XM, Zhou WK, Li K, Zhang YH, Wang Z. Preoperative and postoperative complications as risk factors for delayed gastric emptying following pancreaticoduodenectomy: A single-center retrospective study. *World J Gastrointest Surg* 2023; 15(9): 1941-1949

**URL:** <https://www.wjgnet.com/1948-9366/full/v15/i9/1941.htm>

**DOI:** <https://dx.doi.org/10.4240/wjgs.v15.i9.1941>

## INTRODUCTION

Pancreaticoduodenectomy (PD) is a commonly performed surgical procedure for treating tumors in the head of the pancreas, the lower part of the common bile duct, and the ampullary region of the duodenum. It involves the resection of the pancreatic head, lower portion of the common bile duct, gallbladder, distal stomach, duodenum, and part of the jejunum[1]. With medico-technological advancements, PD has become a standardized surgical approach for treating pancreatic head cancer and periampullary benign and malignant tumors[2], decreasing serious postoperative complications such as severe pancreatic leakage, bile leakage, and massive hemorrhage[3]. However, the underlying mechanism of delayed gastric emptying (DGE), one of its complications, remains unknown, presenting a challenge for clinicians in its treatment[4]. Despite advancements in surgical techniques and perioperative management, which have reduced the occurrence of severe postoperative complications such as severe pancreatic leakage, bile leakage, and massive hemorrhage, some complications, particularly DGE, continue to be prevalent among those who underwent PD, with no known cause or effective treatment[5].

DGE is a syndrome characterized by a gastric motility disorder and gastric emptying disturbances, primarily caused by non-mechanical obstruction factors resulting from abdominal surgery[6]. The cause of DGE has remained unknown, resulting in poor treatment outcomes and prolonged hospital stays, posing challenges for clinicians. Evidence indicates that DGE is a functional gastric emptying disorder without organic lesions[7]. The incidence of DGE has been consistently high for many decades, with a study conducted by the International Study Group of Pancreatic Surgery (ISGPS) in 2007 reporting an incidence ranging from 19% to 57% following pancreatic surgery[5]. A recent foreign research review discovered that the incidence of DGE ranges from 3.2% to 59%, with 3234 (27.7%) out of 11669 patients experiencing post-PD DGE[8]. In recent years, numerous pancreas centers worldwide have conducted extensive studies and discussions on the factors inducing DGE after PD[9]; however, a definite and convincing conclusion is yet to be reached. Determining whether the cause lies in surgical techniques, perioperative management issues, or other factors is crucial in guiding treatment decisions.

Regarding treatment, the specific pathogenesis of DGE remains uncharacterized[5] without an established treatment plan for DGE, resulting in undesirable effects with various treatment approaches. Consequently, comprehensive measures have been generically adopted. For patients with postoperative DGE, the routine treatment plan of our team is to correct hypoproteinemia (HP) and electrolyte imbalances, maintain stable blood sugar levels, and utilize methods such as intramuscular metoclopramide, acupuncture, gastroscopy-guided jejunal nutrition tube placement, and occasional intravenous erythromycin infusions[10-12]. However, past treatment attempts using these approaches have failed to improve gastric motility significantly or indicate the exact timing at which gastric function recovers in patients.

Therefore, this study aims to thoroughly investigate the risk factors associated with DGE and introduce a novel treatment approach, as detailed below.

## MATERIALS AND METHODS

### Baseline data

The clinical data of 114 patients who underwent PD between January 2015 and June 2018 at The First People's Hospital of Lianyungang were collected. Inclusion criteria: (1) Patients who underwent PD; (2) Patients who met the diagnostic criteria for DGE following PD; (3) Patients without cerebrovascular diseases who could tolerate surgery; (4) Patients with no history of abdominal surgery; and (5) Patients with complete clinical data. Exclusion criteria: (1) Patients with incomplete clinical data; (2) Patients with pre-existing gastrointestinal obstructive diseases; (3) Patients with Grade A DGE; (4) Patients with postoperative pulmonary infection; and (5) Patients undergoing re-operation due to postoperative complications.

### Surgical methods

All the included patients underwent either PD or pylorus-preserving pancreaticoduodenectomy (PPPD) under general anesthesia. The tumor was resected through a median abdominal incision, and lymph nodes were dissected from the pancreatic head, the lower part of the common bile duct, the gallbladder, the upper jejunum, the duodenum, and portions of the distal stomach. All digestive tract reconstructions were performed using the Child procedure. Anastomosis was performed as follows: Firstly, pancreaticojejunostomy was performed using a modified pancreatic duct-jejunal mucosa-to-mucosa one-layer anastomosis or pancreas-jejunal invagination anastomosis; secondly, the gastrointestinal anastomosis was performed by a full-thickness continuous absorbable suture with absorbable threads; finally, end-to-side gastrojejunostomy (for PD) or duodenal-jejunal end-to-side anastomosis (for PPPD) was adopted for gastrointestinal anastomosis. The gastrointestinal anastomosis stoma was located either in the anterior or posterior colon. The stomach and some jejunal feeding tubes were routinely placed during the operation, and two abdominal drainage tubes were inserted postoperatively.

### Diagnostic criteria for DGE

The current diagnosis of DGE after pancreatic surgery follows the requirements recommended by the ISGPS in 2007. Gastroparesis (GP) can be diagnosed if the following conditions are met: (1) Continuous gastrointestinal decompression with a daily drainage volume of > 500 mL for > 3 d after pancreatic surgery; (2) Inability to consume solid food within 7 days after the operation; (3) Vomiting or bloating; and (4) Requirement for gastrointestinal excitomotors. When considering these symptoms, it is essential to rule out mechanical obstruction of the gastrointestinal outflow tract. ISGPS classifies DGE after pancreatic surgery into grades A, B, and C based on the severity. Grade A refers to the retention of the gastric tube for 4-7 d after the operation or the inability to consume solid food on the 7<sup>th</sup> postoperative day; grade B refers to the retention of gastric tubes for 8-14 d after the operation, or the inability to consume a solid diet on the 14<sup>th</sup> postoperative day; grade C corresponds to the postoperative gastric tube retention for > 14 d, significantly impacting patient recovery, or the inability to consume a solid diet even after 21 postoperative days. Patients with grades B and C, which have a significant impact on postoperative recovery, were included in the study[5].

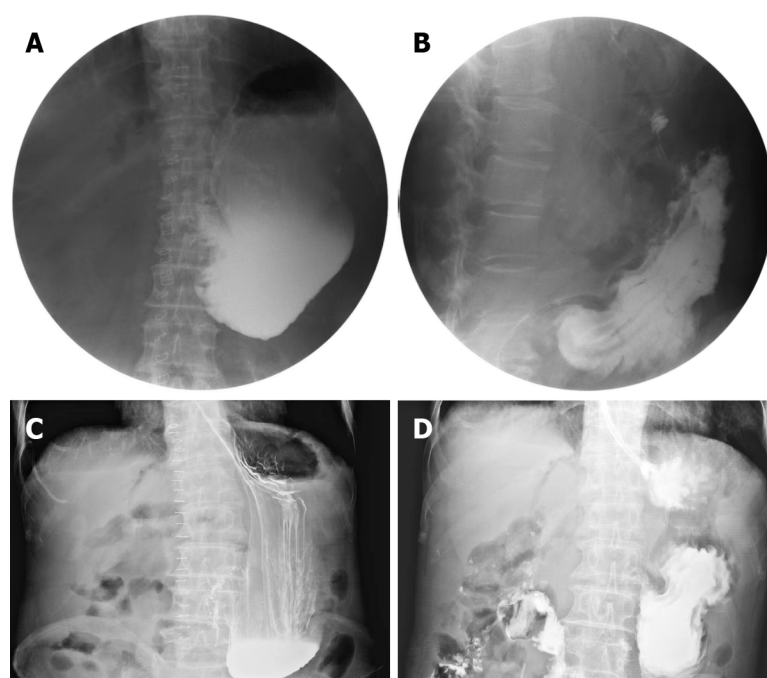
### Diagnostic criteria for complications

According to the Consensus on the Diagnosis, Treatment, and Prevention of Common Complications in Pancreatic Surgery (2017)[13], formulated by the Pancreatic Surgery Group of the Chinese Medical Association, postoperative complications such as pancreatic fistula, biliary fistula, postoperative bleeding, and chylous fistula were assessed. A pancreatic fistula is an abnormal channel between the pancreatic ductal epithelium and other epithelial surfaces, resulting in the flow of enzyme-rich fluid from the pancreas. The diagnostic criteria for pancreatic fistula are as follows: The amylase concentration in the drainage fluid, measured at least 3 d after the operation, exceeds three times the upper limit of the normal serum amylase concentration, alongside corresponding clinical manifestations. A biliary fistula is an abnormal passage through which bile flows out of the biliary system into the abdominal cavity or outside the body through a breach (or the cholangio-jejunal anastomotic stoma) of the biliary system. Postoperative bleeding is defined as bleeding that occurs after pancreatic surgery, typically indicated by bloody fluid in the abdominal drainage or gastrointestinal decompression tube or hematochezia. Simultaneous changes in vital signs, such as the heart rate and decreased hemoglobin (Hb) concentration, were observed. Chylous fistula is diagnosed when chylous fluid is drained from a drainage tube, orifice, or wound at ≥ 3 d after the operation, regardless of the amount of drainage, provided the concentration of triglycerides is > 1100 mg/L. Intra-abdominal infection is defined by symptoms such as chills, high fever, abdominal distension, and intestinal paralysis, occurring 3 d after the operation and persisting for > 24 h. Laboratory tests showing significantly elevated white blood cell count, with or without HP and anemia, and imaging evidence of intra-abdominal fluid accumulation contribute to the diagnosis of intra-abdominal infection. The diagnosis can be confirmed if the puncture extract is purulent or if bacteria are detected.

### Observation indicators selected

Postoperative indicators were considered primary outcome measures, while general information and surgical factors were secondary.





DOI: 10.4240/wjgs.v15.i9.1941 Copyright ©The Author(s) 2023.

**Figure 1** Gastrointestinal series showing the effect of different medications on gastrointestinal motility. Angiography was performed in patients A and B after oral administration of meglumine diatrizoate. A: On postoperative day 9, patient A showed no peristalsis and high tension in the stomach; B: On postoperative day 13, 24 h following the injection of neostigmine through the transdermal receptor pathway, peristaltic waves were observed in patient A; C: On postoperative day 11, patient B showed no peristalsis in the stomach; D: On postoperative day 13, 24 h after the injection of neostigmine through the transdermal receptor pathway, peristaltic waves were observed in patient B.

**General information:** Gender, age, preoperative systemic diseases, preoperative nutritional status.

**Surgical factors:** Pylorus preservation status, lymph node dissection, operation time (min), intraoperative blood loss (mL).

**Postoperative indicators:** Pancreatic fistula, abdominal complications, early enteral nutrition treatment (within 4 d), and Hb and albumin (ALB) levels on postoperative days 1, 4, and 7.

### Statistics analysis

All data were statistically analyzed using SPSS 23.0. Enumeration data were expressed as proportions and compared using the Chi-square test or Fisher exact probability method. Measurement data were expressed as medians  $\pm$  SD and analyzed using the *t*-test. Variables with a test value of  $P < 0.10$  in the univariate analysis were included in the multivariate analysis to identify independent risk factors associated with DGE using logistic regression. The estimated odds ratio with 95% confidence intervals was used to describe the relative risk. Statistical significance was indicated by  $P < 0.05$ .

## RESULTS

### Occurrence of DGE after PD

The study included 66 males (57.9%) and 48 females (42.1%) (male-to-female ratio is approximately 1.4:1), with a mean age of 62.5 years (range: 33-83 years). Sixty-three cases (55.3%) underwent PD, while 51 (44.7%) received PPPD. The primary diseases diagnosed were pancreatic cancer, cholangiocarcinoma, ampullary carcinoma, solid pseudopapillary tumor of the pancreas, intraductal papillary mucinous neoplasms, chronic pancreatitis, duodenal stromal tumor, and duodenal papillary adenomyoma, with 46, 32, 23, 3, 3, 3, 2, and 2 cases, respectively. DGE occurred in 33 patients, with an incidence of 28.9%. The angiography results are shown in Figure 1.

### Analysis of risk factors for post-PD DGE

Univariate analysis of postoperative DGE showed that pylorus preservation, gastrointestinal anastomosis mode, postoperative abdominal complications, and ALB on a postoperative day 4 were significant risk factors for post-PD DGE ( $P < 0.05$ ), as shown in Table 1.

Table 1 Univariate analysis of delayed gastric emptying in 114 cases after pancreaticoduodenectomy

Clinical indexes	n	Postoperative delayed gastric emptying		$\chi^2/t$	P value
		Yes	No		
Sex				0.002	0.965
Male	66	19	47		
Female	48	14	34		
Age (yr)		62.00 ± 9.47	62.63 ± 9.72	0.316	0.752
Preoperative systemic disease				3.271	0.071
With	44	17	27		
Without	70	16	54		
Preoperative nutritional status				0.729	0.393
Good	92	25	67		
Poor	22	8	14		
Pylorus preservation				4.731	0.03
Yes	51	20	31		
No	63	13	50		
Lymph node dissection				2.451	0.117
Yes	58	13	45		
No	56	20	36		
Operation time (min)		216.54 ± 63.23	233.56 ± 66.35	1.259	0.211
Gastrointestinal anastomosis mode				4.731	0.03
Antecolic anastomosis	63	13	50		
Retrocolic anastomosis	51	20	31		
Intraoperative hemorrhage (mL)		327.27 ± 185.86	367.28 ± 273.54	0.77	0.443
Postoperative pancreatic fistula				0.277	0.871
Without	61	17	44		
Mild	41	13	28		
Severe	12	3	9		
Postoperative abdominal complications				8.551	0.003
With	62	25	37		
Without	52	8	44		
Early enteral nutrition				0.215	0.643
With	9	2	7		
Without	105	31	74		
Hb on postoperative day 1		117.23 ± 16.21	115.45 ± 18.23	0.488	0.627
Hb on postoperative day 4		113.12 ± 13.45	108.23 ± 14.32	1.682	0.095
Hb on postoperative day 7		109.64 ± 14.42	109.87 ± 14.23	0.078	0.938
ALB on postoperative day 1		30.93 ± 4.05	30.52 ± 3.73	0.519	0.605
ALB on postoperative day 4		34.85 ± 4.01	32.20 ± 5.22	2.616	0.01
ALB on postoperative day 7		34.52 ± 5.16	33.62 ± 4.27	0.959	0.339

Hb: Hemoglobin; ALB: Albumin.

The six observation indexes (preoperative systemic disease, pylorus preservation, gastrointestinal anastomosis mode, postoperative abdominal complications, Hb and ALB on postoperative day 4), which were identified with  $P < 0.10$  in the univariate analysis, were subjected to logistic regression analysis. The results are presented in Table 2.

Finally, the regression equation included postoperative abdominal complications, preoperative systemic diseases, and ALB on postoperative day 4 as factors influencing the occurrence of DGE after PD, as shown in Table 3.

## DISCUSSION

This study enrolled 114 patients who underwent PD within a recent 5-year period at a single center, ensuring a brief timeframe and providing comprehensive and reliable data. Severe DGE grades of B and C were observed in 33 of the 114 patients after PD, resulting in an incidence rate of 28.9%, consistent with findings from other reports. We further investigated the potential impact of pyloric preservation on the risk of DGE, which has been controversial. A randomized controlled trial (RCT) study conducted by Japanese scholars[14] on 130 patients who underwent PD reported a significantly higher incidence of DGE in patients with pylorus preservation compared to those without pylorus preservation (17.2% *vs* 4.5%,  $P = 0.02$ ). However, another RCT study conducted by German scholars on 188 patients undergoing PD by German scholars[15] found no significant difference in the incidence of DGE in 95 patients with pylorus preservation and 93 patients without pylorus preservation (25.3% *vs* 31.2%,  $P = 0.208$ ). In the clinical setting, we have consistently observed patients undergoing PPPD to have a higher possibility of developing DGE. The univariate analysis of this study also showed a higher incidence of DGE in patients who underwent PPPD ( $P = 0.03$ ), with 20 (39.2%) among the 51 patients developing DGE, compared to 13 (20.6%) among the 63 patients who underwent PD, which suggesting that PPPD patients have a high incidence of DGE in patients who have undergone PPPD. However, the multivariate analysis did not reveal a significant correlation between pylorus preservation and DGE. A further in-depth study found that patients with pylorus preservation experienced earlier and milder cases of DGE. If there were no other associated risk factors, the faster patient recovery would not compromise the safety of the procedure or the occurrence of postoperative abdominal complications.

Many studies have indicated postoperative abdominal complications as risk factors for DGE[14,16]. In this research, the univariate analysis revealed that postoperative abdominal complications are independent risk factors ( $P = 0.003$ ) for DGE. Multivariate analysis identified postoperative abdominal complications as the most significant risk factors for DGE (OR = 4.768). Serious postoperative abdominal complications, such as abdominal infection, hemorrhage, chylous fistula, and anastomotic leakage, primarily occur due to pancreatic fistula and biliary fistula with infection. Although postoperative pancreatic leakage was considered an observation index in this study, both univariate and multivariate analyses showed no significant association with postoperative DGE. This finding could be attributed to the adequate abdominal drainage of a simple pancreatic fistula and the absence of local infection in the abdominal cavity, reducing the likelihood of developing postoperative DGE.

Some scholars have suggested[16] that local inflammation or infection foci caused by pancreatic fistula may contribute to DGE. Therefore, measures such as improving the operation quality and implementing early postoperative interventions to promote intestinal peristalsis could lower the incidence of postoperative pancreatic fistula; this ensures unobstructed drainage after the occurrence of pancreatic fistula. The prompt puncture and drainage of the fistula could prevent the accumulation of corrosive fluids, thereby lowering the risk of postoperative DGE. Furthermore, this study identified two other significant risk factors: early postoperative ALB and preoperative systemic diseases. Postoperative ALB, in the presence of systemic diseases, leads to anastomotic edema; suture cutting causes a significant increase in the incidence of anastomotic leakage, which can easily result in abdominal infection, bleeding, and other complications, resulting in postoperative DGE.

A study has investigated the use of neostigmine in treating GP following abdominal surgery[17]; it has shown encouraging results, particularly in the treatment of post-PD DGE. In this study, neostigmine was administered to a 73-year-old male patient with refractory GP after distal gastrectomy, demonstrating a certain degree of safety and clinical efficacy, suggesting that neostigmine is a safe and effective treatment in GP. Previous studies have reported[18-20] the presence of receptor pathways for spinal and sympathetic nerves in the skin and the clinical effectiveness of intradermal administration in treating conditions such as herpes zoster neuralgia and visceral pain[21,22]. Our study demonstrated the unique effects of neostigmine administered *via* the transdermal receptor pathway, which cannot be replicated through other routes of administration. Investigating the target of neostigmine in the receptor pathway is also a future research direction for our team.

## CONCLUSION

Based on the results of this study, the following recommendations can be made for the prevention of DGE after PD: (1) Effective communication with patients and their families before the operation is crucial; this allows them to fully comprehend the potential postoperative complications, management strategies, and past experiences in handling complications, helping alleviate their anxiety; (2) Patients with systemic diseases such as hypertension and diabetes should receive careful perioperative treatment to maintain hemodynamic stability and a stable internal environment; (3) Standardizing and improving the procedure is essential to minimize postoperative pancreatic and bile leakage; and (4) Timely initiation of preoperative nutritional support therapy and postoperative ALB supplementation is essential to prevent tissue edema and maintain water-electrolyte balance. Continuous postoperative gastrointestinal decompression,

**Table 2** Observational indexes included in multivariate analysis ( $P < 0.10$ )

Clinical indexes	n	Postoperative delayed gastric emptying		$\chi^2/t$	P value
		Yes	No		
Preoperative systemic diseases				3.271	0.071
With	44	17	27		
Without	70	16	54		
Pylorus preservation				4.731	0.03
Yes	51	20	31		
No	63	13	50		
Gastrointestinal anastomosis mode				4.731	0.03
Antecolic anastomosis	63	13	50		
Retrocolic anastomosis	51	20	31		
Postoperative abdominal complications				8.551	0.003
With	62	25	37		
Without	52	8	44		
Hb on postoperative day 4		113.12 $\pm$ 13.45	109.43 $\pm$ 14.32	1.269	0.207
ALB on postoperative day 4		34.85 $\pm$ 4.01	32.20 $\pm$ 5.07	2.616	0.01

Hb: Hemoglobin; ALB: Albumin.

**Table 3** Multivariate analysis of delayed gastric emptying in 114 cases after pancreaticoduodenectomy

Related factors	Regression coefficients	OR	OR (95%CI)	P value
Postoperative abdominal complications	1.562	4.768	1.748-13.005	0.002
Preoperative systemic diseases	0.923	2.516	1.004-6.304	0.049
ALB on postoperative day 4	0.178	1.195	1.062-1.344	0.003

Constant: Regression coefficient - 8.241. Regression equation:  $\text{Logit}(P) = 1.562 \times \text{postoperative abdominal complications} + 0.923 \times \text{preoperative medical complications} + 0.178 \times \text{early postoperative hypoproteinemia} - 8.241$ . ALB: Albumin; OR: Odds ratio.

and using patent gastric and abdominal cavity drainage tubes could help reduce the likelihood of abdominal complications.

However, this study has some limitations. As a single-center retrospective study, the potential biases in the data collection and analysis processes could have moderately influenced the final study results. Moreover, no specific analysis was performed during DGE treatment, and a larger sample size with more extensive data is needed to verify the therapeutic effect of neostigmine. Therefore, well-designed, multi-center studies with larger sample sizes are necessary for validation.

## ARTICLE HIGHLIGHTS

### Research background

Mortality after pancreaticoduodenectomy (PD) has decreased to very low levels in specialized centers. However, postoperative morbidity remains high. Delayed gastric emptying (DGE) still remains the most frequent complication following pancreaticoduodenectomy (PD).

### Research motivation

When it comes to treatment, the specific pathogenesis of DGE remains uncharacterized, nor is there a specific treatment plan for DGE, resulting in unsatisfactory effects of various treatment approaches. The purpose of this study is to thoroughly explore the risk factors of the disease and introduce a new treatment method.

## Research objectives

This study aims to identify related risk factors for DGE after the PD procedure.

## Research methods

In this retrospective, cross-sectional study, clinical data were collected from 114 patients who underwent PD from January 2015 to June 2018. They were analyzed regarding demographic factors, pre- and perioperative characteristics, and surgical complications. Univariate and multivariate analyses were performed to identify the risk factors for post-PD DGE.

## Research results

The study included 66 males (57.9%) and 48 females (42.1%), aged 33-83 years (mean: 62.5), with a male-to-female ratio of approximately 1.4:1. There were 63 cases (55.3%) of PD and 51 cases (44.7%) of pylorus-preserving pancreaticoduodenectomy (PPPD). Among the 114 patients who underwent PD, 33 (28.9%) developed postoperative DGE. Univariate analysis revealed significant differences in four of the 14 clinical indexes observed: Pylorus preservation, retrocolonic anastomosis, postoperative abdominal complications, and early postoperative albumin (ALB). Logistic regression analysis further identified postoperative abdominal complications [odds ratio (OR) = 4.768,  $P = 0.002$ ], preoperative systemic diseases (OR = 2.516,  $P = 0.049$ ), and early postoperative ALB (OR = 1.195,  $P = 0.003$ ) as significant risk factors.

## Research conclusions

Postoperative severe abdominal complications, preoperative systemic disease and early postoperative ALB are risk factors for post-PD DGE.

## Research perspectives

The research perspective of this study is to thoroughly explore the risk factors for post-PD DGE.

---

## FOOTNOTES

**Author contributions:** Xie FL and Ren LJ contributed equally to this work and are co-first authors; Xie FL and Ren LJ designed the research and wrote the first manuscript; Wang Z, Xu WD, Xu TL, Ge XQ, LW, Ge XM and Zhou WK contributed to conceiving the research and analyzing data; Wang Z, Li K and Zhang YH conducted the analysis and provided guidance for the research; all authors reviewed and approved the final manuscript.

**Institutional review board statement:** This study was approved by the Ethic Committee of Xuzhou Medical University Affiliated Hospital of Lianyungang (The First People's Hospital of Lianyungang) (Approval No. LW-20230411001-01).

**Informed consent statement:** Patients were not required to give informed consent to the study because the analysis used anonymous clinical data that were obtained after each patient agreed to treatment by written consent.

**Conflict-of-interest statement:** There is no conflict of interest.

**Data sharing statement:** All data and materials are available from the corresponding author.

**Open-Access:** This article is an open-access article that was selected by an in-house editor and fully peer-reviewed by external reviewers. It is distributed in accordance with the Creative Commons Attribution NonCommercial (CC BY-NC 4.0) license, which permits others to distribute, remix, adapt, build upon this work non-commercially, and license their derivative works on different terms, provided the original work is properly cited and the use is non-commercial. See: <https://creativecommons.org/licenses/by-nc/4.0/>

**Country/Territory of origin:** China

**ORCID number:** Zhong Wang 0009-0000-9467-8880.

**S-Editor:** Yan JP

**L-Editor:** A

**P-Editor:** Yan JP

---

## REFERENCES

- 1 Xiang Y, Wu J, Lin C, Yang Y, Zhang D, Xie Y, Yao X, Zhang X. Pancreatic reconstruction techniques after pancreaticoduodenectomy: a review of the literature. *Expert Rev Gastroenterol Hepatol* 2019; **13**: 797-806 [PMID: 31282769 DOI: 10.1080/17474124.2019.1640601]
- 2 Peng YC, Wu CH, Tien YW, Lu TP, Wang YH, Chen BB. Preoperative sarcopenia is associated with poor overall survival in pancreatic cancer patients following pancreaticoduodenectomy. *Eur Radiol* 2021; **31**: 2472-2481 [PMID: 32974690 DOI: 10.1007/s00330-020-07294-7]
- 3 Schorn S, Demir IE, Vogel T, Schirren R, Reim D, Wilhelm D, Friess H, Ceyhan GO. Mortality and postoperative complications after different types of surgical reconstruction following pancreaticoduodenectomy-a systematic review with meta-analysis. *Langenbecks Arch Surg* 2019; **404**: 141-157 [PMID: 30820662 DOI: 10.1007/s00423-019-01762-5]



- 4 **Wang TH**, Lin AY, Mentor K, O'Grady G, Pandanaboyana S. Delayed Gastric Emptying and Gastric Remnant Function After Pancreaticoduodenectomy: A Systematic Review of Objective Assessment Modalities. *World J Surg* 2023; **47**: 236-259 [PMID: 36274094 DOI: 10.1007/s00268-022-06784-7]
- 5 **Simon R**. Complications After Pancreaticoduodenectomy. *Surg Clin North Am* 2021; **101**: 865-874 [PMID: 34537148 DOI: 10.1016/j.suc.2021.06.011]
- 6 **Kurahara H**, Shintchi H, Maemura K, Mataka Y, Iino S, Sakoda M, Ueno S, Takao S, Natsugoe S. Delayed gastric emptying after pancreatoduodenectomy. *J Surg Res* 2011; **171**: e187-e192 [PMID: 22001182 DOI: 10.1016/j.jss.2011.08.002]
- 7 **Cogliandro RF**, Rizzoli G, Bellacosa L, De Giorgio R, Cremon C, Barbara G, Stanghellini V. Is gastroparesis a gastric disease? *Neurogastroenterol Motil* 2019; **31**: e13562 [PMID: 30773743 DOI: 10.1111/nmo.13562]
- 8 **Panwar R**, Pal S. The International Study Group of Pancreatic Surgery definition of delayed gastric emptying and the effects of various surgical modifications on the occurrence of delayed gastric emptying after pancreatoduodenectomy. *Hepatobiliary Pancreat Dis Int* 2017; **16**: 353-363 [PMID: 28823364 DOI: 10.1016/S1499-3872(17)60037-7]
- 9 **Mao SH**, Shyr BS, Chen SC, Wang SE, Shyr YM, Shyr BU. Risk factors for delayed gastric emptying in pancreaticoduodenectomy. *Sci Rep* 2022; **12**: 22270 [PMID: 36564517 DOI: 10.1038/s41598-022-26814-7]
- 10 **Navas CM**, Wadas ED, Zbib NH, Crowell MD, Lacy BE. Gastroparesis and Severity of Delayed Gastric Emptying: Comparison of Patient Characteristics, Treatments and Medication Adverse Events. *Dig Dis Sci* 2021; **66**: 526-534 [PMID: 32306190 DOI: 10.1007/s10620-020-06258-7]
- 11 **Tewari M**, Mahendran R, Kiran T, Verma A, Dixit VK, Shukla S, Shukla HS. Outcome of 150 Consecutive Blumgart's Pancreaticojejunostomy After Pancreaticoduodenectomy. *Indian J Surg Oncol* 2019; **10**: 65-71 [PMID: 30948875 DOI: 10.1007/s13193-018-0821-z]
- 12 **Luttikhoud J**, de Ruijter FM, van Norren K, Diamant M, Witkamp RF, van Leeuwen PA, Vermeulen MA. Review article: the role of gastrointestinal hormones in the treatment of delayed gastric emptying in critically ill patients. *Aliment Pharmacol Ther* 2013; **38**: 573-583 [PMID: 23879699 DOI: 10.1111/apt.12421]
- 13 **Study Group of Pancreatic Surgery in Chinese Society of Surgery of Chinese Medical Association**; Pancreatic Disease Committee of Chinese Research Hospital Association; Editorial Board of Chinese Journal of Surgery. [A consensus statement on the diagnosis, treatment, and prevention of common complications after pancreatic surgery (2017)]. *Zhonghua Wai Ke Za Zhi* 2017; **55**: 328-334 [PMID: 28464570 DOI: 10.3760/cma.j.issn.0529-5815.2017.05.003]
- 14 **Kawai M**, Tani M, Hirono S, Miyazawa M, Shimizu A, Uchiyama K, Yamaue H. Pylorus ring resection reduces delayed gastric emptying in patients undergoing pancreatoduodenectomy: a prospective, randomized, controlled trial of pylorus-resecting versus pylorus-preserving pancreatoduodenectomy. *Ann Surg* 2011; **253**: 495-501 [PMID: 21248633 DOI: 10.1097/SLA.0b013e31820d98f1]
- 15 **Matsumoto I**, Shinzeki M, Asari S, Goto T, Shirakawa S, Ajiki T, Fukumoto T, Suzuki Y, Ku Y. A prospective randomized comparison between pylorus- and subtotal stomach-preserving pancreatoduodenectomy on postoperative delayed gastric emptying occurrence and long-term nutritional status. *J Surg Oncol* 2014; **109**: 690-696 [PMID: 24619624 DOI: 10.1002/jso.23566]
- 16 **Qu H**, Sun GR, Zhou SQ, He QS. Clinical risk factors of delayed gastric emptying in patients after pancreaticoduodenectomy: a systematic review and meta-analysis. *Eur J Surg Oncol* 2013; **39**: 213-223 [PMID: 23294533 DOI: 10.1016/j.ejso.2012.12.010]
- 17 **Jayarajah U**, Yapa K, Ranaweera K, Rahuman A, Perera P, Weerasekara D. Successful use of neostigmine for resistant gastroparesis following distal gastrectomy: A case report. *Int J Surg Case Rep* 2023; **106**: 108166 [PMID: 37068456 DOI: 10.1016/j.ijscr.2023.108166]
- 18 **Orihara M**, Takazawa T, Horiuchi T, Sakamoto S, Nagumo K, Tomita Y, Tomioka A, Yoshida N, Yokohama A, Saito S. Comparison of incidence of anaphylaxis between sugammadex and neostigmine: a retrospective multicentre observational study. *Br J Anaesth* 2020; **124**: 154-163 [PMID: 31791621 DOI: 10.1016/j.bja.2019.10.016]
- 19 **Dagnino APA**, Campos MM. Chronic Pain in the Elderly: Mechanisms and Perspectives. *Front Hum Neurosci* 2022; **16**: 736688 [PMID: 35308613 DOI: 10.3389/fnhum.2022.736688]
- 20 **Rzhevskiy A**, Popov A, Pavlov C, Anissimov Y, Zvyagin A, Levin Y, Kochba E. Intradermal injection of lidocaine with a microneedle device to provide rapid local anaesthesia for peripheral intravenous cannulation: A randomised open-label placebo-controlled clinical trial. *PLoS One* 2022; **17**: e0261641 [PMID: 35100279 DOI: 10.1371/journal.pone.0261641]
- 21 **Wang YL**, Zhu HY, Lv XQ, Ren XY, Peng YC, Qu JY, Shen XF, Sun R, Xiao ML, Zhang H, Chen ZH, Cong P. Electroacupuncture Zusanli (ST36) Relieves Somatic Pain in Colitis Rats by Inhibiting Dorsal Root Ganglion Sympathetic-Sensory Coupling and Neurogenic Inflammation. *Neural Plast* 2023; **2023**: 9303419 [PMID: 36910013 DOI: 10.1155/2023/9303419]
- 22 **Yang XN**, Geng ZS, Zhang XL, Zhang YH, Wang XL, Zhang XB, Cui JZ. Single intracutaneous injection of local anesthetics and steroids alleviates acute nonspecific neck pain: A CONSORT-perspective, randomized, controlled clinical trial. *Medicine (Baltimore)* 2018; **97**: e11285 [PMID: 29995761 DOI: 10.1097/MD.00000000000011285]



Published by **Baishideng Publishing Group Inc**  
7041 Koll Center Parkway, Suite 160, Pleasanton, CA 94566, USA

**Telephone:** +1-925-3991568

**E-mail:** [bpgoffice@wjgnet.com](mailto:bpgoffice@wjgnet.com)

**Help Desk:** <https://www.f6publishing.com/helpdesk>

<https://www.wjgnet.com>

