

# World Journal of *Gastrointestinal Surgery*

*World J Gastrointest Surg* 2023 September 27; 15(9): 1841-2097



## Contents

Monthly Volume 15 Number 9 September 27, 2023

## REVIEW

- 1841** Indocyanine green dye and its application in gastrointestinal surgery: The future is bright green  
*Lim ZY, Mohan S, Balasubramaniam S, Ahmed S, Siew CCH, Shelat VG*
- 1858** Hepatic ischemia-reperfusion syndrome and its effect on the cardiovascular system: The role of treprostinil, a synthetic prostacyclin analog  
*Mouratidou C, Pavlidis ET, Katsanos G, Kotoulas SC, Mouloudi E, Tsoulfas G, Galanis IN, Pavlidis TE*

## MINIREVIEWS

- 1871** Advances and challenges of gastrostomy insertion in children  
*Bitar R, Azaz A, Rawat D, Hobeldin M, Miqdady M, Abdelsalam S*
- 1879** Surgical decompression for the management of abdominal compartment syndrome with severe acute pancreatitis: A narrative review  
*Nasa P, Chanchalani G, Juneja D, Malbrain ML*

## ORIGINAL ARTICLE

## Retrospective Cohort Study

- 1892** Excision of malignant and pre-malignant rectal lesions by transanal endoscopic microsurgery in patients under 50 years of age  
*Shilo Yaacobi D, Berger Y, Shaltiel T, Bekhor EY, Khalifa M, Issa N*
- 1901** Safety and feasibility of modified duct-to-mucosa pancreaticojejunostomy during pancreatoduodenectomy: A retrospective cohort study  
*Sun Y, Yu XF, Yao H, Xu S, Ma YQ, Chai C*

## Retrospective Study

- 1910** Application of early enteral nutrition nursing based on enhanced recovery after surgery theory in patients with digestive surgery  
*Shao YR, Ke X, Luo LH, Xu JD, Xu LQ*
- 1919** Autologous bone marrow infusion *via* portal vein combined with splenectomy for decompensated liver cirrhosis: A retrospective study  
*Liu BC, Cheng MR, Lang L, Li L, Si YH, Li AJ, Xu Q, Zhang H*
- 1932** Application of multidisciplinary collaborative nursing with family care for enhanced recovery after surgery in children with inguinal hernia  
*Wang XM, Hou Q*
- 1941** Preoperative and postoperative complications as risk factors for delayed gastric emptying following pancreaticoduodenectomy: A single-center retrospective study  
*Xie FL, Ren LJ, Xu WD, Xu TL, Ge XQ, Li W, Ge XM, Zhou WK, Li K, Zhang YH, Wang Z*

- 1950** Efficacy of ileus tube combined with meglumine diatrizoate in treating postoperative inflammatory bowel obstruction after surgery  
*Yang W, Pu J*
- 1959** Effect of internet multiple linkage mode-based extended care combined with in-hospital comfort care on colorectal cancer patients undergoing colostomy  
*Xu L, Zhou MZ*
- 1969** Short- and long-term results of open *vs* laparoscopic multisegmental resection and anastomosis for synchronous colorectal cancer located in separate segments  
*Quan JC, Zhou XJ, Mei SW, Liu JG, Qiu WL, Zhang JZ, Li B, Li YG, Wang XS, Chang H, Tang JQ*
- 1978** Prediction model of stress ulcer after laparoscopic surgery for colorectal cancer established by machine learning algorithm  
*Yu DM, Wu CX, Sun JY, Xue H, Yuwen Z, Feng JX*
- 1986** Effect of two surgical approaches on the lung function and prognosis of patients with combined esophago-gastric cancer  
*Sun CB, Han XQ, Wang H, Zhang YX, Wang MC, Liu YN*
- 1995** Clinical significance of serum oxidative stress and serum uric acid levels before surgery for hepatitis B-related liver cancer  
*Hou JX, Wang YB, Wu J, Ding GS, Wu Y, Wei LH, Wang F, Zhang ZM*
- 2003** Multifactor analysis of the technique in total laparoscopic gastric cancer  
*Shi JK, Wang B, Zhang XS, Lv P, Chen YL, Ren SY*
- 2012** Value of enhanced computed tomography in differentiating small mesenchymal tumours of the gastrointestinal from smooth muscle tumours  
*Nie WJ, Jing Z, Hua M*
- 2021** Risk factors for myocardial injury during living donor liver transplantation in pediatric patients with biliary atresia  
*Wu YL, Li TY, Gong XY, Che L, Sheng MW, Yu WL, Weng YQ*

**Observational Study**

- 2032** Comparative detection of syndecan-2 methylation in preoperative and postoperative stool DNA in patients with colorectal cancer  
*Song JH, Oh TJ, An S, Lee KH, Kim JY, Kim JS*

**Prospective Study**

- 2042** Preoperative prediction of microvascular invasion in hepatocellular carcinoma using ultrasound features including elasticity  
*Jiang D, Qian Y, Tan BB, Zhu XL, Dong H, Qian R*
- 2052** Quantitative evaluation of colorectal tumour vasculature using contrast-enhanced ultrasound: Correlation with angiogenesis and prognostic significance  
*Li MH, Li WW, He L, Li JF, Zhang SY*

**CASE REPORT**

- 2063** Laparoscopy-assisted gastrectomy for advanced gastric cancer patients with situs inversus totalis: Two case reports and review of literature  
*Liu HB, Cai XP, Lu Z, Xiong B, Peng CW*
- 2074** Acute flare of systemic lupus erythematosus with extensive gastrointestinal involvement: A case report and review of literature  
*Huang H, Li P, Zhang D, Zhang MX, Yu K*
- 2083** Surgical management of gallstone ileus after one anastomosis gastric bypass: A case report  
*El Feghali E, Akel R, Chamaa B, Kazan D, Chakhtoura G*
- 2089** Dual transformation therapy for giant hepatocellular carcinoma: Two case reports and review of literature  
*Gao Q, Zhu GZ, Han CY, Ye XP, Huang HS, Mo ST, Peng T*

**ABOUT COVER**

Editorial Board Member of *World Journal of Gastrointestinal Surgery*, Sung Uk Bae, MD, PhD, Associate Professor, Department of Surgery, Keimyung University Dongsan Hospital, Daegu 42601, South Korea.  
sabiston0000@hanmail.net

**AIMS AND SCOPE**

The primary aim of *World Journal of Gastrointestinal Surgery* (WJGS, *World J Gastrointest Surg*) is to provide scholars and readers from various fields of gastrointestinal surgery with a platform to publish high-quality basic and clinical research articles and communicate their research findings online.

WJGS mainly publishes articles reporting research results and findings obtained in the field of gastrointestinal surgery and covering a wide range of topics including biliary tract surgical procedures, biliopancreatic diversion, colectomy, esophagectomy, esophagostomy, pancreas transplantation, and pancreatectomy, etc.

**INDEXING/ABSTRACTING**

The WJGS is now abstracted and indexed in Science Citation Index Expanded (SCIE, also known as SciSearch®), Current Contents/Clinical Medicine, Journal Citation Reports/Science Edition, PubMed, PubMed Central, Reference Citation Analysis, China National Knowledge Infrastructure, China Science and Technology Journal Database, and Superstar Journals Database. The 2023 Edition of Journal Citation Reports® cites the 2022 impact factor (IF) for WJGS as 2.0; IF without journal self cites: 1.9; 5-year IF: 2.2; Journal Citation Indicator: 0.52; Ranking: 113 among 212 journals in surgery; Quartile category: Q3; Ranking: 81 among 93 journals in gastroenterology and hepatology; and Quartile category: Q4.

**RESPONSIBLE EDITORS FOR THIS ISSUE**

Production Editor: Rui-Rui Wu; Production Department Director: Xiang Li; Editorial Office Director: Jia-Ru Fan.

**NAME OF JOURNAL**

*World Journal of Gastrointestinal Surgery*

**ISSN**

ISSN 1948-9366 (online)

**LAUNCH DATE**

November 30, 2009

**FREQUENCY**

Monthly

**EDITORS-IN-CHIEF**

Peter Schemmer

**EDITORIAL BOARD MEMBERS**

<https://www.wjgnet.com/1948-9366/editorialboard.htm>

**PUBLICATION DATE**

September 27, 2023

**COPYRIGHT**

© 2023 Baishideng Publishing Group Inc

**INSTRUCTIONS TO AUTHORS**

<https://www.wjgnet.com/bpg/gerinfo/204>

**GUIDELINES FOR ETHICS DOCUMENTS**

<https://www.wjgnet.com/bpg/GerInfo/287>

**GUIDELINES FOR NON-NATIVE SPEAKERS OF ENGLISH**

<https://www.wjgnet.com/bpg/gerinfo/240>

**PUBLICATION ETHICS**

<https://www.wjgnet.com/bpg/GerInfo/288>

**PUBLICATION MISCONDUCT**

<https://www.wjgnet.com/bpg/gerinfo/208>

**ARTICLE PROCESSING CHARGE**

<https://www.wjgnet.com/bpg/gerinfo/242>

**STEPS FOR SUBMITTING MANUSCRIPTS**

<https://www.wjgnet.com/bpg/GerInfo/239>

**ONLINE SUBMISSION**

<https://www.f6publishing.com>



## Laparoscopy-assisted gastrectomy for advanced gastric cancer patients with situs inversus totalis: Two case reports and review of literature

Hong-Bo Liu, Xiao-Peng Cai, Zhao Lu, Bin Xiong, Chun-Wei Peng

**Specialty type:** Gastroenterology and hepatology

**Provenance and peer review:**

Unsolicited article; Externally peer reviewed.

**Peer-review model:** Single blind

**Peer-review report's scientific quality classification**

Grade A (Excellent): 0  
Grade B (Very good): B, B  
Grade C (Good): C, C  
Grade D (Fair): 0  
Grade E (Poor): 0

**P-Reviewer:** Kumar M, India; Park BK, South Korea; Shah OJ, India; Uhlmann D, Germany

**Received:** March 20, 2023

**Peer-review started:** March 20, 2023

**First decision:** June 17, 2023

**Revised:** July 1, 2023

**Accepted:** July 25, 2023

**Article in press:** July 25, 2023

**Published online:** September 27, 2023



**Hong-Bo Liu, Xiao-Peng Cai, Zhao Lu, Bin Xiong, Chun-Wei Peng**, Department of Gastrointestinal Surgery, Hubei Key Laboratory of Tumor Biological Behaviors & Hubei Cancer Clinical Study Center, Wuhan Peritoneal Cancer Clinical Medical Center, Zhongnan Hospital of Wuhan University, Wuhan 430070, Hubei Province, China

**Hong-Bo Liu**, School of Nursing, Wuhan University, Wuhan 430070, Hubei Province, China

**Corresponding author:** Chun-Wei Peng, MD, PhD, Doctor, Department of Gastrointestinal Surgery, Hubei Key Laboratory of Tumor Biological Behaviors & Hubei Cancer Clinical Study Center, Wuhan Peritoneal Cancer Clinical Medical Center, Zhongnan Hospital of Wuhan University, No. 169 Donghu Road, Wuchang District, Wuhan 430070, Hubei Province, China. [whupengcw@whu.edu.cn](mailto:whupengcw@whu.edu.cn)

### Abstract

#### BACKGROUND

Situs inversus totalis (SIT) is a rare condition in which the positions of abdominal and thoracic organs present a “mirror image” of the normal ones in the median sagittal plane. Although minimally invasive surgery has evolved to achieve laparoscopic gastrectomy for gastric cancer (GC) patients with SIT, it is difficult to perform lymphadenectomy (LND) in such a transposed anatomical condition. Herein, we report the cases of two patients with SIT who successfully underwent laparoscopy-assisted gastrectomy (LAG) with D2 LND.

#### CASE SUMMARY

Case 1: A 65-year-old man was admitted for intermittent abdominal pain and distension, occasional belching, and acid reflux for 4 mo. He was diagnosed with GC (cT3N1-2M0) with SIT. Before surgery, he had undergone four cycles of neoadjuvant chemotherapy and immunotherapy. Then, the patient was evaluated as having a partial response, and laparoscopy-assisted distal gastrectomy with D2 LND and Billroth II reconstruction were performed. The operation was performed successfully within 240 min with an estimated blood loss of 50 mL and no severe complications. The patient was discharged on postoperative day (POD) 9. Case 2: A 55-year-old man was admitted for upper abdominal distension with pain and discomfort after eating for 3 mo. He was diagnosed with GC (cT3N1M0) with SIT. He had a history of hypertension for more than 10 years; however, his blood pressure was well-controlled *via* regular medication. We performed laparoscopy-

assisted total gastrectomy with D2 LND and Roux-en-Y reconstruction. The operation was performed successfully within 168 min with an estimated blood loss of 50 mL and no severe complications. The patient was discharged on POD 10.

## CONCLUSION

LAG with D2 LND could be considered an accessible, safe, and curative procedure for advanced GC patients with SIT.

**Key Words:** Situs inversus totalis; Laparoscopy-assisted gastrectomy; Advanced gastric cancer; Surgery modality; Lymphadenectomy; Case report

©The Author(s) 2023. Published by Baishideng Publishing Group Inc. All rights reserved.

**Core Tip:** Laparoscopic surgery in situs inversus totalis (SIT) patients with gastric cancer (GC) is exceedingly rare and challenging. We report the cases of two advanced GC patients with SIT who successfully underwent laparoscopy-assisted gastrectomy with D2 lymphadenectomy. In this report, we share our experience and review the literature in the previous 11 years to summarize the general consensus on laparoscopic radical gastrectomy in patients with SIT.

**Citation:** Liu HB, Cai XP, Lu Z, Xiong B, Peng CW. Laparoscopy-assisted gastrectomy for advanced gastric cancer patients with situs inversus totalis: Two case reports and review of literature. *World J Gastrointest Surg* 2023; 15(9): 2063-2073

**URL:** <https://www.wjgnet.com/1948-9366/full/v15/i9/2063.htm>

**DOI:** <https://dx.doi.org/10.4240/wjgs.v15.i9.2063>

## INTRODUCTION

Situs inversus totalis (SIT), a rare autosomal recessive disorder characterized by a complete congenital mirror-image malposition of the thoracic and abdominal organs, has an incidence of about 1/10000-1/20000[1]. Due to the inverted anatomical disposition of organs in patients with SIT, surgeons are required to adopt unfamiliar operating habits, which also increases the difficulty of identifying anatomical structures. Despite the rarity of encountering this anomaly, focusing on SIT may compensate for the lack of experience in surgery.

Laparoscopic radical gastrectomy has been performed in specialized centers in recent years for its minimal invasiveness and association with uneventful recovery. However, this operation is still challenging due to the change in traditional operating habits and increased difficulty in identifying anatomical structures under the local visual field, which are also difficulties encountered in patients with SIT. Moreover, no tactility can be of significant influence during surgery, making it more complicated to implement laparoscopic radical gastrectomy in patients with SIT. In light of such patients, it is still worth summarizing experience and exploring the most feasible ways of optimizing surgery.

In this report, we present the cases of two patients having advanced gastric cancer (GC) with SIT, both of whom underwent laparoscopy-assisted gastrectomy and standard D2 lymphadenectomy (LND). We also review the literature to discuss the current surgical strategies for GC patients with SIT.

## CASE PRESENTATION

### Chief complaints

**Case 1:** A 65-year-old Chinese man presented with intermittent abdominal pain and distension, occasional belching, and acid reflux with no obvious cause.

**Case 2:** A 55-year-old Chinese man presented with upper abdominal distension with pain and discomfort after eating.

### History of present illness

**Case 1:** In April 2022, the patient presented at a local hospital with intermittent abdominal pain and distension, occasional belching, and acid reflux of no obvious etiology for 4 mo, all of which were unrelated to eating. He denied nausea, vomiting, hematemesis, black stool, diarrhea, and constipation. Upper gastrointestinal endoscopy identified poor motility of the gastric antrum, with a large ulcer covered with black scabs and blood clots. Furthermore, tissue biopsy with histopathology revealed the presence of poorly or moderately differentiated adenocarcinoma. The patient did not receive any anti-tumor treatment before hospitalization. Since the onset of the disease, his spirit, appetite, sleep, physical strength, and weight did not change significantly. The patient was admitted to our hospital for further treatment.

**Case 2:** In December 2019, the patient visited a local hospital for postprandial upper abdominal distension with pain and

discomfort for 3 mo. He denied nausea, vomiting, hematemesis, black stool, diarrhea, and constipation. Also, the self-administered gastric protective medicine was ineffective. Upper gastrointestinal endoscopy identified a gastric cardia ulcer, which tissue biopsy identified as poorly differentiated adenocarcinoma and partly signet-ring cell carcinoma. The patient did not receive any anti-tumor treatment before hospitalization. Since the onset of the disease, his spirit, appetite, sleep, and physical strength did not change significantly, except for his weight which decreased slightly. Then, the patient was admitted to our hospital for further treatment.

### **History of past illness**

**Case 1:** The patient denied any history of a chronic illness. He had no history of abdominal surgery.

**Case 2:** The patient acknowledged a history of hypertension for ten more years that was properly controlled with regular medication. He had no history of abdominal surgery.

### **Personal and family history**

**Case 1:** The patient denied any family history of malignant tumors.

**Case 2:** The patient denied any family history of malignant tumors.

### **Physical examination**

**Case 1:** Physical examination revealed an apical heartbeat on the right side.

**Case 2:** Physical examination revealed mild lower abdominal tenderness and an apical heartbeat on the right side.

### **Laboratory examinations**

**Case 1:** No obvious abnormal tumor markers were observed.

**Case 2:** Carbohydrate antigen CA199 level was 365.2 (normal range: 0–37.0) U/mL.

### **Imaging examinations**

**Case 1:** The detailed imaging results are presented in [Figure 1](#). Abdominal contrast-enhanced computed tomography (CT) revealed mirror transposition of all organs ([Figure 1A](#)) and thickening of the antral wall ([Figure 1B](#)). Besides, positron emission tomography-CT performed in a local hospital revealed increased metabolism in the gastric antrum and surrounding lymph nodes. No abnormal course of vascularity was found in this process.

**Case 2:** Abdominal contrast-enhanced CT revealed mirror transposition of all organs ([Figure 1G](#)), localized thickening of the cardia and smaller curvature of the stomach, and increased numbers of peri-gastric small lymph nodes ([Figure 1H](#)). No abnormal course of vascularity was found in this process.

---

## **FURTHER DIAGNOSTIC WORK-UP**

---

### **Case 1**

A preoperative pathological examination was performed. The analysis of the biopsy segment resected from the gastric antrum ulcer revealed poorly to moderately differentiated adenocarcinoma (cT3N1-2M0). Immunohistochemical analyses revealed that the tumor cells tested positive for MSH2 and MSH6 and negative for HER-2, MLH1, and PMS2, which signifies a loss of MMR expression.

### **Case 2**

No preoperative pathological examination was performed.

---

## **FINAL DIAGNOSIS**

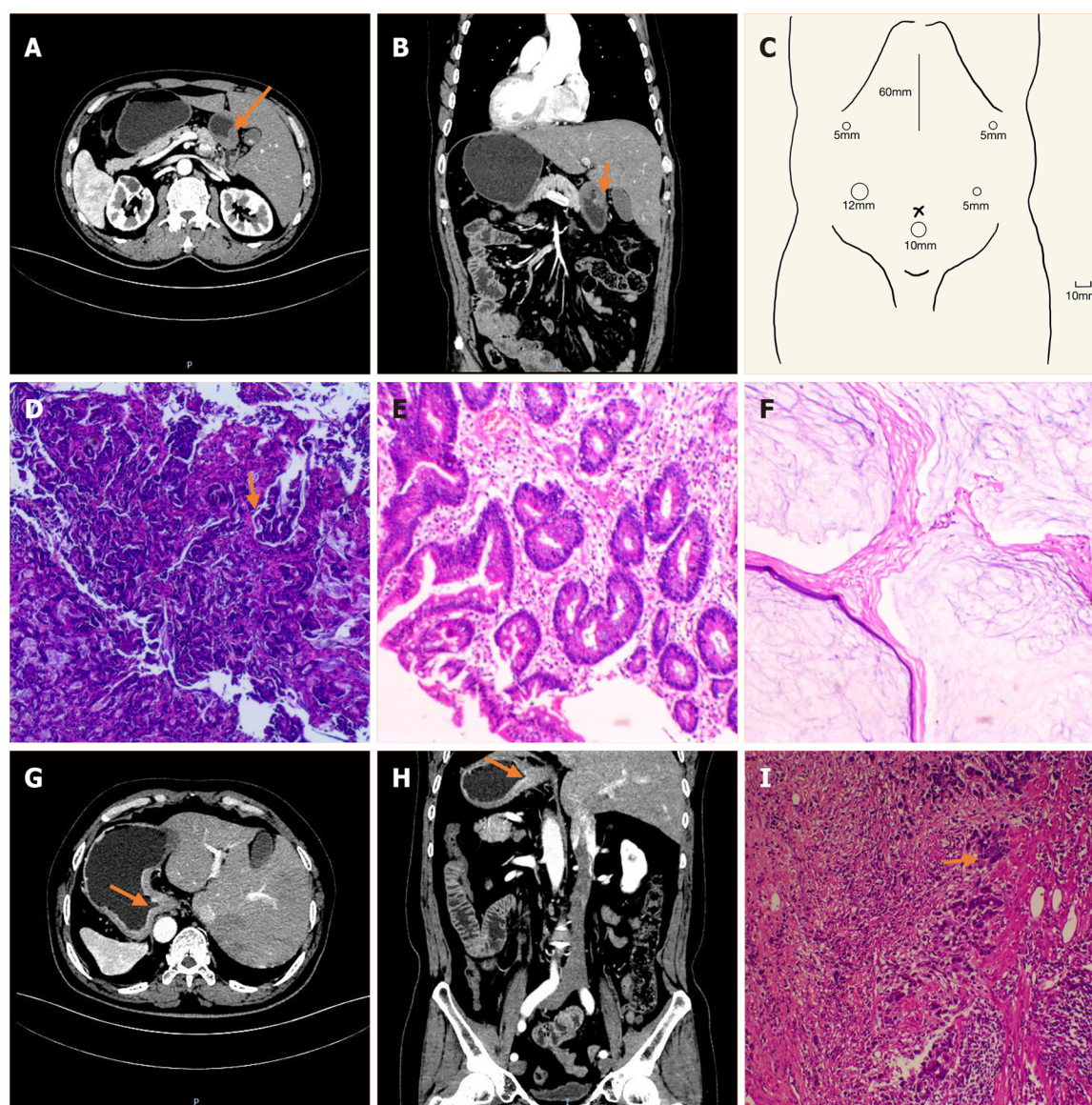
---

### **Case 1**

The patient was diagnosed with adenocarcinoma of the gastric antrum (cT3N1-2M0) with SIT.

### **Case 2**

The patient was diagnosed with gastric cardia malignancy (cT3N1M0) with SIT.



DOI: 10.4240/wjgs.v15.i9.2063 Copyright ©The Author(s) 2023.

**Figure 1** Imaging and pathological features of the two patients. A–F: Case 1; A: Computed tomography (CT) image showing the inverse positioning of intra-abdominal organs; B: CT image showing antral wall thickening; C: Sites of trocar placement. A 12-mm trocar was placed in the right hypochondriac region, and the other three 5-mm trocars were placed (one each) in the right subcostal region, the right lateral abdominal region, and the left lateral abdominal region; D: Preoperative (after neoadjuvant chemotherapy) pathologic biopsies showing that tumor nests still existed; E: Postoperative pathologic biopsies showing that there were no nidi; F: Postoperative pathologic biopsies showing no nidi; G–I: Case 2; G: CT image showing the inverse positioning of all intra-abdominal organs; H: CT image revealing the thickening of the cardia and smaller curvature of gastric tissue and enlarged peri-gastric small lymph nodes; I: Postoperative pathologic biopsies showing that nidi still existed.

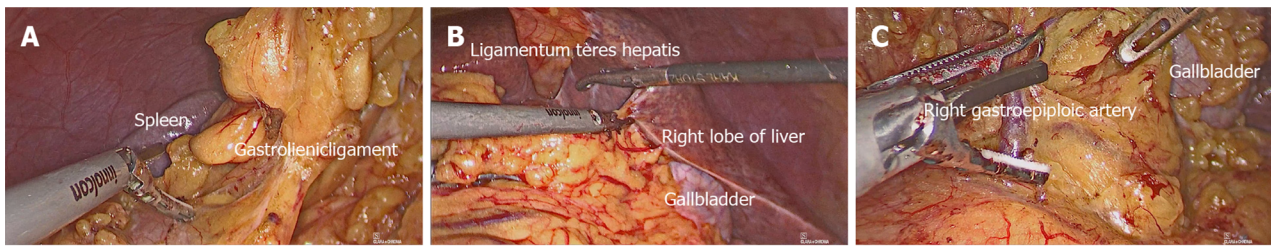
## TREATMENT

### Case 1

Before surgery, four cycles of neoadjuvant chemotherapy with the S-1 and oxaliplatin (SOX) regimen (oxaliplatin 230 mg on day 1, tegafur 60 mg twice daily on days 1–14, and sintilimab 200 mg once every 3 wk) and immunotherapy was given. The preoperative (after neoadjuvant chemotherapy) pathologic biopsies are presented in [Figure 1D](#).

Laparoscopy-assisted distal gastrectomy with standard D2 LND and Billroth II reconstruction were performed. During surgery, the surgeon stood on the right side of the patient (opposite to the usual side for patients undergoing laparoscopic gastrectomy). A 10-mm trocar was created 10 mm below the umbilicus, and carbon dioxide was injected into the peritoneal cavity at 10 mmHg. The other four trocars were placed in the bilateral subcostal and lateral abdominal area, arranged in a “U” shape ([Figure 1C](#)). No implantation metastasis or vascular variants were found ([Figure 2](#)).

The procedure lasted for 240 min, and the estimated blood loss was 50 mL. A total of 34 lymph nodes were retrieved. The lesion was located in the antrum, and there were enlarged lymph nodes; also, there was no visible invasion of the serous layer. The final pathological stage was ypT0N0M0. None of the 34 retrieved lymph nodes ([Figure 1E](#) and [F](#)) showed metastasis.



DOI: 10.4240/wjgs.v15.i9.2063 Copyright ©The Author(s) 2023.

**Figure 2 Images of surgery.** A: The surgical field showing that the spleen in the right side of the patient; B: The surgical field showing that the gallbladder and right lobe of the liver in the left side of the patient; C: The key procedure during surgery: Dissecting station 6 lymph nodes.

## Case 2

The patient accepted laparoscopy-assisted total gastrectomy with standard D2 LND and Roux-en-Y reconstruction. The position of the surgeon and placement of trocars were the same as those in Case 1. No implantation metastasis or vascular variants were found.

The procedure lasted for 168 min, and the estimated blood loss was 50 mL. A total of 34 lymph nodes were retrieved. The lesion was located at the bottom of the gastric body and cardia, and it measured 2.5 cm × 2.3 cm × 0.3 cm. It was identified as poorly differentiated adenocarcinoma invading nerves, vasculature, and fibroadipose tissue in the serous membrane of the stomach wall. The final pathological stage was pT3N3aM0. Eleven of the 34 retrieved lymph nodes showed metastasis (Figure 1I).

## OUTCOME AND FOLLOW-UP

### Case 1

We implemented enhanced recovery after surgery on the patient, and his postoperative course was uneventful. The patient was able to resume drinking water on postoperative day (POD) 3 and eating liquid food on POD 5. Thereafter, he was discharged on POD 9. Eight months after the operation, he is doing well without recurrence.

### Case 2

Without any complication, the patient was discharged on POD 10. Notably, the patient was administered six cycles of postoperative adjuvant chemotherapy with the SOX regimen. The patient had metastasis of supraclavicular lymph nodes in the twelfth postoperative month; however, there has been no sign of local recurrence.

## DISCUSSION

### Literature review

SIT may be caused by a genetic mutation; however, its specific mechanism remains unknown. A study conducted by Reish *et al*[2] suggested that the homozygous *NME7* mutation results in the deletion of amino acids essential for its interaction with the  $\gamma$ -TuRC, which is associated with the impaired left-right asymmetry that manifests as SIT. Although the majority of patients with SIT lead normal lives, a subset of individuals (15%–25%) exhibit accompanying respiratory anomalies (Kartagener syndrome), cardiovascular anomalies (Fallot tetralogy), and digestive anomalies[3]. In addition to these malformations, patients with SIT may also be at an increased risk of cancer due to malfunction of the KIF3 complex [4]. Reports indicate that SIT can be associated with multiple cancers[5], including lung cancer, esophageal cancer, gallbladder cancer, and colon cancer[6–9]. In recent years, laparoscopic radical surgery, including laparoscopic cholecystectomy, laparoscopic colectomy, laparoscopic fundoplication, and laparoscopic gastric band surgery, has increasingly been adopted for cancer patients with SIT[10].

In 1936, Allen[11] described the first case of gastrectomy in a GC patient with SIT. In 2003, the first case of laparoscopic gastrectomy performed on a GC patient with SIT was reported[12], followed by the first case of laparoscopic gastrectomy combined with D2 LND in 2015[10].

In terms of our surgery and summary, we searched PubMed for previously reported cases of GC with SIT in which the patients underwent gastrectomy within the last 11 years (from January 1, 2012 to February 31, 2023). The terms used for topic searches of PubMed were “situs inversus totalis” AND “gastric cancer” or “situs inversus totalis” AND “gastrectomy”. Two cases[13,14] in which gastrectomy was introduced as previous surgery and a case[15] in which a non-cancer patient underwent prophylactic gastrectomy were excluded. Consequently, a total of 33 cases were identified, including the two cases that we had previously introduced (from 30 articles). The detailed profiles of the patients in the reported cases are presented in Table 1. Among the patients in the included cases, 22 were men and 11 were women; the patients were aged 40–84 years. According to the articles identified, modified surgical procedures to cope with anatomical malposition are what surgeons concentrate on the most, including the surgery modality, extent of LND, and

**Table 1** Reported cases of gastric cancer patients with situs inversus totalis in the previous 11 years

Ref.	Age, gender	Abnormal course of vascularity	Surgery modality	Reconstruction	Extent of LND	Surgeon position (trocars placement for robotic surgery)	Operation time (min)	Blood loss (mL)	Discharged on POD	Remarks
Pan <i>et al</i> [25], 2012	52, M	NA	OPG	Billroth I	D2	NA	NA	NA	15	Complication: Mechanical obstruction
Kim <i>et al</i> [18], 2012	47, M	NA	LADG (robotic-assisted)	Billroth II	D1+ $\beta$	Usual side	300	NA	8	
Fujikawa <i>et al</i> [26], 2013	60, F	ALHA from CA	LADG	Billroth I	D1+	Opposite	234	5	8	Abdominal surgery history: Right inguinal hernia repair
Min <i>et al</i> [27], 2013	52, M	CHA from SMA, 2 branches from LGA	LADG	Billroth I	D1+	Usual side	220	100	8	
Min <i>et al</i> [27], 2013	68, M	None	TLDG	Billroth I	D1+	Usual side	117	50	5	Comorbidities: Chronic kidney disease and hypothyroidism
Sumi <i>et al</i> [17], 2014	42, M	LHA from SMA	LADG	Billroth I	D1+ No. 7, 8a, 9	Opposite	313	90	10	
Zhu <i>et al</i> [28], 2015	66, F	None	ODG	Billroth I	D2	Usual side	NA	NA	NA	
Isobe <i>et al</i> [29], 2015	79, F	LHA from AO	OTG splenectomy cholecystectomy	Roux-en-Y	D2	NA	288	150	19	
Ye <i>et al</i> [10], 2015	60, F	None	LADG	Billroth II	D2	Opposite	230	50	8	
Morimoto <i>et al</i> [30], 2015	58, M	None	LATG	Roux-en-Y	D1+ No. 7, 8a, 9	Opposite (except for No. 5, 7, 8a, 9)	359	90	7	
Suh[31], 2017	50, M	None	ODG	NA	D2	NA	180	NA	10	
Kigasawa <i>et al</i> [32], 2017	40, M	None	LADG	Billroth I	D1+	Opposite	284	40	NA	
Alhossaini and Hyung[33], 2017	52, F	None	TLDG (robotic-assisted)	gastroduodenostomy	D1+ No. 7, 8, 9	Opposite	195	30	5	
Cao <i>et al</i> [34], 2017	60, M	RHA from SMA bridged by GDA, LGA from ALHA	TLTG (robotic-assisted)	Roux-en-Y	D2	NA	NA	NA	8	
Gündeş <i>et al</i> [35], 2018	72, F	None	ODG	Billroth II enteroenterostomy	D1	Usual side	150	100	8	

Namikaw <i>et al</i> [36], 2018	66, F	None	OTG	Roux-en-Y	D2	Usual side	375	380	14	Abdominal surgery history: Rectal cancer resection
Dai <i>et al</i> [21], 2018	53, M	NA	TLDG (total robotic)	Billroth II	D2	Usual side	180	50	5	
Shibata <i>et al</i> [37], 2018	79, M	RGEA above RGEV	TLTG	Roux-en-Y	D2 (without splenectomy)	Usual side	232	110	10	
Xue <i>et al</i> [16], 2019	61, M	NA	ODG	Billroth II	D2	Usual side	NA	NA	14	
Ojima <i>et al</i> [38], 2019	80, F	None	LADG (total robotic)	Billroth I	D2	Usual side	260	20	14	Comorbidity: Emphysema
Namikawa <i>et al</i> [39], 2021	74, M	CHA from SMA	TLDG	Roux-en-Y	D2	Opposite	335	20	12	
Abbey <i>et al</i> [19], 2021	69, M	None	LADG (robotic-assisted) intestinal adhesiolysis	Roux-en-Y	D2	Usual side	205	20	15	
Takeno <i>et al</i> [40], 2021	71, F	None	LAPG (robotic-assisted)	Esophagogastrostomy	D1+	Usual side	448	45	10	
Yoshimoto <i>et al</i> [20], 2021	84, M	NA	LATG (robotic-assisted)	Roux-en-Y	D2	Opposite	NA	30	13	
Fujita <i>et al</i> [24], 2022	67, M	CHA from SMA	LADG	Roux-en-Y	D2	Usual side	446	3	14	
Sagawa <i>et al</i> [41], 2022	64, M	LGA from LHA	TLDG (total robotic)	Billroth I	D1+	Usual side	286	44	7	
Katano <i>et al</i> [42], 2022	62, M	Lack of CHA, PHA from SMA, ALHA from LGA, 2 branches from LGV, 3 branches from LGA	TLPG (robotic-assisted) lower esophagectomy	Esophagogastrostomy	D2 (including lower mediastinal LND)	Opposite	296	NA	11	
Lamtur <i>et al</i> [43], 2022	48, F	NA	ODG	Billroth II anastomosis of a part of the transverse colon	NA	Opposite	NA	NA	NA	
Doden <i>et al</i> [44], 2023	74, M	None	LADG	Billroth I	D1+	Opposite	220	100	10	
Huang <i>et al</i> [45], 2023	58, M	None	LADG (3D)	Billroth II	D2	Opposite	220	10	8	
Lee <i>et al</i> [46], 2023	79, F	NA	TLTG (single-port)	Roux-en-Y	D1+	Opposite	269	NA	14	
Present case 1	55, M	None	LATG	Roux-en-Y	D2	Opposite	168	50	10	Comorbidity:

										Hypertension
Present case 2	65, M	None	LADG	Billroth II	D2	Opposite	240	50	9	

POD: Postoperative day; LND: Lymphadenectomy; M: Male; F: Female; NA: Not available; ALHA: Accessory left hepatic artery; CA: Celiac artery; CHA: Common hepatic artery; SMA: Superior mesenteric artery; LGA: Left gastric artery; LHA: Left hepatic artery; AO: Aorta; RHA: Right hepatic artery; GDA: Gastroduodenal artery; RGEA: Right gastroepiploic artery; RGEV: Right gastroepiploic vein; PHA: Proper hepatic artery; LGV: Left gastric vein; ODG: Open distal gastrectomy; OPG: Open proximal gastrectomy; OTG: Open total gastrectomy; LADG: Laparoscopy-assisted distal gastrectomy; LATG: Laparoscopy-assisted total gastrectomy; LAPG: Laparoscopy-assisted proximal gastrectomy; TLDG: Total laparoscopy distal gastrectomy; TLPG: Total laparoscopy proximal gastrectomy; TLTG: Total laparoscopy gastrectomy.

position of the surgeon.

### **Surgery modality**

Surgical modality selection is a significant concern when treating GC in patients with SIT. Minimally invasive surgery is usually preferred due to its less invasive nature and shorter associated recovery time. However, in 8 of the 33 cases collected from PubMed, the patients underwent open gastrectomy. Surgeons performing open surgery claimed that they took the patient's high body fat and anatomical difficulties of total visceral inversion into consideration comprehensively. Furthermore, laparotomy could provide not only a broader field of vision but also a pathway to insert an applicator for intraoperative radiotherapy[16]. In contrast, laparoscopic surgery is helpful for visualizing vessels and nerves due to the magnified operating field[17]. The application of radical laparoscopic surgery in patients with SIT may have several benefits (such as reduced trauma, milder postoperative pain, and shorter recovery times) compared to traditional open surgical procedures. From our perspectives, identifying anatomical structures may prove problematic; however, an experienced surgeon may overcome this challenge to a certain extent. So, we opted for laparoscopic surgery in our two cases. Nonetheless, laparoscopic gastrectomy requires much expertise, and each patient should be evaluated on an individual basis. The choice of surgical modality should depend on the doctor's technique and the patient's physical condition.

Robotic surgery has been a promising approach for GC patients with SIT. The first case of a GC patient with SIT treated by robotic-assisted distal gastrectomy was reported in 2012[18], and ten cases have been reported so far. Robotic surgery can reduce the errors caused by the cooperation of multiple operators in laparoscopic surgery[19]. Yoshimoto *et al*[20] concluded that compared to conventional laparoscopic surgery, robotic surgery has two main advantages: (1) It circumvents the need to consider the standing position; and (2) The operator can handle the devices with the nondominant hand with almost the same accuracy as the dominant hand. Although robotic surgery can sew faster and remove deep lymph nodes more easily, it lacks tactility and takes longer[21]. Long-term and short-term comparative studies have shown that robotic gastrectomy is as acceptable as laparoscopic gastrectomy in surgical and oncologic outcomes for normal GC patients[22,23]. Further evidence is needed to fully evaluate the efficacy of robotic surgery in GC patients with SIT.

### **Extent of LND**

Regional LND is an essential requirement for radical gastrectomy, with D2 surgery being widely recognized as the standard surgical procedure for advanced GC. D2 LND is performed under an extrasac that originates from the anterior transverse mesenteric lobe to the pancreatic capsule. We performed complete resection of the anterior transverse mesangial lobe, greater omentum, pancreatic capsule, and hepatogastric ligaments, ligation of the blood vessels involved at the root, and thorough removal of the corresponding second station lymph nodes according to the tumor site.

Therefore, it is crucial to differentiate the relevant important blood vessels (including hepatoduodenal ligaments, abdominal trunk, common hepatic artery (CHA), splenic artery initiation, superior mesenteric vein, *etc.*). However, in the case of SIT, the occurrence of vascular anomalies is not common. Out of the 33 cases that are reviewed in the literature, 10 involving vascular anomalies have been described. The most common anomaly observed was that the CHA exited from the superior mesenteric artery, with three cases reported. The solution proposed by Fujita *et al*[24] re-confirmed the anatomical landmarks of LND in the suprapancreatic area as the upper borders of the pancreas, portal vein, and left gastric artery from the celiac axis. Therefore, during the preoperative evaluation period, sufficient imaging examination is necessary to detect the normal anatomy and variations in the branching pattern of the celiac trunk, which could significantly reduce the duration of surgery and the intraoperative blood loss. With the advent of imaging technology, the three-dimensional reconstruction image of CT angiography (3DCTA) has been widely used to confirm surgical anatomy. Several studies have reported that 3DCTA adequately demonstrates vascular anomalies. In our cases, a contrast-enhanced CT scan was performed, and no abnormal course of vascularity was found in this process.

### Position of the surgeon

The appropriate surgical positioning for surgeons during GC surgery in patients with SIT has been a topic of ongoing debate. To this day, there is still no definitive conclusion on the optimal standing position of the surgeon during this type of surgery. The surgical positioning of the surgeon may be related to the surgical modality. In open surgeries, the surgeon's position was reported in five out of eight cases, with four of them being performed on the patient's left side (the usual side). These surgical procedures were carried out according to the principle of precise manipulation of local lymph nodes and smooth transition of the cleaned area. The optimal positioning for the surgeon during laparoscopic gastrectomy in patients with SIT is still controversial. It is natural to think that it is better for the surgeon to stand in the reverse position due to the left-right reversal of the positions of organs. Out of 15 counted laparoscopic gastrectomy cases, 11 were performed on the patient's right side (opposite to the usual side). However, a few surgeons hold a different view, as they believe that standing on the opposite side from where they normally stand would require them to dissect with their nondominant hand, leading to inevitable difficulties. Nevertheless, we still chose to stand on the opposite side. Thanks to our sophisticated skills and well-coordinated team, the procedure was smooth and without complications.

Robotic surgery provides a new solution to this obstacle. In robotic gastrectomy, the robotic arm performs most of the operation, enabling the surgeon to perform the operation without changing their position or experiencing any confusion resulting from the patient's reversed anatomy. This technology may overcome the difficulties encountered in laparoscopic gastrectomy for patients with SIT, and it could be considered a safe and effective surgical approach.

Furthermore, we summarize the clinical features, estimated blood loss, surgery time, and prognoses of 31 reported cases of GC with SIT. The majority of cases occurred in middle-aged and elderly men, and these cases were reported in Japan, China, and Korea (15, 10, and 6 cases, respectively). However, there is a paucity of studies on the correlation and regional differences between GC and SIT. The main treatment methods were surgical resection, reconstruction, and chemotherapy, which effectively improved patients' survival. Combining the experiences of others and ours, our suggestion is that, first of all, a sufficient preoperative imaging evaluation is recommended as it can help predict abnormal anatomical positions and vascular directions. Contrast-enhanced abdominal CT can help the surgeon initially predict the abnormal anatomical positions and vascular directions, and this helps to clarify the problem and avoid accidental injury during surgery. Second, the operation should be performed patiently and carefully. Careful confirmation of the patient's anatomy and vascular location can mitigate intraoperative complications. After postoperative discussions, we all agreed on the fact that the main difficulties facing surgery are the patient's vascular anatomy and precision of manipulation. Finally, it is obvious that an experienced surgical team is a necessity. A sophisticated surgeon and a well-coordinated team can alleviate the awkwardness caused by abnormal anatomical positions, enabling the operation to be completed smoothly.

## CONCLUSION

In conclusion, laparoscopic gastrectomy with D2 LND should be considered an accessible, safe, and curative procedure for advanced GC with SIT.

## FOOTNOTES

**Author contributions:** Liu HB and Peng CW contributed to manuscript writing and editing, and data collection; Cai XP and Lu Z contributed to data analysis; Xiong B and Peng CW contributed to conceptualization and supervision; all authors have read and approved the final manuscript.

**Supported by** National Natural Science Foundation of China, No. 81401515; Zhongnan Hospital of Wuhan University Science Technology and Innovation Seed Fund, No. znp2018030; "351Talent Project (LuoJia Young Scholars)" of Wuhan University.

**Informed consent statement:** Informed written consent was obtained from both patients for the publication of this case report.

**Conflict-of-interest statement:** All the authors report no relevant conflicts of interest for this article.

**CARE Checklist (2016) statement:** The authors have read the CARE Checklist (2016), and the manuscript was prepared and revised according to the CARE Checklist (2016).

**Open-Access:** This article is an open-access article that was selected by an in-house editor and fully peer-reviewed by external reviewers. It is distributed in accordance with the Creative Commons Attribution NonCommercial (CC BY-NC 4.0) license, which permits others to distribute, remix, adapt, build upon this work non-commercially, and license their derivative works on different terms, provided the original work is properly cited and the use is non-commercial. See: <https://creativecommons.org/licenses/by-nc/4.0/>

**Country/Territory of origin:** China

**ORCID number:** Hong-Bo Liu 0000-0002-4356-7555; Zhao Lu 0000-0002-1489-205x; Chun-Wei Peng 0000-0001-6349-1618.

**S-Editor:** Lin C

**L-Editor:** Wang TQ

**P-Editor:** Wu RR

## REFERENCES

- Eitler K, Bibok A, Telkes G. Situs Inversus Totalis: A Clinical Review. *Int J Gen Med* 2022; **15**: 2437-2449 [PMID: 35264880 DOI: 10.2147/ijgm.S295444]
- Reish O, Aspit L, Zouella A, Roth Y, Polak-Charcon S, Baboushkin T, Benyamini L, Scheetz TE, Mussaffi H, Sheffield VC, Parvari R. A Homozygous Nme7 Mutation Is Associated with Situs Inversus Totalis. *Hum Mutat* 2016; **37**: 727-731 [PMID: 27060491 DOI: 10.1002/humu.22998]
- Aziret M, Karaman K, Ercan M, Bostancı EB, Akoğlu M. Laparoscopic sleeve gastrectomy on a morbidly obese patient with situs inversus totalis: A case study and systematic review of the literature. *Obes Res Clin Pract* 2017; **11**: 144-151 [PMID: 28034698 DOI: 10.1016/j.orcp.2016.12.003]
- Haruki T, Maeta Y, Nakamura S, Sawata T, Shimizu T, Kishi K, Miyasaka S, Maeta H, Morimoto K, Taniguchi I. Advanced cancer with situs inversus totalis associated with KIF3 complex deficiency: report of two cases. *Surg Today* 2010; **40**: 162-166 [PMID: 20107958 DOI: 10.1007/s00595-009-4005-x]
- Liu XS, Wu RM, Wan HB, Chen YJ, Tan F, Zeng DB, Yang Y, Pei ZJ. Situs Inversus Totalis on (18)F-FDG PET/CT: A Case Report and a Literature Review. *Front Med (Lausanne)* 2022; **9**: 840795 [PMID: 35355611 DOI: 10.3389/fmed.2022.840795]
- Chen LJ, Qiu X, Sun H, Xu PF, Yin FM, Xu LJ. Two types of lung cancer with situs inversus totalis: a case report and review of the literature. *J Int Med Res* 2020; **48**: 300060520944107 [PMID: 33106071 DOI: 10.1177/0300060520944107]
- Feng Q, Yao J, Lu S. Gastrointestinal: Situs inversus totalis with esophageal cancer. *J Gastroenterol Hepatol* 2020; **35**: 709 [PMID: 31770819 DOI: 10.1111/jgh.14904]
- Rungsakulkij N, Tangtawe P. Fluorescence cholangiography during laparoscopic cholecystectomy in a patient with situs inversus totalis: a case report and literature review. *BMC Surg* 2017; **17**: 43 [PMID: 28427402 DOI: 10.1186/s12893-017-0242-x]
- Xu Q, Liu W, Lin C, Dang Y. Transverse colon cancer with obstruction in a patient with situs inversus totalis: A case report and review of literature. *Asian J Surg* 2020; **43**: 1186-1188 [PMID: 32994114 DOI: 10.1016/j.asjsur.2020.09.003]
- Ye MF, Tao F, Xu GG, Sun AJ. Laparoscopy-assisted distal gastrectomy for advanced gastric cancer with situs inversus totalis: A case report. *World J Gastroenterol* 2015; **21**: 10246-10250 [PMID: 26401091 DOI: 10.3748/wjg.v21.i35.10246]
- Allen FRWK. A Case of Malignant Tumour of the Stomach in a Male with Transposition of the Viscera. *Ind Med Gaz* 1936; **71**: 32 [PMID: 29012980]
- Yamaguchi S, Orita H, Yamaoka T, Mii S, Sakata H, Hashizume M. Laparoscope-assisted distal gastrectomy for early gastric cancer in a 76-year-old man with situs inversus totalis. *Surg Endosc* 2003; **17**: 352-353 [PMID: 12404047 DOI: 10.1007/s00464-002-4504-y]
- Sumi Y, Tomono A, Suzuki S, Kuroda D, Kakeji Y. Laparoscopic hemicolectomy in a patient with situs inversus totalis after open distal gastrectomy. *World J Gastrointest Surg* 2013; **5**: 22-26 [PMID: 23515492 DOI: 10.4240/wjgs.v5.i2.22]
- Zhou P, Lan Y, Qin X, Huang X, Zeng F. Bilateral chylothorax and pericardial effusion following subtotal gastrectomy in a patient with situs inversus totalis. *ANZ J Surg* 2019; **89**: E480-E481 [PMID: 30192067 DOI: 10.1111/ans.14783]
- Sivakumar J, Crosthwaite G. Prophylactic laparoscopic total gastrectomy in a patient with situs inversus totalis. *J Surg Case Rep* 2021; **2021**: rjaa475 [PMID: 34025963 DOI: 10.1093/jscr/rjaa475]
- Xue W, Li Y, Zhao Z, Li W, Wang S, Zhang M, Liu T, Wang M. Solitary adrenal metastasis from advanced gastric cancer invading duodenal bulb with situs inversus totalis: A case report. *Medicine (Baltimore)* 2019; **98**: e15244 [PMID: 30985730 DOI: 10.1097/md.00000000000015244]
- Sumi Y, Maehara R, Matsuda Y, Yamashita K, Nakamura T, Suzuki S, Kuroda D, Kakeji Y. Laparoscopy-assisted distal gastrectomy in a patient with situs inversus totalis. *JSLS* 2014; **18**: 314-318 [PMID: 24960499 DOI: 10.4293/108680813x13693422521953]
- Kim HB, Lee JH, Park DJ, Lee HJ, Kim HH, Yang HK. Robot-assisted distal gastrectomy for gastric cancer in a situs inversus totalis patient. *J Korean Surg Soc* 2012; **82**: 321-324 [PMID: 22563541 DOI: 10.4174/jkss.2012.82.5.321]
- Abbey E, Yang F, Qi L, Wu JJ, Tong L, Zhen Z. Situs inversus totalis patients with gastric cancer: Robotic surgery the standard of treatment? - A case report. *Int J Surg Case Rep* 2021; **81**: 105818 [PMID: 33887833 DOI: 10.1016/j.ijscr.2021.105818]
- Yoshimoto T, Yoshikawa K, Tokunaga T, Nishi M, Takasu C, Kashiwara H, Nakasu C, Shimada M. Robotic-assisted total gastrectomy in a patient with gastric cancer associated with situs inversus totalis: With video. *Asian J Endosc Surg* 2021; **14**: 297-300 [PMID: 32875706 DOI: 10.1111/ases.12860]
- Dai HB, Wang ZC, Feng XB, Wang G, Li WY, Hang CH, Jiang ZW. Case report about a successful full robotic radical gastric cancer surgery with intracorporeal robot-sewn anastomosis in a patient with situs inversus totalis and a two-and-a-half-year follow-up study. *World J Surg Oncol* 2018; **16**: 41 [PMID: 29499701 DOI: 10.1186/s12957-018-1311-z]

- 22 **Shen W**, Xi H, Wei B, Cui J, Bian S, Zhang K, Wang N, Huang X, Chen L. Robotic vs laparoscopic gastrectomy for gastric cancer: comparison of short-term surgical outcomes. *Surg Endosc* 2016; **30**: 574-580 [PMID: 26208497 DOI: 10.1007/s00464-015-4241-7]
- 23 **Obama K**, Kim YM, Kang DR, Son T, Kim HI, Noh SH, Hyung WJ. Long-term oncologic outcomes of robotic gastrectomy for gastric cancer compared with laparoscopic gastrectomy. *Gastric Cancer* 2018; **21**: 285-295 [PMID: 28639136 DOI: 10.1007/s10120-017-0740-7]
- 24 **Fujita S**, Etoh T, Kono Y, Fujishima H, Suzuki K, Ninomiya S, Ueda Y, Shiroshta H, Shiraishi N, Inomata M. Laparoscopic distal gastrectomy for advanced gastric cancer with situs inversus totalis: a case report. *Surg Case Rep* 2022; **8**: 182 [PMID: 36163524 DOI: 10.1186/s40792-022-01532-4]
- 25 **Pan K**, Zhong D, Miao X, Liu G, Jiang Q, Liu Y. Situs inversus totalis with carcinoma of gastric cardia: a case report. *World J Surg Oncol* 2012; **10**: 263 [PMID: 23227934 DOI: 10.1186/1477-7819-10-263]
- 26 **Fujikawa H**, Yoshikawa T, Aoyama T, Hayashi T, Cho H, Ogata T, Shirai J, Oshima T, Yukawa N, Rino Y, Masuda M, Tsuburaya A. Laparoscopy-assisted distal gastrectomy for an early gastric cancer patient with situs inversus totalis. *Int Surg* 2013; **98**: 266-270 [PMID: 23971782 DOI: 10.9738/intsurg-d-13-00054.1]
- 27 **Min SH**, Lee CM, Jung HJ, Lee KG, Suh YS, Shin CI, Kim HH, Yang HK. Laparoscopic distal gastrectomy in a patient with situs inversus totalis: a case report. *J Gastric Cancer* 2013; **13**: 266-272 [PMID: 24511424 DOI: 10.5230/jgc.2013.13.4.266]
- 28 **Zhu H**, Yang K, Hu JK. Gastrectomy for gastric carcinoma with situs inversus totalis: case report and literature review. *Hippokratia* 2015; **19**: 360-362 [PMID: 27703309]
- 29 **Isobe T**, Ogata S, Kaku H, Hashimoto K, Kizaki J, Matono S, Ishikawa H, Murakami N, Kinugasa T, Aoyagi K, Akagi Y. A Patient with Advanced Gastric Cancer and Situs Inversus Totalis: Report of a Case. *Kurume Med J* 2015; **61**: 73-76 [PMID: 26460309 DOI: 10.2739/kurumemedj.MS64006]
- 30 **Morimoto M**, Hayakawa T, Kitagami H, Tanaka M, Matsuo Y, Takeyama H. Laparoscopic-assisted total gastrectomy for early gastric cancer with situs inversus totalis: report of a first case. *BMC Surg* 2015; **15**: 75 [PMID: 26087838 DOI: 10.1186/s12893-015-0059-4]
- 31 **Suh BJ**. A Case of Gastric Cancer with Situs Inversus Totalis. *Case Rep Oncol* 2017; **10**: 130-135 [PMID: 28203176 DOI: 10.1159/000456539]
- 32 **Kigasawa Y**, Takeuchi H, Kawakubo H, Fukuda K, Nakamura R, Takahashi T, Wada N, Kitagawa Y. Laparoscopy-assisted distal gastrectomy in a case of gastric cancer with situs inversus totalis: a case report. *Asian J Endosc Surg* 2017; **10**: 47-50 [PMID: 27739194 DOI: 10.1111/ases.12326]
- 33 **Alhossaini R**, Hyung WJ. Robotic Assisted Distal Gastrectomy for Gastric Cancer in a Patient with Situs Inversus Totalis: with Video. *J Gastrointest Surg* 2017; **21**: 2144-2145 [PMID: 28900793 DOI: 10.1007/s11605-017-3576-x]
- 34 **Cao Y**, Li J, Shen L, Wang J, Xia Z, Tao K, Wang G, Cai K. Gastric cancer in a situs inversus totalis patient with multiple intestinal and vessel variations related to gastrectomy surgery: A case report and literature review. *Medicine (Baltimore)* 2017; **96**: e8209 [PMID: 28953685 DOI: 10.1097/md.00000000000008209]
- 35 **Gündeş E**, Çetin DA, Aday U, Çiyiltepe H, Bozdağ E, Senger AS, Gülmez S, Değer KC, Uzun O, Polat E. Gastric cancer with situs inversus totalis: does it really create difficulties for surgeons? *Prz Gastroenterol* 2018; **13**: 47-51 [PMID: 29657611 DOI: 10.5114/pg.2018.74563]
- 36 **Namikawa T**, Tsuda S, Fujisawa K, Iwabu J, Uemura S, Tsujii S, Maeda H, Kitagawa H, Kobayashi M, Hanazaki K. Superficial Spreading-type Gastric Cancer with Situs Inversus Totalis. *In Vivo* 2018; **32**: 685-689 [PMID: 29695579 DOI: 10.21873/in vivo.11294]
- 37 **Shibata K**, Kawamura H, Ichikawa N, Shibuya K, Yoshida T, Ohno Y, Homma S, Taketomi A. Laparoscopic total gastrectomy for advanced gastric cancer in a patient with situs inversus totalis. *Asian J Endosc Surg* 2018; **11**: 39-42 [PMID: 28677888 DOI: 10.1111/ases.12404]
- 38 **Ojima T**, Nakamura M, Nakamori M, Yamaue H. Robotic distal gastrectomy with D2 Lymphadenectomy for gastric cancer in a patient with situs inversus totalis. *Surg Oncol* 2019; **30**: 98-99 [PMID: 31500795 DOI: 10.1016/j.suronc.2019.06.007]
- 39 **Namikawa T**, Maeda M, Yokota K, Tanioka N, Iwabu J, Munekage M, Uemura S, Maeda H, Kitagawa H, Nagata Y, Kobayashi M, Hanazaki K. Laparoscopic Distal Gastrectomy for Synchronous Gastric Cancer and Gastrointestinal Stromal Tumor With Situs Inversus Totalis. *In Vivo* 2021; **35**: 913-918 [PMID: 33622883 DOI: 10.21873/in vivo.12331]
- 40 **Takeno A**, Masuzawa T, Katsuyama S, Murakami K, Kawai K, Katsura Y, Ohmura Y, Kagawa Y, Takeda Y, Hata T, Murata K. Robotic-assisted proximal gastrectomy using the double-flap technique for early gastric cancer with situs inversus totalis: a case report. *Surg Case Rep* 2021; **7**: 172 [PMID: 34337695 DOI: 10.1186/s40792-021-01262-z]
- 41 **Sagawa H**, Ito S, Hayakawa S, Ueno S, Okubo T, Tanaka T, Ogawa R, Takahashi H, Matsuo Y, Mitsui A, Kimura M, Takiguchi S. Robotic distal gastrectomy for gastric cancer in a patient with situs inversus totalis and a vascular anomaly. *Int Cancer Conf J* 2022; **11**: 253-260 [PMID: 36186219 DOI: 10.1007/s13691-022-00554-x]
- 42 **Katano K**, Inaki N, Yamaguchi T, Saito H, Shimada M, Terai S, Okamoto K, Moriyama H, Kinoshita J, Nakamura K, Ninomiya I. Robot-assisted transhiatal lower esophagectomy and proximal gastrectomy for Siewert type II advanced esophagogastric junction cancer with situs inversus totalis: a case report. *Surg Case Rep* 2022; **8**: 40 [PMID: 35286497 DOI: 10.1186/s40792-022-01393-x]
- 43 **Lamtur Y**, Gharde P, Gajbhiye V, Nagtode T, Mastud K, Kulkarni V, Patel D. Adenocarcinoma of the Stomach With Situs Inversus Totalis: A Rare Case. *Cureus* 2022; **14**: e31538 [PMID: 36540458 DOI: 10.7759/cureus.31538]
- 44 **Doden K**, Watanabe T, Yoshimura T, Shibata S, Yamagishi Y, Kimura K, Iwaki Y, Kawaguchi M, Kato H, Inaki N. Indocyanine green fluorescence imaging-guided laparoscopy-assisted distal gastrectomy for early gastric cancer in a patient with situs inversus totalis: A case report with video. *Asian J Endosc Surg* 2023; **16**: 95-100 [PMID: 35799403 DOI: 10.1111/ases.13105]
- 45 **Huang S**, Lin W, Qiu X. Three-dimensional laparoscopic treatment of situs inversus totalis combined with gastric cancer: Case report with review of literature. *J Minim Access Surg* 2023; **19**: 147-151 [PMID: 36722540 DOI: 10.4103/jmas.jmas\_311\_21]
- 46 **Lee IY**, Lee D, Lee CM. Case Report: Single-port laparoscopic total gastrectomy for gastric cancer in patient with situs inversus totalis. *Front Oncol* 2023; **13**: 1094053 [PMID: 36741026 DOI: 10.3389/fonc.2023.1094053]



Published by **Baishideng Publishing Group Inc**  
7041 Koll Center Parkway, Suite 160, Pleasanton, CA 94566, USA

**Telephone:** +1-925-3991568

**E-mail:** [bpgoffice@wjgnet.com](mailto:bpgoffice@wjgnet.com)

**Help Desk:** <https://www.f6publishing.com/helpdesk>

<https://www.wjgnet.com>

