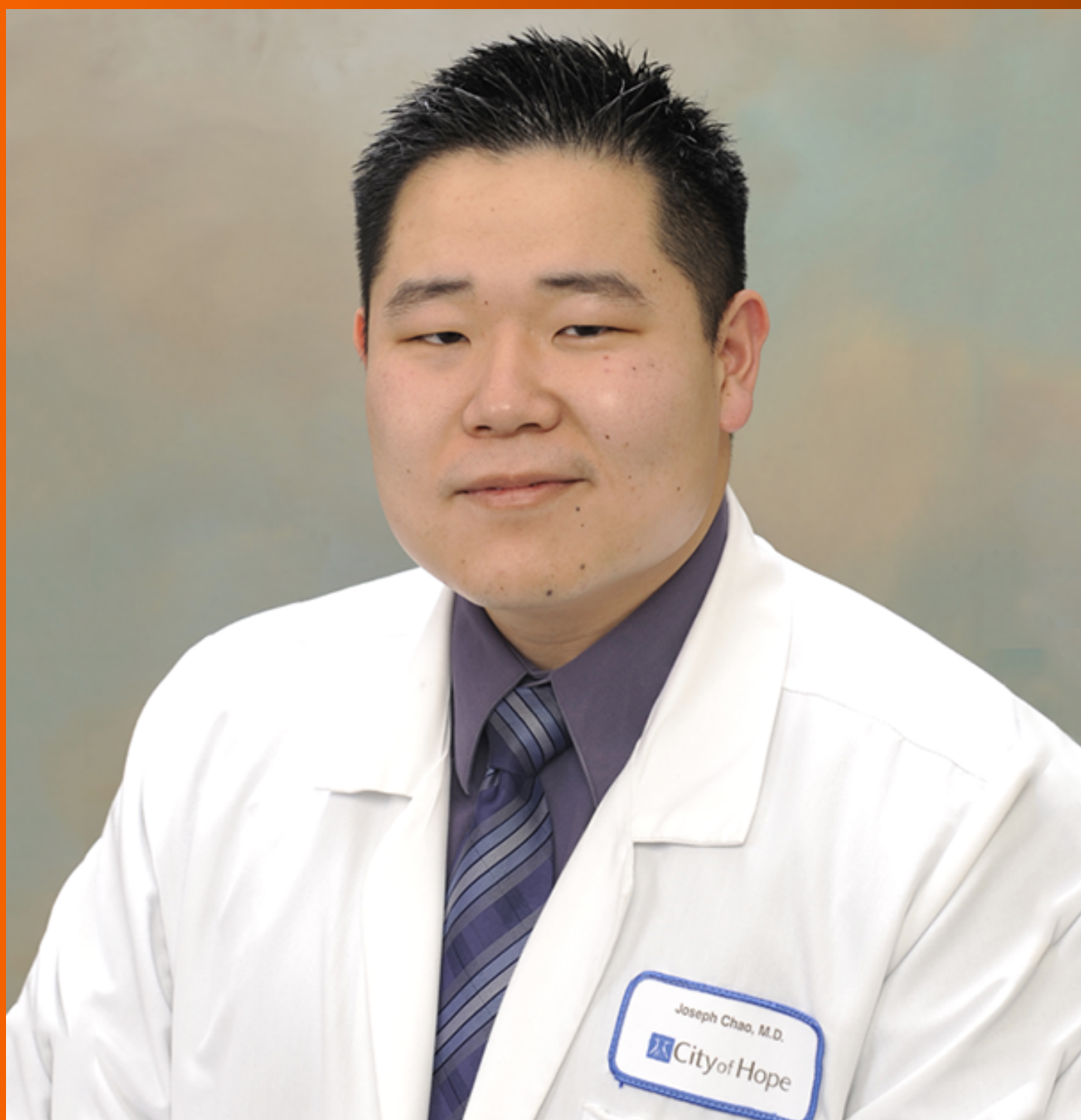


World Journal of *Gastrointestinal Oncology*

World J Gastrointest Oncol 2019 November 15; 11(11): 933-1091



**EDITORIAL**

- 933** New era for pancreatic endoscopic ultrasound: From imaging to molecular pathology of pancreatic cancer
Archibugi L, Testoni SGG, Redegalli M, Petrone MC, Reni M, Falconi M, Doglioni C, Capurso G, Arcidiacono PG

REVIEW

- 946** Endothelial cells in colorectal cancer
Chen WZ, Jiang JX, Yu XY, Xia WJ, Yu PX, Wang K, Zhao ZY, Chen ZG
- 957** Non-coding RNA in drug resistance of gastric cancer
Luo YJ, Huang QM, Ren Y, Liu ZL, Xu CF, Wang H, Xiao JW

ORIGINAL ARTICLE**Basic Study**

- 971** Calponin 3 promotes invasion and drug resistance of colon cancer cells
Nair VA, Al-khayyal NA, Sivaperumal S, Abdel-Rahman WM
- 983** Eight key long non-coding RNAs predict hepatitis virus positive hepatocellular carcinoma as prognostic targets
Huang ZL, Li W, Chen QF, Wu PH, Shen LJ

Case Control Study

- 998** Toll-like receptor 9 polymorphisms and *Helicobacter pylori* influence gene expression and risk of gastric carcinogenesis in the Brazilian population.
Susi MD, Lourenço Caroline DM, Rasmussen LT, Payão SLM, Rossi AFT, Silva AE, Oliveira-Cucolo JGD

Retrospective Cohort Study

- 1011** Old vs new: Risk factors predicting early onset colorectal cancer
Syed AR, Thakkar P, Horne ZD, Abdul-Baki H, Kochhar G, Farah K, Thakkar S
- 1021** Oral chemotherapy for second-line treatment in patients with gemcitabine-refractory advanced pancreatic cancer
Park SJ, Kim H, Shin K, Lee MA, Hong TH
- 1031** Revisiting oral fluoropyrimidine with cetuximab in metastatic colorectal cancer: Real-world data in Chinese population
Lam KO, Fu MC, Lau KS, Lam KM, Choi CW, Chiu WH, Yuen CM, Kwok LH, Tam FK, Chan WL, Chan SY, Ho PY, Leung TW, Lee HF

Retrospective Study

- 1043** Validation and head-to-head comparison of four models for predicting malignancy of intraductal papillary mucinous neoplasm of the pancreas: A study based on endoscopic ultrasound findings
Hua J, Zhang B, Yang XJ, Zhang YY, Wei MY, Liang C, Meng QC, Liu J, Yu XJ, Xu J, Shi S
- 1054** Endoscopic full-thickness resection for treating small tumors originating from the muscularis propria in the gastric fundus: An improvement in technique over 15 years
Ge N, Hu JL, Yang F, Yang F, Sun SY

Observational Study

- 1065** Clinical significance of *MLH1/MSH2* for stage II/III sporadic colorectal cancer
Wang SM, Jiang B, Deng Y, Huang SL, Fang MZ, Wang Y

META-ANALYSIS

- 1081** Efficacy of hybrid minimally invasive esophagectomy *vs* open esophagectomy for esophageal cancer: A meta-analysis
Yang J, Chen L, Ge K, Yang JL

ABOUT COVER

Editorial Board Member of *World Journal of Gastrointestinal Oncology*, Joseph Chao, MD, Assistant Professor, Medical Oncology and Therapeutics Research, City of Hope Comprehensive Cancer Center, Duarte, CA 91010, United States

AIMS AND SCOPE

The primary aim of *World Journal of Gastrointestinal Oncology* (*WJGO*, *World J Gastrointest Oncol*) is to provide scholars and readers from various fields of gastrointestinal oncology with a platform to publish high-quality basic and clinical research articles and communicate their research findings online.

WJGO mainly publishes articles reporting research results and findings obtained in the field of gastrointestinal oncology and covering a wide range of topics including islet cell adenoma, liver cell adenoma, adenomatous polyposis coli, appendiceal neoplasms, bile duct neoplasms, biliary tract neoplasms, hepatocellular carcinoma, islet cell carcinoma, pancreatic ductal carcinoma, cecal neoplasms, colonic neoplasms, colorectal neoplasms, hereditary nonpolyposis colorectal neoplasms, common bile duct neoplasms, duodenal neoplasms, esophageal neoplasms, gallbladder neoplasms, etc.

INDEXING/ABSTRACTING

The *WJGO* is now indexed in Science Citation Index Expanded (also known as SciSearch®), PubMed, and PubMed Central. The 2019 edition of Journal Citation Reports® cites the 2018 impact factor for *WJGO* as 2.758 (5-year impact factor: 3.220), ranking *WJGO* as 52 among 84 journals in gastroenterology and hepatology (quartile in category Q3), and 131 among 229 journals in oncology (quartile in category Q3).

RESPONSIBLE EDITORS FOR THIS ISSUE

Responsible Electronic Editor: *Li-Li Qi*
Proofing Production Department Director: *Yun-Xiaojuan Wu*

NAME OF JOURNAL

World Journal of Gastrointestinal Oncology

ISSN

ISSN 1948-5204 (online)

LAUNCH DATE

February 15, 2009

FREQUENCY

Monthly

EDITORS-IN-CHIEF

Monjur Ahmed, Rosa M Jimenez Rodriguez, Pashtoon Kasi

EDITORIAL BOARD MEMBERS

<https://www.wjgnet.com/1948-5204/editorialboard.htm>

EDITORIAL OFFICE

Jin-Lei Wang, Director

PUBLICATION DATE

November 15, 2019

COPYRIGHT

© 2019 Baishideng Publishing Group Inc

INSTRUCTIONS TO AUTHORS

<https://www.wjgnet.com/bpg/gerinfo/204>

GUIDELINES FOR ETHICS DOCUMENTS

<https://www.wjgnet.com/bpg/GerInfo/287>

GUIDELINES FOR NON-NATIVE SPEAKERS OF ENGLISH

<https://www.wjgnet.com/bpg/gerinfo/240>

PUBLICATION MISCONDUCT

<https://www.wjgnet.com/bpg/gerinfo/208>

ARTICLE PROCESSING CHARGE

<https://www.wjgnet.com/bpg/gerinfo/242>

STEPS FOR SUBMITTING MANUSCRIPTS

<https://www.wjgnet.com/bpg/GerInfo/239>

ONLINE SUBMISSION

<https://www.f6publishing.com>



Retrospective Cohort Study

Old vs new: Risk factors predicting early onset colorectal cancer

Aslam R Syed, Payal Thakkar, Zachary D Horne, Heitham Abdul-Baki, Gursimran Kochhar, Katie Farah, Shyam Thakkar

ORCID number: Aslam R Syed (0000-0002-6159-7221); Payal Thakkar (0000-0002-4623-4801); Zachary D. Horne (0000-0002-7668-6200); Heitham Abdul-Baki (0000-0002-9050-0142); Gursimran Kochhar (0000-0002-0597-2760); Katie Farah (0000-0002-6633-4535); Shyam Thakkar (0000-0001-8671-9961).

Author contributions: Syed AR, Farah K, Thakkar S performed the research; Abdul-Baki H, Horne ZD analyzed the data; Syed A, Thakkar P, Thakkar S wrote the paper and Thakkar P, Kochhar G, Thakkar S critically revised the manuscript for important intellectual content.

Institutional review board

statement: Clinical research in this study was supported by the Allegheny Research Singer Institute, and was exempt from full review, and was approved for a quality improvement study.

Informed consent statement:

Research described here did not involve humans, and only reported de-identified patient information. All analyzed data was omitted or anonymized.

Conflict-of-interest statement: This article and all authors declare no conflicts of interests.

Data sharing statement:

The original anonymous dataset is available on request from the first author at aslam.syed@ahn.org.

STROBE statement: The authors have read the STROBE Statement –

Aslam R Syed, Heitham Abdul-Baki, Gursimran Kochhar, Katie Farah, Shyam Thakkar, Division of Gastroenterology, Allegheny Health Network, Pittsburgh, PA 15212, United States

Payal Thakkar, Allegheny Singer Research Institute, Allegheny Health Network, Pittsburgh, PA 15212, United States

Zachary D Horne, Division of Radiation Oncology, Allegheny Health Network Cancer Institute, Pittsburgh, PA 15212, United States

Corresponding author: Shyam Thakkar, MD, Professor, Division of Gastroenterology and Hepatology, Allegheny Health Network, 1307 Federal Street, Suite 301, Pittsburgh, PA 15212, United States. shyam.thakkar@ahn.org

Telephone: +1-412-3598061

Fax: +1-412-4422158

Abstract

BACKGROUND

Colorectal cancer (CRC) is the second leading cause of all cancer related deaths in the United States and Europe. Although the incidence has been decreasing for individuals' ≥ 50 , it has been on the rise for individuals < 50 .

AIM

To identify potential risk factors for early-onset CRC.

METHODS

A population-based cohort analysis using a national database, Explorys, screened all patients with an active electronic medical record from January 2012 to December 2016 with a diagnosis of CRC. Subgroups were stratified based on age (25 – 49 years *vs* ≥ 50 years). Demographics, comorbidities, and symptom profiles were recorded and compared between both age groups. Furthermore, the younger group was also compared with a control group consisting of individuals aged 25-49 years within the same timeframe without a diagnosis of CRC. Twenty-data points for CRC related factors were analyzed to identify potential risk factors specific to early-onset CRC.

RESULTS

A total of 68860 patients were identified with CRC, of which 5710 (8.3%) were younger than 50 years old, with 4140 (73%) between 40-49 years of age. Multivariable analysis was reported using odds ratio (OR) with 95%CI and demonstrated that several factors were associated with an increased risk of CRC in the early-onset group versus the later-onset group. These factors included:

checklist of items, and the manuscript was prepared and revised according to the STROBE Statement – checklist of items.

Open-Access: This article is an open-access article which was selected by an in-house editor and fully peer-reviewed by external reviewers. It is distributed in accordance with the Creative Commons Attribution Non Commercial (CC BY-NC 4.0) license, which permits others to distribute, remix, adapt, build upon this work non-commercially, and license their derivative works on different terms, provided the original work is properly cited and the use is non-commercial. See: <http://creativecommons.org/licenses/by-nc/4.0/>

Manuscript source: Invited manuscript

Received: February 27, 2019

Peer-review started: February 27, 2019

First decision: June 4, 2019

Revised: August 1, 2019

Accepted: October 3, 2019

Article in press: October 3, 2019

Published online: November 15, 2019

P-Reviewer: Hu X

S-Editor: Wang JL

L-Editor: A

E-Editor: Li X



African-American race (OR 1.18, 95%CI: 1.09-1.27, $P < 0.001$), presenting symptoms of abdominal pain (OR 1.82, 95%CI: 1.72-1.92, $P < 0.001$), rectal pain (OR 1.50, 95%CI: 1.28-1.77, $P < 0.001$), altered bowel function (OR 1.12, 95%CI: 1.05-1.19, $P = 0.0005$), having a family history of any cancer (OR 1.78, 95%CI: 1.67-1.90, $P < 0.001$), gastrointestinal (GI) malignancy (OR 2.36, 95%CI: 2.18-2.55, $P < 0.001$), polyps (OR 1.41, 95%CI: 1.08-1.20, $P < 0.001$), and obesity (OR 1.14, 95%CI: 1.08-1.20, $P < 0.001$). Comparing the early-onset cohort versus the control group, factors that were associated with an increased risk of CRC were: male gender (OR 1.34, 95%CI: 1.27-1.41, $P < 0.001$), Caucasian (OR 1.48, 95%CI: 1.40-1.57, $P < 0.001$) and African-American race (OR 1.25, 95%CI: 1.17-1.35, $P < 0.001$), presenting symptoms of abdominal pain (OR 4.73, 95%CI: 4.49-4.98, $P < 0.001$), rectal pain (OR 7.48, 95%CI: 6.42-8.72, $P < 0.001$), altered bowel function (OR 5.51, 95%CI: 5.19-5.85, $P < 0.001$), rectal bleeding (OR 9.83, 95%CI: 9.12-10.6, $P < 0.001$), weight loss (OR 7.43, 95%CI: 6.77-8.15, $P < 0.001$), having a family history of cancer (OR 11.66, 95%CI: 10.97-12.39, $P < 0.001$), GI malignancy (OR 28.67, 95%CI: 26.64-30.86, $P < 0.001$), polyps (OR 8.15, 95%CI: 6.31-10.52, $P < 0.001$), tobacco use (OR 2.46, 95%CI: 2.33-2.59, $P < 0.001$), alcohol use (OR 1.71, 95%CI: 1.62-1.80, $P < 0.001$), presence of colitis (OR 4.10, 95%CI: 3.79-4.43, $P < 0.001$), and obesity (OR 2.88, 95%CI: 2.74-3.04, $P < 0.001$).

CONCLUSION

Pending further investigation, these potential risk factors should lower the threshold of suspicion for early CRC and potentially be used to optimize guidelines for early screening.

Key words: Colorectal cancer; Early-onset colorectal cancer; Colorectal cancer screening; Epidemiology analysis; Colorectal neoplasm; Average-risk screening

©The Author(s) 2019. Published by Baishideng Publishing Group Inc. All rights reserved.

Core tip: Colorectal cancer (CRC) is the second leading cause of all cancer related deaths in the United States. Unfortunately, the incidence of patients with CRC under age 50 is on the rise, reported on average between 8%-10% of all CRC diagnosis. Given the recent guideline modification from the American Cancer Society to propose screening to start at age 45, clinicians need a better understanding on which populations to screen earlier. Our manuscript uniquely outlines potential risk factors for early-onset CRC by comparing diagnosed patients with non-CRC patients, which has not been reported in prior literature.

Citation: Syed AR, Thakkar P, Horne ZD, Abdul-Baki H, Kochhar G, Farah K, Thakkar S. Old vs new: Risk factors predicting early onset colorectal cancer. *World J Gastrointest Oncol* 2019; 11(11): 1011-1020

URL: <https://www.wjgnet.com/1948-5204/full/v11/i11/1011.htm>

DOI: <https://dx.doi.org/10.4251/wjgo.v11.i11.1011>

INTRODUCTION

Colorectal cancer (CRC) is the second most common cancer and second leading cause of cancer-related deaths in the United States and Europe. It continues to be a notable source of significant morbidity and mortality worldwide^[1]. The American Cancer Society (ACS) estimates there will be over 97000 new cases of colon cancer, over 43000 new cases of rectal cancer, and 50630 CRC-related deaths in 2018 in the United States alone^[2]. The overall lifetime risk of developing CRC is approximately 4.49% in men, and 4.15% in women. Fortunately, the incidence of CRC in all adults (age ≥ 50 years) has been decreasing as are the rates of hospitalizations^[3]. This is likely secondary to an increase in screening colonoscopies and removal of precancerous polyps^[4]. The average-risk screening is recommended to begin at 50 years of age in both males and females but can be earlier in individuals at a higher risk or whom have a positive family history of CRC. Recently, the ACS has released updated guidelines recommending average-risk CRC screening to be lowered to age 45^[5]. When

considering those under 50, CRC has ranged from 7%-18% of all CRC patients^[4,6]. The national 2005-2009 surveillance, epidemiology, and end results data revealed the incidence was about 1.1% in those 20-34 years of age, 4% in those 35-44 years of age, and 13.4% in those aged from 45-54 years of age^[7]. The incidence has also been reported as high as 28 per 100000 cases between ages 45-49 years^[8]. CRC mortality trends have also been on the rise in those younger than 50 years. Age-adjusted early-onset CRC mortality rates from 2005-2009 ranged from 0.2-7.7 per 100000 population varying by age of CRC diagnosis, an overall increase of 2% annually from 1975-2004^[9]. In contrast, mortality rates for later-onset CRC has decreased by 2%-3% annually between 1992 and 2009^[10]. Many studies have proposed potential factors that may be associated with the rise of early-onset CRC. It has been implied that sporadic CRC accounts for the majority of early-onset cases^[4]. There also has been much discrepancy within literature observing hereditary factors as a minor or major attributing factor^[11,12]. Epidemiologic studies have proposed the rise is likely secondary to an increase of obesity, sedentary lifestyle, and diabetes mellitus^[13-15]. Other studies attribute the rise to hereditary syndromes, DNA mismatch repair, as well as other genetic syndromes^[12]. Pre-screening tools have even been proposed to evaluate whether or not patients should undergo tissue molecular screening to assess for these changes^[16].

Retrospective studies have been conducted to risk-stratify early-onset CRC. Patients presenting with signs and symptoms of rectal bleeding, abdominal pain, change in bowel habits, weight loss, bowel obstruction and anemia have been associated with early-onset CRC^[4].

However, no comparison studies have been conducted evaluating the differences in potential risk factors for various CRC cohorts. We aim to identify potential risk factors for early-onset CRC and compare these factors to a cohort of later-onset CRC (≥ 50 years) as well as control cohort defined as individuals 25-49 years old without diagnosis of CRC.

MATERIALS AND METHODS

Database

This population-based study was done using Explorys, a cloud-based platform, originally designed by the Cleveland Clinic Foundation (Cleveland, Ohio) in 1990, which was later acquired by IBM (Armonk, New York). This platform is a HITECH and HIPAA-compliant, national database search engine with the capacity to survey electronic medical records (EMR). One of the major advantages of Explorys is its capacity to survey millions of patients in minimal time. It provides aggregated data from claims data and EMRs such as Epic, Eclipsys, Amalga McKesson, and Cerner. Explorys is programmed to perform searches based on demographics, medications, and laboratory results, alone or in combination using the Systemized Nomenclature of Medicine-Clinical Terms. It can also apply a temporal relationship to various diagnostic testing and diseases (*i.e.*, establishing a symptom such as abdominal pain or rectal pain, prior to diagnosis of colorectal cancer). This study was approved by the Allegheny Singer Research Institute (Pittsburgh, Pennsylvania, United States) ethical review board on November 17, 2017. It was exempt from a full institutional review as no identifying patient factors were observed or reported. This study protocol conforms to the ethical guidelines of the 1976 Declaration of Helsinki as reflected in by the Allegheny's human research committee.

Patient selection

Explorys was used to perform a survey of all patients with an active EMR from January 2012 to December 2016. Search terms for the survey included a diagnosis of colon cancer and rectal cancer as a first-time incidence defined by the first diagnosis code entered. Once identified, we obtained 20 points of data from the records: age, gender, ethnicity (Caucasian, African American, Asian), body mass index, family history of cancer, family history of gastrointestinal malignancy, family history of colonic polyps, comorbidities of colitis, hyperlipidemia, hypertension, symptoms of abdominal pain, rectal pain, altered bowel function, rectal bleeding, weight loss, personal history of polyps, and tobacco or alcohol use. These criteria were selected based on prior reports of potential risk factors for early-onset CRC, as well as common demographic variables and comorbidities present in the elderly^[4].

All CRC patients 25 years of age or older were included and stratified based on age (25-49 years *vs* ≥ 50 years of age). Patients under 25 were excluded, as data on temporal symptomatology was not available in this cohort through the database. Demographics, comorbidities, and symptom profiles were recorded and compared

between both age groups. Furthermore, the early-onset CRC cohort was also compared with a control group consisting of individuals aged 25-49 years without a diagnosis of CRC.

Potential risk factors for CRC were temporally evaluated. Search criteria ensured all family history of cancer, gastrointestinal cancer, and polyps, as well as symptom profiles (abdominal pain, rectal pain, rectal bleeding, weight loss and altered bowel function) presented prior to a diagnosis of CRC. In addition, only patients with a first-time incidence of CRC were included in this study. These search criteria ensured that symptomology was present prior to a diagnosis of CRC rather than patients with well-established CRC presenting with symptoms after diagnosis.

Statistical analysis

All data collected by the database was enumerated using Microsoft Excel 2010 by Microsoft Inc. Categorical data are presented as frequencies and percentages. Differences in patient characteristics between the subgroups were compared using odds ratio (OR) with 95%CI and Foster plots were created^[17]. Because of the large discrepancy in the epidemiological data, odds ratio was normalized by conversion to Cohen's *d* coefficient for computation of effect sizes according to Hasselblad and Hedges where a *d* value of 0.2, 0.5, and 0.8 represents a small, medium and large effect respectively^[18]. Any conversion resulting in less than 0.2 signifies a trivial effect. Since effect sizes (ES) estimate the magnitude of effect or association between variables and are resistant to sample size influence, we used ES instead of OR for the judgment about practical significance. The *P*-value was calculated using the statistical computing language *R* where < 0.001 was considered statistically significant to limit spurious conclusions secondary to oversampling. The Explorys database rounds all numerical data to the nearest 10 persons to preserve patient anonymity.

RESULTS

A total of 35493980 were identified in the Explorys database from 2012-2016. Of those, 68860 patients (0.2%) were identified with CRC, of which 5710 (8.3%) were younger than 50 years old, with 4140 (73%) between 40-49 years of age (Table 1). The remainder 140 patients were identified as 24 or younger and were excluded from the final analysis. A total of 11800420 patients were identified between ages 25-49 with no diagnosis of CRC, with even age distribution, 42% being male, and majority being Caucasians (59%). A 20-point data set observation of all three cohorts is summarized in Table 2.

Multivariable analysis demonstrated that several factors were associated with an increased risk of CRC in the early-onset CRC group versus the later-onset CRC group ($P < 0.001$). These factors included: African American race, presenting symptoms of abdominal pain, rectal pain, altered bowel function, having a family history of any cancer, gastrointestinal (GI) malignancy, polyps, and obesity (Figure 1A).

Comparing the early-onset CRC cohort versus the control group, factors that were associated with an increased risk of CRC were: male gender, Caucasian and African-American race, presenting symptoms of abdominal pain, rectal pain, altered bowel function, rectal bleeding, weight loss, having a family history of cancer, GI malignancy, polyps, tobacco use, alcohol use, presence of colitis, obesity, hypertension, hyperlipidemia, and a personal history of polyps (Figure 1B).

Conversion of odds ratio to Cohen's *d* for standardized population difference to evaluate each factor impact on effect size is summarized in Table 3. The only significant potential risk factor when comparing early-onset CRC to later-onset CRC was found to be having a family history of GI malignancy ($d = 0.21$). This was followed by having a family history of any malignancy ($d = 0.14$) and presenting symptoms of abdominal pain ($d = 0.14$), and rectal pain ($d = 0.10$).

The largest effect on a potential risk factor when comparing early-onset CRC to the control cohort was also having a family history of GI malignancy ($d = 0.80$), followed by having a family history of cancer ($d = 0.59$). Rectal bleeding ($d = 0.55$), having a history of a polyp ($d = 0.53$), family history of polyps ($d = 0.50$) all showed a medium effect. Other smaller effects were found to be symptoms of rectal pain ($d = 0.48$), weight loss ($d = 0.48$), altered bowel function ($d = 0.41$), abdominal pain ($d = 0.37$), colitis ($d = 0.34$), obesity ($d = 0.25$), hypertension ($d = 0.25$), tobacco use ($d = 0.22$) and hyperlipidemia ($d = 0.21$).

Table 1 Age distribution of the study cohorts

	Early-onset CRC	Later-onset CRC	Control
N	5710	63010	11800420
Age, n (%)			
25-29	260 (5)	-	2336260 (20)
30-34	480 (8)	-	2469830 (21)
35-39	830 (15)	-	2409750 (20)
40-44	1400 (25)	-	2187280 (19)
45-49	2740 (48)	-	2348440 (20)
50-54	-	4370 (7)	-
55-59	-	6210 (10)	-
60-64	-	7400 (12)	-
65-69	-	8550 (14)	-
70-74	-	8920 (14)	-
75-79	-	8400 (13)	-
80-84	-	7290 (12)	-
85-89	-	5830 (9)	-
90+	-	4750 (8)	-

CRC: Colorectal cancer.

DISCUSSION

The rise of incidence, mortality, and hospitalizations of individuals with early-onset CRC remains concerning with previous studies reporting an incidence ranging from 7%-18%^[4,6]. Our data corroborates these findings as 8.3% of CRC patients in our study were younger than 50 years of age. Unfortunately, early-onset CRC typically presents in more advanced stages and is less resectable when compared to the elderly population^[19]. The majority of physicians' attribute early-onset CRC to first-degree relative history, sporadic mutation, and genetic predisposition^[4,12]. However, physicians and the young population should be aware of many other potential risk factors to help identify populations for early screening.

Our analysis, which used a large nationally representative dataset, showed that early-onset CRC *vs* late-onset CRC is associated significantly with having a family history of any gastrointestinal malignancy. Other associated factors included: African American ethnicity, family history of cancer, family history of polyps, obesity, colitis, abdominal pain, rectal pain, rectal bleeding, and altered bowel function, which corroborates with prior reports^[20-23]. Current guidelines for initiating screening in African Americans recommend starting at age 45, which our study also supports^[24].

Prior literature has not compared potential risk factors between early-onset CRC and a similar age-population excluding diagnosis of CRC. Associated risk factors are reported, and the largest effect was having a family history of a gastrointestinal malignancy. This was followed by the symptom onset of rectal bleeding, a personal polyp history, and having a family history of polyps. Other smaller effect observations included symptom onset of abdominal pain, rectal pain, altered bowel function, weight loss, tobacco use, colitis, obesity, hypertension and hyperlipidemia.

Population-based CRC screening for average-risk asymptomatic individuals starting at age 50 years is supported by the US Preventative Services and the Agency for Healthcare Policy and Research^[25-26]. Both young adults and physicians often fail to recognize symptoms for early-onset CRC, delaying the diagnosis. Symptomatic young patients often wait up to six months before seeking a medical professional^[27]. Once CRC symptoms arise, a thorough evaluation is needed to effectively establish or rule out early-onset CRC. Although a population-based database study may not justify a population screening approach, patient and physician awareness of several potential risk factors observed in our study should be taken into consideration. Clinicians overlook symptoms in young individuals and often attribute findings to alternative diagnoses^[28]. It is recommended that education efforts geared towards primary care physicians to pursue more aggressive work-up for young patients with symptomatology related to CRC may be warranted to develop an effective path to a more rapid diagnosis and treatment^[27].

We recommend that young individuals identified with the risk factors outlined in

Table 2 20-point data set observation of the study cohorts, *n* (%)

	Early-onset CRC	Later-onset CRC	Control
N	5710	63010	11800420
Gender			
Male	2800 (49)	32320 (51)	4931130 (42)
Female	2910 (51)	30690 (49)	6869290 (58)
Ethnicity			
Caucasian	3880 (68)	52330 (83)	6947160 (59)
African-American	860 (15)	8260 (13)	1462790 (12)
Asian	110 (2)	1380 (2)	258990 (2)
Symptoms			
Abdominal pain	3060 (54)	24490 (39)	2317490 (20)
Rectal pain	170 (3)	1260 (2)	48200 (0.4)
Altered bowel function	1440 (25)	14610 (23)	680420 (6)
Rectal bleeding	790 (14)	7960 (13)	190310 (2)
Weight loss	490 (9)	7800 (12)	147250 (1)
Family history			
Of cancer	1360 (24)	9400 (15)	308120 (3)
Of GI malignancy	840 (15)	4300 (7)	70560 (1)
Of polyps	60 (1)	470 (1)	15350 (0.1)
Social history			
Tobacco use	3600 (63)	42360 (67)	4838172 (41)
Alcohol use	2000 (35)	24850 (39)	2832100 (24)
Comorbidities			
Colitis	710 (12)	7270 (12)	395260 (3)
BMI ≥ 30	3510 (61)	36770 (58)	4202120 (35)
Hypertension	1710 (30)	41740 (66)	1534060 (13)
Hyperlipidemia	1090 (19)	33960 (54)	1062040 (9)
Polyp history	630 (11)	8970 (14)	155640 (1)

CRC: Colorectal cancer; GI: Gastrointestinal; BMI: Body mass index.

this study should undergo risk stratification for CRC screening. Risk factors with the largest effect include: Family history of gastrointestinal malignancy, family history of any malignancy, family or personal history of polyps, and rectal bleeding at the time of diagnosis. Comorbidities of colitis, obesity, a symptom presentation of abdominal pain, rectal pain, altered bowel function, and weight loss had a small-moderate association with early-onset CRC. These populations would most benefit from CRC screening for early diagnosis and potential prevention. In addition, young patients presenting with rectal bleeding should be appropriately managed and have CRC diagnosis ruled out. Cost-effectiveness studies are limited, but reports have demonstrated colonoscopy as an effective diagnostic strategy for individuals aged 25-45 with rectal bleeding^[29].

There are a few limitations that should be acknowledged. The data has intrinsic limitations to an aggregated EMR database, where diagnoses rely on correct documentation in EMRs and does not correlate with clinical data. Also, potential risk factors were not corrected for all possible causes of early-onset CRC; this study proposed that having a family history of GI malignancy had a large effect for the development of early-onset CRC. This may suggest a genetic component for these individuals, which this database does not allow further elucidation.

As another limitation, a true regression analysis was not performed due to an aggregated de-identified data set, rather odd ratios were used. Additionally, potential associations with other comorbid conditions may create a bias toward one another. In order to limit this impact of confounding factors, a *P*-value of < 0.001 was set as the threshold of significant odds ratios, which were converted to Cohen's *d* to standardize mean-difference for observation of effect of individual risk factors as recommended and accepted by multiple studies^[18,30-31]. Lastly, specific age ranges for patients with a family history of CRC were not observed. Therefore, patients with a family history of CRC should continue undergoing risk-appropriate CRC screenings with early

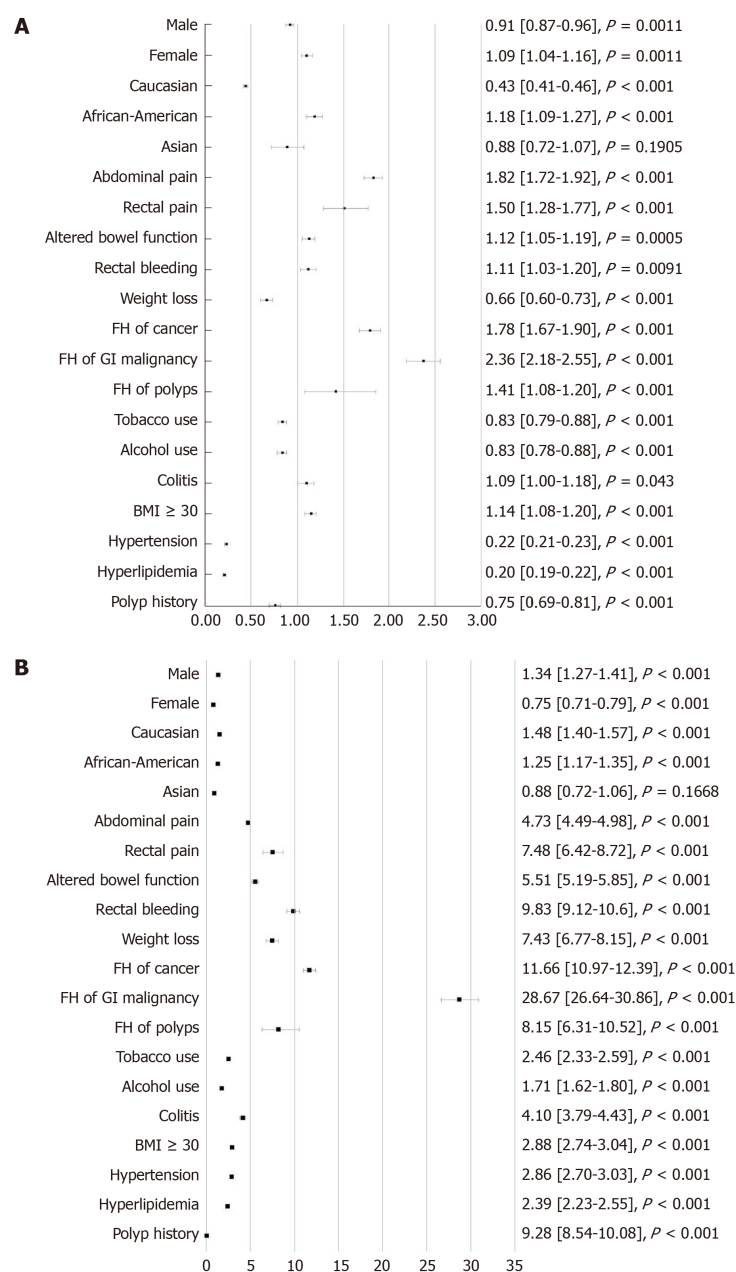


Figure 1 Odds ratio for early-onset colorectal cancer vs later-onset colorectal cancer and the control cohort. A: Early-onset colorectal cancer (CRC) vs later-onset CRC; **B:** Early-onset CRC vs the control cohort. GI: Gastrointestinal; BMI: Body mass index.

initiation of colonoscopy.

Prospective longitudinal analysis of patients with no predisposing hereditary or genetic factors with early-onset CRC should be observed and compared to a healthy cohort without diagnosis of CRC. It is important to note however, prospective studies associated with 20 points of data involving millions of patients would span many decades. A significant advantage of Explorys is the large cohort of patients that were surveyed in weeks by a small team of investigators. In addition, epidemiological trends as well as distinct comorbid conditions, age separation, and other factors are easily subdivided.

There have been many reports that identify potential factors attributing to the rise in incidence of early-onset CRC^[6,28,32]. However, the strength of our study is the comparison of early-onset CRC to average-risk CRC, as well as a control group without diagnosis of CRC within the same timeline. Routine CRC screening is not standard of care for patients under the age of 50; however, this study should help raise awareness of the rising incidence of early-onset CRC to help physicians

Table 3 Effect level comparison for early-onset colorectal cancer

	Later-onset CRC		Control	
	Cohen's d	Effect level	Cohen's d	Effect level
Gender (%)				
Male	-0.02	-	0.07	+
Female	0.02	+	-0.07	-
Ethnicity (%)				
Caucasian	-0.20	-	0.09	+
African-American	0.04	+	0.05	+
Asian	-0.03	-	-0.03	-
Symptoms (%)				
Abdominal pain	0.14	+	0.37	++
Rectal pain	0.10	+	0.48	++
Altered bowel function	0.03	+	0.41	++
Rectal bleeding	0.02	+	0.55	+++
Weight loss	-0.10	-	0.48	++
Family History (%)				
Of cancer	0.14	+	0.59	+++
Of GI malignancy	0.21	++	0.80	++++
Of polyps	0.08	+	0.50	+++
Social History (%)				
Tobacco use	-0.04	-	0.22	++
Alcohol use	-0.04	-	0.13	+
Comorbidities (%)				
Colitis	0.02	+	0.34	++
BMI ≥ 30	0.03	+	0.25	++
Hypertension	-0.36	-	0.25	++
Hyperlipidemia	-0.39	-	0.21	++
Polyp history (%)	-0.07	-	0.53	+++

CRC: Colorectal cancer; GI: Gastrointestinal; BMI: Body mass index.

potentially screen individuals with associated risk factors relating to early-onset CRC development.

Identifying risk factors for early-onset CRC is necessary to optimize guidelines for early screening. A prospective clinical trial is the best way to address and understand potential risk factors for early-onset CRC. However, this would have an extensive cost and take many years to complete. This population-based study suggests clinicians should understand the importance of early-onset CRC, its increasing incidence, and potential risk factors to offer early screening. Pending further investigation, the risk factors outlined in this study should lower the threshold of suspicion for early CRC and potentially early CRC screening, especially in patients 40-49 years of age where incidence is highest.

In conclusion, young adults who have risk factors for development of early-onset CRC may need to be considered for earlier-onset screening protocols. These risk factors effect include: family history of gastrointestinal malignancy, family history of any malignancy, family or personal history of polyps, and rectal bleeding. Further studies in this population are necessary.

ARTICLE HIGHLIGHTS

Research background

Colorectal cancer (CRC) is the second leading cause of all cancer related deaths in the United States. Unfortunately, incidence in the younger population is on the rise. Several studies have outlined the importance of screening, and potential risk-factors to help identify a higher than average-risk population.

Research motivation

Identifying potential risk factors in the younger population for colorectal cancer may effectively lower the incidence rate for early-onset CRC. Prior studies have reported risk-factors; however a comparison analysis between a young, healthy, cancer-free cohort and patients with early-onset CRC has not been reported.

Research objectives

This study mainly investigated the factors related to early-onset colorectal cancer incidence and compared them to a control cohort to help identify potential risk-factors.

Research methods

This population-based cohort analysis utilized a national database to determine potential risk-factors of early-onset colorectal cancer. Twenty factors were compared to a control population without prior or current diagnosis of early-onset CRC as well as a later-onset CRC group. Analysis was performed using odds ratio with 95% confidence intervals, followed by normalization by conversion to Cohen's d coefficient.

Research results

Having a family history of gastrointestinal malignancy and/or any cancer resulted in the most significant risk of early-onset CRC *vs* the control cohort and the later-onset CRC cohort. Identifiable symptoms found to be potential risk-factors included rectal bleeding, rectal pain, weight loss, abdominal pain, altered bowel function, colitis, obesity, hypertension, tobacco use, and hyperlipidemia.

Research conclusions

Young adults who have risk factors for development of early-onset CRC may need to be considered for earlier-onset screening protocols. These risk factors include having a family history of gastrointestinal malignancy, family history of any malignancy, family or personal history of polyps, and rectal bleeding.

Research perspectives

Clinicians should be aware of the rise of incidence of early-onset CRC. Vigilance to screen for CRC in this population should be based on potential risk-factors outlined in our study. Further prospective, long-term studies are necessary to elucidate the rising incidence of early-onset CRC.

REFERENCES

- Greenlee RT, Murray T, Bolden S, Wingo PA. Cancer statistics, 2000. *CA Cancer J Clin* 2000; **50**: 7-33 [PMID: 10735013 DOI: 10.3322/canjclin.50.1.7]
- American Cancer Society. *Cancer Facts Figures 2018*. Atlanta: American Cancer Society 2018;
- Sonnenberg A, Byrd-Clark DD. U.S. hospitalizations for colorectal cancer 1970-2010. *Dig Dis Sci* 2014; **59**: 282-286 [PMID: 24185683 DOI: 10.1007/s10620-013-2921-5]
- Myers EA, Feingold DL, Forde KA, Arnell T, Jang JH, Whelan RL. Colorectal cancer in patients under 50 years of age: a retrospective analysis of two institutions' experience. *World J Gastroenterol* 2013; **19**: 5651-5657 [PMID: 24039357 DOI: 10.3748/wjg.v19.i34.5651]
- Lucchini Raies C, Márquez Doren F, Rivera Martínez MS. [I want to breastfeed my baby: Unveiling the experiences of women who lived process difficulties in their breastfeeding]. *Rev Chil Pediatr* 2017; **88**: 622-628 [PMID: 29546947 DOI: 10.4067/S0370-41062017000500008]
- Ahnen DJ, Wade SW, Jones WF, Sifri R, Mendoza Silveiras J, Greenamyre J, Guiffre S, Axilbund J, Spiegel A, You YN. The increasing incidence of young-onset colorectal cancer: a call to action. *Mayo Clin Proc* 2014; **89**: 216-224 [PMID: 24393412 DOI: 10.1016/j.mayocp.2013.09.006]
- Siegel R, Naishadham D, Jemal A. Cancer statistics, 2012. *CA Cancer J Clin* 2012; **62**: 10-29 [PMID: 22237781 DOI: 10.3322/caac.20138]
- National Cancer Institute. Surveillance Epidemiology and End Results. Fast Stats. Available from: <http://seer.cancer.gov/faststats/selections.php?#Output>
- National Cancer Institute. Surveillance Epidemiology and End Results. Fast Stats. Available from: <http://seer.cancer.gov/faststats/selections.php?run%40runitoutput%41data%42statistic%42year%4201202race%41sex%41age%49series%4cancercancer%420#Output>
- National Cancer Institute. Surveillance Epidemiology and End Results. Fast Stats. Available from: <http://seer.cancer.gov/faststats/selections.php?run%40runitoutput%41data%42statistic%42year%4201202race%41sex%41age%4136series%4cancercancer%420>
- Hubbard JM, Grothey A. Adolescent and young adult colorectal cancer. *J Natl Compr Canc Netw* 2013; **11**: 1219-1225 [PMID: 24142823 DOI: 10.6004/jnccn.2013.0144]
- Chang DT, Pai RK, Rybicki LA, Dimaio MA, Limaye M, Jayachandran P, Koong AC, Kunz PA, Fisher GA, Ford JM, Welton M, Shelton A, Ma L, Arber DA, Pai RK. Clinicopathologic and molecular features of sporadic early-onset colorectal adenocarcinoma: an adenocarcinoma with frequent signet ring cell differentiation, rectal and sigmoid involvement, and adverse morphologic features. *Mod Pathol* 2012; **25**: 1128-1139 [PMID: 22481281 DOI: 10.1038/modpathol.2012.61]
- Centers for Disease Control and Prevention (CDC). Trends in leisure-time physical inactivity by age, sex, and race/ethnicity--United States, 1994-2004. *MMWR Morb Mortal Wkly Rep* 2005; **54**: 991-994 [PMID: 16208312]
- Flegal KM, Carroll MD, Ogden CL, Johnson CL. Prevalence and trends in obesity among US adults, 1999-2000. *JAMA* 2002; **288**: 1723-1727 [PMID: 12365955 DOI: 10.1001/jama.288.14.1723]
- Centers for Disease Control and Prevention. Percentage of civilian, noninstitutionalized population with diagnosed diabetes, by age, United States, 1980-2010. Available from: <http://www.cdc.gov/diabetes/statistics/prev/national/figbyage.htm>
- Stigliano V, Sanchez-Mete L, Martayan A, Diodoro M, Casini B, Sperduti I, Anti M. Early-onset

- colorectal cancer patients without family history are "at very low risk" for lynch syndrome. *J Exp Clin Cancer Res* 2014; **33**: 1 [PMID: [24383517](#) DOI: [10.1186/1756-9966-33-1](#)]
- 17 **Altman DG.** *Practical statistics for medical research.* London: Chapman and Hall 1991;
- 18 **Borenstein M,** Hedges LV, Higgins JP, Rothstein HR. *Introduction to metaanalysis.* West Sussex: John Wiley Sons 2011;
- 19 **Saluja SS,** Manipadam JM, Mishra PK, Sachdeva S, Solanki N, Shah H. Young onset colorectal cancer: How does it differ from its older counterpart? *Indian J Cancer* 2014; **51**: 565-569 [PMID: [26842197](#) DOI: [10.4103/0019-509X.175350](#)]
- 20 **Austin H,** Henley SJ, King J, Richardson LC, Ehemann C. Changes in colorectal cancer incidence rates in young and older adults in the United States: what does it tell us about screening. *Cancer Causes Control* 2014; **25**: 191-201 [PMID: [24249437](#) DOI: [10.1007/s10552-013-0321-y](#)]
- 21 **Siegel RL,** Jemal A, Ward EM. Increase in incidence of colorectal cancer among young men and women in the United States. *Cancer Epidemiol Biomarkers Prev* 2009; **18**: 1695-1698 [PMID: [19505901](#) DOI: [10.1158/1055-9965.EPI-09-0186](#)]
- 22 **Rosato V,** Bosetti C, Levi F, Polesel J, Zucchetto A, Negri E, La Vecchia C. Risk factors for young-onset colorectal cancer. *Cancer Causes Control* 2013; **24**: 335-341 [PMID: [23224326](#) DOI: [10.1007/s10552-012-0119-3](#)]
- 23 **Liang J,** Kalady MF, Church J. Young age of onset colorectal cancers. *Int J Colorectal Dis* 2015; **30**: 1653-1657 [PMID: [26358068](#) DOI: [10.1007/s00384-015-2341-4](#)]
- 24 **Agrawal S,** Bhupinderjit A, Bhutani MS, Boardman L, Nguyen C, Romero Y, Srinivasan R, Figueroa-Moseley C; Committee of Minority Affairs and Cultural Diversity, American College of Gastroenterology. Colorectal cancer in African Americans. *Am J Gastroenterol* 2005; **100**: 515-23; discussion 514 [PMID: [15743345](#) DOI: [10.1111/j.1572-0241.2005.41829.x](#)]
- 25 **Qaseem A,** Denberg TD, Hopkins RH, Humphrey LL, Levine J, Sweet DE, Shekelle P; Clinical Guidelines Committee of the American College of Physicians. Screening for colorectal cancer: a guidance statement from the American College of Physicians. *Ann Intern Med* 2012; **156**: 378-386 [PMID: [22393133](#) DOI: [10.7326/0003-4819-156-5-201203060-00010](#)]
- 26 **Levin B,** Lieberman DA, McFarland B, Andrews KS, Brooks D, Bond J, Dash C, Giardiello FM, Glick S, Johnson D, Johnson CD, Levin TR, Pickhardt PJ, Rex DK, Smith RA, Thorson A, Winawer SJ; American Cancer Society Colorectal Cancer Advisory Group; US Multi-Society Task Force; American College of Radiology Colon Cancer Committee. Screening and surveillance for the early detection of colorectal cancer and adenomatous polyps, 2008: a joint guideline from the American Cancer Society, the US Multi-Society Task Force on Colorectal Cancer, and the American College of Radiology. *Gastroenterology* 2008; **134**: 1570-1595 [PMID: [18384785](#) DOI: [10.1053/j.gastro.2008.02.002](#)]
- 27 **O'Connell JB,** Maggard MA, Liu JH, Etzioni DA, Livingston EH, Ko CY. Rates of colon and rectal cancers are increasing in young adults. *Am Surg* 2003; **69**: 866-872 [PMID: [14570365](#)]
- 28 **You YN,** Xing Y, Feig BW, Chang GJ, Cormier JN. Young-onset colorectal cancer: is it time to pay attention? *Arch Intern Med* 2012; **172**: 287-289 [PMID: [22157065](#) DOI: [10.1001/archinternmed.2011.602](#)]
- 29 **Lewis JD,** Brown A, Localio AR, Schwartz JS. Initial evaluation of rectal bleeding in young persons: a cost-effectiveness analysis. *Ann Intern Med* 2002; **136**: 99-110 [PMID: [11790061](#) DOI: [10.7326/0003-4819-136-2-200201150-00007](#)]
- 30 **Polanin JR,** Snijlsteit B. *Campbell Methods Policy Note on Converting Between Effect Sizes (Version 1.1, updated December 2016).* Oslo: The Campbell Collaboration 2016; [DOI: [10.4073/cmpn.2016.3](#)]
- 31 **Kelley K,** Preacher KJ. On effect size. *Psychol Methods* 2012; **17**: 137-152 [PMID: [22545595](#) DOI: [10.1037/a0028086](#)]
- 32 **Bailey CE,** Hu CY, You YN, Bednarski BK, Rodriguez-Bigas MA, Skibber JM, Cantor SB, Chang GJ. Increasing disparities in the age-related incidences of colon and rectal cancers in the United States, 1975-2010. *JAMA Surg* 2015; **150**: 17-22 [PMID: [25372703](#) DOI: [10.1001/jamasurg.2014.1756](#)]



Published By Baishideng Publishing Group Inc
7041 Koll Center Parkway, Suite 160, Pleasanton, CA 94566, USA
Telephone: +1-925-2238242
E-mail: bpgoffice@wjgnet.com
Help Desk: <https://www.f6publishing.com/helpdesk>
<https://www.wjgnet.com>

