

World Journal of *Gastrointestinal Oncology*

World J Gastrointest Oncol 2021 August 15; 13(8): 758-979



REVIEW

- 758** Metabolism-associated genes in occurrence and development of gastrointestinal cancer: Latest progress and future prospect
Miao YD, Mu LJ, Mi DH
- 772** Immune checkpoint inhibitor-mediated colitis in gastrointestinal malignancies and inflammatory bowel disease
Weingarden AR, Rubin SJS, Gubatan J
- 799** B7 homologue 3 as a prognostic biomarker and potential therapeutic target in gastrointestinal tumors
Rasic P, Jovanovic-Tucovic M, Jeremic M, Djuricic SM, Vasiljevic ZV, Milickovic M, Savic D

MINIREVIEWS

- 822** Reflectance spectra analysis for mucous assessment
Chiba T, Murata M, Kawano T, Hashizume M, Akahoshi T
- 835** *Helicobacter pylori* infection and other bacteria in pancreatic cancer and autoimmune pancreatitis
Kumovsky L, Dite P, Jabandziev P, Dolina J, Vaculova J, Blaho M, Bojkova M, Dvorackova J, Uvirova M, Kala Z, Trna J
- 845** Recent update on comprehensive therapy for advanced hepatocellular carcinoma
Wang H, Li W
- 856** Young-onset colorectal cancer: A review
Done JZ, Fang SH
- 867** Role of exosomal long non-coding RNAs in colorectal cancer
Sun R, He XY, Mei C, Ou CL

ORIGINAL ARTICLE

Basic Study

- 879** Plasma MMP-2 and MMP-7 levels are elevated first month after surgery and may promote growth of residual metastases
Shantha Kumara H, Miyagaki H, Herath SA, Pettke E, Yan X, Cekic V, Whelan RL
- 893** STAT3-mediated activation of mitochondrial pathway contributes to antitumor effect of dihydrotanshinone I in esophageal squamous cell carcinoma cells
Qi MM, He PZ, Zhang L, Dong WG

Retrospective Cohort Study

- 915 Neutrophil-to-lymphocyte ratio and carbohydrate antigen 19-9 as prognostic markers for advanced pancreatic cancer patients receiving first-line chemotherapy
Shin K, Jung EK, Park SJ, Jeong S, Kim IH, Lee MA

Retrospective Study

- 929 Diffuse reduction of spleen density is a novel prognostic marker for intrahepatic cholangiocarcinoma after curative resection
Deng LM, Wang Y, Yang JH, Li JL, Chen ZY, Bao WM, Chen KY, Yao XF, Zheng CM, Zheng JY, Yu ZP, Jin B, Chen G
- 943 Development of a prognostic prediction model based on microRNA-1269a in esophageal cancer
Yu Y, Ren KM
- 959 Investigation of the factors influencing surgical treatment of duodenal gastrointestinal stromal tumors
Wu YZ, Li Y, Wu M, Zheng XH, Tian YT, Xie YB

Observational Study

- 970 Diagnostic value of four serum exosome microRNAs panel for the detection of colorectal cancer
Han L, Shi WJ, Xie YB, Zhang ZG

ABOUT COVER

Editorial Board Member of *World Journal of Gastrointestinal Oncology*, Renato Borges Fagundes, MD, PhD, Full Professor, Gastroenterology Department of Hospital Universitário de Santa Maria, Universidade Federal de Santa Maria, Porto Alegre 90480200, Brazil. fagundesrb@gmail.com

AIMS AND SCOPE

The primary aim of *World Journal of Gastrointestinal Oncology* (WJGO, *World J Gastrointest Oncol*) is to provide scholars and readers from various fields of gastrointestinal oncology with a platform to publish high-quality basic and clinical research articles and communicate their research findings online.

WJGO mainly publishes articles reporting research results and findings obtained in the field of gastrointestinal oncology and covering a wide range of topics including liver cell adenoma, gastric neoplasms, appendiceal neoplasms, biliary tract neoplasms, hepatocellular carcinoma, pancreatic carcinoma, cecal neoplasms, colonic neoplasms, colorectal neoplasms, duodenal neoplasms, esophageal neoplasms, gallbladder neoplasms, *etc.*

INDEXING/ABSTRACTING

The WJGO is now indexed in Science Citation Index Expanded (also known as SciSearch®), PubMed, PubMed Central, and Scopus. The 2021 edition of Journal Citation Reports® cites the 2020 impact factor (IF) for WJGO as 3.393; IF without journal self cites: 3.333; 5-year IF: 3.519; Journal Citation Indicator: 0.5; Ranking: 163 among 242 journals in oncology; Quartile category: Q3; Ranking: 60 among 92 journals in gastroenterology and hepatology; and Quartile category: Q3. The WJGO's CiteScore for 2020 is 3.3 and Scopus CiteScore rank 2020: Gastroenterology is 70/136.

RESPONSIBLE EDITORS FOR THIS ISSUE

Production Editor: Ying-Yi Yuan; **Production Department Director:** Xiang Li; **Editorial Office Director:** Ya-Juan Ma.

NAME OF JOURNAL

World Journal of Gastrointestinal Oncology

ISSN

ISSN 1948-5204 (online)

LAUNCH DATE

February 15, 2009

FREQUENCY

Monthly

EDITORS-IN-CHIEF

Rosa M Jimenez Rodriguez, Pashtoon Kasi, Monjur Ahmed, Florin Burada

EDITORIAL BOARD MEMBERS

<https://www.wjgnet.com/1948-5204/editorialboard.htm>

PUBLICATION DATE

August 15, 2021

COPYRIGHT

© 2021 Baishideng Publishing Group Inc

INSTRUCTIONS TO AUTHORS

<https://www.wjgnet.com/bpg/gerinfo/204>

GUIDELINES FOR ETHICS DOCUMENTS

<https://www.wjgnet.com/bpg/GerInfo/287>

GUIDELINES FOR NON-NATIVE SPEAKERS OF ENGLISH

<https://www.wjgnet.com/bpg/gerinfo/240>

PUBLICATION ETHICS

<https://www.wjgnet.com/bpg/GerInfo/288>

PUBLICATION MISCONDUCT

<https://www.wjgnet.com/bpg/gerinfo/208>

ARTICLE PROCESSING CHARGE

<https://www.wjgnet.com/bpg/gerinfo/242>

STEPS FOR SUBMITTING MANUSCRIPTS

<https://www.wjgnet.com/bpg/GerInfo/239>

ONLINE SUBMISSION

<https://www.f6publishing.com>

Retrospective Cohort Study

Neutrophil-to-lymphocyte ratio and carbohydrate antigen 19-9 as prognostic markers for advanced pancreatic cancer patients receiving first-line chemotherapy

Kabsoo Shin, Eun-Kyo Jung, Se Jun Park, Sangwoon Jeong, In-Ho Kim, Myung-ah Lee

ORCID number: Kabsoo Shin 0000-0002-6709-0894; Eun-Kyo Jung 0000-0002-6694-5723; Se Jun Park 0000-0001-5486-9818; Sangwoon Jeong 0000-0003-1780-6740; In-Ho Kim 0000-0002-0351-2074; Myung-ah Lee 0000-0002-1204-0574.

Author contributions: Shin K and Kim IH designed the research and study concept; Park SJ and Jung EK performed the data collection; Shin K and Jeong S performed the statistical analysis; Shin K and Kim IH performed the data interpretation; Shin K drafted the manuscript; Lee MA revised the manuscript.

Institutional review board statement: This study was reviewed and approved by the Ethics Committees of The Institutional Review Board of the Catholic University of Seoul Saint Mary's Hospital (approval No. KC20RASI0321).

Informed consent statement: The requirement for informed consent was waived because the study was based on retrospective analyses of existing administrative and clinical data.

Conflict-of-interest statement: All the authors have no conflict of

Kabsoo Shin, Eun-Kyo Jung, Se Jun Park, Sangwoon Jeong, In-Ho Kim, Myung-ah Lee, Division of Medical Oncology, Department of Internal Medicine, Seoul St. Mary's Hospital, College of Medicine, The Catholic University of Korea, Seoul 06591, South Korea

Kabsoo Shin, Eun-Kyo Jung, Se Jun Park, Sangwoon Jeong, In-Ho Kim, Myung-ah Lee, Catholic Cancer Research Institute, College of Medicine, The Catholic University of Korea, Seoul 06591, South Korea

Corresponding author: Myung-ah Lee, MD, PhD, Professor, Division of Medical Oncology, Department of Internal Medicine, Seoul St. Mary's Hospital, College of Medicine, The Catholic University of Korea, 222 Banpo-daero, Secho-gu, Seoul 06591, South Korea.
angelamd@catholic.ac.kr

Abstract

BACKGROUND

A decline in serum carbohydrate antigen 19-9 (CA19-9) levels during systemic chemotherapy is considered as a prognostic marker for patients with advanced pancreatic cancer. Neutrophil-to-lymphocyte ratio (NLR) has been extensively studied as a simple and useful indicator of prognosis in various cancers including pancreatic cancer.

AIM

To assess the prognostic significance of NLR and CA19-9 in patients with advanced pancreatic adenocarcinoma received first-line chemotherapy according to CA19-9 positivity.

METHODS

We retrospectively analyzed patients diagnosed with advanced pancreatic cancer who received first-line chemotherapy between January 2010 and July 2017 at the Catholic University of Seoul St. Mary's Hospital. Patients were divided according to CA19-9 positivity (CA19-9-positive *vs* -negative groups) and pre-and post-treatment NLR levels. To determine cut-off value of NLR and CA19-9 reduction, time-dependent receiver operating characteristic curve was applied. We evaluated overall survival (OS) and progression-free survival (PFS) for each group using Kaplan-Meier method, and we performed multivariate analyses on the entire cohort.

interest related to the manuscript.

Data sharing statement: No additional data are available.

STROBE statement: The authors have read the STROBE Statement-checklist of items, and the manuscript was prepared and revised according to the STROBE Statement-checklist of items.

Open-Access: This article is an open-access article that was selected by an in-house editor and fully peer-reviewed by external reviewers. It is distributed in accordance with the Creative Commons Attribution NonCommercial (CC BY-NC 4.0) license, which permits others to distribute, remix, adapt, build upon this work non-commercially, and license their derivative works on different terms, provided the original work is properly cited and the use is non-commercial. See: <http://creativecommons.org/licenses/by-nc/4.0/>

Manuscript source: Unsolicited manuscript

Specialty type: Oncology

Country/Territory of origin: South Korea

Peer-review report's scientific quality classification

Grade A (Excellent): 0
Grade B (Very good): 0
Grade C (Good): C, C
Grade D (Fair): 0
Grade E (Poor): 0

Received: February 24, 2021

Peer-review started: February 24, 2021

First decision: April 19, 2021

Revised: May 3, 2021

Accepted: July 9, 2021

Article in press: July 9, 2021

Published online: August 15, 2021

P-Reviewer: Liu Y

S-Editor: Gao CC

L-Editor: A

P-Editor: Ma YJ



RESULTS

We included 271 patients in this study. Cut-off value of NLR and CA19-9 reduction was determined as 2.62 and 18%. Multivariate analysis showed that post-treatment NLR < 2.62 and reduction of $\geq 18\%$ of baseline CA19-9 were significantly associated with OS and PFS. Post-treatment NLR ≥ 2.62 showed hazard ratio (HR) of 2.47 [95% confidence interval (CI): 1.84-3.32, $P < 0.001$] and CA19-9 decline ($\geq 18\%$) showed HR of 0.51 (95%CI: 0.39-0.67, $P < 0.001$) for OS. When CA19-9-positive patients were divided into groups according to CA19-9 response (responder *vs* non-responder) and post-treatment NLR (< 2.62 *vs* ≥ 2.62), CA19-9 responder and post-treatment NLR < 2.62 group showed better survival than CA19-9 non-responder and post-treatment NLR ≥ 2.62 group (OS 11.0 mo *vs* 3.9 mo, $P < 0.001$; PFS 6.3 mo *vs* 2.0 mo, $P < 0.001$). The combination of CA19-9 decline and post-treatment NLR showed a significant correlation with clinical response in CA 19-9 positive group. Within the CA19-9-negative group, the post-treatment NLR < 2.62 group showed better survival than the post-treatment NLR ≥ 2.62 group (OS 12.7 mo *vs* 7.7 mo, $P < 0.001$; PFS 6.7 mo *vs* 2.1 mo, $P < 0.001$), and post-treatment NLR showed correlation with clinical response.

CONCLUSION

In advanced pancreatic cancer patients positive for CA19-9 and treated with systemic chemotherapy, the combination of post-treatment NLR < 2.62 and 18% decline of CA19-9 at the first response evaluation is a good prognostic marker. Post-treatment NLR < 2.62 alone could be used as a prognostic marker and an adjunctive tool for response evaluation in CA19-9-negative patients.

Key Words: Pancreatic adenocarcinoma; Serum carbohydrate antigen 19-9; Neutrophil-to-lymphocyte ratio; Multivariate analysis; Prognosis; Chemotherapy

©The Author(s) 2021. Published by Baishideng Publishing Group Inc. All rights reserved.

Core Tip: In pancreatic cancer patients treated with first-line chemotherapy, carbohydrate antigen 19-9 (CA19-9) decline is considered as a prognostic marker. However, there has been no consensus regarding the degree of CA19-9 decline, and certain populations show false negativity. We evaluated the cut-off value of decline of CA19-9 and post-treatment neutrophil-to-lymphocyte ratio (NLR) as prognostic makers. Combination of post-treatment NLR (< 2.62) and decline of CA19-9 ($\geq 18\%$) for CA19-9 positive group or post-treatment NLR alone for CA19-9 negative group could be used as a prognostic marker and an adjuvant tool for response evaluation.

Citation: Shin K, Jung EK, Park SJ, Jeong S, Kim IH, Lee MA. Neutrophil-to-lymphocyte ratio and carbohydrate antigen 19-9 as prognostic markers for advanced pancreatic cancer patients receiving first-line chemotherapy. *World J Gastrointest Oncol* 2021; 13(8): 915-928

URL: <https://www.wjgnet.com/1948-5204/full/v13/i8/915.htm>

DOI: <https://dx.doi.org/10.4251/wjgo.v13.i8.915>

INTRODUCTION

Pancreatic cancer is the seventh leading cause of cancer-related death worldwide and the fourth leading cause of cancer-related death in western countries[1,2]. Prognosis remains dismal with a 5-year survival rate of only 8%[1]. At the time of diagnosis, less than 20% of patients are eligible for curative surgery[3]. For patients with advanced pancreatic cancer (either locally advanced or metastatic disease), the mainstay of treatment is systemic chemotherapy. Gemcitabine base regimen and 5-FU based regimen displayed survival benefit and have been recommended as first-line therapies [4-6].

Radiologic evaluation based on the response evaluation criteria in solid tumors (RECIST) can be used to assess the response to systemic chemotherapy, although radiologic evaluation is considered unreliable because the desmoplastic reaction in the tumor microenvironment makes it difficult to differentiate between normal pancreatic

tissue, malignant tissue, inflammation, and fibrosis[7]. This necessitates biomarkers to support imaging assessments.

Carbohydrate antigen 19-9 (CA19-9) is a sialylated Lewis blood group antigen and is the most widely investigated tumor marker for pancreatic cancer. CA19-9 has proven useful in the diagnosis of pancreatic cancer in symptomatic patients with a sensitivity and specificity of 79%-81% and 82%-90%, respectively[8]. The pre-operative CA19-9 Level is associated with prognosis and resectability in resectable diseases. Post-operative CA19-9 Levels are associated with prognosis and recurrence. In advanced diseases, pre-treatment CA19-9 Level is prognostic, and CA19-9 decline during chemotherapy seems to be an indicator of treatment response[9].

Roughly, 5%-10% of the population is considered to be of the Le^{a-b-} phenotype and cannot synthesize CA19-9. Evaluating serum CA19-9 levels is not useful in a CA19-9-negative population, and false positivity can be detected by the presence of biliary obstruction, infection, or inflammation. Therefore, the value of CA19-9 as a tumor marker is limited in certain populations[10,11].

Inflammatory responses in the tumor microenvironment play vital roles in tumor initiation and promotion (survival, proliferation, growth, angiogenesis, and invasion) [12]. Blood neutrophil-to-lymphocyte ratio (NLR), calculated using the absolute lymphocyte and neutrophil count of peripheral blood, is one of the most studied indicators of the systemic inflammatory response. Neutrophils contribute to the inflammatory response by infiltrating tumors and the surrounding microenvironment and by secreting various cytokines and vascular endothelial growth factor (VEGF). Lymphocytes contribute to the immune surveillance of tumors by inducing cytotoxic cell death and by inhibiting tumor cell proliferation and migration[13,14].

Many recent studies have shown that NLR is associated with prognosis in various cancers including pancreatic cancer. Low NLR is associated with a better prognosis than high NLR, and the link between response to chemotherapy and NLR has been studied[15-18]. Several studies also have shown that combination of NLR and CA 19-9 could be a prognostic marker in patients with pancreatic cancer, but they did not focus on the changes in NLR and CA 19-9 between pre- and post-treatment[19-21].

In the present study, we sought to assess the prognostic significance of NLR and CA19-9 in patients with advanced pancreatic adenocarcinoma who receive first-line chemotherapy. We also aimed to investigate the potential association of changes in NLR and CA19-9 from baseline to first response evaluation with the prognosis and chemotherapy response according to CA19-9 positivity.

MATERIALS AND METHODS

Patients

We retrospectively investigated the data of patients diagnosed with pancreatic cancer who received first-line chemotherapy between January 2010 and July 2017 at the Catholic University of Seoul St. Mary's Hospital.

Eligible patients were aged 18 years or older, had histologically confirmed pancreatic adenocarcinoma, metastatic disease, or locally advanced disease, had at least one cycle of the first line systemic chemotherapy, had a CA19-9 levels and complete blood count (CBC) at the baseline and when the first response evaluation was performed.

Patients with unresolved biliary obstruction or biliary tract infection and active malignancies other than pancreatic cancer were excluded.

NLR was defined as the absolute neutrophil count divided by the absolute lymphocyte count in peripheral blood. NLR and CA19-9 data were collected within one week before treatment and within one week after response evaluation was performed.

Other clinico-pathological variables included age, sex, Eastern Cooperative Oncology Group performance status (ECOG PS), stage (locally advanced or metastatic), number of metastatic sites, liver metastasis, pathologic differentiation, biliary drainage, chemotherapy regimen, and carcinoembryonic antigen (CEA).

True CA19-9 negativity was defined as having a serum CA19-9 concentration within the normal range (< 37 U/mL) from baseline to the follow-up period, including when disease status progressed. CA19-9 false-negativity was defined as having a serum CA19-9 concentration within the normal range (< 37 U/mL) from baseline, but elevation was confirmed during the follow-up period.

The Institutional Review Board of the Catholic University of Seoul Saint Mary's Hospital approved the study (KC20RASI0321). Requirement for informed consent was waived because the study was based on retrospective analyses of existing adminis-

trative and clinical data.

Follow-up evaluation

Response evaluation was performed with abdominal computed tomography or magnetic resonance imaging every two cycles of treatment with tumor markers CA19-9 and NLR. When signs or symptoms indicated a possible disease progression, response evaluation was performed with CA19-9 and NLR.

Statistical analysis

Progression-free survival (PFS) was defined as the time from the start of treatment to disease progression or death from any cause. Overall survival (OS) was measured as the time from the start of treatment until death from any cause or until the last follow-up date. Treatment response was evaluated using Response Evaluation Criteria in Solid Tumors version 1.1.

Chi-squared and Fisher's test for categorical variables were used to compare the demographics between groups regarding baseline characteristics. To determine the optimal cut-off value of NLR and CA19-9 reduction, time-dependent receiver operating characteristic (ROC) curve was applied. The Kaplan-Meier method and log-rank test were used to estimate cumulative survival and for comparison between the groups.

Univariate and multivariate analysis models of patient and tumor characteristics in association with PFS and OS were based on Cox-proportional hazards regression analyses. Significance was considered as $P < 0.05$. All statistical analyses were conducted using R version 3.5.3 (<http://www.r-project.org>).

RESULTS

Clinical characteristics

A total of 271 patients between January 2010 and July 2017 were eligible for analysis. The median follow-up duration was 7.9 mo. The baseline characteristics of the population are summarized in [Table 1](#). The median age was 63 years [interquartile range (IQR), 57-70 years] and the male to female ratio was 178 (65.7%) to 93 (34.3%). Patients with ECOG PS 0-1 and in the metastatic stage were 79.7% and 91.9%, respectively. Majority of patients received gemcitabine based chemotherapy (86.7%) and 80.8% of the patients had elevated CA19-9 (> 37 U/mL) at diagnosis; median CA19-9 was 362.80 U/mL (IQR, 64.98-1585.90).

Median pre-treatment NLR was 2.66 (IQR, 1.78-3.85) and median post-treatment NLR was 2.53 (IQR, 1.63-4.03).

Among 52 patients who initially had a normal range of CA19-9, 35 patients presented with elevated values of CA19-9 during follow-up. They were categorized as the CA19-9 false-negative group. The remaining 17 patients maintained normal CA19-9 levels (< 37 U/mL) during the follow-up, regardless of disease status; thus, they were categorized as the CA19-9 true-negative group.

Compared to CA19-9 negative group, factors found to be significantly associated with CA19-9 positive group included number of metastatic sites (≥ 3), liver metastasis, higher number of pretreatment and post-treatment NLR, and elevated CEA. The baseline characteristics of the cohort according to CA19-9 positivity are summarized in [Table 1](#).

In addition, compared to CA 19-9 false-negative group, factors found to be significantly associated with CA19-9 positive group included number of metastatic sites (≥ 3), higher number of pretreatment and post-treatment NLR, and elevated CEA. CA19-9 positive group showed tendency to be positively associated with liver metastasis. There were no significant differences between the CA19-9-positive and CA19-9 true-negative groups ([Supplementary Table 1](#)).

Determination of optimal cut-off value of Pre- and post-treatment NLR, decline of CA19-9

Time-dependent ROC curve was generated with a 1-year survival time point, and the cut-off value was determined by the value that maximized the Youden index. Pre-treatment NLR 2.60, post-treatment NLR 2.62, and 18% decline of CA19-9 were selected as cut-off values ([Supplementary Figure 1](#)).

Table 1 Baseline characteristics

Variables	Number of patients, n = 271	%	Median (interquartile range)	CA19-9 positive, n = 219	%	CA19-9 negative, n = 52	%	P value [†]
Age (yr)			63 (57-70)					
< 65	167	61.6		133	60.7	34	65.4	0.535
≥ 65	104	38.4		86	39.3	18	34.6	
Sex								
Male	178	65.7		147	67.1	31	59.6	0.305
Female	93	34.3		72	32.9	21	40.4	
ECOG								
0-1	216	79.7		171	78.1	45	86.5	0.173
≥ 2	55	20.3		48	21.9	7	13.5	
Stage								
Locally advanced	22	8.1		15	6.8	7	13.5	0.117
Metastatic	249	91.9		204	93.2	45	86.5	
Differentiation								
Well to moderately	177	65.3		142	64.8	35	67.3	0.262
Poorly	94	34.7		77	35.2	17	32.7	
Biliary stent								
Yes	30	11.1		28	12.8	2	3.8	0.084
No	241	88.9		191	87.2	50	96.2	
Chemotherapy								
Gemcitabine	86	31.7		72	32.9	14	26.9	0.967
Gemcitabine/Elrotinib	110	40.6		87	39.7	23	44.2	
Gemcitabine/Nab-paclitaxel	39	14.4		31	14.2	8	15.4	
Gemcitabine/Fluoropyrimidine	30	11.1		24	11.0	6	11.5	
FOLFIRINOX	6	2.2		5	2.3	1	1.9	
No. of metastatic sites								
0-2	229	84.5		180	82.2	49	94.2	0.033
3-	42	15.5		39	17.8	3	5.8	
Liver metastasis								
Yes	122	45.0		106	48.4	16	30.8	0.022
No	149	55.0		113	51.6	36	69.2	
Pretreatment NLR			2.66 (1.78-3.85)					
< 2.60	130	48.0		97	44.3	33	63.5	0.013
≥ 2.60	141	52.0		122	55.7	19	36.5	
Post-treatment NLR			2.53 (1.63-4.03)					
< 2.62	143	52.8		106	48.4	37	71.2	0.003
≥ 2.62	128	47.2		113	51.6	15	28.8	
CA19-9 (U/mL)			362.80 (64.98-1585.90)					
≤ 37	52	19.2		0	0.0	52	100.0	
> 37	219	80.8		219	100.0	0	0.0	

CEA (ng/mL)		3.26 (2.00-7.95)					
≤ 5	175	64.6	133	60.7	42	80.8	0.003
> 5	96	35.4	86	39.3	10	19.2	

¹*P* value from Chi-square test or Fisher's exact test for categorical variables. ECOG PS: Eastern Cooperative Oncology Group Performance Status; NLR: Neutrophil-to-lymphocyte ratio; CA19-9: Carbohydrate antigen 19-9; CEA: Carcinoembryonic antigen; FOLFIRINOX: Folinic acid, 5-Fluorouracil, Irinotecan and Oxaliplatin.

Association of the pre-treatment NLR and CA19-9 with baseline clinical characteristics

The clinical characteristics of the cohort according to pre-treatment NLR (< 2.60 *vs* ≥ 2.60) are summarized in [Supplementary Table 2](#). The pre-treatment NLR ≥ 2.60 group was associated with poor differentiation and elevated CA19-9 (*P* = 0.039 and *P* < 0.001, respectively). Pre-treatment NLR was positively correlated with post-treatment NLR (*P* < 0.001).

CA19-9 response and survival

The cohort was divided into three groups: Group A, comprising the CA19-9 responders, including patients with 18% decline or normalization of CA19-9 from baseline to the first response evaluation; Group B, comprising the CA19-9 non-responders, including patients with less than 18% decline or increased CA19-9 at the first response evaluation; Group C, comprising patients with negative CA19-9. The survival curves are summarized in [Figure 1](#).

Group A showed longer OS and PFS than Group B (*P* < 0.001 and *P* < 0.001, respectively), with a median OS of 10.2 mo [95% confidence interval (CI): 8.6-11.8] and a median PFS of 5.7 mo (95%CI: 4.4-6.5). Group C showed longer OS and PFS than Group B (*P* < 0.001 and *P* < 0.001, respectively), with median OS of 10.5 mo (95%CI: 9.3-13.0) and a median PFS of 5.6 mo (95%CI: 4.1-7.6). Group B showed a worse prognosis with a median OS of 5.8 mo (95%CI: 4.9-6.6) and a median PFS of 2.5 mo (2.0-3.1) than Group A or C. Group A and Group C showed no difference in both OS and PFS (*P* = 0.620 and *P* = 0.310, respectively).

When group C was subdivided by CA 19-9 false-negative and CA 19-9 true negative group, false-negative group showed statistically better OS and PFS (OS 12.3 mo, 95%CI: 10.5-15.5 *vs* 8.1 mo, 95%CI: 7.7-11.0, *P* = 0.040; PFS 6.7 mo, 95%CI: 4.1-9.5 *vs* 4.0 mo, 95%CI: 1.9-6.7, *P* = 0.020).

Pre- and post-treatment NLR and survival

When the cohort was divided according to pre-treatment NLR (< 2.60 *vs* ≥ 2.60), groups were different in PFS and OS by log-rank test. Pre-treatment NLR < 2.60 group showed better OS and PFS (OS 10.2 mo, 95%CI: 8.8-11.7 *vs* 6.5 mo, 95%CI: 5.8-7.7, *P* < 0.001; PFS 5.63 mo, 95%CI: 4.40-6.53 *vs* 3.43 mo, 95%CI: 2.73-3.97, *P* < 0.001).

When the cohort was divided by post-treatment NLR (< 2.62 *vs* ≥ 2.62), groups were different in PFS and OS by log-rank test. Post-treatment NLR < 2.62 group showed better OS and PFS (OS 10.8 mo, 95%CI: 9.6-12.3 *vs* 5.8 mo, 95%CI: 5.0-6.6, *P* < 0.001; PFS 6.2 mo, 95%CI: 4.9-7.2 *vs* 2.7 mo, 95%CI: 2.1-3.5, *P* < 0.001).

Univariate and multivariate analyses of PFS and OS

Univariate analysis showed that OS, ECOG PS (0-1 *vs* ≥ 2), stage (locally advanced *vs* metastatic), differentiation, chemotherapy regimen (Gemcitabine single *vs* other regimens), pre-treatment NLR (< 2.60 *vs* ≥ 2.60), post-treatment NLR (< 2.62 *vs* ≥ 2.62), CA19-9 18% reduction, and CEA were prognostic factors associated with survival. After adjusting for covariates, multivariate analysis showed that ECOG, stage, differentiation, chemotherapy regimen, post-treatment NLR, and CA19-9 reduction were independent prognostic factors of OS.

Univariate and multivariate analysis of PFS showed that stage, liver metastasis, post-treatment NLR, and CA19-9 reduction were independent prognostic factors of PFS ([Table 2](#)).

Multivariate analysis of both OS and PFS showed that post-treatment NLR and CA19-9 decline were the most significant prognostic factors. Post-treatment NLR ≥ 2.62 showed hazard ratio (HR) of 2.47 (95%CI: 1.84-3.32, *P* < 0.001) and CA 19-9 decline (≥ 18%) showed HR of 0.51 (95%CI: 0.39-0.67, *P* < 0.001) for OS.

Table 2 Univariate and multivariate analysis of overall survival, progression-free survival

	Overall survival						Progression-free survival					
	Univariate			Multivariate			Univariate			Multivariate		
	HR	95%CI	P value	HR	95%CI	P value	HR	95%CI	P value	HR	95%CI	P value
Age (yr)												
< 65	1						1					
≥ 65	1.08	0.84-1.39	0.557				0.97	0.75-1.24	0.786			
Sex												
Female	1						1					
Male	1.12	0.86-1.46	0.406				1.08	0.83-1.39	0.573			
ECOG												
0-1	1			1			1					
≥ 2	1.5	1.10-2.03	0.009	1.40	1.00-1.97	0.050	1.23	0.81-0.91	0.173			
Stage												
Locally advanced	1			1			1			1		
Metastatic	1.84	1.13-2.98	0.014	2.17	1.28-3.69	0.004	1.95	1.23-3.09	0.005	1.91	1.16-3.15	0.011
Differentiation												
Well to moderately	1			1			1					
Poorly	1.35	1.04-1.74	0.026	1.48	1.11-1.96	0.007	1.06	0.82-1.36	0.662			
Biliary stent												
No	1						1					
Yes	0.98	0.66-1.46	0.939				0.81	0.55-1.20	0.297			
Liver metastasis												
No	1			1			1			1		
Yes	1.25	0.98-1.61	0.077	1.22	0.93-1.60	0.135	1.51	1.19-1.93	0.001	1.54	1.19-2.01	0.001
Chemotherapy												
Gemcitabine single	1			1			1			1		
Other regimens	0.68	0.52-0.89	0.004	0.70	0.53-0.93	0.015	0.78	0.60-1.01	0.062	0.86	0.65-1.14	0.303
Pretreatment NLR												
< 2.60	1			1			1			1		
≥ 2.60	1.77	1.37-2.29	< 0.001	1.09	0.81-1.48	0.545	1.61	1.26-2.07	< 0.001	1.03	0.78-1.36	0.816
Post-treatment NLR												
< 2.62	1			1			1			1		
≥ 2.62	2.42	1.87-3.14	< 0.001	2.47	1.84-3.32	< 0.001	2.51	1.93-3.26	< 0.001	2.59	1.94-3.47	< 0.001
CA19-9 reduction												
< 18%	1			1			1			1		
≥ 18%	0.53	0.41-0.69	< 0.001	0.51	0.39-0.67	< 0.001	0.54	0.46-0.75	< 0.001	0.6	0.47-0.78	< 0.001
CEA (ng/mL)												
≤ 5	1			1			1			1		
> 5	1.27	0.98-1.65	0.066	1.20	0.91-1.57	0.187	1.26	0.98-1.62	0.074	1.17	0.90-1.52	0.231

Univariate analysis and multivariate survival analysis were performed using Cox proportional hazard model, and *P* values < 0.05 were considered to

indicate statistical significance. Significant values are in boldface type. CI: Confidence interval; HR: Hazard ratio; ECOG: Eastern Cooperative Oncology Group; NLR: Neutrophil-to-lymphocyte ratio; CA19-9: Carbohydrate antigen 19-9; CEA: Carcinoembryonic antigen.

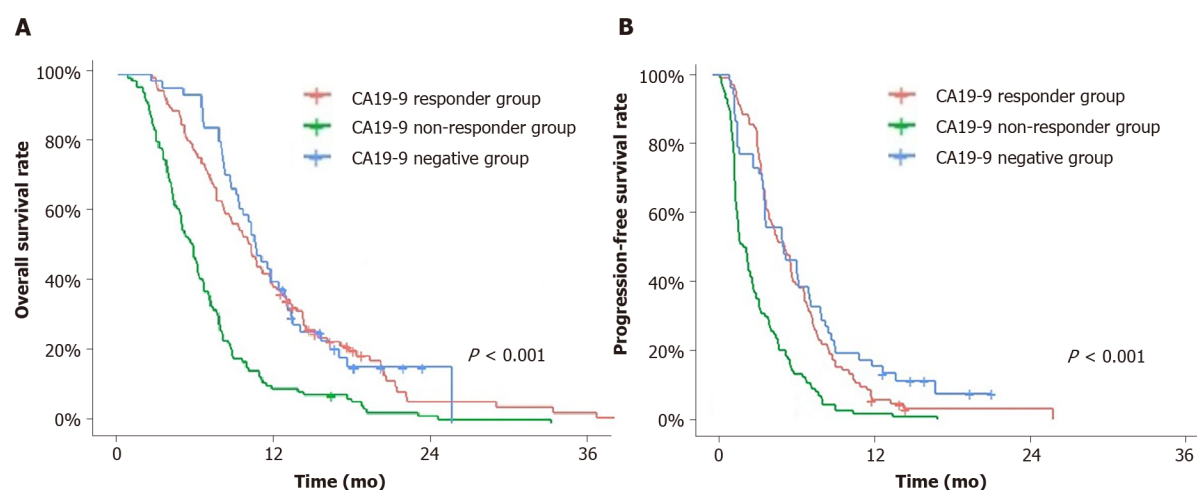


Figure 1 Overall survival and progression-free survival. A and B: Overall survival (A) and progression-free survival (B) of the following groups: Carbohydrate antigen 19-9 (CA19-9) responder group, CA19-9 non-responder group and CA19-9-negative group. CA19-9 responder group and CA19-9 negative group showed significantly longer overall survival and progression-free survival than CA19-9 non-responder group. CA19-9: Carbohydrate antigen 19-9.

Combination of CA19-9 decline and post-treatment NLR as prognostic markers in CA19-9-positive group

CA19-9-positive patients ($n = 219$) were divided into three groups according to CA19-9 reduction and post-treatment NLR. Group 1 comprised CA19-9 responders and post-chemotherapy NLR < 2.62 , Group 2 comprised CA19-9 responders or post-chemotherapy NLR < 2.62 , and Group 3 comprised CA19-9 non-responders and post-chemotherapy NLR ≥ 2.62 . OS and PFS were compared among the three groups using Kaplan-Meier survival curve with log-rank test.

All groups were significantly different from each other in the OS and PFS curves using the log-rank test. The median OS of Group 1 was 11.0 mo (95%CI: 9.6-14.2), 7.7 mo (95%CI: 6.5-8.8) for Group 2 and 3.9 mo (95%CI: 3.5-5.2) for Group 3. The median PFS of Group 1 was 6.3 mo (95%CI: 4.9-7.8), 3.8 mo (95%CI: 2.9-4.9) for Group 2, 2.0 mo (95%CI: 1.8-2.7) for Group 3 (Figure 2).

First response of the chemotherapy and association of CA19-9 18% decline and post-treatment NLR

We compared the first response evaluation of the cohort by RECIST criteria 1.1 according to post-treatment NLR and CA19-9 response. Patients with post-treatment NLR < 2.62 showed statistically better clinical response than patients with post-treatment NLR ≥ 2.62 did. CA19-9 responders showed better clinical response than non-responders did (Supplementary Table 3).

In CA19-9 responders and non-responders, post-treatment NLR discriminated better clinical response of post-treatment NLR < 2.62 group from ≥ 2.62 group. In CA19-9 responders, the response evaluation of post-treatment NLR < 2.62 vs ≥ 2.62 was as follows: Partial response (PR) 52.2% vs 26.3%, stable disease (SD) 43.3% vs 55.3%, progressive disease (PD) 4.5% vs 18.4% ($P = 0.002$). In CA19-9 non-responders, the response evaluation of post-treatment NLR < 2.62 vs ≥ 2.62 was as follows: PR 10.3% vs 6.7%, SD 53.8% vs 28.0% and PD 35.9% vs 65.3% ($P = 0.009$). The combination of CA19-9 decline and post-treatment NLR revealed a significant correlation with clinical response (Table 3).

Post-treatment NLR as a prognostic marker in CA19-9-negative group

First response of the chemotherapy and association of post-treatment NLR in CA19-9-negative group: In the CA19-9-negative cohort ($n = 52$), the post-treatment NLR < 2.62 group showed better OS and PFS than the NLR ≥ 2.62 group (median OS 12.7 mo vs 7.7 mo, $P < 0.001$; PFS 6.7 mo vs 2.1 mo, $P < 0.001$) (Figure 3). In each CA19-9 true-negative and false-negative group, post-treatment NLR discriminated better prognosis

Table 3 The association of the first response evaluation and post-treatment neutrophil-to-lymphocyte ratio according to carbohydrate antigen 19-9 response in carbohydrate antigen 19-9 positive group

Decline of CA19-9 ≥ 18%					Decline of CA19-9 < 18%					
Post-treatment NLR	< 2.62		≥ 2.62			< 2.62		≥ 2.62		
	<i>n</i> = 67	%	<i>n</i> = 38	%	<i>P</i> value ¹	<i>n</i> = 39	%	<i>n</i> = 75	%	<i>P</i> value ¹
1 st Response					0.002					0.009
CR/PR	35	52.2	10	26.3		4	10.3	5	6.7	
SD	29	43.3	21	55.3		21	53.8	21	28.0	
PD	3	4.5	7	18.4		14	35.9	49	65.3	

¹*P* value from linear-by-linear association test. NLR: Neutrophil-to-lymphocyte ratio; CA19-9: Carbohydrate antigen 19-9; CR: Complete response; PR: Partial response; SD: Stable disease; PD: Progressive disease.

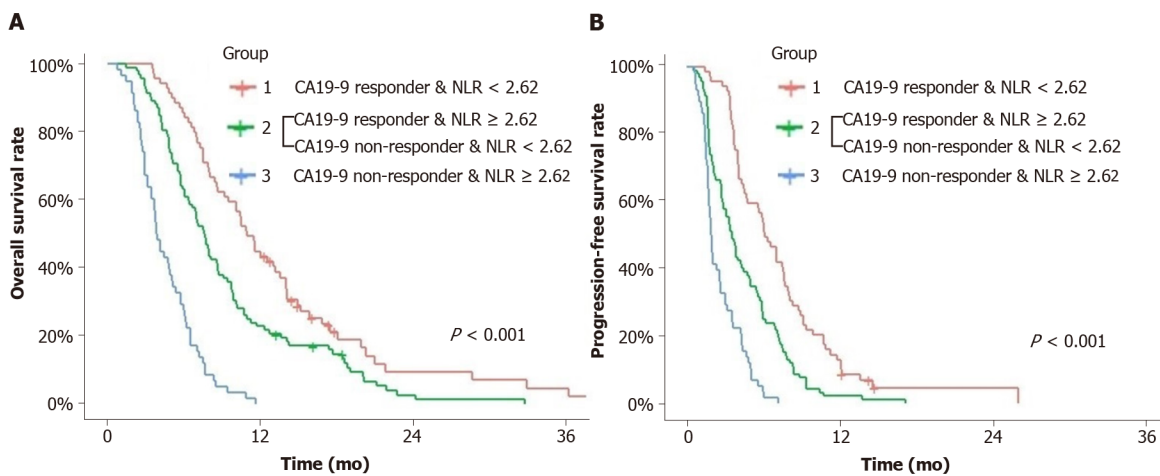


Figure 2 Overall survival and progression-free survival. A and B: Overall survival (A) and progression-free survival (B) of the groups divided by carbohydrate antigen 19-9 response and post-treatment neutrophil-to-lymphocyte ratio. All groups were significantly different from each other in the overall survival and progression-free survival curves and Group 1 showed better overall survival and progression-free survival than others. CA19-9: Carbohydrate antigen 19-9; NLR: Neutrophil-to-lymphocyte ratio.

of NLR < 2.62 group from ≥ 2.62 group with statistical significance.

The post-treatment NLR < 2.62 group showed a better clinical response at the first response evaluation than the NLR ≥ 2.62 group ($P = 0.032$) (Table 4).

DISCUSSION

In this study, we showed that decline of CA19-9 and post-treatment NLR were independent prognostic factors in advanced pancreatic cancer treated with the first line systemic chemotherapy. Post-treatment NLR 2.62 could discriminate better prognosis in both CA19-9-positive and -negative groups. Combination of 18% decline of CA19-9 and post-treatment NLR < 2.62 could improve prognostic accuracy in CA19-9 positive group.

Baseline CA19-9 level is a prognostic marker in both resectable and advanced pancreatic cancer[22]. Change in CA19-9 Level is also prognostic; a decline in CA19-9 Level from pre- to post-operation is a predictive marker for improved survival in patients who underwent surgical resection[23,24]. In patients undergoing systemic chemotherapy, a decline in CA19-9 Level from baseline to the time of response evaluation is considered prognostic[9,25-30]. However, most studies investigating the prognostic role of CA19-9 kinetics were retrospective and study cohorts were heterogeneous; some included all the patients regardless of baseline CA19-9 level and others included only patients with elevated CA19-9. The cut-off values of decline of CA 19-9 for prognosis was determined by different methods, and they varied from 0 to 50% in

Table 4 The association of the first response evaluation and post-treatment neutrophil-to-lymphocyte ratio in carbohydrate antigen 19-9 negative group

CA19-9 negative group <i>n</i> = 52					
Post-treatment NLR	< 2.62		≥ 2.62		<i>P</i> value ¹
	<i>n</i> = 37	%	<i>n</i> = 15	%	
1 st Response					0.032
CR/PR	8	21.6	3	20.0	
SD	25	67.6	4	26.7	
PD	4	10.8	8	53.3	

¹*P* value from linear-by-linear association test. NLR: Neutrophil-to-lymphocyte ratio; CA19-9: Carbohydrate antigen 19-9; CR: Complete response; PR: Partial response; SD: Stable disease; PD: Progressive disease.

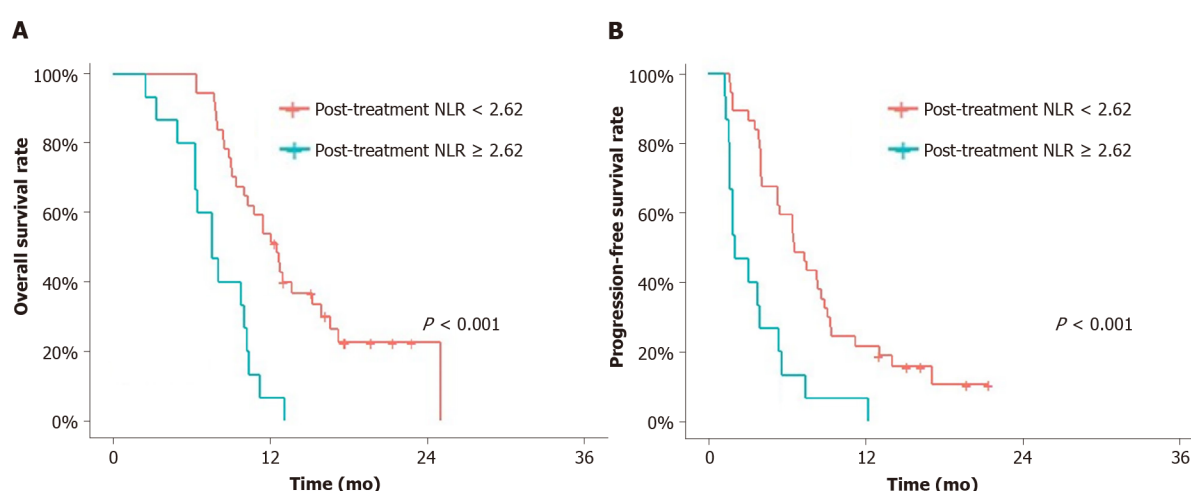


Figure 3 Overall survival and progression-free survival. A and B: Overall survival (A) and progression-free survival (B) of the carbohydrate antigen 19-9-negative groups according to post-treatment neutrophil-to-lymphocyte ratio (NLR). Post-treatment NLR < 2.62 group showed significantly better overall survival and progression-free survival than post treatment NLR ≥ 2.62. NLR: Neutrophil-to-lymphocyte ratio.

their studies[25-30].

In this study, we divided the patients into CA19-9-positive and -negative groups and analyzed CA19-9 response in the CA19-9-positive group. We compared the different cut-off values of CA19-9 decline at the first response evaluation in the CA19-9 positive group (*n* = 219), and 18% decline of the CA19-9 level which maximized the You-den index in the ROC curve for one-year survival was determined as cut-off value. Patients with ≥ 18% and < 18% declines showed good discriminating power using a log-rank test between the groups. This result is similar with previous studies with large cohort which showed 20% decline of CA19-9 is prognostic[28-30]. And 18% reduction of CA19-9 was associated with better radiologic response at the first response evaluation.

The prognostic significance of NLR in pancreatic cancer was explored by many studies, and different cut-off values from two to five were used[31]. This study adapted NLR 2.60 and 2.62 for pre- and post-treatment NLR as the optimal cut-off. Post-treatment NLR was more prognostic than pre-treatment NLR. Post-treatment NLR 2.62 showed the area under the curve of 0.73 in ROC curve for 1- year survival. This is as high as that of 18% decline of CA 19-9 with AUC of 0.75 (Supplementary Figure 1).

A few studies have shown that NLR kinetics could predict treatment outcome in pancreatic cancer patients during systemic chemotherapy[32-34]. To evaluate the prognostic significance of NLR, Chen *et al*[34] divided the patients by increased or decreased NLR from the baseline to the response evaluation, and Luo *et al*[33] divided the patients by baseline NLR 3.1 and further subdivided by increased or decreased NLR from the baseline to the response evaluation.

In this study, we simply divided the patients by post-treatment NLR 2.62. Although there has been no consensus for a normal NLR value, dividing patients within the cut-off range of NLR (< 2.62 *vs* ≥ 2.62) showed better predictive power than by dividing patients based on change of NLR (increased *vs* decreased) between pre- and post-treatment in this study.

We showed that a combination of the two most significant factors in survival, namely CA19-9 response and post-treatment NLR < 2.62 , showed well-established groups based on their prognosis. And they showed positive correlation with radiologic response at the first response evaluation. Among the patients in post-treatment NLR < 2.62 and CA19-9 responder group, only 4.3% had radiological PD. These two factors could be used as prognostic markers and adjunctive tools for response evaluation in the patients with elevated CA19-9 levels.

In addition, we divided CA19-9-negative groups into true-negative and false-negative groups. In the baseline characteristics, true-negative group showed no difference from positive group but, false-negative group showed relatively better clinical variables. Moreover, survival was better in false-negative group than in CA19-9-positive or true-negative groups. Considering CA19-9 correlates with stage of disease, false-negative CA19-9 group might indicate less aggressive disease than CA19-9 positive group[24]. The patients with CA19-9-true-negativity was 7.8% in this study, and their median survival was similar to that of CA19-9 positive group. Although, Lewis blood type or genotype was not evaluated in this study, some of these patients might be Lewis negative group considering CA19-9 was not elevated with disease progression. The proportion of CA19-9-true-negativity is similar to that of Lewis negative group in previous studies[35,36]. Further study is needed to confirm the relationship between CA19-9 level and prognosis with evaluation of Lewis blood type.

We showed that post treatment NLR (< 2.62) group could discriminate better prognosis in both false-positive and true-positive group. In addition, response evaluation was more dependent on radiologic evaluation in CA19-9 negative group than in CA19-9 positive group. CEA could be helpful; however, about 30%-60% of patients are CEA-positive[37-39]. In this study, only 19.2% ($n = 10$) of CA19-9-negative patients were CEA-positive. Post-treatment NLR could be particularly helpful to predict prognosis, and could be applied as an adjunctive tool for response evaluation in CA19-9 negative group.

Limitations of the study

This study aimed to assess the prognostic significance of NLR and CA19-9 in patients with advanced pancreatic adenocarcinoma who receive first-line chemotherapy; its potential has been confirmed. However, due to the retrospective nature of the study and the use of single-center data, our study was limited by selection bias. Despite several efforts to reduce selection bias, including the use of multivariate analyses, unadjusted bias may still be present.

Lewis blood type or genotype was not evaluated, and the CA19-9-negative group had a small sample size ($n = 52$); thus, results obtained within the group should be interpreted with caution.

CONCLUSION

In advanced pancreatic cancer patients positive for CA19-9 and treated with systemic chemotherapy, the combination of post-treatment NLR < 2.62 and 18% decline of CA19-9 at the first response evaluation is a good prognostic marker. Post-treatment NLR < 2.62 alone could be used as a prognostic marker and an adjunctive tool for response evaluation in CA19-9-negative patients.

ARTICLE HIGHLIGHTS

Research background

A decline of serum carbohydrate antigen 19-9 (CA19-9) levels during systemic chemotherapy is considered as a prognostic marker in advanced pancreatic cancer. Neutrophil-to-lymphocyte ratio (NLR) has been studied as a simple and useful prognostic marker.

Research motivation

This study investigated prognostic significance of pre- and post-treatment NLR and decline of CA19-9 in advanced pancreatic cancer.

Research objectives

To assess the prognostic significance of NLR and CA19-9 in patients with advanced pancreatic adenocarcinoma received first-line chemotherapy.

Research methods

We retrospectively analyzed patients with advanced pancreatic cancer who received first-line chemotherapy. Patients were divided according to CA19-9 positivity and pre- and post-treatment NLR levels. We evaluated survival analysis and response of the treatment according to the cut-off value of post-treatment NLR and decline of CA19-9 determined by time-dependent receiver operating characteristic curve.

Research results

We included 271 patients in this study. Cut-off value of NLR and CA19-9 reduction was determined as 2.62 and 18%. Multivariate analysis showed that post-treatment NLR and CA19-9 decline were significantly associated with survival. The combination of CA19-9 decline and post-treatment NLR showed a significant correlation with clinical response in CA19-9 positive group. Within the CA19-9-negative group, the post-treatment NLR < 2.62 group showed better survival and better clinical response.

Research conclusions

In advanced pancreatic cancer patients, the combination of post-treatment NLR and decline of CA19-9 is a good prognostic marker. Post-treatment NLR alone could be used as a prognostic marker and an adjunctive tool for response evaluation in CA19-9-negative patients.

Research perspectives

Future clinical trials for metastatic pancreatic cancer need to include post-treatment NLR and decline CA19-9 as clinical indicators.

REFERENCES

- 1 Siegel RL, Miller KD, Jemal A. Cancer statistics, 2018. *CA Cancer J Clin* 2018; **68**: 7-30 [PMID: 29313949 DOI: 10.3322/caac.21442]
- 2 Bray F, Ferlay J, Soerjomataram I, Siegel RL, Torre LA, Jemal A. Global cancer statistics 2018: GLOBOCAN estimates of incidence and mortality worldwide for 36 cancers in 185 countries. *CA Cancer J Clin* 2018; **68**: 394-424 [PMID: 30207593 DOI: 10.3322/caac.21492]
- 3 Gillen S, Schuster T, Meyer Zum Büschenfelde C, Friess H, Kleeff J. Preoperative/neoadjuvant therapy in pancreatic cancer: a systematic review and meta-analysis of response and resection percentages. *PLoS Med* 2010; **7**: e1000267 [PMID: 20422030 DOI: 10.1371/journal.pmed.1000267]
- 4 Conroy T, Desseigne F, Ychou M, Bouché O, Guimbaud R, Bécauarn Y, Adenis A, Raoul JL, Gourgou-Bourgade S, de la Fouchardière C, Bennouna J, Bachet JB, Khemissa-Akouz F, Péré-Vergé D, Delbaldo C, Assenat E, Chauffert B, Michel P, Montoto-Grillot C, Ducreux M; Groupe Tumeurs Digestives of Unicancer; PRODIGE Intergroup. FOLFIRINOX vs gemcitabine for metastatic pancreatic cancer. *N Engl J Med* 2011; **364**: 1817-1825 [PMID: 21561347 DOI: 10.1056/NEJMoa1011923]
- 5 Von Hoff DD, Ervin T, Arena FP, Chiorean EG, Infante J, Moore M, Seay T, Tjuland SA, Ma WW, Saleh MN, Harris M, Reni M, Dowden S, Laheru D, Bahary N, Ramanathan RK, Tabernero J, Hidalgo M, Goldstein D, Van Cutsem E, Wei X, Iglesias J, Renschler MF. Increased survival in pancreatic cancer with nab-paclitaxel plus gemcitabine. *N Engl J Med* 2013; **369**: 1691-1703 [PMID: 24131140 DOI: 10.1056/NEJMoa1304369]
- 6 Tempero MA. NCCN Guidelines Updates: Pancreatic Cancer. *J Natl Compr Canc Netw* 2019; **17**: 603-605 [PMID: 31117041]
- 7 Brambs HJ, Claussen CD. Pancreatic and ampullary carcinoma. Ultrasound, computed tomography, magnetic resonance imaging and angiography. *Endoscopy* 1993; **25**: 58-68 [PMID: 8453928 DOI: 10.1055/s-2007-1009126]
- 8 Goonetilleke KS, Siriwardena AK. Systematic review of carbohydrate antigen (CA 19-9) as a biochemical marker in the diagnosis of pancreatic cancer. *Eur J Surg Oncol* 2007; **33**: 266-270 [PMID: 17097848 DOI: 10.1016/j.ejso.2006.10.004]
- 9 Ballehaninna UK, Chamberlain RS. The clinical utility of serum CA 19-9 in the diagnosis, prognosis and management of pancreatic adenocarcinoma: An evidence based appraisal. *J Gastrointest Oncol*

- 2012; **3**: 105-119 [PMID: [22811878](#) DOI: [10.3978/j.issn.2078-6891.2011.021](#)]
- 10 **Tempero MA**, Uchida E, Takasaki H, Burnett DA, Steplewski Z, Pour PM. Relationship of carbohydrate antigen 19-9 and Lewis antigens in pancreatic cancer. *Cancer Res* 1987; **47**: 5501-5503 [PMID: [3308077](#)]
 - 11 **Marrelli D**, Caruso S, Pedrazzani C, Neri A, Fernandes E, Marini M, Pinto E, Roviello F. CA19-9 serum levels in obstructive jaundice: clinical value in benign and malignant conditions. *Am J Surg* 2009; **198**: 333-339 [PMID: [19375064](#) DOI: [10.1016/j.amjsurg.2008.12.031](#)]
 - 12 **Grivennikov SI**, Greten FR, Karin M. Immunity, inflammation, and cancer. *Cell* 2010; **140**: 883-899 [PMID: [20303878](#) DOI: [10.1016/j.cell.2010.01.025](#)]
 - 13 **Dunn GP**, Old LJ, Schreiber RD. The immunobiology of cancer immunosurveillance and immunoediting. *Immunity* 2004; **21**: 137-148 [PMID: [15308095](#) DOI: [10.1016/j.immuni.2004.07.017](#)]
 - 14 **Mantovani A**, Allavena P, Sica A, Balkwill F. Cancer-related inflammation. *Nature* 2008; **454**: 436-444 [PMID: [18650914](#) DOI: [10.1038/nature07205](#)]
 - 15 **Yu SL**, Xu LT, Qi Q, Geng YW, Chen H, Meng ZQ, Wang P, Chen Z. Serum lactate dehydrogenase predicts prognosis and correlates with systemic inflammatory response in patients with advanced pancreatic cancer after gemcitabine-based chemotherapy. *Sci Rep* 2017; **7**: 45194 [PMID: [28345594](#) DOI: [10.1038/srep45194](#)]
 - 16 **Yamada Y**, Fujii H, Watanabe D, Kato-Hayashi H, Ohata K, Kobayashi R, Ishihara T, Uemura S, Iwashita T, Shimizu M, Suzuki A. Severe Neutropenia is Associated with Better Clinical Outcomes in Patients with Advanced Pancreatic Cancer Who Receive Modified FOLFIRINOX Therapy. *Cancers (Basel)* 2018; **10** [PMID: [30453583](#) DOI: [10.3390/cancers10110454](#)]
 - 17 **Howard R**, Kanetsky PA, Egan KM. Exploring the prognostic value of the neutrophil-to-lymphocyte ratio in cancer. *Sci Rep* 2019; **9**: 19673 [PMID: [31873162](#) DOI: [10.1038/s41598-019-56218-z](#)]
 - 18 **Hwang I**, Kang J, Ip HNN, Jeong JH, Kim KP, Chang HM, Yoo C, Ryoo BY. Prognostic factors in patients with metastatic or recurrent pancreatic cancer treated with first-line nab-paclitaxel plus gemcitabine: implication of inflammation-based scores. *Invest New Drugs* 2019; **37**: 584-590 [PMID: [30324344](#) DOI: [10.1007/s10637-018-0681-y](#)]
 - 19 **Asaoka T**, Miyamoto A, Maeda S, Tsujie M, Hama N, Yamamoto K, Miyake M, Haraguchi N, Nishikawa K, Hirao M, Ikeda M, Sekimoto M, Nakamori S. Prognostic impact of preoperative NLR and CA19-9 in pancreatic cancer. *Pancreatol* 2016; **16**: 434-440 [PMID: [26852169](#) DOI: [10.1016/j.pan.2015.10.006](#)]
 - 20 **Song JY**, Chen MQ, Guo JH, Lian SF, Xu BH. Combined pretreatment serum CA19-9 and neutrophil-to-lymphocyte ratio as a potential prognostic factor in metastatic pancreatic cancer patients. *Medicine (Baltimore)* 2018; **97**: e9707 [PMID: [29369199](#) DOI: [10.1097/MD.0000000000009707](#)]
 - 21 **Sakamoto T**, Saito H, Uchinaka EI, Morimoto M, Amisaki M, Tokuyasu N, Honjo S, Ashida K, Fujiwara Y. The Combination of Neutrophil-to-lymphocyte Ratio and Serum Carbohydrate Antigen 19-9 Level as a Prognostic Indicator in Patients with Recurrent Pancreatic Cancer. *Anticancer Res* 2018; **38**: 5497-5503 [PMID: [30194208](#) DOI: [10.21873/anticancer.12883](#)]
 - 22 **Boeck S**, Stieber P, Holdenrieder S, Wilkowski R, Heinemann V. Prognostic and therapeutic significance of carbohydrate antigen 19-9 as tumor marker in patients with pancreatic cancer. *Oncology* 2006; **70**: 255-264 [PMID: [16899980](#) DOI: [10.1159/000094888](#)]
 - 23 **Kondo N**, Murakami Y, Uemura K, Hayashidani Y, Sudo T, Hashimoto Y, Nakashima A, Sakabe R, Shigemoto N, Kato Y, Ohge H, Sueda T. Prognostic impact of perioperative serum CA 19-9 Levels in patients with resectable pancreatic cancer. *Ann Surg Oncol* 2010; **17**: 2321-2329 [PMID: [20336387](#) DOI: [10.1245/s10434-010-1033-0](#)]
 - 24 **Ferrone CR**, Finkelstein DM, Thayer SP, Muzikansky A, Fernandez-delCastillo C, Warshaw AL. Perioperative CA19-9 Levels can predict stage and survival in patients with resectable pancreatic adenocarcinoma. *J Clin Oncol* 2006; **24**: 2897-2902 [PMID: [16782929](#) DOI: [10.1200/JCO.2005.05.3934](#)]
 - 25 **Bauer TM**, El-Rayes BF, Li X, Hammad N, Philip PA, Shields AF, Zalupski MM, Bekaii-Saab T. Carbohydrate antigen 19-9 is a prognostic and predictive biomarker in patients with advanced pancreatic cancer who receive gemcitabine-containing chemotherapy: a pooled analysis of 6 prospective trials. *Cancer* 2013; **119**: 285-292 [PMID: [22786786](#) DOI: [10.1002/cncr.27734](#)]
 - 26 **Tabernero J**, Chiorean EG, Infante JR, Hingorani SR, Ganju V, Weekes C, Scheithauer W, Ramanathan RK, Goldstein D, Penenberg DN, Romano A, Ferrara S, Von Hoff DD. Prognostic factors of survival in a randomized phase III trial (MPACT) of weekly nab-paclitaxel plus gemcitabine vs gemcitabine alone in patients with metastatic pancreatic cancer. *Oncologist* 2015; **20**: 143-150 [PMID: [25582141](#) DOI: [10.1634/theoncologist.2014-0394](#)]
 - 27 **Ko AH**, Hwang J, Venook AP, Abbruzzese JL, Bergsland EK, Tempero MA. Serum CA19-9 response as a surrogate for clinical outcome in patients receiving fixed-dose rate gemcitabine for advanced pancreatic cancer. *Br J Cancer* 2005; **93**: 195-199 [PMID: [15999098](#) DOI: [10.1038/sj.bjc.6602687](#)]
 - 28 **Halm U**, Schumann T, Schiefke I, Witzigmann H, Mössner J, Keim V. Decrease of CA 19-9 during chemotherapy with gemcitabine predicts survival time in patients with advanced pancreatic cancer. *Br J Cancer* 2000; **82**: 1013-1016 [PMID: [10737382](#) DOI: [10.1054/bjoc.1999.1035](#)]
 - 29 **Chiorean EG**, Von Hoff DD, Reni M, Arena FP, Infante JR, Bathini VG, Wood TE, Mainwaring PN, Muldoon RT, Clingan PR, Kunzmann V, Ramanathan RK, Tabernero J, Goldstein D, McGovern D, Lu B, Ko A. CA19-9 decrease at 8 wk as a predictor of overall survival in a randomized phase III trial

- (MPACT) of weekly nab-paclitaxel plus gemcitabine vs gemcitabine alone in patients with metastatic pancreatic cancer. *Ann Oncol* 2016; **27**: 654-660 [PMID: [26802160](#) DOI: [10.1093/annonc/mdw006](#)]
- 30 **Robert M**, Jarlier M, Gourgou S, Desseigne F, Ychou M, Bouché O, Juzyna B, Conroy T, Bennouna J. Retrospective Analysis of CA19-9 Decrease in Patients with Metastatic Pancreatic Carcinoma Treated with FOLFIRINOX or Gemcitabine in a Randomized Phase III Study (ACCORD11/PRODIGE4). *Oncology* 2017; **93**: 367-376 [PMID: [28982109](#) DOI: [10.1159/000477850](#)]
 - 31 **Zhou Y**, Wei Q, Fan J, Cheng S, Ding W, Hua Z. Prognostic role of the neutrophil-to-lymphocyte ratio in pancreatic cancer: A meta-analysis containing 8252 patients. *Clin Chim Acta* 2018; **479**: 181-189 [PMID: [29407690](#) DOI: [10.1016/j.cca.2018.01.024](#)]
 - 32 **Xue P**, Kanai M, Mori Y, Nishimura T, Uza N, Kodama Y, Kawaguchi Y, Takaori K, Matsumoto S, Uemoto S, Chiba T. Neutrophil-to-lymphocyte ratio for predicting palliative chemotherapy outcomes in advanced pancreatic cancer patients. *Cancer Med* 2014; **3**: 406-415 [PMID: [24519894](#) DOI: [10.1002/cam4.204](#)]
 - 33 **Luo G**, Guo M, Liu Z, Xiao Z, Jin K, Long J, Liu L, Liu C, Xu J, Ni Q, Yu X. Blood neutrophil-lymphocyte ratio predicts survival in patients with advanced pancreatic cancer treated with chemotherapy. *Ann Surg Oncol* 2015; **22**: 670-676 [PMID: [25155401](#) DOI: [10.1245/s10434-014-4021-y](#)]
 - 34 **Chen Y**, Yan H, Wang Y, Shi Y, Dai G. Significance of baseline and change in neutrophil-to-lymphocyte ratio in predicting prognosis: a retrospective analysis in advanced pancreatic ductal adenocarcinoma. *Sci Rep* 2017; **7**: 753 [PMID: [28392554](#) DOI: [10.1038/s41598-017-00859-5](#)]
 - 35 **Park HD**, Park KU, Song J, Ki CS, Han KS, Kim JQ. The relationship between Lewis/Secretor genotypes and serum carbohydrate antigen 19-9 Levels in a Korean population. *Korean J Lab Med* 2010; **30**: 51-57 [PMID: [20197723](#) DOI: [10.3343/kjlm.2010.30.1.51](#)]
 - 36 **Park KU**, Song J, Han KS, Kim JQ. The fusion allele of the FUT2 (secretor type alpha(1,2)-fucosyltransferase) gene at a high frequency and a new se385 allele in a Korean population. *Ann Hematol* 2005; **84**: 656-660 [PMID: [15809881](#) DOI: [10.1007/s00277-005-1041-5](#)]
 - 37 **Imaoka H**, Mizuno N, Hara K, Hijioka S, Tajika M, Tanaka T, Ishihara M, Hirayama Y, Hieda N, Yoshida T, Okuno N, Shimizu Y, Niwa Y, Yamao K. Prognostic impact of carcinoembryonic antigen (CEA) on patients with metastatic pancreatic cancer: A retrospective cohort study. *Pancreatol* 2016; **16**: 859-864 [PMID: [27256641](#) DOI: [10.1016/j.pan.2016.05.007](#)]
 - 38 **Lee KJ**, Yi SW, Chung MJ, Park SW, Song SY, Chung JB, Park JY. Serum CA 19-9 and CEA levels as a prognostic factor in pancreatic adenocarcinoma. *Yonsei Med J* 2013; **54**: 643-649 [PMID: [23549809](#) DOI: [10.3349/ymj.2013.54.3.643](#)]
 - 39 **Reitz D**, Gerger A, Seidel J, Kornprat P, Samonigg H, Stotz M, Szkandera J, Pichler M. Combination of tumour markers CEA and CA19-9 improves the prognostic prediction in patients with pancreatic cancer. *J Clin Pathol* 2015; **68**: 427-433 [PMID: [25759406](#) DOI: [10.1136/jclinpath-2014-202451](#)]



Published by **Baishideng Publishing Group Inc**
7041 Koll Center Parkway, Suite 160, Pleasanton, CA 94566, USA

Telephone: +1-925-3991568

E-mail: bpgoffice@wjgnet.com

Help Desk: <https://www.f6publishing.com/helpdesk>

<https://www.wjgnet.com>

