

World Journal of *Gastrointestinal Oncology*

World J Gastrointest Oncol 2022 May 15; 14(5): 947-1066



REVIEW

- 947** Gut microbiome in non-alcoholic fatty liver disease associated hepatocellular carcinoma: Current knowledge and potential for therapeutics
Said I, Ahad H, Said A
- 959** *Helicobacter pylori*, gastric microbiota and gastric cancer relationship: Unrolling the tangle
Liatsos C, Papaefthymiou A, Kyriakos N, Galanopoulos M, Doulberis M, Giakoumis M, Petridou E, Mavrogiannis C, Rokkas T, Kountouras J
- 973** *EFNA1* in gastrointestinal cancer: Expression, regulation and clinical significance
Chu LY, Huang BL, Huang XC, Peng YH, Xie JJ, Xu YW

MINIREVIEWS

- 989** Scoping out the future: The application of artificial intelligence to gastrointestinal endoscopy
Minchenberg SB, Walradt T, Glissen Brown JR

ORIGINAL ARTICLE

Retrospective Study

- 1002** Pretreatment serum albumin-to-alkaline phosphatase ratio is an independent prognosticator of survival in patients with metastatic gastric cancer
Li YT, Zhou XS, Han XM, Tian J, Qin Y, Zhang T, Liu JL
- 1014** Preoperative prediction of malignant potential of 2-5 cm gastric gastrointestinal stromal tumors by computerized tomography-based radiomics
Sun XF, Zhu HT, Ji WY, Zhang XY, Li XT, Tang L, Sun YS
- 1027** Improving the accuracy and consistency of clinical target volume delineation for rectal cancer by an education program
Zhang YZ, Zhu XG, Song MX, Yao KN, Li S, Geng JH, Wang HZ, Li YH, Cai Y, Wang WH

Observational Study

- 1037** Digital single-operator cholangioscopy for biliary stricture after cadaveric liver transplantation
Yu JF, Zhang DL, Wang YB, Hao JY

CASE REPORT

- 1050** Primary hepatic angiosarcoma manifesting as hepatic sinusoidal obstruction syndrome: A case report
Ha FS, Liu H, Han T, Song DZ

- 1057** Successful treatment of pancreatic accessory splenic hamartoma by laparoscopic spleen-preserving distal pancreatectomy: A case report

Xu SY, Zhou B, Wei SM, Zhao YN, Yan S

CORRECTION

- 1065** Correction to “Efficacy and safety of endoscopic resection in treatment of small gastric stromal tumors: A state-of-the-art review”

Chen ZM, Peng MS, Wang LS, Xu ZL

ABOUT COVER

Editorial Board Member of *World Journal of Gastrointestinal Oncology*, Zilvinas Dambrauskas, MD, PhD, Professor, Department of Surgery and Institute for Digestive System Research, Lithuanian University of Health Sciences, Kaunas 50161, Lithuania. zilvinas.dambrauskas@lsuni.lt

AIMS AND SCOPE

The primary aim of *World Journal of Gastrointestinal Oncology* (WJGO, *World J Gastrointest Oncol*) is to provide scholars and readers from various fields of gastrointestinal oncology with a platform to publish high-quality basic and clinical research articles and communicate their research findings online.

WJGO mainly publishes articles reporting research results and findings obtained in the field of gastrointestinal oncology and covering a wide range of topics including liver cell adenoma, gastric neoplasms, appendiceal neoplasms, biliary tract neoplasms, hepatocellular carcinoma, pancreatic carcinoma, cecal neoplasms, colonic neoplasms, colorectal neoplasms, duodenal neoplasms, esophageal neoplasms, gallbladder neoplasms, *etc.*

INDEXING/ABSTRACTING

The WJGO is now indexed in Science Citation Index Expanded (also known as SciSearch®), PubMed, PubMed Central, and Scopus. The 2021 edition of Journal Citation Reports® cites the 2020 impact factor (IF) for WJGO as 3.393; IF without journal self cites: 3.333; 5-year IF: 3.519; Journal Citation Indicator: 0.5; Ranking: 163 among 242 journals in oncology; Quartile category: Q3; Ranking: 60 among 92 journals in gastroenterology and hepatology; and Quartile category: Q3. The WJGO's CiteScore for 2020 is 3.3 and Scopus CiteScore rank 2020: Gastroenterology is 70/136.

RESPONSIBLE EDITORS FOR THIS ISSUE

Production Editor: Ying-Yi Yuan; **Production Department Director:** Xiang Li; **Editorial Office Director:** Ya-Juan Ma.

NAME OF JOURNAL

World Journal of Gastrointestinal Oncology

ISSN

ISSN 1948-5204 (online)

LAUNCH DATE

February 15, 2009

FREQUENCY

Monthly

EDITORS-IN-CHIEF

Monjur Ahmed, Florin Burada

EDITORIAL BOARD MEMBERS

<https://www.wjgnet.com/1948-5204/editorialboard.htm>

PUBLICATION DATE

May 15, 2022

COPYRIGHT

© 2022 Baishideng Publishing Group Inc

INSTRUCTIONS TO AUTHORS

<https://www.wjgnet.com/bpg/gerinfo/204>

GUIDELINES FOR ETHICS DOCUMENTS

<https://www.wjgnet.com/bpg/GerInfo/287>

GUIDELINES FOR NON-NATIVE SPEAKERS OF ENGLISH

<https://www.wjgnet.com/bpg/gerinfo/240>

PUBLICATION ETHICS

<https://www.wjgnet.com/bpg/GerInfo/288>

PUBLICATION MISCONDUCT

<https://www.wjgnet.com/bpg/gerinfo/208>

ARTICLE PROCESSING CHARGE

<https://www.wjgnet.com/bpg/gerinfo/242>

STEPS FOR SUBMITTING MANUSCRIPTS

<https://www.wjgnet.com/bpg/GerInfo/239>

ONLINE SUBMISSION

<https://www.f6publishing.com>



Retrospective Study

Pretreatment serum albumin-to-alkaline phosphatase ratio is an independent prognosticator of survival in patients with metastatic gastric cancer

Yu-Ting Li, Xiao-Shu Zhou, Xiao-Ming Han, Jing Tian, You Qin, Tao Zhang, Jun-Li Liu

Specialty type: Oncology

Provenance and peer review:

Unsolicited article; Externally peer reviewed.

Peer-review model: Single blind

Peer-review report's scientific quality classification

Grade A (Excellent): 0
Grade B (Very good): B
Grade C (Good): C, C
Grade D (Fair): 0
Grade E (Poor): 0

P-Reviewer: de Melo FF, Brazil;
Mishra TS, India; Silano F, Brazil

Received: November 9, 2021

Peer-review started: November 9, 2021

First decision: December 12, 2021

Revised: December 26, 2021

Accepted: April 21, 2022

Article in press: April 21, 2022

Published online: May 15, 2022



Yu-Ting Li, Xiao-Shu Zhou, You Qin, Tao Zhang, Jun-Li Liu, Cancer Center, Union Hospital, Tongji Medical College, Huazhong University of Science and Technology, Wuhan 430022, Hubei Province, China

Xiao-Ming Han, Department of Ultrasound Medicine, Jingmen Second People's Hospital, Jingchu University of Technology Affiliated Central Hospital, Jingmen 448000, Hubei Province, China

Jing Tian, Department of Oncology, Hubei Cancer Hospital, The Seventh Clinical School Affiliated of Tongji Medical College, Huazhong University of Science and Technology, Wuhan 430000, Hubei Province, China

Corresponding author: Jun-Li Liu, MD, PhD, Associate Chief Physician, Associate Professor, Cancer Center, Union Hospital, Tongji Medical College, Huazhong University of Science and Technology, Jiangnan Road, Wuhan 430022, Hubei Province, China. junli78@foxmail.com

Abstract

BACKGROUND

Previous studies have suggested that a low albumin-to-alkaline phosphatase ratio (AAPR) is associated with a lower survival rate in patients with various malignancies. However, the relationship between pretreatment AAPR and the prognosis of patients with gastric cancer (GC) remains unclear.

AIM

To investigate the prognostic value of AAPR in distant metastatic GC.

METHODS

A total of 191 patients with distant metastatic cancer from a single institute were enrolled in this study. Pretreatment clinical data, including serum albumin and alkaline phosphatase levels, were collected. A chi-square test or Fisher's exact test was applied to evaluate the correlations between AAPR and various clinical parameters in GC patients. The Kaplan-Meier method and Cox proportional hazards regression model were used to evaluate the prognostic efficacy of AAPR in metastatic GC patients. A two-sided *P* value lower than 0.05 was considered statistically significant.

RESULTS

A receiver operating characteristic curve indicated that 0.48 was the optimal threshold value for AAPR. $\text{AAPR} \leq 0.48$ was significantly associated with bone ($P < 0.05$) and liver metastasis ($P < 0.05$). Patients with high levels of AAPR had better survival in terms of overall survival (OS) and progression-free survival (PFS), regardless of the presence of liver/bone metastasis. Pretreatment AAPR was found to be a favorable predictor of OS and PFS based on a multivariate cox regression model. AAPR-M system, constructed based on AAPR and number of metastatic sites, showed superior predictive ability relative to the number of metastatic sites for predicting survival.

CONCLUSION

Pretreatment AAPR may serve as an independent prognostic factor for predicting PFS and OS in patients with metastatic GC. Furthermore, AAPR may assist clinicians with individualizing treatment.

Key Words: Albumin-to-alkaline phosphatase ratio; Gastric cancer; overall survival; Progression-free survival

©The Author(s) 2022. Published by Baishideng Publishing Group Inc. All rights reserved.

Core Tip: Previous studies have suggested that a low albumin-to-alkaline phosphatase ratio (AAPR) is associated with inferior survival in patients with various malignancies. However, the relationship between pretreatment AAPR and the prognosis of patients with gastric cancer (GC) remains unclear. In this study, we showed that pretreatment AAPR was a favorable predictor of overall survival (OS) and progression-free survival (PFS) by the multivariate cox regression model with hazard ratios of 0.476 and 0.527, respectively. Pretreatment AAPR may serve as an independent prognostic factor for predicting PFS and OS in patients with metastatic cancer. Furthermore, AAPR may assist clinicians with individualizing treatment.

Citation: Li YT, Zhou XS, Han XM, Tian J, Qin Y, Zhang T, Liu JL. Pretreatment serum albumin-to-alkaline phosphatase ratio is an independent prognosticator of survival in patients with metastatic gastric cancer. *World J Gastrointest Oncol* 2022; 14(5): 1002-1013

URL: <https://www.wjgnet.com/1948-5204/full/v14/i5/1002.htm>

DOI: <https://dx.doi.org/10.4251/wjgo.v14.i5.1002>

INTRODUCTION

Despite the decline in incidence and mortality over the last decade[1], gastric cancer (GC) is still a severe threat to human health, especially in Eastern Asia, including China, Japan, and Korea[2]. Although more effective treatment regimens have been developed for patients with GC, the prognosis of this disease remains poor, especially for those with distant metastasis, and the 5-year overall survival (OS) rate is only 5.3%[3]. Currently, the recognized tumor-node-metastasis staging system does not provide accurate prognostic information and does not aid clinical decision-making for patients with metastatic cancers[4,5]. Therefore, low cost, easy to obtain, and reliable biomarkers are needed to accurately predict survival for patients with metastatic cancers.

Various biomarkers such as serum levels of programmed cell death ligand 1[6], the platelet-to-lymphocyte ratio[7], the neutrophil-to-lymphocyte ratio[8], and serum levels of high-density lipoprotein cholesterol[9], carcinoembryonic antigen, and carbohydrate antigen 19-9[10], are all currently used prognostic indicators for GC in patients. Nevertheless, the predictive powers of these respective markers are not conclusive and need further validation before being integrated into standard clinical practice. Hence, there is still an urgent need to identify precise predictors of survival for GC patients.

The albumin-to-alkaline phosphatase ratio (AAPR), which is calculated as albumin divided by alkaline phosphatase (ALP), has been shown to be closely associated with clinical outcomes in numerous types of cancer, including hepatocellular carcinoma (HCC)[11], cholangiocarcinoma[12], non-small cell lung cancer (NSCLC)[13,14], small cell lung cancer[15], nasopharyngeal carcinoma[16], and pancreatic ductal adenocarcinoma[17]. Recently, AAPR was found to be significantly decreased in patients with resectable GC, and low level AAPR predicted poor prognosis in GC[18]. However, as far as we know, the use of AAPR as a prognostic indicator of survival in metastatic GC patients has not yet been verified. Therefore, in this study, we focused on the association between AAPR and metastatic GC and evaluated its prognostic capability in patients with metastatic GC.

MATERIALS AND METHODS

Patients and eligibility

From May 2011 to September 2018, we retrospectively enrolled 191 patients diagnosed with distant metastatic GC at the Cancer Center of the Union Hospital of Huazhong University of Science and Technology (Wuhan, China). The inclusion criteria were as follows: the presence of pathologically proven GC; clinically diagnosed distant metastasis; absence of concurrent malignancies; and availability of pretreatment laboratory tests.

This study was retrospectively designed and in line with the Helsinki Declaration's principles and followed existing national legislation. A waiver of informed consent was obtained for the study because this was a retrospective study, and anonymous analyses were employed in place to protect patient confidentiality, meaning there was minimal risk to the patients. The study was approved by the Institutional Ethical Board of Wuhan Union Hospital of Tongji Medical College, Huazhong University of Science and Technology.

Clinical data collection

Clinical data, such as age, sex, smoking status, sites of metastasis, and histopathology, were collected from the hospital medical system. Furthermore, laboratory data, including pretreatment serum levels of albumin and ALP, were collected from the hospital's laboratory service. The AAPR was calculated by dividing the serum albumin by the serum ALP.

Follow-up assessment

Follow-up was performed by a review of medical records and telephone conversation. The last follow-up date was January 31, 2019. The primary endpoints were OS and progression-free survival (PFS). OS refers to the interval between the dates of diagnosis to the date of death due to any cause or last follow-up. PFS was calculated from the date of diagnosis to the date of disease progression or the date of the last follow-up without evidence of progression.

Statistical analyses

All statistical analyses were performed using SPSS software version 23.0 (IBM, Chicago, IL, United States). Receiver operating characteristic (ROC) curve analysis was utilized to estimate the optimal cut-off value of AAPR. A chi-square test or Fisher's exact test was applied to evaluate the correlations between AAPR and various clinical parameters. Propensity score matching was utilized to balance out selection biases. We employed a logistic regression model to estimate propensity scores for all patients. One-to-one nearest-neighbor matching was used between low and high-level AAPR using a 0.1 caliper width. The score-matched pairs were used in the subsequent analyses. Kaplan-Meier (K-M) method was applied to create survival curves using a log-rank test. We employed a Cox proportional hazards model to identify variables that affected the survival of patients with metastatic GC, using univariate and multivariate analyses. A two-sided *P* value lower than 0.05 was considered statistically significant.

RESULTS

Patient characteristics

From May 2011 to September 2018, a total of 191 patients with GC were recruited for our study. The demographics and clinical characteristics of the participants are presented in [Table 1](#). The median age was 56 (range: 20-78) years, and 60 (31.4%) patients were older than 60 years. Among the patients, 105 (55.0%) were male and 45 (23.6%) had a history of smoking. The majority (57.1%) of these patients developed metastasis at only one site. There were 57 (29.8%) patients with liver metastasis and 24 (12.6%) patients with bone metastasis. Approximately half of the patients had poorly differentiated carcinoma (40.3%). A total of 146 (76.4%) patients received Taxane- or fluorouracil-based combination chemotherapy as a first-line treatment.

A ROC curve identified 0.48 as the optimal threshold value of AAPR ([Supplementary Figure 1](#)). The distribution of clinical characteristics between the two groups is listed in [Table 1](#). AAPR \leq 0.48 was significantly associated with bone ($P = 0.023$) and liver metastasis ($P = 0.000$). Higher AAPR values were more often observed in female patients, and patients who had metastasis in one site upon diagnosis. The median follow-up period was 8.9 (range, 1-62.13) months, and 41 patients were still alive at the last follow-up session. Fifty-eight pairs of patients were generated using propensity score matching who showed no significant differences ([Table 1](#)).

K-M survival analysis of AAPR

K-M survival analysis of AAPR for OS and PFS was also conducted as a preliminary evaluation of the prognostic capabilities of AAPR. This K-M analysis suggested that high AAPR values were correlated with longer OS [hazard ratio (HR) = 0.536, 95% confidence interval (CI) = 0.385-0.745, $P < 0.05$] and PFS

Table 1 Baseline patient information and characteristics

Characteristics	Before propensity matching			After propensity matching		
	AAPR ≤ 0.48 ($n = 86$)	AAPR > 0.48 ($n = 105$)	<i>P</i> value	AAPR ≤ 0.48 ($n = 58$)	AAPR > 0.48 ($n = 58$)	<i>P</i> value
Gender						0.265
Male	56	49	0.011	32	26	
Female	30	56		26	32	
Age						0.842
≤ 60	59	72	0.996	39	40	
> 60	27	33		19	18	
Smoking status						0.359
No	61	85	0.018	44	48	
Yes	25	20		14	10	
Number of involved sites						0.264
One	41	68	0.018	30	24	
Multiple	45	37		28	34	
Liver metastasis						1.000
No	48	86	0.000	44	44	
Yes	38	19		14	14	
Bone metastasis						1.00
No	70	97	0.023	50	50	
Yes	16	8		8	8	
Pathology						0.334
High differentiated	3	1	0.201	1	0	
Moderately differentiated	3	4		3	2	
Poorly differentiated	31	46		17	25	
Signet ring cell	13	25		9	13	
Others	2	3		1	1	
Unknown	34	26		27	17	
Treatment regimens						0.378
Combination chemotherapy	63	83	0.520	45	44	
Fluorouracil or taxane alone	11	7		7	3	
Radiotherapy	1	2		1	2	
Best supportive care	11	13		5	9	

AAPR: Albumin-to-alkaline phosphatase ratio.

(HR = 0.611, 95%CI = 0.446–0.837, $P < 0.05$) (Figure 1A and B). The median OS (mOS) and PFS values of patients with AAPR ≤ 0.48 were 7.73 and 4.37 months, respectively, which were significantly shorter compared with patients in the high AAPR group (> 0.48), which had a median OS and PFS of 11.57 and 8.63 months, respectively. Among propensity-matched pairs of patients, similar results were obtained for OS (HR = 0.634, 95%CI = 0.426–0.944, $P < 0.05$) and PFS (HR = 0.584, 95%CI = 0.385–0.884, $P < 0.05$) (Figure 1C and D).

Subgroup analyses

We conducted subgroup analyses to investigate the relationship between AAPR and survival according to the number of sites with metastasis, with or without bone/Liver metastasis. Patients with low AAPR values showed markedly worse OS (HR = 0.512, 95%CI = 0.344–0.763, $P < 0.05$) and PFS (HR = 0.553, 95%CI = 0.376–0.811, $P < 0.05$) compared with those with high AAPR values in the subgroup without

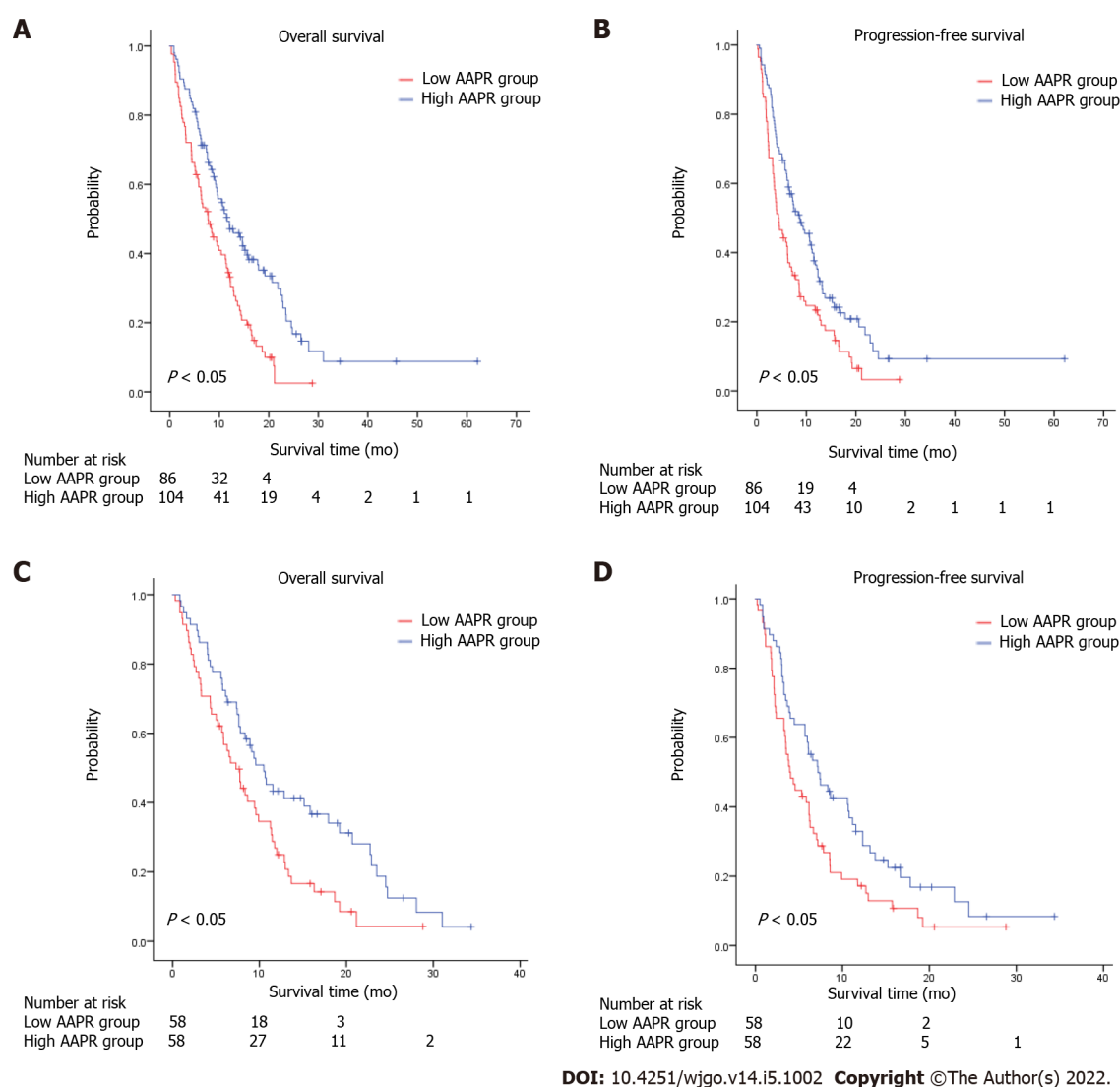


Figure 1 Kaplan-Meier survival estimates between subgroups according to albumin-to-alkaline phosphatase ratio. A: Overall survival (OS) according to albumin-to-alkaline phosphatase ratio (AAPR) before propensity matching; B: Progression-free survival (PFS) according to AAPR before propensity matching; C: OS according to AAPR after propensity matching; D: PFS according to AAPR after propensity matching. AAPR: Albumin-to-alkaline phosphatase ratio.

liver metastasis (Figure 2A and B). Similarly, in the subgroup without bone metastasis, an AAPR ≤ 0.48 was significantly correlated with worse OS (HR = 0.522, 95%CI = 0.366–0.744, $P < 0.05$) and PFS (HR = 0.607, 95%CI = 0.433–0.850, $P < 0.05$) (Figure 2C and D). Not surprisingly, patients with high AAPR values had better OS and PFS in the subgroup without liver/bone metastasis (OS: HR = 0.541, 95%CI = 0.347–0.842, $P < 0.05$; PFS: HR = 0.589, 95%CI = 0.384–0.902, $P < 0.05$) (Figure 2E and F). In patients with one site of metastasis, AAPR > 0.48 was associated with better survival in terms of OS (HR = 0.540, 95%CI = 0.343–0.849, $P < 0.05$) and PFS (HR = 0.567, 95%CI = 0.370–0.869, $P < 0.05$) (Figure 3A and B). Patients receiving fluorouracil or taxane alone as a first-line treatment had a relative short mOS (mOS: 2.40 mo, 95%CI = 1.88–2.92) in the low AAPR group, which was much shorter than in the high AAPR group (mOS: 6.27 mo, 95%CI = 3.27–9.26) (Supplementary Table 1). In contrast, patients who received combination chemotherapy in the low AAPR group had better survival outcomes (mOS: 10.37 mo, 95%CI = 7.40–13.33) (Supplementary Table 1).

Univariate and multivariate analyses

Univariate and multivariate analyses were conducted to estimate the predictive value of AAPR. As shown in Tables 2 and 3, univariate analysis demonstrated that high AAPR levels (HR = 0.611, 95%CI = 0.446–0.837, $P < 0.05$), combined chemotherapy as first-line treatment regimen (HR = 0.448, 95%CI = 0.313–0.639, $P < 0.05$), and only one metastasis site (HR = 1.484, 95%CI = 1.083–2.034, $P < 0.05$) were significantly associated with better PFS in patients with metastatic GC. Meanwhile, high AAPR levels (HR = 0.536, 95%CI = 0.385–0.745, $P < 0.05$), male (HR = 0.705, 95%CI = 0.510–0.975, $P < 0.05$), only one metastasis site (HR = 1.748, 95%CI = 1.264–2.417, $P < 0.05$), and combination chemotherapy as first-line treatment regimen (HR = 0.334, 95%CI = 0.232–0.480, $P < 0.05$) were determined to be favorable

Table 2 Univariate and multivariate analyses of prognostic factors for overall survival for all patients

Variables	Univariate analyses		Multivariate analyses	
	HR (95%CI)	P value	HR (95%CI)	P value
Gender (male <i>vs</i> female)	0.705 (0.510-0.975)	0.035	0.746 (0.508-1.094)	0.133
Age (> 60 <i>vs</i> ≤ 60)	1.125 (0.794-1.594)	0.509	0.808 (0.541-1.207)	0.298
Smoking status (Yes <i>vs</i> No)	1.451 (0.970-2.173)	0.070	1.364 (0.851-2.188)	0.197
Number of involved sites (multiple <i>vs</i> one)	1.748 (1.264-2.417)	0.001	1.425 (1.018-1.997)	0.038
Liver metastasis (Yes <i>vs</i> No)	0.950 (0.674-1.339)	0.731	0.758 (0.511-1.124)	0.167
Bone metastasis (Yes <i>vs</i> No)	1.319 (0.822-2.115)	0.251	1.395 (0.843-2.307)	0.195
Treatment regimens (combination chemotherapy <i>vs</i> others)	0.334 (0.232-0.480)	0.000	0.269 (0.175-0.411)	0.000
AAPR (> 0.48 <i>vs</i> ≤ 0.48)	0.536 (0.385-0.745)	0.000	0.476 (0.328-0.691)	0.000

HR: Hazard ratio; CI: Confidence interval; AAPR: Albumin-to-alkaline phosphatase ratio.

Table 3 Univariate and multivariate analyses of prognostic factors for progression-free survival for all patients

Variables	Univariate analyses		Multivariate analyses	
	HR (95%CI)	P value	HR (95%CI)	P value
Gender (male <i>vs</i> female)	0.759 (0.554-1.041)	0.087	0.772 (0.529-1.126)	0.179
Age (> 60 <i>vs</i> ≤ 60)	1.162 (0.830-1.626)	0.382	0.955 (0.654-1.395)	0.813
Smoking status (Yes <i>vs</i> No)	0.805 (0.550-1.177)	0.262	1.227 (0.781-1.927)	0.375
Number of involved sites (multiple <i>vs</i> one)	1.484 (1.083-2.034)	0.014	1.223 (0.880-1.701)	0.231
Liver metastasis (Yes <i>vs</i> No)	0.950 (0.674-1.339)	0.770	0.737 (0.506-1.073)	0.112
Bone metastasis (Yes <i>vs</i> No)	1.219 (0.762-1.951)	0.409	1.232 (0.754-2.011)	0.405
Treatment regimens (combination chemotherapy <i>vs</i> others)	0.448 (0.313-0.639)	0.000	0.398 (0.263-0.594)	0.000
AAPR (> 0.48 <i>vs</i> ≤ 0.48)	0.611 (0.446-0.837)	0.002	0.527 (0.370-0.751)	0.000

HR: Hazard ratio; CI: Confidence interval; AAPR: Albumin-to-alkaline phosphatase ratio.

prognostic indicators of OS. Subsequent multivariate analyses revealed that AAPR was a significant predictor of both OS (HR = 0.476, 95% CI = 0.328–0.691, $P < 0.05$) and PFS (HR = 0.527, 95% CI = 0.370–0.751, $P < 0.05$) in patients with metastatic GC. AAPR > 0.48 was found to be associated with a favorable prognosis in patients with metastatic GC. Combination chemotherapy predicted better OS (HR = 0.269, 95% CI = 0.175–0.411, $P < 0.05$) and PFS (HR = 0.398, 95% CI = 0.263–0.594, $P < 0.05$) in patients with metastatic GC. We also determined that the number of metastatic sites involved was also an independent prognostic factor of OS (HR = 1.425, 95% CI = 1.018–1.997, $P < 0.05$).

Predictive value of AAPR-M system

According to a previous study conducted in 2016, several factors were associated with worse prognosis, including age, carcinomatosis, and a larger burden of metastatic disease[19]. In our study, the number of metastatic sites was an independent prognostic factor. A combined model named AAPR-M was constructed based on AAPR and number of metastatic sites aimed at finding more prognostic factors for metastatic GC. We classified the patients into three groups according to this innovative AAPR-M system. Patients with high AAPR levels and only one metastatic site were assigned to a low-risk group, patients with more than one metastatic site and a low AAPR level were assigned to a high-risk group, while the others were grouped into a medium-risk group. Strong association with increased death and progression were documented for patients with high risk according to AAPR-M system. The median OS was 14.03 (95% CI: 10.32–17.75) *vs* 9.60 (95% CI: 7.59–11.61) *vs* 5.83 (95% CI: 3.18–8.48) months in the high, medium and low-risk groups, respectively (Figure 4A). Similar results were found in PFS (Figure 4B), suggesting that this AAPR-M system had a very strong predictive ability for survival in patients with metastatic GC.

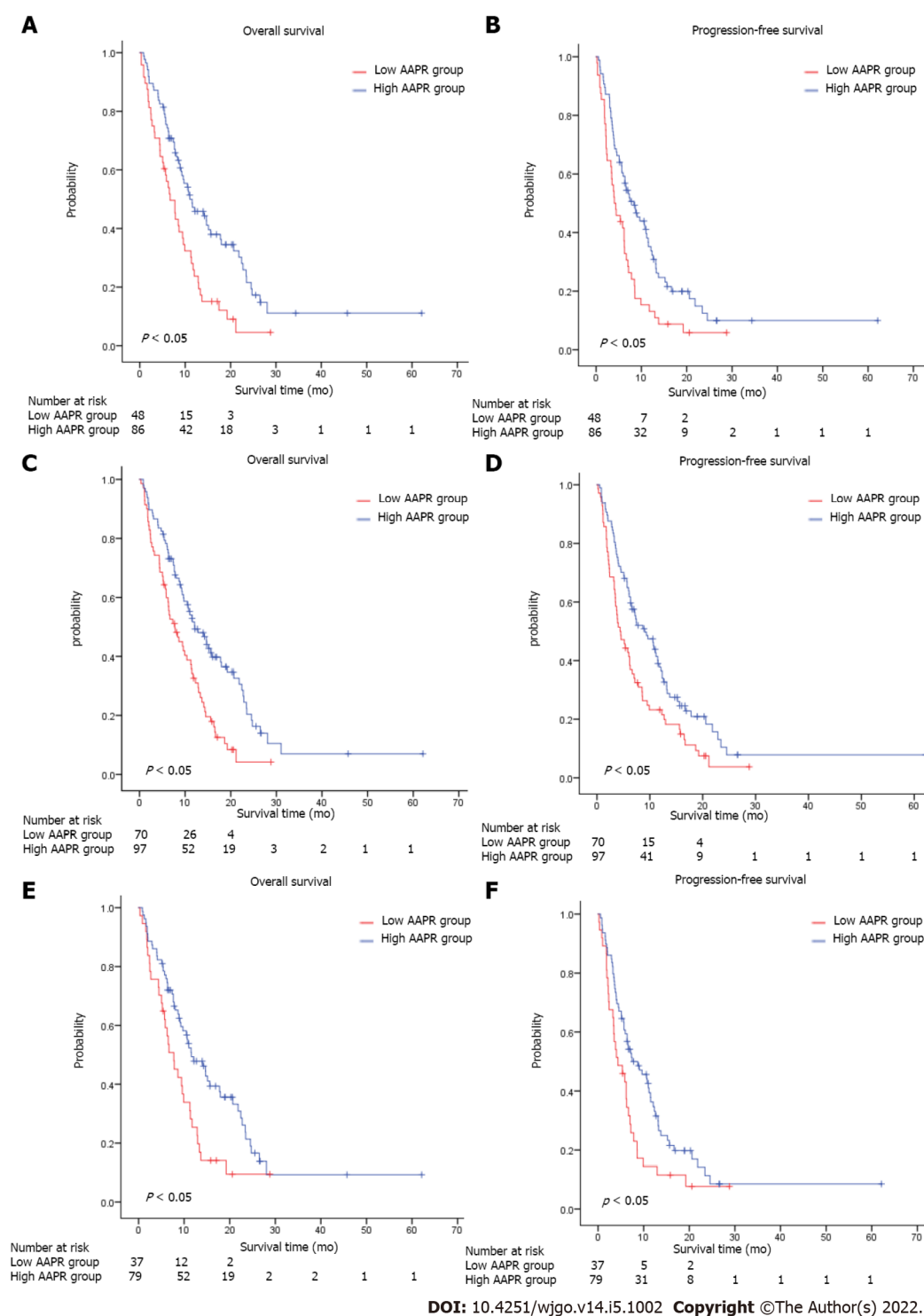


Figure 2 Kaplan-Meier survival estimates of overall survival and progression-free survival according to albumin-to-alkaline phosphatase ratio levels in patients (A and B) without liver metastasis, (C and D) without bone metastasis, (E and F) without liver or bone metastasis. AAPR: Albumin-to-alkaline phosphatase ratio.

We applied area under the curve (AUC) values to compare the predictive ability between AAPR, the number of metastatic sites, and AAPR-M. AAPR-M showed greater AUC compared with the number of metastatic sites in terms of 1-year OS, 2-year OS, and 1-year PFS (Figure 5). The AAPR-M system had a larger χ^2 value relative to the number of metastatic sites for 1-year OS (7.451 vs 6.071), 2-year OS (8.831 vs 1.779), and 1-year PFS (4.239 vs 2.454) prediction in likelihood ratio test analysis. This suggested that AAPR-M was superior to the number of metastatic sites for predicting survival.

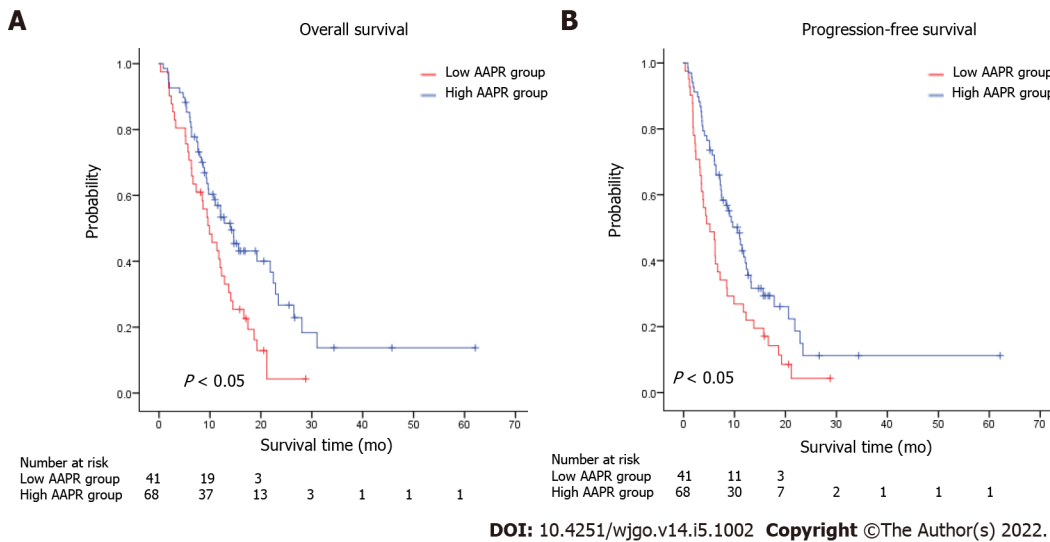


Figure 3 Kaplan–Meier survival estimates of overall survival and progression-free survival according to albumin-to-alkaline phosphatase ratio levels in patients with one site of metastasis. A: Overall survival according to albumin-to-alkaline phosphatase ratio (AAPR); B: Progression-free survival according to AAPR. AAPR: Albumin-to-alkaline phosphatase ratio.

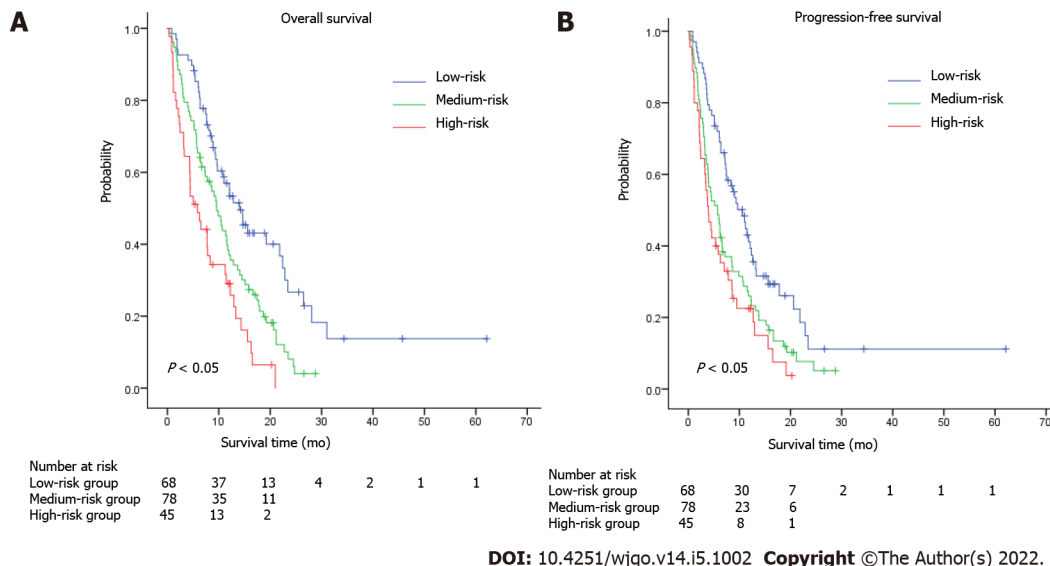


Figure 4 Kaplan–Meier survival estimates of overall survival (A) and progression-free survival (B) according to the AAPR-M risk system (combination of albumin-to-alkaline phosphatase ratio and number of metastatic sites) in metastatic gastric patients.

DISCUSSION

This study evaluated the prognostic relevance of AAPR in patients with metastatic GC and, to the best of our knowledge, was the first study to focus on the relationship between the AAPR and prognosis in metastatic GC. This study demonstrated that smaller AAPR values were correlated with inferior clinical outcomes in terms of OS and PFS in patients with metastatic GC. Furthermore, multivariate analysis demonstrated that AAPR was an independent prognostic indicator of metastatic GC.

Albumin is one of the major plasma proteins that indicate an individual's nutritional status. This protein is involved in maintaining intravascular oncotic pressure, scavenging free radicals, and maintaining steroid hormone hemostasis[20]. Previous studies have demonstrated that hypoalbuminemia is a prognostic indicator in colorectal cancer[21] and glioblastoma multiforme[22]. Notably, low levels of preoperative serum albumin are correlated with poor OS in GC patients after surgery[23], indicating that albumin is a prognostic biomarker for GC.

ALP is a ubiquitous membrane-bound glycoprotein that exist in several mammalian tissues such as liver, bone, and kidney[24]. Serum ALP is closely associated with the presence of liver and bone metastasis in malignant diseases[25–27]. Serum ALP is also an independent predictor of various cancers

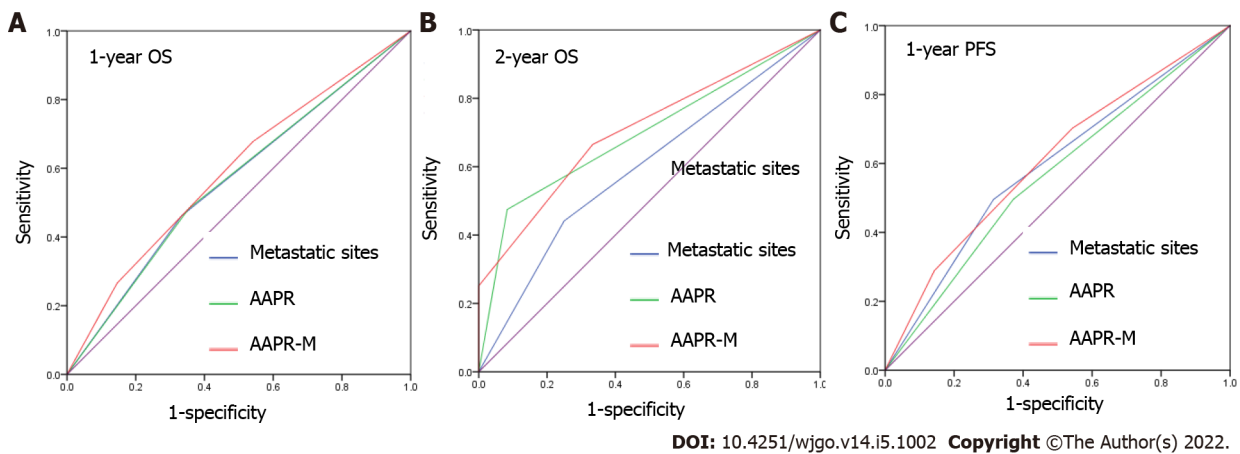


Figure 5 Receiver operating characteristic analysis of the albumin-to-alkaline phosphatase ratio, number of metastatic sites, and AAPR-M system in 1-year overall survival (A), 2-year overall survival (B), and 1-year progression-free survival (C) prediction. PFS: Progression-free survival; OS: Overall survival; AAPR: Albumin-to-alkaline phosphatase ratio.

including breast cancer[28], nasopharyngeal carcinoma[29], prostate cancer[30], and GC[31].

As both albumin and ALP are prognostic indicators of survival in several types of cancer, Chan *et al* [32] derived the albumin-to-alkaline phosphatase ratio to put these two parameters together, and found that AAPR was a superior prognostic indicator compared with albumin and ALP alone in patients with HCC. Thereafter, the prognostic capability of AAPR has been verified in several types of cancer, and the majority of data indicates that low AAPR values are correlated with poorer survival[11,13,16]. Three meta-analyses were recently conducted and a consistent conclusion was drawn, namely, that cancer patients with higher AAPR levels have better survival than patients with lower levels[33-35]. However, the prognostic significance of pretreatment AAPR in GC remains unclear. We suspected, however, that AAPR would be a promising prognostic indicator in patients with metastatic GC.

Therefore, we used pretreatment AAPR as a predictor of survival in patients with metastatic GC. In our cohort, an AAPR lower than 0.48 was associated with more metastatic sites, as well as the presence of liver and bone metastasis. In accordance with our findings, Li *et al*[13] demonstrated that elevated AAPR values were more likely to be found in patients with one site of metastasis and advanced NSCLC. A significant correlation was also discovered between patients with liver/bone metastasis and lower AAPR values[13]. Hence, we speculated that high AAPR values at diagnosis may reflect a relatively less aggressive stage of metastatic GC.

Patients with high AAPR values had significantly longer OS and PFS compared to patients with low AAPR values in our study, suggesting that high AAPR values were correlated with favorable survival in metastatic GC. Furthermore, univariate and multivariate cox regression analyses revealed that AAPR was an independent predictor of survival in terms of OS and PFS in patients with metastatic GC. All of these results collectively suggest that AAPR is an excellent predictor of survival in patients with metastatic GC. We demonstrated that patients with low-level AAPR level received fluorouracil or taxane alone as first-line treatment had an mOS of less than 3 months, while patients received combination chemotherapy had an mOS more than 10 months. For patients with rapidly progressing cancers may aggravate in a short time, and lose the chance of treatment. It is particularly important to precisely confirm the gastric patients with advanced malignant disease who are expected to have a poor prognosis. These results gave us a hint that for patients with low AAPR was associated with poor prognosis, and stronger treatment regimens were needed to prolong survival time. Further analysis showed that AAPR-M system may serve as a supplementary strategy to further improve prognostic efficiency for metastatic GC.

However, this study had several limitations. First, this study was retrospective in design, and all of the data was collected from a single institution, which may have introduced bias in the results. Multicenter prospective studies are needed to verify and extend these findings. Second, the cut-off value of AAPR was obtained from a ROC curve in this study. To date, a consensus regarding the optimal threshold has not been reached, and external validation is required. Third, only pretreatment AAPR was adopted to evaluate its prognostic capability in metastatic GC; thus, whether dynamic AAPR is related to the prognosis of GC is unclear. Fourth, our conclusions were restricted by the small sample size, and high quality, large scale, prospective cohort studies are needed to validate these conclusions.

CONCLUSION

In conclusion, as far as we know, our study demonstrated that pretreatment AAPR is an independent prognostic indicator of both OS and PFS in patients with metastatic GC for the first time. Patients with high levels of pretreatment AAPR showed better survival compared with those with low levels. To verify the prognostic efficacy of AAPR, prospective studies are needed.

ARTICLE HIGHLIGHTS

Research background

Previous studies have suggested that a low albumin-to-alkaline phosphatase ratio (AAPR) is associated with a lower survival rate in patients with various malignancies.

Research motivation

The predictive ability had been established in several malignancies, however, the relationship between pretreatment AAPR and the prognosis of patients with gastric cancer (GC) remains unclear.

Research objectives

To investigate the prognostic value of AAPR in distant metastatic GC.

Research methods

From May 2011 to September 2018, we retrospectively enrolled 191 patients who were diagnosed with distant metastatic GC.

Research results

Patients with high levels of AAPR had better survival in terms of overall survival (OS) and progression-free survival (PFS), regardless of the presence of liver/bone metastasis. Pretreatment AAPR was found to be a favorable predictor of OS and PFS based on a multivariate cox regression model. AAPR-M system, constructed based on AAPR and number of metastatic sites, showed superior predictive ability relative to the number of metastatic sites for predicting survival.

Research conclusions

Patients with high levels of pretreatment AAPR showed better survival compared with those with low levels.

Research perspectives

Prospective studies are needed to verify the prognostic efficacy of AAPR.

FOOTNOTES

Author contributions: Liu JL, Tian J, Zhang T, and Li YT contributed to the study conception and design and data analysis; Zhou XS and Han XM collected the data; Li YT drafted the first version of the manuscript; Qin Y and Liu JL verified the data and edited the manuscript; The revision of the manuscript was performed by Zhang T and Tian J; The final version submitted for publication was critically reviewed and approved by all the authors.

Institutional review board statement: The study was approved by the Institutional Ethical Board of Wuhan Union Hospital of Tongji Medical College, Huazhong University of Science and Technology.

Informed consent statement: A waiver of informed consent was obtained for the study because this was a retrospective study, and anonymous analyses were employed in place to protect patient confidentiality, meaning there was minimal risk to the patients.

Conflict-of-interest statement: The authors declare that they have no conflict of interest.

Data sharing statement: The datasets generated during and/or analyzed during the current study are available from the corresponding author on reasonable request.

Open-Access: This article is an open-access article that was selected by an in-house editor and fully peer-reviewed by external reviewers. It is distributed in accordance with the Creative Commons Attribution NonCommercial (CC BY-NC 4.0) license, which permits others to distribute, remix, adapt, build upon this work non-commercially, and license their derivative works on different terms, provided the original work is properly cited and the use is non-

commercial. See: <https://creativecommons.org/licenses/by-nc/4.0/>

Country/Territory of origin: China

ORCID number: Jun-Li Liu 0000-0001-9082-692X.

S-Editor: Wu YXJ

L-Editor: A

P-Editor: Wu YXJ

REFERENCES

- 1 **Stock M**, Otto F. Gene deregulation in gastric cancer. *Gene* 2005; **360**: 1-19 [PMID: 16154715 DOI: 10.1016/j.gene.2005.06.026]
- 2 **Bray F**, Ferlay J, Soerjomataram I, Siegel RL, Torre LA, Jemal A. Global cancer statistics 2018: GLOBOCAN estimates of incidence and mortality worldwide for 36 cancers in 185 countries. *CA Cancer J Clin* 2018; **68**: 394-424 [PMID: 30207593 DOI: 10.3322/caac.21492]
- 3 **Jim MA**, Pinheiro PS, Carreira H, Espey DK, Wiggins CL, Weir HK. Stomach cancer survival in the United States by race and stage (2001-2009): Findings from the CONCORD-2 study. *Cancer* 2017; **123** Suppl 24: 4994-5013 [PMID: 29205310 DOI: 10.1002/cncr.30881]
- 4 **Koizumi W**, Narahara H, Hara T, Takagane A, Akiya T, Takagi M, Miyashita K, Nishizaki T, Kobayashi O, Takiyama W, Toh Y, Nagaie T, Takagi S, Yamamura Y, Yanaoka K, Orita H, Takeuchi M. S-1 plus cisplatin vs S-1 alone for first-line treatment of advanced gastric cancer (SPIRITS trial): a phase III trial. *Lancet Oncol* 2008; **9**: 215-221 [PMID: 18282805 DOI: 10.1016/S1470-2045(08)70035-4]
- 5 **Lordick F**, Luber B, Lorenzen S, Hegewisch-Becker S, Folprecht G, Wöll E, Decker T, Endlicher E, Röthling N, Schuster T, Keller G, Fend F, Peschel C. Cetuximab plus oxaliplatin/Leucovorin/5-fluorouracil in first-line metastatic gastric cancer: a phase II study of the Arbeitsgemeinschaft Internistische Onkologie (AIO). *Br J Cancer* 2010; **102**: 500-505 [PMID: 20068568 DOI: 10.1038/sj.bjc.6605521]
- 6 **Takahashi N**, Iwasa S, Sasaki Y, Shoji H, Honma Y, Takashima A, Okita NT, Kato K, Hamaguchi T, Yamada Y. Serum levels of soluble programmed cell death ligand 1 as a prognostic factor on the first-line treatment of metastatic or recurrent gastric cancer. *J Cancer Res Clin Oncol* 2016; **142**: 1727-1738 [PMID: 27256004 DOI: 10.1007/s00432-016-2184-6]
- 7 **Wang J**, Qu J, Li Z, Che X, Liu J, Teng Y, Jin B, Zhao M, Liu Y, Qu X. Pretreatment platelet-to-lymphocyte ratio is associated with the response to first-line chemotherapy and survival in patients with metastatic gastric cancer. *J Clin Lab Anal* 2018; **32** [PMID: 28238215 DOI: 10.1002/jcla.22185]
- 8 **Zhang Y**, Lu JJ, Du YP, Feng CX, Wang LQ, Chen MB. Prognostic value of neutrophil-to-lymphocyte ratio and platelet-to-lymphocyte ratio in gastric cancer. *Medicine (Baltimore)* 2018; **97**: e0144 [PMID: 29561419 DOI: 10.1097/MD.00000000000010144]
- 9 **Tamura T**, Inagawa S, Hisakura K, Enomoto T, Ohkohchi N. Evaluation of serum high-density lipoprotein cholesterol levels as a prognostic factor in gastric cancer patients. *J Gastroenterol Hepatol* 2012; **27**: 1635-1640 [PMID: 22647147 DOI: 10.1111/j.1440-1746.2012.07189.x]
- 10 **Sisik A**, Kaya M, Bas G, Basak F, Alimoglu O. CEA and CA 19-9 are still valuable markers for the prognosis of colorectal and gastric cancer patients. *Asian Pac J Cancer Prev* 2013; **14**: 4289-4294 [PMID: 23991991 DOI: 10.7314/apjcp.2013.14.7.4289]
- 11 **Li Q**, Lyu Z, Wang L, Li F, Yang Z, Ren W. Albumin-to-Alkaline Phosphatase Ratio Associates with Good Prognosis of Hepatitis B Virus-Positive HCC Patients. *Onco Targets Ther* 2020; **13**: 2377-2384 [PMID: 32256088 DOI: 10.2147/OTT.S242034]
- 12 **Zhang F**, Lu S, Tian M, Hu K, Chen R, Zhang B, Ren Z, Shi Y, Yin X. Albumin-to-Alkaline Phosphatase Ratio is an Independent Prognostic Indicator in Combined Hepatocellular and Cholangiocarcinoma. *J Cancer* 2020; **11**: 5177-5186 [PMID: 32742464 DOI: 10.7150/jca.45633]
- 13 **Li D**, Yu H, Li W. Albumin-to-alkaline phosphatase ratio at diagnosis predicts survival in patients with metastatic non-small-cell lung cancer. *Onco Targets Ther* 2019; **12**: 5241-5249 [PMID: 31303770 DOI: 10.2147/OTT.S203321]
- 14 **Zhou S**, Jiang W, Wang H, Wei N, Yu Q. Predictive value of pretreatment albumin-to-alkaline phosphatase ratio for overall survival for patients with advanced non-small cell lung cancer. *Cancer Med* 2020; **9**: 6268-6280 [PMID: 32691996 DOI: 10.1002/cam4.3244]
- 15 **Li X**, Li B, Zeng H, Wang S, Sun X, Yu Y, Wang L, Yu J. Prognostic value of dynamic albumin-to-alkaline phosphatase ratio in limited stage small-cell lung cancer. *Future Oncol* 2019; **15**: 995-1006 [PMID: 30644319 DOI: 10.2217/ton-2018-0818]
- 16 **Kim JS**, Keam B, Heo DS, Han DH, Rhee CS, Kim JH, Jung KC, Wu HG. The Prognostic Value of Albumin-to-Alkaline Phosphatase Ratio before Radical Radiotherapy in Patients with Non-metastatic Nasopharyngeal Carcinoma: A Propensity Score Matching Analysis. *Cancer Res Treat* 2019; **51**: 1313-1323 [PMID: 30699498 DOI: 10.4143/crt.2018.503]
- 17 **Zhang K**, Dong S, Jing YH, Gao HF, Chen LY, Hua YQ, Chen H, Chen Z. Albumin-to-alkaline phosphatase ratio serves as a prognostic indicator in unresectable pancreatic ductal adenocarcinoma: a propensity score matching analysis. *BMC Cancer* 2020; **20**: 541 [PMID: 32517802 DOI: 10.1186/s12885-020-07023-9]
- 18 **Wang Y**, Xiong F, Yang J, Xia T, Jia Z, Shen J, Xu C, Feng J, Lu Y. Decreased albumin-to-alkaline phosphatase ratio predicted poor survival of resectable gastric cancer patients. *J Gastrointest Oncol* 2021; **12**: 1338-1350 [PMID: 34532092 DOI: 10.21037/jgo-21-430]

- 19 **Dixon M**, Mahar AL, Helyer LK, Vasilevska-Ristovska J, Law C, Coburn NG. Prognostic factors in metastatic gastric cancer: results of a population-based, retrospective cohort study in Ontario. *Gastric Cancer* 2016; **19**: 150-159 [PMID: 25421300 DOI: 10.1007/s10120-014-0442-3]
- 20 **Esper DH**, Harb WA. The cancer cachexia syndrome: a review of metabolic and clinical manifestations. *Nutr Clin Pract* 2005; **20**: 369-376 [PMID: 16207677 DOI: 10.1177/0115426505020004369]
- 21 **Heys SD**, Walker LG, Deehan DJ, Eremin OE. Serum albumin: a prognostic indicator in patients with colorectal cancer. *J R Coll Surg Edinb* 1998; **43**: 163-168 [PMID: 9654876]
- 22 **Schwartzbaum JA**, Lal P, Evanoff W, Mamrak S, Yates A, Barnett GH, Goodman J, Fisher JL. Presurgical serum albumin levels predict survival time from glioblastoma multiforme. *J Neurooncol* 1999; **43**: 35-41 [PMID: 10448869 DOI: 10.1023/a:1006269413998]
- 23 **Liu BZ**, Tao L, Chen YZ, Li XZ, Dong YL, Ma YJ, Li SG, Li F, Zhang WJ. Preoperative Body Mass Index, Blood Albumin and Triglycerides Predict Survival for Patients with Gastric Cancer. *PLoS One* 2016; **11**: e0157401 [PMID: 27309531 DOI: 10.1371/journal.pone.0157401]
- 24 **Schoppet M**, Shanahan CM. Role for alkaline phosphatase as an inducer of vascular calcification in renal failure? *Kidney Int* 2008; **73**: 989-991 [PMID: 18414436 DOI: 10.1038/ki.2008.104]
- 25 **Han KS**, Hong SJ. Serum alkaline phosphatase differentiates prostate-specific antigen flare from early disease progression after docetaxel chemotherapy in castration-resistant prostate cancer with bone metastasis. *J Cancer Res Clin Oncol* 2014; **140**: 1769-1776 [PMID: 24858569 DOI: 10.1007/s00432-014-1710-7]
- 26 **Kim JM**, Kwon CH, Joh JW, Park JB, Ko JS, Lee JH, Kim SJ, Park CK. The effect of alkaline phosphatase and intrahepatic metastases in large hepatocellular carcinoma. *World J Surg Oncol* 2013; **11**: 40 [PMID: 23432910 DOI: 10.1186/1477-7819-11-40]
- 27 **Zhang L**, Gong Z. Clinical Characteristics and Prognostic Factors in Bone Metastases from Lung Cancer. *Med Sci Monit* 2017; **23**: 4087-4094 [PMID: 28835603 DOI: 10.12659/msm.902971]
- 28 **Chen B**, Dai D, Tang H, Chen X, Ai X, Huang X, Wei W, Xie X. Pre-treatment serum alkaline phosphatase and lactate dehydrogenase as prognostic factors in triple negative breast cancer. *J Cancer* 2016; **7**: 2309-2316 [PMID: 27994669 DOI: 10.7150/jca.16622]
- 29 **Li G**, Gao J, Tao YL, Xu BQ, Tu ZW, Liu ZG, Zeng MS, Xia YF. Increased pretreatment levels of serum LDH and ALP as poor prognostic factors for nasopharyngeal carcinoma. *Chin J Cancer* 2012; **31**: 197-206 [PMID: 22237040 DOI: 10.5732/cjc.011.10283]
- 30 **Li D**, Lv H, Hao X, Hu B, Song Y. Prognostic value of serum alkaline phosphatase in the survival of prostate cancer: evidence from a meta-analysis. *Cancer Manag Res* 2018; **10**: 3125-3139 [PMID: 30214305 DOI: 10.2147/CMAR.S174237]
- 31 **Namikawa T**, Ishida N, Tsuda S, Fujisawa K, Munekage E, Iwabu J, Munekage M, Uemura S, Tsujii S, Tamura T, Yatabe T, Maeda H, Kitagawa H, Kobayashi M, Hanazaki K. Prognostic significance of serum alkaline phosphatase and lactate dehydrogenase levels in patients with unresectable advanced gastric cancer. *Gastric Cancer* 2019; **22**: 684-691 [PMID: 30417313 DOI: 10.1007/s10120-018-0897-8]
- 32 **Chan AW**, Chan SL, Mo FK, Wong GL, Wong VW, Cheung YS, Chan HL, Yeo W, Lai PB, To KF. Albumin-to-alkaline phosphatase ratio: a novel prognostic index for hepatocellular carcinoma. *Dis Markers* 2015; **2015**: 564057 [PMID: 25737613 DOI: 10.1155/2015/564057]
- 33 **Guo X**, Zou Q, Yan J, Zhen X, Gu H. Prognostic effect of pretreatment albumin-to-alkaline phosphatase ratio in human cancers: A meta-analysis. *PLoS One* 2020; **15**: e0237793 [PMID: 32822383 DOI: 10.1371/journal.pone.0237793]
- 34 **Tian G**, Li G, Guan L, Yang Y, Li N. Pretreatment albumin-to-alkaline phosphatase ratio as a prognostic indicator in solid cancers: A meta-analysis with trial sequential analysis. *Int J Surg* 2020; **81**: 66-73 [PMID: 32745716 DOI: 10.1016/j.ijssu.2020.07.024]
- 35 **Xie H**, Wei L, Tang S, Gan J. Prognostic Value of Pretreatment Albumin-to-Alkaline Phosphatase Ratio in Cancer: A Meta-Analysis. *Biomed Res Int* 2020; **2020**: 6661097 [PMID: 33376729 DOI: 10.1155/2020/6661097]



Published by **Baishideng Publishing Group Inc**
7041 Koll Center Parkway, Suite 160, Pleasanton, CA 94566, USA

Telephone: +1-925-3991568

E-mail: bpgoffice@wjgnet.com

Help Desk: <https://www.f6publishing.com/helpdesk>

<https://www.wjgnet.com>

