

World Journal of *Gastrointestinal Oncology*

World J Gastrointest Oncol 2023 May 15; 15(5): 700-910



OPINION REVIEW

- 700 Restaging rectal cancer following neoadjuvant chemoradiotherapy
Cuicchi D, Castagna G, Cardelli S, Larotonda C, Petrello B, Poggioli G

REVIEW

- 713 Intratumour microbiome of pancreatic cancer
Guan SW, Lin Q, Yu HB
- 731 Exosomes in metastasis of colorectal cancers: Friends or foes?
Wu Z, Fang ZX, Hou YY, Wu BX, Deng Y, Wu HT, Liu J
- 757 Immuno-oncology-microbiome axis of gastrointestinal malignancy
Lin Q, Guan SW, Yu HB

MINIREVIEWS

- 776 Microbiota regulation in constipation and colorectal cancer
Wang LW, Ruan H, Wang BM, Qin Y, Zhong WL

ORIGINAL ARTICLE

Basic Study

- 787 Circ_0003356 suppresses gastric cancer growth through targeting the miR-668-3p/SOCS3 axis
Li WD, Wang HT, Huang YM, Cheng BH, Xiang LJ, Zhou XH, Deng QY, Guo ZG, Yang ZF, Guan ZF, Wang Y
- 810 BZD9L1 benzimidazole analogue hampers colorectal tumor progression by impeding angiogenesis
Oon CE, Subramaniam AV, Ooi LY, Yehya AHS, Lee YT, Kaur G, Sasidharan S, Qiu B, Wang X

Retrospective Cohort Study

- 828 LipoCol Forte capsules reduce the risk of liver cancer: A propensity score-matched, nationwide, population-based cohort study
Lai HC, Lin HJ, Shih YH, Chou JW, Lin KW, Jeng LB, Huang ST

Retrospective Study

- 843 Epidemiology and outcome of individuals with intraductal papillary neoplasms of the bile duct
Wu RS, Liao WJ, Ma JS, Wang JK, Wu LQ, Hou P
- 859 Real-world 10-year retrospective study of the guidelines for diagnosis and treatment of primary liver cancer in China
Yan YW, Liu XK, Zhang SX, Tian QF

Randomized Controlled Trial

- 878** Efficacy of image-enhanced endoscopy for colorectal adenoma detection: A multicenter, randomized trial
Qi ZP, Xu EP, He DL, Wang Y, Chen BS, Dong XS, Shi Q, Cai SL, Guo Q, Li N, Li X, Huang HY, Li B, Sun D, Xu JG, Chen ZH, Yalikong A, Liu JY, Lv ZT, Xu JM, Zhou PH, Zhong YS

CASE REPORT

- 892** Acute respiratory distress syndrome and severe pneumonitis after atezolizumab plus bevacizumab for hepatocellular carcinoma treatment: A case report
Cho SH, You GR, Park C, Cho SG, Lee JE, Choi SK, Cho SB, Yoon JH
- 902** Oral fruquintinib combined with tegafur-gimeracil-oteracil potassium for advanced colorectal cancer to obtain longer progression-free survival: A case report
Qu FJ, Wu S, Kong Y

ABOUT COVER

Editorial Board Member of *World Journal of Gastrointestinal Oncology*, Claudio Luchini, MD, PhD, Associate Professor of Pathology, Department of Diagnostics and Public Health, University and Hospital Trust of Verona, Verona 37134, Italy. claudio.luchini@univr.it

AIMS AND SCOPE

The primary aim of *World Journal of Gastrointestinal Oncology* (WJGO, *World J Gastrointest Oncol*) is to provide scholars and readers from various fields of gastrointestinal oncology with a platform to publish high-quality basic and clinical research articles and communicate their research findings online.

WJGO mainly publishes articles reporting research results and findings obtained in the field of gastrointestinal oncology and covering a wide range of topics including liver cell adenoma, gastric neoplasms, appendiceal neoplasms, biliary tract neoplasms, hepatocellular carcinoma, pancreatic carcinoma, cecal neoplasms, colonic neoplasms, colorectal neoplasms, duodenal neoplasms, esophageal neoplasms, gallbladder neoplasms, *etc.*

INDEXING/ABSTRACTING

The WJGO is now abstracted and indexed in PubMed, PubMed Central, Science Citation Index Expanded (SCIE, also known as SciSearch®), Journal Citation Reports/Science Edition, Scopus, Reference Citation Analysis, China National Knowledge Infrastructure, China Science and Technology Journal Database, and Superstar Journals Database. The 2022 edition of Journal Citation Reports® cites the 2021 impact factor (IF) for WJGO as 3.404; IF without journal self cites: 3.357; 5-year IF: 3.250; Journal Citation Indicator: 0.53; Ranking: 162 among 245 journals in oncology; Quartile category: Q3; Ranking: 59 among 93 journals in gastroenterology and hepatology; and Quartile category: Q3. The WJGO's CiteScore for 2021 is 3.6 and Scopus CiteScore rank 2021: Gastroenterology is 72/149; Oncology is 203/360.

RESPONSIBLE EDITORS FOR THIS ISSUE

Production Editor: Xiang-Di Zhang; **Production Department Director:** Xiang Li; **Editorial Office Director:** Jia-Ru Fan.

NAME OF JOURNAL

World Journal of Gastrointestinal Oncology

ISSN

ISSN 1948-5204 (online)

LAUNCH DATE

February 15, 2009

FREQUENCY

Monthly

EDITORS-IN-CHIEF

Monjur Ahmed, Florin Burada

EDITORIAL BOARD MEMBERS

<https://www.wjgnet.com/1948-5204/editorialboard.htm>

PUBLICATION DATE

May 15, 2023

COPYRIGHT

© 2023 Baishideng Publishing Group Inc

INSTRUCTIONS TO AUTHORS

<https://www.wjgnet.com/bpg/gerinfo/204>

GUIDELINES FOR ETHICS DOCUMENTS

<https://www.wjgnet.com/bpg/GerInfo/287>

GUIDELINES FOR NON-NATIVE SPEAKERS OF ENGLISH

<https://www.wjgnet.com/bpg/gerinfo/240>

PUBLICATION ETHICS

<https://www.wjgnet.com/bpg/GerInfo/288>

PUBLICATION MISCONDUCT

<https://www.wjgnet.com/bpg/gerinfo/208>

ARTICLE PROCESSING CHARGE

<https://www.wjgnet.com/bpg/gerinfo/242>

STEPS FOR SUBMITTING MANUSCRIPTS

<https://www.wjgnet.com/bpg/GerInfo/239>

ONLINE SUBMISSION

<https://www.f6publishing.com>



Retrospective Study

Epidemiology and outcome of individuals with intraductal papillary neoplasms of the bile duct

Rong-Shou Wu, Wen-Jun Liao, Jing-Sheng Ma, Jia-Kun Wang, Lin-Quan Wu, Ping Hou

Specialty type: Gastroenterology and hepatology

Provenance and peer review:

Unsolicited article; Externally peer reviewed.

Peer-review model: Single blind

Peer-review report's scientific quality classification

Grade A (Excellent): A, A

Grade B (Very good): 0

Grade C (Good): C

Grade D (Fair): D

Grade E (Poor): 0

P-Reviewer: Kitamura K, Japan; Šarenac TM, Serbia; Tuysuz U, Turkey; Zamani M, Iran

Received: November 5, 2022

Peer-review started: November 5, 2022

First decision: February 2, 2023

Revised: February 16, 2023

Accepted: March 15, 2023

Article in press: March 15, 2023

Published online: May 15, 2023



Rong-Shou Wu, Wen-Jun Liao, Jia-Kun Wang, Lin-Quan Wu, Ping Hou, Department of Hepatobiliary and Pancreatic Surgery, The Second Affiliated Hospital of Nanchang University, Nanchang 330000, Jiangxi Province, China

Jing-Sheng Ma, Department of Organ Transplantation, The Second Affiliated Hospital of Nanchang University, Nanchang 330000, Jiangxi Province, China

Ping Hou, Department of General Surgery, The First Affiliated Hospital of Gannan Medical College, No. 23 Qingnian Road, Zhanggong District, Ganzhou 341000, Jiangxi Province, China

Corresponding author: Ping Hou, PhD, Surgeon, Surgical Oncologist, Department of General Surgery Department, The First Affiliated Hospital of Gannan Medical College, No. 23 Qingnian Road, Zhanggong District, Ganzhou 341000, Jiangxi Province, China.

houping1986@126.com

Abstract

BACKGROUND

Intraductal papillary neoplasm of the bile duct (IPNB) is a rare distinct subtype of precursor lesions of biliary carcinoma. IPNB is considered to originate from luminal biliary epithelial cells, typically displays mucin-hypersecretion or a papillary growth pattern, and results in cystic dilatation[1]. IPNB develops anywhere in the intrahepatic and extrahepatic biliary tracts, and can occur in various pathological stages from low-grade dysplasia to invasive carcinoma. IPNBs have similar phenotypic changes in the occurrence and development of all subtypes, and the prognosis is significantly better than that of traditional (non-papillary) cholangiocarcinoma.

AIM

To evaluate the clinicopathological features of IPNB to provide evidence-based guidance for treatment.

METHODS

Invasive IPNB, invasive intraductal papillary mucinous neoplasm of the pancreas (IPMN), and traditional cholangiocarcinoma data for affected individuals from 1975 to 2016 were obtained from the Surveillance, Epidemiology, and End Results (SEER) database. Annual percentage changes (APCs) in the incidence and incidence-based (IB) mortality were calculated. We identified the independent predictors of overall survival (OS) and cancer-specific survival (CSS) in indi-

duals with invasive IPNB.

RESULTS

The incidence and IB mortality of invasive IPNB showed sustained decreases, with an APC of -4.5% (95%CI: -5.1% to -3.8%) and -3.3% (95%CI: -4.1% to -2.6%) ($P < 0.001$), respectively. Similar decreases in incidence and IB mortality were seen for invasive IPMN but not for traditional cholangiocarcinoma. Both OS and CSS for invasive IPNB were better than for invasive IPMN and traditional cholangiocarcinoma. A total of 1635 individuals with invasive IPNB were included in our prognosis analysis. The most common tumor sites were the pancreaticobiliary ampulla (47.9%) and perihilar tract (36.7%), but the mucin-related subtype of invasive IPNB was the main type, intrahepatically (approximately 90%). In the univariate and multivariate Cox regression analysis, age, tumor site, grade and stage, subtype, surgery, and chemotherapy were associated with OS and CSS ($P < 0.05$).

CONCLUSION

Incidence and IB mortality of invasive IPNB trended steadily downward. The heterogeneity of IPNB comprises site and the tumor's mucin-producing status.

Key Words: Surveillance, Epidemiology, and End Results database; Intraductal papillary neoplasms of the bile duct; Subtype; Annual percentage changes; Prognosis

©The Author(s) 2023. Published by Baishideng Publishing Group Inc. All rights reserved.

Core Tip: Intraductal papillary neoplasms of the bile duct (IPNB) is a rare subtype of biliary cholangiocarcinoma, and also considered as a counterpart of intraductal papillary mucinous neoplasm of the pancreas (IPMN). Current management decisions are based on anecdotal evidence and small case series. There have been no large-sample multicenter studies of IPNB. This manuscript aimed to evaluate the clinicopathological features of IPNB to provide evidence-based guidance for treatment.

Citation: Wu RS, Liao WJ, Ma JS, Wang JK, Wu LQ, Hou P. Epidemiology and outcome of individuals with intraductal papillary neoplasms of the bile duct. *World J Gastrointest Oncol* 2023; 15(5): 843-858

URL: <https://www.wjgnet.com/1948-5204/full/v15/i5/843.htm>

DOI: <https://dx.doi.org/10.4251/wjgo.v15.i5.843>

INTRODUCTION

Intraductal papillary neoplasm of the bile duct (IPNB) is a rare distinct subtype of precursor lesions of biliary carcinoma. IPNB is considered to originate from luminal biliary epithelial cells, typically displays mucin-hypersecretion or a papillary growth pattern, and results in cystic dilatation[1]. IPNB develops anywhere in the intrahepatic and extrahepatic biliary tracts, and can occur in various pathological stages from low-grade dysplasia to invasive carcinoma. IPNBs have similar phenotypic changes in the occurrence and development of all subtypes, and the prognosis is significantly better than that of traditional (non-papillary) cholangiocarcinoma[2]. Based on these characteristics, IPNBs have been called mucinous cholangiocarcinoma, biliary papillomatosis, biliary intraductal papillary neoplasm, mucin-hypersecreting intrahepatic biliary neoplasm, and intraductal papillary neoplasm of the liver[3, 4].

According to the 2010 World Health Organization (WHO) classification of tumors in the digestive system, IPNB is defined as the biliary counterpart of intraductal papillary mucinous neoplasm of the pancreas (IPMN) and has identical histopathologic pancreaticobiliary, gastric, intestinal, and oncocytic features[5,6]. Because of the anatomical proximity of the pancreas and the bile duct, the simultaneous development of the foregut endoderm, the peribiliary gland containing multipotent stem cells in biliary tract can differentiate into cholangiocytes as well as hepatocytes or pancreatocytes[7]. However, several important differences between IPMN and IPNB exist, such as the incidence and prognosis of invasive cancer, frequency of each tumor subtype, frequency of mucin production, and the presence of known high risk factors, such as choledocholithiasis and parasitic infection, and gene mutation, such as CTNNB1, TP53, SMAD4 and PIK3CA[8-10]. Compared with traditional cholangiocarcinoma, IPNB has also been described anecdotally as a tumor type with limited invasive potential, typically involving only cellular atypia and at most, carcinoma in situ[5].

Unlike invasive IPMN and traditional cholangiocarcinoma in the biliary tract, very little is known about the clinicopathological features and prognostic variables of invasive IPNB. Previous studies were based solely on single-center case series, for example, Wu *et al* [11] reported that IPNB occurred mainly in patients of advanced age. In addition, a multicenter study indicated that IPNB shown a better long-term prognosis than traditional cholangiocarcinoma, and were relatively invasive features in extrahepatic lesions [12]. Therefore, the epidemiology, tumor characteristics, treatment strategy, and long-term results of invasive IPNB are limited because of the relatively low case numbers. We conducted a Surveillance, Epidemiology, and End Results (SEER) database evaluation of invasive IPNB to address these shortcomings, and to further elucidate the epidemiological and clinical trends to guide treatment decision-making and to identify further clinical and scientific research areas.

MATERIALS AND METHODS

Data source

The SEER database is an authoritative source of information about cancer incidence and survival rates in the United States. SEER currently collects and publishes data on cancer incidence and survival from population-based cancer registries covering approximately 28% of the United States population, and the database is maintained by the National Cancer Institute (NCI). The SEER Program is the only comprehensive population-based source of information in the United States for cancer stage during diagnosis, incidence, and survival data. Mortality data reported by SEER are provided by the National Center for Health Statistics. Population data used to calculate cancer incidence have passed appropriate standards before abstraction.

Study population

This was a retrospective cohort study using data from SEER databases submitted up to November 2018. Data from 1975 to 2016 are available from 18 SEER registries (with additional and treatment fields): Alaska Natives, Atlanta, California (excluding San Francisco/San José Monterey/Los Angeles), Connecticut, Detroit (metropolitan), Greater Georgia, Hawaii, Iowa, Kentucky, Los Angeles, Louisiana, New Jersey, New Mexico, Rural Georgia, San Francisco-Oakland standard metropolitan statistical area, San José Monterey, Seattle, and Utah. The data are adjusted for areas affected by hurricanes Katrina and Rita.

The database was queried by selecting biliary tract [including other biliary (C240–C249), intrahepatic bile duct (C221), and liver (C220) and pancreas (C250–C259)] as the disease sites [sites recoded according to the international classification of disease (ICD) O–3/WHO 2008]] and using the following codes from the ICD for oncology (ICD-O) 3rd edition: 8050/3, 8260/3, 8450/3, 8453/3, 8471/3, 8480/3, 8481/3, and 8503/3 for invasive IPNB and invasive IPMN [13–16] and 8140/3 and 8160/3 for data on individuals with traditional adenocarcinoma and cholangiocarcinoma of the biliary tract, for comparison [17]. We included 34972 patients with pathological evidence of traditional adenocarcinoma or cholangiocarcinoma of the biliary tract and 9527 patients with invasive IPMN. Invasive IPNBs were categorized as the mucinous subtype of invasive IPNBs (ICD-O-3rd: 8453/3, 8471/3, 8480/3, 8481/3) and the non-mucinous subtype of invasive IPNBs (ICD-O-3rd: 8050/3 8260/3 8450/3, 8503/3). All individuals in our study cohort had pathologically-confirmed diagnoses. In addition, because the smallest unit of survival was months rather than days, the data for individuals who died within 1 mo after diagnosis were excluded to avoid analyzing the situation where the survival time was zero. If individuals did not have complete demographic or clinical pathology and follow-up information, they were excluded (Figure 1).

We recorded the following demographic and clinicopathological variables: sex, age at diagnosis, year of diagnosis, race, detailed tumor site according to the tumor, node and metastasis (TNM) 7 and cancer staging schema, version 0204, histological subtype, SEER historic stage, grade, surgery, radiotherapy, chemotherapy, survival (in months), vital status recode, and cause-specific death. The SEER stage classification provides consistent time rather than the American Joint Committee on Cancer stage classification, which may have changed during the study period. Field descriptions of the TNM7/CSv0204 + schema information was collected under the specifications of a particular schema according to site and histology, such as site recode: 003 am pull avatar bile (defined pancreaticobiliary ampulla); 006 bile ducts distal; 007 bile ducts intrahepatic; 008 bile ducts perihilar; 009 biliary other; and 062 liver. The SEER historic stages are divided into four stages: localized stage (confined to the primary site), regional stage (spread to regional lymph nodes), distant stage (cancer had metastasized), and unstaged or unknown. The types of surgical treatment include defined radical surgery, non-defined radical surgery, and palliative surgery. The defined radical surgery includes: radical surgery (partial/total removal of primary site plus partial or total removal of other organs); radical surgery; partial/simple removal of primary site with dissection of lymph nodes; wedge resection, nitric oxide synthase (NOS) segmental resection, lobectomy; extended lobectomy: resection of a single lobe plus a segment of another lobe. The undefined radical surgery includes surgery, NOS; partial/simple removal of primary site without dissection of lymph nodes; surgery of regional and/or distant site(s)/node(s) only. Palliative surgery included: excisional biopsy; polypectomy; excision of lesion and photodynamic therapy. The primary

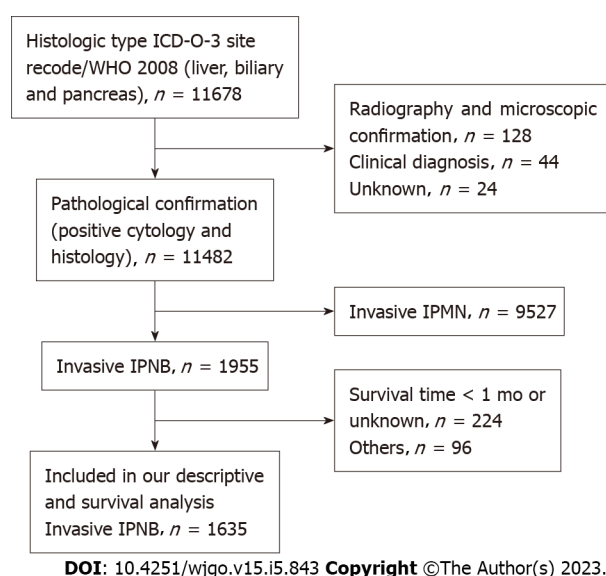


Figure 1 Flow diagram of individual selection from the 11678 individuals identified to have invasive intraductal papillary neoplasm of the bile duct within the Surveillance, Epidemiology, and End Results database from 1975-2016 to identify those who were included in our descriptive (excluding incidence trends) and survival analyses. IPNB: Intraductal papillary neoplasm of the bile duct.

outcomes of our cohort study were the overall survival (OS) rate and the cancer-specific survival (CSS) rate. OS was calculated as the time from diagnosis to death (from any cause), and CSS was calculated as the time from diagnosis to death (attributable to the cancer).

Statistical analyses

The incidence rates of invasive IPNB, invasive IPMN, and cholangiocarcinoma were calculated per 1000000 persons, and results were age-adjusted to the 2000 United States standard population using SEER*Stat (version 8.3.8). Annual percentage changes (APCs) of incidence and incidence-based (IB) mortality were calculated using the NCI joinpoint regression analysis program (version 4.8.0.1). APC is a method of describing incidence or mortality trends over time by showing slope gradients or directions for each straight segment. Therefore, tumor incidence or mortality rate is considered to change by a constant percentage from the previous year. We used linear-by-linear association tests to evaluate the trends in the ordinal data, which provides a meaningful measure of ordinal variables; the SEER*Stat software calculates 95% CIs. The Kaplan-Meier method and the log-rank test were used to calculate the cumulative survival rate and survival curves. We used a Cox proportional hazard regression model in the multivariable analysis using IBM SPSS Statistics software (version 26; IBM Corp., Armonk, NY). The multi-variables analysed included patient age, site, tumour grade, stage, mucin classification and treatment. *P* values were two-sided, and *P* values < 0.05 were considered statistically significant.

RESULTS

Characteristics of the included individuals and the tumors

A total of 11678 individuals were diagnosed with invasive IPNB and invasive IPMN in the pancreaticobiliary duct system from 1975 to 2016. Of these individuals, 1635 individuals met our study criteria (Figure 1). The percentages of the mucin-related subtype and non-mucin subtype of invasive IPNBs were 56.6% (*n* = 926) and 43.4% (*n* = 709), respectively. The mean age and standard deviation in the total cohort was 69 ± 12.2 years, and the median age of the overall cohort was 68 years (range: 27-97 years). Individuals aged ≥ 68 and < 68 years accounted for 51.3% and 48.7% of the individuals, respectively. The proportions of men and women in the total cohort were 54.8% (*n* = 896) and 45.2% (*n* = 739), respectively. The vast majority of invasive IPNB patients were white (*n* = 1278, 78.2%). The tumor sites differed significantly and were most commonly the pancreaticobiliary ampulla (*n* = 783, 47.9%) and the perihilar tract (*n* = 600, 36.7%), followed by the liver (*n* = 100, 6.1%), intrahepatic biliary tract (*n* = 99, 6.1%), and distal tract (*n* = 53, 3.2%). The mucin-related subtype of invasive IPNB was the main type in the intrahepatic biliary duct system. The percentages of the locations of the mucin-related subtype were both nearly 90% (liver: 90/100, intrahepatic bile duct: 87/99). Most individuals had SEER historic stage regional tumors (*n* = 814, 49.8%), followed by the localized stage (*n* = 401, 24.5%), distant stage (*n* = 317, 19.4%), and unstaged or unknown (*n* = 103, 6.3%). Tumors were categorized by pathological grade as follows: well-differentiated, grade I (*n* = 373, 22.8%); moderately-differentiated, grade II (*n* = 532, 32.5%);

poorly-differentiated, grade III ($n = 227$, 13.9%); and undifferentiated grade ($n = 22$, 1.3%) and unknown grade ($n = 481$, 29.4%). In the total cohort, 60.1% ($n = 982$) of individuals with invasive IPNB underwent surgery, and 35.4% ($n = 579$) received defined radical surgery, 22.9% ($n = 375$) received undefined radical surgery, 1.8% ($n = 28$) received palliative surgery, while only 17.5% ($n = 286$) received radiotherapy, and 28.0% ($n = 458$) received chemotherapy (Table 1). Approximately 11.5% ($n = 188$) of the individuals underwent combined radiotherapy, and chemotherapy, while 15.0% ($n = 245$) of the individuals underwent combined surgery and chemotherapy; 11.4% ($n = 187$) underwent combined surgery and radiotherapy. Only 8.1% ($n = 133$) of the individuals received triple therapy (chemotherapy, radiotherapy, and surgery).

Overall incidence and mortality trends

During the study period, the incidence of invasive IPNB decreased steadily (Figure 2A), as with invasive IPMN; however, the incidence of traditional cholangiocarcinoma increased steadily (Figure 2B and C). The incidence of invasive IPNB was 2.2 cases per 1000000 individuals in 1975 and 0.3 cases per 1000000 individuals in 2016. The APC over this period was -4.5% (95%CI: -5.1% to -3.8%; $P < 0.05$). While the slope of the decrease increased near 1999, the APC (*i.e.*, the extent of the decrease) for the incidence of invasive IPNB from 1999 to 2016 was -6.6% per year (95%CI: -8.8% to -4.4%; $P < 0.05$), whereas from 1975 to 1999, the change was -3.2% per year (Supplementary Figure 1A). Similarly, the incidence of invasive IPMN also showed a sustained decrease (Figure 2B). The incidence of invasive IPMN was 6.8 cases per 1000000 individuals in 1975 and 3.1 cases per 1000000 individuals in 2016. The APC of invasive IPMN over this period was -1.9% (95%CI: -2.3% to -1.5%; $P < 0.05$). Conversely, the incidence of traditional cholangiocarcinoma in the biliary tract increased steadily. The incidence of traditional cholangiocarcinoma was 11.4 cases per 1000000 individuals in 1975 and 28.3 cases per 1000000 individuals in 2016, and the APC was 2.18% (95%CI: 2.0%-2.3%; $P < 0.05$) (Figure 2C).

The IB mortality of invasive IPNB also showed a steady decrease over the study period (Figure 2D), with an APC of -3.3% (95%CI: -4.1% to -2.6%; $P < 0.05$), and a decrease from 2.1 cases per 1000000 individuals in 1975 to 0.5 cases per 1000000 individuals in 2016 (Figure 2D). While the slope of the decrease increased near 1999, the APC for the IB mortality of invasive IPNB from 1999 to 2016 was -5.7% per year (95%CI: -7.9% to -3.3%; $P < 0.05$), whereas from 1977 to 1999, the change was -2.5% per year (95%CI: -4.2% to -0.8%; $P < 0.05$) (Supplementary Figure 1B). The changes were similar for IPMN, which also showed decreased IB mortality over the study period, with an APC of -1.83% (95%CI: -2.2% to -0.8%; $P < 0.05$) (Figure 2E). Conversely, the IB mortality for traditional cholangiocarcinoma increased during the study period, from 6.6 cases per 1000000 individuals in 1975 to 24.9 cases per 1000000 individuals in 2016; the APC was 2.36% (95%CI: 2.1%-2.6%; $P < 0.05$) (Figure 2F).

Trends by sex

Regarding the incidence by sex, we found a steady decreasing trend in invasive IPNB incidence in males from 1975 to 2016; the APC was -4.8% (95%CI: -5.7 to -3.8; $P < 0.01$). The incidence in males was 3.6 per 1000000 individuals in 1975 and 0.5 per 1000000 individuals in 2016 (Supplementary Figure 2A). The incidence of invasive IPNB in females followed a similar pattern. The APC was -4.5% (95%CI: -5.4 to -3.7; $P < 0.01$), and 2.2 per 1000000 individuals in 1975 and 0.3 per 1000000 individuals in 2016 (Supplementary Figure 2B). In both males and females, the IB mortality rate of invasive IPNB also decreased during 1975-2016. The APCs were -3.39% (95%CI: -4.4 to -2.4; $P < 0.01$) and -3.43% (95%CI: -4.2 to -2.7; $P < 0.01$), respectively (Supplementary Figure 2C and D).

OS and CSS in invasive IPNB, invasive IPMN, and traditional cholangiocarcinoma

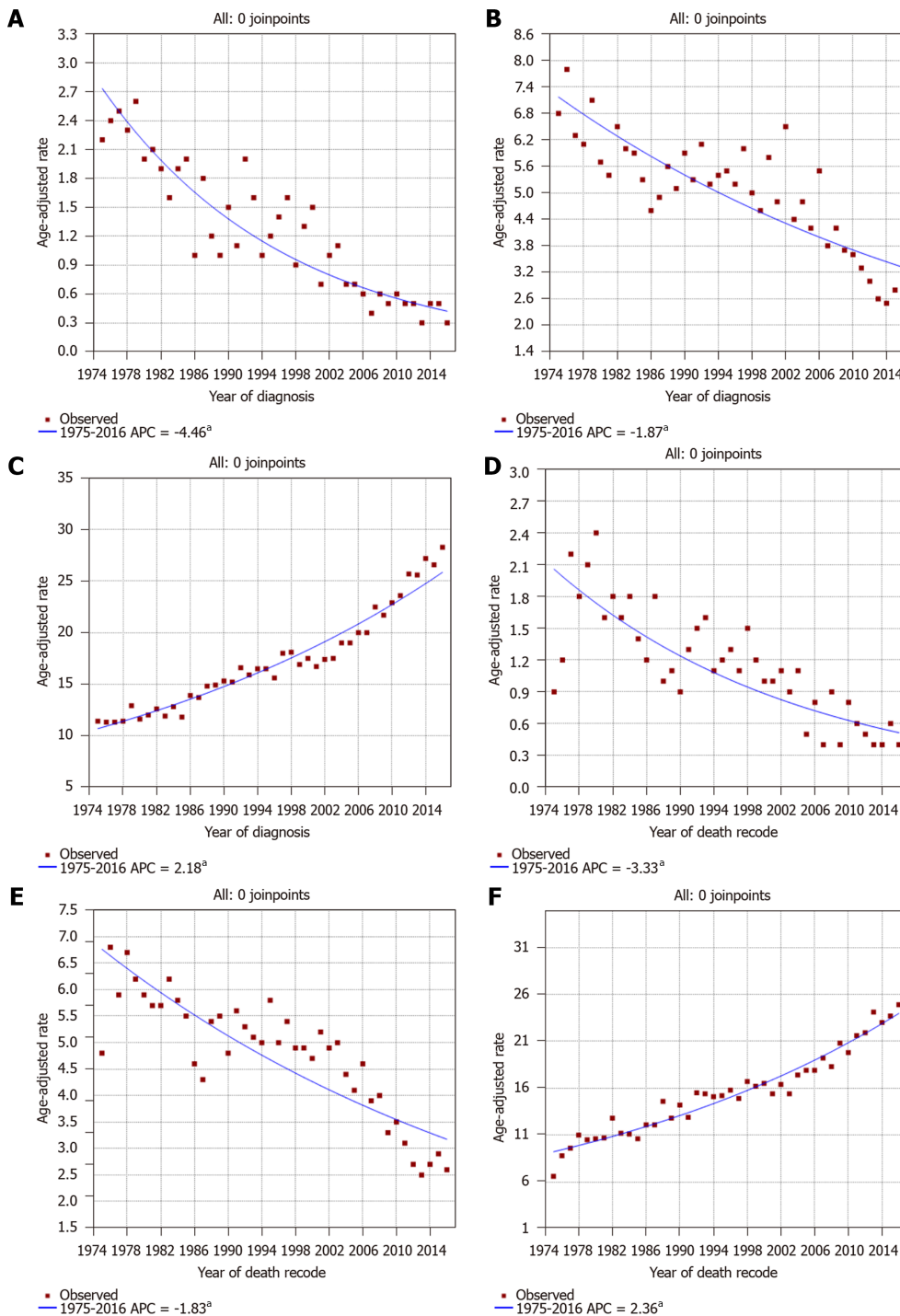
Both OS and CSS for invasive IPNB improved (Supplementary Figure 3A and B) during 1975-1985, 1986-1995, 1996-2005, and 2005-2016. The Kaplan-Meier OS and CSS analyses showed that invasive IPNB had better survival than invasive IPMN and traditional cholangiocarcinoma (Figure 3A and B; log-rank $P < 0.001$). The median OS and CSS of individuals with invasive IPNB in this cohort was 17 mo (95%CI: 15-18 mo) and 27 mo (95%CI: 24-29 mo), respectively, and the 1-, 3-, and 5-year OS and CSS rates were 58.2% and 68.6%, 31.5% and 43.5%, and 23.2% and 36.4%, respectively. However, the median OS and CSS of individuals with invasive IPMN was the worst at only 6 mo (95%CI: 5.8-6.2 mo) and 9 mo (95%CI: 8.6-9.4 mo), respectively, and the 1-, 3-, and 5-year OS and CSS rates were 30.3% and 39.5%, 11.5% and 18.8%, and 8.4% and 15%, respectively. The median OS and CSS of individuals with traditional cholangiocarcinoma was 10 mo (95%CI: 9.7-10.2 mo) and 15 mo (95%CI: 14.6-15 mo), respectively; and 1-, 3- and 5-year OS rates were 43.9% and 54.1%, 18.3% and 28.6%, and 12.4% and 22.2%, respectively.

The OS and CSS for invasive IPNB differed for different tumor locations and subtypes. Kaplan-Meier and long-rank analyses showed that the non-mucin subtype had better OS and CSS than for the mucin subtype, and invasive IPNB located in the distal tract and at the ampulla had the best prognosis (Figure 3C-F; log-rank $P < 0.001$). Interestingly, both the OS and CSS of the mucin and non-mucin subtypes of invasive IPMN were also statistically significant (Supplementary Figure 3C and D; log-rank $P < 0.001$). The median OS and CSS of individuals with the non-mucin subtype of invasive IPNB were 27 mo (95%CI: 24-30 mo) and 42 mo (95%CI: 32-52 mo), respectively, and the 1-, 3-, and 5-year OS and

Table 1 Demographics and clinicopathologic characteristics of patients with invasive intraductal papillary neoplasm of the bile duct, *n* (%)

Variable	Total (<i>n</i> = 1635)	Subtype 1 (mucin)	Subtype 2 (non-mucin)
Age at diagnosis, yr		<i>n</i> = 926	<i>n</i> = 709
< 68	796 (48.7)	464 (50.1)	332 (46.8)
≥ 68	839 (51.3)	462 (49.9)	377 (53.2)
Sex			
Male	896 (54.8)	504 (56.3)	392 (55.3)
Female	739 (45.2)	422 (45.6)	317 (44.7)
Race			
White	1278 (78.2)	741 (80.0)	537 (75.7)
Black	116 (7.1)	67 (7.2)	49 (7.1)
Others	241 (14.7)	118 (12.7)	123 (17.3)
THM 7/CSv0204+ schema			
Liver	100 (6.1)	90 (9.7)	10 (1.4)
Intrahepatic bile	99 (6.1)	87 (9.4)	12 (1.7)
Perihilar bile	600 (36.6)	304 (32.8)	296 (41.7)
Distal bile	53 (3.2)	27 (2.9)	26 (3.7)
Pancreaticobiliaryampulla	783 (47.9)	418 (45.1)	365 (51.5)
SEER historic stage			
Localized	401 (24.5)	130 (14)	271 (38.2)
Regional	814 (49.8)	482 (52.1)	332 (46.8)
Distant	317 (19.4)	259 (28)	58 (8.2)
Unstaged	103 (6.3)	55 (5.9)	48 (6.8)
Grade			
Well (I)	373 (22.8)	119 (12.9)	254 (35.8)
Moderately (II)	532 (32.5)	310 (33.5)	222 (31.3)
Poorly (III)	227 (13.8)	176 (19.0)	51 (7.2)
Undifferentiated (IV)	22 (1.3)	11 (1.2)	11 (1.6)
Unknown	481 (29.4)	310 (33.5)	171 (24.1)
Surgery			
Performed	982 (60.1)	483 (52.2)	489 (70.4)
Defined radical surgery	579 (35.4)	336 (36.3)	243 (35.0)
Undefined radical surgery	375 (22.9)	130 (14.1)	235 (33.4)
Palliative surgery	28 (1.8)	17 (1.8)	11 (2.0)
Non	653 (39.9)	443 (47.8)	210 (29.6)
Radiationtherapy			
Performed	286 (17.5)	173 (18.7)	113 (15.9)
Non	1349 (82.5)	753 (81.3)	596 (84.1)
Chemotherapy			
Performed	458 (28.0)	339 (36.6)	119 (16.8)
Non	1177 (72.0)	587 (63.4)	590 (83.2)

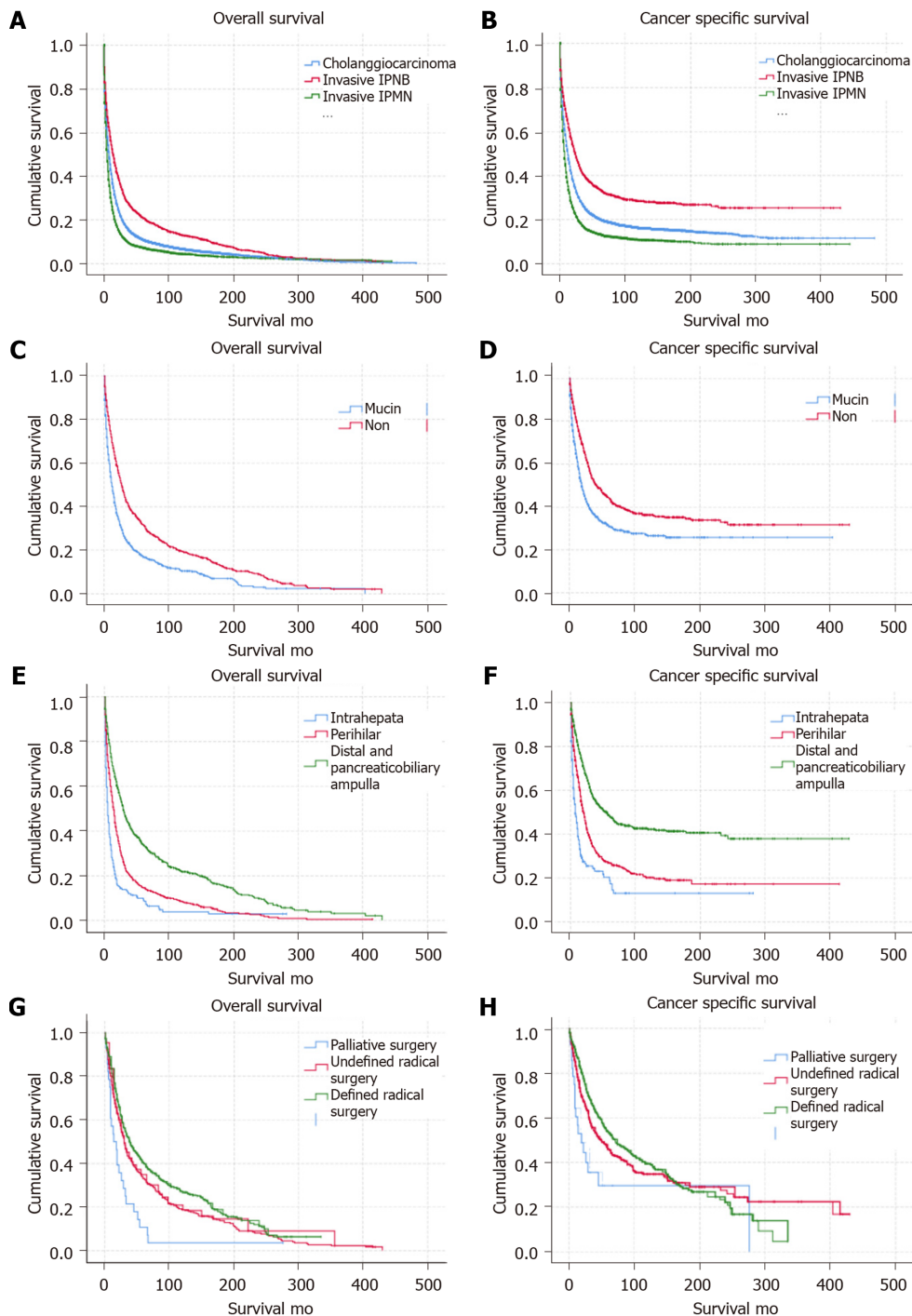
SEER: Surveillance, Epidemiology, and End Results database.



DOI: 10.4251/wjgo.v15.i5.843 Copyright ©The Author(s) 2023.

Figure 2 Incidence and incidence-based mortality trends for invasive intraductal papillary neoplasm of the bile duct, invasive intraductal papillary mucinous neoplasm of the pancreas, and traditional cholangiocarcinoma in Surveillance, Epidemiology, and End Results 9 regs research data, Nov 2018 Sub (1975-2016). ^a $P < 0.05$. A: Incidence trends in invasive intraductal papillary neoplasm of the bile duct (IPNB); B: Incidence trends in invasive intraductal papillary mucinous neoplasm of the pancreas (IPMN); C: Incidence trends in traditional cholangiocarcinoma; D: Incidence-based (IB) mortality trends in invasive IPNB; E: IB mortality trends in invasive IPMN; F: IB mortality trends in traditional cholangiocarcinoma.

CSS rates were 69.4% and 77.8%, 41.7% and 53.1%, and 31.4% and 43.9%, respectively. The median OS and CSS of individuals with the mucin subtype of invasive IPNB were 12 mo (95%CI: 10-13 mo) and 19 mo (95%CI: 16-21 mo), respectively, and the 1-, 3-, and 5-year OS and CSS rates were 49.2% and 61.2%, 23.7% and 36.9%, and 17.1% and 31.2%, respectively. The median OS and CSS of individuals with



DOI: 10.4251/wjgo.v15.i5.843 Copyright ©The Author(s) 2023.

Figure 3 Long-term overall survival and cancer-specific survival outcomes using Kaplan-Meier analysis. A and B: Overall survival (OS) and cancer-specific survival (CSS) were better for invasive intraductal papillary neoplasm of the bile duct (IPNB) and worse for invasive intraductal papillary mucinous neoplasm of the pancreas (IPMN) compared with traditional cholangiocarcinoma ($P < 0.001$); C and D: OS and CSS in individuals with the non-mucin subtype of invasive IPNB was better than for the mucin subtype ($P < 0.05$); E and F: OS and CSS in individuals with invasive IPNB at distal sites and at the pancreaticobiliary ampulla was better than at other sites ($P < 0.001$); G and H: OS and CSS in individuals with invasive IPNB with defined radical surgery was better than other type of surgical treatment ($P < 0.001$).

invasive IPNB in the distal tract and the pancreaticobiliary ampulla were 29 mo (95%CI: 26-33 mo) and 54 mo (95%CI: 42-66 mo), and the 1-, 3-, and 5-year OS and CSS rates were 69.1% and 78.9%, 43.9% and 56%, and 33.7% and 48.3%, respectively. In intrahepatic locations, namely the liver and intrahepatic biliary tract, the median OS and CSS were 5 mo (95%CI: 4-6 mo) and 7 mo (95%CI: 4-10 mo), and the 1-, 3-, and 5-year OS and CSS rates were 27.1% and 37.4%, 12.5% and 23.0%, and 9.2% and 18.8%, respectively. In the perihilar location, the median OS and CSS were 14 mo (95%CI: 12-16 mo) and 20 mo (95%CI: 17-23 mo), and the 1-, 3-, and 5-year OS and CSS rates were 52.9% and 63.8%, 21.2% and 33.6%, and 33.7% and 48.30%, respectively.

In addition to tumor location and subtype, univariable Kaplan-Meier analysis and the log rank test for OS and CSS in individuals with invasive IPNBs also depended on age, tumor grade, SEER historic stage, and treatment. Kaplan-Meier and log-rank analysis of variance indicated that age ≥ 68 years, tumor grade (moderately-differentiated, poorly-differentiated, and undifferentiated or unknown grade), SEER historic stage (regional, distant, and unknown stage), and not undergoing surgery and chemotherapy were associated with higher mortality ($P < 0.05$) (Table 2).

OS and CSS for invasive IPNB and subtypes in surgical group

The median OS and CSS for the total cohort with invasive IPNB in the surgical group was 34 mo (95%CI: 30-37 mo) and 64 mo (95%CI: 48-80 mo), respectively, and the 1-, 3-, and 5-year survival rates were 77.0% and 84.3%, 48.2% and 59.6%, and 36.9% and 50.8%, respectively. In both the surgical group and non-surgical group, individuals with the non-mucin subtype of invasive IPNB had better OS and CSS compared with the mucin subtype ($P = 0.000$) (Supplementary Figure 4A-D). The median OS and CSS of patients with the mucin subtype of invasive IPNB was 27 mo (95%CI: 23-31 mo) and 52 mo (95%CI: 36-68 mo), respectively, compared with 43 mo (95%CI: 35-51 mo) and 72 mo (95%CI: 45-97 mo), respectively. For the mucin subtype of invasive IPNB, the 1-, 3-, and 5-year OS and CSS rates were 74.0% and 83.1%, 41.6% and 54.3%, and 31.3% and 47.6%, respectively. For the non-mucin subtype of invasive IPNB, the 1-, 3-, and 5-year OS and CSS rates were 79.9% and 85.5%, 54.3% and 63.3%, and 42% and 53.8%, respectively. Meanwhile, the OS and CSS of individuals with resected invasive IPNB in the distal tract and the pancreaticobiliary ampulla had the best prognosis compared with individuals with tumors in other sites. The median OS and CSS of patients with invasive IPNB in the distal tract and the pancreaticobiliary ampulla was 44 mo (95%CI: 36-52 mo) and 72 mo (95%CI: 55-88 mo), respectively, and the 1-, 3-, and 5-year survival rates were 80.9% and 86.9%, 55.2% and 64.7%, and 43.3% and 56.7%, respectively. In particular, the 3-, 5-, and 10-year OS and CSS rates of patients with radical resected invasive IPNB in the distal tract and the pancreaticobiliary ampulla were 93.9% and 95.4%, 89.2% and 91.6%, and 73.4% and 81.5%, respectively (Figures 3G, H and 4).

Multivariable Cox regression

According to the multivariable Cox regression analysis of OS and CSS adjusted for the results of the univariable analysis ($P < 0.05$), both OS and CSS were statistically significantly different when comparing surgery and chemotherapy, as follows: surgery not performed *vs* performed [hazard ratio (HR) = 2.99; 95%CI: 2.59-3.45; $P < 0.001$] and (HR = 3.04, 95%CI: 2.55-3.61; $P < 0.001$), respectively; chemotherapy not performed *vs* performed (HR = 1.23, 95%CI: 1.09-1.40; $P < 0.001$) and (HR = 1.21, 95%CI: 1.04-1.14; $P < 0.02$), respectively. Tumor subtype was another important factor related to OS and CSS. For the non-mucin subtype of invasive IPNB *vs* the mucin subtype, OS HR = 0.78; 95%CI: 0.67-0.88; $P < 0.001$ and CSS HR = 0.86; 95%CI: 0.73-0.99; $P < 0.04$. Individuals aged ≥ 68 years (HR = 1.36, 95%CI: 1.21-1.52; $P < 0.001$) had unfavorable OS compared with individuals aged < 68 years. Tumors in the perihilar location (OS: HR = 1.63; 95%CI: 1.36-1.96; $P < 0.001$) and tumors located in the distal tract and at the pancreaticobiliary ampulla (OS HR = 1.41; 95%CI: 1.25-1.60; $P < 0.001$) had better OS *vs* tumor in the intrahepatic location. Likewise, a relatively favorable OS was observed in individuals with well-differentiated grade and localized stage lymph node metastasis compared with moderately- or poorly-differentiated grades and regional and distant lymph node metastasis ($P < 0.01$). The related OS values were as follows: SEER historic regional stage HR = 1.33, 95%CI: 1.16-1.53, $P < 0.001$ and distant stage OS HR = 2.09, 95%CI: 1.75-2.50, $P < 0.001$ *vs* the localized stage; moderately-differentiated tumors (grade II) HR = 1.20, 95%CI: 1.03-1.40, $P < 0.02$ and poorly-differentiated tumors (grade III and IV) HR = 1.26, 95%CI: 1.03-1.52, $P < 0.02$ *vs* well-differentiated (grade I) (Figure 5).

DISCUSSION

To our knowledge, our study is the first to use SEER data to identify the rare incidence of invasive IPNB occurring throughout the biliary tract. We evaluated the incidence and IB mortality associated with invasive IPMN of the pancreas, which may represent a carcinogenic pathway different from the traditional carcinogenic pathway of cholangiocarcinoma caused by flat atypical hyperplasia[18]. The incidence and IB mortality of invasive IPNB and invasive IPMN showed steady decreases in the United States population over the study period, but an increasing trend for traditional cholangiocarcinoma in the biliary tract. The continued decline in the APC of invasive IPNB and IPMN over the study period may be associated with the fact that preventive measures have improved greatly according to the etiology, treatment, and management in recent years. Conversely, treatment for traditional cholangiocarcinoma may still have severe challenges. Hence, more resources should be devoted to traditional cholangiocarcinoma, and efforts should be made to develop improved prevention and treatment strategies.

The prognoses of individuals with invasive IPNB were better than for individuals with invasive IPMN and traditional cholangiocarcinoma. The median OS and CSS in individuals with invasive IPNBs was higher than that of individuals with invasive IPMN and traditional cholangiocarcinoma in the

Table 2 Univariable analysis of factors associated with overall survival and cancer-specific survival

Variable	Univariate (<i>P</i> value)	
	Overall survival	Cancer specific survival
Age at diagnosis, yr	0.000	0.030
< 68		
≥ 68		
Sex	0.785	0.355
Male		
Female		
Race	0.062	0.689
White		
Black		
Others		
TNM7/CSv0204+ schema	0.000	0.000
Intrahepata and liver		
Perihilar		
Distal and pancreaticobiliary ampulla		
SEER historic stage	0.000	0.000
Localized		
Regional		
Distant		
Unstaged		
Grade	0.000	0.000
Well		
Moderate		
Poor and undifferentiated		
Unknown		
Classification	0.000	0.000
Mucin		
Non		
Surgery	0.000	0.000
Defined radical surgery		
Undefined radical surgery		
Palliative surgery		
Non		
Radiation therapy	0.909	0.222
Performed		
Non		
Chemotherapy	0.075	0.040
Performed		
Non		

SEER: Surveillance, Epidemiology, and End Results database.

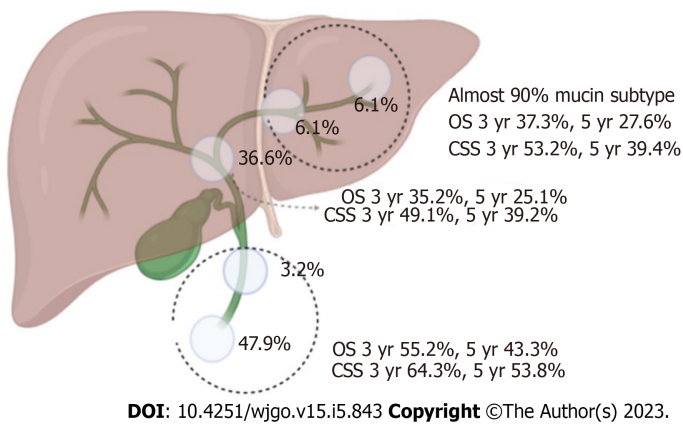


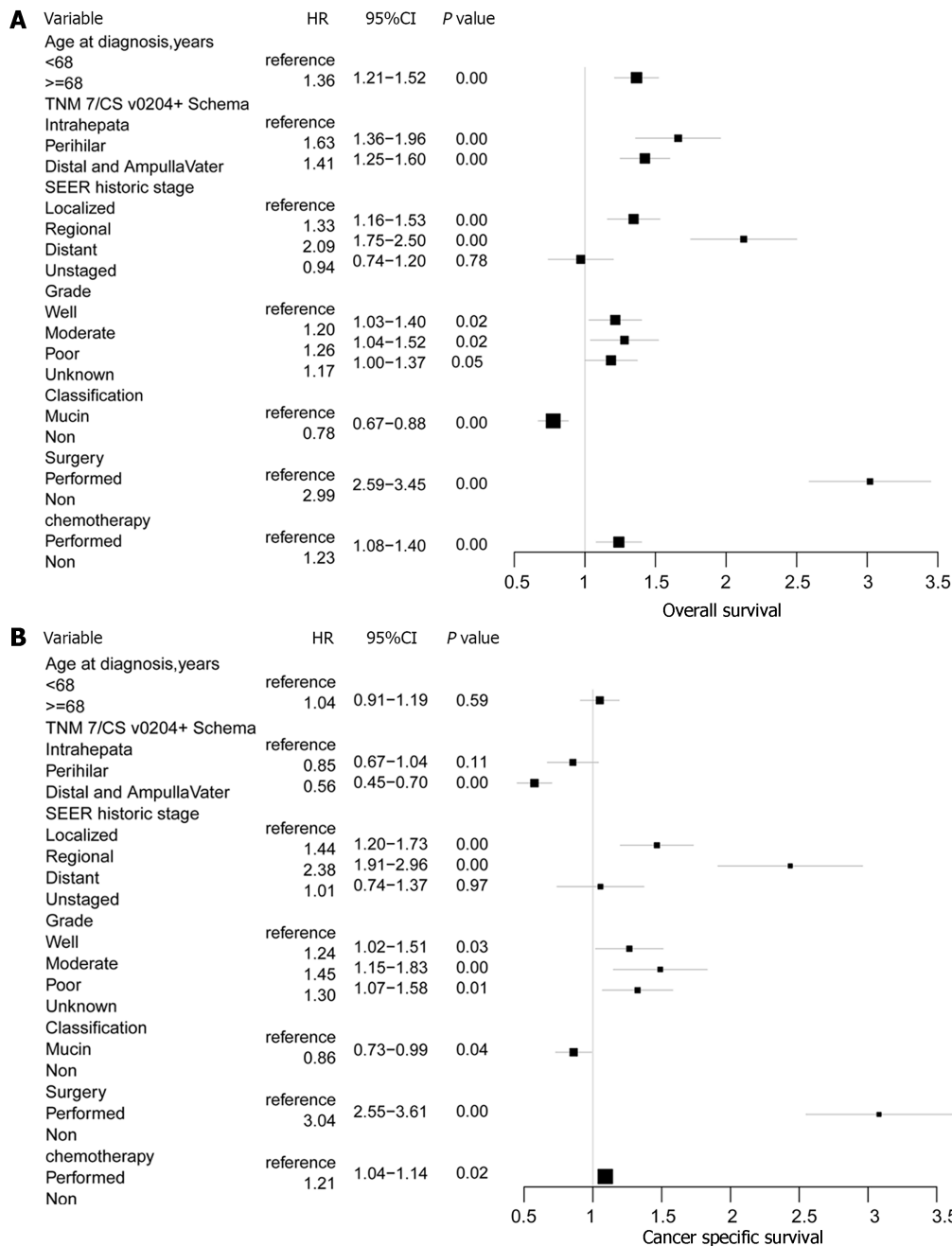
Figure 4 Percentage incidence at different sites, overall survival, and cancer-specific survival of invasive intraductal papillary neoplasm of the bile duct in the surgical group. OS: Overall survival; CCS: Cancer-specific survival.

biliary tract. As reported previously, the prognosis of invasive IPNB is much better than that of traditional cholangiocarcinoma in the biliary tract[19]. It is not clear whether this is because of inherent biological characteristics of these tumors or the growth pattern of IPNB, which grows mainly in the intra-bile ducts, and which may contribute to the early diagnosis of biliary obstruction before it invades the surrounding tissue. However, previous studies consistently indicated that invasive IPNB had a higher degree of malignancy and a worse prognosis compared with invasive IPMN[20]. We found that ampullary invasive IPNB accounted for 47.9% of the individuals in our study cohort, and the prognosis for ampullary tumors was much better than that of individuals with tumors in other pancreaticobiliary ducts.

Our analysis also identified several important clinicopathological features and prognosis findings related to invasive IPNB. Outcomes after surgery for IPNB were generally not well-reported and were hampered by the fact that verifying outcome measurements were used. Gordon-Weeks *et al*[21] reported a 5-year OS rate of 65%, with a range of 24%-84% across seven studies. Our study indicated that HRs for both OS and CSS for invasive IPNB in individuals who did not undergo surgery were three times higher than for individuals who underwent surgery, and the 5-year OS and CSS rates for individuals with invasive IPNB treated with surgery were 36.9% and 50.8%, respectively. These results appear to be more persuasive because, in our cohort, we ruled out benign IPNB and carcinoma in situ, and evaluated only invasive IPNB (ICD-O, 3rd/3). Furthermore, for the first time, to our knowledge, we provided clear evidence that adjuvant chemotherapy can improve OS and CSS rates in individuals with invasive IPNB. In individuals with resected invasive IPMNs, the counterpart to invasive IPNB, adjuvant chemotherapy and radiotherapy were associated with significantly improved OS in the presence of nodal metastases [22-24]. Conversely, radiotherapy had no statistically significant effect on OS and CSS in individuals with invasive IPNB.

In addition to therapeutic factors, our study also indicated that age, tumor grade, SEER lymph node metastasis, tumor site, and mucin-related subtypes also affected the prognosis of individuals with invasive IPNB. In fact, IPNB is a heterogeneous disease, and invasive IPNB belongs to mainly pancreaticobiliary and intestinal type tumors, with invasive colloid carcinoma[25-27]. In our study, most of the mucin-related subtypes belonged to the colloid intestinal-type IPNB, which was always associated with *KRAS*, *GNAS*, and *RNF43* mutations[9]. Our published study have shown that mucus production is also associated with *GNAS* mutation in highly malignancy hepatic mucoepidermoid carcinoma[28]. Individuals with the mucin subtype of invasive IPNB suffered a much worse prognosis following resection compared with individuals with the non-mucin subtype, which was inconsistent with the results of the study by Kim *et al*[27] mainly because the study included mild and carcinoma in situ intestinal types. Meanwhile, the prognosis of invasive IPNB located in the distal bile duct and ampulla was significantly better than that of intrahepatic and perihilar invasive IPNB. On the one hand, intrahepatic invasive IPNB constituted more than 90% mucin-related subtype, which indicated worse prognosis. On the other hand, in individuals with invasive IPNB located in the distal bile duct or ampulla, the clinical symptoms often appeared earlier. Pancreaticoduodenectomy is the main choice of surgical methods for tumors in these sites, which can maximize the chance of radical cure. In addition, the majority of the individuals in this study cohort were white (78.2%), and there is no significant statistic comparing other races for OS and CSS. Because the high-risk factors for IPNB are related to endemic clonorchiasis infections and hepatolithiasis in Asian races compared with the risk factors in Western countries[20].

This study has limitations. First, studies using the SEER database involve a retrospective design, and the registries contain data for individuals from different institutions and time periods. According to 2019 WHO proposal, intraductal papillary neoplasm of ampulla are not included in IPNB[29]. In fact,



DOI: 10.4251/wjgo.v15.i5.843 Copyright ©The Author(s) 2023.

Figure 5 Cox proportional hazard regression analysis of overall survival, and cancer-specific survival for total invasive intraductal papillary neoplasm of the bile duct. A: Overall survival; B: Cancer-specific survival.

the peribiliary glands are attracted attention as a potential origin of IPNB, and predominantly occur at branching points of the biliary tree and are most numerous at the hepatopancreatic ampulla[30,31]. Additionally, the database lacks central reviews by professional pathologists. Second, the study cohort lacked detailed information regarding tumor recurrence, and palliative surgical methods and chemotherapy regimens, which have considerable OS and CSS impact. Furthermore, we used the ICD-O code for IPMN as the reference for IPNB. A group of pathologists in Japan and South Korea suggested that IPNB should be divided into two types; type 1 is the histological counterpart of IPMN, and type 2 has a more complex histological structure[32]. Despite these limitations, some interesting observations were identified. First, in our study cohort, the prognosis between mucin and non-mucin subtypes differed significantly, which also indicated that the expression of mucin is related to the subtypes of IPMN and IPNB[9]. Mucus secretion was mainly immunohistochemically positive for MUC1, which was always associated with the invasive phenotype and individuals' prognosis, similar to previous published reports[21]. Importantly, we also detected correlations between tumor type and location. The minority of invasive IPNBs (6.1%) occurred in the liver, and the majority occurred in the perihilar region

(36.6%) and the pancreaticobiliary ampulla (49.7%). This is because IPNB may originate from biliary stem/progenitor cells, which are located mainly in the peribiliary gland of the perihilum and the hepatopancreatic ampulla; however, biliary stem/progenitor cells also can originate from the canals of Hering and large intrahepatic biliary ducts[30,33-35].

CONCLUSION

In conclusion, the current population-based study revealed a gradual decrease in the incidence and IB mortality rates of invasive IPNB in the United States population during 1975-2016, which was similar to findings for invasive IPMN, but in contrast to the rates for traditional cholangiocarcinoma in the biliary tract. The majority of invasive IPNBs occurred in the perihilum and pancreaticobiliary ampulla. The prognosis of invasive IPNB was not only regarding tumor grade and SEER historic stage, but also for different sites and tumor subtypes. Surgery and chemotherapy are associated with improved invasive IPNB outcomes; individuals who do not undergo surgery have the highest risk of death.

ARTICLE HIGHLIGHTS

Research background

Intraductal papillary neoplasm of the bile duct (IPNB) is a rare distinct subtype of precursor lesions of biliary carcinoma. IPNB is considered to originate from luminal biliary epithelial cells, typically displays mucin-hypersecretion or a papillary growth pattern, and results in cystic dilatation. According to the 2010 World Health Organization classification of tumors in the digestive system, IPNB is defined as the biliary counterpart of intraductal papillary mucinous neoplasm of the pancreas (IPMN) and has identical histopathologic pancreaticobiliary, gastric, intestinal, and oncocytic features. There are still several important differences between IPMN and IPNB exist, unlike invasive IPMN and traditional cholangiocarcinoma in the biliary tract, very little is known about the clinicopathological features and prognostic variables of invasive IPNB.

Research motivation

The epidemiology, tumor characteristics, treatment strategy, and long-term results of invasive IPNB are limited because of the relatively low case numbers.

Research objectives

We conducted a Surveillance, Epidemiology, and End Results (SEER) database evaluation of invasive IPNB to address these shortcomings, and to further elucidate the epidemiological and clinical trends to guide treatment decision-making and to identify further clinical and scientific research areas.

Research methods

Invasive IPNB, IPMN, and traditional cholangiocarcinoma data for affected individuals from 1975 to 2016 were obtained from the SEER database. Annual percentage changes in the incidence and incidence-based (IB) mortality were calculated.

Research results

The incidence and IB mortality of invasive IPNB showed sustained decreases. Similar decreases in incidence and IB mortality were seen for invasive IPMN but not for traditional cholangiocarcinoma. Both overall survival (OS) and cancer-specific survival (CSS) for invasive IPNB were better than for invasive IPMN and traditional cholangiocarcinoma. The most common tumor sites were the pancreaticobiliary ampulla (47.9%) and perihilar tract (36.7%), but the mucin-related subtype of invasive IPNB was the main type, intrahepatically (approximately 90%). In the univariate and multivariate Cox regression analysis, age, tumor site, grade and stage, subtype, surgery, and chemotherapy were associated with OS and CSS ($P < 0.05$).

Research conclusions

Current population-based study revealed a gradual decrease in the incidence and IB mortality rates of invasive IPNB in the United States population during 1975-2016. The prognosis of invasive IPNB was not only regarding tumor grade and SEER historic stage, but also for different sites and tumor subtypes. Surgery and chemotherapy are associated with improved invasive IPNB outcomes; individuals who do not undergo surgery have the highest risk of death.

Research perspectives

The inspiration of this article is that we found a rare case of hepatic mucoidepidermoid carcinoma

(HMEC) in our cancer research center, and found that the malignancy mucinous carcinoma in liver including IPNB, mucinous cystadenocarcinoma and adenosquamous carcinoma. So in our future research direction, we will analyze IPNB cases' tissues from our center by the next generation sequencing, combined with our published article to analyze the relationship between IPNB and HMEC.

ACKNOWLEDGEMENTS

We thank Peng Huang, PhD, from the center for Evidence-Base Medicine, School of Public Health, Nanchang University for professional knowledge guidance in statistics.

FOOTNOTES

Author contributions: Wu RS and Liao WJ contributed equally to this work, Wu RS and Hou P contributed to the conceptualization, formal analysis, software, and writing-original draft; Liao WJ and Wu LQ contributed to the conceptualization, writing-review and editing, project administration; Ma JS and Wang JK contributed to the data curation and methodology. All authors had access to the study data and reviewed and approved the final article. All authors read and approved the final manuscript

Supported by the National Natural Science Foundation of China, No. 81860431 and 82060447; and the Jiangxi Natural Science Foundation, No. 20181BBG70025.

Institutional review board statement: The Surveillance, Epidemiology, and End Results Program of the National Cancer Institute belong to public databases. The patients involved in the database have obtained ethical approval.

Conflict-of-interest statement: The authors declare no conflict of interests.

Data sharing statement: Technical appendix, statistical code, and dataset available from the corresponding author at houping1986@16.com.

Open-Access: This article is an open-access article that was selected by an in-house editor and fully peer-reviewed by external reviewers. It is distributed in accordance with the Creative Commons Attribution NonCommercial (CC BY-NC 4.0) license, which permits others to distribute, remix, adapt, build upon this work non-commercially, and license their derivative works on different terms, provided the original work is properly cited and the use is non-commercial. See: <https://creativecommons.org/licenses/by-nc/4.0/>

Country/Territory of origin: China

ORCID number: Rong-Shou Wu 0000-0003-2695-1907; Ping Hou 0000-0003-4436-1871.

S-Editor: Zhang H

L-Editor: A

P-Editor: Zhang H

REFERENCES

- 1 **Chen TC**, Nakanuma Y, Zen Y, Chen MF, Jan YY, Yeh TS, Chiu CT, Kuo TT, Kamiya J, Oda K, Hamaguchi M, Ohno Y, Hsieh LL, Nimura Y. Intraductal papillary neoplasia of the liver associated with hepatolithiasis. *Hepatology* 2001; **34**: 651-658 [PMID: 11584359 DOI: 10.1053/jhep.2001.28199]
- 2 **Zen Y**, Fujii T, Itatsu K, Nakamura K, Minato H, Kasashima S, Kurumaya H, Katayanagi K, Kawashima A, Masuda S, Niwa H, Mitsui T, Asada Y, Miura S, Ohta T, Nakanuma Y. Biliary papillary tumors share pathological features with intraductal papillary mucinous neoplasm of the pancreas. *Hepatology* 2006; **44**: 1333-1343 [PMID: 17058219 DOI: 10.1002/hep.21387]
- 3 **Lee SS**, Kim MH, Lee SK, Jang SJ, Song MH, Kim KP, Kim HJ, Seo DW, Song DE, Yu E, Lee SG, Min YI. Clinicopathologic review of 58 patients with biliary papillomatosis. *Cancer* 2004; **100**: 783-793 [PMID: 14770435 DOI: 10.1002/cncr.20031]
- 4 **Shibahara H**, Tamada S, Goto M, Oda K, Nagino M, Nagasaka T, Batra SK, Hollingsworth MA, Imai K, Nimura Y, Yonezawa S. Pathologic features of mucin-producing bile duct tumors: two histopathologic categories as counterparts of pancreatic intraductal papillary-mucinous neoplasms. *Am J Surg Pathol* 2004; **28**: 327-338 [PMID: 15104295 DOI: 10.1097/0000478-200403000-00005]
- 5 **Nakanuma Y**, Miyata T, Uchida T. Latest advances in the pathological understanding of cholangiocarcinomas. *Expert Rev Gastroenterol Hepatol* 2016; **10**: 113-127 [PMID: 26492529 DOI: 10.1586/17474124.2016.1104246]
- 6 **Bosman FT**, Carneiro F, Hruban RH, Theise ND. WHO classification of tumours of the digestive system. 4th ed. Lyon, France: IARC, 2010

- 7 **Eberhard D**, Tosh D, Slack JM. Origin of pancreatic endocrine cells from biliary duct epithelium. *Cell Mol Life Sci* 2008; **65**: 3467-3480 [PMID: [18810318](#) DOI: [10.1007/s00018-008-8427-1](#)]
- 8 **Fukumura Y**, Nakanuma Y, Kakuda Y, Takase M, Yao T. Clinicopathological features of intraductal papillary neoplasms of the bile duct: a comparison with intraductal papillary mucinous neoplasm of the pancreas with reference to subtypes. *Virchows Arch* 2017; **471**: 65-76 [PMID: [28550497](#) DOI: [10.1007/s00428-017-2144-9](#)]
- 9 **Ohtsuka M**, Kimura F, Shimizu H, Yoshidome H, Kato A, Yoshitomi H, Furukawa K, Takeuchi D, Takayashiki T, Suda K, Takano S, Kondo Y, Miyazaki M. Similarities and differences between intraductal papillary tumors of the bile duct with and without macroscopically visible mucin secretion. *Am J Surg Pathol* 2011; **35**: 512-521 [PMID: [21412069](#) DOI: [10.1097/PAS.0b013e3182103f36](#)]
- 10 **Nakanuma Y**, Uesaka K, Kakuda Y, Sugino T, Kubota K, Furukawa T, Fukumura Y, Isayama H, Terada T. Intraductal Papillary Neoplasm of Bile Duct: Updated Clinicopathological Characteristics and Molecular and Genetic Alterations. *J Clin Med* 2020; **9** [PMID: [33317146](#) DOI: [10.3390/jcm9123991](#)]
- 11 **Wu X**, Li B, Zheng C, Chang X, Zhang T, He X, Zhao Y. Intraductal papillary neoplasm of the bile duct: a single-center retrospective study. *J Int Med Res* 2018; **46**: 4258-4268 [PMID: [30111208](#) DOI: [10.1177/0300060518792800](#)]
- 12 **Kim JR**, Jang KT, Jang JY, Lee K, Kim JH, Kim H, Kim SW, Kwon W, Choi DW, Heo J, Han IW, Hwang S, Kim WJ, Hong SM, Kim DS, Yu YD, Kim JY, Nah YW, Park HW, Choi HJ, Han HS, Yoon YS, Park SJ, Hong EK, Seo HI, Park DY, Kang KJ, Kang YN, Yu HC, Moon WS, Lim CS, Bae JM, Jo S, Lee W, Roh YH, Jeong JS, Jeong CY, Lee JS, Song IS, Kim KH, Kim HG, Cho CH, Joo SH, Won KY, Kim HJ, Choi JH, Chu CW, Lee JH, Park IY, Lee H, Lee SE, Kim HS, Lee HK, Cho MS, Han KM. Clinicopathologic analysis of intraductal papillary neoplasm of bile duct: Korean multicenter cohort study. *HPB (Oxford)* 2020; **22**: 1139-1148 [PMID: [31837945](#) DOI: [10.1016/j.hpb.2019.11.007](#)]
- 13 **Gaitanidis A**, Alevizakos M, Tsaroucha A, Tsalikidis C, Simopoulos C, Pitiakoudis M. Conditional survival analysis for patients with intraductal papillary mucinous neoplasms (IPMNs) undergoing curative resection. *Eur J Surg Oncol* 2018; **44**: 693-699 [PMID: [29426780](#) DOI: [10.1016/j.ejso.2018.01.011](#)]
- 14 **Worni M**, Akushevich I, Gloor B, Scarborough J, Chino JP, Jacobs DO, Hahn SM, Clary BM, Pietrobon R, Shah A. Adjuvant radiotherapy in the treatment of invasive intraductal papillary mucinous neoplasm of the pancreas: an analysis of the surveillance, epidemiology, and end results registry. *Ann Surg Oncol* 2012; **19**: 1316-1323 [PMID: [22002799](#) DOI: [10.1245/s10434-011-2088-2](#)]
- 15 **Kargozaran H**, Vu V, Ray P, Bagaria S, Steen S, Ye X, Gagandeep S. Invasive IPMN and MCN: same organ, different outcomes? *Ann Surg Oncol* 2011; **18**: 345-351 [PMID: [20809175](#) DOI: [10.1245/s10434-010-1309-4](#)]
- 16 **Wasif N**, Bentrem DJ, Farrell JJ, Ko CY, Hines OJ, Reber HA, Tomlinson JS. Invasive intraductal papillary mucinous neoplasm versus sporadic pancreatic adenocarcinoma: a stage-matched comparison of outcomes. *Cancer* 2010; **116**: 3369-3377 [PMID: [20564064](#) DOI: [10.1002/cncr.25070](#)]
- 17 **Khan SA**, Emadossadaty S, Ladep NG, Thomas HC, Elliott P, Taylor-Robinson SD, Toledano MB. Rising trends in cholangiocarcinoma: is the ICD classification system misleading us? *J Hepatol* 2012; **56**: 848-854 [PMID: [22173164](#) DOI: [10.1016/j.jhep.2011.11.015](#)]
- 18 **Rocha FG**, Lee H, Katabi N, DeMatteo RP, Fong Y, D'Angelica MI, Allen PJ, Klimstra DS, Jarnagin WR. Intraductal papillary neoplasm of the bile duct: a biliary equivalent to intraductal papillary mucinous neoplasm of the pancreas? *Hepatology* 2012; **56**: 1352-1360 [PMID: [22504729](#) DOI: [10.1002/hep.25786](#)]
- 19 **Fujikura K**, Fukumoto T, Ajiki T, Otani K, Kanzawa M, Akita M, Kido M, Ku Y, Itoh T, Zen Y. Comparative clinicopathological study of biliary intraductal papillary neoplasms and papillary cholangiocarcinomas. *Histopathology* 2016; **69**: 950-961 [PMID: [27410028](#) DOI: [10.1111/his.13037](#)]
- 20 **Zen Y**, Jang KT, Ahn S, Kim DH, Choi DW, Choi SH, Heo JS, Yeh MM. Intraductal papillary neoplasms and mucinous cystic neoplasms of the hepatobiliary system: demographic differences between Asian and Western populations, and comparison with pancreatic counterparts. *Histopathology* 2014; **65**: 164-173 [PMID: [24456415](#) DOI: [10.1111/his.12378](#)]
- 21 **Gordon-Weeks AN**, Jones K, Harriss E, Smith A, Silva M. Systematic Review and Meta-analysis of Current Experience in Treating IPNB: Clinical and Pathological Correlates. *Ann Surg* 2016; **263**: 656-663 [PMID: [26501712](#) DOI: [10.1097/SLA.0000000000001426](#)]
- 22 **Mungo B**, Croce C, Oba A, Ahrendt S, Gleisner A, Friedman C, Schulick RD, Del Chiaro M. Controversial Role of Adjuvant Therapy in Node-Negative Invasive Intraductal Papillary Mucinous Neoplasm. *Ann Surg Oncol* 2021; **28**: 1533-1542 [PMID: [32743713](#) DOI: [10.1245/s10434-020-08916-6](#)]
- 23 **Wu JY**, Wang YF, Ma H, Li SS, Miao HL. Nomograms predicting long-term survival in patients with invasive intraductal papillary mucinous neoplasms of the pancreas: A population-based study. *World J Gastroenterol* 2020; **26**: 535-549 [PMID: [32089629](#) DOI: [10.3748/wjg.v26.i5.535](#)]
- 24 **Aronsson L**, Marinko S, Ansari D, Andersson R. Adjuvant therapy in invasive intraductal papillary mucinous neoplasm (IPMN) of the pancreas: a systematic review. *Ann Transl Med* 2019; **7**: 689 [PMID: [31930090](#) DOI: [10.21037/atm.2019.10.37](#)]
- 25 **Aoki Y**, Mizuma M, Hata T, Aoki T, Omori Y, Ono Y, Mizukami Y, Unno M, Furukawa T. Intraductal papillary neoplasms of the bile duct consist of two distinct types specifically associated with clinicopathological features and molecular phenotypes. *J Pathol* 2020; **251**: 38-48 [PMID: [32100878](#) DOI: [10.1002/path.5398](#)]
- 26 **Choi SC**, Lee JK, Jung JH, Lee JS, Lee KH, Lee KT, Rhee JC, Jang KT, Choi SH, Heo JS, Choi DW, Lim JH. The clinicopathological features of biliary intraductal papillary neoplasms according to the location of tumors. *J Gastroenterol Hepatol* 2010; **25**: 725-730 [PMID: [20492329](#) DOI: [10.1111/j.1440-1746.2009.06104.x](#)]
- 27 **Kim KM**, Lee JK, Shin JU, Lee KH, Lee KT, Sung JY, Jang KT, Heo JS, Choi SH, Choi DW, Lim JH. Clinicopathologic features of intraductal papillary neoplasm of the bile duct according to histologic subtype. *Am J Gastroenterol* 2012; **107**: 118-125 [PMID: [21946282](#) DOI: [10.1038/ajg.2011.316](#)]
- 28 **Hou P**, Su X, Cao W, Xu L, Zhang R, Huang Z, Wang J, Li L, Wu L, Liao W. Whole-exome sequencing reveals the etiology of the rare primary hepatic mucoepidermoid carcinoma. *Diagn Pathol* 2021; **16**: 29 [PMID: [33832503](#) DOI: [10.1186/s13000-021-01086-3](#)]
- 29 **Nagtegaal ID**, Odze RD, Klimstra D, Paradis V, Rugge M, Schirmacher P, Washington KM, Carneiro F, Cree IA; WHO

Classification of Tumours Editorial Board. The 2019 WHO classification of tumours of the digestive system. *Histopathology* 2020; **76**: 182-188 [PMID: [31433515](#) DOI: [10.1111/his.13975](#)]

- 30 **Cardinale V**, Wang Y, Carpino G, Reid LM, Gaudio E, Alvaro D. Mucin-producing cholangiocarcinoma might derive from biliary tree stem/progenitor cells located in peribiliary glands. *Hepatology* 2012; **55**: 2041-2042 [PMID: [22262236](#) DOI: [10.1002/hep.25587](#)]
- 31 **Nakagawa H**, Hayata Y, Yamada T, Kawamura S, Suzuki N, Koike K. Peribiliary Glands as the Cellular Origin of Biliary Tract Cancer. *Int J Mol Sci* 2018; **19** [PMID: [29895797](#) DOI: [10.3390/ijms19061745](#)]
- 32 **Nakanuma Y**, Jang KT, Fukushima N, Furukawa T, Hong SM, Kim H, Lee KB, Zen Y, Jang JY, Kubota K. A statement by the Japan-Korea expert pathologists for future clinicopathological and molecular analyses toward consensus building of intraductal papillary neoplasm of the bile duct through several opinions at the present stage. *J Hepatobiliary Pancreat Sci* 2018; **25**: 181-187 [PMID: [29272078](#) DOI: [10.1002/jhbp.532](#)]
- 33 **Carpino G**, Cardinale V, Onori P, Franchitto A, Berloco PB, Rossi M, Wang Y, Semeraro R, Anceschi M, Brunelli R, Alvaro D, Reid LM, Gaudio E. Biliary tree stem/progenitor cells in glands of extrahepatic and intrahepatic bile ducts: an anatomical in situ study yielding evidence of maturational lineages. *J Anat* 2012; **220**: 186-199 [PMID: [22136171](#) DOI: [10.1111/j.1469-7580.2011.01462.x](#)]
- 34 **Nakanuma Y**, Kurumaya H, Ohta G. Multiple cysts in the hepatic hilum and their pathogenesis. A suggestion of periductal gland origin. *Virchows Arch A Pathol Anat Histopathol* 1984; **404**: 341-350 [PMID: [6093347](#) DOI: [10.1007/BF00695218](#)]
- 35 **Turner R**, Lozoya O, Wang Y, Cardinale V, Gaudio E, Alpini G, Mendel G, Wauthier E, Barbier C, Alvaro D, Reid LM. Human hepatic stem cell and maturational liver lineage biology. *Hepatology* 2011; **53**: 1035-1045 [PMID: [21374667](#) DOI: [10.1002/hep.24157](#)]



Published by **Baishideng Publishing Group Inc**
7041 Koll Center Parkway, Suite 160, Pleasanton, CA 94566, USA

Telephone: +1-925-3991568

E-mail: bpgoffice@wjgnet.com

Help Desk: <https://www.f6publishing.com/helpdesk>

<https://www.wjgnet.com>

