

World Journal of *Gastrointestinal Oncology*

World J Gastrointest Oncol 2023 August 15; 15(8): 1317-1504



REVIEW

- 1317 Update and latest advances in mechanisms and management of colitis-associated colorectal cancer
Dan WY, Zhou GZ, Peng LH, Pan F

MINIREVIEWS

- 1332 Breast cancer metastasizing to the upper gastrointestinal tract (the esophagus and the stomach): A comprehensive review of the literature
Da Cunha T, Restrepo D, Abi-Saleh S, Dharan M
- 1342 Research progress on drug delivery systems for curcumin in the treatment of gastrointestinal tumors
Wu X, Yang Y

ORIGINAL ARTICLE

Basic Study

- 1349 Potential of damage associated molecular patterns in synergising radiation and the immune response in oesophageal cancer
Donlon NE, Davern M, Sheppard A, O'Connell F, Moran B, Nugent TS, Heeran A, Phelan JJ, Bhardwaj A, Butler C, Ravi N, Donohoe CL, Lynam-Lennon N, Maher S, Reynolds JV, Lysaght J
- 1366 LINC01268 promotes epithelial-mesenchymal transition, invasion and metastasis of gastric cancer *via* the PI3K/Akt signaling pathway and targeting MARCKS
Tang LH, Ye PC, Yao L, Luo YJ, Tan W, Xiang WP, Liu ZL, Tan L, Xiao JW
- 1384 Antitumor activity of miR-188-3p in gastric cancer is achieved by targeting CBL expression and inactivating the AKT/mTOR signaling
Lin JJ, Luo BH, Su T, Yang Q, Zhang QF, Dai WY, Liu Y, Xiang L
- 1400 Physcion increases the sensitivity of hepatocellular carcinoma to sorafenib through miRNA-370/PIM1 axis-regulated glycolysis
Pan XP, Jiya BR, Wang F, Lan Z

Clinical and Translational Research

- 1412 Expression patterns of cluster of differentiation 147 impact the prognosis of hepatocellular carcinoma
Xu YJ, He HJ, Wu P, Li WB

Case Control Study

- 1424 Fecal microbial biomarkers combined with multi-target stool DNA test improve diagnostic accuracy for colorectal cancer
Fan JQ, Zhao WF, Lu QW, Zha FR, Lv LB, Ye GL, Gao HL

Retrospective Cohort Study

- 1436** Comparison of clinicopathological characteristics and survival outcomes between gallbladder mucinous adenocarcinoma and gallbladder adenocarcinoma: A propensity score-matched study

Yang WW, Fang YT, Niu YR, Sun YK

- 1451** Incidence and prevalence of gastric neuroendocrine tumors in patients with chronic atrophic autoimmune gastritis

Massironi S, Gallo C, Elvevi A, Stegagnini M, Coltro LA, Invernizzi P

Retrospective Study

- 1461** Epidemiologic characteristics and risk factors associated with overall survival for patients with mucinous colorectal cancer: A population-based study

Jiang J, Tang XW, Huang S, Hu N, Chen Y, Luo B, Ren WS, Peng Y, Yang WX, Lü MH

- 1475** Carcinoembryonic antigen, carbohydrate antigen 199 and carbohydrate antigen 724 in gastric cancer and their relationship with clinical prognosis

Wang R, Zuo CL, Zhang R, Zhu LM

Observational Study

- 1486** Development and application of hepatocellular carcinoma risk prediction model based on clinical characteristics and liver related indexes

Liu ZJ, Xu Y, Wang WX, Guo B, Zhang GY, Luo GC, Wang Q

CASE REPORT

- 1497** Gastric neuroendocrine tumors in a BRCA2 germline mutation carrier: A case report

Zhang HF, Zheng Y, Wen X, Zhao J, Li J

ABOUT COVER

Editorial Board Member of *World Journal of Gastrointestinal Oncology*, Tomohide Hori, FACS, MD, PhD, Chief Doctor, Director, Doctor, Surgeon, Department of Gastroenterology and Hepatology, Nagai Hospital, Tsu 514-8508, Mie, Japan. tomohidehori@yahoo.co.jp

AIMS AND SCOPE

The primary aim of *World Journal of Gastrointestinal Oncology* (WJGO, *World J Gastrointest Oncol*) is to provide scholars and readers from various fields of gastrointestinal oncology with a platform to publish high-quality basic and clinical research articles and communicate their research findings online.

WJGO mainly publishes articles reporting research results and findings obtained in the field of gastrointestinal oncology and covering a wide range of topics including liver cell adenoma, gastric neoplasms, appendiceal neoplasms, biliary tract neoplasms, hepatocellular carcinoma, pancreatic carcinoma, cecal neoplasms, colonic neoplasms, colorectal neoplasms, duodenal neoplasms, esophageal neoplasms, gallbladder neoplasms, *etc.*

INDEXING/ABSTRACTING

The WJGO is now abstracted and indexed in PubMed, PubMed Central, Science Citation Index Expanded (SCIE, also known as SciSearch®), Journal Citation Reports/Science Edition, Scopus, Reference Citation Analysis, China National Knowledge Infrastructure, China Science and Technology Journal Database, and Superstar Journals Database. The 2023 edition of Journal Citation Reports® cites the 2022 impact factor (IF) for WJGO as 3.0; IF without journal self cites: 2.9; 5-year IF: 3.0; Journal Citation Indicator: 0.49; Ranking: 157 among 241 journals in oncology; Quartile category: Q3; Ranking: 58 among 93 journals in gastroenterology and hepatology; and Quartile category: Q3. The WJGO's CiteScore for 2022 is 4.1 and Scopus CiteScore rank 2022: Gastroenterology is 71/149; Oncology is 197/366.

RESPONSIBLE EDITORS FOR THIS ISSUE

Production Editor: Xiang-Di Zhang; **Production Department Director:** Xiang Li; **Editorial Office Director:** Jia-Ru Fan.

NAME OF JOURNAL

World Journal of Gastrointestinal Oncology

ISSN

ISSN 1948-5204 (online)

LAUNCH DATE

February 15, 2009

FREQUENCY

Monthly

EDITORS-IN-CHIEF

Monjur Ahmed, Florin Burada

EDITORIAL BOARD MEMBERS

<https://www.wjgnet.com/1948-5204/editorialboard.htm>

PUBLICATION DATE

August 15, 2023

COPYRIGHT

© 2023 Baishideng Publishing Group Inc

INSTRUCTIONS TO AUTHORS

<https://www.wjgnet.com/bpg/gerinfo/204>

GUIDELINES FOR ETHICS DOCUMENTS

<https://www.wjgnet.com/bpg/GerInfo/287>

GUIDELINES FOR NON-NATIVE SPEAKERS OF ENGLISH

<https://www.wjgnet.com/bpg/gerinfo/240>

PUBLICATION ETHICS

<https://www.wjgnet.com/bpg/GerInfo/288>

PUBLICATION MISCONDUCT

<https://www.wjgnet.com/bpg/gerinfo/208>

ARTICLE PROCESSING CHARGE

<https://www.wjgnet.com/bpg/gerinfo/242>

STEPS FOR SUBMITTING MANUSCRIPTS

<https://www.wjgnet.com/bpg/GerInfo/239>

ONLINE SUBMISSION

<https://www.f6publishing.com>



Retrospective Study

Epidemiologic characteristics and risk factors associated with overall survival for patients with mucinous colorectal cancer: A population-based study

Jiao Jiang, Xiao-Wei Tang, Shu Huang, Nan Hu, Yuan Chen, Bei Luo, Wen-Sen Ren, Yan Peng, Wei-Xing Yang, Mu-Han Lü

Specialty type: Oncology

Provenance and peer review:

Unsolicited article; Externally peer reviewed.

Peer-review model: Single blind

Peer-review report's scientific quality classification

Grade A (Excellent): 0

Grade B (Very good): B, B

Grade C (Good): 0

Grade D (Fair): 0

Grade E (Poor): 0

P-Reviewer: Jena MK, India; Sahin TT, Turkey

Received: April 17, 2023

Peer-review started: April 17, 2023

First decision: May 4, 2023

Revised: May 21, 2023

Accepted: June 13, 2023

Article in press: June 13, 2023

Published online: August 15, 2023



Jiao Jiang, Xiao-Wei Tang, Nan Hu, Yuan Chen, Bei Luo, Wen-Sen Ren, Yan Peng, Wei-Xing Yang, Mu-Han Lü, Department of Gastroenterology, the Affiliated Hospital of Southwest Medical University, Luzhou 646099, Sichuan Province, China

Shu Huang, Department of Gastroenterology, the People's Hospital of Lianshui, Huaian 223400, Jiangsu Province, China

Corresponding author: Mu-Han Lü, MD, PhD, Full Professor, Department of Gastroenterology, the Affiliated Hospital of Southwest Medical University, No. 25 Taiping Street, Jiangyang District, Luzhou 646099, Sichuan Province, China. lvmuhan@swmu.edu.cn

Abstract

BACKGROUND

Mucinous adenocarcinoma (MC) has attracted much attention as a distinct histologic subtype of colorectal cancer in recent years. However, data about its epidemiologic and prognostic characteristics are limited. Therefore, patient data extracted from the National Cancer Institute's Surveillance, Epidemiology, and End Results Program were collected to analyze the epidemiologic and clinicopathological characteristics of MC.

AIM

To determine the epidemiologic and clinicopathological characteristics of MC.

METHODS

The incidence trend of MC was calculated through the Joinpoint Regression Program. Cox regression analyses were performed to identify prognostic factors associated with overall survival (OS). A nomogram was established to predict the survival probability of individual patients with MC.

RESULTS

We found that rates of MC decreased from 4.50/100000 in 2000 to 1.54/100000 in 2018. Rates of MCs in patients aged ≤ 50 years decreased 2.27%/year during 2000-2018. The incidence of appendiceal MCs increased from 0.14/100000 in 2000 to 0.24/100000 in 2018, while the incidence in other anatomic subsites continued to decrease. On multivariable Cox analyses, age, race, tumor site, T stage, N stage, M

stage, surgery, and chemotherapy were associated with OS. A nomogram was developed based on these factors, and the area under the curve for 1-year, 3-year, and 5-year OS in the training cohort was 0.778, 0.778, and 0.768, respectively.

CONCLUSION

Our results demonstrated that MC incidence decreased in almost all anatomic subgroups except for the appendix. A nomogram predicting the survival probability of patients with MCs showed good performance.

Key Words: Mucinous adenocarcinoma; Colorectal cancer; Epidemiology; Prognostic factor; Nomogram; Surveillance epidemiology and end results database

©The Author(s) 2023. Published by Baishideng Publishing Group Inc. All rights reserved.

Core Tip: When stratified by anatomic location, incidence rates declined in almost all anatomic subgroups except for mucinous adenocarcinoma in the appendix. Clinicians should also pay attention to the increasing incidence of appendiceal mucinous adenocarcinoma. During the survival analysis, we found that age, race, tumor site, surgery, and chemotherapy were significantly associated with survival. A nomogram based on those factors as well as the TNM tumor stages showed good predictive performance, which indicated that in addition to the TNM stages, characteristics such as tumor site, age, and race were also important in developing individualized treatment plans for patients with mucinous colorectal cancer.

Citation: Jiang J, Tang XW, Huang S, Hu N, Chen Y, Luo B, Ren WS, Peng Y, Yang WX, Lü MH. Epidemiologic characteristics and risk factors associated with overall survival for patients with mucinous colorectal cancer: A population-based study. *World J Gastrointest Oncol* 2023; 15(8): 1461-1474

URL: <https://www.wjgnet.com/1948-5204/full/v15/i8/1461.htm>

DOI: <https://dx.doi.org/10.4251/wjgo.v15.i8.1461>

INTRODUCTION

Colorectal cancer (CRC) is the third most frequent cancer and ranks second with respect to cancer-related mortality worldwide[1]. Mucinous adenocarcinoma (MC), defined as having more than 50% of the tumor component as extra-cellular mucin, is a distinct histologic subtype of CRC and accounts for 5%-15% of CRC cases[2,3]. MC differs from nonmucinous CRC in terms of clinicopathological characteristics and genetic features. Compared with nonmucinous CRC, mucinous CRC is more often diagnosed at advanced stages and more commonly found in younger and female patients[3,4]. In view of the increasing incidence of young-onset CRC[5], there is an interest in determining whether the incidence of MC continues to increase because MC is more commonly diagnosed in younger patients. However, there are limited and antiquated epidemiologic data for mucinous CRC.

To date, the prognostic significance of MC remains controversial. Few studies have determined the prognostic risk factors that are associated with the overall survival (OS) of mucinous CRC. Currently, the TNM staging system created and updated by the American Joint Committee on Cancer and the International Union Against Cancer serves as the standard to evaluate cancer status and is the main method to assess the prognosis of cancer patients. However, other elements, such as age, sex, race and ethnicity, and primary tumor site, probably play a role in predicting the prognosis of cancer patients[6,7]. Considering the limitations of the TNM staging system, nomograms have emerged and have been widely used as a simpler but more sophisticated method, given that nomograms could integrate diverse prognostic variables into the model from biological to clinicopathological characteristics[8].

Therefore, in the present study, we conducted a population-based analysis of the epidemiologic and clinicopathological characteristics of mucinous CRC on the basis of data extracted from the National Cancer Institute's Surveillance, Epidemiology, and End Results (SEER) Program and developed a nomogram to predict the 1-year, 3-year, and 5-year OS of patients with mucinous CRC.

MATERIALS AND METHODS

Study design and population

This is a retrospective cohort study based on data collected from 18 cancer registries in the SEER program, which covers approximately 27.8% of the United States population. This study is reported in line with the Strengthening the Reporting of Observational Studies in Epidemiology statement. Two researchers conducted the data collection process independently to avoid potential selection bias. The review and informed consent were exempted by the institutional review board for the use of a freely available database.

Patients were enrolled with the following criteria: diagnosed with mucinous CRC according to the International Classification of Diseases for Oncology, Third Edition and receiving a diagnosis between 2000 and 2018. Patients with preexisting malignant tumors were excluded. To ensure a follow-up time of at least 3 years, only those patients diagnosed between 2010 and 2015 with complete medical records and sufficient survival data (of complete follow-up and a survival > 1 mo) documented were included in the construction of the nomogram model to predict OS. The study design is presented in [Figure 1](#).

Variable evaluation and definition

Because of their potential association with OS, the following clinicopathological characteristics were converted into categorical variables and analyzed: Age, sex, race (White, Black, Asian and Pacific Islander, and American Indian and Alaska Native), tumor site, primary tumor size, grade (well differentiated, moderately differentiated, poorly differentiated, and undifferentiated), disease stage (localized, regional, and distant according to SEER staging system), TNM stage derived from American Joint Committee on Cancer staging system 7th edition, surgery, radiation, and chemotherapy. Notably, tumors fell into four anatomic categories: proximal colon (cecum, ascending colon, and hepatic flexure), transverse colon, distal colon (splenic flexure, descending colon, sigmoid colon, and rectosigmoid junction), and rectum.

Statistical analysis

Incidence rates were age-adjusted to the 2000 United States population and acquired by using SEER*Stat software (version 8.4.0.1). Joinpoint Regression Program (version 4.9.1.0) was used to identify yearly trends in annual percent change (APC) in rates. The tool calculated the APC with data fitted to the simplest joinpoint regression model and tested the significance using a Monte Carlo permutation method.

The outcome of interest was OS, defined as the time period that elapsed from diagnosis to death of any cause or the last follow-up. Patients were randomly divided into 7:3 training ($n = 4379$) and validation ($n = 1877$) groups using the R program (version 4.2.1, www.r-project.org). Univariate and multivariate Cox proportional hazards regression analyses were performed to identify prognostic factors associated with OS, with hazard ratios (HRs) and 95% confidence intervals (CIs) being calculated. The analyses were conducted with SPSS, version 27 (IBM Corp). A nomogram was constructed to predict 1-year, 3-year, and 5-year OS probability based on those factors identified by multivariable Cox regression analysis.

The concordance index (C-index) and area under the receiver operating characteristic curve (AUC) were calculated to evaluate the predictive accuracy of the nomogram. The calibration curve was plotted to determine how far the predicted survival was from the actual survival. Kaplan-Meier survival curves were used to present OS, and differences were compared using the log-rank test. The “rms,” “Survival,” “survival ROC,” and “foreign” packages of R were used in the construction and verification of the nomogram. Statistical significance was defined as a two-tailed P value less than 0.05.

RESULTS

Patient characteristics

From 2000 to 2018, a total of 45481 patients with mucinous CRC were identified, with a median age of 68 years at diagnosis (interquartile range, 57-78). Among them, 81.6% were White patients, 11.2% were Black patients, 6.3% were Asian or Pacific Islander patients, and 0.5% were American Indian and Alaska Native patients ([Table 1](#)). Females made up a slightly greater proportion of those cancer cases (51.7% compared to 48.3% for males). For primary tumor sites of these mucinous CRC cases, the proximal colon was most commonly involved (45.5%), followed by the distal colon (24.3%), rectum (11.3%), appendix (7.9%), and transverse colon (7.7%). Of 38970 mucinous CRCs with a known grade, 5051 were well differentiated (11.1%), 25253 were moderately differentiated (55.5%), 7703 were poorly differentiated (16.9%), and 963 were undifferentiated (2.1%). Among 44818 mucinous CRCs with a known stage, 11973 were localized (26.3%), 21436 were regional (47.1%), and 11407 were distant (25.1%).

The age-adjusted incidence of colorectal MC

The overall age-adjusted incidence of CRC decreased from 44.56/100000 in 2000 to 29.65/100000 in 2018, with the steepest decline observed between 2016 and 2018 (APC = -3.1, $P = 0.06$). The rates of mucinous CRC also showed a downward trend over the entire period, decreasing from 4.50/100000 in 2000 to 1.54/100000 in 2018. For CRC patients aged younger than 50 years, *i.e.* early-onset CRCs, the incidence rate increased 1.49% per year during 2000–2013 and 5.57% per year during 2013–2016 before declining insignificantly during 2016–2018. In contrast to that upward trend, rates of mucinous CRCs in patients younger than 50 years decreased 2.27% per year during 2000–2018 ([Figure 2](#)). Of all CRC cases, the proportion of MC decreased similarly during the same period, from 10.1% in 2000 to 5.1% in 2018 ([Figure 3](#)).

With regard to the sex of patients with mucinous CRC, the incidence rates of male and female patients both decreased significantly over time, with rates decreasing from 4.80/100000 in 2000 to 1.64/100000 in 2018 for males and from 4.22/100000 to 1.43/100000 for females. With respect to the race and ethnicity of patients, the age-adjusted incidence rates of mucinous CRC decreased from 4.60/100000 in 2000 to 1.56/100000 in 2018 among the White population and from 4.88/100000 to 1.68/100000 during the same period among the Black population. The rates for the American Indian and Alaska Native population and the Asian or Pacific Islander population also decreased, with APCs of 6.70 and 5.51, respectively ([Supplementary Figure 1](#)).

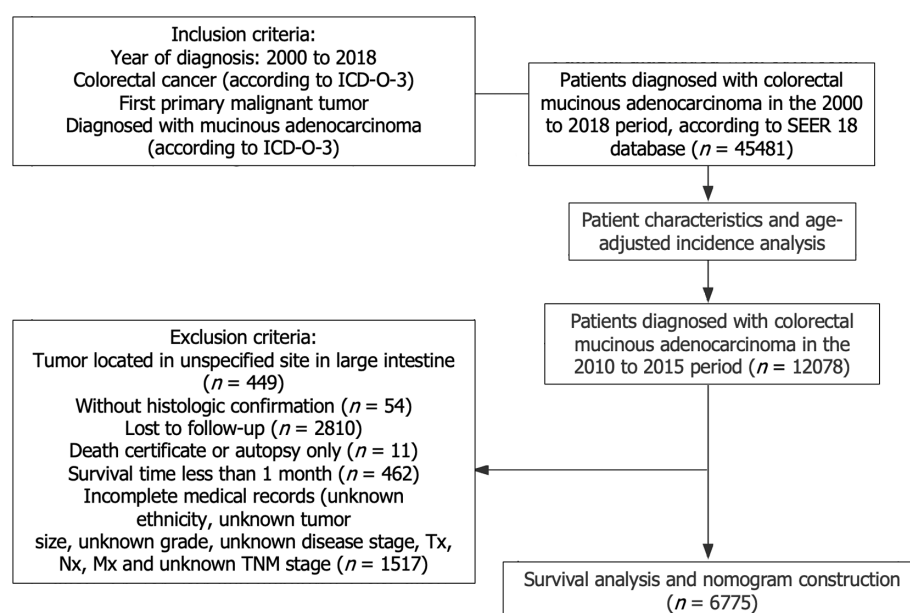
Table 1 Baseline clinicopathological characteristics of mucinous colorectal adenocarcinoma

Variable	<i>n</i>	% among 45481 total
Age in yr		
15-39	1865	4.1
40-54	7816	17.2
55-69	14499	31.9
≥ 70	21301	46.8
Sex		
Male	21976	48.3
Female	23505	51.7
Race		
White	37134	81.6
Black	5099	11.2
Asian or Pacific Islander	2865	6.3
American Indian and Alaska Native	249	0.5
Unknown	134	0.3
Marital status		
Single	6476	14.2
Married	24100	53.0
Other ¹	14905	32.8
Tumor site		
Proximal colon	20714	45.5
Transverse colon	3510	7.7
Distal colon	11065	24.3
Rectum	5149	11.3
Appendix	3572	7.9
Large intestine, unspecified	1471	3.2
Grade ²		
1	5051	11.1
2	25253	55.5
3	7703	16.9
4	963	2.1
Unknown	6511	14.3
Disease stage		
<i>In situ</i>	2	0.0
Localized	11973	26.3
Regional	21436	47.1
Distant	11407	25.1
Unknown/unstaged	663	1.5
Surgery		
Yes	41667	91.6
No/Unknown	3814	8.4
Radiation		

Yes	4865	10.7
No/Unknown	40616	89.3
Chemotherapy		
Yes	19199	42.2
No/Unknown	26282	57.8

¹Separated, divorced, widowed, or unknown marital status;

²I: Well differentiated, II: Moderately differentiated, III: Poorly differentiated, and IV: Undifferentiated.



DOI: 10.4251/wjgo.v15.i8.1461 Copyright ©The Author(s) 2023.

Figure 1 Flowchart of the study design and patient selection. ICD-O-3: International Classification of Diseases for Oncology, Third Edition; SEER: Surveillance, Epidemiology, and End Results.

When stratified by age, declining incidence rates of mucinous CRC were observed among all age groups. The highest mucinous CRC rate was observed in patients aged ≥ 70 years, which fell from 26.96/100000 in 2000 to 7.36/100000 in 2018, with the steepest drop occurring during 2004-2007. In the 55-year-olds to 69-year-olds, mucinous CRC rates decreased from 10.66/100000 to 3.27/100000 during the entire period, with the steepest drop occurring during 2005-2009. Rates decreased 2.72%/year from 2.73/100000 in 2000 to 1.72/100000 in 2018 in the 40-year-olds to 54-year-olds and decreased 1.83%/year from 0.36/100000 to 0.25/100000 in the 15-year-olds to 39-year-olds. With regard to rates of mucinous CRCs in different anatomic subsites, MC was most commonly observed in the proximal colon, followed by the distal colon and rectum. The rates of mucinous CRCs in the proximal colon decreased 6.5%/year from 2.14/100000 in 2000 to 0.66/100000 in 2018. The rates of mucinous CRCs in the distal colon decreased from 1.20/100000 in 2000 to 0.34/100000 in 2018, with the steepest drop occurring during 2005-2008. The incidence of mucinous CRCs located in the transverse colon and rectum also showed a downward trend, presenting a sharp contrast to the increasing incidence of appendiceal MC, which increased from 0.14/100000 in 2000 to 0.24/100000 in 2018 (Figure 4).

Univariate and multivariate Cox analyses of the risk factors for OS

A total of 6775 patients were included in this process. Among them, 4742 were randomly allocated to the training cohort, and 2033 were randomly allocated to the validation cohort (Supplementary Table 1). We performed our analysis based on the training cohort. Univariate and multivariate Cox regression models were chosen to explore the independent prognostic risk factors for 1-year, 3-year, and 5-year OS for patients with mucinous CRC during the follow-up. Variables found to be significantly associated with OS were further applied in the multivariate Cox regression analysis. By univariate Cox regression analysis, age, race, tumor site, tumor size, grade, disease stage, T stage, N stage, M stage, surgery, and chemotherapy were identified to be significantly associated with OS. Statistical significance of age, race, tumor site, T stage, N stage, M stage, surgery, and chemotherapy persisted during the multivariate Cox regression analysis. In particular, elderly patients (aged 40 years to 69 years: HR, 1.28; 95%CI: 1.00-1.64; ≥ 70 years: HR, 2.41; 95%CI: 1.88-3.08), Black patients (HR, 1.26; 95%CI: 1.11-1.43), patients with T3 stage (HR, 1.37; 95%CI: 1.03-1.83) or T4 stage (HR, 2.28; 95%CI: 1.68-3.08), patients with lymph node metastasis (N1 stage: HR, 1.72; 95%CI: 1.51-1.97; N2 stage: HR, 2.58; 95%CI: 2.25-2.96), patients with distant metastasis (HR, 2.67; 95%CI: 2.01-3.55), patients without surgery (HR, 4.82; 95%CI:

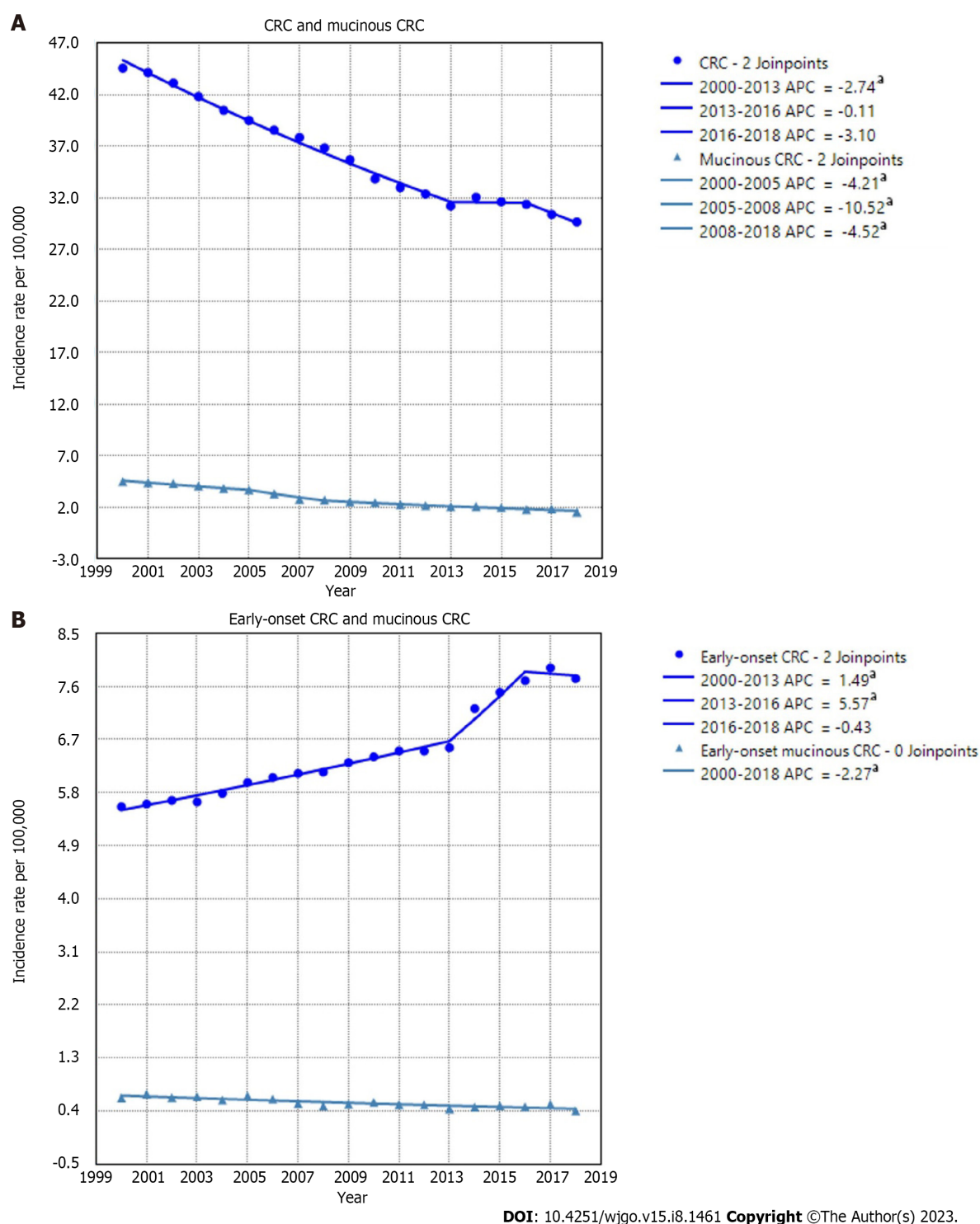


Figure 2 Incidence rate of colorectal cancer and mucinous colorectal cancer and the rate of early-onset colorectal cancer and early-onset colorectal cancer with a mucinous histology. ^aThe annual percent change (APC) is significantly different from zero at $\alpha = 0.05$. CRC: Colorectal cancer; Early-onset CRC: CRC cases in patients younger than 50 years.

3.57-6.51), and patients without chemotherapy (HR, 1.58; 95%CI: 1.42-1.76) had poorer OS. Compared with tumors primarily located in the proximal colon, tumors located in the distal colon were associated with poorer OS (HR, 1.15; 95%CI: 1.04-1.28), whereas tumors located in the appendix suggested better survival (HR, 0.58; 95%CI: 0.47-0.72). Details are presented in [Table 2](#).

Nomogram construction and validation

A nomogram model was constructed to predict the 1-year, 3-year, and 5-year OS of patients with mucinous CRC according to multivariate Cox regression analysis ([Figure 5](#)). Each vector of these variables was assigned a point value, and the cumulative point score of all variables for a particular individual was matched to the probability of survival.

Table 2 Univariate and multivariate Cox regression analyses of predictive factors associated with overall survival in mucinous adenocarcinoma

Variables	Subgroup	Univariable		Multivariable	
		Hazard ratio	P value	Hazard ratio	P value
Age in yr	< 40	Reference	< 0.001	Reference	< 0.001
	40-69	1.15 (0.90-1.46)		1.28 (1.00-1.64)	
	≥ 70	1.85 (1.45-2.35)		2.41 (1.88-3.08)	
Sex	Male	Reference	0.211	/	
	Female	1.06 (0.97-1.15)			
Race	White	Reference	0.035	Reference	< 0.001
	Black	1.15 (1.02-1.30)		1.26 (1.11-1.43)	
	Other ¹	0.90 (0.75-1.08)		0.92 (0.77-1.10)	
Tumor site	Proximal colon	Reference	< 0.001	Reference	< 0.001
	Transverse colon	0.93 (0.79-1.09)		0.88 (0.75-1.04)	
	Distal colon	1.17 (1.05-1.29)		1.15 (1.04-1.28)	
	Rectum	0.92 (0.79-1.08)		1.14 (0.97-1.34)	
	Appendix	0.74 (0.61-0.88)		0.58 (0.47-0.72)	
Tumor size	≤ 30	Reference	< 0.001	Reference	0.625
	31-59	1.41 (1.24-1.61)		1.06 (0.92-1.22)	
	≥ 60	1.57 (1.38-1.79)		1.07 (0.93-1.23)	
Grade	I	Reference	< 0.001	Reference	0.073
	II	1.20 (1.04-1.39)		1.11 (0.95-1.30)	
	III	1.71 (1.45-2.02)		1.23 (1.03-1.46)	
	IV	2.07 (1.67-2.57)		1.26 (1.01-1.58)	
Disease stage	Localized	Reference	< 0.001	Reference	0.105
	Regional	1.49 (1.33-1.67)		0.90 (0.77-1.06)	
	Distant	4.32 (3.83-4.88)		1.16 (0.85-1.60)	
T stage	T1	Reference	< 0.001	Reference	< 0.001
	T2	0.86 (0.63-1.16)		0.99 (0.72-1.35)	
	T3	1.41 (1.08-1.85)		1.37 (1.03-1.83)	
	T4	2.67 (2.03-3.50)		2.28 (1.68-3.08)	
N stage	N0	Reference	< 0.001	Reference	< 0.001
	N1	1.63 (1.47-1.81)		1.72 (1.51-1.97)	
	N2	2.90 (2.62-3.21)		2.58 (2.25-2.96)	
M stage	M0	Reference	< 0.001	Reference	< 0.001
	M1	3.75 (3.42-4.11)		2.67 (2.01-3.55)	
Surgery	Yes	Reference	< 0.001	Reference	< 0.001
	No/Unknown	5.08 (3.83-6.73)		4.82 (3.57-6.51)	
Radiation	Yes	Reference	0.764	/	
	No/Unknown	1.02 (0.89-1.17)			
Chemotherapy	Yes	Reference	< 0.001	Reference	< 0.001
	No/Unknown	0.87 (0.80-0.95)		1.58 (1.42-1.76)	

¹Defined as the Asian/Pacific Islander and American Indian/Alaska Native.

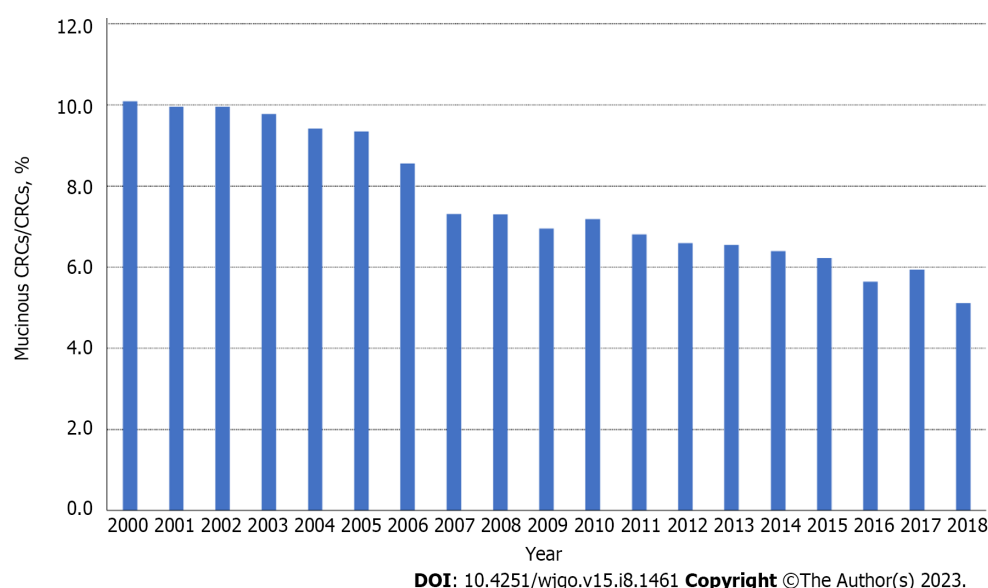


Figure 3 Proportion of mucinous colorectal cancer among all colorectal cancer cases. CRC: Colorectal cancer.

Supplementary Table 2 shows the specific value of each variable. The nomogram had a C-index of 0.730, which was internally validated with a C-index of 0.728 using the validation cohort. The AUCs of the nomogram predicting 1-year, 3-year, and 5-year OS were 0.778, 0.778, and 0.768, respectively. The discrimination performance was validated in the validation cohort with an AUC of 0.805 in predicting the 1-year OS, an AUC of 0.779 in predicting the 3-year OS, and an AUC of 0.760 in predicting the 5-year survival (Figure 6). Additionally, calibration curves were plotted to assess the accuracy of the nomogram model, which presented a good alignment between the nomogram prediction and the actual risk (Supplementary Figure 2).

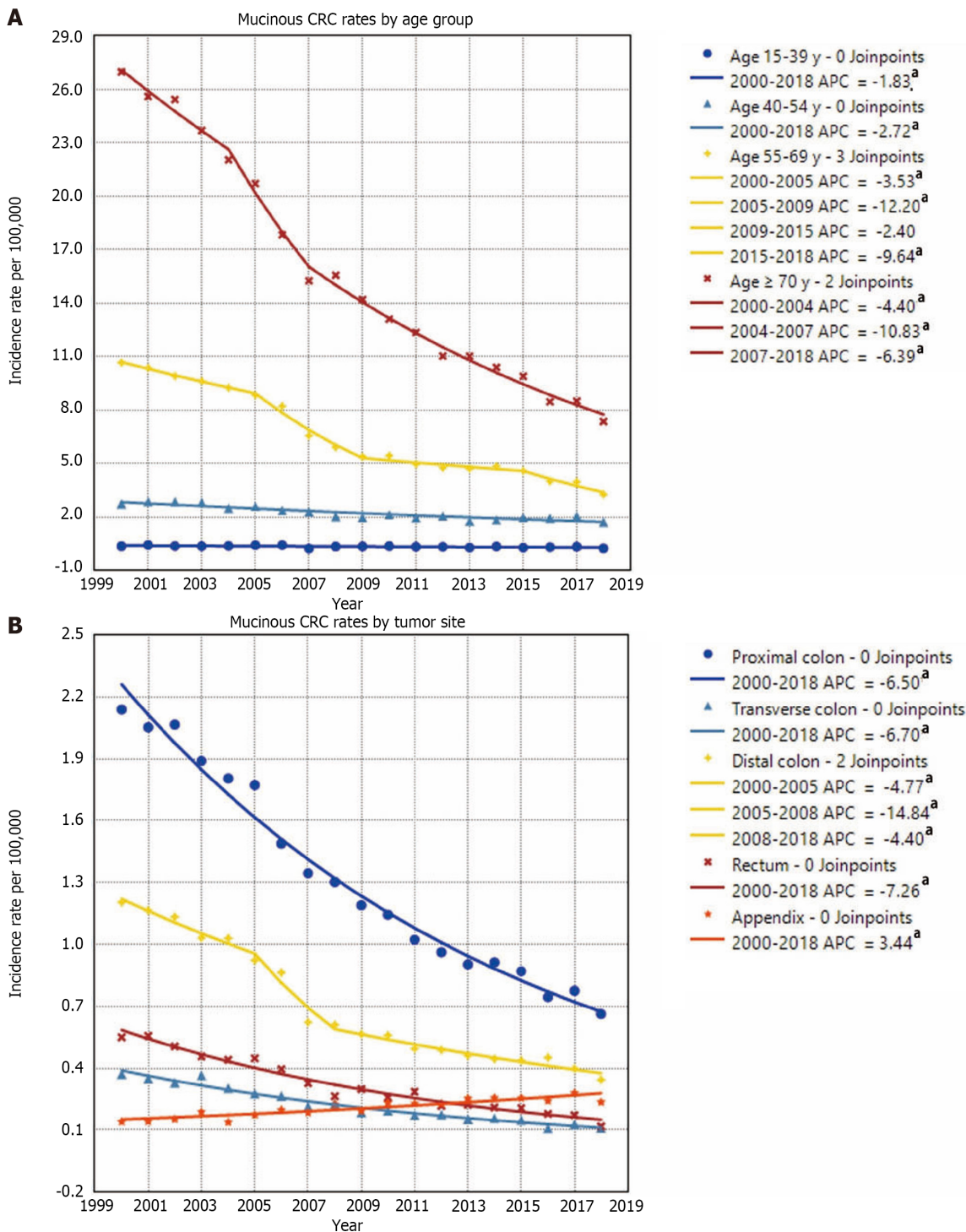
To estimate the survival probability of patients with different levels of those factors, Kaplan-Meier survival curves were plotted. Significant decreases were observed in patients aged ≥ 70 years (1-year, 3-year, and 5-year OS rates: 84.4%, 63.7%, and 50.5%, respectively, Figure 7A), with tumors located in the distal colon (1-year, 3-year, and 5-year OS rates: 89.3%, 65.4%, and 50.8%, respectively, Figure 7B), Black race (1-year, 3-year, and 5-year OS rates: 87.5%, 66.4%, and 54.8%, respectively, Supplementary Figure 3A), and T4 stage (1-year, 3-year, and 5-year OS rates: 81.8%, 51.7%, and 39.8%, respectively, Supplementary Figure 3B). Patients diagnosed with N2 and M1 stage also had a lower survival probability (Supplementary Figure 3C and D).

DISCUSSION

By using a national and population-based dataset in this study, we evaluated the incidence trend of mucinous CRC and then constructed a nomogram to predict OS. We found that the age-adjusted incidence rate of mucinous colorectal adenocarcinoma decreased yearly from 2000 to 2018, both in male and female patients and among all age groups. However, a previous study reported that the incidence of mucinous CRC remained stable in earlier time periods, and others reported almost unchanged mucinous CRC rates in males but a slight increase in female incidence[3,9]. The incidence of overall CRC has declined in recent years, mainly because of the enhanced practices of CRC screening and colonoscopic polypectomy[10], which could probably explain the recent decrease in mucinous CRC rates. In addition, the proportion of MCs among all CRC cases also decreased over time from approximately 10% in 2000 to 5% in 2018.

While previous studies reported that MC was more commonly found in younger patients than nonmucinous CRC[9, 11], our results indicated that in contrast to the upward trend in the incidence of overall early-onset CRC, the incidence of early-onset CRC with a mucinous histology decreased over the study period. However, a previous study stratifying early-onset CRC incidence by histologic subtype reported that the incidence of adenocarcinoma increased in most age subgroups, with the steepest subsite increase observed in rectal adenocarcinoma, and carcinoid rate increases outpaced adenocarcinoma rates in all age groups. Hence, early-onset CRC rate increases seemed to be driven by other adenocarcinoma subtypes and rectal carcinoid tumors in place of MC[12].

Mucinous CRC rates stratified by anatomic subsites showed a decreasing trend among all subgroups apart from the appendix. In agreement with previous studies, our results demonstrated that the incidence of appendiceal MC in the United States has been increasing over time, partly due to the improved detection and appreciation of the disease entity [13,14].

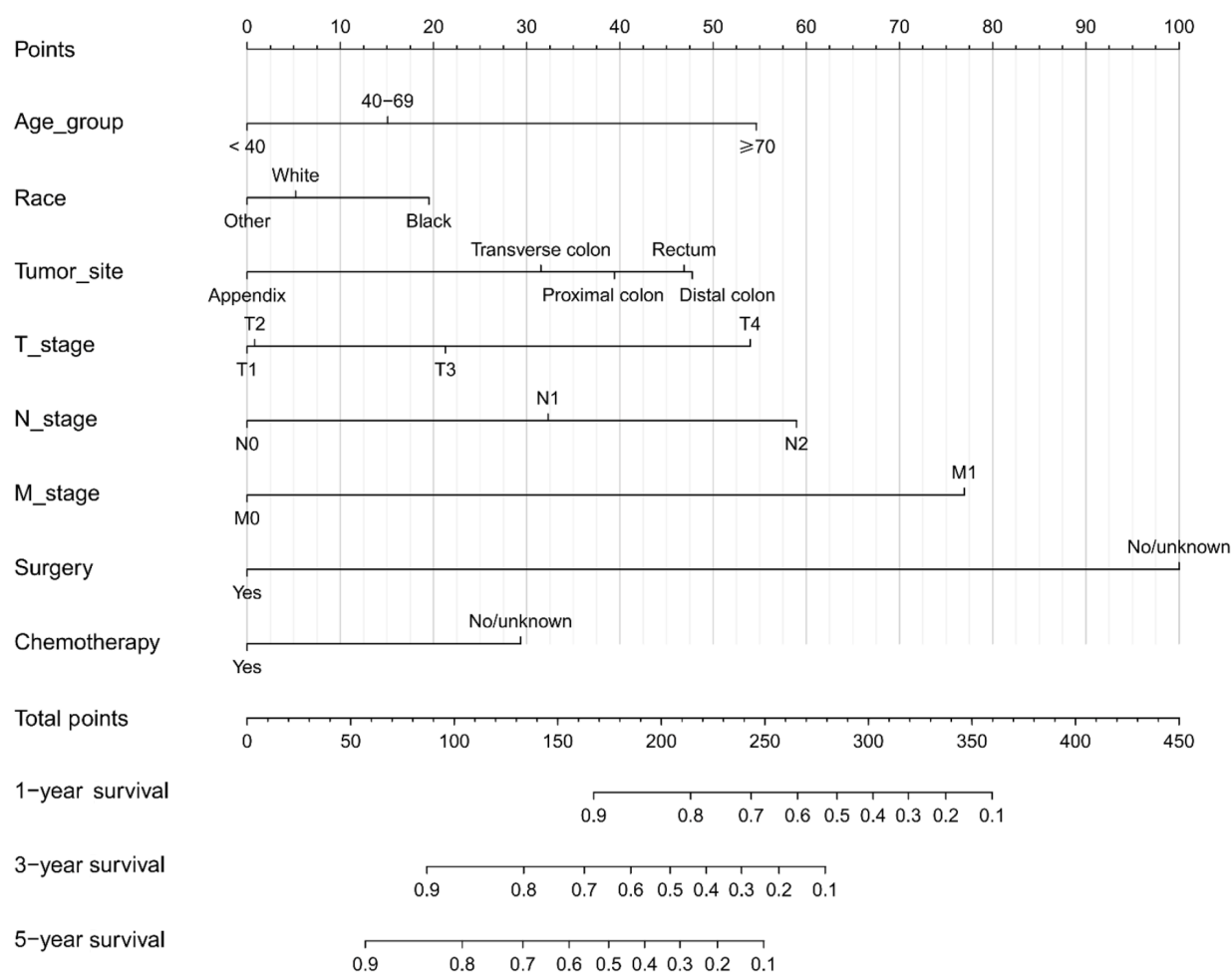


DOI: 10.4251/wjgo.v15.i8.1461 Copyright ©The Author(s) 2023.

Figure 4 Age-adjusted incidence rate of mucinous colorectal cancer by age group and primary tumor site. ^aThe annual percent change (APC) is significantly different from zero at alpha = 0.05. CRC: Colorectal cancer.

In the present study, the results demonstrated that MCs were more commonly found in the proximal colon (45.5%). It was reported that MCs were associated with higher mucin 2 expression and high-frequency microsatellite instability, which was partly due to mutations of genes in the RAS/MAPK pathway. Furthermore, mucin 2 and microsatellite instability were associated with proximal location[15,16]. In terms of tumor differentiation and the extent of disease, the largest proportion of MCs were moderately differentiated (55.5%) and were diagnosed at a regional stage (47.1%), similar to previous findings of MCs in the colon and rectum. Nevertheless, MCs in the appendix were more commonly well differentiated but most often diagnosed at a distant stage[17,18].

To date, the prognostic significance of MC remains elusive. Studies comparing the survival and prognosis of mucinous CRC and nonmucinous CRC have shown conflicting results. A few studies found that patients with mucinous CRC had a poorer prognosis than their nonmucinous counterparts[19,20], while others indicated that MC was not an independent



DOI: 10.4251/wjgo.v15.i8.1461 Copyright ©The Author(s) 2023.

Figure 5 Nomogram for predicting the 1-year, 3-year, and 5-year overall survival in mucinous colorectal cancer.

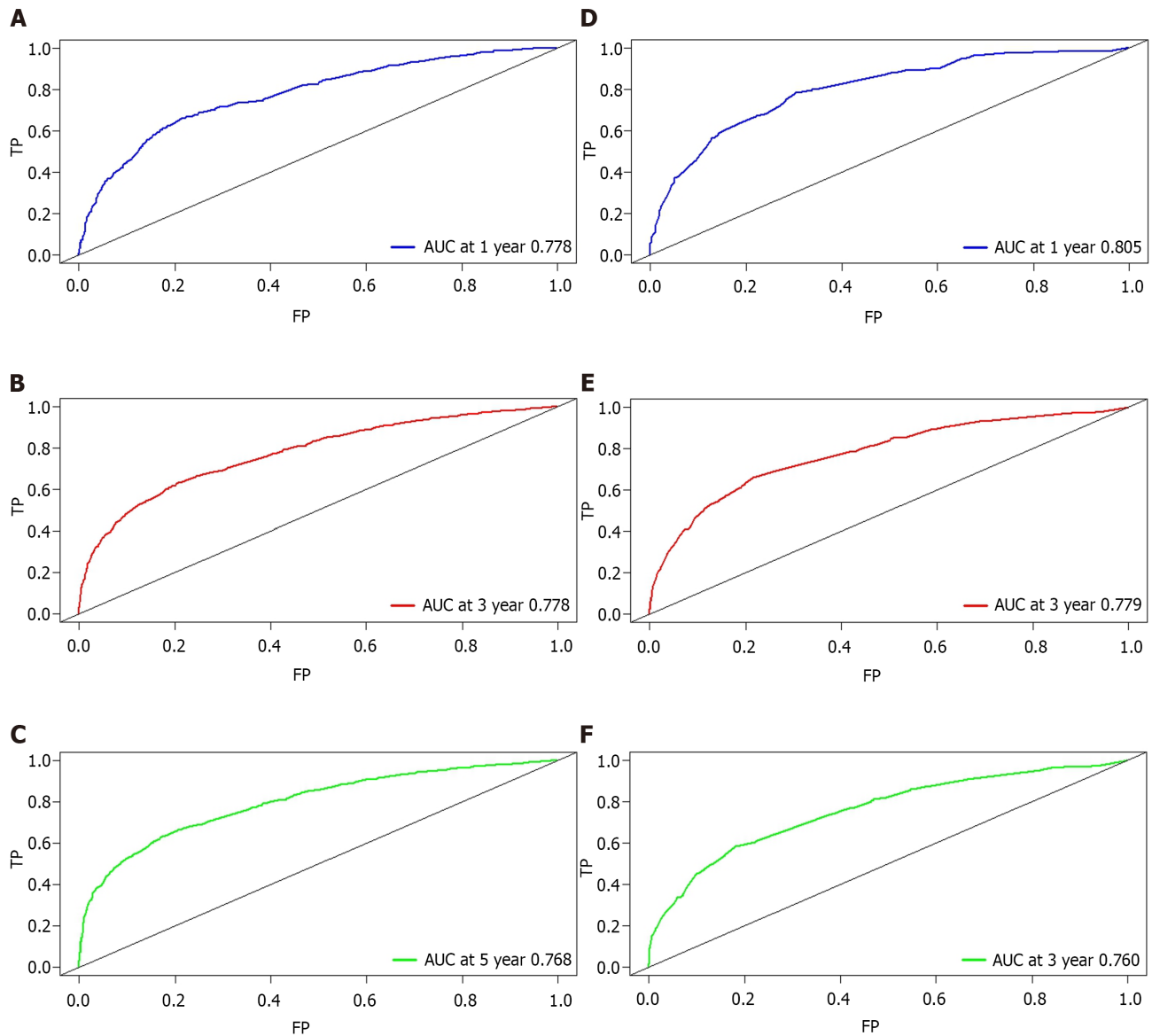
prognostic factor[21]. Moreover, some research reported that the survival disadvantage of MC was observed only in specific anatomic subsites[22-24]. Accordingly, it seemed to portend that the prognosis of MC was associated with anatomic location.

During the multivariate Cox regression analysis, we found that the primary tumor site was associated with the OS of patients with mucinous CRC. Compared with MCs in the proximal colon, MCs in the appendix indicated improved survival (HR, 0.58). As a previous study reported, the survival rates of gastrointestinal MC varied by anatomic location, and the best OS was observed in the appendix. When stratified by stage and grade, MCs in the appendix had better OS than those in the colon and rectum, except for grade III/IV appendiceal MC[17]. Appendiceal MC is currently recognized as part of appendiceal mucinous neoplasms (AMNs), which are now divided into low-grade AMNs and high-grade AMNs. AMNs arise most often from low-grade AMNs and are relatively indolent in terms of biological behavior compared with CRC[25,26]. Given that tumor grade is an independent prognostic factor[25], the superior survival of AMNs compared with MCs in the colon and rectum was partly attributed to a greater proportion of well or moderately differentiated tumors.

In addition, our findings demonstrated that compared with MCs in the proximal colon, MCs in the distal colon had poorer prognosis (HR, 1.15), discordant with previous findings that tumor location was not associated with survival differences[20,27], whereas a recent study also found that a tumor site in the left-sided colon was associated with poorer prognosis (HR, 1.16)[28]. CRC is a molecularly and clinically heterogeneous disease, and a large part of its heterogeneity is driven by anatomic location. In particular, molecular and clinical disparities were observed between CRCs in the proximal colon and in the distal colon[29]. Further evaluation of the prognostic significance of tumor location entails studies that focus on the underlying mechanisms.

Other demographic characteristics like age and race were also associated with patient survival. Older age at diagnosis portended poor prognosis. During the univariate Cox analysis, advanced tumor grade and disease stage indicated inferior survival but were not significantly associated with OS in multivariate Cox analysis. Surgery as a protective factor for MC patients was the most valuable factor in the nomogram, underscoring the importance of surgical treatment for patients with mucinous CRC.

There were still some limitations in our study. First, this is a retrospective study having inherent selection bias. Second, although the SEER program covers a large population, some potential prognostic factors, such as Ki-67, are not included in the database. Another limitation pertains to the accuracy of data related to appendiceal MC because pathologic classi-



DOI: 10.4251/wjgo.v15.i8.1461 Copyright ©The Author(s) 2023.

Figure 6 Receiver operating characteristics curve and area under the receiver operating characteristic curve. A: Predicting 1-year overall survival (OS) in the training cohort; B: Predicting 3-year OS in the training cohort; C: Predicting 5-year OS in the training cohort; D: Predicting 1-year OS in the validation cohort; E: Predicting 3-year OS in the validation cohort; F: Predicting 5-year OS in the validation cohort. AUC: Area under the receiver operating characteristics curve; FP: False positive; TP: True positive.

fication and grading systems for AMNs have undergone significant changes over time. Finally, the lack of an external validation cohort limits the generalizability and application of this nomogram. Future research studying the underlying mechanisms of those prognostic risk factors is warranted.

CONCLUSION

In this population-based study, we explored the epidemiologic characteristics of mucinous CRC and found that the incidence of mucinous CRC decreased in both young and older patients. When stratified by anatomic location, incidence rates declined in almost all anatomic subgroups except for MCs in the appendix. In addition, we predicted the 1-year, 3-year, and 5-year OS of patients with MCs by developing a nomogram that could integrate T, N, and M stage with other fundamental characteristics, such as age, race, and primary tumor site. The nomogram model was internally validated and showed good performance.

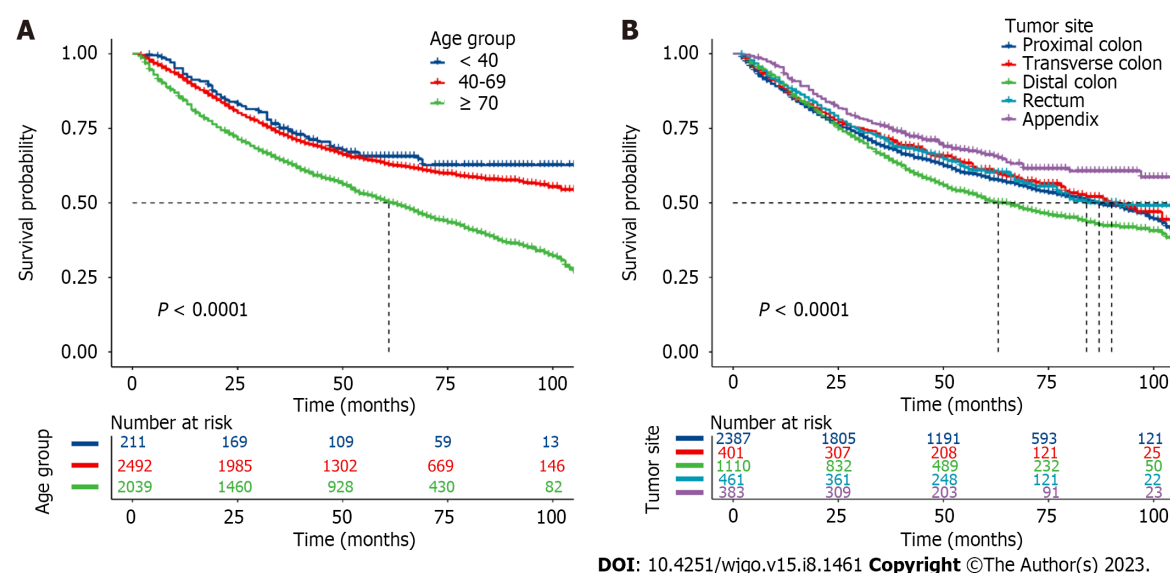


Figure 7 Kaplan–Meier survival curves for predicting overall survival for patients with mucinous colorectal cancer. A: Survival probability over time by age group; B: Survival probability over time by tumor site.

ARTICLE HIGHLIGHTS

Research background

Mucinous adenocarcinoma (MC) is a distinct histologic subtype of colorectal cancer (CRC), which differs from nonmucinous CRC in terms of clinicopathological characteristics and genetic features.

Research motivation

There are limited data about epidemiologic characteristics of MC, and little is known about the risk factors associated with the survival rates.

Research objectives

In this study, we aimed to determine the epidemiologic and clinicopathological characteristics of mucinous CRC.

Research methods

We conducted a population-based analysis of the epidemiologic and clinicopathological characteristics of mucinous CRC on the basis of data extracted from the National Cancer Institute's Surveillance, Epidemiology, and End Results Program.

Research results

Rates of mucinous CRC decreased from 4.50/100000 in 2000 to 1.54/100000 in 2018. Rates of mucinous CRCs in patients aged ≤ 50 years decreased 2.27%/year during 2000-2018, in sharp contrast to the upward trend in early-onset CRC. Incidence of appendiceal MCs increased from 0.14/100000 in 2000 to 0.24/100000 in 2018. On multivariable Cox analyses, age, race, tumor site, T stage, N stage, M stage, surgery, and chemotherapy were associated with overall survival. A nomogram was developed based on these factors, and the area under the curve for 1-year, 3-year, and 5-year overall survival in the training cohort was 0.778, 0.778 and 0.768, respectively, and was 0.805, 0.779 and 0.760 in the validation cohort, respectively.

Research conclusions

We found that the incidence of mucinous CRC decreased both in young and older patients. However, the incidence of appendiceal MCs continued to increase. During the survival analysis, in addition to the TNM tumor stages, we found that age, race, tumor site, surgery, and chemotherapy were also significantly associated with survival. A nomogram based on these factors as well as the T, N, and M stages showed a good predictive performance.

Research perspectives

We laid a foundation for future research exploring the prognostic implications of mucinous colorectal adenocarcinoma.

ACKNOWLEDGEMENTS

The authors of this study have no contribution to SEER data collection. We would like to thank the SEER database for its

open access.

FOOTNOTES

Author contributions: Jiang J, Tang XW, and Huang S contributed equally to this work; Luo B, Hu N, Tang XW, and Chen Y designed the research study; Ren WS and Jiang J performed the data extraction; Jiang J, Tang XW, and Huang S analyzed the data and wrote the manuscript; Peng Y, Yang WX, and Lü MH revised the manuscript; All authors read and approved the final manuscript.

Supported by Science & Technology Department of Sichuan Province, No. 2021JDTD0003; and Scientific Research Cooperation Project of Suining First People's Hospital and the Affiliated Hospital of Southwest Medical University, No. 2021SNXNYD05.

Institutional review board statement: This research project falls under the category of research conducted using lawfully obtained public data or data generated through observation without interfering with public behavior. Review and informed consent were exempted.

Informed consent statement: All data were downloaded from the "SEER Database," and informed consents were exempted.

Conflict-of-interest statement: The authors declare that the research was conducted in the absence of any commercial or financial relationships that could be construed as a potential conflict of interest.

Data sharing statement: No additional data are available.

Open-Access: This article is an open-access article that was selected by an in-house editor and fully peer-reviewed by external reviewers. It is distributed in accordance with the Creative Commons Attribution NonCommercial (CC BY-NC 4.0) license, which permits others to distribute, remix, adapt, build upon this work non-commercially, and license their derivative works on different terms, provided the original work is properly cited and the use is non-commercial. See: <https://creativecommons.org/licenses/by-nc/4.0/>

Country/Territory of origin: China

ORCID number: Jiao Jiang 0000-0002-4821-3262; Xiao-Wei Tang 0000-0001-6064-0526; Shu Huang 0000-0001-7284-469X; Nan Hu 0000-0001-6733-0037; Yuan Chen 0009-0008-1496-2979; Bei Luo 0009-0009-8385-0919; Wen-Sen Ren 0000-0003-4078-5933; Yan Peng 0000-0002-4007-0850; Wei-Xing Yang 0009-0004-5903-5563; Mu-Han Lü 0000-0002-0527-3695.

S-Editor: Li L

L-Editor: Filipodia

P-Editor: Zhang XD

REFERENCES

- Bray F, Ferlay J, Soerjomataram I, Siegel RL, Torre LA, Jemal A. Global cancer statistics 2018: GLOBOCAN estimates of incidence and mortality worldwide for 36 cancers in 185 countries. *CA Cancer J Clin* 2018; **68**: 394-424 [PMID: 30207593 DOI: 10.3322/caac.21492]
- Bosman FT, Carneiro F, Hruban RH and Theise ND. WHO Classification of Tumours of the Digestive System. 4th ed. Lyon: International Agency for Research on Cancer, 2010.
- Kang H, O'Connell JB, Maggard MA, Sack J, Ko CY. A 10-year outcomes evaluation of mucinous and signet-ring cell carcinoma of the colon and rectum. *Dis Colon Rectum* 2005; **48**: 1161-1168 [PMID: 15868237 DOI: 10.1007/s10350-004-0932-1]
- You YN, Xing Y, Feig BW, Chang GJ, Cormier JN. Young-onset colorectal cancer: is it time to pay attention? *Arch Intern Med* 2012; **172**: 287-289 [PMID: 22157065 DOI: 10.1001/archinternmed.2011.602]
- Patel SG, Karlitz JJ, Yen T, Lieu CH, Boland CR. The rising tide of early-onset colorectal cancer: a comprehensive review of epidemiology, clinical features, biology, risk factors, prevention, and early detection. *Lancet Gastroenterol Hepatol* 2022; **7**: 262-274 [PMID: 35090605 DOI: 10.1016/S2468-1253(21)00426-X]
- Greene FL, Sobin LH. The staging of cancer: a retrospective and prospective appraisal. *CA Cancer J Clin* 2008; **58**: 180-190 [PMID: 18460593 DOI: 10.3322/CA.2008.0001]
- Xu Z, Wang L, Dai S, Chen M, Li F, Sun J, Luo F. Epidemiologic Trends of and Factors Associated With Overall Survival for Patients With Gastroenteropancreatic Neuroendocrine Tumors in the United States. *JAMA Netw Open* 2021; **4**: e2124750 [PMID: 34554237 DOI: 10.1001/jamanetworkopen.2021.24750]
- Balachandran VP, Gonen M, Smith JJ, DeMatteo RP. Nomograms in oncology: more than meets the eye. *Lancet Oncol* 2015; **16**: e173-e180 [PMID: 25846097 DOI: 10.1016/S1470-2045(14)71116-7]
- Du W, Mah JT, Lee J, Sankila R, Sankaranarayanan R, Chia KS. Incidence and survival of mucinous adenocarcinoma of the colorectum: a population-based study from an Asian country. *Dis Colon Rectum* 2004; **47**: 78-85 [PMID: 14719155 DOI: 10.1007/s10350-003-0014-9]
- Edwards BK, Noone AM, Mariotto AB, Simard EP, Boscoe FP, Henley SJ, Jemal A, Cho H, Anderson RN, Kohler BA, Ehemann CR, Ward EM. Annual Report to the Nation on the status of cancer, 1975-2010, featuring prevalence of comorbidity and impact on survival among persons with lung, colorectal, breast, or prostate cancer. *Cancer* 2014; **120**: 1290-1314 [PMID: 24343171 DOI: 10.1002/cncr.28509]
- Li J, Yang L, Bai F, Cai Y, Zhang J, Wu Z, Fu Y, Deng Y. Clinicopathological, molecular features and prognosis of colorectal cancer with mucinous component. *Future Oncol* 2021; **17**: 1351-1362 [PMID: 33331169 DOI: 10.2217/fon-2020-1055]
- Montminy EM, Zhou M, Maniscalco L, Abualkhair W, Kim MK, Siegel RL, Wu XC, Itzkowitz SH, Karlitz JJ. Contributions of Adenocarcinoma and Carcinoid Tumors to Early-Onset Colorectal Cancer Incidence Rates in the United States. *Ann Intern Med* 2021; **174**:

- 157-166 [PMID: [33315473](#) DOI: [10.7326/M20-0068](#)]
- 13 **Xie GD**, Liu YR, Jiang YZ, Shao ZM. Epidemiology and survival outcomes of mucinous adenocarcinomas: A SEER population-based study. *Sci Rep* 2018; **8**: 6117 [PMID: [29666453](#) DOI: [10.1038/s41598-018-24540-7](#)]
- 14 **Shaib WL**, Goodman M, Chen Z, Kim S, Brucher E, Bekaii-Saab T, El-Rayes BF. Incidence and Survival of Appendiceal Mucinous Neoplasms: A SEER Analysis. *Am J Clin Oncol* 2017; **40**: 569-573 [PMID: [26270447](#) DOI: [10.1097/COC.0000000000000210](#)]
- 15 **Reynolds IS**, Furney SJ, Kay EW, McNamara DA, Prehn JHM, Burke JP. Meta-analysis of the molecular associations of mucinous colorectal cancer. *Br J Surg* 2019; **106**: 682-691 [PMID: [30945755](#) DOI: [10.1002/bjs.11142](#)]
- 16 **Luo C**, Cen S, Ding G, Wu W. Mucinous colorectal adenocarcinoma: clinical pathology and treatment options. *Cancer Commun (Lond)* 2019; **39**: 13 [PMID: [30922401](#) DOI: [10.1186/s40880-019-0361-0](#)]
- 17 **Zong Z**, Luo Y, Ying H, Wang A, Li H, Yi C. Trends of incidence and survival in patients with gastrointestinal mucinous adenocarcinoma. *Oncol Lett* 2018; **16**: 5791-5798 [PMID: [30344730](#) DOI: [10.3892/ol.2018.9394](#)]
- 18 **Benesch MGK**, Mathieson A. Epidemiology of Mucinous Adenocarcinomas. *Cancers (Basel)* 2020; **12** [PMID: [33143115](#) DOI: [10.3390/cancers12113193](#)]
- 19 **Verhulst J**, Ferdinande L, Demetter P, Ceelen W. Mucinous subtype as prognostic factor in colorectal cancer: a systematic review and meta-analysis. *J Clin Pathol* 2012; **65**: 381-388 [PMID: [22259177](#) DOI: [10.1136/jclinpath-2011-200340](#)]
- 20 **Li ZP**, Liu XY, Kao XM, Chen YT, Han SQ, Huang MX, Liu C, Tang XY, Chen YY, Xiang D, Huang YD, Lei ZJ, Chu XY. Clinicopathological characteristics and prognosis of colorectal mucinous adenocarcinoma and nonmucinous adenocarcinoma: a surveillance, epidemiology, and end results (SEER) population-based study. *Ann Transl Med* 2020; **8**: 205 [PMID: [32309352](#) DOI: [10.21037/atm.2020.01.52](#)]
- 21 **Warschke R**, Tarantino I, Huttner FJ, Schmied BM, Guller U, Diener MK, Ulrich A. Predictive value of mucinous histology in colon cancer: a population-based, propensity score matched analysis. *Br J Cancer* 2016; **114**: 1027-1032 [PMID: [26977857](#) DOI: [10.1038/bjc.2016.57](#)]
- 22 **Lan YT**, Chang SC, Lin PC, Lin CC, Lin HH, Huang SC, Lin CH, Liang WY, Chen WS, Jiang JK, Lin JK, Yang SH. Clinicopathological and Molecular Features of Colorectal Cancer Patients With Mucinous and Non-Mucinous Adenocarcinoma. *Front Oncol* 2021; **11**: 620146 [PMID: [33738258](#) DOI: [10.3389/fonc.2021.620146](#)]
- 23 **Hugen N**, Verhoeven RH, Radema SA, de Hingh IH, Pruijt JF, Nagtegaal ID, Lemmens VE, de Wilt JH. Prognosis and value of adjuvant chemotherapy in stage III mucinous colorectal carcinoma. *Ann Oncol* 2013; **24**: 2819-2824 [PMID: [24057984](#) DOI: [10.1093/annonc/mdt378](#)]
- 24 **Patel C**, Behring M, Al Diffalha S, Dhall D, Lee G, Shanmugam C, Grizzle WE, Manne U. Immunophenotypic profiles and prognosis for colorectal mucinous adenocarcinomas are dependent on anatomic location. *Cancer Med* 2023; **12**: 9637-9643 [PMID: [36916704](#) DOI: [10.1002/cam4.5803](#)]
- 25 **Ahadi M**, Sokolova A, Brown I, Chou A, Gill AJ. The 2019 World Health Organization Classification of appendiceal, colorectal and anal canal tumours: an update and critical assessment. *Pathology* 2021; **53**: 454-461 [PMID: [33461799](#) DOI: [10.1016/j.pathol.2020.10.010](#)]
- 26 **Shaib WL**, Assi R, Shamseddine A, Alese OB, Staley C 3rd, Memis B, Adsay V, Bekaii-Saab T, El-Rayes BF. Appendiceal Mucinous Neoplasms: Diagnosis and Management. *Oncologist* 2017; **22**: 1107-1116 [PMID: [28663356](#) DOI: [10.1634/theoncologist.2017-0081](#)]
- 27 **Ott C**, Gerken M, Hirsch D, Fest P, Fichtner-Feigl S, Munker S, Schnoy E, Stroszczyński C, Vogelhuber M, Herr W, Evert M, Reng M, Schlitt HJ, Klinkhammer-Schalke M, Teufel A. Advanced Mucinous Colorectal Cancer: Epidemiology, Prognosis and Efficacy of Chemotherapeutic Treatment. *Digestion* 2018; **98**: 143-152 [PMID: [29870979](#) DOI: [10.1159/000487710](#)]
- 28 **Wu Q**, Zhang S, Wang H, Zeng Y, Yang W, Pan W, Hong G, Gao W. A prognostic nomogram for predicting overall survival in colorectal mucinous adenocarcinoma patients based on the SEER database. *Biomol Biomed* 2023; **23**: 517-526 [PMID: [36373623](#) DOI: [10.17305/bjbms.2022.8297](#)]
- 29 **Missiaglia E**, Jacobs B, D'Ario G, Di Narzo AF, Sonesson C, Budinska E, Popovici V, Vecchione L, Gerster S, Yan P, Roth AD, Klingbiel D, Bosman FT, Delorenzi M, Tejpar S. Distal and proximal colon cancers differ in terms of molecular, pathological, and clinical features. *Ann Oncol* 2014; **25**: 1995-2001 [PMID: [25057166](#) DOI: [10.1093/annonc/mdu275](#)]



Published by **Baishideng Publishing Group Inc**
7041 Koll Center Parkway, Suite 160, Pleasanton, CA 94566, USA

Telephone: +1-925-3991568

E-mail: bpgoffice@wjgnet.com

Help Desk: <https://www.f6publishing.com/helpdesk>

<https://www.wjgnet.com>

