

World Journal of *Gastrointestinal Oncology*

World J Gastrointest Oncol 2024 January 15; 16(1): 1-250



EDITORIAL

- 1 Present situation and prospect of immunotherapy for unresectable locally advanced esophageal cancer during peri-radiotherapy
Wang FM, Mo P, Yan X, Lin XY, Fu ZC
- 8 Early gastric cancer recurrence after endoscopic submucosal dissection: Not to be ignored!
Zeng Y, Yang J, Zhang JW

REVIEW

- 13 New trends in diagnosis and management of gallbladder carcinoma
Pavlidis ET, Galanis IN, Pavlidis TE

ORIGINAL ARTICLE

Clinical and Translational Research

- 30 Mechanism of pachymic acid in the treatment of gastric cancer based on network pharmacology and experimental verification
Du YH, Zhao JJ, Li X, Huang SC, Ning N, Chen GQ, Yang Y, Nan Y, Yuan L

Retrospective Cohort Study

- 51 Trends in colorectal cancer incidence according to an increase in the number of colonoscopy cases in Korea
Kim GH, Lee YC, Kim TJ, Hong SN, Chang DK, Kim YH, Yang DH, Moon CM, Kim K, Kim HG, Kim ER

Retrospective Study

- 61 C-reactive protein to albumin ratio predict responses to programmed cell death-1 inhibitors in hepatocellular carcinoma patients
Li BB, Chen LJ, Lu SL, Lei B, Yu GL, Yu SP
- 79 Impact of propofol and sevoflurane anesthesia on cognition and emotion in gastric cancer patients undergoing radical resection
Li AH, Bu S, Wang L, Liang AM, Luo HY
- 90 Development and validation of a machine learning-based early prediction model for massive intraoperative bleeding in patients with primary hepatic malignancies
Li J, Jia YM, Zhang ZL, Liu CY, Jiang ZW, Hao ZW, Peng L
- 102 Comparative study between Embosphere® and Marine gel® as embolic agents for chemoembolization of hepatocellular carcinoma
Kim HC, Choi JW

- 110 Clinical value of oral contrast-enhanced ultrasonography in diagnosis of gastric tumors

Wang CY, Fan XJ, Wang FL, Ge YY, Cai Z, Wang W, Zhou XP, Du J, Dai DW

Observational Study

- 118 Prognostic significance and relationship of SMAD3 phospho-isoforms and VEGFR-1 in gastric cancer: A clinicopathological study

Ly SL, Guo P, Zou JR, Chen RS, Luo LY, Huang DQ

- 133 Colonoscopy plays an important role in detecting colorectal neoplasms in patients with gastric neoplasms

Liu XR, Wen ZL, Liu F, Li ZW, Liu XY, Zhang W, Peng D

Basic Study

- 144 Analysis of the potential biological value of pyruvate dehydrogenase E1 subunit β in human cancer

Rong Y, Liu SH, Tang MZ, Wu ZH, Ma GR, Li XF, Cai H

- 182 Colorectal cancer's burden attributable to a diet high in processed meat in the Belt and Road Initiative countries

Liu G, Li CM, Xie F, Li QL, Liao LY, Jiang WJ, Li XP, Lu GM

SYSTEMATIC REVIEWS

- 197 Comprehensive analysis of the role of ubiquitin-specific peptidases in colorectal cancer: A systematic review

Al-Balushi E, Al Marzouqi A, Tavoosi S, Baghsheikhi AH, Sadri A, Aliabadi LS, Salarabedi MM, Rahman SA, Al-Yateem N, Jarrahi AM, Halimi A, Ahmadvand M, Abdel-Rahman WM

META-ANALYSIS

- 214 Application of neoadjuvant chemoradiotherapy and neoadjuvant chemotherapy in curative surgery for esophageal cancer: A meta-analysis

Yuan MX, Cai QG, Zhang ZY, Zhou JZ, Lan CY, Lin JB

CASE REPORT

- 234 Emerging role of liquid biopsy in rat sarcoma virus mutated metastatic colorectal cancer: A case report

Gramaça J, Fernandes IG, Trabulo C, Gonçalves J, dos Santos RG, Baptista A, Pina I

- 244 Comprehensive evaluation of rare case: From diagnosis to treatment of a sigmoid Schwannoma: A case report

Li JY, Gao XZ, Zhang J, Meng XZ, Cao YX, Zhao K

ABOUT COVER

Editorial Board Member of *World Journal of Gastrointestinal Oncology*, Wael M Abdel-Rahman, MD, PhD, Full Professor, Chairman, Department of Medical Laboratory Sciences, College of Health Sciences and Research Institute of Medical and Health Sciences, University of Sharjah, Sharjah 27272, United Arab Emirates. whassan@sharjah.ac.ae

AIMS AND SCOPE

The primary aim of *World Journal of Gastrointestinal Oncology* (WJGO, *World J Gastrointest Oncol*) is to provide scholars and readers from various fields of gastrointestinal oncology with a platform to publish high-quality basic and clinical research articles and communicate their research findings online.

WJGO mainly publishes articles reporting research results and findings obtained in the field of gastrointestinal oncology and covering a wide range of topics including liver cell adenoma, gastric neoplasms, appendiceal neoplasms, biliary tract neoplasms, hepatocellular carcinoma, pancreatic carcinoma, cecal neoplasms, colonic neoplasms, colorectal neoplasms, duodenal neoplasms, esophageal neoplasms, gallbladder neoplasms, etc.

INDEXING/ABSTRACTING

The WJGO is now abstracted and indexed in PubMed, PubMed Central, Science Citation Index Expanded (SCIE, also known as SciSearch®), Journal Citation Reports/Science Edition, Scopus, Reference Citation Analysis, China Science and Technology Journal Database, and Superstar Journals Database. The 2023 edition of Journal Citation Reports® cites the 2022 impact factor (IF) for WJGO as 3.0; IF without journal self cites: 2.9; 5-year IF: 3.0; Journal Citation Indicator: 0.49; Ranking: 157 among 241 journals in oncology; Quartile category: Q3; Ranking: 58 among 93 journals in gastroenterology and hepatology; and Quartile category: Q3. The WJGO's CiteScore for 2022 is 4.1 and Scopus CiteScore rank 2022: Gastroenterology is 71/149; Oncology is 197/366.

RESPONSIBLE EDITORS FOR THIS ISSUE

Production Editor: Xiang-Di Zhang; Production Department Director: Xiang Li; Editorial Office Director: Jia-Ru Fan.

NAME OF JOURNAL

World Journal of Gastrointestinal Oncology

ISSN

ISSN 1948-5204 (online)

LAUNCH DATE

February 15, 2009

FREQUENCY

Monthly

EDITORS-IN-CHIEF

Monjur Ahmed, Florin Burada

EDITORIAL BOARD MEMBERS

<https://www.wjgnet.com/1948-5204/editorialboard.htm>

PUBLICATION DATE

January 15, 2024

COPYRIGHT

© 2023 Baishideng Publishing Group Inc

INSTRUCTIONS TO AUTHORS

<https://www.wjgnet.com/bpg/gerinfo/204>

GUIDELINES FOR ETHICS DOCUMENTS

<https://www.wjgnet.com/bpg/GerInfo/287>

GUIDELINES FOR NON-NATIVE SPEAKERS OF ENGLISH

<https://www.wjgnet.com/bpg/gerinfo/240>

PUBLICATION ETHICS

<https://www.wjgnet.com/bpg/GerInfo/288>

PUBLICATION MISCONDUCT

<https://www.wjgnet.com/bpg/gerinfo/208>

ARTICLE PROCESSING CHARGE

<https://www.wjgnet.com/bpg/gerinfo/242>

STEPS FOR SUBMITTING MANUSCRIPTS

<https://www.wjgnet.com/bpg/GerInfo/239>

ONLINE SUBMISSION

<https://www.f6publishing.com>



Retrospective Study

Comparative study between Embosphere® and Marine gel® as embolic agents for chemoembolization of hepatocellular carcinoma

Hyo-Cheol Kim, Jin Woo Choi

Specialty type: Oncology

Provenance and peer review:

Unsolicited article; Externally peer reviewed.

Peer-review model: Single blind

Peer-review report's scientific quality classification

Grade A (Excellent): 0
Grade B (Very good): 0
Grade C (Good): C, C
Grade D (Fair): 0
Grade E (Poor): 0

P-Reviewer: Bi JF, China; Niu ZS, China

Received: September 3, 2023

Peer-review started: September 3, 2023

First decision: October 30, 2023

Revised: November 12, 2023

Accepted: December 8, 2023

Article in press: December 8, 2023

Published online: January 15, 2024



Hyo-Cheol Kim, Jin Woo Choi, Department of Radiology, Seoul National University Hospital, Seoul 03080, South Korea

Corresponding author: Hyo-Cheol Kim, MD, Professor, Department of Radiology, Seoul National University Hospital, 101 Daehak-ro Jongno-gu, Seoul 03080, South Korea.
radioembolization@snu.ac.kr

Abstract

BACKGROUND

While gelatin sponge particles and calibrated microspheres are commonly used as embolic materials in conventional transarterial chemoembolization (cTACE), direct comparisons between these embolic agents are rare.

AIM

To compare the efficacy and safety of superselective cTACE using Embosphere® or Marine gel® in patients with early-stage hepatocellular carcinoma (HCC).

METHODS

This retrospective study included 70 patients with small (< 4 cm) HCC who underwent cTACE with Embosphere® ($n = 33$) or Marine gel® ($n = 37$) as the embolic agent at a single center between March 2021 and July 2022. The radiologic images and clinical data were retrospectively reviewed, with an emphasis on tumor response, procedure-related complications, and local tumor recurrence. The primary index tumor was assessed on a 1-mo follow-up image, and local progression-free survival was obtained using the Kaplan-Meier method and was compared by the log-rank test.

RESULTS

The median tumor size of both groups was 1.5 cm, and 69 patients achieved a complete response one month after cTACE. The cumulative local recurrence rate at 12 mo was 15.5% in the Embosphere® group and 14.4% in the Marine gel® group. The local progression-free survival was not significantly different between the two groups ($P = 0.83$). In the multivariate analysis, high serum alpha-fetoprotein was the only significant poor prognostic factor for local tumor progression ($P = 0.01$). Postembolization syndrome occurred in 36.4% of the Embosphere® group and 35.1% of the Marine gel® group, and there were no cases of biloma, biliary duct dilation, or liver abscess in either group.

CONCLUSION

Calibrated gelatin sponge particles (Marine gel®) and calibrated microspheres (Embosphere®) have similar outcomes in terms of tumor response for superselective cTACE of small HCC.

Key Words: Hepatocellular carcinoma; Chemoembolization; Temporary embolic material; Permanent embolic material; Tumor response

©The Author(s) 2024. Published by Baishideng Publishing Group Inc. All rights reserved.

Core Tip: Conventional chemoembolization, a main treatment option for unresectable hepatocellular carcinoma (HCC), involves delivery of anticancer drug and embolic materials. The current study aimed to assess the tumor response of superselective chemoembolization using calibrated gelatin sponge particles and calibrated microspheres as embolic materials. There is no significant difference in tumor response between the use of calibrated gelatin sponge particles and calibrated microspheres for conventional chemoembolization in small HCC.

Citation: Kim HC, Choi JW. Comparative study between Embosphere® and Marine gel® as embolic agents for chemoembolization of hepatocellular carcinoma. *World J Gastrointest Oncol* 2024; 16(1): 102-109

URL: <https://www.wjgnet.com/1948-5204/full/v16/i1/102.htm>

DOI: <https://dx.doi.org/10.4251/wjgo.v16.i1.102>

INTRODUCTION

Transarterial chemoembolization (TACE) is a mainstay treatment option for patients with unresectable hepatocellular carcinoma (HCC)[1]. In cases where curative modalities are not feasible for various reasons, such as tumor location and comorbidities, TACE may be indicated as an alternative treatment option for early-stage HCC[1]. The two main elements of TACE involve intra-arterial delivery of a chemotherapeutic agent and blockage of the hepatic artery. In conventional TACE (cTACE), iodized oil (Lipiodol; Laboratoire Andre Guerbet, Aulnay-sous-Bois, France) and gelatin sponge particles are used as a drug carrier and embolic material, respectively, while drug-loaded microspheres such as DC beads (Boston Scientific, Natick, MA, United States) and HepaSphere (Merit Medical) are used as both a drug carrier and embolic material in drug-eluting embolic TACE[2].

Hand-cut or crushed gelatin sponge particles have been used as embolic materials in Asian countries for several decades[3,4]. However, these particles may have some limitations. For instance, their wide range of sizes and tendency of aggregation may induce premature occlusion of the proximal tumor-feeding vessel, which can reduce the efficacy of the treatment[4]. On the other hand, microspheres such as Embosphere® are commonly used in Western countries for cTACE due to their ability to penetrate deeper into fine intratumoral vessels and their predictable size[5,6]. Additionally, the temporary nature of gelatin sponge particles and the permanent nature of Embosphere® can also affect the duration and efficacy of the treatment.

Recently, calibrated gelatin sponge particles made from fish, known as Marine gel® (PL Micromed, Yangsan, Korea), have been introduced as a potential alternative. These particles are expected to offer the benefits of both temporary embolic material and calibrated microspheres. The objective of this study was to compare the efficacy and safety of superselective cTACE employing either Embosphere® or Marine gel® as the embolic agent in individuals diagnosed with early-stage HCC.

MATERIALS AND METHODS

The institutional review board approved this retrospective study and permitted the waiving of informed consent. This study encompassed HCC patients who received cTACE using either Embosphere® or Marine gel® as the embolic agent at a single center between March 2021 and July 2022. The cohort consisted of a total of 70 patients, of whom 33 were treated with Embosphere® and 37 with Marine gel®. The study population was comprised of 55 men and 15 women [mean age: 67.4 ± 10.5 years (range: 27-90 years)]. The inclusion criteria were: (1) At least one treatment-naïve HCC ≥ 10 mm; (2) Nodular HCC; (3) Successful superselective cTACE (all subsegmental tumor-feeding arteries were catheterized, lipiodol and the embolic agent were adequately infused, and there was no untreated tumor-feeding artery); and (4) Child-Pugh score ≤ 8. The exclusion criteria were: (1) Primary index tumor > 4 cm; and (2) Tumor number > 4.

One author (17 years of experience in interventional oncology) performed all chemoembolization procedures, which were previously described in detail[7-9]. Celiac and superior mesenteric angiograms were obtained using a 5-Fr catheter, and a cone-beam computed tomography (CT) scan was performed at the level of the proper hepatic artery or its equivalent to investigate the entire liver. The cone-beam CT images were thoroughly reviewed by the operators to determine the tumor number and size, as well as the tumor-feeding vessels and their origin. Subsegmental tumor-feeding

arteries were catheterized using a 1.7-Fr microcatheter (Progreat lamda; Terumo, Tokyo, Japan, or Radiostar 1.7; Taewoong, Koyang, Korea). An emulsion of iodized oil and doxorubicin hydrochloride (Adriamycin RDF; Ildong, Seoul, Korea) was infused *via* the subsegmental tumor-feeding arteries until dense accumulation of iodized oil in the tumor was observed under fluoroscopy. Additional embolization was performed using Embosphere® (40-120 µm) or Marine gel® (100-150 µm) to achieve complete stasis of tumor-feeding arteries. The use of Embosphere® and Marine gel® was determined by the operator in a random fashion without any preference. Follow-up enhanced cross-sectional imaging was performed 1 mo after TACE and then every 2-3 mo thereafter.

Radiologic images and clinical data were retrospectively reviewed with a focus on tumor response, procedure-related complications, and local tumor recurrence. The primary index tumor was defined as the largest tumor, and the tumor response of the primary index tumor was assessed using the modified Response Evaluation Criteria in Solid Tumors on the 1-mo follow-up image[10]. Complications related to chemoembolization were graded according to the National Cancer Institute Common Terminology Criteria for Adverse Events, version 5.0[11].

Statistical analysis was performed to compare the demographic and clinical variables between the two groups using Fisher's exact test, χ^2 test, or Student's *t* test. Local progressive disease was defined as either the regrowth of the primary index tumor or the appearance of new viable tumors within the primary index tumor. For patients who underwent surgical resection or liver transplantation, local progression-free survival was censored on the day of operation. The Kaplan-Meier method was used to obtain local progression-free survival, and it was compared by the log-rank test. Treatment effects between the two groups were compared using univariable analysis and multivariable Cox proportional hazard models. A *P* value of less than 0.05 was considered statistically significant. All statistical analyses were performed using SPSS version 27.0 software (SPSS Inc., Chicago, IL, United States).

RESULTS

The baseline characteristics of the two study groups are summarized in Table 1. The median tumor size in both groups was 1.5 cm. The median follow-up period was 12.9 mo and 10.7 mo in the Embosphere® and Marine gel® groups, respectively. The data-cutoff date was July 31, 2023. Tumor response 1 mo after cTACE was a complete response in 69 patients and a partial response in one patient in the Marine gel® group. During the follow-up period, local progression was observed in six patients in the Embosphere® group and five patients in the Marine gel® group. There was no significant difference in local progression-free survival between the two groups (*P* = 0.83) (Figure 1). At the 12-mo mark, the cumulative local recurrence rates were 15.5% in the Embosphere® group and 14.4% in the Marine gel® group. In the multivariate analysis, only high serum alpha-fetoprotein emerged as a significant poor prognostic factor for local tumor progression (*P* = 0.01) (Table 2).

The incidence of adverse events is summarized in Table 3. Postembolization syndrome occurred in 36.4% and 35.1% of the Embosphere® group and Marine gel® groups, respectively. Two patients had unscheduled hospital visits due to abdominal pain, and one of them had focal hepatic parenchymal infarction, which was managed by conservative treatment including painkillers. There were no cases of biloma, biliary duct dilation, or liver abscess.

DISCUSSION

In this study, the effectiveness of two embolic materials, calibrated gelatin sponge particles (Marine gel®) and calibrated microspheres (Embosphere®), was compared for superselective cTACE of small HCC. The study aimed to minimize the bias from patient and technical factors on tumor response by including only patients with small HCCs that were completely treated by superselective cTACE. All patients, except for one treated with Marine gel®, had a complete response at the 1-mo follow-up CT, and there was no statistically significant difference in local progression-free survival between the two groups. Cumulative local recurrence was less than 20% at 1 year for both embolic materials.

The results of this study are consistent with a previous report that used crushed gelatin sponge particles smaller than 200 µm as an embolic material[12]. Although various embolic materials have been used in cTACE, the advantages of each embolic agent remain controversial, and direct comparisons between embolic agents are rare. In Asian countries, temporary embolic agents such as gelatin sponge particles have been used for several decades due to their desirable characteristics in terms of maintaining hepatic artery patency and preventing biliary injury. However, the potential disadvantage of premature occlusion of tumor-feeding vessels due to particle aggregation and early tumor recurrence due to early recanalization of the tumor-feeding artery should be considered. Marine gel® is an alternative embolic material made of fish-derived calibrated gelatin sponge particles that can be used in Islamic countries.

In this study, one patient (Embosphere® group) had a focal hepatic parenchymal infarct, which may have been associated with excessive embolization of the hepatic artery. However, there were no cases of biloma or biliary duct dilation. The reported incidence of biliary complications is quite variable (4%-35%), depending on the embolic material used, the degree of superselection, and the presence of liver cirrhosis[12-14]. The low incidence of biliary complications in this study may be due to the inclusion of only patients with small tumors that were superselectively treated. Further studies, including larger tumors (> 4 cm), are needed to investigate the incidence of biliary complications.

This study has several limitations, including the relatively short follow-up period and the lack of comparison of overall survival. All patients had early-stage HCC and were alive at the time of data collection. Long-term follow-up studies are necessary to investigate survival differences between embolic materials. Additionally, all cTACE procedures were performed by one experienced interventional radiologist, which may limit the reproducibility of the excellent tumor

Table 1 Baseline characteristics of the study population

	Total (n = 70)	Embosphere (n = 33)	Marine gel (n = 37)	P value
Age	67.4 ± 10.5	68.4 ± 8.5	66.4 ± 12.1	0.44
Sex				0.53
Male	55	27	28	
Female	15	6	9	
Etiology				0.99
HBV	48	24	24	
HCV	2	1	1	
HBV + HCV	5	1	4	
Non-viral	15	7	8	
Platelet (10 ³ /mm ³)	126.1 ± 58.9	119.4 ± 65.7	132.1 ± 52.3	0.37
Serum albumin(g/dL)	4.05 ± 0.47	3.97 ± 0.52	4.12 ± 0.41	0.20
Total bilirubin (mg/dL)	0.77 ± 0.60	0.74 ± 0.54	0.80 ± 0.64	0.70
PT (INR)	1.08 ± 0.14	1.10 ± 0.13	1.07 ± 0.15	0.32
Creatinine (mg/dL)	1.09 ± 0.92	1.14 ± 1.03	1.04 ± 0.82	0.67
ALT	27.7 ± 14.7	30.5 ± 16.8	25.1 ± 12.2	0.13
AST	34.1 ± 16.7	38.0 ± 19.6	30.7 ± 12.9	0.07
Child-Pugh class				0.49
A	67	31	36	
B	3	2	1	
Previous Tx				0.55
RFA	18	11	7	
Resection	5	1	4	
AFP (≤ 100 ng/mL/> 100 ng/mL)	62/8	30/3	32/5	0.56
PIVKA (≤ 100 mAU/mL/> 100 mAU/mL)	59/11	30/3	29/8	0.15
Tumor size (cm)				0.50
mean ± SD		1.7 ± 0.6	1.8 ± 0.7	
Median		1.5	1.5	
Range		1.0-3.2	1.0-3.6	

HCV: Hepatitis C virus; HBV: Hepatitis B virus; PT: Prothrombin time; INR: International normalized ratio; ALT: Alanine aminotransferase; AST: Aspartate aminotransferase; RFA: Radiofrequency ablation; AFP: Alpha-fetoprotein; PIVKA: Prothrombin induced by vitamin K deficiency or antagonist.

response if cTACE is performed in a less selective fashion by inexperienced practitioners.

CONCLUSION

In conclusion, the study suggests that there are comparable outcomes in terms of tumor response for superselective cTACE of small HCC when using either calibrated gelatin sponge particles or calibrated microspheres. However, the choice of embolic material should be carefully considered based on patient and tumor characteristics, as well as the experience of the practitioner.

Table 2 Univariate and multivariate analysis of prognostic factors for local progression-free survival

Parameter	Univariable analysis			Multivariable analysis		
	HR	95%CI	P value	HR	95%CI	P value
Group (embosphere <i>vs</i> marine gel)	1.121	0.339-3.707	0.851			
Age (> 65 <i>vs</i> ≤ 65)	1.444	0.383-5.448	0.58			
Sex (male <i>vs</i> female)	2.628	0.336-20.55	0.34			
HBV (positive <i>vs</i> negative)	1.911	0.558-6.540	0.29			
Platelet (≤ 120 <i>vs</i> > 120) (10 ³ /mm ³)	1.939	0.567-6.630	0.28			
Serum albumin (≤ 3.5 <i>vs</i> > 3.5) (g/dL)	25.03	0.012-5251.5	0.20			
Total bilirubin (> 1.0 <i>vs</i> ≤ 1.0) (mg/dL)	26.63	0.026-2756.8	0.14			
PT (> 1.2 <i>vs</i> ≤ 1.2) (INR)	26.33	0.024-2905.2	0.15			
ALT (> 40 <i>vs</i> ≤ 40) (IU/L)	1.088	0.235-5.040	0.91			
AST (> 40 <i>vs</i> ≤ 40) (IU/L)	3.528	0.451-27.62	0.20			
AFP (> 100 ng/mL <i>vs</i> ≤ 100 ng/mL)	5.407	1.572-18.60	0.003	5.130	1.479-17.79	0.01
PIVKA (> 100 mAU/mL <i>vs</i> 100 mAU/mL)	1.233	0.266-5.719	0.79			
Tumor size (> 2 cm <i>vs</i> ≤ 2 cm)	1.040	0.275-3.935	0.953			

HR: Hazard ratio; CI: Confidence interval; HBV: Hepatitis B virus; PT: Prothrombin time; INR: International normalized ratio; ALT: Alanine aminotransferase; AST: Aspartate aminotransferase; AFP: Alpha-fetoprotein; PIVKA: Prothrombin induced by vitamin K deficiency or antagonist.

Table 3 Adverse events and toxicities according to the treatment group

	Total (n = 70)	Embosphere (n = 33)	Marine gel (n = 37)	P value
Postembolization syndrome	25	12 (36.4)	13 (35.1)	0.915
Fever	1	1	0	0.286
Nausea/vomiting	6	2	4	0.479
Pain	23	11	12	0.448
Unscheduled hospital visit	2	1	1	0.935
Laboratory toxicity (90 d)				
PT-INR (grade 0/1/2)	69/1/0	32/1/0	37/0/0	0.286
Albumin (grade 0/1/2)	67/3/0	32/1/0	35/2/0	0.624
Total bilirubin (grade 0/1/2)	63/5/2	30/2/1	33/3/1	0.811
AST (grade 0/1/2/3)	58/11/0/1	26/7/0/0	32/4/0/1	0.394
ALT (grade 0/1/2/3)	63/5/1/1	30/2/1/0	33/3/0/1	0.811
Alkaline phosphatase (grade 0/1/2)	67/3/0	33/0/0	34/3/0	0.095
Biloma	0	0	0	1.0
Liver abscess	0	0	0	1.0
Biliary duct dilation	0	0	0	1.0
Focal hepatic parenchymal infarct	1	1	0	0.286

PT: Prothrombin time; INR: International normalized ratio; ALT: Alanine aminotransferase; AST: Aspartate aminotransferase. Number in parentheses is percentage.

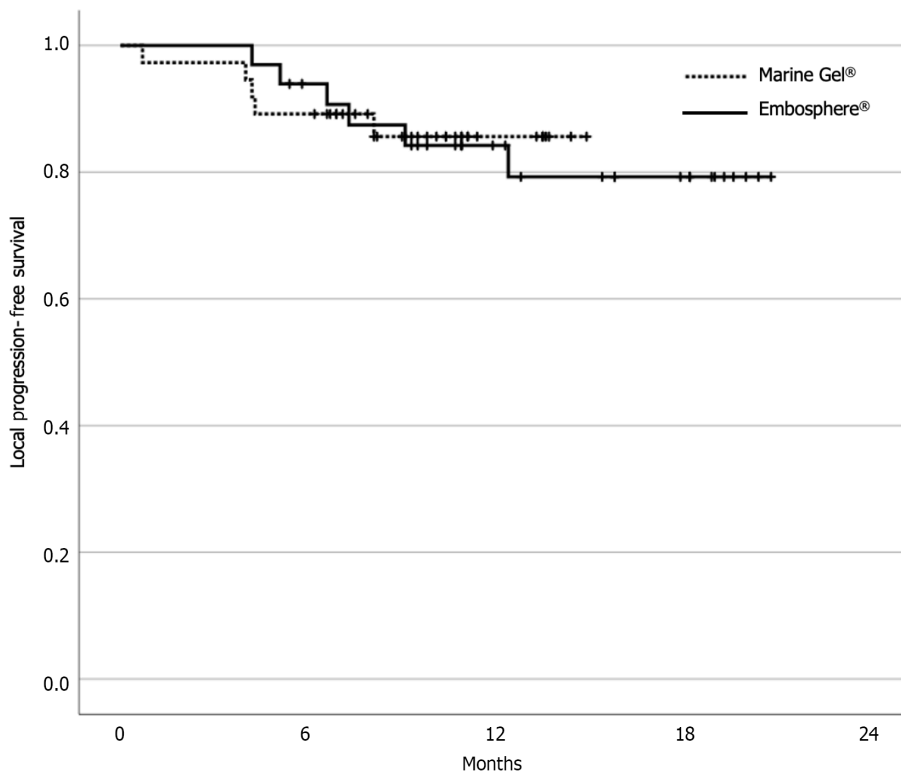


Figure 1 Kaplan-Meier estimates of local progression-free survival.

ARTICLE HIGHLIGHTS

Research background

Hand-cut or crushed gelatin sponge particles have been used in Asian countries for decades as embolic materials in conventional transarterial chemoembolization (cTACE), but they have limitations, including a wide range of sizes and a tendency to aggregate, which can reduce treatment efficacy. In Western countries, microspheres like Embosphere® are preferred due to their ability to penetrate fine intratumoral vessels and their predictable size. The choice between these embolic agents, with gelatin sponge particles being temporary and Embosphere® being permanent, can impact the duration and effectiveness of the cTACE treatment, although direct comparisons between them are rare.

Research motivation

Lately, there has been an introduction of calibrated gelatin sponge particles derived from fish, marketed under the name Marine gel® (PL Micromed, Yangsan, Korea), which are being considered as a possible alternative. These particles are anticipated to provide the advantages of both temporary embolic materials and calibrated microspheres.

Research objectives

The aim of this study was to evaluate the effectiveness and safety of superselective cTACE when utilizing either Embosphere® or Marine gel® as the embolic agent in individuals with early-stage hepatocellular carcinoma (HCC).

Research methods

This retrospective analysis involved 70 patients diagnosed with small HCC, measuring less than 4 cm in size. These patients underwent chemoembolization procedures at a single medical center between March 2021 and July 2022, with Embosphere® ($n = 33$) or Marine gel® ($n = 37$) serving as the chosen embolic agents. The study involved a comprehensive review of radiological images and clinical data, focusing on factors such as tumor response, complications associated with the procedure, and instances of local tumor recurrence. The effectiveness of the primary index tumor treatment was assessed using a 1-mo follow-up imaging analysis. The study also calculated local progression-free survival using the Kaplan-Meier method and compared the outcomes using the log-rank test.

Research results

Both groups had a median tumor size of 1.5 cm, and after one month of undergoing cTACE, 69 patients achieved a complete response. The cumulative local recurrence rate at the 12-mo mark was 15.5% in the Embosphere® group and 14.4% in the Marine gel® group. Notably, there was no significant difference in local progression-free survival between these two groups ($P = 0.83$). In a multivariate analysis, high serum alpha-fetoprotein emerged as the sole significant adverse prognostic factor for local tumor progression ($P = 0.01$).

Research conclusions

Superselective cTACE for small HCC yields comparable tumor response outcomes when employing calibrated gelatin sponge particles (Marine gel®) and calibrated microspheres (Embosphere®).

Research perspectives

Multicenter prospective study is needed to confirm the adequate embolic agents in chemoembolization for HCC.

FOOTNOTES

Author contributions: Kim HC designed the research study and performed the research; Kim HC and Choi JW analyzed the data and wrote the manuscript; and all authors have read and approve the final manuscript.

Institutional review board statement: This study was reviewed and approved by the Ethics Committee of Seoul National University Hospital.

Informed consent statement: The informed consent was waived by the institutional review board.

Conflict-of-interest statement: All the authors report no relevant conflicts of interest for this article.

Data sharing statement: No additional data available.

Open-Access: This article is an open-access article that was selected by an in-house editor and fully peer-reviewed by external reviewers. It is distributed in accordance with the Creative Commons Attribution NonCommercial (CC BY-NC 4.0) license, which permits others to distribute, remix, adapt, build upon this work non-commercially, and license their derivative works on different terms, provided the original work is properly cited and the use is non-commercial. See: <https://creativecommons.org/licenses/by-nc/4.0/>

Country/Territory of origin: South Korea

ORCID number: Hyo-Cheol Kim 0000-0002-6016-247X; Jin Woo Choi 0000-0002-6639-8002.

S-Editor: Wang JJ

L-Editor: A

P-Editor: Zhang XD

REFERENCES

1. Reig M, Forner A, Rimola J, Ferrer-Fàbrega J, Burrel M, Garcia-Criado Á, Kelley RK, Galle PR, Mazzaferro V, Salem R, Sangro B, Singal AG, Vogel A, Fuster J, Ayuso C, Bruix J. BCLC strategy for prognosis prediction and treatment recommendation: The 2022 update. *J Hepatol* 2022; **76**: 681-693 [PMID: 34801630 DOI: 10.1016/j.jhep.2021.11.018]
2. Lee EW, Khan S. Recent advances in transarterial embolotherapies in the treatment of hepatocellular carcinoma. *Clin Mol Hepatol* 2017; **23**: 265-272 [PMID: 29113030 DOI: 10.3350/cmh.2017.0111]
3. Shin SW. The current practice of transarterial chemoembolization for the treatment of hepatocellular carcinoma. *Korean J Radiol* 2009; **10**: 425-434 [PMID: 19721826 DOI: 10.3348/kjr.2009.10.5.425]
4. Miyayama S, Matsui O. Superselective Conventional Transarterial Chemoembolization for Hepatocellular Carcinoma: Rationale, Technique, and Outcome. *J Vasc Interv Radiol* 2016; **27**: 1269-1278 [PMID: 27345337 DOI: 10.1016/j.jvir.2016.04.014]
5. Salem R, Gordon AC, Mouli S, Hickey R, Kallini J, Gabr A, Mulcahy MF, Baker T, Abecassis M, Miller FH, Yaghamai V, Sato K, Desai K, Thornburg B, Benson AB, Rademaker A, Ganger D, Kulik L, Lewandowski RJ. Y90 Radioembolization Significantly Prolongs Time to Progression Compared With Chemoembolization in Patients With Hepatocellular Carcinoma. *Gastroenterology* 2016; **151**: 1155-1163.e2 [PMID: 27575820 DOI: 10.1053/j.gastro.2016.08.029]
6. Padia SA, Johnson GE, Horton KJ, Ingraham CR, Kogut MJ, Kwan S, Vaidya S, Monsky WL, Park JO, Bhattacharya R, Hippe DS, Harris WP. Segmental Yttrium-90 Radioembolization versus Segmental Chemoembolization for Localized Hepatocellular Carcinoma: Results of a Single-Center, Retrospective, Propensity Score-Matched Study. *J Vasc Interv Radiol* 2017; **28**: 777-785.e1 [PMID: 28365172 DOI: 10.1016/j.jvir.2017.02.018]
7. Miyayama S, Yamashiro M, Hashimoto M, Hashimoto N, Ikuno M, Okumura K, Yoshida M, Matsui O. Identification of small hepatocellular carcinoma and tumor-feeding branches with cone-beam CT guidance technology during transcatheter arterial chemoembolization. *J Vasc Interv Radiol* 2013; **24**: 501-508 [PMID: 23452552 DOI: 10.1016/j.jvir.2012.12.022]
8. Miyayama S. Ultrasensitive conventional transarterial chemoembolization: When and how? *Clin Mol Hepatol* 2019; **25**: 344-353 [PMID: 31022779 DOI: 10.3350/cmh.2019.0016]
9. Kim HC, Miyayama S, Choi JW, Kim GM, Chung JW. Hepatocellular Carcinoma Supplied by the Inferior Phrenic Artery or Cystic Artery: Anatomic and Technical Considerations. *Radiographics* 2023; **43**: e220076 [PMID: 36306220 DOI: 10.1148/rg.220076]
10. Lencioni R, Llovet JM. Modified RECIST (mRECIST) assessment for hepatocellular carcinoma. *Semin Liver Dis* 2010; **30**: 52-60 [PMID: 20175033 DOI: 10.1055/s-0030-1247132]
11. U.S. Department of Health and Human Services. National Institutes of Health, National Cancer Institute. Common Terminology Criteria for Adverse Events (CTCAE) Version 5.0. 2017. [cited 15 July 2023]. Available from: https://ctep.cancer.gov/protocoldevelopment/electronic_

[applications/docs/CTCAE_v5_Quick_Reference_8.5x11.pdf](#)

- 12 **Miyayama S**, Matsui O, Yamashiro M, Ryu Y, Kaito K, Ozaki K, Takeda T, Yoneda N, Notsumata K, Toya D, Tanaka N, Mitsui T. Ultrasensitive transcatheter arterial chemoembolization with a 2-f tip microcatheter for small hepatocellular carcinomas: relationship between local tumor recurrence and visualization of the portal vein with iodized oil. *J Vasc Interv Radiol* 2007; **18**: 365-376 [PMID: [17377182](#) DOI: [10.1016/j.jvir.2006.12.004](#)]
- 13 **Lee IJ**, Lee JH, Lee YB, Kim YJ, Yoon JH, Yin YH, Lee M, Hur S, Kim HC, Jae HJ, Chung JW. Effectiveness of drug-eluting bead transarterial chemoembolization versus conventional transarterial chemoembolization for small hepatocellular carcinoma in Child-Pugh class A patients. *Ther Adv Med Oncol* 2019; **11**: 1758835919866072 [PMID: [31447948](#) DOI: [10.1177/1758835919866072](#)]
- 14 **Guin B**, Deschamps F, Aho S, Munck F, Dromain C, Boige V, Malka D, Leboulleux S, Ducreux M, Schlumberger M, Baudin E, de Baere T. Liver/biliary injuries following chemoembolisation of endocrine tumours and hepatocellular carcinoma: lipiodol vs. drug-eluting beads. *J Hepatol* 2012; **56**: 609-617 [PMID: [22027582](#) DOI: [10.1016/j.jhep.2011.09.012](#)]



Published by **Baishideng Publishing Group Inc**
7041 Koll Center Parkway, Suite 160, Pleasanton, CA 94566, USA

Telephone: +1-925-3991568

E-mail: bpgoffice@wjgnet.com

Help Desk: <https://www.f6publishing.com/helpdesk>

<https://www.wjgnet.com>

