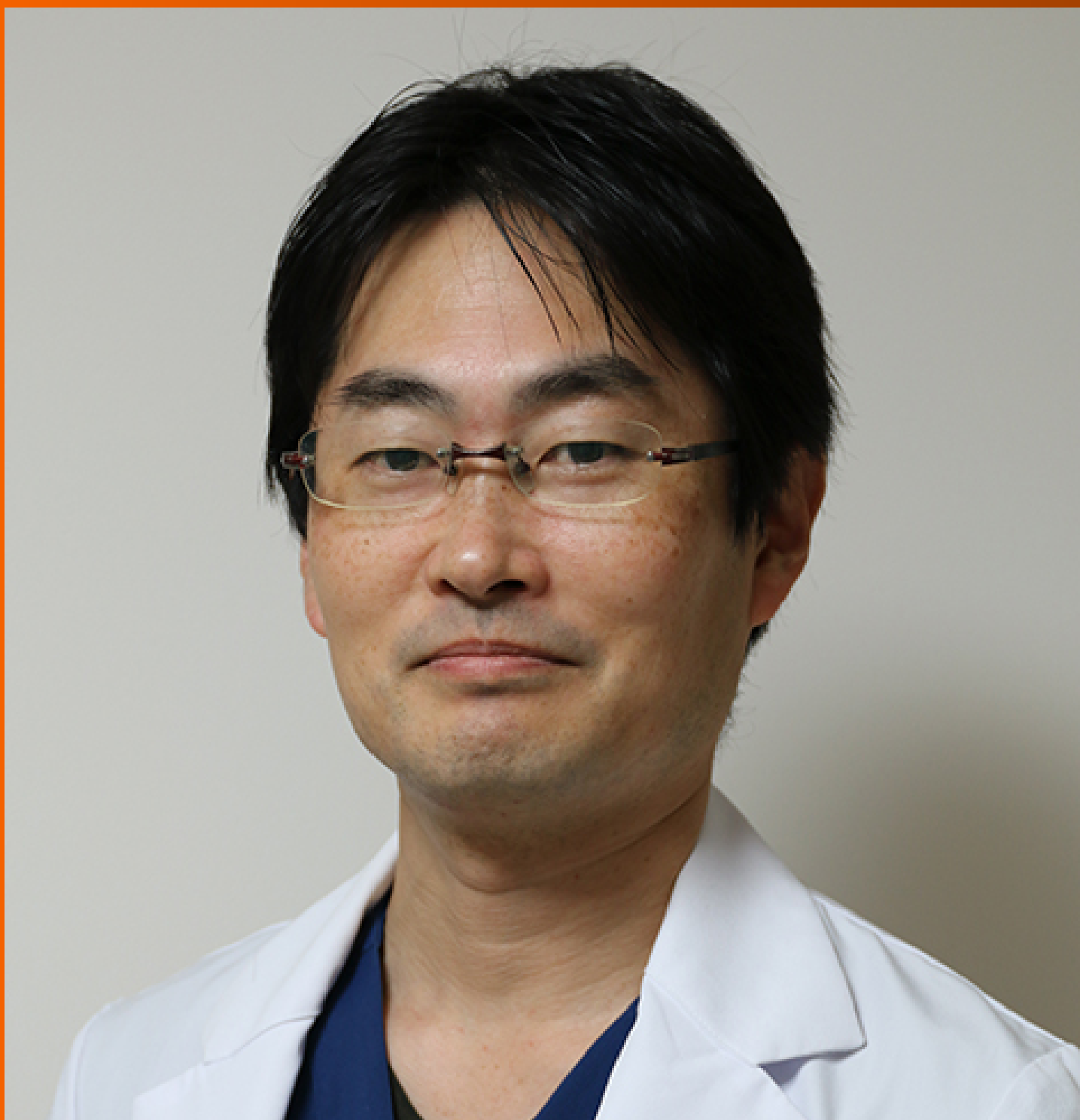


# World Journal of *Gastrointestinal Oncology*

*World J Gastrointest Oncol* 2024 February 15; 16(2): 251-570



## EDITORIAL

- 251 Cardiotoxicity induced by fluoropyrimidine drugs in the treatment of gastrointestinal tumors  
*Kong MW, Sun FD, Pei ZY, Xu L, Wang ZB, Chen Y, Tang SQ, Yang TF, He GX*
- 255 Does enhanced recovery after surgery programs improve clinical outcomes in liver cancer surgery?  
*Sánchez-Pérez B, Ramia JM*

## REVIEW

- 259 Biological factors driving colorectal cancer metastasis  
*An SX, Yu ZJ, Fu C, Wei MJ, Shen LH*

## MINIREVIEWS

- 273 Progress in the treatment of advanced hepatocellular carcinoma with immune combination therapy  
*Pan D, Liu HN, Qu PF, Ma X, Ma LY, Chen XX, Wang YQ, Qin XB, Han ZX*
- 287 Targeting oxidative stress with natural products: A novel strategy for esophageal cancer therapy  
*Cao F, Zhang HL, Guo C, Xu XL, Yuan Q*
- 300 Multifaceted role of microRNAs in gastric cancer stem cells: Mechanisms and potential biomarkers  
*Sun QH, Kuang ZY, Zhu GH, Ni BY, Li J*

## ORIGINAL ARTICLE

## Clinical and Translational Research

- 314 Expression of cyclin-dependent kinase 9 is positively correlated with the autophagy level in colon cancer  
*Zheng L, Lu J, Kong DL*
- 331 Tumour response following preoperative chemotherapy is affected by body mass index in patients with colorectal liver metastases  
*Song HC, Zhou HC, Gu P, Bao B, Sun Q, Mei TM, Cui W, Yao K, Yao HZ, Zhang SY, Wang YS, Song RP, Wang JZ*

## Case Control Study

- 343 Preoperative controlling nutritional status as an optimal prognostic nutritional index to predict the outcome for colorectal cancer  
*Liu LX, Wang H, Gao B, Xu TT, Yuan QG, Zhou SZ, Ding C, Miao J, Guan WX*

## Retrospective Study

- 354 Effect of screening colonoscopy frequency on colorectal cancer mortality in patients with a family history of colorectal cancer  
*Zheng L, Li B, Lei L, Wang LJ, Zeng ZP, Yang JD*

- 364 Effect of different anesthetic modalities with multimodal analgesia on postoperative pain level in colorectal tumor patients

*Tang JC, Ma JW, Jian JJ, Shen J, Cao LL*

#### Observational Study

- 372 Prognostic value of circulating tumor cells combined with neutrophil-lymphocyte ratio in patients with hepatocellular carcinoma

*Chen JL, Guo L, Wu ZY, He K, Li H, Yang C, Han YW*

- 386 Systemic Inflammation Response Index and weight loss as prognostic factors in metastatic pancreatic cancer: A concept study from the PANTHEIA-SEOM trial

*Pacheco-Barcia V, Custodio-Cabello S, Carrasco-Valero F, Palka-Kotlowska M, Mariño-Mendez A, Carmona-Bayonas A, Gallego J, Martín AJM, Jimenez-Fonseca P, Cabezon-Gutierrez L*

#### Basic Study

- 398 Prohibitin 1 inhibits cell proliferation and induces apoptosis *via* the p53-mediated mitochondrial pathway *in vitro*

*Shi JJ, Wang YK, Wang MQ, Deng J, Gao N, Li M, Li YP, Zhang X, Jia XL, Liu XT, Dang SS, Wang WJ*

- 414 Early results of the integrative epigenomic-transcriptomic landscape of colorectal adenoma and cancer

*Lu YW, Ding ZL, Mao R, Zhao GG, He YQ, Li XL, Liu J*

- 436 Comprehensive analysis of the potential pathogenesis of COVID-19 infection and liver cancer

*Rong Y, Tang MZ, Liu SH, Li XF, Cai H*

- 458 Immune-related long noncoding RNA zinc finger protein 710-AS1-201 promotes the metastasis and invasion of gastric cancer cells

*Ding W, Chen WW, Wang YQ, Xu XZ, Wang YB, Yan YM, Tan YL*

- 475 Comprehensive analysis of the protein phosphatase 2A regulatory subunit B56 $\epsilon$  in pan-cancer and its role and mechanism in hepatocellular carcinoma

*Wu HM, Huang YY, Xu YQ, Xiang WL, Yang C, Liu RY, Li D, Guo XF, Zhang ZB, Bei CH, Tan SK, Zhu XN*

- 493 Identification of anti-gastric cancer effects and molecular mechanisms of resveratrol: From network pharmacology and bioinformatics to experimental validation

*Ma YQ, Zhang M, Sun ZH, Tang HY, Wang Y, Liu JX, Zhang ZX, Wang C*

#### SYSTEMATIC REVIEWS

- 514 Prognostic nutritional index in predicting survival of patients with gastric or gastroesophageal junction adenocarcinoma: A systematic review

*Fiflis S, Christodoulidis G, Papakonstantinou M, Giakoustidis A, Koukias S, Roussos P, Kouliou MN, Koumarelas KE, Giakoustidis D*

#### SCIENTOMETRICS

- 527 Global research trends and prospects of cellular metabolism in colorectal cancer

*Liu YC, Gong ZC, Li CQ, Teng P, Chen YY, Huang ZH*

## CASE REPORT

- 543 Large isolated fibrous tumors in the upper esophagus: A case report  
*Yu JJ, Pei HS, Meng Y*
- 550 Hepatomegaly and jaundice as the presenting symptoms of systemic light-chain amyloidosis: A case report  
*Zhang X, Tang F, Gao YY, Song DZ, Liang J*
- 557 Anti-EGFR antibody monotherapy for colorectal cancer with severe hyperbilirubinemia: A case report  
*Tsurui T, Hirasawa Y, Kubota Y, Yoshimura K, Tsunoda T*
- 563 Early adenocarcinoma mixed with a neuroendocrine carcinoma component arising in the gastroesophageal junction: A case report  
*Cheng YQ, Wang GF, Zhou XL, Lin M, Zhang XW, Huang Q*

**ABOUT COVER**

Editorial Board Member of *World Journal of Gastrointestinal Oncology*, Akihiko Oka, MD, PhD, Assistant Professor, Department of Internal Medicine II, Shimane University Faculty of Medicine, Izumo 693-8501, Japan.  
aoka@med.shimane-u.ac.jp

**AIMS AND SCOPE**

The primary aim of *World Journal of Gastrointestinal Oncology* (WJGO, *World J Gastrointest Oncol*) is to provide scholars and readers from various fields of gastrointestinal oncology with a platform to publish high-quality basic and clinical research articles and communicate their research findings online.

WJGO mainly publishes articles reporting research results and findings obtained in the field of gastrointestinal oncology and covering a wide range of topics including liver cell adenoma, gastric neoplasms, appendiceal neoplasms, biliary tract neoplasms, hepatocellular carcinoma, pancreatic carcinoma, cecal neoplasms, colonic neoplasms, colorectal neoplasms, duodenal neoplasms, esophageal neoplasms, gallbladder neoplasms, *etc.*

**INDEXING/ABSTRACTING**

The WJGO is now abstracted and indexed in PubMed, PubMed Central, Science Citation Index Expanded (SCIE, also known as SciSearch®), Journal Citation Reports/Science Edition, Scopus, Reference Citation Analysis, China Science and Technology Journal Database, and Superstar Journals Database. The 2023 edition of Journal Citation Reports® cites the 2022 impact factor (IF) for WJGO as 3.0; IF without journal self cites: 2.9; 5-year IF: 3.0; Journal Citation Indicator: 0.49; Ranking: 157 among 241 journals in oncology; Quartile category: Q3; Ranking: 58 among 93 journals in gastroenterology and hepatology; and Quartile category: Q3. The WJGO's CiteScore for 2022 is 4.1 and Scopus CiteScore rank 2022: Gastroenterology is 71/149; Oncology is 197/366.

**RESPONSIBLE EDITORS FOR THIS ISSUE**

Production Editor: Xiang-Di Zhang; Production Department Director: Xiang Li; Editorial Office Director: Jia-Ru Fan.

**NAME OF JOURNAL**

*World Journal of Gastrointestinal Oncology*

**ISSN**

ISSN 1948-5204 (online)

**LAUNCH DATE**

February 15, 2009

**FREQUENCY**

Monthly

**EDITORS-IN-CHIEF**

Monjur Ahmed, Florin Burada

**EDITORIAL BOARD MEMBERS**

<https://www.wjgnet.com/1948-5204/editorialboard.htm>

**PUBLICATION DATE**

February 15, 2024

**COPYRIGHT**

© 2024 Baishideng Publishing Group Inc

**INSTRUCTIONS TO AUTHORS**

<https://www.wjgnet.com/bpg/gerinfo/204>

**GUIDELINES FOR ETHICS DOCUMENTS**

<https://www.wjgnet.com/bpg/GerInfo/287>

**GUIDELINES FOR NON-NATIVE SPEAKERS OF ENGLISH**

<https://www.wjgnet.com/bpg/gerinfo/240>

**PUBLICATION ETHICS**

<https://www.wjgnet.com/bpg/GerInfo/288>

**PUBLICATION MISCONDUCT**

<https://www.wjgnet.com/bpg/gerinfo/208>

**ARTICLE PROCESSING CHARGE**

<https://www.wjgnet.com/bpg/gerinfo/242>

**STEPS FOR SUBMITTING MANUSCRIPTS**

<https://www.wjgnet.com/bpg/GerInfo/239>

**ONLINE SUBMISSION**

<https://www.f6publishing.com>



## Basic Study

# Early results of the integrative epigenomic-transcriptomic landscape of colorectal adenoma and cancer

You-Wang Lu, Zhao-Li Ding, Rui Mao, Gui-Gang Zhao, Yu-Qi He, Xiao-Lu Li, Jiang Liu

**Specialty type:** Oncology

**Provenance and peer review:**

Unsolicited article; Externally peer reviewed.

**Peer-review model:** Single blind

**Peer-review report's scientific quality classification**

Grade A (Excellent): 0  
Grade B (Very good): 0  
Grade C (Good): C, C  
Grade D (Fair): D  
Grade E (Poor): 0

**P-Reviewer:** Batyrbekov K, Kazakhstan; Sipos F, Hungary; Tchilikidi KY, Russia

**Received:** August 17, 2023

**Peer-review started:** August 17, 2023

**First decision:** November 6, 2023

**Revised:** November 24, 2023

**Accepted:** December 22, 2023

**Article in press:** December 22, 2023

**Published online:** February 15, 2024



**You-Wang Lu**, Department of Dermatology and Venereology, The First Affiliated Hospital of Kunming Medical University, Kunming 650032, Yunnan Province, China

**Zhao-Li Ding**, Kunming Biological Diversity Regional Center of Large Apparatus and Equipments, Public Technical Service Center, Kunming Institute of Zoology, Kunming 650223, Yunnan Province, China

**Rui Mao**, School of Stomatology, Kunming Medical University, Kunming 650500, Yunnan Province, China

**Gui-Gang Zhao, Yu-Qi He, Xiao-Lu Li**, Genome Center of Biodiversity, Kunming Institute of Zoology, Chinese Academy of Science, Kunming 650223, Yunnan Province, China

**Jiang Liu**, Department of Reproduction and Genetics, The First Affiliated Hospital of Kunming Medical University, Kunming 650032, Yunnan Province, China

**Corresponding author:** Jiang Liu, PhD, Senior Scientist, Department of Reproduction and Genetics, The First Affiliated Hospital of Kunming Medical University, No. 295 Xichang Road, Kunming 650032, Yunnan Province, China. [liujiang6787@163.com](mailto:liujiang6787@163.com)

## Abstract

### BACKGROUND

Aberrant methylation is common during the initiation and progression of colorectal cancer (CRC), and detecting these changes that occur during early adenoma (ADE) formation and CRC progression has clinical value.

### AIM

To identify potential DNA methylation markers specific to ADE and CRC.

### METHODS

Here, we performed SeqCap targeted bisulfite sequencing and RNA-seq analysis of colorectal ADE and CRC samples to profile the epigenomic-transcriptomic landscape.

### RESULTS

Comparing 22 CRC and 25 ADE samples, global methylation was higher in the former, but both showed similar methylation patterns regarding differentially methylated gene positions, chromatin signatures, and repeated elements. High-grade CRC tended to exhibit elevated methylation levels in gene promoter regions

compared to those in low-grade CRC. Combined with RNA-seq gene expression data, we identified 14 methylation-regulated differentially expressed genes, of which only *AGTR1* and *NECAB1* methylation had prognostic significance.

### CONCLUSION

Our results suggest that genome-wide alterations in DNA methylation occur during the early stages of CRC and demonstrate the methylation signatures associated with colorectal ADEs and CRC, suggesting prognostic biomarkers for CRC.

**Key Words:** Colorectal cancer; Epigenomic alteration; Transcriptome; Methylation-regulated differentially expressed genes

©The Author(s) 2024. Published by Baishideng Publishing Group Inc. All rights reserved.

**Core Tip:** Despite enhanced global methylation in colorectal cancer (CRC), both adenoma and CRC share similar methylation patterns. High-grade CRC tends to exhibit elevated methylation levels in gene promoter regions compared to those in low-grade CRC. The integration of gene expression data identified 14 methylation-regulated differentially expressed genes, with *AGTR1* and *NECAB1* methylation being prognostically significant.

**Citation:** Lu YW, Ding ZL, Mao R, Zhao GG, He YQ, Li XL, Liu J. Early results of the integrative epigenomic-transcriptomic landscape of colorectal adenoma and cancer. *World J Gastrointest Oncol* 2024; 16(2): 414-435

**URL:** <https://www.wjgnet.com/1948-5204/full/v16/i2/414.htm>

**DOI:** <https://dx.doi.org/10.4251/wjgo.v16.i2.414>

## INTRODUCTION

Mortality due to colorectal cancer (CRC) has increased worldwide[1]. In China, this disease is the third most common malignancy and the fourth leading cause of cancer-related deaths[2]. CRC is caused by the accumulation of genetic and epigenetic modifications, and the adenoma (ADE)-carcinoma progression pathway accounts for 65%-70% of CRC cases [3]. Many epigenetic alterations have been identified using next-generation sequencing; however, only a few have been translated into clinical settings.

Increasing evidence suggests that epigenetic factors play important roles in CRC initiation and progression. Among the various epigenetic modifications, methylation has been the most extensively studied in this disease. Several studies have employed genome-wide methylation analyses to identify methylation biomarkers in CRC[4-9]. ADEs are precursors of CRC, and Luo *et al*[10] found that methylation modifications are early events during the progression from tubular ADEs to CRC. Moreover, ADEs share certain methylation modifications with CRC[11]. As such, the detection of methylation modifications occurring in ADE is crucial for identifying novel markers, which could improve CRC detection and prognosis. However, comprehensive studies on colorectal ADE and CRC with respect to DNA methylation and gene expression profiles are still lacking.

In this study, we used SeqCap targeted bisulfite sequencing to identify common epigenetic patterns in ADE and CRC. Compared to the widely used Illumina HumanMethylation EPIC BeadChip, this technology covers more CpG sites, thus achieving higher coverage[12]. Moreover, we used RNA-seq to detect the methylation signatures that orchestrate transcriptional dysregulation. Finally, we explored the clinical significance of these methylation markers using The Cancer Genome Atlas Colon Adenocarcinoma (TCGA-COAD) database.

## MATERIALS AND METHODS

### Clinical samples

Twenty-six colorectal tumors, 29 colorectal ADEs, and 18 adjacent normal tissues were collected from patients at the First Affiliated Hospital of Kunming Medical University (Kunming, China). Written informed consent was obtained from all patients for genomic analysis. This study was approved by the Ethics Committee of the First Affiliated Hospital of Kunming Medical University. Adjacent normal tissue samples (at least 5 cm away from the tumor) were obtained through surgical resection of the intestine. The clinical characteristics of the patients are shown in [Supplementary Table 1](#). All samples used in this study were obtained at the time of diagnosis, before treatment.

### DNA extraction

The genomic DNA of these tissues was extracted using the TIANamp Genomic DNA Kit (TIANGEN, China), and total RNA was extracted from the tissue samples using the RNA Easy Fast Tissue/Cell Kit (TIANGEN, China), according to the manufacturer's instructions. The concentration and quality of DNA and RNA were assessed using a Qubit

fluorometer (Thermo Fisher Scientific).

### **SeqCap targeted bisulfite sequencing**

An EZ Methylation-Direct Kit (Zymo Research, CA, United States) was used to perform bisulfite conversion. To construct the target bisulfite sequencing library, we used the NimbleGen SeqCap Epi Enrichment System to capture the target genomic regions according to the manufacturer's protocols. Paired-end sequencing (100 bp) was performed on an Illumina HiSeq 2500 platform (Illumina, San Diego, CA, United States) according to the manufacturer's protocol.

### **Bisulfite sequencing data preprocessing**

FastQC (v0.11.3) was used to assess sequence quality and generate quality reports. Bisulfite sequencing reads were pre-processed using Trimmomatic (v0.39). Both 6 bp Illumina adapters and low-quality sequences (base quality < 20) were filtered out prior to the analysis. The remaining reads were aligned against the human genome (GRCh38) using Bismark (v0.23.1)[13] with the following parameter settings: -bowtie2 -parallel 4 -N 0 -L 20 -quiet -un. The methylation status of each CpG was determined using the Bismark methylation extractor function, and only methylation within the CpG context was retained for further analysis (Supplementary Table 2).

The R package methylKit (v1.20.0)[14] was used for the differential methylation analysis. CpG sites with low (< 5') or extremely high (> 99<sup>th</sup> percentile) coverage were excluded. CpG sites mapped to X and Y chromosomes or mitochondria were removed, and those shared by all samples were retained for further analysis. We merged the CpG site methylation profiles of the 61 samples based on CpG coordinates, yielding 822353 CpG sites covered by all samples. CpG sites that overlapped with an SNP from dbSNP build 151 were removed, and 811441 CpG sites were retained for further analysis.

For the analysis of differentially methylated positions (DMPs), an absolute methylation difference > 20% and a false discovery rate (FDR) < 0.05 were used. For the analysis of differentially methylated regions (DMRs), the genome was tiled based on a window size of 200 bp with a step size of 200 bp, and the CpG methylation rates were averaged across multiple sites within the region. Next, the differences between the two groups were tested using the calculated DiffMeth function provided by methylKit. The DMRs were determined using the following thresholds: > 5 CpGs in the DMRs, absolute methylation difference > 10%, and FDR < 0.05.

### **ChromHMM analysis**

Chromatin state annotations were generated using ChromHMM (v1.18)[15]. We generated an 18-state model with 11 healthy human tissues and one cell line using the LearnModel function to predict the chromatin state[15].

### **Genomic enrichment analysis**

The LOLA package (v1.24.0)[16] was used to annotate the methylation data using histone marks, chromatin states, and repetitive DNA element databases. Genomic enrichment analyses were performed as previously described[17]. Histone and chromatin states were derived from 11 healthy human tissues and one cell line from the NIH Roadmap Epigenomics region data[18]. Repetitive DNA element databases were obtained using the UCSC table browser.

### **Annotation to genomic locations**

DMPs and DMRs were annotated to hg38 CpG and gene features using the annotatr package (v1.20.0). TCGA COAD-derived DMPs were annotated in the IlluminaHumanMethylation450kanno.ilmn12.hg19 package (v1.40.0).

### **RNA-seq data analysis**

RNA-sequencing libraries were constructed using a TruSeq RNA Sample Preparation Kit (Illumina). Transcriptome data were mapped using hisat2 (v2.2.1). The read counts were quantified using featureCounts (v2.0.0). Finally, differentially expressed genes (DEGs) were identified using DESeq2 (v1.36.0) with an FDR < 0.05.

### **HM450K DNA data analysis**

TCGA data were obtained using the TCGA biolinks package (beta values at the CpG sites were obtained). HM450K DNA data were processed using the ChAMP package[19].

### **TCGA gene expression data analysis**

TCGA mRNA expression data for colon cancer were also obtained using the TCGAbiolink package. The expression matrix was normalized using DESeq2 (v1.36.0). Finally, the DEGs were screened using DESeq2.

### **Identification of methylation-regulated DEGs**

First, we identified differentially methylated genes (DMGs) located in the gene promoter. We then overlapped the DMGs with the DEGs, and the remaining genes were candidate methylation-regulated DEGs (meDEGs). Candidate meDEG expression and methylation analyses were performed using TCGA HM450 microarray and RNA-seq data from COAD. Hypermethylated genes and those for which expression was downregulated were selected for further analysis. Spearman rank correlation analysis was performed on the beta values and gene expression levels for these gene-probe pairs using the psych package. The threshold was set at rho values < -0.2 and an FDR < 0.05.

### **Survival analysis**

Survival analysis was performed using survminer and survivor packages. Kaplan-Meier curves were used to compare the

survival between the high- and low-methylation groups. The median methylation level of the selected gene was used as the cutoff point.

## RESULTS

### **Methylation alterations in ADE and CRC**

To investigate the methylation changes associated with ADE and CRC, we compared the methylation patterns in these tissues with those in normal samples. The average methylation values of ADE and normal samples were 0.42 and 0.41, respectively, and we found no significant differences in methylation at CpG sites between these groups (Wilcoxon rank-sum  $P = 0.75$ ; [Figure 1A](#)). However, principal component analysis (PCA) clustering suggested differences between the ADE and control groups, as they were separated across the most meaningful dimensions ([Figure 1B](#)). The average methylation values of CRC and normal samples were 0.45 and 0.40, respectively, and CRC samples tended to have higher methylation values (Wilcoxon rank-sum test,  $P = 0.12$ ; [Figure 1C](#)). Moreover, PCA clustering showed some overlap between the CRC and normal groups ([Figure 1D](#)).

We then performed differential methylation analysis with a specific threshold (absolute methylation difference  $> 20\%$  and  $FDR < 0.05$ ) to define the DMPs between ADE and CRC. We identified substantial alterations in both conditions, identifying 48291 DMPs associated with ADE (30009 hypermethylation and 18282 hypomethylation; [Figure 1E](#); a list of ADE DMPs is available in [Supplementary Table 3](#)) and 95887 associated with CRC (63107 hypermethylation and 32780 hypomethylation; [Figure 1F](#); a list of CRC DMPs is available in [Supplementary Table 4](#)). Hypermethylation was more frequently observed at CpG sites in both ADE and CRC samples.

### **DMP locations in ADE and CRC**

Hypermethylation was the predominant event in both ADE and CRC [accounting for 62% (30009/48291) and 66% (63107/95887) of the changes, respectively; [Figure 2A](#)]. To investigate the possible functional consequences of methylation alterations, we first annotated the DMPs with CpG island features. We observed that hypermethylation occurred more commonly at CpG islands in ADE and CRC, with Fisher's  $P < 0.001$  and odds ratios (ORs) = 2.7 and 5.3, respectively. In contrast, hypomethylation in ADE and CRC was more common at open sea and shelf locations, with Fisher's  $P < 0.001$  and ORs of 2.4 and 2.6 for open sea and ORs = 2.6 and 2.3 for shelf locations, respectively ([Figure 2B](#)).

Regarding gene locations, CRC and ADE displayed similar patterns. DMPs comprising hypermethylation occurred preferentially at 1-5k regions and 5' untranslated regions (UTRs), with Fisher's  $P < 0.001$ , ORs = 1.7 and 1.4 for 1-5k regions, and ORs = 1.8 and 1.4, respectively, for 5'UTRs. DMPs comprising hypomethylation were enriched at 1-5k and intergenic and intronic sequences, with Fisher's  $P < 0.001$ , ORs = 2.3 and 2.0 for 1-5k regions, ORs = 2.1 and 2.2 for intergenic sequences, and ORs = 1.6 and 1.6 for intronic sequences, respectively ([Figure 2C](#)). Subsequently, we found that the hypermethylated DMP count was higher in both ADE and CRC, but the number of CpGs that mapped to genes was similar. These results suggest that hypomethylation is more widespread across different genes under both conditions ([Figure 2D](#),  $P < 0.001$ ).

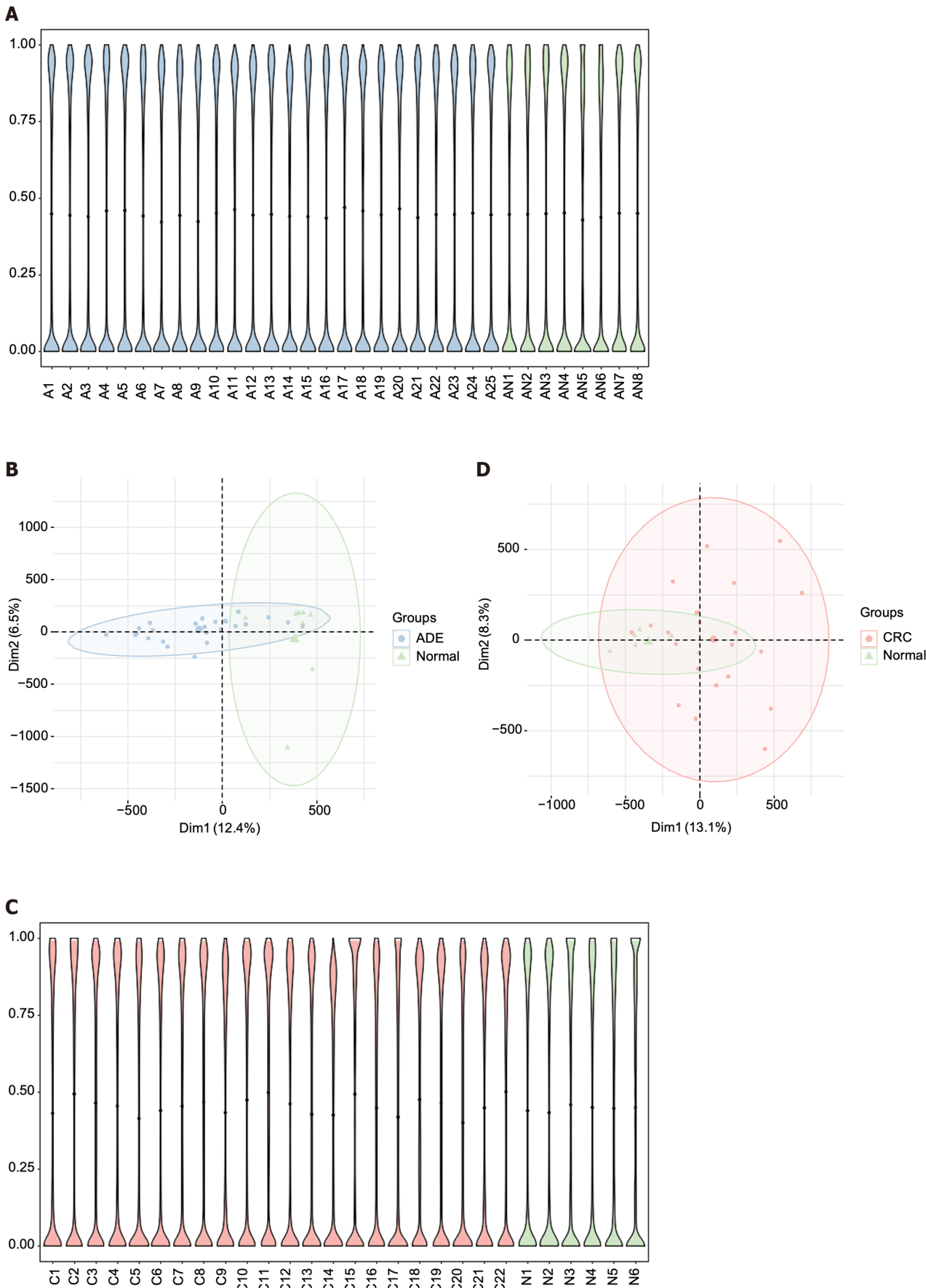
Next, we performed an intersection analysis of DMPs in ADE and CRC. To this end, we applied the SuperExactTest[20] to compare the co-occurrence patterns of DMPs between these samples ([Figure 2E](#) and [Supplementary Table 5](#)). These intersections were all significantly over-enriched (all  $P < 0.001$ ), with common CRC- and ADE hyper-DMPs and common CRC-hypo and ADE-hypo DMPs displaying the highest degree of overlap. Specifically, 82% (24639/30009) of the hypermethylated DMPs in ADE were shared with CRC.

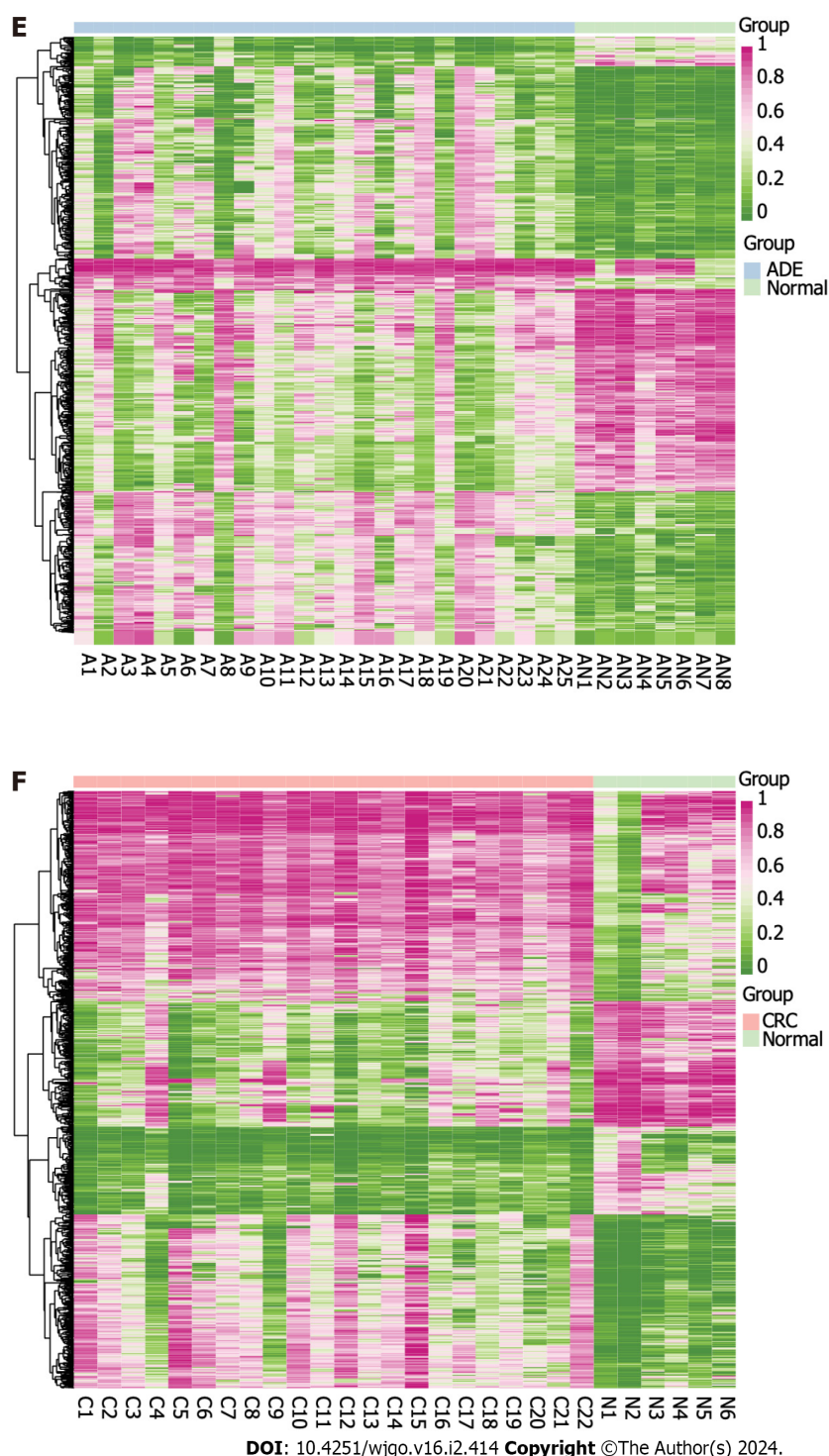
### **Chromatin landscape of CRC and ADE methylation alterations**

To assess the enrichment of regulatory regions, we first performed over-enrichment analyses using the LOLA package based on CRC and ADE-related DMPs with different histone modifications. Regarding ADE-associated methylation changes, we observed that hypermethylation sites were enriched in H3K27me3 modifications and active enhancer/promoter-associated H3K4me1 ([Figure 3A](#)). Furthermore, we assessed the over-enrichment of ADE DMPs in different chromatin states ([Figure 3B](#)). The ADE-associated hypermethylated DMPs preferentially occurred at bivalent transcription start sites (states 14) and zinc-finger (ZNF) and enhancer sites (states 10 and 11). In addition, ADE-associated hypermethylated sites were enriched in heterochromatic regions and ZNF genes/repeats (states 12 and 13). Regarding ADE-associated hypomethylation, the most enriched chromatin states (15-18) involved repressive functions, such as polycomb-associated sites. CRC exhibited similar methylated regulatory regions as those enriched in ADE ([Figures 3C and D](#)). Furthermore, hypomethylated DMPs were significantly enriched at H3K27me3 in normal colorectal tissues.

Next, we performed over-enrichment analyses of CRC- and ADE-related DMPs with repetitive DNA elements ([Figure 3E](#)). In ADE and CRC, hypomethylation preferentially occurred at short interspersed retrotransposable elements, long interspersed retrotransposable elements (LINEs), long terminal repeat elements (LTRs), DNA repeat elements, rolling circles, and satellite sites. Additionally, the hypomethylation of DMPs was associated with tRNA.

Finally, we performed HOMER analysis to identify the enrichment of DMPs in the transcription factor (TF) motifs. We observed both similarities and differences between the ADE and CRC groups ([Figure 3F](#)). The hypermethylation of DMPs in ADE was associated with homeobox TF motifs (Fisher's  $P < 0.001$ , OR = 7.4) and T-box motifs (Fisher's  $P = 0.001$ , OR = 2.7). The hypomethylation of DMPs in ADE was enriched in bHLH TF motifs (Fisher's  $P < 0.001$ , OR = 6.9). In CRC, hypermethylation particularly affected MADS and homeobox TF motifs (Fisher's  $P < 0.001$ , ORs = 33.2 and 4.8, respectively), whereas hypomethylation was involved in ETS and bZIP TF sites (Fisher's  $P < 0.01$ , ORs = 13.2 and 3.5).



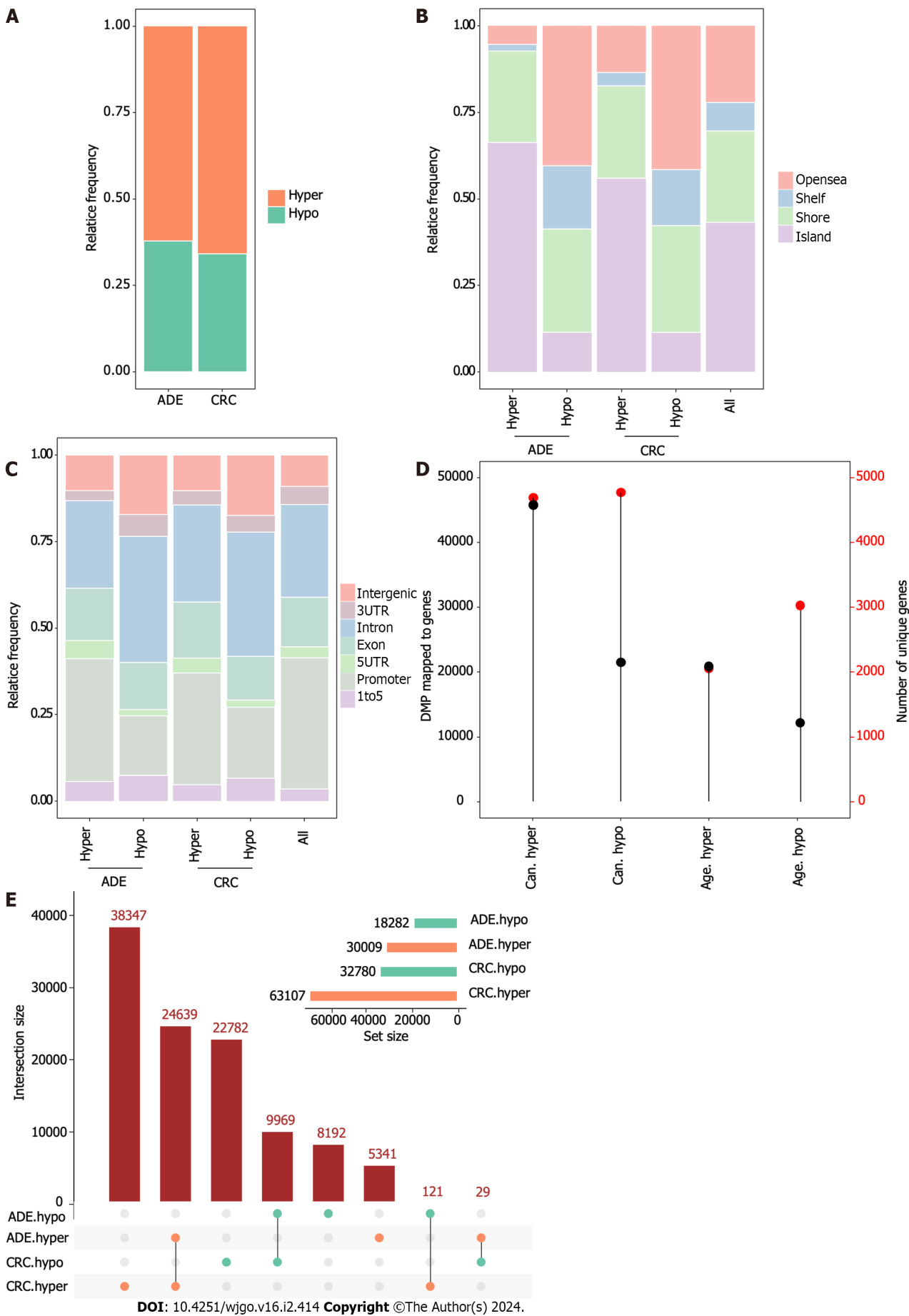


**Figure 1 Adenoma and colorectal cancer methylation landscapes.** A: Violin plots of global methylation levels of all CpG sites across the adenoma (ADE) and normal samples (A, adenoma; AN, adjacent normal); B: Principal component analysis (PCA) plots of WGBS data showing the distribution of ADE and normal samples according to CpG site methylation levels; C: Violin plots of global levels of methylation of all CpG sites across colorectal cancer (CRC) and normal samples (C, colorectal cancer; N, normal); D: PCA plots of WGBS data showing the distribution of CRC and normal samples according to CpG site methylation levels; E: Heatmap of the methylation values of the top 1000 differentially methylated positions (DMPs) between the ADE and normal group; F: Heatmap of the methylation values of the top 1000 DMPs between the ADE and normal group. ADE: Adenoma; CRC: Colorectal cancer.

These findings highlight the clear functional discrepancy between ADE and CRC in terms of TF-motif enrichment.

### Hypermethylated DMRs occur primarily at promoters in ADE and CRC

To identify DMRs in ADE and CRC, the WGBS dataset was analyzed using methylkit with a tile window size of 200 bp. We detected 6219 hypermethylated DMRs (hyperMe-DMRs) and 3365 hypoMe-DMRs in ADE (Supplementary Table 6) and 10424 hyperMe-DMRs and 4817 hypoMe-DMRs in CRC (Supplementary Table 7). We then used CIRCOS to visualize the data as a multilayer circular plot, shown in Figures 4A and B. The outer layer contained information including the



**Figure 2** Differentially methylated positions in adenoma and colorectal cancer. A: Barplot showing the relative frequency of hypermethylated and

hypomethylated differentially methylated positions (DMPs) in adenoma (ADE) and colorectal cancer; B and C: Barplots showing the distribution of DMPs on CpG island features and gene-region location features; D: Lollipop plots showing the number of DMPs (left vertical axis, black dots) with the number of genes to which DMPs were uniquely mapped (right vertical axis, red dots); E: UpSet plot indicating the size of DMP sets and the intersections based on their overlaps. ADE: Adenoma; CRC: Colorectal cancer; DMP: Differentially methylated position.

chromosome, DMR position, and change in the methylation value (-1 to 1). The inner layer lists changes in CpG island methylation.

In this study, hypermethylation was the predominant event at the DMR level in both ADE and CRC. The majority (75.5%) of the hyperMe-DMRs were located in the promoter regions of the genes, whereas hypoMe-DMRs were more likely to be located in the intergenic and intron regions (Figure 4C). To identify convergent DMRs located in gene promoter regions, we applied UpSet plots to determine the overlap in hypoMe-DMRs and hyperMe-DMRs between ADE and CRC. We found 2265 hypoMe-DMRs and 452 hyperMe-DMRs that were shared between the two conditions (Figure 4D).

### Functional enrichment analyses of DMRs in promoters

To reveal the biological functions of DMRs, we performed Kyoto Encyclopedia of Genes and Genomes (KEGG) and Gene Ontology (GO) analyses of the related genes. GO enrichment analysis revealed that these genes were mainly enriched in homophilic cell adhesion *via* plasma membrane adhesion molecules and the neuronal cell body and DNA-binding transcription activator activity (Figure 5A). The KEGG enrichment analysis results showed that these genes were mainly enriched in the calcium signaling pathway, neuroactive ligand-receptor interactions, and other pathways (Figure 5B).

### Gene expression alterations in ADE and CRC

We next performed RNA-seq analysis of 13 ADE, 10 CRC, and nine normal samples to detect transcriptional differences. First, we analyzed the transcriptional differences between ADE and normal samples. By applying t-Distributed Stochastic Neighbor Embedding (t-SNE) analysis to the expression matrix of the top 2000 most variable genes, we classified the samples into two groups (Figure 6A). We used the “DESeq2” R package for differential expression analysis, with cut-off criteria of an adjusted  $P < 0.05$  and  $|\log_2FC| > 1$ . We identified 2399 DEGs between the ADE and normal samples, of which the expression levels of 1311 were upregulated and those of 1088 were downregulated (Figures 6B and C).

We then analyzed the transcriptional differences between CRC and normal samples. t-SNE analysis of the expression matrix of the top 2000 most variable genes revealed mixed samples between the CRC and normal groups (Figure 6D). We identified 460 DEGs between CRC and normal samples, including 173 for which expression was upregulated and 287 for which expression was downregulated (Figures 6E and F).

By integrating the DEG analysis of ADE and CRC samples, we identified 235 genes (Figure 6G), including 177 for which expression was downregulated and 58 for which expression was upregulated in both CRC and ADE samples. To identify meDEGs, we applied UpSet plots to identify the overlap between hypoMe-DMRs and genes for which expression was upregulated, as well as hyperMe-DMRs and genes for which expression was downregulated. We finally identified 24 meDEGs, including 21 hypermethylated and three hypomethylated genes (Figure 6H).

### Integrative analysis identifies meDEGs in CRC

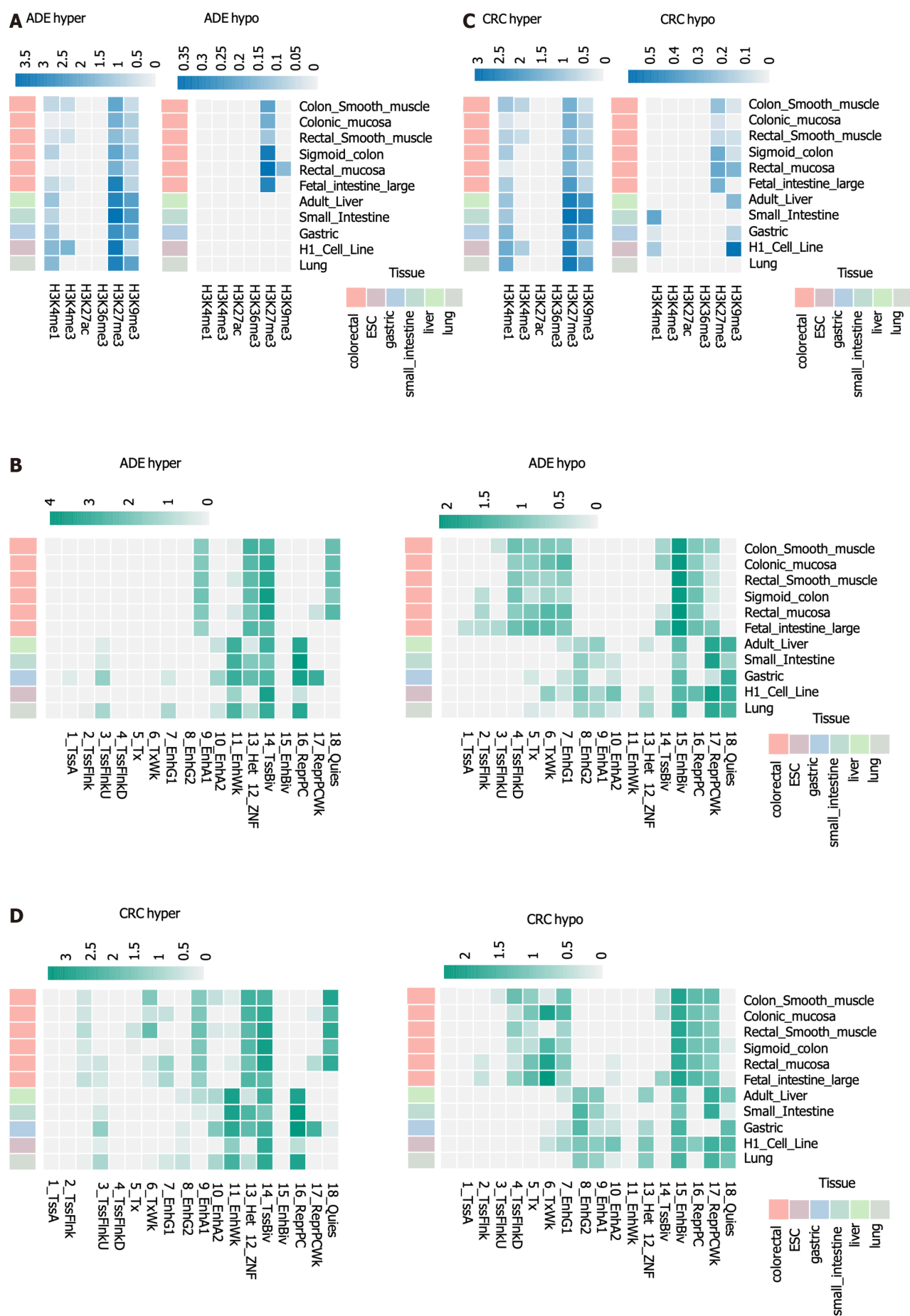
To validate the meDEGs, we analyzed their methylation and expression levels using the COAD dataset of TCGA. Of the 24 meDEGs, all 24 genes were found to be expressed in the COAD RNA-seq dataset, with expression levels of three genes being upregulated and those of 21 being downregulated in CRC (Figure 7A). All gene expression patterns were consistent with those in our dataset.

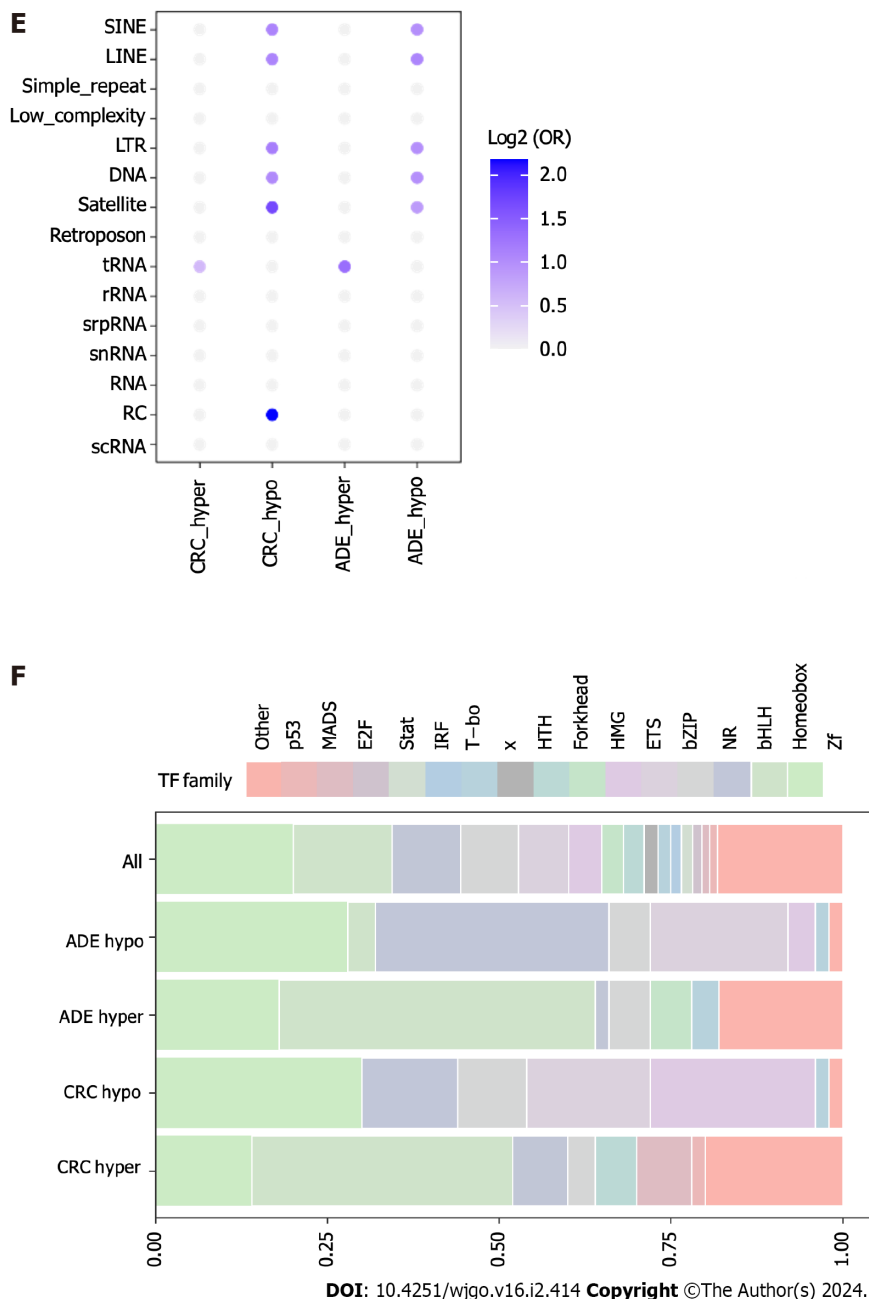
We further examined the methylation status of meDEGs in the COAD 450K dataset and found methylation data for 18 of the 24 genes. Among these, 11 genes were hypermethylated in CRC tissues (Figure 7B). All methylation patterns were consistent with those observed in our dataset. Methylation levels of the seven meDEGs showed a significant and highly negative correlation with their expression ( $FDR < 0.05$ , Spearman's  $\rho < -0.2$ ; Figure 7C). Next, to explore the functional relationships among the meDEGs, we used Gene-MANIA to construct a protein-protein interaction/network for the meDEGs, and the results are shown in Figure 7D.

To further explore the clinical significance of the meDEGs, we performed a survival analysis based on the seven meDEGs in the COAD dataset. Our results showed that the *AGTR1*-low-methylation group had a higher survival rate than the high-methylation group (Figure 7E). Similarly, the *NECAB1*-low-methylation group had a higher survival rate than the high-methylation group (Figure 7F).

### Comparative analyses of methylation in CRC and ADE of different grades

We divided ADE into high-grade adenoma (HGA) and low-grade adenoma (LGA) groups based on the criterion provided by Lieberman *et al* [21]. We divided CRC into high-grade cancer (HGC) at stage  $\geq$  IIB and low-grade cancer (LGC) at stage  $<$  IIB. More than 60% of DMRs that were observed in both LGA (75.4%, 1535/2035) and HGA (56.1%, 1499/2674) were hyper-methylated compared to the status in normal tissues (Figure 8A, Supplementary Tables 8 and 9). However, with LGA as the reference, most DMRs observed in HGA were hypo-methylated (64.6%, 737/1140; Figure 8A, Supplementary Table 10). Additionally, there were substantial overlaps between genes with DMRs in LGA compared to normal tissues and those compared to HGA, suggesting a similar epigenetic process (Figure 8C). In CRC, more than 70% of DMRs that were observed in both LGC (71.6%, 2245/3136) and HGC (78.5%, 2920/3721) were hyper-methylated



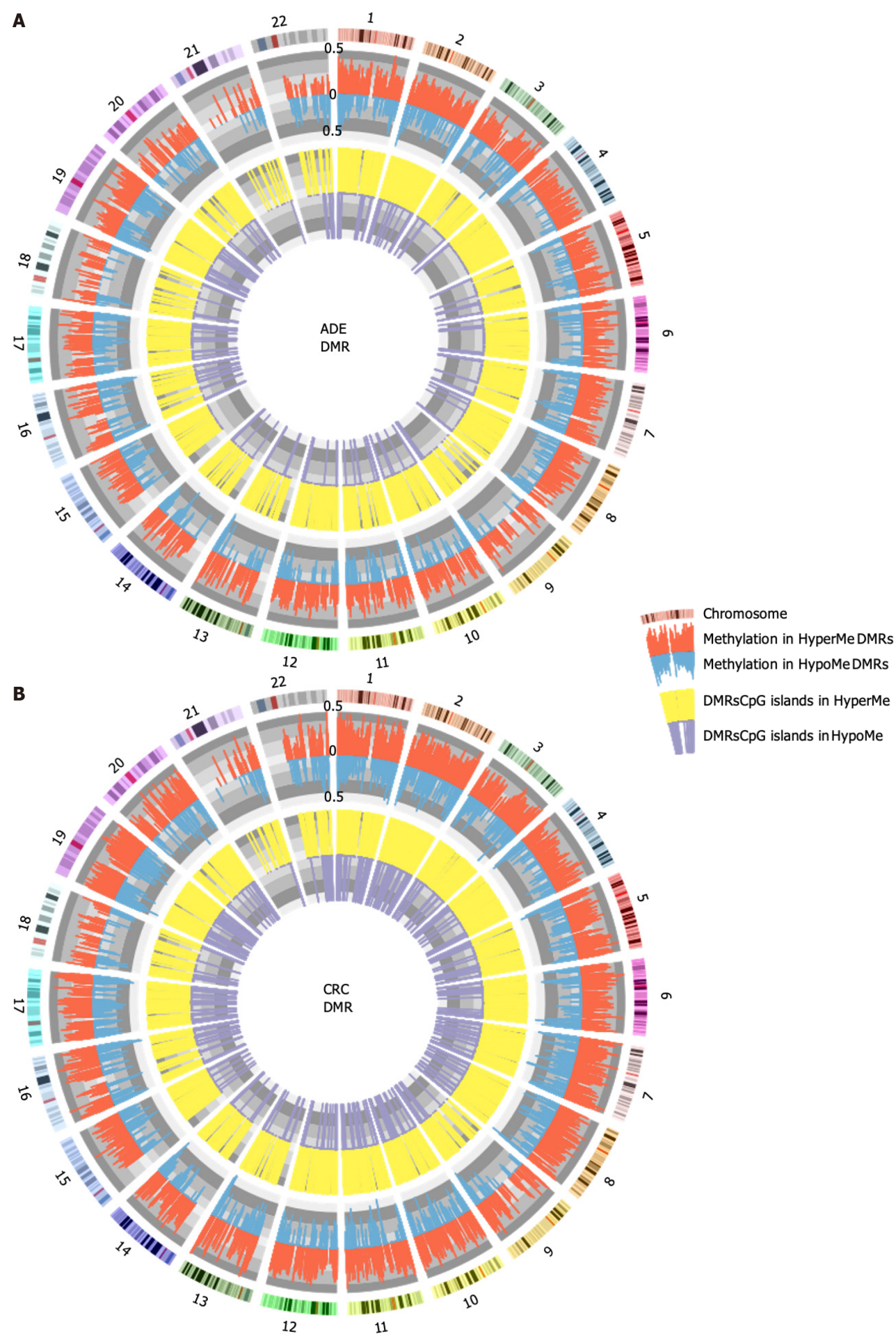


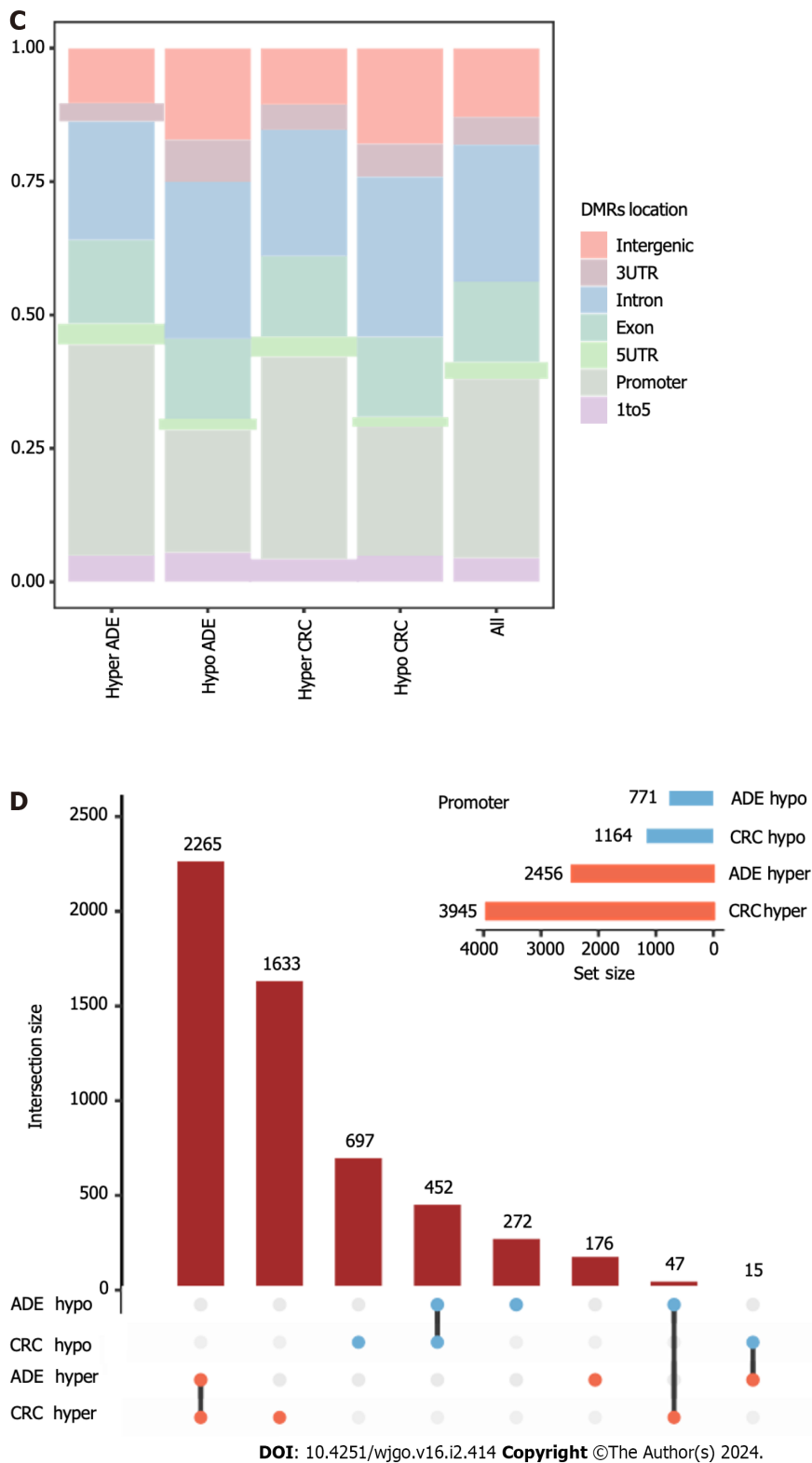
**Figure 3 Chromatin landscape of adenoma and colorectal cancer methylation alterations.** A: Heatmap of histone mark enrichment at adenoma (ADE) differentially methylated positions (DMPs); B: Heatmap of the enrichment of 18 states of chromatin at ADE DMPs; C: Heatmap of histone mark enrichment at colorectal cancer (CRC) DMPs; D: Heatmap of the enrichment of 18 states of chromatin at CRC DMPs; E: Bubble plots showing enrichment locations of repetitive DNA classes; F: Barplots showing the relative numbers of transcription factors at the genomic locations of ADE and CRC DMPs. Only the top 50 most significantly enriched factors from each set were selected.

compared to the status normal tissues (Figure 8B, Supplementary Tables 11 and 12). Moreover, with LGC as the reference, most DMRs observed in HGC were hyper-methylated (88.3%, 1105/1251; Figure 8B, Supplementary Table 13). In addition, there were substantial overlaps between genes with DMRs in LGC compared to normal tissues and those compared to HGC, suggesting a similar epigenetic process (Figure 8D).

The meDEG methylation patterns between ADE of different grades (Figure 8E) and CRC (Figure 8F) of different grades were similar. NECAB1 was methylated in LGA and HGA compared to the status in normal tissues (Figure 8G). AGTR1 was hyper-methylated in LGA, but not in HGA, compared to the status in normal tissues (Figure 8G). In CRC, NECAB1 was methylated in LGC and HGC compared to the status in normal tissues (Figure 8H). AGTR1 was hyper-methylated in HGC, but not in LGC, compared to the status in normal tissues (Figure 8H).

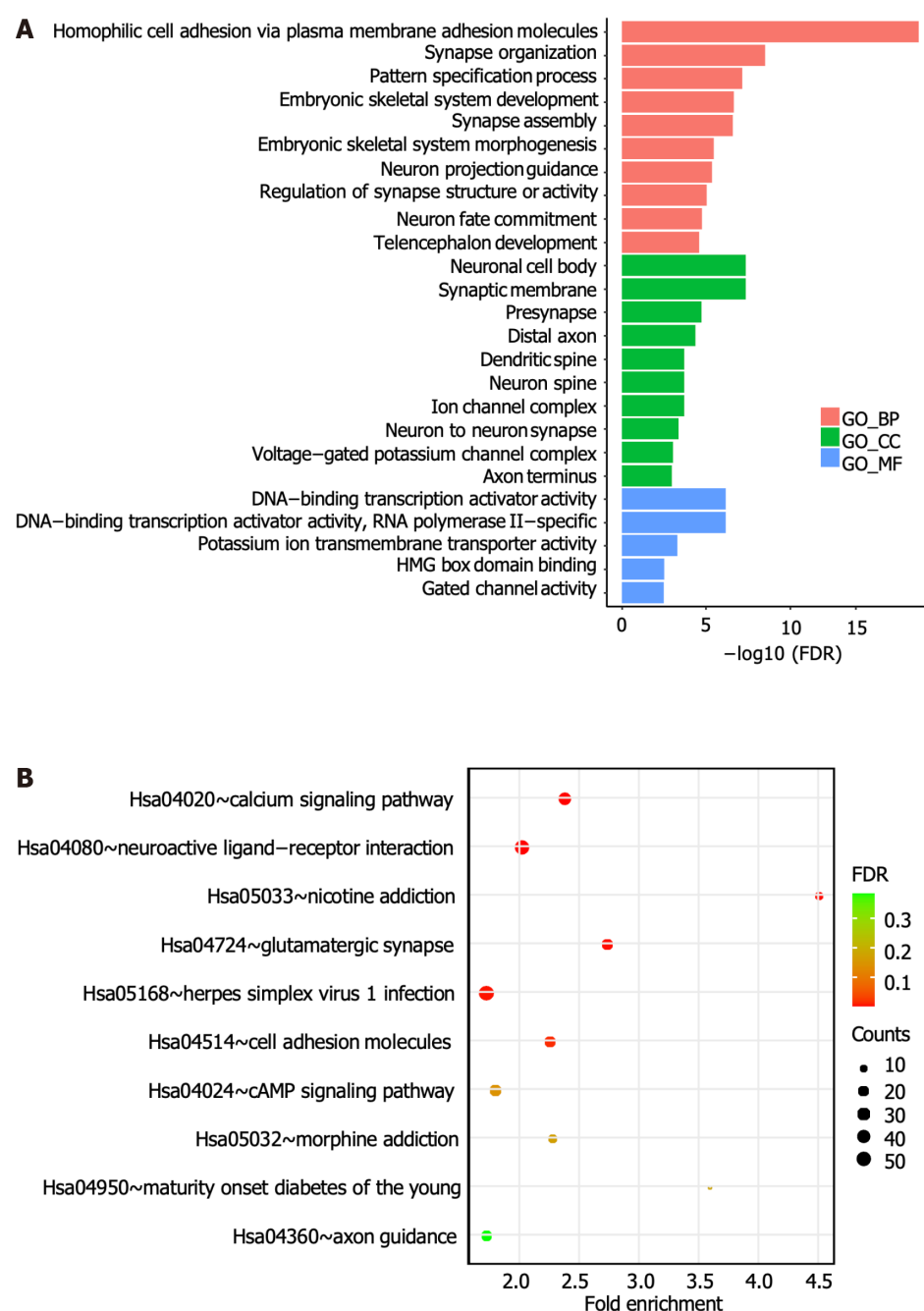
To assess the reproducibility of our study, we evaluated the Ten-Gene Methylation Signature developed by Patai *et al* [22]. In ADE, 8/10 methylation signatures were hyper-methylated in LGA and HGA compared to the status in normal tissues (Supplementary Table 14). In CRC, 8/10 methylation signatures were hyper-methylated in LGC and HGC compared to the status in normal tissues (Supplementary Table 15). Our results were thus highly consistent with the findings previously reported[22].





**Figure 4 Characteristics of differentially methylated regions.** A: Circular plot of differentially methylated regions (DMRs) in adenoma; B: Circular plot of DMRs in colorectal cancer; C: Barplots showing the distribution of DMRs based on gene-region location features; D: UpSet plot indicating the DMR size of the sets and the intersections based on their overlaps. ADE: Adenoma; CRC: Colorectal cancer; DMRs: Differentially methylated regions.

Finally, we utilized the dataset GSE32323 to investigate the effects of restoring the methylation status on *AGTR1* and *NECAB1* expression, based on 5-aza-2'-deoxycytidine treatment. In the HT29 cell line, demethylation treatment partially restored the mRNA expression levels of *AGTR1* and *NECAB1*, indicating that DNA hypermethylation seems to play a role in the regulation of these genes (Supplementary Figure 1). A similar tendency was also observed in the HCT116 cell line (Supplementary Figure 1).



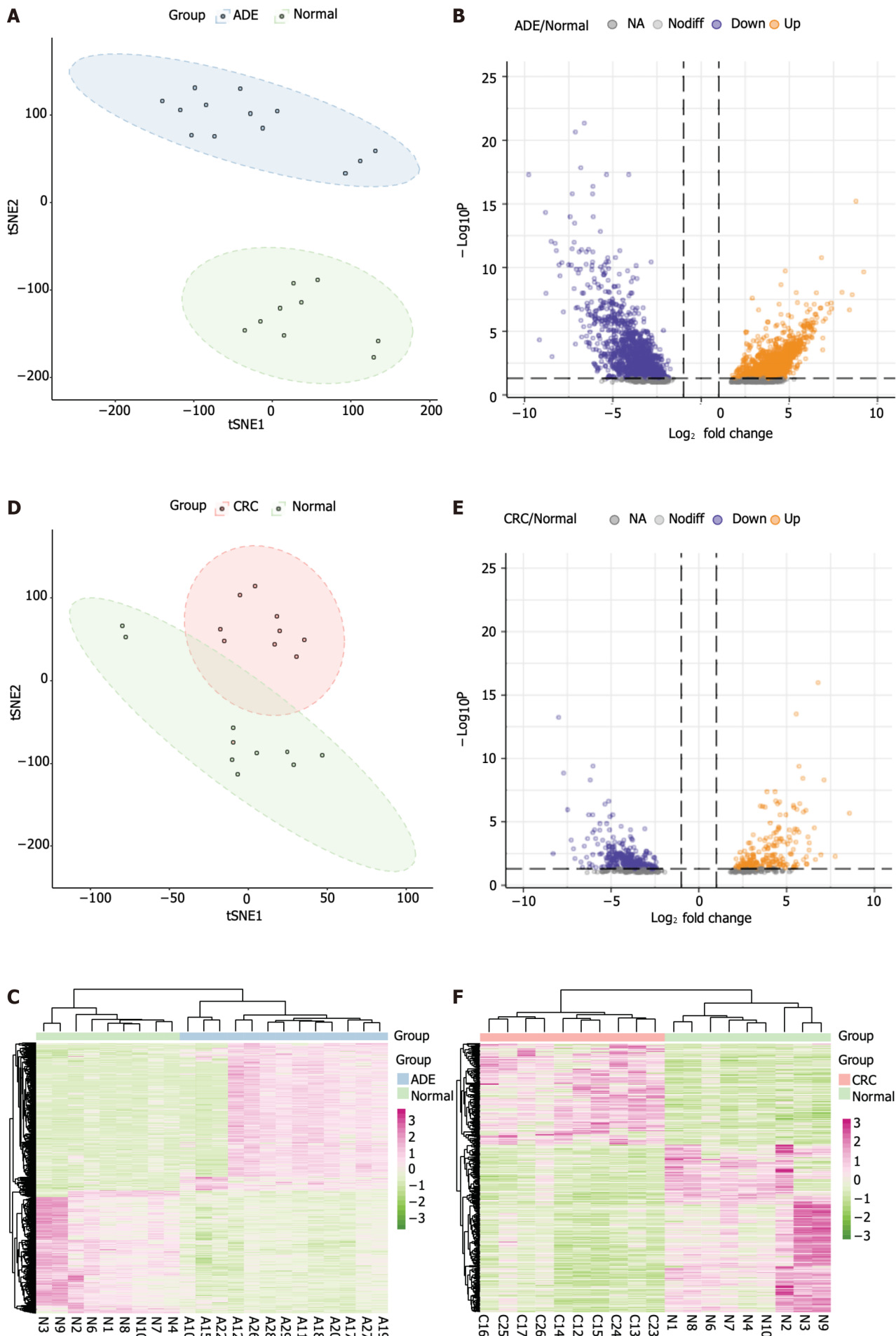
**Figure 5 Gene Ontology and Kyoto Encyclopedia of Genes and Genomes pathway enrichment analyses.** A: The bar plot shows the Gene Ontology analysis of 1650 differentially methylated genes; B: Bubble plot showing the Kyoto Encyclopedia of Genes and Genomes analysis of differentially methylated genes. BP: Biological process; CC: Cellular component; MF: Molecular function; FDR: False discovery rate.

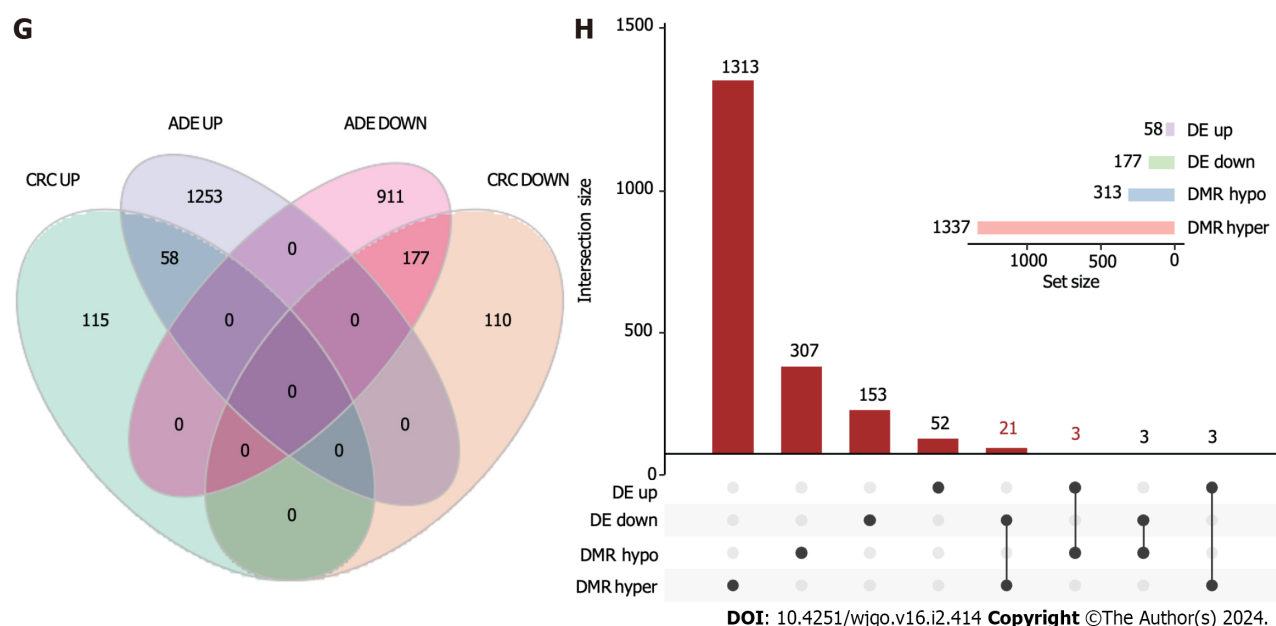
## DISCUSSION

We profiled the global methylation status of 22 CRC and 25 ADE samples and found that the methylation level in CRC was higher than that in ADE. Moreover, these sample types showed similar methylation patterns with respect to the DMP gene locations, chromatin signatures, and repeated elements. Combined with RNA-seq gene expression data, we identified 14 meDEGs, of which only *AGTR1* and *NECB1* methylation patterns had prognostic significance.

In our study, we found that hypermethylation at CpG sites is more prevalent in CRC and ADE than in normal tissues, which is consistent with the results of previous studies[23,24]. McInnes *et al*[23] found that 73% of differentially methylated CpGs were hypermethylated in CRC at the CpG-dinucleotide level. Further, Kibriya *et al*[24] found that 600 of 875 autosomal loci were hypermethylated.

However, some other studies have reported contradictory results[4,6,10]. Gu *et al*[4] found that 87% of methylated CpG sites are hypomethylated at the CpG-dinucleotide level. These discrepancies could be attributed to differences in detection methods and sample sizes. The overall methylation level in ADE is lower than that in CRC, indicating that aberrant methylation occurs at the earliest stages of tumor initiation[6]. Luo *et al*[10] reported that nearly 40% DMPs were





**Figure 6 Methylation-regulated differentially expressed gene identification.** A: t-Distributed Stochastic Neighbor Embedding (t-SNE) plot of adenoma (ADE) and normal samples; B: Volcano plot of differentially expressed genes (DEGs) ( $\log_2FC > 1$ , adjusted  $P < 0.05$ ) between ADE and normal samples; C: Heatmap of DEGs between ADE and normal samples; D: t-SNE plot of colorectal cancer (CRC) and normal samples; E: Volcano plot of DEGs ( $\log_2FC > 1$ , adjusted  $P < 0.05$ ) between CRC and normal samples; F: Heatmap of the DEGs between ADE and normal samples. The lower horizontal axis shows the sample names, the left vertical axis shows the clusters of DEGs, and the right vertical axis represents gene names. Red represents genes for which expression was upregulated, and green represents those for which expression was downregulated; G: Venn plot of DEGs between ADE and CRC; H: UpSet plot of methylation-regulated DEGs. t-SNE: t-Distributed Stochastic Neighbor Embedding; ADE: Adenoma; CRC: Colorectal cancer; DMRs: Differentially methylated regions.

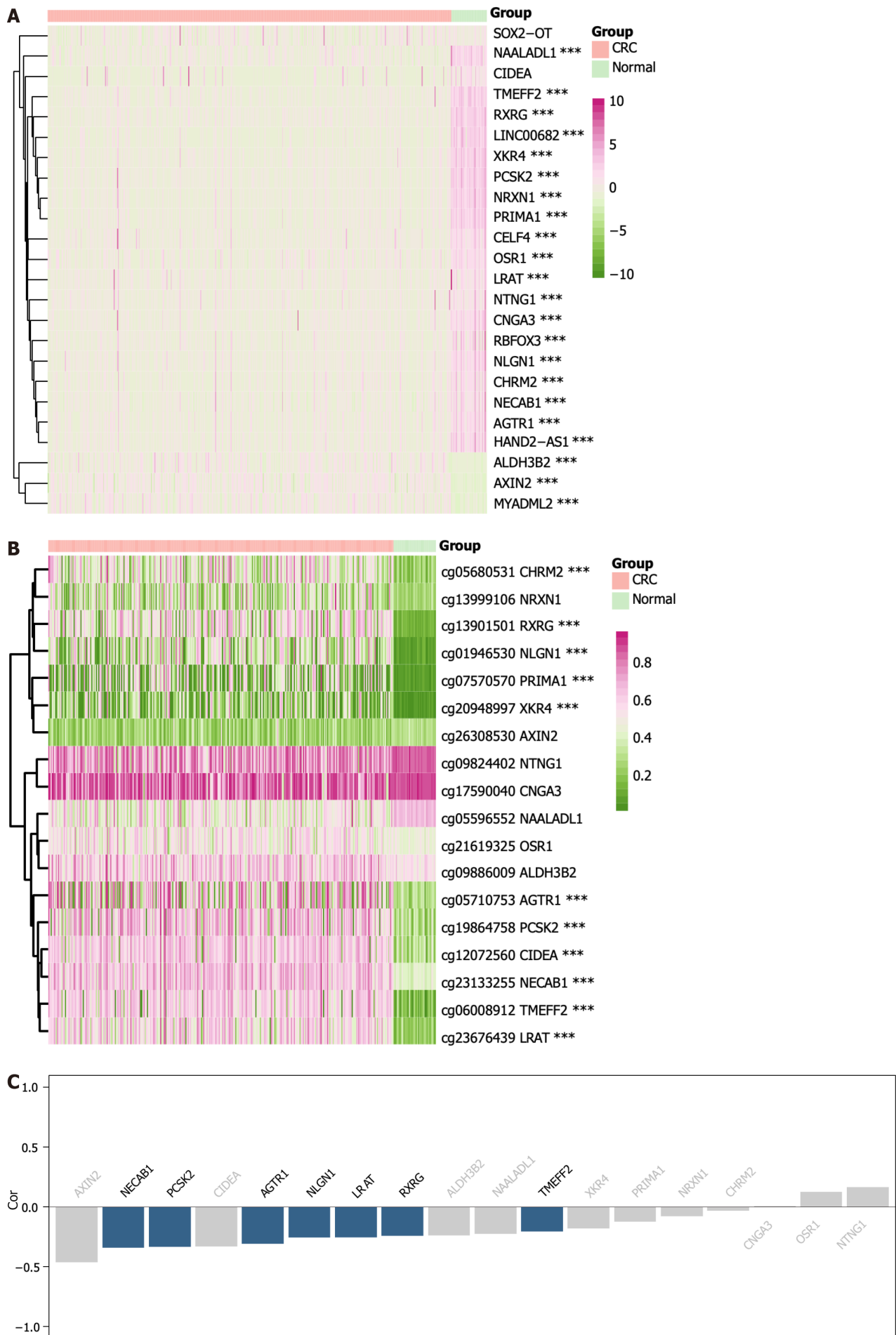
hypermethylated, and 60% of DMPs were hypomethylated in ADEs, compared to the status in the normal colon mucosa. Moreover, genome-wide hypermethylation appears to continuously increase during ADE-cancer sequencing[25].

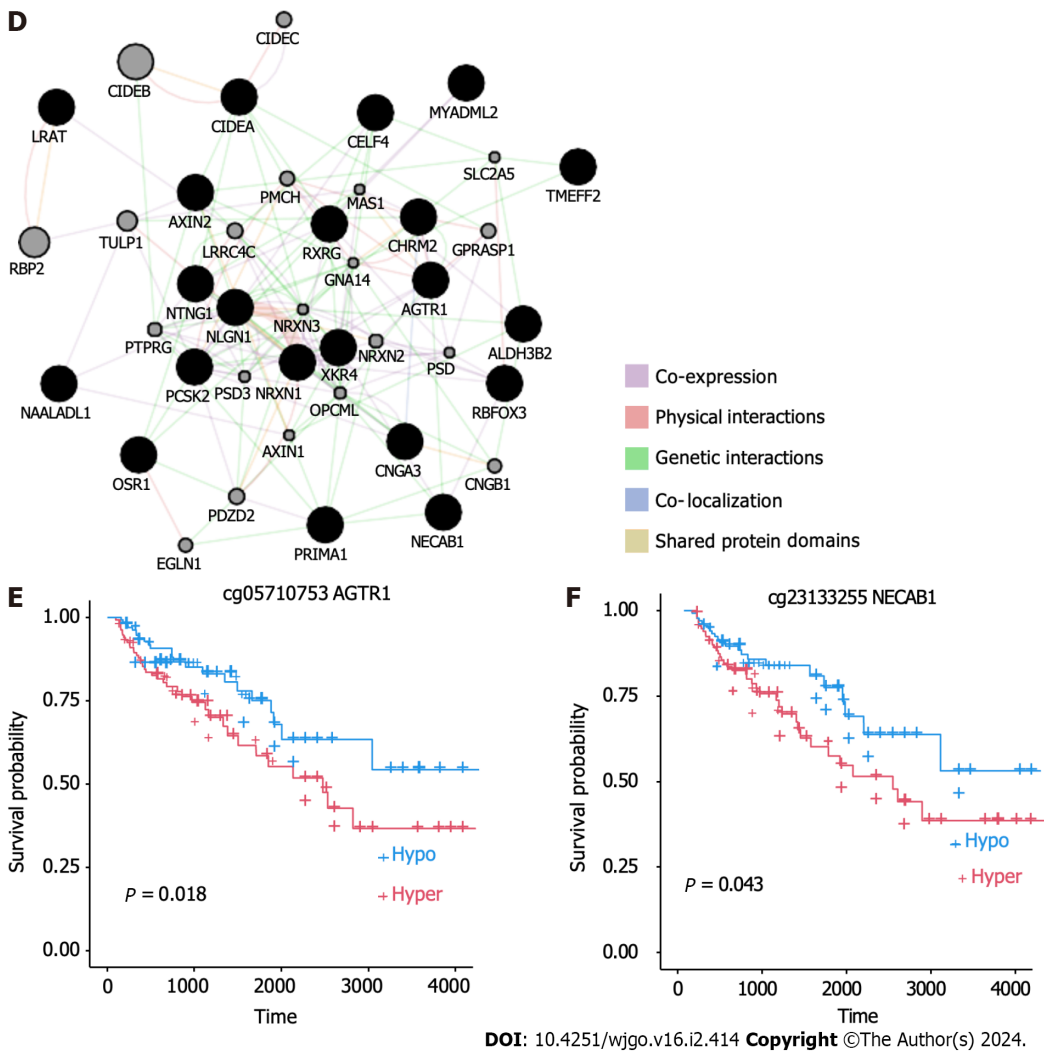
The methylation patterns observed in the ADE and CRC samples were similar. Hypermethylated DMPs were mainly located at CpG islands, whereas hypomethylated DMPs were largely located in the open sea region. These findings were consistent with those reported by Naumov *et al*[7]. Both CRC and ADE showed hypermethylation enrichment in the bivalent enhancer state regions (dominant H3K27me3) and heterochromatin state regions (dominant H3K9me3). H3K27me3 is often associated with transcriptionally repressed chromatin[26], which often occurs during tumorigenesis[27]. Some methylation aberrations were enriched exclusively in the normal colorectum. Bormann *et al*[28] reported that ADEs retain cellular methylation signatures, which is consistent with our results. We also observed the hypomethylation of short interspersed retrotransposable, LIN, LTR, and satellite regions in both ADE and CRC. LINE-1 expression is a hallmark of several types of malignancy[29], and hypomethylation within repetitive elements has been implicated in CRC initiation[30]. Pathway enrichment analysis of the DMR in promoters showed that these genes were enriched in the neuroactive ligand-receptor interaction pathway, which is consistent with previous results[11]. Our study suggests that the methylation of molecules involved in the gut-brain axis could play a crucial role in the initiation and progression of CRC, even in the early stages of ADE.

Seven meDEGs were identified as follows: *NECAB1*, *PCSK2*, *AGTR1*, *NLGN1*, *LRAT*, *RXRG*, and *TMEFF2*. Among these genes, the methylation of *PCSK2*[31], *AGTR1*[32], *LRAT*[33], *RXRG*[34], and *TMEFF2*[35] has been previously reported in CRC. *NECAB1* encodes a neuronal calcium-binding protein[36], and its methylation has been observed in acute myeloid leukemia[37]. *NLGN1* is involved in the regulation of glutamatergic transmission[38], and studies have shown that upregulated *NLGN1* expression predicts poor survival in CRC[39]. Moreover, Pergolizzi *et al*[40] found that *NLGN1* promotes CRC progression. In addition, *NLGN1* might act as a tumor suppressor gene during early CRC initiation but could promote CRC progression at later stages. Furthermore, we found that *AGTR1* and *NECAB1* methylation levels were associated with survival. Previous studies have shown that *AGTR1* expression serves as a prognostic biomarker in various cancers[41–43], whereas the prognostic value of *AGTR1* methylation has not been reported. There are still some limitations of our study: (1) The sample size of the present study was relatively limited hampering the statistical power of the study; and (2) Not all samples were subjected to both RNA-Seq and WGBS analysis due to the availability of RNA or DNA.

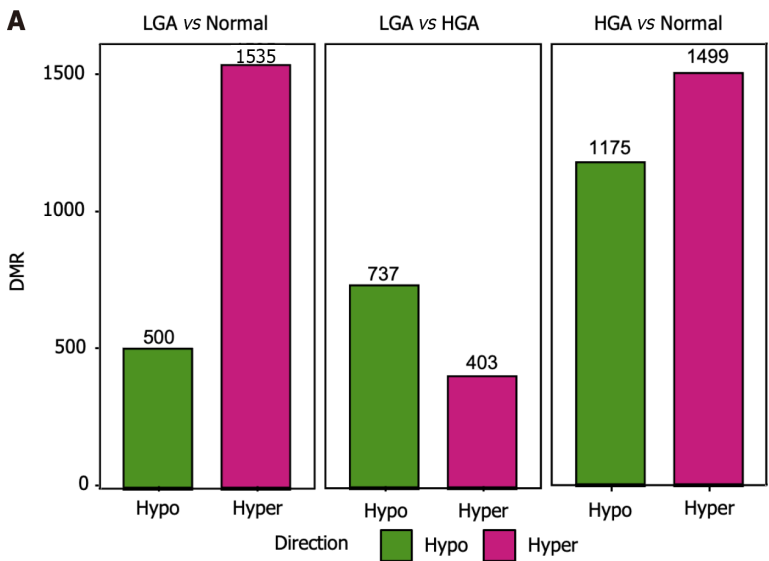
## CONCLUSION

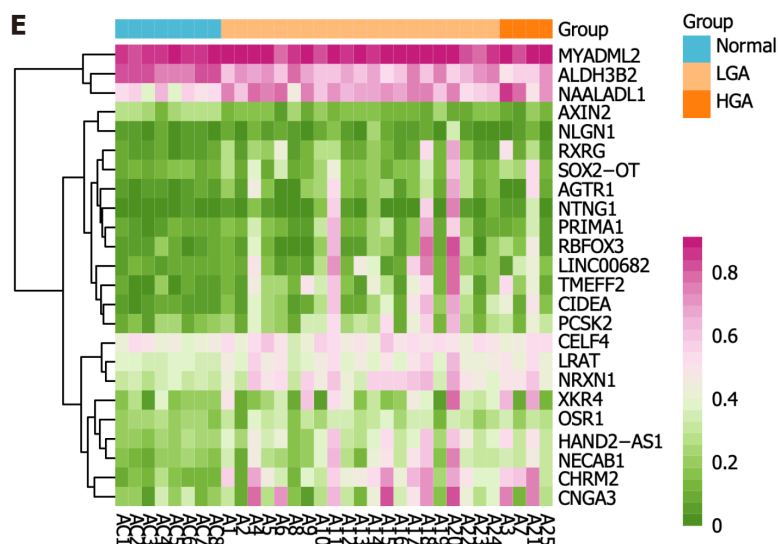
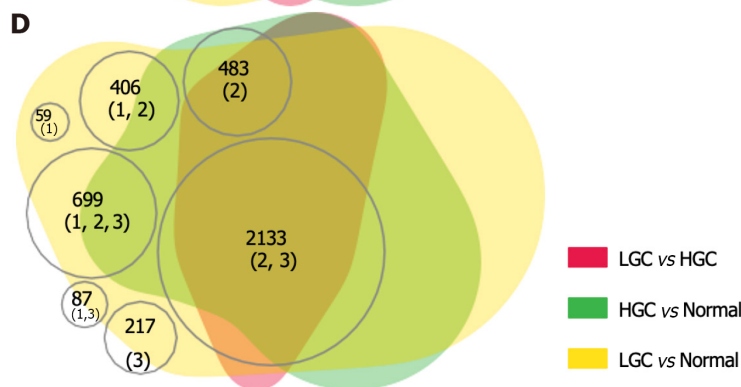
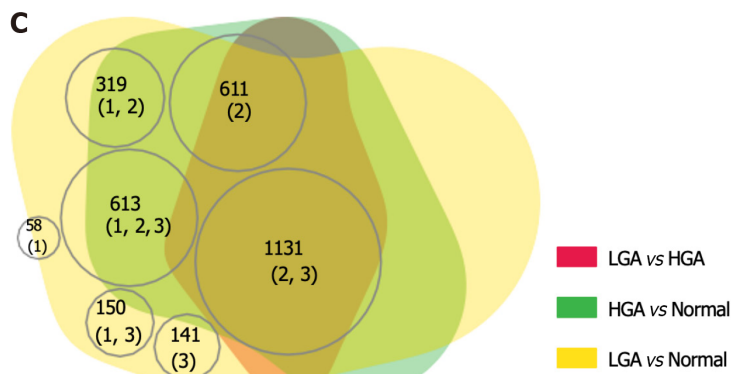
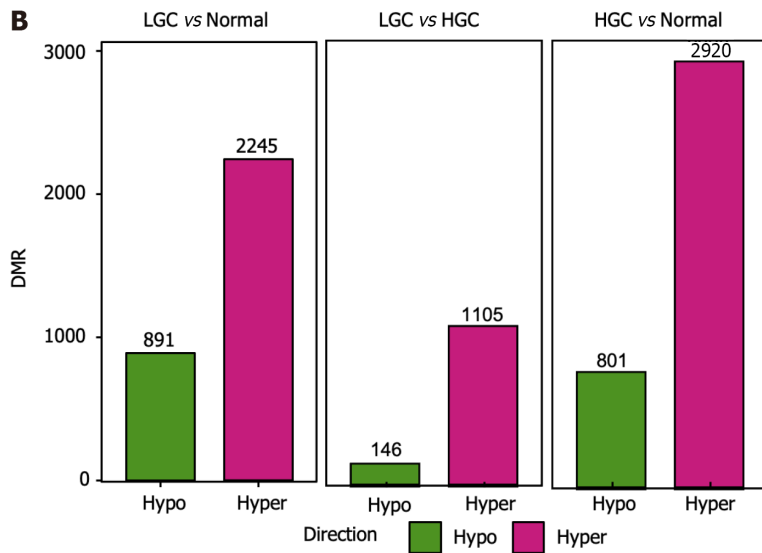
In summary, in this study, the global methylome patterns were characterized and genome-wide similarities in methylation patterns between ADE and CRC tissues were identified. Our results support the potential use of *AGTR1* and *NECAB1* methylation statuses as prognostic biomarkers for CRC.

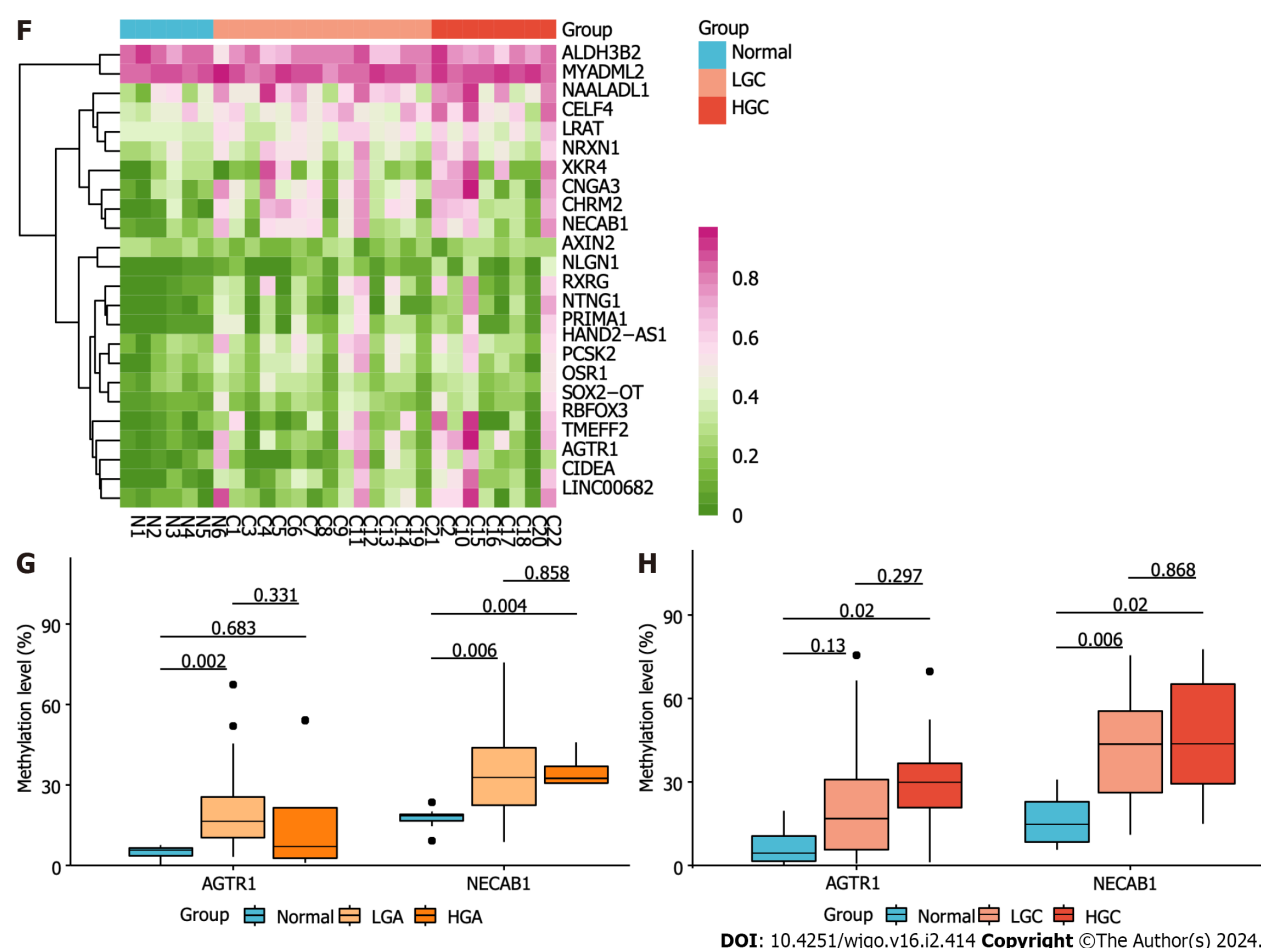




**Figure 7 Identification of methylation-silenced genes in the Colon Adenocarcinoma dataset.** A: Heatmap of expression level of methylation-regulated differentially expressed genes (meDEGs) in the Colon Adenocarcinoma (COAD) dataset; B: Heatmap of meDEG methylation in the COAD dataset; C: Barplot of ranked correlations between meDEG expression and methylation in the COAD dataset; D: Protein-protein interaction network of the meDEGs, constructed using GeneMANIA; E: Kaplan-Meier plots of overall survival according to *AGTR1* methylation; F: Kaplan-Meier plots of overall survival according to *NECAB1* methylation. CRC: Colorectal cancer.







**Figure 8 Genome-wide DNA methylation in colorectal cancer and adenoma of different grades.** A: Differentially methylated regions (DMRs) between low-grade adenoma (LGA) and normal tissues, high-grade adenoma (HGA) and normal tissue, and HGA and LGA; B: DMRs between low-grade cancer (LGC) and normal tissues, high-grade cancer (HGC) and normal tissue, and HGC and LGC; C: Venn plot highlighting the relationships among all DMRs in ADE of different grades; D: Venn plot highlighting the relationships among all DMRs in CRC of different grades; E: The methylation-regulated differentially expressed gene (meDEG) methylation pattern in ADE of different grades; F: The meDEG methylation pattern in CRC of different grades; G: Expression level differences in *AGTR1* and *NECAB1* between different grades of ADE; H: Expression level differences in *AGTR1* and *NECAB1* between different grades of CRC. DMRs: Differentially methylated regions; LGA: Low-grade adenoma; HGA: High-grade adenoma; LGC: Low-grade cancer; HGC: High-grade cancer.

## ARTICLE HIGHLIGHTS

### Research background

Aberrant methylation is a common occurrence in colorectal cancer (CRC) initiation and progression, with clinical implications for early detection during CRC formation.

### Research motivation

Addressing the critical need to identify specific DNA methylation markers for both adenoma (ADE) and CRC, the aim of this study was to unravel key molecular signatures associated with ADE and CRC.

### Research objectives

Utilizing SeqCap targeted bisulfite sequencing and RNA-seq analysis, the goal of this study was to comprehensively profile the epigenomic-transcriptomic landscapes of colorectal ADE and CRC samples.

### Research methods

The research involved a detailed examination, through SeqCap targeted bisulfite sequencing and RNA-seq analysis, shedding light on the distinctive epigenomic and transcriptomic characteristics of colorectal ADE and CRC. Public The Cancer Genome Atlas datasets were mined to explore the clinical implications of those methylation makers.

### Research results

The comparative analysis of 22 CRC and 25 ADE samples revealed higher global methylation in CRC, with both exhibiting similar methylation patterns in differentially methylated positions, gene locations, chromatin signatures, and repeated elements. Integration with RNA-seq data identified 14 methylation-regulated differentially expressed genes,

highlighting the prognostic significance of *AGTR1* and *NECAB1* methylation.

### Research conclusions

This study revealed genome-wide alterations in DNA methylation during early CRC stages. It further identified distinctive methylation signatures associated with colorectal ADEs and CRC. Notably, *AGTR1* and *NECAB1* methylation emerged as potential prognostic biomarkers for CRC.

### Research perspectives

The findings provide a foundation for future investigations into the clinical utility of identified methylation markers and the development of new targets for CRC treatment.

## FOOTNOTES

**Co-first authors:** You-Wang Lu and Zhao-Li Ding.

**Author contributions:** Liu J contributed to the conceptualization of this study; Ding ZL and Zhao GG involved in the investigation of this article; Lu YW and Mao R took part in the formal analysis of this manuscript; Lu YW and Liu J participated in the writing - original draft of this manuscript; He YQ and Li XL contributed to the writing - review & editing of this article.

**Supported by** the National Natural Science Foundation of China, No. 81960504; the “Xingdian Talents” Support Project of Yunnan Province, No. RLQB20200002; the Medical Discipline Reserve Talents of Yunnan Province, No. H-2018015; the Applied Basic Research Projects-Union Foundation of Kunming Medical University, No. 2017FE467(-132); and the Talent Introduction Project of Hubei Polytechnic University, No. 21xjz34R.

**Institutional review board statement:** This study was approved by the Ethics Committee of the First Affiliated Hospital of Kunming Medical University.

**Conflict-of-interest statement:** All the authors report no relevant conflicts of interest for this article.

**Data sharing statement:** All the raw data for WGBS and RNA-Seq have been deposited in the SRA database (BioProject Number: PRJNA996378). Technical appendix, and statistical code available from the corresponding author at [liujiang6787@163.com](mailto:liujiang6787@163.com).

**Open-Access:** This article is an open-access article that was selected by an in-house editor and fully peer-reviewed by external reviewers. It is distributed in accordance with the Creative Commons Attribution NonCommercial (CC BY-NC 4.0) license, which permits others to distribute, remix, adapt, build upon this work non-commercially, and license their derivative works on different terms, provided the original work is properly cited and the use is non-commercial. See: <https://creativecommons.org/licenses/by-nc/4.0/>

**Country/Territory of origin:** China

**ORCID number:** Jiang Liu [0000-0003-0744-0802](https://orcid.org/0000-0003-0744-0802).

**S-Editor:** Wang JJ

**L-Editor:** A

**P-Editor:** Zhang XD

## REFERENCES

- Sung H, Ferlay J, Siegel RL, Laversanne M, Soerjomataram I, Jemal A, Bray F. Global Cancer Statistics 2020: GLOBOCAN Estimates of Incidence and Mortality Worldwide for 36 Cancers in 185 Countries. *CA Cancer J Clin* 2021; **71**: 209-249 [PMID: [33538338](https://pubmed.ncbi.nlm.nih.gov/33538338/) DOI: [10.3322/caac.21660](https://doi.org/10.3322/caac.21660)]
- Chen W, Zheng R, Baade PD, Zhang S, Zeng H, Bray F, Jemal A, Yu XQ, He J. Cancer statistics in China, 2015. *CA Cancer J Clin* 2016; **66**: 115-132 [PMID: [26808342](https://pubmed.ncbi.nlm.nih.gov/26808342/) DOI: [10.3322/caac.21338](https://doi.org/10.3322/caac.21338)]
- Nguyen LH, Goel A, Chung DC. Pathways of Colorectal Carcinogenesis. *Gastroenterology* 2020; **158**: 291-302 [PMID: [31622622](https://pubmed.ncbi.nlm.nih.gov/31622622/) DOI: [10.1053/j.gastro.2019.08.059](https://doi.org/10.1053/j.gastro.2019.08.059)]
- Gu S, Lin S, Ye D, Qian S, Jiang D, Zhang X, Li Q, Yang J, Ying X, Li Z, Tang M, Wang J, Jin M, Chen K. Genome-wide methylation profiling identified novel differentially hypermethylated biomarker MPPED2 in colorectal cancer. *Clin Epigenetics* 2019; **11**: 41 [PMID: [30846004](https://pubmed.ncbi.nlm.nih.gov/30846004/) DOI: [10.1186/s13148-019-0628-y](https://doi.org/10.1186/s13148-019-0628-y)]
- Beggs AD, Jones A, El-Bahrawy M, Abulafi M, Hodgson SV, Tomlinson IP. Whole-genome methylation analysis of benign and malignant colorectal tumours. *J Pathol* 2013; **229**: 697-704 [PMID: [23096130](https://pubmed.ncbi.nlm.nih.gov/23096130/) DOI: [10.1002/path.4132](https://doi.org/10.1002/path.4132)]
- Hanley MP, Hahn MA, Li AX, Wu X, Lin J, Wang J, Choi AH, Ouyang Z, Fong Y, Pfeifer GP, Devers TJ, Rosenberg DW. Genome-wide DNA methylation profiling reveals cancer-associated changes within early colonic neoplasia. *Oncogene* 2017; **36**: 5035-5044 [PMID: [28459462](https://pubmed.ncbi.nlm.nih.gov/28459462/) DOI: [10.1038/onc.2017.130](https://doi.org/10.1038/onc.2017.130)]
- Naumov VA, Generozov EV, Zaharjevskaya NB, Matushkina DS, Larin AK, Chernyshov SV, Alekseev MV, Shelygin YA, Govorun VM. Genome-scale analysis of DNA methylation in colorectal cancer using Infinium HumanMethylation450 BeadChips. *Epigenetics* 2013; **8**: 921-

- 934 [PMID: [23867710](#) DOI: [10.4161/epi.25577](#)]
- 8 **Spisák S**, Kalmár A, Galamb O, Wichmann B, Sipos F, Péterfia B, Csabai I, Kovalszky I, Semsey S, Tulassay Z, Molnár B. Genome-wide screening of genes regulated by DNA methylation in colon cancer development. *PLoS One* 2012; **7**: e46215 [PMID: [23049694](#) DOI: [10.1371/journal.pone.0046215](#)]
- 9 **Wang X**, Wang D, Zhang H, Feng M, Wu X. Genome-wide analysis of DNA methylation identifies two CpG sites for the early screening of colorectal cancer. *Epigenomics* 2020; **12**: 37-52 [PMID: [31762318](#) DOI: [10.2217/epi-2019-0299](#)]
- 10 **Luo Y**, Wong CJ, Kaz AM, Dzieciatkowski S, Carter KT, Morris SM, Wang J, Willis JE, Makar KW, Ulrich CM, Lutterbaugh JD, Shrubsole MJ, Zheng W, Markowitz SD, Grady WM. Differences in DNA methylation signatures reveal multiple pathways of progression from adenoma to colorectal cancer. *Gastroenterology* 2014; **147**: 418-29.e8 [PMID: [24793120](#) DOI: [10.1053/j.gastro.2014.04.039](#)]
- 11 **Fan J**, Li J, Guo S, Tao C, Zhang H, Wang W, Zhang Y, Zhang D, Ding S, Zeng C. Genome-wide DNA methylation profiles of low- and high-grade adenoma reveals potential biomarkers for early detection of colorectal carcinoma. *Clin Epigenetics* 2020; **12**: 56 [PMID: [32317010](#) DOI: [10.1186/s13148-020-00851-3](#)]
- 12 **Khodasevich D**, Smith AR, Huen K, Eskenazi B, Cardenas A, Holland N. Comparison of DNA methylation measurements from EPIC BeadChip and SeqCap targeted bisulphite sequencing in PON1 and nine additional candidate genes. *Epigenetics* 2022; **17**: 1944-1955 [PMID: [35786310](#) DOI: [10.1080/15592294.2022.2091818](#)]
- 13 **Krueger F**, Andrews SR. Bismark: a flexible aligner and methylation caller for Bisulfite-Seq applications. *Bioinformatics* 2011; **27**: 1571-1572 [PMID: [21493656](#) DOI: [10.1093/bioinformatics/btr167](#)]
- 14 **Akalin A**, Kormaksson M, Li S, Garrett-Bakelman FE, Figueroa ME, Melnick A, Mason CE. methylKit: a comprehensive R package for the analysis of genome-wide DNA methylation profiles. *Genome Biol* 2012; **13**: R87 [PMID: [23034086](#) DOI: [10.1186/gb-2012-13-10-r87](#)]
- 15 **Ernst J**, Kellis M. ChromHMM: automating chromatin-state discovery and characterization. *Nat Methods* 2012; **9**: 215-216 [PMID: [22373907](#) DOI: [10.1038/nmeth.1906](#)]
- 16 **Sheffield NC**, Bock C. LOLA: enrichment analysis for genomic region sets and regulatory elements in R and Bioconductor. *Bioinformatics* 2016; **32**: 587-589 [PMID: [26508757](#) DOI: [10.1093/bioinformatics/btv612](#)]
- 17 **Pérez RF**, Tejedor JR, Santamarina-Ojeda P, Martínez VL, Urdinguio RG, Villamañán L, Candiota AP, Sarró NMV, Barradas M, Fernandez-Marcos PJ, Serrano M, Fernández AF, Fraga MF. Conservation of Aging and Cancer Epigenetic Signatures across Human and Mouse. *Mol Biol Evol* 2021; **38**: 3415-3435 [PMID: [33871658](#) DOI: [10.1093/molbev/msab112](#)]
- 18 **Roadmap Epigenomics Consortium**, Kundaje A, Meuleman W, Ernst J, Bilenky M, Yen A, Heravi-Moussavi A, Kheradpour P, Zhang Z, Wang J, Ziller MJ, Amin V, Whitaker JW, Schultz MD, Ward LD, Sarkar A, Quon G, Sandstrom RS, Eaton ML, Wu YC, Pfenning AR, Wang X, Claussnitzer M, Liu Y, Coarfa C, Harris RA, Shores N, Epstein CB, Gjoneska E, Leung D, Xie W, Hawkins RD, Lister R, Hong C, Gascard P, Mungall AJ, Moore R, Chuah E, Tam A, Canfield TK, Hansen RS, Kaul R, Sabo PJ, Bansal MS, Carles A, Dixon JR, Farh KH, Feizi S, Karlic R, Kim AR, Kulkarni A, Li D, Lowdon R, Elliott G, Mercer TR, Neph SJ, Onuchic V, Polak P, Rajagopal N, Ray P, Sallari RC, Siebenthall KT, Sinnott-Armstrong NA, Stevens M, Thurman RE, Wu J, Zhang B, Zhou X, Beaudet AE, Boyer LA, De Jager PL, Farnham PJ, Fisher SJ, Haussler D, Jones SJ, Li W, Marra MA, McManus MT, Sunyaev S, Thomson JA, Tlsty TD, Tsai LH, Wang W, Waterland RA, Zhang MQ, Chadwick LH, Bernstein BE, Costello JF, Ecker JR, Hirst M, Meissner A, Milosavljevic A, Ren B, Stamatoyannopoulos JA, Wang T, Kellis M. Integrative analysis of 111 reference human epigenomes. *Nature* 2015; **518**: 317-330 [PMID: [25693563](#) DOI: [10.1038/nature14248](#)]
- 19 **Morris TJ**, Butcher LM, Feber A, Teschendorff AE, Chakravarthy AR, Wojdacz TK, Beck S. ChAMP: 450k Chip Analysis Methylation Pipeline. *Bioinformatics* 2014; **30**: 428-430 [PMID: [24336642](#) DOI: [10.1093/bioinformatics/btt684](#)]
- 20 **Wang M**, Zhao Y, Zhang B. Efficient Test and Visualization of Multi-Set Intersections. *Sci Rep* 2015; **5**: 16923 [PMID: [26603754](#) DOI: [10.1038/srep16923](#)]
- 21 **Lieberman DA**, Prindiville S, Weiss DG, Willett W; VA Cooperative Study Group 380. Risk factors for advanced colonic neoplasia and hyperplastic polyps in asymptomatic individuals. *JAMA* 2003; **290**: 2959-2967 [PMID: [14665657](#) DOI: [10.1001/jama.290.22.2959](#)]
- 22 **Patai ÁV**, Valcz G, Hollósi P, Kalmár A, Péterfia B, Patai Á, Wichmann B, Spisák S, Barták BK, Leiszter K, Tóth K, Sipos F, Kovalszky I, Péter Z, Miheller P, Tulassay Z, Molnár B. Comprehensive DNA Methylation Analysis Reveals a Common Ten-Gene Methylation Signature in Colorectal Adenomas and Carcinomas. *PLoS One* 2015; **10**: e0133836 [PMID: [26291085](#) DOI: [10.1371/journal.pone.0133836](#)]
- 23 **McInnes T**, Zou D, Rao DS, Munro FM, Phillips VL, McCall JL, Black MA, Reeve AE, Guilford PJ. Genome-wide methylation analysis identifies a core set of hypermethylated genes in CIMP-H colorectal cancer. *BMC Cancer* 2017; **17**: 228 [PMID: [28351398](#) DOI: [10.1186/s12885-017-3226-4](#)]
- 24 **Kibriya MG**, Raza M, Jasmine F, Roy S, Paul-Brutus R, Rahaman R, Dodsworth C, Rakibuz-Zaman M, Kamal M, Ahsan H. A genome-wide DNA methylation study in colorectal carcinoma. *BMC Med Genomics* 2011; **4**: 50 [PMID: [21699707](#) DOI: [10.1186/1755-8794-4-50](#)]
- 25 **Sakai E**, Nakajima A, Kaneda A. Accumulation of aberrant DNA methylation during colorectal cancer development. *World J Gastroenterol* 2014; **20**: 978-987 [PMID: [24574770](#) DOI: [10.3748/wjg.v20.i4.978](#)]
- 26 **Chen Y**, Ren B, Yang J, Wang H, Yang G, Xu R, You L, Zhao Y. The role of histone methylation in the development of digestive cancers: a potential direction for cancer management. *Signal Transduct Target Ther* 2020; **5**: 143 [PMID: [32747629](#) DOI: [10.1038/s41392-020-00252-1](#)]
- 27 **Piunti A**, Shilatifard A. The roles of Polycomb repressive complexes in mammalian development and cancer. *Nat Rev Mol Cell Biol* 2021; **22**: 326-345 [PMID: [33723438](#) DOI: [10.1038/s41580-021-00341-1](#)]
- 28 **Bormann F**, Rodríguez-Paredes M, Lasitschka F, Edelmann D, Musch T, Benner A, Bergman Y, Dieter SM, Ball CR, Glimm H, Linhart HG, Lyko F. Cell-of-Origin DNA Methylation Signatures Are Maintained during Colorectal Carcinogenesis. *Cell Rep* 2018; **23**: 3407-3418 [PMID: [29898408](#) DOI: [10.1016/j.celrep.2018.05.045](#)]
- 29 **Ardeljan D**, Taylor MS, Ting DT, Burns KH. The Human Long Interspersed Element-1 Retrotransposon: An Emerging Biomarker of Neoplasia. *Clin Chem* 2017; **63**: 816-822 [PMID: [28188229](#) DOI: [10.1373/clinchem.2016.257444](#)]
- 30 **Tse JWT**, Jenkins LJ, Chionh F, Mariadason JM. Aberrant DNA Methylation in Colorectal Cancer: What Should We Target? *Trends Cancer* 2017; **3**: 698-712 [PMID: [28958388](#) DOI: [10.1016/j.trecan.2017.08.003](#)]
- 31 **Wu J**, Zhang L, Kuchi A, Ohtoinoyi D, Hicks C. CpG Site-Based Signature Predicts Survival of Colorectal Cancer. *Biomedicines* 2022; **10** [PMID: [36551919](#) DOI: [10.3390/biomedicines10123163](#)]
- 32 **Carmona FJ**, Azuara D, Berenguer-Llargo A, Fernández AF, Biondo S, de Oca J, Rodríguez-Moranta F, Salazar R, Villanueva A, Fraga MF, Guardiola J, Capellá G, Esteller M, Moreno V. DNA methylation biomarkers for noninvasive diagnosis of colorectal cancer. *Cancer Prev Res (Phila)* 2013; **6**: 656-665 [PMID: [23694962](#) DOI: [10.1158/1940-6207.CAPR-12-0501](#)]
- 33 **Cheng YW**, Pincas H, Huang J, Zachariah E, Zeng Z, Notterman DA, Paty P, Barany F. High incidence of LRAT promoter hypermethylation

- in colorectal cancer correlates with tumor stage. *Med Oncol* 2014; **31**: 254 [PMID: 25260806 DOI: 10.1007/s12032-014-0254-7]
- 34 **Evdokimov AA**, Netesova NA, Smetannikova NA, Abdurashitov MA, Akishev AG, Malyshev BS, Davidovich ES, Fedotov VV, Kuznetsov VV, Ermolaev YD, Karpov AB, Sazonov AE, Tahauov RM, Degtyarev SK. GLAD-PCR assay of DNA methylation markers associated with colorectal cancer. *Biol Med* 2016; **8** [DOI: 10.4172/0974-8369.1000342]
- 35 **He Q**, Chen HY, Bai EQ, Luo YX, Fu RJ, He YS, Jiang J, Wang HQ. Development of a multiplex MethyLight assay for the detection of multigene methylation in human colorectal cancer. *Cancer Genet Cytogenet* 2010; **202**: 1-10 [PMID: 20804913 DOI: 10.1016/j.cancergencyto.2010.05.018]
- 36 **Zhang MD**, Tortoriello G, Hsueh B, Tomer R, Ye L, Mitsios N, Borgius L, Grant G, Kiehn O, Watanabe M, Uhlén M, Mulder J, Deisseroth K, Harkany T, Hökfelt TG. Neuronal calcium-binding proteins 1/2 localize to dorsal root ganglia and excitatory spinal neurons and are regulated by nerve injury. *Proc Natl Acad Sci U S A* 2014; **111**: E1149-E1158 [PMID: 24616509 DOI: 10.1073/pnas.1402318111]
- 37 **Spencer DH**, Russler-Germain DA, Ketkar S, Helton NM, Lamprecht TL, Fulton RS, Fronick CC, O'Laughlin M, Heath SE, Shinawi M, Westervelt P, Payton JE, Wartman LD, Welch JS, Wilson RK, Walter MJ, Link DC, DiPersio JF, Ley TJ. CpG Island Hypermethylation Mediated by DNMT3A Is a Consequence of AML Progression. *Cell* 2017; **168**: 801-816.e13 [PMID: 28215704 DOI: 10.1016/j.cell.2017.01.021]
- 38 **Hannou L**, Bélanger-Nelson E, O'Callaghan EK, Dufort-Gervais J, Ballester Roig MN, Roy PG, Beaulieu JM, Cermakian N, Mongrain V. Regulation of the Neuroligin-1 Gene by Clock Transcription Factors. *J Biol Rhythms* 2018; **33**: 166-178 [PMID: 29671709 DOI: 10.1177/0748730418761236]
- 39 **Yu Q**, Wang X, Yang Y, Chi P, Huang J, Qiu S, Zheng X, Chen X. Upregulated NLGN1 predicts poor survival in colorectal cancer. *BMC Cancer* 2021; **21**: 884 [PMID: 34340665 DOI: 10.1186/s12885-021-08621-x]
- 40 **Pergolizzi M**, Bizzozero L, Maione F, Maldi E, Isella C, Macagno M, Mariella E, Bardelli A, Medico E, Marchiò C, Serini G, Di Nicolantonio F, Bussolino F, Arese M. The neuronal protein Neuroligin 1 promotes colorectal cancer progression by modulating the APC/β-catenin pathway. *J Exp Clin Cancer Res* 2022; **41**: 266 [PMID: 36056393 DOI: 10.1186/s13046-022-02465-4]
- 41 **Cui Y**, Chen F, Gao J, Lei M, Wang D, Jin X, Guo Y, Shan L, Chen X. Comprehensive landscape of the renin-angiotensin system in Pan-cancer: a potential downstream mediated mechanism of SARS-CoV-2. *Int J Biol Sci* 2021; **17**: 3795-3817 [PMID: 34671200 DOI: 10.7150/ijbs.53312]
- 42 **Cheng H**, Wang Y, Liu C, Wu T, Chen S, Chen M. Development and Verification of a Prostate Cancer Prognostic Signature Based on an Immunogenomic Landscape Analysis. *Front Oncol* 2021; **11**: 711258 [PMID: 34568039 DOI: 10.3389/fonc.2021.711258]
- 43 **Lin P**, Guo YN, Shi L, Li XJ, Yang H, He Y, Li Q, Dang YW, Wei KL, Chen G. Development of a prognostic index based on an immunogenomic landscape analysis of papillary thyroid cancer. *Aging (Albany NY)* 2019; **11**: 480-500 [PMID: 30661062 DOI: 10.18632/aging.101754]



Published by **Baishideng Publishing Group Inc**  
7041 Koll Center Parkway, Suite 160, Pleasanton, CA 94566, USA

**Telephone:** +1-925-3991568

**E-mail:** [office@baishideng.com](mailto:office@baishideng.com)

**Help Desk:** <https://www.f6publishing.com/helpdesk>

<https://www.wjgnet.com>

