

# World Journal of *Gastrointestinal Oncology*

*World J Gastrointest Oncol* 2024 March 15; 16(3): 571-1090



## EDITORIAL

- 571 Synchronous gastric and colon cancers: Important to consider hereditary syndromes and chronic inflammatory disease associations  
*Shenoy S*
- 577 Neutrophil-to-lymphocyte ratio and platelet-to-lymphocyte ratio: Markers predicting immune-checkpoint inhibitor efficacy and immune-related adverse events  
*Jiang QY, Xue RY*
- 583 Early-onset gastrointestinal cancer: An epidemiological reality with great significance and implications  
*Triantafyllidis JK, Georgiou K, Konstadoulakis MM, Papalois AE*

## REVIEW

- 598 Management of obstructed colorectal carcinoma in an emergency setting: An update  
*Pavlidis ET, Galanis IN, Pavlidis TE*
- 614 Unraveling the enigma: A comprehensive review of solid pseudopapillary tumor of the pancreas  
*Xu YC, Fu DL, Yang F*

## MINIREVIEWS

- 630 Roles and application of exosomes in the development, diagnosis and treatment of gastric cancer  
*Guan XL, Guan XY, Zhang ZY*
- 643 Prognostic and predictive role of immune microenvironment in colorectal cancer  
*Kuznetsova O, Fedyanin M, Zavalishina L, Moskvina L, Kuznetsova O, Lebedeva A, Tryakin A, Kireeva G, Borshchev G, Tjulandin S, Ignatova E*
- 653 Pylorus-preserving gastrectomy for early gastric cancer  
*Sun KK, Wu YY*

## ORIGINAL ARTICLE

## Case Control Study

- 659 N-glycan biosignatures as a potential diagnostic biomarker for early-stage pancreatic cancer  
*Wen YR, Lin XW, Zhou YW, Xu L, Zhang JL, Chen CY, He J*
- 670 Expression and significance of pigment epithelium-derived factor and vascular endothelial growth factor in colorectal adenoma and cancer  
*Yang Y, Wen W, Chen FL, Zhang YJ, Liu XC, Yang XY, Hu SS, Jiang Y, Yuan J*

- 687 Impact of Alcian blue and periodic acid Schiff expression on the prognosis of gastric signet ring cell carcinoma

*Lin J, Chen ZF, Guo GD, Chen X*

#### Retrospective Cohort Study

- 699 Clinical profile and outcomes of hepatocellular carcinoma in primary Budd-Chiari syndrome

*Agarwal A, Biswas S, Swaroop S, Aggarwal A, Agarwal A, Jain G, Elhence A, Vaidya A, Gupte A, Mohanka R, Kumar R, Mishra AK, Gamanagatti S, Paul SB, Acharya SK, Shukla A, Shalimar*

- 716 Chinese herbal medicine decreases incidence of hepatocellular carcinoma in diabetes mellitus patients with regular insulin management

*Lai HC, Cheng JC, Yip HT, Jeng LB, Huang ST*

- 732 Combining systemic inflammatory response index and albumin fibrinogen ratio to predict early serious complications and prognosis after resectable gastric cancer

*Ren JY, Wang D, Zhu LH, Liu S, Yu M, Cai H*

- 750 Mucosa color and size may indicate malignant transformation of chicken skin mucosa-positive colorectal neoplastic polyps

*Zhang YJ, Yuan MX, Wen W, Li F, Jian Y, Zhang CM, Yang Y, Chen FL*

- 761 Epidemiology, therapy and outcome of hepatocellular carcinoma between 2010 and 2019 in Piedmont, Italy

*Bracco C, Gallarate M, Badinella Martini M, Magnino C, D'Agnano S, Canta R, Racca G, Melchio R, Serraino C, Polla Mattiot V, Gollè G, Fenoglio L*

- 773 Study on sex differences and potential clinical value of three-dimensional computerized tomography pelvimetry in rectal cancer patients

*Zhou XC, Ke FY, Dhamija G, Chen H, Wang Q*

#### Retrospective Study

- 787 High patatin like phospholipase domain containing 8 expression as a biomarker for poor prognosis of colorectal cancer

*Zhou PY, Zhu DX, Chen YJ, Feng QY, Mao YH, Zhuang AB, Xu JM*

- 798 Combining prognostic value of serum carbohydrate antigen 19-9 and tumor size reduction ratio in pancreatic ductal adenocarcinoma

*Xia DQ, Zhou Y, Yang S, Li FF, Tian LY, Li YH, Xu HY, Xiao CZ, Wang W*

- 810 Influence of transcatheter arterial embolization on symptom distress and fatigue in liver cancer patients

*Yang XM, Yang XY, Wang XY, Gu YX*

- 819 T2-weighted imaging-based radiomic-clinical machine learning model for predicting the differentiation of colorectal adenocarcinoma

*Zheng HD, Huang QY, Huang QM, Ke XT, Ye K, Lin S, Xu JH*

- 833 Predictive value of positive lymph node ratio in patients with locally advanced gastric remnant cancer

*Zhuo M, Tian L, Han T, Liu TF, Lin XL, Xiao XY*

- 844 Risk of cardiovascular death in patients with hepatocellular carcinoma based on the Fine-Gray model  
*Zhang YL, Liu ZR, Liu Z, Bai Y, Chi H, Chen DP, Zhang YM, Cui ZL*
- 857 Preoperatively predicting vessels encapsulating tumor clusters in hepatocellular carcinoma: Machine learning model based on contrast-enhanced computed tomography  
*Zhang C, Zhong H, Zhao F, Ma ZY, Dai ZJ, Pang GD*
- 875 Comparison of mismatch repair and immune checkpoint protein profile with histopathological parameters in pancreatic, peripapillary/ampullary, and choledochal adenocarcinomas  
*Aydin AH, Turhan N*
- 883 Assessment of programmed death-ligand 1 expression in primary tumors and paired lymph node metastases of gastric adenocarcinoma  
*Coimbra BC, Pereira MA, Cardili L, Alves VAF, de Mello ES, Ribeiro U Jr, Ramos MFKP*

### Observational Study

- 894 Identification of breath volatile organic compounds to distinguish pancreatic adenocarcinoma, pancreatic cystic neoplasm, and patients without pancreatic lesions  
*Tiankanon K, Pungpipattrakul N, Sukaram T, Chaiteerakij R, Rerknimitr R*
- 907 Clinical features and prognostic factors of duodenal neuroendocrine tumours: A comparative study of ampullary and nonampullary regions  
*Fang S, Shi YP, Wang L, Han S, Shi YQ*

### Clinical and Translational Research

- 919 Construction of an immune-related gene signature for overall survival prediction and immune infiltration in gastric cancer  
*Ma XT, Liu X, Ou K, Yang L*
- 933 Clinical efficacy and pathological outcomes of transanal endoscopic intersphincteric resection for low rectal cancer  
*Xu ZW, Zhu JT, Bai HY, Yu XJ, Hong QQ, You J*
- 945 Identification of a novel inflammatory-related gene signature to evaluate the prognosis of gastric cancer patients  
*Hu JL, Huang MJ, Halina H, Qiao K, Wang ZY, Lu JJ, Yin CL, Gao F*

### Basic Study

- 968 Verteporfin fluorescence in antineoplastic-treated pancreatic cancer cells found concentrated in mitochondria  
*Zhang YQ, Liu QH, Liu L, Guo PY, Wang RZ, Ba ZC*
- 979 Effects of *Helicobacter pylori* and Moluodan on the Wnt/ $\beta$ -catenin signaling pathway in mice with precancerous gastric cancer lesions  
*Wang YM, Luo ZW, Shu YL, Zhou X, Wang LQ, Liang CH, Wu CQ, Li CP*



- 991** Mitochondrial carrier homolog 2 increases malignant phenotype of human gastric epithelial cells and promotes proliferation, invasion, and migration of gastric cancer cells  
*Zhang JW, Huang LY, Li YN, Tian Y, Yu J, Wang XF*
- 1006** Ubiquitin-specific protease 21 promotes tumorigenicity and stemness of colorectal cancer by deubiquitinating and stabilizing ZEB1  
*Lin JJ, Lu YC*
- 1019** Long non-coding RNA GATA6-AS1 is mediated by N6-methyladenosine methylation and inhibits the proliferation and metastasis of gastric cancer  
*Shen JJ, Li MC, Tian SQ, Chen WM*
- 1029** CALD1 facilitates epithelial-mesenchymal transition progression in gastric cancer cells by modulating the PI3K-Akt pathway  
*Ma WQ, Miao MC, Ding PA, Tan BB, Liu WB, Guo S, Er LM, Zhang ZD, Zhao Q*

### **META-ANALYSIS**

- 1046** Efficacy and safety of perioperative therapy for locally resectable gastric cancer: A network meta-analysis of randomized clinical trials  
*Kuang ZY, Sun QH, Cao LC, Ma XY, Wang JX, Liu KX, Li J*

### **SCIENTOMETRICS**

- 1059** Insights into the history and tendency of glycosylation and digestive system tumor: A bibliometric-based visual analysis  
*Jiang J, Luo Z, Zhang RC, Wang YL, Zhang J, Duan MY, Qiu ZJ, Huang C*

### **CASE REPORT**

- 1076** Managing end-stage carcinoid heart disease: A case report and literature review  
*Bulj N, Tomasic V, Cigrovski Berkovic M*
- 1084** Hemorrhagic cystitis in gastric cancer after nanoparticle albumin-bound paclitaxel: A case report  
*Zhang XJ, Lou J*

**ABOUT COVER**

Peer Review of *World Journal of Gastrointestinal Oncology*, Noha Elkady, MD, Assistant Professor, Department of Pathology, Faculty of Medicine Menoufia University, Shibin Elkom 32511, Egypt. drnohaelkady@gmail.com

**AIMS AND SCOPE**

The primary aim of *World Journal of Gastrointestinal Oncology* (WJGO, *World J Gastrointest Oncol*) is to provide scholars and readers from various fields of gastrointestinal oncology with a platform to publish high-quality basic and clinical research articles and communicate their research findings online.

WJGO mainly publishes articles reporting research results and findings obtained in the field of gastrointestinal oncology and covering a wide range of topics including liver cell adenoma, gastric neoplasms, appendiceal neoplasms, biliary tract neoplasms, hepatocellular carcinoma, pancreatic carcinoma, cecal neoplasms, colonic neoplasms, colorectal neoplasms, duodenal neoplasms, esophageal neoplasms, gallbladder neoplasms, *etc.*

**INDEXING/ABSTRACTING**

The WJGO is now abstracted and indexed in PubMed, PubMed Central, Science Citation Index Expanded (SCIE, also known as SciSearch®), Journal Citation Reports/Science Edition, Scopus, Reference Citation Analysis, China Science and Technology Journal Database, and Superstar Journals Database. The 2023 edition of Journal Citation Reports® cites the 2022 impact factor (IF) for WJGO as 3.0; IF without journal self cites: 2.9; 5-year IF: 3.0; Journal Citation Indicator: 0.49; Ranking: 157 among 241 journals in oncology; Quartile category: Q3; Ranking: 58 among 93 journals in gastroenterology and hepatology; and Quartile category: Q3. The WJGO's CiteScore for 2022 is 4.1 and Scopus CiteScore rank 2022: Gastroenterology is 71/149; Oncology is 197/366.

**RESPONSIBLE EDITORS FOR THIS ISSUE**

Production Editor: Xiang-Di Zhang; Production Department Director: Xiang Li; Editorial Office Director: Jia-Ru Fan.

**NAME OF JOURNAL**

*World Journal of Gastrointestinal Oncology*

**ISSN**

ISSN 1948-5204 (online)

**LAUNCH DATE**

February 15, 2009

**FREQUENCY**

Monthly

**EDITORS-IN-CHIEF**

Monjur Ahmed, Florin Burada

**EDITORIAL BOARD MEMBERS**

<https://www.wjgnet.com/1948-5204/editorialboard.htm>

**PUBLICATION DATE**

March 15, 2024

**COPYRIGHT**

© 2024 Baishideng Publishing Group Inc

**INSTRUCTIONS TO AUTHORS**

<https://www.wjgnet.com/bpg/gerinfo/204>

**GUIDELINES FOR ETHICS DOCUMENTS**

<https://www.wjgnet.com/bpg/GerInfo/287>

**GUIDELINES FOR NON-NATIVE SPEAKERS OF ENGLISH**

<https://www.wjgnet.com/bpg/gerinfo/240>

**PUBLICATION ETHICS**

<https://www.wjgnet.com/bpg/GerInfo/288>

**PUBLICATION MISCONDUCT**

<https://www.wjgnet.com/bpg/gerinfo/208>

**ARTICLE PROCESSING CHARGE**

<https://www.wjgnet.com/bpg/gerinfo/242>

**STEPS FOR SUBMITTING MANUSCRIPTS**

<https://www.wjgnet.com/bpg/GerInfo/239>

**ONLINE SUBMISSION**

<https://www.f6publishing.com>



Basic Study

# Ubiquitin-specific protease 21 promotes tumorigenicity and stemness of colorectal cancer by deubiquitinating and stabilizing ZEB1

Jun-Jun Lin, Ye-Cai Lu

**Specialty type:** Gastroenterology and hepatology

**Provenance and peer review:** Unsolicited article; Externally peer reviewed.

**Peer-review model:** Single blind

**Peer-review report's scientific quality classification**

Grade A (Excellent): 0  
Grade B (Very good): B, B  
Grade C (Good): 0  
Grade D (Fair): 0  
Grade E (Poor): 0

**P-Reviewer:** Sahin TT, Turkey; Sato H, Japan

**Received:** October 26, 2023

**Peer-review started:** October 26, 2023

**First decision:** December 31, 2023

**Revised:** January 4, 2024

**Accepted:** January 31, 2024

**Article in press:** January 31, 2024

**Published online:** March 15, 2024



**Jun-Jun Lin, Ye-Cai Lu**, Department of Gastrointestinal Surgery, Chaohu Hospital of Anhui Medical University, Chaohu 238000, Anhui Province, China

**Corresponding author:** Ye-Cai Lu, MD, Professor, Department of Gastrointestinal Surgery, Chaohu Hospital of Anhui Medical University, No. 64 Chaohu North Road, Chaohu 238000, Anhui Province, China. [13965691202@163.com](mailto:13965691202@163.com)

## Abstract

### BACKGROUND

Colorectal cancer (CRC) is one very usual tumor together with higher death rate. Ubiquitin-specific protease 21 (USP21) has been confirmed to take part into the regulation of CRC progression through serving as a facilitator. Interestingly, the promotive function of USP21 has also discovered in the progression of CRC. ZEB1 has illustrated to be modulated by USP7, USP22 and USP51 in cancers. However, the regulatory functions of USP21 on ZEB1 in CRC progression need more investigations.

### AIM

To investigate the relationship between USP21 and ZEB1 in CRC progression.

### METHODS

The mRNA and protein expressions were assessed through RT-qPCR, western blot and IHC assay. The interaction between USP21 and ZEB1 was evaluated through Co-IP and GST pull down assays. The cell proliferation was detected through colony formation assay. The cell migration and invasion abilities were determined through Transwell assay. The stemness was tested through sphere formation assay. The tumor growth was evaluated through *in vivo* mice assay.

### RESULTS

In this work, USP21 and ZEB1 exhibited higher expression in CRC, and resulted into poor prognosis. Moreover, the interaction between USP21 and ZEB1 was further investigated. It was demonstrated that USP21 contributed to the stability of ZEB1 through modulating ubiquitination level. In addition, USP21 strengthened cell proliferation, migration and stemness through regulating ZEB1. At last, through *in vivo* assays, it was illustrated that USP21/ZEB1 axis aggravated tumor growth.

## CONCLUSION

For the first time, these above findings manifested that USP21 promoted tumorigenicity and stemness of CRC by deubiquitinating and stabilizing ZEB1. This discovery suggested that USP21/ZEB1 axis may provide novel sights for the treatment of CRC.

**Key Words:** Ubiquitin-specific protease 21; ZEB1; Stemness; Colorectal cancer

©The Author(s) 2024. Published by Baishideng Publishing Group Inc. All rights reserved.

**Core Tip:** Ubiquitin-specific protease 21 (USP21) and ZEB1 had been discovered to exhibit higher expressions in colorectal cancer (CRC) tissues and cells, and result into poor prognosis. USP21 contributed to the stability of ZEB1 through modulating ubiquitination level. Our findings proved that USP21 promoted tumorigenicity and stemness of CRC by deubiquitinating and stabilizing ZEB1. Moreover, it was uncovered that USP21/ZEB1 axis aggravated tumor growth *in vivo*.

**Citation:** Lin JJ, Lu YC. Ubiquitin-specific protease 21 promotes tumorigenicity and stemness of colorectal cancer by deubiquitinating and stabilizing ZEB1. *World J Gastrointest Oncol* 2024; 16(3): 1006-1018

**URL:** <https://www.wjgnet.com/1948-5204/full/v16/i3/1006.htm>

**DOI:** <https://dx.doi.org/10.4251/wjgo.v16.i3.1006>

## INTRODUCTION

Colorectal cancer (CRC) is a kind of prevalent reason for causing cancer-related mortality globally[1]. Some great improvements in CRC treatment (such as radiotherapy, immunotherapy and chemotherapy) have done, but high rate of tumor recurrence and metastasis of postoperative CRC patients still result into poor outcome[2]. Hence, it is urgently needed to look for the effective bio-targets and associated molecular pathways in improving CRC.

Ubiquitination is a sort of pivotal signal transduction mechanism, which modulates immune response and numerous biological processes[3]. It can be regulated by ubiquitinases and de-ubiquitinases to form a kind of pivotal post-translational modification, and this is a reversible process[4]. Ubiquitination affects the stability and activity of protein, and takes part into homeostatic cellular functions[5]. Many ubiquitin-specific proteases have been clarified to join into the progression of CRC. For example, Ubiquitin-specific protease (USP) 38 affects HDAC3 in CRC to modulate the stemness and chemoresistance[6]. Moreover, USP5 stabilizes Tu translation elongation factor to affect tumor growth in CRC[7]. USP22 reduces the mTOR activity to retard the progression of CRC[8]. Besides, USP25 aggravates tumorigenesis in CRC [9].

Ubiquitin-specific protease 21 (USP21) is one de-ubiquitinase that participates into the malignant progression of diversified cancers. For instance, USP21 deubiquitinase strengthens macropinocytosis in pancreatic cancer to trigger oncogenic KRAS bypass[10]. Furthermore, USP21 modulates the STAT3/FOXO1 pathway to accelerate cell proliferation and glycolysis in esophageal cancer[11]. Additionally, USP21 contributes to cell proliferation and migration in cholangiocarcinoma[12]. USP21 has also verified in affecting CRC progression. For instance, USP21 regulates the ubiquitination of Fra-1 to accelerate metastasis in CRC[13]. Besides, LINC00174 enhances USP21 expression to facilitate cell proliferation and invasion in CRC[14]. However, the regulatory functions of USP21 in CRC progression need more investigations.

In this work, it was demonstrated that USP21 accelerated tumorigenicity and stemness of colorectal cancer by deubiquitinating and stabilizing ZEB1. Our findings manifested that this discovery may be helpful for CRC treatment.

## MATERIALS AND METHODS

### Sample tissues

Twenty paired CRC tissues and adjacent normal tissues from Chaohu Hospital of Anhui Medical University were utilized for this work. These CRC patients have not received treatment, and have signed the informed consents. This study was approved by the Ethics Committee of Chaohu Hospital of Anhui Medical University (No. KYXM-2022-10-011). These gained tissues were kept in liquid nitrogen for next work.

### Cell lines and culture

The normal colonic epithelial cell line (NCM460) and CRC cell lines (HCT-116, SW480, SW620, LoVo) were brought from American Tissue Culture Collection (ATCC, United States). The culturing of these cells was made with RPMI-1640 medium (Gibco, United States) including 10% fetal bovine serum (FBS, Gibco, United States) in an atmosphere with 5% CO<sub>2</sub> at 37 °C.

### Cell transfection

The shRNAs targeting USP21 (sh-USP21) with negative control (sh-NC) and pcDNA3.1 targeting ZEB1 (pcDNA3.1/ZEB1) with negative control (pcDNA3.1), were purchased from GenePharma (Shanghai, China). The transfection of these plasmids into HCT-116 and SW480 cells was made through Lipofectamine 2000 (Invitrogen, United States).

### RT-qPCR

The extraction of RNAs from CRC tissues and cells was made through the TRIzol reagent (Invitrogen, USA). Then, the SuperScript™ II Reverse Transcriptase Kit (Invitrogen, USA) was utilized for doing the transcription from RNA to cDNA. The SYBR Premix Ex Taq™ (Takara, Dalian, China) was adopted to conduct qRT-PCR. The mRNA expression was assessed through the  $2^{-\Delta\Delta C_t}$  method. The primer sequences: USP21: forward, 5'-GCAGGATGCCCAAGAGTT-3', and reverse, 5'-GCAGGGACAGGTCACAAAA-3'; ZEB1: forward, 5'-AGAAGCCAGTGGTCATGATG-3', and reverse, 5'-CCTCAACAACCTCGTGGAAGCATAC-3'; GAPDH (the internal reference): forward, 5'-GAAGGTGAAGTCTGGAGTC-3', and reverse, 5'-GAAGATGGTGATGGGATTTC-3'.

### Western blot

The extracted proteins from CRC cells were performed through RIPA buffer. Next, the separation of proteins was done under 10% SDS-PAGE, then the transferring of proteins to PVDF membranes (Beyotime, Shanghai, China) was conducted. Post sealing by non-fat milk, the primary antibodies against USP21 (1 µg/mL; ab112014; Abcam, Shanghai, China), ZEB1 (1:1,000; ab32503) and GAPDH (the internal reference, 1:2,000; ab9485) were mixed into the membranes for 12 h at 4 °C. Next, the appropriate secondary antibodies (1:1,000; ab7090) were also mixed into the membranes for 2 h. Lastly, the chemiluminescence detection kit (Thermo Fisher Scientific, Inc., United States) was adopted for assessing the blots.

### Colony formation assay

HCT-116 and SW480 cells (1,000 cells/well) were put into the 6-well plate, and cultivated for 2 wk. Next, the fixing (4% paraformaldehyde) and staining (0.1% crystal violet) for colonies were made. The images were gained under a microscope.

### Transwell assay

The cell invasion or migration abilities were evaluated with using Transwell chambers (Corning Life Sciences, Corning, NY, United States) covered with (or not) the Matrigel (Becton Dickinson, United States). The upper chambers were added with HCT-116 and SW480 cells ( $1 \times 10^5$ ) and RPMI-1640 medium (200 µL), and the lower chambers were added with the DMEM medium (600 µL) with 20% FBS. Post 24 h, the invaded and migrated cells were made for the fixing (90% ethanol) and dyeing (0.1% crystal violet). Eventually, the invaded and migrated cells were counted through a microscope (Olympus Corporation, Tokyo, Japan).

### Sphere formation assay

The DMEM/F12 (Gibco, United States) including 1% FBS, 20 ng/mL epithelial growth factor, and 20 ng/mL fibroblast growth factor added into the ultra-low-attachment culture dishes (Corning, United States) was utilized for culturing the HCT-116 and SW480 cells. After 15 days, the spheroids (diameter > 50 µm) were figured up under one microscope (Olympus, Japan).

### Co-immunoprecipitation assay

The lysis of cells was performed under the lysis buffer (P0013, Beyotime) with protease inhibitor cocktail (HY-K0010, MedChemExpress). The cell lysates were added with the indicated antibodies, immunoprecipitation at 4 °C overnight, and then mixed with protein A/G (P2055, Beyotime) at 4 °C for 3 h. After washing, the immunoprecipitates were determined by western blot.

### GST pull-down assay

The glutathione-S-transferase (GST, 100 µg) (ab89494, Abcam, Shanghai, China) and the GST-USP21 fusion protein were mixed in 50 µL glutathione agarose for 1 h. His-ZEB1 fusion protein was mixed into immobilized GST-USP21 and GST. Then, the fusion protein (100 µg) was added. With gentle shaking at 4°C for 12 h, the bound proteins were eluted through elution buffer (10 mmol/L glutathione in PBS, pH 8.0), and examined by immunoblotting.

### Analysis of ubiquitination level

The cell lysates were immunoprecipitated with anti-ZEB1 or anti-ubiquitin antibodies for 24 h at 4 °C. Then, the Protein A-Sepharose beads were appended for 2 h incubation at 4 °C. After being washed with lysis buffer, targeted proteins were collected, and analyzed by western blot.

### In vivo assay

The Animal Care and Use Committee of Beijing Viewsolid Biotechnology Co. LTD (VS2126A00153) approved this work. Male BALB/c nude mice (5-week-old,  $n = 15$ ) were bought from the Vital River company (Beijing, China). Mice were randomly separated into three groups ( $n = 5$  for each group). The mice were subcutaneously injected at the right flanks with the transfected CRC cells. Post 28 d, mice were sacrificed, the size, volume and weight of tumors were recorded.



### IHC assay

The paraffin-embedded sections (4  $\mu$ m) of tumor tissues were performed for dewaxing and re-hydration. After blocking, the sections were added with primary antibody Ki67 (ab16667, 1/200, Abcam, Shanghai, China), USP21 (ab246948, 1/500), ZEB1 (ab203829, 1/100) at 4°C for 12 h, and then added with secondary antibody (1:1000, ab7090). Furthermore, the sections were subjected to the staining by diaminobenzidine (DAB) and re-staining by hematoxylin. At last, images were obtained under a microscope (Nikon, Tokyo, Japan).

### Statistical analysis

SPSS 22.0 statistical software (IBM Corp., Armonk, NY, United States) was employed to make the statistical analysis. The data were presented as the mean  $\pm$  SD. Each experiment was repeated for three times. Pearson correlation analysis was adopted to analyze the correlation between the expressions of USP21 and ZEB1. The survival rate was analyzed through the Kaplan-Meier method. The Student's *t*-test or one-way analysis of variance (ANOVA) was utilized for comparisons in two or more groups. *P* < 0.05 was deemed as statistically significant.

## RESULTS

### USP21 and ZEB1 exhibited higher expression, and resulted into poor prognosis

At first, the mRNA expressions of USP21 and ZEB1 were found to be both up-regulated in CRC tissues compared with adjacent normal tissues (Figure 1A). Additionally, there was a positive correlation between USP21 expression and ZEB1 expression in CRC tissues (Figure 1B). The CRC patients with higher USP21 (or ZEB1) expression had poor prognosis (Figure 1C). The mRNA and protein expressions of USP21 and ZEB1 were both higher in CRC cells (HCT-116, SW480, SW620, LoVo) than that in normal colonic epithelial cells (NCM460) (Figure 1D and E). These data uncovered that USP21 and ZEB1 exhibited higher expression, and resulted into poor prognosis.

### USP21 remained the stability of ZEB1

Through Co-IP and GST pull down assays, it was proved that USP21 interacted with ZEB1 (Figure 2A and B). The knockdown efficiency of USP21 was notarized in Figure 2C. Next, it was discovered that ZEB1 mRNA and protein expressions were both decreased after silencing USP21 (Figure 2D and E). After CHX treatment, the stability of ZEB1 was attenuated after USP21 knockdown (Figure 2F). Moreover, ZEB1 protein expression was reduced after USP21 knockdown, but this change was reversed after MG132 treatment (Figure 2G). The ubiquitination level of ZEB1 was strengthened after USP21 inhibition (Figure 2H). Taken together, USP21 contributed to the stability of ZEB1.

### USP21 strengthened cell proliferation, migration and stemness through regulating ZEB1

Functional experiments were conducted to verify the regulatory effects of USP21/ZEB1 axis in CRC progression. The cell proliferation was decreased after USP21 knockdown, but this effect was offset after ZEB1 overexpression (Figure 3A). In addition, the cell migration and invasion abilities were attenuated after suppressing USP21, but these changes were reversed after overexpressing ZEB1 (Figure 3B and C). The stemness was reduced after silencing USP21, but this effect was rescued after augmenting ZEB1 (Figure 3D). In a word, USP21 strengthened cell proliferation, migration and stemness through regulating ZEB1.

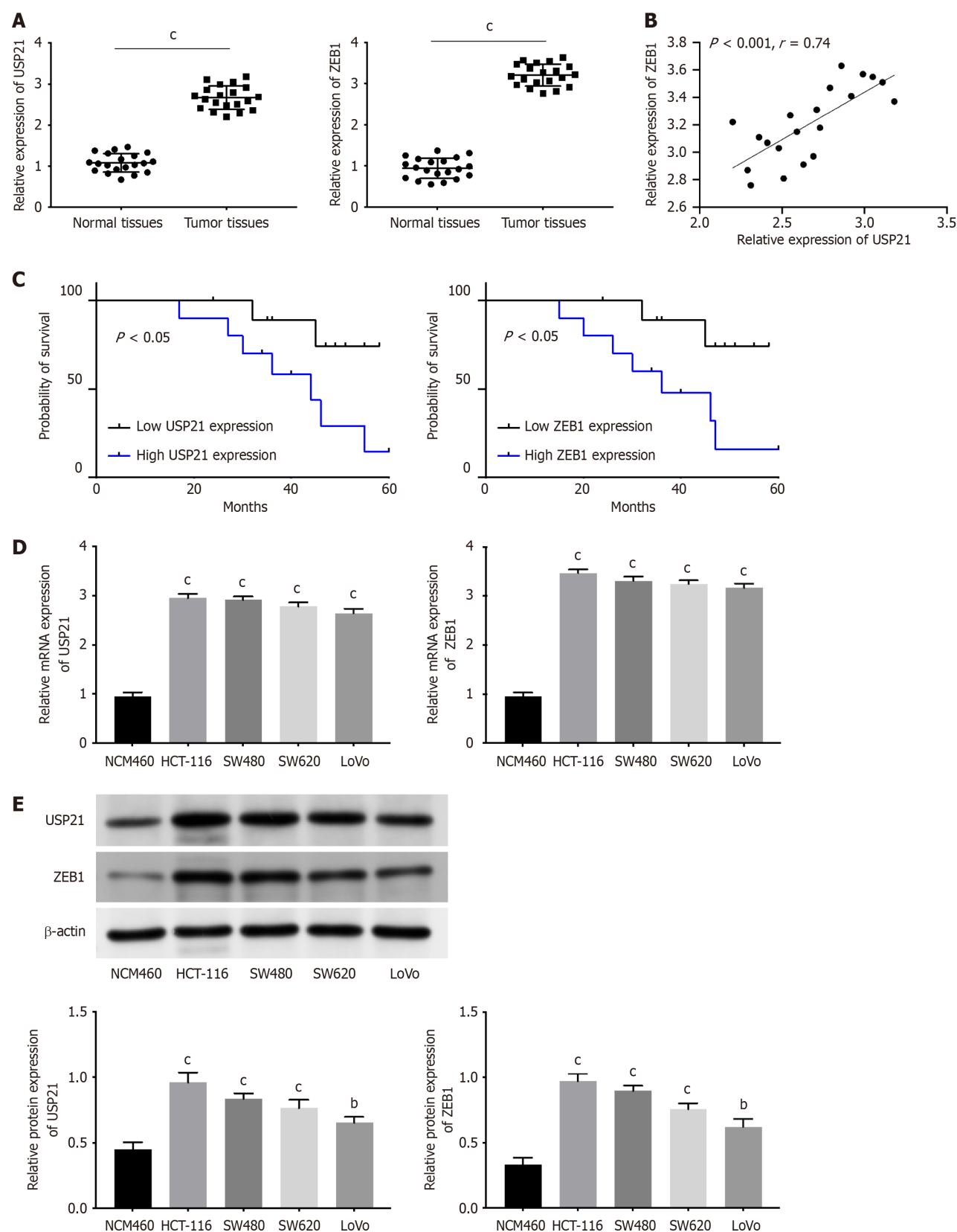
### USP21 aggravated tumor growth in vivo

Last, *in vivo* assays were made. The tumor size, volume and weight were all decreased after USP21 suppression, but these changes were reversed after ZEB1 amplification (Figure 4A and B). Furthermore, the protein expressions of Ki67, USP21 and ZEB1 were down-regulated after silencing USP21, and the down-regulated Ki67 and ZEB1 expressions were rescued after overexpressing ZEB1 (Figure 4C). These findings certified that USP21/ZEB1 axis aggravated tumor growth *in vivo*.

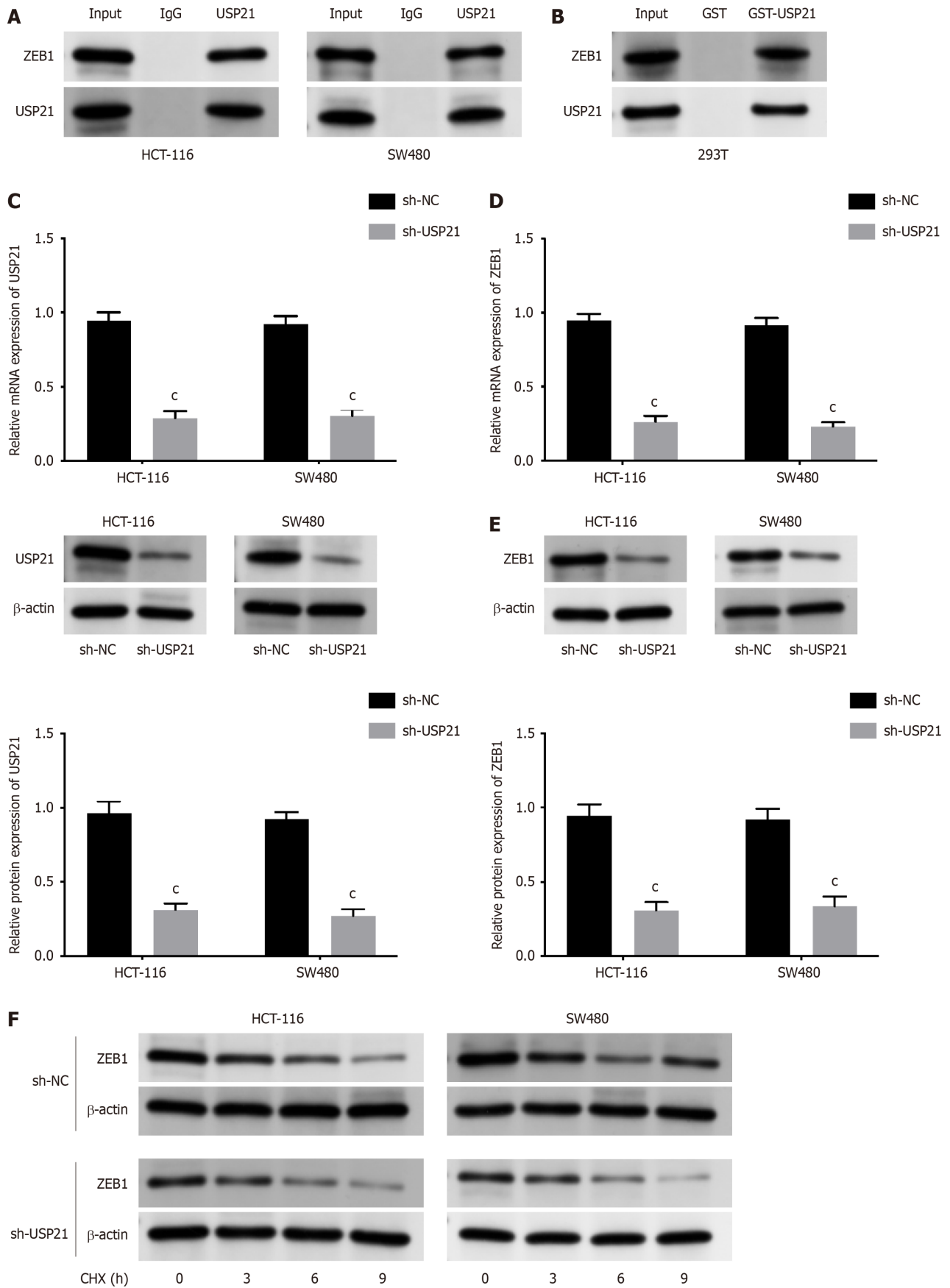
## DISCUSSION

Abundant reports have confirmed that USP21 takes part into the regulation of cancers, also in CRC[13,14]. USP21 has been proved to regulate the ubiquitination and stability of proteins in multiple cancers. For example, USP21 regulates the deubiquitinating and stabilizing of AURKA, thereby facilitating the progression of laryngeal cancer[15]. USP21 deubiquitinates and stabilizes FOXD1 to accelerate self-renewal and tumorigenicity in glioblastoma[16]. In addition, USP21 deubiquitinates FOXM1 to strengthen radioresistance in cervical cancer through the Hippo signaling pathway [17]. Moreover, USP21 decreases the EZH2 ubiquitination to accelerate cell proliferation and metastasis in bladder carcinoma[18]. However, the regulatory functions of USP21 in CRC progression need more investigations.

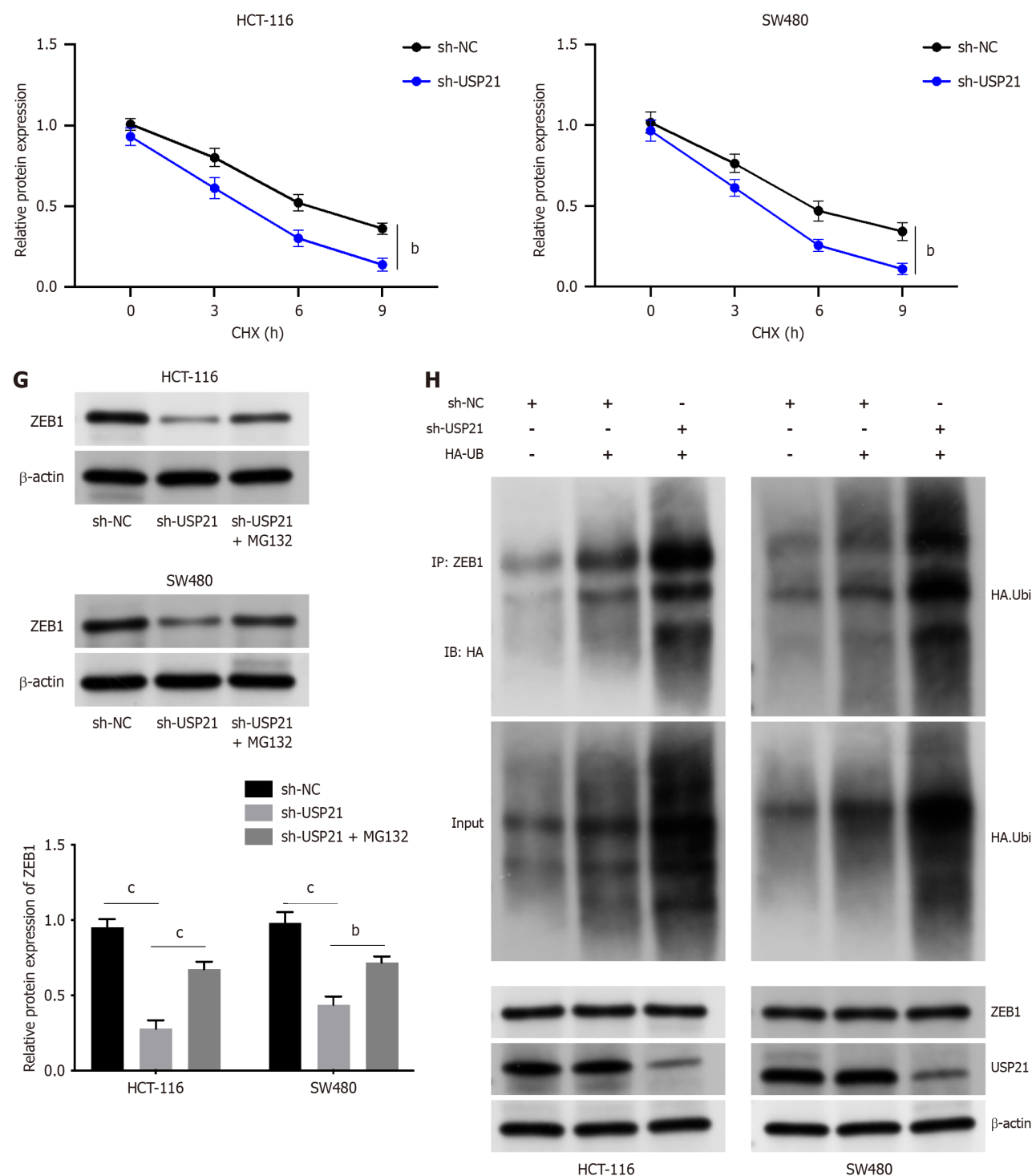
Zinc finger E-box-binding homeobox 1 (ZEB1, a transcription factor) has been uncovered to participate in various malignant tumors. For example, the EMT-activator Zeb1 affects cell plasticity and contributes to metastasis in pancreatic cancer[19]. Additionally, CHFR destabilizes ZEB1 to modulate chemoresistance in triple-negative breast cancer[20]. ZEB1 transcriptionally activates PFKM and heightens Warburg effect, thereby aggravating tumorigenesis and metastasis in hepatocellular carcinoma[21]. Furthermore, ZEB1 reduces SLC3A2 to strengthen chemoresistance to cisplatin in ovarian cancer[22]. Interestingly, USP22 exhibits deubiquitinase activity to affect the maintenance of ZEB1 stability[23]. Therefore,



**Figure 1** Ubiquitin-specific protease 21 and ZEB1 exhibited higher expression, and resulted into poor prognosis. A: The mRNA expressions of ubiquitin-specific protease 21 (USP21) and ZEB1 were confirmed in normal tissues and colorectal cancer (CRC) tissues through real time-quantitative polymerase chain reaction (RT-qPCR); B: The correlation between USP21 and ZEB1 was verified; C: The prognosis of CRC patients with low or high USP21 (or ZEB1) was determined; D: The mRNA expressions of USP21 and ZEB1 were assessed in normal colonic epithelial cells (NCM460) and CRC cells (HCT-116, SW480, SW620, LoVo) through RT-qPCR; E: The protein expressions of USP21 and ZEB1 were assessed in normal colonic epithelial cells (NCM460) and CRC cells (HCT-116, SW480, SW620, LoVo) through western blot.  $^bP < 0.01$ ,  $^cP < 0.001$ . USP21: Ubiquitin-specific protease 21.





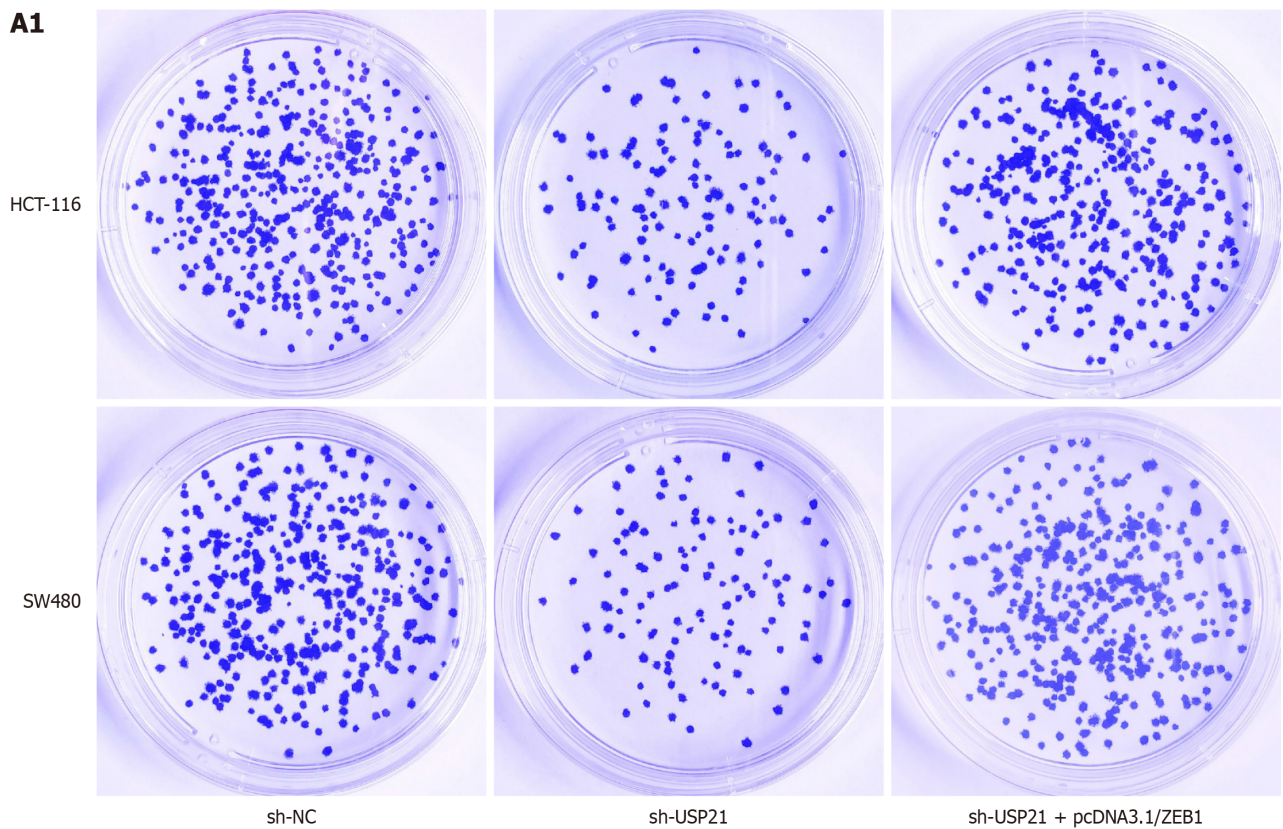


**Figure 2 Ubiquitin-specific protease 21 remained the stability of ZEB1.** A: The interaction between USP21 and ZEB1 was evaluated through Co-IP assay; B: The interaction between USP21 and ZEB1 was detected through GST pull down assay; C: The mRNA and protein expressions of USP21 were examined after USP21 knockdown through real time-quantitative polymerase chain reaction (RT-qPCR) and western blot; D: The mRNA expression of ZEB1 was tested after suppressing USP21 through RT-qPCR; E: The protein expression of ZEB1 was examined after silencing USP21 through western blot; F: The protein expression of ZEB1 was assessed after cyclohexane treatment through western blot; G: The protein expression of ZEB1 was measured after MG132 treatment through western blot; H: The ubiquitination level of ZEB1 was evaluated through western blot. <sup>b</sup>*P* < 0.01, <sup>c</sup>*P* < 0.001. NC: Negative control; CHX: Cyclohexane; USP21: Ubiquitin-specific protease 21.

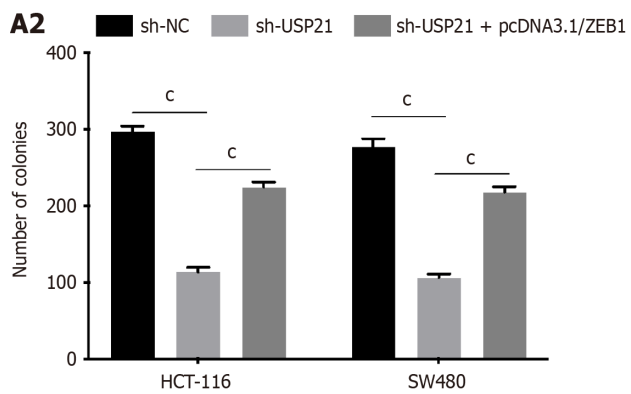
we suspected that USP21 can also regulate ZEB1 ubiquitination and stability. However, the regulatory effects of USP21 on ZEB1 in CRC progression keep unclear. In this study, USP21 and ZEB1 exhibited higher expression in CRC, and resulted into poor prognosis. Moreover, the interaction between USP21 and ZEB1 was further verified, and USP21 contributed to the stability of ZEB1 through modulating ubiquitination level.

Stemness is a key process, and USP21 has been testified to affect stemness in cancers. For example, USP21 combines with GATA3 to affect MAPK1 expression in gastric cancer, thereby modulating tumor growth and stemness[24]. USP21 affects stem cell pluripotency through deubiquitinating Nanog[25]. Besides, USP21 affects the activation of the Wnt

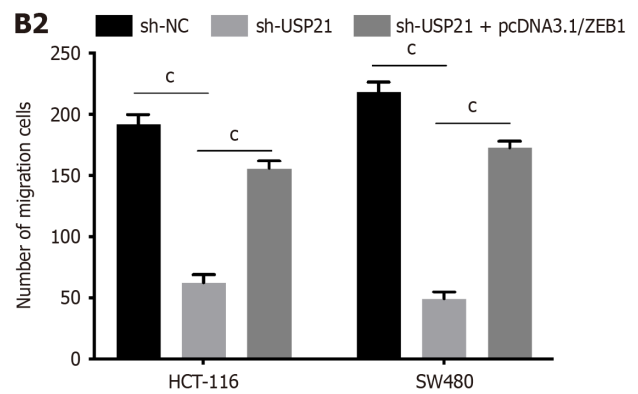
**A1**



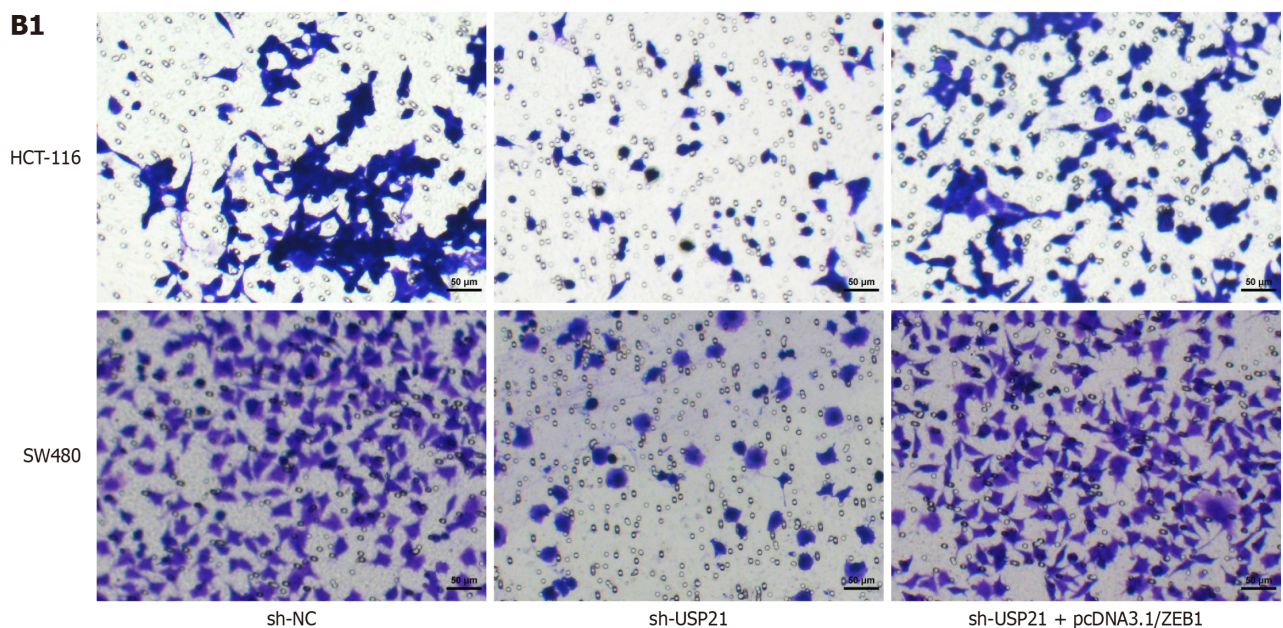
**A2**



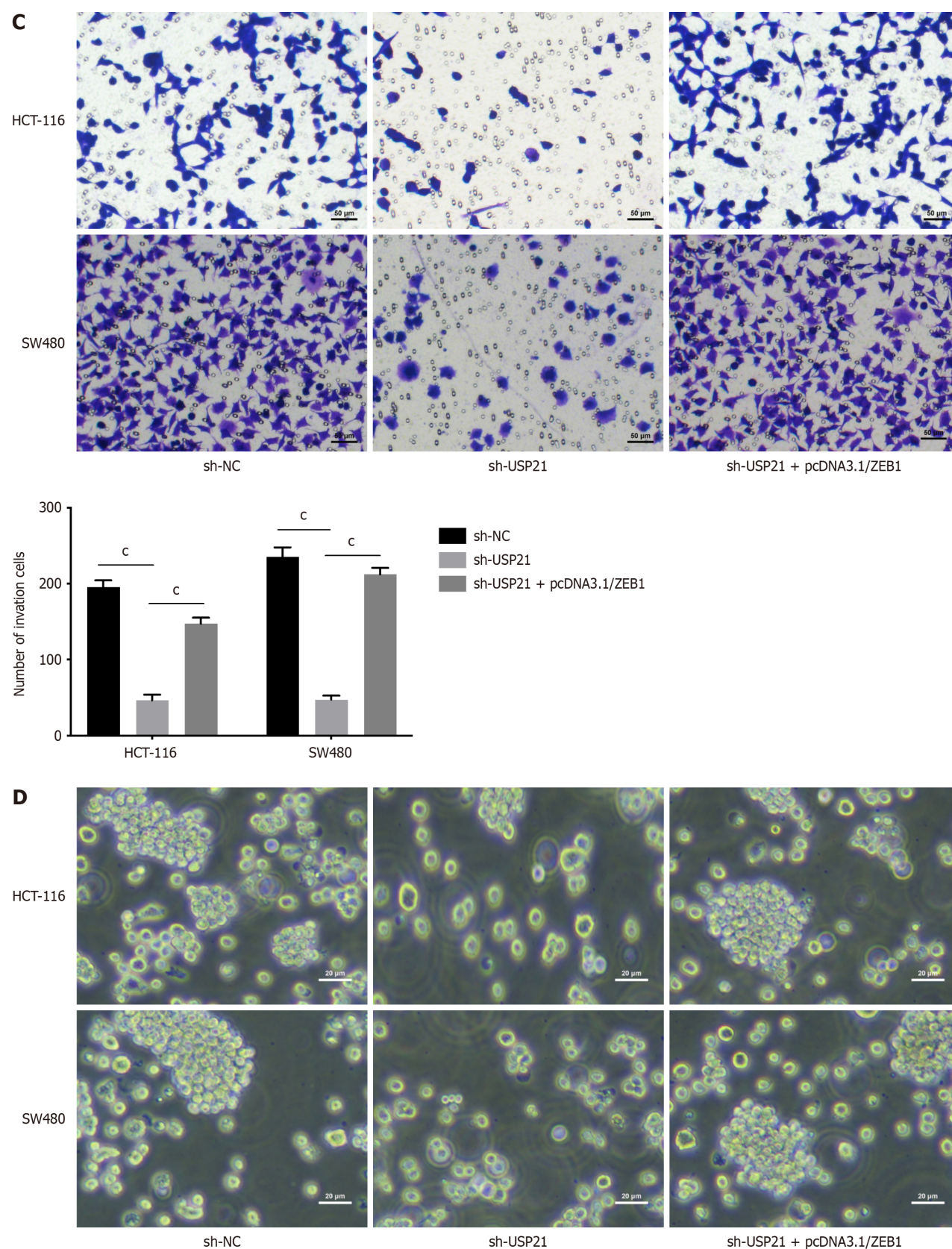
**B2**



**B1**

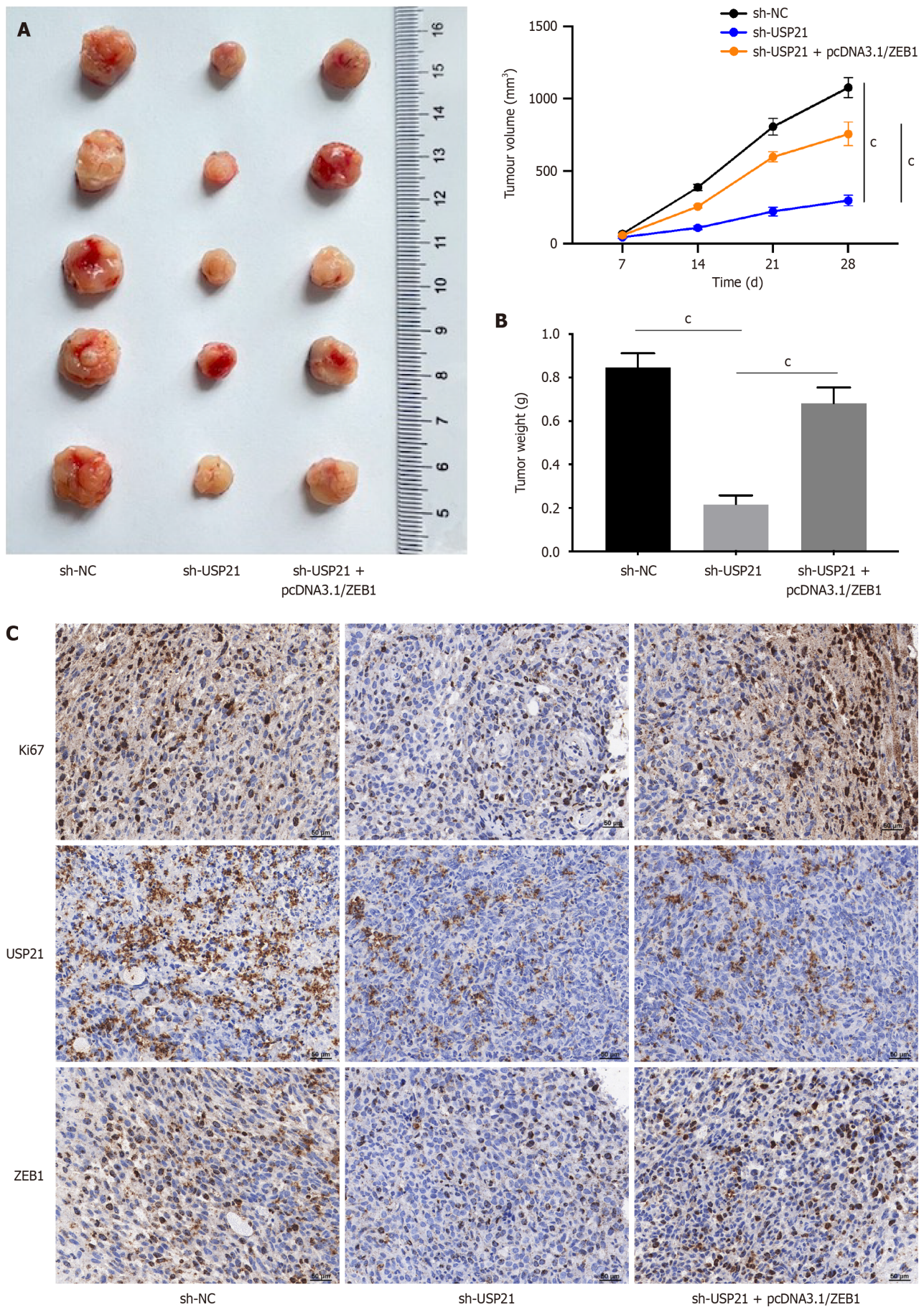






**Figure 3 Ubiquitin-specific protease 21 strengthened cell proliferation, migration and stemness.** Groups were separated into the sh-NC, sh-USP21 and sh-USP21+pcDNA3.1/ZEB1 group. A: The cell proliferation was detected through colony formation assay; B and C: The cell migration and invasion abilities were determined through Transwell assay; D: The stemness was tested through sphere formation assay.  $^*P < 0.001$ . NC: Negative control; USP21: Ubiquitin-specific protease 21.





**Figure 4 Ubiquitin-specific protease 21 aggravated tumor growth *in vivo*.** Groups were separated into the sh-NC, sh-USP21 and sh-USP21+pcDNA3.1/ZEB1 group. A and B: The tumor size, volume and weight were assessed through *in vivo* assays; C: The protein expressions of ki67, USP21 and

ZEB1 in tumors were measured through immunohistochemistry assay. \* $P < 0.001$ . NC: Negative control; USP21: Ubiquitin-specific protease 21.

pathway to facilitate stemness in pancreas cancer[26]. However, the regulatory effects of USP21/ZEB1 axis on stemness in CRC keep indistinct, and need more investigations. In this work, it was verified that USP21 strengthened cell proliferation, migration and stemness through regulating ZEB1. At last, through *in vivo* assays, it was illustrated that USP21/ZEB1 axis aggravated tumor growth.

## CONCLUSION

For the first time, our findings proved that USP21 promoted tumorigenicity and stemness of CRC by deubiquitinating and stabilizing ZEB1. Nevertheless, there are still some limitations in this study. In the future, more experiments were conducted to notarize the other regulatory effects of USP21/ZEB1 axis on CRC progression.

## ARTICLE HIGHLIGHTS

### Research background

Previous studies have illustrated that ubiquitin-specific protease 21 (USP21) and ZEB1 has been confirmed to take part into the regulation of cancers' progression through serving as a facilitator. However, the regulatory functions of USP21, and the relationship between USP21 and ZEB1 in colorectal cancer (CRC) progression need more investigations.

### Research motivation

To search useful bio-targets for CRC prognosis and treatment.

### Research objectives

In order to probe the regulatory functions and the relationship between USP21 and ZEB1 in CRC progression.

### Research methods

The expressions of USP21 and ZEB1 in CRC were evaluated through real time-quantitative polymerase chain reaction (RT-qPCR) and western blot. The prognosis of GC patients with high or low USP21 (or ZEB1) expression was evaluated. The relationship between USP21 and ZEB1 in CRC progression was validated. The regulatory of USP21/ZEB1 axis in CRC progression was assessed *via in vitro* and *in vivo* experiments.

### Research results

USP21 and ZEB1 exhibited higher expression in CRC, and resulted into poor prognosis. USP21 contributed to the stability of ZEB1 through modulating ubiquitination level. Furthermore, results revealed that USP21 strengthened cell proliferation, migration and stemness through regulating ZEB1.

### Research conclusions

USP21 promoted tumorigenicity and stemness of CRC by deubiquitinating and stabilizing ZEB1.

### Research perspectives

Other regulatory functions and related molecular mechanisms of USP21/ZEB1 axis in CRC progression may be investigated in the future, and its application in CRC treatment will be extended.

## FOOTNOTES

**Author contributions:** Lin JJ wrote the manuscript; Lin JJ and Lu YC collected and analyzed the data; all authors read and approved the final manuscript.

**Supported by** Anhui Provincial Health Research Project, No. AHWJ2022c036.

**Institutional review board statement:** This study was approved by the Ethics Committee of Chaohu Hospital of Anhui Medical University (No. KYXM-2022-10-011).

**Institutional animal care and use committee statement:** The Animal Care and Use Committee of Beijing Viewsolid Biotechnology Co. LTD approved this work (No. VS2126A00153).

**Conflict-of-interest statement:** All the authors report no relevant conflicts of interest for this article.



**Data sharing statement:** All the data used to support the findings of this study are included within the article.

**ARRIVE guidelines statement:** The authors have read the ARRIVE guidelines, and the manuscript was prepared and revised according to the ARRIVE guidelines.

**Open-Access:** This article is an open-access article that was selected by an in-house editor and fully peer-reviewed by external reviewers. It is distributed in accordance with the Creative Commons Attribution NonCommercial (CC BY-NC 4.0) license, which permits others to distribute, remix, adapt, build upon this work non-commercially, and license their derivative works on different terms, provided the original work is properly cited and the use is non-commercial. See: <https://creativecommons.org/Licenses/by-nc/4.0/>

**Country/Territory of origin:** China

**ORCID number:** Ye-Cai Lu 0009-0000-1348-4495.

**S-Editor:** Gong ZM

**L-Editor:** A

**P-Editor:** Zheng XM

## REFERENCES

- Dekker E, Tanis PJ, Vleugels JLA, Kasi PM, Wallace MB. Colorectal cancer. *Lancet* 2019; **394**: 1467-1480 [PMID: 31631858 DOI: 10.1016/S0140-6736(19)32319-0]
- Baidoun F, Elshiyk K, Elkeriaie Y, Merjaneh Z, Khoudari G, Sarmini MT, Gad M, Al-Husseini M, Saad A. Colorectal Cancer Epidemiology: Recent Trends and Impact on Outcomes. *Curr Drug Targets* 2021; **22**: 998-1009 [PMID: 33208072 DOI: 10.2174/1389450121999201117115717]
- Popovic D, Vucic D, Dikic I. Ubiquitination in disease pathogenesis and treatment. *Nat Med* 2014; **20**: 1242-1253 [PMID: 25375928 DOI: 10.1038/nm.3739]
- Mevissen TET, Komander D. Mechanisms of Deubiquitinase Specificity and Regulation. *Annu Rev Biochem* 2017; **86**: 159-192 [PMID: 28498721 DOI: 10.1146/annurev-biochem-061516-044916]
- Cockram PE, Kist M, Prakash S, Chen SH, Wertz IE, Vucic D. Ubiquitination in the regulation of inflammatory cell death and cancer. *Cell Death Differ* 2021; **28**: 591-605 [PMID: 33432113 DOI: 10.1038/s41418-020-00708-5]
- Zhan W, Liao X, Liu J, Tian T, Yu L, Li R. USP38 regulates the stemness and chemoresistance of human colorectal cancer via regulation of HDAC3. *Oncogenesis* 2020; **9**: 48 [PMID: 32404892 DOI: 10.1038/s41389-020-0234-z]
- Xu X, Huang A, Cui X, Han K, Hou X, Wang Q, Cui L, Yang Y. Ubiquitin specific peptidase 5 regulates colorectal cancer cell growth by stabilizing Tu translation elongation factor. *Theranostics* 2019; **9**: 4208-4220 [PMID: 31281542 DOI: 10.7150/thno.33803]
- Kosinsky RL, Zerche M, Saul D, Wang X, Wohn L, Wegwitz F, Begus-Nahrman Y, Johnsen SA. USP22 exerts tumor-suppressive functions in colorectal cancer by decreasing mTOR activity. *Cell Death Differ* 2020; **27**: 1328-1340 [PMID: 31527800 DOI: 10.1038/s41418-019-0420-8]
- Wang XM, Yang C, Zhao Y, Xu ZG, Yang W, Wang P, Lin D, Xiong B, Fang JY, Dong C, Zhong B. The deubiquitinase USP25 supports colonic inflammation and bacterial infection and promotes colorectal cancer. *Nat Cancer* 2020; **1**: 811-825 [PMID: 35122046 DOI: 10.1038/s43018-020-0089-4]
- Hou P, Ma X, Yang Z, Zhang Q, Wu CJ, Li J, Tan L, Yao W, Yan L, Zhou X, Kimmelman AC, Lorenzi PL, Zhang J, Jiang S, Spring D, Wang YA, DePinho RA. USP21 deubiquitinase elevates macropinocytosis to enable oncogenic KRAS bypass in pancreatic cancer. *Genes Dev* 2021; **35**: 1327-1332 [PMID: 34531315 DOI: 10.1101/gad.348787.121]
- Wu Y, Guo Y, Wang Q. USP21 accelerates the proliferation and glycolysis of esophageal cancer cells by regulating the STAT3/FOXO1 pathway. *Tissue Cell* 2022; **79**: 101916 [PMID: 36095935 DOI: 10.1016/j.tice.2022.101916]
- Zhou P, Song T, Sun C, He N, Cheng Q, Xiao X, Ran J, Liu M, Xie S. USP21 upregulation in cholangiocarcinoma promotes cell proliferation and migration in a deubiquitinase-dependent manner. *Asia Pac J Clin Oncol* 2021; **17**: 471-477 [PMID: 33052017 DOI: 10.1111/ajco.13480]
- Yun SI, Hong HK, Yeo SY, Kim SH, Cho YB, Kim KK. Ubiquitin-Specific Protease 21 Promotes Colorectal Cancer Metastasis by Acting as a Fra-1 Deubiquitinase. *Cancers (Basel)* 2020; **12** [PMID: 31947604 DOI: 10.3390/cancers12010207]
- Liang W, Liu D, Wu J. c-JUN-induced upregulation of LINC00174 contributes to colorectal cancer proliferation and invasion through accelerating USP21 expression. *Cell Biol Int* 2023; **47**: 1782-1798 [PMID: 37434557 DOI: 10.1002/cbin.12069]
- Wang QD, Shi T, Xu Y, Liu Y, Zhang MJ. USP21 contributes to the aggressiveness of laryngeal cancer cells by deubiquitinating and stabilizing AURKA. *Kaohsiung J Med Sci* 2023; **39**: 354-363 [PMID: 36919585 DOI: 10.1002/kjm2.12649]
- Zhang Q, Chen Z, Tang Q, Wang Z, Lu J, You Y, Wang H. USP21 promotes self-renewal and tumorigenicity of mesenchymal glioblastoma stem cells by deubiquitinating and stabilizing FOXD1. *Cell Death Dis* 2022; **13**: 712 [PMID: 35974001 DOI: 10.1038/s41419-022-05163-3]
- Li Z, Liu X, Yu H, Wang S, Zhao S, Jiang G. USP21 regulates Hippo signaling to promote radioresistance by deubiquitinating FOXM1 in cervical cancer. *Hum Cell* 2022; **35**: 333-347 [PMID: 34825342 DOI: 10.1007/s13577-021-00650-9]
- Chen Y, Zhou B, Chen D. USP21 promotes cell proliferation and metastasis through suppressing EZH2 ubiquitination in bladder carcinoma. *Onco Targets Ther* 2017; **10**: 681-689 [PMID: 28223825 DOI: 10.2147/OTT.S124795]
- Krebs AM, Mitschke J, Laserra Losada M, Schmalhofer O, Boerries M, Busch H, Boettcher M, Mougiakakos D, Reichardt W, Bronsert P, Brunton VG, Pilarsky C, Winkler TH, Brabletz S, Stemmler MP, Brabletz T. The EMT-activator Zeb1 is a key factor for cell plasticity and promotes metastasis in pancreatic cancer. *Nat Cell Biol* 2017; **19**: 518-529 [PMID: 28414315 DOI: 10.1038/ncb3513]
- Luo H, Zhou Z, Huang S, Ma M, Zhao M, Tang L, Quan Y, Zeng Y, Su L, Kim J, Zhang P. CHFR regulates chemoresistance in triple-negative breast cancer through destabilizing ZEB1. *Cell Death Dis* 2021; **12**: 820 [PMID: 34462429 DOI: 10.1038/s41419-021-04114-8]

- 21 **Zhou Y**, Lin F, Wan T, Chen A, Wang H, Jiang B, Zhao W, Liao S, Wang S, Li G, Xu Z, Wang J, Zhang J, Ma H, Lin D, Li Q. ZEB1 enhances Warburg effect to facilitate tumorigenesis and metastasis of HCC by transcriptionally activating PFKM. *Theranostics* 2021; **11**: 5926-5938 [PMID: [33897890](#) DOI: [10.7150/thno.56490](#)]
- 22 **Cui Y**, Qin L, Tian D, Wang T, Fan L, Zhang P, Wang Z. ZEB1 Promotes Chemoresistance to Cisplatin in Ovarian Cancer Cells by Suppressing SLC3A2. *Chemotherapy* 2018; **63**: 262-271 [PMID: [30481785](#) DOI: [10.1159/000493864](#)]
- 23 **Zeng K**, Xie W, Wang C, Wang S, Liu W, Su Y, Lin L, Zou R, Sun G, Zhou B, Wang M, Luan R, Bai Y, Huo Y, Kato S, Zhong X, Zhao Y. USP22 upregulates ZEB1-mediated VEGFA transcription in hepatocellular carcinoma. *Cell Death Dis* 2023; **14**: 194 [PMID: [36906615](#) DOI: [10.1038/s41419-023-05699-y](#)]
- 24 **Guo Q**, Shi D, Lin L, Li H, Wei Y, Li B, Wu D. De-Ubiquitinating Enzymes USP21 Regulate MAPK1 Expression by Binding to Transcription Factor GATA3 to Regulate Tumor Growth and Cell Stemness of Gastric Cancer. *Front Cell Dev Biol* 2021; **9**: 641981 [PMID: [33791299](#) DOI: [10.3389/fcell.2021.641981](#)]
- 25 **Liu X**, Yao Y, Ding H, Han C, Chen Y, Zhang Y, Wang C, Zhang X, Zhai Y, Wang P, Wei W, Zhang J, Zhang L. USP21 deubiquitylates Nanog to regulate protein stability and stem cell pluripotency. *Signal Transduct Target Ther* 2016; **1**: 16024 [PMID: [29263902](#) DOI: [10.1038/sigtrans.2016.24](#)]
- 26 **Hou P**, Ma X, Zhang Q, Wu CJ, Liao W, Li J, Wang H, Zhao J, Zhou X, Guan C, Ackroyd J, Jiang S, Zhang J, Spring DJ, Wang YA, DePinho RA. USP21 deubiquitinase promotes pancreas cancer cell stemness *via* Wnt pathway activation. *Genes Dev* 2019; **33**: 1361-1366 [PMID: [31488580](#) DOI: [10.1101/gad.326314.119](#)]



Published by **Baishideng Publishing Group Inc**  
7041 Koll Center Parkway, Suite 160, Pleasanton, CA 94566, USA

**Telephone:** +1-925-3991568

**E-mail:** [office@baishideng.com](mailto:office@baishideng.com)

**Help Desk:** <https://www.f6publishing.com/helpdesk>

<https://www.wjgnet.com>

