

World Journal of *Gastrointestinal Oncology*

World J Gastrointest Oncol 2024 March 15; 16(3): 571-1090



EDITORIAL

- 571 Synchronous gastric and colon cancers: Important to consider hereditary syndromes and chronic inflammatory disease associations
Shenoy S
- 577 Neutrophil-to-lymphocyte ratio and platelet-to-lymphocyte ratio: Markers predicting immune-checkpoint inhibitor efficacy and immune-related adverse events
Jiang QY, Xue RY
- 583 Early-onset gastrointestinal cancer: An epidemiological reality with great significance and implications
Triantafyllidis JK, Georgiou K, Konstadoulakis MM, Papalois AE

REVIEW

- 598 Management of obstructed colorectal carcinoma in an emergency setting: An update
Pavlidis ET, Galanis IN, Pavlidis TE
- 614 Unraveling the enigma: A comprehensive review of solid pseudopapillary tumor of the pancreas
Xu YC, Fu DL, Yang F

MINIREVIEWS

- 630 Roles and application of exosomes in the development, diagnosis and treatment of gastric cancer
Guan XL, Guan XY, Zhang ZY
- 643 Prognostic and predictive role of immune microenvironment in colorectal cancer
Kuznetsova O, Fedyanin M, Zavalishina L, Moskvina L, Kuznetsova O, Lebedeva A, Tryakin A, Kireeva G, Borshchev G, Tjulandin S, Ignatova E
- 653 Pylorus-preserving gastrectomy for early gastric cancer
Sun KK, Wu YY

ORIGINAL ARTICLE

Case Control Study

- 659 N-glycan biosignatures as a potential diagnostic biomarker for early-stage pancreatic cancer
Wen YR, Lin XW, Zhou YW, Xu L, Zhang JL, Chen CY, He J
- 670 Expression and significance of pigment epithelium-derived factor and vascular endothelial growth factor in colorectal adenoma and cancer
Yang Y, Wen W, Chen FL, Zhang YJ, Liu XC, Yang XY, Hu SS, Jiang Y, Yuan J

- 687 Impact of Alcian blue and periodic acid Schiff expression on the prognosis of gastric signet ring cell carcinoma

Lin J, Chen ZF, Guo GD, Chen X

Retrospective Cohort Study

- 699 Clinical profile and outcomes of hepatocellular carcinoma in primary Budd-Chiari syndrome

Agarwal A, Biswas S, Swaroop S, Aggarwal A, Agarwal A, Jain G, Elhence A, Vaidya A, Gupte A, Mohanka R, Kumar R, Mishra AK, Gamanagatti S, Paul SB, Acharya SK, Shukla A, Shalimar

- 716 Chinese herbal medicine decreases incidence of hepatocellular carcinoma in diabetes mellitus patients with regular insulin management

Lai HC, Cheng JC, Yip HT, Jeng LB, Huang ST

- 732 Combining systemic inflammatory response index and albumin fibrinogen ratio to predict early serious complications and prognosis after resectable gastric cancer

Ren JY, Wang D, Zhu LH, Liu S, Yu M, Cai H

- 750 Mucosa color and size may indicate malignant transformation of chicken skin mucosa-positive colorectal neoplastic polyps

Zhang YJ, Yuan MX, Wen W, Li F, Jian Y, Zhang CM, Yang Y, Chen FL

- 761 Epidemiology, therapy and outcome of hepatocellular carcinoma between 2010 and 2019 in Piedmont, Italy

Bracco C, Gallarate M, Badinella Martini M, Magnino C, D'Agnano S, Canta R, Racca G, Melchio R, Serraino C, Polla Mattiot V, Gollè G, Fenoglio L

- 773 Study on sex differences and potential clinical value of three-dimensional computerized tomography pelvimetry in rectal cancer patients

Zhou XC, Ke FY, Dhamija G, Chen H, Wang Q

Retrospective Study

- 787 High patatin like phospholipase domain containing 8 expression as a biomarker for poor prognosis of colorectal cancer

Zhou PY, Zhu DX, Chen YJ, Feng QY, Mao YH, Zhuang AB, Xu JM

- 798 Combining prognostic value of serum carbohydrate antigen 19-9 and tumor size reduction ratio in pancreatic ductal adenocarcinoma

Xia DQ, Zhou Y, Yang S, Li FF, Tian LY, Li YH, Xu HY, Xiao CZ, Wang W

- 810 Influence of transcatheter arterial embolization on symptom distress and fatigue in liver cancer patients

Yang XM, Yang XY, Wang XY, Gu YX

- 819 T2-weighted imaging-based radiomic-clinical machine learning model for predicting the differentiation of colorectal adenocarcinoma

Zheng HD, Huang QY, Huang QM, Ke XT, Ye K, Lin S, Xu JH

- 833 Predictive value of positive lymph node ratio in patients with locally advanced gastric remnant cancer

Zhuo M, Tian L, Han T, Liu TF, Lin XL, Xiao XY

- 844 Risk of cardiovascular death in patients with hepatocellular carcinoma based on the Fine-Gray model
Zhang YL, Liu ZR, Liu Z, Bai Y, Chi H, Chen DP, Zhang YM, Cui ZL
- 857 Preoperatively predicting vessels encapsulating tumor clusters in hepatocellular carcinoma: Machine learning model based on contrast-enhanced computed tomography
Zhang C, Zhong H, Zhao F, Ma ZY, Dai ZJ, Pang GD
- 875 Comparison of mismatch repair and immune checkpoint protein profile with histopathological parameters in pancreatic, peripapillary/ampullary, and choledochal adenocarcinomas
Aydin AH, Turhan N
- 883 Assessment of programmed death-ligand 1 expression in primary tumors and paired lymph node metastases of gastric adenocarcinoma
Coimbra BC, Pereira MA, Cardili L, Alves VAF, de Mello ES, Ribeiro U Jr, Ramos MFKP

Observational Study

- 894 Identification of breath volatile organic compounds to distinguish pancreatic adenocarcinoma, pancreatic cystic neoplasm, and patients without pancreatic lesions
Tiankanon K, Pungpipattrakul N, Sukaram T, Chaiteerakij R, Rerknimitr R
- 907 Clinical features and prognostic factors of duodenal neuroendocrine tumours: A comparative study of ampullary and nonampullary regions
Fang S, Shi YP, Wang L, Han S, Shi YQ

Clinical and Translational Research

- 919 Construction of an immune-related gene signature for overall survival prediction and immune infiltration in gastric cancer
Ma XT, Liu X, Ou K, Yang L
- 933 Clinical efficacy and pathological outcomes of transanal endoscopic intersphincteric resection for low rectal cancer
Xu ZW, Zhu JT, Bai HY, Yu XJ, Hong QQ, You J
- 945 Identification of a novel inflammatory-related gene signature to evaluate the prognosis of gastric cancer patients
Hu JL, Huang MJ, Halina H, Qiao K, Wang ZY, Lu JJ, Yin CL, Gao F

Basic Study

- 968 Verteporfin fluorescence in antineoplastic-treated pancreatic cancer cells found concentrated in mitochondria
Zhang YQ, Liu QH, Liu L, Guo PY, Wang RZ, Ba ZC
- 979 Effects of *Helicobacter pylori* and Moluodan on the Wnt/ β -catenin signaling pathway in mice with precancerous gastric cancer lesions
Wang YM, Luo ZW, Shu YL, Zhou X, Wang LQ, Liang CH, Wu CQ, Li CP

- 991** Mitochondrial carrier homolog 2 increases malignant phenotype of human gastric epithelial cells and promotes proliferation, invasion, and migration of gastric cancer cells
Zhang JW, Huang LY, Li YN, Tian Y, Yu J, Wang XF
- 1006** Ubiquitin-specific protease 21 promotes tumorigenicity and stemness of colorectal cancer by deubiquitinating and stabilizing ZEB1
Lin JJ, Lu YC
- 1019** Long non-coding RNA GATA6-AS1 is mediated by N6-methyladenosine methylation and inhibits the proliferation and metastasis of gastric cancer
Shen JJ, Li MC, Tian SQ, Chen WM
- 1029** CALD1 facilitates epithelial-mesenchymal transition progression in gastric cancer cells by modulating the PI3K-Akt pathway
Ma WQ, Miao MC, Ding PA, Tan BB, Liu WB, Guo S, Er LM, Zhang ZD, Zhao Q

META-ANALYSIS

- 1046** Efficacy and safety of perioperative therapy for locally resectable gastric cancer: A network meta-analysis of randomized clinical trials
Kuang ZY, Sun QH, Cao LC, Ma XY, Wang JX, Liu KX, Li J

SCIENTOMETRICS

- 1059** Insights into the history and tendency of glycosylation and digestive system tumor: A bibliometric-based visual analysis
Jiang J, Luo Z, Zhang RC, Wang YL, Zhang J, Duan MY, Qiu ZJ, Huang C

CASE REPORT

- 1076** Managing end-stage carcinoid heart disease: A case report and literature review
Bulj N, Tomasic V, Cigrovski Berkovic M
- 1084** Hemorrhagic cystitis in gastric cancer after nanoparticle albumin-bound paclitaxel: A case report
Zhang XJ, Lou J

ABOUT COVER

Peer Review of *World Journal of Gastrointestinal Oncology*, Noha Elkady, MD, Assistant Professor, Department of Pathology, Faculty of Medicine Menoufia University, Shibin Elkom 32511, Egypt. drnohaelkady@gmail.com

AIMS AND SCOPE

The primary aim of *World Journal of Gastrointestinal Oncology* (WJGO, *World J Gastrointest Oncol*) is to provide scholars and readers from various fields of gastrointestinal oncology with a platform to publish high-quality basic and clinical research articles and communicate their research findings online.

WJGO mainly publishes articles reporting research results and findings obtained in the field of gastrointestinal oncology and covering a wide range of topics including liver cell adenoma, gastric neoplasms, appendiceal neoplasms, biliary tract neoplasms, hepatocellular carcinoma, pancreatic carcinoma, cecal neoplasms, colonic neoplasms, colorectal neoplasms, duodenal neoplasms, esophageal neoplasms, gallbladder neoplasms, *etc.*

INDEXING/ABSTRACTING

The WJGO is now abstracted and indexed in PubMed, PubMed Central, Science Citation Index Expanded (SCIE, also known as SciSearch®), Journal Citation Reports/Science Edition, Scopus, Reference Citation Analysis, China Science and Technology Journal Database, and Superstar Journals Database. The 2023 edition of Journal Citation Reports® cites the 2022 impact factor (IF) for WJGO as 3.0; IF without journal self cites: 2.9; 5-year IF: 3.0; Journal Citation Indicator: 0.49; Ranking: 157 among 241 journals in oncology; Quartile category: Q3; Ranking: 58 among 93 journals in gastroenterology and hepatology; and Quartile category: Q3. The WJGO's CiteScore for 2022 is 4.1 and Scopus CiteScore rank 2022: Gastroenterology is 71/149; Oncology is 197/366.

RESPONSIBLE EDITORS FOR THIS ISSUE

Production Editor: Xiang-Di Zhang; Production Department Director: Xiang Li; Editorial Office Director: Jia-Ru Fan.

NAME OF JOURNAL

World Journal of Gastrointestinal Oncology

ISSN

ISSN 1948-5204 (online)

LAUNCH DATE

February 15, 2009

FREQUENCY

Monthly

EDITORS-IN-CHIEF

Monjur Ahmed, Florin Burada

EDITORIAL BOARD MEMBERS

<https://www.wjgnet.com/1948-5204/editorialboard.htm>

PUBLICATION DATE

March 15, 2024

COPYRIGHT

© 2024 Baishideng Publishing Group Inc

INSTRUCTIONS TO AUTHORS

<https://www.wjgnet.com/bpg/gerinfo/204>

GUIDELINES FOR ETHICS DOCUMENTS

<https://www.wjgnet.com/bpg/GerInfo/287>

GUIDELINES FOR NON-NATIVE SPEAKERS OF ENGLISH

<https://www.wjgnet.com/bpg/gerinfo/240>

PUBLICATION ETHICS

<https://www.wjgnet.com/bpg/GerInfo/288>

PUBLICATION MISCONDUCT

<https://www.wjgnet.com/bpg/gerinfo/208>

ARTICLE PROCESSING CHARGE

<https://www.wjgnet.com/bpg/gerinfo/242>

STEPS FOR SUBMITTING MANUSCRIPTS

<https://www.wjgnet.com/bpg/GerInfo/239>

ONLINE SUBMISSION

<https://www.f6publishing.com>



Retrospective Study

Combining prognostic value of serum carbohydrate antigen 19-9 and tumor size reduction ratio in pancreatic ductal adenocarcinoma

Dong-Qin Xia, Yong Zhou, Shuang Yang, Fang-Fei Li, Li-Ya Tian, Yan-Hua Li, Hai-Yan Xu, Cai-Zhi Xiao, Wei Wang

Specialty type: Oncology

Provenance and peer review:

Unsolicited article; Externally peer reviewed.

Peer-review model: Single blind

Peer-review report's scientific quality classification

Grade A (Excellent): 0

Grade B (Very good): B

Grade C (Good): C

Grade D (Fair): D

Grade E (Poor): 0

P-Reviewer: Christodoulidis G, Greece; Kobayashi S, Japan

Received: September 19, 2023

Peer-review started: September 19, 2023

First decision: December 5, 2023

Revised: December 15, 2023

Accepted: January 27, 2024

Article in press: January 27, 2024

Published online: March 15, 2024



Dong-Qin Xia, Shuang Yang, Fang-Fei Li, Li-Ya Tian, Yan-Hua Li, Hai-Yan Xu, Cai-Zhi Xiao, Wei Wang, Oncology Treatment Center of Traditional Chinese Medicine, Chongqing University Cancer Hospital, Chongqing 400030, China

Yong Zhou, Department of Oncology, Chongqing Weisiteng Biotech Translational Research Institute, Chongqing 430039, China

Yong Zhou, Chongqing Key Laboratory on Big Data for Bio Intelligence, Chongqing University of Posts and Telecommunications, Chongqing 430065, China

Corresponding author: Wei Wang, MD, PhD, Professor, Oncology Treatment Center of Traditional Chinese Medicine, Chongqing University Cancer Hospital, No. 181 Hanyu Road, Chongqing 400030, China. zuailicp@126.com

Abstract

BACKGROUND

Pancreatic ductal adenocarcinoma (PDAC) is a common cancer with increasing morbidity and mortality due to changes of social environment.

AIM

To evaluate the significance of serum carbohydrate antigen 19-9 (CA19-9) and tumor size changes pre- and post-neoadjuvant therapy (NAT).

METHODS

This retrospective study was conducted at the Chongqing Key Laboratory of Translational Research for Cancer Metastasis and Individualized Treatment, Chongqing University Cancer Hospital. This study specifically assessed CA19-9 levels and tumor size before and after NAT.

RESULTS

A total of 156 patients who completed NAT and subsequently underwent tumor resection were included in this study. The average age was 65.4 ± 10.6 years and 72 (46.2%) patients were female. Before survival analysis, we defined the post-NAT serum CA19-9 level/pre-NAT serum CA19-9 level as the CA19-9 ratio (CR). The patients were divided into three groups: $CR < 0.5$, $CR > 0.5$ and $CR > 1$. With regard to tumor size measured by both computed tomography and magnetic resonance imaging, we defined the post-NAT tumor size/pre-NAT

tumor size as the tumor size ratio (TR). The patients were then divided into three groups: TR < 0.5, TR > 0.5 and < 1 and TR > 1. Based on these groups divided according to CR and TR, we performed both overall survival (OS) and disease-free survival (DFS) analyses. Log-rank tests showed that both OS and DFS were significantly different among the groups according to CR and TR ($P < 0.05$). CR and TR after NAT were associated with increased odds of achieving a complete or near-complete pathologic response. Moreover, CR (hazard ratio: 1.721, 95% CI: 1.373-3.762; $P = 0.006$), and TR (hazard ratio: 1.435, 95% CI: 1.275-4.363; $P = 0.014$) were identified as independent factors associated with OS.

CONCLUSION

This study demonstrated that post-NAT serum CA19-9 level/pre-NAT serum CA19-9 level and post-NAT tumor size/pre-NAT tumor size were independent factors associated with OS in patients with PDAC who received NAT and subsequent surgical resection.

Key Words: Pancreatic ductal adenocarcinoma; Carbohydrate antigen 19-9; Tumor size; Pathologic response; Biomarkers

©The Author(s) 2024. Published by Baishideng Publishing Group Inc. All rights reserved.

Core Tip: Our study demonstrated that post-neoadjuvant therapy (NAT) serum carbohydrate antigen 19-9 (CA19-9) level/pre-NAT serum CA19-9 level and post-NAT tumor size/pre-NAT tumor size were independent factors associated with overall survival for patients receiving NAT and subsequently surgical resection for pancreatic ductal adenocarcinoma.

Citation: Xia DQ, Zhou Y, Yang S, Li FF, Tian LY, Li YH, Xu HY, Xiao CZ, Wang W. Combining prognostic value of serum carbohydrate antigen 19-9 and tumor size reduction ratio in pancreatic ductal adenocarcinoma. *World J Gastrointest Oncol* 2024; 16(3): 798-809

URL: <https://www.wjgnet.com/1948-5204/full/v16/i3/798.htm>

DOI: <https://dx.doi.org/10.4251/wjgo.v16.i3.798>

INTRODUCTION

Pancreatic ductal adenocarcinoma (PDAC) is a relatively common cancer with increasing morbidity and mortality due to changes of social environment. Cancer-related death was the second leading cause of death in 2019, with PDAC the third most common cause of cancer death[1,2]. At the time of diagnosis, less than 20% of patients are eligible for curative surgery. For patients with advanced pancreatic cancer (either locally advanced or metastatic disease), the mainstay of treatment is systemic chemotherapy[3]. Gemcitabine-based regimens and 5-FU-based regimens display survival benefit and have been recommended as first-line therapies. Recently researchers have demonstrated that neoadjuvant therapy (NAT), including chemotherapy and radiotherapy, is related with increased R0 surgical resection and the overall survival (OS), especially those with distant and locally advanced PDAC[4-6].

Carbohydrate antigen 19-9 (CA19-9) is a dialkylated Lewis blood group antigen and is the most widely investigated tumor marker in patients with PDAC. CA19-9 has proven useful for the diagnosis of PDAC in symptomatic patients with a sensitivity and specificity of 79%-81% and 82%-90%, respectively[7,8]. Previous studies concluded that CA19-9 was an ineffective screening tool in asymptomatic patients. Nearly 7% of patients lack this tumor antigen and may be non-secretors[9,10]. Kane *et al*[11], in a retrospective analysis, showed that serum CA19-9 is significantly upregulated compared with the normal range to 2 years prior to the first diagnosis of PDAC. Pre-and post-operative CA19-9 levels and the changing of CA19-9 levels after operation might even predict prognosis of patients after resection. Furthermore, studies have showed that CA19-9 levels were related with tumor size and the stage[12,13]. However, there were several limitations when CA19-9 was identified as a biomarker: The routine use of CA19-9 as a PDAC screening tool in the general population is invalid, and because the incidence rate of PDAC in the general population is relatively low, the positive predictive value is low. This is also reflected in two large-scale population studies. In addition, false positive results were observed in benign pancreatic and biliary diseases such as cholangitis, pancreatitis, and obstructive jaundice. In addition, liver cysts and pancreatic cysts may interfere with CA19-9 levels. Despite these challenges, the use of CA19-9 has shifted from screening biomarkers to prognostic biomarkers[14-17].

To address this issue, and due to the increasing utilization and importance of NAT in PDAC treatment, it is necessary to identify biomarkers of the response to guide the management of these patients. In particular, the role of serum CA19-9 and tumor size in predicting resectability, pathological response, disease recurrence, and OS has been examined. Research has shown that changes in tumor size and serum CA19-9 during NAT can capture individual differences that cannot be recognized by individual measurements at a single time point.

This study aimed to evaluate the significance of serum CA19-9 and tumor size changes pre-and post-NAT. The ratio of post-NAT serum CA19-9 level/pre-NAT serum CA19-9 level and the ratio of post-NAT tumor size/pre-NAT tumor size were used to identify the prognostic value of these factors in patients with PDAC. Moreover, we evaluated the combined prognostic value of these factors in predicting OS in patients with PDAC.

MATERIALS AND METHODS

Participants

This retrospective study was conducted at the Chongqing Key Laboratory of Translational Research for Cancer Metastasis and Individualized Treatment, Chongqing University Cancer Hospital.

Inclusion criteria: Patients aged 18–70 years; have a histopathological confirmed diagnosis of PDAC at stage IA to IIB (the 8th edition of the American Joint Committee on Cancer staging system); be deemed suitable for potentially R0 surgical resection; have an Eastern Cooperative Oncology Group performance status score of 0 or 1; and have measurable disease and adequate pulmonary and organ function.

Exclusion criteria: Multiple primary malignancies, active or history of autoimmune disease, active or suspected interstitial lung disease or moderate-to-severe pneumonia, human immunodeficiency virus or active hepatitis B or C virus infection, previous systemic antitumor therapy and chest radiation, and previous use of immunostimulants, immunosuppressants, and live vaccine within 4 wk before the first dose of study treatment.

Variables and definitions

Collected variables included age, sex, comorbidities, body mass index, National Comprehensive Cancer Network (NCCN) resectability definitions and criteria, tumor size, serum levels of CA19-9, resection status, margin status, and pathologic response to NAT following resection. Comorbidities were evaluated using the Charlson Comorbidity Index. Patients were classified as upfront resectable, borderline resectable, and locally advanced according to the NCCN resectability criteria and were evaluated by a multidisciplinary panel of experts, including hepatopancreatobiliary surgeons, medical oncologists, radiation oncologists, and radiologists using pancreatic protocol computed tomography (CT).

The study included CA19-9 levels after resolution of biliary obstruction, with total bilirubin less than 2 mg/dL. Levels of CA19-9 were compared against laboratory references. The CA19-9 response throughout surveillance was stratified on the basis of normalization. Levels of CA19-9 were assessed at diagnosis, preoperatively, after resection, and at 6-mo follow-up intervals. Patients were included in the study if they had all baseline data and a minimum of one postoperative data point. This study specifically assessed CA19-9 levels and tumor size before and after NAT. Pre-operative levels closest to the operative date but within 4 wk were recorded. Pancreatic protocol multidetector CT scans (MDCT) were obtained at these 6-mo intervals to assess recurrence. All charts with discordance between CA19-9 and MDCT scan results were re-reviewed. Recurrence was defined as radiographic evidence of disease based on radiologist, multidisciplinary tumor board review of scans, or both. Levels of CA19-9 at baseline and at follow-up assessment were correlated with disease-free survival (DFS) and OS.

The primary endpoints of this study were OS and DFS. Pathologic complete response was evaluated and defined as the absence of viable tumor cells in the resected specimen. Pathologic response to treatment was defined according to the College of American Pathologists as complete, near-complete, partial, or poor response. Overall response rate (ORR) was determined by the investigator, with ORR defined as the proportion of patients with complete response or partial response (PR) according to Response Evaluation Criteria in Solid Tumors version 1.1 (RECIST version 1.1). DFS was defined as the time from the first dose of the study drug to disease progression, local recurrence, distant metastasis, or death, whichever occurred first. Treatment-related adverse events were monitored and recorded.

Statistical analysis

The *t*-test was employed to evaluate the differences in microbiome species abundance between the groups. Two-sided *P* values were used, and the significance level was set at 0.05 for all analyses unless otherwise stated. SPSS software (version 26; IBM Corp., Armonk, NY, United States) and R software (version 4.1.2) were used for statistical analyses.

RESULTS

Patients and treatment

Between July 2, 2021 and May 17, 2022, a total of 156 patients with histopathologically confirmed PDAC were screened for eligibility. These patients met the inclusion criteria and were enrolled in the study. All 156 patients completed NAT and subsequently underwent tumor resection. According to the scheduled NAT protocol, 87.2% (136/156) completed NAT. The average age of the patients was 65.4 ± 10.6 years and 72 (46.2%) were female. The median follow-up period was 34.3 months (95%CI: 26.5–56.3). Most of the patients underwent pancreaticoduodenectomy ($n = 117$, 75%), followed by distal pancreatectomy ($n = 30$, 19.2%) and distal pancreatectomy with celiac axis resection ($n = 9$, 4.8%). The majority ($n = 88$, 56.4%) had open procedures, but 50 patients (32.1%) underwent laparoscopic resection and 18 (11.5%) had robotic resection. Patients were classified as resectable PDAC ($n = 30$, 19.2%), 76 (48.7%) as borderline resectable PDAC, and 50 (32.1%) as locally advanced PDAC, according to the NCCN resectability criteria. Detailed results of the patient cohort are presented in [Table 1](#).

OS and DFS

Prior to survival analysis, we defined the post-NAT serum CA19-9 level/pre-NAT serum CA19-9 level as the CA19-9 ratio (CR). The patients were then divided into the following three groups: $CR < 0.5$, $CR > 0.5$ and < 1 and $CR > 1$. With respect to tumor size measured by both CT and magnetic resonance imaging, we defined the post-NAT tumor size/pre-NAT tumor size as the tumor size ratio (TR). We then divided the patients into the following three groups: $TR < 0.5$, $TR >$

Table 1 Characteristics of all pancreatic ductal adenocarcinoma patients

Variables	Total patients, <i>n</i> = 156	%
Age in yr	65.4 ± 10.6	
Sex		
Female	72	46.2
Male	84	53.8
ASA-score classification		
2	58	37.2
3	60	62.8
BMI	23.3 ± 6.5	
CR		
< 0.5	45	28.8
≥ 0.5 or < 1	90	57.7
≥ 1	21	13.5
Charlson comorbidity Index		
0	117	75
1	29	18.6
2	10	6.4
Tumor and pathologic characteristics		
AJCC TNM stage		
Ia	12	7.7
Ib	41	26.3
IIa	58	37.2
IIb	45	28.8
Grade		
0	10	6.4
G1	35	22.4
G2	75	48.1
G3	36	23.1
Neoadjuvant Chx		
Yes	128	82.1
No	28	17.9
Neoadjuvant Rtx		
Yes	37	33.7
No	119	76.3
TR		
< 0.5	4	2.6
≥ 0.5 or < 1	123	78.8
≥ 1	29	18.6
Neural invasion		
Yes	65	41.7
No	91	58.3
Vascular invasion		

Yes	76	48.7
No	80	51.3
Positive lymph nodes		
0	50	32.1
1-2	37	33.7
> 2	69	44.2
Tumor resection		
R0	65	41.7
R1	91	58.3
Operation type		
Whipple	117	75.0
Distal pancreatectomy	30	19.2
Distal pancreatectomy with celiac axis resection	9	4.8

AJCC: American Joint Committee on Cancer; ASA: American Society of Anesthesiologists; BMI: Body mass index; Chx: Chemotherapy; CR: Carbohydrate antigen 19-9 ratio; Rtx: Radiotherapy; TR: Tumor size ratio.

0.5 and < 1 and $TR > 1$. Based on these groups divided according to CR and TR, we determined both OS and DFS. Log-rank tests showed that both OS and DFS were significantly different among the groups divided according to CR and TR ($P < 0.05$). Kaplan-Meier curves for OS and DFS are presented for CR in [Figure 1](#) and TR in [Figure 2](#), respectively.

Efficacy and pathologic response

After 4-6 cycles of preoperative treatment with FOLFIRINOX or gemcitabine combined with nab-paclitaxel, 138 of 156 patients (88.6%, 95%CI: 77.5%-99.7%) had an objective response, with 10 patients (28.6%) achieving complete response, 21 patients (60%) achieving PR, and 60 patients (11.4%) achieving stable disease. Eighteen patients had progressive disease during NAT. After dividing the patients into different groups according to CR and TR, the efficacy of NAT is shown in [Figure 3A](#) and [B](#). Furthermore, univariable analyses revealed that female sex, TNM stage, neoadjuvant chemotherapy, CR and TR were associated with complete or near-complete pathologic responses. Multivariable analyses identified that neoadjuvant chemotherapy, CR and TR were associated with increased odds of achieving a complete or near-complete pathologic response. Detailed results of the model are presented in [Figure 3C](#).

Multivariable analysis to identify prognostic factors associated with OS

Cox proportional hazards models were used to quantify the prognostic factors associated with OS in patients with PDAC. The results of both univariable and multivariable analysis are shown in [Table 2](#). Following univariable analysis, a multivariable analysis was performed to evaluate the factors that showed statistical significance in univariable analysis. After adjusting for competing risk factors, TNM stage [hazard ratio (HR): 1.526, 95%CI: 1.226-4.165; $P = 0.007$], vascular invasion (HR: 1.653, 95%CI: 1.253-3.651; $P = 0.021$), CR (HR: 1.721, 95%CI: 1.373-3.762; $P = 0.006$), and TR (HR: 1.435, 95%CI: 1.275-4.363; $P = 0.014$) were identified as independent factors associated with OS. Interestingly, we found that both CR and TR were independent risk factors for OS in PDAC patients. Furthermore, as shown in [Figure 4A](#), we found that in patients with a $TR < 0.5$, 24 patients had $CR < 0.5$, 10 patients had $CR \geq 0.5$ and < 1 , and 1 patient had $CR \geq 1$. In patients with a $TR \geq 0.5$ and < 1 , 21 patients had $CR < 0.5$, 65 patients had $CR \geq 0.5$ and < 1 and 14 patients had $CR \geq 1$. In patients with a $TR \geq 1$, 0 patients had $CR < 0.5$, 15 patients had $CR \geq 0.5$ and < 1 and 6 patients had $CR \geq 1$. Furthermore, the area under the receiver operating characteristic curves (AUROCs) were determined to compare the predictive values of CR, TR and the combined predictive value of CR and TR. The CR showed a significantly improved predictive value (AUROC: 0.674, 95%CI: 0.558-0.734) than the TR (AUROC: 0.681, 95%CI: 0.547-0.728, shown in [Figure 4B](#) and [C](#)). After combining both CR and TR, the model showed significantly improved predictive value compared with the single variables (AUROC: 0.758, 95%CI: 0.684-0.815) as shown in [Figure 4D](#).

DISCUSSION

There have been several studies on the prognostic value of serum CA19-9 and tumor size changes in patients with PDAC undergoing NAT[14,18,19]. However, to our knowledge, this is the first study to evaluate the combined value of CA19-9 reduction and tumor size reduction following NAT with chemotherapy plus radiotherapy in patients with potentially resectable PDAC. NAT did not increase surgical complexity, with 43.6% of patients undergoing minimally invasive surgery[20-22].

Table 2 Cox proportional hazard regression analysis of patients' demographic and clinical characteristics related with overall survival

Variable	Univariate			Multivariate		
	HR	95%CI	P value	HR	95%CI	P value
Age in yr, median range	1.043	0.795-1.149	0.857			
Sex, male/female	0.948	0.743-1.219	0.395			
ASA score classification, 0/1 or 2	1.103	0.854-1.754	0.194			
BMI	0.931	0.803-1.140	0.454			
TNM stage, I or II/III	1.436	1.217-2.695	0.015	1.526	1.226-4.165	0.007
Neoadjuvant Chx, yes/no	1.201	1.114-2.742	0.024			
Neoadjuvant Rtx, yes/no	1.121	0.901-1.537	0.142			
Neural invasion, yes/no	1.103	0.965-2.542	0.104			
Vascular invasion, yes/no	1.439	1.294-3.594	0.003	1.653	1.253-3.651	0.021
Positive lymph nodes, yes/no	1.729	1.487-4.325	0.001			
Tumor resection, R0/R1	0.568	0.321-0.843	0.005			
Operation type, Whipple	1.104	0.549-2.130	0.392			
CR, ≥ 1 / < 1	1.796	1.429-4.104	0.001	1.721	1.373-3.762	0.006
TR, ≥ 1 / < 1	1.573	1.282-2.752	0.012	1.435	1.275-4.363	0.014

BMI: Body mass index; Chx: Chemotherapy; CR: Carbohydrate antigen 19-9 ratio; Rtx: Radiotherapy; TR: Tumor size ratio.

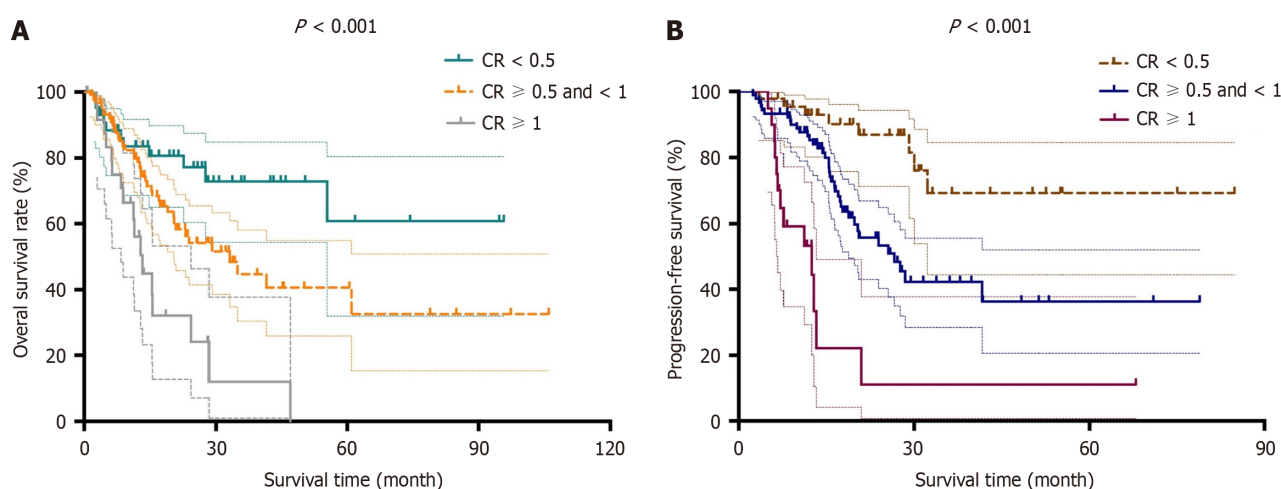


Figure 1 Kaplan-Meier curves for patients according to carbohydrate antigen 19-9. A and B: Kaplan-Meier curves for overall survival (A) and disease-free survival (B) are presented for post-neoadjuvant therapy (NAT) serum carbohydrate antigen 19-9 (CA19-9) level/pre-NAT serum CA19-9 level, which was defined as the carbohydrate antigen 19-9 ratio (CR).

PDAC is frequently considered as one of the worst cancers in terms of survival, with most patients dying < 2 years after diagnosis. In locally advanced pancreatic cancer, the 5-year survival rate is < 10%, making initial surgical treatment challenging[23-27]. CA19-9 has become a standard parameter in the diagnosis and monitoring of PDAC. High rates of recurrence represent significant hurdles to improving the outcome of patients with resectable disease. Elevations in CA19-9 have prognostic significance in early- and late-stage PDAC[28-30]. Studies in patients presenting with metastatic/unresectable disease showed that CA19-9 elevation is associated with worse survival, whereas CA19-9 response correlates with improved survival[31,32]. A CA19-9 decline in response to NAT can predict survival, margins, and pathologic outcome even in the absence of radiographic response[33-35]. Radiologic assessment remains a cornerstone in the decision-making process during the different stages of PDAC treatment. Currently, deep learning-based CT imaging-derived biomarkers enabled the objective and unbiased OS prediction for patients with resectable PDAC[36]. Although traditional NCCN resectability criteria have been shown to be unreliable in patients receiving NAT treatment, patients are followed up through imaging examinations during NAT to monitor disease progression[37-39]. On the other hand, since the tumor size at a single time point cannot reflect the changes observed during treatment, predicting resectability

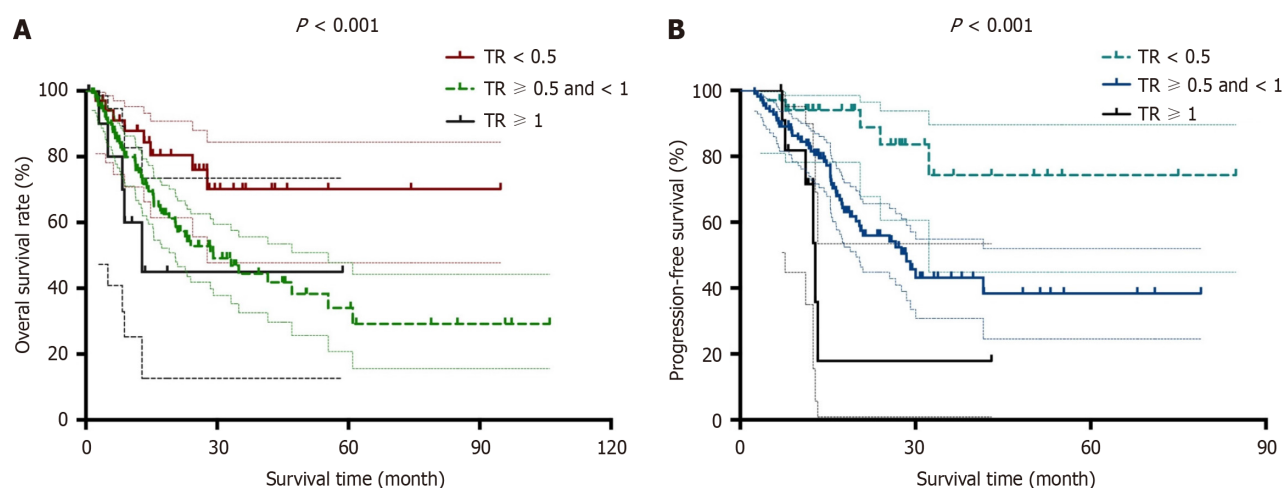


Figure 2 Kaplan-Meier curves for patients according to tumor size. A and B: Kaplan-Meier curves for overall survival (A) and disease-free survival (B) are presented for post-neoadjuvant therapy (NAT) tumor size/pre-NAT tumor size, which was defined as tumor size ratio (TR).

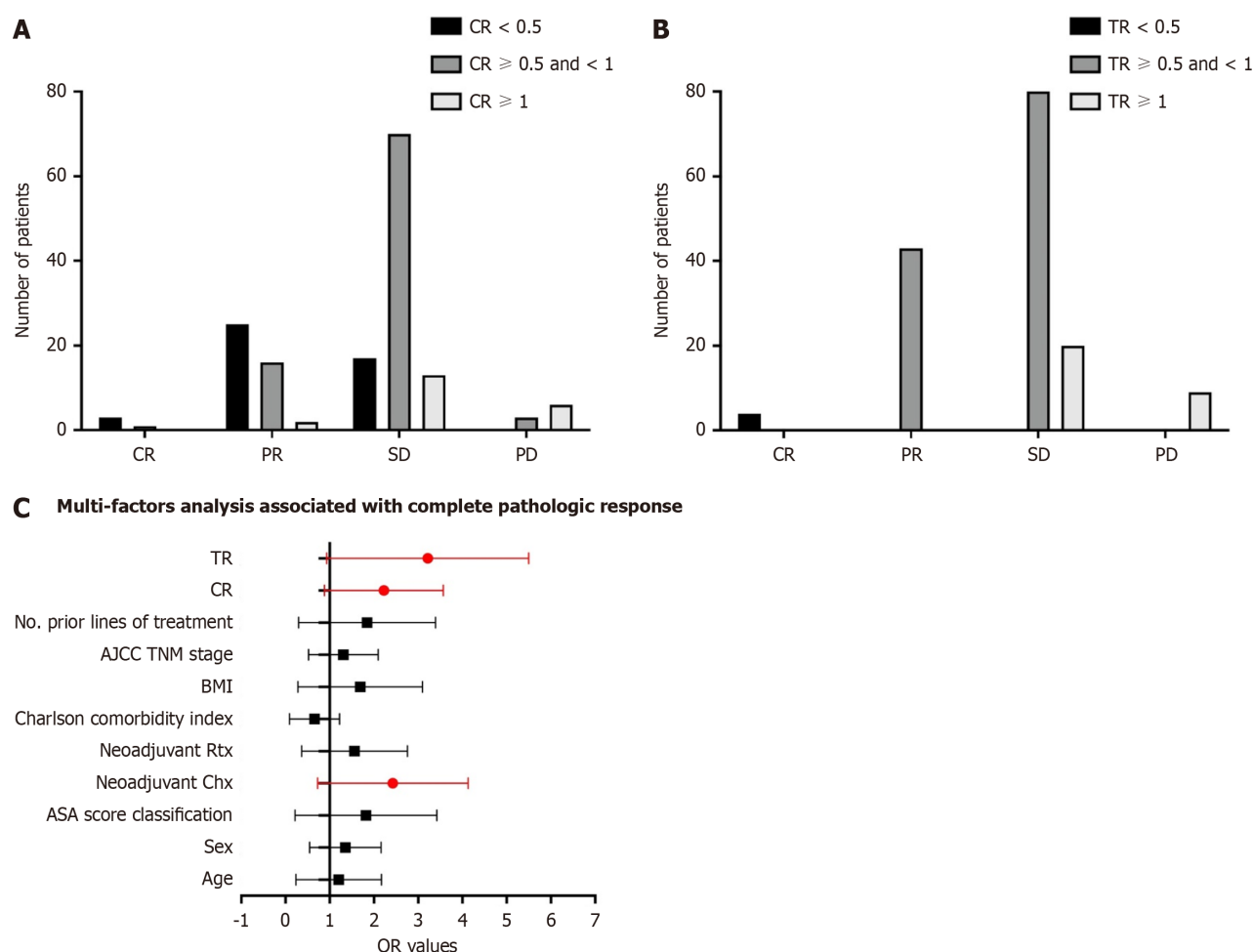


Figure 3 Treatment efficacy of all patients based on the groups divided by carbohydrate antigen 19-9 ratio and tumor size ratio. A: Treatment efficacy based on the groups divided by carbohydrate antigen 19-9 ratio (CR); B: Treatment efficacy based on the groups divided by tumor size ratio (TR); C: Multivariable analysis showed that CR and TR of neoadjuvant therapy were associated with increased odds of achieving a complete or near-complete pathologic response. AJCC: American Joint Committee on Cancer; BMI: Body mass index; PD: Progressive disease; SD: Stable disease.

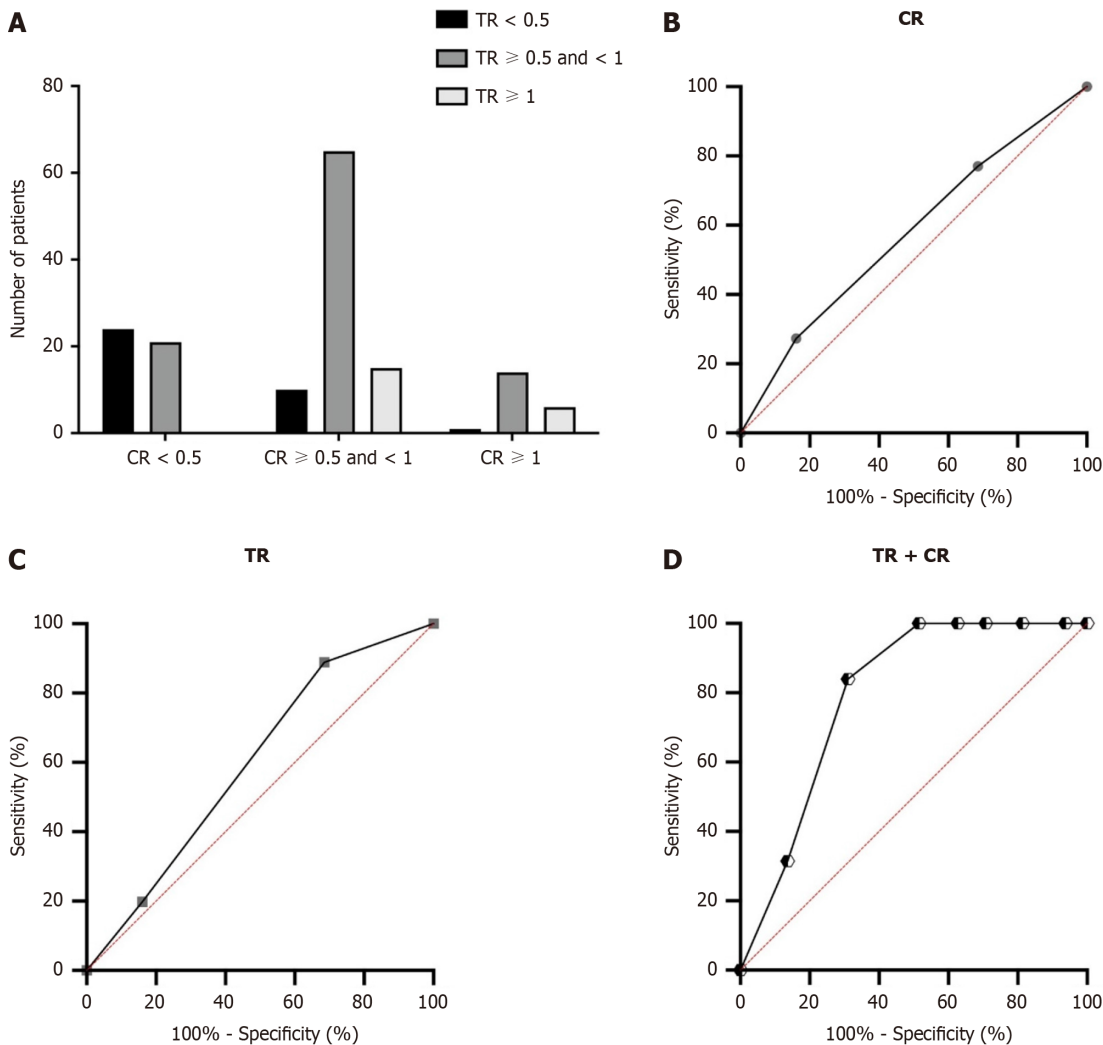


Figure 4 Prognostic values for both carbohydrate antigen 19-9 ratio and tumor size ratio. A-D: Interaction between carbohydrate antigen 19-9 ratio (CR) and tumor size ratio (TR; A) and area under the receiver operating characteristic curves performed to compare the predictive overall survival values of the variable of CR (B), TR (C) and the combined predictive value of CR and TR (D).

solely based on tumor size is inconsistent. Therefore, for patients undergoing NAT, the demand for new predictive strategies has not been met to improve prognostic assessment of these patients through radiological assessment using the combined effects of CA19-9 and tumor size.

In this study, based on the groups divided according to the CR and TR, we analyzed OS and DFS. Log-rank tests showed that both OS and DFS were significantly different among the groups divided according to the CR and TR ($P < 0.05$). In our study, the CR and TR were associated with increased odds of achieving a complete or near-complete pathologic response. More recently, serum CA19-9 has also been proposed as a marker of chemo-responsiveness. Moreover, multivariable analysis was performed to evaluate factors that demonstrated statistical significance during univariable analysis. The CR (HR: 1.721, 95%CI: 1.373-3.762; $P = 0.006$), and TR (HR: 1.435, 95%CI: 1.275-4.363; $P = 0.014$) were identified as independent factors associated with OS.

Several limitations exist in our study. Firstly, this study was retrospective, the sample size was relatively small, and it lacked a randomized control group, which could have introduced bias into the baseline histologic distribution. Secondly, the follow-up period in terms of survival data was limited at the time of data cutoff and longer-term follow-up is necessary to fully evaluate the impact of NAT on survival outcomes. Finally, while our biomarker analysis was exploratory, our study had a limited number of pre- and post-treatment samples, and a larger number of samples is needed to confirm our findings. These limitations underscore the need for future studies with larger patient cohorts and randomized control groups to validate our results and further evaluate the role of biomarkers in predicting response to NAT.

CONCLUSION

Our study demonstrated that post-NAT serum CA19-9 level/pre-NAT serum CA19-9 level and post-NAT tumor size/pre-NAT tumor size were independent factors associated with OS in patients with PDAC who received NAT and subsequent surgical resection.

ARTICLE HIGHLIGHTS

Research background

Pancreatic ductal adenocarcinoma (PDAC) is a relatively common cancer with increasing morbidity and mortality due to changes of social environment. Studies have demonstrated that neoadjuvant therapy (NAT) is associated with increased resectability, negative surgical margins, and increased survival among patients with more locally advanced disease. Carbohydrate antigen 19-9 (CA19-9) is a dialkylated Lewis blood group antigen and is the most widely investigated tumor marker in patients with PDAC. However, CA19-9 as a biomarker has known limitations: Routine usage of CA19-9 as a screening tool for PDAC in the general public is ineffective and results in a low positive predictive value due to the relatively low incidence of PDAC in the general population. It has been shown that changes in tumor size and serum CA19-9 during NAT can capture differences that are not identified by individual measurements at a single point in time.

Research motivation

Our study demonstrated that post-NAT serum CA19-9 level/pre-NAT serum CA19-9 level and post-NAT tumor size/pre-NAT tumor size were independent factors associated with overall survival (OS) in patients with PDAC who received NAT and subsequent surgical resection.

Research objectives

This study aimed to evaluate the significance of serum CA19-9 and tumor size changes pre-and post-NAT. The ratio of post-NAT serum CA19-9 level/pre-NAT serum CA19-9 level and the ratio of post-NAT tumor size/pre-NAT tumor size were used to identify the prognostic value of these factors in patients with PDAC. Moreover, we evaluated the combined prognostic value of these factors in predicting OS in patients with PDAC.

Research methods

The *t*-test was employed to evaluate the differences in microbiome species abundance between the groups. Two-sided *P* values were used, and the significance level was set at 0.05 for all analyses unless otherwise stated. SPSS software (version 26) and R software (version 4.1.2) were used for statistical analyses.

Research results

A total of 156 patients who completed NAT and subsequently underwent tumor resection were included in this study. The average age was 65.4 ± 10.6 years and 72 (46.2%) patients were female. Before survival analysis, we defined the post-NAT serum CA19-9 level/pre-NAT serum CA19-9 level as the CA19-9 ratio (CR). The patients were divided into three groups: $CR < 0.5$, $CR > 0.5$ and $CR < 1$ and $CR > 1$. With regard to tumor size measured by both computed tomography and magnetic resonance imaging, we defined the post-NAT tumor size/pre-NAT tumor size as the tumor size ratio (TR). The patients were then divided into three groups: $TR < 0.5$, $TR > 0.5$ and $TR < 1$ and $TR > 1$. Based on these groups divided according to CR and TR, we performed both OS and disease-free survival (DFS) analyses. Log-rank tests showed that both OS and DFS were significantly different among the groups according to CR and TR ($P < 0.05$). CR and TR after NAT were associated with increased odds of achieving a complete or near-complete pathologic response. Moreover, CR (HR: 1.721, 95%CI: 1.373-3.762; $P = 0.006$), and TR (HR: 1.435, 95%CI: 1.275-4.363; $P = 0.014$) were identified as independent factors associated with OS.

Research conclusions

Our study demonstrated that post-NAT serum CA19-9 level/pre-NAT serum CA19-9 level and post-NAT tumor size/pre-NAT tumor size were independent factors associated with OS in patients with PDAC who received NAT and subsequent surgical resection.

Research perspectives

Serum CA19-9 level and post-NAT tumor size/pre-NAT tumor size were independent factors associated with OS in patients with PDAC who received NAT and subsequent surgical resection.

FOOTNOTES

Co-first authors: Dong-Qin Xia and Shuang Yang.

Co-corresponding authors: Cai-Zhi Xiao and Wei Wang.

Author contributions: All authors contributed to the study's conception and design; Yang S, Li FF, Tian LY, Li YH, Xu HY, Xiao CZ performed data collection and analysis; Xia DQ, Zhou Y, and Wang W wrote the manuscript; Xia DQ, Zhou Y polished and revised the manuscript; Xiao CZ, Wang W performed supervision; Xiao CZ, Wang W performed project administration; All authors commented on previous versions of the manuscript and read and approved the final manuscript. Xia DQ and Yang S contributed equally to this work as co-first authors. Xiao CZ and Wang W contributed equally to this work as co-corresponding authors. The reasons for designating Xia DQ and Yang S as co-first authors, Xiao CZ and Wang W as co-corresponding authors are threefold. First, the research was performed as a collaborative effort, and the designation of co-first authors and co-corresponding authorship accurately reflects the distribution of responsibilities and burdens associated with the time and effort required to complete the study and the resultant paper. This also ensures

effective communication and management of post-submission matters, ultimately enhancing the paper's quality and reliability. Second, the overall research team encompassed authors with a variety of expertise and skills from different fields, and the designation of co-first authors and co-corresponding authors best reflects this diversity. This also promotes the most comprehensive and in-depth examination of the research topic, ultimately enriching readers' understanding by offering various expert perspectives. Third, Xia DQ and Yang S, Xiao CZ and Wang W contributed efforts of equal substance throughout the research process. The choice of these researchers as co-first authors and co-corresponding authors acknowledges and respects this equal contribution, while recognizing the spirit of teamwork and collaboration of this study. In summary, we believe that designating Xia DQ and Yang S as co-first authors, Xiao CZ and Wang W as co-corresponding authors are fitting for our manuscript as it accurately reflects our team's collaborative spirit, equal contributions, and diversity.

Supported by Natural Science Foundation of Chongqing, China, No. cstc2021jcyj-msxmX0501; and Chongqing Medical Scientific Research Project (Joint Project of Chongqing Health Commission and Science and Technology Bureau), No. 2022QNXM074.

Institutional review board statement: The study was approved by the Ethics Committee of the Institutional Review Board of the Chongqing University Cancer Hospital. Written informed consent was waived owing to the retrospective and deidentified nature of the study.

Informed consent statement: The written informed consent was waived owing to the retrospective and deidentified nature of this study.

Conflict-of-interest statement: The authors who have taken part in this study have nothing to disclose.

Data sharing statement: No additional data are available.

Open-Access: This article is an open-access article that was selected by an in-house editor and fully peer-reviewed by external reviewers. It is distributed in accordance with the Creative Commons Attribution NonCommercial (CC BY-NC 4.0) license, which permits others to distribute, remix, adapt, build upon this work non-commercially, and license their derivative works on different terms, provided the original work is properly cited and the use is non-commercial. See: <https://creativecommons.org/licenses/by-nc/4.0/>

Country/Territory of origin: China

ORCID number: Wei Wang 0009-0007-3941-535X.

S-Editor: Lin C

L-Editor: Filipodia

P-Editor: Zheng XM

REFERENCES

- 1 **McGuigan A**, Kelly P, Turkington RC, Jones C, Coleman HG, McCain RS. Pancreatic cancer: A review of clinical diagnosis, epidemiology, treatment and outcomes. *World J Gastroenterol* 2018; **24**: 4846-4861 [PMID: 30487695 DOI: 10.3748/wjg.v24.i43.4846]
- 2 **Mashayekhi V**, Mocellin O, Fens MHAM, Krijger GC, Brosens LAA, Oliveira S. Targeting of promising transmembrane proteins for diagnosis and treatment of pancreatic ductal adenocarcinoma. *Theranostics* 2021; **11**: 9022-9037 [PMID: 34522225 DOI: 10.7150/thno.60350]
- 3 **Versteijne E**, Suker M, Groothuis K, Akkermans-Vogelaar JM, Besselink MG, Bonsing BA, Buijsen J, Busch OR, Creemers GM, van Dam RM, Eskens FALM, Festen S, de Groot JWB, Groot Koerkamp B, de Hingh IH, Homs MYV, van Hooft JE, Kerver ED, Luelmo SAC, Neelis KJ, Nuytens J, Paardekooper GMRM, Patijn GA, van der Sangen MJC, de Vos-Geelen J, Wilmink JW, Zwiderman AH, Punt CJ, van Eijck CH, van Tienhoven G; Dutch Pancreatic Cancer Group. Preoperative Chemoradiotherapy Versus Immediate Surgery for Resectable and Borderline Resectable Pancreatic Cancer: Results of the Dutch Randomized Phase III PREOPANC Trial. *J Clin Oncol* 2020; **38**: 1763-1773 [PMID: 32105518 DOI: 10.1200/JCO.19.02274]
- 4 **Loveday BPT**, Lipton L, Thomson BN. Pancreatic cancer: An update on diagnosis and management. *Aust J Gen Pract* 2019; **48**: 826-831 [PMID: 31774983 DOI: 10.31128/AJGP-06-19-4957]
- 5 **Cloyd JM**, Tsung A, Hays J, Wills CE, Bridges JF. Neoadjuvant therapy for resectable pancreatic ductal adenocarcinoma: The need for patient-centered research. *World J Gastroenterol* 2020; **26**: 375-382 [PMID: 32063686 DOI: 10.3748/wjg.v26.i4.375]
- 6 **Springfeld C**, Ferrone CR, Katz MHG, Philip PA, Hong TS, Hackert T, Büchler MW, Neoptolemos J. Neoadjuvant therapy for pancreatic cancer. *Nat Rev Clin Oncol* 2023; **20**: 318-337 [PMID: 36932224 DOI: 10.1038/s41571-023-00746-1]
- 7 **Pezzilli R**, Fabbri D, Imbrogno A. Pancreatic ductal adenocarcinoma screening: new perspectives. *World J Gastroenterol* 2012; **18**: 4973-4977 [PMID: 23049204 DOI: 10.3748/wjg.v18.i36.4973]
- 8 **Scarà S**, Bottoni P, Scatena R. CA 19-9: Biochemical and Clinical Aspects. *Adv Exp Med Biol* 2015; **867**: 247-260 [PMID: 26530370 DOI: 10.1007/978-94-017-7215-0_15]
- 9 **Rieser CJ**, Zenati M, Hamad A, Al Abbas AI, Bahary N, Zureikat AH, Zeh HJ 3rd, Hogg ME. CA19-9 on Postoperative Surveillance in Pancreatic Ductal Adenocarcinoma: Predicting Recurrence and Changing Prognosis over Time. *Ann Surg Oncol* 2018; **25**: 3483-3491 [PMID: 29786131 DOI: 10.1245/s10434-018-6521-7]
- 10 **Xu P**, Wang X, Qian J, Li Z, Yao J, Xu A. The prognostic evaluation of CA19-9, D-dimer and TNFAIP3/A20 in patients with pancreatic ductal adenocarcinoma. *Medicine (Baltimore)* 2021; **100**: e24651 [PMID: 33578593 DOI: 10.1097/MD.00000000000024651]
- 11 **Kane LE**, Mellotte GS, Mylod E, O'Brien RM, O'Connell F, Buckley CE, Arlow J, Nguyen K, Mockler D, Meade AD, Ryan BM, Maher SG. Diagnostic Accuracy of Blood-based Biomarkers for Pancreatic Cancer: A Systematic Review and Meta-analysis. *Cancer Res Commun* 2022; **2**: 1229-1243 [PMID: 36969742 DOI: 10.1158/2767-9764.CRC-22-0190]
- 12 **Azizian A**, Rühlmann F, Krause T, Bernhardt M, Jo P, König A, Kleiß M, Leha A, Ghadimi M, Gaedcke J. CA19-9 for detecting recurrence of

- pancreatic cancer. *Sci Rep* 2020; **10**: 1332 [PMID: 31992753 DOI: 10.1038/s41598-020-57930-x]
- 13 **Itoh S**, Tsujita E, Fukuzawa K, Sugimachi K, Iguchi T, Ninomiya M, Maeda T, Kajiyama K, Adachi E, Uchiyama H, Utsunomiya T, Ikeda Y, Maekawa S, Toshima T, Harada N, Yoshizumi T, Mori M. Prognostic significance of preoperative PNI and CA19-9 for pancreatic ductal adenocarcinoma: A multi-institutional retrospective study. *Pancreatol* 2021; **21**: 1356-1363 [PMID: 34426076 DOI: 10.1016/j.pan.2021.08.003]
 - 14 **Imaoka H**, Shimizu Y, Senda Y, Natsume S, Mizuno N, Hara K, Hijioka S, Hieda N, Tajika M, Tanaka T, Ishihara M, Niwa Y, Yamao K. Post-adjuvant chemotherapy CA19-9 levels predict prognosis in patients with pancreatic ductal adenocarcinoma: A retrospective cohort study. *Pancreatol* 2016; **16**: 658-664 [PMID: 27178104 DOI: 10.1016/j.pan.2016.04.007]
 - 15 **Capello M**, Bantis LE, Scelo G, Zhao Y, Li P, Dhillon DS, Patel NJ, Kundnani DL, Wang H, Abbruzzese JL, Maitra A, Tempero MA, Brand R, Firpo MA, Mulvihill SJ, Katz MH, Brennan P, Feng Z, Taguchi A, Hanash SM. Sequential Validation of Blood-Based Protein Biomarker Candidates for Early-Stage Pancreatic Cancer. *J Natl Cancer Inst* 2017; **109** [PMID: 28376157 DOI: 10.1093/jnci/djw266]
 - 16 **Dittmar RL**, Liu S, Tai MC, Rajapakshe K, Huang Y, Longton G, DeCapite C, Hurd MW, Paris PL, Kirkwood KS, Coarfa C, Maitra A, Brand RE, Killary AM, Sen S. Plasma miRNA Biomarkers in Limited Volume Samples for Detection of Early-stage Pancreatic Cancer. *Cancer Prev Res (Phila)* 2021; **14**: 729-740 [PMID: 33893071 DOI: 10.1158/1940-6207.CAPR-20-0303]
 - 17 **Kinny-Köster B**, Habib JR, Wolfgang CL, He J, Javed AA. Favorable tumor biology in locally advanced pancreatic cancer-beyond CA19-9. *J Gastrointest Oncol* 2021; **12**: 2484-2494 [PMID: 34790409 DOI: 10.21037/jgo-20-426]
 - 18 **Aoki S**, Motoi F, Murakami Y, Sho M, Satoi S, Honda G, Uemura K, Okada KI, Matsumoto I, Nagai M, Yanagimoto H, Kurata M, Fukumoto T, Mizuma M, Yamaue H, Unno M; Multicenter Study Group of Pancreatobiliary Surgery (MSG-PBS). Decreased serum carbohydrate antigen 19-9 levels after neoadjuvant therapy predict a better prognosis for patients with pancreatic adenocarcinoma: a multicenter case-control study of 240 patients. *BMC Cancer* 2019; **19**: 252 [PMID: 30898101 DOI: 10.1186/s12885-019-5460-4]
 - 19 **Al Abbas AI**, Zenati M, Reiser CJ, Hamad A, Jung JP, Zureikat AH, Zeh HJ 3rd, Hogg ME. Serum CA19-9 Response to Neoadjuvant Therapy Predicts Tumor Size Reduction and Survival in Pancreatic Adenocarcinoma. *Ann Surg Oncol* 2020; **27**: 2007-2014 [PMID: 31898105 DOI: 10.1245/s10434-019-08156-3]
 - 20 **Torres C**, Grippo PJ. Pancreatic cancer subtypes: a roadmap for precision medicine. *Ann Med* 2018; **50**: 277-287 [PMID: 29537309 DOI: 10.1080/07853890.2018.1453168]
 - 21 **Wang L**, Xie D, Wei D. Pancreatic Acinar-to-Ductal Metaplasia and Pancreatic Cancer. *Methods Mol Biol* 2019; **1882**: 299-308 [PMID: 30378064 DOI: 10.1007/978-1-4939-8879-2_26]
 - 22 **Grossberg AJ**, Chu LC, Deig CR, Fishman EK, Hwang WL, Maitra A, Marks DL, Mehta A, Nabavizadeh N, Simeone DM, Weekes CD, Thomas CR Jr. Multidisciplinary standards of care and recent progress in pancreatic ductal adenocarcinoma. *CA Cancer J Clin* 2020; **70**: 375-403 [PMID: 32683683 DOI: 10.3322/caac.21626]
 - 23 **Hamad A**, Brown ZJ, Ejaz AM, Dillhoff M, Cloyd JM. Neoadjuvant therapy for pancreatic ductal adenocarcinoma: Opportunities for personalized cancer care. *World J Gastroenterol* 2021; **27**: 4383-4394 [PMID: 34366611 DOI: 10.3748/wjg.v27.i27.4383]
 - 24 **Truty MJ**, Kendrick ML, Nagorney DM, Smoot RL, Cleary SP, Graham RP, Goenka AH, Hallemeier CL, Haddock MG, Harmsen WS, Mahipal A, McWilliams RR, Halfdanarson TR, Grothey AF. Factors Predicting Response, Perioperative Outcomes, and Survival Following Total Neoadjuvant Therapy for Borderline/Locally Advanced Pancreatic Cancer. *Ann Surg* 2021; **273**: 341-349 [PMID: 30946090 DOI: 10.1097/SLA.0000000000003284]
 - 25 **Zhou Y**, Liao S, You J, Wu H. Conversion surgery for initially unresectable pancreatic ductal adenocarcinoma following induction therapy: a systematic review of the published literature. *Updates Surg* 2022; **74**: 43-53 [PMID: 34021484 DOI: 10.1007/s13304-021-01089-1]
 - 26 **Brown ZJ**, Heh V, Labiner HE, Brock GN, Ejaz A, Dillhoff M, Tsung A, Pawlik TM, Cloyd JM. Surgical resection rates after neoadjuvant therapy for localized pancreatic ductal adenocarcinoma: meta-analysis. *Br J Surg* 2022; **110**: 34-42 [PMID: 36346716 DOI: 10.1093/bjs/znac354]
 - 27 **Hamad A**, Crossnohere N, Ejaz A, Tsung A, Pawlik TM, Sarna A, Santry H, Wills C, Cloyd JM. Patient Preferences for Neoadjuvant Therapy in Pancreatic Ductal Adenocarcinoma. *Pancreas* 2022; **51**: 657-662 [PMID: 36099500 DOI: 10.1097/MPA.0000000000002083]
 - 28 **Balaban DV**, Marin FS, Manucu G, Zoican A, Ciochina M, Mina V, Patoni C, Vladut C, Bucurica S, Costache RS, Ionita-Radu F, Jinga M. Clinical characteristics and outcomes in carbohydrate antigen 19-9 negative pancreatic cancer. *World J Clin Oncol* 2022; **13**: 630-640 [PMID: 36157158 DOI: 10.5306/wjco.v13.i7.630]
 - 29 **Moon D**, Kim H, Han Y, Byun Y, Choi Y, Kang J, Kwon W, Jang JY. Preoperative carbohydrate antigen 19-9 and standard uptake value of positron emission tomography-computed tomography as prognostic markers in patients with pancreatic ductal adenocarcinoma. *J Hepatobiliary Pancreat Sci* 2022; **29**: 1133-1141 [PMID: 33063453 DOI: 10.1002/jhpb.845]
 - 30 **Chiu YF**, Liu TW, Shan YS, Chen JS, Li CP, Ho CL, Hsieh RK, Hwang TL, Chen LT, Ch'ang HJ; Taiwan Cooperative Oncology Group pancreatic cancer study group. Carbohydrate Antigen 19-9 Response to Initial Adjuvant Chemotherapy Predicts Survival and Failure Pattern of Resected Pancreatic Adenocarcinoma but Not Which Patients Are Suited for Additional Adjuvant Chemoradiation Therapy: From a Prospective Randomized Study. *Int J Radiat Oncol Biol Phys* 2023; **117**: 74-86 [PMID: 37055279 DOI: 10.1016/j.ijrobp.2023.02.061]
 - 31 **Bergquist JR**, Puig CA, Shubert CR, Groeschl RT, Habermann EB, Kendrick ML, Nagorney DM, Smoot RL, Farnell MB, Truty MJ. Carbohydrate Antigen 19-9 Elevation in Anatomically Resectable, Early Stage Pancreatic Cancer Is Independently Associated with Decreased Overall Survival and an Indication for Neoadjuvant Therapy: A National Cancer Database Study. *J Am Coll Surg* 2016; **223**: 52-65 [PMID: 27049786 DOI: 10.1016/j.jamcollsurg.2016.02.009]
 - 32 **van Manen L**, Groen JV, Putter H, Pichler M, Vahrmeijer AL, Bonsing BA, Mieog JSD. Stage-Specific Value of Carbohydrate Antigen 19-9 and Carcinoembryonic Antigen Serum Levels on Survival and Recurrence in Pancreatic Cancer: A Single Center Study and Meta-Analysis. *Cancers (Basel)* 2020; **12** [PMID: 33066393 DOI: 10.3390/cancers12102970]
 - 33 **Chung KH**, Ryu JK, Lee BS, Jang DK, Lee SH, Kim YT. Early decrement of serum carbohydrate antigen 19-9 predicts favorable outcome in advanced pancreatic cancer. *J Gastroenterol Hepatol* 2016; **31**: 506-512 [PMID: 26250642 DOI: 10.1111/jgh.13075]
 - 34 **Gu X**, Zhou R, Li C, Liu R, Zhao Z, Gao Y, Xu Y. Preoperative maximum standardized uptake value and carbohydrate antigen 19-9 were independent predictors of pathological stages and overall survival in Chinese patients with pancreatic duct adenocarcinoma. *BMC Cancer* 2019; **19**: 456 [PMID: 31092213 DOI: 10.1186/s12885-019-5691-4]
 - 35 **Heger U**, Sun H, Hinz U, Klaiber U, Tanaka M, Liu B, Sachsenmaier M, Springfield C, Michalski CW, Büchler MW, Hackert T. Induction chemotherapy in pancreatic cancer: CA 19-9 may predict resectability and survival. *HPB (Oxford)* 2020; **22**: 224-232 [PMID: 31375338 DOI: 10.1016/j.hpb.2019.06.012]
 - 36 **Yao J**, Cao K, Hou Y, Zhou J, Xia Y, Nogues I, Song Q, Jiang H, Ye X, Lu J, Jin G, Lu H, Xie C, Zhang R, Xiao J, Liu Z, Gao F, Qi Y, Li X,

- Zheng Y, Lu L, Shi Y, Zhang L. Deep Learning for Fully Automated Prediction of Overall Survival in Patients Undergoing Resection for Pancreatic Cancer: A Retrospective Multicenter Study. *Ann Surg* 2023; **278**: e68-e79 [PMID: [35781511](#) DOI: [10.1097/SLA.0000000000005465](#)]
- 37 **Groot VP**, Rezaee N, Wu W, Cameron JL, Fishman EK, Hruban RH, Weiss MJ, Zheng L, Wolfgang CL, He J. Patterns, Timing, and Predictors of Recurrence Following Pancreatectomy for Pancreatic Ductal Adenocarcinoma. *Ann Surg* 2018; **267**: 936-945 [PMID: [28338509](#) DOI: [10.1097/SLA.0000000000002234](#)]
- 38 **Abdelrahman AM**, Goenka AH, Alva-Ruiz R, Yonkus JA, Leiting JL, Graham RP, Merrell KW, Thiels CA, Hallemeier CL, Warner SG, Haddock MG, Grotz TE, Tran NH, Smoot RL, Ma WW, Cleary SP, McWilliams RR, Nagorney DM, Halfdanarson TR, Kendrick ML, Truty MJ. FDG-PET Predicts Neoadjuvant Therapy Response and Survival in Borderline Resectable/Locally Advanced Pancreatic Adenocarcinoma. *J Natl Compr Canc Netw* 2022; **20**: 1023-1032.e3 [PMID: [36075389](#) DOI: [10.6004/jnccn.2022.7041](#)]
- 39 **Soloff EV**, Al-Hawary MM, Dessler TS, Fishman EK, Minter RM, Zins M. Imaging Assessment of Pancreatic Cancer Resectability After Neoadjuvant Therapy: AJR Expert Panel Narrative Review. *AJR Am J Roentgenol* 2022; **218**: 570-581 [PMID: [34851713](#) DOI: [10.2214/AJR.21.26931](#)]



Published by **Baishideng Publishing Group Inc**
7041 Koll Center Parkway, Suite 160, Pleasanton, CA 94566, USA

Telephone: +1-925-3991568

E-mail: office@baishideng.com

Help Desk: <https://www.f6publishing.com/helpdesk>

<https://www.wjgnet.com>

