

World Journal of *Gastrointestinal Oncology*

World J Gastrointest Oncol 2024 March 15; 16(3): 571-1090



EDITORIAL

- 571 Synchronous gastric and colon cancers: Important to consider hereditary syndromes and chronic inflammatory disease associations
Shenoy S
- 577 Neutrophil-to-lymphocyte ratio and platelet-to-lymphocyte ratio: Markers predicting immune-checkpoint inhibitor efficacy and immune-related adverse events
Jiang QY, Xue RY
- 583 Early-onset gastrointestinal cancer: An epidemiological reality with great significance and implications
Triantafyllidis JK, Georgiou K, Konstadoulakis MM, Papalois AE

REVIEW

- 598 Management of obstructed colorectal carcinoma in an emergency setting: An update
Pavlidis ET, Galanis IN, Pavlidis TE
- 614 Unraveling the enigma: A comprehensive review of solid pseudopapillary tumor of the pancreas
Xu YC, Fu DL, Yang F

MINIREVIEWS

- 630 Roles and application of exosomes in the development, diagnosis and treatment of gastric cancer
Guan XL, Guan XY, Zhang ZY
- 643 Prognostic and predictive role of immune microenvironment in colorectal cancer
Kuznetsova O, Fedyanin M, Zavalishina L, Moskvina L, Kuznetsova O, Lebedeva A, Tryakin A, Kireeva G, Borshchev G, Tjulandin S, Ignatova E
- 653 Pylorus-preserving gastrectomy for early gastric cancer
Sun KK, Wu YY

ORIGINAL ARTICLE

Case Control Study

- 659 N-glycan biosignatures as a potential diagnostic biomarker for early-stage pancreatic cancer
Wen YR, Lin XW, Zhou YW, Xu L, Zhang JL, Chen CY, He J
- 670 Expression and significance of pigment epithelium-derived factor and vascular endothelial growth factor in colorectal adenoma and cancer
Yang Y, Wen W, Chen FL, Zhang YJ, Liu XC, Yang XY, Hu SS, Jiang Y, Yuan J

- 687 Impact of Alcian blue and periodic acid Schiff expression on the prognosis of gastric signet ring cell carcinoma

Lin J, Chen ZF, Guo GD, Chen X

Retrospective Cohort Study

- 699 Clinical profile and outcomes of hepatocellular carcinoma in primary Budd-Chiari syndrome

Agarwal A, Biswas S, Swaroop S, Aggarwal A, Agarwal A, Jain G, Elhence A, Vaidya A, Gupte A, Mohanka R, Kumar R, Mishra AK, Gamanagatti S, Paul SB, Acharya SK, Shukla A, Shalimar

- 716 Chinese herbal medicine decreases incidence of hepatocellular carcinoma in diabetes mellitus patients with regular insulin management

Lai HC, Cheng JC, Yip HT, Jeng LB, Huang ST

- 732 Combining systemic inflammatory response index and albumin fibrinogen ratio to predict early serious complications and prognosis after resectable gastric cancer

Ren JY, Wang D, Zhu LH, Liu S, Yu M, Cai H

- 750 Mucosa color and size may indicate malignant transformation of chicken skin mucosa-positive colorectal neoplastic polyps

Zhang YJ, Yuan MX, Wen W, Li F, Jian Y, Zhang CM, Yang Y, Chen FL

- 761 Epidemiology, therapy and outcome of hepatocellular carcinoma between 2010 and 2019 in Piedmont, Italy

Bracco C, Gallarate M, Badinella Martini M, Magnino C, D'Agnano S, Canta R, Racca G, Melchio R, Serraino C, Polla Mattiot V, Gollè G, Fenoglio L

- 773 Study on sex differences and potential clinical value of three-dimensional computerized tomography pelvimetry in rectal cancer patients

Zhou XC, Ke FY, Dhamija G, Chen H, Wang Q

Retrospective Study

- 787 High patatin like phospholipase domain containing 8 expression as a biomarker for poor prognosis of colorectal cancer

Zhou PY, Zhu DX, Chen YJ, Feng QY, Mao YH, Zhuang AB, Xu JM

- 798 Combining prognostic value of serum carbohydrate antigen 19-9 and tumor size reduction ratio in pancreatic ductal adenocarcinoma

Xia DQ, Zhou Y, Yang S, Li FF, Tian LY, Li YH, Xu HY, Xiao CZ, Wang W

- 810 Influence of transcatheter arterial embolization on symptom distress and fatigue in liver cancer patients

Yang XM, Yang XY, Wang XY, Gu YX

- 819 T2-weighted imaging-based radiomic-clinical machine learning model for predicting the differentiation of colorectal adenocarcinoma

Zheng HD, Huang QY, Huang QM, Ke XT, Ye K, Lin S, Xu JH

- 833 Predictive value of positive lymph node ratio in patients with locally advanced gastric remnant cancer

Zhuo M, Tian L, Han T, Liu TF, Lin XL, Xiao XY

- 844 Risk of cardiovascular death in patients with hepatocellular carcinoma based on the Fine-Gray model
Zhang YL, Liu ZR, Liu Z, Bai Y, Chi H, Chen DP, Zhang YM, Cui ZL
- 857 Preoperatively predicting vessels encapsulating tumor clusters in hepatocellular carcinoma: Machine learning model based on contrast-enhanced computed tomography
Zhang C, Zhong H, Zhao F, Ma ZY, Dai ZJ, Pang GD
- 875 Comparison of mismatch repair and immune checkpoint protein profile with histopathological parameters in pancreatic, peripapillary/ampullary, and choledochal adenocarcinomas
Aydin AH, Turhan N
- 883 Assessment of programmed death-ligand 1 expression in primary tumors and paired lymph node metastases of gastric adenocarcinoma
Coimbra BC, Pereira MA, Cardili L, Alves VAF, de Mello ES, Ribeiro U Jr, Ramos MFKP

Observational Study

- 894 Identification of breath volatile organic compounds to distinguish pancreatic adenocarcinoma, pancreatic cystic neoplasm, and patients without pancreatic lesions
Tiankanon K, Pungpipattrakul N, Sukaram T, Chaiteerakij R, Rerknimitr R
- 907 Clinical features and prognostic factors of duodenal neuroendocrine tumours: A comparative study of ampullary and nonampullary regions
Fang S, Shi YP, Wang L, Han S, Shi YQ

Clinical and Translational Research

- 919 Construction of an immune-related gene signature for overall survival prediction and immune infiltration in gastric cancer
Ma XT, Liu X, Ou K, Yang L
- 933 Clinical efficacy and pathological outcomes of transanal endoscopic intersphincteric resection for low rectal cancer
Xu ZW, Zhu JT, Bai HY, Yu XJ, Hong QQ, You J
- 945 Identification of a novel inflammatory-related gene signature to evaluate the prognosis of gastric cancer patients
Hu JL, Huang MJ, Halina H, Qiao K, Wang ZY, Lu JJ, Yin CL, Gao F

Basic Study

- 968 Verteporfin fluorescence in antineoplastic-treated pancreatic cancer cells found concentrated in mitochondria
Zhang YQ, Liu QH, Liu L, Guo PY, Wang RZ, Ba ZC
- 979 Effects of *Helicobacter pylori* and Moluodan on the Wnt/ β -catenin signaling pathway in mice with precancerous gastric cancer lesions
Wang YM, Luo ZW, Shu YL, Zhou X, Wang LQ, Liang CH, Wu CQ, Li CP

- 991** Mitochondrial carrier homolog 2 increases malignant phenotype of human gastric epithelial cells and promotes proliferation, invasion, and migration of gastric cancer cells
Zhang JW, Huang LY, Li YN, Tian Y, Yu J, Wang XF
- 1006** Ubiquitin-specific protease 21 promotes tumorigenicity and stemness of colorectal cancer by deubiquitinating and stabilizing ZEB1
Lin JJ, Lu YC
- 1019** Long non-coding RNA GATA6-AS1 is mediated by N6-methyladenosine methylation and inhibits the proliferation and metastasis of gastric cancer
Shen JJ, Li MC, Tian SQ, Chen WM
- 1029** CALD1 facilitates epithelial-mesenchymal transition progression in gastric cancer cells by modulating the PI3K-Akt pathway
Ma WQ, Miao MC, Ding PA, Tan BB, Liu WB, Guo S, Er LM, Zhang ZD, Zhao Q

META-ANALYSIS

- 1046** Efficacy and safety of perioperative therapy for locally resectable gastric cancer: A network meta-analysis of randomized clinical trials
Kuang ZY, Sun QH, Cao LC, Ma XY, Wang JX, Liu KX, Li J

SCIENTOMETRICS

- 1059** Insights into the history and tendency of glycosylation and digestive system tumor: A bibliometric-based visual analysis
Jiang J, Luo Z, Zhang RC, Wang YL, Zhang J, Duan MY, Qiu ZJ, Huang C

CASE REPORT

- 1076** Managing end-stage carcinoid heart disease: A case report and literature review
Bulj N, Tomasic V, Cigrovski Berkovic M
- 1084** Hemorrhagic cystitis in gastric cancer after nanoparticle albumin-bound paclitaxel: A case report
Zhang XJ, Lou J

ABOUT COVER

Peer Review of *World Journal of Gastrointestinal Oncology*, Noha Elkady, MD, Assistant Professor, Department of Pathology, Faculty of Medicine Menoufia University, Shibin Elkom 32511, Egypt. drnohaelkady@gmail.com

AIMS AND SCOPE

The primary aim of *World Journal of Gastrointestinal Oncology* (WJGO, *World J Gastrointest Oncol*) is to provide scholars and readers from various fields of gastrointestinal oncology with a platform to publish high-quality basic and clinical research articles and communicate their research findings online.

WJGO mainly publishes articles reporting research results and findings obtained in the field of gastrointestinal oncology and covering a wide range of topics including liver cell adenoma, gastric neoplasms, appendiceal neoplasms, biliary tract neoplasms, hepatocellular carcinoma, pancreatic carcinoma, cecal neoplasms, colonic neoplasms, colorectal neoplasms, duodenal neoplasms, esophageal neoplasms, gallbladder neoplasms, *etc.*

INDEXING/ABSTRACTING

The WJGO is now abstracted and indexed in PubMed, PubMed Central, Science Citation Index Expanded (SCIE, also known as SciSearch®), Journal Citation Reports/Science Edition, Scopus, Reference Citation Analysis, China Science and Technology Journal Database, and Superstar Journals Database. The 2023 edition of Journal Citation Reports® cites the 2022 impact factor (IF) for WJGO as 3.0; IF without journal self cites: 2.9; 5-year IF: 3.0; Journal Citation Indicator: 0.49; Ranking: 157 among 241 journals in oncology; Quartile category: Q3; Ranking: 58 among 93 journals in gastroenterology and hepatology; and Quartile category: Q3. The WJGO's CiteScore for 2022 is 4.1 and Scopus CiteScore rank 2022: Gastroenterology is 71/149; Oncology is 197/366.

RESPONSIBLE EDITORS FOR THIS ISSUE

Production Editor: Xiang-Di Zhang; Production Department Director: Xiang Li; Editorial Office Director: Jia-Ru Fan.

NAME OF JOURNAL

World Journal of Gastrointestinal Oncology

ISSN

ISSN 1948-5204 (online)

LAUNCH DATE

February 15, 2009

FREQUENCY

Monthly

EDITORS-IN-CHIEF

Monjur Ahmed, Florin Burada

EDITORIAL BOARD MEMBERS

<https://www.wjgnet.com/1948-5204/editorialboard.htm>

PUBLICATION DATE

March 15, 2024

COPYRIGHT

© 2024 Baishideng Publishing Group Inc

INSTRUCTIONS TO AUTHORS

<https://www.wjgnet.com/bpg/gerinfo/204>

GUIDELINES FOR ETHICS DOCUMENTS

<https://www.wjgnet.com/bpg/GerInfo/287>

GUIDELINES FOR NON-NATIVE SPEAKERS OF ENGLISH

<https://www.wjgnet.com/bpg/gerinfo/240>

PUBLICATION ETHICS

<https://www.wjgnet.com/bpg/GerInfo/288>

PUBLICATION MISCONDUCT

<https://www.wjgnet.com/bpg/gerinfo/208>

ARTICLE PROCESSING CHARGE

<https://www.wjgnet.com/bpg/gerinfo/242>

STEPS FOR SUBMITTING MANUSCRIPTS

<https://www.wjgnet.com/bpg/GerInfo/239>

ONLINE SUBMISSION

<https://www.f6publishing.com>



Basic Study

Mitochondrial carrier homolog 2 increases malignant phenotype of human gastric epithelial cells and promotes proliferation, invasion, and migration of gastric cancer cells

Jing-Wen Zhang, Ling-Yan Huang, Ya-Ning Li, Ying Tian, Jia Yu, Xiao-Fei Wang

Specialty type: Oncology

Provenance and peer review:

Unsolicited article; Externally peer reviewed.

Peer-review model: Single blind

Peer-review report's scientific quality classification

Grade A (Excellent): 0

Grade B (Very good): B

Grade C (Good): 0

Grade D (Fair): 0

Grade E (Poor): 0

P-Reviewer: Exbrayat JM, France

Received: October 20, 2023

Peer-review started: October 20, 2023

First decision: December 5, 2023

Revised: December 21, 2023

Accepted: January 19, 2024

Article in press: January 19, 2024

Published online: March 15, 2024



Jing-Wen Zhang, Ya-Ning Li, Jia Yu, School of Basic Medical Science, NHC Key Laboratory of Metabolic Cardiovascular Diseases Research, Ningxia Medical University, Yinchuan 750004, Ningxia Hui Autonomous Region, China

Ling-Yan Huang, Department of Pathology, General Hospital of Ningxia Medical University, Yinchuan 750004, Ningxia Hui Autonomous Region, China

Ying Tian, School of Clinical Medicine, Ningxia Medical University, Yinchuan 750004, Ningxia Hui Autonomous Region, China

Xiao-Fei Wang, Department of Pathology, North China University of Science and Technology Affiliated Hospital, Tangshan 063000, Hebei Province, China

Corresponding author: Jing-Wen Zhang, MD, Associate Professor, School of Basic Medical Science, NHC Key Laboratory of Metabolic Cardiovascular Diseases Research, Ningxia Medical University, No. 1160 Shengli Street, Xingqing District, Yinchuan 750004, Ningxia Hui Autonomous Region, China. ztjwjwzt@163.com

Abstract

BACKGROUND

The precise role of mitochondrial carrier homolog 2 (MTCH2) in promoting malignancy in gastric mucosal cells and its involvement in gastric cancer cell metastasis have not been fully elucidated.

AIM

To determine the role of MTCH2 in gastric cancer.

METHODS

We collected 65 samples of poorly differentiated gastric cancer tissue and adjacent tissues, constructed MTCH2-overexpressing and MTCH2-knockdown cell models, and evaluated the proliferation, migration, and invasion of human gastric epithelial cells (GES-1) and human gastric cancer cells (AGS) cells. The mitochondrial membrane potential (MMP), mitochondrial permeability transformation pore (mPTP) and ATP fluorescence probe were used to detect mitochondrial function. Mitochondrial function and ATP synthase protein levels were detected via Western blotting.

RESULTS

The expression of MTCH2 and ATP2A2 in gastric cancer tissues was significantly greater than that in adjacent tissues. Overexpression of MTCH2 promoted colony formation, invasion, migration, MMP expression and ATP production in GES-1 and AGS cells while upregulating ATP2A2 expression and inhibiting cell apoptosis; knockdown of MTCH2 had the opposite effect, promoting overactivation of the mPTP and promoting apoptosis.

CONCLUSION

MTCH2 can increase the malignant phenotype of GES-1 cells and promote the proliferation, invasion, and migration of gastric cancer cells by regulating mitochondrial function, providing a basis for targeted therapy for gastric cancer cells.

Key Words: Gastric cancer; Mitochondrial carrier homolog 2; ATP synthase; ATP2A2; Mitochondrial permeability transformation pore

©The Author(s) 2024. Published by Baishideng Publishing Group Inc. All rights reserved.

Core Tip: Mitochondrial carrier homolog 2 (MTCH2) increases malignant phenotype of human gastric epithelial cells. MTCH2 promotes progression of gastric cancer cells. Mitochondrial permeability transformation pore opening and ATP synthase play important roles in gastric cancer.

Citation: Zhang JW, Huang LY, Li YN, Tian Y, Yu J, Wang XF. Mitochondrial carrier homolog 2 increases malignant phenotype of human gastric epithelial cells and promotes proliferation, invasion, and migration of gastric cancer cells. *World J Gastrointest Oncol* 2024; 16(3): 991-1005

URL: <https://www.wjgnet.com/1948-5204/full/v16/i3/991.htm>

DOI: <https://dx.doi.org/10.4251/wjgo.v16.i3.991>

INTRODUCTION

Changes in mitochondrial bioenergetics, biosynthesis and signal transduction are necessary conditions for tumorigenesis [1]. Mitochondria are regarded as pivotal organelles responsible for ATP generation and are crucial for maintaining cellular energy metabolism. Mitochondrial outer and inner membrane-related proteins are involved in tumor biological behavior by regulating mtDNA replication and energy metabolism [2]. The role of mitochondrial outer membrane proteins in mitochondrial energy metabolism is particularly important, as they play a key role in the communication between mitochondria and other organelles [3].

Mitochondrial carrier homolog 2 (MTCH2), a member of the solute carrier 25 (SLC25) family, is an insertion enzyme of α -helical mitochondrial outer membrane proteins, and its main function is to transport metabolites to the mitochondrial matrix. It is also a membrane channel for proteins to enter mitochondria, and the loss of MTCH2 is associated with mitochondrial fusion, energy metabolism, lipid homeostasis, and apoptosis [4]. MTCH2 was found to be an important gene driving the progression of colon cancer through whole exome sequencing analysis of human colorectal cancer tissues [5]. In a metabolomics analysis of breast cancer, by exa mining the changes in proteomic metabolism during epithelial-mesenchymal transition (EMT), a relationship between MTCH2 expression and the occurrence of EMT was found [6]. A study involving whole-transcriptome RNA sequencing of myofibroma samples indicated that the fusion transcripts of MTCH2-for min binding protein promoted the malignant progression of myofibroma [7].

MTCH2 plays a crucial role not only in cellular productivity and energy consumption processes but also in the regulation of mitochondrial permeability transformation pore (mPTP) opening [8]. Under normal circumstances, the mPTP is typically maintained in a closed state. However, when stimulated by factors such as oxidation, excessive reactive oxygen species (ROS), or increased Ca^{2+} levels, stress can be triggered or promoted, allowing for free exchange of proteins [9]. According to noncancer studies, abnormal opening of the mPTP, which results in impaired mitochondrial function, is thought to be the central event in inflammation [10]. According to cancer research, abnormal opening of the mPTP is thought to mediate cancer cell death by regulating apoptotic signaling [11]. Notably, abnormal opening of the mPTP promotes the enhancement of mitochondrial permeability, resulting in the loss of mitochondrial membrane potential (MMP) and a reduction in mitochondrial ATP, which induces the activation of apoptosis and enhances the therapeutic efficacy of chemotherapeutic drugs [12]. Studies have shown that ADT1, ATP5H, ATPA, and ATPB are the most abundant mPTP proteins [13]. ATP2A2 is a hub in protein-protein interaction networks [14]. During the process of EMT in breast cancer cells, ATP2A2 and MTCH2 have been found to be involved in breast cancer progression [6].

In this study, we detected differences in the expression of MTCH2 between gastric cancer tissues and adjacent tissues and found that MTCH2 was overexpressed in gastric cancer tissues, suggesting that MTCH2 may be a new target for the diagnosis and treatment of gastric cancer. Using *in vitro* experiments, we proposed that MTCH2 can affect the proliferation and metastasis of human gastric epithelial cells (GES-1) and human gastric cancer cells (AGS) cells by regulating mPTP opening, the MMP and ATP production, providing a reference for cancer therapy involving the targeting of

mitochondria.

MATERIALS AND METHODS

Specimen of human pathological tissue

Tissue specimens of gastric cancer and paracancer tissues of 65 patients with low differentiated gastric cancer were obtained from North China University of Technology Affiliated Hospital. Sixty-five patients in this group had no previous history of radiotherapy and chemotherapy.

Cell culture

GES-1 and AGS were purchased from National Collection of Authenticated Cell Cultural, China (<https://www.cellbank.org.cn/>). GES-1 cells were maintained in Dulbecco's Modified Eagle Medium (DMEM) with 4.5 g/L D-glucose containing 10% fetal bovine serum (FBS) and 1% penicillin/streptomycin (p/s). AGS cells were maintained in F-12K Medium containing 10% FBS and 1% p/s. All cell lines were cultured in incubator at 37 °C and 5% CO₂.

Transfection

Clone vector (pcDNA3.1) of MTCH2 overexpression (MTCH2-OE, ZB02427, cloning site: NheI/BamHI) were purchased from company Shanghai Sangon (SangonBiotech, China, <https://www.sangon.com/>). Three siRNA sequences against MTCH2 and/or ATP2A2 (MTCH2-siRNA1, MTCH2-siRNA2, and ATP2A2 siRNA) and one negative control (siRNA-NC) were designed. The sequences were as follows: MTCH2-siRNA1 (5'-3'): Sense: UCCUCCAACAAUAGGACGAAATT; antisense: UUUCGUCCAUUUGUUGGAGGATT. MTCH2-siRNA2 (5'-3'): Sense: GCCUACCUCGUCAAUACCUAUUTT; antisense: AUAGGUAAUUGACGAGGUAGGCTT. ATP2A2 siRNA (5'-3'): Sense: CCUGGUGAUUUGUAGAAAUUTT; antisense: AAUUUCUACAAUAUCACCAGGTT. siRNA-NC (5'-3'): Sense: UUCUCCGAACGUGUCACGUTT; antisense: ACGUGACACGUUCGAGAATT. After 24 h of cultivation, cells were transfected with MTCH2-OE, MTCH2-siRNA1, MTCH2-siRNA2, ATP2A2 siRNA, and siRNA-NC using Lipo8000™ transfection reagent (C0533-0.5 mL, Beyotime, China). After 24 h of transfection, cells were collected for Western blotting.

Transwell assay

Following 24 h culture in DMEM or F-12K without serum, cells were collected and diluted to cell concentration of 1×10^5 /mL using serum-free medium. Cell suspension (200 µL) was seeded to the upper chamber and 600 µL DMEM or F-12K medium supplemented with 10% FBS was added to the lower chamber. After incubation for 48 h, serum-free medium was removed from the upper chamber. Cells on the undersurface of the upper chamber were fixed with 4% paraformaldehyde and stained with 0.1% crystal violet. Cells remaining on the upper surface of the upper chamber were wiped with cotton swabs. Five fields were randomly selected under the microscope to count the number of cells that migrated.

Wound-healing scratch assay

Cells were seeded in a 6-well plate and cultured for 24 h in DMEM or F-12K medium supplemented with 10% FBS. Two parallel scratches were made within each well using 200 µL pipette tips. Cells were continued to be cultured in the corresponding medium for 24 h and photographed under the microscope at 0 h and 24 h after the scratches were drawn.

ATP assay

The cells were seeded into a 6-well plate and cultivated for 24 h. After another 24 h of transfection, 25 µL pCMV-AT1.03 plasmid (D2604, Beyotime, China), 4 µL Lipo8000™ transfection reagent and 125 µL serum-free medium were added into each well for mitochondrial ATP fluorescence probe transfection. After 24 h transfection, a fluorescence microscope was used to observe fluorescence intensity.

Colony formation assay

Cells were seeded into Petri dishes at a density of 200 cells/ well. After the intervention, cells were cultivated at 37 °C, 5% CO₂ for 2-3 wk until visible colonies formed. During this time, the cell medium was changed every 2 d. Cells were washed with PBS for twice followed by fixing with 4% paraformaldehyde for 15 min. Cell colonies were then stained with 0.1% crystal violet for 20 min. The number of colonies were counted for analysis.

Immunohistochemistry

After dewaxing, rehydration and antigen retrieval, paraffin-embedded tissue sections were incubated with 3% hydrogen peroxide for 15 min and then with 10% goat serum for 30 min both in a 37 °C water bath. Anti-MTCH2 (1:200, 16888-1-AP, Proteintech, China) and anti-ATP2A2 (1:200, 67248-1-Ig, Proteintech, China) were used as primary antibody in an incubation at 4 °C overnight. On the second day, the sections were first incubated with horseradish peroxidase (HRP)-conjugated secondary antibodies (PV-6000; ZSGB-BIO, China) for 2 h and then stained with DAB, counterstained with hematoxylin successively. Sections were finally sealed with neutral gum. Photos were taken under an inverted optical microscope.

MMP detection

After the intervention, JC-1 solution (M8650, Solarbio) was added to the 6-well plates. Thoroughly mixed and incubated in the cell incubator at 37 °C for 20 min. Then cells were washed with JC-1 staining buffer for twice. Added 2 mL cell culture medium to each well to observe fluorescence intensity under a fluorescence microscope.

mPTP detection

Cells were cultured in a 12-well plate. mPTP opening degree was detected through mPTP Assay Kit (C2009S, Beyotime, China). After the intervention, cells were washed with PBS for twice, added 500 µL Calcein AM staining solution and 500 µL Ionomycin control respectively in the first two wells of untreated cells. Fluorescence quenching solution (500 µL) was added to each well of NC-OE, NC-siRNA, MTCH2-OE and MTCH2 siRNA group. Incubated at 37 °C for 45 min. The reagents were then replaced with pre-heated culture medium at 37 °C and incubated for 30 min away from light. After washed with PBS for twice, Assay buffer was added to each well for fluorescence intensity observation under a fluorescence microscope.

Western blotting

Cell protein was extracted through whole cell lysis assay kit (KGP2100, KeyGEN BioTECH, China). Cells were first oscillatory mixed in Lysis Buffer then centrifuged at 12000 g for 5 min. The supernatant is the protein extract. BCA Protein Assay Kit (PT0001, LEAGENE, China) was used to detected the concentration of cell protein. Afterwards, protein was separated with 10% SDS-PAGE and transferred onto PVDF membranes. The membranes were then incubated with 5% skimmed milk powder at room temperature for 2 h and primary antibodies: Anti-MTCH2 (1:5000, 16888-1-AP, proteintech, China), anti-Bax (1:4000, 50599-2-Ig, proteintech, China), anti-Bcl-2 (1:5000, 68103-1-Ig, proteintech, China), anti-Cytochrome c (1:4000, 10993-1-AP, proteintech, China), anti-ATP2A2 (1:5000, 67248-1-Ig, proteintech, China), anti-Vimentin (1:1000, bs-8533R, Bioss, China), anti-β-catenin (1:1000, bs-1165R, Bioss, China), anti-N-cadherin (1:1000, bs-1172R, Bioss, China), anti-E-cadherin (1:1000, 60335-1-Ig, proteintech, China), and anti-b-actin (1:2000, 20536-1-AP, proteintech, China) at 4 °C overnight. On the second day, the membranes were incubated with HRP-conjugated secondary antibody (1:5000, ZB-2301; ZB-2305, ZSGB-BIO, China) at room temperature for 1 h and visualized by enhanced chemiluminescence detection reagents (P1050, Applygen Technologies Inc., China). ImageJ software was used for the quantification of results.

Statistical analysis

SPSS 21.0 software and GraphPad Prism 7 software were used for statistical analysis. One-way or two-way analysis of variance (ANOVA) was used to analyze the significance of differences between groups. All values were displayed as mean ± SEM, representing three independent experiments, $P < 0.05$ was considered statistically significant.

RESULTS***The expression difference of MTCH2 in gastric cancer tissues and adjacent tissues***

The results of Gene Expression Profiling Interactive Analysis (GEPIA) database analysis showed that MTCH2 was overexpressed in gastric cancer. Compared with normal tissue; There was no difference in MTCH1 expression (Figure 1A). To determine how MTCH2 and ATP2A2 were expressed differently, we took tissue samples from 65 cases of poorly differentiated gastric cancer and para-carcinoma tissue. The results showed that MTCH2 was mainly expressed in cytoplasm and mitochondria, while ATP2A2 was mainly expressed in cytoplasm, and the expressions of both were significantly higher in gastric cancer tissues than in adjacent tissues (Figure 1B-D, Table 1), the expression of the two was positively correlated (Table 2). In this study, GES-1 and AGS were used. We constructed cell models of MTCH2 overexpression (MTCH2-OE) and MTCH2 silencing (MTCH2-siRNA), and screened sequences with significant transfection effect for expansion experiments (Figure 1E-J).

MTCH2 regulated the invasion and migration of gastric cancer cells

We observed the effects of MTCH2 on two types of cell invasion and migration. Wound-healing scratch assay (Figure 2A-D) and Transwell assay (Figure 2E-H) showed that MTCH2 overexpression promoted the invasion and migration of GES-1 and AGS cells, while MTCH2-siRNA had the opposite effect. The results indicated that MTCH2 regulated the ability of GES-1 and AGS cells to transfer.

MTCH2 regulated mitochondrial ATP production

In GES-1 and AGS cells, MTCH2 overexpression stimulated an increase in mitochondrial ATP synthesis, which supplied energy for the malignant phenotype of GES-1 cells and improved the capacity of AGS metastasis. To verify this hypothesis, fluorescent probes were used to detect mitochondrial ATP production (Figure 3A-D), and colony formation was observed through cloning experiments (Figure 3E-H). Overexpression of MTCH2 can increase ATP synthesis and promote proliferation in GES-1 and AGS cells. After MTCH2 knockdown, ATP production and cell proliferation of AGS cells were impaired. Therefore, MTCH2 has carcinogenic and pro-carcinogenic effects in the progression of gastric cancer cells.

Table 1 Relationship between mitochondrial carrier homolog 2 expression and clinical pathological features in gastric cancer patients

Clinical pathological features	<i>n</i>	MTCH2 expression		χ^2	<i>P</i> value
		Positive (<i>n</i> = 48)	Negative (<i>n</i> = 17)		
Gender					
Male	41	27	14	3.673	0.055
Female	24	21	3		
Age (yr)					
< 60	33	25	8	0.127	0.722
≥ 60	32	23	9		
Infiltration depth					
T1 + T2	29	16	13	9.454	0.002 ^b
T3 + T4	36	32	4		
TNM stage					
I + II	34	21	13	5.388	0.020 ^a
III + IV	31	27	4		
Lymph node					
Metastasis					
Yes	45	37	8	5.313	0.021 ^a
No	20	11	9		
Greater omentum metastasis					
Yes	37	31	6	4.392	0.036 ^a
No	28	17	11		
Survival					
Yes	44	29	15	4.442	0.035 ^a
No	21	19	2		

^a*P* < 0.05.^b*P* < 0.01.

MTCH2: Mitochondrial carrier homolog 2.

Table 2 Correlation between mitochondrial carrier homolog 2 and ATP2A2

Factor	Pearson correlation	<i>P</i> value
MTCH2 and ATP2A2	0.425	< 0.001 ^c

^c*P* < 0.001.

MTCH2: Mitochondrial carrier homolog 2.

MTCH2 regulated MMP levels

We confirmed the effect of MTCH2 on MMP of GES-1 and AGS cells by JC-1 staining. The results showed that overexpression of MTCH2 could up-regulate the red fluorescence of JC-1, accompanied by a decrease in the intensity of green fluorescence, resulting in an increase in MMP. Knocking down MTCH2 down-regulated the red fluorescence of JC-1, increased the green fluorescence intensity, and lead to the decrease of MMP. These results indicated that MTCH2 can affect mitochondrial function by regulating MMP. As a baseline for experimental outcomes, we employed the elimination of cell mitochondrial JC-1 as a positive control (Figure 4).

MTCH2 regulated the opening of mPTP and expression of apoptosis-related proteins

MMP is complementary to the opening of mPTP, and the conformational changes of mPTP structural proteins affect mitochondrial function. As a result, we used Calcein AM to detect the degree of mPTP openness. Compared with the NC-

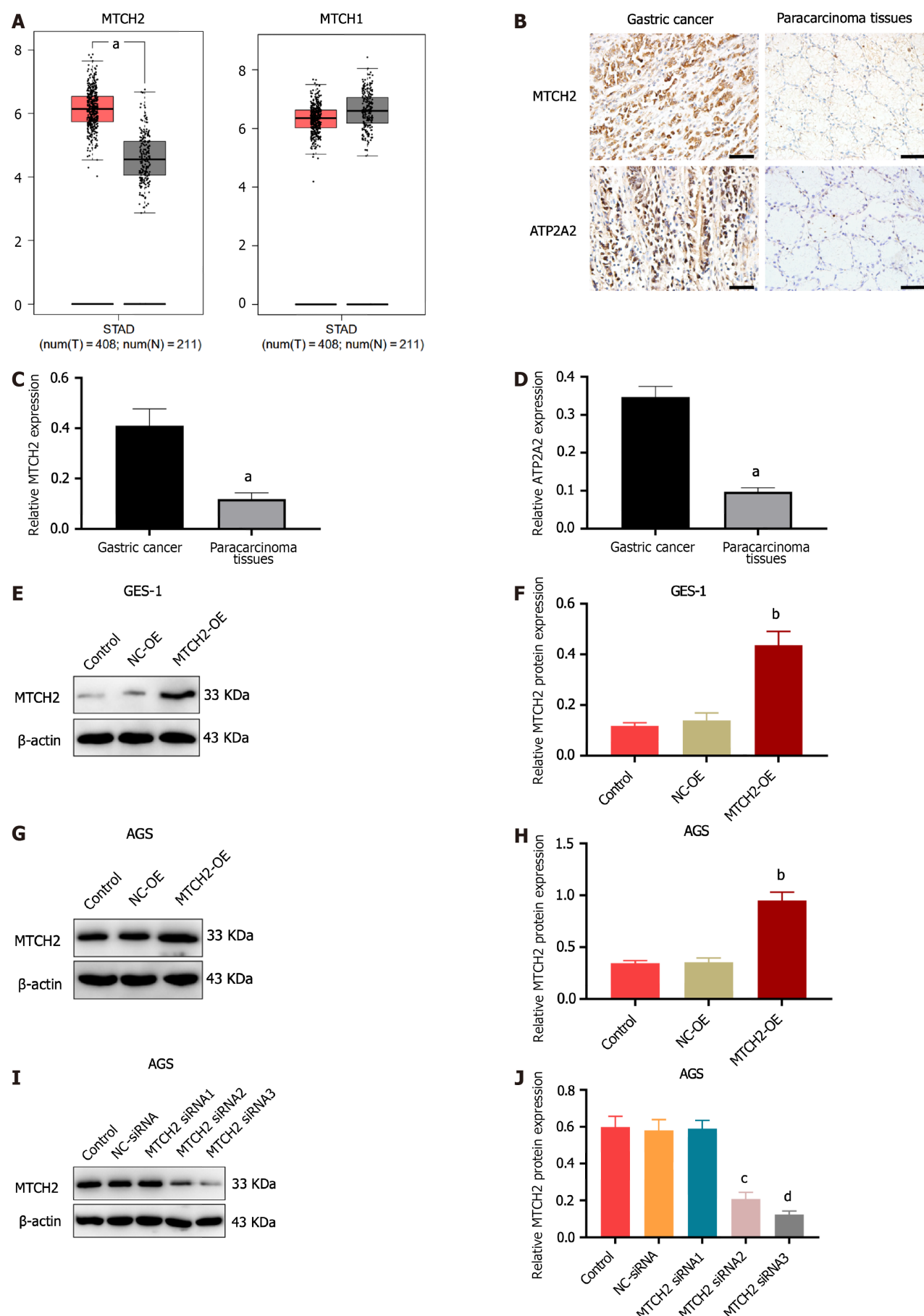


Figure 1 The expression difference of mitochondrial carrier homolog 2 in gastric cancer and paracancer tissues. A: Gene Expression Profiling Interactive Analysis (GEPIA) was used to analyze the expression of mitochondrial carrier homolog 2 (MTCH2) (left) and MTCH1 (right) in stomach adenocarcinoma;

B-D: Expression of MTCH2 and ATP2A2 in gastric cancer tissues and paracarcinoma tissues, $n = 65$; E-J: MTCH2-OE and MTCH2-siRNA transfection were validated by Western blotting (scale bar: 50 μm). MTCH: Mitochondrial carrier homolog; STAD: Stomach adenocarcinoma; GES-1: Human gastric epithelial cells; AGS: Human gastric cancer cells. ^a $P < 0.001$, compared with gastric cancer; ^b $P < 0.001$, compared with NC-OE; ^c $P < 0.001$, ^d $P < 0.001$, compared with NC-siRNA.

siRNA group, the green fluorescence was eliminated by knocking down MTCH2, indicating that mPTP had been opened. Compared with the NC-OE group, the green fluorescence was enhanced when MTCH2 was overexpressed, indicating that mPTP remaining off (Figure 5A-D). Calcein AM is used as a metal complexation indicator and Lonomycin is used as an mPTP open indicator.

We found that overexpression of MTCH2 can decrease the expression of Bax, cytochrome c (Cyto c), and promote the expression of Bcl-2; knocking down MTCH2 significantly decreased the expression of Bcl-2, and upregulated the expression of Bax and Cyto c (Figure 5E-L). These results indicated that MTCH2 can influence apoptosis of cells by regulating mitochondrial function.

MTCH2 and ATP2A2 are involved in malignant phenotype acquisition of gastric mucosa cells and metastasis of gastric cancer cells

Overexpression of MTCH2 can up-regulate the expression of MTCH2, ATP2A2, N-cadherin, Vimentin, β -catenin, and decrease the expression of E-cadherin in GES-1 cells, promoting the expression of factors related to malignant phenotypic markers (Figure 6A-G). The same effect was also observed in AGS cells. Importantly, in AGS cells, knocking down MTCH2 played the opposite role (Figure 6H-N). This fully indicates that MTCH2 can promote the malignant phenotype of GES-1 and enhance the malignant characteristics of AGS cells.

In order to further explore the mechanism of MTCH2 and ATP2A2 in gastric cancer cell metastasis, we simultaneously knocked down the expression of MTCH2 and ATP2A2. In AGS cells, the combination of MTCH2-siRNA and ATP2A2-siRNA can significantly down-regulate the expression of MTCH2, ATP2A2, N-cadherin, Vimentin, and β -catenin proteins, which is more significant than that of ATP2A2-siRNA alone (Figure 6O-T). These results indicate that MTCH2 and ATP2A2 play a role in the progression of gastric cancer, which is involved in the malignant phenotype of gastric mucosa cells and the metastasis of gastric cancer cells.

DISCUSSION

For a considerable period, mitochondrial functional proteins have been recognized as pivotal factors influencing tumor progression. Mitochondria, crucial in both cell culture and xenografts, are indispensable for initiating and sustaining tumor cell growth[15]. Throughout cancer cell progression, mitochondria play a vital role by supplying the necessary energy through energy conversion and biosynthesis[16]. Mitochondria maintain oxidative phosphorylation through the membrane potential gradient generated by the electron transport chain, which drives ATP synthesis[17]. MTCH2 plays an important role in mitochondrial energy metabolism[18]. Our study showed that MTCH2 is overexpressed in gastric cancer tissues and is closely related to the progression of gastric cancer. *In vitro* experiments, the up-regulation of MTCH2 expression promoted the malignant biological behavior of GES-1 and enhanced the metastasis ability of AGS cells. We have further found that MTCH2 influences mitochondrial function and apoptosis of GES-1 cells and gastric cancer cells by regulating MMP, mPTP opening and ATP production, indicating the value of MTCH2 in the study of malignant phenotype of gastric mucosa cells and metastasis of gastric cancer cells.

MTCH2 is intricately linked to numerous cellular processes, including cancer and diseases such as Alzheimer's, acting as a crucial "gateway" for various proteins to enter the mitochondrial[19,20]. Notably, MTCH2 can integrate with a key protein involved in programmed cell death, presenting a promising target for cancer therapy and potentially enhancing the sensitivity of cancer treatment[21]. Moreover, the overexpression of MTCH2 holds significant clinical value in predicting the risk of endometrial cancer[22]. In the context of breast cancer, targeting MTCH2 expression can effectively impede disease progression, underscoring its research potential in both the diagnosis and treatment of malignant tumors [21]. We have shown that MTCH2 overexpression in human gastric cancer tissues is related to invasion, metastasis, and survival rate, reflecting the clinical value of MTCH2 in the diagnosis and treatment of gastric cancer. In cancer research, the upregulation of MTCH1 has been observed to promote hepatocellular carcinoma cell proliferation, invasion, and migration[23]. Through the search of GEPIA database, MTCH2 is more valuable than MTCH1 in the study of gastric adenocarcinoma. Importantly, the results of this study suggest that overexpression of MTCH2 can promote the invasion and migration of GES-1 and AGS cells. Overexpression of MTCH2 can regulate the production of ATP and the formation of mitochondrial ATP synthase, and also regulate the expression of markers of malignancy in cytoplasm. We are consistent with the above views, if an excess of anti-cancer factors, pro-apoptotic factors, or mitochondria-targeting anti-cancer drugs is present within the cell, the action of MTCH2 as a membrane-inserting protein can be harnessed to achieve therapeutic effects. Obviously, gastric mucosa cells and gastric cancer cells have stronger metastasis ability after MTCH2 overexpression, and we speculate that the overexpression of MTCH2 could lead to the activation of more pro-cancer factors' insertions, as there might be a lack of additional anti-cancer factors. Based on the results obtained from the ATP fluorescence probe, it appears that the overexpression of MTCH2 induces an "excited" state in mitochondrial energy metabolism, thus providing the necessary energy supply for the progression of gastric cancer. These results enrich our new understanding of MTCH2 in the occurrence and development of gastric cancer.

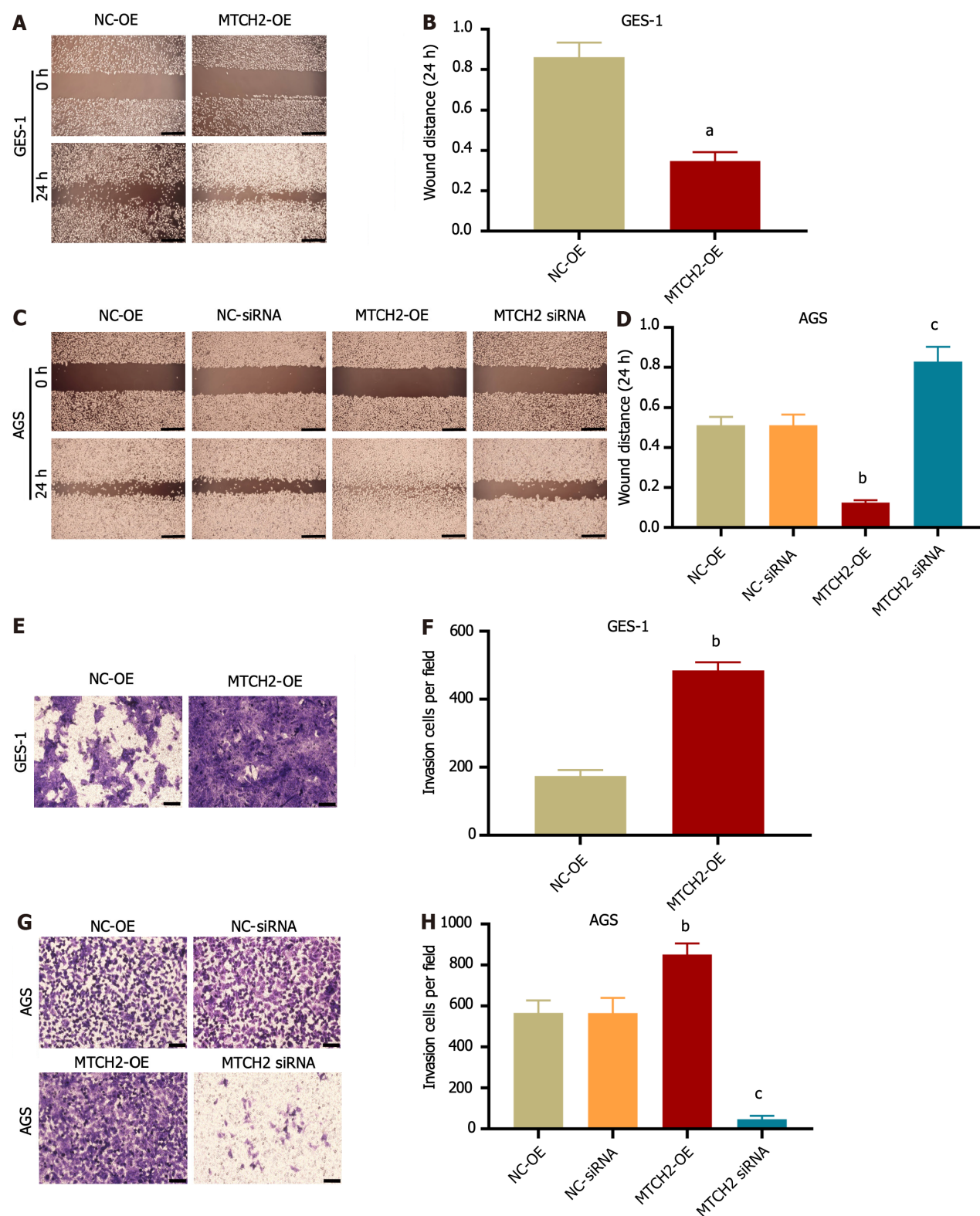


Figure 2 Effects of mitochondrial carrier homolog 2 on invasion and migration of human gastric mucosal cells and human gastric cancer cells. **A** and **C**: Migration of human gastric mucosal cell (GES-1) and human gastric cancer cells (AGS) was detected by scratch wound healing assay; **B** and **D**: Ratio of 24 h to 0 h wound distance, (scale bar: 400 μ m); **E** and **G**: Invasion ability of GES-1 and AGS cells was detected by transwell; **F** and **H**: The number of cells invaded in random fields of view (scale bar: 50 μ m). MTCH2: Mitochondrial carrier homolog 2; siRNA: Small interfering RNA; OE: Overexpression; NC-OE: Negative control of overexpression; NC-siRNA: Negative control of siRNA; GES-1: Human gastric mucosal cell; AGS: Human gastric cancer cells. ^a $P < 0.01$, ^b $P < 0.001$, compared with NC-OE; ^c $P < 0.001$, compared with NC-siRNA.

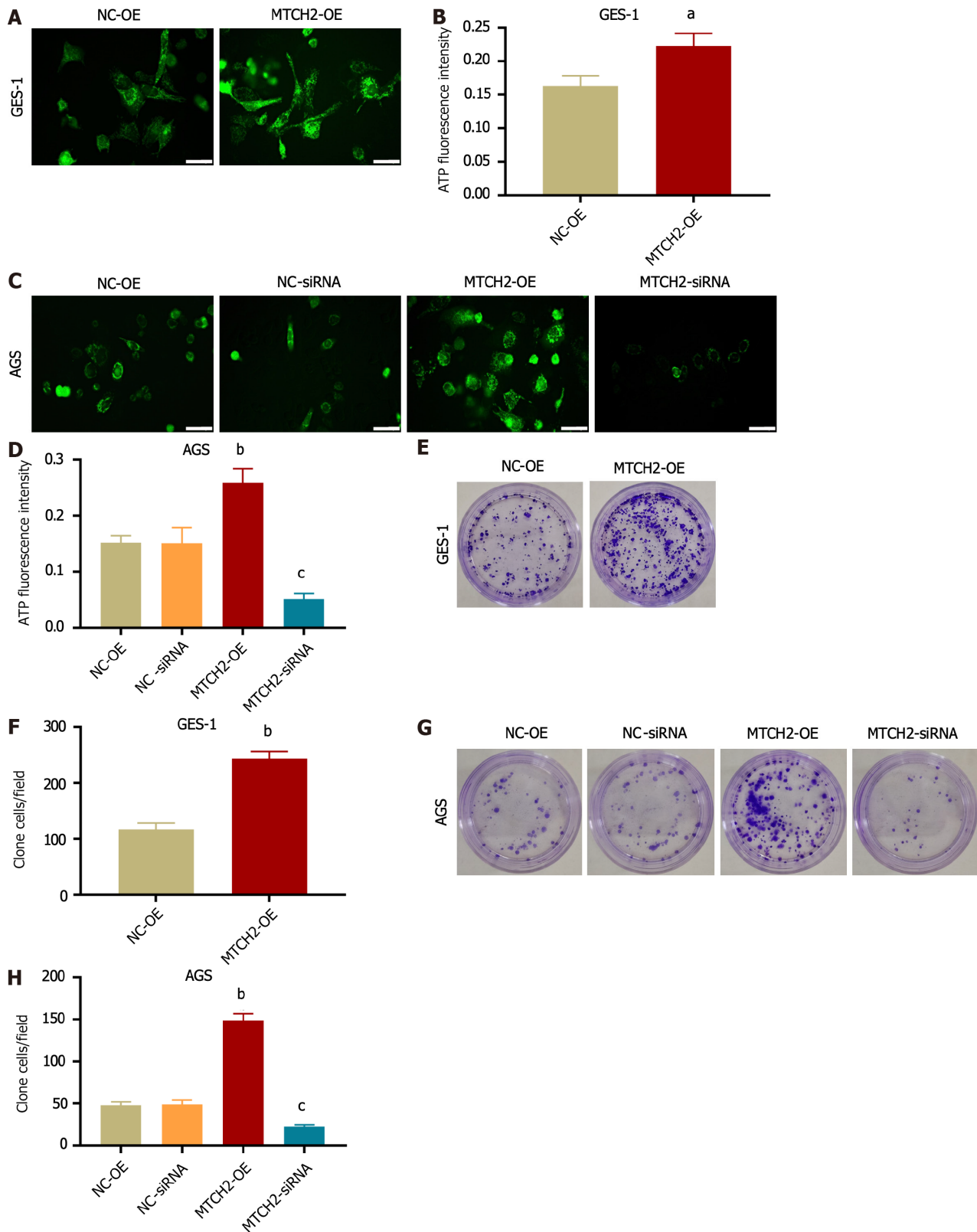


Figure 3 Mitochondrial carrier homolog 2 regulates mitochondrial ATP production. A and C: ATP concentration of human gastric mucosal cell (GES-1) and human gastric cancer cells (AGS) were detected through pcMV-AT1.03 plasmid transfection; B and D: Quantification of ATP fluorescence intensity (scale bar: 50 μ m); E and G: Detection of the proliferation of GES-1 and AGS cells after by colony formation assay; F and H: Number of cell colonies in different groups. MTCH2: Mitochondrial carrier homolog 2; siRNA: Small interfering RNA; OE: Overexpression; NC-OE: Negative control of overexpression; NC-siRNA: Negative control of siRNA; GES-1: Human gastric mucosal cell; AGS: Human gastric cancer cells. ^a $P < 0.05$, ^b $P < 0.001$ compared with NC-OE; ^c $P < 0.001$, compared with NC-siRNA.

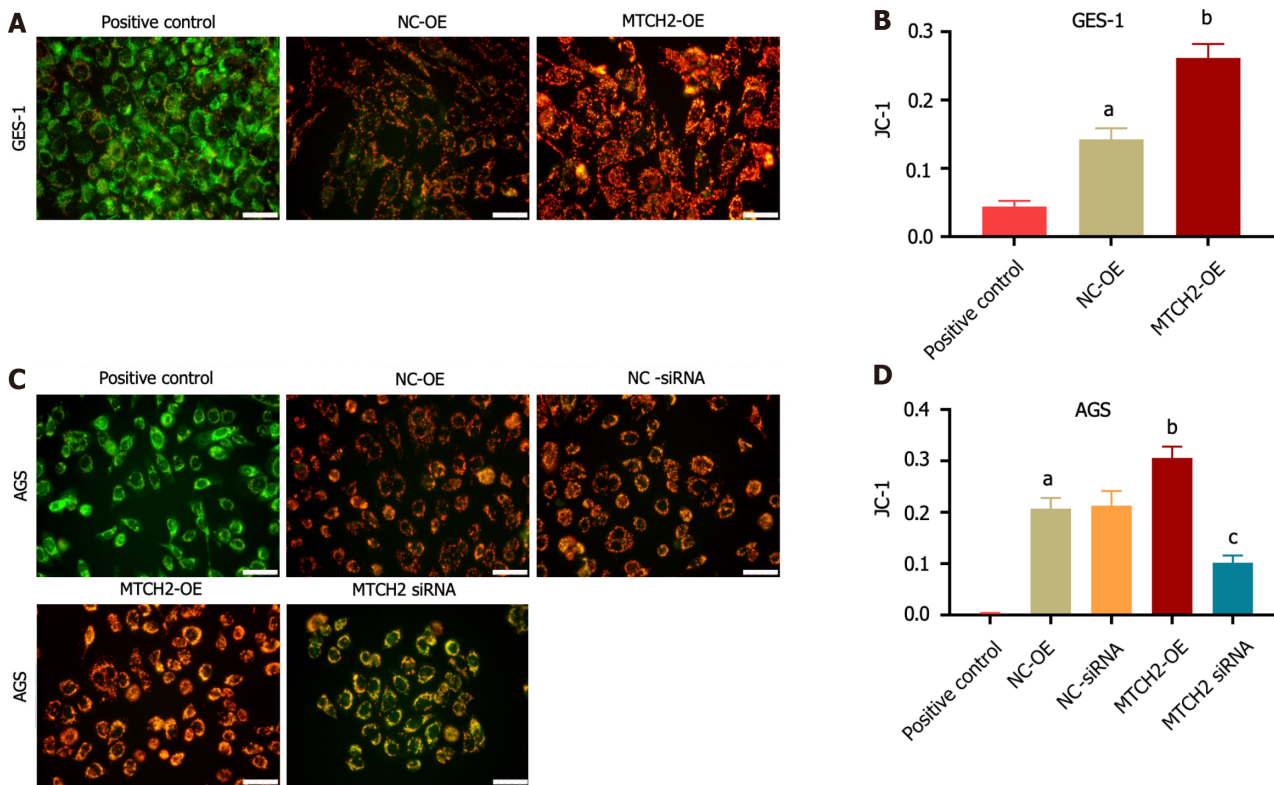


Figure 4 Mitochondrial carrier homolog 2 regulates the level of mitochondrial membrane potential. A and C: Mitochondrial membrane potential level of human gastric mucosal cell and human gastric cancer cells were detected by JC-1 staining; B and D: Quantification of JC-1 fluorescence intensity (scale bar: 50 μ m). MTCH2: Mitochondrial carrier homolog 2; siRNA: Small interfering RNA; OE: Overexpression; NC-OE: Negative control of overexpression; NC-siRNA: Negative control of siRNA; GES-1: Human gastric mucosal cell; AGS: Human gastric cancer cells. ^a $P < 0.001$, compared with positive control; ^b $P < 0.001$, compared with NC-OE; ^c $P < 0.001$, compared with NC-siRNA.

Mitochondrial ATP synthase plays a pivotal role in cancer cell energy metabolism, with ATP2A2 being one of the crucial sarcoplasmic (endoplasmic) reticulum calcium transporter ATPases responsible for shuttling cytoplasmic calcium ions into the endoplasmic reticulum. This process is involved in the development of various types of tumors[24]. ATP2A2, functioning as an ATP synthase-associated protein, plays a critical role in mitochondrial ion exchange and energy transmission, which significantly influences mitochondrial function[25]. Furthermore, ATP2A2 has been proven to be instrumental in regulating linc00221-mediated acute lymphoblastic leukemia cell proliferation and apoptosis[26]. Notably, overexpressed ATP2A2 has also been observed to promote the proliferation of colon cancer and prostate cancer cells[27,28]. In this study, overexpression of MTCH2 can up-regulate ATP2A2 expression, indicating that MTCH2 can regulate ATP synthase synthesis. However, this effect is inhibited upon downregulating MTCH2. This is likely attributed to the abnormal opening of mPTP. Research has revealed that an imbalance in ion proportions within mitochondria can lead to conformational changes in mitochondrial calcium uptake and ATP synthase dimers. This alteration prompts the opening of mPTP, causing decrease in MMP and ultimately culminating in cell death[29]. The opening of mPTP allows unrestricted movement of ions and small molecules, resulting in mitochondrial depolarization and ATP consumption, thereby triggering cell death[30]. Notably, abnormal mPTP opening has been shown to impact tumor growth in lung cancer cells (A549)[31]. Moreover, further investigations have indicated that mPTP activity in solid tumors is typically found to be in a closed state[32]. In our experiments, we observed that knocking down MTCH2 promotes mPTP opening, leading to a decrease in MMP and ATP depletion. Additionally, it suppresses the expression of the cell proliferation protein (Bcl-2) and enhances the expression of apoptotic factors (Bax, Cyt c). These findings align with the results of D'Orsi *et al*[8] and provide further insight into how MTCH2 influences cell proliferation and apoptosis by regulating mPTP opening status. Once again, this underscores the potential therapeutic significance of targeting MTCH2 for cancer treatment.

MTCH is a founding member of a unique class of membrane protein insertion enzymes that utilize SLC25 transporter folding[4]. MTCH2 and ATP synthase (ATP2A2) expression were correlated in human gastric cancer tissues. We constructed GES-1 and AGS cell models and suggested that MTCH2 regulates ATP2A2 expression and is associated with the activation of mPTP opening. We speculate that it may be related to the regulation mechanism of calcium homeostasis, and in the future, further in-depth research is warranted. Importantly, MTCH2 can promote the malignant phenotype of gastric mucosa cells and enhance the invasion, migration, and cell proliferation of gastric cancer cells. This has provided novel insights into the role of MTCH2 in gastric cancer research.

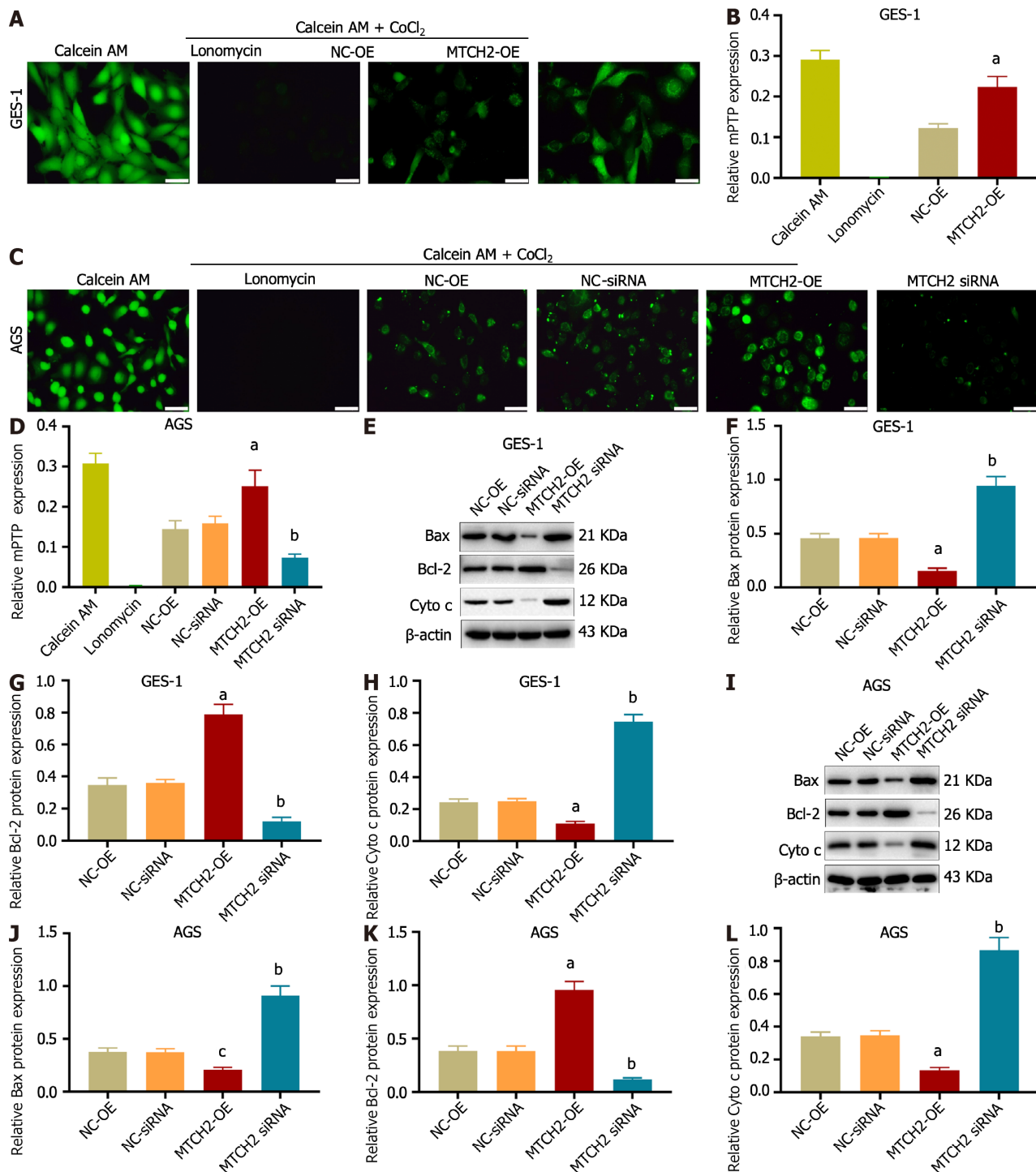
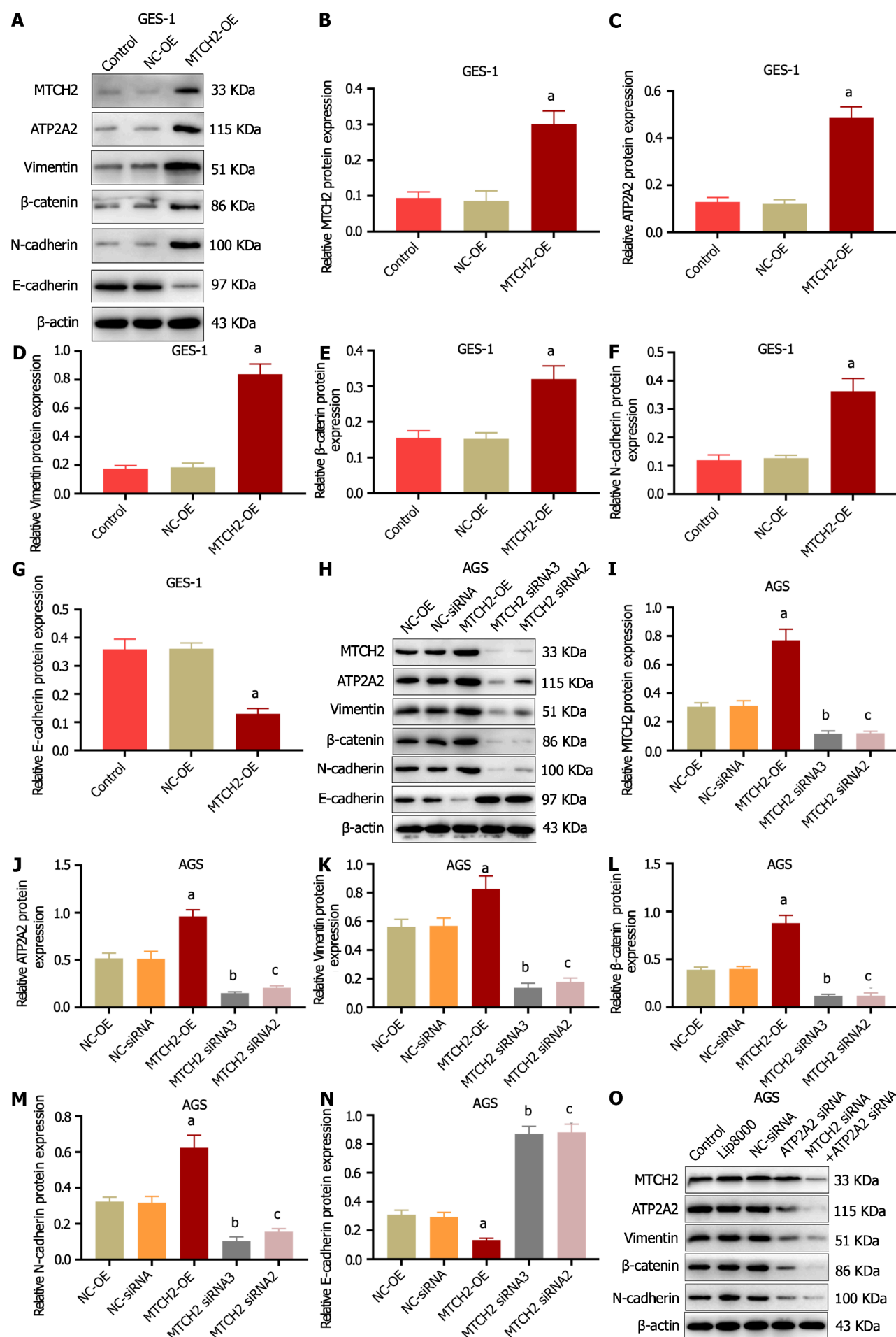


Figure 5 Mitochondrial carrier homolog 2 regulates the opening of mitochondrial permeability transition pore and expression of apoptosis-related proteins. A and C: The opening of mitochondrial permeability transition pore (mPTP) channels in human gastric mucosal cell (GES-1) and human gastric cancer cells (AGS) were detected by Calcein AM staining; B and D: Quantification of mPTP fluorescence intensity (scale bar: 50 μm); E-H: The expression level of Bax (E and F), Bcl-2 (E and G), and Cyto c (E and H) in mitochondrial carrier homolog 2 (MTCH2) overexpressed and MTCH2 silenced GES-1 cells were detected by Western blotting; I-L: The expression level of Bax (I and J), Bcl-2 (I and K), and Cyto c (I and L) in MTCH2 overexpressed and MTCH2 silenced AGS cells were detected by Western blotting. mPTP: Mitochondrial permeability transition pore; MTCH2: Mitochondrial carrier homolog 2; siRNA: Small interfering RNA; OE: Overexpression; NC-OE: Negative control of overexpression; NC-siRNA: Negative control of siRNA; GES-1: Human gastric mucosal cell; AGS: Human gastric cancer cells. **P* < 0.001, °*P* < 0.01, compared with NC-OE; #*P* < 0.001, compared with NC-siRNA.

CONCLUSION

MTCH2 can mediate ATP synthesis and ATP synthase synthesis by regulating mPTP of cancer cells, increase the malignant phenotype of GES-1 cells, promote the proliferation, invasion, and migration of gastric cancer cells, providing a basis for the targeted therapy of gastric cancer cells.



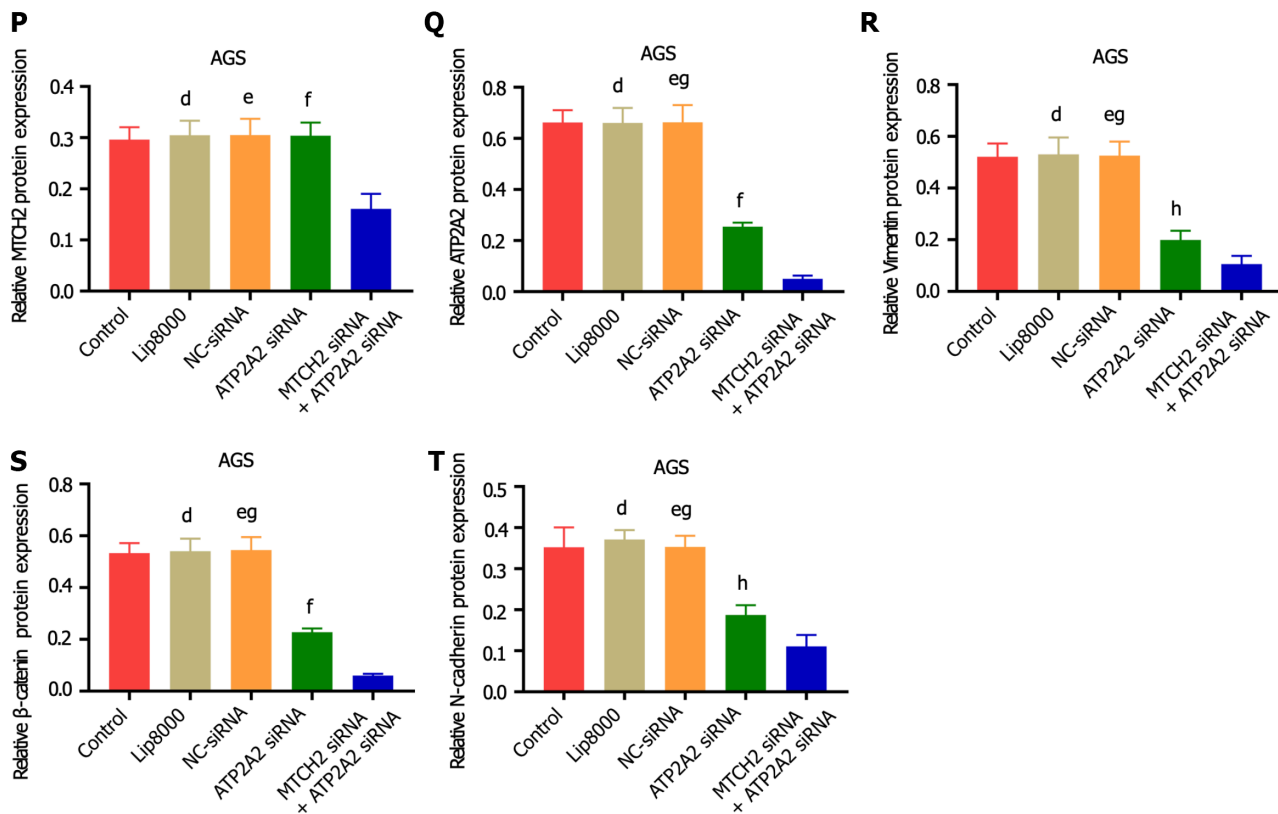


Figure 6 The expression of mitochondrial carrier homolog 2 and ATP2A2 is involved in the malignant phenotype of gastric epithelial cells and the metastasis of human gastric cancer cells. A-G: After mitochondrial carrier homolog 2 (MTCH2)-OE plasmid was transfected into gastric epithelial cells, changes of the expression level of MTCH2, ATP2A2, Vimentin, β-catenin, N-cadherin, and E-cadherin were detected; H-N: After human gastric cancer cells (AGS) were transfected with MTCH2-OE, MTCH2 siRNA3 and MTCH2 siRNA2, the expression level of MTCH2, ATP2A2, Vimentin, β-catenin, N-cadherin, and E-cadherin were detected by Western blotting; O-T: After AGS cells were transfected with MTCH2-siRNA or ATP2A2 siRNA, the expression level of MTCH2, ATP2A2, Vimentin, β-catenin, and N-cadherin were detected by Western blotting. NS: No significant; ^a $P < 0.001$, compared with NC-OE; ^b $P < 0.001$, compared with NC-siRNA; ^d $P < 0.001$, ^e $P < 0.001$, ^f $P < 0.001$, ^h $P < 0.05$, compared with MTCH2 siRNA + ATP2A2 siRNA; ^g $P < 0.001$, compared with ATP2A2 siRNA.

ARTICLE HIGHLIGHTS

Research background

Mitochondrial carrier homolog 2 (MTCH2), as an insertion enzyme of mitochondrial outer membrane protein, plays an important role in cellular production, energy expenditure and apoptosis induced by mitochondrial permeability transformation pore (mPTP) opening.

Research motivation

MTCH2 has been poorly studied in gastric cancer. The addition of MTCH2 research will provide a broader idea for the treatment of gastric cancer.

Research objectives

To investigate the precise role of MTCH2 in gastric cancer will providing a basis for the targeted therapy of gastric cancer.

Research methods

Sixty-five samples of poorly differentiated gastric cancer tissue and adjacent tissues were collected for MTCH2 and ATP2A2 expression detection. JC-1, mPTP, and ATP fluorescence probe were used for mitochondrial function detection. Wound healing, transwell, and colony formation assay were used for cell migration and proliferation evaluation. Western blotting experiments were conducted to detect the changes in the expression levels of related proteins.

Research results

Both MTCH2 and ATP2A2 are highly expressed in gastric cancer. MTCH2 promotes proliferation and migration of gastric cancer cells, enhances mitochondrial activity, and inhibits apoptosis.

Research conclusions

MTCH2 plays an important role in cellular production, energy expenditure and apoptosis in gastric cancer cells.

Research perspectives

We speculate that the regulation of MTCH2 opening to mPTP may be related to the regulatory mechanism of calcium homeostasis, which will be further studied in the future.

FOOTNOTES

Author contributions: Zhang JW and Wang XF designed the research study; Yu J, Zhang JW, Tian Y, and Li YN performed the research; Huang LY, Li YN, and Tian Y analyzed the data; Huang LY, Wang XF, and Yu J wrote the manuscript; all authors have read and approve the final manuscript.

Supported by the Medical Science Research Projects in Hebei Province, No. 20221526; and Natural Science Foundation, No. 2022-271.

Institutional review board statement: The study was reviewed and approved by the North China University of Science and Technology Institutional Review Board (Approval No. 2022032).

Conflict-of-interest statement: The authors have no conflicts of interest to declare.

Data sharing statement: Technical appendix, statistical code, and dataset available from the corresponding author at ztjwjwzt@163.com.

Open-Access: This article is an open-access article that was selected by an in-house editor and fully peer-reviewed by external reviewers. It is distributed in accordance with the Creative Commons Attribution NonCommercial (CC BY-NC 4.0) license, which permits others to distribute, remix, adapt, build upon this work non-commercially, and license their derivative works on different terms, provided the original work is properly cited and the use is non-commercial. See: <https://creativecommons.org/licenses/by-nc/4.0/>

Country/Territory of origin: China

ORCID number: Jing-Wen Zhang 0000-0002-6218-5667; Ling-Yan Huang 0009-0007-5014-5127; Ya-Ning Li 0009-0006-6889-6837; Ying Tian 0009-0008-5116-4714; Jia Yu 0009-0007-5901-8829; Xiao-Fei Wang 0000-0002-3726-9455.

S-Editor: Chen YL

L-Editor: A

P-Editor: Zhang XD

REFERENCES

- 1 Zhao Y, Zhou L, Li H, Sun T, Wen X, Li X, Meng Y, Li Y, Liu M, Liu S, Kim SJ, Xiao J, Li L, Zhang S, Li W, Cohen P, Hoffman AR, Hu JF, Cui J. Nuclear-Encoded lncRNA MALAT1 Epigenetically Controls Metabolic Reprogramming in HCC Cells through the Mitophagy Pathway. *Mol Ther Nucleic Acids* 2021; **23**: 264-276 [PMID: 33425485 DOI: 10.1016/j.omtn.2020.09.040]
- 2 Zhuang H, He X, Li H, Chen Y, Wu T, Jiang X, Zhang H, Zhao P, Wang Y, Chen J, Zhang J, Liu Y, Bu W. MnS Nanocapsule Mediates Mitochondrial Membrane Permeability Transition for Tumor Ion-Interference Therapy. *ACS Nano* 2023; **17**: 13872-13884 [PMID: 37458394 DOI: 10.1021/acsnano.3c03670]
- 3 Popgeorgiev N, Gil C, Berthenet K, Bertolin G, Ichim G. Shedding light on mitochondrial outer-membrane permeabilization and membrane potential: State of the art methods and biosensors. *Semin Cell Dev Biol* 2024; **156**: 58-65 [PMID: 37438211 DOI: 10.1016/j.semedb.2023.07.003]
- 4 Guna A, Stevens TA, Inglis AJ, Replogle JM, Esantsi TK, Muthukumar G, Shaffer KCL, Wang ML, Pogson AN, Jones JJ, Lomenick B, Chou TF, Weissman JS, Voorhees RM. MTCH2 is a mitochondrial outer membrane protein insertase. *Science* 2022; **378**: 317-322 [PMID: 36264797 DOI: 10.1126/science.add1856]
- 5 Peng L, Zhao M, Liu T, Chen J, Gao P, Chen L, Xing P, Wang Z, Di J, Xu Q, Qu H, Jiang B, Su X. A stop-gain mutation in GXYLT1 promotes metastasis of colorectal cancer via the MAPK pathway. *Cell Death Dis* 2022; **13**: 395 [PMID: 35459861 DOI: 10.1038/s41419-022-04844-3]
- 6 Wang Q, Karvelsson ST, Johannsson F, Vilhjalmsdottir AI, Hagen L, de Miranda Fonseca D, Sharma A, Slupphaug G, Rolfsson O. UDP-glucose dehydrogenase expression is upregulated following EMT and differentially affects intracellular glycerophosphocholine and acetylaspartate levels in breast mesenchymal cell lines. *Mol Oncol* 2022; **16**: 1816-1840 [PMID: 34942055 DOI: 10.1002/1878-0261.13172]
- 7 Dachy G, Fraita S, Boulouadnine B, Cordi S, Demoulin JB. Novel COL4A1-VEGFD gene fusion in myofibroma. *J Cell Mol Med* 2021; **25**: 4387-4394 [PMID: 33830670 DOI: 10.1111/jcmm.16502]
- 8 D'Orsi B, Niewidok N, Dussmann H, Prehn JHM. Mitochondrial Carrier Homolog 2 Functionally Co-operates With BH3 Interacting-Domain Death Agonist in Promoting Ca(2+)-Induced Neuronal Injury. *Front Cell Dev Biol* 2021; **9**: 750100 [PMID: 34708044 DOI: 10.3389/fcell.2021.750100]
- 9 Leem YH, Park JS, Park JE, Kim DY, Kim HS. Suppression of neuroinflammation and α -synuclein oligomerization by rotarod walking exercise in subacute MPTP model of Parkinson's disease. *Neurochem Int* 2023; **165**: 105519 [PMID: 36931345 DOI: 10.1016/j.neuint.2023.105519]
- 10 Hu Z, Wang D, Gong J, Li Y, Ma Z, Luo T, Jia X, Shi Y, Song Z. MSCs Deliver Hypoxia-Treated Mitochondria Reprogramming Acinar Metabolism to Alleviate Severe Acute Pancreatitis Injury. *Adv Sci (Weinh)* 2023; **10**: e2207691 [PMID: 37409821 DOI: 10.1002/advsc.202207691]
- 11 Waseem M, Wang BD. Promising Strategy of mPTP Modulation in Cancer Therapy: An Emerging Progress and Future Insight. *Int J Mol Sci*

- 2023; **24** [PMID: 36982637 DOI: 10.3390/ijms24065564]
- 12 **Qin X**, Xu Y, Peng S, Qian S, Zhang X, Shen S, Yang J, Ye J. Sodium butyrate opens mitochondrial permeability transition pore (mPTP) to induce a proton leak in induction of cell apoptosis. *Biochem Biophys Res Commun* 2020; **527**: 611-617 [PMID: 32423794 DOI: 10.1016/j.bbrc.2020.04.133]
- 13 **Andelova N**, Waczulikova I, Talian I, Sykora M, Ferko M. mPTP Proteins Regulated by Streptozotocin-Induced Diabetes Mellitus Are Effectively Involved in the Processes of Maintaining Myocardial Metabolic Adaptation. *Int J Mol Sci* 2020; **21** [PMID: 32283821 DOI: 10.3390/ijms21072622]
- 14 **de Freitas Germano J**, Sharma A, Stastna M, Huang C, Aniaq M, Aceves A, Van Eyk JE, Mentzer RM Jr, Piplani H, Andres AM, Gottlieb RA. Proteomics of Mouse Heart Ventricles Reveals Mitochondria and Metabolism as Major Targets of a Post-Infarction Short-Acting GLP1Ra-Therapy. *Int J Mol Sci* 2021; **22** [PMID: 34445425 DOI: 10.3390/ijms22168711]
- 15 **Ma D**, Pignanelli C, Tarade D, Gilbert T, Noel M, Mansour F, Adams S, Dowhayko A, Stokes K, Vshyenko S, Hudlicky T, McNulty J, Pandey S. Cancer Cell Mitochondria Targeting by Pancerstatin Analogs is Dependent on Functional Complex II and III. *Sci Rep* 2017; **7**: 42957 [PMID: 28220885 DOI: 10.1038/srep42957]
- 16 **Liu Y**, Chen C, Wang X, Sun Y, Zhang J, Chen J, Shi Y. An Epigenetic Role of Mitochondria in Cancer. *Cells* 2022; **11** [PMID: 36010594 DOI: 10.3390/cells11162518]
- 17 **Nolfi-Donagan D**, Braganza A, Shiva S. Mitochondrial electron transport chain: Oxidative phosphorylation, oxidant production, and methods of measurement. *Redox Biol* 2020; **37**: 101674 [PMID: 32811789 DOI: 10.1016/j.redox.2020.101674]
- 18 **Aloni E**, Ruggiero A, Gross A, Segal M. Learning Deficits in Adult Mitochondria Carrier Homolog 2 Forebrain Knockout Mouse. *Neuroscience* 2018; **394**: 156-163 [PMID: 30401654 DOI: 10.1016/j.neuroscience.2018.10.035]
- 19 **Ruggiero A**, Aloni E, Korkotian E, Zaltsman Y, Oni-Biton E, Kuperman Y, Tsoory M, Shachnai L, Levin-Zaidman S, Brenner O, Segal M, Gross A. Loss of forebrain MTCH2 decreases mitochondria motility and calcium handling and impairs hippocampal-dependent cognitive functions. *Sci Rep* 2017; **7**: 44401 [PMID: 28276496 DOI: 10.1038/srep44401]
- 20 **Yuan Q**, Yang W, Zhang S, Li T, Zuo M, Zhou X, Li J, Li M, Xia X, Chen M, Liu Y. Inhibition of mitochondrial carrier homolog 2 (MTCH2) suppresses tumor invasion and enhances sensitivity to temozolomide in malignant glioma. *Mol Med* 2021; **27**: 7 [PMID: 33509092 DOI: 10.1186/s10020-020-00261-4]
- 21 **Katz C**, Zaltsman-Amir Y, Mostizky Y, Kollet N, Gross A, Friedler A. Molecular basis of the interaction between proapoptotic truncated BID (tBID) protein and mitochondrial carrier homologue 2 (MTCH2) protein: key players in mitochondrial death pathway. *J Biol Chem* 2012; **287**: 15016-15023 [PMID: 22416135 DOI: 10.1074/jbc.M111.328377]
- 22 **Delahanty RJ**, Beeghly-Fadiel A, Xiang YB, Long J, Cai Q, Wen W, Xu WH, Cai H, He J, Gao YT, Zheng W, Shu XO. Association of obesity-related genetic variants with endometrial cancer risk: a report from the Shanghai Endometrial Cancer Genetics Study. *Am J Epidemiol* 2011; **174**: 1115-1126 [PMID: 21976109 DOI: 10.1093/aje/kwr233]
- 23 **Chen G**, Mo S, Yuan D. Upregulation Mitochondrial Carrier 1 (MTCH1) Is Associated with Cell Proliferation, Invasion, and Migration of Liver Hepatocellular Carcinoma. *Biomed Res Int* 2021; **2021**: 9911784 [PMID: 34195286 DOI: 10.1155/2021/9911784]
- 24 **Zarain-Herzberg Á**, Izquierdo-Torres E, Hernández-Oliveras A, Rodríguez G, Lozano-Arriaga D. Sarcoplasmic reticulum Ca(2+) ATPases genes differential expression in breast cancer cells. *Gac Med Mex* 2021; **157**: 343-349 [PMID: 35133336 DOI: 10.24875/GMM.M21000573]
- 25 **Papp B**, Brouland JP. Altered Endoplasmic Reticulum Calcium Pump Expression during Breast Tumorigenesis. *Breast Cancer (Auckl)* 2011; **5**: 163-174 [PMID: 21863130 DOI: 10.4137/BCBCR.S7481]
- 26 **Huang M**, Zheng J, Ren Y, Zhu J, Kou L, Nie J. LINC00221 suppresses the malignancy of children acute lymphoblastic leukemia. *Biosci Rep* 2020; **40** [PMID: 32297639 DOI: 10.1042/BSR20194070]
- 27 **Crépin A**, Bidaux G, Vanden-Abee F, Dewailly E, Goffin V, Prevarskaya N, Slomianny C. Prolactin stimulates prostate cell proliferation by increasing endoplasmic reticulum content due to SERCA 2b over-expression. *Biochem J* 2007; **401**: 49-55 [PMID: 16965263 DOI: 10.1042/bj20060870]
- 28 **Fan L**, Li A, Li W, Cai P, Yang B, Zhang M, Gu Y, Shu Y, Sun Y, Shen Y, Wu X, Hu G, Xu Q. Novel role of Sarco/endoplasmic reticulum calcium ATPase 2 in development of colorectal cancer and its regulation by F36, a curcumin analog. *Biomed Pharmacother* 2014; **68**: 1141-1148 [PMID: 25458791 DOI: 10.1016/j.biopha.2014.10.014]
- 29 **Monteiro J**, Marks CA, Braga PC, Bernardino RL, Alves MG, Lobo-da-Cunha A, Videira A, Pereira F. The role of ion homeostasis imbalance due to citrate accumulation in fluoroacetic acid (FAA) toxicity in *Neurospora crassa*. *Comp Biochem Physiol C Toxicol Pharmacol* 2023; **271**: 109661 [PMID: 37207739 DOI: 10.1016/j.cbpc.2023.109661]
- 30 **Elustondo PA**, Nichols M, Negoda A, Thirumaran A, Zakharian E, Robertson GS, Pavlov EV. Mitochondrial permeability transition pore induction is linked to formation of the complex of ATPase C-subunit, polyhydroxybutyrate and inorganic polyphosphate. *Cell Death Discov* 2016; **2**: 16070 [PMID: 27924223 DOI: 10.1038/cddiscovery.2016.70]
- 31 **Zhang R**, Li G, Zhang Q, Tang Q, Huang J, Hu C, Liu Y, Wang Q, Liu W, Gao N, Zhou S. Hirsutine induces mPTP-dependent apoptosis through ROCK1/PTEN/PI3K/GSK3 β pathway in human lung cancer cells. *Cell Death Dis* 2018; **9**: 598 [PMID: 29789524 DOI: 10.1038/s41419-018-0641-7]
- 32 **Bonora M**, Pinton P. The mitochondrial permeability transition pore and cancer: molecular mechanisms involved in cell death. *Front Oncol* 2014; **4**: 302 [PMID: 25478322 DOI: 10.3389/fonc.2014.00302]



Published by **Baishideng Publishing Group Inc**
7041 Koll Center Parkway, Suite 160, Pleasanton, CA 94566, USA

Telephone: +1-925-3991568

E-mail: office@baishideng.com

Help Desk: <https://www.f6publishing.com/helpdesk>

<https://www.wjgnet.com>

