

# World Journal of *Stem Cells*

*World J Stem Cells* 2019 December 26; 11(12): 1020-1141



**REVIEW**

- 1020** Induced pluripotent stem cells for therapy personalization in pediatric patients: Focus on drug-induced adverse events  
*Genova E, Cavion F, Lucafò M, Leo LD, Pelin M, Stocco G, Decorti G*
- 1045** Influence of olive oil and its components on mesenchymal stem cell biology  
*Casado-Díaz A, Dorado G, Quesada-Gómez JM*
- 1065** Three-dimensional cell culture systems as an *in vitro* platform for cancer and stem cell modeling  
*Chaicharoenaudomrung N, Kunhorm P, Noisa P*
- 1084** Small molecules for mesenchymal stem cell fate determination  
*Cheng YH, Dong JC, Bian Q*
- 1104** Mechanoresponse of stem cells for vascular repair  
*Tian GE, Zhou JT, Liu XJ, Huang YC*

**ORIGINAL ARTICLE****Basic Study**

- 1115** Anti-osteoarthritis effect of a combination treatment with human adipose tissue-derived mesenchymal stem cells and thrombospondin 2 in rabbits  
*Shin K, Cha Y, Ban YH, Seo DW, Choi EK, Park D, Kang SK, Ra JC, Kim YB*
- 1130** MiR-301a promotes embryonic stem cell differentiation to cardiomyocytes  
*Zhen LX, Gu YY, Zhao Q, Zhu HF, Lv JH, Li SJ, Xu Z, Li L, Yu ZR*

**ABOUT COVER**

Editorial Board Member of *World Journal of Stem Cells*, Manabu Akahane, MD, PhD, Associate Professor, Public Health, Health Management and Policy, Nara Medical University School of Medicine, Nara 634-8521, Japan

**AIMS AND SCOPE**

The primary aim of *World Journal of Stem Cells (WJSC, World J Stem Cells)* is to provide scholars and readers from various fields of stem cells with a platform to publish high-quality basic and clinical research articles and communicate their research findings online.

WJSC publishes articles reporting research results obtained in the field of stem cell biology and regenerative medicine, related to the wide range of stem cells including embryonic stem cells, germline stem cells, tissue-specific stem cells, adult stem cells, mesenchymal stromal cells, induced pluripotent stem cells, embryoid bodies, embryonal carcinoma stem cells, hemangioblasts, hematopoietic stem cells, lymphoid progenitor cells, myeloid progenitor cells, etc.

**INDEXING/ABSTRACTING**

The WJSC is now indexed in PubMed, PubMed Central, Science Citation Index Expanded (also known as SciSearch®), Journal Citation Reports/Science Edition, Biological Abstracts, and BIOSIS Previews. The 2019 Edition of Journal Citation Reports cites the 2018 impact factor for WJSC as 3.534 (5-year impact factor: N/A), ranking WJSC as 16 among 26 journals in Cell and Tissue Engineering (quartile in category Q3), and 94 among 193 journals in Cell Biology (quartile in category Q2).

**RESPONSIBLE EDITORS FOR THIS ISSUE**

Responsible Electronic Editor: Yan-Xia Xing

Proofing Production Department Director: Yun-Xiaojuan Wu

**NAME OF JOURNAL**

*World Journal of Stem Cells*

**ISSN**

ISSN 1948-0210 (online)

**LAUNCH DATE**

December 31, 2009

**FREQUENCY**

Monthly

**EDITORS-IN-CHIEF**

Tong Cao, Shengwen Calvin Li, Carlo Ventura

**EDITORIAL BOARD MEMBERS**

<https://www.wjgnet.com/1948-0210/editorialboard.htm>

**EDITORIAL OFFICE**

Jin-Lei Wang, Director

**PUBLICATION DATE**

December 26, 2019

**COPYRIGHT**

© 2019 Baishideng Publishing Group Inc

**INSTRUCTIONS TO AUTHORS**

<https://www.wjgnet.com/bpg/gerinfo/204>

**GUIDELINES FOR ETHICS DOCUMENTS**

<https://www.wjgnet.com/bpg/GerInfo/287>

**GUIDELINES FOR NON-NATIVE SPEAKERS OF ENGLISH**

<https://www.wjgnet.com/bpg/gerinfo/240>

**PUBLICATION MISCONDUCT**

<https://www.wjgnet.com/bpg/gerinfo/208>

**ARTICLE PROCESSING CHARGE**

<https://www.wjgnet.com/bpg/gerinfo/242>

**STEPS FOR SUBMITTING MANUSCRIPTS**

<https://www.wjgnet.com/bpg/GerInfo/239>

**ONLINE SUBMISSION**

<https://www.f6publishing.com>



## Three-dimensional cell culture systems as an *in vitro* platform for cancer and stem cell modeling

Nipha Chaicharoenaudomrung, Phongsakorn Kunhorm, Parinya Noisa

**ORCID number:** Nipha Chaicharoenaudomrung (0000-0002-7154-5257); Phongsakorn Kunhorm (0000-0001-8087-2877); Parinya Noisa (0000-0002-1474-7792).

### Author contributions:

Chaicharoenaudomrung N and Kunhorm P contributed equally to this work; Noisa P designed the layout of the review article and edited the work; Chaicharoenaudomrung N and Kunhorm P wrote the paper.

**Conflict-of-interest statement:** No potential conflicts of interest.

**Open-Access:** This article is an open-access article which was selected by an in-house editor and fully peer-reviewed by external reviewers. It is distributed in accordance with the Creative Commons Attribution Non Commercial (CC BY-NC 4.0) license, which permits others to distribute, remix, adapt, build upon this work non-commercially, and license their derivative works on different terms, provided the original work is properly cited and the use is non-commercial. See: <http://creativecommons.org/licenses/by-nc/4.0/>

**Manuscript source:** Invited manuscript

**Received:** February 27, 2019

**Peer-review started:** February 27, 2019

**First decision:** August 1, 2019

**Revised:** October 9, 2019

**Accepted:** November 4, 2019

**Article in press:** November 4, 2019

**Nipha Chaicharoenaudomrung, Phongsakorn Kunhorm, Parinya Noisa**, Laboratory of Cell-Based Assays and Innovations, School of Biotechnology, Institute of Agricultural Technology, Suranaree University of Technology, Nakhon Ratchasima 30000, Thailand

**Corresponding author:** Parinya Noisa, PhD, Assistant Professor, Laboratory of Cell-Based Assays and Innovations, School of Biotechnology, Institute of Agricultural Technology, Suranaree University of Technology, 111 University Avenue, Nakhon Ratchasima 30000, Thailand. [p.noisa@sut.ac.th](mailto:p.noisa@sut.ac.th)

**Telephone:** +66-61-6266390

**Fax:** +66-44-224154

### Abstract

Three-dimensional (3D) culture systems are becoming increasingly popular due to their ability to mimic tissue-like structures more effectively than the monolayer cultures. In cancer and stem cell research, the natural cell characteristics and architectures are closely mimicked by the 3D cell models. Thus, the 3D cell cultures are promising and suitable systems for various proposes, ranging from disease modeling to drug target identification as well as potential therapeutic substances that may transform our lives. This review provides a comprehensive compendium of recent advancements in culturing cells, in particular cancer and stem cells, using 3D culture techniques. The major approaches highlighted here include cell spheroids, hydrogel embedding, bioreactors, scaffolds, and bioprinting. In addition, the progress of employing 3D cell culture systems as a platform for cancer and stem cell research was addressed, and the prominent studies of 3D cell culture systems were discussed.

**Key words:** Three-dimensional cultures; Cancer; Stem cells; Disease modeling; *In vitro* screening platform

©The Author(s) 2019. Published by Baishideng Publishing Group Inc. All rights reserved.

**Core tip:** Three-dimensional cell culture systems are considered an *in vitro* platform for cancer and stem cell research, which hold a great potential as a tool for drug discovery and disease modeling. With such systems, the success rate in disease modeling, drug target identification, and anticancer screening could be accelerated and result in an emergence of a novel and effective therapeutic means as well as the development of tissue replacement substances that may transform our lives.

**Published online:** December 26, 2019

**P-Reviewer:** Redondo PC, Rodrigues-Lisoni FC, Su CC

**S-Editor:** Dou Y

**L-Editor:** Filipodia

**E-Editor:** Qi LL



**Citation:** Chaicharoenaudomrung N, Kunhorm P, Noisa P. Three-dimensional cell culture systems as an *in vitro* platform for cancer and stem cell modeling. *World J Stem Cells* 2019; 11(12): 1065-1083

**URL:** <https://www.wjgnet.com/1948-0210/full/v11/i12/1065.htm>

**DOI:** <https://dx.doi.org/10.4252/wjsc.v11.i12.1065>

## INTRODUCTION

Cancer is one of the most serious diseases causing almost one in six deaths globally, which is estimated to equal 9.6 million deaths in 2018<sup>[1]</sup>. Considerable efforts have been intended to develop effective approaches to cure cancer. Among them, drug discovery could be one of the most important approaches aiming to identify and verify new and potent anticancer agents for both daily medication and chemotherapy. For testing the capability of novel anticancer drugs, the experiments are performed on cell-based assays, which offer information about cellular responses to drugs in cost/time effective and high throughput manners.

Currently, two-dimensional (2D) platforms in which flat monolayer cells are cultured is still the most commonly used for the research of cell-based assays. The 2D cell culture systems are easy, convenient, cost-effective, and widely used. However, various drawbacks and limitations are still of concern. The first drawback of a 2D cell culture systems is that an actual three-dimensional (3D) environment in which cancer cells reside *in vivo* is not accurately mimicked<sup>[2]</sup>. The irrelevant 2D environment may provide misleading results regarding the predicted responses of cancer cells to anticancer drugs<sup>[3]</sup>. Generally, standard preclinical screening procedures for therapeutic agents involve identification of compounds from the 2D cell culture system tests and animal model tests and then to the introduction of clinical trials<sup>[4]</sup>. Along with each phase, the percentage of efficient agents dramatically decreases. Less than 5% of anticancer agents and small molecule oncology therapeutics passed the clinical trials and were finally approved for marketing by the regulatory agencies<sup>[5]</sup>. One possible cause of the failure is that drug responses of 2D cell cultures systems did not consistently predict the outcome of clinical studies<sup>[5-7]</sup>.

The key limitation of traditional 2D culture is the failure to imitate the *in vivo* architecture and microenvironments. As a consequence, there are many different features that 2Dcultured cells possess compared with *in vivo* cells such as morphological characteristics, proliferation and differentiation potentials, interactions of cell-cell and cell-surrounding matrix, and signal transduction<sup>[8,9]</sup>. Such concerns inspired the emergence of 3D cell cultures systems, a promising approach to overcome the inconsistency between cell-based assays and clinical trials. The 3D cell culture systems provided the novel cell-based assays with more physiological relevance, especially the behavioral similarity to the *in vivo* cells. Over the last decade, a variety of *in vitro* platforms was developed to achieve the 3D culture systems for cancer and stem cell applications such as novel drug development, cancer and stem cell biological research, tissue engineering for *in vivo* implantation, and other experimental cell analyses<sup>[10-12]</sup>. Thus, the study of cellular phenomena in a conditions that closely imitates *in vivo* scenery could be elaborately constructed *in vitro*<sup>[11,13,14]</sup>.

Here, we aim to demonstrate the necessity of novel 3D cell culture systems and describe, compare, and contrast the 3D cell cultures techniques that has been developed to date. In addition, we also present the possibility to be applied in cancer and stem cell aspects.

## CELL CULTURE AS A RESEARCH MODEL

In 1907, Harrison *et al*<sup>[15]</sup> implemented the cell culture technique to his research, exploring the origin and the development of nerve fibers. Since then, the technique has been continuously improved, and cell-based experiments can be effortlessly conducted based on such cell culture technique due to cell banking<sup>[16]</sup>. The selection of cell culture procedures for cancer research is the key for the better understanding of tumor biology, resulting in the optimal and effective conditions for radio/chemotherapy as well as the discovery of new cancer treatment strategies<sup>[17]</sup>. At the very beginning of the cell culture era, the cultures were mostly carried out under an adherent condition, which is called the 2D monolayer cell culture model<sup>[18]</sup>. However, the *in vivo* environment provides cell-cell and cell-extracellular matrix

(ECM) interactions in a 3D structure<sup>[19]</sup>, and the 2D monolayer cells might not accurately mimic the actual 3D environment of the *in vivo* cells. The clear evidence was the experiments using the immortalized tumor cell lines grown in the 2D culture systems resulted a 95% drug response failure rate in human subjects. It indicated that the 2D cell culture model could be an inaccurate model for drug development<sup>[20]</sup>. Therefore, the drug discovery and validation processes should integrate both 2D cell culture screening and animal study, complying with the standard procedure prior to clinical trials. Nonetheless, the data collected from the 2D cell system are often misleading for *in vivo* responses as previously mentioned, and the animal models are expensive, time consuming, controversial with ethical dilemmas, and inconsistent due to species differences<sup>[21]</sup>. The development of novel models is needed to resolve the inconsistency between the 2D cell culture systems, animal models, and clinical trials. Therefore, the 3D *in vitro* cell culture platforms could be the potential candidate<sup>[22]</sup>.

## TWO-DIMENSIONAL VS THREE-DIMENSIONAL CELL CULTURE MODELS

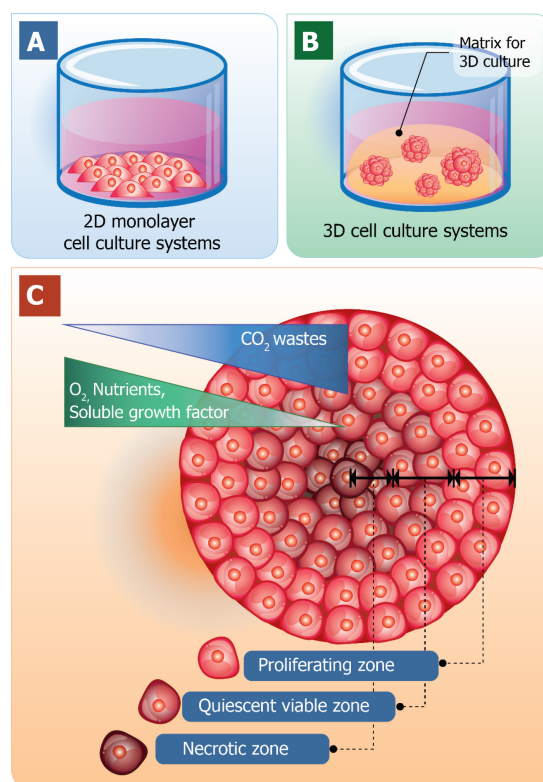
Cell culture is the most basic yet essential process for preclinical drug discovery. Even though the unreliable flaws of monolayer cell culture have been pointed out, 2D cell culture models are still the first option that scientists turn to due to its simplicity in order to obtain preliminary results. Nevertheless, 2D cultures may not sufficiently mimic the physiological conditions in a 3D network where *in vivo* cells reside. Therefore, deceptive data from 2D cell culture model often leads to the irrelevant prediction of drug efficacy and toxicity and finally causes the failure in drug validation and approval processes<sup>[23]</sup>.

One obvious advantage of cell culturing in a 3D manner over 2D cell culture is that it contributes the expression of ECM components as well as the interactions between cell-cell and cell-matrix. The characteristics of 3D cell cultures and the traditional 2D cell culture models are shown in [Figure 1](#). The traditional 2D cell cultures result in a monolayer cell expanding on a flat surface of glass or commercial polystyrene plastic flasks for tissue culture ([Figure 1A](#)). In contrast, 3D cell cultures promote cells to form 3D spheroids by utilizing an ECM material ([Figure 1B](#)). Cell spheroid is the important characteristic that resembles *in vivo* cells for further replicating cell differentiation, proliferation, and function *in vitro*. Thus, 3D spheroid culture is considered an improved model for predictive *in vitro* cell-based assays and may deliver high physiological relevance for preclinical drug discovery, especially in cancer/stem cell research.

Generally, cells of multicellular organisms capable of forming tissues are in 3D arrangements with complex interactions within cell populations and also between cells and environments. With the dynamics of nutrient and chemical transport between cells in the *in vivo* conditions, cells are homeostatically provided with a relatively constant supply of nutrients with the minimized level of waste products due to the activity of the circulatory system. Therefore, the 3D arrangements of cells are the major employment for 3D cell culture with the optimal spatial organization of cells in the culture environment to be considered<sup>[24-26]</sup>. When cells are grown in 3D culture systems, cells also induce the formation of aggregates or spheroids within matrix or the culture medium. Even though with cell-cell interactions and cell-matrix interactions are not yet perfectly mimicked in a spheroid culture model, they are close enough to induce the morphological alteration of cells to not be relatively flat but closely resemble its natural shape in the body ([Figure 1C](#)).

Furthermore, within the spheroid structure, various stages of cells are established, including proliferating, quiescent, apoptotic, hypoxic, and necrotic cells due to the gradients of nutrients and oxygen level<sup>[27,28]</sup>. The proliferating cells could be found mainly at the outer layer of the spheroids because they are exposed to sufficient amounts of nutrients from the culture medium<sup>[29,30]</sup>. Cells at the core of spheroids tend to be in quiescent or hypoxic states because they are faced with the lack of oxygen, growth factors, and nutrients<sup>[31]</sup>. The cellular heterogeneity within a cell population is quite relevant to *in vivo* tissues, organs, and even tumors. At this point, due to cell morphology, interactions, and heterogeneity of cells grown in 3D culture, it is reasonable to hypothesize that the cellular processes of these cells are also applicable<sup>[32]</sup>.

Comparisons of 3D spheroid culture models and 2D monolayer cell culture models were shown in [Table 1](#). Numerous studies have proven the differences in cell viability, morphology, proliferation, differentiation, cellular responses to stimuli, cell-cell communication, cell stiffness, migrant and invasive properties of tumor cells into surrounding tissues, angiogenesis stimulation and immune system evasion, drug



**Figure 1 Schematic diagrams of the traditional two-dimensional monolayer cell culture and three-dimensional cell culture systems.** A: Traditional two-dimensional monolayer cell culture; B: Three-dimensional cell culture systems; C: The structure of three-dimensional spheroid with different zones of cells with the models of oxygenation, nutrition, and CO<sub>2</sub> removal. Three-dimensional spheroid from inside to outside. The regions are necrotic zone (innermost), quiescent viable cell zone (middle), and proliferating zone (outermost).

responses, transcriptional and translational gene expression, general cell function, and *in vivo* relevance between cells cultured in 2D and 3D models. For example, cell polarization could be more accurately depicted in 3D cell culture models unlike in 2D models in which the cells can only be partially polarized. Moreover, greater stability and longer lifespans were found in 3D culture models; 3D spheroids can be cultured up to 3 wk, whereas 2D monolayer culture can last for less than a week due to the limitation of cell confluence<sup>[33]</sup>. Therefore, 3D cell culture models might be more appropriate for handling the long-term experiments and for determining long-term effects of the drug on cellular responses.

## THREE-DIMENSIONAL CELL CULTURE TECHNOLOGIES

Because the advantages of 3D culture systems have become widely realized, there have been many studies intensively focused on the development and optimization of 3D cell culture technologies. With the integration of the recent advances in cell biology, microfabrication techniques, and tissue engineering, a wide range of 3D cell culture platforms were constructed, including multicellular spheroid formation (liquid overlay culture and hanging drop method), hydrogel-based culture, bioreactor-based culture, bio-printing, and scaffold-based culture. A summary of the advantages, disadvantages, and research stage of each model are shown in Table 2. Although each 3D culture technique/platform are different in both principle and protocol, the same objectives that they share are to provide the similar features of *in vivo* cells in morphological, functional, and microenvironmental aspects. This section aims to briefly describe the key features of each technique.

### Multicellular spheroids formation

**Liquid overlay culture:** Liquid overlay culture could be the simplest of all 3D cell culture Techniques (Figure 2A). To create 3D culture models, the surface for cell culture is covered with a thin film of inert substrates, such as agar<sup>[34]</sup>, agarose<sup>[35]</sup>, or matrigel<sup>[36]</sup>. By preventing cell adhesion on the surface and providing the artificial matrix, liquid overlay culture easily promotes the aggregation of cells to become

**Table 1 Differences in two-dimensional vs three-dimensional cell culture models**

Type of culture	2D	3D	Ref.
<i>In vivo</i> -like	Do not mimic the natural structure of the tissue or tumor mass	<i>In vivo</i> tissues and organs are in 3D form	Takai <i>et al</i> <sup>[102]</sup>
Proliferation	Tumor cells were grown in monolayer faster than in 3D spheroids	Similar to the situation <i>in vivo</i>	Lv <i>et al</i> <sup>[111]</sup>
Polarity	Partial polarization	More accurate depiction of cell polarization	Antoni <i>et al</i> <sup>[18]</sup>
Cell morphology	Sheet-like, flat, and stretched cells in monolayer	Form aggregate/spheroid structures	Breslin <i>et al</i> <sup>[103]</sup>
Stiffness	High stiffness (approximately $3 \times 10^9$ Pa)	Low stiffness ( $> 4000$ Pa)	Krausz <i>et al</i> <sup>[104]</sup>
Cell-cell interaction	Limited cell-cell and cell-extracellular matrix interactions and no “niches”	<i>In vivo</i> -like, proper interactions of cell-cell and cell-extracellular matrix, environmental “niches” are created	Lv <i>et al</i> <sup>[111]</sup> , Kang <i>et al</i> <sup>[105]</sup>
Gene/protein expression	Changes in gene expression, mRNA splicing, topology, and biochemistry of cells, often display differential gene/protein levels compared with <i>in vivo</i> models	Expression of genes and proteins <i>in vivo</i> is relevantly presented in 3D models	Bingel <i>et al</i> <sup>[92]</sup> , Ravi <i>et al</i> <sup>[106]</sup>
Drug responses	Lack of correlation between 2D monolayer cell cultures and human tumors in drug testing.	Tumor cells in 3D culture showed drug resistance patterns similar to those observed in patients	Lv <i>et al</i> <sup>[111]</sup> , Bingel <i>et al</i> <sup>[92]</sup>
The culture formation	From minutes to a few hours	From a few hours to a few days	Dai <i>et al</i> <sup>[33]</sup>
Quality of culture	High performance, reproducibility, long-term culture, easy to interpret, simplicity of culture	Worse performance and reproducibility, difficult to interpret, cultures are more difficult to carry out	Hickman <i>et al</i> <sup>[107]</sup>
Access to essential compounds	Unlimited access to oxygen, nutrients, metabolites, and signaling molecules (in contrast to <i>in vivo</i> )	Variable access to oxygen, nutrients, metabolites, and signaling molecules (similar to <i>in vivo</i> )	Pampaloni <i>et al</i> <sup>[108]</sup> , Senkowski <i>et al</i> <sup>[30]</sup>
Cost during maintenance of a culture	Cheap, commercially available tests and media	More expensive, more time-consuming, fewer commercially available tests	Friedrich <i>et al</i> <sup>[35]</sup>

spheroids<sup>[37]</sup>. This technique is cost-effective and highly reproducible without requirement of any specific equipment<sup>[38]</sup>. Different cell types can be cocultured with this technique<sup>[39]</sup>. However, the number and size of formed spheroids are difficult to monitor<sup>[40]</sup>. Recently, ultra-low attachment plates have been developed and commercialized for the liquid overlay technique. Such plates contain individual wells with a layer of hydrophilic polymer on the surface to overcome the requirement for manual coating, which prevents cell attachment. The specifically designed plates exhibit the capability to produce one spheroid per well and is favorable enough for medium-throughput applications<sup>[41]</sup>.

**Hanging drop technique:** The hanging drop technique for 3D spheroid production was introduced by Johannes Holtfreter in 1944 for cultivating embryonic stem cells. The technique later became the foundation of scaffold-free 3D culture models capable of multicellular spheroid generation. Resulting spheroids could be generated with consistent size and shape controlled by adjusting the density of cell seeding. As few as 50 cells up to 15000 cells could be varied to obtain the desirable size of spheroids<sup>[42]</sup>. In the very beginning, the hanging drop technique was carried out in the petri dish lid, by dropping a small volume of cell suspension (15-30  $\mu$ L) with a specific cell density onto the lid. Then, the lid was subsequently inverted and aliquots of cell suspension turned into hanging drops without dripping due to surface tension. Consequently, cells were forced to accumulate at the bottom tip of the drop, at the liquid-air interface, and further aggregate and proliferate until spheroids were formed (Figure 2B). Recently, bioassay dishes have been used in place of petri dishes for more well-controlled experiments to facilitate the maintenance of moisture levels of the culture system, so that cell culture can be done in the same manner of standard cell culture procedures.

The hanging drop technique is relatively simple and applicable for numerous cell lines, and its reproducibility can be almost 100% for generating one 3D spheroid per drop<sup>[42]</sup>. The 3D spheroid obtained from this technique tends to be tightly packed

**Table 2 Proposed advantages, disadvantages, and research stage of different three-dimensional cell culture methods**

Techniques	Advantages	Disadvantages	Research stage
Liquid overlay cultures and Hanging drops	(1) Easy-to-use protocol; (2) No added materials; (3) Consistent spheroid formation; control over size Co-culture ability; (4) Transparent; (5) High reproducibility; (6) Inexpensive; (7) Easy to image/harvest samples	(1) No support or porosity; (2) Limited flexibility; (3) Limited spheroid size; (4) Heterogeneity of cell lineage; (5) Lack of matrix interaction	(1) Basic research; (2) Drug discovery; (3) Personalized medicine
Hydrogel	(1) Large variety of natural or synthetic materials; (2) Customizable; (3) Co-culture possible; (4) Inexpensive; (5) High reproducibility	(1) Gelling mechanism; (2) Gel-to-gel variation and structural changes over time; (3) Undefined constituents in natural gels; (4) May not be transparent	(1) Basic research; (2) Drug discovery
Bioreactors	(1) Simple to culture cells; (2) Large-scale production easily achievable; (3) Motion of culture assists nutrient transport; (4) Spheroids produced are easily accessible	(1) Specialized equipment required; (2) No control over cell number/size of spheroid; (3) Cells possibly exposed to shear force in spinner flasks (may be problematic for sensitive cells)	(1) Basic research; (2) Tissue engineering; (3) Cell expansion
Scaffolds	(1) Large variety of materials possible for desired properties; (2) Customizable; (3) Co-cultures possible; (4) Medium cost	(1) Possible scaffold-to-scaffold variation; (2) May not be transparent; (3) Cell removal may be difficult	(1) Basic research; (2) Drug screening; (3) Drug discovery; (4) Cell expansion
3D bioprinting	(1) Custom-made architecture; (2) Chemical, physical gradients; (3) High-throughput production; (4) Co-culture ability	(1) Require expensive 3D bioprinting machine; (2) Challenges with cells/materials	(1) Cancer pathology; (2) Anticancer drug screening; (3) Cancer treatment; (4) Tissue engineering

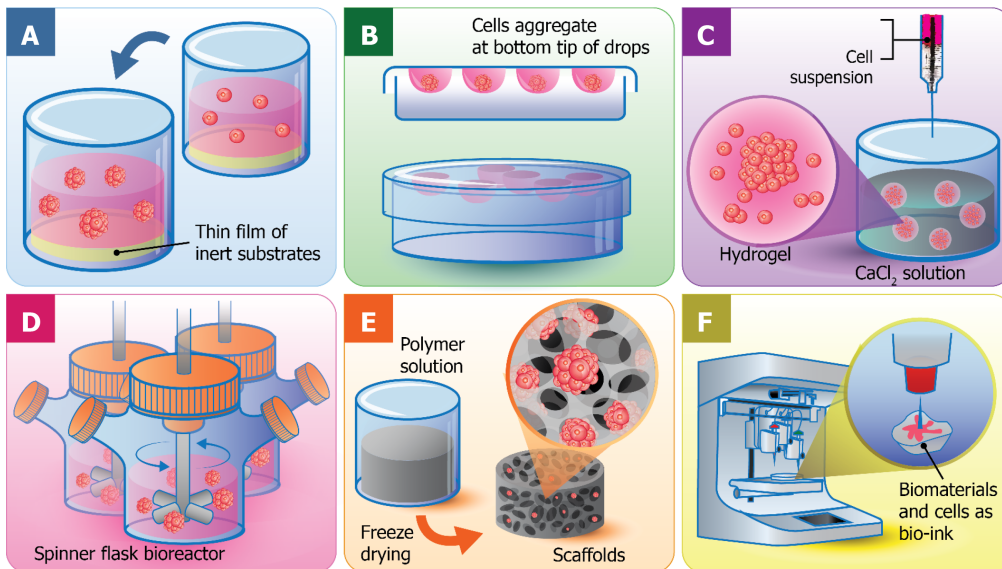
Modified from Breslin *et al*<sup>[64]</sup>; Fang *et al*<sup>[47]</sup>; Leong *et al*<sup>[109]</sup>.

rather than aggregated loosely, and low variability in sizes were observed. Kelm *et al*<sup>[42]</sup> reported that 3D spheroids exhibited patho/physiologically relevance because their structures were highly organized along with their produced ECM and turned to be a 'tissue-like' structure. As this technique is based on the tendency of cells to aggregate to each other spontaneously instead of depending on the provided matrices or scaffolds, the problematic concerns regarding the effects from 3D structure formation are reduced. However, the undeniable drawback of the hanging drop technique is the limited volume of the cell suspension. Only up to 50  $\mu$ L of suspension, including the testing medium, can be accommodated onto the upside down surface unless dripping occurs as the surface tension is not enough to keep liquids attached on the surface<sup>[43]</sup>. Another limitation is the difficulty in changing culture medium during cultivation without disturbing the spheroids<sup>[31]</sup>.

**Hydrogels:** Hydrogels are the networks of cross-linked polymeric material, which are generally composed of hydrophilic polymers with high water content (Figure 2C)<sup>[44]</sup>. There are the swollen structures or microspheres integrated within the network for cell encapsulation and the circulation of nutrients and cellular waste in and out of the hydrogels<sup>[45]</sup>. Additionally, gels exhibit a soft tissue-like stiffness to potentially resemble natural ECM because they are made from mixtures of natural polymers such as collagen, and alginate, two of the most used substrates in 3D cell culture history<sup>[46]</sup>.

The most common use of hydrogels is to be combined with a reconstituted basement membrane preparation extracted from mouse sarcoma, which has been commercialized by the Matrigel trademark (Corning Life Sciences, Tewksbury, MA, United States). Even though such commercialized hydrogels are rich in ECM proteins, they also possessed some drawbacks, including the deficiency in gelation kinetic control, the undefined and uncontrollable polymer composition, and lack of mechanical integrity. Lot-to-lot variability due to manufacturing mistakes and poorly defined composition also cause difficulty to determine the exact responses of cells to some particular stimuli<sup>[47]</sup>.

Generally, hydrogels are fabricated based on both synthetic and natural polymers, which are water-absorbing, hydrophilic, and highly flexible materials. With the well-controlled fabrication processes and well-defined material composition, hydrogels have become the prominent materials for 3D scaffold development. Because of their structural similarities to natural ECM, they are favorable for *in vivo* chemical delivery in a noninvasive manner<sup>[44]</sup>. A number of synthetic and natural materials can be incorporated into hydrogel formation, such as hyaluronic acids, polyethylene



**Figure 2** Different techniques used for three-dimensional cell cultures. These techniques include: A: Liquid overlay; B: Hanging drop; C: Hydrogel embedding; D: Spinner flask bioreactor; E: Scaffold; F: Three-dimensional bioprinting.

glycol<sup>[48]</sup>, collagen, gelatin, fibrin, alginate, and agarose<sup>[49]</sup>. However, the natural hydrogels, like Matrigel and alginate gel, are considered to be more appropriate cell-encapsulated materials due to the great biocompatibility and mild gelling conditions.

The hydrogel technique for cell culture in a calcium alginate hydrogel was first developed by Lim *et al.*<sup>[50]</sup> by mixing the cells with the alginate solution, then cross-linking and forming the hydrogel-based microspheres in an isotonic  $\text{CaCl}_2$  solution (Figure 2C). The alginate hydrogels are very limited for cell adhesion, which is an advantage for cell encapsulation applications<sup>[51]</sup> that provide rapid, nontoxic, and versatile immobilization of cells within polymeric networks. In addition, the creation of artificial organs was also consolidated with encapsulating cells or tissue for the treatment of disease. The most well-known example was an artificial pancreas to be used in diabetes therapy<sup>[45]</sup>.

The 3D cell culture can also be carried out in hydrogels and can be integrated with other cell culture models such as cell spheroid cultures, scaffold-based cell cultures, and microchip-based cell cultures<sup>[52]</sup>. Hydrogels are one potential technique to be used for 3D *in vitro* technology due to their biocompatibility, sufficient water content, and ECM-like mechanical properties<sup>[53]</sup>. Although hydrogels were not popularly applied to the field of drug screening, they have been widely used for the development of tissue engineering by mimicking cartilage, vascular, bone, and other tissues by mixing particular cells to hydrogel precursors before the gelling process in which cells are distributed evenly and homogeneously throughout the gels.

One reported case was the engineered cardiac tissues obtained from the neonatal rat cardiac myocyte culture in collagen hydrogels that were used for cyclic mechanical stretch research<sup>[54]</sup>. Hydrogels also facilitate the delivery of soluble or signaling molecules to cells and providing the supportive surroundings for cell growth and function. For example, transforming growth factor  $\beta$  was infused into polyethylene glycol hydrogels to govern the function of smooth muscle cells. In a similar manner, bone morphogenetic protein was covalently attached to alginate hydrogels to govern osteoblast migration and calcification<sup>[55]</sup>. Despite a variety of hydrogel type applications, Ca-alginate hydrogels are surely a potent candidate system for the delivery of cells to the infarcted heart because they are nontoxic, nonimmunogenic, do not facilitate pathogen transfer, and allow good exchange of waste products and nutrients<sup>[56,57]</sup>. Ca-alginate hydrogels were primarily implanted into the heart and shown not to induce harmful responses such as thrombosis<sup>[56]</sup> or fibrosis<sup>[58]</sup>. The gradual degradation, resulting from the dispersal of calcium crosslinks<sup>[59]</sup>, generated nontoxic alginate polysaccharide degradation products, which can be excreted *via* urinary systems<sup>[60]</sup>. However, besides a number of advantages of hydrogels, the disadvantages of hydrogel are still present and should not be disregarded. The uncertainty and complexity in composition influenced by gelling mechanism may cause undesirable and nonspecific cellular responses. Additionally, pH based gelling mechanisms can negatively affect sensitive cells<sup>[52]</sup>.

**Bioreactors:** Because the impact of 3D cell culture models as an appropriate *in vitro*

laboratory platform for the discovery of therapeutics and anticancer agents have been concerned and drawn the attention of scientists, the crucial following step to cope with the increasing demand is the upscale 3D culture system from the laboratory to the industrial level. Bioreactors became the solution for great spheroid formation with a precise control system and guaranteed reproducibility<sup>[61]</sup>. With specifically designed 3D culture approaches, bioreactors have been adapted in many ways. For example, scaffolds have been added to the large cell culture chambers for high volume cell production.

Normally, a bioreactor for 3D spheroid production can be loosely classified into four categories: (1) Spinner flask bioreactors (Figure 2D); (2) Rotational culture systems; (3) Perfusion bioreactors; and (4) Mechanical force systems<sup>[18,62]</sup>. The general principle behind the bioreactor-based 3D culture systems is that a cell suspension with the optimal cell density is filled into the chamber with continuous agitation, either by gently stirring, rotating the chamber, or perfusing culture media through a scaffold using a pump system. Bioreactors are equipped with media flowing systems to provide the nutrient circulation, metabolic waste expulsion, and homogeneity of the physical and chemical factors within the bioreactors. Therefore, bioreactor-based cell culture models are appropriate for intensive cell expansion and large-scale biomolecule production, such as antibodies or growth factors.

Although bioreactors are labor-intensive and capable of producing a large number of spheroids<sup>[63]</sup>, the produced spheroids are still distributed heterogeneously in size and number of cell population<sup>[31]</sup>. Therefore, a manual spheroid selection is required for later replating onto a dish, if the spheroid size needs to be controlled<sup>[64]</sup>. Even though spheroid generation *via* bioreactors requires expensive instruments<sup>[65]</sup> and high quality/quantity of culture medium, the bioreactors can still provide greater advantages at the industrial level over other techniques<sup>[66]</sup>.

**Scaffolds:** The 3D scaffolds are described as the synthetic 3D structures that are constructed from a wide-range of materials and possess different porosities, permeability, surface chemistries, and mechanical characteristics. They are mainly designed to mimic the *in vivo* ECM of the specific tissues for each particular cell type. The 3D scaffold-based cell culture models have been applied to drug screening<sup>[11]</sup>, drug discovery<sup>[47]</sup>, and investigation of cell behaviors<sup>[47]</sup>. The 3D scaffolds are meant to be porous, biocompatible, and biodegradable, which provides appropriate microenvironments where cells naturally reside, supporting mechanical, physical, and biochemical requirements for cell growth and function<sup>[28]</sup>. Several biopolymers are used to generate porous scaffolds, which include collagen<sup>[11]</sup>, gelatin<sup>[67]</sup>, silk<sup>[68]</sup>, chitosan<sup>[28]</sup>, and alginate<sup>[28,69]</sup>. As such, various techniques have been used for the fabrication of scaffolds, such as gas foaming, freeze-drying, phase separation, solvent casting, and particulate leaching. Each technique results in different porosities, pore sizes and shapes, scaffold materials, and features. Among them, freeze-drying is considered the easiest technique to fabricate porous scaffolds<sup>[70]</sup>.

Sequentially, natural or synthetic materials are polymerized, frozen, and freeze-dried. The frozen water embedded in the polymers is sublimated directly without going through the liquid phase resulting in a porous structure formation<sup>[71]</sup>. The freeze-drying technique for the fabrication of porous biodegradable scaffolds from polylactic and polyglycolic copolymer was first developed by Whang *et al*<sup>[72]</sup>. With such technique, the porosity and pore dimension of the scaffolds are varied depending on the various parameters such as the ratio of water and polymers and also the viscosity of polymer solution<sup>[73]</sup>. The porous alginate-based scaffolds can also be easily manufactured by a simple freeze-drying process (Figure 2E). However, it is difficult to generate pores with uniform diameter but can partially be controlled by varying the freezing temperature<sup>[74]</sup>. Another advantage of this technique is that no rinsing steps are required because dispersed water and polymer solution are removed directly *via* sublimation<sup>[72]</sup>. Additionally, the biodegradation rates of scaffolds are strongly dependent on polymer components and molecular weight<sup>[75]</sup>.

To date, Ca-alginate copolymer is one of the most prominent materials for freeze-dried scaffolds. Several studies have used 3D Ca-alginate scaffolds as a cell culture platform for screening and efficacy testing of anticancer drugs and tissue engineering. 3D Ca-alginate scaffolds were proposed to allow more realistic cell phenomena, similar to those occurring *in vivo* during cancer formation and progression. Chen *et al*<sup>[69]</sup> developed a 3D porous Ca-alginate scaffold cell culture system combined with the functionally-closed process bioreactor to form bone-like tissue within the closely mimicked *in vivo* environments. The Ca-alginate scaffolds were reported to support the growth and differentiation of human bone cell clusters, along with the upregulation of bone-related gene expression. Florczyk *et al*<sup>[28]</sup> developed chitosan-alginate scaffolds using the freeze-drying technique to study cancer stem cells transient behavior *in vitro*. They found that 3D scaffold-based cultures of prostate,

liver, and breast cancer cells exhibited reduced proliferation and tumor spheroid formation and increased expression of cancer stem-like cell associated mark genes (CD133 and NANOG) compared to 2D cell culture. Chitosan-alginate scaffolds were also observed to allow the efficient seeding of human umbilical cord mesenchymal stem cells, promoting the inhabitability of cells throughout the whole volume of the scaffold, which reflected good adhesion and proliferation<sup>[76]</sup>.

**3D bioprinting:** 3D printing technique is a recently developed technology that, in general, is referred to as the construction of customized 3D structures under computational control in which materials are printed out, solidified, and connected together<sup>[51]</sup>. 3D printing takes part in a wide-range application, including prototypic and industrial manufacturing, architecture, 3D art and design, and importantly, tissue engineering and regenerative medicine<sup>[77]</sup>. The 3D tissue printing that the biological constructs composed of cells and biomaterials are printed in a small dimension, ranging from several millimeters to a centimeter. The term is so called because the biocompatible materials, cells and supporting components are used to form a variety of 3D formats instead of any synthetic materials. Therefore, cell function and viability can be sustained within the printed constructs (Figure 2F)<sup>[77]</sup>. Various 3D bioprinting platforms can already generate vascular-like tubes<sup>[78]</sup>, kidney<sup>[77]</sup>, cartilage<sup>[79]</sup>, artificial skin<sup>[80]</sup>, and a wide range of stem cells including tissue constructs<sup>[81]</sup>. 3D bioprinting is needed to precisely deposit cells, biomaterials, and biomolecules layer-by layer by computer-aided equipment and software, which has been possibly constructed by integration of modern science and technology knowledge, including cell biology, engineering, material science, and computer science<sup>[82]</sup>.

By using alginate as the main biomaterial in a bio-ink, Zhao *et al*<sup>[83]</sup> studied the pathogenesis of cervical cancer using the developed cervical tumor model. Alginate, together with gelatin and fibrinogen, was mixed with HeLa cells to initiate gelation prior to printing and resemble the ECM components. The printed constructs were later strengthened by the addition of a calcium chloride solution. Printed HeLa cells subsequently formed spheroids that exhibited more resistance to paclitaxel than 2D monolayer HeLa cells. Correspondingly, Dai *et al*<sup>[33]</sup> generated 3D bioprinted constructs of glioma stem cells using modified gelatin/alginate/fibrinogen biomaterials printed glioma stem cells. They could survive, proliferate, maintain the inherent characteristics of cancer stem cells, and exhibit differentiation and vascularization potential. In addition, their resistance against temozolomide were higher than those in the 2D cell culture model.

Besides the ability to generate geometric constructs containing viable cells, the 3D bioprinting technique also facilitated high throughput applications with precise reproducibility<sup>[84]</sup>. However, the main concerns are the requirement of the expensive 3D bioprinting machine and the negative effects on sensitive cells during the printing process. Cells could possibly be damaged due to osmotic, thermal, and mechanical stresses.

## APPLICATION OF 3D CELL CULTURE

Recently, the 3D culture models were developed in a specific way to suit each particular cell type rather than to be versatile of different physiological requirements. Despite the great number of reported 3D culture-based studies, they have not been optimized or validated for realistic applications. Advances have been made for cancer and stem cell modeling so far, and prominent studies applied with 3D cell culture systems are summarized in Table 3.

### Cancer modeling

Cancer epithelial cells cultured in 3D culture systems were reported to be altered in shape and lose their polarity. Such features are ordinarily found in cancer progression in an *in vivo* environment<sup>[22]</sup>. Cell proliferation, gene/protein expression, and drug sensitivity of 3D cancer cell models are also more illustrative of *in vivo* cancer cells compared to those cultured as a monolayer<sup>[32]</sup>. Therefore, to obtain more relevant data, several studies have used 3D cell culture systems as a cancer model.

Peela *et al*<sup>[85]</sup> revealed novel genetic dependencies linked with breast cancer progression in 3D MCF10 human mammary gland cells. It was found that the alteration in both genetic information and the pattern of gene expression can be disclosed when cells were grown in 3D conditions similar to those *in vivo*. This induced MCF10 progression model therefore represented a suitable system to dissect the potential biomarkers as well as to evaluate therapeutic targets involved in human breast cancer progression.

Zhu *et al*<sup>[86]</sup> employed the stereolithographic 3D bioprinter with a newly developed

**Table 3 Examples of three-dimensional research systems utilized for cancer and stem cell cancer studies**

Application/platform	Cells type	3D model	Culture systems/matrix	Results	Ref.
Drug-screening	Breast cancer cells (BT-549, BT-474 and T-47D)	Comparison of 2D- and 3D-culture models as drug-testing platforms in breast cancer	Spheroid formation in 3D-culture plates	Three breast cancer cell lines developed dense multicellular spheroids in 3D-culture and showed greater resistance to paclitaxel and doxorubicin compared to the 2D-cultured cells	Imamura <i>et al</i> <sup>[89]</sup>
Metastasis studies and assessing drug sensitivity	Breast cancer cells (MDA-MB-231 and MCF-7)	Breast cancer bone metastasis	3D bioprinting hydrogel	Breast cancer cells exhibited spheroid morphology and migratory characteristics, then co-culture of breast tumor cells with bone marrow MSCs increased the formation of spheroid clusters	Zhu <i>et al</i> <sup>[86]</sup>
Cancer cell behavior	Breast cancer cells (MCF10)	Breast cancer progression	3D spheroid cultures used U-bottom ultra-low attachment plates	Genetic dependencies can be uncovered when cells are grown in 3D conditions similar to <i>in vivo</i>	Peela <i>et al</i> <sup>[85]</sup>
Drug-screening	Human colon cancer cells (HCT116)	Compared gene expression in 2D and 3D systems and identification of context-dependent drug responses	3D spheroid cultures used lowattachment plate (Corning, Amsterdam, The Netherlands)	3D spheroids increased expression of genes involved in response to hypoxia and decreased expression of genes involved in cell-cycle progression when compared with monolayer profiles	Senkowski <i>et al</i> <sup>[30]</sup>
GBM biology, anti-GBM drug screening	Human glioblastoma cells (U87)	Compared gene expression in 2D and 3D systems	3D PLA porous scaffolds	GBM cells in 3D PLA culture expressed, 8117 and 3060 genes were upregulated and downregulated, respectively, compared to 2D cell culture conditions. Further, KEGG pathway analysis showed the upregulated genes were mainly enriched in PPAR and PI3K-Akt signaling pathways while the downregulated genes were enriched mainly in metabolism, ECM, and TGF- $\beta$ pathways	Ma <i>et al</i> <sup>[87]</sup>
Cancer and tumor cell biology	Human glioblastoma (U-251)	Compared gene and protein expression in 2D and 3D systems	ESPS scaffolds coated with laminin	The results suggested the influence of 3D context on integrin expression upregulation of the laminin-binding integrins alpha 6 and beta 4	Ma <i>et al</i> <sup>[91]</sup>
Cancer and tumor cell biology	Human glioblastoma (U-251) cells	Compared drug-sensitivity in 2D and 3D systems	3D bioprinting of gelatin/alginate/fibrinogen hydrogel	3D bioprinted glioma stem cells were more resistant to temozolomide than 2D monolayer model at temozolomide concentrations of 400-1600 $\mu\text{g/mL}$	Dai <i>et al</i> <sup>[33]</sup>

Cancer and tumor cell biology	Human glioblastoma (U-251)	Anti-cancer drug screening	3D collagen scaffold	Glioma cells in 3D collagen scaffold culture enhanced resistance to chemotherapeutic alkylating agents with a much higher proportion of glioma stem cells and upregulation of MGMT	Ly <i>et al</i> <sup>[11]</sup>
Cancer and tumor cell biology, development of new therapies and detection of cardiotoxicity	iPSC-derived human cardiomyocytes	Cardiac microtissues	Hanging drops	A 3D culture using iPSC-derived human CMs provided an organoid human-based cellular platform that recapitulated vital cardiac functionality	Beauchamp <i>et al</i> <sup>[94]</sup>
Tissue engineering and toxicity assessment	Human hepatoblastoma (HepG2/C3A)	A liver-on-a-chip platform for long-term culture of 3D human HepG2/C3A spheroids for drug toxicity assessment	Bioprinting of hepatic constructs containing 3D hepatic spheroids	Hepatic construct by 3D bioprinting were functional during the 30 d culture period and responded to acetaminophen that induced a toxic	Bhise <i>et al</i> <sup>[98]</sup>
Brain diseases	Human embryonic stem cells (HUES66), C57	3D neural tissues for use as tractable models of brain diseases	3D hydrogels	3D cocultures of neuronal and astrocytic cells can change expression patterns so that they correlate with specific brain regions and developmental stages	Tekin <i>et al</i> <sup>[101]</sup>
Cancer and tumor cell biology, drug screening	Human neuroblastoma cell lines BE(2)-C (ECACC), IMR-32 (DSMZ)	Compared gene expression profiles in 2D and 3D systems and tumor tissue	Polymeric scaffolds and bioreactor systems	The autophagy-controlling transcription factors, such as TFEB and FOXO3, are upregulated in tumors, and 3D-grown cells have increased expression compared with cells grown in 2D conditions	Bingel <i>et al</i> <sup>[92]</sup>
Cancer and tumor cell biology, neurodegenerative diseases	DPSCs	Differentiation to retinal ganglion-like cells	3D fibrin hydrogel	3D network can mimic the natural environment of retinal cells	Roozafzoon <i>et al</i> <sup>[95]</sup>
Cardiovascular disease	hiPSCs	Cardiomyocytes and endothelial cells, co-differentiated from human pluripotent stem cells	V-bottom 96 well microplates	Human cardiac microtissues were generated in complex 3D structures and differentiation of human pluripotent stem cells into cardiomyocytes and endothelial cells that expressed cardiac markers also present in primary cardiac microvasculature	Giacomelli <i>et al</i> <sup>[110]</sup>
Bioartificial liver support devices, drug screening and	hiPSCs	Differentiation of hiPSCs into hepatocytes	Nanofiber hydrogel 3D scaffold	3D hydrogel culture conditions promote the differentiation of hiPSCs into hepatocytes	Luo <i>et al</i> <sup>[100]</sup>
Ovarian cancer biology, drug sensitivity	Ovarian cancer cell lines (A2780 and OVCAR3)	Compared drug-sensitivity in 2D and 3D systems	Hanging drop	3D tumor spheroids demonstrated greater resistance to cisplatin chemotherapy compared to 2D cultures	Raghavan <i>et al</i> <sup>[90]</sup>
Pathogenesis of prostate cancer, prostate cancer therapy	Prostate cancer cell lines (PC3 and LNCaP)	Simulation of prostate cancer bone metastases	Collagen-based scaffolds	The two cell lines in 3D present increased resistance to docetaxel	Fitzgerald <i>et al</i> <sup>[111]</sup>
Radiosensitivity of cancer cells	Human lung adenocarcinoma cell line (A549)	The metabolic response of lung cancer cells to ionizing radiation	Hydrogels	3D model can help regulate the exposure of oxygen to subpopulations of cells in a tissue-like construct either before or after irradiation	Simon <i>et al</i> <sup>[112]</sup>

Regenerative medicine, drug screening, and potentially disease modeling	HUVECs	Endothelial myocardium construction	3D bioprinting	This technique could be translated to human cardiomyocytes derived from iPSCs to construct endothelial human myocardium	Zhang <i>et al</i> <sup>[99]</sup>
Cancer cell biology, studying and developing therapies against cancer stem cells	Hepatocellular carcinoma (SK-Hep-1), prostate cancer (TRAMP-C2) and breast cancer (MDA-MB-231)	Compared cancer morphogenesis and gene expression in 2D and 3D systems	CA scaffolds	The three cell lines in 3D porous CA scaffolds promote cancer stem-like cell enrichment and increased expression of cancer stem cells genes (CD133 and NANOG)	Florczyk <i>et al</i> <sup>[28]</sup>

2D: Two-dimensional; 3D: Three-dimensional; DPSCs: Dental pulp stem cells; iPSC: Induced pluripotent stem cells; hiPSC: Human induced pluripotent stem cells; HUVECs: Human umbilical vein endothelial cells; CA: Chitosan-alginate; MSC: Mesenchymal stem cell; PLA: Polylactic acid; ESFS: Electrospun polystyrene; TGF- $\beta$ : Transforming growth factor  $\beta$ ; KEGG: Kyoto Encyclopedia of Genes and Genomes; GBM: Glioblastoma multiforme; ECM: Extracellular matrix; CM: Cardiomyocyte.

nano-ink to construct hydrogel-based culture systems infused with hydroxyapatite nanoparticles. This system provided a bone-specific environment for assessing the invasive properties of breast cancer to bone. The breast cancer cultured in the 3D culture system developed spheroid characteristics with a high migratory ability especially when they were cocultured with bone marrow mesenchymal stem cells. The breast cancer cell spheroids also exhibited higher anticancer drug resistance compared with the 2D culture cells. The evidence suggested that the 3D bone matrix mimicked tumor/bone microenvironments serving as a tool for exploring cancer metastasis and assessing anticancer drug sensitivity.

In another report, Senkowski *et al*<sup>[30]</sup> demonstrated gene expression profiling of 3D multicellular tumor spheroids compared with the 2D monolayer cells. The alteration of gene expression was found to be the upregulation of genes involved in response to hypoxia, and the downregulation of genes involved in cell cycle progression. Further, the mevalonate pathway was upregulated in quiescent cells of the 3D spheroids during oxidative phosphorylation inhibition, which were correlated with the viable deficiency of quiescent spheroids when they were treated with oxidative phosphorylation inhibitors and mevalonate pathway inhibitors. This suggested the context dependence of anticancer drug responses of the 3D tumor spheroids.

Recently, the genome of 3D glioblastoma multiforme (GBM) cells in polylactic acid porous scaffolds were compared to the genome of GBM cells in 2D cell culture conditions. It was found that the 14-d 3D GBM cells upregulated 8117 genes and downregulated 3060 genes compared to the 2D cell culture conditions<sup>[87]</sup>. The Kyoto Encyclopedia of Genes and Genomes pathway analysis showed that genes involved in PPAR and PI3K-Akt signaling pathways were mainly upregulated, while genes involved in metabolism, ECM receptors, and transforming growth factor  $\beta$  pathway were downregulated. The results acquired from the 3D tumors *in vitro* would be meaningful information for better understanding of both intrinsic and extrinsic features of GBM. Such a 3D tumor model has the potential to serve as a platform for anti-GBM drug screening.

The discovery of anticancer drugs often begins with the lack of suitable medical products for a particular clinical condition<sup>[4]</sup>. To date, the 3D cancer models have gained recognition in the explication of tumor biology because the conventional 2D cell models are inadequate to solve the unanswered questions. Some of the aforementioned issues, such as indolent cancer pathology, the invasive colonization, and the recurrent and rapid evolution of anticancer drug resistance, were exhibited by 3D cell systems<sup>[88]</sup>.

For example, Imamura *et al*<sup>[89]</sup> compared the anticancer drug sensitivity between 2D and 3D cells and found that the 3D cancer spheroids contained greater resistance to paclitaxel and doxorubicin than that of the 2D cultured cells. The 3D ovarian cancer spheroids forming by hanging drop technique were 2-fold more resistant to cisplatin compared to the 2D cultures<sup>[90]</sup>. The ovarian cancer spheroids were uniform in geometry and contained over 85% of cell viability.

The influences of 3D structures and ECM on glioma stemness were examined by Ma *et al*<sup>[91]</sup>. U251 human glioblastoma cells increased expression of stemness markers (integrin) when cultured on electrospun polystyrene scaffolds coated with laminin. In another study, the 3D tumor cells stimulated autophagic flux and chemotherapy resistance. The key features of cancer, including cell proliferation, cell death, and macroautophagy were modulated by either 3D static or 3D bioreactor systems. The autophagy controlling transcription factors (TFEB and FOXO3) were upregulated in

the 3D tumor spheroids. Altogether, the 3D culture models were a beneficial system to study anticancer drug responses of cancer cells, as these models closely mimic patho/physiology of tumor<sup>[92]</sup>.

### Stem cell modeling

Stem cells, particularly pluripotent stem cells (PSCs), contain tremendous potential for generating pure populations of any cell type in the human body and shed light on regenerative medicine. Pure populations of tissue-specific progenitors or terminally differentiated cells could be integrated into healthcare innovations, in particular drug discovery, cell therapy, and tissue regeneration. Major advances have been accomplished in the stem cell arena using 3D cell platforms that recapitulated the development and regulation of cellular signaling in organisms<sup>[93]</sup>. The development of induced PSC (iPSC)-derived human cardiomyocytes (CMs) by 3D CM spheroids was successfully demonstrated by Beauchamp *et al*<sup>[94]</sup>. After 4 d of the culture, the iPSC-derived CMs developed cardiac microtissues presenting a uniform structure of mature myofibrils without a necrotic core. Retinal ganglion cells differentiated into incisor dental pulp stem cells when cultured in the 3D scaffolds. The 3D network of biocompatible fibrin hydrogel could resemble the properties of *in vivo* microenvironment for efficient development of retinal ganglion cells, which could be used to tackle neurological disorders, for instance glaucoma<sup>[95]</sup>.

The progress in tissue engineering, cell therapy, and materials research has led to 3D bioprinting, which could generate functional cells, tissues, or organs for transplantation with close similarity to their target graft sites. Nevertheless, the printing of intact tissues or organs still persists as a challenge. The 3D bioprinting of tracheal, bladder, bone, and cartilage was demonstrated to function well *in vivo*<sup>[96]</sup>. These printed organs can be translated into clinical uses. For instance, Atala *et al*<sup>[97]</sup> bioengineered a human bladder from autologous urothelial cells and muscle cells prior to culturing the cells *in vitro* onto a biodegradable bladder-shaped scaffolds. After 7 wk of the 3D culture, the artificial bladders were applied for reconstruction and transplantation.

The 3D bioprinting technology was modified for the construction of the liver-like microstructure, exploiting 3D bioprinting of hepatoma cells and gelatin methacryloyl hydrogel<sup>[98]</sup>. The engineered hepatic constructs were still functional after 30 d as assessed by the production and release of albumin, alpha-1 antitrypsin, transferrin, and ceruloplasmin. Immunostaining of the hepatocyte markers was also performed in order to validate the liver functions, including cytokeratin 18, MRP2, and ZO-1. The treatment of acetaminophen instigated an adverse response in the engineered hepatic-like structure, providing a proof-of-concept of using this artificial liver for toxicity assessment.

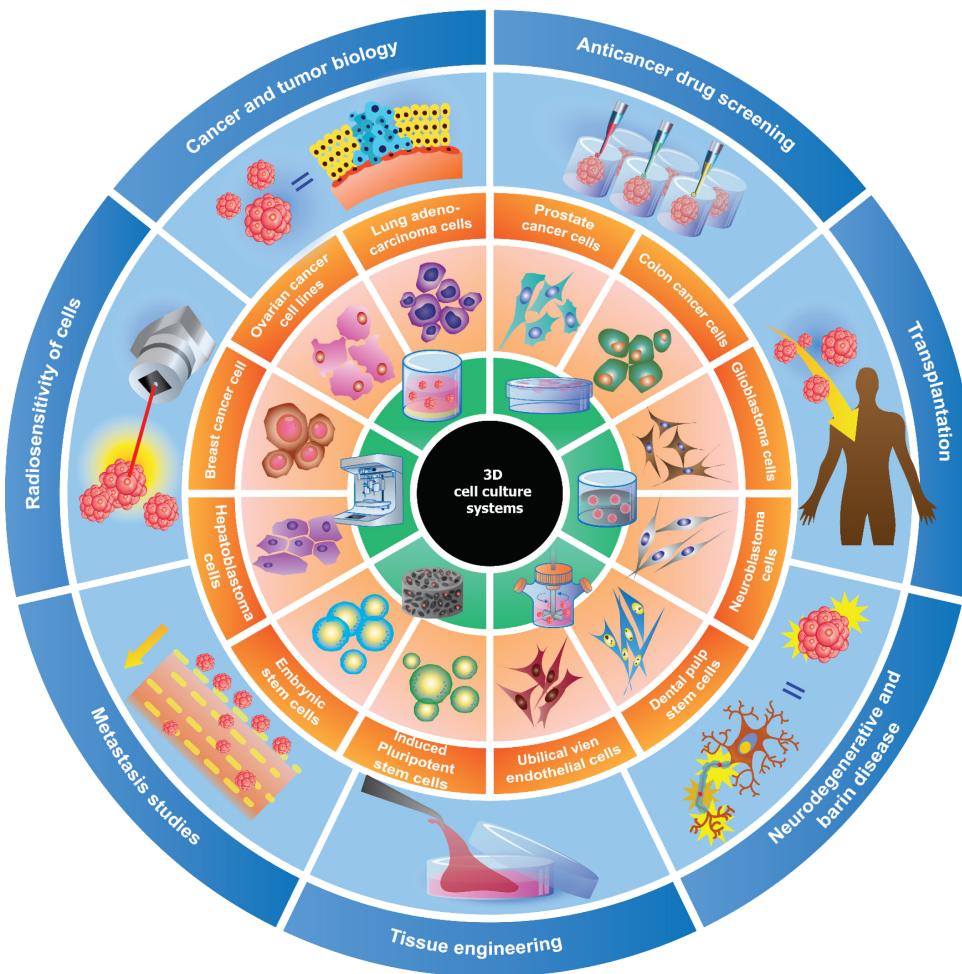
The bioprinting strategy was used to print human umbilical vein endothelial cells-laden bio-ink (mainly alginate and gelatin) to fabricate a multi-layered microfibrillar construct<sup>[99]</sup>. The bioprinted human umbilical vein endothelial cells translocated to the periphery and formed a layer of endothelial cells. This 3D endothelial structure was cocultured with human iPSC-derived CMs, fabricating the well-aligned myocardium that could contract in a spontaneous and synchronous manner. These 3D myocardial organoids were then processed into microfluidic perfusion bioreactors in order to develop an endothelial-myocardium chip that was used for the assessment of cardiovascular toxicity. This highlighted the progress of human stem cell technology for cardiovascular disease modeling and testing of relevant drugs.

Another example of 3D culture and stem cell differentiation was presented in a 3D hydrogel, which could promote the differentiation of human iPSCs into functional hepatocytes. The 3D conditions for hepatic differentiation of human iPSCs induced the expression of liver markers, hepatocyte maturation, and metabolic levels. The derivation of hepatocyte-like cells from human iPSCs provided a foundation for an artificial human liver, toxicity screening, and hepatocyte transplantation<sup>[100]</sup>. Hydrogel encapsulation could generate the 3D neural tissues by coculturing neuronal and astrocytic cells<sup>[101]</sup>. The transcriptomic profiles proposed that hydrogels could tune the expression patterns of the 3D brain organoids, correlating with those of specific brain regions and developmental stages.

## CONCLUSIONS

The 3D cell culture systems are increasingly important in tumor and stem cell biology research. Because of the intrinsic discrepancies in complexity and functionality of tissues and organs, the selection of the 3D cellular model depends on the application, ranging from the simple cell spheroids to the complex 3D bioprinting structures.

Extensive choices of 3D cell culture technologies have been invented in order to fulfill the demand of the pharmaceutical industry. The 3D cell systems hold a great promise for drug discovery, disease simulation, cancer-targeted therapy, and a novel source of tissue replacement materials. The future of 3D cell systems should validate the preclinical outcomes, leading to the replacement of lab animal experimentation. The functional, safe, and transplantable index of the 3D cell cultures will need intensive investigation in order to bring it to clinical use (Figure 3).



**Figure 3 Potential applications of three-dimensional cell culture systems.** The invention of three-dimensional cell culture systems could be applied into various aspects, for instance anticancer drug screening, tissue engineering, cancer biology, and clinical uses.

## ACKNOWLEDGEMENTS

The authors thank Suranaree University of Technology for providing working enrollment, and members of the laboratory of Cell-Based Assays and Innovations for all assistance.

## REFERENCES

1. **Bray F**, Ferlay J, Soerjomataram I, Siegel RL, Torre LA, Jemal A. Global cancer statistics 2018: GLOBOCAN estimates of incidence and mortality worldwide for 36 cancers in 185 countries. *CA Cancer J Clin* 2018; **68**: 394-424 [PMID: 30207593 DOI: 10.3322/caac.21492]
2. **Lovitt CJ**, Shelper TB, Avery VM. Advanced cell culture techniques for cancer drug discovery. *Biology (Basel)* 2014; **3**: 345-367 [PMID: 24887773 DOI: 10.3390/biology3020345]
3. **Westhouse RA**. Safety assessment considerations and strategies for targeted small molecule cancer therapeutics in drug discovery. *Toxicol Pathol* 2010; **38**: 165-168 [PMID: 19907054 DOI: 10.1177/0192623309354341]
4. **Hughes JP**, Rees S, Kalindjian SB, Philpott KL. Principles of early drug discovery. *Br J. Pharmacol* 2011; **162**: 1239-1249 [PMID: 21091654 DOI: 10.1111/j.1476-5381.2010.01127.x]
5. **Gomez-Roman N**, Stevenson K, Gilmour L, Hamilton G, Chalmers AJ. A novel 3D human glioblastoma cell culture system for modeling drug and radiation responses. *Neuro Oncol* 2017; **19**: 229-241 [PMID: 27576873 DOI: 10.1093/neuonc/now164]
6. **Hingorani P**, Zhang W, Piperdi S, Pressman L, Lin J, Gorlick R, Kolb EA. Preclinical activity of palifosfamide lysine (ZIO-201) in pediatric sarcomas including oxazaphosphorine-resistant osteosarcoma. *Cancer Chemother Pharmacol* 2009; **64**: 733-740 [PMID: 19224214 DOI: 10.1007/s00280-008-0922-4]
7. **Ramaiahgari SC**, den Braver MW, Herpers B, Terpstra V, Commandeur JN, van de Water B, Price LS. A 3D *in vitro* model of differentiated HepG2 cell spheroids with improved liver-like properties for repeated dose high-throughput toxicity studies. *Arch Toxicol* 2014; **88**: 1083-1095 [PMID: 24599296 DOI: 10.1007/s00204-014-1215-9]
8. **Lv D**, Hu Z, Lu L, Lu H, Xu X. Three-dimensional cell culture: A powerful tool in tumor research and drug discovery. *Oncol Lett* 2017; **14**: 6999-7010 [PMID: 29344128 DOI: 10.3892/ol.2017.7134]

- 9 **Weigelt B**, Ghajar CM, Bissell MJ. The need for complex 3D culture models to unravel novel pathways and identify accurate biomarkers in breast cancer. *Adv Drug Deliv Rev* 2014; **69-70**: 42-51 [PMID: 24412474 DOI: 10.1016/j.addr.2014.01.001]
- 10 **Hwang YS**, Cho J, Tay F, Heng JY, Ho R, Kazarian SG, Williams DR, Boccaccini AR, Polak JM, Mantalaris A. The use of murine embryonic stem cells, alginate encapsulation, and rotary microgravity bioreactor in bone tissue engineering. *Biomaterials* 2009; **30**: 499-507 [PMID: 18977027 DOI: 10.1016/j.biomaterials.2008.07.028]
- 11 **Lv D**, Yu SC, Ping YF, Wu H, Zhao X, Zhang H, Cui Y, Chen B, Zhang X, Dai J, Bian XW, Yao XH. A three-dimensional collagen scaffold cell culture system for screening anti-glioma therapeutics. *Oncotarget* 2016; **7**: 56904-56914 [PMID: 27486877 DOI: 10.18632/oncotarget.10885]
- 12 **Huang Y**, Tong L, Yi L, Zhang C, Hai L, Li T, Yu S, Wang W, Tao Z, Ma H, Liu P, Xie Y, Yang X. Three-dimensional hydrogel is suitable for targeted investigation of amoeboid migration of glioma cells. *Mol Med Rep* 2018; **17**: 250-256 [PMID: 29115617 DOI: 10.3892/mmr.2017.7888]
- 13 **Florczyk SJ**, Wang K, Jana S, Wood DL, Sytsma SK, Sham J, Kievit FM, Zhang M. Porous chitosan-hyaluronic acid scaffolds as a mimic of glioblastoma microenvironment ECM. *Biomaterials* 2013; **34**: 10143-10150 [PMID: 24075410 DOI: 10.1016/j.biomaterials.2013.09.034]
- 14 **Gerecht-Nir S**, Cohen S, Ziskind A, Itskovitz-Eldor J. Three-dimensional porous alginate scaffolds provide a conducive environment for generation of well-vascularized embryoid bodies from human embryonic stem cells. *Biotechnol Bioeng* 2004; **88**: 313-320 [PMID: 15486935 DOI: 10.1002/bit.20248]
- 15 **Harrison RG**, Greenman M, Mall FP, Jackson C. Observations of the living developing nerve fiber. *The Anatomical Record* 1907; **1**: 116-128 [DOI: 10.1002/ar.1090010503]
- 16 **Torsvik A**, Stieber D, Enger PØ, Golebiewska A, Molven A, Svendsen A, Westermarck B, Niclou SP, Olsen TK, Chekenya Enger M, Bjerkvig R. U-251 revisited: genetic drift and phenotypic consequences of long-term cultures of glioblastoma cells. *Cancer Med* 2014; **3**: 812-824 [PMID: 24810477 DOI: 10.1002/cam4.219]
- 17 **Aggarwal BB**, Danda D, Gupta S, Gehlot P. Models for prevention and treatment of cancer: problems vs promises. *Biochem Pharmacol* 2009; **78**: 1083-1094 [PMID: 19481061 DOI: 10.1016/j.bcp.2009.05.027]
- 18 **Antoni D**, Burckel H, Josset E, Noel G. Three-dimensional cell culture: a breakthrough *in vivo*. *Int J Mol Sci* 2015; **16**: 5517-5527 [PMID: 25768338 DOI: 10.3390/ijms16035517]
- 19 **Edmondson R**, Broglie JJ, Adcock AF, Yang L. Three-dimensional cell culture systems and their applications in drug discovery and cell-based biosensors. *Assay Drug Dev Technol* 2014; **12**: 207-218 [PMID: 24831787 DOI: 10.1089/adt.2014.573]
- 20 **Hutchinson L**, Kirk R. High drug attrition rates--where are we going wrong? *Nat Rev Clin Oncol* 2011; **8**: 189-190 [PMID: 21448176 DOI: 10.1038/nrclinonc.2011.34]
- 21 **Birgersdotter A**, Sandberg R, Ernberg I. Gene expression perturbation *in vitro*--a growing case for three-dimensional (3D) culture systems. *Semin Cancer Biol* 2005; **15**: 405-412 [PMID: 16055341 DOI: 10.1016/j.semcancer.2005.06.009]
- 22 **Yamada KM**, Cukierman E. Modeling tissue morphogenesis and cancer in 3D. *Cell* 2007; **130**: 601-610 [PMID: 17719539 DOI: 10.1016/j.cell.2007.08.006]
- 23 **Friedrich J**, Ebner R, Kunz-Schughart LA. Experimental anti-tumor therapy in 3-D: spheroids--old hat or new challenge? *Int J Radiat Biol* 2007; **83**: 849-871 [PMID: 18058370 DOI: 10.1080/09553000701727531]
- 24 **Abbott A**. Cell culture: biology's new dimension. *Nature* 2003; **424**: 870-872 [PMID: 12931155 DOI: 10.1038/424870a]
- 25 **Langer R**, Tirrell DA. Designing materials for biology and medicine. *Nature* 2004; **428**: 487-492 [PMID: 15057821 DOI: 10.1038/nature02388]
- 26 **Lee J**, Cuddihy MJ, Kotov NA. Three-dimensional cell culture matrices: state of the art. *Tissue Eng Part B Rev* 2008; **14**: 61-86 [PMID: 18454635 DOI: 10.1089/teb.2007.0150]
- 27 **Kim JB**. Three-dimensional tissue culture models in cancer biology. *Semin Cancer Biol* 2005; **15**: 365-377 [PMID: 15975824 DOI: 10.1016/j.semcancer.2005.05.002]
- 28 **Florczyk SJ**, Kievit FM, Wang K, Erickson AE, Ellenbogen RG, Zhang M. 3D Porous Chitosan-Alginate Scaffolds Promote Proliferation and Enrichment of Cancer Stem-Like Cells. *J Mater Chem B* 2016; **4**: 6326-6334 [PMID: 28133535 DOI: 10.1039/C6TB01713D]
- 29 **Khaitan D**, Chandna S, Arya MB, Dwarakanath BS. Establishment and characterization of multicellular spheroids from a human glioma cell line; Implications for tumor therapy. *J Transl Med* 2006; **4**: 12 [PMID: 16509995 DOI: 10.1186/1479-5876-4-12]
- 30 **Senkowski W**, Jarvius M, Rubin J, Lengqvist J, Gustafsson MG, Nygren P, Kultima K, Larsson R, Fryknäs M. Large-Scale Gene Expression Profiling Platform for Identification of Context-Dependent Drug Responses in Multicellular Tumor Spheroids. *Cell Chem Biol* 2016; **23**: 1428-1438 [PMID: 27984028 DOI: 10.1016/j.chembiol.2016.09.013]
- 31 **Mehta G**, Hsiao AY, Ingram M, Luker GD, Takayama S. Opportunities and challenges for use of tumor spheroids as models to test drug delivery and efficacy. *J Control Release* 2012; **164**: 192-204 [PMID: 22613880 DOI: 10.1016/j.jconrel.2012.04.045]
- 32 **Gurski LA**, Petrelli NJ, Jia X, Farach-Carson MC. 3D matrices for anti-cancer drug testing and development. *Oncology Issues* 2010; **25**: 20-25 [DOI: 10.1080/10463356.2010.11883480]
- 33 **Dai X**, Ma C, Lan Q, Xu T. 3D bioprinted glioma stem cells for brain tumor model and applications of drug susceptibility. *Biofabrication* 2016; **8**: 045005 [PMID: 27725343 DOI: 10.1088/1758-5090/8/4/045005]
- 34 **Vinci M**, Gowan S, Boxall F, Patterson L, Zimmermann M, Court W, Lomas C, Mendiola M, Hardisson D, Eccles SA. Advances in establishment and analysis of three-dimensional tumor spheroid-based functional assays for target validation and drug evaluation. *BMC Biol* 2012; **10**: 29 [PMID: 22439642 DOI: 10.1186/1741-7007-10-29]
- 35 **Friedrich J**, Seidel C, Ebner R, Kunz-Schughart LA. Spheroid-based drug screen: considerations and practical approach. *Nat Protoc* 2009; **4**: 309-324 [PMID: 19214182 DOI: 10.1038/nprot.2008.226]
- 36 **Shin C**, Kwak B, Han B, Park K, Panitch A. 3D cancer tumor models for evaluating chemotherapeutic efficacy. *Biomaterials for cancer therapeutics* 2014; 445-460 [DOI: 10.1533/9780857096760.4.445]
- 37 **Carlsson J**, Yuhas JM. Liquid-overlay culture of cellular spheroids. Recent Results. *Cancer Res* 1984; **95**: 1-23 [PMID: 6396753 DOI: 10.1007/978-3-642-82340-4\_1]
- 38 **Costa EC**, Gaspar VM, Coutinho P, Correia IJ. Optimization of liquid overlay technique to formulate heterogenic 3D co-cultures models. *Biotechnol Bioeng* 2014; **111**: 1672-1685 [PMID: 24615162 DOI: 10.1002/bit.25210]

- 39 **Metzger W**, Sossong D, Bächle A, Pütz N, Wennemuth G, Pohlemann T, Oberringer M. The liquid overlay technique is the key to formation of co-culture spheroids consisting of primary osteoblasts, fibroblasts and endothelial cells. *Cytotherapy* 2011; **13**: 1000-1012 [PMID: [21619419](#) DOI: [10.3109/14653249.2011.583233](#)]
- 40 **Lin RZ**, Chang HY. Recent advances in three-dimensional multicellular spheroid culture for biomedical research. *Biotechnol J* 2008; **3**: 1172-1184 [PMID: [18566957](#) DOI: [10.1002/biot.200700228](#)]
- 41 **Thoma CR**, Zimmermann M, Agarkova I, Kelm JM, Krek W. 3D cell culture systems modeling tumor growth determinants in cancer target discovery. *Adv Drug Deliv Rev* 2014; **69-70**: 29-41 [PMID: [24636868](#) DOI: [10.1016/j.addr.2014.03.001](#)]
- 42 **Kelm JM**, Timmins NE, Brown CJ, Fussenegger M, Nielsen LK. Method for generation of homogeneous multicellular tumor spheroids applicable to a wide variety of cell types. *Biotechnol Bioeng* 2003; **83**: 173-180 [PMID: [12768623](#) DOI: [10.1002/bit.10655](#)]
- 43 **Kurosawa H**. Methods for inducing embryoid body formation: *in vitro* differentiation system of embryonic stem cells. *J Biosci Bioeng* 2007; **103**: 389-398 [PMID: [17609152](#) DOI: [10.1263/jbb.103.389](#)]
- 44 **Drury JL**, Mooney DJ. Hydrogels for tissue engineering: Scaffold design variables and applications. *Biomaterials* 2003; **24**: 4337-4351 [DOI: [10.1016/S0142-9612\(03\)00340-5](#)]
- 45 **Nicodemus GD**, Bryant SJ. Cell encapsulation in biodegradable hydrogels for tissue engineering applications. *Tissue Eng Part B Rev* 2008; **14**: 149-165 [PMID: [18498217](#) DOI: [10.1089/ten.teb.2007.0332](#)]
- 46 **Frampton JP**, Hynd MR, Shuler ML, Shain W. Fabrication and optimization of alginate hydrogel constructs for use in 3D neural cell culture. *Biomed Mater* 2011; **6**: 015002 [PMID: [21205998](#) DOI: [10.1088/1748-6041/6/1/015002](#)]
- 47 **Fang Y**, Eglen RM. Three-Dimensional Cell Cultures in Drug Discovery and Development. *SLAS Discov* 2017; **22**: 456-472 [PMID: [28520521](#) DOI: [10.1177/1087057117696795](#)]
- 48 **Leach JB**, Schmidt CE. Characterization of protein release from photocrosslinkable hyaluronic acid-polyethylene glycol hydrogel tissue engineering scaffolds. *Biomaterials* 2005; **26**: 125-135 [PMID: [15207459](#) DOI: [10.1016/j.biomaterials.2004.02.018](#)]
- 49 **Shelke NB**, Lee P, Anderson M, Mistry N, Nagarale RK, Ma XM, Yu X, Kumbar SG. Neural tissue engineering: Nanofiber-hydrogel based composite scaffolds. *Polymers Advan Techno* 2016; **27**: 42-51 [DOI: [10.1002/pat.3594](#)]
- 50 **Lim F**, Sun AM. Microencapsulated islets as bioartificial endocrine pancreas. *Science* 1980; **210**: 908-910 [PMID: [6776628](#) DOI: [10.1126/science.6776628](#)]
- 51 **Andersen T**, Auk-Emblem P, Dornish M. 3D Cell Culture in Alginate Hydrogels. *Microarrays (. Basei)* 2015; **4**: 133-161 [PMID: [27600217](#) DOI: [10.3390/microarrays4020133](#)]
- 52 **Justice BA**, Badr NA, Felder RA. 3D cell culture opens new dimensions in cell-based assays. *Drug Discov Today* 2009; **14**: 102-107 [PMID: [19049902](#) DOI: [10.1016/j.drudis.2008.11.006](#)]
- 53 **Hosseinkhani H**, Hosseinkhani M, Hattori S, Matsuoka R, Kawaguchi N. Micro and nano-scale *in vitro* 3D culture system for cardiac stem cells. *J Biomed Mater Res A* 2010; **94**: 1-8 [PMID: [20014298](#) DOI: [10.1002/jbm.a.32676](#)]
- 54 **Zimmermann WH**, Fink C, Kralisch D, Remmers U, Weil J, Eschenhagen T. Three-dimensional engineered heart tissue from neonatal rat cardiac myocytes. *Biotechnol Bioeng* 2000; **68**: 106-114 [PMID: [10699878](#) DOI: [10.1002/\(SICI\)1097-0290\(20000405\)68:1<106::AID-BIT13>3.3.CO;2-V](#)]
- 55 **Zustiak SP**, Wei Y, Leach JB. Protein-hydrogel interactions in tissue engineering: mechanisms and applications. *Tissue Eng Part B Rev* 2013; **19**: 160-171 [PMID: [23150926](#) DOI: [10.1089/ten.teb.2012.0458](#)]
- 56 **Leor J**, Tuvia S, Guetta V, Manczur F, Castel D, Willenz U, Petneházy O, Landa N, Feinberg MS, Konen E, Goitein O, Tsur-Gang O, Shaul M, Klapper L, Cohen S. Intracoronary injection of in situ forming alginate hydrogel reverses left ventricular remodeling after myocardial infarction in Swine. *J Am Coll Cardiol* 2009; **54**: 1014-1023 [PMID: [19729119](#) DOI: [10.1016/j.jacc.2009.06.010](#)]
- 57 **Li Z**, Guan J. Hydrogels for cardiac tissue engineering. *Polymers* 2011; **3**: 740-761 [DOI: [10.3390/polym3020740](#)]
- 58 **Hao X**, Silva EA, Månsson-Broberg A, Grinnemo KH, Siddiqui AJ, Dellgren G, Wårdell E, Brodin LA, Mooney DJ, Sylén C. Angiogenic effects of sequential release of VEGF-A165 and PDGF-BB with alginate hydrogels after myocardial infarction. *Cardiovasc Res* 2007; **75**: 178-185 [PMID: [17481597](#) DOI: [10.1016/j.cardiores.2007.03.028](#)]
- 59 **Hunt NC**, Smith AM, Gbureck U, Shelton RM, Grover LM. Encapsulation of fibroblasts causes accelerated alginate hydrogel degradation. *Acta Biomater* 2010; **6**: 3649-3656 [PMID: [20307693](#) DOI: [10.1016/j.actbio.2010.03.026](#)]
- 60 **Al-Shamkhani A**, Duncan R. Radioiodination of alginate via covalently-bound tyrosinamide allows monitoring of its fate *in vivo*. *J Bioact Compat Pol* 1995; **10**: 4-13 [DOI: [10.1177/088391159501000102](#)]
- 61 **Ou KL**, Hosseinkhani H. Development of 3D *in vitro* technology for medical applications. *Int J Mol Sci* 2014; **15**: 17938-17962 [PMID: [25299693](#) DOI: [10.3390/ijms151017938](#)]
- 62 **Rauh J**, Milan F, Günther KP, Stiehler M. Bioreactor systems for bone tissue engineering. *Tissue Eng Part B Rev* 2011; **17**: 263-280 [PMID: [21495897](#) DOI: [10.1089/ten.TEB.2010.0612](#)]
- 63 **Tostões RM**, Leite SB, Serra M, Jensen J, Björquist P, Carrondo MJ, Brito C, Alves PM. Human liver cell spheroids in extended perfusion bioreactor culture for repeated-dose drug testing. *Hepatology* 2012; **55**: 1227-1236 [PMID: [22031499](#) DOI: [10.1002/hep.24760](#)]
- 64 **Breslin S**, O'Driscoll L. Three-dimensional cell culture: the missing link in drug discovery. *Drug Discov Today* 2013; **18**: 240-249 [PMID: [23073387](#) DOI: [10.1016/j.drudis.2012.10.003](#)]
- 65 **Kim JB**, Stein R, O'Hare MJ. Three-dimensional *in vitro* tissue culture models of breast cancer-- a review. *Breast Cancer Res Treat* 2004; **85**: 281-291 [PMID: [15111767](#) DOI: [10.1023/B:BREA.0000025418.88785.2b](#)]
- 66 **Ebrahimkhani MR**, Neiman JA, Raredon MS, Hughes DJ, Griffith LG. Bioreactor technologies to support liver function *in vitro*. *Adv Drug Deliv Rev* 2014; **69-70**: 132-157 [PMID: [24607703](#) DOI: [10.1016/j.addr.2014.02.011](#)]
- 67 **Sisson K**, Zhang C, Farach-Carson MC, Chase DB, Rabolt JF. Fiber diameters control osteoblastic cell migration and differentiation in electrospun gelatin. *J Biomed Mater Res A* 2010; **94**: 1312-1320 [PMID: [20694999](#) DOI: [10.1002/jbm.a.32756](#)]
- 68 **Jin HJ**, Chen J, Karageorgiou V, Altman GH, Kaplan DL. Human bone marrow stromal cell responses on electrospun silk fibroin mats. *Biomaterials* 2004; **25**: 1039-1047 [PMID: [14615169](#) DOI: [10.1016/s0142-9612\(03\)00609-4](#)]

- 69 **Chen CY**, Ke CJ, Yen KC, Hsieh HC, Sun JS, Lin FH. 3D porous calcium-alginate scaffolds cell culture system improved human osteoblast cell clusters for cell therapy. *Theranostics* 2015; **5**: 643-655 [PMID: 25825603 DOI: 10.7150/thno.11372]
- 70 **Wu X**, Liu Y, Li X, Wen P, Zhang Y, Long Y, Wang X, Guo Y, Xing F, Gao J. Preparation of aligned porous gelatin scaffolds by unidirectional freeze-drying method. *Acta Biomater* 2010; **6**: 1167-1177 [PMID: 19733699 DOI: 10.1016/j.actbio.2009.08.041]
- 71 **Sachlos E**, Czernuszka JT. Making tissue engineering scaffolds work. Review: the application of solid freeform fabrication technology to the production of tissue engineering scaffolds. *Eur Cell Mater* 2003; **5**: 29-39; discussion 39-40 [PMID: 14562270 DOI: 10.22203/ecm.v005a03]
- 72 **Whang K**, Thomas C, Healy K, Nuber G. A novel method to fabricate bioabsorbable scaffolds. *POLYMER* 1995; **36**: 837-842 [DOI: 10.1016/0032-3861(95)93115-3]
- 73 **Mikos AG**, Temenoff JS. Formation of highly porous biodegradable scaffolds for tissue engineering. *Electron J of Biotech* 2000; **3**: 23-24 [DOI: 10.2225/vol3-issue2-fulltext-5]
- 74 **O'Brien FJ**, Harley BA, Yannas IV, Gibson L. Influence of freezing rate on pore structure in freeze-dried collagen-GAG scaffolds. *Biomaterials* 2004; **25**: 1077-1086 [PMID: 14615173 DOI: 10.1016/s0142-9612(03)00630-6]
- 75 **Sun J**, Tan H. Alginate-Based Biomaterials for Regenerative Medicine Applications. *Materials (Basel)* 2013; **6**: 1285-1309 [PMID: 28809210 DOI: 10.3390/ma6041285]
- 76 **Kumbhar SG**, Pawar SH. Synthesis and characterization of chitosan-alginate scaffolds for seeding human umbilical cord derived mesenchymal stem cells. *Biomed Mater Eng* 2016; **27**: 561-575 [PMID: 28234241 DOI: 10.3233/BME-161609]
- 77 **Murphy SV**, Atala A. 3D bioprinting of tissues and organs. *Nat Biotechnol* 2014; **32**: 773-785 [PMID: 25093879 DOI: 10.1038/nbt.2958]
- 78 **Yu Y**, Zhang Y, Martin JA, Ozbolat IT. Evaluation of cell viability and functionality in vessel-like bioprintable cell-laden tubular channels. *J Biomech Eng* 2013; **135**: 91011 [PMID: 23719889 DOI: 10.1115/1.4024575]
- 79 **Cui X**, Breitenkamp K, Finn MG, Lotz M, D'Lima DD. Direct human cartilage repair using three-dimensional bioprinting technology. *Tissue Eng Part A* 2012; **18**: 1304-1312 [PMID: 22394017 DOI: 10.1089/ten.TEA.2011.0543]
- 80 **Lee V**, Singh G, Trasatti JP, Bjornsson C, Xu X, Tran TN, Yoo SS, Dai G, Karande P. Design and fabrication of human skin by three-dimensional bioprinting. *Tissue Eng Part C Methods* 2014; **20**: 473-484 [PMID: 24188635 DOI: 10.1089/ten.TEC.2013.0335]
- 81 **Tasoglu S**, Demirci U. Bioprinting for stem cell research. *Trends Biotechnol* 2013; **31**: 10-19 [PMID: 23260439 DOI: 10.1016/j.tibtech.2012.10.005]
- 82 **Jessop ZM**, Al-Sabah A, Gardiner MD, Combella E, Hawkins K, Whitaker IS. 3D bioprinting for reconstructive surgery: Principles, applications and challenges. *J Plast Reconstr Aesthet Surg* 2017; **70**: 1155-1170 [PMID: 28734756 DOI: 10.1016/j.bjps.2017.06.001]
- 83 **Zhao Y**, Yao R, Ouyang L, Ding H, Zhang T, Zhang K, Cheng S, Sun W. Three-dimensional printing of Hela cells for cervical tumor model *in vitro*. *Biofabrication* 2014; **6**: 035001 [PMID: 24722236 DOI: 10.1088/1758-5082/6/3/035001]
- 84 **Knowlton S**, Onal S, Yu CH, Zhao JJ, Tasoglu S. Bioprinting for cancer research. *Trends Biotechnol* 2015; **33**: 504-513 [PMID: 26216543 DOI: 10.1016/j.tibtech.2015.06.007]
- 85 **Peela N**, Sam FS, Christenson W, Truong D, Watson AW, Mouneimne G, Ros R, Nikkha M. A three dimensional micropatterned tumor model for breast cancer cell migration studies. *Biomaterials* 2016; **81**: 72-83 [PMID: 26724455 DOI: 10.1016/j.biomaterials.2015.11.039]
- 86 **Zhu W**, Holmes B, Glazer RI, Zhang LG. 3D printed nanocomposite matrix for the study of breast cancer bone metastasis. *Nanomedicine* 2016; **12**: 69-79 [PMID: 26472048 DOI: 10.1016/j.nano.2015.09.010]
- 87 **Ma L**, Zhang B, Zhou C, Li Y, Li B, Yu M, Luo Y, Gao L, Zhang D, Xue Q, Qiu Q, Lin B, Zou J, Yang H. The comparison genomics analysis with glioblastoma multiforme (GBM) cells under 3D and 2D cell culture conditions. *Colloids Surf B Biointerfaces* 2018; **172**: 665-673 [PMID: 30243220 DOI: 10.1016/j.colsurfb.2018.09.034]
- 88 **Tanner K**, Gottesman MM. Beyond 3D culture models of cancer. *Sci Transl Med* 2015; **7**: 283ps9 [PMID: 25877888 DOI: 10.1126/scitranslmed.3009367]
- 89 **Imamura Y**, Mukohara T, Shimono Y, Funakoshi Y, Chayahara N, Toyoda M, Kiyota N, Takao S, Kono S, Nakatsura T, Minami H. Comparison of 2D- and 3D-culture models as drug-testing platforms in breast cancer. *Oncol Rep* 2015; **33**: 1837-1843 [PMID: 25634491 DOI: 10.3892/or.2015.3767]
- 90 **Raghavan S**, Ward MR, Rowley KR, Wold RM, Takayama S, Buckanovich RJ, Mehta G. Formation of stable small cell number three-dimensional ovarian cancer spheroids using hanging drop arrays for preclinical drug sensitivity assays. *Gynecol Oncol* 2015; **138**: 181-189 [PMID: 25913133 DOI: 10.1016/j.ygyno.2015.04.014]
- 91 **Ma NK**, Lim JK, Leong MF, Sandanaraj E, Ang BT, Tang C, Wan AC. Collaboration of 3D context and extracellular matrix in the development of glioma stemness in a 3D model. *Biomaterials* 2016; **78**: 62-73 [PMID: 26684838 DOI: 10.1016/j.biomaterials.2015.11.031]
- 92 **Bingel C**, Koenke E, Ridinger J, Bittmann A, Sill M, Peterziel H, Wrobel JK, Rettig I, Milde T, Fernekorn U, Weise F, Schober A, Witt O, Oehme I. Three-dimensional tumor cell growth stimulates autophagic flux and recapitulates chemotherapy resistance. *Cell Death Dis* 2017; **8**: e3013 [PMID: 28837150 DOI: 10.1038/cddis.2017.398]
- 93 **Koehler KR**, Mikosz AM, Molosh AI, Patel D, Hashino E. Generation of inner ear sensory epithelia from pluripotent stem cells in 3D culture. *Nature* 2013; **500**: 217-221 [PMID: 23842490 DOI: 10.1038/nature12298]
- 94 **Beauchamp P**, Moritz W, Kelm JM, Ullrich ND, Agarkova I, Anson BD, Suter TM, Zupping C. Development and Characterization of a Scaffold-Free 3D Spheroid Model of Induced Pluripotent Stem Cell-Derived Human Cardiomyocytes. *Tissue Eng Part C Methods* 2015; **21**: 852-861 [PMID: 25654582 DOI: 10.1089/ten.TEC.2014.0376]
- 95 **Roozafzoon R**, Lashay A, Vasei M, Ai J, Khoshzaban A, Keshel SH, Barabadi Z, Bahrami H. Dental pulp stem cells differentiation into retinal ganglion-like cells in a three dimensional network. *Biochem Biophys Res Commun* 2015; **457**: 154-160 [PMID: 25543058 DOI: 10.1016/j.bbrc.2014.12.069]
- 96 **Zhang YS**, Yue K, Aleman J, Moghaddam KM, Bakht SM, Yang J, Jia W, Dell'Erba V, Assawes P, Shin SR, Dokmeci MR, Oklu R, Khademhosseini A. 3D Bioprinting for Tissue and Organ Fabrication. *Ann Biomed Eng* 2017; **45**: 148-163 [PMID: 27126775 DOI: 10.1007/s10439-016-1612-8]
- 97 **Atala A**, Bauer SB, Soker S, Yoo JJ, Retik AB. Tissue-engineered autologous bladders for patients

- needing cystoplasty. *Lancet* 2006; **367**: 1241-1246 [PMID: [16631879](#) DOI: [10.1016/S0140-6736\(06\)68438-9](#)]
- 98 **Bhise NS**, Manoharan V, Massa S, Tamayol A, Ghaderi M, Miscuglio M, Lang Q, Shrike Zhang Y, Shin SR, Calzone G, Annabi N, Shupe TD, Bishop CE, Atala A, Dokmeci MR, Khademhosseini A. A liver-on-a-chip platform with bioprinted hepatic spheroids. *Biofabrication* 2016; **8**: 014101 [PMID: [26756674](#) DOI: [10.1088/1758-5090/8/1/014101](#)]
- 99 **Zhang YS**, Arneri A, Bersini S, Shin SR, Zhu K, Goli-Malekabadi Z, Aleman J, Colosi C, Busignani F, Dell'Erba V, Bishop C, Shupe T, Demarchi D, Moretti M, Rasponi M, Dokmeci MR, Atala A, Khademhosseini A. Bioprinting 3D microfibrous scaffolds for engineering endothelialized myocardium and heart-on-a-chip. *Biomaterials* 2016; **110**: 45-59 [PMID: [27710832](#) DOI: [10.1016/j.biomaterials.2016.09.003](#)]
- 100 **Luo Y**, Lou C, Zhang S, Zhu Z, Xing Q, Wang P, Liu T, Liu H, Li C, Shi W, Du Z, Gao Y. Three-dimensional hydrogel culture conditions promote the differentiation of human induced pluripotent stem cells into hepatocytes. *Cytotherapy* 2018; **20**: 95-107 [PMID: [28969895](#) DOI: [10.1016/j.jcyt.2017.08.008](#)]
- 101 **Tekin H**, Simmons S, Cummings B, Gao L, Adiconis X, Hession CC, Ghoshal A, Dionne D, Choudhury SR, Yesilyurt V, Sanjana NE, Shi X, Lu C, Heidenreich M, Pan JQ, Levin JZ, Zhang F. Effects of 3D culturing conditions on the transcriptomic profile of stem-cell-derived neurons. *Nat Biomed Eng* 2018; **2**: 540-554 [PMID: [30271673](#) DOI: [10.1038/s41551-018-0219-9](#)]
- 102 **Takai A**, Fako V, Dang H, Forgues M, Yu Z, Budhu A, Wang XW. Three-dimensional organotypic culture models of human hepatocellular carcinoma. *Sci Rep* 2016; **6**: 21174 [PMID: [26880118](#) DOI: [10.1038/srep21174](#)]
- 103 **Breslin S**, O'Driscoll L. The relevance of using 3D cell cultures, in addition to 2D monolayer cultures, when evaluating breast cancer drug sensitivity and resistance. *Oncotarget* 2016; **7**: 45745-45756 [PMID: [27304190](#) DOI: [10.18632/oncotarget.9935](#)]
- 104 **Krausz E**, de Hoogt R, Gustin E, Cornelissen F, Grand-Perret T, Janssen L, Vloemans N, Wuyts D, Frans S, Axel A, Peeters PJ, Hall B, Cik M. Translation of a tumor microenvironment mimicking 3D tumor growth co-culture assay platform to high-content screening. *J Biomol Screen* 2013; **18**: 54-66 [PMID: [22923784](#) DOI: [10.1177/1087057112456874](#)]
- 105 **Kang HW**, Lee SJ, Ko IK, Kengla C, Yoo JJ, Atala A. A 3D bioprinting system to produce human-scale tissue constructs with structural integrity. *Nat Biotechnol* 2016; **34**: 312-319 [PMID: [26878319](#) DOI: [10.1038/nbt.3413](#)]
- 106 **Ravi M**, Paramesh V, Kaviya SR, Anuradha E, Solomon FD. 3D cell culture systems: advantages and applications. *J Cell Physiol* 2015; **230**: 16-26 [PMID: [24912145](#) DOI: [10.1002/jcp.24683](#)]
- 107 **Hickman JA**, Graeser R, de Hoogt R, Vidic S, Brito C, Gutekunst M, van der Kuip H, IMI PREDECT Consortium. Three-dimensional models of cancer for pharmacology and cancer cell biology: capturing tumor complexity *in vitro/ex vivo*. *Biotechnol J* 2014; **9**: 1115-1128 [PMID: [25174503](#) DOI: [10.1002/biot.201300492](#)]
- 108 **Pampaloni F**, Reynaud EG, Stelzer EH. The third dimension bridges the gap between cell culture and live tissue. *Nat Rev Mol Cell Biol* 2007; **8**: 839-845 [PMID: [17684528](#) DOI: [10.1038/nrm2236](#)]
- 109 **Leong DT**, Ng KW. Probing the relevance of 3D cancer models in nanomedicine research. *Adv Drug Deliv Rev* 2014; **79-80**: 95-106 [PMID: [24996135](#) DOI: [10.1016/j.addr.2014.06.007](#)]
- 110 **Giacomelli E**, Bellin M, Sala L, van Meer BJ, Tertoolen LG, Orlova VV, Mummery CL. Three-dimensional cardiac microtissues composed of cardiomyocytes and endothelial cells co-differentiated from human pluripotent stem cells. *Development* 2017; **144**: 1008-1017 [PMID: [28279973](#) DOI: [10.1242/dev.143438](#)]
- 111 **Fitzgerald KA**, Guo J, Tierney EG, Curtin CM, Malhotra M, Darcy R, O'Brien FJ, O'Driscoll CM. The use of collagen-based scaffolds to simulate prostate cancer bone metastases with potential for evaluating delivery of nanoparticulate gene therapeutics. *Biomaterials* 2015; **66**: 53-66 [PMID: [26196533](#) DOI: [10.1016/j.biomaterials.2015.07.019](#)]
- 112 **Simon KA**, Mosadegh B, Minn KT, Lockett MR, Mohammady MR, Boucher DM, Hall AB, Hillier SM, Udagawa T, Eustace BK, Whitesides GM. Metabolic response of lung cancer cells to radiation in a paper-based 3D cell culture system. *Biomaterials* 2016; **95**: 47-59 [PMID: [27116031](#) DOI: [10.1016/j.biomaterials.2016.03.002](#)]



Published By Baishideng Publishing Group Inc  
7041 Koll Center Parkway, Suite 160, Pleasanton, CA 94566, USA  
Telephone: +1-925-2238242  
E-mail: [bpgoffice@wjgnet.com](mailto:bpgoffice@wjgnet.com)  
Help Desk: <https://www.f6publishing.com/helpdesk>  
<https://www.wjgnet.com>

