

World Journal of *Stem Cells*

World J Stem Cells 2022 August 26; 14(8): 577-683



Contents

Monthly Volume 14 Number 8 August 26, 2022

OPINION REVIEW

- 577 Pancreatic transplant surgery and stem cell therapy: Finding the balance between therapeutic advances and ethical principles

Padovano M, Scopetti M, Manetti F, Morena D, Radaelli D, D'Errico S, Di Fazio N, Frati P, Fineschi V

MINIREVIEWS

- 587 Metabolic determinants of stemness in medulloblastoma

Martín-Rubio P, Espiau-Romera P, Royo-García A, Caja L, Sancho P

ORIGINAL ARTICLE

Basic Study

- 599 Sinomenine promotes differentiation of induced pluripotent stem cells into immature dendritic cells with high induction of immune tolerance

Huang XY, Jin ZK, Dou M, Zheng BX, Zhao XR, Feng Q, Feng YM, Duan XL, Tian PX, Xu CX

- 616 Changes of cell membrane fluidity for mesenchymal stem cell spheroids on biomaterial surfaces

Wong CW, Han HW, Hsu SH

- 633 Combination of mesenchymal stem cells and three-dimensional collagen scaffold preserves ventricular remodeling in rat myocardial infarction model

Qazi REM, Khan I, Haneef K, Malick TS, Naeem N, Ahmad W, Salim A, Mohsin S

SYSTEMATIC REVIEWS

- 658 How mesenchymal stem cell cotransplantation with hematopoietic stem cells can improve engraftment in animal models

Garrigós MM, de Oliveira FA, Nucci MP, Nucci LP, Alves ADH, Dias OFM, Gamarra LF

LETTER TO THE EDITOR

- 680 Bone marrow mesenchymal stem cell treatment improves post-stroke cerebral function recovery by regulating gut microbiota in rats

Sheykhhasan M, Poondla N

ABOUT COVER

Editorial Board Member of *World Journal of Stem Cells*, Konstantinos I Papadopoulos, MD, PhD, Chairman, Chief Doctor, Director, Department of Research and Development, THAI StemLife, Bangkok 10310, Thailand.
kostas@thaistemlife.co.th

AIMS AND SCOPE

The primary aim of *World Journal of Stem Cells (WJSC, World J Stem Cells)* is to provide scholars and readers from various fields of stem cells with a platform to publish high-quality basic and clinical research articles and communicate their research findings online. *WJSC* publishes articles reporting research results obtained in the field of stem cell biology and regenerative medicine, related to the wide range of stem cells including embryonic stem cells, germline stem cells, tissue-specific stem cells, adult stem cells, mesenchymal stromal cells, induced pluripotent stem cells, embryonal carcinoma stem cells, hemangioblasts, lymphoid progenitor cells, etc.

INDEXING/ABSTRACTING

The *WJSC* is now abstracted and indexed in Science Citation Index Expanded (SCIE, also known as SciSearch®), Journal Citation Reports/Science Edition, PubMed, PubMed Central, Scopus, Biological Abstracts, BIOSIS Previews, Reference Citation Analysis, China National Knowledge Infrastructure, China Science and Technology Journal Database, and Superstar Journals Database. The 2022 Edition of Journal Citation Reports cites the 2021 impact factor (IF) for *WJSC* as 5.247; IF without journal self cites: 5.028; 5-year IF: 4.964; Journal Citation Indicator: 0.56; Ranking: 12 among 29 journals in cell and tissue engineering; Quartile category: Q2; Ranking: 86 among 194 journals in cell biology; and Quartile category: Q2. The *WJSC*'s CiteScore for 2021 is 5.1 and Scopus CiteScore rank 2021: Histology is 17/61; Genetics is 145/335; Genetics (clinical) is 42/86; Molecular Biology is 221/386; Cell Biology is 164/274.

RESPONSIBLE EDITORS FOR THIS ISSUE

Production Editor: Yan-Liang Zhang; Production Department Director: Xu Guo; Editorial Office Director: Jia-Ru Fan.

NAME OF JOURNAL

World Journal of Stem Cells

ISSN

ISSN 1948-0210 (online)

LAUNCH DATE

December 31, 2009

FREQUENCY

Monthly

EDITORS-IN-CHIEF

Shengwen Calvin Li, Carlo Ventura

EDITORIAL BOARD MEMBERS

<https://www.wjgnet.com/1948-0210/editorialboard.htm>

PUBLICATION DATE

August 26, 2022

COPYRIGHT

© 2022 Baishideng Publishing Group Inc

INSTRUCTIONS TO AUTHORS

<https://www.wjgnet.com/bpg/gerinfo/204>

GUIDELINES FOR ETHICS DOCUMENTS

<https://www.wjgnet.com/bpg/GerInfo/287>

GUIDELINES FOR NON-NATIVE SPEAKERS OF ENGLISH

<https://www.wjgnet.com/bpg/gerinfo/240>

PUBLICATION ETHICS

<https://www.wjgnet.com/bpg/GerInfo/288>

PUBLICATION MISCONDUCT

<https://www.wjgnet.com/bpg/gerinfo/208>

ARTICLE PROCESSING CHARGE

<https://www.wjgnet.com/bpg/gerinfo/242>

STEPS FOR SUBMITTING MANUSCRIPTS

<https://www.wjgnet.com/bpg/GerInfo/239>

ONLINE SUBMISSION

<https://www.f6publishing.com>



Basic Study

Combination of mesenchymal stem cells and three-dimensional collagen scaffold preserves ventricular remodeling in rat myocardial infarction model

Rida-e-Maria Qazi, Irfan Khan, Kanwal Haneef, Tuba Shakil Malick, Nadia Naeem, Waqas Ahmad, Asmat Salim, Sadia Mohsin

Specialty type: Cell and tissue engineering

Provenance and peer review: Invited article; Externally peer reviewed.

Peer-review model: Single blind

Peer-review report's scientific quality classification

Grade A (Excellent): A
Grade B (Very good): B, B
Grade C (Good): C, C
Grade D (Fair): D
Grade E (Poor): 0

P-Reviewer: Bagheri-Mohammadi S, Iran; Hassaan NA, Egypt; Prasetyo EP, Indonesia; Wu J, China

Received: March 18, 2022

Peer-review started: March 18, 2022

First decision: April 25, 2022

Revised: May 9, 2022

Accepted: July 8, 2022

Article in press: July 8, 2022

Published online: August 26, 2022



Rida-e-Maria Qazi, Irfan Khan, Tuba Shakil Malick, Waqas Ahmad, Asmat Salim, Stem Cell Laboratory, Dr. Panjwani Center for Molecular Medicine and Drug Research, ICCBS, University of Karachi, Karachi 75270, Sindh, Pakistan

Kanwal Haneef, Dr. Zafar H. Zaidi Center for Proteomics, University of Karachi, Karachi 75270, Sindh, Pakistan

Nadia Naeem, Dow Research Institute of Biotechnology and Biomedical Sciences (DRIBBS), Dow University of Health and Sciences, Ojha Campus, Karachi 74200, Sindh, Pakistan

Sadia Mohsin, Cardiovascular Research Center, Lewis Katz School of Medicine, Temple University, Philadelphia, PA 19140, United States

Corresponding author: Asmat Salim, PhD, Professor, Stem Cell Laboratory, Dr. Panjwani Center for Molecular Medicine and Drug Research, ICCBS, University of Karachi, Main University Road, Karachi 75270, Sindh, Pakistan. asmat.salim@iccs.edu

Abstract

BACKGROUND

Cardiovascular diseases are the major cause of mortality worldwide. Regeneration of the damaged myocardium remains a challenge due to mechanical constraints and limited healing ability of the adult heart tissue. Cardiac tissue engineering using biomaterial scaffolds combined with stem cells and bioactive molecules could be a highly promising approach for cardiac repair. Use of biomaterials can provide suitable microenvironment to the cells and can solve cell engraftment problems associated with cell transplantation alone. Mesenchymal stem cells (MSCs) are potential candidates in cardiac tissue engineering because of their multilineage differentiation potential and ease of isolation. Use of DNA methyl transferase inhibitor, such as zebularine, in combination with three-dimensional (3D) scaffold can promote efficient MSC differentiation into cardiac lineage, as epigenetic modifications play a fundamental role in determining cell fate and lineage specific gene expression.

AIM

To investigate the role of collagen scaffold and zebularine in the differentiation of

rat bone marrow (BM)-MSCs and their subsequent *in vivo* effects.

METHODS

MSCs were isolated from rat BM and characterized morphologically, immunophenotypically and by multilineage differentiation potential. MSCs were seeded in collagen scaffold and treated with 3 $\mu\text{mol/L}$ zebularine in three different ways. Cytotoxicity analysis was done and cardiac differentiation was analyzed at the gene and protein levels. Treated and untreated MSC-seeded scaffolds were transplanted in the rat myocardial infarction (MI) model and cardiac function was assessed by echocardiography. Cell tracking was performed by DiI dye labeling, while regeneration and neovascularization were evaluated by histological and immunohistochemical analysis, respectively.

RESULTS

MSCs were successfully isolated and seeded in collagen scaffold. Cytotoxicity analysis revealed that zebularine was not cytotoxic in any of the treatment groups. Cardiac differentiation analysis showed more pronounced results in the type 3 treatment group which was subsequently chosen for the transplantation in the *in vivo* MI model. Significant improvement in cardiac function was observed in the zebularine treated MSC-seeded scaffold group as compared to the MI control. Histological analysis also showed reduction in fibrotic scar, improvement in left ventricular wall thickness and preservation of ventricular remodeling in the zebularine treated MSC-seeded scaffold group. Immunohistochemical analysis revealed significant expression of cardiac proteins in DiI labeled transplanted cells and a significant increase in the number of blood vessels in the zebularine treated MSC-seeded collagen scaffold transplanted group.

CONCLUSION

Combination of 3D collagen scaffold and zebularine treatment enhances cardiac differentiation potential of MSCs, improves cell engraftment at the infarcted region, reduces infarct size and improves cardiac function.

Key Words: Mesenchymal stem cells; Myocardial infarction; Cardiac tissue engineering; Demethylating agent; Collagen scaffold; Zebularine

©The Author(s) 2022. Published by Baishideng Publishing Group Inc. All rights reserved.

Core Tip: This study was designed to elucidate the effect of the three-dimensional (3D) microenvironment provided by the use of natural collagen-based scaffold and DNA methyl transferase inhibitor, zebularine, on the cardiac differentiation of mesenchymal stem cells (MSCs) *in vitro* and cardiac regeneration *in vivo*. Collagen scaffold provides a native 3D microenvironment to MSCs and along with zebularine, enhances their cardiac differentiation potential. Transplantation of zebularine treated MSC-seeded collagen scaffold in the rat myocardial infarction (MI) model aids in improving cardiac function and preserves left ventricular remodeling. Translation of this research into clinics can be a better option for the treatment of MI.

Citation: Qazi REM, Khan I, Haneef K, Malick TS, Naeem N, Ahmad W, Salim A, Mohsin S. Combination of mesenchymal stem cells and three-dimensional collagen scaffold preserves ventricular remodeling in rat myocardial infarction model. *World J Stem Cells* 2022; 14(8): 633-657

URL: <https://www.wjgnet.com/1948-0210/full/v14/i8/633.htm>

DOI: <https://dx.doi.org/10.4252/wjsc.v14.i8.633>

INTRODUCTION

Mesenchymal stem cells (MSCs) have been shown to regenerate many damaged tissues[1-3]. These cells have several advantages including immuno-modulatory properties, high proliferation and migration rates[4]. Several studies have shown that MSCs are an ideal cell source for clinical applications[5], including cardiac regeneration. However, transplantation of stem cells to the damaged tissue may lead to undesired differentiation. Therefore, pre-differentiation of stem cells into specialized cell types before transplantation can serve as a better strategy for treatment[2].

Cardiac fate determination is controlled by various agents, such as, cytokines, growth factors, small molecules and microRNAs[1,4]. DNA methylation is a key component of epigenetic machinery that

regulates gene expression[6]. DNA methyltransferase inhibitors can change the epigenetic landscape thus promoting differentiation[7,8]. DNA methyltransferase inhibitor, 5-azacytidine (5-aza) is extensively used in the cardiac differentiation of stem cells[1,9,10]. Another demethylating agent, zebularine is a cytidine analog that can inhibit DNA methyltransferase through covalent binding[11]. Unlike 5-aza, zebularine shows minimal toxicity in cell culture and animal models[11,12]. Several studies have shown the positive effect of zebularine in mesodermal, hepatic and cardiac differentiation [10,11,13].

Human heart development is a complex process that involves various signaling molecules along with other factors. These molecules and three-dimensional (3D) configuration are two important factors that define heart tissue structure and function[14]. The 3D microenvironment is an essential factor that determines cell behavior and fate. Studies have shown that stem cell-extracellular matrix (ECM) interactions influence cardiomyogenic differentiation of stem cells[1]. Collagen is the main structural protein that maintains the biological and structural integrity of ECM. Collagen scaffold has been shown to enhance the expression of cardiomyocyte-specific proteins in bone marrow (BM)-MSCs[15]. Furthermore, collagen scaffolds seeded with MSCs have shown structural support to the injured heart [1]. Despite the advancement in tissue engineering technology, development of an efficient, controlled and reproducible protocol for 3D differentiation is always challenging[14].

The present study aims to investigate the combined effect of an epigenetic modifier, zebularine, and a 3D collagen scaffold to enhance the cardiac differentiation of MSCs. The effectiveness of *in vitro* pre-differentiated cells was assessed in the *in vivo* rat myocardial infarction (MI) model. The proposed cardiomyocyte-differentiation protocol represents an efficient model system to investigate the mechanisms that determine cardiac fate and may provide a source of differentiated cardiac cells for drug screening and cell based therapies.

MATERIALS AND METHODS

Flow chart of experimental design is presented in Figure 1.

Animal care and ethical approval

Wistar rats (150-250 gm) were used for BM isolation and MI model development. Ethical approval was obtained from the Institutional Animal Care and Use Committee, Dr. Panjwani Center for Molecular Medicine and Drug Research, International Center for Chemical and Biological Sciences, University of Karachi. Experimental procedures were carried out according to the international guidelines for care and use of laboratory animals under protocol number 2020-006. Animals were kept in individual cages in a room maintained at 12 h light: 12 h dark cycle, 22 °C ± 2 °C temperature and 55 ± 5% relative humidity, and provided with free access to food and filtered water.

Isolation and expansion of MSCs

Rats were euthanized with an over dose of sodium pentobarbital. BM was isolated according to the protocol described previously[10]. Briefly, rat skin was sterilized with 70% ethanol. Rats were dissected to separate the bones. Bones were cut from the edges using sterile surgical instruments under biosafety cabinet (ESCO, Singapore) and BM was flushed using complete Dulbecco's Modified Eagle's Medium (DMEM) containing 10% fetal bovine serum (Gibco, ThermoFisher Scientific, United States), 100 µg/mL streptomycin, 100 units/mL penicillin, 4 mmol/L L-glutamine and 1 mmol/L sodium pyruvate. BM was transferred to T75 tissue culture flasks and incubated in CO₂ incubator (NuAire, United States). Non-adherent hematopoietic cells were removed by changing the medium after 3-4 d and adherent MSCs were allowed to proliferate. Cells were sub-cultured when they reached 80%-90% confluence. MSCs of passage 1 were used in subsequent experiments.

Characterization of MSCs

MSCs were characterized by morphological examination under phase contrast microscope, by immunostaining using fluorescence microscopy and flow cytometry and by trilineage differentiation potential, as described previously[10].

Immunostaining: MSCs were cultured in chambered glass slides (IWAKI, Japan) at a cell count of 10000 cells/mL/chamber. After overnight incubation, medium was aspirated, cells were washed with PBS, fixed with 4% paraformaldehyde (PFA) for 10 min and permeabilized with 0.1% triton X-100. Cells were washed with PBS and non-specific binding sites were blocked with blocking solution (2% BSA in PBS and 0.1% Tween20) for 1 h at 37 °C in the humidified environment. Cells were incubated with primary antibodies against CD29, CD44, CD90, CD117, vimentin and CD45. After overnight incubation at 4 °C, cells were washed with PBS to remove unbound primary antibodies and incubated with Alexa Fluor 546 goat anti-mouse secondary antibody for 1 h at 37 °C, followed by washing with PBS 4-5 times. Counter-staining was performed with 0.5 µg/mL 4',6-diamidino-2-phenylindole (DAPI) to observe cell nuclei. Finally, cells were washed and mounted using fluorescence mounting medium (Merck, Germany).

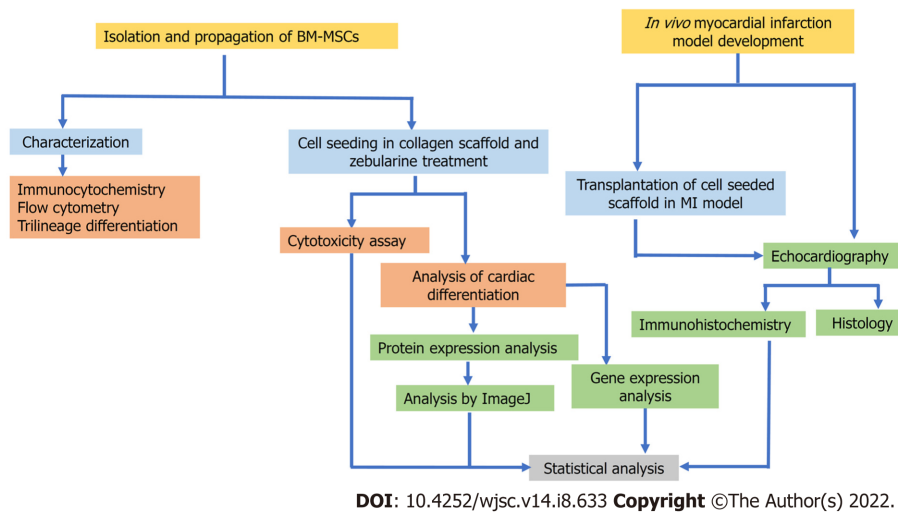


Figure 1 Experimental design. Flow chart representing the experimental design of the study. BM-MSC: Bone marrow-mesenchymal stem cell; MI: Myocardial infarction.

Mounted slides were observed under fluorescence microscope (90i and NIE, Nikon, Japan).

For immunophenotypic characterization by flow cytometry, cells were detached and washed with FACS buffer (1% BSA, 0.1% Na-azide and 1 mmol/L EDTA). Cells were incubated with CD29, CD44 and CD90 for 2 h at 37 °C, and after washing, incubated with Alexa Fluor 488 goat anti-mouse secondary antibody for 1 h at 37 °C. Cells were washed and analyzed through FACS Calibur (Becton Dickinson, United States) using CellQuest Pro software. Isotype labeled cells were used as control.

Trilineage differentiation: MSCs were grown in 6 well plates using complete DMEM. For osteogenic differentiation, MSCs were grown in osteogenic induction medium (complete DMEM containing 0.2 mmol/L L-ascorbic acid-2-phosphate, 0.1 µmol/L dexamethasone, and 10 mmol/L glycerol-2-phosphate) for 28 d. Alizarin Red S staining was performed to detect mineral deposits. For adipogenic differentiation, MSCs were grown in adipogenic induction medium (complete DMEM containing 1 µmol/L dexamethasone, 200 µmol/L indomethacin, and 10 µg/mL insulin) for 21 d. Differentiated cells were stained with Oil Red O stain for the detection of lipid filled vacuoles inside the cytoplasm. For chondrogenic differentiation, MSCs were cultured in chondrogenic induction medium (complete DMEM containing 1 µmol/L dexamethasone, 100 mmol/L ascorbic acid, 20 ng/mL TGF-β, and 10 ng/mL insulin) for 21 d and then stained with Alcian Blue stain for the detection of glycosaminoglycans.

In vitro studies

MSC seeding in collagen scaffold: MSCs were seeded in the collagen scaffold (Collagen type 1, non-denatured, Pangen, URGO, France) 2.5 cm² × 3.5 cm² in size, cut into 2 pieces; one piece was transferred to a 6 well plate. MSCs were detached from the flask and counted using a hemocytometer; 1 million MSCs suspended in medium were seeded in the scaffold. When the cells were adsorbed, the scaffold was incubated in the CO₂ incubator to allow complete cell penetration inside the scaffold. After 1 h of incubation, 2 mL of complete DMEM was carefully added to the scaffold-containing well and the cell-seeded scaffold was incubated at 37 °C for a specified time duration.

Scanning electron microscopy: Scanning electron microscopy (SEM) analyses for the soaked collagen scaffold (without cell seeding) and MSC-seeded collagen scaffold were performed after 21 d of cell seeding. Collagen scaffolds were washed with PBS and fixed in 2.5% glutaraldehyde solution overnight at 4 °C. Dehydration of fixed samples was performed using ascending ethanol series (starting from 30% ethanol) and freeze-drying. Samples were mounted, sputter coated with gold palladium and observed under analytical SEM (JSM-6380A, JEOL) using 10 and 15 kV accelerating voltages.

Zebularine treatment: MSCs were treated with zebularine at a concentration of 3 µmol/L in three different ways: Treatment type 1: MSCs were first treated with zebularine for 48 h, and then seeded in the collagen scaffold; treatment type 2: Zebularine was added to the MSC suspension (after detachment) and then treated cells were seeded in the collagen scaffold; treatment type 3: MSCs were first seeded in the collagen scaffold and then zebularine was added with the medium. For control, only untreated MSCs were seeded in the scaffold. All treated and untreated MSC-seeded scaffolds were incubated for 48 h and cytotoxicity analysis was performed.

Cytotoxicity analysis: MTT cell viability assay was performed to determine the cytotoxicity of 3 $\mu\text{mol/L}$ zebularine on MSC-seeded scaffold. Treated and untreated MSC-seeded scaffolds were washed 2-3 times with PBS after aspirating the culture medium. When the medium completely diffused out from the scaffolds, 10% MTT solution was added and the scaffolds were incubated for 4 h in the CO_2 incubator. The scaffolds were carefully transferred to separate 15 mL falcon tubes and 2 mL DMSO was added to each tube. Formazan crystals that formed inside the scaffold were dissolved in DMSO by vigorous pipetting and vortexing. Tubes were then centrifuged at $12000 \times g$ for 15 min and the supernatant was transferred to a 96 well plate. The plate was read at 570 nm using spectrophotometer (Thermo Scientific Mutiskan GO, Waltham, United States).

Analysis of cardiac differentiation: After 48 h of treatment as described earlier, zebularine was removed from type 2 and type 3 treatment groups. Scaffolds were washed with PBS and then complete DMEM was added. Treated and untreated MSC-seeded scaffolds were incubated for a further 19 d and medium was changed after every 3 d. After a total of 21-d incubation, both treated and untreated MSC-seeded scaffolds were harvested for gene and protein expression analyses.

Gene expression analysis: MSC-seeded collagen scaffolds were washed three times with PBS to completely remove the medium and crushed in liquid nitrogen using sterile mortar and pestle. The crushed scaffold was collected in microfuge tubes and RNA was isolated using EasyPure RNA kit (TransGen Biotech Co. Ltd, China) according to manufacturer's protocol. RNA was quantified using UV-Vis Spectrophotometer (NanoDrop 2000, Thermo Scientific, United States) and 1 μg of isolated RNA was used to synthesize cDNA using RevertAid First Strand cDNA Synthesis Kit (Thermo Scientific, United States) according to the manufacturer's instructions. cDNA was amplified using cardiac specific gene primers, listed in Table 1, by quantitative real-time polymerase chain reaction (qPCR) (CFX96 Touch Real-Time PCR Detection System, Bio-Rad, United States). Gene amplification program comprised of initial denaturation at 95 $^{\circ}\text{C}$ for 10 min, followed by 40 cycles of denaturation at 95 $^{\circ}\text{C}$ for 15 s and annealing at 58 $^{\circ}\text{C}$ for 1 min, then a melting curve was run to check the specificity of the amplified products. Glyceraldehyde-3-phosphate dehydrogenase was used as the reference gene to normalize gene expression. $\Delta\Delta\text{Ct}$ method was used to calculate the fold change. $\Delta\Delta\text{Ct}$ is the difference between ΔCt of treated and control samples, whereas ΔCt is the difference in Ct values of gene of interest and endogenous control (a house keeping gene).

Protein expression analysis: MSC-seeded collagen scaffolds were washed with PBS and fixed in 4% PFA. Each scaffold was then transferred to a mold containing optimal cutting temperature (OCT) medium (Shandon, Cryomatrix, Thermo, United States), and frozen at -20 $^{\circ}\text{C}$. 15 μm sections were made from the frozen blocks of the scaffolds using cryostat machine (Shandon, Thermo Electron Corporation, United States). The sections were permeabilized with 0.1% triton X-100 and stained with cardiac specific primary antibodies GATA4, cardiac troponin T (cTnT), and Nkx2.5 using the same protocol as described for the characterization of MSCs. Fluorescent images were processed by Adobe Photoshop and ImageJ software was used for the quantitative analysis.

In vivo studies

Experimental groups: Animals were divided into 5 groups ($n = 6$) to evaluate *in vivo* cardiac regeneration: (1) Sham control; (2) MI model; (3) MI + collagen scaffold transplantation; (4) MI + MSC-seeded scaffold transplantation; and (5) MI + zebularine treated MSC-seeded scaffold transplantation.

MI model: MI model was developed by the procedure described in our previous study[16]. Briefly, rats were anesthetized using xylazine and ketamine (7 mg/kg and 60 mg/kg body weight, respectively). Endotracheal intubation was performed using rodent ventilator to initiate artificial ventilation. Left thoracotomy was performed through anterolateral 4th intercostal space, and retractor was used to expose the heart. Left anterior descending coronary artery (LAD) was carefully located and ligated with the help of 6-0 prolene suture (Ethicon, United States) 2-3 mm below the edge of the left atrium. Success in artery occlusion was evident with the immediate color change of the left ventricle from red to pale color. Chest cavity was closed and animal was given diclofenac sodium (25 mg/mL) and antibiotics (penicillin and streptomycin 10000 U/mL) subcutaneously. Animals were monitored till they regained consciousness. For sham control group, the suture was passed through LAD artery without ligation.

Collagen scaffold processing and transplantation: For the collagen scaffold only group, collagen scaffold (1.1 $\text{cm}^2 \times 1.1 \text{ cm}^2$) was soaked in complete DMEM prior to transplantation. For the MSC-seeded scaffold group, 1 million MSCs were seeded in the scaffold and for zebularine treated group, type 3 treatment method was selected. In all cases, scaffolds were incubated for 15 d with a medium change after every 3 d. After 15 d of incubation, scaffolds were washed with PBS three times to completely remove the medium, and transplanted immediately after LAD ligation in the infarcted region of the heart, as described previously[17]. Scaffold was held at its position by 6-0 prolene suture. Suture was carefully used so that it could not go deep into the myocardium to avoid blockage of other branches of the LAD artery. The rest of the procedure was the same as described for the MI model development. To

Table 1 Details of cardiac specific gene primers

No.	Gene primers	Primer sequences (5'-3')	Product size
1	GAPDH (F)	GGAAAGCTGTGGCGTGATGG	414
	GAPDH (R)	GTAGGCCATGAGGTCCACCA	
2	GATA4 (F)	TCTCACTATGGGCACAGCAG	245
	GATA4 (R)	CCGAGCAGGAATTTGAAGAG	
3	cTnT (F)	TTCGACCTGCAGGAAAAGTT	206
	cTnT (R)	GTGCCTGGCAAGACCTAGAG	
4	Nkx2.5 (F)	ACCGCCCTACATTTTATCC	230
	Nkx2.5 (R)	GACAGGTACCGCTGTTGCTT	
5	Connexin43 (F)	GCTCCACTCTCGCCTATGTC	234
	Connexin43 (R)	GAGTTCATGTCCAGCAGCAA	
6	cMHC (F)	GCAGGTGGATGATCTGGAGG	116
	cMHC (R)	CCATGATGCTCTCCTGGGTC	
7	Tbx20 (F)	TGATTCTGGCCCTAGGAAAGTG	100
	Tbx20 (R)	TGAGCCTGGGTTCTCCATAAAG	
8	ANF (F)	CCTGCGAAGATCAAGCTGC	110
	ANF (R)	GCTCGAGCAGATTTGGCTG	
9	cTnI (F)	GACCTGCGTGGCAAGTTTA	139
	cTnI (R)	CCTCCTTCTTACCTGCTTG	
10	Mef2c (F)	GAGATACCCACAACACACGC	117
	Mef2c (R)	GAGTGGAAATTCGTTCCGGTG	

F: Forward; R: Reverse; GAPDH: Glyceraldehyde-3-phosphate dehydrogenase; cTnT: Cardiac troponin T; cMHC: Cardiac myosin heavy chain; Tbx20: T-box transcription factor 20; ANF: Atrial natriuretic factor; cTnI: Cardiac troponin I; Mef2C: Myocyte-specific enhancer-binding factor 2C.

track the engrafted cells in the untreated and treated MSC-seeded scaffold transplanted groups, MSCs were labeled with DiI cell labeling dye (Invitrogen, United States) as *per* manufacturer's protocol before seeding into the scaffold.

Cardiac function analysis by echocardiography: *In vivo* cardiac function was assessed by echocardiography at 2-, 4- and 6-wk post-surgery using Echo machine (Aloka, United States) equipped with 7-MHz transducer. 2D bright mode (B-mode) and motion mode (M-mode) scans were recorded using parasternal long axis view at the level of papillary muscles. Anatomical parameters of the left ventricle such as left ventricular internal systolic and diastolic dimensions (LVIDs and LVIDd) were measured using M-mode tracings. Measurements were based on three consecutive cardiac cycles averaged for calculation of the parameters. Percent ejection fraction (%EF) and fractional shortening (%FS), end diastolic and systolic volumes (EDV and ESV) and stroke volume were calculated by in-built software of the echo machine.

Histological analysis: Rats were anesthetized after 6 wk of surgery, perfused with PBS, and fixed with 4% PFA. Hearts were excised and immersed in 4% PFA overnight, dehydrated in ascending alcohol baths, immersed in xylene and xylene-paraffin mixture and embedded in paraffin. Paraffin blocks were transversely cut into 4 μ m thick sections using microtome and Masson's trichrome staining was performed according to the manufacturer's protocol. Stained sections were observed under bright field microscope for histological examination.

Immunohistochemistry: For the analysis of blood vessels in the cardiac tissue, paraffin embedded tissue sections were deparaffinized and antigen retrieval was done using citrate buffer. Sections were permeabilized and stained with an anti α -smooth muscle actin (α -SMA) antibody. Alexa Fluor 488 anti-mouse secondary antibody was used for detection and DAPI was used for nuclei staining.

For tracking of cells in the implanted scaffold, DiI labeled MSC-seeded scaffold transplanted rat hearts were fixed in 4% PFA for 4 h, transversely cut from the center, and then snap frozen in molds

containing OCT medium. Frozen tissue blocks were sliced into 15 $\mu\text{mol/L}$ thick sections using cryostat machine. DiI labeled tissue sections were carefully examined under fluorescence microscope for the presence of fluorescent cells, permeabilized with triton-X 100, and non-specific binding sites were blocked with blocking solution. Sections were then stained with cardiac specific antibodies, cardiac myosin heavy chain (cMHC), cardiac troponin I (cTnI) and cTnT. Alexa Fluor 488 goat anti-mouse secondary antibody was used for detection and DAPI was used for nuclei staining. Slides were observed under fluorescence microscope and images were analyzed by ImageJ software to measure the fluorescence intensities to determine cardiac differentiation potential of the transplanted MSCs.

Statistical analysis

Statistical analysis was performed using SPSS software (IBM, SPSS statistics, version 26, United States). Independent sample *t* test analysis was performed for comparison between two groups, and one-way analysis of variance with post-hoc Bonferroni corrections for comparison between multiple groups. Data from all experiments were expressed as mean \pm standard error of mean and differences between the groups were considered statistically significant at $P < 0.05$ (where $^aP < 0.05$, $^bP < 0.01$, and $^cP < 0.001$). Degrees of freedom for *in vitro* and *in vivo* experiments were calculated by SPSS software.

RESULTS

Morphology of MSCs

Rat BM culture showed round morphology and a mixed population of floating cells at the time of isolation. MSCs adhered to the surface of the culture flask and expanded gradually. After 10 d, passage 0 (P0) cells were fully grown and exhibited fibroblast like morphology. P0 cells were sub-cultured by trypsinization to get the homogeneous population of MSCs. MSC culture at respective time points is shown in Figure 2A.

Characterization of MSCs

Immunophenotypic profile: Passage 1 MSCs were characterized by immunostaining and analyzed by fluorescence microscopy and flow cytometry. Cells stained with MSC specific markers CD29, CD44, CD90, CD117 and vimentin showed positive expression, while CD45, a hematopoietic marker, showed negative expression (Figure 2B). Flow cytometric analysis showed that $> 90\%$ of the cells expressed CD29, CD44 and CD90, further confirming the presence of MSCs in culture (Figure 2C).

Trilineage differentiation: Trilineage differentiation potential of MSCs was confirmed by the differentiation of MSCs into osteogenic, adipogenic and chondrogenic lineages. Osteogenic differentiation was confirmed by the presence of mineral deposits in MSC culture. Differentiated cells stained orange-red, while large mineral deposits appeared dark red after Alizarin Red S staining. Adipogenic differentiation was evaluated by intracellular accumulation of lipid vacuoles in the treated cells, which turn bright red after staining with Oil Red O stain. Chondrogenic differentiation was analyzed by the accumulation of ECM that stained intense blue after Alcian Blue staining (Figure 2D).

SEM analysis

SEM analysis revealed the porous structure of the dry collagen scaffold (Figure 3A). Freeze-dried, medium soaked scaffold also showed the interconnected pores on the surface and deep inside the scaffold (Figure 3B). When MSC-seeded scaffold was observed after 21 d, cell attachment was observed in between the scaffold fibers (Figure 3C).

Cell viability by MTT assay

Percent viability calculated by the absorbance values obtained through MTT assay revealed that zebularine at 3 $\mu\text{mol/L}$ concentration was non cytotoxic for MSCs in all treatment groups (Figure 3D). Statistical analysis showed significant increase in cell viability of type 2 treatment group, as compared to control. However, there is no significant reduction in the cell viability in any treatment group, hence no cytotoxic effect of zebularine treatment. This is also confirmed by the calculated degrees of freedom (Table 2).

Cardiac differentiation analysis: Gene expression

Cardiac gene expression profile revealed variable results in different treatment types. When compared to control, cTnI, Nkx2.5 ($P < 0.01$) and myocyte-specific enhancer-binding factor 2C (Mef2C) ($P < 0.05$) genes were significantly upregulated in type 1 treatment group; GATA4, Nkx2.5, cMHC ($P < 0.01$) and cTnI ($P < 0.001$) genes were significantly increased in type 2 treatment group; and atrial natriuretic factor (ANF) ($P < 0.05$), cTnT, Nkx2.5, T-box transcription factor 20 (Tbx20), connexin43 ($P < 0.01$) and cMHC ($P < 0.001$) genes showed significant upregulation in type 3 treatment group. Comparison among these treatment groups revealed significantly increased expression of cTnI ($P < 0.05$), GATA4 ($P < 0.01$) and cMHC ($P < 0.001$) in type 2 group as compared to type 1 group; ANF ($P < 0.05$) and cTnT ($P < 0.01$)

Table 2 Degrees of freedom (*in vitro* experiments)

Experiment	Degrees of freedom (F)
MTT assay	$F_{3,8} = 404.312$
Gene expression	
GATA4	$F_{3,8} = 14.883$
cTnT	$F_{3,8} = 15.870$
cTnI	$F_{3,8} = 34.024$
Nkx2.5	$F_{3,8} = 15.901$
cMHC	$F_{3,8} = 85.276$
Connexin43	$F_{3,8} = 19.912$
ANF	$F_{3,8} = 7.510$
Tbx20	$F_{3,8} = 22.877$
Mef2C	$F_{3,8} = 7.660$
Protein expression	
Percent positive cells	
GATA4	$F_{3,8} = 26.609$
cTnT	$F_{3,8} = 46.829$
Nkx2.5	$F_{3,8} = 513.556$
Fluorescence intensity	
GATA4	$F_{3,8} = 9.696$
cTnT	$F_{3,8} = 28.438$
Nkx2.5	$F_{3,12} = 59.175$

cTnT: Cardiac troponin T; cTnI: Cardiac troponin I; cMHC: Cardiac myosin heavy chain; ANF: Atrial natriuretic factor; Tbx20: T-box transcription factor 20; Mef2C: Myocyte-specific enhancer-binding factor 2C.

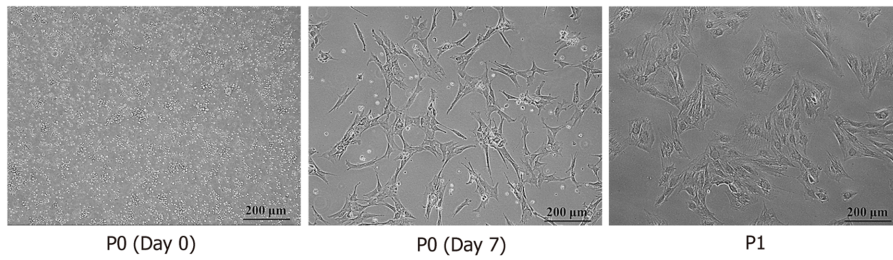
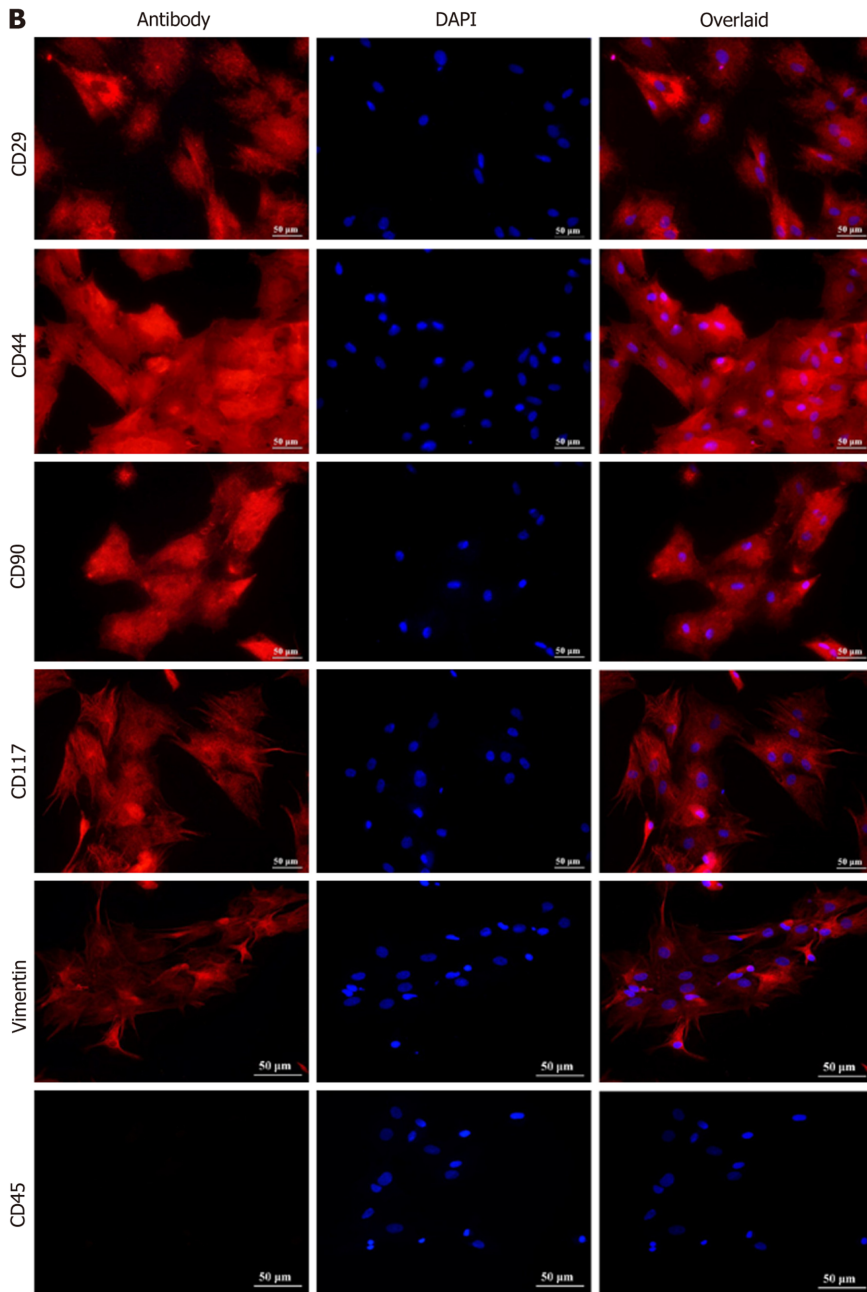
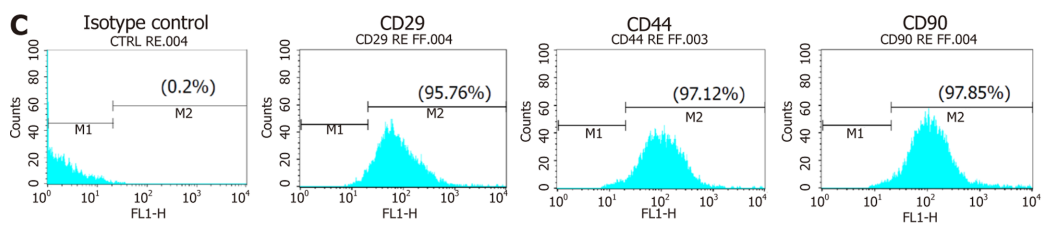
were significantly upregulated in type 3 treatment group as compared to type 1 group; Tbx20 and connexin43 ($P < 0.01$) expressions were significantly increased in type 3 treatment group when compared to both type 1 and 2 treatment groups, while the reverse is true for cMHC ($P < 0.001$) expression (Figure 4). Calculated degrees of freedom also confirmed that there is significant effect of zebularine treatment on the gene expression profile of MSC-seeded collagen scaffolds (Table 2).

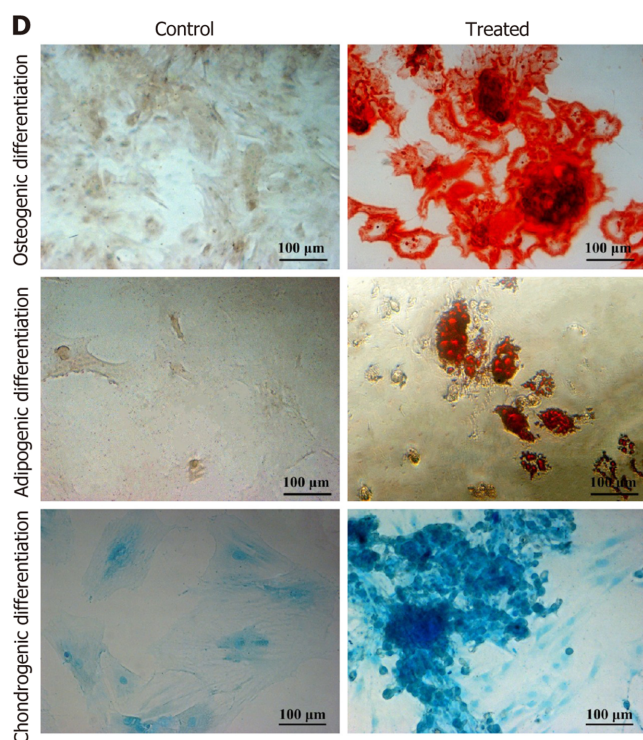
Cardiac differentiation analysis: Protein expression

Immunophenotypic profile showed the positive expression of GATA4, cTnT and Nkx2.5 in all treatment groups. Quantification of protein expression revealed that the percentages of GATA4, cTnT and Nkx2.5 were significantly high in all treatment groups as compared to the control group. Fluorescence intensity in the case of GATA4 was significantly high ($P < 0.01$) in the type 2 treated group as compared to control, while that of cTnT was significantly high in all treatment groups, however it is more pronounced in the type 2 and 3 treatment groups ($P < 0.001$). Same is the case with Nkx2.5, but the type 3 treatment showed more pronounced results when compared with the type 1 treatment group (Figure 5). Calculated degrees of freedom also confirmed that there is a significant effect of zebularine treatment on the protein expression of MSC-seeded collagen scaffolds (Table 2).

Cell-seeded scaffold: In vivo analysis

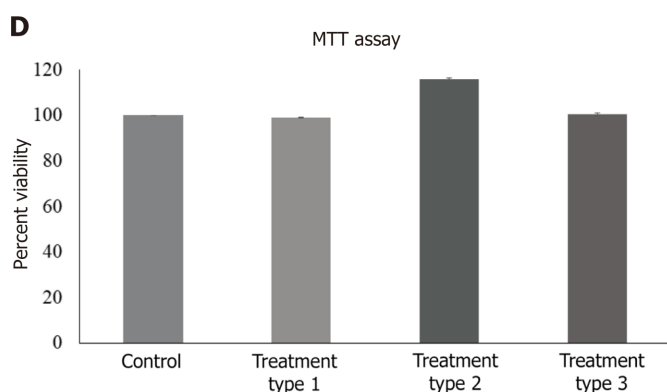
Macroscopic evaluation of isolated rat hearts: Collagen scaffold was transplanted immediately after the MI model development (Figure 6A), and the hearts were isolated after 6 wk of surgery, for macroscopic and histological evaluation. Macroscopic evaluation showed a major difference in the appearance among all the five groups. Hearts from the sham control group appeared normal, exhibiting healthy myocardium, whereas the left ventricle of the infarcted heart was covered with white fibrous scar. Collagen scaffold patch integrated into the left ventricular wall as shown in the other three groups. However, MSC-seeded scaffold transplanted heart exhibited an extensive network of functional blood vessels running through the integrated scaffold patch (Figure 6B).

A

B

C




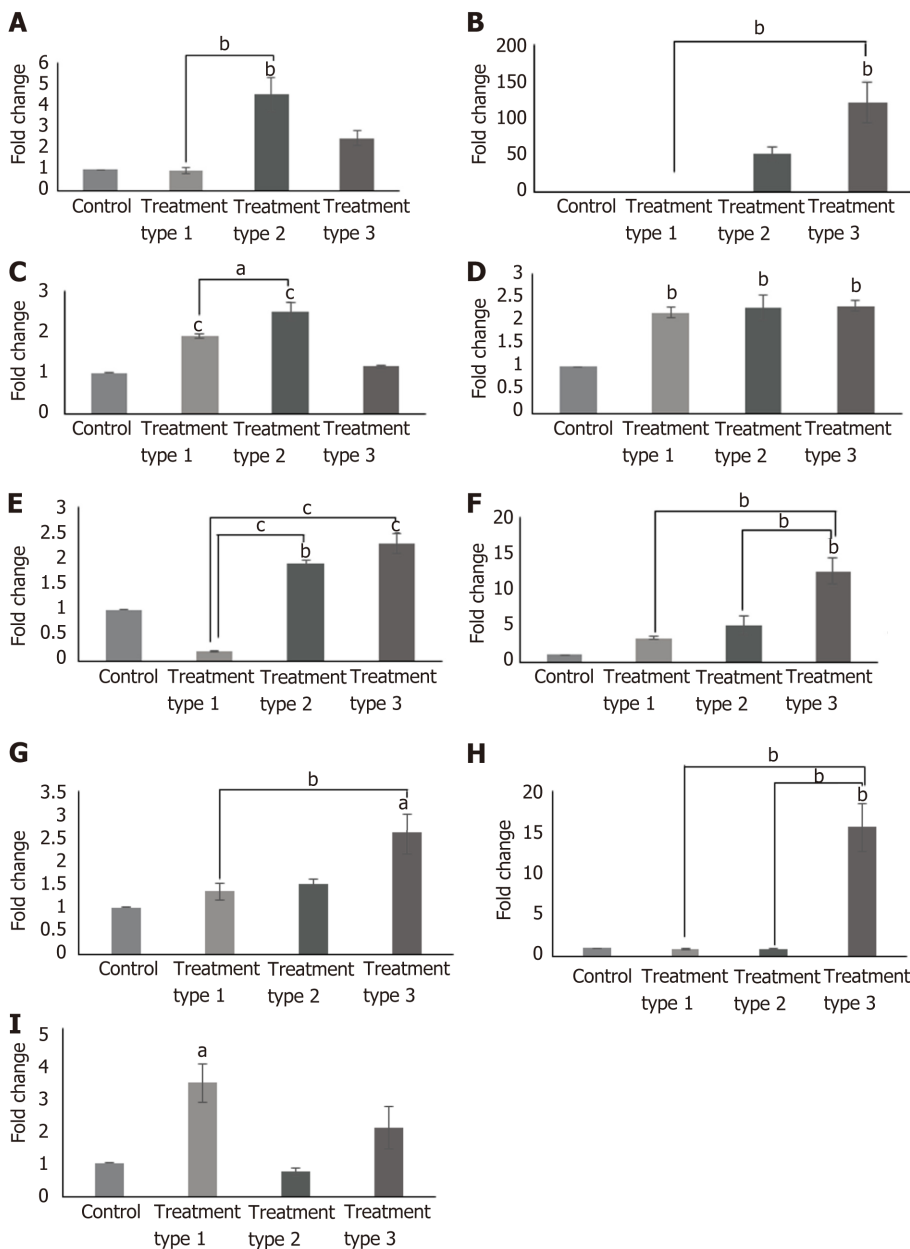
DOI: 10.4252/wjsc.v14.i8.633 Copyright ©The Author(s) 2022.

Figure 2 Isolation and characterization of mesenchymal stem cells. A: Passage 0 and Passage 1 mesenchymal stem cells (MSCs) in culture showing plastic adherence and fibroblast like appearance, and homogeneous population; B: Immunocytochemical analysis showing positive expression of CD29, CD44, CD90, CD117, vimentin, and negative expression of CD45 which is a hematopoietic marker; C: Flow cytometric analysis showing > 95% positive expression of MSC specific surface markers CD29, CD44, CD90; D: Trilineage differentiation analysis of MSCs by Alizarin Red S, Oil Red O and Alcian Blue staining showing the ability of MSCs to differentiate into osteogenic, adipogenic and chondrogenic lineages, respectively. DAPI: 4',6-diamidino-2-phenylindole.



DOI: 10.4252/wjsc.v14.i8.633 Copyright ©The Author(s) 2022.

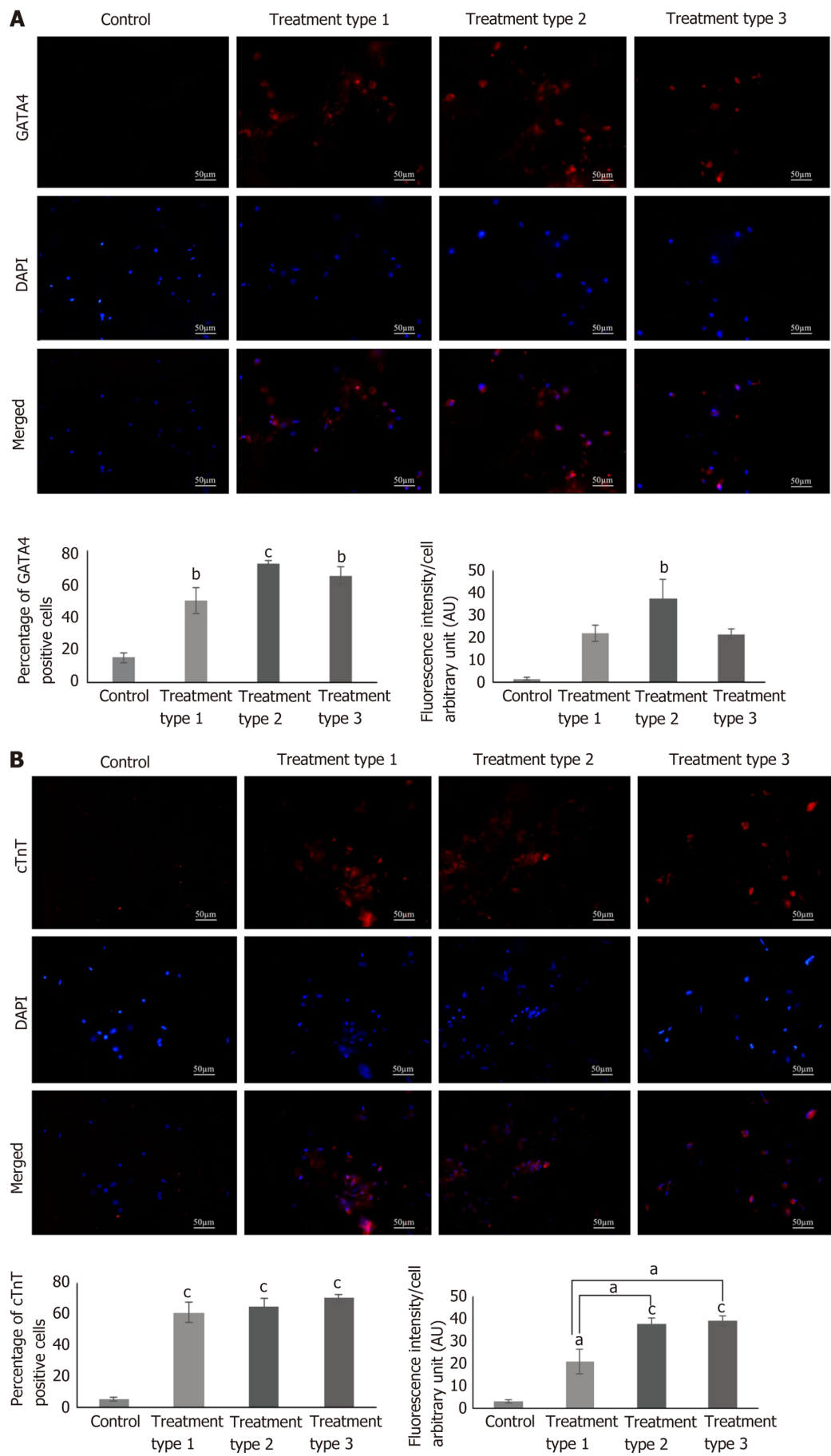
Figure 3 Scanning electron microscopy and cytotoxicity analysis. A-C: Scanning electron microscopy analysis showing mesh like fiber network of (A) dry collagen scaffold, (B) collagen scaffold soaked in medium, and (C) spherical shaped mesenchymal stem cells (MSCs) in the scaffold; D: Cytotoxicity analysis of zebularine (3 μmol/L) treated MSC-seeded scaffolds. Bar graphs represent viable cells in all treatment groups as compared to untreated MSC-seeded collagen scaffold. Data is presented as mean ± standard error of mean with significance level $^*P < 0.05$.



DOI: 10.4252/wjsc.v14.i8.633 Copyright ©The Author(s) 2022.

Figure 4 Gene expression analysis of cardiac markers. Bar graphs representing fold change of cardiac specific genes, GATA4, cardiac troponin T (cTnT), cardiac troponin I (cTnI), Nkx2.5, cardiac myosin heavy chain (cMHC), connexin43, atrial natriuretic factor (ANF), T-box transcription factor 20 (Tbx20), and myocyte-specific enhancer-binding factor 2C (Mef2C) in different types of zebularine treated mesenchymal stem cell-seeded scaffolds compared to untreated control. A: GATA4; B: cTnT; C: cTnI; D: Nkx2.5; E: cMHC; F: Connexin43; G: ANF; H: Tbx20; I: Mef2C. GATA4, cTnT, connexin43, ANF, Tbx20, and cMHC showed significant increase in type 3 treatment as compared to control and other groups. Data is presented as mean \pm standard error of mean with significance level $^aP < 0.05$ (where $^aP < 0.05$, $^bP < 0.01$, $^cP < 0.001$).

Cardiac function analysis: Echocardiographic analysis showed a significant gradual increase in the LVIDs in the MI group after 2, 4 and 6 wk and significant gradual reduction in the %EF and %FS as compared to sham control ($P < 0.001$). LVIDd was also gradually increased, particularly 6 wk post infarction ($P < 0.05$), whereas ESV was significantly increased after 4 and 6 wk of MI induction as compared to sham control ($P < 0.01$ and $P < 0.001$, respectively). These results demonstrated functional impairment of the left ventricle and successful establishment of the MI model. When the treated groups were compared with the MI group, no improvement was observed in LVIDd at any time point, whereas LVIDs was significantly reduced in the zebularine treated MSC-seeded scaffold transplanted group after 4 wk ($P < 0.01$) and 6 wk ($P < 0.001$). There was no significant reduction of LVIDs in the collagen scaffold transplanted group at any time point. The MSC-seeded scaffold group showed significant reduction only after 6 wk of transplantation ($P < 0.001$). %EF and %FS were significantly improved in all treated groups compared to the MI group, but more significant improvement was observed in the zebularine treated group, as indicated by comparison with the sham control. EDV and SV showed no



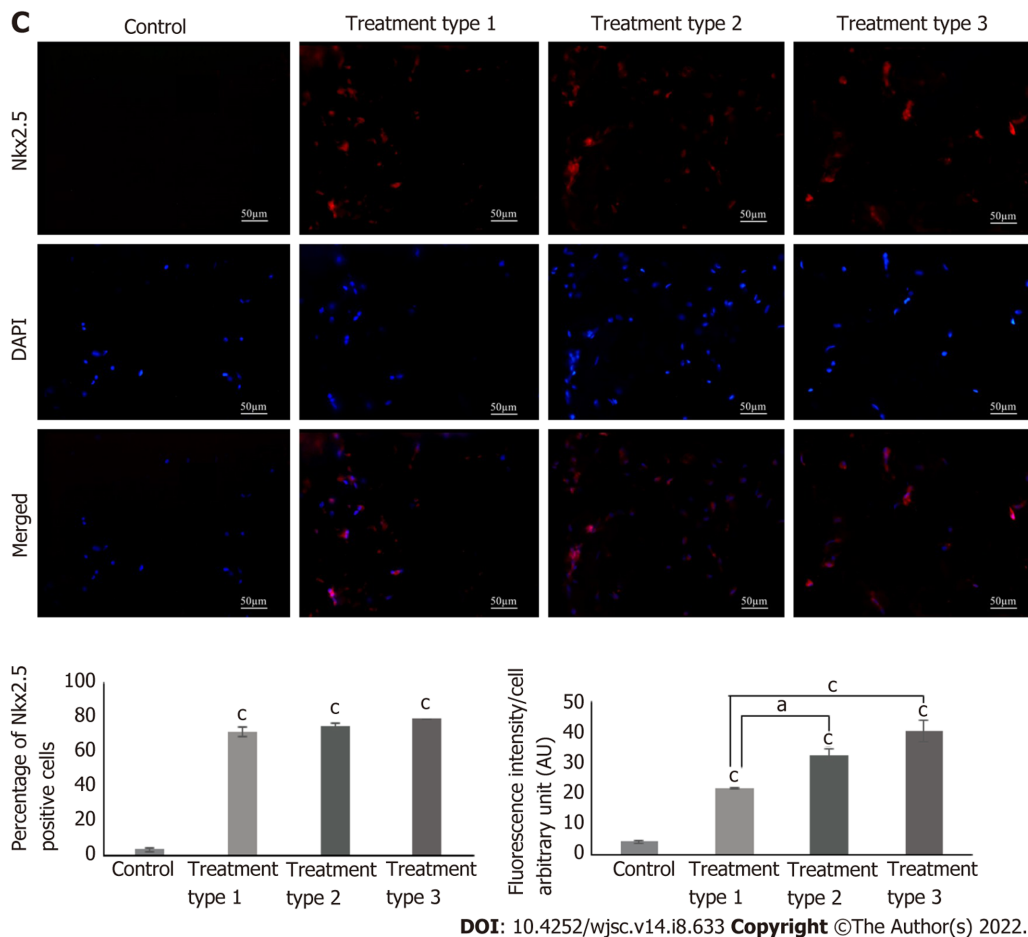


Figure 5 Protein expression analysis of cardiac markers. A: GATA4; B: Cardiac troponin T (cTnT); C: Nkx2.5. Fluorescence images showing the expression of cardiac specific proteins GATA4, cTnT, and Nkx2.5 in frozen sections of zebularine treated mesenchymal stem cells (MSC)-seeded collagen scaffold. Corresponding bar graphs representing the percentage of positive cells and their respective fluorescence intensities in treated and untreated MSC-seeded collagen scaffolds. Data is presented as mean \pm standard error of mean with significance level ^a $P < 0.05$ (where ^a $P < 0.05$, ^b $P < 0.01$, ^c $P < 0.001$). cTnT: Cardiac troponin T; DAPI: 4',6-diamidino-2-phenylindole.

significant improvement at any time point in all treatment groups compared to the MI group. ESV was significantly reduced in only the scaffold and MSC-seeded scaffold groups after 6 wk ($P < 0.01$), but the zebularine treated group showed significant reduction after 4 wk ($P < 0.01$) which was further reduced after 6 wk ($P < 0.001$) as compared to MI (Figure 7). Table 3 summarizes mean values of echocardiographic parameters. Calculated degrees of freedom also showed similar pattern (Table 4).

Histological examination

Cross-sections of paraffin embedded hearts differentially stained with Masson's trichrome stain showed green regions of the collagen deposition in the left ventricle of the MI heart with collagen scaffold protruding through the left ventricular wall, and red regions of the normal tissue and myocytes. MI hearts showed extremely thin ventricular wall and comparatively large fibrotic areas as compared to other groups (Figure 8A). At higher magnification, the sections showed healthy myocytes with interconnected cytoplasmic junctions in the left ventricle of the sham control. The infarcted region of the MI heart displayed fibrous tissue containing uniaxially aligned fibroblasts and tightly packed collagen fibrils. There were remnants of myocytes and irregularly large and distorted blood vessels indicating pathological characteristics of the infarcted myocardium. The collagen scaffold transplanted group showed limited fibrosis and neoangiogenesis within the scaffold. The MSC-seeded collagen scaffold transplanted group showed more preservation of the left ventricular remodeling and regeneration of the myocytes. The scaffold seemed filled with the cells and a large number of blood vessels appeared in the scaffold. The zebularine treated MSC-seeded collagen scaffold group showed a greater reduction in the infarcted area, more newly formed myocytes in the infarcted ventricle and several blood vessels in the scaffold patch (Figure 8B).

Immunohistochemistry

Further confirmation of neoangiogenesis was done by immunostaining of the paraffin embedded

Table 3 Echocardiographic parameters

Groups	Duration	LVIDd (cm)	LVIDs (cm)	EF%	FS%	EDV (mL)	ESV (mL)	SV (mL)
Sham control	2 wk	0.4194	0.1639	93.5889	60.9556	0.0722	0	0.0667
MI + ve		0.5156	0.3722	62.5556	28.3056	0.1389	0.05	0.1056
MI + scaffold		0.5193	0.332	74.4467	37.3067	0.1533	0.04	0.1133
MI + MSC-seeded scaffold		0.4461	0.2611	78.8	40.9389	0.1167	0	0.0667
MI + zebularine treated MSC-seeded scaffold		0.5144	0.2972	80.2111	42.1278	0.1444	0	0.1278
Sham control	4 wk	0.4705	0.195	92.7389	59.2222	0.1222	0	0.1111
MI + ve		0.5780	0.4363	57.3306	24.9194	0.1889	0.0833	0.1222
MI + scaffold		0.47	0.305	73.1056	36.3278	0.1222	0.0333	0.0833
MI + MSC-seeded scaffold		0.5772	0.3455	78.0056	40.5667	0.2111	0.0389	0.1667
MI + zebularine treated MSC-seeded scaffold		0.5338	0.285	82.6056	45.6611	0.1667	0	0.1222
Sham control	6 wk	0.5183	0.2333	90.3333	54.8667	0.15	0	0.1333
MI + ve		0.7066	0.5716	46.85	19.55	0.3444	0.2	0.1611
MI + scaffold		0.5472	0.3622	70.0444	33.8889	0.1667	0.0389	0.1278
MI + MSC-seeded scaffold		0.5533	0.3288	78.05	40.8611	0.1722	0.0333	0.1444
MI + zebularine treated MSC-seeded scaffold		0.5589	0.3156	81.7028	43.7972	0.17778	0.0167	0.1528

LVIDd: Left ventricular internal diameter diastole; LVIDs: Left ventricular internal diameter systole; EF: Ejection fraction; FS: Fractional shortening; EDV: End diastolic volume; ESV: End systolic volume; SV: Stroke volume; MI: Myocardial infarction; MSC: Mesenchymal stem cells.

sections by α -SMA staining. Fluorescence microscopic analysis showed pathological characteristics of MI in the microvasculature of the myocardium. All three scaffold transplanted hearts showed new vessel formation at the border zone of the scaffold and myocardium. The MSC-seeded collagen scaffold transplanted hearts showed arterioles in the scaffold and myocardium along with numerous small blood vessels, whereas the zebularine treated transplanted hearts showed venules and mature blood vessels in the myocardium near the border zone (Figure 9A). Quantification of the data revealed a significant increase in the number of blood vessels in the scaffold only transplanted group ($P < 0.01$), and untreated and zebularine treated groups ($P < 0.001$) as compared to MI. The zebularine treated MSC-seeded group showed significant increase in the number of blood vessels as compared to the sham control ($P < 0.01$), MI ($P < 0.001$), scaffold only group ($P < 0.01$), and MSC-seeded scaffold transplanted group ($P < 0.05$) (Figure 9B).

Cell tracking

Microscopic analysis of DiI labeled MSC-seeded collagen scaffold showed cell migration at the border of the scaffold and myocardium in both MSC-seeded and zebularine treated MSC-seeded scaffold transplanted heart sections. Immunohistochemical analysis of these sections with cMHC, cTnT and cTnI revealed that the transplanted cells differentiated towards cardiac lineage. However, more pronounced cardiac differentiation and cell density was observed in the zebularine treated collagen scaffold transplanted group ($P < 0.05$) (Figure 10).

DISCUSSION

In this study, we investigated the role of 3D collagen scaffold in combination with zebularine treated MSCs on cardiac differentiation *in vitro* and functional regeneration of cardiac tissue *in vivo* following MI in rats. MSCs were isolated from rat BM and identified on the basis of minimal criteria established by the International Society for Cellular Therapy[18]. MSCs were characterized by their plastic adherence capability and presence of MSC markers CD29, CD44, CD90, CD117 and vimentin, and absence of CD45, a hematopoietic marker, thus confirming the presence of a pure population of MSCs in culture. MSCs were further characterized by their multilineage (osteogenic, adipogenic and chondrogenic) differentiation ability under *in vitro* culture conditions. MSCs are good candidates for cell transplantation due to the ease of isolation and having low immunogenic and immunomodulatory

Table 4 Degrees of freedom (*in vivo* experiments)

Experiments	Degrees of freedom (F)			
Cardiac function analysis	Parameters	Duration, 2 wk	Duration, 4 wk	Duration, 6 wk
	LVIDd	$F_{4,25} = 1.936$	$F_{4,25} = 1.299$	$F_{4,25} = 3.594$
	LVIDs	$F_{4,25} = 9.060$	$F_{4,25} = 6.944$	$F_{4,25} = 14.008$
	%EF	$F_{4,25} = 26.475$	$F_{4,25} = 18.378$	$F_{4,25} = 24.089$
	%FS	$F_{4,25} = 35.299$	$F_{4,25} = 24.143$	$F_{4,25} = 26.754$
	EDV	$F_{4,25} = 1.571$	$F_{4,25} = 1.059$	$F_{4,25} = 3.601$
	ESV	$F_{4,25} = 3.44$	$F_{4,25} = 5.339$	$F_{4,25} = 9.580$
	SV	$F_{4,25} = 2.305$	$F_{4,25} = 0.477$	$F_{4,25} = 0.262$
Immunohistochemistry	α -SMA	$F_{4,10} = 31.551$		
Cell tracking	Fluorescence intensities of cardiac specific proteins			
	cMHC	$F = 1.631$		
	cTnI	$F = 0.882$		
	cTnT	$F = 2.665$		
	Fluorescence intensities of DiI labeled cells			
	cMHC	$F = 0.398$		
	cTnI	$F = 0.089$		
	cTnT	$F = 0.039$		

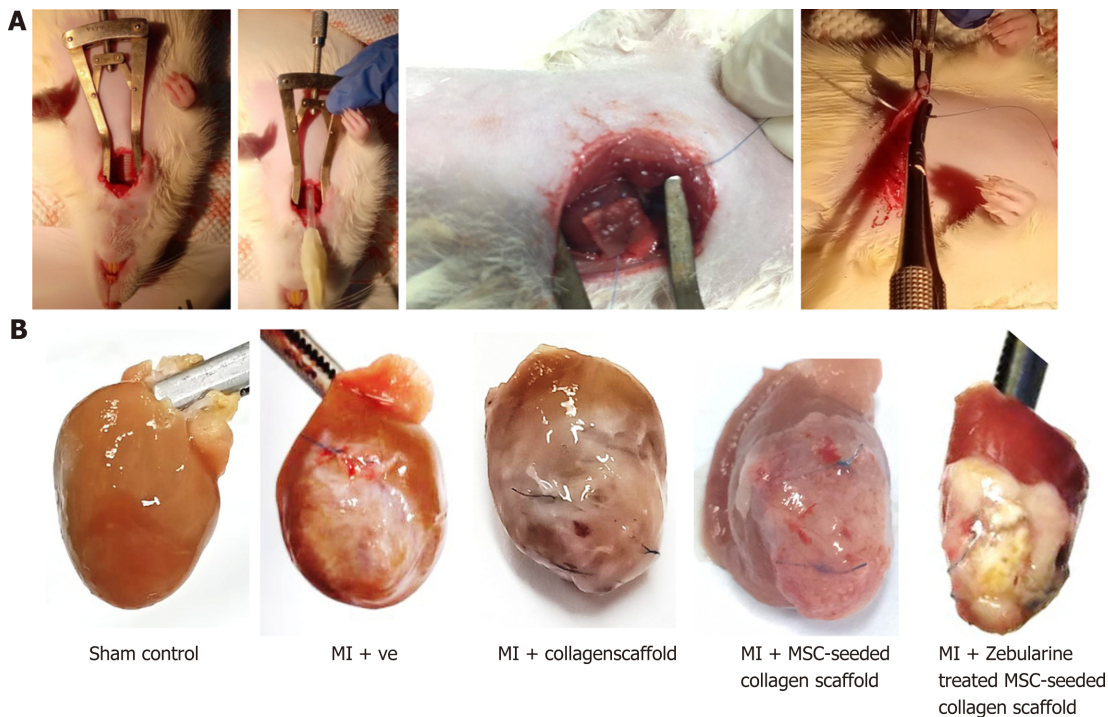
LVIDd: Left ventricular internal diameter diastole; LVIDs: Left ventricular internal diameter systole; EF: Ejection fraction; FS: Fractional shortening; EDV: End diastolic volume; ESV: End systolic volume; SV: Stroke volume; α -SMA: α -smooth muscle actin; cMHC: Cardiac myosin heavy chain; cTnI: Cardiac troponin I; cTnT: Cardiac troponin T.

effects. Their rapid proliferation and high genetic stability make their *in vitro* proliferation simple and easy.

Therapeutic advantages of MSCs have been extensively demonstrated in various MI models[19]. However, poor survival and engraftment of transplanted cells decrease their advantage as a therapeutic agent[20]. Various approaches have been explored to overcome these hurdles including the use of natural or synthetic scaffolds[21]. The strategy of transplanting stem cells along with biomaterials and mimicking the *in vivo* microenvironment provides substantial support for cellular retention and engraftment[22]. Use of ECM is one of the tissue engineering strategies that can regenerate the myocardium and improve contractility. Various natural and synthetic polymers offer the construction of ECM, however, natural biomaterials provide better construction ability and biocompatibility to mimic the endogenous tissue, compared to synthetic materials[23]. Natural ECM-derived biomaterials create a dynamic environment that can be remodeled, processed and replaced during cell therapy[24]. Among natural scaffolds, collagen represents the most appropriate candidate due to its excellent biocompatibility and mechanical stability[25,26].

Collagen type 1 is the most abundant structural protein and the most common constituent of cardiac ECM[24,27]. It accounts for 85%-90% of collagens and forms a fibrillary network along with type III collagen in the heart tissue. It provides structural support and participates in cellular signaling[27]. It is one of the earliest identified and isolated ECM components, which provides 3D environment that affects cell morphology, function and growth[24]. Collagen based patches were well studied for cardiac regeneration and can be transplanted directly on the epicardial surface at the infarcted region. They can provide better mechanical support to the weakened ventricular wall after ischemic injury, as compared to the hydrogel having low mechanical properties. Collagen patches can provide higher cell engraftment at the infarcted region compared to the injectable hydrogels and can be used to cover a large infarct area, whereas injectable hydrogels can target smaller focal regions[26]. Therefore, we used a non-denatured type 1 collagen scaffold to provide 3D microenvironment to the cells. MSCs were seeded on the collagen scaffold. SEM analysis was performed to analyze the porous network of collagen fibers and cell attachment.

MSCs have the potential of differentiating into cardiomyocytes both *in vitro* and *in vivo*[28]. *In vitro* cardiac differentiation was first described by Makino *et al*[29] in 1999, in which a demethylating agent, 5-aza, was used to treat BM stromal cells. They observed cardiomyocyte-like characteristics and beating of cells in culture[29]. Toma *et al*[30] demonstrated the *in vivo* cardiac differentiation of BM-MSCs upon



DOI: 10.4252/wjsc.v14.i8.633 Copyright ©The Author(s) 2022.

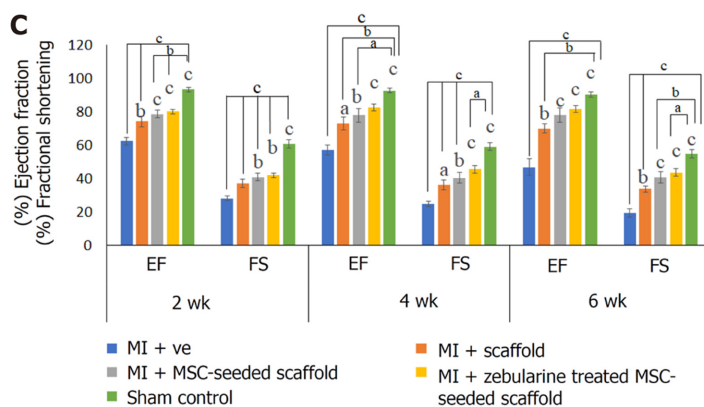
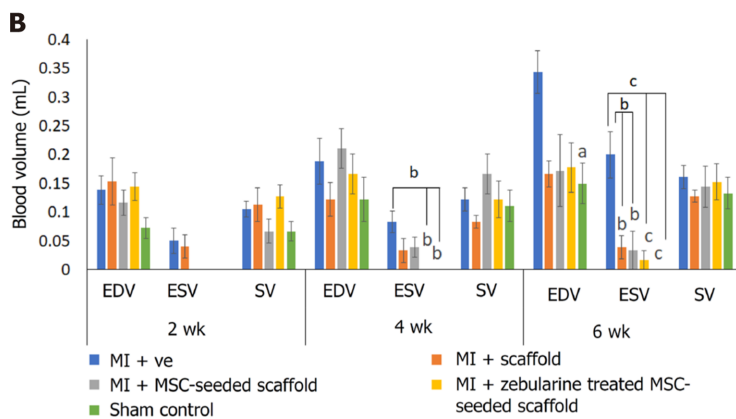
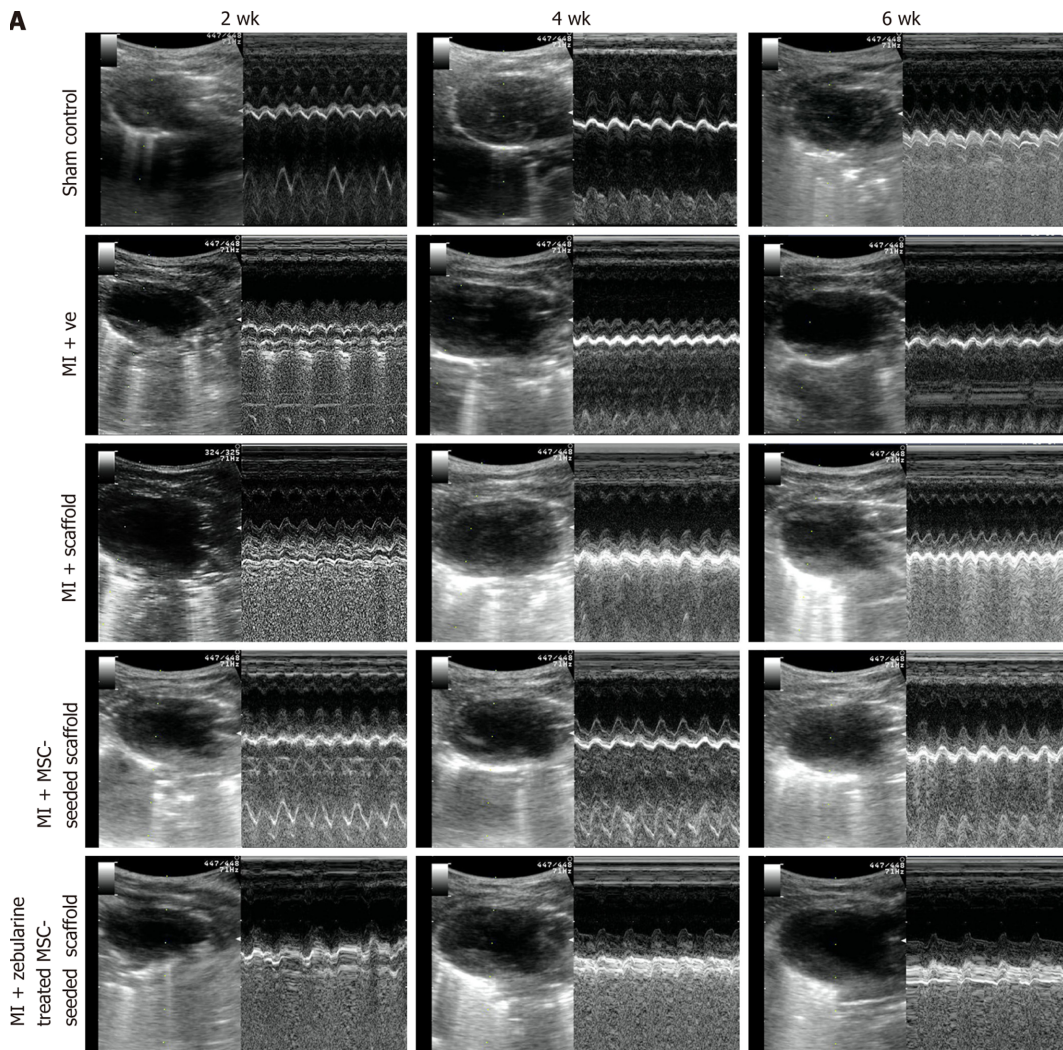
Figure 6 Collagen scaffold transplantation in rat myocardial infarction model. A: Images showing the steps of collagen scaffold transplantation; B: Images showing isolated rat hearts of sham control, myocardial infarction group, scaffold only group, and untreated and zebularine treated mesenchymal stem cell-seeded scaffold groups. MI: Myocardial infarction; MSC: Mesenchymal stem cells.

transplantation into adult murine heart. Transplanted cells showed migration, proliferation and differentiation in the infarcted region[30]. These two principal discoveries led scientists to make advances in the MSC transplantation strategy for the treatment of ischemic cardiovascular diseases[31].

Epigenetic changes are the landmarks of early cardiac differentiation as they cause activation of cardiac specific genes and repression of non-cardiac and cell cycle progression genes. Epigenetic modifications of DNA or nucleosomes are tightly regulated by enzymes. DNA methyltransferases block access to the promoter and halt subsequent transcription of downstream genes. DNA demethylation of CpG island of the promoter region clears this blockage and allows access to the promoter for active transcription[32]. Previous studies reported the use of DNA methyltransferase inhibitors such as zebularine, 5-aza and 2-deoxycytidine for cardiac differentiation of MSCs[10,33]. Previously, we have reported that zebularine is non-cytotoxic to cells at 3 $\mu\text{mol/L}$ concentration and has shown better cardiac differentiation of MSCs[10]. Here, we also used the same concentration of zebularine to induce cardiac differentiation in three different ways. In the type 1 treatment, MSCs were first treated with zebularine for 48 h, and then seeded into the collagen scaffold; in type 2 treatment, zebularine was added in the cell suspension which was then seeded into the scaffold, while in the third type, cells were first seeded in the scaffold and then zebularine was added in the medium. All three treatment types were non-cytotoxic to the cells, as indicated by the MTT assay.

Gene expression analysis by qRT-PCR showed significantly enhanced expression of cardiac specific genes *Nkx2.5*, *Mef2C*, and *cTnI* in the type 1 treatment group. *Nkx2.5* is the crucial protein that leads the mesoderm towards the development of heart by commencing the transcription of other cardiac specific transcription factors, like *GATA4* and *Mef2C*, which in turn, enhances the expression of *cMHC*, *actin* and *ANF*[32]. The type 2 treatment group, showed significant upregulation of *Nkx2.5*, *GATA4*, *cMHC* and *cTnI* as compared to the control group. The later three genes also showed significantly enhanced expression when compared to the type 1 treatment group. *Nkx2.5*, *Tbx20*, *ANF*, *cTnT*, *connexin43* and *cMHC* were significantly upregulated in the type 3 treatment group. *cMHC* expression was more significant in this treatment group when compared to the control. *cTnT* and *cTnI* are involved in the regulation of muscle contraction in response to intracellular calcium flux. *cMHC* is the main thick filament protein that participates in muscle contraction. *Connexin43* is a gap junction protein, providing connections to the neighboring cardiac cells. This protein plays a pivotal role in electrical signal transduction for the coordinated contraction of cardiac cells[34].

When protein expression was analyzed, all treatment groups showed enhanced expression of *GATA4*, *cTnT* and *Nkx2.5* as compared to control, however, type 2 and 3 treatment groups showed significantly higher expression of these proteins. Previous studies also reported the expression of these cardiac genes and proteins in the differentiated cells[2,10,15,33]. The type 3 treatment showed more



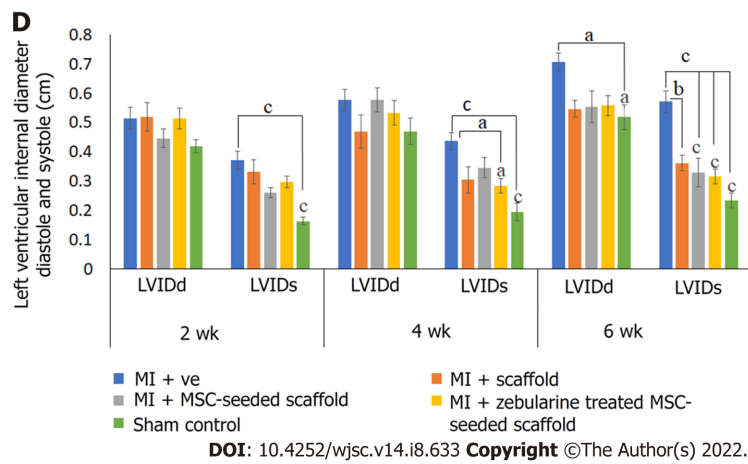


Figure 7 Cardiac functional analysis by echocardiography. A: Ultrasound images showing B and M mode scans of left ventricle in sham control, myocardial infarction (MI) group, scaffold only group, and untreated and zebularine treated mesenchymal stem cells (MSC)-seeded scaffold groups; B-D: Bar graphs showing functional analysis in terms of (B) end systolic and diastolic volumes and stroke volume, (C) ejection fraction and fractional shortening, and (D) left ventricular systolic and diastolic internal dimensions after 2, 4 and 6 wk of MI model development. Both untreated and zebularine treated MSC-seeded collagen scaffold transplanted groups showed functional improvement. However, zebularine treated group showed more pronounced results. Data is presented as mean \pm standard error of mean with significance level $^aP < 0.05$ (where $^aP < 0.05$, $^bP < 0.01$, $^cP < 0.001$). MI: Myocardial infarction; MSC: Mesenchymal stem cells; EDV: End diastolic volume; ESV: End systolic volume; LVIDd: Left ventricular internal diameter diastole; LVIDs: Left ventricular internal diameter systole; EF: Ejection fraction; FS: Fractional shortening; SV: Stroke volume.

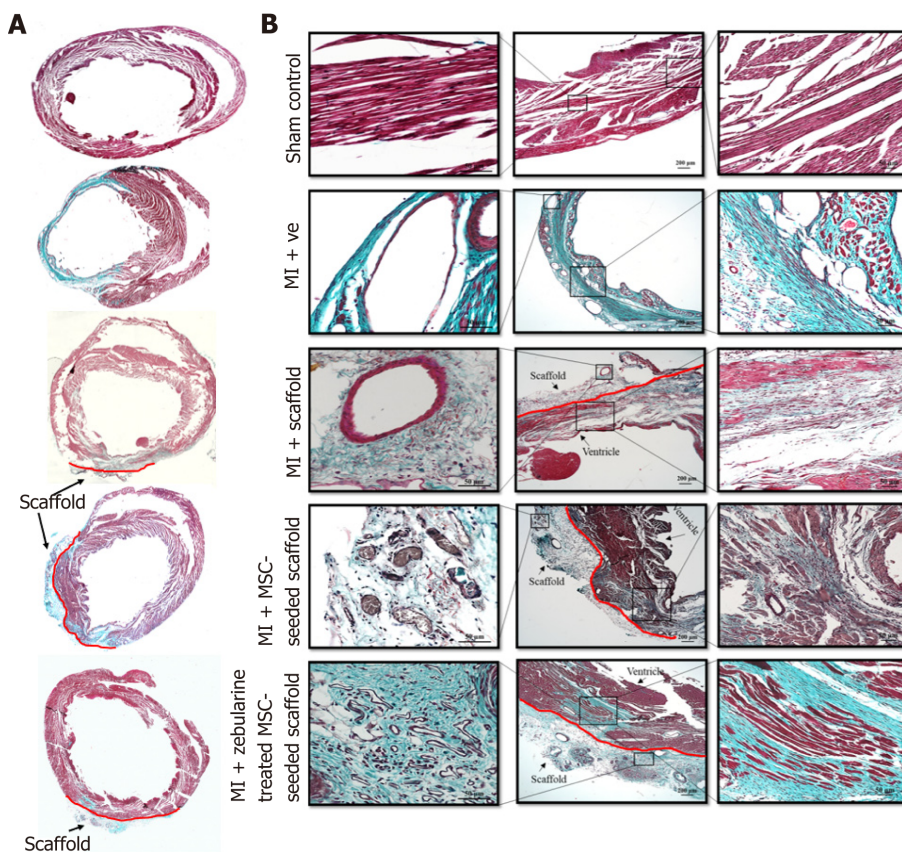
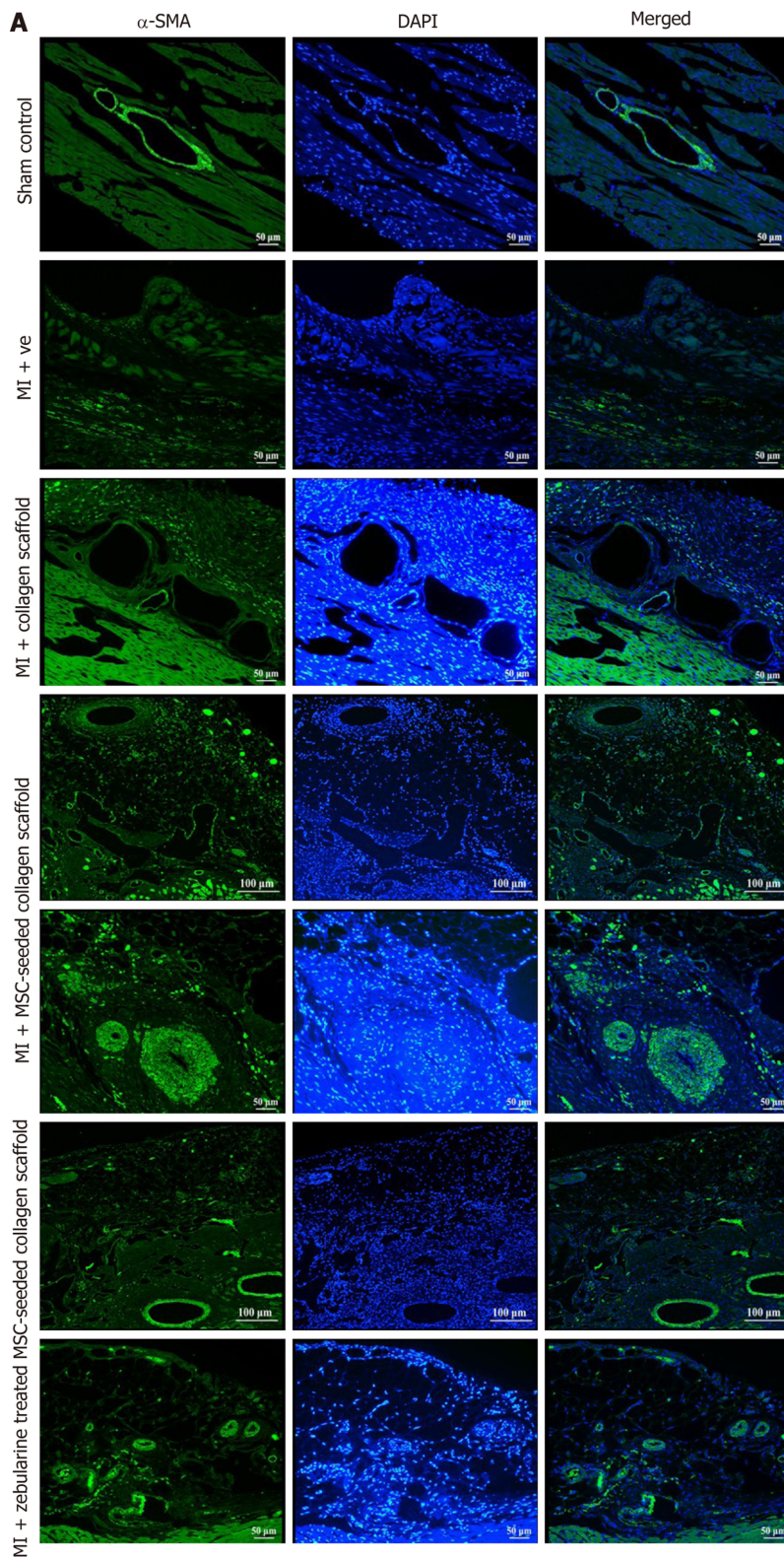


Figure 8 Histological analysis of rat hearts. A: Images showing Masson's trichrome stained sections of whole heart; B: Images showing Masson's trichrome stained sections of the corresponding magnified regions in sham control, myocardial infarction (MI) group, scaffold only group, and untreated and zebularine treated mesenchymal stem cell-seeded scaffold groups 6 wk post MI. MI: Myocardial infarction; MSC: Mesenchymal stem cells.

pronounced expression of cardiac markers, including both functional and gap junction proteins, hence, this treatment was selected for *in vivo* analysis.



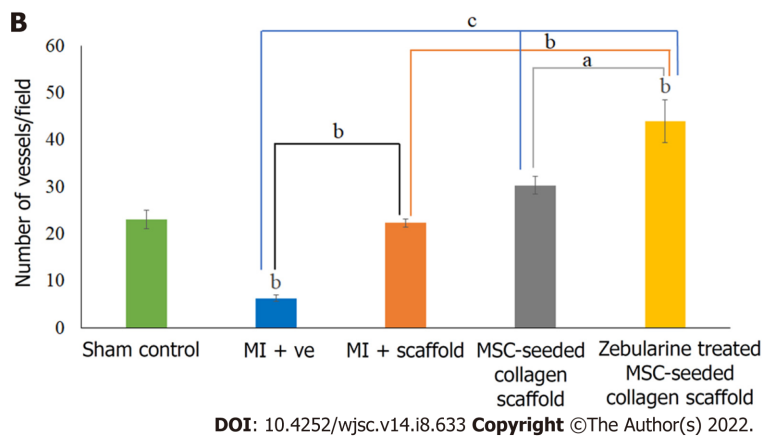
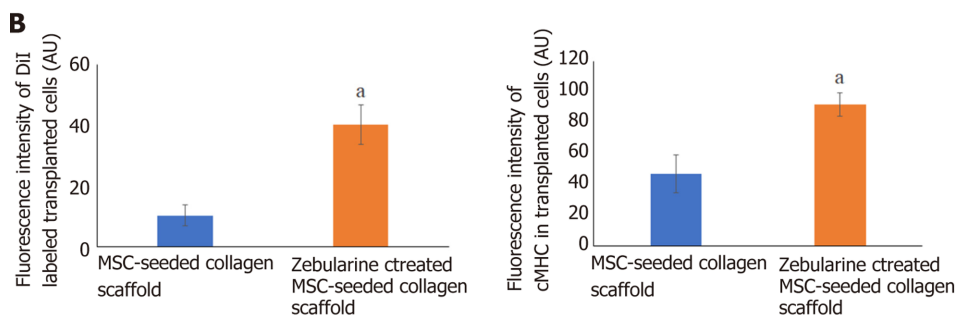
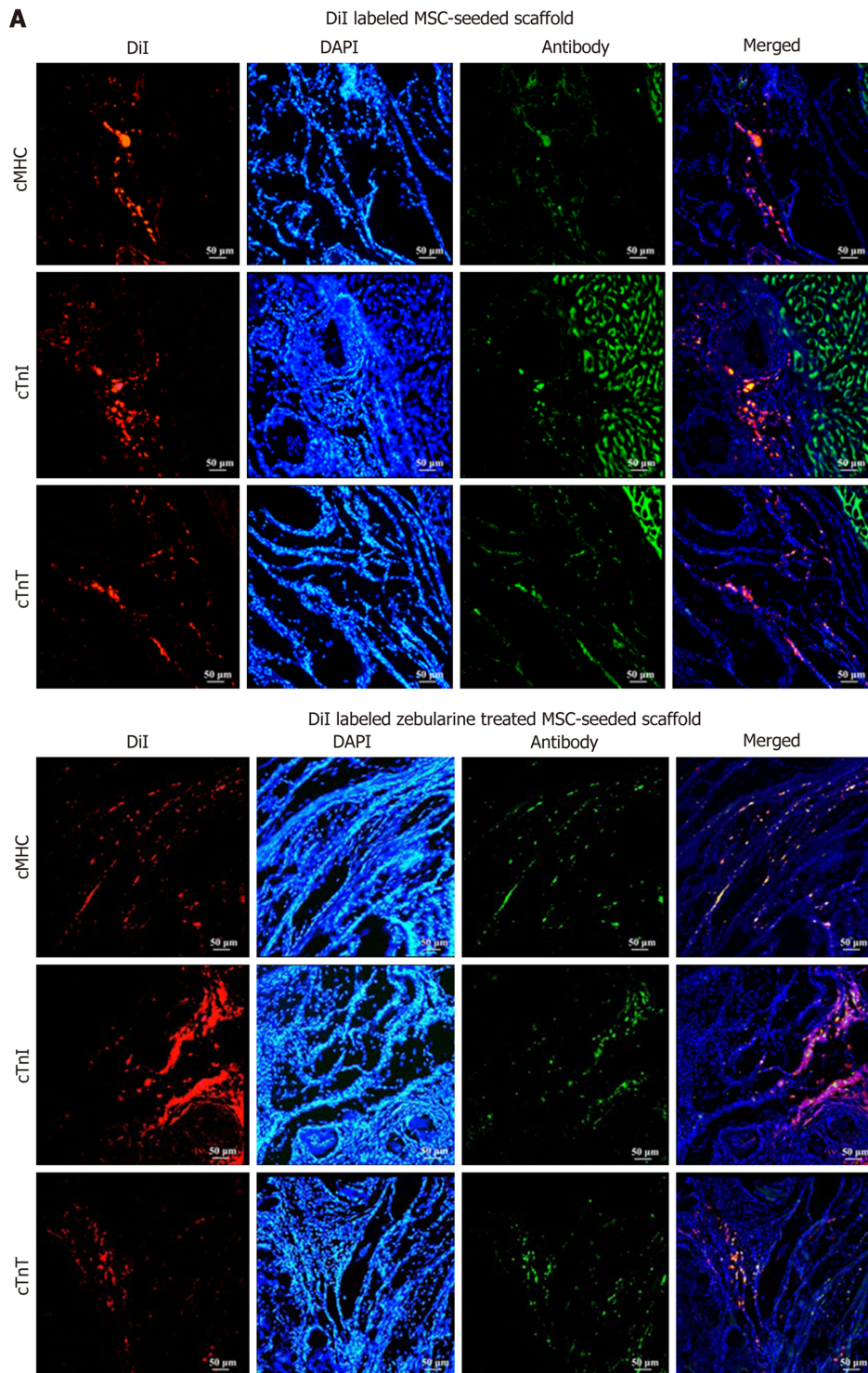


Figure 9 Analysis of angiogenesis. A: Immunohistochemical analysis of rat hearts by α -smooth muscle actin showing blood vessels in the left ventricle in sham control and myocardial infarction model; scaffold only group, and untreated and zebularine treated mesenchymal stem cells (MSC)-seeded scaffold groups also show angiogenesis in the scaffold region as well; B: Bar graphs showing the quantification of blood vessels and statistical analysis. Zebularine treated MSC-seeded scaffold transplanted group showed more significant increase in the number of blood vessels. Data is presented as mean \pm standard error of mean with significance level $^aP < 0.05$ (where $^aP < 0.05$, $^bP < 0.01$, $^cP < 0.001$). SMA: Smooth muscle actin; MI: Myocardial infarction; MSC: Mesenchymal stem cells.

Previous studies demonstrated the use of adipose derived stem cell-seeded collagen scaffold in rat and porcine models of MI with improvement in ventricular remodeling and cardiac function, mainly associated with enhanced cell engraftment[22,35]. In relevance to these reported results, we used a combination approach of pretreated MSC-seeded collagen scaffold for the regeneration of infarcted myocardium. We transplanted the collagen only scaffold, and untreated and zebularine treated MSC-seeded collagen scaffolds in acute MI models of rats. Functional parameters assessed by echocardiography showed a significant increase in LVID and ESV in the case of the MI group, while EF and FS were significantly reduced as compared to the sham control. This functional impairment of the left ventricle indicates successful establishment of the MI model. When compared with the MI group, LVIDs was significantly reduced after 6 wk in both untreated and zebularine treated MSC-seeded collagen scaffold transplanted groups. However, the zebularine group showed significant reduction in LVIDs just after 4 wk. Also, a significant reduction in ESV was observed after 4 wk of transplantation in the zebularine group which was more pronounced after 6 wk. A significant reduction in ESV was also observed in the scaffold only group and untreated MSC-seeded scaffold group, but only after 6 wk. Moreover, this reduction is less significant than the zebularine treated group. EF and FS showed significant improvement in the untreated and treated MSC-seeded scaffold transplanted groups after 2 wk, better than the scaffold only transplanted group as compared to MI. However, when compared to the sham control, EF and FS showed significant reduction in all treatment groups. After 4 wk, EF and FS were as significant in the zebularine treated MSC-seeded scaffold transplanted group as in the sham control, when compared with MI. No significant reduction in EF was observed when compared with the sham control, but FS was slightly reduced. After 6 wk, EF and FS showed significant improvement in both untreated and zebularine treated groups, compared to MI. In summary, the zebularine treated MSC-seeded collagen scaffold transplanted group showed more pronounced improvement in the cardiac functional parameters than the untreated scaffold group, comparable to the sham control. Our results are in accordance with the previous studies, which showed better functional improvement in cell-seeded scaffold or only scaffold transplanted groups as compared to the MI group[17,35,36].

When hearts were harvested after 6 wk of surgery, the scaffold transplanted hearts showed whitish residual scaffold integrated into the host myocardium. The MSC-seeded scaffold transplanted group showed blood vessels running along the entire transplanted region of the myocardium. Similar result was also reported in a study where MSC-seeded collagen-GAG scaffold was transplanted in the rat heart[37]. Histological analysis showed that the scaffold only transplanted heart sections have reduced fibrotic area than that in case of the MI group, with few patches of regenerated myocytes in the infarcted region and some blood vessels in the scaffold region, while the MSC-seeded scaffold group showed better accumulation of regenerated myocytes. The zebularine treated MSC-seeded scaffold group showed much reduced fibrosis, compared to the other groups. Immunohistochemical analysis showed enormous blood vessels in the scaffold region. Arterioles were obvious in the MSC-seeded scaffold and in the peri-infarct region below the transplanted patch. The zebularine treated MSC-seeded scaffold group showed a significant number of blood vessels including venules.

Immunohistochemical analysis of the frozen heart sections of DiI labeled cell-seeded scaffold group with cardiac functional proteins cMHC, cTnT and cTnI, showed co-localized expression of DiI and cardiac proteins in the scaffold near the border of the host myocardium. Quantitative analysis showed significantly enhanced grafted cell density and cardiac protein expression in the zebularine treated MSC-seeded collagen scaffold group, compared to the untreated group. This data supports our



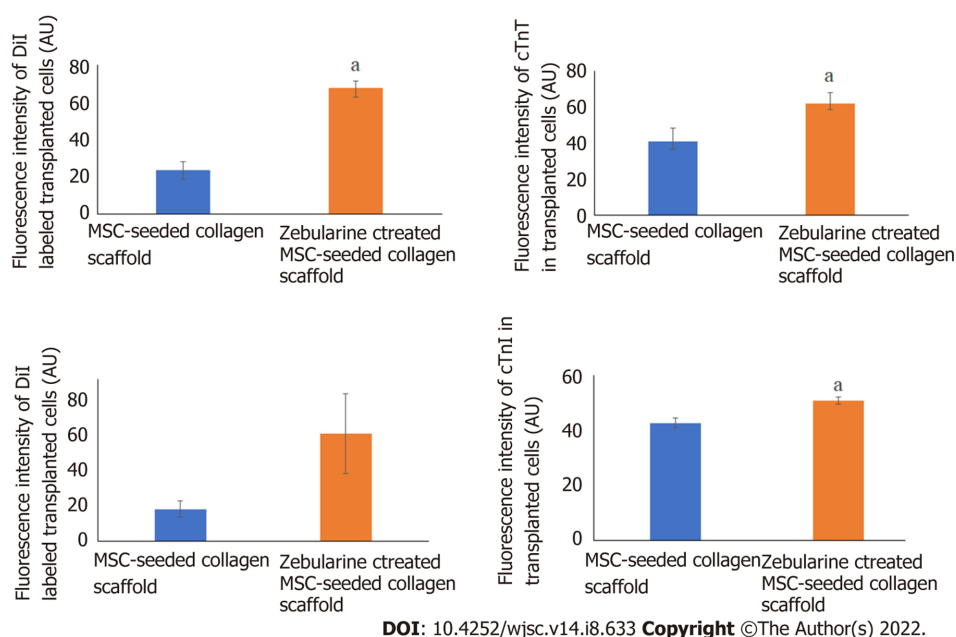


Figure 10 Cell tracking analysis. A: Fluorescence images showing Dil labeled mesenchymal stem cells (MSCs) in the scaffold near the border of the scaffold and the infarcted myocardium, and co-localized green fluorescent cardiac proteins, cardiac myosin heavy chain, cardiac troponin T, and cardiac troponin I in the untreated and zebularine treated MSC-seeded scaffold transplanted rat heart; B: Quantification of fluorescence intensities showing significantly higher intensity of Dil labeled MSCs and protein expression in zebularine treated MSC-seeded scaffold group. Data is presented as mean \pm standard error of mean with significance level $^aP < 0.05$ (where $^aP < 0.05$). MSC: Mesenchymal stem cells; DAPI: 4',6-diamidino-2-phenylindole. cTnT: Cardiac troponin T; cTnI: Cardiac troponin I; cMHC: Cardiac myosin heavy chain; DAPI: 4',6-diamidino-2-phenylindole.

histological findings which showed significantly reduced fibrosis and enhanced regeneration of the infarcted myocardium. Previous reports have confirmed restricted migration of the engrafted cells to organs other than the heart, while robust cell retention was observed when scaffold was used, with the cells being detectable even after 1 mo of implantation[38]. Our data is in agreement with these findings as we also observed cells in the scaffold after 6 wk of surgical transplantation. Taken together, our findings suggest that zebularine treated MSC-seeded collagen scaffold better preserved cardiac function and ventricular remodeling and promoted regeneration.

Study limitations

The current study used small animals; large animals should be used along with other sources of MSCs, such as human MSCs, in future studies. In addition, the *in vivo* effects of cell-seeded scaffolds were evaluated after a duration of 6 wk, while long term effects should be explored to monitor the complete biodegradability of the transplanted scaffold and complete healing of the injury. Also, large sample size may offer more credibility to the obtained results.

CONCLUSION

This study focused on the combined effect of zebularine, a demethylating agent, and 3D collagen scaffold on the cardiac differentiation of rat BM-MSCs and their subsequent role in the preservation of ventricular remodeling in the rat MI model. Zebularine treatment in the 3D microenvironment enhanced the expression of cardiac markers in MSCs, both at the gene and protein levels as compared to the control. Transplantation of zebularine treated 3D collagen scaffold in the rat MI model provided beneficial effects in terms of improvement in cardiac function, cell engraftment, neovascularization and preservation of ventricular remodeling, better than the collagen scaffold only group and untreated MSC-seeded scaffold group. The results obtained from the conducted preclinical study suggest the exploration of this tissue engineering based approach for future clinical trials involving MI patients.

ARTICLE HIGHLIGHTS

Research background

Cardiovascular diseases are the leading cause of death globally. Adult heart tissue possesses impaired

self-renewal capability and thus shows inadequate capability of restoring its structure and function after injury. Stem cell based therapy to treat cardiac injuries has achieved moderate success due to some limitations. Cardiac tissue engineering constructs the cardiac patch or scaffold to restore cardiac function following injury. Mesenchymal stem cells (MSCs) have great potential to be used for myocardial regeneration due to their multilineage differentiation potential. Controlled fate of grafted cells can be achieved by inducing *in vitro* cardiac differentiation by demethylating agent such as zebularine.

Research motivation

MSCs are potential candidates for the regeneration of damaged cardiac tissue but their insufficient survival and engraftment at the injured tissue is a major hurdle. This can be overcome by pre-differentiation of MSCs using a demethylating agent and providing three-dimensional (3D) microenvironment through biological scaffold. *In vivo* transplantation of pre-differentiated cell seeded scaffold can provide mechanical support and enhance cell survival, engraftment and regeneration of cardiac tissue and pave the way to develop an improved cardiovascular therapeutic strategy.

Research objectives

The study was aimed to enhance the differentiation of MSCs by treating them with demethylating agent, zebularine, in a 3D microenvironment provided by collagen scaffold and subsequent enhancement of cell engraftment, survival and myocardial regeneration upon *in vivo* transplantation in the rat myocardial infarction (MI) model.

Research methods

MSCs were isolated from rat bone marrow and characterized on the basis of specific cell surface markers and trilineage differentiation potential. MSCs were seeded in collagen scaffold and treated with zebularine to induce cardiac differentiation. MSC-seeded scaffolds were transplanted in the rat MI model. Cardiac function assessment was done by echocardiographic analysis and ventricular regeneration by histological analysis. Neovascularization was analyzed by immunohistochemistry with α -smooth muscle actin staining. DiI labeled cell seeded scaffolds were transplanted to track the cells and their *in vivo* cardiac differentiation was analyzed by immunohistochemistry.

Research results

In vitro results showed significantly enhanced cardiac differentiation of MSCs after zebularine treatment in 3D culture. Transplantation of pre-differentiated MSC-seeded collagen scaffold in the rat MI model improved cardiac function more efficiently than the untreated MSC-seeded collagen scaffold group. Histological analysis also showed improvement in myocardial regeneration, ventricular wall thickness and reduction in fibrotic tissue. Immunohistochemical analysis showed significantly enhanced vasculature and *in vivo* cardiac differentiation of transplanted MSCs in zebularine treated MSC-seeded collagen scaffold group.

Research conclusions

Pre-differentiation of MSC-seeded collagen scaffold transplantation improves cardiac function, preserves ventricular remodeling and enhances myocardial regeneration after acute MI. This strategy provided the 3D microenvironment to the transplanted cells, enhanced their survival and engraftment at the injured tissue, as well as increased blood supply by forming a new vascular system.

Research perspectives

The combination approach using pre-differentiated MSCs and the 3D collagen scaffold can open a new insight to repair the damage caused by ischemic cardiovascular injuries.

FOOTNOTES

Author contributions: Qazi REM performed all experiments, analyzed the data and wrote the first draft of the manuscript; Khan I co-supervised the research study, provided technical guidance for *in vivo* experiments; Haneef K provided technical guidance for *in vitro* 3D culture and wrote part of the manuscript; Malick TS performed some of the experiments; Naeem N and Ahmad W helped in echocardiographic analysis; Salim A conceived the idea, designed and supervised the research study and wrote the final manuscript; Mohsin S co-supervised the research study and provided overall technical guidance; all authors approved the final version of the manuscript.

Institutional review board statement: Human subjects have not been used in this study.

Institutional animal care and use committee statement: Ethical approval was obtained from the Institutional Animal Care and Use Committee (IACUC), Dr. Panjwani Center for Molecular Medicine and Drug Research (PCMD), International Center for Chemical and Biological Sciences (ICCBS), University of Karachi. Experimental procedures

were carried out according to the international guidelines for care and use of laboratory animals under protocol number 2020-006.

Conflict-of-interest statement: All the authors report no relevant conflicts of interest for this article.

Data sharing statement: There is no additional data.

ARRIVE guidelines statement: The authors have read the ARRIVE guidelines, and the manuscript was prepared and revised according to the ARRIVE guidelines.

Open-Access: This article is an open-access article that was selected by an in-house editor and fully peer-reviewed by external reviewers. It is distributed in accordance with the Creative Commons Attribution NonCommercial (CC BY-NC 4.0) license, which permits others to distribute, remix, adapt, build upon this work non-commercially, and license their derivative works on different terms, provided the original work is properly cited and the use is non-commercial. See: <https://creativecommons.org/licenses/by-nc/4.0/>

Country/Territory of origin: Pakistan

ORCID number: Rida-e-Maria Qazi 0000-0002-0458-0263; Irfan Khan 0000-0003-1878-7836; Kanwal Haneef 0000-0002-4725-4281; Tuba Shakil Malick 0000-0002-3856-451X; Nadia Naeem 0000-0003-1970-7340; Waqas Ahmad 0000-0002-3291-0629; Asmat Salim 0000-0001-5181-0458; Sadia Mohsin 0000-0002-2106-1094.

S-Editor: Fan JR

L-Editor: Filipodia

P-Editor: Zhang YL

REFERENCES

- 1 **Khanabadi R**, Saadat A, Fazilah M, Bazli KF, Qazi RE, Khalid RS, Hasan Adli DS, Moghadamtousi SZ, Naeem N, Khan I, Salim A, Shamsuddin SA, Mohan G. Promoting effect of small molecules in cardiomyogenic and neurogenic differentiation of rat bone marrow-derived mesenchymal stem cells. *Drug Des Devel Ther* 2016; **10**: 81-91 [PMID: 26766903 DOI: 10.2147/DDDT.S89658]
- 2 **Leeman KT**, Pessina P, Lee JH, Kim CF. Mesenchymal Stem Cells Increase Alveolar Differentiation in Lung Progenitor Organoid Cultures. *Sci Rep* 2019; **9**: 6479 [PMID: 31015509 DOI: 10.1038/s41598-019-42819-1]
- 3 **Pan XH**, Zhou J, Yao X, Shu J, Liu JF, Yang JY, Pang RQ, Ruan GP. Transplantation of induced mesenchymal stem cells for treating chronic renal insufficiency. *PLoS One* 2017; **12**: e0176273 [PMID: 28445516 DOI: 10.1371/journal.pone.0176273]
- 4 **Guo X**, Bai Y, Zhang L, Zhang B, Zagidullin N, Carvalho K, Du Z, Cai B. Cardiomyocyte differentiation of mesenchymal stem cells from bone marrow: new regulators and its implications. *Stem Cell Res Ther* 2018; **9**: 44 [PMID: 29482607 DOI: 10.1186/s13287-018-0773-9]
- 5 **Squillaro T**, Peluso G, Galderisi U. Clinical Trials With Mesenchymal Stem Cells: An Update. *Cell Transplant* 2016; **25**: 829-848 [PMID: 26423725 DOI: 10.3727/096368915X689622]
- 6 **Cheng YH**, Dong JC, Bian Q. Small molecules for mesenchymal stem cell fate determination. *World J Stem Cells* 2019; **11**: 1084-1103 [PMID: 31875870 DOI: 10.4252/wjsc.v11.i12.1084]
- 7 **Podobinska M**, Szablowska-Gadomska I, Augustyniak J, Sandvig I, Sandvig A, Buzanska L. Epigenetic Modulation of Stem Cells in Neurodevelopment: The Role of Methylation and Acetylation. *Front Cell Neurosci* 2017; **11**: 23 [PMID: 28223921 DOI: 10.3389/fncel.2017.00023]
- 8 **Banerjee S**, Bacanamwo M. DNA methyltransferase inhibition induces mouse embryonic stem cell differentiation into endothelial cells. *Exp Cell Res* 2010; **316**: 172-180 [PMID: 19715692 DOI: 10.1016/j.yexcr.2009.08.011]
- 9 **Saheli M**, Pirhajati Mahabadi V, Mesbah-Namin SA, Seifalian A, Bagheri-Hosseinabadi Z. DNA methyltransferase inhibitor 5-azacytidine in high dose promotes ultrastructural maturation of cardiomyocyte. *Stem Cell Investig* 2020; **7**: 22 [PMID: 33437842 DOI: 10.21037/sci-2020-007]
- 10 **Naeem N**, Haneef K, Kabir N, Iqbal H, Jamall S, Salim A. DNA methylation inhibitors, 5-azacytidine and zebularine potentiate the transdifferentiation of rat bone marrow mesenchymal stem cells into cardiomyocytes. *Cardiovasc Ther* 2013; **31**: 201-209 [PMID: 22954287 DOI: 10.1111/j.1755-5922.2012.00320.x]
- 11 **Horrrillo A**, Pezzolla D, Fraga MF, Aguilera Y, Salguero-Aranda C, Tejedo JR, Martin F, Bedoya FJ, Soria B, Hmadcha A. Zebularine regulates early stages of mESC differentiation: effect on cardiac commitment. *Cell Death Dis* 2013; **4**: e570 [PMID: 23559004 DOI: 10.1038/cddis.2013.88]
- 12 **Sass P**, Sosnowski P, Podolak-Popinigis J, Górniewicz B, Kamińska J, Deptuła M, Nowicka E, Wardowska A, Ruczyński J, Rekowski P, Rogujski P, Filipowicz N, Mieczkowska A, Peszyńska-Sularz G, Janus Ł, Skowron P, Czupryn A, Mucha P, Piotrowski A, Rodziejewicz-Motowidło S, Piśkuła M, Sachadyn P. Epigenetic inhibitor zebularine activates ear pinna wound closure in the mouse. *EBioMedicine* 2019; **46**: 317-329 [PMID: 31303499 DOI: 10.1016/j.ebiom.2019.07.010]
- 13 **Luo YH**, Chen J, Xiao EH, Li QY, Luo YM. Zebularine Promotes Hepatic Differentiation of Rabbit Bone Marrow Mesenchymal Stem Cells by Interfering with p38 MAPK Signaling. *Stem Cells Int* 2018; **2018**: 9612512 [PMID: 30405726 DOI: 10.1155/2018/9612512]

- 14 **Branco MA**, Cotovio JP, Rodrigues CAV, Vaz SH, Fernandes TG, Moreira LM, Cabral JMS, Diogo MM. Transcriptomic analysis of 3D Cardiac Differentiation of Human Induced Pluripotent Stem Cells Reveals Faster Cardiomyocyte Maturation Compared to 2D Culture. *Sci Rep* 2019; **9**: 9229 [PMID: 31239450 DOI: 10.1038/s41598-019-45047-9]
- 15 **Dong C**, Lv Y. Application of Collagen Scaffold in Tissue Engineering: Recent Advances and New Perspectives. *Polymers (Basel)* 2016; **8** [PMID: 30979136 DOI: 10.3390/polym8020042]
- 16 **Khan I**, Ali A, Akhter MA, Naeem N, Chotani MA, Mustafa T, Salim A. Preconditioning of mesenchymal stem cells with 2,4-dinitrophenol improves cardiac function in infarcted rats. *Life Sci* 2016; **162**: 60-69 [PMID: 27543341 DOI: 10.1016/j.lfs.2016.08.014]
- 17 **Serpooshan V**, Zhao M, Metzler SA, Wei K, Shah PB, Wang A, Mahmoudi M, Malkovskiy AV, Rajadas J, Butte MJ, Bernstein D, Ruiz-Lozano P. The effect of bioengineered acellular collagen patch on cardiac remodeling and ventricular function post myocardial infarction. *Biomaterials* 2013; **34**: 9048-9055 [PMID: 23992980 DOI: 10.1016/j.biomaterials.2013.08.017]
- 18 **Dominici M**, Le Blanc K, Mueller I, Slaper-Cortenbach I, Marini F, Krause D, Deans R, Keating A, Prockop Dj, Horwitz E. Minimal criteria for defining multipotent mesenchymal stromal cells. The International Society for Cellular Therapy position statement. *Cytotherapy* 2006; **8**: 315-317 [PMID: 16923606 DOI: 10.1080/14653240600855905]
- 19 **Guo Y**, Yu Y, Hu S, Chen Y, Shen Z. The therapeutic potential of mesenchymal stem cells for cardiovascular diseases. *Cell Death Dis* 2020; **11**: 349 [PMID: 32393744 DOI: 10.1038/s41419-020-2542-9]
- 20 **Razeghian-Jahromi I**, Matta AG, Canitrot R, Zibaeenezhad MJ, Razmkhah M, Safari A, Nader V, Roncalli J. Surfing the clinical trials of mesenchymal stem cell therapy in ischemic cardiomyopathy. *Stem Cell Res Ther* 2021; **12**: 361 [PMID: 34162424 DOI: 10.1186/s13287-021-02443-1]
- 21 **López-Díaz de Cerio A**, Perez-Estenaga I, Inoges S, Abizanda G, Gavira JJ, Larequi E, Andreu E, Rodríguez S, Gil AG, Crisostomo V, Sanchez-Margallo FM, Bermejo J, Jauregui B, Quintana L, Fernández-Avilés F, Pelacho B, Prósper F. Preclinical Evaluation of the Safety and Immunological Action of Allogeneic ADSC-Collagen Scaffolds in the Treatment of Chronic Ischemic Cardiomyopathy. *Pharmaceutics* 2021; **13** [PMID: 34452230 DOI: 10.3390/pharmaceutics13081269]
- 22 **Chen Y**, Li C, Chen J, Li Y, Xie H, Lin C, Fan M, Guo Y, Gao E, Yan W, Tao L. Tailorable Hydrogel Improves Retention and Cardioprotection of Intramyocardial Transplanted Mesenchymal Stem Cells for the Treatment of Acute Myocardial Infarction in Mice. *J Am Heart Assoc* 2020; **9**: e013784 [PMID: 31955638 DOI: 10.1161/JAHA.119.013784]
- 23 **Broughton KM**, Sussman MA. Cardiac tissue engineering therapeutic products to enhance myocardial contractility. *J Muscle Res Cell Motil* 2020; **41**: 363-373 [PMID: 31863324 DOI: 10.1007/s10974-019-09570-6]
- 24 **Xing H**, Lee H, Luo L, Kyriakides TR. Extracellular matrix-derived biomaterials in engineering cell function. *Biotechnol Adv* 2020; **42**: 107421 [PMID: 31381963 DOI: 10.1016/j.biotechadv.2019.107421]
- 25 **Wang Q**, He X, Wang B, Pan J, Shi C, Li J, Wang L, Zhao Y, Dai J, Wang D. Injectable collagen scaffold promotes swine myocardial infarction recovery by long-term local retention of transplanted human umbilical cord mesenchymal stem cells. *Sci China Life Sci* 2021; **64**: 269-281 [PMID: 32712833 DOI: 10.1007/s11427-019-1575-x]
- 26 **Wu WQ**, Peng S, Song ZY, Lin S. Collagen biomaterial for the treatment of myocardial infarction: an update on cardiac tissue engineering and myocardial regeneration. *Drug Deliv Transl Res* 2019; **9**: 920-934 [PMID: 30877625 DOI: 10.1007/s13346-019-00627-0]
- 27 **Pinkert MA**, Hortensius RA, Ogle BM, Eliceiri KW. Imaging the Cardiac Extracellular Matrix. *Adv Exp Med Biol* 2018; **1098**: 21-44 [PMID: 30238364 DOI: 10.1007/978-3-319-97421-7_2]
- 28 **Bagno L**, Hatzistergos KE, Balkan W, Hare JM. Mesenchymal Stem Cell-Based Therapy for Cardiovascular Disease: Progress and Challenges. *Mol Ther* 2018; **26**: 1610-1623 [PMID: 29807782 DOI: 10.1016/j.ymthe.2018.05.009]
- 29 **Makino S**, Fukuda K, Miyoshi S, Konishi F, Kodama H, Pan J, Sano M, Takahashi T, Hori S, Abe H, Hata J, Umezawa A, Ogawa S. Cardiomyocytes can be generated from marrow stromal cells in vitro. *J Clin Invest* 1999; **103**: 697-705 [PMID: 10074487 DOI: 10.1172/JCI5298]
- 30 **Toma C**, Pittenger MF, Cahill KS, Byrne BJ, Kessler PD. Human mesenchymal stem cells differentiate to a cardiomyocyte phenotype in the adult murine heart. *Circulation* 2002; **105**: 93-98 [PMID: 11772882 DOI: 10.1161/hc0102.101442]
- 31 **Gupta S**, Sharma A, S A, Verma RS. Mesenchymal Stem Cells for Cardiac Regeneration: from Differentiation to Cell Delivery. *Stem Cell Rev Rep* 2021; **17**: 1666-1694 [PMID: 33954876 DOI: 10.1007/s12015-021-10168-0]
- 32 **Bhuvanlalakshmi G**, Arfuso F, Kumar AP, Dharmarajan A, Warriar S. Epigenetic reprogramming converts human Wharton's jelly mesenchymal stem cells into functional cardiomyocytes by differential regulation of Wnt mediators. *Stem Cell Res Ther* 2017; **8**: 185 [PMID: 28807014 DOI: 10.1186/s13287-017-0638-7]
- 33 **Ali SR**, Ahmad W, Naeem N, Salim A, Khan I. Small molecule 2'-deoxycytidine differentiates human umbilical cord-derived MSCs into cardiac progenitors *in vitro* and their *in vivo* xeno-transplantation improves cardiac function. *Mol Cell Biochem* 2020; **470**: 99-113 [PMID: 32415417 DOI: 10.1007/s11010-020-03750-6]
- 34 **Vaez SA**, Ebrahimi-Barough S, Soleimani M, Kolivand S, Farzamfar S, Ahmadi Tafti SH, Azami M, Noorbakhsh F, Ai J. The cardiac niche role in cardiomyocyte differentiation of rat bone marrow-derived stromal cells: comparison between static and microfluidic cell culture methods. *EXCLI J* 2018; **17**: 762-774 [PMID: 30190666 DOI: 10.17179/excli2018-1539]
- 35 **Araña M**, Gavira JJ, Peña E, González A, Abizanda G, Cilla M, Pérez MM, Albiasu E, Aguado N, Casado M, López B, González S, Soriano M, Moreno C, Merino J, García-Verdugo JM, Díez J, Doblaré M, Pelacho B, Prosper F. Epicardial delivery of collagen patches with adipose-derived stem cells in rat and minipig models of chronic myocardial infarction. *Biomaterials* 2014; **35**: 143-151 [PMID: 24119456 DOI: 10.1016/j.biomaterials.2013.09.083]
- 36 **Qu H**, Xie BD, Wu J, Lv B, Chuai JB, Li JZ, Cai J, Wu H, Jiang SL, Leng XP, Kang K. Improved Left Ventricular Aneurysm Repair with Cell- and Cytokine-Seeded Collagen Patches. *Stem Cells Int* 2018; **2018**: 4717802 [PMID: 29531539 DOI: 10.1155/2018/4717802]
- 37 **Xiang Z**, Liao R, Kelly MS, Spector M. Collagen-GAG scaffolds grafted onto myocardial infarcts in a rat model: a delivery vehicle for mesenchymal stem cells. *Tissue Eng* 2006; **12**: 2467-2478 [PMID: 16995780 DOI: 10.1089/ten.2006.12.2467]
- 38 **Miao C**, Lei M, Hu W, Han S, Wang Q. A brief review: the therapeutic potential of bone marrow mesenchymal stem cells in myocardial infarction. *Stem Cell Res Ther* 2017; **8**: 242 [PMID: 29096705 DOI: 10.1186/s13287-017-0697-9]



Published by **Baishideng Publishing Group Inc**
7041 Koll Center Parkway, Suite 160, Pleasanton, CA 94566, USA

Telephone: +1-925-3991568

E-mail: bpgoffice@wjgnet.com

Help Desk: <https://www.f6publishing.com/helpdesk>

<https://www.wjgnet.com>

