

World Journal of *Hepatology*

World J Hepatol 2020 October 27; 12(10): 693-882



REVIEW

- 693** Neoadjuvant treatment strategies for intrahepatic cholangiocarcinoma
Akateh C, Ejaz AM, Pawlik TM, Cloyd JM
- 709** Metabolic syndrome and liver disease in the era of bariatric surgery: What you need to know!
Ziogas IA, Zapsalis K, Giannis D, Tsoulfas G
- 722** Combined liver-kidney transplantation for rare diseases
Knotek M, Novak R, Jaklin-Kelez A, Mrzljak A

MINIREVIEWS

- 738** Hepatocellular carcinoma Liver Imaging Reporting and Data Systems treatment response assessment: Lessons learned and future directions
Aslam A, Do RKG, Kambadakone A, Spieler B, Miller FH, Gabr AM, Charalel RA, Kim CY, Madoff DC, Mendiratta-Lala M
- 754** Tumor necrosis family receptor superfamily member 9/tumor necrosis factor receptor-associated factor 1 pathway on hepatitis C viral persistence and natural history
Peña-Asensio J, Sanz-de-Villalobos E, Miquel J, Larrubia JR
- 766** Apatinib as an alternative therapy for advanced hepatocellular carcinoma
Zhang XH, Cao MQ, Li XX, Zhang T

ORIGINAL ARTICLE

Basic Study

- 775** Hepatitis B virus detected in paper currencies in a densely populated city of India: A plausible source of horizontal transmission?
Das P, Supekar R, Chatterjee R, Roy S, Ghosh A, Biswas S

Case Control Study

- 792** PNPLA3 and TM6SF2 polymorphisms in Brazilian patients with nonalcoholic fatty liver disease
Lisboa QC, Nardelli MJ, Pereira PA, Miranda DM, Ribeiro SN, Costa RSN, Versiani CA, Vidigal PVT, Ferrari TCA, Couto CA

Retrospective Cohort Study

- 807** Impact of sarcopenia on mortality in patients undergoing liver re-transplantation
Dhaliwal A, Larson D, Hiat M, Muinov LM, Harrison WL, Sayles H, Sempokuya T, Olivera MA, Rochling FA, McCashland TM

Retrospective Study

- 816** Increased incidence of and microbiologic changes in pyogenic liver abscesses in the Mexican population
Pérez-Escobar J, Ramirez-Quesada W, Calle-Rodas DA, Chi-Cervera LA, Navarro-Alvarez N, Aquino-Matus J, Ramírez-Hinojosa JP, Moctezuma-Velázquez C, Torre A

Observational Study

- 829** Malnutrition and non-compliance to nutritional recommendations in patients with cirrhosis are associated with a lower survival
Crisan D, Procopet B, Epure A, Stefanescu H, Suciu A, Fodor A, Mois E, Craciun R, Crisan N
- 841** Effect of treating chronic hepatitis C with direct-acting antivirals on extrahepatic cutaneous manifestations
El Kassas M, Hegazy OM, Salah EM
- 850** Novel markers of endothelial dysfunction in hepatitis C virus-related cirrhosis: More than a mere prediction of esophageal varices
Hanafy AS, Basha MAK, Wadea FM

CASE REPORT

- 863** Kratom induced severe cholestatic liver injury histologically mimicking primary biliary cholangitis: A case report
Gandhi D, Ahuja K, Quade A, Batts KP, Patel L
- 870** Severe COVID-19 after liver transplantation, surviving the pitfalls of learning on-the-go: Three case reports
Alconchel F, Cascales-Campos PA, Pons JA, Martínez M, Valiente-Campos J, Gajownik U, Ortiz ML, Martínez-Alarcón L, Parrilla P, Robles R, Sánchez-Bueno F, Moreno S, Ramirez P

LETTER TO THE EDITOR

- 880** Role of platelet-albumin-bilirubin score in predicting re-bleeding after band ligation for acute variceal hemorrhage
Faisal MS, Singh T, Amin H, Modaresi Esfeh J

ABOUT COVER

Editorial board member of *World Journal of Hepatology*, Dr. Fernando Oscar Bessone is Professor of Gastroenterology and Chief of the Gastroenterology and Hepatology Department at the Hospital Provincial del Centenario, University of Rosario School of Medicine (Brazil). Dr. Bessone completed postgraduate training in Clinical Hepatology, Liver Pathology (Hospital de Clinicas, San Pablo, Brazil), Pediatric Hepatology (Hospital da Criança, San Pablo, Brazil), and Liver Transplantation and Clinical Hepatology (Hospital Clinic y Provincial de Barcelona, Spain). He has served as Principal Investigator or Co-Investigator in more than 50 clinical trials, and is currently the Coordinator of the Latin American Registry of Hepatotoxicity. He authored more than 70 articles, 30 book chapters, and more than 140 papers presented at scientific meetings. In addition, he serves as an editorial board member for several international hepatology-related journals. (L-Editor: Filipodia)

AIMS AND SCOPE

The primary aim of *World Journal of Hepatology* (*WJH*, *World J Hepatol*) is to provide scholars and readers from various fields of hepatology with a platform to publish high-quality basic and clinical research articles and communicate their research findings online.

WJH mainly publishes articles reporting research results and findings obtained in the field of hepatology and covering a wide range of topics including chronic cholestatic liver diseases, cirrhosis and its complications, clinical alcoholic liver disease, drug induced liver disease autoimmune, fatty liver disease, genetic and pediatric liver diseases, hepatocellular carcinoma, hepatic stellate cells and fibrosis, liver immunology, liver regeneration, hepatic surgery, liver transplantation, biliary tract pathophysiology, non-invasive markers of liver fibrosis, viral hepatitis.

INDEXING/ABSTRACTING

The *WJH* is now abstracted and indexed in PubMed, PubMed Central, Emerging Sources Citation Index (Web of Science), Scopus, China National Knowledge Infrastructure (CNKI), China Science and Technology Journal Database (CSTJ), and Superstar Journals Database.

RESPONSIBLE EDITORS FOR THIS ISSUE

Production Editor: Li-Li Wang; Production Department Director: Yun-Xiao Jian Wu; Editorial Office Director: Jia-Ping Yan.

NAME OF JOURNAL

World Journal of Hepatology

ISSN

ISSN 1948-5182 (online)

LAUNCH DATE

October 31, 2009

FREQUENCY

Monthly

EDITORS-IN-CHIEF

Nikolaos T Pylsopoulos, Ke-Qin Hu, Koo Jeong Kang

EDITORIAL BOARD MEMBERS

<https://www.wjgnet.com/1948-5182/editorialboard.htm>

PUBLICATION DATE

October 27, 2020

COPYRIGHT

© 2020 Baishideng Publishing Group Inc

INSTRUCTIONS TO AUTHORS

<https://www.wjgnet.com/bpg/gerinfo/204>

GUIDELINES FOR ETHICS DOCUMENTS

<https://www.wjgnet.com/bpg/GerInfo/287>

GUIDELINES FOR NON-NATIVE SPEAKERS OF ENGLISH

<https://www.wjgnet.com/bpg/gerinfo/240>

PUBLICATION ETHICS

<https://www.wjgnet.com/bpg/GerInfo/288>

PUBLICATION MISCONDUCT

<https://www.wjgnet.com/bpg/gerinfo/208>

ARTICLE PROCESSING CHARGE

<https://www.wjgnet.com/bpg/gerinfo/242>

STEPS FOR SUBMITTING MANUSCRIPTS

<https://www.wjgnet.com/bpg/GerInfo/239>

ONLINE SUBMISSION

<https://www.f6publishing.com>

Hepatocellular carcinoma Liver Imaging Reporting and Data Systems treatment response assessment: Lessons learned and future directions

Anum Aslam, Richard Kinh Gian Do, Avinash Kambadakone, Bradley Spieler, Frank H Miller, Ahmed M Gabr, Resmi A Charalel, Charles Y Kim, David C Madoff, Mishal Mendiratta-Lala

ORCID number: Anum Aslam 0000-0001-6243-5286; Richard Kinh Gian Do 0000-0002-6554-0310; Avinash Kambadakone 0000-0001-6714-9190; Bradley Spieler 0000-0002-7346-2885; Frank H Miller 0001-9506-9411; Ahmed M Gabr 0000-0001-6636-0189; Resmi A Charalel 0000-0001-9841-3839; Charles Y Kim 0000-0002-8687-1522; David C Madoff 0000-0003-3461-437X; Mishal Mendiratta-Lala 0000-0003-4055-916X.

Author contributions: Aslam A analyzed the data and wrote the manuscript; Do RKG, Kambadakone A, Spieler B, Miller FH, Gabr AM, Charalel RA, Charalel RA, Kim CY, and Madoff DC made critical revisions related to important intellectual content of the manuscript; Mendiratta-Lala M analyzed the literature, wrote the manuscript and made critical revisions related to important intellectual content of the manuscript; and all authors have read and approve the final manuscript.

Conflict-of-interest statement: Mendiratta-Lala M is funded from National Institute of Health (NIH) PO1 CA59827. Kim CY serves as a consultant for Medical advisory board Boston Scientific, Genentech;

Anum Aslam, Department of Radiology, University of Michigan, Ann Arbor, MI 48019, United States

Richard Kinh Gian Do, Department of Radiology, Memorial Sloan Kettering Cancer Center, New York, NY 10065, United States

Avinash Kambadakone, Abdominal Imaging and Interventional Radiology, Harvard Medical School, Massachusetts General Hospital, Boston, MA 02114, United States

Bradley Spieler, Department of Radiology, Louisiana State University Health Sciences Center, New Orleans, LA 70112, United States

Frank H Miller, Department of Radiology, Northwestern University Feinberg School of Medicine, Northwestern University, Chicago, IL 60611, United States

Ahmed M Gabr, Department of Interventional Radiology, OHSU and Tanta University, Egypt, Portland, OR 97239, United States

Resmi A Charalel, Department of Radiology, Weill Cornell Medicine, New York, NY 10065, United States

Charles Y Kim, Department of Radiology, Duke University Medical Center, Duke University, Durham, NC 27710, United States

David C Madoff, Department of Radiology and Biomedical Imaging, Yale School of Medicine, New Haven, CT 06520, United States

Mishal Mendiratta-Lala, School of Medicine, 1500 East Medical Center Drive, University of Michigan, Ann Arbor, MI 48109, United States

Corresponding author: Anum Aslam, MD, Assistant Professor, Department of Radiology, University of Michigan, 1500 E. Medical Center Dr, Ann Arbor, MI 48019, United States. aanum@med.umich.edu

Abstract

Hepatocellular carcinoma (HCC) is a leading cause of morbidity and mortality worldwide, with rising clinical and economic burden as incidence increases. There

Consultant: Medtronic. Charalel RA is a consultant for SirTEX Medical and has received a GERRAF research grant. No other author has any disclosures or conflicts of interest.

Open-Access: This article is an open-access article that was selected by an in-house editor and fully peer-reviewed by external reviewers. It is distributed in accordance with the Creative Commons Attribution NonCommercial (CC BY-NC 4.0) license, which permits others to distribute, remix, adapt, build upon this work non-commercially, and license their derivative works on different terms, provided the original work is properly cited and the use is non-commercial. See: <http://creativecommons.org/licenses/by-nc/4.0/>

Manuscript source: Unsolicited manuscript

Received: June 28, 2020

Peer-review started: June 28, 2020

First decision: July 28, 2020

Revised: August 7, 2020

Accepted: September 17, 2020

Article in press: September 17, 2020

Published online: October 27, 2020

P-Reviewer: Song MJ, Xu X

S-Editor: Huang P

L-Editor: A

P-Editor: Wang LL



are a multitude of evolving treatment options, including locoregional therapies which can be used alone, in combination with each other, or in combination with systemic therapy. These treatment options have shown to be effective in achieving remission, controlling tumor progression, improving disease free and overall survival in patients who cannot undergo resection and providing a bridge to transplant by debulking tumor burden to downstage patients. Following locoregional therapy (LRT), it is crucial to provide treatment response assessment to guide management and liver transplant candidacy. Therefore, Liver Imaging Reporting and Data Systems (LI-RADS) Treatment Response Algorithm (TRA) was created to provide a standardized assessment of HCC following LRT. LI-RADS TRA provides a step by step approach to evaluate each lesion independently for accurate tumor assessment. In this review, we provide an overview of different locoregional therapies for HCC, describe the expected post treatment imaging appearance following treatment, and review the LI-RADS TRA with guidance for its application in clinical practice. Unique to other publications, we will also review emerging literature supporting the use of LI-RADS for assessment of HCC treatment response after LRT.

Key Words: Hepatocellular carcinoma; Liver Imaging Reporting and Data Systems Treatment Response Algorithm; Locoregional therapy; Liver Imaging Reporting and Data Systems Treatment Response equivocal; Arterial phase hyper enhancement; Stereotactic body radiotherapy

©The Author(s) 2020. Published by Baishideng Publishing Group Inc. All rights reserved.

Core Tip: Liver Imaging Reporting and Data Systems (LI-RADS) Treatment Response Algorithm (TRA) provides a new framework to describe treatment response for each individually treated hepatocellular carcinoma (HCC). Emerging evidence for its use in clinical practice is promising for ablation and non-radiation arterial-based therapies (*i.e.*, transarterial chemoembolization). However, LI-RADS TRA should be applied cautiously when assessing HCC treated with radiation-based therapies (*i.e.*, transarterial radioembolization, stereotactic body radiotherapy), in which early post-treatment persistent arterial phase hyperenhancement is common, and expected, and can confound treatment response.

Citation: Aslam A, Do RKG, Kambadakone A, Spieler B, Miller FH, Gabr AM, Charalel RA, Kim CY, Madoff DC, Mendiratta-Lala M. Hepatocellular carcinoma Liver Imaging Reporting and Data Systems treatment response assessment: Lessons learned and future directions. *World J Hepatol* 2020; 12(10): 738-753

URL: <https://www.wjgnet.com/1948-5182/full/v12/i10/738.htm>

DOI: <https://dx.doi.org/10.4254/wjh.v12.i10.738>

INTRODUCTION

Hepatocellular carcinoma (HCC) is the most common primary liver malignancy and third leading cause of cancer related mortality worldwide^[1]. The incidence of HCC continues to rise in the United States^[2], largely due to the increasing rate of cirrhosis from obesity, alcohol use and chronic viral hepatitis^[3]. Historically, curative treatment options for HCC include liver transplantation, surgical resection or thermal ablation for tumors less than 3 cm in size^[4]. However, approximately 80% of patients are not surgical candidates; for them, locoregional treatment (LRT) options include: Thermal ablation [*e.g.*, microwave ablation (MWA), radiofrequency (RFA), cryoablation], percutaneous ethanol injection (PEI), transarterial chemoembolization (TACE), transarterial bland embolization (TAE), transarterial radioembolization (TARE), and stereotactic body radiotherapy (SBRT)^[5-7]. LRT can be used alone, in combination with each other, or in combination with systemic therapy, and has been shown to improve disease-free and overall survival (OS) in patients who cannot undergo surgery^[8-10].

Furthermore, LRT can help prolong time to progression, extend survival, palliate symptoms, keep lesions from progressing outside of Milan criteria to maintain liver transplant candidacy (bridge to transplant), and convert non-transplant candidates to transplant candidates based on Milan criteria (downstage to transplant)^[11-13]. Treatment decisions are usually made by a multidisciplinary liver tumor board, and depend on various patient factors, including tumor location, size and multiplicity, disease stage, liver function, performance status, technical feasibility and potential for future transplant candidacy^[14,15].

Following LRT, it is imperative to provide accurate treatment response assessment to help guide clinical management. While numerous validated imaging based treatment response classification systems exist, [*i.e.*, European Association for the Study of Liver Disease (EASL)^[16], modified Response Evaluation Criteria in Solid Tumors (mRECIST)]^[17], they are based on tumor response assessment at the patient-level. However, HCC is unique in that tumors are often isolated to the liver, and LRT can be used to target the tumor(s) directly. Different LRTs may also be performed to different lesions within the same liver. Furthermore, liver transplant candidacy is based on assessment of each lesion. Consequently, the Liver Reporting and Data System (LI-RADS) Treatment Response Algorithm (TRA)^[2], was created to provide a standardized assessment of each HCC treated by LRT, a feature which makes this treatment response classification unique to the existing ones. Furthermore, this allows LI-RADS TRA to be more applicable from a clinical perspective in patient management.

In this manuscript, we provide a brief overview of the various LRTs for HCC, describe the expected post treatment imaging appearances after LRT, review the definitions within the LI-RADS TRA and provide guidance for their use in clinical practice. We will also review the emerging literature supporting LI-RADS for assessment of HCC treatment response after LRT. This review is unique to other publications because it provides a comprehensive overview of the LI-RADS TRA and guidance for its application in clinical practice based on expected post treatment imaging findings, as well as critically reviews current literature supporting this algorithm.

LOCOREGIONAL THERAPIES FOR HCC

There are many treatment options for HCC, depending on stage of disease, as well as other factors mentioned above. LRTs for liver limited disease have proliferated in recent years, and are generally categorized as follows^[18-20]: (1) Loco-ablative therapy: Chemical ablation (PEI), physical ablation utilizing energy sources [Heat: RFA, MWA; Cold: Cryoablation; Electrical: Irreversible electroporation (IRE)]; (2) Arterial based therapy (non-radiation): TAE, conventional trans-arterial chemoembolization (cTACE), drug eluting beads TACE (DEB-TACE); and (3) Radiation-based therapy: TARE and SBRT.

Loco-ablative therapy

Historically, the first ablative therapy used for HCC was PEI, which consists of injecting ethanol directly into the tumor under image guidance to achieve tumor death *via* coagulative necrosis and ischemia^[21]. Studies show that PEI has a high safety profile, good overall efficacy, and low complication rates with complete necrosis of small HCC tumors; however, limitations of PEI include the need for multiple treatments^[22]. In 1999, the first thermal ablation was performed with RFA, showing a high safety profile, good overall efficacy, and 5 year survival rates similar to surgical resection for tumors less than 3 cm in size^[23]. Thermal ablation modalities, including RFA and MWA, use energy at different frequencies to create high temperatures with rapidly oscillating field strength *via* percutaneous insertion of electrodes (RFA)/antennas (MWA) into the tumor through image guidance. This results in cell death *via* coagulation necrosis^[24]. Multiple randomized controlled trials have been performed showing superiority of RFA to PEI in terms of OS, complete response (CR) and local recurrence (LR)^[25]. A recent meta-analysis demonstrated that RFA significantly increases survival in patients with HCC by 3-years as compared with PEI^[26]. Although there is still a role for PEI in some cases where ablation is technically challenging or cannot be performed safely, thermal ablation is much more commonly performed worldwide.

Arterial based therapy (non-radiation)

The goal of non-radiation arterial-based therapy is to prevent local progression in intermediate and advanced stage HCC, as a form of palliative therapy or as a method for downstaging/bridging to resection or transplant. By providing arterial delivery of embolic material, either bland (TAE) or chemotherapy coated (cTACE/DEB-TACE), to HCC *via* the hepatic artery, arterial inflow to the tumor is eliminated, resulting in cell death^[18,27,28]. When TACE is performed, tumor cell death (necrosis) occurs by two mechanisms: Ischemic injury from arterial embolization and chemotoxic injury from the administered chemotherapeutic agent^[29]. Historically, TACE is indicated in non-surgical patients with large multifocal HCC and Child-Pugh Score A without extrahepatic spread^[30]; although recently, the scope for using TACE has expanded, and now includes treating small and/or solitary tumors. The presence of portal vein obstruction by bland thrombus or intravascular tumor is a relative contraindication to non-radiation arterial based therapy^[31,32]; in this instance, both the arterial and portal venous flow to the liver would be compromised, resulting in ischemia of the hepatic parenchyma within the embolization zone^[33]. Non-radiation based trans-catheter intra-arterial therapies include: (1) Conventional TACE: Utilizes an emulsion of iodized oil mixed with a chemotherapeutic agent followed by administration of gelatin sponge or embolic microparticles to near complete stasis^[34]; (2) DEB-TACE: Utilizes microspheres coated with chemotherapeutic agent, which will elute into local tissues over time^[35]; and (3) Bland TAE: Utilizes polyvinyl alcohol particles or microspheres to occlude the arterial supply without a chemotherapeutic agent^[36]. Multiple randomized control studies have shown that neither TACE nor DEB-TACE improved tumor objective response or provided survival benefit when compared to TAE^[9,37,38]. However, conventional TACE remains the current standard of care for unresectable intermediate or advanced stage HCC in patients with preserved liver function based on BCLC guidelines^[39].

Radiation based therapy

TARE and SBRT are the most common radiation-based treatment modalities used today^[40]. As in any form of LRT, patient selection, including assessment of patient's disease burden, biochemical parameters and performance status, are critical to determining which form of therapy is preferred. TARE is ideal if the disease is limited to less than half of the liver^[40]. Other lab parameters are also important for patient selection, including bilirubin < 2 mg/dL and albumin > 3 g/dL^[40,41]. TARE involves injection of Y90 microspheres (20-60 microns in diameter) into the hepatic arteries, which delivers targeted radiation^[42]. Portal vein thrombus (bland or tumor) is not a relative contraindication for TARE^[41], since this form of intra-arterial therapy does not result in arterial embolization^[42].

SBRT consists of applying multiple tightly focused high energy beams of radiation to treat HCC, allowing for the delivery of higher doses of radiation with relative sparing of adjacent parenchyma when compared to other options, albeit with the limitation of multiple treatment sessions over days.

HCC TREATMENT ASSESSMENT BASED ON LI-RADS TRA

Following LRT for HCC, cross-sectional imaging with multiphasic MRI and/or CT (including pre contrast and dynamic arterial, portal venous and delayed phase imaging) is routinely performed to assess treatment response and to identify new or developing sites of disease in the untreated liver. Routine time intervals for follow-up varies depending on institutional protocol, type of LRT performed, and transplant status for patients being down staged or bridged. Most major transplant centers and large institutions perform imaging 1-mo post-treatment, followed by imaging at 2-3 mo intervals. Imaging after radiation-based therapy (TARE/SBRT) begins 3 mo after treatment and about every 3 mo thereafter. While the choice of imaging modality (CT or MRI) can vary depending on patient factors and institutional preference, it is important to try and maintain consistency in the modality and technique for imaging performed before and after LRT. Accurate interpretation of post-treatment imaging is essential for guiding further management decisions and requires comparison of post-treatment with pre-treatment imaging to appreciate the original tumor dimensions and enhancement characteristics.

EXPECTED POST TREATMENT IMAGING APPEARANCE

Imaging appearances of HCC after LRT will vary depending on the treatment modality, with different expected findings for the various forms of therapy. Thus, it is imperative to become aware of the expected treatment specific enhancement patterns in order to prevent inaccurate interpretation of residual or recurrent neoplasm. While the expected imaging appearances of the treated tumor are similar for ablation and non-radiation arterial-based therapy, as tumoral necrosis is expected immediately after LRT, imaging findings are distinct after radiation-based therapy (TARE and SBRT), as tumoral necrosis develops over time.

The creation of an ablation margin of greater than 5-10 mm around the tumor is considered essential for adequate ablation; thus, an ablation zone larger than the original tumor dimension is an expected finding. Furthermore, the ablation zone should not demonstrate residual enhancement because of the anticipated coagulation necrosis and cell death within the treatment cavity; this frequently results in the development of a central zone of hyper-intense signal on pre-contrast T1 weighted MRI and a hyperdense appearance on unenhanced CT, both are expected post-treatment findings^[43]. Subtraction (MRI) and non-contrast (CT) imaging are essential to avoid interpreting these imaging characteristics as areas of arterial phase hyperenhancement (APHE, [Figure 1](#)). Since the ablation zone represents devitalized liver parenchyma and tumor, reporting measurements of the ablated zone is not mandatory, rather, the residual nodular areas of enhancement suspicious for viable tumor should be described.

A uniform thin peripheral rim of enhancement is an expected post-ablation finding. Additionally, there can be geographic APHE within the parenchyma surrounding the treatment zone, which usually resolves, but can persist on portal venous and delayed phase imaging ([Figure 1](#)). APHE which resolves on portal venous and delayed phase of imaging is referred to as transient hepatic intensity/attenuation difference (THID/THAD), postulated to be secondary to arteriportal shunts created during needle puncture or coagulated portal vein branches resulting in compensatory increased arterial flow^[44]. Over time, the ablation cavity is expected to involute and stabilize in size. Imaging features suggestive of residual viable tumor post-treatment include: Thick peripheral irregular nodular APHE with or without washout appearance, “washout” alone, enhancement characteristics similar to pre-treatment tumor, or discontinuity in the smooth thin peripheral rim of enhancement^[45] ([Figure 2](#)).

As with ablation, non-radiation arterial-based therapies have a similar evolution of post-treatment appearances. TAE and TACE create ischemic and/or cytotoxic effects that result in cell necrosis; the tumor usually does not change in size early post-treatment, although rarely can slightly increase in size as a result of edema and hemorrhage. As with ablation, the treated tumor should become immediately non-enhancing after transarterial therapy. Often, there is a pronounced surrounding geographic enhancement pattern that persists on portal venous and delayed imaging, which represents perfusional changes secondary to inflammation and arterial embolization^[17].

One unique transarterial post-treatment feature is seen when iodized oil is used for embolization. In these instances, the treatment zone appears extremely hyperdense on unenhanced CT, secondary to iodized oil deposition within and around the tumor, limiting assessment for tumor viability on post contrast CT images^[46]. Evidence does suggest that the degree of iodized oil deposition within the tumor is an indicator of tumor necrosis, thus could possibly be used as an indirect feature for tumor response assessment; nonetheless, evaluation for residual tumoral enhancement is limited by the hyperdense appearance of the iodized oil. The iodized oil is not apparent on MRI, and thus MRI is preferred to evaluate for APHE in and around the treatment zone to assess for recurrent/viable disease. Just as with ablation, locally recurrent or residual viable HCC presents as irregular, nodular areas of APHE, APHE plus “washout”, “washout” alone, or enhancement similar to the pretreatment tumor, within or along the margin of the treated tumor ([Figure 3](#)). Some studies have reported that recurrence after TACE and RFA could result in dedifferentiation into more aggressive infiltrative tumor^[47-49], which tends to have an atypical appearance on post-therapy imaging ([Figure 4](#)); thus one must pay close attention for any changes in the treated tumor, particularly in size.

Radiation-based therapies result in post-treatment imaging appearances distinct from other therapies, particularly on the arterial phase of imaging. For example, early after SBRT and TARE transient increases in tumor size can be seen. Furthermore, tumor shrinkage is often delayed and slow, secondary to the cytostatic effects of TARE^[50]. Therefore, size measurements within 3-mo of treatment are not reliable for

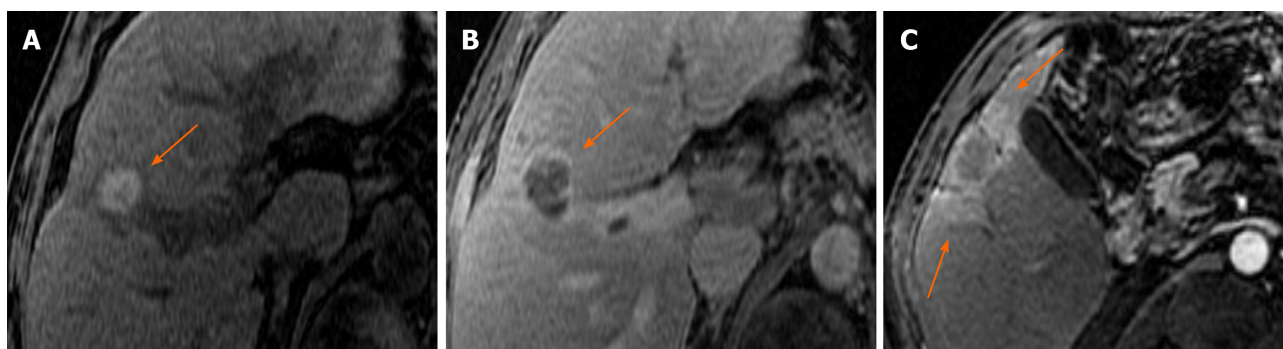


Figure 1 Spectrum of expected post treatment imaging appearances after successful LR TR Nonviable microwave ablation of LR 5 hepatocellular carcinoma in different patients. A: Hyperintense signal on pre-contrast T1 weighted image, which does not enhance (subtraction not shown); B: Thin continuous smooth rim of enhancement surrounding the ablation zone on portal venous phase of imaging; C: Mild peri-tumoral ill-defined geographic areas of arterial phase hyperenhancement within the parenchyma adjacent to the treatment cavity on arterial phase image, which becomes isoenhancing to the parenchyma on delayed phase of imaging (not shown).

prediction of tumor response^[18]. Enhancement patterns after TARE are also highly variable, as successfully treated tumors can demonstrate a range of imaging findings, including: (1) Persistent intra-tumoral APHE; (2) Geographic or nodular peri-tumoral APHE; (3) Thin rim of peri-tumoral APHE, and (4) Complete lack of enhancement (Figure 5). Of note, persistent central arterial hyperenhancement can be seen at 3 mo in tumors that have been treated by TARE, specifically in cases that show progressive decrease and eventual lack of enhancement over time from the delayed effects of radiation therapy. Thus, evaluation of these tumors poses a diagnostic and interpretation challenge. Key features suggestive of residual tumor after TARE includes new or enlarging nodular or mass-like APHE within or around the treated tumor and growth over time, particularly when identified more than 6 mo after treatment. Care should be taken not to mistake TARE-related peri-tumoral perfusional change with viable tumor. Close evaluation and comparison of the pre-treatment imaging to identify the tumor margins is essential; additionally, peritumoral parenchymal perfusion tends to be geographic in shape, and either persists on portal venous and delayed phases of imaging or becomes isoenhancing to the remainder of the hepatic parenchyma.

After SBRT, APHE with or without “washout” can persist for up to a year, and even longer, but these imaging features gradually decrease over time^[51] (Figure 6). Early post treatment, geographic APHE surrounding the treated tumor is a common finding and likely represents hyperemia; this eventually converts to progressive delayed phase geographic enhancement, likely secondary to radiation fibrosis, usually with associated findings of capsular retraction and peripheral intrahepatic biliary dilatation^[52]. The treated tumor should gradually decrease or stay stable in size during the time period where treatment response is evolving (Figure 6). Imaging features suggesting recurrent disease after SBRT include: Increase in size of the treated tumor or new or increasing intensity of APHE after treatment^[53]. Although the treated HCC often demonstrates persistent APHE after SBRT, the degree, or intensity, of APHE often decreases as it resolves. Thus, in treated HCC which originally demonstrates persistent but decreasing degree of enhancement or resolution of enhancement, the development of increasing intensity of enhancement or new APHE, is a feature suggesting LR.

LI-RADS TRA

LI-RADS TRA was created to improve the consistency and standardization in reporting treatment response after liver-directed therapy and, unlike other response assessment systems, it has a distinct advantage of providing assessment on a lesion-by-lesion basis, an approach which can potentially improve communications for individualized management considerations. LI-RADS TRA is modelled after mRECIST, as it primarily relies on post treatment APHE to identify viable tumor. However, LI-RADS TRA is unique, because in addition to APHE, the definition of viable tumor includes washout appearance or enhancement similar to that seen before treatment. This may render this advantageous when interpreting treatment response

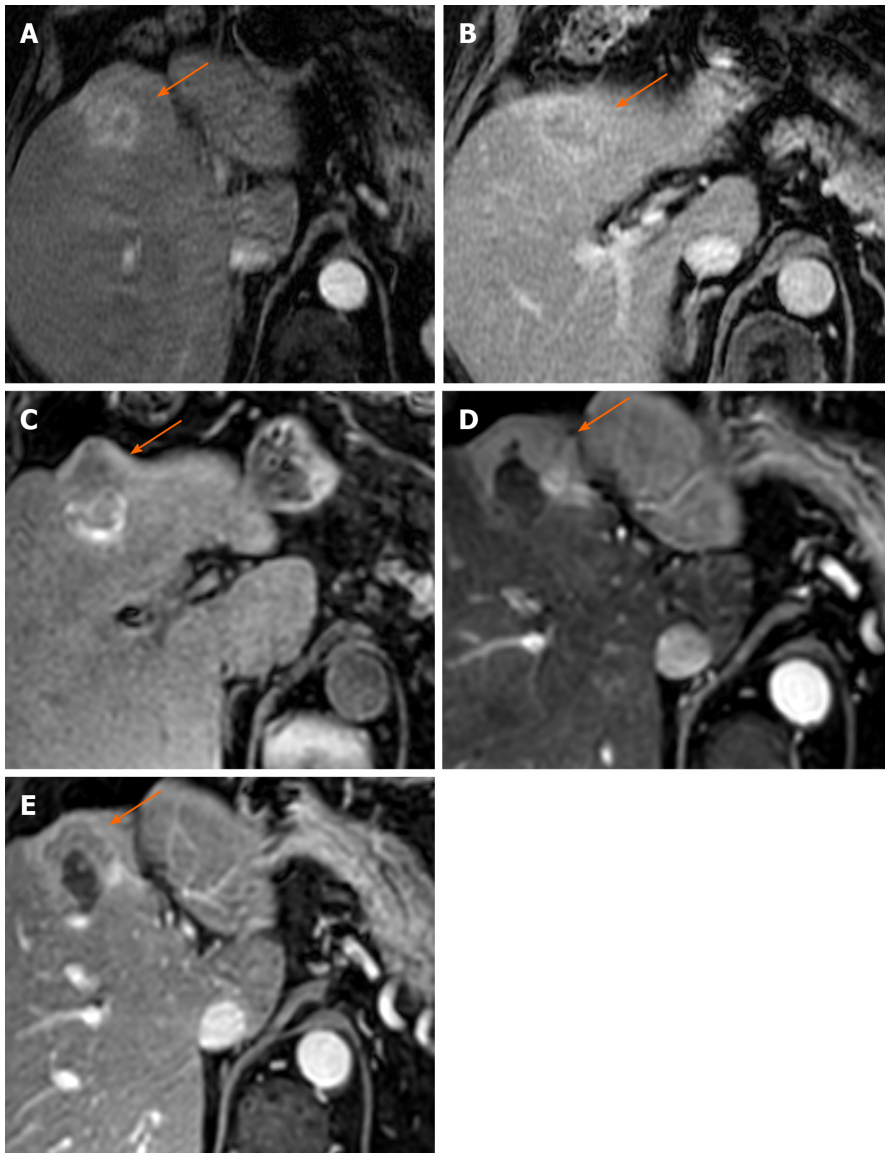


Figure 2 Eighty-three-year old male with nonalcoholic steatohepatitis related cirrhosis presented with a 3.5 cm mass demonstrating arterial phase hyperenhancement (APHE) (A) and “washout” (B), compatible with an LR-5 hepatocellular carcinoma; C: Pre-contrast T1 images 6 mo post microwave ablation demonstrate a hypointense nodular area along the anterior margin of the ablation cavity, with thick irregular nodular APHE on arterial phase (D) and “washout” and “capsule” on portal venous phase (E), LR-TR Viable.

after radiation-based therapies in particular.

During image interpretation of treated HCC, each treated liver observation should be reported separately according to the LR-TR categories^[54]. Treatment response categories include: “LR-TR Nonviable”, “LR-TR Equivocal” and “LR-TR Viable”. In instances where technical limitation precludes characterization of the tumor, an “LR-TR Nonevaluable” category can be assigned^[2,55].

LR TR Nonviable

If a treated lesion exhibits no tumoral enhancement or only shows a treatment specific enhancement pattern (which is unique for each LRT, such as thin rim enhancement after ablation), an LR-TR Nonviable category can be assigned^[54]. After ablation (MWA/RFA/cryoablation/PEI/IRE) and non-radiation arterial-based therapies (TAE/cTACE/DEB-TACE), a nonviable tumor category is assigned when there is complete tumor devascularization, *i.e.*, complete loss of APHE. One must carefully evaluate the margins of the treated lesion for the presence of nodular or irregular APHE and/or a discontinuous appearance of the thin rim of expected post-treatment enhancement, which suggests viable disease.

In contradistinction, after SBRT and TARE, there is often, but not always, persistent APHE and “washout” within the treated tumor, which can be seen for up to a year,

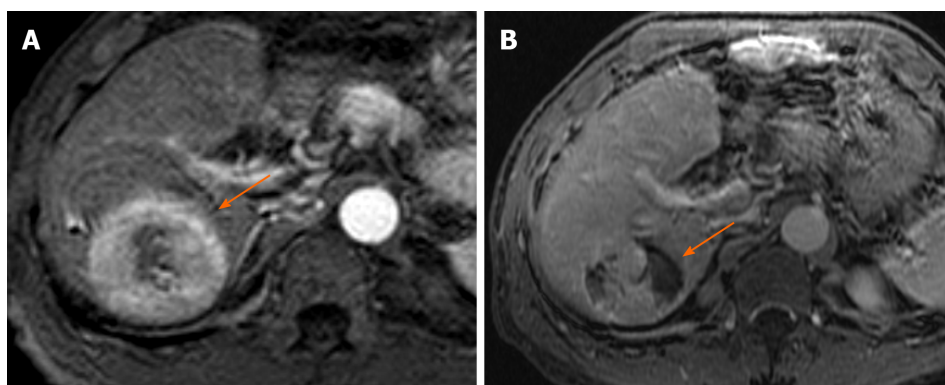


Figure 3 Fifty-four-year old male with hepatitis C virus presents with 5.4 cm hepatocellular carcinoma in the right lobe of the liver demonstrating arterial phase hyperenhancement on arterial phase of imaging (A), LR 5; 1 mo post-transarterial chemoembolization there is significant residual viable enhancing tumor with areas of necrosis on arterial phase imaging (B), LR-TR Viable.

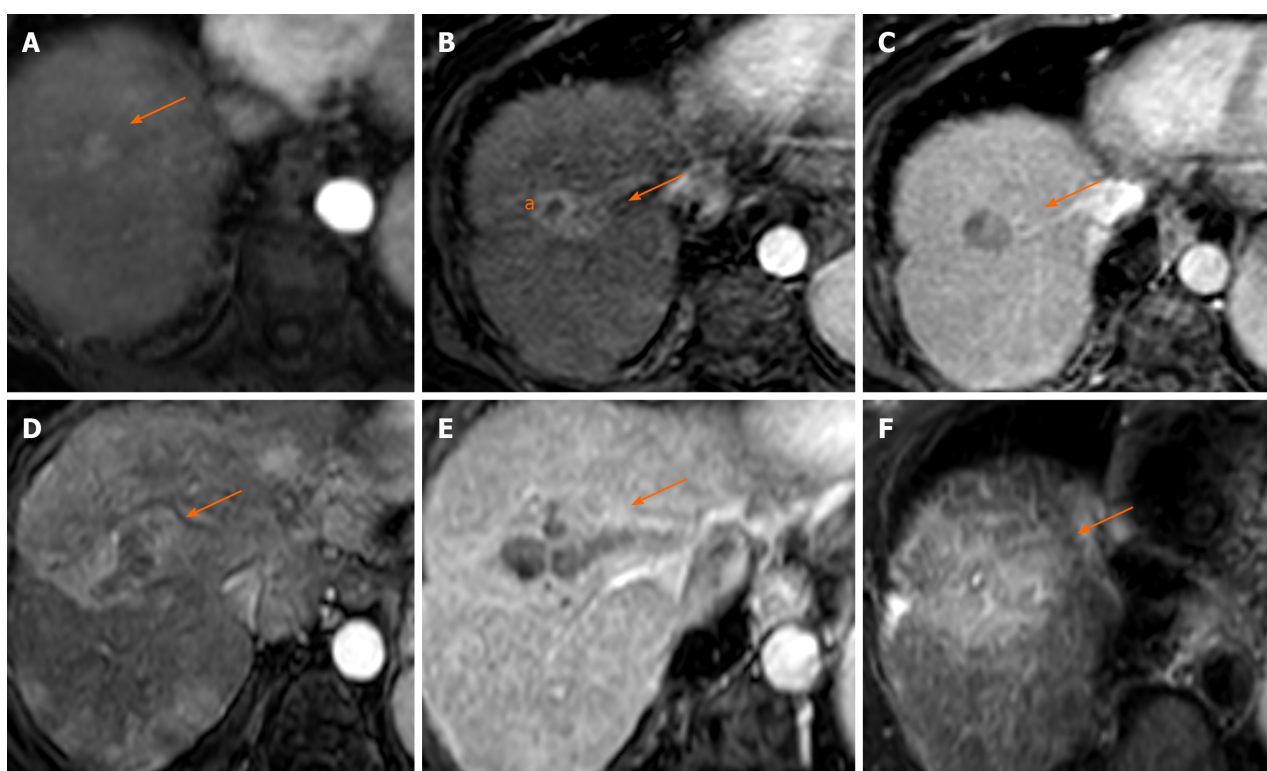


Figure 4 Seventy-three-year old woman with history of nonalcoholic steatohepatitis related cirrhosis presented with 1.5 cm mass in segment 8 with arterial phase hyperenhancement (APHE) (A) and washout (not shown), LR 5; 1 mo post transarterial chemoembolization (TACE) there is central necrosis with a smooth rim of enhancement (a) (B); however, along the medial edge of the treatment cavity is new ill-defined APHE (arrow) (B) with washout (C), LR TR Viable; 3 mo post re-TACE, there was interval development of infiltrative tumor with APHE on arterial phase (D), "washout" on portal venous phase (E) and T2W hyperintensity (F). In addition, new tumor thrombus was seen in the right portal vein (E), LR TR Viable with tumor in vein.

and sometimes longer. This creates a diagnostic dilemma during image interpretation since persistent APHE, albeit a treatment-specific expected appearance, denotes viable disease for other LRTs. Lack of radiology-pathology correlation studies in patients treated with SBRT for HCC limits interpretation of imaging features that translate to true viability or nonviability. Despite early post-treatment APHE after radiation therapy, this frequently resolves over time without additional therapy, and with subsequent decrease in size of the treated lesion (Figure 6). Thus, early post-treatment, a category of LR TR Viable may be misleading and result in unnecessary retreatment if the referring clinician does not understand the time course for tumoral necrosis resulting from radiation. Alternatively, even though APHE is an "expected" imaging feature, categorization as LR TR Nonviable may also be inaccurate if there is ongoing necrosis but residual viable tissue on pathology. Therefore, there is a current gap in

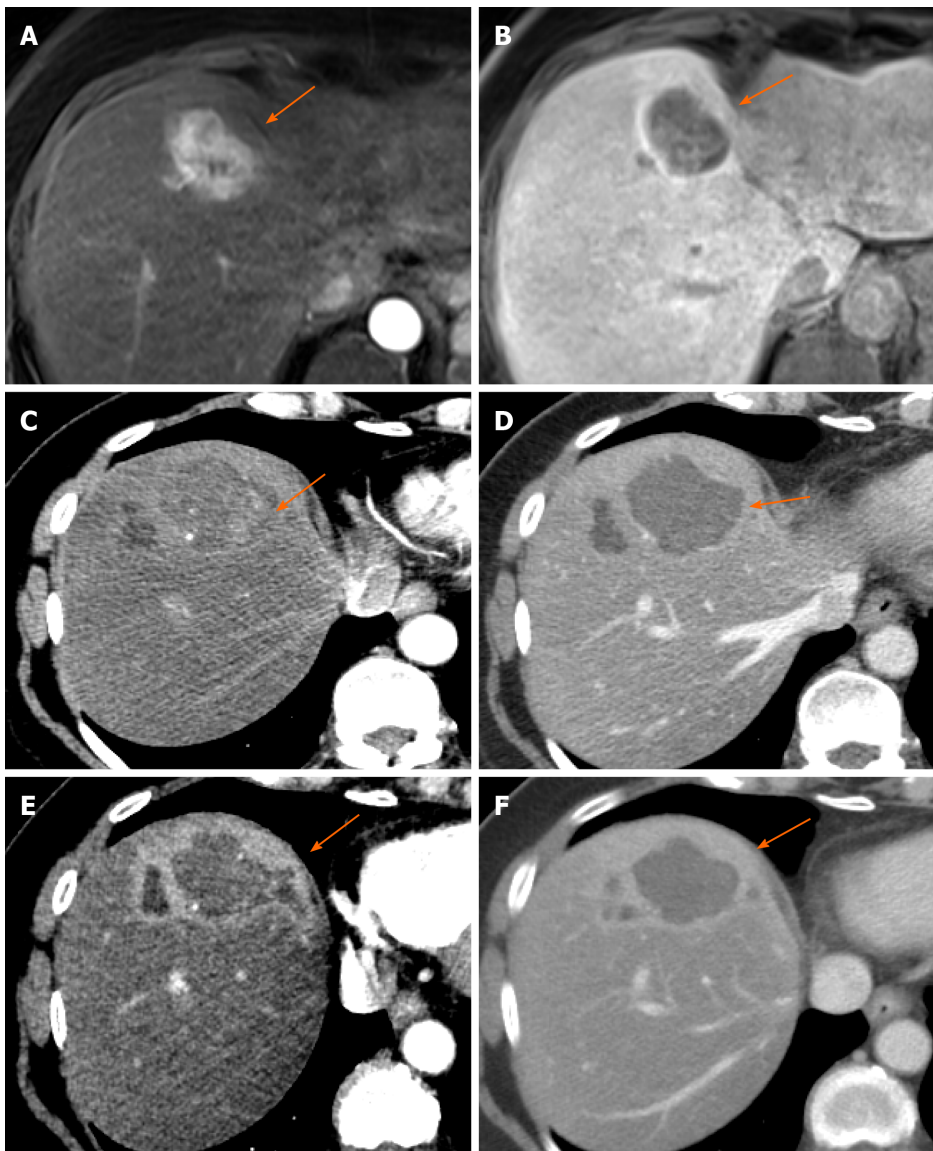


Figure 5 Sixty-two-year old female with LR 5 hepatocellular carcinoma within segment 4a of the liver, demonstrating arterial phase hyperenhancement (APHE) (A) and “washout” (B); 3 mo post transarterial radioembolization (TARE) there is persistent arterial phase nodular enhancement (arrow) (C) with associated “washout” on portal venous phase (D) within the largely necrotic treatment cavity, LR TR Equivocal; 6 mo post-TARE, the treatment cavity decreases in size and the nodular area of APHE is no longer identified on arterial phase (E) and portal venous phase (F), LR TR Nonviable; geographic APHE in the surrounding parenchyma is compatible with post-radiation changes (E and F).

knowledge in the application of LI-RADS TRA after radiation therapy, given the absence of radiology-pathology correlation. Notably, this feature of APHE renders TRA after radiation therapy a challenge with all existing treatment response classification systems.

LR TR Viable

The LR-TR Viable category is considered if there is presence of nodular, mass-like or thick irregular tissue within or along the treated tumor with any of the following features: APHE, washout appearance or enhancement similar to pre-treatment imaging^[54]. After ablation or non-radiation arterial-based LRT, this is fairly straightforward; however, for the reasons mentioned above, assigning LR-TR Viable to lesions early after SBRT and TARE therapy remains a diagnostic challenge as APHE is an expected post-treatment imaging finding that can evolve into nonviable disease on subsequent exam^[56]. The expected temporal evolution of HCC treated with radiation-based LRT results in decreasing degree/intensity of enhancement with a gradual decrease in size. If there is new or increasing enhancement of the treated tumor or an increase in size of the enhancing tumor post SBRT or TARE, then the LR TR Viable

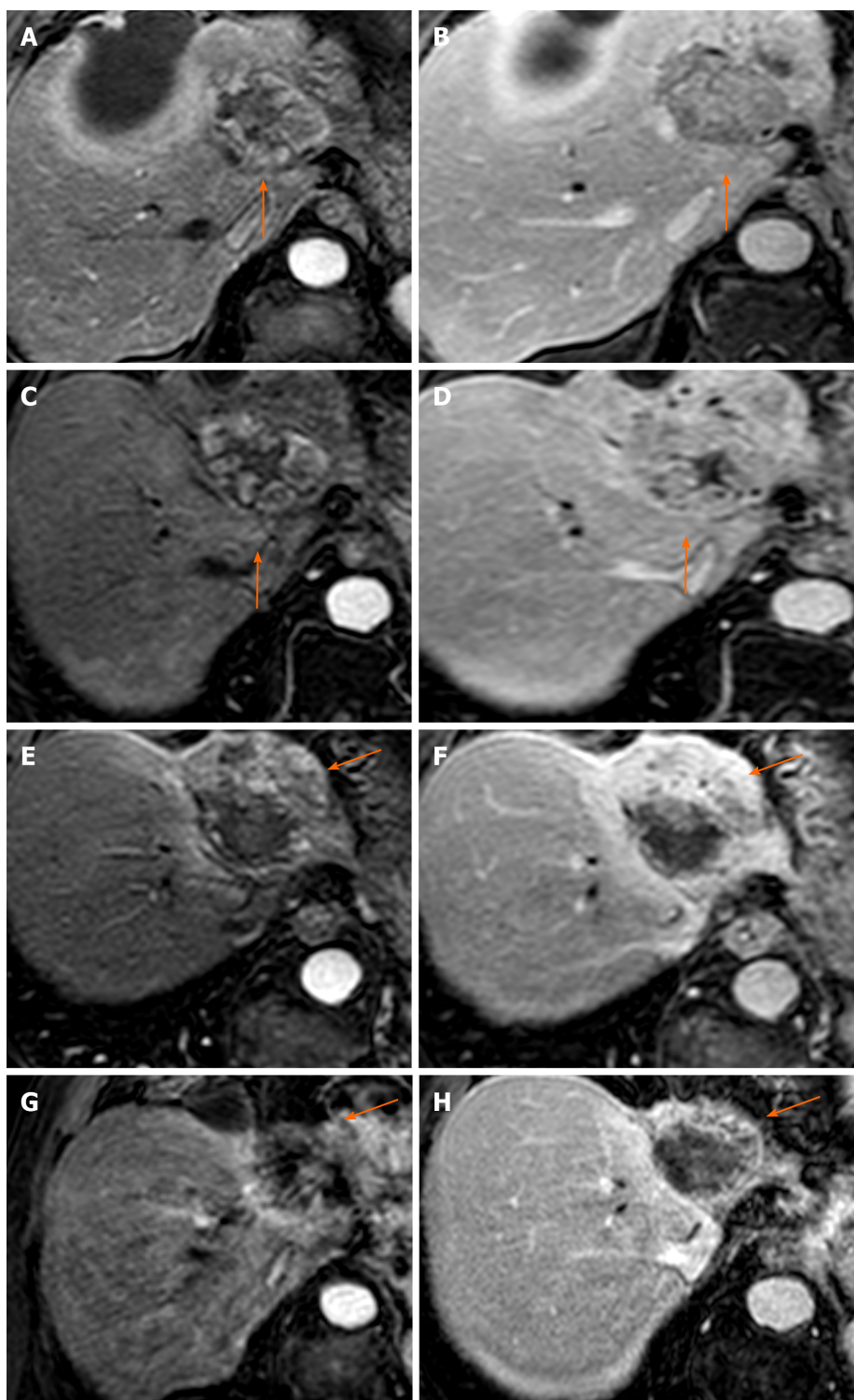


Figure 6 Fifty-eight-year old male presenting 3 mo post transarterial chemoembolization for follow up of a 7.2 cm LR 5 hepatocellular carcinoma. Persistent thick nodular peripheral arterial phase hyperenhancement (APHE) of the treated tumor (A) with “washout” on portal venous phase (B), LR-TR Viable. This lesion was subsequently treated with stereotactic body radiotherapy (SBRT). Three months post SBRT there is persistent APHE on arterial phase (C) and “washout” on portal venous phase (D), with no change in size, LR-TR Viable or Equivocal. Six months post SBRT, there is decreasing size of the tumor to 6.3 cm with decreasing APHE and increasing necrosis, albeit persistent APHE (E) and “washout” (F), LR-TR Equivocal. Fifteen months post SBRT, further decrease in size to 5.1 cm, now with minimal residual APHE (G) and “washout” (H), LR-TR Nonviable.

category should be assigned.

LR-TR Equivocal

A unique aspect of the LI-RADS TRA is the addition of a novel category, LR TR Equivocal. This category allows reporting of lesions when there is uncertainty in viability or nonviability, allowing short-term follow-up for re-evaluation. This is

particularly useful given the increasing complexity in post-treatment imaging appearances, particularly after radiation-based therapies.

The LR-TR Equivocal category is defined as enhancement atypical for treatment specific enhancement pattern and not meeting criteria for probably or definitely viable tumor^[54]. There are instances when imaging findings are equivocal following LRT, particularly after arterial-based and radiation-based therapies, which also affect the hepatic parenchyma adjacent to the targeted tumor. The result is the presence of abnormal areas of APHE as a result of altered perfusion around the treated tumor, which can mimic viable disease. In these cases, it may be prudent to assign an LR-TR Equivocal category unless the perfusional alteration is clearly geographic in appearance. While this category may result in increased frequency of follow-up imaging, as well as the risk that viable tumor is left untreated, HCC is generally a slow growing tumor with a double timing of 85.7-117 d^[57,58]. Thus, a “wait and watch” approach with 2-3 mo interval imaging can help distinguish true residual disease from benign parenchymal perfusional alterations.

EMERGING EVIDENCE

While the LI-RADS TRA was designed to complement other existing treatment response systems, its utility is limited, as it needs to be validated in clinical practice. There have been a number of recent publications evaluating the performance of LI-RADS TRA. These studies compare imaging to pathologic data, as well as measure the reliability of the TRA categories with inter-reader studies.

Evidence from recent literature suggests moderate inter-reader agreement in assigning LR-TR categories following LRT (ablation and non-radiation arterial-based therapies) for HCC. Two recent studies, Cools *et al*^[59] and Chaudhry *et al*^[60], have shown high inter-reader agreement in determining LR TR category after thermal ablation (RFA/MWA), with an inter-reader reliability of 90% and 95% and kappa of 0.75 (Standard Error \pm 0.09) and 0.71 (95% CI: 0.59-0.84), respectively. Inter-reader agreements are slightly lower when comparing LR TR categorization after non-radiation arterial-based therapy for HCC. Seo *et al*^[61], in which 78.6% of tumors were treated with TACE and imaged with either CT or MRI and Shropshire *et al*^[62] in which all tumors were treated with TAE and imaging with MRI, reported kappas of 0.69 (CT) and 0.56 (MRI), and 0.55, respectively. These differences in inter-reader agreement between thermal ablation and arterial therapy is not surprising, since the expected imaging appearance post-ablation is simpler compared to the often complex imaging features seen after transcatheter arterial based therapies.

In addition to inter-reader reliability studies, validation studies evaluating the sensitivity and specificity of LR TR algorithm to predict tumor necrosis with radiology-pathology correlation are necessary. Chaudhry *et al*^[60] reported that 81% of HCC post-TACE which were categorized as LR-TR Nonviable demonstrate 100% necrosis on pathology. Similarly, Shropshire *et al*^[62], reported that 67%-71% of tumors categorized as LR-TR Nonviable after TAE were 100% necrotic at pathology. The reported incidence is not surprising, since the gold standard histopathology would call anything less than 100% necrotic as viable disease. Thus, while microscopic viable tumor is present in a moderate percentage of treated HCC that are deemed nonviable based on imaging features, the clinical significance based on local tumor progression, disease free survival and impact on OS are yet to be determined. Microscopic viable tumor may be of little clinical significance, particularly since national and international guidelines accept the presence of viable tumor, at a specific size threshold, in patients undergoing transplantation. Although, post-liver transplant, achieving a complete pathologic response has been shown to strongly predict tumor-free survival^[63].

These studies also reported high sensitivity and specificities when evaluating the radiology-pathology concordance with LR TR Viable categorization. Chaudhry *et al*^[60] report 73% of treated lesions characterized as viable disease had < 99% necrosis and Shropshire *et al*^[62] report 60%-65% of disease reported as LR TR viable had < 99% necrosis.

The LR-TR Equivocal category has a relatively low sensitivity for predicting tumor necrosis. Radiology-pathology correlation after thermal ablation report that 83% of treated tumors categorized as LR TR Equivocal demonstrate viable neoplasm at pathology; similarly, after TAE, 71% of treated lesions categorized as LR TR Equivocal demonstrate viable neoplasm at pathology^[60,62]. Seo *et al*^[61] report that 93%-100% of the HCC's treated with TACE, RFA or in combination, which were categorized as LR-TR Equivocal, demonstrated viable disease. All three studies thus report similar findings

with a high percentage showing viable tumor at histopathology when treated tumor is assigned LR-TR Equivocal category. When LR-TR Equivocal categorization was treated as equivalent to viable disease in one study, sensitivity and specificity of detecting viable disease increased from 40%-77% to 81%-85%, across readers^[60]. As previously mentioned, these findings are likely related to the ability of pathology to determine microscopic viable tumor which is not evident on imaging. Of note, the ACR LI-RADS manual states that the LR-TR categories were designed to help provide a probability of the presence of viable tumor and do not correspond to histologic viability; hence the presence of microscopic tumor cannot be excluded based on imaging alone^[54]. As mentioned above, the impact of microscopic viable HCC in the setting of cirrhosis is yet to be determined in relation to a patient's OS, disease free survival and time to local progression. Although the results show that there is a high rate of viable disease in the LR-TR Equivocal category, further data is needed before its elimination as a concept.

The above studies include HCC treated only with thermal ablation or non-radiation arterial-based therapies. As mentioned earlier, HCC treated with radiation-based therapy has unique post-treatment imaging features of persistent APHE which confounds image interpretation and can result in a high false positive rate of LR TR Viable categorization. The current challenge is the limited number of studies evaluating radiology-pathology correlation after radiation-based LRT. A study by Mendiratta-Lala *et al.*^[64], in which 10 SBRT treated HCC's had corresponding explant or AFP values as a surrogate biomarker, reported imaging findings of persistent APHE (4/10) and washout (9/10) at 12 mo, in which all of the treated HCC showed complete tumor necrosis on explant pathology or normalization of AFP values. Moore *et al.*^[65] evaluated the role of SBRT as bridge to liver transplantation for early stage inoperable disease in a small cohort, and reported no SBRT-related mortality or recurrence. Amongst the explants, there were 3 (27%) that showed CR, 6 (54.5%) pathological partial response and 2 (18%) pathological stable disease. Currently, no inter-reader agreement studies have been performed assessing LI-RADS treatment response categories in patient treated with radiation-based therapies and explant pathology to determine actual tumor necrosis. Similar gaps in knowledge are present for the use of mRECIST in patients treated with SBRT.

Riaz *et al.*^[66] evaluated the degree of tumor necrosis on explant pathology in 37 lesions post TARE and found complete pathologic necrosis in 61% of the lesions, even in the setting of residual nodular enhancement on imaging pre-transplant. Radiologic findings of these treated lesions were compared to the pathologic findings to determine the predictability of actual tumor necrosis by imaging. WHO and EASL treatment response categories were assigned as CR in 78% and 100% of lesions at a median time of 34 d (95%CI: 29-43) and 126 d (95%CI: 80.2-313.2), respectively. It was also noted that the longer the time to liver transplant, the greater the degree of tumor necrosis identified within the lesion, with the least percentage of tumor necrosis seen in explants at 3 mo post TARE^[66]. Thus, it is possible that residual APHE in the early post TARE treatment period does correspond to some viable disease, but it is viable disease that will decrease over time as the radiation effects progress. In this context, LR-TR Equivocal may be the best option for TARE treated lesions in the first three months of treatment. As mentioned previously, currently all of the treatment response classification systems are limited in their ability to accurately assess treatment response after radiation-based therapy given the persistence of APHE early post-treatment.

MANAGEMENT BASED ON LR-TR CATEGORIES

With the advent of different types of LRT for treatment of HCC, it is extremely challenging to develop a dedicated management pathway that can be applicable to all patients. Thus, while no specific management recommendations exist, LI-RADS TRA provides lesion by lesion assessment which, when discussed in a multidisciplinary setting, may allow improved communication and management in this cohort of patients. However, unlike mRECIST, EASL, WHO and RECIST which have a multitude of validating literature, the LR-TR algorithm is relatively new. Future anticipated studies validating the LR-TR algorithm will therefore improve our ability to create standardized guidelines for post treatment management and better predict outcomes.

CURRENT LIMITATIONS OF LI-RADS TRA

The main limitation of LI-RADS TRA is the small number validation studies, given its recent introduction in 2017, although the published sensitivity/specificity for a subset of LRTs is promising. Further studies investigating its use in tumors treated with radiation-based therapy are sorely needed. Second, the LR TR algorithm is not yet applicable to tumor treated with systemic and/or biologic therapy. Given that LRT is increasingly used in combination with systemic therapy, this will remain a challenge to address. Third, there is no dedicated post-treatment specific imaging follow-up interval recommendation, partly due to the variable evolution of post treatment necrosis after different forms of LRT, and institution-specific imaging protocol. Fourth, the long-term utility of the LR-TR Equivocal category remains to be seen, given the evidence that most LR-TR Equivocal lesions are viable in the studies published to date.

CONCLUSION

With the increasing incidence of HCC and the increasing number of LRTs available, the complexity in assessing treatment response will also rise. Nevertheless, post treatment imaging will always play a critical role in providing the clinician a road map to direct further management. It is thus essential for diagnostic radiologists to understand interpretation of post-treatment imaging findings specific to each form of LRT. Current existing treatment response classification systems such as RECIST, mRECIST, EASL and WHO are fraught with their own unique limitations when assessing LRT for HCC, including lack of change in size post-treatment (thus rendering RECIST and WHO limited), and persistent post-treatment enhancement after radiation-based therapies (thus rendering mRECIST and EASL limited). LI-RADS TRA provides a new framework to describe treatment response for each individual lesion and the emerging evidence is promising for ablation and non-radiation based arterial therapies. LI-RADS TRA should be used cautiously for radiation-based therapies (TARE, SBRT) in which early post-treatment persistent APHE is common and expected. Its current limitations will be addressed as future studies investigate its performance and inform refinements of future versions.

REFERENCES

- 1 **Marrero JA**, Kulik LM, Sirlin CB, Zhu AX, Finn RS, Abecassis MM, Roberts LR, Heimbach JK. Diagnosis, Staging, and Management of Hepatocellular Carcinoma: 2018 Practice Guidance by the American Association for the Study of Liver Diseases. *Hepatology* 2018; **68**: 723-750 [PMID: [29624699](#) DOI: [10.1002/hep.29913](#)]
- 2 **Kielar A**, Fowler KJ, Lewis S, Yaghamai V, Miller FH, Yarmohammadi H, Kim C, Chernyak V, Yokoo T, Meyer J, Newton I, Do RK. Locoregional therapies for hepatocellular carcinoma and the new LI-RADS treatment response algorithm. *Abdom Radiol (NY)* 2018; **43**: 218-230 [PMID: [28780679](#) DOI: [10.1007/s00261-017-1281-6](#)]
- 3 **Altekruse SF**, McGlynn KA, Reichman ME. Hepatocellular carcinoma incidence, mortality, and survival trends in the United States from 1975 to 2005. *J Clin Oncol* 2009; **27**: 1485-1491 [PMID: [19224838](#) DOI: [10.1200/JCO.2008.20.7753](#)]
- 4 **Cho YK**, Rhim H, Noh S. Radiofrequency ablation *versus* surgical resection as primary treatment of hepatocellular carcinoma meeting the Milan criteria: a systematic review. *J Gastroenterol Hepatol* 2011; **26**: 1354-1360 [PMID: [21679247](#) DOI: [10.1111/j.1440-1746.2011.06812.x](#)]
- 5 **Salem R**, Gordon AC, Mouli S, Hickey R, Kallini J, Gabr A, Mulcahy MF, Baker T, Abecassis M, Miller FH, Yaghamai V, Sato K, Desai K, Thornburg B, Benson AB, Rademaker A, Ganger D, Kulik L, Lewandowski RJ. Y90 Radioembolization Significantly Prolongs Time to Progression Compared With Chemoembolization in Patients With Hepatocellular Carcinoma. *Gastroenterology* 2016; **151**: 1155-1163.e2 [PMID: [27575820](#) DOI: [10.1053/j.gastro.2016.08.029](#)]
- 6 **Shi M**, Lu LG, Fang WQ, Guo RP, Chen MS, Li Y, Luo J, Xu L, Zou RH, Lin XJ, Zhang YQ. Roles played by chemolipiodolization and embolization in chemoembolization for hepatocellular carcinoma: single-blind, randomized trial. *J Natl Cancer Inst* 2013; **105**: 59-68 [PMID: [23150720](#) DOI: [10.1093/jnci/djs464](#)]
- 7 **Facciorusso A**, Di Maso M, Muscatello N. Microwave ablation *versus* radiofrequency ablation for the treatment of hepatocellular carcinoma: A systematic review and meta-analysis. *Int J Hyperthermia* 2016; **32**: 339-344 [PMID: [26794414](#) DOI: [10.3109/02656736.2015.1127434](#)]
- 8 **Llovet JM**, Bruix J. Systematic review of randomized trials for unresectable hepatocellular carcinoma: Chemoembolization improves survival. *Hepatology* 2003; **37**: 429-442 [PMID: [12540794](#) DOI: [10.1053/jhep.2003.50047](#)]
- 9 **Marelli L**, Stigliano R, Triantos C, Senzolo M, Cholongitas E, Davies N, Tibbals J, Meyer T, Patch DW, Burroughs AK. Transarterial therapy for hepatocellular carcinoma: which technique is more effective? A systematic review of cohort and randomized studies. *Cardiovasc Intervent Radiol* 2007; **30**: 6-25 [PMID: [17344444](#) DOI: [10.1007/s00261-006-0001-0](#)]

- 17103105 DOI: [10.1007/s00270-006-0062-3](https://doi.org/10.1007/s00270-006-0062-3)]
- 10 **Meyer T**, Kirkwood A, Roughton M, Beare S, Tsochatzis E, Yu D, Davies N, Williams E, Pereira SP, Hochhauser D, Mayer A, Gillmore R, O'Beirne J, Patch D, Burroughs AK. A randomised phase II/III trial of 3-weekly cisplatin-based sequential transarterial chemoembolisation vs embolisation alone for hepatocellular carcinoma. *Br J Cancer* 2013; **108**: 1252-1259 [PMID: [23449352](https://pubmed.ncbi.nlm.nih.gov/23449352/) DOI: [10.1038/bjc.2013.85](https://doi.org/10.1038/bjc.2013.85)]
 - 11 **Molla N**, AlMenieir N, Simoneau E, Aljiffry M, Valenti D, Metrakos P, Boucher LM, Hassanain M. The role of interventional radiology in the management of hepatocellular carcinoma. *Curr Oncol* 2014; **21**: e480-e492 [PMID: [24940108](https://pubmed.ncbi.nlm.nih.gov/24940108/) DOI: [10.3747/co.21.1829](https://doi.org/10.3747/co.21.1829)]
 - 12 **Heckman JT**, Devera MB, Marsh JW, Fontes P, Amesur NB, Holloway SE, Nalesnik M, Geller DA, Steel JL, Gamblin TC. Bridging locoregional therapy for hepatocellular carcinoma prior to liver transplantation. *Ann Surg Oncol* 2008; **15**: 3169-3177 [PMID: [18696158](https://pubmed.ncbi.nlm.nih.gov/18696158/) DOI: [10.1245/s10434-008-0071-3](https://doi.org/10.1245/s10434-008-0071-3)]
 - 13 **Gamblin TC**, Geller DA. Downstaging hepatocellular carcinoma prior to liver transplantation. *Liver Transpl* 2005; **11**: 1466-1468 [PMID: [16315292](https://pubmed.ncbi.nlm.nih.gov/16315292/) DOI: [10.1002/Lt.20528](https://doi.org/10.1002/Lt.20528)]
 - 14 **Mora RA**, Ali R, Gabr A, Abouchaleh N, Asadi AA, Kallini JR, Miller FH, Yaghamai V, Mouli S, Thornburg B, Desai K, Riaz A, Lewandowski RJ, Salem R. Pictorial essay: imaging findings following Y90 radiation segmentectomy for hepatocellular carcinoma. *Abdom Radiol (NY)* 2018; **43**: 1723-1738 [PMID: [29147766](https://pubmed.ncbi.nlm.nih.gov/29147766/) DOI: [10.1007/s00261-017-1391-1](https://doi.org/10.1007/s00261-017-1391-1)]
 - 15 **Galun D**, Basaric D, Zuvela M, Bulajic P, Bogdanovic A, Bidzic N, Milicevic M. Hepatocellular carcinoma: From clinical practice to evidence-based treatment protocols. *World J Hepatol* 2015; **7**: 2274-2291 [PMID: [26380652](https://pubmed.ncbi.nlm.nih.gov/26380652/) DOI: [10.4254/wjh.v7.i20.2274](https://doi.org/10.4254/wjh.v7.i20.2274)]
 - 16 **Bruix J**, Sherman M, Llovet JM, Beaugrand M, Lencioni R, Burroughs AK, Christensen E, Pagliaro L, Colombo M, Rodés J, EASL Panel of Experts on HCC. Clinical management of hepatocellular carcinoma. Conclusions of the Barcelona-2000 EASL conference. European Association for the Study of the Liver. *J Hepatol* 2001; **35**: 421-430 [PMID: [11592607](https://pubmed.ncbi.nlm.nih.gov/11592607/) DOI: [10.1016/s0168-8278\(01\)00130-1](https://doi.org/10.1016/s0168-8278(01)00130-1)]
 - 17 **Lencioni R**, Llovet JM. Modified RECIST (mRECIST) assessment for hepatocellular carcinoma. *Semin Liver Dis* 2010; **30**: 52-60 [PMID: [20175033](https://pubmed.ncbi.nlm.nih.gov/20175033/) DOI: [10.1055/s-0030-1247132](https://doi.org/10.1055/s-0030-1247132)]
 - 18 **Gaba RC**, Lewandowski RJ, Hickey R, Baerlocher MO, Cohen EI, Dariushnia SR, Janne d'Othée B, Padia SA, Salem R, Wang DS, Nikolic B, Brown DB; Society of Interventional Radiology Technology Assessment Committee. Transcatheter Therapy for Hepatic Malignancy: Standardization of Terminology and Reporting Criteria. *J Vasc Interv Radiol* 2016; **27**: 457-473 [PMID: [26851158](https://pubmed.ncbi.nlm.nih.gov/26851158/) DOI: [10.1016/j.jvir.2015.12.752](https://doi.org/10.1016/j.jvir.2015.12.752)]
 - 19 **Yu H**, Burke CT. Comparison of percutaneous ablation technologies in the treatment of malignant liver tumors. *Semin Intervent Radiol* 2014; **31**: 129-137 [PMID: [25071303](https://pubmed.ncbi.nlm.nih.gov/25071303/) DOI: [10.1055/s-0034-1373788](https://doi.org/10.1055/s-0034-1373788)]
 - 20 **Inchingolo R**, Posa A, Mariappan M, Spiliopoulos S. Locoregional treatments for hepatocellular carcinoma: Current evidence and future directions. *World J Gastroenterol* 2019; **25**: 4614-4628 [PMID: [31528090](https://pubmed.ncbi.nlm.nih.gov/31528090/) DOI: [10.3748/wjg.v25.i32.4614](https://doi.org/10.3748/wjg.v25.i32.4614)]
 - 21 **Guan YS**, Sun L, Zhou XP, Li X, Zheng XH. Hepatocellular carcinoma treated with interventional procedures: CT and MRI follow-up. *World J Gastroenterol* 2004; **10**: 3543-3548 [PMID: [15534903](https://pubmed.ncbi.nlm.nih.gov/15534903/) DOI: [10.3748/wjg.v10.i24.3543](https://doi.org/10.3748/wjg.v10.i24.3543)]
 - 22 **Cho YK**, Kim JK, Kim MY, Rhim H, Han JK. Systematic review of randomized trials for hepatocellular carcinoma treated with percutaneous ablation therapies. *Hepatology* 2009; **49**: 453-459 [PMID: [19065676](https://pubmed.ncbi.nlm.nih.gov/19065676/) DOI: [10.1002/hep.22648](https://doi.org/10.1002/hep.22648)]
 - 23 **Livraghi T**, Goldberg SN, Lazzaroni S, Meloni F, Solbiati L, Gazelle GS. Small hepatocellular carcinoma: treatment with radio-frequency ablation versus ethanol injection. *Radiology* 1999; **210**: 655-661 [PMID: [10207464](https://pubmed.ncbi.nlm.nih.gov/10207464/) DOI: [10.1148/radiology.210.3.r99fe40655](https://doi.org/10.1148/radiology.210.3.r99fe40655)]
 - 24 **Facciorusso A**, Serviddio G, Muscatiello N. Local ablative treatments for hepatocellular carcinoma: An updated review. *World J Gastrointest Pharmacol Ther* 2016; **7**: 477-489 [PMID: [27867681](https://pubmed.ncbi.nlm.nih.gov/27867681/) DOI: [10.4292/wjgpt.v7.i4.477](https://doi.org/10.4292/wjgpt.v7.i4.477)]
 - 25 **Signoriello S**, Annunziata A, Lama N, Signoriello G, Chiodini P, De Sio I, Daniele B, Di Costanzo GG, Calise F, Olivieri G, Castaldo V, Lanzetta R, Piai G, Marone G, Visconti M, Fusco M, Di Maio M, Perrone F, Gallo C, Gaeta GB. Survival after locoregional treatments for hepatocellular carcinoma: a cohort study in real-world patients. *ScientificWorldJournal* 2012; **2012**: 564706 [PMID: [22654628](https://pubmed.ncbi.nlm.nih.gov/22654628/) DOI: [10.1100/2012/564706](https://doi.org/10.1100/2012/564706)]
 - 26 **Yang B**, Zan RY, Wang SY, Li XL, Wei ML, Guo WH, You X, Li J, Liao ZY. Radiofrequency ablation versus percutaneous ethanol injection for hepatocellular carcinoma: a meta-analysis of randomized controlled trials. *World J Surg Oncol* 2015; **13**: 96 [PMID: [25889181](https://pubmed.ncbi.nlm.nih.gov/25889181/) DOI: [10.1186/s12957-015-0516-7](https://doi.org/10.1186/s12957-015-0516-7)]
 - 27 **de Baere T**, Arai Y, Lencioni R, Geschwind JF, Rilling W, Salem R, Matsui O, Soulen MC. Treatment of Liver Tumors with Lipiodol TACE: Technical Recommendations from Experts Opinion. *Cardiovasc Intervent Radiol* 2016; **39**: 334-343 [PMID: [26390875](https://pubmed.ncbi.nlm.nih.gov/26390875/) DOI: [10.1007/s00270-015-1208-y](https://doi.org/10.1007/s00270-015-1208-y)]
 - 28 **Katsanos K**, Kitrou P, Spiliopoulos S, Maroulis I, Petsas T, Karnabatidis D. Comparative effectiveness of different transarterial embolization therapies alone or in combination with local ablative or adjuvant systemic treatments for unresectable hepatocellular carcinoma: A network meta-analysis of randomized controlled trials. *PLoS One* 2017; **12**: e0184597 [PMID: [28934265](https://pubmed.ncbi.nlm.nih.gov/28934265/) DOI: [10.1371/journal.pone.0184597](https://doi.org/10.1371/journal.pone.0184597)]
 - 29 **Huppert P**. Current concepts in transarterial chemoembolization of hepatocellular carcinoma. *Abdom Imaging* 2011; **36**: 677-683 [PMID: [21674193](https://pubmed.ncbi.nlm.nih.gov/21674193/) DOI: [10.1007/s00261-011-9755-4](https://doi.org/10.1007/s00261-011-9755-4)]
 - 30 **Piscaglia F**, Ogasawara S. Patient Selection for Transarterial Chemoembolization in Hepatocellular Carcinoma: Importance of Benefit/Risk Assessment. *Liver Cancer* 2018; **7**: 104-119 [PMID: [29662837](https://pubmed.ncbi.nlm.nih.gov/29662837/) DOI: [10.1159/000485471](https://doi.org/10.1159/000485471)]
 - 31 **Madoff DC**, Kim D, Holzwanger DJ, Kishore SA, Friedman T. Management of Advanced Stage Hepatocellular Carcinoma with Extensive Portal Vein Tumor Thrombus Using an Adjustable Dual Balloon Occlusion Technique. *J Vasc Interv Radiol* 2019; **30**: 1145-1147 [PMID: [31133450](https://pubmed.ncbi.nlm.nih.gov/31133450/) DOI: [10.1016/j.jvir.2019.01.006](https://doi.org/10.1016/j.jvir.2019.01.006)]
 - 32 **Lu J**, Zhang XP, Zhong BY, Lau WY, Madoff DC, Davidson JC, Qi X, Cheng SQ, Teng GJ. Management of patients with hepatocellular carcinoma and portal vein tumour thrombosis: comparing east and west. *Lancet*

- Gastroenterol Hepatol* 2019; **4**: 721-730 [PMID: [31387735](#) DOI: [10.1016/S2468-1253\(19\)30178-5](#)]
- 33 **Yasui D**, Murata S, Ueda T, Sugihara F, Onozawa S, Kawamoto C, Kumita S. Novel treatment strategy for advanced hepatocellular carcinoma: combination of conventional transcatheter arterial chemoembolization and modified method with portal vein occlusion for cases with arteriportal shunt: a preliminary study. *Acta Radiol* 2018; **59**: 266-274 [PMID: [28651444](#) DOI: [10.1177/0284185117717762](#)]
- 34 **Meza-Junco J**, Montano-Loza AJ, Liu DM, Sawyer MB, Bain VG, Ma M, Owen R. Locoregional radiological treatment for hepatocellular carcinoma; Which, when and how? *Cancer Treat Rev* 2012; **38**: 54-62 [PMID: [21726960](#) DOI: [10.1016/j.ctrv.2011.05.002](#)]
- 35 **Lammer J**, Malagari K, Vogl T, Pilleul F, Denys A, Watkinson A, Pitton M, Sergent G, Pfammatter T, Terraz S, Benhamou Y, Avajon Y, Gruenberger T, Pomoni M, Langenberger H, Schuchmann M, Dumortier J, Mueller C, Chevallier P, Lencioni R; PRECISION V Investigators. Prospective randomized study of doxorubicin-eluting-bead embolization in the treatment of hepatocellular carcinoma: results of the PRECISION V study. *Cardiovasc Intervent Radiol* 2010; **33**: 41-52 [PMID: [19908093](#) DOI: [10.1007/s00270-009-9711-7](#)]
- 36 **Tsochatzis EA**, Fatourou E, O'Beirne J, Meyer T, Burroughs AK. Transarterial chemoembolization and bland embolization for hepatocellular carcinoma. *World J Gastroenterol* 2014; **20**: 3069-3077 [PMID: [24695579](#) DOI: [10.3748/wjg.v20.i12.3069](#)]
- 37 **Cammà C**, Schepis F, Orlando A, Albanese M, Shahied L, Trevisani F, Andreone P, Craxi A, Cottone M. Transarterial chemoembolization for unresectable hepatocellular carcinoma: meta-analysis of randomized controlled trials. *Radiology* 2002; **224**: 47-54 [PMID: [12091661](#) DOI: [10.1148/radiol.2241011262](#)]
- 38 **Facciorusso A**, Bellanti F, Villani R, Salvatore V, Muscatello N, Piscaglia F, Vendemiale G, Serviddio G. Transarterial chemoembolization vs bland embolization in hepatocellular carcinoma: A meta-analysis of randomized trials. *United European Gastroenterol J* 2017; **5**: 511-518 [PMID: [28588882](#) DOI: [10.1177/2050640616673516](#)]
- 39 **Bruix J**, Reig M, Sherman M. Evidence-Based Diagnosis, Staging, and Treatment of Patients With Hepatocellular Carcinoma. *Gastroenterology* 2016; **150**: 835-853 [PMID: [26795574](#) DOI: [10.1053/j.gastro.2015.12.041](#)]
- 40 **Hickey RM**, Lewandowski RJ, Salem R. Yttrium-90 Radioembolization for Hepatocellular Carcinoma. *Semin Nucl Med* 2016; **46**: 105-108 [PMID: [26897714](#) DOI: [10.1053/j.semnuclmed.2015.10.011](#)]
- 41 **Iñarrairaegui M**, Thurston KG, Bilbao JI, D'Avola D, Rodriguez M, Arbizu J, Martinez-Cuesta A, Sangro B. Radioembolization with use of yttrium-90 resin microspheres in patients with hepatocellular carcinoma and portal vein thrombosis. *J Vasc Interv Radiol* 2010; **21**: 1205-1212 [PMID: [20598574](#) DOI: [10.1016/j.jvir.2010.04.012](#)]
- 42 **Lau WY**, Sangro B, Chen PJ, Cheng SQ, Chow P, Lee RC, Leung T, Han KH, Poon RT. Treatment for hepatocellular carcinoma with portal vein tumor thrombosis: the emerging role for radioembolization using yttrium-90. *Oncology* 2013; **84**: 311-318 [PMID: [23615394](#) DOI: [10.1159/000348325](#)]
- 43 **Kim KW**, Lee JM, Choi BI. Assessment of the treatment response of HCC. *Abdom Imaging* 2011; **36**: 300-314 [PMID: [21279353](#) DOI: [10.1007/s00261-011-9683-3](#)]
- 44 **Crocetti L**, Della Pina C, Cioni D, Lencioni R. Peri-intraprocedural imaging: US, CT, and MRI. *Abdom Imaging* 2011; **36**: 648-660 [PMID: [21584636](#) DOI: [10.1007/s00261-011-9750-9](#)]
- 45 **Narsinh KH**, Duncan DP, Newton IG, Minocha J, Rose SC. Liver-directed therapy for hepatocellular carcinoma. *Abdom Radiol (NY)* 2018; **43**: 203-217 [PMID: [29230556](#) DOI: [10.1007/s00261-017-1435-6](#)]
- 46 **Tian G**, Yang S, Yuan J, Threapleton D, Zhao Q, Chen F, Cao H, Jiang T, Li L. Comparative efficacy of treatment strategies for hepatocellular carcinoma: systematic review and network meta-analysis. *BMJ Open* 2018; **8**: e021269 [PMID: [30341113](#) DOI: [10.1136/bmjopen-2017-021269](#)]
- 47 **Portolani N**, Tiberio GA, Ronconi M, Coniglio A, Ghidoni S, Gaverini G, Giulini SM. Aggressive recurrence after radiofrequency ablation of liver neoplasms. *Hepatogastroenterology* 2003; **50**: 2179-2184 [PMID: [14696492](#)]
- 48 **Tajima H**, Ohta T, Okamoto K, Nakanuma S, Hayashi H, Nakagawara H, Onishi I, Takamura H, Kitagawa H, Fushida S, Tani T, Fujimura T, Kayahara M, Arai K, Yamashita T, Kaneko S, Zen Y. Radiofrequency ablation induces dedifferentiation of hepatocellular carcinoma. *Oncol Lett* 2010; **1**: 91-94 [PMID: [22966262](#) DOI: [10.3892/ol.00000016](#)]
- 49 **Kang TW**, Lim HK, Cha DI. Aggressive tumor recurrence after radiofrequency ablation for hepatocellular carcinoma. *Clin Mol Hepatol* 2017; **23**: 95-101 [PMID: [28349677](#) DOI: [10.3350/cmh.2017.0006](#)]
- 50 **Ibrahim SM**, Nikolaidis P, Miller FH, Lewandowski RJ, Ryu RK, Sato KT, Senthilnathan S, Riaz A, Kulik L, Mulcahy MF, Omary RA, Salem R. Radiologic findings following Y90 radioembolization for primary liver malignancies. *Abdom Imaging* 2009; **34**: 566-581 [PMID: [18777189](#) DOI: [10.1007/s00261-008-9454-y](#)]
- 51 **Mendiratta-lala M**, William M, Shampain K, Zhang A, Jo A, Moorman S, Aslam A, Mature K, Davenport M. MRI assessment of hepatocellular carcinoma after local-regional therapy: a comprehensive review. *Radiology: Imaging Cancer* 2020; **2** [DOI: [10.1148/rycan.2020190024](#)]
- 52 **Hass P**, Mohnike K. Extending the Frontiers Beyond Thermal Ablation by Radiofrequency Ablation: SBRT, Brachytherapy, SIRT (Radioembolization). *Viszeralmedizin* 2014; **30**: 245-252 [PMID: [26288597](#) DOI: [10.1159/000366088](#)]
- 53 **Mendiratta-Lala M**, Masch W, Owen D, Aslam A, Maurino C, Devasia T, Schipper MJ, Parikh ND, Cuneo K, Lawrence TS, Davenport MS. Natural history of hepatocellular carcinoma after stereotactic body radiation therapy. *Abdom Radiol (NY)* 2020 [PMID: [32303772](#) DOI: [10.1007/s00261-020-02532-4](#)]
- 54 **American College of Radiology**. Liver Imaging Reporting and Data Systems Version 2018 manual. 2018. Available from: <https://www.acr.org/Clinical-Resources/Reporting-and-Data-Systems/LI-RADS/CT-MRI-LI-RADS-v2018>
- 55 **Voizard N**, Cerny M, Assad A, Billiard JS, Olivié D, Perreault P, Kielar A, Do RKG, Yokoo T, Sirlin CB, Tang A. Assessment of hepatocellular carcinoma treatment response with LI-RADS: a pictorial review. *Insights Imaging* 2019; **10**: 121 [PMID: [31853668](#) DOI: [10.1186/s13244-019-0801-z](#)]
- 56 **Keppke AL**, Salem R, Reddy D, Huang J, Jin J, Larson AC, Miller FH. Imaging of hepatocellular carcinoma

- after treatment with yttrium-90 microspheres. *AJR Am J Roentgenol* 2007; **188**: 768-775 [PMID: [17312067](#) DOI: [10.2214/AJR.06.0706](#)]
- 57 **Kubota K**, Ina H, Okada Y, Irie T. Growth rate of primary single hepatocellular carcinoma: determining optimal screening interval with contrast enhanced computed tomography. *Dig Dis Sci* 2003; **48**: 581-586 [PMID: [12757173](#) DOI: [10.1023/a:1022505203786](#)]
- 58 **An C**, Choi YA, Choi D, Paik YH, Ahn SH, Kim MJ, Paik SW, Han KH, Park MS. Growth rate of early-stage hepatocellular carcinoma in patients with chronic liver disease. *Clin Mol Hepatol* 2015; **21**: 279-286 [PMID: [26523271](#) DOI: [10.3350/cmh.2015.21.3.279](#)]
- 59 **Cools KS**, Moon AM, Burke LMB, McGinty KA, Strassle PD, Gerber DA. Validation of the Liver Imaging Reporting and Data System Treatment Response Criteria After Thermal Ablation for Hepatocellular Carcinoma. *Liver Transpl* 2020; **26**: 203-214 [PMID: [31677319](#) DOI: [10.1002/lt.25673](#)]
- 60 **Chaudhry M**, McGinty KA, Mervak B, Lerebours R, Li C, Shropshire E, Ronald J, Commander L, Hertel J, Luo S, Bashir MR, Burke LMB. The LI-RADS Version 2018 MRI Treatment Response Algorithm: Evaluation of Ablated Hepatocellular Carcinoma. *Radiology* 2020; **294**: 320-326 [PMID: [31845843](#) DOI: [10.1148/radiol.2019191581](#)]
- 61 **Seo N**, Kim MS, Park MS, Choi JY, Do RKG, Han K, Kim MJ. Evaluation of treatment response in hepatocellular carcinoma in the explanted liver with Liver Imaging Reporting and Data System version 2017. *Eur Radiol* 2020; **30**: 261-271 [PMID: [31418085](#) DOI: [10.1007/s00330-019-06376-5](#)]
- 62 **Shropshire EL**, Chaudhry M, Miller CM, Allen BC, Bozdogan E, Cardona DM, King LY, Janas GL, Do RK, Kim CY, Ronald J, Bashir MR. LI-RADS Treatment Response Algorithm: Performance and Diagnostic Accuracy. *Radiology* 2019; **292**: 226-234 [PMID: [31038409](#) DOI: [10.1148/radiol.2019182135](#)]
- 63 **Agopian VG**, Morshedi MM, McWilliams J, Harlander-Locke MP, Markovic D, Zarrinpar A, Kaldas FM, Farmer DG, Yersiz H, Hiatt JR, Busuttil RW. Complete pathologic response to pretransplant locoregional therapy for hepatocellular carcinoma defines cancer cure after liver transplantation: analysis of 501 consecutively treated patients. *Ann Surg* 2015; **262**: 536-45; discussion 543-5 [PMID: [26258323](#) DOI: [10.1097/SLA.0000000000001384](#)]
- 64 **Mendiratta-Lala M**, Gu E, Owen D, Cuneo KC, Bazzi L, Lawrence TS, Hussain HK, Davenport MS. Imaging Findings Within the First 12 Months of Hepatocellular Carcinoma Treated With Stereotactic Body Radiation Therapy. *Int J Radiat Oncol Biol Phys* 2018; **102**: 1063-1069 [PMID: [29029891](#) DOI: [10.1016/j.ijrobp.2017.08.022](#)]
- 65 **Moore A**, Cohen-Naftaly M, Tobar A, Kundel Y, Benjaminov O, Braun M, Issachar A, Mor E, Sarfaty M, Bragilovski D, Hur RB, Gordon N, Stemmer SM, Allen AM. Stereotactic body radiation therapy (SBRT) for definitive treatment and as a bridge to liver transplantation in early stage inoperable Hepatocellular carcinoma. *Radiat Oncol* 2017; **12**: 163 [PMID: [29052532](#) DOI: [10.1186/s13014-017-0899-4](#)]
- 66 **Riaz A**, Kulik L, Lewandowski RJ, Ryu RK, Giakoumis Spear G, Mulcahy MF, Abecassis M, Baker T, Gates V, Nayar R, Miller FH, Sato KT, Omary RA, Salem R. Radiologic-pathologic correlation of hepatocellular carcinoma treated with internal radiation using yttrium-90 microspheres. *Hepatology* 2009; **49**: 1185-1193 [PMID: [19133645](#) DOI: [10.1002/hep.22747](#)]



Published by **Baishideng Publishing Group Inc**
7041 Koll Center Parkway, Suite 160, Pleasanton, CA 94566, USA

Telephone: +1-925-3991568

E-mail: bpgoffice@wjgnet.com

Help Desk: <https://www.f6publishing.com/helpdesk>

<https://www.wjgnet.com>

