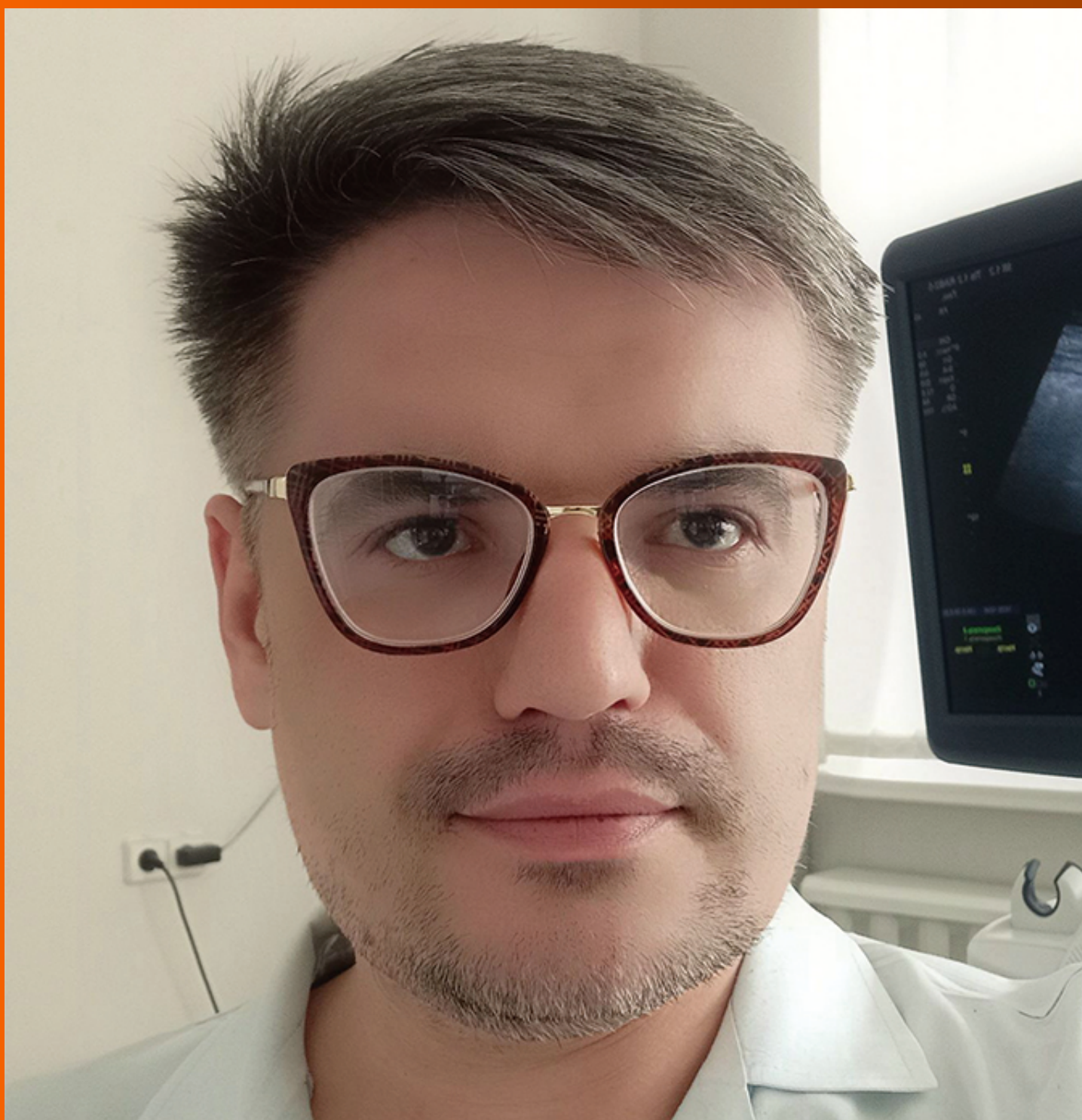


# World Journal of *Hepatology*

*World J Hepatol* 2022 March 27; 14(3): 482-646



**REVIEW**

- 482 Hepatitis E in immunocompromised individuals  
*Damiris K, Aghaie Meybodi M, Niazi M, Pyrsopoulos N*

**MINIREVIEWS**

- 495 Small duct primary sclerosing cholangitis: A discrete variant or a bridge to large duct disease, a practical review  
*Nguyen CM, Kline KT, Stevenson HL, Khan K, Parupudi S*
- 504 New progress in understanding roles of nitric oxide during hepatic ischemia-reperfusion injury  
*Zhang YP, Liu XR, Yang MW, Yang SL, Hong FF*
- 516 Renal manifestations of hepatitis E among immunocompetent and solid organ transplant recipients  
*Kovvuru K, Carbajal N, Pakanati AR, Thongprayoon C, Hansrivijit P, Boonpheng B, Pattharanitima P, Nissaisorakarn V, Cheungpasitporn W, Kanduri SR*
- 525 Safety of direct acting antiviral treatment for hepatitis C in oncologic setting: A clinical experience and a literature review  
*Spera AM*

**ORIGINAL ARTICLE**

**Basic Study**

- 535 Fetic acid amends bisphenol A-induced toxicity, DNA breakdown, and histopathological changes in the liver, kidney, and testis  
*Korier KMM*

**Case Control Study**

- 551 Prevalence of hypothyroidism and effect of thyroid hormone replacement therapy in patients with non-alcoholic fatty liver disease: A population-based study  
*Almomani A, Hitawala AA, Kumar P, Alqaisi S, Alshaikh D, Alkhayyat M, Asaad I*

**Retrospective Cohort Study**

- 559 Standards of liver cirrhosis care in Central Australia  
*Raja SS, Batey RG, Edwards S, Aung HH*
- 570 Risk factors and prediction of acute kidney injury after liver transplantation: Logistic regression and artificial neural network approaches  
*Bredt LC, Peres LAB, Risso M, Barros LCAL*

**Retrospective Study**

- 583 Pediatric liver transplantation outcomes from a single center in Thailand

*Prachuapthunyachart S, Sintusek P, Tubjareon C, Chaijitraruch N, Sanpavat A, Phewplung T, Wanawongsawad P, Intrarakamhang AL, Chongsrisawat V*

**Observational Study**

- 592 Predictors of mortality at 28-days in infection associated acute kidney injury in cirrhosis

*Gupta T, Ranga N, Goyal SK*

- 602 Benign course of residual inflammation at end of treatment of liver transplant recipients after sofosbuvir based therapy

*Ismail B, Benrajab KM, Bejarano P, Ruiz P, Sears D, Tzakis A, Zervos XB*

- 612 Interrelationship between physical activity and depression in nonalcoholic fatty liver disease

*Weinstein AA, De Avila L, Kannan S, Paik JM, Golabi P, Gerber LH, Younossi ZM*

- 623 Assessment of fibroblast growth factor 19 as a non-invasive serum marker for hepatocellular carcinoma

*Mohamed GA, Nashaat EH, Fawzy HM, ElGhandour AM*

**Randomized Clinical Trial**

- 634 Effect of a specific *Escherichia coli* Nissle 1917 strain on minimal/mild hepatic encephalopathy treatment

*Manzhalii E, Moyseyenko V, Kondratiuk V, Molochech N, Falalyeyeva T, Kobyliak N*

**ABOUT COVER**

Editorial Board Member of *World Journal of Hepatology*, Rostyslav Bubnov, MD, PhD, LLB, Senior researcher in The Interferon Department of Zabolotny Institute of Microbiology and Virology, National Academy of Sciences of Ukraine; Medical doctor in The Center of Ultrasound Diagnostics and Interventional Sonography, Clinical Hospital "Pheophania" of Administration of President of Ukraine, Kyiv 03157, Ukraine. rostbubnov@gmail.com

**AIMS AND SCOPE**

The primary aim of *World Journal of Hepatology* (*WJH*, *World J Hepatol*) is to provide scholars and readers from various fields of hepatology with a platform to publish high-quality basic and clinical research articles and communicate their research findings online.

*WJH* mainly publishes articles reporting research results and findings obtained in the field of hepatology and covering a wide range of topics including chronic cholestatic liver diseases, cirrhosis and its complications, clinical alcoholic liver disease, drug induced liver disease autoimmune, fatty liver disease, genetic and pediatric liver diseases, hepatocellular carcinoma, hepatic stellate cells and fibrosis, liver immunology, liver regeneration, hepatic surgery, liver transplantation, biliary tract pathophysiology, non-invasive markers of liver fibrosis, viral hepatitis.

**INDEXING/ABSTRACTING**

The *WJH* is now abstracted and indexed in PubMed, PubMed Central, Emerging Sources Citation Index (Web of Science), Scopus, Reference Citation Analysis, China National Knowledge Infrastructure, China Science and Technology Journal Database, and Superstar Journals Database. The 2021 edition of Journal Citation Reports® cites the 2020 Journal Citation Indicator (JCI) for *WJH* as 0.61. The *WJH*'s CiteScore for 2020 is 5.6 and Scopus CiteScore rank 2020: Hepatology is 24/62.

**RESPONSIBLE EDITORS FOR THIS ISSUE**

Production Editor: Rui-Rui Wu, Production Department Director: Xiang Li, Editorial Office Director: Xiang Li.

**NAME OF JOURNAL**

*World Journal of Hepatology*

**ISSN**

ISSN 1948-5182 (online)

**LAUNCH DATE**

October 31, 2009

**FREQUENCY**

Monthly

**EDITORS-IN-CHIEF**

Nikolaos Pyrsopoulos, Ke-Qin Hu, Koo Jeong Kang

**EDITORIAL BOARD MEMBERS**

<https://www.wjnet.com/1948-5182/editorialboard.htm>

**PUBLICATION DATE**

March 27, 2022

**COPYRIGHT**

© 2022 Baishideng Publishing Group Inc

**INSTRUCTIONS TO AUTHORS**

<https://www.wjnet.com/bpg/gerinfo/204>

**GUIDELINES FOR ETHICS DOCUMENTS**

<https://www.wjnet.com/bpg/GerInfo/287>

**GUIDELINES FOR NON-NATIVE SPEAKERS OF ENGLISH**

<https://www.wjnet.com/bpg/gerinfo/240>

**PUBLICATION ETHICS**

<https://www.wjnet.com/bpg/GerInfo/288>

**PUBLICATION MISCONDUCT**

<https://www.wjnet.com/bpg/gerinfo/208>

**ARTICLE PROCESSING CHARGE**

<https://www.wjnet.com/bpg/gerinfo/242>

**STEPS FOR SUBMITTING MANUSCRIPTS**

<https://www.wjnet.com/bpg/GerInfo/239>

**ONLINE SUBMISSION**

<https://www.f6publishing.com>



Case Control Study

# Prevalence of hypothyroidism and effect of thyroid hormone replacement therapy in patients with non-alcoholic fatty liver disease: A population-based study

Ashraf Almomani, Asif Ali Hitawala, Prabhat Kumar, Sura Alqaisi, Dana Alshaikh, Motasem Alkhayyat, Imad Asaad

**Specialty type:** Gastroenterology and hepatology

**Provenance and peer review:** Unsolicited article; Externally peer reviewed.

**Peer-review model:** Single blind

**Peer-review report's scientific quality classification**

Grade A (Excellent): 0  
Grade B (Very good): B  
Grade C (Good): C  
Grade D (Fair): D  
Grade E (Poor): 0

**P-Reviewer:** Li H, China; Pham TTT, Viet Nam

**Received:** August 16, 2021

**Peer-review started:** August 16, 2021

**First decision:** November 11, 2021

**Revised:** November 13, 2021

**Accepted:** February 24, 2022

**Article in press:** February 24, 2022

**Published online:** March 27, 2022



**Ashraf Almomani, Prabhat Kumar, Sura Alqaisi, Motasem Alkhayyat,** Department of Internal Medicine, Cleveland Clinic Foundation, Cleveland, OH 44111, United States

**Asif Ali Hitawala,** Liver Disease Branch, National Institute of Diabetes and Digestive and Kidney Diseases/National Institutes of Health, Bethesda, MD 20892, United States

**Dana Alshaikh,** Mutah University, Amman 00962, Jordan

**Imad Asaad,** Department of Digestive Disease and Surgery Institute, Cleveland Clinic Foundation, Cleveland, OH 44195, United States

**Corresponding author:** Imad Asaad, MD, Staff Physician, Department of Digestive Disease and Surgery Institute, Cleveland Clinic Foundation, 9500 Euclid Ave, Cleveland, OH 44195, United States. [asaadi@ccf.org](mailto:asaadi@ccf.org)

## Abstract

### BACKGROUND

Non-alcoholic fatty liver disease (NAFLD) is currently considered as the most common cause of chronic liver disease worldwide. Risk factors for NAFLD have been well-described, including obesity, type 2 diabetes mellitus (T2DM), dyslipidemia (DLP) and metabolic syndrome. Hypothyroidism has been identified as an independent risk factor for the development of NAFLD, although the literature is inconsistent

### AIM

To evaluate the prevalence of hypothyroidism in patients with NAFLD, assess if it is an independent risk factor and explore the effect of thyroxine replacement therapy.

### METHODS

Our cohort's data was obtained using a validated, large, multicenter database (Explorys Inc, Cleveland, OH, United States) aggregated from pooled outpatient and inpatient records of 26 different healthcare systems, consisting of a total of 360 hospitals in the United States, and utilizing Systematized Nomenclature of Medicine-Clinical Terms for coding. We evaluated a cohort of patients with



hypothyroidism and NAFLD. Multivariate analysis was performed to adjust for confounding risk factors including hypertension (HTN), T2DM, DLP, obesity and metabolic syndrome. SPSS version 25, IBM Corp was used for statistical analysis, and for all analyses, a 2-sided *P* value of < 0.05 was considered statistically significant. Exclusion criteria were limited to age < 18 years.

## RESULTS

Among the 37648180 included individuals in this database who are above the age of 18 years, there were a total of 2320 patients with NAFLD (6.16 per 100000) in the last five years (2015-2020), amongst which 520 patients (22.4%) had hypothyroidism. Baseline characteristics of patients in this database are described in Table 1. Patients with NAFLD were also more likely to have obesity, T2DM, DLP, HTN, and metabolic syndrome (Table 2). While males and females were equally affected, patients in the age group 18-65 years as well as Caucasians seem to be at a higher risk. There was an increased risk of NAFLD among patients with hypothyroidism (OR = 1.587). Furthermore, thyroid hormone replacement was not associated with a decreased risk for developing NAFLD (OR = 1.106, C = 0.952-1.285, *P* = 0.303).

## CONCLUSION

Hypothyroidism seems to be an independent risk factor for the development of NAFLD. Thyroid hormone replacement did not provide a statistically significant risk reduction. Further studies are needed to evaluate the effect of thyroid hormone replacement and assess if being euthyroid while on thyroid replacement therapy affects development and/or progression of NAFLD.

**Key Words:** Hypothyroidism; Non-alcoholic fatty liver disease; Thyroid hormone replacement therapy; Independent risk factor

©The Author(s) 2022. Published by Baishideng Publishing Group Inc. All rights reserved.

**Core Tip:** One of the largest population-based case-control studies screening more than 37 million patients to study the inconsistent relationship between hypothyroidism and non-alcoholic fatty liver disease (NAFLD), and -to the best of our knowledge- the first paper investigating the theoretical role of thyroid hormone replacement in preventing NAFLD among hypothyroidism patients.

**Citation:** Almomani A, Hitawala AA, Kumar P, Alqaisi S, Alshaikh D, Alkhayat M, Asaad I. Prevalence of hypothyroidism and effect of thyroid hormone replacement therapy in patients with non-alcoholic fatty liver disease: A population-based study. *World J Hepatol* 2022; 14(3): 551-558

**URL:** <https://www.wjgnet.com/1948-5182/full/v14/i3/551.htm>

**DOI:** <https://dx.doi.org/10.4254/wjh.v14.i3.551>

## INTRODUCTION

Non-alcoholic fatty liver disease (NAFLD) is currently considered as the most common cause of chronic liver disease worldwide and the second most common indication for liver transplantation in the United States after chronic hepatitis C with a histological disease spectrum ranging from steatosis to non-alcoholic steatohepatitis (NASH) and eventually cirrhosis. Its international prevalence is steadily increasing (15% in 2005 to 25% in 2010), and it is expected to emerge as the leading cause of end-stage liver disease in the near future[1]. Several genetic and environmental risk factors for NAFLD have been described in the literature, including obesity, unhealthy eating habits, low physical activity levels, type 2 diabetes mellitus (T2DM), dyslipidemia (DLP), hypertension (HTN) and metabolic syndrome[1-3].

Thyroid hormone plays a major role in regulating the metabolism of lipids and carbohydrates which are affected in patients with NAFLD. Furthermore, hypothyroidism in particular shares similar risk factors to those of NAFLD including insulin resistance, DLP, obesity and metabolic syndrome[4,5]. Liangpunsakul *et al*[4] was the first to describe the potential relationship between hypothyroidism and NAFLD, and found a significantly higher hypothyroidism prevalence among patients with NAFLD. This association was further replicated in later retrospective studies[5]. However, these studies were limited by the smaller sample size and the inconsistency of the literature to some degree. Our aim is to conduct a population-based study to estimate the prevalence of hypothyroidism in patients with NAFLD, and statistically adjust for all known confounders to assess whether hypothyroidism is an independent risk factor for NAFLD, and to further assess the effect of thyroid hormone replacement therapy.

## MATERIALS AND METHODS

### Database

Our cohort's data was obtained using a validated, multicentered and daily-updated database (Explorys Inc, Cleveland, OH, United States) developed by IBM Corporation, Watson Health[6]. Explorys consists of electronic health records of 26 different healthcare systems across the United States and a total of 360 hospitals with more than 50 million patients. Explorys utilizes Systematized Nomenclature of Medicine Clinical Terms (SNOMED-CT) for the definition of the diseases and pools large outpatient and inpatient daintified data that can be formulated into numerous cohorts according to the clinical element being studied. Explorys further allows for the identification of the timeline of events in reference to the index clinical event of interest, and hence the ability to study the temporal relationship between different variables. The Institutional Review Board approval is not required since Explorys is a Health Insurance Portability and Accountability Act-compliant platform.

### Methodology and patient selection

We retrospectively evaluated an initial cohort of patients with a SNOMED-CT of "Hypothyroidism" between the years 2015 to 2020. Our exclusion criteria were limited to patients less than 18 years old. Baseline characteristics of patients with hypothyroidism are shown in Table 1. A second cohort of patients with a SNOMED-CT of "Non-Alcoholic Fatty Liver" was identified. Age, gender and race-based data were collected. Potential confounders that were analyzed included: hypothyroidism, HTN, T2DM, DLP, obesity and metabolic syndrome. Among those with hypothyroidism, whether the patient was on thyroxine replacement therapy was also analyzed.

### Statistical analysis

Demographics and related diseases were characterized by descriptive statistics. The overall prevalence of NAFLD was calculated by dividing the total number of individuals with NAFLD by the total number of individuals in the database (2015-2020), hence making sure that all patients in the denominator had an equal opportunity of being diagnosed with NAFLD. Multivariate analysis was performed to adjust for the confounders in the later cohort (Table 2). SPSS version 25, IBM Corp was used for statistical analysis, and for all analyses, a 2-sided *P* value of < 0.05 was considered statistically significant.

## RESULTS

Baseline characteristics of patients in this database are described in Table 1. Among the 37648180 included individuals in this database who are above the age of 18 years, there were a total of 2320 patients with NAFLD in the period from 2015 to 2020. The 5-year period prevalence rate of NAFLD was 6.16 per 100000. Amongst those with NAFLD, 520 patients (22.4%) had hypothyroidism. Patients with NAFLD were also more likely to have obesity (OR, 3.616, 95%CI: 3.318-3.940), type 2 diabetes mellitus (OR, 2.178, 95%CI: 1.994-2.379), dyslipidemia (OR, 2.346, 95%CI: 2.121-2.596), hypertension (OR, 1.326, 95%CI: 1.201-1.465), and metabolic syndrome (OR, 4.782, 95%CI: 4.782-5.460) (Table 2). Males (OR, 1.008, 95%CI: 0.934-1.088) and females were equally affected, but the results were statistically insignificant. Patients in the age group 18-65 years (OR, 1.658, 95%CI: 1.524-1.804) as well as Caucasians (OR, 1.63, 95%CI: 1.489-1.799) seem to be at a higher risk. There was an increased risk of NAFLD among patients with hypothyroidism (OR, 1.587, 95%CI: 1.388-1.815). Furthermore, thyroid hormone replacement was not associated with a decreased risk for developing NAFLD (OR, 1.106, 95%CI: 0.952-1.285, *P* = 0.303). Characteristics of patients with NAFLD and hypothyroidism are shown in Figure 1.

## DISCUSSION

### Discussion and review of literature

Over the last couple of decades, NAFLD has emerged as one of the most common causes of chronic liver disease, including cryptogenic cirrhosis across the globe[7-9]. Risk stratification for NAFLD has become a focus of research because of the close relationship with different metabolic syndromes like T2DM, DLP, obesity, polycystic ovarian syndrome, and thyroid disorders. Albeit the overlap of complex metabolic pathophysiology of NAFLD and thyroid function remains controversial, many studies have suggested a strong association between the two[10-12].

The underlying pathophysiological mechanism of NAFLD has not been well explained. Still, the most commonly accepted theory implicates insulin resistance as the central role in developing hepatic steatosis and perhaps steatohepatitis[13,14]. Thyroid hormone has a vital role in cell metabolism and energy hemostasis. Thyroid dysfunction is associated with many diseases, for instance, cardiovascular disease, obesity, dementia, fracture, and recently NAFLD[15]. Thyroid hormones impact various metabolic pathways, and evidence corroborates the association of thyroid dysfunction and the

**Table 1** Baseline characteristics of patients with hypothyroidism in explorys database

Parameter		Hypothyroidism	
		Present (%)	Absent (%)
Age (yr)	18-65	1335370 (48.3)	21097850 (60.5)
	> 65	1402550 (50.7)	6951210 (19.9)
Gender	Female	2087040 (75.5)	18562590 (53.2)
Race	Caucasian	2267940 (82.0)	20165960 (57.8)
	African-American	196720 (7.1)	4120940 (11.8)
	Asian	40710 (1.5)	539190 (1.5)
Comorbidities	HTN	1665090 (60.2)	7441760 (21.3)
	T2DM	790680 (28.6)	3114700 (8.9)
	Dyslipidemia	1716240 (62.1)	6469880 (18.5)
	Obesity	753060 (27.2)	3391060 (9.7)
	Metabolic syndrome	54440 (2.0)	2709750 (7.8)

HTN: Hypertension; T2DM: Type 2 diabetes mellites.

**Table 2** Multivariate analysis for risk factors in individuals with non-alcoholic fatty liver disease

Parameter	Odds ratio	95%CI	P value
Age (18-65)	1.658	1.524-1.804	< 0.0001
Male	1.008	0.934-1.088	0.841
Caucasian	1.636	1.489-1.799	< 0.0001
Obesity	3.616	3.318-3.940	< 0.0001
T2DM	2.178	1.994-2.379	< 0.0001
Dyslipidemia	2.346	2.121-2.596	< 0.0001
Hypertension	1.326	1.201-1.465	< 0.0001
Metabolic syndrome	4.782	4.782-5.460	< 0.0001
Hypothyroidism	1.587	1.388-1.815	< 0.0001
Hypothyroidism on Thyroxine replacement therapy	1.106	0.952-1.285	0.188

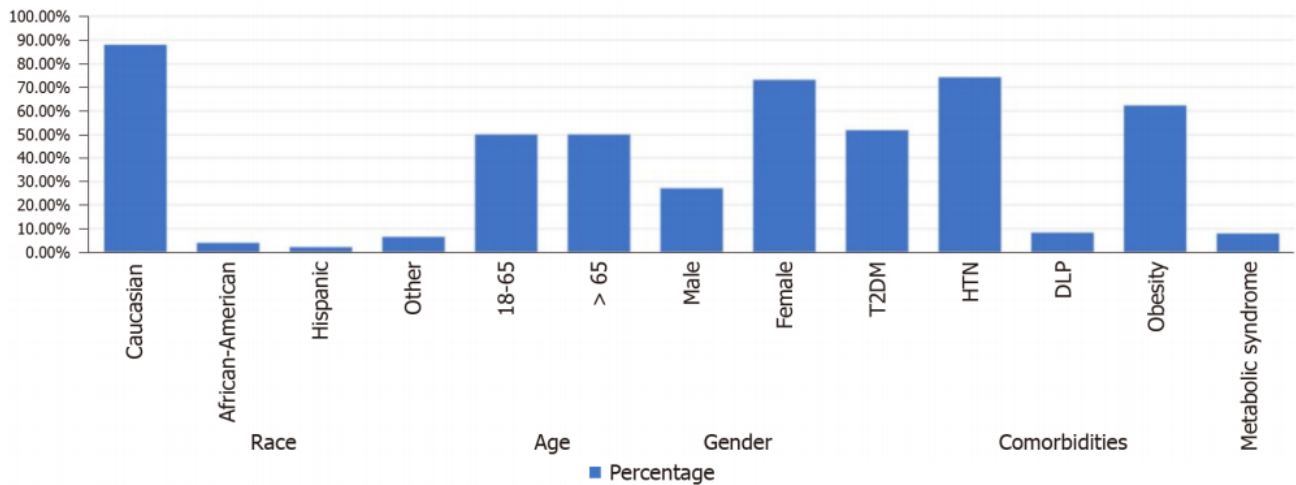
T2DM: Type 2 diabetes mellites.

pathogenesis of NAFLD. The two most telltale signs of the NAFLD disease spectrum are insulin resistance and hepatic lipid dysregulation[16]. Thyroid hormones (T3 and T4) use intracellular receptor signaling pathways in the liver to induce lipid metabolism. Even though molecular pathways leading to insulin resistance are complex and have not been completely elucidated, the association between thyroid dysfunction, both overt and subclinical hypothyroidism, and NAFLD has been extensively reported.

For example, a population-based study by Chung *et al*[12] showed that the prevalence of NAFLD and elevated liver enzymes were higher in a patient with hypothyroidism (OR: 1.38; 95%CI: 1.17-1.62) and confirmed a relevant dose-dependent clinal relationship between NAFLD and thyroid hormones. Moreover, thyroid hormones level has been shown to exert an effect in all the spectrum of steatosis. For instance, the exciting case-control comparative study by Pagadala *et al*[5] for the prevalence of hypothyroidism in NAFLD and NASH showed that hypothyroidism was more common in patients with NASH than patients with NAFLD (25% *vs* 12.8%, *P* = 0.03).

Another study from the western region of India by Parikh *et al*[17] reported a prevalence of 16.8% hypothyroidism in NAFLD patients with a strong clinically significant association amongst two diseases (OR, 14.94, 95%CI: 3.5-62.6). Authors also concluded that steatohepatitis was found to be more common in hypothyroid individuals as compared to controls (OR 3.9, 95%CI: 1.2-11.1). Ludwig *et al*[18] did a





DOI: 10.4254/wjh.v14.i3.551 Copyright The Author(s) 2022.

**Figure 1** Characteristics of patients with non-alcoholic fatty liver disease and hypothyroidism. HTN: Hypertension; T2DM: Type 2 diabetes mellitus; DLP: Dyslipidemia.

population-based cross-sectional study of 1276 participants which showed an increased prevalence of hepatic steatosis in subjects with reduced thyroid hormones ( $P = 0.0143$ ;  $P \leq 0.0001$ ).

Since hypothyroidism and NAFLD share numerous characteristics, including weight gain, whether hypothyroidism is a risk factor for NAFLD remains difficult to answer in retrospective studies (AA1). To provide stronger evidence of the causality relationship, Bano *et al*[19] conducted a prospective cohort study of 9419 patients followed over ten years and observed the effects of hypothyroidism in NAFLD patients, and found a 1.24-fold higher NAFLD risk (95%CI: 1.01-1.53) in patients with hypothyroidism. Another recent descriptive cross-sectional study by Martínez-Escudé *et al*[20] reported a significantly higher prevalence of NAFLD and liver fibrosis in subjects with TSH  $\geq 2.5$  ( $\mu\text{IU/mL}$ ). Also, in a comparative study of 1773 euthyroid participants, both TSH and levels Free T3 Level were found to be positively associated with the risk of NAFLD when diagnosed by ultrasound and fatty liver index, respectively[21]. Finally, a recent meta-analysis found that overall hypothyroidism has a positive association with the risk of NAFLD[22].

Along with these well-crafted studies, some substantial evidences have questioned the exact association between NAFLD and thyroid regulation. A recent Spanish study reported no association between hypothyroidism and NAFLD[23]. The authors observed that thyroid hormone level was not associated with a higher prevalence of NAFLD. Similarly, in a study by Lee *et al*[23], the authors found no relationship of increased incidence of NAFLD in patients with the subclinical or overt types of hypothyroidism.

Many of the studies describing the relationship between these two entities were largely limited by the sample size. To fill this gap, we conducted one of the largest nationwide multicenter studies which screened 37648180 individuals, among which 520 individuals had concomitant NAFLD and hypothyroidism. Our retrospective cohort study has shown that hypothyroidism is an independent risk factor for NAFLD, and that about 1 in every 5 patients with NAFLD have concomitant hypothyroidism (22.4%). Overall, this is one of the highest prevalence rates for NAFLD in hypothyroidism patients. Secondly, the effect of thyroid hormone replacement in hypothyroidism patients and its effect on NAFLD prevention has not been well explored. In a post hoc analysis of a randomized controlled trial for patients with subclinical hypothyroidism, the prevalence of NAFLD was reduced from 48.5% to 24.2% ( $P = 0.041$ ) after 15 mo of thyroid hormone replacement, whereas the prevalence of NAFLD remained stable in the untreated group[24], however; this trial was limited by the small sample size of ~360 patients (AA2). Moreover, those who received thyroid hormone replacement therapy had higher weight loss, which can itself explain the prevalence change in the treated population. Our study failed to show a statistically significant NAFLD risk reduction among patients with hypothyroidism who are placed on thyroid hormone replacement (OR, 1.106, 95%CI: 0.952-1.285,  $P = 0.303$ ) but the weight changes were difficult to assess. Without adequately powered prospective trials that also adjusts for weight changes, the question whether thyroid hormone replacement has a direct protective effect against NAFLD remains difficult to answer, and the appropriate duration for effective replacement therapy and the goals of treatment remain unclear (AA3).

### Limitations

One of the limitations in our study is that we could not analyze the diagnostic method used for assessing NAFLD and set cut-off values for diagnosing hypothyroidism, since these are SNOMED-CT coded diagnoses on identified patient's charts. We also could not specify the exact degree at which

hypothyroidism becomes a NAFLD risk factor (AA4). Also, we could not evaluate for how long have these patients with hypothyroidism been on thyroid hormone replacement therapy, and whether they have achieved the euthyroid state or not. More prospective trials are needed to answer this question.

## CONCLUSION

Hypothyroidism seems to be an independent risk factor for the development of NAFLD demonstrated in retrospective and prospective studies. Some studies have suggested that thyroid hormone replacement can potentially prevent or reverse NAFLD, which is potentially caused by weight loss. However, our study showed that thyroid hormone replacement did not provide a statistically significant risk reduction. Further prospective studies are needed to assess the role of thyroid hormone replacement therapy in patients with NAFLD, the duration for effective treatment and the treatment goals.

## ARTICLE HIGHLIGHTS

### **Research background**

Non-alcoholic fatty liver disease (NAFLD) is the most common cause of chronic liver disease worldwide, and hypothyroidism has been identified as an independent risk factor. The available data are limited by small sample size and the effect of thyroid hormone replacement therapy is not well studied.

### **Research motivation**

The main topics of this article is to give a focused analysis on the hypothyroidism and to assess whether it is an independent risk factor for the development of NAFLD by filling the small sample size gap in the literature, provide a review of the current medical literature in this field, and -most importantly- to evaluate the role of thyroid hormone replacement therapy in the prevention of the disease.

### **Research objectives**

The objective of this case control study is to assess whether hypothyroidism is an independent risk factor for the development of NAFLD, to review the updated medical literature, and to assess the role of thyroid hormone replacement therapy in the prevention of the disease.

### **Research methods**

We used a validated multicenter database (Explorys Inc.) from pooled outpatient and inpatient records of 26 different healthcare systems, consisting of a total of 360 hospitals in the United States to collect our data. We evaluated a cohort of patients with hypothyroidism and NAFLD. Multivariate analysis was performed to adjust for confounding risk factors including hypertension (HTN), type 2 diabetes mellitus (T2DM), dyslipidemia (DLP), obesity and metabolic syndrome. We evaluated a cohort of patients with hypothyroidism and NAFLD. Multivariate analysis was performed to adjust for confounding risk factors including HTN, T2DM, DLP, obesity and metabolic syndrome.

### **Research results**

Among 37648180 in the database who are above the age of 18 years, a total of 2320 patients with NAFLD in the period from 2015 to 2020 were included. NAFLD prevalence was 6.16 per 100000, among which 520 patients (22.4%) had hypothyroidism. Patients with NAFLD were also more likely to have obesity, type 2 diabetes mellitus, dyslipidemia, hypertension, and metabolic syndrome. Males and females were equally affected, but the results were statistically insignificant. Patients in the age group 18-65 years as well as Caucasians seem to be at a higher risk. There was an independent increase in the risk of NAFLD among patients with hypothyroidism, and thyroid hormone replacement was not associated with a decreased risk for developing NAFLD. Prospective studies are needed to better delineate the role of thyroid hormone replacement therapy in these individual.

### **Research conclusions**

There was an independent increase in the risk of NAFLD among patients with hypothyroidism, and thyroid hormone replacement is not associated with a decreased risk for developing NAFLD. Other studies have shown a potential protective effect of thyroid hormone replacement therapy. Based on the conflicting results with the existing literature, further studies are needed to better investigate the relationship between thyroid hormone replacement therapy and NAFLD.

### Research perspectives

Future research should focus on assessing the degree of hypothyroidism that leads to NAFLD, and the role of thyroid hormone replacement therapy including the duration of treatment and the end-point goals.

## FOOTNOTES

**Author contributions:** Almomani A and Kumar P wrote the manuscript; Hitawala AA designed the study; Alkhayyat M performed the statistical analysis; Alqaisi S, Alshaikh D collected the data; Asaad I is the corresponding author.

**Institutional review board statement:** No Institutional Review Board approval was required for this study since the database is de-identified.

**Conflict-of-interest statement:** No conflict of interest.

**Data sharing statement:** No additional data are available.

**Open-Access:** This article is an open-access article that was selected by an in-house editor and fully peer-reviewed by external reviewers. It is distributed in accordance with the Creative Commons Attribution NonCommercial (CC BY-NC 4.0) license, which permits others to distribute, remix, adapt, build upon this work non-commercially, and license their derivative works on different terms, provided the original work is properly cited and the use is non-commercial. See: <https://creativecommons.org/licenses/by-nc/4.0/>

**Country/Territory of origin:** United States

**ORCID number:** Ashraf Almomani 0000-0003-1648-0005; Asif Ali Hitawala 0000-0002-2888-0172; Prabhat Kumar 0000-0001-9768-4223; Sura Alqaisi 0000-0001-6548-8498; Dana Alshaikh 0000-0003-1471-0647; Motasem Alkhayyat 0000-0002-7603-8705; Imad Asaad 0000-0002-0648-6625.

**Corresponding Author's Membership in Professional Societies:** American College of Gastroenterology; American Association for the Study of Liver Diseases.

**S-Editor:** Zhang H

**L-Editor:** A

**P-Editor:** Zhang H

## REFERENCES

- 1 Younossi Z, Anstee QM, Marietti M, Hardy T, Henry L, Eslam M, George J, Bugianesi E. Global burden of NAFLD and NASH: trends, predictions, risk factors and prevention. *Nat Rev Gastroenterol Hepatol* 2018; **15**: 11-20 [PMID: 28930295 DOI: 10.1038/nrgastro.2017.109]
- 2 Leslie T, Pawloski L, Kallman-Price J, Escheik C, Hossain N, Fang Y, Gerber LH, Younossi ZM. Survey of health status, nutrition and geography of food selection of chronic liver disease patients. *Ann Hepatol* 2014; **13**: 533-540 [PMID: 25152986]
- 3 Gerber L, Otgonsuren M, Mishra A, Escheik C, Bircerdinc A, Stepanova M, Younossi ZM. Non-alcoholic fatty liver disease (NAFLD) is associated with low level of physical activity: a population-based study. *Aliment Pharmacol Ther* 2012; **36**: 772-781 [PMID: 22958053 DOI: 10.1111/apt.12038]
- 4 Liangpunsakul S, Chalasani N. Is hypothyroidism a risk factor for non-alcoholic steatohepatitis? *J Clin Gastroenterol* 2003; **37**: 340-343 [PMID: 14506393 DOI: 10.1097/00004836-200310000-00014]
- 5 Pagadala MR, Zein CO, Dasarthy S, Yeran LM, Lopez R, McCullough AJ. Prevalence of hypothyroidism in nonalcoholic fatty liver disease. *Dig Dis Sci* 2012; **57**: 528-534 [PMID: 22183820 DOI: 10.1007/s10620-011-2006-2]
- 6 IBM Corporation. The IBM Explorys Platform: liberate your healthcare data. [Cited 28 November 2020]. Available from: <https://www.ibm.com/downloads/cas/4P0QB9JN>
- 7 Caldwell SH, Crespo DM. The spectrum expanded: cryptogenic cirrhosis and the natural history of non-alcoholic fatty liver disease. *J Hepatol* 2004; **40**: 578-584 [PMID: 15030972 DOI: 10.1016/j.jhep.2004.02.013]
- 8 Angulo P. GI epidemiology: nonalcoholic fatty liver disease. *Aliment Pharmacol Ther* 2007; **25**: 883-889 [PMID: 17402991 DOI: 10.1111/j.1365-2036.2007.03246.x]
- 9 Browning JD, Szczepaniak LS, Dobbins R, Nuremberg P, Horton JD, Cohen JC, Grundy SM, Hobbs HH. Prevalence of hepatic steatosis in an urban population in the United States: impact of ethnicity. *Hepatology* 2004; **40**: 1387-1395 [PMID: 15565570 DOI: 10.1002/hep.20466]
- 10 He W, An X, Li L, Shao X, Li Q, Yao Q, Zhang JA. Relationship between Hypothyroidism and Non-Alcoholic Fatty Liver Disease: A Systematic Review and Meta-analysis. *Front Endocrinol (Lausanne)* 2017; **8**: 335 [PMID: 29238323 DOI: 10.3389/fendo.2017.00335]
- 11 Feisa SV, Chopei IV. Subclinical hypothyroidism in patients with non-alcoholic fatty liver disease at the background of

- carbohydrate metabolism disorders. *Wiad Lek* 2018; **71**: 261-264 [PMID: 29729151]
- 12 **Chung GE**, Kim D, Kim W, Yim JY, Park MJ, Kim YJ, Yoon JH, Lee HS. Non-alcoholic fatty liver disease across the spectrum of hypothyroidism. *J Hepatol* 2012; **57**: 150-156 [PMID: 22425701 DOI: 10.1016/j.jhep.2012.02.027]
- 13 **Anstee QM**, McPherson S, Day CP. How big a problem is non-alcoholic fatty liver disease? *BMJ* 2011; **343**: d3897 [PMID: 21768191 DOI: 10.1136/bmj.d3897]
- 14 **Marchesini G**, Babini M. Nonalcoholic fatty liver disease and the metabolic syndrome. *Minerva Cardioangiol* 2006; **54**: 229-239 [PMID: 16778754]
- 15 **Rieben C**, Segna D, da Costa BR, Collet TH, Chaker L, Aubert CE, Baumgartner C, Almeida OP, Hogervorst E, Trompet S, Masaki K, Mooijjaart SP, Gussekloo J, Peeters RP, Bauer DC, Aujesky D, Rodondi N. Subclinical Thyroid Dysfunction and the Risk of Cognitive Decline: a Meta-Analysis of Prospective Cohort Studies. *J Clin Endocrinol Metab* 2016; **101**: 4945-4954 [PMID: 27689250 DOI: 10.1210/jc.2016-2129]
- 16 **Dongiovanni P**, Valenti L, Rametta R, Daly AK, Nobili V, Mozzi E, Leathart JB, Pietrobattista A, Burt AD, Maggioni M, Fracanzani AL, Lattuada E, Zappa MA, Roviato G, Marchesini G, Day CP, Fargion S. Genetic variants regulating insulin receptor signalling are associated with the severity of liver damage in patients with non-alcoholic fatty liver disease. *Gut* 2010; **59**: 267-273 [PMID: 20176643 DOI: 10.1136/gut.2009.190801]
- 17 **Parikh P**, Phadke A, Sawant P. Prevalence of hypothyroidism in nonalcoholic fatty liver disease in patients attending a tertiary hospital in western India. *Indian J Gastroenterol* 2015; **34**: 169-173 [PMID: 25875369 DOI: 10.1007/s12664-015-0541-z]
- 18 **Ludwig U**, Holzner D, Denzer C, Greinert A, Haenle MM, Oetzuerk S, Koenig W, Boehm BO, Mason RA, Kratzer W, Graeter T; EMIL-Study. Subclinical and clinical hypothyroidism and non-alcoholic fatty liver disease: a cross-sectional study of a random population sample aged 18 to 65 years. *BMC Endocr Disord* 2015; **15**: 41 [PMID: 26276551 DOI: 10.1186/s12902-015-0030-5]
- 19 **Bano A**, Chaker L, Plompen EP, Hofman A, Dehghan A, Franco OH, Janssen HL, Darwish Murad S, Peeters RP. Thyroid Function and the Risk of Nonalcoholic Fatty Liver Disease: The Rotterdam Study. *J Clin Endocrinol Metab* 2016; **101**: 3204-3211 [PMID: 27270473 DOI: 10.1210/jc.2016-1300]
- 20 **Martínez-Escudé A**, Pera G, Costa-Garrido A, Rodríguez L, Arteaga I, Expósito-Martínez C, Torán-Monserrat P, Caballería L. TSH Levels as an Independent Risk Factor for NAFLD and Liver Fibrosis in the General Population. *J Clin Med* 2021; **10** [PMID: 34209831 DOI: 10.3390/jcm10132907]
- 21 **Liu Y**, Wang W, Yu X, Qi X. Thyroid Function and Risk of Non-Alcoholic Fatty Liver Disease in Euthyroid Subjects. *Ann Hepatol* 2018; **17**: 779-788 [PMID: 30145565 DOI: 10.5604/01.3001.0012.3136]
- 22 **Zeng X**, Li B, Zou Y. The relationship between non-alcoholic fatty liver disease and hypothyroidism: A systematic review and meta-analysis. *Medicine (Baltimore)* 2021; **100**: e25738 [PMID: 33907168 DOI: 10.1097/MD.00000000000025738]
- 23 **Lee KW**, Bang KB, Rhee EJ, Kwon HJ, Lee MY, Cho YK. Impact of hypothyroidism on the development of non-alcoholic fatty liver disease: A 4-year retrospective cohort study. *Clin Mol Hepatol* 2015; **21**: 372-378 [PMID: 26770926 DOI: 10.3350/cmh.2015.21.4.372]
- 24 **Liu L**, Yu Y, Zhao M, Zheng D, Zhang X, Guan Q, Xu C, Gao L, Zhao J, Zhang H. Benefits of Levothyroxine Replacement Therapy on Nonalcoholic Fatty Liver Disease in Subclinical Hypothyroidism Patients. *Int J Endocrinol* 2017; **2017**: 5753039 [PMID: 28473851 DOI: 10.1155/2017/5753039]



Published by **Baishideng Publishing Group Inc**  
7041 Koll Center Parkway, Suite 160, Pleasanton, CA 94566, USA

**Telephone:** +1-925-3991568

**E-mail:** [bpgoffice@wjgnet.com](mailto:bpgoffice@wjgnet.com)

**Help Desk:** <https://www.f6publishing.com/helpdesk>

<https://www.wjgnet.com>

