

World Journal of *Hepatology*

World J Hepatol 2022 April 27; 14(4): 647-865



FRONTIER

- 647 Revolution in the diagnosis and management of hepatitis C virus infection in current era
Hanif FM, Majid Z, Luck NH, Tasneem AA, Laeeq SM, Mubarak M

EVIDENCE REVIEW

- 670 Evidence-based approach to management of hepatic encephalopathy in adults
Hoilat GJ, Suhail FK, Adhami T, John S

MINIREVIEWS

- 682 Direct oral anticoagulant administration in cirrhotic patients with portal vein thrombosis: What is the evidence?
Biolato M, Paratore M, Di Galleonardo L, Marrone G, Grieco A
- 696 Noninvasive diagnosis of periportal fibrosis in schistosomiasis mansoni: A comprehensive review
Santos JC, Pereira CLD, Domingues ALC, Lopes EP
- 708 Review on hepatitis B virus precore/core promoter mutations and their correlation with genotypes and liver disease severity
Kumar R

ORIGINAL ARTICLE

Basic Study

- 719 Assessment of periportal fibrosis in *Schistosomiasis mansoni* patients by proton nuclear magnetic resonance-based metabonomics models
Rodrigues ML, da Luz TPSR, Pereira CLD, Batista AD, Domingues ALC, Silva RO, Lopes EP
- 729 Baicalin provides protection against fluoxetine-induced hepatotoxicity by modulation of oxidative stress and inflammation
Ganguly R, Kumar R, Pandey AK

Clinical and Translational Research

- 744 Correlation between Fibroscan and laboratory tests in non-alcoholic fatty liver disease/non-alcoholic steatohepatitis patients for assessing liver fibrosis
Al Danaf L, Hussein Kamareddine M, Fayad E, Hussain A, Farhat S

Retrospective Study

- 754 Testosterone therapy reduces hepatic steatosis in men with type 2 diabetes and low serum testosterone concentrations
Apostolov R, Gianatti E, Wong D, Kutaiba N, Gow P, Grossmann M, Sinclair M

- 766** Impact of liver cirrhosis on ST-elevation myocardial infarction related shock and interventional management, a nationwide analysis

Dar SH, Rahim M, Hosseini DK, Sarfraz K

Observational Study

- 778** Gravity assistance enables liver stiffness measurements to detect liver fibrosis under congestive circumstances

Suda T, Sugimoto A, Kanefuji T, Abe A, Yokoo T, Hoshi T, Abe S, Morita S, Yagi K, Takahashi M, Terai S

- 791** Total cholesterol to high-density lipoprotein ratio and nonalcoholic fatty liver disease in a population with chronic hepatitis B

Zhou YG, Tian N, Xie WN

- 802** Assessment of resting energy expenditure in patients with cirrhosis

Ferreira S, Marroni CA, Stein JT, Rayn R, Henz AC, Schmidt NP, Carteri RB, Fernandes SA

Prospective Study

- 812** Prognostic value of von-Willebrand factor in patients with liver cirrhosis and its relation to other prognostic indicators

Curakova Ristovska E, Genadieva-Dimitrova M

META-ANALYSIS

- 827** Effects and safety of natriuretic peptides as treatment of cirrhotic ascites: A systematic review and meta-analysis

Gantzel RH, Kjær MB, Jepsen P, Aagaard NK, Watson H, Gluud LL, Grønbaek H

CASE REPORT

- 846** Late polymicrobial transjugular intrahepatic portosystemic shunt infection in a liver transplant patient: A case report

Perez IC, Haskal ZJ, Hogan JJ, Argo CK

- 854** Angiotensin converting enzyme inhibitor associated spontaneous herniation of liver mimicking a pleural mass: A case report

Tebha SS, Zaidi ZA, Sethar S, Virk MAA, Yousaf MN

- 860** Not all liver tumors are alike — an accidentally discovered primary hepatic leiomyosarcoma: A case report

Garrido I, Andrade P, Pacheco J, Rios E, Macedo G

ABOUT COVER

Editorial Board Member of *World Journal of Hepatology*, Salvatore Sutti, MSc, PhD, Assistant Professor, Department of Health Sciences, University of East Piedmont, Novara 28100, Italy. salvatore.sutti@med.uniupo.it

AIMS AND SCOPE

The primary aim of *World Journal of Hepatology* (*WJH*, *World J Hepatol*) is to provide scholars and readers from various fields of hepatology with a platform to publish high-quality basic and clinical research articles and communicate their research findings online.

WJH mainly publishes articles reporting research results and findings obtained in the field of hepatology and covering a wide range of topics including chronic cholestatic liver diseases, cirrhosis and its complications, clinical alcoholic liver disease, drug induced liver disease autoimmune, fatty liver disease, genetic and pediatric liver diseases, hepatocellular carcinoma, hepatic stellate cells and fibrosis, liver immunology, liver regeneration, hepatic surgery, liver transplantation, biliary tract pathophysiology, non-invasive markers of liver fibrosis, viral hepatitis.

INDEXING/ABSTRACTING

The *WJH* is now abstracted and indexed in PubMed, PubMed Central, Emerging Sources Citation Index (Web of Science), Scopus, Reference Citation Analysis, China National Knowledge Infrastructure, China Science and Technology Journal Database, and Superstar Journals Database. The 2021 edition of Journal Citation Reports® cites the 2020 Journal Citation Indicator (JCI) for *WJH* as 0.61. The *WJH*'s CiteScore for 2020 is 5.6 and Scopus CiteScore rank 2020: Hepatology is 24/62.

RESPONSIBLE EDITORS FOR THIS ISSUE

Production Editor: Yi-Xuan Cai, Production Department Director: Xiang Li, Editorial Office Director: Xiang Li.

NAME OF JOURNAL

World Journal of Hepatology

ISSN

ISSN 1948-5182 (online)

LAUNCH DATE

October 31, 2009

FREQUENCY

Monthly

EDITORS-IN-CHIEF

Nikolaos Pyrsopoulos, Ke-Qin Hu, Koo Jeong Kang

EDITORIAL BOARD MEMBERS

<https://www.wjgnet.com/1948-5182/editorialboard.htm>

PUBLICATION DATE

April 27, 2022

COPYRIGHT

© 2022 Baishideng Publishing Group Inc

INSTRUCTIONS TO AUTHORS

<https://www.wjgnet.com/bpg/gerinfo/204>

GUIDELINES FOR ETHICS DOCUMENTS

<https://www.wjgnet.com/bpg/GerInfo/287>

GUIDELINES FOR NON-NATIVE SPEAKERS OF ENGLISH

<https://www.wjgnet.com/bpg/gerinfo/240>

PUBLICATION ETHICS

<https://www.wjgnet.com/bpg/GerInfo/288>

PUBLICATION MISCONDUCT

<https://www.wjgnet.com/bpg/gerinfo/208>

ARTICLE PROCESSING CHARGE

<https://www.wjgnet.com/bpg/gerinfo/242>

STEPS FOR SUBMITTING MANUSCRIPTS

<https://www.wjgnet.com/bpg/GerInfo/239>

ONLINE SUBMISSION

<https://www.f6publishing.com>



Prospective Study

Prognostic value of von-Willebrand factor in patients with liver cirrhosis and its relation to other prognostic indicators

Elena Curakova Ristovska, Magdalena Genadieva-Dimitrova

Specialty type: Gastroenterology and hepatology

Provenance and peer review: Unsolicited article; Externally peer reviewed.

Peer-review model: Single blind

Peer-review report's scientific quality classification

Grade A (Excellent): 0
Grade B (Very good): B
Grade C (Good): 0
Grade D (Fair): 0
Grade E (Poor): 0

P-Reviewer: de la Pinta C, Spain

Received: June 9, 2021

Peer-review started: June 9, 2021

First decision: July 6, 2021

Revised: July 18, 2021

Accepted: March 7, 2022

Article in press: March 7, 2022

Published online: April 27, 2022



Elena Curakova Ristovska, Intensive Care Unit, University Clinic for Gastroenterohepatology, Skopje 1000, North Macedonia

Elena Curakova Ristovska, Magdalena Genadieva-Dimitrova, Faculty of Medicine, Ss. Cyril and Methodius University in Skopje, Skopje 1000, North Macedonia

Magdalena Genadieva-Dimitrova, Hepatology Department, University Clinic for Gastroenterohepatology, Skopje 1000, North Macedonia

Corresponding author: Elena Curakova Ristovska, MD, PhD, Assistant Professor, Doctor, Faculty of Medicine, Ss. Cyril and Methodius University in Skopje, Mother Teresa 17, Skopje 1000, North Macedonia. elenacurakova@yahoo.com

Abstract

BACKGROUND

Von-Willebrand factor (vWF) disposes certain prognostic value in patients with liver cirrhosis, but its relation to other prognostic indicators has not been fully investigated.

AIM

To analyze the relation between vWF and other prognostic indicators in cirrhotic patients and to evaluate its prognostic value for mortality.

METHODS

This analytic prospective study was carried out in a tertiary center and initially enrolled 71 patients with liver cirrhosis and portal hypertension. It analyzed the relation between vWF and the stage of the disease and several inflammatory and prognostic indicators. The prospective analysis, performed on a sample of 63 patients, evaluated the association between the selected variables [vWF, Model for End-stage Liver Disease (MELD) score, C-reactive protein (CRP), ferritin, vitamin D, activated partial thromboplastin time, thrombin time, D-dimer concentration] and the survival time as well as their predictive value in terms of 3-mo, 6-mo and 1-year mortality.

RESULTS

vWF was significantly higher in patients with higher Child-Turcotte-Pugh class ($P = 0.0045$), MELD group ($P = 0.0057$), ferritin group ($P = 0.0278$), and D-dimer concentration ($P = 0.0232$). vWF significantly correlated with D-dimer concen-

tration, ferritin, CRP, International Normalized Ratio, and MELD, Child-Turcotte-Pugh, Sequential Organ Failure Assessment, and CLIF-consortium organ failure (CLIF-C OF) scores. vWF, MELD score, and CRP were significantly associated with death and were significant predictors of 3-mo, 6-mo, and 1-year mortality. Each vWF unit significantly increased the probability for 3-mo mortality by 1.005 times ($P = 0.008$), for 6-mo mortality by 1.006 times ($P = 0.005$), and for 1-year mortality by 1.007 times ($P = 0.002$). There was no significant difference between the diagnostic performance of vWF and MELD score and also between vWF and CRP regarding the 3-mo, 6-mo, and 1-year mortality.

CONCLUSION

In patients with liver cirrhosis, vWF is significantly related to other prognostic indicators and is a significant predictor of 3-mo, 6-mo, and 1-year mortality similar to MELD score and CRP.

Key Words: von-Willebrand factor; Cirrhosis; Mortality; C-reactive protein; D-dimer

©The Author(s) 2022. Published by Baishideng Publishing Group Inc. All rights reserved.

Core Tip: The prognostic value of von-Willebrand factor (vWF) in cirrhotic patients has been previously evaluated, but its relation to other inflammatory and prognostic indicators has not been fully investigated. The study confirmed that vWF was significantly associated with the stage of liver disease, D-dimer concentration, ferritin, and survival and that vWF was a significant predictor of 3-mo, 6-mo, and 1-year mortality similar to Model for End-stage Liver Disease score and C-reactive protein. These data reflect the important prognostic role of the complex and dynamic interaction between endothelial dysfunction, systemic inflammation, and cirrhosis-related coagulopathy in cirrhotic patients.

Citation: Curakova Ristovska E, Genadieva-Dimitrova M. Prognostic value of von-Willebrand factor in patients with liver cirrhosis and its relation to other prognostic indicators. *World J Hepatol* 2022; 14(4): 812-826

URL: <https://www.wjgnet.com/1948-5182/full/v14/i4/812.htm>

DOI: <https://dx.doi.org/10.4254/wjh.v14.i4.812>

INTRODUCTION

The high mortality rate in cirrhotic patients and the shortage of organs worldwide are constantly raising the issue of mortality prediction in patients with end-stage liver disease in terms of differentiating the most critically ill patients with the highest short-term mortality[1]. This leads to continuous and intense research towards defining new biological variables that possess certain prognostic potential in cirrhotic patients. Chronic liver disease is inevitably related to portal hypertension (PH), an entity that closely accompanies and often defines the natural course of the disease. Its prognostic significance derives from the fact that PH is closely related to several severe, life-threatening complications that are associated with high morbidity and mortality[2]. PH is diagnosed and quantified with the hepatic venous pressure gradient, but since it is an invasive, expensive, and not widely available procedure, there is a need for alternative relevant and noninvasive indicators of PH.

Recent research emphasizes the significant contributing role of endothelial dysfunction (ED) in the pathogenesis and progression of PH and its relation to poor prognosis in cirrhotic patients[3]. Intrahepatic ED is considered a major determinant of the increased hepatic vascular tone of the cirrhotic liver, and systemic ED due to endotoxemia is the cause of increased nitric oxide production, the major determinant of the hyperdynamic circulation [3]. Considering its important contributing role in the pathogenesis of PH, von-Willebrand factor (vWF) has recently gained some attention as a prognostic indicator in cirrhotic patients. The increased vWF production due to ED favors hypercoagulable state, formation of platelet-induced thromboses in the hepatic microcirculation, and gradual thrombotic vascular obliteration[4,5]. It is considered that the increased vWF concentration and the cirrhosis-related procoagulant imbalance are the two crucial predisposing events responsible for the progressive vascular occlusion of the portal circulation[4,5]. Also, ED is the major cause of many complex hemostatic abnormalities that occur in cirrhotic patients. The imbalance in the secretion of pro-coagulant, anticoagulant, fibrinolytic, and antifibrinolytic substances due to ED in different clinical settings may have a different hemostatic phenotype. On the other hand, short-term prognosis in cirrhotic patients largely depends on the accompanying liver-related events that temporarily worsen the liver function[6]. Recent data also emphasize the important contributing role of systemic inflammation (SI) in the pathogenesis of the majority of the acute events in cirrhotic patients. It has been established that SI is common and almost a persistent state, especially in advanced liver disease, that it has a crucial role in the course of

the disease, and that SI is related to adverse outcomes in cirrhotic patients[6-8].

It seems that ED, SI, and liver-related coagulopathy have an important role in the natural course of chronic liver disease[7,9-11]. The involvement of vWF as an indicator of ED plays a substantial role in the progression of PH, which explains the significant and relevant prognostic potential of vWF in cirrhotic patients. Still, the relation between vWF and other inflammatory and prognostic indicators has not been completely investigated. The aim of the study was to evaluate the relation between vWF and liver cirrhosis, its relation to other relevant prognostic indicators in cirrhotic patients, and the prognostic value of vWF in terms of 3-mo, 6-mo, and, 1-year mortality.

MATERIALS AND METHODS

Study design

This analytic monocentric prospective study initially enrolled 71 patients with liver cirrhosis and PH. Data regarding demographic and clinical characteristics of patients (age, gender, etiology, disease duration, data regarding previous complications, related diagnostic/therapeutic interventions) were collected, and a number of imaging and laboratory investigations were performed in order to determine the stage of the disease, to register the present complications of PH, and to assess the mortality risk. Besides the basic biochemical and hemostatic analyses, the concentration of vWF was also measured. Afterward, by using the American Society of Chest Physicians/Society of Critical Care Medicine (ACCP/SCCM) criteria, the presence of systemic inflammatory response syndrome (SIRS) was determined, and the Child-Turcotte-Pugh (CTP) score, Model for End-stage Liver Disease (MELD) score, Sequential Organ Failure Assessment (SOFA) score, CLIF-consortium organ failure (CLIF-C OF) scores, and Simplified Acute Physiology Score II (SAPS II) were calculated. After enrollment, patients were prospectively monitored for 1 year, and every 3 mo a regular control examination was performed. During every regular visit clinical examination (physical and abdomen examination), vital parameters measurement (blood pressure, heart rate, respiratory rate, blood oxygenation, body temperature), abdominal ultrasound examination with color Doppler of the portal vein, complete blood count, and biochemical analysis of blood sample and urine sediment was performed. In case of some clinical deterioration during the follow-up, an additional investigation was performed (patients were provided with phone communication with the study doctor), after which the patients went back to the regular study protocol. During the follow-up period, 8 patients dropped out (occurrence of some of the exclusion criteria, transplanted or noncompliant patients). Within the prospective analysis performed in 63 patients, the predictive value of vWF and several parameters of interest [MELD score, C-reactive protein (CRP), ferritin, vitamin D, activated partial thromboplastin time (aPTT), thrombin time (TT), D-dimer concentration] were analyzed in terms of 3-mo, 6-mo, and 1-year mortality. All patients signed an informed consent form for participation in the study. The research and the study protocol were in line with the ethical principles of the Helsinki declaration.

Patients

The study enrolled patients with clinically evident liver cirrhosis and portal hypertension with no significant preexisting comorbidities (systemic, infective, cardiovascular, metabolic, or neoplastic disease) and without active alcohol consumption, previous thrombotic event, blood transfusion, or interferon, antiplatelet, or anticoagulant therapy. Some patients were enrolled after hospitalization at the University Clinic for Gastroenterohepatology in Skopje, and some were enrolled during the outpatient follow-up.

Biochemical analysis, hemostatic analysis, and vWF assay

At enrollment and during every regular visit, a complete blood count and biochemical blood analysis [glucose, blood urea nitrogen, creatinine, bilirubin, protein profile (albumin, globulin), sodium, potassium, calcium, iron, total iron-binding capacity, lipid profile (cholesterol, high-density lipoprotein, low-density lipoprotein, triglycerides), CRP, ferritin, vitamin D, urinary sediment, alpha fetoprotein], hemostasis [prothrombin time (PT), International Normalized Ratio (INR), aPTT, TT], D-dimer concentration, urinary sediment, and gas analyses from capillary blood sample were performed. The vWF concentration was measured in platelet-rich plasma aliquoted after centrifugation of sodium citrate blood sample. The analysis was performed by using the immunoturbidimetric method (vWF Ag Test Kit, Siemens, Munich, Germany) on an automatic coagulometer (BCS XP System-Siemens Healthiness Global device). The normal range of vWF was 50%-150%. According to the obtained score values, patients were classified in three CTP classes (Class A, B and C), in three MELD groups [group 1 (MELD \leq 9), group 2 (MELD 10-19), and group 3 (MELD \geq 20)], in three serum ferritin (SF) groups [group 1 (SF $<$ 200 ng/mL), group 2 (SF 200-400 ng/mL), and group 3 (SF $>$ 400 ng/mL)], in two D-dimer groups (below/above 500 μ g/mL), and in two vitamin D groups (below/above 20 ng/mL).

Statistical analysis

The statistical analysis was performed by using the SPSS software package, version 22.0 for Windows (IBM Corp., Armonk, NY, United States). Descriptive statistics were provided as mean \pm standard deviation, median, and interquartile range (IQR). Mann Whitney *U* test and Kruskal-Wallis *H* test were used to test the significance of the difference between the numeric variables without normal distribution. Correlation between vWF and other variables was analyzed by Spearman's correlation. Univariate Cox proportional model was used in order to evaluate the association between the selected variables and the survival time, and the univariate logistic regression analysis was used to determine the significant predictors of mortality. The diagnostic performance of the significant mortality predictors was assessed by the receiver operating characteristic (ROC) analysis and the area under the curve (AUC) values of two independent ROC curves that were compared using the *Z* test. *P* values < 0.05 were considered statistically significant.

RESULTS

Patient characteristics and stage of disease

The mean age in the group was 58.8 ± 10.7 years [95% confidence interval (CI): 54.4-59.1], and there was a significant male predominance [56 (78.87%) men and 15 (21.13%) women; (gender ratio 3.73:1)]. Regarding etiology, alcoholic liver disease was the most prevalent entity (36 patients, 50%). According to the CTP classification, most patients were in class C (28, 39.40%), 25 patients (35.20%) in class B, and 18 patients (25.30%) in class A [CTP score 8.9 ± 2.9 (5-15); IQR = 9 (6-11)]. MELD score was 19.7 ± 9.9 (6-59); IQR = 18 (11-25). The CRP concentration was 21.1 ± 27.5 mg/L and SIRS was registered in 43 (60.60%) patients. The ferritin concentration was 290.45 ± 354.33 ng/mL [SF < 200 ng/mL in 39 (62.9%) patients, SF 200-400 ng/mL in 5 (8.1%), and SF > 400 ng/mL in 18 (29.0%) patients]. The vitamin D concentration was 17.65 ± 13.31 ng/mL, and the prevalence of vitamin D deficiency was 48.9% (Table 1).

vWF concentration and its relation to stage of disease and inflammatory and prognostic indicators

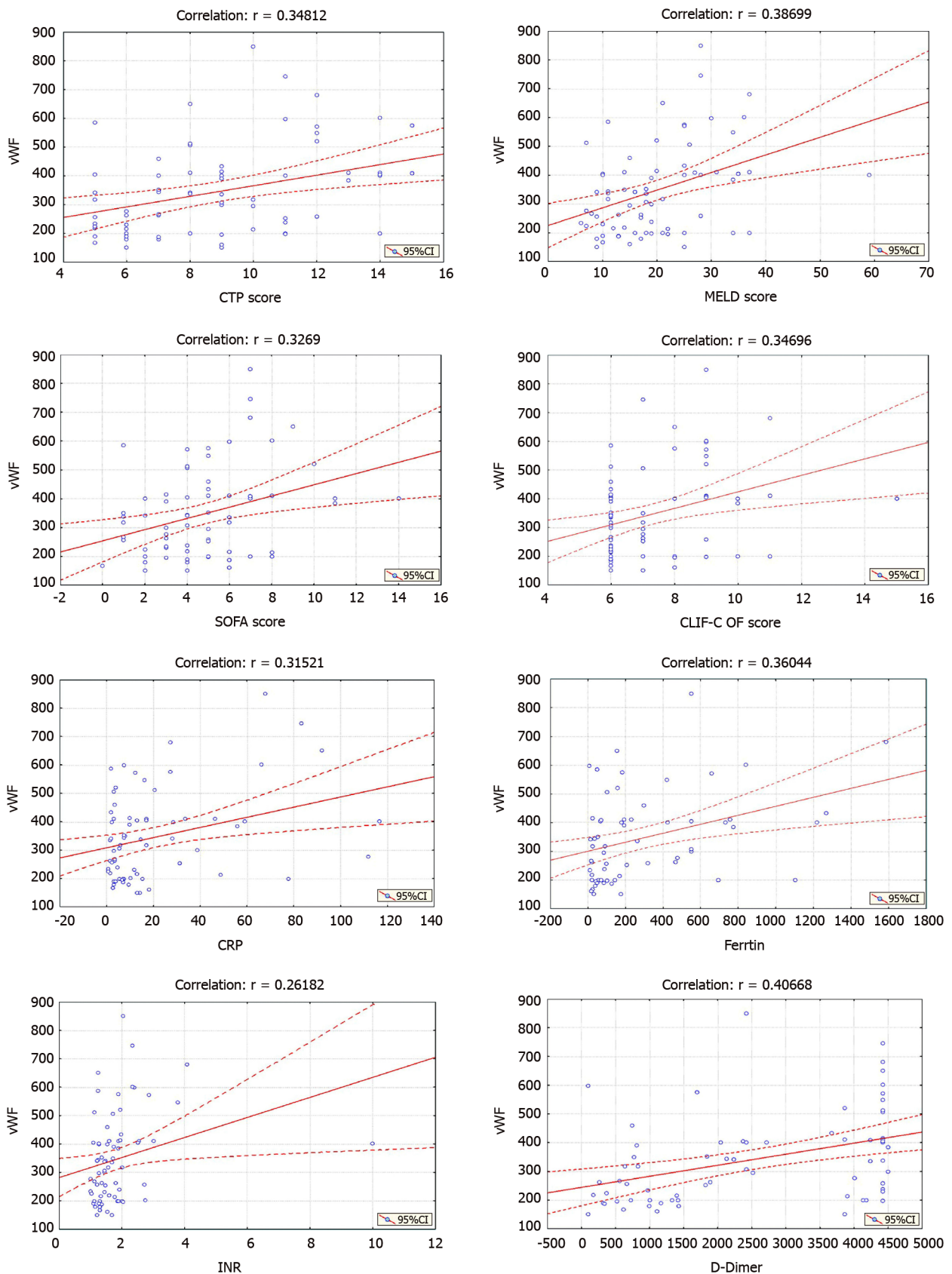
The mean vWF concentration in the group was $346.18 \pm 155.97\%$ (150-850), IQR = 318.40% (214.00-410.10) (Table 1). The analysis confirmed significantly higher vWF values in higher CTP class [Kruskal-Wallis *H* test: Chi-square (2) = 10.8177; *P* = 0.0045], MELD group [Kruskal-Wallis *H* test: Chi-square (2) = 10.3357; *P* = 0.0057], and SF group [Kruskal-Wallis *H* test: Chi-square (2) = 7.1653; *P* = 0.0278] and in patients with elevated (> 500 μ g/mL) D-dimer concentration (Mann-Whitney *U* test: *Z* = 2.6407; *P* = 0.0083) (Table 2). The analysis did not show a significant difference between the vWF values regarding vitamin D deficiency (Mann-Whitney *U* test: *Z* = -1.6916; *P* = 0.0907) and platelet count [(above/below 100×10^9 /L), (Mann-Whitney *U* test: *Z* = -0.02898; *P* = 0.9769)], (Table 2). The correlation analysis confirmed a strong significant positive linear correlation only between vWF and D-dimer concentration (*r* = 0.407) and a moderate significant positive linear correlation between vWF and CTP score, MELD score, SOFA score, CLIF-C OF score, CRP, ferritin, and INR (*r* = 0.348, 0.387, 0.327, 0.328, 0.315, 0.360 and 0.262, respectively) (Figure 1). The correlation between vWF and the other selected parameters (SAPS II score, vitamin D, Alveolar-Arterial Oxygen Gradient, hemoglobin, platelet count, WBC, PT, aPTT, TT) was weak or not significant (Figure 2).

Association between vWF and other variables with death and their predictive value for mortality

The Cox proportional model and the univariate logistic regression analysis showed that vWF, MELD score, and CRP were significantly associated with the event (death) and significant predictors of mortality in all three follow-up periods. The Cox proportional model showed that vWF, MELD score, CRP, and aPTT were significantly associated with 3-mo survival; that vWF, MELD score, CRP, and vitamin D were significantly associated with 6-mo survival; and that vWF, MELD score, CRP, vitamin D, ferritin, and aPTT were significantly associated with 1-year survival (Table 3). The univariate logistic regression analysis showed that vWF, MELD score, CRP, and D-dimer concentration were significant predictors of 3-mo mortality; that vWF, MELD score, CRP, and vitamin D were significant predictors of 6-mo mortality, and that vWF, MELD score, CRP, and ferritin were significant predictors of 1-year mortality (Table 3).

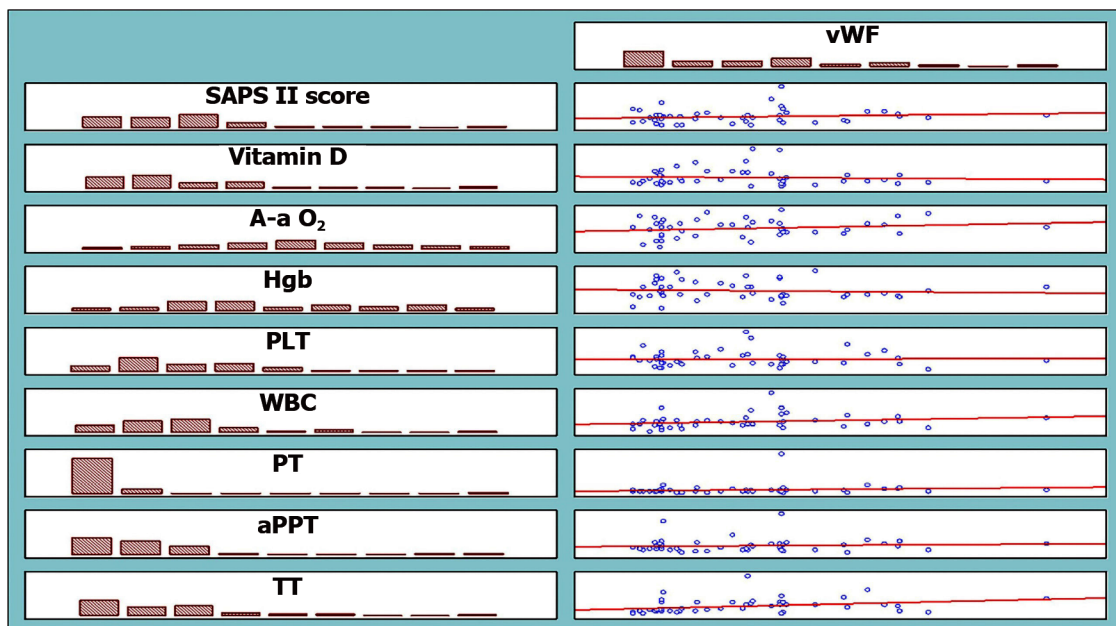
Regarding the association between vWF and survival in cirrhotic patients, the analysis showed that vWF was significantly associated with survival in all three follow-up periods and that each vWF unit significantly increased the daily association with death by 0.4% regarding 3-mo [Exp(B) hazard ratio (HR) = 1.004], by 0.6% regarding 6-mo [Exp(B) (HR) = 1.006], and by 0.4% [Exp(B) (HR) = 1.004] regarding 1-year survival. Regarding mortality, the analysis confirmed that each vWF unit significantly increased the probability for 3-mo mortality by 1.005 (*P* = 0.008) times, for 6-mo mortality by 1.006 (*p* = 0.005) times, and for 1-year mortality by 1.007 (*P* = 0.002) times (Table 3).

Regarding the association between CRP and survival in cirrhotic patients, the analysis showed that CRP was significantly associated with survival in all three follow-up periods and that each CRP unit significantly increased the daily association with the event (death) by 2.9% [Exp(B) (HR) = 1.029]



DOI: 10.4254/wjh.v14.i4.812 Copyright ©The Author(s) 2022.

Figure 1 Significant positive linear correlation between von-Willebrand factor and C-reactive protein score, model for end-stage liver disease score, sequential organ failure assessment score, CLIF-consortium organ failure score, ferritin, C-reactive protein, international normalized ratio, and D-dimer level. vWF: von-Willebrand factor; CTP: Child-Turcotte-Pugh; MELD: Model for End-stage Liver Disease; CRP: C-reactive protein; INR: International normalized ratio.



DOI: 10.4254/wjh.v14.i4.812 Copyright ©The Author(s) 2022.

Figure 2 Weak or insignificant correlation between von-Willebrand factor and Simplified Acute Physiology Score II score, vitamin D, A-a O₂, hemoglobin, platelets, white blood cell, prothrombin time, activated partial thromboplastin time, and thrombin time. vWF: von-Willebrand factor; SAPS: Simplified Acute Physiology Score; A-a O₂: Alveolar-arterial oxygen gradient; PLT: Platelets; WBC: White blood cell; PT: Prothrombin time; aPTT: Activated partial thromboplastin time; TT: Thrombin time.

regarding the 3-mo, by 4.4% [Exp(B) (HR) = 1.044] regarding the 6-mo, and by 2.5% [Exp(B) (HR) = 1.025] regarding the 1-year survival. More importantly, we confirmed that CRP was a significant predictor of mortality in patients with liver cirrhosis and that each CRP unit significantly increased the probability for 3-mo mortality by 1.044 ($P = 0.001$) times, for 6-mo mortality by 1.044 ($P = 0.001$) times, and for 1-year mortality by 1.046 ($P = 0.002$) times (Table 3).

Diagnostic performance of vWF, MELD score, and CRP for mortality

The ROC analysis did not confirm a statistically significant difference between the AUC values of the ROC curves for vWF and MELD score ($Z = 1.459$; $P = 0.1444$) and between the AUC values for vWF and CRP ($Z = 1.063$; $P = 0.2876$) regarding the 3-mo mortality [vWF-AUC = 0.734 (95%CI: 0.571-0.897), $P = 0.008$; MELD score-AUC = 0.884 (95%CI: 0.803-0.966), $P = 0.000$ and CRP-AUC = 0.848 (95%CI: 0.744-0.953), $P = 0.000$], between the AUC values for vWF and MELD score ($Z = 1.385$; $P = 0.1662$) and between the AUC values for vWF and CRP ($Z = 1.601$; $P = 0.547$) regarding the 6-mo mortality [vWF-AUC = 0.700 (95%CI: 0.544-0.856), $P = 0.011$; MELD score-AUC = 0.833 (95%CI: 0.725-0.940), $P = 0.000$ and CRP-AUC = 0.851 (95%CI: 0.758-0.943), $P = 0.000$], and between the AUC values for vWF and MELD score ($Z = 1.276$; $P = 0.20192$) and between the AUC values for vWF and CRP ($Z = 1.366$; $P = 0.1718$) regarding the 1-year mortality [vWF - AUC = 0.729 (95%CI: 0.590-0.868), $P = 0.002$; MELD score - AUC = 0.841 (95%CI: 0.742-0.941), $P = 0.000$ and CRP- AUC = 0.848 (95%CI: 0.747-0.948), $P = 0.000$] (Figure 3). According to the ROC curve, we received vWF cut off = 207.15; sensitivity = 85.5%; specificity = 71.4%, Youden index = 0.569 for 3-mo mortality, vWF cut off = 199.85; sensitivity = 80.0%; specificity = 74.4%, Youden index = 0.544 for 6-mo mortality, and vWF cut off = 199.35; sensitivity = 87.5%; specificity = 79.5%; Youden index = 0.67 for 1-year mortality.

DISCUSSION

Our study confirmed a significant relation between vWF and liver cirrhosis, CRP, ferritin, and D-dimer concentration. The study also confirmed that in patients with liver cirrhosis vWF, MELD score and CRP were significantly related to death and significant predictors of 3-mo, 6-mo, and 1-year mortality. Regarding mortality, our study did not confirm a significant difference between the diagnostic performance of vWF and MELD score and between the diagnostic performance of vWF and CRP.

Regarding its pronounced ability for short-term outcomes prediction, MELD score is the most widely accepted and currently the most useful indicator of liver function. Its wide scale provides high precision and good discriminating ability in assessing the death risk in cirrhotic patients[12]. However, the variability due to different laboratory methodologies[13], the low ability for prediction of post-

Table 1 Classification scores, von-Willebrand factor concentration, and biochemical and hemostatic parameters¹

Parameter	n	mean ± SD	Min	Max	Percentiles		
					25 th	50 th	75 th
CTP score	71	8.94 ± 2.95	5.00	15.00	6.00	9.00	11.00
MELD score	71	19.72 ± 9.86	6.00	59.00	11.00	18.00	25.00
vWF (%)	71	346.18 ± 155.97	150	850	214.00	318.40	410.10
CRP (mg/L)	71	21.15 ± 27.50	0.60	116.50	3.30	9.70	27.40
Ferritin (ng/mL)	62	290.45 ± 354.33	7.20	1586.10	47.50	149.40	464.30
Vitamin D (ng/mL)	46	17.65 ± 13.31	3.00	62.24	9.12	11.89	24.82
D-dimer (μg/mL)	69	2558.4 ± 1645.1	99.00	4500.00	969.90	2420.70	4427.00
PT (s)	71	20.50 ± 14.71	11.60	133.20	14.70	17.57	21.26
aPTT (s)	70	43.99 ± 14.32	23.56	120.00	35.53	41.94	48.07
TT (s)	70	24.10 ± 7.08	16.00	59.00	19.22	22.94	22.93
PLT (10 ⁹ /L)	71	105.51 ± 60.52	18.00	311.00	62.00	91.00	127.00
WBC (10 ⁹ /L)	71	6.62 ± 3.43	1.34	23.20	4.70	6.20	7.50
Bilirubin (μg/mL)	71	84.73 ± 119.64	8.00	611.00	25.30	39.30	83.00
Albumin (μg/mL)	71	29.68 ± 7.88	12.00	46.00	24.00	29.00	35.00
Sodium (μg/mL)	71	135.65 ± 4.77	117.00	141.00	134.00	137.00	138.00
Creatinine (μg/mL)	71	106.02 ± 96.15	41.00	530.00	61.30	72.00	105.40

¹The values are expressed as mean ± standard deviation (SD).

CTP: Child-Turcotte-Pugh; MELD: Model for end-stage liver disease; vWF: von-Willebrand factor; CRP: C-reactive protein; PT: Prothrombin time; aPTT: Activated partial thromboplastin time; TT: Thrombin time; PLT: Platelets; WBC: White blood cell.

transplant outcomes[14], the lower discriminating power of the lower MELD values[15], and its poor usefulness in compensated disease and in acute decompensation are the most pointed limitations of MELD score. Considering these facts many studies investigated the predictive value of other potential prognostic indicators in cirrhotic patients and compared it to the prognostic value of MELD score.

Most studies that evaluated the predictive value of vWF in cirrhotic patients confirmed significantly higher vWF values in patients with an advanced stage of disease[5,16-18] and in uncensored patients[18, 19] and also a significant predictive value of vWF for mortality[18]. We also confirmed a significantly higher vWF level in patients with higher CTP class and in higher MELD group. Still, considering the fact that vWF does not always adequately correlate with the indicators of liver dysfunction, it seems that higher vWF concentration in advanced disease is probably more directly related to the degree of PH than with the level of liver dysfunction. One of the most important findings of our research was that along with MELD score and CRP, vWF was significantly associated with death and that vWF was a significant predictor of mortality in all follow-up periods.

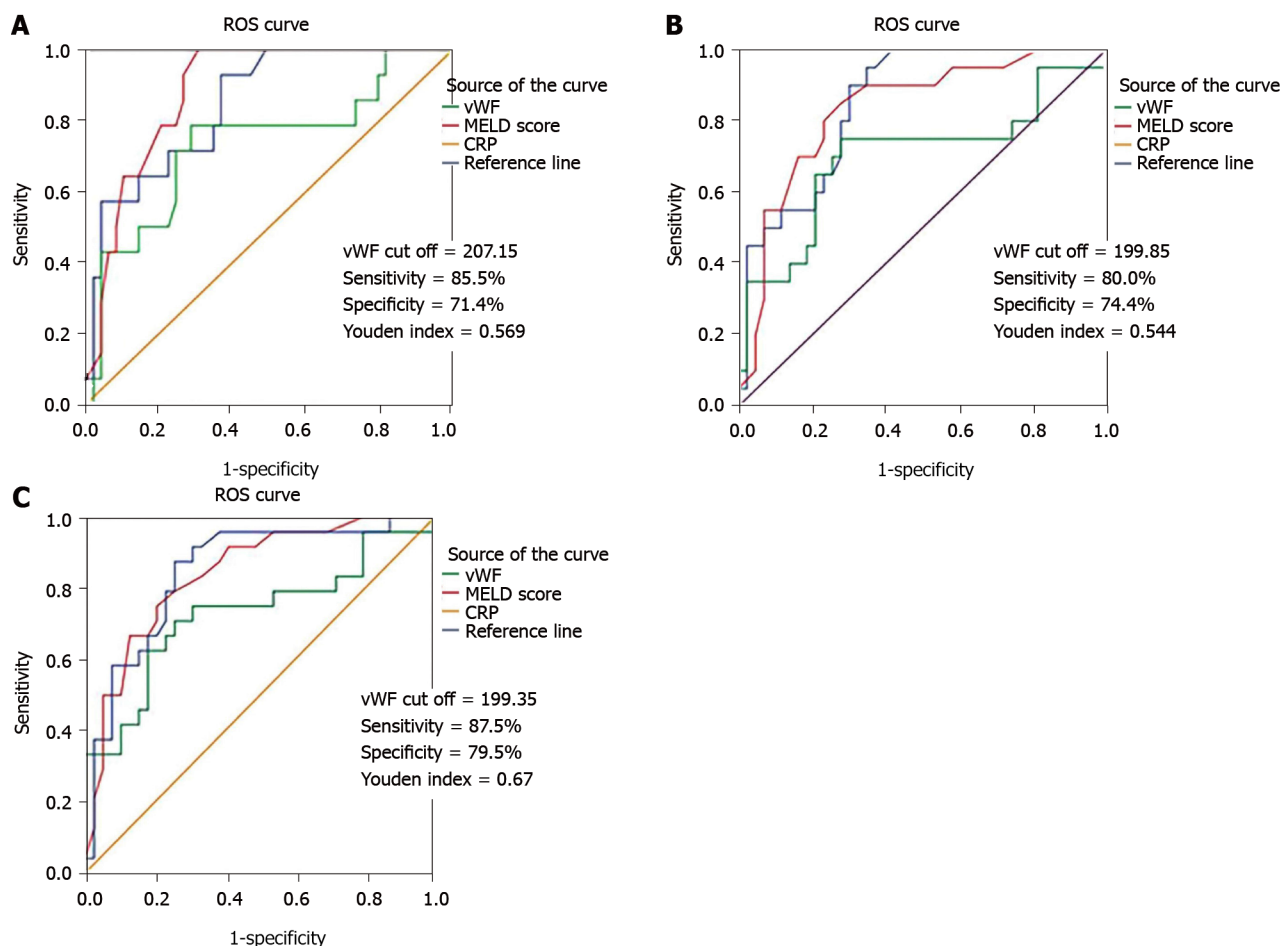
Since MELD score is currently the most reliable short-term mortality predictor in cirrhotic patients, we compared the diagnostic efficacy of vWF to the diagnostic efficacy of MELD score. The ROC analysis in the study did not confirm a significant difference between the diagnostic performances of the two parameters, suggesting that the predictive value of vWF for mortality is similar to the predictive value of MELD score. Most studies in the literature that compared the diagnostic performance of the two parameters for mortality came across similar results[16,18]. The study of Kalambokis *et al*[17] demonstrated that the predictive performance of vWF for new-onset ascites and for variceal bleeding was stronger than that of MELD score, suggesting that in terms of liver disease complications, the procoagulant state could be a stronger determining factor than the severity of the liver disease. Previous research investigating the prognostic role of vWF defined cut-off values with the best sensitivity and specificity discriminating patients with significantly different prognoses[16-18]. Ferlitsch *et al*[18] defined a vWF cut-off value of 315% that stratifies patients with completely different survival. La Mura *et al*[16] defined vWF value of 216 U/dL, differencing two groups of patients with significantly different probability of survival without the occurrence of clinical events related to death and transplantation. Kalambokis *et al*[17] defined a vWF cut-off value of 392%, indicating significantly higher 3-year mortality in patients with liver cirrhosis. According to the ROC curves, we also defined cut-off values for mortality (207.15% for 3-mo, 199.85% for 6-mo, and 199.35% for 1-year mortality) that did not differ much between each other.

Table 2 The relation between von-Willebrand factor and stage of disease, systemic inflammatory response syndrome, and other inflammatory and prognostic indicators¹

Parameter	vWF							P value
	n	mean ± SD	Min	Max	Percentiles			
					25 th	50 th	75 th	
CTP score								
Class A	18	258.0 ± 104.2	150	586	190.0	228.0	276.0	Kruskal-Wallis <i>H</i> test: Chi-square (2) = 10.8177; <i>P</i> = 0.0045 ^a
Class B	25	336.5 ± 122.5	150	650	262.0	341.0	400.0	
Class C	28	411.5 ± 182.2	198	850	246.0	402.8	560.0	
Class A/B = Mann-Whitney <i>U</i> test: <i>Z</i> = -2.191; <i>P</i> = 0.028 ^a								
Class A/C = Mann-Whitney <i>U</i> test: <i>Z</i> = -3.028; <i>P</i> = 0.002 ^a								
Class B/C = Mann-Whitney <i>U</i> test: <i>Z</i> = -1.639; <i>P</i> = 0.101								
MELD score								
Group 1	9	271.5 ± 106.3	150	513	225.0	257.0	276.0	Kruskal-Wallis <i>H</i> test: Chi-square (2) = 10.3357; <i>P</i> = 0.0057 ^a
Group 2	33	301.0 ± 115.9	161	650	200.0	296.0	350.0	
Group 3	29	420.8 ± 179.7	150	850	258.0	409.0	548.0	
Group 1/2 = Mann-Whitney <i>U</i> test: <i>Z</i> = -0.690; <i>P</i> = 0.507								
Group 1/3 = Mann-Whitney <i>U</i> test: <i>Z</i> = -0.031; <i>P</i> = 0.029 ^a								
Group 2/3 = Mann-Whitney <i>U</i> test: <i>Z</i> = -2.942; <i>P</i> = 0.003 ^a								
SIRS score								
SIRS (+)	43	339.2 ± 142.0	150	680	200.0	336.5	409.0	Mann-Whitney <i>U</i> test: <i>Z</i> = -0.3529; <i>P</i> = 0.7241
SIRS (-)	28	356.9 ± 177.5	150	850	216.0	309.2	410.8	
Ferritin (ng/mL)								
< 200	39	310.0 ± 140.7	150.0	650.0	198.0	262.0	405.0	Kruskal-Wallis <i>H</i> test: Chi-square (2) = 7.1653; <i>P</i> = 0.0278 ^a
200-400	5	343.3 ± 91.2	253.0	458.9	258.0	336.5	410.1	
> 400	18	423.9 ± 171.0	199.7	850.0	300.0	400.5	548.0	
< 200/200-400 = Mann-Whitney <i>U</i> test: <i>Z</i> = -0.292; <i>P</i> = 0.311								
< 200/> 400 = Mann-Whitney <i>U</i> test: <i>Z</i> = -2.584; <i>P</i> = 0.010 ^a								
200-400/> 400 = Mann-Whitney <i>U</i> test: <i>Z</i> = -0.820; <i>P</i> = 0.446								
Vitamin D (ng/mL)								
≤ 20	22	279.8 ± 108.9	150.0	513.0	199.7	241.0	344.0	Mann-Whitney <i>U</i> test: <i>Z</i> = -1.6916; <i>P</i> = 0.0907
> 20	23	372.0 ± 179.8	161.0	850.0	214.0	385.0	458.9	
PLT (10 ⁹ / L)								
≤ 100	40	350.8 ± 171.4	161	850	207.2	312.7	412.1	Mann-Whitney <i>U</i> test: <i>Z</i> = -0.02898; <i>P</i> = 0.9769
> 100	31	340.2 ± 136.0	150	598	239.0	337.0	405.0	
D-dimer (µg/ mL)								
≤ 500	6	205.2 ± 38.5	150	262	187.2	203.5	225.0	Mann-Whitney <i>U</i> test: <i>Z</i> = 2.6407; <i>P</i> = 0.0083 ^a
> 500	63	355.9 ± 156.2	150	850	216.0	337.0	411.5	

¹The values are expressed as mean \pm standard deviation (SD).^a*P* < 0.05.

von-Willebrand factor (vWF) was significantly higher in higher Child-Turcotte-Pugh (CTP) class, model for end-stage liver disease (MELD) group, serum ferritin (SF) group and in patients with elevated D-dimer level. SIRS: Systemic inflammatory response syndrome; PLT: Platelets.



DOI: 10.4254/wjh.v14.i4.812 Copyright ©The Author(s) 2022.

Figure 3 Receiver operating characteristic analysis of the diagnostic performance of von-Willebrand factor, model for end-stage liver disease score, and C-reactive protein for mortality. A: 3-mo mortality; B: 6-mo mortality; C: 1-yr mortality. The difference between the area under the curve (AUC) values for von-Willebrand factor (vWF) and model for end-stage liver disease (MELD) score and between the AUC values for vWF and C-reactive protein (CRP) regarding all three follow-up periods was not statistically significant ($Z = 1.459$; $P = 0.1444$ and $Z = 1.063$; $P = 0.2876$ for 3-mo mortality, $Z = 1.385$; $P = 0.1662$ and $Z = 1.601$; $P = 0.547$ for 6-mo mortality, $Z = 1.276$; $P = 0.20192$ and $Z = 1.366$; $P = 0.1718$ for 1-yr mortality, respectively). ROC: Receiver operating characteristic.

Regarding the complex pathogenesis of PH and its influence on liver disease progression, we tried to make a deeper insight into the role of ED and SI, into their mutual interaction, and also into their interaction with the numerous and complex hemostatic abnormalities within coagulopathy associated with chronic liver disease. In this context, we analyzed the relation between vWF and some biological variables that reflect SI or that are considered to have some prognostic potential in patients with liver cirrhosis. Our study showed that vWF was not only associated with CTP and MELD score, but it was also significantly associated with some other variable and prognostic indicators in these patients.

Since our analysis confirmed a strong significant correlation only between vWF and D-dimer concentration, we wanted to analyze this relation more profoundly. D-dimer concentration is a specific indicator of fibrin turnover and the most widely used indicator of active coagulation and fibrinolysis. Hyperfibrinolysis is present in approximately one-third of cirrhotic patients[20], and in some of them, low-grade disseminated intravascular coagulation has also been registered[21]. It has been established that the abnormalities in the fibrinolytic system were more pronounced in patients with advanced, decompensated cirrhosis[20,22]. Still, the main dilemma regarding hyperfibrinolysis in these patients is whether it occurs mainly as a primary phenomenon or is induced secondarily as a response to activated coagulation, most commonly within disseminated intravascular coagulation. Previously reported data related to the prognostic relevance of D-dimer levels in cirrhotic patients have confirmed a significant association between elevated D-dimer concentration and liver dysfunction[22]. Although some authors suggest that the intense ascites reabsorption stimulates hyperfibrinolysis in patients with advanced disease[23,24] still, endotoxemia is probably the key factor that induces hyperfibrinolysis through endothelial activation and release of fibrinolytic substances[25]. It seems that the crucial role of ED in these developments may explain the relationship between elevated vWF and D-dimer concentration. In addition to the strong correlation, we also registered significantly higher vWF values in patients with elevated ($> 500 \mu\text{g/mL}$) D-dimer levels (355.9 ± 156.2 vs 205.2 ± 38.5 , $P = 0.0232$). More importantly, our

Table 3 Univariate Cox proportional model and univariate logistic regression analysis¹

Parameter	Univariate Cox proportional model						Univariate logistic regression analysis					
	3-mo		6-mo		1-yr		3-mo		6-mo		1-yr	
	Sig.	Exp (B)	Sig.	Exp (B)	Sig.	Exp (B)	Sig.	Exp (B)	Sig.	Exp (B)	Sig.	Exp (B)
vWF	0.004a	1.004	0.005a	1.006	0.000a	1.004	0.008a	1.005	0.005a	1.006	0.002a	1.007
MELD	0.000a	1.144	0.000a	1.157	0.000a	1.116	0.000a	1.191	0.000a	1.157	0.000a	1.176
CRP	0.000a	1.029	0.001a	1.044	0.000a	1.025	0.001a	1.044	0.001a	1.044	0.002a	1.046
Vitamin D	0.077	0.923	0.013a	0.877	0.040a	0.939	0.096	0.918	0.013a	0.877	0.061	0.931
Ferritin	0.119	1.001	0.333	1.001	0.016a	1.001	0.104	1.001	0.333	1.001	0.015a	1.003
aPTT	0.000a	1.05	0.068	1.052	0.000a	1.051	0.059	1.049	0.068	1.052	0.067	1.055
TT	0.258	1.034	0.588	1.02	0.426	1.021	0.292	1.041	0.588	1.02	0.529	1.023
D-dimer	0.061	1	0.014a	1	0.059	1	0.003a	1.001	0.014	1	0.008	1
Dependent variable-survival in days; significant for ^a P < 0.05						Dependent variable-mortality no/yes; significant for ^a P < 0.05						

¹von-Willebrand factor (vWF), model for end-stage liver disease (MELD) score, and C-reactive protein (CRP) were significantly associated with 3-mo, 6-mo, and 1-yr survival and significant predictors of 3-mo, 6-mo, and 1-yr mortality.
^aP < 0.05.

aPTT: activated partial thromboplastin time; TT: thrombin time.

study also confirmed that elevated D-dimer levels were a significant predictor of 3-mo mortality ($P = 0.003$). Some previous studies have proven that in patients with liver cirrhosis elevated D-dimer levels were related to poor outcomes and high short-term mortality[26,27]. Still, as far as we are aware, elevated D-dimer levels have not been specifically related to 3-mo mortality previously. These findings confirm the important role of ED underlying the hemostatic abnormalities as well as the relation between ED, procoagulant tendency, and short-term mortality in cirrhotic patients.

Taking into account the important prognostic role of SI, especially in advanced disease, we analyzed the SIRS occurrence, its relation to CRP as SIRS indicator, and its relation to vWF as an indicator of ED. Considering the fact that ED and SI coexist and support each other, we assumed that SIRS would be accompanied by higher vWF values. On the contrary, the analysis did not confirm a significant difference between vWF values in patients with and without SIRS ($P = 0.7241$). The positive linear correlation between CRP and vWF ($r = 0.315$) and the absent relation between vWF and SIRS mainly indicates that the applied ACCP / SCCM criteria for SIRS do not reflect the presence of SI adequately. Some previous studies have shown that ACCP/SCCM criteria are generally not suitable for use in cirrhotic patients[28,29], which has raised interest in CRP as an indicator of SIRS and also as a prognostic indicator in cirrhotic patients. According to some findings, elevated CRP in cirrhotic patients is not only a reliable indicator of active bacterial infection[30], but it may also reflect persistent low-grade SI even outside the context of active infection[6]. Moreover, one of the most significant limitations

of MELD score is that the formula does not include a variable that reflects inflammation, such as leukocyte count or CRP, suggesting that MELD score does not take into account the presence of SI, a condition that from a prognostic point of view has great importance in cirrhotic patients[31]. Regarding the predictive value of CRP for mortality, our study confirmed that along with vWF and MELD score, CRP has been significantly associated with death and that CRP has been a significant mortality predictor in all three follow-up periods, which was the most important finding regarding this issue. The ROC analysis comparing the corresponding AUC values for mortality did not show a significant difference between the diagnostic efficacy of vWF and CRP, indicating that in cirrhotic patients vWF and CRP were a significant mortality predictor with a similar predictive value, which, according to our knowledge on this topic, has not been reported previously.

Elevated SF is registered in about 30% of patients with advanced liver disease, and it is mainly due to the release of ferritin from the damaged hepatocytes[32,33]. Previous research has shown a significant association between SF and almost all known predictors of poor outcome in decompensated patients (MELD score, CTP score, leukocyte count, sodium level, ACLF stages, spontaneous bacterial peritonitis, hepatic encephalopathy, hepatorenal syndrome)[34], but as far as we are aware, the relation between vWF and SF in cirrhotic patients has not been previously evaluated. Except for the significant positive correlation between vWF and ferritin ($r = 0.360$, $P = 0.04$), we also confirmed significantly higher vWF levels in patients with higher SF concentration ($P = 0.0278$). Despite the well-known relation between SF and liver cirrhosis, several studies have also confirmed the significant prognostic value of SF for mortality[32,33]. Walker *et al*[33] confirmed that SF was higher than 400 $\mu\text{g/L}$ in all uncensored cirrhotic patients and that SF above 500 $\mu\text{g/L}$ was an accurate predictor of 6-mo and 1-year mortality. The exact pathophysiological mechanism that explains this relation is not completely understood. It is presumed that an increased hepatic iron concentration promotes additional oxidative hepatocellular injury and also stellate cell activation, which can explain the ferritin involvement in the progression of liver disease and the relation between SF and mortality in cirrhotic patients[32]. Regarding mortality prediction, our study confirmed that in patients with liver cirrhosis SF was significantly associated with 1-year survival ($P = 0.016$) and that SF was a significant predictor of 1-year mortality ($P = 0.015$). Unlike some studies [32], our research did not confirm an association between SF and 3-mo and 6-mo mortality and a significant predictive value for short-term mortality in cirrhotic patients.

It is known that chronic liver disease is related to high prevalence of vitamin D deficiency that according to some data might reach up to 90%[35]. It is also considered that vitamin D deficiency additionally worsens liver dysfunction; it is related to decompensation and has a negative impact on the prognosis and survival especially in advanced liver disease[36,37]. Our study confirmed that vitamin D concentration was significantly associated with 6-mo and 1-year survival and that vitamin D was a significant predictor of 6-mo mortality ($P = 0.013$). However, according to some data, the cut-off value that defines vitamin D deficiency (20 ng/mL) does not appear to be a significant risk factor in cirrhotic patients[36]. In this context, one study showed that mortality was significantly affected only when a vitamin D cut-off value of 6 ng/mL was applied[36]. Despite the well-established predictive value of vitamin D in cirrhotic patients, our study did not confirm a relationship between vWF and vitamin D deficiency. We did not show a significant correlation between vWF and vitamin D ($r = 0.064$) or significantly higher vWF values in patients with vitamin D deficiency ($P = 0.0907$). The negative prognostic influence of vWF in cirrhotic patients is mainly due to its prothrombotic potential, which is a factor for progression of PH. On the other hand, the prognostic potential of vitamin D is mostly due to its effect on the immune system. Hence, it seems that in this case, these two parameters are involved differently in the pathogenesis of liver disease progression, which may explain the absence of a direct association between them.

CONCLUSION

In patients with liver cirrhosis, vWF is elevated and significantly related to the stage of the disease and other prognostic and inflammatory indicators. vWF is significantly associated with death and is a significant predictor of 3-mo, 6-mo, and 1-year mortality similar to MELD score and CRP. The significant prognostic value of CRP in cirrhotic patients confirms the important prognostic role of SI in these patients and highlights the importance of recognizing the condition for more accurate mortality prediction. Although generally reflecting an increased prothrombotic state, hyperfibrinolysis and elevated D-dimer levels in these patients should be analyzed in relation to clinical presentation, stage of disease, and other hemostatic parameters. The significant interaction between the variables analyzed in the study has reflected the complex and dynamic interaction between ED, SI, and cirrhosis-related coagulopathy that occurs in patients with liver cirrhosis.

ARTICLE HIGHLIGHTS

Research background

Endothelial dysfunction (ED) and systemic inflammation (SI) play an important role in the pathogenesis of portal hypertension (PH). Von-Willebrand factor (vWF) is an indicator of ED that favors a prothrombotic state, and hence it is directly involved in the progression of PH. Although previous research confirmed its prognostic value in cirrhotic patients, its relation to other prognostic indicators has not been properly evaluated. By analyzing the relation between vWF and other biological variables with certain prognostic potential, our research provides an insight into the complex relation between ED, SI, and liver-disease related coagulopathy in cirrhotic patients.

Research motivation

Although Model for End-stage Liver Disease (MELD) score is the most widely used prognostic score in cirrhotic patients, it does not take into account the presence of circulatory dysfunction or SI and it does not assess the coagulopathy properly. This raises the need for further research towards identifying new biological variables with certain prognostic potential in cirrhotic patients and evaluating their prognostic value for mortality. This could lead toward defining new prognostic scores or improve the predictive value of those currently in use. Recent researchers have suggested that some biological variables such as vWF, C-reactive protein (CRP), ferritin, and vitamin D possess certain prognostic potential in cirrhotic patients, but this area has not been widely investigated.

Research objectives

We tried to analyze the relation between vWF and liver cirrhosis and the relation between vWF and several inflammatory indicators and other variables that have certain prognostic potential in cirrhotic patients. We also tried to evaluate the prognostic value of vWF and several parameters in terms of 3-mo, 6-mo, and 1-year mortality.

Research methods

We conducted an analytic prospective study that enrolled 71 patients with liver cirrhosis and portal hypertension. At enrollment, we performed detailed examinations (abdominal ultrasound, complete blood count, biochemical blood analysis, basic hemostasis, D-dimer, vWF concentration) in order to assess the stage of the liver disease after which we followed the patients for 1 year. We analyzed the relation between vWF and chronic liver disease and between vWF and several prognostic and inflammatory indicators. We prospectively evaluated the prognostic value of vWF and several other variables (MELD score, CRP, ferritin, vitamin D, activated partial thromboplastin time, thrombin time, D-dimer concentration) in terms of 3-mo, 6-mo, and 1-year mortality, and we compared the diagnostic efficacy of vWF for mortality to other significant mortality predictors.

Research results

Our study confirmed a significant relation between vWF and the stage of liver disease, CRP, ferritin, and D-dimer concentration. The study also confirmed that in patients with liver cirrhosis vWF, MELD score, and CRP were significantly related to 3-mo, 6-mo, and 1-year survival and significant predictors of 3-mo, 6-mo, and 1-year mortality. Our study did not confirm a significant difference between the diagnostic performance for mortality of vWF and MELD score and between the diagnostic performance of vWF and CRP.

Research conclusions

In patients with liver cirrhosis, vWF is a significant and relevant mortality predictor similar to MELD score and CRP, which highlights the important role of the ED in the pathogenesis of PH. Elevated CRP is a significant mortality predictor in patients with liver cirrhosis, which emphasizes the importance of recognizing the presence of SI for accurate mortality prediction. The relation between vWF and D-dimer concentration, ferritin, and CRP reflects the complex and dynamic interaction between ED, SI, and cirrhosis-related coagulopathy that occurs in patients with liver cirrhosis.

Research perspectives

Future research should be focused on identifying specific clinical settings in which vWF would have more accurate prognostic value.

ACKNOWLEDGEMENTS

The authors are very grateful to Jane Misevski, MD for critical revision of the manuscript for important intellectual content, to Violeta Neceva, MD, PhD from the Hemostasis Laboratory of Institute of

Transfusional Medicine for the technical assistance, to Vesna Velic-Stefanovska MD, PhD for the assistance with the statistical analysis, and to Lence Danevska for proofreading the manuscript.

FOOTNOTES

Author contributions: Curakova Ristovska E contributed to study concept and design, acquisition of data, analysis, and interpretation of data and was responsible for the integrity of the work as a whole; Genadieva-Dimitrova M contributed to the critical revision of the manuscript and supervision.

Institutional review board statement: The research was reviewed and approved by the ethical committees for human research of the Medical Faculty, Ss. Cyril and Methodius University in Skopje, Republic of North Macedonia.

Informed consent statement: All patients that participated in the research signed an informed consent form for participation in the study.

Conflict-of-interest statement: The author declares that there is no conflict of interest regarding the publication of this paper.

Data sharing statement: All relevant data are available within the article.

Open-Access: This article is an open-access article that was selected by an in-house editor and fully peer-reviewed by external reviewers. It is distributed in accordance with the Creative Commons Attribution NonCommercial (CC BY-NC 4.0) license, which permits others to distribute, remix, adapt, build upon this work non-commercially, and license their derivative works on different terms, provided the original work is properly cited and the use is non-commercial. See: <http://creativecommons.org/licenses/by-nc/4.0/>

Country/Territory of origin: North Macedonia

ORCID number: Elena Curakova Ristovska 0000-0001-8855-3045; Magdalena Genadieva-Dimitrova 0000-0002-9934-983X.

Corresponding Author's Membership in Professional Societies: United European Gastroenterology; European Society of Gastrointestinal Endoscopy; European Society for Clinical Nutrition and Metabolism; and World Gastroenterology Organization.

S-Editor: Gong ZM

L-Editor: Filipodia

P-Editor: Wu RR

REFERENCES

- 1 Di Martino V, Weil D, Cervoni JP, Thevenot T. New prognostic markers in liver cirrhosis. *World J Hepatol* 2015; 7: 1244-1250 [PMID: 26019739 DOI: 10.4254/wjh.v7.i9.1244]
- 2 Bosch J, García-Pagán JC. Complications of cirrhosis. I. Portal hypertension. *J Hepatol* 2000; 32: 141-156 [PMID: 10728801 DOI: 10.1016/s0168-8278(00)80422-5]
- 3 Iwakiri Y, Groszmann RJ. Vascular endothelial dysfunction in cirrhosis. *J Hepatol* 2007; 46: 927-934 [PMID: 17391799 DOI: 10.1016/j.jhep.2007.02.006]
- 4 Wannhoff A, Müller OJ, Friedrich K, Rupp C, Klöters-Plachky P, Leopold Y, Brune M, Senner M, Weiss KH, Stremmel W, Schemmer P, Katus HA, Gotthardt DN. Effects of increased von Willebrand factor levels on primary hemostasis in thrombocytopenic patients with liver cirrhosis. *PLoS One* 2014; 9: e112583 [PMID: 25397410 DOI: 10.1371/journal.pone.0112583]
- 5 Lisman T, Bongers TN, Adelmeijer J, Janssen HL, de Maat MP, de Groot PG, Leebeek FW. Elevated levels of von Willebrand Factor in cirrhosis support platelet adhesion despite reduced functional capacity. *Hepatology* 2006; 44: 53-61 [PMID: 16799972 DOI: 10.1002/hep.21231]
- 6 Cervoni JP, Thévenot T, Weil D, Muel E, Barbot O, Sheppard F, Monnet E, Di Martino V. C-reactive protein predicts short-term mortality in patients with cirrhosis. *J Hepatol* 2012; 56: 1299-1304 [PMID: 22314431 DOI: 10.1016/j.jhep.2011.12.030]
- 7 Dirchwolf M, Ruf AE. Role of systemic inflammation in cirrhosis: From pathogenesis to prognosis. *World J Hepatol* 2015; 7: 1974-1981 [PMID: 26261687 DOI: 10.4254/wjh.v7.i16.1974]
- 8 Cazzaniga M, Dionigi E, Gobbo G, Fioretti A, Monti V, Salerno F. The systemic inflammatory response syndrome in cirrhotic patients: relationship with their in-hospital outcome. *J Hepatol* 2009; 51: 475-482 [PMID: 19560225 DOI: 10.1016/j.jhep.2009.04.017]
- 9 Curakova Ristovska E. Endothelial dysfunction and systemic inflammation in the pathogenesis and progression of portal hypertension. In: Qi X. Portal hypertension-Recent advances. London: IntechOpen; 2021 [DOI: 10.5772/intechopen.96172]
- 10 Vairappan B. Endothelial dysfunction in cirrhosis: Role of inflammation and oxidative stress. *World J Hepatol* 2015; 7: 443-459 [PMID: 25848469 DOI: 10.4254/wjh.v7.i3.443]
- 11 Li CJ, Yang ZH, Lu FG, Shi XL, Liu DL. Clinical significance of fibrotic, haemostatic and endotoxic changes in patients

- with liver cirrhosis. *Acta Gastroenterol Belg* 2018; **81**: 404-409 [PMID: 30350529]
- 12 **Cholongitas E**, Marelli L, Shusang V, Senzolo M, Rolles K, Patch D, Burroughs AK. A systematic review of the performance of the model for end-stage liver disease (MELD) in the setting of liver transplantation. *Liver Transpl* 2006; **12**: 1049-1061 [PMID: 16799946 DOI: 10.1002/Lt.20824]
 - 13 **Trotter JF**, Brimhall B, Arjal R, Phillips C. Specific laboratory methodologies achieve higher model for endstage liver disease (MELD) scores for patients listed for liver transplantation. *Liver Transpl* 2004; **10**: 995-1000 [PMID: 15390325 DOI: 10.1002/Lt.20195]
 - 14 **Yoo HY**, Thuluvath PJ. Short-term postliver transplant survival after the introduction of MELD scores for organ allocation in the United States. *Liver Int* 2005; **25**: 536-541 [PMID: 15910490 DOI: 10.1111/j.1478-3231.2005.01011.x]
 - 15 **Huo TI**, Lin HC, Wu JC, Lee FY, Hou MC, Lee PC, Chang FY, Lee SD. Different model for end-stage liver disease score block distributions may have a variable ability for outcome prediction. *Transplantation* 2005; **80**: 1414-1418 [PMID: 16340784 DOI: 10.1097/01.tp.0000181164.19658.7a]
 - 16 **La Mura V**, Reverter JC, Flores-Arroyo A, Raffa S, Reverter E, Seijo S, Abalde JG, Bosch J, García-Pagán JC. Von Willebrand factor levels predict clinical outcome in patients with cirrhosis and portal hypertension. *Gut* 2011; **60**: 1133-1138 [PMID: 21427197 DOI: 10.1136/gut.2010.235689]
 - 17 **Kalambokis GN**, Oikonomou A, Christou L, Kolaitis NI, Tsianos EV, Christodoulou D, Baltayiannis G. von Willebrand factor and procoagulant imbalance predict outcome in patients with cirrhosis and thrombocytopenia. *J Hepatol* 2016; **65**: 921-928 [PMID: 27297911 DOI: 10.1016/j.jhep.2016.06.002]
 - 18 **Ferlitsch M**, Reiberger T, Hoke M, Salz P, Schwengerer B, Ulbrich G, Payer BA, Trauner M, Peck-Radosavljevic M, Ferlitsch A. von Willebrand factor as new noninvasive predictor of portal hypertension, decompensation and mortality in patients with liver cirrhosis. *Hepatology* 2012; **56**: 1439-1447 [PMID: 22532296 DOI: 10.1002/hep.25806]
 - 19 **Curakova Ristovska E**, Genadieva-Dimitrova M, Caloska-Ivanova V, Misevski J. Von-Willebrand factor as a predictor of three-month mortality in patients with liver cirrhosis compared to MELD score. *Acta Gastroenterol Belg* 2019; **82**: 487-493 [PMID: 31950803]
 - 20 **Hu KQ**, Yu AS, Tiyyagura L, Redeker AG, Reynolds TB. Hyperfibrinolytic activity in hospitalized cirrhotic patients in a referral liver unit. *Am J Gastroenterol* 2001; **96**: 1581-1586 [PMID: 11374703 DOI: 10.1111/j.1572-0241.2001.03781.x]
 - 21 **Violi F**, Ferro D, Basili S, Saliola M, Quintarelli C, Alessandri C, Cordova C. Association between low-grade disseminated intravascular coagulation and endotoxemia in patients with liver cirrhosis. *Gastroenterology* 1995; **109**: 531-539 [PMID: 7615203 DOI: 10.1016/0016-5085(95)90342-9]
 - 22 **Cong YL**, Wei YX, Zhang LW, Yin ZJ, Bai J. [The relationship between hemostatic changes in liver cirrhosis patients with different degrees of liver lesions in reference to Child-Pugh scores]. *Zhonghua Gan Zang Bing Za Zhi* 2005; **13**: 31-34 [PMID: 15670488]
 - 23 **Saray A**, Mesihovic R, Gornjakovic S, Vanis N, Mehmedovic A, Nahodovic K, Glavas S, Papovic V. Association between high D-dimer plasma levels and ascites in patients with liver cirrhosis. *Med Arch* 2012; **66**: 372-374 [PMID: 23409513 DOI: 10.5455/medarh.2012.66.372-374]
 - 24 **Agarwal S**, Joyner KA Jr, Swaim MW. Ascites fluid as a possible origin for hyperfibrinolysis in advanced liver disease. *Am J Gastroenterol* 2000; **95**: 3218-3224 [PMID: 11095345 DOI: 10.1111/j.1572-0241.2000.03299.x]
 - 25 **Hanss M**, Collen D. Secretion of tissue-type plasminogen activator and plasminogen activator inhibitor by cultured human endothelial cells: modulation by thrombin, endotoxin, and histamine. *J Lab Clin Med* 1987; **109**: 97-104 [PMID: 3098881]
 - 26 **Primignani M**, Dell'Era A, Bucciarelli P, Bottasso B, Bajetta MT, de Franchis R, Cattaneo M. High-D-dimer plasma levels predict poor outcome in esophageal variceal bleeding. *Dig Liver Dis* 2008; **40**: 874-881 [PMID: 18329968 DOI: 10.1016/j.dld.2008.01.010]
 - 27 **Li Y**, Qi X, Li H, Dai J, Deng H, Li J, Peng Y, Liu X, Sun X, Guo X. D-dimer level for predicting the in-hospital mortality in liver cirrhosis: A retrospective study. *Exp Ther Med* 2017; **13**: 285-289 [PMID: 28123503 DOI: 10.3892/etm.2016.3930]
 - 28 **Lan P**, Wang SJ, Shi QC, Fu Y, Xu QY, Chen T, Yu YX, Pan KH, Lin L, Zhou JC, Yu YS. Comparison of the predictive value of scoring systems on the prognosis of cirrhotic patients with suspected infection. *Medicine (Baltimore)* 2018; **97**: e11421 [PMID: 2995791 DOI: 10.1097/MD.00000000000011421]
 - 29 **Curakova Ristovska E**, Genadieva-Dimitrova M, Caloska-Ivanova V, NikolovskaE, Joksimovic N, Todorovska B, Milichevik I, Isahi U. The SIRS score relevance for assessment of systemic inflammation compared to C-reactive protein in patients with liver cirrhosis. *Mac Med Preview* 2019; **73**: 24-30
 - 30 **Lazzarotto C**, Ronsoni MF, Fayad L, Nogueira CL, Bazzo ML, Narciso-Schiavon JL, de Lucca Schiavon L, Dantas-Corrêa EB. Acute phase proteins for the diagnosis of bacterial infection and prediction of mortality in acute complications of cirrhosis. *Ann Hepatol* 2013; **12**: 599-607 [PMID: 23813138]
 - 31 **Di Martino V**, Coutiris C, Cervoni JP, Dritsas S, Weil D, Richou C, Vanlemmens C, Thevenot T. Prognostic value of C-reactive protein levels in patients with cirrhosis. *Liver Transpl* 2015; **21**: 753-760 [PMID: 25677965 DOI: 10.1002/Lt.24088]
 - 32 **Maiwall R**, Kumar S, Chaudhary AK, Maras J, Wani Z, Kumar C, Rastogi A, Bihari C, Vashisht C, Sarin SK. Serum ferritin predicts early mortality in patients with decompensated cirrhosis. *J Hepatol* 2014; **61**: 43-50 [PMID: 24681346 DOI: 10.1016/j.jhep.2014.03.027]
 - 33 **Walker NM**, Stuart KA, Ryan RJ, Desai S, Saab S, Nicol JA, Fletcher LM, Crawford DH. Serum ferritin concentration predicts mortality in patients awaiting liver transplantation. *Hepatology* 2010; **51**: 1683-1691 [PMID: 20225256 DOI: 10.1002/hep.23537]
 - 34 **Kowdley KV**, Brandhagen DJ, Gish RG, Bass NM, Weinstein J, Schilsky ML, Fontana RJ, McCashland T, Cotler SJ, Bacon BR, Keeffe EB, Gordon F, Polissar N; National Hemochromatosis Transplant Registry. Survival after liver transplantation in patients with hepatic iron overload: the national hemochromatosis transplant registry. *Gastroenterology* 2005; **129**: 494-503 [PMID: 16083706 DOI: 10.1016/j.gastro.2005.05.004]
 - 35 **Arteh J**, Narra S, Nair S. Prevalence of vitamin D deficiency in chronic liver disease. *Dig Dis Sci* 2010; **55**: 2624-2628 [PMID: 19960254 DOI: 10.1007/s10620-009-1069-9]

- 36 **Stokes CS**, Krawczyk M, Reichel C, Lammert F, Grünhage F. Vitamin D deficiency is associated with mortality in patients with advanced liver cirrhosis. *Eur J Clin Invest* 2014; **44**: 176-183 [PMID: [24236541](#) DOI: [10.1111/eci.12205](#)]
- 37 **Putz-Bankuti C**, Pilz S, Stojakovic T, Scharnagl H, Pieber TR, Trauner M, Obermayer-Pietsch B, Stauber RE. Association of 25-hydroxyvitamin D levels with liver dysfunction and mortality in chronic liver disease. *Liver Int* 2012; **32**: 845-851 [PMID: [22222013](#) DOI: [10.1111/j.1478-3231.2011.02735.x](#)]



Published by **Baishideng Publishing Group Inc**
7041 Koll Center Parkway, Suite 160, Pleasanton, CA 94566, USA

Telephone: +1-925-3991568

E-mail: bpgoffice@wjgnet.com

Help Desk: <https://www.f6publishing.com/helpdesk>

<https://www.wjgnet.com>

