

# World Journal of *Hepatology*

*World J Hepatol* 2023 March 27; 15(3): 321-440



**REVIEW**

- 321 Main factors influencing long-term outcomes of liver transplantation in 2022  
*Fuochi E, Anastasio L, Lynch EN, Campani C, Dragoni G, Milani S, Galli A, Innocenti T*

**MINIREVIEWS**

- 353 COVID-19 and liver dysfunction in children: Current views and new hypotheses  
*Yun YF, Feng ZY, Zhang JJ*
- 364 May 2022 acute hepatitis outbreak, is there a role for COVID-19 and other viruses?  
*Elbeltagi R, Al-Beltagi M, Saeed NK, Bediwy AS, Toema O*
- 377 Challenges and recommendations when selecting empirical antibiotics in patients with cirrhosis  
*Dirchwolf M, Gomez Perdiguero G, Grech IM, Marciano S*
- 386 Emerging role of engineered exosomes in nonalcoholic fatty liver disease  
*Ding J, Xu C, Xu M, He XY, Li WN, He F*

**ORIGINAL ARTICLE**

**Basic Study**

- 393 mRNA transcriptome profiling of human hepatocellular carcinoma cells HepG2 treated with *Catharanthus roseus*-silver nanoparticles  
*Azhar NA, Abu Bakar SA, Citartan M, Ahmad NH*

**Retrospective Cohort Study**

- 410 Adherence to guideline-directed hepatocellular carcinoma screening: A single-center US experience  
*King WW, Richhart R, Culpepper T, Mota M, Banerjee D, Ismael M, Chakraborty J, Ladna M, Khan W, Ruiz N, Wilson J, Altshuler E, Clark V, Cabrera R*

**Retrospective Study**

- 419 To scan or not to scan: Use of transient elastography in an integrated health system  
*Stein L, Mittal R, Song H, Chung J, Sahota A*
- 431 Coexistent alcohol-related cirrhosis and chronic pancreatitis have a comparable phenotype to either disease alone: A comparative retrospective analysis  
*Lu M, Sun Y, Feldman R, Saul M, Althouse A, Arteel G, Yadav D*

**ABOUT COVER**

Editorial Board Member of *World Journal of Hepatology*, Raika Jamali, MD, Gastroenterologist and Hepatologist, Associate Professor, Vice President for Research, Digestive Disease Research Institute, Tehran University of Medical Sciences, Shariati Hospital, Tehran, Iran. jamalira@tums.ac.ir

**AIMS AND SCOPE**

The primary aim of *World Journal of Hepatology* (*WJH*, *World J Hepatol*) is to provide scholars and readers from various fields of hepatology with a platform to publish high-quality basic and clinical research articles and communicate their research findings online.

*WJH* mainly publishes articles reporting research results and findings obtained in the field of hepatology and covering a wide range of topics including chronic cholestatic liver diseases, cirrhosis and its complications, clinical alcoholic liver disease, drug induced liver disease autoimmune, fatty liver disease, genetic and pediatric liver diseases, hepatocellular carcinoma, hepatic stellate cells and fibrosis, liver immunology, liver regeneration, hepatic surgery, liver transplantation, biliary tract pathophysiology, non-invasive markers of liver fibrosis, viral hepatitis.

**INDEXING/ABSTRACTING**

The *WJH* is now abstracted and indexed in PubMed, PubMed Central, Emerging Sources Citation Index (Web of Science), Scopus, Reference Citation Analysis, China National Knowledge Infrastructure, China Science and Technology Journal Database, and Superstar Journals Database. The 2022 edition of Journal Citation Reports® cites the 2021 Journal Citation Indicator (JCI) for *WJH* as 0.52. The *WJH*'s CiteScore for 2021 is 3.6 and Scopus CiteScore rank 2021: Hepatology is 42/70.

**RESPONSIBLE EDITORS FOR THIS ISSUE**

Production Editor: Yi-Xuan Cai; Production Department Director: Xiang Li; Editorial Office Director: Xiang Li.

**NAME OF JOURNAL**

*World Journal of Hepatology*

**ISSN**

ISSN 1948-5182 (online)

**LAUNCH DATE**

October 31, 2009

**FREQUENCY**

Monthly

**EDITORS-IN-CHIEF**

Nikolaos Pylsopoulos, Ke-Qin Hu, Koo Jeong Kang

**EDITORIAL BOARD MEMBERS**

<https://www.wjnet.com/1948-5182/editorialboard.htm>

**PUBLICATION DATE**

March 27, 2023

**COPYRIGHT**

© 2023 Baishideng Publishing Group Inc

**INSTRUCTIONS TO AUTHORS**

<https://www.wjnet.com/bpg/gerinfo/204>

**GUIDELINES FOR ETHICS DOCUMENTS**

<https://www.wjnet.com/bpg/GerInfo/287>

**GUIDELINES FOR NON-NATIVE SPEAKERS OF ENGLISH**

<https://www.wjnet.com/bpg/gerinfo/240>

**PUBLICATION ETHICS**

<https://www.wjnet.com/bpg/GerInfo/288>

**PUBLICATION MISCONDUCT**

<https://www.wjnet.com/bpg/gerinfo/208>

**ARTICLE PROCESSING CHARGE**

<https://www.wjnet.com/bpg/gerinfo/242>

**STEPS FOR SUBMITTING MANUSCRIPTS**

<https://www.wjnet.com/bpg/GerInfo/239>

**ONLINE SUBMISSION**

<https://www.f6publishing.com>



Retrospective Study

# Coexistent alcohol-related cirrhosis and chronic pancreatitis have a comparable phenotype to either disease alone: A comparative retrospective analysis

Michael Lu, Yujie Sun, Robert Feldman, Melissa Saul, Andrew Althouse, Gavin Arteel, Dhiraj Yadav

**Specialty type:** Gastroenterology and hepatology

**Provenance and peer review:** Unsolicited article; Externally peer reviewed.

**Peer-review model:** Single blind

**Peer-review report's scientific quality classification**

Grade A (Excellent): 0  
Grade B (Very good): 0  
Grade C (Good): C, C  
Grade D (Fair): D  
Grade E (Poor): 0

**P-Reviewer:** Maslennikov R, Russia; Tantau AI, Romania

**Received:** December 7, 2022

**Peer-review started:** December 7, 2022

**First decision:** December 19, 2022

**Revised:** February 3, 2023

**Accepted:** March 9, 2023

**Article in press:** March 9, 2023

**Published online:** March 27, 2023



**Michael Lu, Yujie Sun, Melissa Saul,** Department of Medicine, University of Pittsburgh Medical Center, Pittsburgh, PA 15213, United States

**Robert Feldman, Andrew Althouse,** Department of Medicine, Center for Research on Health Care Data, Pittsburgh, PA 15213, United States

**Gavin Arteel,** Division of Gastroenterology, Hepatology, and Nutrition, University of Pittsburgh Medical Center, Pittsburgh, PA 15213, United States

**Dhiraj Yadav,** Department of Medicine, Division of Gastroenterology, Hepatology and Nutrition, University of Pittsburgh Medical Center, Pittsburgh, PA 15213, United States

**Corresponding author:** Dhiraj Yadav, MD, Full Professor, Department of Medicine, Division of Gastroenterology, Hepatology and Nutrition, University of Pittsburgh Medical Center, 200 Lothrop Street, M2, C-Wing, Pittsburgh, PA 15213, United States. [yadavd@upmc.edu](mailto:yadavd@upmc.edu)

## Abstract

### BACKGROUND

Alcohol use disorder is a prevalent disease in the United States. It is a well-demonstrated cause of recurrent and long-standing liver and pancreatic injury which can lead to alcohol-related liver cirrhosis (ALC) and chronic pancreatitis (ACP). ALC and ACP are associated with significant healthcare utilization, cost burden, and mortality. The prevalence of coexistent disease (CD) ranges widely in the literature and the intersection between ALC and ACP is inconsistently characterized. As such, the clinical profile of coexistent ALC and ACP remains poorly understood. We hypothesized that patients with CD have a worse phenotype when compared to single organ disease.

### AIM

To compare the clinical profile and outcomes of patients with CD from those with ALC or ACP Only.

### METHODS

In this retrospective comparative analysis, we reviewed international classification of disease 9/10 codes and electronic health records of adult patients with verified ALC Only ( $n = 135$ ), ACP Only ( $n = 87$ ), and CD ( $n = 133$ ) who received



care at UPMC Presbyterian-Shadyside Hospital. ALC was defined by histology, imaging or clinical evidence of cirrhosis or hepatic decompensation. ACP was defined by imaging findings of pancreatic calcifications, moderate-severe pancreatic duct dilatation, irregularity or atrophy. We compared demographics, pertinent clinical variables, healthcare utilization, and mortality for patients with CD with those who had single organ disease.

## RESULTS

Compared to CD or ACP Only, patients with ALC Only were more likely to be older, Caucasian, have higher body mass index, and Hepatitis B or C infection. CD patients (*vs* ALC Only) were less likely to have imaging evidence of cirrhosis and portal hypertension despite possessing similar MELD-Na and Child C scores at the most recent contact. CD patients (*vs* ACP Only) were less likely to have acute or recurrent acute pancreatitis, diabetes mellitus, insulin use, oral pancreatic enzyme therapy, and need for endoscopic therapy or pancreatic surgery. The number of hospitalizations in patients with CD were similar to ACP Only but significantly higher than ALC Only. The overall mortality in patients with CD was similar to ALC Only but trended to be higher than ACP Only ( $P = 0.10$ ).

## CONCLUSION

CD does not have a worse phenotype compared with single organ disease. The dominant phenotype in CD is similar to ALC Only which should be the focus in longitudinal follow-up.

**Key Words:** Alcohol; Cirrhosis; Chronic pancreatitis; Overlap; Phenotype

©The Author(s) 2023. Published by Baishideng Publishing Group Inc. All rights reserved.

**Core Tip:** Patients with coexistent alcohol-related cirrhosis and alcohol-related chronic pancreatitis do not have a worse phenotype when compared with single organ disease patients. The dominant phenotype in patients with coexistent disease (CD) in terms of overall survival and markers of advanced liver disease was similar to patients with Alcohol-related Cirrhosis Only. Coexistent disease patients also had lower prevalence of disease-related manifestations when compared with those who had single organ disease. Patients with CD may not need to be monitored at a higher degree, but the primary focus for longitudinal follow-up should be on alcohol-related cirrhosis.

**Citation:** Lu M, Sun Y, Feldman R, Saul M, Althouse A, Arteel G, Yadav D. Coexistent alcohol-related cirrhosis and chronic pancreatitis have a comparable phenotype to either disease alone: A comparative retrospective analysis. *World J Hepatol* 2023; 15(3): 431-440

**URL:** <https://www.wjgnet.com/1948-5182/full/v15/i3/431.htm>

**DOI:** <https://dx.doi.org/10.4254/wjh.v15.i3.431>

## INTRODUCTION

Alcohol use disorder (AUD) is a disease affecting over 14 million adults in the United States[1]. Long-standing alcohol use is a well-established cause of liver and pancreatic injury that can culminate in alcohol-related liver cirrhosis (ALC) and alcohol-related chronic pancreatitis (ACP)[2,3]. The complications of ALC and ACP are major causes of morbidity and mortality associated with alcohol misuse[4-6].

The liver and pancreas are developmentally related and share a number of functional similarities; they also exhibit common features of alcohol-induced injury. The quantity of alcohol misuse is the primary risk factor for developing both diseases and leads to the metabolic stress and low-grade inflammation that stimulates maladaptive fibrotic changes[7]. Susceptibility for developing ALC and/or ACP also relates to non-modifiable risk factors such as race, genetics, and environment[8-11]. ALC-related complications range from ascites and portosystemic encephalopathy to hepatorenal syndrome and hepatocellular carcinoma, and it is estimated that alcohol use accounts for 20%-36% of cirrhosis cases [12-14]. The rate of cirrhosis-related hospitalizations and annual costs have been increasing[15,16]. Comparably, the long-standing inflammatory state in chronic pancreatitis (CP) results in irreversible parenchymal destruction and dysfunction. ACP often begins with an index acute pancreatitis event that progresses to CP as dictated by the severity and number of recurrent episodes of acute pancreatitis[17]. Commonly attributed to alcohol consumption in the North American population, complications from CP include chronic pain, exocrine/endocrine insufficiency, and pancreatic adenocarcinoma[18-20] and poor quality of life[21].

Although ALC and ACP have been well-studied in isolation, patients with overlap of ALC and ACP (*i.e.*, Coexistent Disease) is inconsistently characterized in the literature. Some studies have failed to demonstrate any association between ALC and ACP[22,23] while others suggest interconnectivity between alcohol-related liver and pancreas disease. For instance, alcohol-related liver disease can lead to pancreatic exocrine insufficiency and accumulation of fatty acid ethyl esters which contributes to further progression of alcohol-related liver[24] and pancreas disease[25], while ACP can cause and exacerbate portal hypertension which worsens the complications of liver disease[26]. Furthermore, emerging data from the United States in recent years suggests that coexistent disease (CD) represent only a small fraction of patients with AUD. Although estimates of prevalence of CD in the literature range widely from 0%-75%, a meta-analysis performed by our group revealed a pooled prevalence of ACP in ALC and ALC in ACP to be 16.2% and 21.5% respectively[27].

To date, published studies have yet to define the clinical profile of patients with CD and its differences from single-organ disease. We hypothesized that patients with CD will have a more advanced phenotype and worse outcomes when compared with patients who have single organ (ALC Only or ACP Only) disease. To test this hypothesis, we performed a detailed comparative analysis of well-characterized patients with ACP Only, ALC Only, and CD who received care in a large healthcare system cohort.

## MATERIALS AND METHODS

### Study population

The study was approved by the University of Pittsburgh's Institutional Review Board. The patient pool consisted of those who were aged  $\geq 18$  years, had one or more inpatient, emergency room, and outpatient encounters at any UPMC facility from January 1, 2006 to December 31, 2017 with international classifications of diseases (ICD) versions 9 and/or 10 codes for AUD, alcohol-related liver disease or pancreatitis (Supplementary material), had 12 or more months of contact with the UPMC system, and received care at UPMC Presbyterian-Shadyside campus at some time during their care at UPMC[28]. Among these patients, we randomly identified a subset who received a diagnosis of ALC Only ( $n = 202$ ), ACP Only ( $n = 200$ ) and both ALC and ACP ( $n = 200$ ). Unlike ALC for which etiology-specific codes are routinely used in clinical practice, ICD-9 classification for pancreatitis did not include etiology-specific codes, which became available with the ICD-10 coding system. In our dataset, as only a small portion of patients received an ICD-10 diagnosis of ACP, we identified patients as ACP by the diagnosis of AUD at any time in addition to CP, as was described previously[28].

Analysis and review of the Electronic Health Records of the 602 randomly identified patients was performed by 2 authors (ML, YS) under the supervision of the senior author using pre-defined criteria to verify the diagnosis of cirrhosis and CP. Cirrhosis was defined by histologic findings, imaging evidence of cirrhosis or portal hypertension, or clinical signs of hepatic decompensation. CP was defined by imaging findings of pancreatic calcifications, moderate-severe pancreatic ductal dilation, pancreatic ductal stricture or gland atrophy. To ensure that patients with ALC Only did not have any clinical pancreatic disease, we excluded patients with a verified diagnosis of ALC who had prior acute or recurrent acute pancreatitis. Similarly, among patients with verified ACP Only, we excluded those who had prior alcohol-related hepatitis. Patients with a verified diagnosis of ALC Only, ACP Only and both ALC and ACP (CD) formed the study population.

### Data collection

For each patient with a verified diagnosis, we reviewed the Electronic Health Records to retrieve detailed information on demographics, alcohol and tobacco use, pertinent clinical information for ALC and ACP, healthcare utilization and overall survival until March 3, 2021. Information relevant to liver disease included details of verification criteria fulfilled, clinical features of portal hypertension, hepatic decompensation, history of alcohol-related hepatitis, Child-Pugh and MELD scores, need for liver transplantation, and treatments received. For CP, in addition to the verification criteria fulfilled, information was collected on clinical features of CP, laboratory tests, dual-energy X-ray absorptiometry (DEXA) scan results, and treatments for CP or its complications.

### Analytic approach and statistical analyses

We report demographic and disease-specific information for each of the three groups. Continuous variables are presented as mean  $\pm$  standard deviation or median (interquartile range), and categorical variables were reported as  $n$  (%). Statistical comparisons were made using *t*-test and Kruskal-Wallis test for continuous variables and chi-square tests for categorical variables. Survival from time of first diagnosis is reported using the Kaplan-Meier method. Cox proportional-hazards models are used to report the hazard ratio (HR) and 95% confidence intervals (CI) for patients with ALC Only *vs* ACP Only and CD *vs* ACP Only while adjusting for age at diagnosis, sex, and race. All statistical analyses were performed using R, version 4.1.3 by biomedical statisticians (RF, AA).

## RESULTS

### Study population and demographics

The final study population consisted of 355 patients with verified diagnosis - 135 with ALC Only, 87 with ACP Only, and 133 with CD. Select characteristics of these patients are presented in [Table 1](#). When compared with CD, patients with ALC Only were older at the time of study entry, had higher body mass index, were more likely to be Caucasian and more likely to have Hepatitis B and C infections. While roughly one-thirds of patients with CD or ALC Only were female, only 23% of ACP patients were female. The median duration of contact was greater than 10 years and was comparable between groups. The median number of non-elective hospital admissions for CD and ACP Only were comparable and significantly greater than patients with ALC Only. During follow-up, the number of patients who died in the CD, ALC Only, and ACP Only group was 80 (60%), 82 (61%), and 36 (41%), respectively. Survival analysis using Cox-regression after controlling for age, sex and race ([Figure 1](#)) demonstrated that the survival between ALC Only and ACP Only was similar (HR 1.22, 95%CI 0.82-1.82,  $P = 0.32$ ), while there is a trend towards lower survival in patients with CD when compared to ACP Only (HR 1.40, 95%CI 0.94-2.09,  $P = 0.10$ ).

### Comparisons between CD vs ALC Only

Select disease-specific characteristics of patients with CD and ALC Only are shown in [Table 2](#). Patients with ALC Only underwent liver biopsy more often than those with Coexistent disease (33.3% *vs* 16.5%,  $P = 0.002$ ). Patients with ALC Only were more likely to have radiographic evidence of cirrhosis (93% *vs* 76%,  $P \leq 0.001$ ) and portal hypertension (74% *vs* 59%,  $P = 0.006$ ) on imaging. Although MELD and Child-Pugh scores at most recent contact were similar among patients with CD and ALC Only, some specific clinical features differed between the two groups. Specifically, while patients with CD were more likely to have a history of spontaneous bacterial peritonitis, those with ALC Only were more likely to have esophageal varices, need for variceal banding, treatment with beta blockers, and hepatocellular carcinoma. Other features of decompensated liver disease (*e.g.*, ascites) or treatments (*e.g.*, TIPS) were similar between the two groups.

### Comparisons between CD and ACP Only

Morphologic appearance of the pancreas was generally similar among patients with CD and ACP Only ([Table 3](#)). In regards to the clinical manifestations, patients with ACP Only were more likely to have a history of acute or recurrent acute pancreatitis, receive pancreatic enzyme replacement therapy, ERCP, and pancreatic surgery than patients with CD. Patients with ACP Only were also more likely to have endocrine dysfunction, as characterized by a higher prevalence of diabetes, need for insulin therapy, and poor glycemic control as reflected by a higher hemoglobin A1c level at the time of last contact. Other clinical features or therapies were similar between the two groups.

## DISCUSSION

As the largest study of its kind, this work endeavors to further characterize patients at the intersection of ALC and ACP. Our retrospective analysis of patients with a verified diagnosis of ALC Only, ACP Only or CD reveals that during a similar period of observation, although patients with CD had differences in some disease-related manifestations, they did not have worse phenotype than counterparts with single organ disease. Furthermore, our findings suggest that patients with CD potentially need not be monitored at a higher degree, but the primary focus should be on the management of ALC.

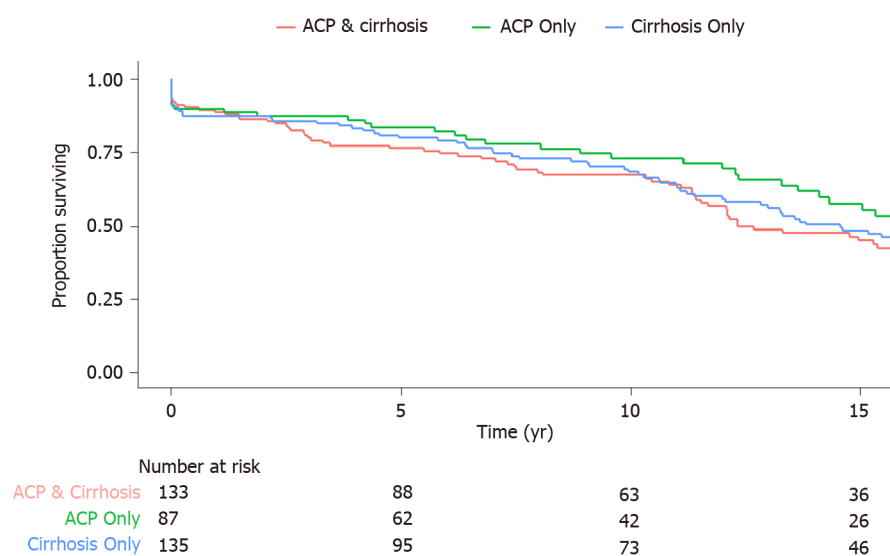
Patients included in this study represent the most severe phenotypes of alcohol-related liver or pancreas disease who received care at a tertiary care center during the course of their illness. Among them, we observed that the dominant phenotype in patients with CD to be similar to that of ALC, specifically the two most important indicators of outcomes (*i.e.* overall survival and MELD-Na and Child C scores in patients with CD were similar to patients with ALC Only). This suggests that patients with alcohol-related pancreatic disease who are identified to have alcohol-related liver disease need to be assessed and monitored for early identification of cirrhosis or cirrhosis-related complications so they can be managed in a timely manner.

Patients with CD shared similar demographic attributes with those of single organ disease such as the sex distribution of ALC Only patients as well as age, racial distribution and body mass index (BMI) of ACP Only patients. Of note, although our prior study showed that the prevalence of alcohol-related pancreatic disease in those with alcohol-related liver disease was 2-4 folds higher in blacks compared to other races[28], the racial difference was not present in this study. This may be related to the inclusion of patients with the most severe phenotypes in this study as noted above, which may not be representative of the full spectrum of alcohol-related liver and pancreas disease.

When comparing patients with CD with those who had single organ disease, we observed some demographic differences. For instance, patients with CD were younger than those with ALC Only but similar to patients with ACP Only. Although our retrospective study was not designed to evaluate this

**Table 1** Select demographics and characteristics in the study population, *n* (%)

	CD ( <i>n</i> = 133)	ALC only ( <i>n</i> = 135)	ACP only ( <i>n</i> = 87)	<i>P</i> value (CD vs ALC only)	<i>P</i> value (CD vs ACP only)
Age (at study entry), yr – mean ± SD	51.7 ± 12.0	54.6 ± 9.8	51.0 ± 12.3	<b>0.029</b>	0.684
Female	49 (38)	42 (31)	20 (23)	0.322	<b>0.03</b>
Race				<b>0.015</b>	0.52
Caucasian	97 (73)	113 (84)	61 (70)		
Black	30 (23)	22 (16)	24 (28)		
Other	6 (5)	0 (0)	2 (2)		
Body mass index <sup>a</sup> – mean ± SD	24.2 ± 7.0	27.8 ± 6.5	23.3 ± 5.4	<b>&lt; 0.001</b>	0.281
Tobacco use	117 (88)	109 (81)	81 (93)	0.104	0.127
Smoking (one or more packs per day)	31 (23)	23 (17)	24 (28)	0.29	0.392
Alcohol use (duration), yr – mean ± SD	26.7 ± 16.0	29.4 ± 13.8	23 ± 18.4	0.595	0.762
Hepatitis B Infection	7 (5)	17 (13)	2 (2)	<b>0.036</b>	0.278
Hepatitis C Infection	31 (23)	58 (43)	14 (16)	<b>0.001</b>	0.194
Non-Elective Hospital Admissions <sup>b</sup> – median (IQR)	4 (1 - 12)	3 (0 - 7)	4 (1 - 8)	<b>0.007</b>	0.57
Duration of observation, yr – mean ± SD	10.8 ± 7.9	12.4 ± 7.6	11.8 ± 7.6	0.107	0.36

<sup>a</sup>At most recent contact.<sup>b</sup>Compared using Kruskal-Wallis test. ACP: Alcohol-related chronic pancreatitis; ALC: alcohol-related liver cirrhosis; CD: Coexistent disease; IQR: Interquartile range.

DOI: 10.4254/wjh.v15.i3.431 Copyright ©The Author(s) 2023.

**Figure 1** Survival analysis for the three clinical groups from time of first diagnosis to the last contact. ACP: Alcohol-related chronic pancreatitis.

systematically, a potential explanation is an earlier identification of CP based on clinical symptoms and/or imaging studies in patients with alcohol-related liver disease. Similarly, patients with CD had BMI similar to ACP but lower than patients with ALC likely related to malabsorption. The alternative explanation in a subset of patients with ALC may be fluid retention related to portal hypertension.

Other than spontaneous bacterial peritonitis, patients with CD in general had a lower burden of disease-related manifestations when compared with patients who had ALC Only and ACP Only. The reason for this is unclear but a possible explanation may be the recognition of disease overlap at an earlier stage, *e.g.* alcohol-related liver disease in patients with ACP or alcohol-related pancreatitis in patients with ALC. In terms of healthcare utilization, the burden of non-elective admissions in patients



**Table 2** Select disease-specific characteristics in patients with coexistent disease vs alcohol-related liver cirrhosis only, *n* (%)

Characteristics present	CD ( <i>n</i> = 133)	ALC only ( <i>n</i> = 135)	<i>P</i> value
Verification criteria fulfilled			
Liver biopsy performed	22 (17)	45 (33)	<b>0.002</b>
Cirrhosis on biopsy	13 (59)	22 (49)	0.349
Cirrhosis on imaging <sup>b</sup>	101 (76)	126 (93)	<b>&lt; 0.001</b>
Portal hypertension features on imaging	78 (59)	100 (74)	<b>0.006</b>
Alcohol-Related hepatitis	48 (36)	34 (25)	0.052
MELD score <sup>a</sup>	19.3 ± 8.98	18.7 ± 8.89	0.614
Child-Pugh score <sup>a</sup>			0.69
A	41 (31)	48 (36)	
B	49 (39)	48 (36)	
C	43 (32)	39 (29)	
Complications of portal hypertension			
Esophageal varices on EGD	46 (35)	68 (50)	<b>&lt; 0.001</b>
Esophageal variceal hemorrhage	11 (8)	17 (13)	0.247
Ascites	96 (72)	83 (62)	0.063
Spontaneous bacterial peritonitis	22 (17)	9 (7)	<b>0.011</b>
Portosystemic encephalopathy	62 (47)	68 (50)	0.539
Hepatocellular carcinoma	6 (5)	23 (17)	<b>0.001</b>
End-stage renal disease requiring CRRT/HD	15 (11)	13 (10)	0.644
Treatment of portal hypertension/complications			
Esophageal variceal banding	11 (8)	22 (16)	<b>0.046</b>
TIPS	3 (2)	8 (6)	0.13
Beta-blocker use <sup>a</sup>	18 (14)	38 (28)	<b>0.004</b>
Diuretic use <sup>a</sup>	57 (43)	65 (48)	0.415
Large volume paracentesis	29 (22)	39 (29)	0.183
Antibiotics for SBP prophylaxis <sup>a</sup>	9 (7)	11 (8)	0.68
Lactulose and/or rifaximin use <sup>a</sup>	50 (38)	55 (41)	0.632
Transplant evaluation	14 (11)	19 (14)	0.402
Liver transplantation	3 (2)	10 (7)	<b>0.05</b>

<sup>a</sup>At most recent contact.<sup>b</sup>Ultrasound, computed tomography scan magnetic resonance imaging, elastography. ALC: Alcohol-related liver cirrhosis; CD: Coexistent disease; CRRT: Continuous renal replacement therapy; HD: Homeodomain; EGD: Esophagogastroduodenoscopy; SBP: Spontaneous bacterial peritonitis.

with CD mirrored those of ACP Only patients.

Strengths of our study include the largest sample size to evaluate the phenotype of patients with CD, rigorous review of medical records to verify diagnosis and data collection by review of medical records and a long observation period which ensures capture of clinical events. Our study also has limitations. Being a retrospective study from a single-center tertiary academic medical center may have resulted in our study population to be of higher complexity and limit generalizability of our findings. Our study population includes patients with concomitant Hepatitis B and C infections. While the prevalence of these infections rates represent the traits of our underlying clinical population, hepatitis B and C infections may attribute to or confound the severity of hepatic disease. Although our review of records within the UPMC system was complimented by availability of medical records from other institutions whenever possible through Care Everywhere, there is a possibility of underestimation of clinical events. Finally, clinical events and demographics have the potential to be misclassified in the dataset due to missing or incomplete information.

**Table 3** Select disease-specific characteristics in patients with coexistent disease vs alcohol-related chronic pancreatitis only, *n* (%)

Characteristics present	CD ( <i>n</i> = 133)	Only ACP ( <i>n</i> = 87)	<i>P</i> value
<b>Verification criteria fulfilled on imaging</b>			
Pancreatic calcifications	88 (66)	64 (74)	0.246
Moderate-severe ductal dilatation	38 (29)	30 (35)	0.354
Moderate-severe ductal structure	18 (14)	14 (16)	0.599
Any gland atrophy	77 (58)	46 (53)	0.463
Moderate-severe gland atrophy	10 (13)	7 (15)	0.88
Gland atrophy not reported	67 (87)	37 (80)	0.25
Diagnosis based on EUS alone	6 (5)	5 (6)	0.681
<b>Chronic pancreatitis features</b>			
Acute pancreatitis	101 (76)	74 (85)	<b>0.009</b>
Age at first pancreatitis, yr – mean ± SD	48.1 ± 15.2	41.5 ± 10.6	0.112
Recurrent acute pancreatitis	61 (46)	53 (61)	<b>0.023</b>
Chronic abdominal pain <sup>a</sup>	56 (42)	44 (51)	0.189
Pancreatic pseudocyst	29 (22)	22 (25)	0.549
Diabetes mellitus	54 (41)	50 (58)	<b>0.011</b>
Exocrine pancreatic insufficiency (Fecal elastase < 100 and/or steatorrhea)	24 (18)	14 (16)	0.708
Pancreatic adenocarcinoma	2 (2)	4 (5)	0.163
<b>Treatment of chronic pancreatitis/complications</b>			
Oral anti-diabetic therapy <sup>a</sup>	11 (20)	13 (26)	0.113
Insulin therapy <sup>a</sup>	46 (85)	37 (74)	0.209
Pancreatic enzymatic replacement therapy <sup>a</sup>	35 (26)	39 (45)	<b>0.004</b>
Chronic opiate therapy <sup>a</sup>	59 (44)	33 (38)	0.381
Treatment by chronic pain specialist	20 (15)	20 (23)	0.124
Celiac plexus block	0 (0)	2 (2)	0.077
ERCP	41 (31)	43 (49)	<b>0.004</b>
Pseudocyst drainage (endoscopic/surgical)	18 (14)	13 (15)	0.743
Pancreatic surgery	13 (10)	19 (22)	<b>0.012</b>
<b>Pertinent test results</b>			
Hemoglobin A1C <sup>a</sup> – mean ± SD	6.4 ± 2.3	7.3 ± 2.1	<b>0.01</b>
Vitamin D deficiency	48 (36)	25 (29)	0.104
DEXA scan performed	28 (21)	19 (22)	0.855
Osteopenia on DEXA scan	12 (43)	10 (53)	0.51
Osteopenia on DEXA scan	8 (29)	5 (26)	0.865

<sup>a</sup>At most recent contact. ACP: Alcohol-related chronic pancreatitis; CD: Coexistent disease; ERCP: Endoscopic retrograde cholangiopancreatography; DEXA: Dual-energy-x-ray-absorptiometry.

## CONCLUSION

Contrary to our working hypothesis, patients with Coexistent ALC and ACP did not have a worse phenotype when compared with single organ disease patients. The dominant phenotype in patients with CD in terms of overall survival and markers of advanced liver disease was similar to patients with ALC Only. CD patients also had lower prevalence of disease-related manifestations when compared with those who had single organ disease. Our findings suggest that patients with CD may not need to be monitored at a higher degree, but the primary focus for longitudinal follow-up should be on ALC.

## ARTICLE HIGHLIGHTS

### Research background

Heavy alcohol use is a known cause of liver and pancreatic injury that can lead to alcohol-related liver cirrhosis (ALC) and alcohol-related chronic pancreatitis (ACP). These diseases are associated with significant morbidity, mortality, and healthcare utilization and spending.

### Research motivation

While both ALC and ACP are well-characterized, there is a subset of patient with both ALC and ACP (coexistent disease) that is poorly understood.

### Research objectives

We aim to characterize the clinical profile of patients with coexistent disease (CD) and its differences from those with ALC Only or ACP Only.

### Research methods

The study population consisted of adult patient encounters at UPMC facilities from 2006 to 2017 with more than 12 mo of contact. We identified subsets of patients with ACP Only, ALC Only, and CD based on international classifications of diseases codes and reviewed the Electronic Health Record to verify diagnoses and abstract clinical information. Statistical comparisons were made using t-test and Kruskal-Wallis test for continuous variables and chi-square tests for categorical variables. Survival from time of first diagnosis is reported using the Kaplan-Meier method. Cox proportional-hazards models are used to report the hazard ratio and 95% confidence intervals while adjusting for age at diagnosis, sex, and race.

### Research results

The median duration of contact was greater than 10 years and was comparable between groups. The median number of non-elective hospital admissions for CD and ACP Only were comparable and significantly greater than patients with ALC Only. The number of patients who died in follow-up in CD, ALC Only, and ACP Only groups was 80 (60%), 82 (61%), and 36 (41%). Using Cox regression, survival was similar between ALC Only *vs* ACP Only and CD *vs* ACP Only. Despite comparable MELD-Na and Child-Pugh scores between CD and ALC Only patients, those with ALC Only were more likely to have esophageal varices, need for variceal banding, treatment with beta blockers, and hepatocellular carcinoma. Patients with ACP Only were more likely to have acute pancreatitis, need for endoscopic or surgical intervention, and endocrine dysfunction.

### Research conclusions

Patients with CD did not have a worse phenotype compared to patients with ACP Only or ALC Only.

### Research perspectives

As the largest study of its kind, this work hopes to characterize patients at the intersection of ALC and ACP. Given our findings, we observed that the dominant phenotype in CD is similar to that of ALC Only, suggesting that patients with alcohol-related pancreatic disease who are newly identified to have alcohol-related liver disease should be closely monitored for liver cirrhosis and its complications.

## ACKNOWLEDGEMENTS

The authors thank the Enhancing MEntoring to Improve Research in GastroEnterology (EMERGE) Program of the Division of Gastroenterology, Hepatology and Nutrition, University of Pittsburgh for supporting this project.

## FOOTNOTES

**Author contributions:** Yadav D designed the research, contributed to the analysis and wrote the paper; Lu M, Sun Y performed the research, contributed to the analysis and wrote the paper; Arteel G contributed to the design of the study and provided clinical advice; Saul M retrieved patient information from UPMC databases, Feldman R, Althouse A performed the research and statistical analysis. All authors reviewed and approved the final version of the manuscript.

**Institutional review board statement:** This study was reviewed and approved by the Institutional Review Board of the University of Pittsburgh (STUDY 20100015).

**Informed consent statement:** We obtained a waiver of informed consent since the research represents no more than minimal risk of harm to subjects and involves no procedures for which written consent is normally required outside of the research context.

**Conflict-of-interest statement:** All the authors declare that they have no conflict of interest.

**Data sharing statement:** The dataset for this study is available from the corresponding author on reasonable request and fulfilment of regulatory requirements.

**Open-Access:** This article is an open-access article that was selected by an in-house editor and fully peer-reviewed by external reviewers. It is distributed in accordance with the Creative Commons Attribution NonCommercial (CC BY-NC 4.0) license, which permits others to distribute, remix, adapt, build upon this work non-commercially, and license their derivative works on different terms, provided the original work is properly cited and the use is non-commercial. See: <https://creativecommons.org/licenses/by-nc/4.0/>

**Country/Territory of origin:** United States

**ORCID number:** Michael Lu 0000-0001-7878-4675; Yujie Sun 0000-0001-9476-1334; Robert Feldman 0000-0002-0222-3684; Melissa Saul 0000-0002-6712-5102; Andrew Althouse 0000-0002-8654-5014; Gavin Arteel 0000-0002-2253-5984; Dhiraj Yadav 0000-0001-7078-9893.

**S-Editor:** Liu JH

**L-Editor:** A

**P-Editor:** Liu JH

## REFERENCES

- 1 **2019 National Survey on Drug Use and Health.** Table 5.4A—Alcohol Use Disorder in Past Year Among Persons Aged 12 or Older, by Age Group and Demographic Characteristics: Numbers in Thousands, 2018 and 2019. Substance Abuse and Mental Health Services Administration (SAMHSA) 2019 [DOI: [10.1037/e501902006-001](https://doi.org/10.1037/e501902006-001)]
- 2 **Rehm J,** Taylor B, Mohapatra S, Irving H, Baliunas D, Patra J, Roerecke M. Alcohol as a risk factor for liver cirrhosis: a systematic review and meta-analysis. *Drug Alcohol Rev* 2010; **29**: 437-445 [PMID: [20636661](https://pubmed.ncbi.nlm.nih.gov/20636661/) DOI: [10.1111/j.1465-3362.2009.00153.x](https://doi.org/10.1111/j.1465-3362.2009.00153.x)]
- 3 **Samokhvalov AV,** Rehm J, Roerecke M. Alcohol Consumption as a Risk Factor for Acute and Chronic Pancreatitis: A Systematic Review and a Series of Meta-analyses. *EBioMedicine* 2015; **2**: 1996-2002 [PMID: [26844279](https://pubmed.ncbi.nlm.nih.gov/26844279/) DOI: [10.1016/j.ebiom.2015.11.023](https://doi.org/10.1016/j.ebiom.2015.11.023)]
- 4 **Yadav D,** Timmons L, Benson JT, Dierkhising RA, Chari ST. Incidence, prevalence, and survival of chronic pancreatitis: a population-based study. *Am J Gastroenterol* 2011; **106**: 2192-2199 [PMID: [21946280](https://pubmed.ncbi.nlm.nih.gov/21946280/) DOI: [10.1038/ajg.2011.328](https://doi.org/10.1038/ajg.2011.328)]
- 5 **Nøjgaard C,** Bendtsen F, Becker U, Andersen JR, Holst C, Matzen P. Danish patients with chronic pancreatitis have a four-fold higher mortality rate than the Danish population. *Clin Gastroenterol Hepatol* 2010; **8**: 384-390 [PMID: [20036762](https://pubmed.ncbi.nlm.nih.gov/20036762/) DOI: [10.1016/j.cgh.2009.12.016](https://doi.org/10.1016/j.cgh.2009.12.016)]
- 6 **Julien J,** Ayer T, Bethea ED, Tapper EB, Chhatwal J. Projected prevalence and mortality associated with alcohol-related liver disease in the USA, 2019-40: a modelling study. *Lancet Public Health* 2020; **5**: e316-e323 [PMID: [32504584](https://pubmed.ncbi.nlm.nih.gov/32504584/) DOI: [10.1016/S2468-2667\(20\)30062-1](https://doi.org/10.1016/S2468-2667(20)30062-1)]
- 7 **Seitz HK,** Bataller R, Cortez-Pinto H, Gao B, Gual A, Lackner C, Mathurin P, Mueller S, Szabo G, Tsukamoto H. Alcoholic liver disease. *Nat Rev Dis Primers* 2018; **4**: 16 [PMID: [30115921](https://pubmed.ncbi.nlm.nih.gov/30115921/) DOI: [10.1038/s41572-018-0014-7](https://doi.org/10.1038/s41572-018-0014-7)]
- 8 **Dam MK,** Flensburg-Madsen T, Eliassen M, Becker U, Tolstrup JS. Smoking and risk of liver cirrhosis: a population-based cohort study. *Scand J Gastroenterol* 2013; **48**: 585-591 [PMID: [23506154](https://pubmed.ncbi.nlm.nih.gov/23506154/) DOI: [10.3109/00365521.2013.777469](https://doi.org/10.3109/00365521.2013.777469)]
- 9 **Wilcox CM,** Sandhu BS, Singh V, Gelrud A, Abberbock JN, Sherman S, Cote GA, Al-Kaade S, Anderson MA, Gardner TB, Lewis MD, Forsmark CE, Guda NM, Romagnuolo J, Baillie J, Amann ST, Muniraj T, Tang G, Conwell DL, Banks PA, Brand RE, Slivka A, Whitcomb D, Yadav D. Racial Differences in the Clinical Profile, Causes, and Outcome of Chronic Pancreatitis. *Am J Gastroenterol* 2016; **111**: 1488-1496 [PMID: [27527745](https://pubmed.ncbi.nlm.nih.gov/27527745/) DOI: [10.1038/ajg.2016.316](https://doi.org/10.1038/ajg.2016.316)]
- 10 **Whitcomb DC,** LaRusch J, Krasinskas AM, Klei L, Smith JP, Brand RE, Neoptolemos JP, Lerch MM, Tector M, Sandhu BS, Guda NM, Orlichenko L; Alzheimer's Disease Genetics Consortium, Alkaade S, Amann ST, Anderson MA, Baillie J, Banks PA, Conwell D, Cote GA, Cotton PB, DiSario J, Farrer LA, Forsmark CE, Johnstone M, Gardner TB, Gelrud A, Greenhalf W, Haines JL, Hartman DJ, Hawes RA, Lawrence C, Lewis M, Mayerle J, Mayeux R, Melhem NM, Money ME, Muniraj T, Papachristou GI, Pericak-Vance MA, Romagnuolo J, Schellenberg GD, Sherman S, Simon P, Singh VP, Slivka A, Stolz D, Sutton R, Weiss FU, Wilcox CM, Zarnescu NO, Wisniewski SR, O'Connell MR, Kienholz ML, Roeder K, Barmada MM, Yadav D, Devlin B. Common genetic variants in the CLDN2 and PRSS1-PRSS2 loci alter risk for alcohol-related and sporadic pancreatitis. *Nat Genet* 2012; **44**: 1349-1354 [PMID: [23143602](https://pubmed.ncbi.nlm.nih.gov/23143602/) DOI: [10.1038/ng.2466](https://doi.org/10.1038/ng.2466)]
- 11 **Buch S,** Stickel F, Trépo E, Way M, Herrmann A, Nischalke HD, Brosch M, Rosendahl J, Berg T, Ridinger M, Rietschel M, McQuillin A, Frank J, Kiefer F, Schreiber S, Lieb W, Soyka M, Semmo N, Aigner E, Datz C, Schmelz R, Brückner S, Zeissig S, Stephan AM, Wodarz N, Devière J, Clumeck N, Sarrazin C, Lammert F, Gustot T, Deltenre P, Völzke H, Lerch MM, Mayerle J, Eyer F, Schafmayer C, Cichon S, Nöthen MM, Nothnagel M, Ellinghaus D, Huse K, Franke A, Zopf S, Hellerbrand C, Moreno C, Franchimont D, Morgan MY, Hampe J. A genome-wide association study confirms PNPLA3



- and identifies TM6SF2 and MBOAT7 as risk loci for alcohol-related cirrhosis. *Nat Genet* 2015; **47**: 1443-1448 [PMID: 26482880 DOI: 10.1038/ng.3417]
- 12 **Mellinger JL**, Shedden K, Winder GS, Tapper E, Adams M, Fontana RJ, Volk ML, Blow FC, Lok ASF. The high burden of alcoholic cirrhosis in privately insured persons in the United States. *Hepatology* 2018; **68**: 872-882 [PMID: 29579356 DOI: 10.1002/hep.29887]
- 13 **Wong T**, Dang K, Ladhani S, Singal AK, Wong RJ. Prevalence of Alcoholic Fatty Liver Disease Among Adults in the United States, 2001-2016. *JAMA* 2019; **321**: 1723-1725 [PMID: 31063562 DOI: 10.1001/jama.2019.2276]
- 14 **Scaglione S**, Kliethermes S, Cao G, Shoham D, Durazo R, Luke A, Volk ML. The Epidemiology of Cirrhosis in the United States: A Population-based Study. *J Clin Gastroenterol* 2015; **49**: 690-696 [PMID: 25291348 DOI: 10.1097/MCG.0000000000000208]
- 15 **Asrani SK**, Hall L, Hagan M, Sharma S, Yerramaneni S, Trotter J, Talwalkar J, Kanwal F. Trends in Chronic Liver Disease-Related Hospitalizations: A Population-Based Study. *Am J Gastroenterol* 2019; **114**: 98-106 [PMID: 30335543 DOI: 10.1038/s41395-018-0365-4]
- 16 **Stepanova M**, De Avila L, Afendy M, Younossi I, Pham H, Cable R, Younossi ZM. Direct and Indirect Economic Burden of Chronic Liver Disease in the United States. *Clin Gastroenterol Hepatol* 2017; **15**: 759-766.e5 [PMID: 27464590 DOI: 10.1016/j.cgh.2016.07.020]
- 17 **Sankaran SJ**, Xiao AY, Wu LM, Windsor JA, Forsmark CE, Petrov MS. Frequency of progression from acute to chronic pancreatitis and risk factors: a meta-analysis. *Gastroenterology* 2015; **149**: 1490-1500.e1 [PMID: 26299411 DOI: 10.1053/j.gastro.2015.07.066]
- 18 **Vipperla K**, Kanakis A, Slivka A, Althouse AD, Brand RE, Phillips AE, Chennat J, Papachristou GI, Lee KK, Zureikat AH, Whitcomb DC, Yadav D. Natural course of pain in chronic pancreatitis is independent of disease duration. *Pancreatol* 2021; **21**: 649-657 [PMID: 33674197 DOI: 10.1016/j.pan.2021.01.020]
- 19 **Conwell DL**, Banks PA, Sandhu BS, Sherman S, Al-Kaade S, Gardner TB, Anderson MA, Wilcox CM, Lewis MD, Muniraj T, Forsmark CE, Cote GA, Guda NM, Tian Y, Romagnuolo J, Wisniewski SR, Brand R, Gelrud A, Slivka A, Whitcomb DC, Yadav D. Validation of Demographics, Etiology, and Risk Factors for Chronic Pancreatitis in the USA: A Report of the North American Pancreas Study (NAPS) Group. *Dig Dis Sci* 2017; **62**: 2133-2140 [PMID: 28600657 DOI: 10.1007/s10620-017-4621-z]
- 20 **Gandhi S**, de la Fuente J, Murad MH, Majumder S. Chronic Pancreatitis Is a Risk Factor for Pancreatic Cancer, and Incidence Increases With Duration of Disease: A Systematic Review and Meta-analysis. *Clin Transl Gastroenterol* 2022; **13**: e00463 [PMID: 35142721 DOI: 10.14309/ctg.0000000000000463]
- 21 **Machicado JD**, Amann ST, Anderson MA, Abberbock J, Sherman S, Conwell DL, Cote GA, Singh VK, Lewis MD, Alkaade S, Sandhu BS, Guda NM, Muniraj T, Tang G, Baillie J, Brand RE, Gardner TB, Gelrud A, Forsmark CE, Banks PA, Slivka A, Wilcox CM, Whitcomb DC, Yadav D. Quality of Life in Chronic Pancreatitis is Determined by Constant Pain, Disability/Unemployment, Current Smoking, and Associated Co-Morbidities. *Am J Gastroenterol* 2017; **112**: 633-642 [PMID: 28244497 DOI: 10.1038/ajg.2017.42]
- 22 **Aparisi L**, Sabater L, Del-Olmo J, Sastre J, Serra MA, Campello R, Bautista D, Wassel A, Rodrigo JM. Does an association exist between chronic pancreatitis and liver cirrhosis in alcoholic subjects? *World J Gastroenterol* 2008; **14**: 6171-6179 [PMID: 18985807 DOI: 10.3748/wjg.14.6171]
- 23 **Nakamura Y**, Kobayashi Y, Ishikawa A, Maruyama K, Higuchi S. Severe chronic pancreatitis and severe liver cirrhosis have different frequencies and are independent risk factors in male Japanese alcoholics. *J Gastroenterol* 2004; **39**: 879-887 [PMID: 15565408 DOI: 10.1007/s00535-004-1405-y]
- 24 **Aoufi Rabih S**, García Agudo R, Legaz Huidobro ML, Ynfante Ferrús M, González Carro P, Pérez Roldán F, Ruiz Carrillo F, Tenías Burillo JM. Exocrine pancreatic insufficiency and chronic pancreatitis in chronic alcoholic liver disease: coincidence or shared toxicity? *Pancreas* 2014; **43**: 730-734 [PMID: 24713840 DOI: 10.1097/MPA.0000000000000085]
- 25 **Rasineni K**, Srinivasan MP, Balamurugan AN, Kaphalia BS, Wang S, Ding WX, Pandol SJ, Lugea A, Simon L, Molina PE, Gao P, Casey CA, Osna NA, Kharbanda KK. Recent Advances in Understanding the Complexity of Alcohol-Induced Pancreatic Dysfunction and Pancreatitis Development. *Biomolecules* 2020; **10** [PMID: 32349207 DOI: 10.3390/biom10050669]
- 26 **Li H**, Yang Z, Tian F. Clinical Characteristics and Risk Factors for Sinistral Portal Hypertension Associated with Moderate and Severe Acute Pancreatitis: A Seven-Year Single-Center Retrospective Study. *Med Sci Monit* 2019; **25**: 5969-5976 [PMID: 31400275 DOI: 10.12659/MSM.916192]
- 27 **Singhvi A**, Abromitis R, Althouse AD, Bataller R, Arteel GE, Yadav D. Coexistence of alcohol-related pancreatitis and alcohol-related liver disease: A systematic review and meta-analysis. *Pancreatol* 2020; **20**: 1069-1077 [PMID: 32800649 DOI: 10.1016/j.pan.2020.07.412]
- 28 **Arteel GE**, Singhvi A, Feldman R, Althouse AD, Bataller R, Saul M, Yadav D. Coexistent Alcohol-Related Liver Disease and Alcohol-Related Pancreatitis: Analysis of a Large Health Care System Cohort. *Dig Dis Sci* 2022; **67**: 2543-2551 [PMID: 33961195 DOI: 10.1007/s10620-021-07010-5]



Published by **Baishideng Publishing Group Inc**  
7041 Koll Center Parkway, Suite 160, Pleasanton, CA 94566, USA

**Telephone:** +1-925-3991568

**E-mail:** [bpgoffice@wjgnet.com](mailto:bpgoffice@wjgnet.com)

**Help Desk:** <https://www.f6publishing.com/helpdesk>

<https://www.wjgnet.com>

