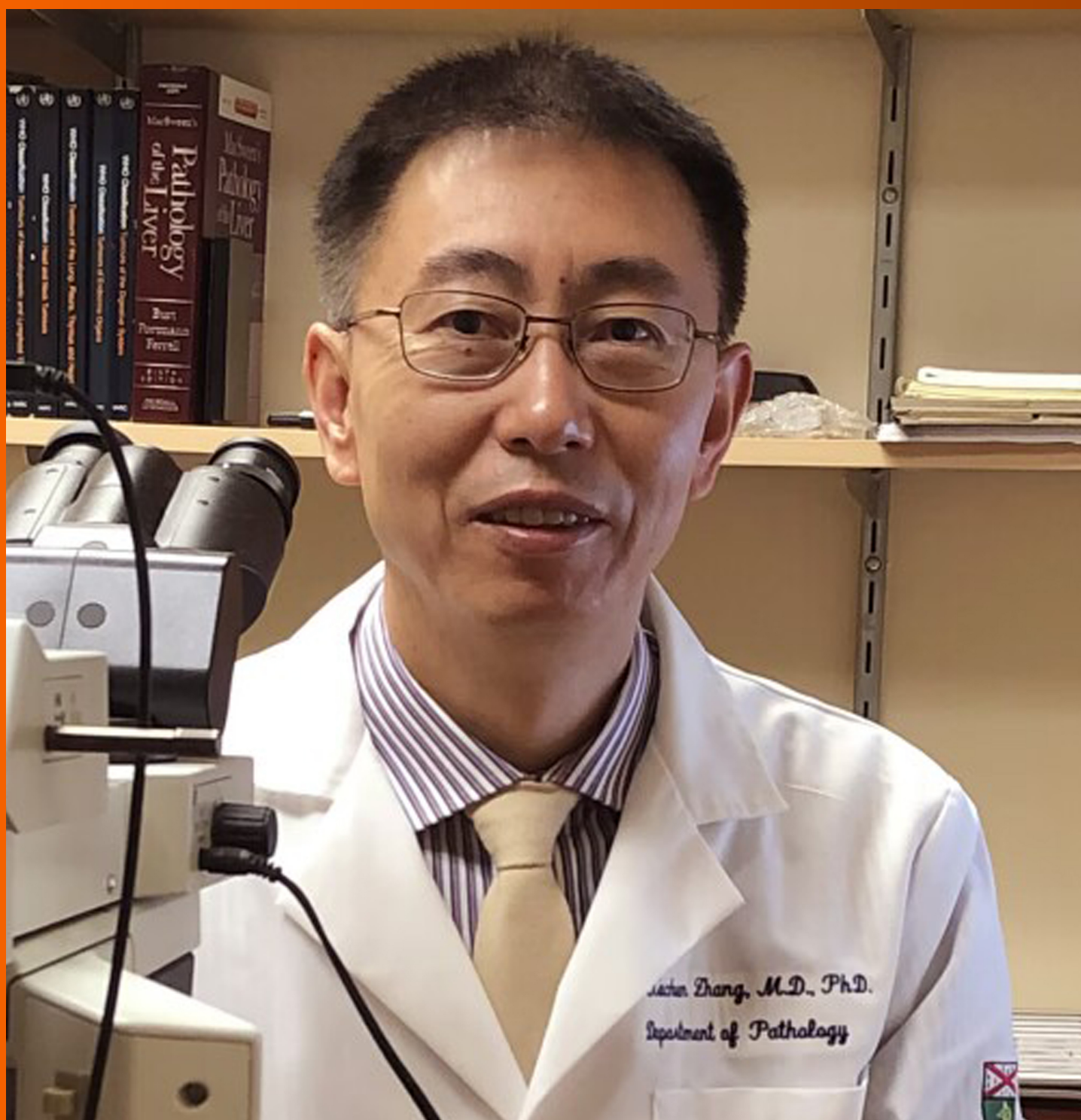


# World Journal of *Hepatology*

*World J Hepatol* 2023 July 27; 15(7): 867-938



**REVIEW**

- 867 Gut microbiome and metabolic-associated fatty liver disease: Current status and potential applications  
*Guo GJ, Yao F, Lu WP, Xu HM*
- 883 Shifting perspectives in liver diseases after kidney transplantation  
*Kosuta I, Ostojic A, Vujaklija Brajkovic A, Babel J, Simunov B, Sremac M, Mrzljak A*

**MINIREVIEWS**

- 897 Solid-Tubulocystic carcinoma: A new variant of intrahepatic cholangiocarcinoma  
*González IA, Luo W, Zhang X*

**ORIGINAL ARTICLE**

**Case Control Study**

- 904 Liver stiffness in pregnant women with intrahepatic cholestasis of pregnancy: A case control study  
*Nees J, Ammon FJ, Mueller J, Fluhr H, Mueller S*

**Observational Study**

- 914 Evaluation of the nutritional status of patients with liver cirrhosis  
*Janota B, Krupowicz A, Noras K, Janczewska E*

**SYSTEMATIC REVIEWS**

- 925 Associations between irritable bowel syndrome and non-alcoholic fatty liver disease: A systematic review  
*Ng JJJ, Loo WM, Siah KTH*

**ABOUT COVER**

Editorial Board Member of *World Journal of Hepatology*, Xuchen Zhang, MD, PhD, Professor, Department of Pathology, Yale University School of Medicine, New Haven, CT 06520, United States. xuchen.zhang@yale.edu

**AIMS AND SCOPE**

The primary aim of *World Journal of Hepatology* (WJH, *World J Hepatol*) is to provide scholars and readers from various fields of hepatology with a platform to publish high-quality basic and clinical research articles and communicate their research findings online.

WJH mainly publishes articles reporting research results and findings obtained in the field of hepatology and covering a wide range of topics including chronic cholestatic liver diseases, cirrhosis and its complications, clinical alcoholic liver disease, drug induced liver disease autoimmune, fatty liver disease, genetic and pediatric liver diseases, hepatocellular carcinoma, hepatic stellate cells and fibrosis, liver immunology, liver regeneration, hepatic surgery, liver transplantation, biliary tract pathophysiology, non-invasive markers of liver fibrosis, viral hepatitis.

**INDEXING/ABSTRACTING**

The WJH is now abstracted and indexed in PubMed, PubMed Central, Emerging Sources Citation Index (Web of Science), Scopus, Reference Citation Analysis, China National Knowledge Infrastructure, China Science and Technology Journal Database, and Superstar Journals Database. The 2023 Edition of Journal Citation Reports® cites the 2022 impact factor (IF) for WJH as 2.4; IF without journal self cites: 2.3; 5-year IF: 3.0; Journal Citation Indicator: 0.47. The WJH's CiteScore for 2022 is 3.6 and Scopus CiteScore rank 2022: Hepatology is 42/70.

**RESPONSIBLE EDITORS FOR THIS ISSUE**

Production Editor: Yi-Xuan Cai, Production Department Director: Xiang Li, Editorial Office Director: Xiang Li.

**NAME OF JOURNAL**

*World Journal of Hepatology*

**ISSN**

ISSN 1948-5182 (online)

**LAUNCH DATE**

October 31, 2009

**FREQUENCY**

Monthly

**EDITORS-IN-CHIEF**

Nikolaos Pyrsopoulos, Ke-Qin Hu, Koo Jeong Kang

**EDITORIAL BOARD MEMBERS**

<https://www.wjnet.com/1948-5182/editorialboard.htm>

**PUBLICATION DATE**

July 27, 2023

**COPYRIGHT**

© 2023 Baishideng Publishing Group Inc

**INSTRUCTIONS TO AUTHORS**

<https://www.wjnet.com/bpg/gerinfo/204>

**GUIDELINES FOR ETHICS DOCUMENTS**

<https://www.wjnet.com/bpg/GerInfo/287>

**GUIDELINES FOR NON-NATIVE SPEAKERS OF ENGLISH**

<https://www.wjnet.com/bpg/gerinfo/240>

**PUBLICATION ETHICS**

<https://www.wjnet.com/bpg/GerInfo/288>

**PUBLICATION MISCONDUCT**

<https://www.wjnet.com/bpg/gerinfo/208>

**ARTICLE PROCESSING CHARGE**

<https://www.wjnet.com/bpg/gerinfo/242>

**STEPS FOR SUBMITTING MANUSCRIPTS**

<https://www.wjnet.com/bpg/GerInfo/239>

**ONLINE SUBMISSION**

<https://www.f6publishing.com>



## Solid-Tubulocystic carcinoma: A new variant of intrahepatic cholangiocarcinoma

Iván A González, Wenyi Luo, Xuchen Zhang

**Specialty type:** Pathology

**Provenance and peer review:**

Invited article; Externally peer reviewed.

**Peer-review model:** Single blind

**Peer-review report's scientific quality classification**

Grade A (Excellent): A

Grade B (Very good): B

Grade C (Good): 0

Grade D (Fair): 0

Grade E (Poor): 0

**P-Reviewer:** Shi YJ, China;  
Zharikov YO, Russia

**Received:** March 17, 2023

**Peer-review started:** March 17, 2023

**First decision:** May 30, 2023

**Revised:** June 7, 2023

**Accepted:** June 13, 2023

**Article in press:** June 13, 2023

**Published online:** July 27, 2023



**Iván A González**, Department of Pathology and Laboratory Medicine, Indiana University School of Medicine, IN 46202, United States

**Wenyl Luo, Xuchen Zhang**, Department of Pathology, Yale University School of Medicine, New Haven, CT 06511, United States

**Corresponding author:** Xuchen Zhang, MD, PhD, Department of Pathology, Yale University School of Medicine, 300 Cedar Street, New Haven, CT 06511, United States.  
[xuchen.zhang@yale.edu](mailto:xuchen.zhang@yale.edu)

### Abstract

A new variant of intrahepatic cholangiocarcinoma (iCCA) has been recognized in recent years presenting predominantly as a large hepatic mass in young woman with the characteristic expression of inhibin by immunohistochemistry. This variant iCCA was originally termed as cholangioblastic variant of iCCA, and subsequently proposed to be renamed as inhibin-positive hepatic carcinoma or solid-tubulocystic variant of iCCA to better reflect its immunohistochemical profile or morphologic spectrum. The tumor histologically is composed of small to medium sized cells with scant to moderate amount of eosinophilic cytoplasm heterogeneously organized in solid, tubular, and cystic growth patterns. The tumor cells are positive for biliary markers, inhibin and albumin, and have a novel recurrent gene fusion, *NIPBL::NACC1*. Awareness of this new iCCA variant and its clinicopathologic features will aid in the diagnostic work-up and avoid confusion with other primary and metastatic hepatic neoplasms.

**Key Words:** Cholangiocarcinoma; Intrahepatic; Solid-tubulocystic; Cholangioblastic; Inhibin

©The Author(s) 2023. Published by Baishideng Publishing Group Inc. All rights reserved.



**Core Tip:** Solid-tubulocystic variant of intrahepatic cholangiocarcinoma (iCCA) is a recently recognized iCCA variant, which previously was termed as cholangioblastic iCCA. This new variant iCCA predominantly presents in young woman characterized by a heterogenous microscopic appearance with small to medium sized tumor cells with eosinophilic cytoplasm organized in solid, tubular, and cystic growth patterns. One of the defining features is the diffuse expression of inhibin. Recurrent *NIPBL::NACCI* gene fusion has been identified in this iCCA variant. Compared to typical iCCAs, patients with this variant iCCA may have a better prognosis with 25% of the cases reported died of disease in 5 years.

**Citation:** González IA, Luo W, Zhang X. Solid-Tubulocystic carcinoma: A new variant of intrahepatic cholangiocarcinoma. *World J Hepatol* 2023; 15(7): 897-903

**URL:** <https://www.wjgnet.com/1948-5182/full/v15/i7/897.htm>

**DOI:** <https://dx.doi.org/10.4254/wjh.v15.i7.897>

## INTRODUCTION

Cholangiocarcinoma (CCA) is a highly aggressive adenocarcinoma arising from the biliary tree and can be divided into intrahepatic CCA (iCCA), perihilar CCA and distal CCA. Perihilar CCA arises from the second-order bile ducts to the insertion of the cystic duct whereas distal CCA is confined to the common bile duct below this insertion[1,2]. Collectively perihilar and distal CCA are referred as extrahepatic CCA. The most recent WHO classification of the digestive system tumours classified iCCA into two main subtypes based on their histologic features, small duct and large duct[3]. Other recognized rare variants of iCCA include adenosquamous carcinoma, squamous carcinoma, mucinous carcinoma, muc-oepidermoid carcinoma, signet-ring cell carcinoma, clear cell carcinoma, ductal plate malformation-like pattern carcinoma, lymphoepithelioma-like carcinoma and sarcomatous carcinoma[3,4]. Recently, a new variant of inhibin-positive iCCA has been reported, which was termed as solid-tubulocystic or cholangioblastic variant iCCA[5-10]. This novel variant has a characteristic gene fusion, *NIPBL::NACCI*, which was first recognized by Argani *et al*[7], and subsequently confirmed in another case report by González *et al*[5].

This mini review summarized the unique clinical, morphologic, and molecular features of this newly identified and underrecognized inhibin-positive solid-tubulocystic/cholangioblastic variant iCCA. Awareness of this new variant would aid practicing physicians to recognize this rare variant iCCA.

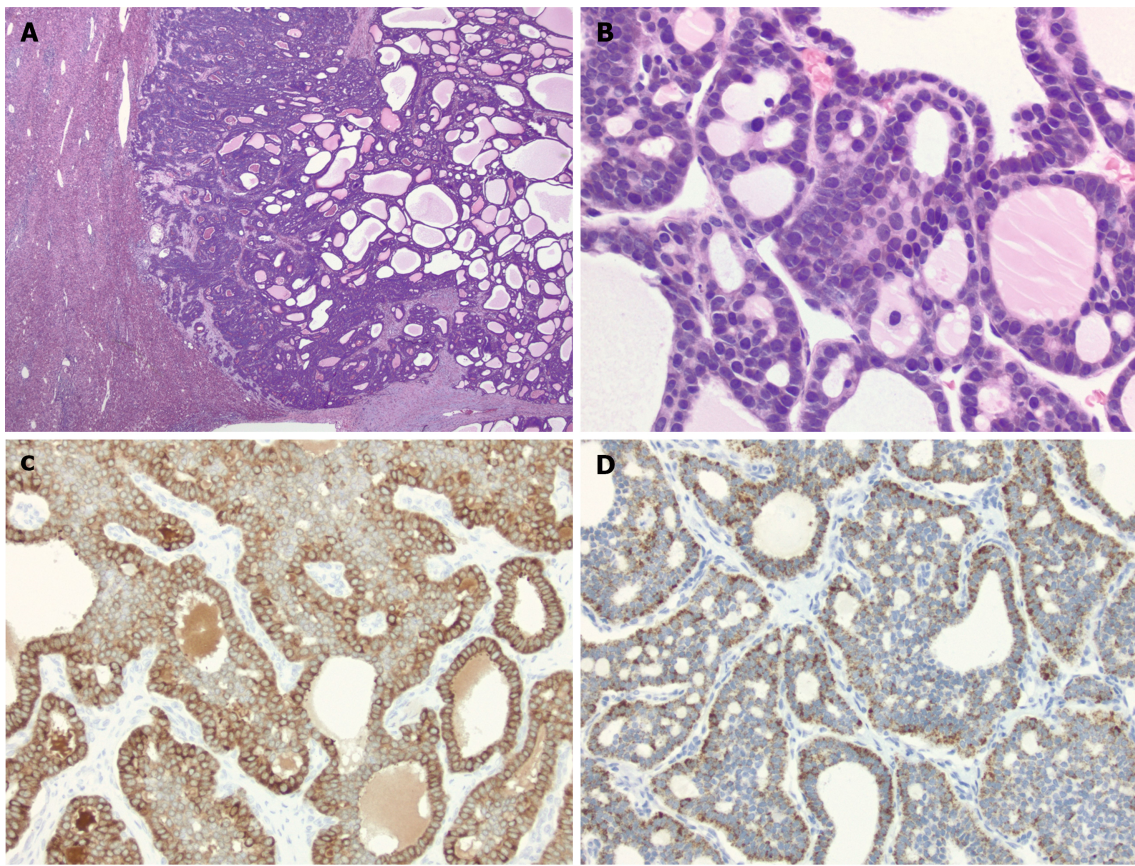
## CLINICAL FEATURES

The inhibin-positive solid-tubulocystic variant iCCA presents with a median age of 28 years (range: 15-54 years) and predominantly occurs in woman (82%)[5-9,11-13]. The majority of the patients presents with non-specific abdominal distention and pain as well as nausea, vomiting and discomfort. On imaging the tumor is characterized by a heterogenous appearance with both solid and cystic areas and tends to have a well-demarcated border[5]. The median size at presentation is 16 cm (range: 6.9-32 cm). Of the patients reported with available follow-up information, half of the patients developed recurrence or metastasis during follow-up which were treated with adjuvant chemotherapy, and 25% (4 cases) died of disease all within 5 years of diagnosis.

## MORPHOLOGIC FEATURES

The inhibin-positive solid-tubulocystic/cholangioblastic variant iCCA has distinct and characteristic morphologic features with multiple different patterns recognized within each tumor. Grossly, the tumors are well-circumscribed and the cut-surfaces vary from a solid tan-white to tan-yellow surface with areas of hemorrhage and degeneration[5]. Tumor necrosis is often seen particularly in larger tumors. Areas with a multicystic surface creating a spongiform appearance in some cases can be seen[5]. These cystic structures often have smooth inner surface and are filled with clear to tan-yellow fluid. In some cases, fibrous bands can be seen within the tumor.

As one could expect from the heterogenous gross appearance, the histologic features of this tumor vary in different areas within the same tumor which is both useful in their diagnosis but can also create confusion and a potential misdiagnosis. The solid areas are characterized by tumor cells with scant to moderate amount of eosinophilic focally granular cytoplasm with round to oval nuclei with a finely granular chromatin and occasional small nucleoli (Figures 1A and B). These tumor cells are organized in solid sheets to trabecular growth patterns and tubular/pseudoglandular structures. Both the cytologic morphology and architectural configuration are reminiscent of well-differentiated neuroendocrine tumors (WD-NET) and acinar cell carcinomas (ACC) which are differential diagnoses of these tumors. In other areas a tubular architecture is seen with cystic dilatation. The cysts are lined by tumor cells with similar cytologic features as the solid areas, and pink colloid-like secretions can be seen within the lumen in some cases mimicking thyroid follicular neoplasm. In some cases, the compact solid areas have a more crowded pattern with tumor cells showing only scant cytoplasm. Given this appearance these tumor cells are considered as a more “primitive” appearance and referred as



DOI: 10.4254/wjh.v15.i7.897 Copyright ©The Author(s) 2023.

**Figure 1 Solid-tubulocystic variant of intrahepatic cholangiocarcinoma.** A: Representative picture of a resected solid-tubulocystic variant of intrahepatic cholangiocarcinoma (right) in a non-cirrhotic liver (left). The tumor is well demarcated from the background liver (20x, Hematoxylin-eosin stain); B: Representative picture showing the tumor with solid, tubular, and cystic growth patterns (200x, Hematoxylin-eosin stain); C: Representative picture showing the tumor cells are positive for inhibin (200x, immunohistochemical stain); D: Representative picture showing tumor cells are positive for albumin (200x, in situ hybridization).

blastema-like areas. Therefore, these lesions have been termed as “cholangioblastic variant of iCCA” given the presence of blastema-like areas and the expression of neuroendocrine markers, a common feature of other primitive tumors[6]. However, in our opinion these tumors do not have the characteristics of other primitive epithelial tumors, nor recapitulate the developing ductal plate[5]. In light of this and the histologic features, we prefer to use the term of solid-tubulocystic variant of iCCA as proposed by Wen KW and colleagues[8], instead of cholangioblastic variant of iCCA.

## IMMUNOPHENOTYPE

Perhaps given the rarity of this variant iCCA, an extensive immunophenotype has been reported in the case report and small case series in the literature with the most characteristic finding being the diffuse and strong expression of inhibin (Table 1) (Figure 1C)[5-9,11,14]. As expected, the tumor is diffusely positive for cytokeratin (CK) AE1/AE3, CAM5.2, CK7 and CK19, whereas being negative for CK20 and CDX2, consistent with a biliary phenotype. It is also negative for hepatocellular markers, such as HepPar1 and arginase-1. Of note, albumin by in situ hybridization is positive in tumor cells (Figure 1D), which is consistent with primary hepatic carcinoma - iCCA. One of the pitfalls is the focal to diffuse expression of multiple neuroendocrine markers including CD56, synaptophysin and chromogranin, which varies from a weak to strong positivity, but INSM1, a more specific neuroendocrine marker is so far reported to be negative.

## MOLECULAR FEATURES

Recently, a novel fusion in this variant of iCCA involving the exon 8 of *NIPBL* and exon 2 of *NACC1*, *NIPBL::NACC1* has been identified in 3 cases[7]. An additional case was identified by the authors in the Cancer Genome Atlas harboring an identical fusion (case TCGA-ZH-A8Y6). The digital slide of this case available online ([www.cbioportal.org](http://www.cbioportal.org)) shows the characteristic morphologic features of solid-tubulocystic variant of iCCA. Most recently, a subsequent study reported one case to harbor this fusion[5]; hence to date 5 cases have been identified with this novel fusion. However, it remains unclear if this fusion is specific for this tumor type. To date this exact fusion has only been reported in 2 other malignancies both reported as “noncolorectal and nonpancreas gastrointestinal primary[15].” Unfortunately, no

**Table 1 Aggregated selected immunophenotype[5,6,7,8,11], n (%)**

Antibody	Positive	Negative
Inhibin	14 (100)	0
Cytokeratin AE1/AE3	6 (100)	0
CAM5.2	4 (100)	0
Cytokeratin-7	14 (100)	0
Cytokeratin-19	12 (100)	0
Cytokeratin-20	0	6 (100)
CDX2	0	3 (100)
Arginase-1	0	5 (100)
HepPar1	0	13 (100)
Glypican-3	1 (12.5)	7 (87.5)
Glutamine synthetase	3 (100)	0
Albumin by <i>in situ</i> hybridization	6 (100)	0
Synaptophysin	10 (76.9)	3 (23.1)
Chromogranin	9 (64.3)	5 (35.7)
CD56	5 (71.4)	2 (28.6)
INSM1	4 (100)	0
Beta-catenin	0	7 (100)
CD10	0	3 (100)
Pax8	0	2 (100)
Gata3	0	1 (100)
Mammaglobin	0	1 (100)
GCDFP-15	0	1 (100)
ER	0	2 (100)
PR	0	2 (100)
S100	0	3 (100)

CDX2: Caudal-related homeobox gene 2; INSM1: Insulinoma associated protein 1; GCDFP-15: Gross cystic disease fluid protein 15; ER: Estrogen receptor; PR: Progesterone receptor; HMB45: Human melanoma black 45; pCEA: Polyclonal carcinoembryonic antigen; mCEA: Monoclonal carcinoembryonic antigen; SF-1: Steroidogenic factor 1; WT-1: Wilms tumor 1; TTF-1: Thyroid transcription factor 1; AFP: Alpha fetoprotein; CA125: Cancer antigen 125; CA19.9: Cancer antigen 19.9; SALL4: Sal-like 4; Oct3/4: Octamer binding transcription factor 3/4; PLAP: Placental-like alkaline phosphatase; hCG: Human chorionic gonadotrophin; RCC: Renal cell carcinoma; SOX9: SRY-box transcription factor 9.

description of the morphology of these two tumors is available. Although this fusion appears to be specific for this tumor at this time, given its characteristic morphology and immunohistochemical profile, molecular testing may not be necessarily needed in our opinion for diagnostic purposes.

The *NIPBL* (Nipped-b homolog) gene codes the protein delangin[16], a cohesin loading factor, which is essential for the chromatin loading of cohesin, an important ring-shaped protein complex for the structural organization of chromosomes and for the repair of DNA double-strand breaks[17]. Delangin also plays a role in translocating cohesin along the chromatin fibers which is thought to be the underlying pathogenesis of Cornelia de Lange syndrome[18,19]. Additionally, *NIPBL* plays a crucial role in myeloid differentiation[20]. Loss-of-function of *NIPBL* has been associated with an increased number of myeloid progenitors and a decrease of mature myeloid cells, and has been reported in acute megakaryoblastic leukemia[21,22]. In solid tumors, variant in *NIPBL* occurs in tenosynovial giant cell tumor, specifically a *NIPBL::ERG* fusion[23]. Interestingly, *NIPBL* overexpression has been shown to correlate with poor prognosis and chemotherapy resistance in non-small cell lung cancer, and knockdown of *NIPBL* in non-small cell lung cancer cell or breast cancer cell lines induces impaired proliferation, cell cycle arrest, apoptosis and autophagy[24-26]. NAC1 coded by *NACC1* is a member of the Bric-a-Brac Tramtrack Broad (BRB) family of protein complex which is also known as pox virus and zinc finger (POZ). This protein complex has multiple cellular functions involving in cellular proliferation, apoptosis, protein degradation, transcription and cellular morphology, among others[27-29]. NAC1 is associated with development of endometrial carcinomas[29], and tumor recurrence[28], and the development of chemoresistance in ovarian cancers[30-



32]. Although both *NIPBL* and *NAC1* genes have a crucial role in cellular proliferation and DNA repair, it is unclear to date what is the mechanistic function of their fusion protein. Future studies are needed to understand its biological function of this fusion which could lead potentially to the development of targeted therapies.

## DIFFERENTIAL DIAGNOSIS

Metastatic or primary hepatic WD-NETs often share similar histologic pattern, cytologic morphology and positivity of neuroendocrine markers as this solid-tubulocystic variant of iCCA. One of the main clues for a solid-tubulocystic variant of iCCA is the multiple growth patterns present within each case in contrast to WD-NET which tends to have a more homogenous growth pattern. However, immunohistochemistry work-up is essential in their distinction. Although both WD-NET and solid-tubulocystic variant of iCCA can express neuroendocrine markers (synaptophysin and chromogranin), the expression of CK7 and CK19, and albumin by in-situ hybridization in solid-tubulocystic variant of iCCA rules out a diagnosis of WD-NET. Since the morphologic similarity with metastatic ACC, a possibility of ACC needs to be excluded. The negative expression of neuroendocrine markers (synaptophysin and chromogranin) and the positive expression of acinar markers (BCL10, trypsin and chymotrypsin) can help to rule out solid-tubulocystic variant of iCCA. Of note, about 25% of the pancreatic ACCs are positive for albumin by in-situ hybridization[33]. The cystic and glandular architecture containing colloid-like secretions is reminiscent of thyroid follicular neoplasm. The negative expression of TTF-1 or thyroglobulin can help to exclude the possibility of metastatic follicular neoplasm. Although uncommon, a metastatic sex-cord stromal tumor may enter the differential diagnosis given the expression of inhibin and similarity of some of the morphologic features. However, the expression of CK7, CK19, neuroendocrine markers and albumin by in-situ hybridization by solid-tubulocystic variant of iCCA can help to rule out this possibility.

## TREATMENT CONSIDERATIONS

Given the rarity of these cases it remains unclear what is the optimal management plan for patients with this new variant iCCA. The majority of the cases reported with available information underwent a complete surgical resection ranging from segmentectomies to lobectomies, and one case was deemed not a surgical candidate given the presence of widely metastatic disease[5-9]. Two patients were treated before resection, one with neoadjuvant chemotherapy and one with transarterial chemoembolization[6]. The non-surgical candidate was treated with cisplatin and gemcitabine[9]. Most of the patients were treated with adjuvant chemotherapy after resection with a similar regimen, cisplatin and gemcitabine [7]. The previously reported pediatric patient was treated with a different regimen which included capecitabine[5].

## CONCLUSION

Inhibin-positive hepatic carcinoma with solid-tubulocystic features (solid-tubulocystic carcinoma) is a recently recognized iCCA variant which predominantly presents in young woman with a large size at presentation. They have a characteristic morphology of round to oval cells with scant to moderate amount of eosinophilic cytoplasm which are organized in multiple different growth patterns including solid, tubular, and cystic. This novel variant is associated with a characteristic fusion gene, *NIPBL::NAC1*, being the first iCCA with a described recurrent gene fusion. Although much remains unknown of this variant based on the reported cases to date, they are associated with relatively favorable outcome with a 25% mortality rate compared to the 7%-20% 5-year survival rate of typical iCCAs[2]. Further studies are needed to fully explore the biological function of this fusion gene and its role in the tumorigenesis and to continue to characterize this rare tumor.

## FOOTNOTES

**Author contributions:** González IA reviewed the literature and drafted the manuscript; Luo W provided some of the histological images and edited the manuscript; Zhang X provided overall intellectual input, reviewed the literature, and edited the final version of the manuscript; all authors approved the final version to be published.

**Conflict-of-interest statement:** The authors declare no conflict of interest.

**Open-Access:** This article is an open-access article that was selected by an in-house editor and fully peer-reviewed by external reviewers. It is distributed in accordance with the Creative Commons Attribution NonCommercial (CC BY-NC 4.0) license, which permits others to distribute, remix, adapt, build upon this work non-commercially, and license their derivative works on different terms, provided the original work is properly cited and the use is non-commercial. See: <https://creativecommons.org/licenses/by-nc/4.0/>

**Country/Territory of origin:** United States

**ORCID number:** Xuchen Zhang 0000-0002-1484-4672.

S-Editor: Ma YJ

L-Editor: A

P-Editor: Cai YX

## REFERENCES

- Brindley PJ, Bachini M, Ilyas SI, Khan SA, Loukas A, Sirica AE, Teh BT, Wongkham S, Gores GJ. Cholangiocarcinoma. *Nat Rev Dis Primers* 2021; **7**: 65 [PMID: 34504109 DOI: 10.1038/s41572-021-00300-2]
- Banales JM, Marin JGG, Lamarca A, Rodrigues PM, Khan SA, Roberts LR, Cardinale V, Carpino G, Andersen JB, Braconi C, Calvisi DF, Perugorria MJ, Fabris L, Boulter L, Macias RIR, Gaudio E, Alvaro D, Gradilone SA, Strazzabosco M, Marziani M, Coulouam C, Fouassier L, Raggi C, Invernizzi P, Mertens JC, Moncsek A, Rizvi S, Heimbach J, Koerkamp BG, Bruix J, Forner A, Bridgewater J, Valle JW, Gores GJ. Cholangiocarcinoma 2020: the next horizon in mechanisms and management. *Nat Rev Gastroenterol Hepatol* 2020; **17**: 557-588 [PMID: 32606456 DOI: 10.1038/s41575-020-0310-z]
- Bosman FT, Carneiro F, Hruban R, Theise N. WHO Classification of Tumours: Digestive System Tumours. 5th Edition: IARC, 2019
- Zen Y. Intrahepatic cholangiocarcinoma: typical features, uncommon variants, and controversial related entities. *Hum Pathol* 2023; **132**: 197-207 [PMID: 35697170 DOI: 10.1016/j.humpath.2022.06.001]
- González IA, Linn RL, Wilkins BJ. Solid-Tubulocystic Variant of Intrahepatic Cholangiocarcinoma: Report of a Pediatric Case With Molecular Characterization. *Pediatr Dev Pathol* 2022; **25**: 661-667 [PMID: 36031872 DOI: 10.1177/10935266221119769]
- Braxton DR, Saxe D, Damjanov N, Stashek K, Shroff S, Morrisette JD, Tondon R, Furth EE. Molecular and cytogenomic profiling of hepatic adenocarcinoma expressing inhibinA, a mimicker of neuroendocrine tumors: proposal to reclassify as "cholangioblastic variant of intrahepatic cholangiocarcinoma". *Hum Pathol* 2017; **62**: 232-241 [PMID: 28232156 DOI: 10.1016/j.humpath.2017.02.001]
- Argani P, Palsgrove DN, Anders RA, Smith SC, Saoud C, Kwon R, Voltaggio L, Assarzadegan N, Oshima K, Rooper L, Matoso A, Zhang L, Cantarel BL, Gagan J, Antonescu CR. A Novel NIPBL-NACC1 Gene Fusion Is Characteristic of the Cholangioblastic Variant of Intrahepatic Cholangiocarcinoma. *Am J Surg Pathol* 2021; **45**: 1550-1560 [PMID: 33999553 DOI: 10.1097/PAS.0000000000001729]
- Wen KW, Joseph NM, Srivastava A, Saunders TA, Jain D, Rank J, Feely M, Zarrinpar A, Al Diffalha S, Shyn PB, Graham RP, Drage MG, Kakar S. Inhibin-positive hepatic carcinoma: proposal for a solid-tubulocystic variant of intrahepatic cholangiocarcinoma. *Hum Pathol* 2021; **116**: 82-93 [PMID: 34298064 DOI: 10.1016/j.humpath.2021.07.004]
- Verhoeff K, Bacani J, Fung C, Canterbury LA. A Cholangioblastic Variant of Cholangiocarcinoma. *ACG Case Rep J* 2022; **9**: e00746 [PMID: 35187186 DOI: 10.14309/crj.0000000000000746]
- Ayvazyan KA, Gurmikov BN, Anvari RO, Stepanova YA, Kalinin DV, Glotov AV, Shirokov VS, Marinova LA, Kadirova MV, Malysenko ES, Zhao AV. Cholangioblastic liver carcinoma. *Annals of HPB Surgery* 2022; **27**: 125-134 [DOI: 10.16931/1995-5464.2022-4-125-134]
- Vrettou E, Hytioglou P, Sikas N, Soultouyannis I, Goodman ZD. Hepatic adenocarcinoma expressing inhibin in a young patient on oral contraceptives. *Virchows Arch* 2005; **446**: 560-565 [PMID: 15815932 DOI: 10.1007/s00428-005-1241-3]
- Chablé-Montero F, Shah B S A, Montante-Montes de Oca D, Angeles-Ángeles A, Henson DE, Albores-Saavedra J. Thyroid-like cholangiocarcinoma of the liver: an unusual morphologic variant with follicular, trabecular and insular patterns. *Ann Hepatol* 2012; **11**: 961-965 [PMID: 23109464]
- Fornelli A, Bondi A, Jovine E, Eusebi V. Intrahepatic cholangiocarcinoma resembling a thyroid follicular neoplasm. *Virchows Arch* 2010; **456**: 339-342 [PMID: 20082203 DOI: 10.1007/s00428-009-0874-z]
- Liang TZ, Whang G, Chopra S. Primary hepatic carcinoma with inhibin positivity in a young male patient: a rare tumor previously only reported in females-case report and review of literature. *Virchows Arch* 2021; **478**: 605-610 [PMID: 32533342 DOI: 10.1007/s00428-020-02864-y]
- Tsang ES, Grisdale CJ, Pleasance E, Topham JT, Mungall K, Reisle C, Choo C, Carreira M, Bowlby R, Karasinska JM, MacMillan D, Williamson LM, Chuah E, Moore RA, Mungall AJ, Zhao Y, Tessier-Cloutier B, Ng T, Sun S, Lim HJ, Schaeffer DF, Renouf DJ, Yip S, Laskin J, Marra MA, Jones SJM, Loree JM. Uncovering Clinically Relevant Gene Fusions with Integrated Genomic and Transcriptomic Profiling of Metastatic Cancers. *Clin Cancer Res* 2021; **27**: 522-531 [PMID: 33148671 DOI: 10.1158/1078-0432.CCR-20-1900]
- Tonkin ET, Wang TJ, Lisgo S, Bamshad MJ, Strachan T. NIPBL, encoding a homolog of fungal Scc2-type sister chromatid cohesion proteins and fly Nipped-B, is mutated in Cornelia de Lange syndrome. *Nat Genet* 2004; **36**: 636-641 [PMID: 15146185 DOI: 10.1038/ng1363]
- Shi Z, Gao H, Bai XC, Yu H. Cryo-EM structure of the human cohesin-NIPBL-DNA complex. *Science* 2020; **368**: 1454-1459 [PMID: 32409525 DOI: 10.1126/science.abb0981]
- García P, Fernandez-Hernandez R, Cuadrado A, Coca I, Gomez A, Maqueda M, Latorre-Pellicer A, Puisac B, Ramos FJ, Sandoval J, Esteller M, Mosquera JL, Rodriguez J, Pié J, Losada A, Queralt E. Disruption of NIPBL/Scc2 in Cornelia de Lange Syndrome provokes cohesin genome-wide redistribution with an impact in the transcriptome. *Nat Commun* 2021; **12**: 4551 [PMID: 34315879 DOI: 10.1038/s41467-021-24808-z]
- Newkirk DA, Chen YY, Chien R, Zeng W, Biesinger J, Flowers E, Kawauchi S, Santos R, Calof AL, Lander AD, Xie X, Yokomori K. The effect of Nipped-B-like (Nipbl) haploinsufficiency on genome-wide cohesin binding and target gene expression: modeling Cornelia de Lange syndrome. *Clin Epigenetics* 2017; **9**: 89 [PMID: 28855971 DOI: 10.1186/s13148-017-0391-x]
- Mazzola M, Deflorian G, Pezzotta A, Ferrari L, Fazio G, Bresciani E, Saitta C, Fumagalli M, Parma M, Marasca F, Bodega B, Riva P, Cotelli F, Biondi A, Marozzi A, Cazzaniga G, Pistocchi A. NIPBL: a new player in myeloid cell differentiation. *Haematologica* 2019; **104**: 1332-1341 [PMID: 30630974 DOI: 10.3324/haematol.2018.200899]
- Yoshida K, Toki T, Okuno Y, Kanezaki R, Shiraishi Y, Sato-Otsubo A, Sanada M, Park M-j, Terui K, Suzuki H. The landscape of somatic mutations in Down syndrome-related myeloid disorders. *Nat Genet* 2013; **45**: 1293-1299 [DOI: 10.1038/ng.2759]
- de Braekeleer E, Auffret R, García JR, Padilla JM, Fletes CC, Morel F, Douet-Guilbert N, de Braekeleer M. Identification of NIPBL, a new ETV6 partner gene in t(5;12) (p13;p13)-associated acute megakaryoblastic leukemia. *Leuk Lymphoma* 2013; **54**: 423-424 [PMID: 22734863 DOI: 10.3109/10428194.2012.706288]
- Vougiouklakis T, Shen G, Feng X, Hoda ST, Jour G. Molecular Profiling of Atypical Tenosynovial Giant Cell Tumors Reveals Novel Non-



- CSF1 Fusions. *Cancers (Basel)* 2019; **12** [PMID: [31906059](#) DOI: [10.3390/cancers12010100](#)]
- 24 **Xu W**, Ying Y, Shan L, Feng J, Zhang S, Gao Y, Xu X, Yao Y, Zhu C, Mao W. Enhanced expression of cohesin loading factor NIPBL confers poor prognosis and chemotherapy resistance in non-small cell lung cancer. *J Transl Med* 2015; **13**: 153 [PMID: [25963978](#) DOI: [10.1186/s12967-015-0503-3](#)]
- 25 **Zheng L**, Zhou H, Guo L, Xu X, Zhang S, Xu W, Mao W. Inhibition of NIPBL enhances the chemosensitivity of non-small-cell lung cancer cells *via* the DNA damage response and autophagy pathway. *Onco Targets Ther* 2018; **11**: 1941-1948 [PMID: [29670369](#) DOI: [10.2147/OTT.S158655](#)]
- 26 **Zhou H**, Zheng L, Lu K, Gao Y, Guo L, Xu W, Wang X. Downregulation of Cohesin Loading Factor Nipped-B-Like Protein (NIPBL) Induces Cell Cycle Arrest, Apoptosis, and Autophagy of Breast Cancer Cell Lines. *Med Sci Monit* 2017; **23**: 4817-4825 [PMID: [28987049](#) DOI: [10.12659/msm.906583](#)]
- 27 **Yap KL**, Fraley SI, Thiaville MM, Jinawath N, Nakayama K, Wang J, Wang TL, Wirtz D, Shih IeM. NAC1 is an actin-binding protein that is essential for effective cytokinesis in cancer cells. *Cancer Res* 2012; **72**: 4085-4096 [PMID: [22761335](#) DOI: [10.1158/0008-5472.CAN-12-0302](#)]
- 28 **Nakayama K**, Nakayama N, Davidson B, Sheu JJ, Jinawath N, Santillan A, Salani R, Bristow RE, Morin PJ, Kurman RJ, Wang TL, Shih IeM. A BTB/POZ protein, NAC-1, is related to tumor recurrence and is essential for tumor growth and survival. *Proc Natl Acad Sci U S A* 2006; **103**: 18739-18744 [PMID: [17130457](#) DOI: [10.1073/pnas.0604083103](#)]
- 29 **Ishikawa M**, Nakayama K, Yeasmin S, Katagiri A, Iida K, Nakayama N, Miyazaki K. NAC1, a potential stem cell pluripotency factor expression in normal endometrium, endometrial hyperplasia and endometrial carcinoma. *Int J Oncol* 2010; **36**: 1097-1103 [PMID: [20372782](#) DOI: [10.3892/ijo\\_00000591](#)]
- 30 **Zhang Y**, Cheng Y, Ren X, Zhang L, Yap KL, Wu H, Patel R, Liu D, Qin ZH, Shih IM, Yang JM. NAC1 modulates sensitivity of ovarian cancer cells to cisplatin by altering the HMGB1-mediated autophagic response. *Oncogene* 2012; **31**: 1055-1064 [PMID: [21743489](#) DOI: [10.1038/onc.2011.290](#)]
- 31 **Nakayama K**, Rahman MT, Rahman M, Yeasmin S, Ishikawa M, Katagiri A, Iida K, Nakayama N, Miyazaki K. Biological role and prognostic significance of NAC1 in ovarian cancer. *Gynecol Oncol* 2010; **119**: 469-478 [PMID: [20869761](#) DOI: [10.1016/j.ygyno.2010.08.031](#)]
- 32 **Jinawath N**, Vasoontara C, Yap KL, Thiaville MM, Nakayama K, Wang TL, Shih IM. NAC-1, a potential stem cell pluripotency factor, contributes to paclitaxel resistance in ovarian cancer through inactivating Gadd45 pathway. *Oncogene* 2009; **28**: 1941-1948 [PMID: [19305429](#) DOI: [10.1038/onc.2009.37](#)]
- 33 **Askan G**, Deshpande V, Klimstra DS, Adsay V, Sigel C, Shia J, Basturk O. Expression of Markers of Hepatocellular Differentiation in Pancreatic Acinar Cell Neoplasms: A Potential Diagnostic Pitfall. *Am J Clin Pathol* 2016; **146**: 163-169 [PMID: [27425386](#) DOI: [10.1093/ajcp/aqw096](#)]



Published by **Baishideng Publishing Group Inc**  
7041 Koll Center Parkway, Suite 160, Pleasanton, CA 94566, USA

**Telephone:** +1-925-3991568

**E-mail:** [bpgoffice@wjgnet.com](mailto:bpgoffice@wjgnet.com)

**Help Desk:** <https://www.f6publishing.com/helpdesk>

<https://www.wjgnet.com>

