

Retrospective Study

Retrocaval liver lifting maneuver and modifications of total hepatic vascular exclusion for liver tumor resection

Saiho Ko, Yuuki Kirihiyaya, Yayoi Matsumoto, Tadataka Takagi, Masanori Matsusaka, Tomohide Mukogawa, Hirofumi Ishikawa, Akihiko Watanabe

Saiho Ko, Yuuki Kirihiyaya, Yayoi Matsumoto, Tadataka Takagi, Masanori Matsusaka, Tomohide Mukogawa, Hirofumi Ishikawa, Akihiko Watanabe, Department of Surgery, Nara Prefecture General Medical Center, Nara 631-0846, Japan

Author contributions: Ko S conceived and designed the study, and wrote the manuscript; Kirihiyaya Y, Matsumoto Y and Takagi T acquired the data; Ko S, Matsusaka M and Mukogawa T analyzed and interpreted the data; Ishikawa H contributed to drafting of the manuscript; Watanabe A contributed to critical revision of the manuscript.

Institutional review board statement: The Institutional Ethical Committee of Nara Prefecture General Medical Center approved this retrospective clinical study.

Informed consent statement: Written informed consent was obtained from all patients for use of clinical data in research. The analysis is a retrospective study and the clinical data were anonymous.

Conflict-of-interest statement: None of the authors has any conflict of interest related to the publication of this manuscript.

Data sharing statement: There are no additional data available for this manuscript.

Open-Access: This article is an open-access article which was selected by an in-house editor and fully peer-reviewed by external reviewers. It is distributed in accordance with the Creative Commons Attribution Non Commercial (CC BY-NC 4.0) license, which permits others to distribute, remix, adapt, build upon this work non-commercially, and license their derivative works on different terms, provided the original work is properly cited and the use is non-commercial. See: <http://creativecommons.org/licenses/by-nc/4.0/>

Correspondence to: Dr. Saiho Ko, Director, Department of Surgery, Nara Prefecture General Medical Center, 1-30-1 Nara, Nara 631-0846, Japan. saihoko@naramed-u.ac.jp
 Telephone: +81-742-466001
 Fax: +81-742-466011

Received: November 28, 2015
 Peer-review started: November 29, 2015
 First decision: January 4, 2016
 Revised: January 13, 2016
 Accepted: March 7, 2016
 Article in press: March 9, 2016
 Published online: March 18, 2016

Abstract

AIM: To evaluate the efficacy of technical modifications of total hepatic vascular exclusion (THVE) for hepatectomy involving inferior vena cava (IVC).

METHODS: Of 301 patients who underwent hepatectomy during the immediate previous 5-year period, 8 (2.7%) required THVE or modified methods of IVC cross-clamping for resection of liver tumors with massive involvement of the IVC. Seven of the patients had diagnosis of colorectal liver metastases and 1 had diagnosis of hepatocellular carcinoma. All tumors involved the IVC, and THVE was unavoidable for combined resection of the IVC in all 8 of the patients. Technical modifications of THVE were applied to minimize the extent and duration of vascular occlusion, thereby reducing the risk of damage.

RESULTS: Broad dissection of the space behind the IVC coupled with lifting up of the liver from the retrocaval space was effective for controlling bleeding around the IVC before and during THVE. The procedures facilitate modification of the positioning of the cranial IVC cross-clamp. Switching the cranial IVC cross-clamp from supra- to retrohepatic IVC or to the confluence of hepatic vein decreased duration of the THVE while restoring hepatic blood flow or systemic circulation *via* the IVC. Oblique cranial IVC cross-clamping avoided ischemia of the remnant hemi-liver. With these technical

modifications, the mean duration of THVE was 13.4 ± 8.4 min, which was extremely shorter than that previously reported in the literature. Recovery of liver function was smooth and uneventful for all 8 patients. There was no case of mortality, re-operation, or severe complication (*i.e.*, Clavien-Dindo grade of III or more).

CONCLUSION: The retrocaval liver lifting maneuver and modifications of cranial cross-clamping were useful for minimizing duration of THVE.

Key words: Total hepatic vascular exclusion; Retrocaval liver lifting maneuver; Oblique clamping; Switching the clamp; Hepatectomy

© **The Author(s) 2016.** Published by Baishideng Publishing Group Inc. All rights reserved.

Core tip: Total hepatic vascular exclusion (THVE) is needed for resection of liver tumors involving inferior vena cava (IVC). Because THVE has a high risk of morbidity, compared to inflow occlusion alone, its duration should be shortened. The technical modifications reported here minimized the risk of damage of THVE. Specifically, the procedures include the retrocaval liver lifting maneuver, switching of the cranial IVC cross-clamp, and oblique IVC cross-clamping. For the 8 patients retrospectively assessed, the duration of THVE was 13.4 ± 8.4 min, which was remarkably shorter than that reported previously. Postoperative recovery was smooth for all patients, without severe complications.

Ko S, Kirihataya Y, Matsumoto Y, Takagi T, Matsusaka M, Mukogawa T, Ishikawa H, Watanabe A. Retrocaval liver lifting maneuver and modifications of total hepatic vascular exclusion for liver tumor resection. *World J Hepatol* 2016; 8(8): 411-420 Available from: URL: <http://www.wjgnet.com/1948-5182/full/v8/i8/411.htm> DOI: <http://dx.doi.org/10.4254/wjh.v8.i8.411>

INTRODUCTION

Despite recent advances in liver surgery, resection for tumors involving inferior vena cava (IVC) is still challenging^[1-4]. This situation requires total hepatic vascular exclusion (THVE) for combined resection of the IVC. The THVE method was developed to control bleeding during hepatic parenchymal transection^[5,6]; however, it is technically complicated and may cause profound liver damage and circulatory instability, and as a result inflow occlusion *via* Pringle's maneuver is more frequently used to control bleeding during usual hepatectomy, rather than THVE^[7]. While THVE can effectively limit blood loss during hepatic parenchymal transection, especially that from hepatic veins^[8,9], its related rates of morbidity and mortality after hepatectomy for tumors involving IVC have been quite high^[10,11]. Novel strategies to reduce the risk of damage and complications of THVE will benefit clinical practice and

patient outcome.

Long occlusion time is one of the most significant hazards of operative morbidity and mortality after hepatectomy with THVE^[2]. There is no doubt about the importance of minimizing duration of THVE to reduce ischemic damage of the liver. Different from the procedure of portal triad clamping applied alone, addition of THVE necessitates taking into account both hepatic ischemia and instability of systemic circulation, including renal congestion. Selective hepatic vascular exclusion with hepatic venous occlusion preserving IVC flow is an alternative of THVE in usual hepatectomy^[12,13], but the method cannot be used for tumors involving IVC. Reports describing technical modifications aimed at minimizing hazards of THVE are available in the publicly available literature, but they are small in number^[8,14]. Herein, we describe some technical modifications of THVE that were applied to patients in our hospital and which were found by retrospective analysis to have successfully minimized the duration and the extent of vascular occlusion. The purpose of reporting these results is to share these methods with clinicians and researchers in the field of hepatology so as to help reduce the rates of disastrous events during hepatectomy requiring THVE.

MATERIALS AND METHODS

Patients

From January 2010 to April 2015, 301 patients underwent hepatectomy at our hospital. Patients who underwent hepatectomy with THVE or modified THVE with IVC cross-clamping were selected for retrospective analysis, and those patients who had required only a small portion of the IVC to be resected without cross-clamping of the IVC were excluded from the study. A total of 8 patients (2.7% of the 301 hepatectomized patients) fit the criteria for inclusion, namely tumors involving IVC and treatment by combined resection of the IVC.

Preoperative evaluation for indication of THVE

For all 8 patients, tumor status had been evaluated using three-phase contrast-enhanced computed tomography (CT). Contrast-enhanced magnetic resonance imaging (MRI) and/or (¹⁸F)-fluoro-D-glucose positron emission tomography had been performed in addition as necessary. The indication of THVE during hepatectomy was massive tumor involvement of IVC or tumor involvement of major hepatic vein extending to its confluence on IVC. Tumors that had been deemed as necessitating resection by side clamping of the IVC were excluded from the indication of THVE. THVE was not used merely for controlling bleeding from the parenchymal transection plane.

Standard THVE procedures

By dissecting the coronary ligament around the supra-hepatic IVC just below the diaphragm, the outer wall

Table 1 Surgical procedures

Case No.	Diagnosis	No. of tumor	Size of the largest tumor, cm	THVE and modifications	THVE duration, min	Hepatectomy	Vascular reconstruction procedures	Outcome
1	HCC	1	20.0	Standard with switching ¹	5	Extended right hepatectomy	Direct suture of IVC	Alive without disease, 60 mo postoperative
2	Liver metastasis	1	20.0	Standard with switching ¹	9	Extended right hepatectomy	IMV patch for HV, Direct suture of IVC	Alive with disease, 17 mo postoperative
3	Liver metastasis	2	9.0	Standard with switching ¹	23	Extended right hepatectomy	IMV patch for HV and IVC	Alive with disease, 10 mo postoperative
4	Liver metastasis	1	6.0	Oblique ² (right)	26	Right hepatectomy	IMV patch graft for IVC	Died of disease, 27 mo postoperative
5	Liver metastasis	4	2.5	Oblique ² (right)	20	Partial resection	IMV patch graft for IVC and HV	Alive without disease, 15 mo postoperative
6	Liver metastasis	10	18.0	Oblique ² (right)	7	Right hepatectomy, partial resection	Direct suture of IVC	Died of disease, 8 mo postoperative
7	Liver metastasis	15	5.5	Oblique ² (right)	7	Extended anterior sectionectomy, partial resection	Direct suture of IVC	Died of disease, 9 mo postoperative
8	Liver metastasis	9	5.5	Oblique ² (left)	10	Segmentectomy, partial resection	Direct suture of IVC and HVs	Alive without disease, 13 mo postoperative

¹Switching the cross-clamp; ²Oblique cross-clamping. IMV: Inferior mesenteric vein; IVC: Inferior vena cava; HVs: Hepatic veins; THVE: Total hepatic vascular exclusion.

of the IVC was made visible. Ligation and division of infradiaphragmatic veins had been made as necessary. For all 8 patients, the attachment between the liver and diaphragm was dissected, and the dorsal space of the suprahepatic IVC was dissected. Subsequently, the suprahepatic IVC was encircled gently and taped in preparation for cranial cross-clamping of the IVC. The infrahepatic IVC was also dissected circumferentially and encircled in preparation for caudal cross-clamping. Principally, THVE was not applied before completion of hepatic parenchymal transection. The final step of resection involved clamping of the caudal and cranial IVC prior to the resection and reconstruction of the involved IVC *via* THVE.

Other surgical procedures

The abdomen was opened *via* J-shape incision that included upper median and right oblique incisions. Tumor status and the relation between the tumors and major intrahepatic vasculature were confirmed by intraoperative ultrasonography. The liver was mobilized to the extent necessary for the planned surgery. The hepatic parenchyma was transected using the clamp-crushing method. Thin vessel branches were burned by electrocautery or soft coagulation devices. Thicker branches were ligated and divided. Intermittent Pringle's maneuver was applied routinely during the hepatic parenchymal transection using a 15-min/5-min period of clamping and release.

Evaluation of operative morbidity and mortality

The recorded postoperative complications were classified according to severity by using the Clavien-Dindo criteria (grades I - V). Hepatic failure was defined as serum level of total bilirubin > 5.0 mg/dL (equal to 85.5 μ mol/L) at postoperative day 5 or later. Operative mortality was defined as all in-hospital deaths and death

within 90 d after surgery.

Follow-up schedule and adjuvant chemotherapy

Follow-up after discharge involved CT or MRI evaluation every 4-6 mo and blood testing and physical examination every 1-6 mo for a total period of 5 years after the last intervention.

Statistical analysis

All numerical values were calculated as mean and SD or median and range.

RESULTS

The 8 patients included in this analysis consisted of 6 men and 2 women, with median age of 72-years-old (range: 36-78 years). Seven of the patients had a diagnosis of colorectal liver metastases and 1 had a diagnosis of hepatocellular carcinoma (Table 1). The mean diameter of the total resected tumors was 10.8 ± 7.3 cm. All patients had tumors involving the IVC, with or without confluence of the hepatic veins as shown in Figure 1.

The surgical procedures used for all 8 patients are listed in Table 1. For all, the initial surgical step was broad dissection of the space behind the IVC, after which the liver was lifted up by the surgeon's left hand to move it from the retrocaval space in order to control bleeding before and during THVE (retrocaval liver lifting maneuver). Standard THVE was applied to 3 patients (cases 1-3), for which the cranial cross-clamp for THVE was switched from the suprahepatic to retrohepatic levels or to the confluence of the major hepatic vein to shorten the duration of THVE (switching the cross-clamp). For the remaining 5 patients (cases 4-8), total ischemia of the whole liver was avoided by applying the

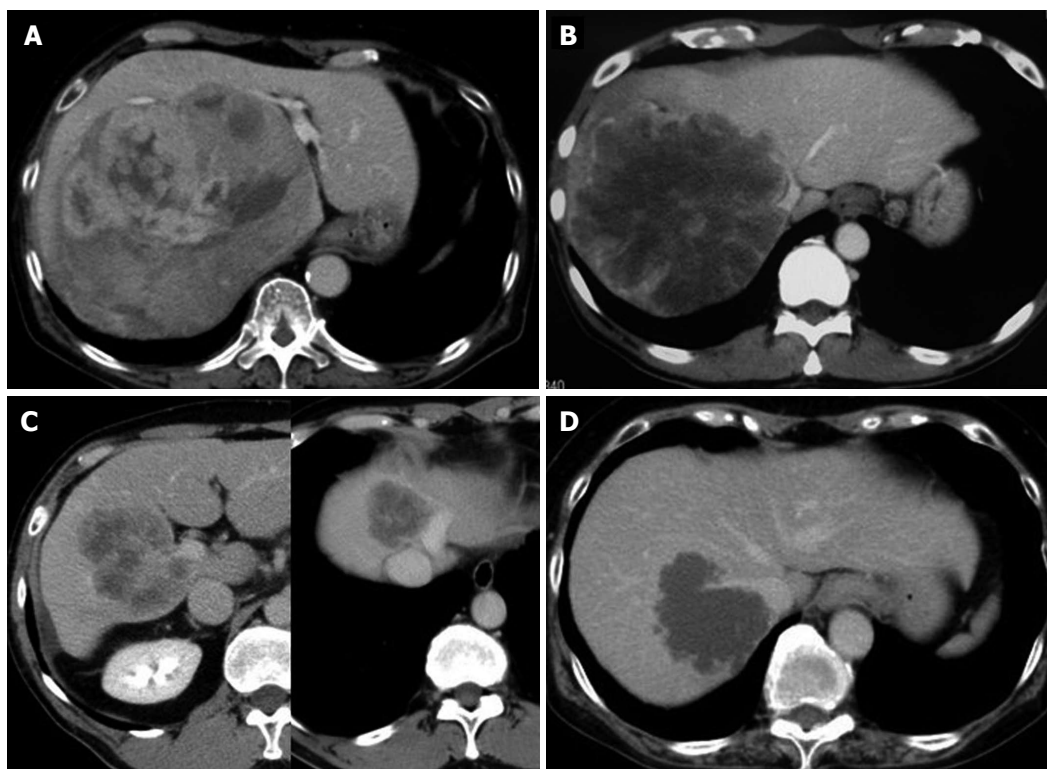


Figure 1 Abdominal computed tomography scan images of cases 1-4. A: Case 1: Lumen of the IVC compressed by a huge right liver tumor with expansive growth; B: Case 2: A large right liver tumor involving the right aspect of the IVC and the confluence of middle and left hepatic veins; C: Case 3: Two tumors were present, a right liver tumor involving the right portal vein and the portal vein bifurcation, and another tumor occupying the cranial part of segments 4 and 8 and involving the left aspect of the trunk of the middle and left hepatic veins; D: Case 4: A tumor involving the right dorsal aspect of the IVC and its confluence of the right hepatic vein. IVC: Inferior vena cava.

cranial clamp obliquely to maintain the hepatic venous outflow of the liver remnant (oblique cross-clamping). Detailed descriptions of these techniques are provided below.

Technical modifications for THVE

Retrocaval liver lifting maneuver: The liver cannot be detached from the IVC when the tumor involves the IVC. Instead, the retrocaval space behind the hepatic IVC should be dissected broadly to facilitate performance of standard or modified THVE (Figure 2A and B). In all 8 patients of this study, the IVC was compressed ventrally and the liver was lifted up from the retrocaval space by the surgeon's left hand (Figure 2C and D). This maneuver was quite useful for controlling bleeding during transection of the hepatic parenchyma near the IVC. With the help of this maneuver parenchymal transection can be completed safely before applying THVE, as shown in Figure 2D. The THVE procedure was applied at the last step of the combined resection and reconstruction of IVC, with the involved part of the IVC excised en-bloc with the liver specimen (Figure 2E). Theoretically, no bleeding should come from the IVC under THVE, but a significant amount of backflow bleeding often comes from the cut orifice of IVC during THVE. For all 8 patients in this study, compressing the IVC upward from the retrocaval space, by means of

the surgeon's left hand, was effective for controlling backflow bleeding from the cut orifice of the IVC under THVE (Figure 2E).

Switching the cross-clamp: Standard THVE cannot be avoided for combined resection of IVC involving the major hepatic vein of the liver remnant, as was performed in case 3 of this study (Figure 3A). After removal of the specimen and completion of the repair of the IVC under standard THVE, the position of the cranial IVC cross-clamp was switched from the suprahepatic IVC to the IVC confluence of the resected hepatic vein to be reconstructed (Figure 3C). Then, the IVC blood flow was restored to stabilize systemic hemodynamics.

Another surgical situation in this study involved switching of the cross-clamp of the suprahepatic IVC to the retrohepatic level, as performed in case 1. The tumor status is shown in Figure 1A. At the first step of this intervention, standard THVE was applied for resection of large hepatocellular carcinoma that involved retrohepatic IVC massively. Both the tumor and the involved wall of the IVC were resected under standard THVE. After repairing the IVC defect around the confluence of the hepatic vein, the suprahepatic IVC cross-clamp was switched to the level just below the hepatic vein confluence. Then, the portal triad occlusion was released to restore the blood flow of the liver remnant, after which

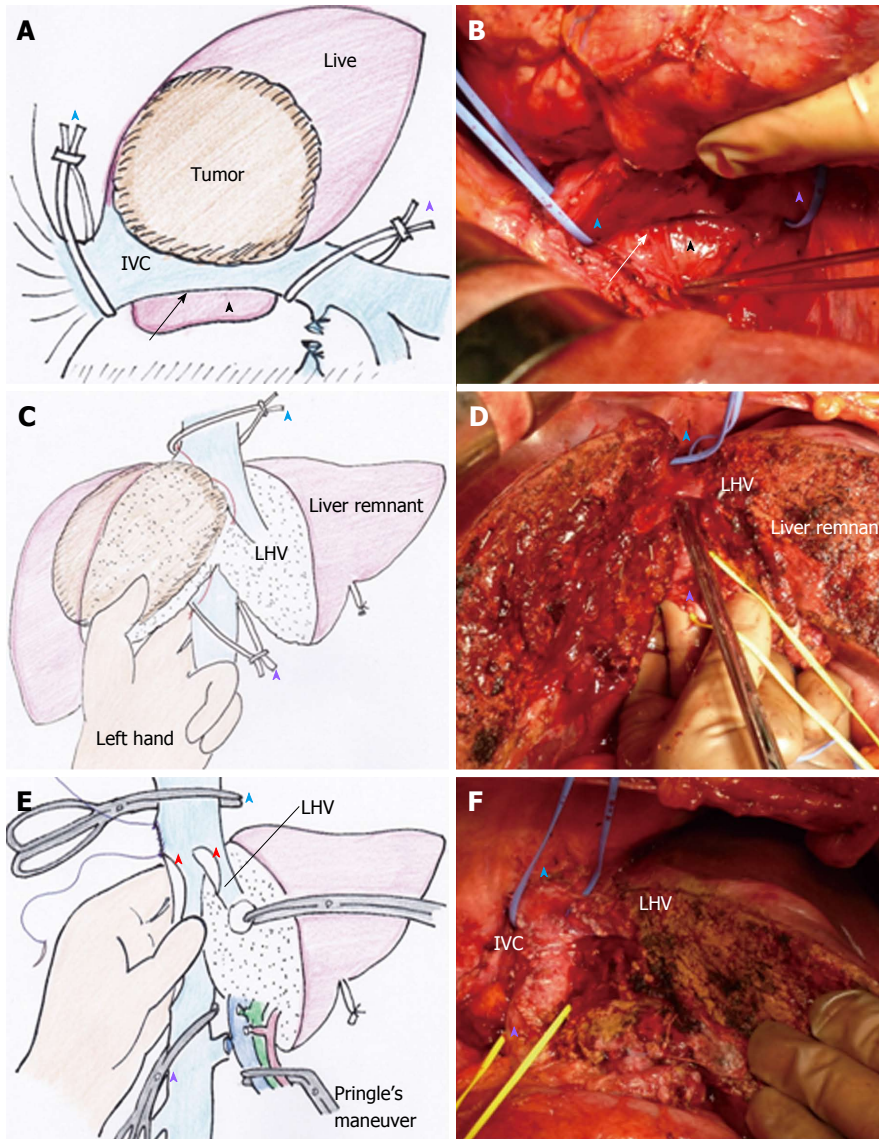


Figure 2 Retrocaval liver lifting maneuver, performed in case 2. A (illustration) and B (intraoperative image): The retrocaval space (arrow) was dissected broadly from the right lateral view toward the inner aspect of Spiegel's lobe (black arrowhead), after which the supra- and infrahepatic IVC were taped to prepare cross-clamping for THVE (blue arrowhead and purple arrowhead); C (illustration) and D (intraoperative image): The index and middle fingers of the surgeon's left hand were placed into the dissected retrocaval space, and the IVC was compressed ventrally to control bleeding around the IVC during deep parenchymal transection, after which the thumb finger of the surgeon's left hand was used to spread the transection plane of the liver (C, which also shows the tumor status); D: Hepatic parenchymal transection is completed, except for the IVC involved site, before applying THVE; E (illustration) and F (intraoperative image): The liver specimen was excised along with the involved IVC and LHV wall (red arrowheads), and the backflow bleeding from the cut orifice of IVC was controlled by pinching the IVC using the surgeon's left hand from its placement in the retrocaval space; F shows the view after reconstruction of IVC and LHV. See Figure 1B for tumor status. IVC: Inferior vena cava; LHV: Left hepatic vein; THVE: Total hepatic vascular exclusion.

the retrohepatic IVC was repaired without prolonging the ischemic time of the liver.

Oblique cranial cross-clamping: When the space between the right and middle hepatic veins is free from involvement, venous drainage of the residual liver can be preserved during vascular exclusion by applying the cranial cross-clamping obliquely (Figure 4A). For this purpose, the retrocaval space must be dissected sufficiently in advance, same as shown in Figure 2A. Prior to this step, hepatic parenchymal transection had been completed to facilitate visualization of the anterior aspect of the hepatic IVC (Figure 4A and B). In the next step,

the vascular clamp was inserted behind the IVC obliquely, preserving the outflow orifice of the hepatic vein of the liver remnant (Figure 4A and B). By applying this modification of the THVE procedure, ischemic damage was avoided, as was intestinal congestion. In patients of this study for whom the right liver tumor involved the IVC massively around the orifice of right hepatic vein (RHV) (as in cases 4-7), the cranial IVC cross-clamp was applied from the right cranial side to the left caudal side of the IVC to allow venous drainage of the trunk of middle and left hepatic veins (MHV + LHV) (Figure 4A). In patients of this study for whom the left liver tumor involved the trunk of MHV + LHV (as in case 8), the

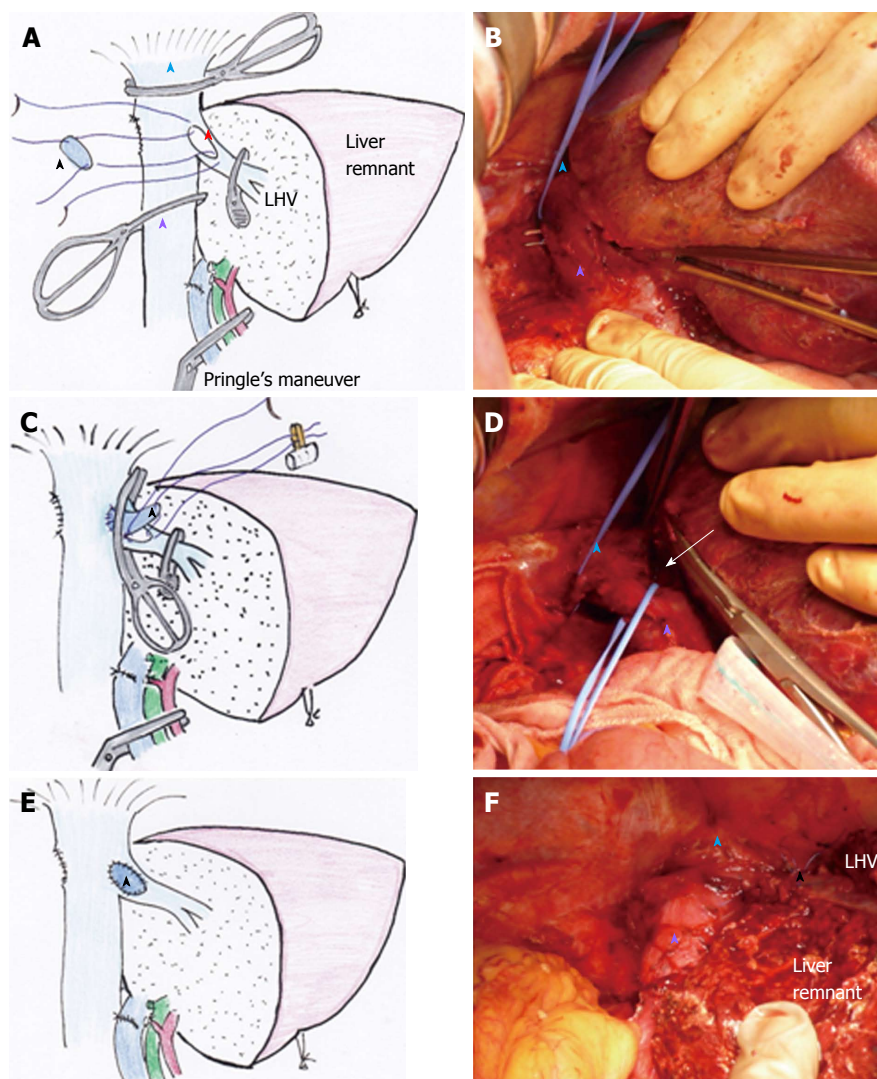


Figure 3 Switching the cross-clamp, performed in case 3. A (illustration) and B (intraoperative image): The right liver and involved right wall of the LHV and a part of the IVC wall had been resected en-bloc under standard THVE (red star indicates the orifice of resected IVC and LHV), before which the suprahepatic IVC was taped (blue arrowhead, blue tape), and the caudal cross-clamp was placed just under the confluence of LHV to the retrocaval space that had been already dissected (B). The defect of the confluence of the IVC and LHV was to be reconstructed by using an IMV patch graft (black arrowhead); C (illustration) and D (intraoperative image): After suturing the IMV patch graft to the IVC part of the defect, the IVC cross-clamps were removed and the clamp was switched to the confluence of the LHV to restore the systemic circulation via the IVC. The space for switching the clamp was spread by the caudal blue tape (white arrow in D); E (illustration) and F (intraoperative image): The view after reconstruction is shown. See Figure 1C for tumor status. IMV: Inferior mesenteric vein; IVC: Inferior vena cava; LHV: Left hepatic vein; THVE: Total hepatic vascular exclusion.

clamp was applied from the left cranial line to the right caudal line to preserve the outflow of the RHV. In the 5 patients who represented these two special situations, the THVE duration presented in Table 1 equates to the occlusion time of oblique cross-clamping of the IVC.

Operative parameters and postoperative course

The mean values of the operative parameters for the total 8 patients in this study are presented in Table 2. In no case did the THVE time exceed 30 min. Results from biochemical liver function tests and prothrombin time indicated the smooth recovery of liver function during the first postoperative week. In no case did the maximum serum total bilirubin level exceed 5 mg/mL, and no patient developed liver failure. For all of the

patients, the serum total bilirubin levels gradually decreased during the first postoperative week to below 2 mg/mL (equal to 34.2 μ mol/L) by day 7. No patient showed a prothrombin time less than 50% at any time during the postoperative period. In addition, no patient experienced a complication of Clavien-Dindo grade III or higher and there was no case of operative mortality. The postoperative complications that occurred included leg edema, pleural effusion, refractory ascites, and wound infection ($n = 1$ each). No patient required reoperation, subsequent surgical or radiological interventions, or management in the intensive care unit, and all patients were discharged within a month after the surgery. All of the reconstructed vessels remained patent through the end of follow-up.

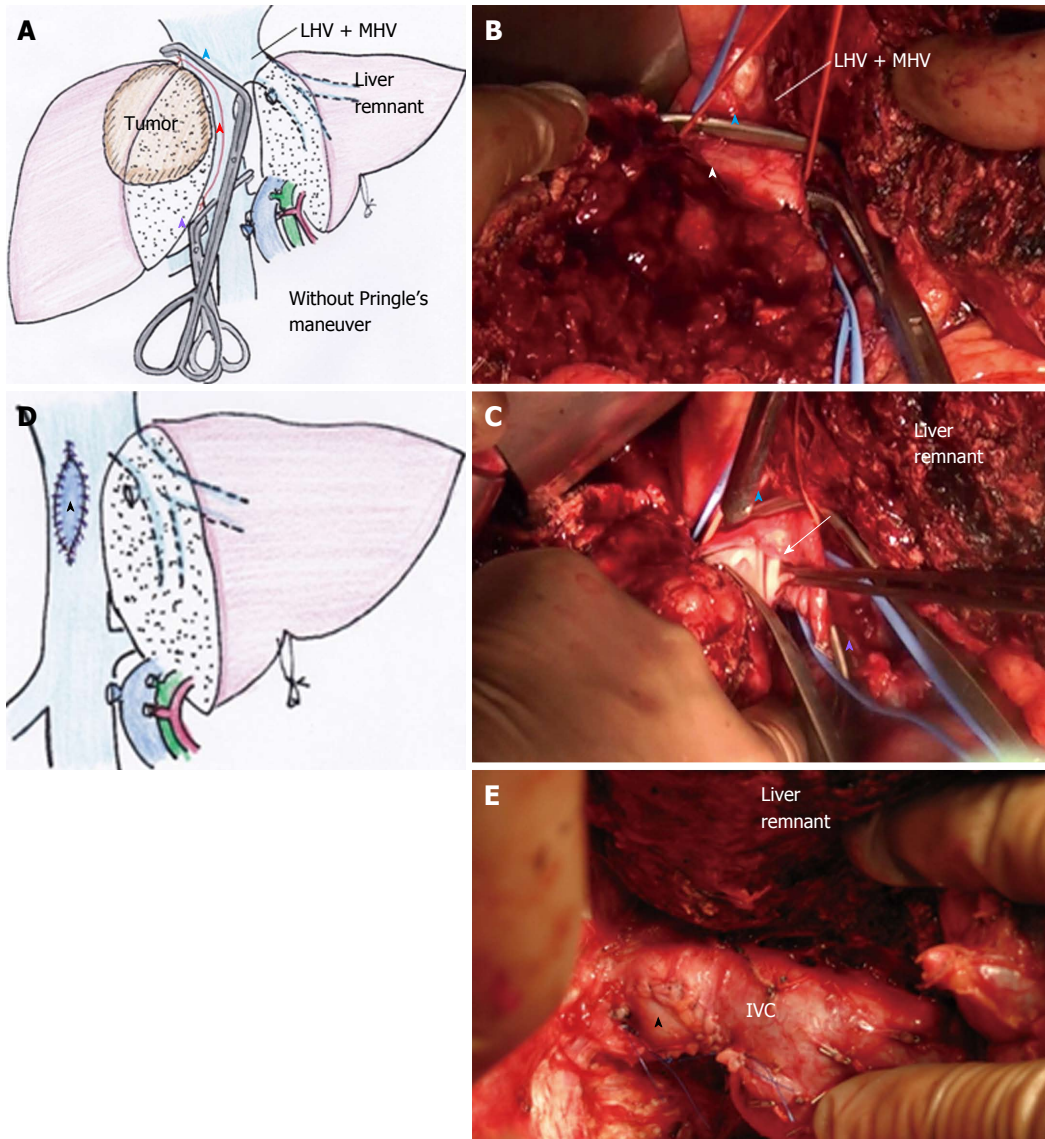


Figure 4 Oblique cranial cross-clamping, performed in case 4. A (illustration) and B (intraoperative image): The trunk of LHV + MHV was free from tumor involvement, while the right aspect of the IVC was involved extensively (red arrowhead). After completion of hepatic parenchymal transection, the cranial IVC cross-clamp (blue arrowhead) was applied obliquely between the tumor-involved IVC and the trunk of LHV + MHV preserving outflow of the LHV + MHV trunk, which was possible because the retrocaval space had been dissected sufficiently. Then, the involved IVC wall (white arrowhead in B) and the liver was resected *en-bloc* under modified THVE; C (intraoperative image): The involved IVC wall was cut away with scissors (arrow) between the oblique cranial (blue arrowhead) and caudal (purple arrowhead) cross-clamps; D (illustration) and E (intraoperative image): The large cut orifice of IVC was reconstructed with IMV patch graft (black arrowhead). See Figure 1D for tumor status. IMV: Inferior mesenteric vein; IVC: Inferior vena cava; LHV: Left hepatic vein; THVE: Total hepatic vascular exclusion.

Survival

All patients returned to usual active life after discharge. The 1-year survival rate was 71%. Individual outcomes for each patient are presented in Table 1. At the date of this report, case 1 was alive without disease (5 years after surgery) and cases 6 and 7 presented with early multiple tumor recurrence in the liver remnant and died of rapid progression at 8 and 9 mo respectively.

DISCUSSION

Liver tumors involving IVC or its junction of major hepatic veins represent situations in which THVE is needed for curative resection. Such surgery is fraught

with challenges, including unstable systemic circulation, ischemic damage of the liver and high risk of morbidity. Minimizing the duration and extent of exclusion is key to increasing the safety of THVE^[2]. To this end, the present study highlights the feasibility of three technical modifications of THVE. The techniques include: (1) retrocaval liver lifting maneuver; (2) switching the cross-clamp; and (3) oblique cranial cross-clamping, which minimized duration of THVE and ischemic damage of the liver. It is noteworthy that application of these modified techniques minimized occlusion time; in addition, recovery of liver function was smooth, no severe complication developed, and operative mortality was not experienced. These operative results are quite favorable,

Table 2 Operative parameters and postoperative course of 8 patients

Parameters	Values or number of patients
Operation time	482 ± 108 min
Blood loss	1778 ± 1233 mL
THVE duration	13.4 ± 8.4 min
Postoperative liver function	
TB (mg/dL)	
Maximum	2.01 (0.98-4.4)
POD7	1.08 (0.75-1.86)
AST (IU/L)	
Maximum	513 (238-1058)
POD7	30 (20-41)
ALT (IU/L)	
Maximum	319 (179-824)
POD7	64 (36-115)
PT (%)	
Minimum	64.4 (55.3-88.8)
POD7	88.1 (61.6-107.8)
Complications	
Clavien-Dindo classification	
I	2
II	1
≥ III	0
Operative mortality	0
Hospital stay (d)	15 (12-24)

AST: Aspartate amino transferase; PT: Prothrombin time; TB: Total bilirubin; ALT: Aspartate alanine aminotransferase; THVE: Total hepatic vascular exclusion.

particularly when compared to those reported by other studies^[1-3,8,10,11].

To date, only a limited number of studies of THVE for resection of liver tumors involving IVC are present in the publicly available literature, probably because the number of experiences in individual institutes has been small. The most distinctive features of the present study are the extremely short duration of THVE and favorable recovery after surgery. While the mean durations of THVE were 29 min to 78 min in the reports from very experienced institutes^[1,2,7,8], the mean THVE duration in the present study was only 13.4 ± 8.4 min. The mortality rates of hepatectomy with IVC resection were 4.5% to 25% in the previous reports^[1-4,8,10,11,15]. In particular, the morbidity and mortality rates were quite high when standard THVE was applied frequently, even when hypothermic perfusion was used to attenuate the ischemic liver damage. In the previous reports, the major causes of mortality were liver failure and sepsis^[1,3,4,8,11], both of which are likely to be relevant to ischemic injury of the liver and intestinal congestion since they may facilitate bacterial translocation. Of course, simple comparison to the present case series is not possible due to the differences in severity of tumor status and underlying conditions. Nevertheless, minimized duration of THVE might have contributed to the favorable postoperative course in the present study.

Hand manipulation of the IVC from the broadly dissected retrocaval space is a unique method to decrease bleeding around the IVC. This procedure is also essential

as a preparation for modifying the THVE procedure to improve its safety. When the tumor involves the IVC, the liver cannot be freed from the IVC and Belghiti's liver hanging maneuver is not possible (and is rather a contraindication)^[16]. In such a situation, wide dissection of the retrocaval space makes subsequent procedures safer. Lifting-up the liver by hand from the retrocaval space proved quite useful to control bleeding from the hepatic parenchyma near the IVC and backflow bleeding from the cut orifice of the IVC during THVE. Although no bleeding is supposed to come from the IVC under THVE theoretically, significant amount of backflow bleeding, which occurs frequently, serves to disrupt and complicate the vascular reconstruction procedure of IVC. Sources of such backflow bleeding are lumbar veins, short hepatic veins, or small venous branches that extend into the major hepatic veins. Even with portal triad occlusion by Pringle's maneuver, blood flow into the liver from the diaphragm or lesser omentum can exist. Compressing the IVC by hand, from the retrocaval space, was shown in the present study to be quite useful and the only way to control backflow bleeding during THVE.

The damage associated with THVE includes both systemic circulatory instability (due to absence of venous return *via* the IVC) and total cessation of hepatic blood flow. These conditions cause congestion of the kidney and intestine, which may explain why the damage and morbidity after THVE is much higher than that experienced after inflow occlusion alone^[7]. In the current study, when the cranial IVC cross-clamp was switched from the supra- to the retrohepatic IVC (as performed in case 1), blood flow of the liver remnant was restored, thereby shortening the ischemic time of the liver remnant and intestine. When the clamp was switched to the confluence of hepatic vein of the liver remnant (as performed in case 3), IVC blood flow was restored, thereby resolving the systemic circulatory instability and renal congestion.

Oblique cranial IVC clamping is an option of standard THVE to avoid ischemic damage of the liver remnant as well as intestinal congestion; yet, this technique has not been precisely described in the literature. Even in the series of patients in this study with tumors with massive IVC involvement, the hepatic vein of the liver remnant side was free from involvement in many of the cases, and this is reported in other studies as well^[1,8]. Such a situation is good indication for oblique cross-clamping. Sufficient dissection of the retrocaval space and completion of hepatic parenchymal transection in advance are essential for application of this method.

The timing of applying THVE may be one of the most important issues underlying its efficacy and safety. In most of the studies reported in the literature, THVE was applied during both parenchymal transection and combined resection/reconstruction of IVC^[1,7,8]. This might be one of the reasons for the characteristic long occlusion time in the studies previous to ours. The primary policy of our hospital, however, is to make

every effort to minimize the duration of THVE. Because the retrocaval liver lifting maneuver makes it possible to complete the hepatic parenchymal transection without much bleeding, THVE was applied at the final step only for IVC resection and reconstruction. We believe that its success depends primarily on the procedures that had been applied prior to the application of THVE, including sufficient dissection of the retrocaval space and smooth completion of the hepatic parenchymal transection.

The small number of included patients may be a limitation of the present study. In general, the number of patients requiring THVE for hepatectomy with IVC reconstruction is rather small for a single institute, such as ours, as reflected in the previous studies^[1-4,10,11,15]. The accumulated literature on this topic includes no reports that provide a definitive description of modified procedures of THVE, especially the retrocaval liver lifting maneuver and oblique cranial cross-clamping that are described here for the first time. These techniques can be strategies to decrease the risk of disastrous bleeding and ischemic liver damage. Sharing these data with other surgeons will serve to increase the safety and feasibility of surgery for liver tumors involving IVC.

In conclusion, the retrocaval liver lifting maneuver and modifications of IVC cross-clamping are useful to attenuate damage related to THVE. The knowledge and techniques that have arisen from the current analysis of our case series may help to improve the surgical techniques and outcomes for advanced liver tumors involving IVC.

COMMENTS

Background

Total hepatic vascular exclusion (THVE) is needed during hepatectomy for liver tumors involving inferior vena cava (IVC). However, THVE carries a much greater risk than inflow occlusion alone.

Research frontiers

The authors performed technical modifications that shortened the duration of THVE, thereby reducing the risk of damage.

Innovations and breakthroughs

The technical modifications described in this study for THVE included the retrocaval liver lifting maneuver, switching of the cranial IVC cross-clamp, and oblique cranial IVC cross-clamping. With these techniques, the mean duration of THVE was shortened remarkably, compared to that reported in the past literature. Moreover, postoperative recovery of liver function was smooth without any severe complications.

Applications

The retrocaval liver lifting maneuver and modifications of cranial cross-clamping minimized the duration of THVE. Thus, these techniques might help to decrease risk of liver damage and increase likelihood of favorable postoperative courses in patients who undergo hepatectomy requiring THVE.

Terminology

THVE is a method to control bleeding during hepatectomy by occluding both inflow and outflow of the liver. THVE is required especially for resection of liver tumors involving IVC.

Peer-review

The authors suggest some technical modifications of the THVE. The study is clearly planned and correctly managed. The technical details of the three variations are clearly explained as well as the figures.

REFERENCES

- 1 **Azoulay D**, Andreani P, Maggi U, Salloum C, Perdigao F, Sebah M, Lemoine A, Adam R, Castaing D. Combined liver resection and reconstruction of the supra-renal vena cava: the Paul Brousse experience. *Ann Surg* 2006; **244**: 80-88 [PMID: 16794392 DOI: 10.1097/01.sla.0000218092.83675.bc]
- 2 **Azoulay D**, Pascal G, Salloum C, Adam R, Castaing D, Tranecol N. Vascular reconstruction combined with liver resection for malignant tumours. *Br J Surg* 2013; **100**: 1764-1775 [PMID: 24227362 DOI: 10.1002/bjs.9295]
- 3 **Madariaga JR**, Fung J, Gutierrez J, Bueno J, Iwatsuki S. Liver resection combined with excision of vena cava. *J Am Coll Surg* 2000; **191**: 244-250 [PMID: 10989898 DOI: 10.1016/S1072-7515(00)00362-8]
- 4 **Hemming AW**, Mekeel KL, Zendejas I, Kim RD, Sicklick JK, Reed AI. Resection of the liver and inferior vena cava for hepatic malignancy. *J Am Coll Surg* 2013; **217**: 115-124; discussion 124-125 [PMID: 23376028 DOI: 10.1016/j.jamcollsurg.2012.12.003]
- 5 **Heaney JP**, Stanton WK, Halbert DS, Seidel J, Vice T. An improved technic for vascular isolation of the liver: experimental study and case reports. *Ann Surg* 1966; **163**: 237-241 [PMID: 4286023 DOI: 10.1097/0000658-196602000-00013]
- 6 **Huguet C**, Nordlinger B, Galopin JJ, Bloch P, Gallot D. Normo-thermic hepatic vascular exclusion for extensive hepatectomy. *Surg Gynecol Obstet* 1978; **147**: 689-693 [PMID: 715645]
- 7 **Belghiti J**, Noun R, Zante E, Ballet T, Sauvanet A. Portal triad clamping or hepatic vascular exclusion for major liver resection. A controlled study. *Ann Surg* 1996; **224**: 155-161 [PMID: 8757378 DOI: 10.1097/0000658-199608000-00007]
- 8 **Emre S**, Schwartz ME, Katz E, Miller CM. Liver resection under total vascular isolation. Variations on a theme. *Ann Surg* 1993; **217**: 15-19 [PMID: 8424696 DOI: 10.1097/0000658-199301000-00004]
- 9 **Smyrniotis VE**, Kostopanagiotou GG, Gamaletsos EL, Vassiliou JG, Voros DC, Fotopoulos AC, Contis JC. Total versus selective hepatic vascular exclusion in major liver resections. *Am J Surg* 2002; **183**: 173-178 [PMID: 11918884 DOI: 10.1016/S0002-9610(01)00864-9]
- 10 **Dubay D**, Gallinger S, Hawryluck L, Swallow C, McCluskey S, McGilvray I. In situ hypothermic liver preservation during radical liver resection with major vascular reconstruction. *Br J Surg* 2009; **96**: 1429-1436 [PMID: 19918862 DOI: 10.1002/bjs.6740]
- 11 **Malde DJ**, Khan A, Prasad KR, Toogood GJ, Lodge JP. Inferior vena cava resection with hepatectomy: challenging but justified. *HPB (Oxford)* 2011; **13**: 802-810 [PMID: 21999594 DOI: 10.1111/j.1477-2574.2011.00364.x]
- 12 **Fu SY**, Lai EC, Li AJ, Pan ZY, Yang Y, Sun YM, Lau WY, Wu MC, Zhou WP. Liver resection with selective hepatic vascular exclusion: a cohort study. *Ann Surg* 2009; **249**: 624-627 [PMID: 19300226 DOI: 10.1097/SLA.0b013e31819ed212]
- 13 **Cherqui D**, Malassagne B, Colau PI, Brunetti F, Rotman N, Fagniez PL. Hepatic vascular exclusion with preservation of the caval flow for liver resections. *Ann Surg* 1999; **230**: 24-30 [PMID: 10400032 DOI: 10.1097/0000658-199907000-00004]
- 14 **Azoulay D**, Maggi U, Lim C, Malek A, Compagnon P, Salloum C, Laurent A. Liver resection using total vascular exclusion of the liver preserving the caval flow, in situ hypothermic portal perfusion and temporary porta-caval shunt: a new technique for central tumors. *Hepatobiliary Surg Nutr* 2014; **3**: 149-153 [PMID: 25019076 DOI: 10.3978/j.issn.2304-3881.2014.05.02]
- 15 **Lodge JP**, Ammori BJ, Prasad KR, Bellamy MC. Ex vivo and in situ resection of inferior vena cava with hepatectomy for colorectal

metastases. *Ann Surg* 2000; **231**: 471-479 [PMID: 10749606 DOI: 10.1097/00000658-200004000-00004]

16 **Belghiti J**, Guevara OA, Noun R, Saldinger PF, Kianmanesh R.

Liver hanging maneuver: a safe approach to right hepatectomy without liver mobilization. *J Am Coll Surg* 2001; **193**: 109-111 [PMID: 11442247 DOI: 10.1016/S1072-7515(01)00909-7]

P- Reviewer: Aurello P **S- Editor:** Gong ZM

L- Editor: A **E- Editor:** Liu SQ





Published by **Baishideng Publishing Group Inc**

8226 Regency Drive, Pleasanton, CA 94588, USA

Telephone: +1-925-223-8242

Fax: +1-925-223-8243

E-mail: bpgoffice@wjgnet.com

Help Desk: <http://www.wjgnet.com/esps/helpdesk.aspx>

<http://www.wjgnet.com>

