

World Journal of *Hepatology*

World J Hepatol 2017 June 8; 9(16): 715-756





Contents

Three issues per month Volume 9 Number 16 June 8, 2017

REVIEW

- 715 Non-alcoholic fatty liver disease: An expanded review

Benedict M, Zhang X

MINIREVIEWS

- 733 Abdominal cross-sectional imaging of the associating liver partition and portal vein ligation for staged hepatectomy procedure

Zerial M, Lorenzin D, Risaliti A, Zuiani C, Girometti R

ORIGINAL ARTICLE

Prospective Study

- 746 Low bone mineral density and the severity of cholestasis in biliary atresia

Homchan K, Chaiwatanarat T, Udomsinprasert W, Chongsrisawat V, Poovorawan Y, Honsawek S

CASE REPORT

- 752 Successful surgical resection of ruptured cholangiolocellular carcinoma: A rare case of a primary hepatic tumor

Akabane S, Ban T, Kouriki S, Tanemura H, Nakazaki H, Nakano M, Shinozaki N

ABOUT COVER

Editorial Board Member of *World Journal of Hepatology*, Mehmet Celikbilek, MD, Assistant Professor, Department of Gastroenterology, Bozok University, 66200 Yozgat, Turkey

AIM AND SCOPE

World Journal of Hepatology (*World J Hepatol*, *WJH*, online ISSN 1948-5182, DOI: 10.4254), is a peer-reviewed open access academic journal that aims to guide clinical practice and improve diagnostic and therapeutic skills of clinicians.

WJH covers topics concerning liver biology/pathology, cirrhosis and its complications, liver fibrosis, liver failure, portal hypertension, hepatitis B and C and inflammatory disorders, steatohepatitis and metabolic liver disease, hepatocellular carcinoma, biliary tract disease, autoimmune disease, cholestatic and biliary disease, transplantation, genetics, epidemiology, microbiology, molecular and cell biology, nutrition, geriatric and pediatric hepatology, diagnosis and screening, endoscopy, imaging, and advanced technology. Priority publication will be given to articles concerning diagnosis and treatment of hepatology diseases. The following aspects are covered: Clinical diagnosis, laboratory diagnosis, differential diagnosis, imaging tests, pathological diagnosis, molecular biological diagnosis, immunological diagnosis, genetic diagnosis, functional diagnostics, and physical diagnosis; and comprehensive therapy, drug therapy, surgical therapy, interventional treatment, minimally invasive therapy, and robot-assisted therapy.

We encourage authors to submit their manuscripts to *WJH*. We will give priority to manuscripts that are supported by major national and international foundations and those that are of great basic and clinical significance.

INDEXING/ABSTRACTING

World Journal of Hepatology is now indexed in Emerging Sources Citation Index (Web of Science), PubMed, PubMed Central, and Scopus.

FLYLEAF

I-IV Editorial Board

EDITORS FOR THIS ISSUE

Responsible Assistant Editor: *Xiang Li*
Responsible Electronic Editor: *Dan Li*
Proofing Editor-in-Chief: *Lian-Sheng Ma*

Responsible Science Editor: *Fung-Fung Ji*
Proofing Editorial Office Director: *Jin-Lei Wang*

NAME OF JOURNAL
World Journal of Hepatology

ISSN
ISSN 1948-5182 (online)

LAUNCH DATE
October 31, 2009

FREQUENCY
36 Issues/Year (8th, 18th, and 28th of each month)

EDITORS-IN-CHIEF
Clara Balsano, PhD, Professor, Departement of Biomedicine, Institute of Molecular Biology and Pathology, Rome 00161, Italy

Wan-Long Chuang, MD, PhD, Doctor, Professor, Hepatobiliary Division, Department of Internal Medicine, Kaohsiung Medical University Hospital, Kaohsiung Medical University, Kaohsiung 807, Taiwan

EDITORIAL BOARD MEMBERS
All editorial board members resources online at <http://www.wjgnet.com>

www.wjgnet.com/1948-5182/editorialboard.htm

EDITORIAL OFFICE
Xiu-Xia Song, Director
World Journal of Hepatology
Baishideng Publishing Group Inc
7901 Stoneridge Drive,
Suite 501, Pleasanton, CA 94588, USA
Telephone: +1-925-2238242
Fax: +1-925-2238243
E-mail: editorialoffice@wjgnet.com
Help Desk: <http://www.f6publishing.com/helpdesk>
<http://www.wjgnet.com>

PUBLISHER
Baishideng Publishing Group Inc
7901 Stoneridge Drive,
Suite 501, Pleasanton, CA 94588, USA
Telephone: +1-925-2238242
Fax: +1-925-2238243
E-mail: bpgoffice@wjgnet.com
Help Desk: <http://www.f6publishing.com/helpdesk>
<http://www.wjgnet.com>

PUBLICATION DATE
June 8, 2017

COPYRIGHT
© 2017 Baishideng Publishing Group Inc. Articles published by this Open Access journal are distributed under the terms of the Creative Commons Attribution Non-commercial License, which permits use, distribution, and reproduction in any medium, provided the original work is properly cited, the use is non commercial and is otherwise in compliance with the license.

SPECIAL STATEMENT
All articles published in journals owned by the Baishideng Publishing Group (BPG) represent the views and opinions of their authors, and not the views, opinions or policies of the BPG, except where otherwise explicitly indicated.

INSTRUCTIONS TO AUTHORS
<http://www.wjgnet.com/bpg/gerinfo/204>

ONLINE SUBMISSION
<http://www.f6publishing.com>

Successful surgical resection of ruptured cholangiolocellular carcinoma: A rare case of a primary hepatic tumor

Shota Akabane, Takushiro Ban, Shunsaku Kouriki, Hiroyuki Tanemura, Haruhiro Nakazaki, Masayuki Nakano, Nobuaki Shinozaki

Shota Akabane, Takushiro Ban, Shunsaku Kouriki, Hiroyuki Tanemura, Haruhiro Nakazaki, Nobuaki Shinozaki, Department of Surgery, Shonan Fujisawa Tokushukai Hospital, Fujisawa City, Kanagawa 251-0041, Japan

Masayuki Nakano, Department of Diagnostic Pathology, Shonan Fujisawa Tokushukai Hospital, Fujisawa City, Kanagawa 251-0041, Japan

Author contributions: All authors contributed to the acquisition of the data and to the writing and revision of this manuscript.

Institutional review board statement: This case report was reviewed and approved by Shonan Fujisawa Tokushukai Hospital Institutional Review Board.

Informed consent statement: The patient has provided informed consent for the publication of this case report and accompanying images.

Conflict-of-interest statement: The authors declare that they have no competing interests.

Open-Access: This article is an open-access article which was selected by an in-house editor and fully peer-reviewed by external reviewers. It is distributed in accordance with the Creative Commons Attribution Non Commercial (CC BY-NC 4.0) license, which permits others to distribute, remix, adapt, build upon this work non-commercially, and license their derivative works on different terms, provided the original work is properly cited and the use is non-commercial. See: <http://creativecommons.org/licenses/by-nc/4.0/>

Manuscript source: Unsolicited manuscript

Correspondence to: Shota Akabane, MD, Department of Surgery, Shonan Fujisawa Tokushukai Hospital, 1-5-1 Kandai Tsujido, Fujisawa City, Kanagawa 251-0041, Japan. akap.sh.3381@gmail.com
Telephone: +81-80-34641295
Fax: +81-426-745266

Received: January 17, 2017

Peer-review started: January 19, 2017

First decision: March 8, 2017

Revised: April 3, 2017

Accepted: April 23, 2017

Article in press: April 24, 2017

Published online: June 8, 2017

Abstract

Spontaneous rupture is one of the most fatal complications of hepatic tumors such as hepatocellular carcinoma. In fact, many studies have shown that the in-hospital and 30-d mortality rates are as high as 25%-100%. Cholangiolocellular carcinoma (CoCC) is a rare primary hepatic tumor, usually small in size, that is thought to originate from the ductules and/or canals of Hering. Here, we present a case of spontaneous rupture of a CoCC that was successfully resected by radical surgery. Although CoCC is a rare primary hepatic tumor, it demonstrates certain specific clinical features, including a better prognosis than for other primary liver cancers, and thus should be distinguished from those other cancers. Moreover, CoCC can appear as a ruptured huge tumor, and when it does, radical hepatectomy can be an effective measure to achieve both absolute hemostasis and curability of tumor.

Key words: Hepatic tumor; Rupture; Cholangiolocellular carcinoma; Resection; Pathology

© The Author(s) 2017. Published by Baishideng Publishing Group Inc. All rights reserved.

Core tip: Spontaneous rupture is one of the most fatal complications of hepatic tumors such as hepatocellular carcinoma. Here, we present a case of spontaneous rupture of a cholangiolocellular carcinoma (CoCC) that was successfully resected by radical surgery. Although CoCC is a rare primary hepatic tumor, it demonstrates certain specific clinical features, including a better prognosis

than for other primary liver cancers, and thus should be distinguished from those other cancers. Moreover, CoCC can appear as a ruptured huge tumor, and when it does, radical hepatectomy can be an effective measure to achieve both absolute hemostasis and curability of tumors.

Akabane S, Ban T, Kouriki S, Tanemura H, Nakazaki H, Nakano M, Shinozaki N. Successful surgical resection of ruptured cholangiolocellular carcinoma: A rare case of a primary hepatic tumor. *World J Hepatol* 2017; 9(16): 752-756 Available from: URL: <http://www.wjgnet.com/1948-5182/full/v9/i16/752.htm> DOI: <http://dx.doi.org/10.4254/wjh.v9.i16.752>

INTRODUCTION

Spontaneous tumor rupture is one of the most fatal complications of hepatic tumors such as hepatocellular carcinoma (HCC). In fact, many studies have shown that the in-hospital and 30-d mortality rates are as high as 25%-100%^[1]. Cholangiolocellular carcinoma (CoCC) is a rare primary hepatic tumor first described by Steiner and Higinson^[2]. Subsequent reports characterized it based on small cords resembling cholangioles (canals of Hering). Although CoCC was previously classified as a special type of intrahepatic cholangiocarcinoma (ICC), as a result of recent advancements in the field, it is now considered to originate from hepatic stem/progenitor cells.

Here, we present a case of spontaneous rupture of a CoCC that was successfully resected by radical surgery.

CASE REPORT

An 80-year-old Japanese woman presented with right upper abdominal pain that had developed within 2-3 h along with hypotension. She had not experienced vomiting or diarrhea. Her medical history included hypertension and dyslipidemia. On physical examination, there was tenderness in the right upper abdomen, and her body temperature was 36.5 °C. Laboratory tests were negative for anemia and thrombocytopenia and revealed bilirubin, transaminase and albumin levels in the normal range. A contrast-enhanced computed tomography (CT) scan showed a huge tumor (12 cm × 7 cm × 9 cm) located in the right anterior segment of the liver along with extrahepatic hematoma (Figure 1).

The tumor was hyperattenuating relative to the noncancerous liver parenchyma in the arterial phase and was hypo- or isoattenuating in the delayed phase, with central necrosis appearing as a low-density area. The axial T1-weighted gradient-echo image showed a hypointense mass in the right anterior segment of the liver, and the axial T2-weighted spin-echo image with fat suppression showed an isointense mass with a large central hyperintense area (Figure 2). In addition, the penetrating portal tract showed hyperintensity.

The patient was subsequently diagnosed with a ruptured hepatic tumor. Although emergency transcatheter

arterial embolization (TAE) was considered, she was hemodynamically stable due to fluid resuscitation and blood transfusion. As a result, primary right hemihepatectomy was performed. Following surgery, the patient was admitted to the intensive care unit and transferred to the general ward 5 d after surgery. Although it took time to improve her nutritional status and to rehabilitate her, she was discharged 30 d later without any complications.

Histologically, the tumor was mainly composed of small, monotonous glands formed into antler-like anastomosing patterns, embedded in the fibrous stroma to various degrees of fibrous stroma and lacking mucin production (Figure 3). The presence of CoCC cells was confirmed by positive staining for cytokeratin 19 (CK19) and membranous positive staining for epithelial membrane antigen (EMA), but no positive staining for hepatocyte paraffin 1 (HepPar1) was present (Figure 4).

So far, the patient has attended the outpatient clinic for follow-up for 1 year after surgery, with no signs of recurrence detected on CT scans.

DISCUSSION

This case highlights two important considerations. First, although CoCC is a rare primary hepatic tumor, it demonstrates certain specific clinical features and hence should be distinguished from other primary liver cancers, such as HCC or ICC. Second, to the best of our knowledge, this is the first report describing the presentation of a CoCC with spontaneous tumor rupture that was successfully resected.

CoCC is derived from the cholangioles or canals of Hering and is characterized by small cords resembling cholangioles and ductular reaction-like anastomosing glands in abundant fibrous stroma. The canals of Hering are found in portal tracts of all sizes, where the canals connect with the bile duct. The ductules contain hepatic progenitor cells that can differentiate into both hepatocytes and cholangiocytes. Therefore, in the case of tumors derived from hepatic progenitor cells, characteristics of hepatocytic and cholangiocytic differentiation can be alternately displayed within the same tumor.

The clinical characteristics and imaging features of CoCC are similar to those of HCC and ICC. Many CoCC patients are infected with hepatitis C virus or hepatitis B virus, and angiographical hypervascularity is one of the characteristics of CoCC^[3]; therefore, it is not surprising that CoCC has often been mistaken for HCC in the clinic^[4].

Histologically, the presence of CoCC cells is further confirmed by either positive staining for CK19 or membranous positive staining for mucin core protein 1 and/or membranous positive staining for EMA but negative staining for HepPar1.

Patients with CoCC demonstrate favorable long-term survival after curative surgery. CoCC has been shown to be less invasive in the portal vein, as the number of patients with remaining portal tracts within their tumors was significantly higher in a CoCC group than in an



Figure 1 Contrast enhanced computed tomography scan showed a tumor located in the right anterior compartment of the liver with extrahepatic hematoma. The tumors were hyperattenuating relative to the noncancerous liver parenchyma on arterial-phase (A) and hypo- or isoattenuating on delayed phase (B).

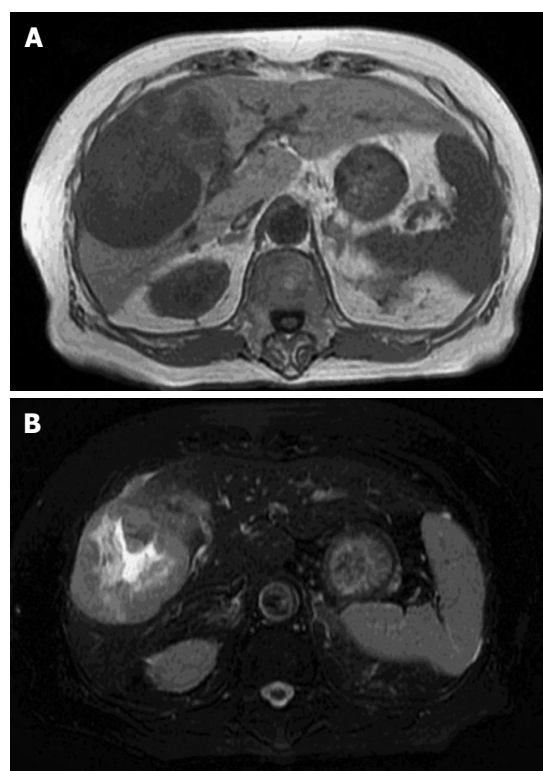


Figure 2 The axial T1-weighted gradient-echo image showed a hypointense mass in the right anterior segment of the liver (A), and the axial T2-weighted spin-echo image with fat suppression showed an isointense mass with a large central hyperintense area (B).

ICC group^[5]. Moreover, the number of patients with intrahepatic metastasis was significantly lower in a CoCC group than in an ICC group^[6]. Furthermore, the 5-year overall survival rate and recurrence-free survival rate were significantly higher in a CoCC group than in an ICC group^[7].

Spontaneous tumor rupture is one of the most fatal complications of hepatic tumors and is mainly determined by the growth characteristics of the tumor. The mechanism of tumor rupture has not been fully characterized; however, the literature^[8] suggests that the pathogenesis may be associated with expansive growth and intratumoral pressure, which may cause tumor vein compression and congestion. The rapid growth of tumors also results in an insufficient blood supply to the tumors *in vivo*, causing tumor hypoxia-ischemia to occur, in turn resulting in significant necrosis.

As mentioned previously, CoCC grows relatively slowly and is less invasive, which results in a smaller tumor size (mean: 3.5 cm) than for other hepatic tumors^[9]. To the best of our knowledge, this is the first report describing CoCC presenting as a huge tumor that had ruptured.

Emergency fluid resuscitation is a key therapeutic step for patients with hepatic tumor rupture. In particular, patients admitted to hospitals are treated with fast rehydration, anti-shock treatment, blood transfusion, and other supporting treatments to stabilize their circulation

so that transhepatic artery angiography and embolization (that is, TAE) can be performed for hemostasis. For patients with continued bleeding, primary surgeries are performed to stop the bleeding. Hepatectomy, however, not only can stop bleeding immediately but also can make the radical resection of hepatic lesions possible as well as allowing for better long-term outcomes. There is still a possibility of rebleeding, even with temporarily controlled bleeding, in the case of spontaneous hepatic tumor ruptures^[10,11]; hence, radical hepatectomy is an effective measure to address such emergencies. However, liver resection would be risky for patients with relatively poor liver function and/or severe liver cirrhosis^[12]. Thus, TAE is more advantageous during initial hemostasis in emergency procedures for patients with hepatic tumor ruptures, especially in the case of high-surgical-risk patients. Once initial hemostasis is achieved using active supportive therapy, the patients may undergo staged hepatectomy.

In the case described here, the tumor was so huge that TAE was assumed to be anatomically difficult. In addition, the patient was hemodynamically stable due to fluid resuscitation, and her hepatic function was competent; thus, primary right hemi-hepatectomy was performed as a radical treatment.

CoCC is a rare primary hepatic tumor that demonstrates a better prognosis than for other primary liver cancers, such as HCC or ICC, and thus should be dis-

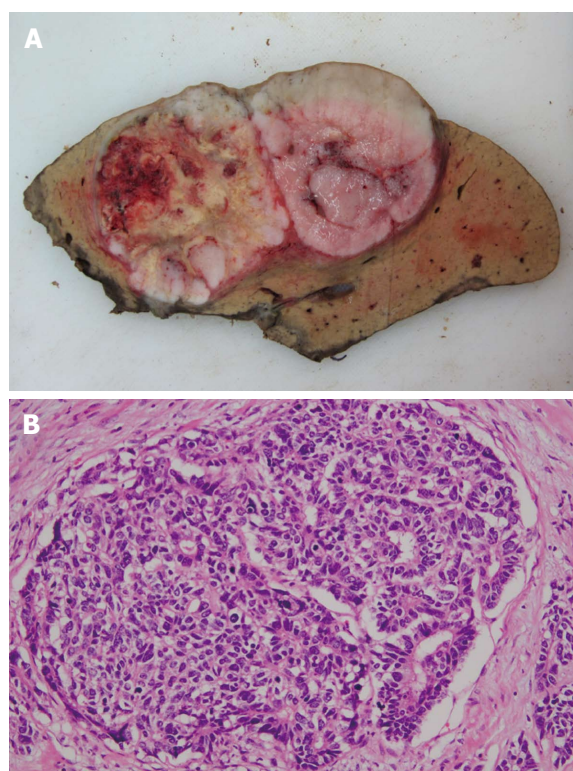


Figure 3 Histologically, the tumor was mainly composed of small, monotonous glands formed into antler-like anastomosing patterns, embedded in the fibrous stroma to various degrees of fibrous stroma and lacking mucin production. A: Macroscopically, an expanding tumor located in the right anterior compartment of the liver with extrahepatic hematoma with central necrosis; B: HE staining demonstrated the tumors mainly composed of small, monotonous glands and embedded in various degrees of fibrous stroma without mucin production.

tinguished from those other cancers.

Moreover, CoCC can appear as a ruptured huge tumor, and when it does, radical hepatectomy can be an effective measure to achieve both absolute hemostasis and tumor cure.

COMMENTS

Case characteristics

An 80-year-old Japanese woman presented with right upper abdominal pain that had developed within 2-3 h along with hypotension.

Clinical diagnosis

There was tenderness in the right upper abdomen, and her body temperature was 36.5 °C.

Differential diagnosis

Hepatocellular carcinoma, intrahepatic cholangiocarcinoma, metastatic hepatic tumor or hepatic abscess.

Laboratory diagnosis

Laboratory test results were within the normal range. In particular, the patient was negative for anemia and thrombocytopenia, and her bilirubin, transaminase and albumin levels were in the normal range.

Imaging diagnosis

A contrast-enhanced computed tomography scan showed a huge tumor located in the right anterior segment of the liver along with extrahepatic hematoma.

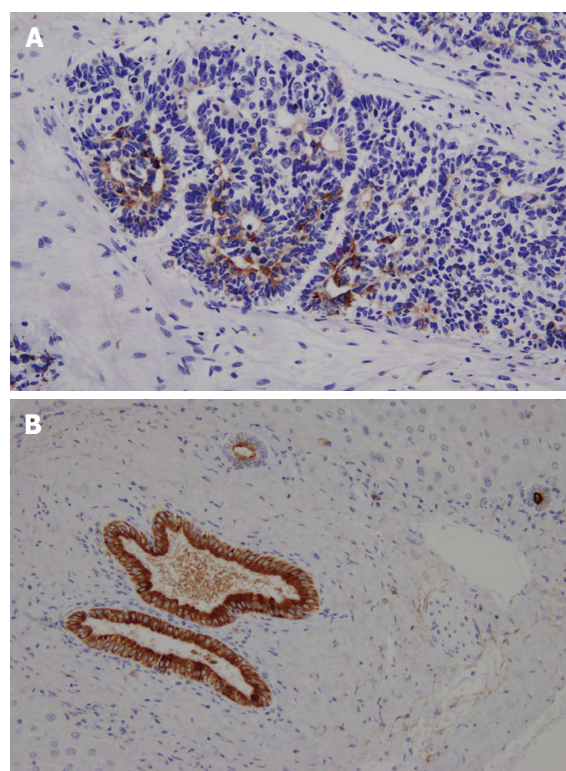


Figure 4 Cholangiolocellular carcinoma cells were confirmed by positive staining for cytokeratin 19 (A) and membranous positive staining for epithelial membrane antigen (B).

Pathological diagnosis

The tumor was mainly composed of small, monotonous glands formed into antler-like anastomosing patterns, embedded in the fibrous stroma to various degrees and lacking mucin production.

Treatment

Fluid resuscitation, blood transfusion and primary right hemi-hepatectomy.

Related reports

Spontaneous tumor rupture is one of the most fatal complications of hepatic tumors, and it is reported that the in-hospital and 30-d mortality rates are as high as 25%-100%.

Term explanation

Cholangiolocellular carcinoma (CoCC) was previously classified as a special type of intrahepatic cholangiocarcinoma. However, as a result of recent advancements in the field, CoCC is now considered to originate from hepatic stem/progenitor cells.

Experiences and lessons

CoCC can appear as a ruptured huge tumor, and when it does, radical hepatectomy can be an effective measure to achieve both absolute hemostasis and tumor cure.

Peer-review

Nice case report of successful surgical treatment of rare primary hepatic tumor. Excellent illustrations.

REFERENCES

- Liu CL, Fan ST, Lo CM, Tso WK, Poon RT, Lam CM, Wong J. Management of spontaneous rupture of hepatocellular carcinoma: single-center experience. *J Clin Oncol* 2001; **19**: 3725-3732 [PMID: 11533094 DOI: 10.1200/jco.2001.19.17.3725]

- 2 **Steiner PE**, Higginson J. Cholangiolocellular carcinoma of the liver. *Cancer* 1959; **12**: 753-759 [PMID: 13663020 DOI: 10.1002/1097-0142 (195907/08)12:4<753::AID-CNCR2820120420>3.0.CO;2-L]
- 3 **Kanamoto M**, Yoshizumi T, Ikegami T, Imura S, Morine Y, Ikemoto T, Sano N, Shimada M. Cholangiolocellular carcinoma containing hepatocellular carcinoma and cholangiocellular carcinoma, extremely rare tumor of the liver: a case report. *J Med Invest* 2008; **55**: 161-165 [PMID: 18319561]
- 4 **Fukukura Y**, Hamanoue M, Fujiyoshi F, Sasaki M, Haruta K, Inoue H, Aiko T, Nakajo M. Cholangiolocellular carcinoma of the liver: CT and MR findings. *J Comput Assist Tomogr* 2000; **24**: 809-812 [PMID: 11045707]
- 5 **Uenishi T**, Yamazaki O, Tanaka H, Takemura S, Yamamoto T, Tanaka S, Nishiguchi S, Kubo S. Serum cytokeratin 19 fragment (CYFRA21-1) as a prognostic factor in intrahepatic cholangiocarcinoma. *Ann Surg Oncol* 2008; **15**: 583-589 [PMID: 17955299 DOI: 10.1245/s10434-007-9650-y]
- 6 **Guglielmi A**, Ruzzenente A, Campagnaro T, Pachera S, Valdegamberi A, Nicoli P, Cappellani A, Malfermoni G, Iacono C. Intrahepatic cholangiocarcinoma: prognostic factors after surgical resection. *World J Surg* 2009; **33**: 1247-1254 [PMID: 19294467 DOI: 10.1007/s00268-009-9970-0]
- 7 **Ariizumi S**, Kotera Y, Katagiri S, Nakano M, Nakanuma Y, Saito A, Yamamoto M. Long-term survival of patients with cholangiolocellular carcinoma after curative hepatectomy. *Ann Surg Oncol* 2014; **21** Suppl 3: S451-S458 [PMID: 24633664 DOI: 10.1245/s10434-014-3582-0]
- 8 **Yoshida H**, Mamada Y, Taniat N, Uchida E. Spontaneous ruptured hepatocellular carcinoma. *Hepatol Res* 2016; **46**: 13-21 [PMID: 25631290 DOI: 10.1111/hepr.12498]
- 9 **Maeno S**, Kondo F, Sano K, Takada T, Asano T. Morphometric and immunohistochemical study of cholangiolocellular carcinoma: comparison with non-neoplastic cholangiole, interlobular duct and septal duct. *J Hepatobiliary Pancreat Sci* 2012; **19**: 289-296 [PMID: 22179577 DOI: 10.1007/s00534-011-0483-5]
- 10 **Barosa R**, Figueiredo P, Fonseca C. Acute Anemia in a Patient With Hepatocellular Carcinoma. HCC Rupture With Intraperitoneal Hemorrhage. *Gastroenterology* 2015; **149**: e3-e4 [PMID: 26231603 DOI: 10.1053/j.gastro.2014.12.055]
- 11 **Recordare A**, Bonariol L, Caratozzolo E, Callegari F, Bruno G, Di Paola F, Bassi N. Management of spontaneous bleeding due to hepatocellular carcinoma. *Minerva Chir* 2002; **57**: 347-356 [PMID: 12029230]
- 12 **Han XJ**, Su HY, Shao HB, Xu K. Prognostic factors of spontaneously ruptured hepatocellular carcinoma. *World J Gastroenterol* 2015; **21**: 7488-7494 [PMID: 26139994 DOI: 10.3748/wjg.v21.i24.7488]

P- Reviewer: Galvao FHF, Kang KJ, Kamiyama T, Qin JM, Surani S, Tarazov PG **S- Editor:** Song XX **L- Editor:** A **E- Editor:** Li D





Published by **Baishideng Publishing Group Inc**
7901 Stoneridge Drive, Suite 501, Pleasanton, CA 94588, USA
Telephone: +1-925-223-8242
Fax: +1-925-223-8243
E-mail: bpgoffice@wjgnet.com
Help Desk: <http://www.f6publishing.com/helpdesk>
<http://www.wjgnet.com>

