

# World Journal of *Gastrointestinal Pathophysiology*

Bimonthly Volume 15 Number 1 April 22, 2024



## MINIREVIEWS

Mubarak M. Changes in the terminology and diagnostic criteria of non-alcoholic fatty liver disease: Implications and opportunities. *World J Gastrointest Pathophysiol* 2024; 15(1): 92864 [DOI: [10.4291/wjgp.v15.i1.92864](https://doi.org/10.4291/wjgp.v15.i1.92864)]

## ORIGINAL ARTICLE

## Retrospective Study

Yavuz A, Simsek K, Alpsoy A, Altunay B, Gedik EO, Unal B, Bassorgun CI, Tatli AM, Elpek GO. Prognostic significance of tumor budding, desmoplastic reaction, and lymphocytic infiltration in patients with gastric adenocarcinoma. *World J Gastrointest Pathophysiol* 2024; 15(1): 91237 [DOI: [10.4291/wjgp.v15.i1.91237](https://doi.org/10.4291/wjgp.v15.i1.91237)]

Dahiya DS, Wachala J, Solanki S, Solanki D, Kichloo A, Holcomb S, Mansuri U, Haq KS, Ali H, Gangwani MK, Shah YR, Varghese T, Khan HMA, Horslen SP, Schiano TD, Jafri SM. Sepsis during short bowel syndrome hospitalizations: Identifying trends, disparities, and clinical outcomes in the United States. *World J Gastrointest Pathophysiol* 2024; 15(1): 92085 [DOI: [10.4291/wjgp.v15.i1.92085](https://doi.org/10.4291/wjgp.v15.i1.92085)]

## Observational Study

Qadeer MA, Abbas Z, Amjad S, Shahid B, Altaf A, Siyal M. Des-gamma-carboxy prothrombin and alpha-fetoprotein levels as biomarkers for hepatocellular carcinoma and their correlation with radiological characteristics. *World J Gastrointest Pathophysiol* 2024; 15(1): 90893 [DOI: [10.4291/wjgp.v15.i1.90893](https://doi.org/10.4291/wjgp.v15.i1.90893)]

## SYSTEMATIC REVIEWS

Giri S, Anirvan P, Angadi S, Singh A, Lavekar A. Prevalence and outcome of sarcopenia in non-alcoholic fatty liver disease. *World J Gastrointest Pathophysiol* 2024; 15(1): 91100 [DOI: [10.4291/wjgp.v15.i1.91100](https://doi.org/10.4291/wjgp.v15.i1.91100)]

## Contents

*World Journal of Gastrointestinal Pathophysiology*  
Bimonthly Volume 15 Number 1 April 22, 2024

### ABOUT COVER

Editorial Board Member of *World Journal of Gastrointestinal Pathophysiology*, José E Manautou, PhD, Chairman, Professor, Department of Pharmaceutical Sciences, University of Connecticut, Storrs, CT 06269, United States. jose.manautou@uconn.edu

### AIMS AND SCOPE

The primary aim of the *World Journal of Gastrointestinal Pathophysiology* (WJGP, *World J Gastrointest Pathophysiol*) is to provide scholars and readers from various fields of gastrointestinal pathophysiology with a platform to publish high-quality basic and clinical research articles and communicate their research findings online.

WJGP mainly publishes articles reporting research results and findings obtained in the field of gastrointestinal pathophysiology and covering a wide range of topics including disorders of the esophagus, stomach and duodenum, small intestines, pancreas, biliary system, and liver.

### INDEXING/ABSTRACTING

The WJGP is now abstracted and indexed in PubMed, PubMed Central, Reference Citation Analysis, China Science and Technology Journal Database, and Superstar Journals Database.

### RESPONSIBLE EDITORS FOR THIS ISSUE

Production Editor: *Yu-Qing Zhao*; Production Department Director: *Xu Guo*; Cover Editor: *Jia-Ping Yan*.

#### NAME OF JOURNAL

*World Journal of Gastrointestinal Pathophysiology*

#### ISSN

ISSN 2150-5330 (online)

#### LAUNCH DATE

April 15, 2010

#### FREQUENCY

Bimonthly

#### EDITORS-IN-CHIEF

Kusum K Kharbanda, Tsutomu Nishida, Somchai Amorniyotin

#### EDITORIAL BOARD MEMBERS

<https://www.wjgnet.com/2150-5330/editorialboard.htm>

#### PUBLICATION DATE

April 22, 2024

#### COPYRIGHT

© 2024 Baishideng Publishing Group Inc

#### INSTRUCTIONS TO AUTHORS

<https://www.wjgnet.com/bpg/gerinfo/204>

#### GUIDELINES FOR ETHICS DOCUMENTS

<https://www.wjgnet.com/bpg/GerInfo/287>

#### GUIDELINES FOR NON-NATIVE SPEAKERS OF ENGLISH

<https://www.wjgnet.com/bpg/gerinfo/240>

#### PUBLICATION ETHICS

<https://www.wjgnet.com/bpg/GerInfo/288>

#### PUBLICATION MISCONDUCT

<https://www.wjgnet.com/bpg/gerinfo/208>

#### ARTICLE PROCESSING CHARGE

<https://www.wjgnet.com/bpg/gerinfo/242>

#### STEPS FOR SUBMITTING MANUSCRIPTS

<https://www.wjgnet.com/bpg/GerInfo/239>

#### ONLINE SUBMISSION

<https://www.f6publishing.com>

© 2024 Baishideng Publishing Group Inc. All rights reserved. 7041 Koll Center Parkway, Suite 160, Pleasanton, CA 94566, USA

E-mail: [office@baishideng.com](mailto:office@baishideng.com) <https://www.wjgnet.com>



## Changes in the terminology and diagnostic criteria of non-alcoholic fatty liver disease: Implications and opportunities

Muhammed Mubarak

**Specialty type:** Gastroenterology and hepatology

**Provenance and peer review:** Invited article; Externally peer reviewed.

**Peer-review model:** Single blind

**Peer-review report's classification**

**Scientific Quality:** Grade C

**Novelty:** Grade C

**Creativity or Innovation:** Grade C

**Scientific Significance:** Grade B

**P-Reviewer:** Dai DL, China

**Received:** February 8, 2024

**Revised:** April 4, 2024

**Accepted:** April 10, 2024

**Published online:** April 22, 2024



**Muhammed Mubarak**, Javed I. Kazi Department of Histopathology, Sindh Institute of Urology and Transplantation, Karachi 74200, Pakistan

**Corresponding author:** Muhammed Mubarak, MD, Full Professor, Javed I. Kazi Department of Histopathology, Sindh Institute of Urology and Transplantation, Chand Bibi Road, Karachi 74200, Pakistan. [drmubaraksiut@yahoo.com](mailto:drmubaraksiut@yahoo.com)

### Abstract

Fatty liver disease (FLD) is a highly prevalent pathological liver disorder. It has many and varied etiologies and has heterogeneous clinical course and outcome. Its proper nomenclature and classification have been problematic since its initial recognition. Traditionally, it was divided into two main categories: Alcohol-associated liver disease and nonalcoholic FLD (NAFLD). Among these, the latter condition has been plagued with nomenclature and classification issues. The two main objections to its use have been the use of negative (non-alcoholic) and stigmatizing (fatty) terms in its nomenclature. Numerous attempts were made to address these issues but none achieved universal acceptance. Just recently, NAFLD has received a new nomenclature from an international collaborative effort based on a rigorous scientific methodology. FLD has been renamed steatotic liver disease (SLD), and NAFLD as metabolic dysfunction-associated SLD. Metabolic dysfunction-associated steatohepatitis was chosen as the replacement terminology for non-alcoholic steatohepatitis. This is a significant positive change in the nomenclature and categorization of FLD and will likely have a major impact on research, diagnosis, treatment, and prognosis of the disease in the future.

**Key Words:** Fatty liver disease; Metabolic syndrome; Non-alcoholic fatty liver disease; Steatotic liver disease; Steatohepatitis

©The Author(s) 2024. Published by Baishideng Publishing Group Inc. All rights reserved.

**Core Tip:** Non-alcoholic fatty liver disease (NAFLD) is a very common illness in adult patients throughout the world and its prevalence has reached epidemic proportions in many parts of the world. Its nomenclature and classification have been controversial since its initial recognition compounded by rapid developments in understanding of its epidemiology and pathogenesis. In June 2023, its nomenclature was changed to steatotic liver disease (SLD) and NAFLD has been renamed metabolic dysfunction-associated SLD. This change in nomenclature and classification has not only implications for clinical practice but also provides opportunities to better understand the disease and its treatment.

**Citation:** Mubarak M. Changes in the terminology and diagnostic criteria of non-alcoholic fatty liver disease: Implications and opportunities. *World J Gastrointest Pathophysiol* 2024; 15(1): 92864

**URL:** <https://www.wjgnet.com/2150-5330/full/v15/i1/92864.htm>

**DOI:** <https://dx.doi.org/10.4291/wjgp.v15.i1.92864>

## INTRODUCTION

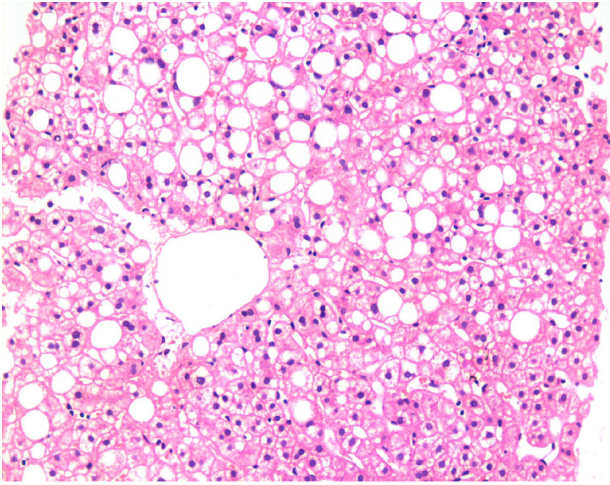
Fatty liver disease (FLD) is not new, but its formal recognition and categorization is a relatively recent development (Figure 1). The association of hepatic steatosis with alcohol abuse is a well-known pathological entity with a well-recognized and non-controversial terminology of alcoholic liver disease (ALD). However, nonalcoholic FLD (NAFLD), a historical overarching term used for the spectrum of FLDs not linked to significant alcohol abuse or other known etiologic agents, was formally recognized only in the 1980s[1,2]. Since then, it has been plagued with nomenclature and diagnostic controversies. Its predecessor term, non-alcoholic steatohepatitis (NASH), was first named by Ludwig *et al*[3] in 1980. In the seminal report of 20 patients whose liver biopsy specimens exhibited striking fatty and necro-inflammatory changes, Mallory bodies, fibrosis, and cirrhosis, Ludwig *et al*[3] used the name “NASH” to distinguish it from the well-characterized pathological condition of ALD. The study subjects exhibited a high prevalence of obesity, female gender, type 2 diabetes (T2D), gallstones, and thyroid disease[3]. The broader term NAFLD was first used in a review article by Schaffner and Thaler[4] in 1986. Since these earlier descriptions of FLD, considerable progress has been made in understanding the disease's epidemiology, etiology, pathogenesis, pathology, treatment, and prognosis[5-10]. During the ensuing years, the prevalence of the disease has risen steeply throughout the world and it has attained epidemic proportions globally affecting more than 30% of the world's adult population. It has also attained the status of the dominant source of chronic liver disease and the dominant indication of liver transplantation globally[11-16]. The rise in prevalence has, in particular, paralleled the rise in the incidence of obesity, T2D, and metabolic syndrome (MS)[17-21]. Several studies also reported an association of the disease with cardiovascular disease, thus further complicating the disease's etiology and pathogenesis[22-25]. Although there is also no specific treatment for the disease to date, considerable progress has been made in understanding the pathogenesis and molecular mechanisms of the disease. These advancements have made it possible to develop targeted therapies, paving the way for personalized medicine[26-30]. This huge expansion of knowledge and advancements in understanding the disease were not reflected until very recently either in the nomenclature of the disease or its diagnostic criteria. All the above developments necessitated a revisiting of the terminology and classification of the disease[31,32]. This mini-review aims to summarize the history of nomenclature changes of this disease. This change is not merely a semantic process but has considerable implications not only for hepatologists but for several other stakeholders.

### History of nomenclature changes

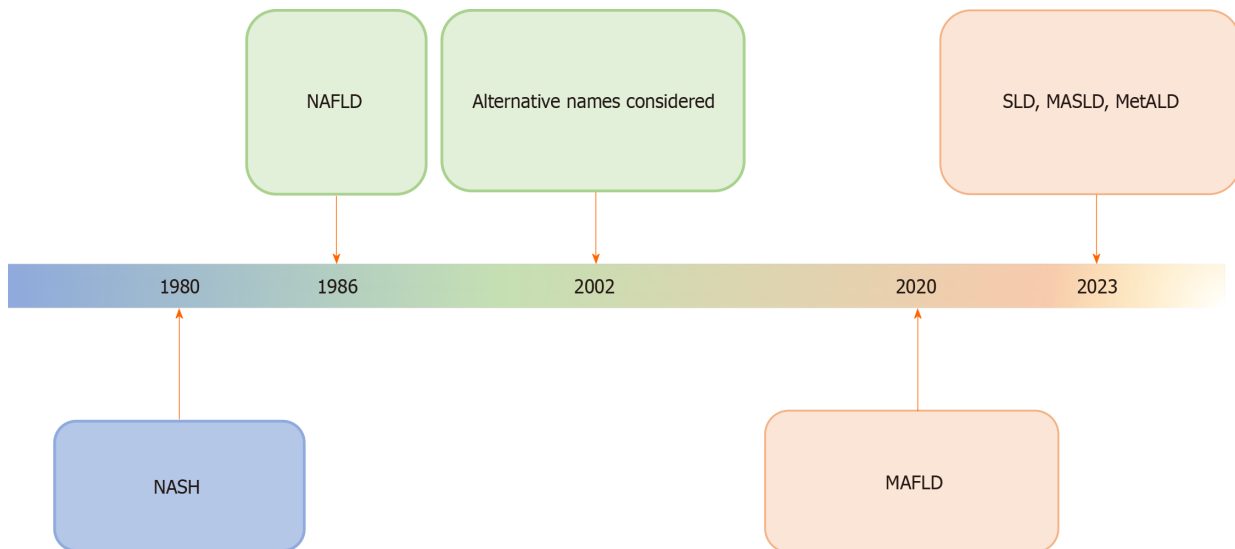
The term NASH was coined almost four decades ago by Ludwig and his colleagues in a seminal paper published in Mayo Proceedings journal[3]. Soon, it became the subject of intense research on multiple aspects of the disease to define its epidemiology, pathogenetic mechanisms, diagnosis, and treatment. Its overarching term, NAFLD, was first used by Schaffner and Thaler[4] in 1986 in a review article on FLDs (Figure 2). With the expansion of knowledge about different aspects of the disease and its widespread prevalence, it was soon realized that the original name does not reflect the continuously expanding knowledge and understanding of the disease's etiology and pathogenesis. Many acquired and genetic risk factors were identified and the heterogeneity and complexity of disease pathogenesis became obvious[33-35]. In a Single Topic Conference on NAFLD held in 2002 and sponsored by the American Association for the Study of Liver Diseases (AASLD), it was hotly debated to change the name of the disease to better reflect the etiopathogenesis of the disease and many alternative names were considered but no one name was approved[31].

The two main objections to the use of the term NAFLD were that it was based on negative or exclusionary diagnostic criteria and there were some stigmatizing terms in the name, *i.e.*, alcohol and fatty[36-40]. There was no link to the underlying etiology or risk factors of the disease in the name. In addition, the previous terminology excluded individuals harboring risk factors for NAFLD, for instance, T2D, who consumed greater quantities of alcohol than the non-alcoholic thresholds envisaged in the criteria.

In 2020, metabolic dysfunction-associated FLD (MAFLD) was proposed as a replacement for the acronym NAFLD by a small number of international liver experts, to emphasize the importance of systemic metabolic dysfunction in the etiopathogenesis of this disease[41,42]. They suggested MAFLD as the single overarching term for the entire spectrum of NAFLD. They also proposed positive diagnostic criteria for an affirmative diagnosis of MAFLD (Figure 2). The change of the terminology of “NAFLD” to “MAFLD” was done to highlight the dominant role of metabolic factors in the disease



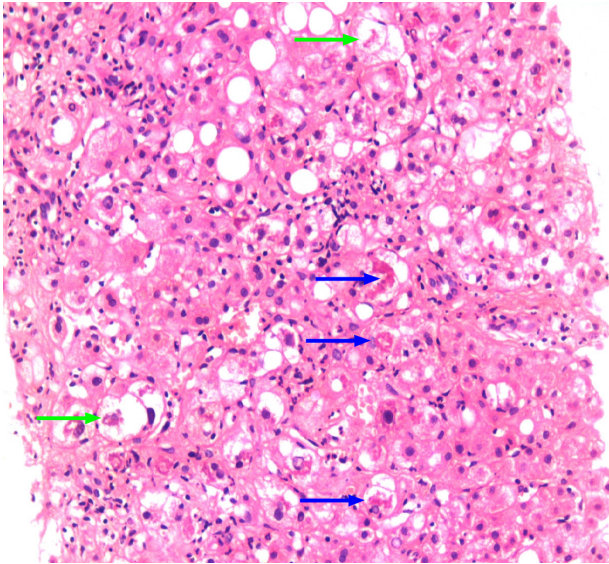
**Figure 1 Liver biopsy showing fatty changes.** There is a predominant macro-vesicular fatty change in the centrilobular area. There is no significant hepatocellular damage, inflammation, or fibrosis. This represents one end of the spectrum of fatty diseases of the liver (HE, × 200).



**Figure 2 Schematic diagram showing the history of evolution of nomenclature changes of fatty liver diseases, particularly, non-alcoholic fatty liver disease.** The most recent name suggested is the overarching term of steatotic liver disease. The rationalization of classification approaches is highlighted by changes in color. NASH: Non-alcoholic steatohepatitis; MAFLD: Metabolic dysfunction-associated fatty liver disease; MASLD: Metabolic dysfunction-associated SLD; MetALD: MASLD, and moderate alcohol intake; NAFLD: Non-alcoholic fatty liver disease; SLD: Steatotic liver disease.

etiology and pathogenesis, thus improving patient understanding of the disease, facilitating patient-physician communication, and emphasizing the importance of public health interventions in its prevention and management[43-45]. However, the new term still included stigmatizing terms and did not cover the whole spectrum of steatotic liver disease (SLD). Some specific examples of discrepancies include, for example, not all cases of NAFLD are seen in obese or fatty individuals. These can be seen in lean individuals. Fat may not be demonstrated in the liver tissue in advanced stages of SLD resulting in cirrhosis. The new name was accepted by many societies dedicated to the study of liver diseases. Nevertheless, a broader international agreement was not accorded and some of the key pan-national and national societies did not fully endorse the terminology as many other stakeholders. Many liver experts described it as a premature attempt[46,47]. Concerns were also raised on the robustness and transparency of the methodology used for changing the name. They also removed the term steatohepatitis, a key lesion in progressive forms of FLD, from the nomenclature (Figure 3). The heterogeneity of NAFLD etiology and pathophysiology was ignored in MAFLD. In initial clinical trials, investigators concentrated on curtailing metabolic risk factors or insulin resistance, as NAFLD was predominantly thought of as a hepatic expression of the MS. However, most of these clinical trials with anti-obesity treatments, lipid-lowering agents, and insulin sensitizers, did not succeed in NAFLD treatment. The development of NAFLD is mediated by a variety of mechanisms and is much more complicated than formerly stipulated. Thus, a dominant focus on metabolic dysfunction could mask new treatment targets and delay the development of targeted therapeutics. Some important risk factors such as dysbiosis of the intestinal microbiota, genetic factors, and sarcopenia, were not given due consideration in the MAFLD transition. However, these factors are important contributory factors in the development of





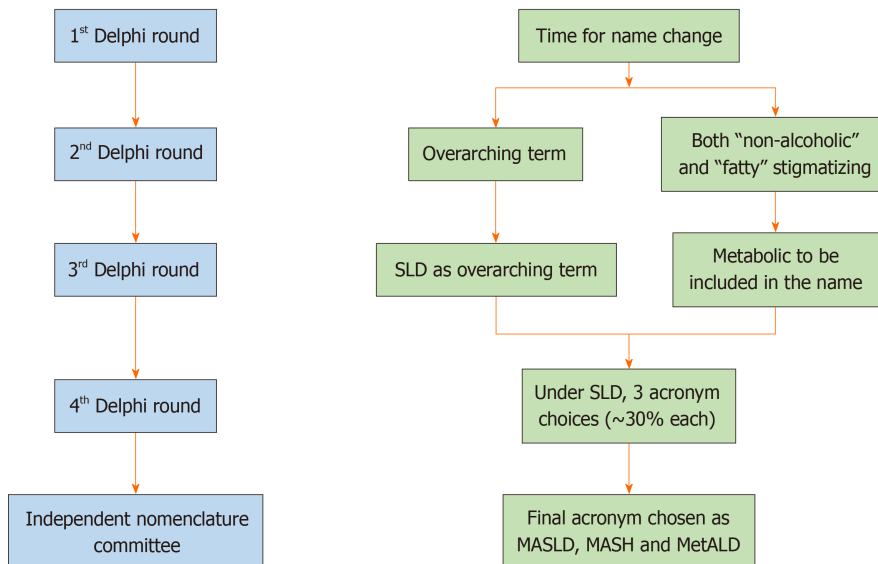
**Figure 3 Liver biopsy showing morphological changes of non-alcoholic steatohepatitis, now named metabolic dysfunction-associated steatohepatitis.** There is the macro-vesicular fatty change associated with ballooned hepatocytes (green arrow), inflammation, and fibrosis. A few Mallory bodies are seen in the ballooned hepatocytes (blue arrow). This represents the progressive form of fatty disease of the liver that may progress to cirrhosis if left untreated (HE,  $\times 200$ ).

NAFLD and may serve as targets for drug discovery. The new characterization of MAFLD also increased the spectrum of the study population in phase III clinical trials, since it also encompassed subjects with ALD or viral hepatitis. Moreover, the definition of the resolution of MAFLD as the key endpoint in clinical trials could result in controversial results. Presently, the resolution of NASH without augmentation of hepatic fibrosis is utilized as a tangible endpoint in clinical trials for NAFLD[43,44].

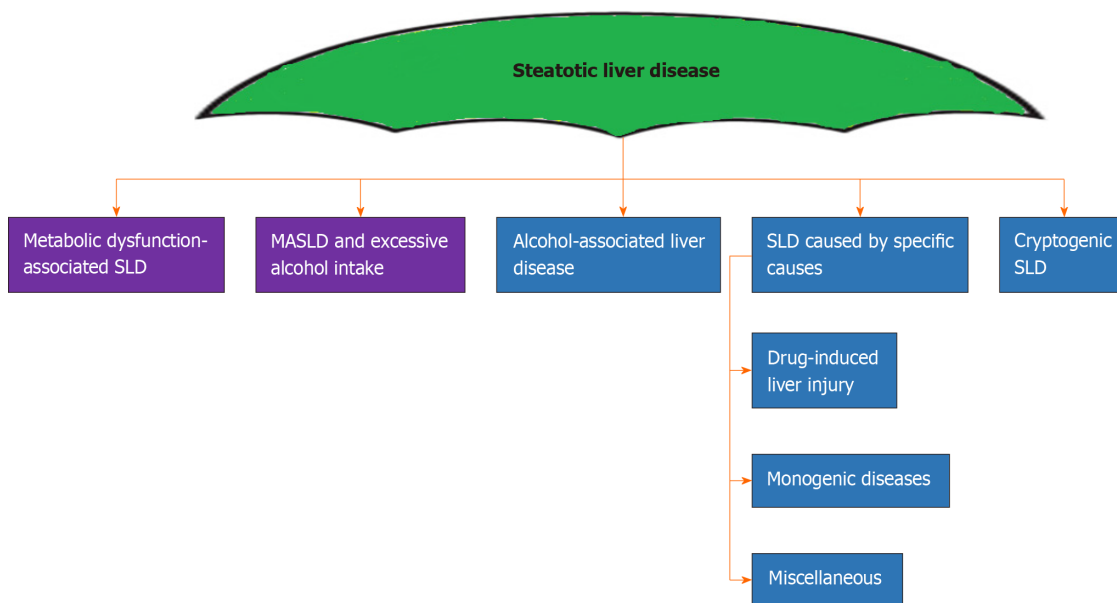
### The new nomenclature

Acknowledging the above deficiencies, a wide-ranging and all-inclusive effort was started by the AASLD, the Asociación Latinoamericana para el Estudio del Hígado, and the European Association for the Study of the Liver to systematically and scientifically address this issue. This multi-stakeholder initiative not only involved hepatologists, but also included hepatopathologists, gastroenterologists, endocrinologists, and obesity and public health experts, along with representatives from regulatory agencies, industry, and patient advocacy groups. Their combined expertise and varied viewpoints helped achieve a new agreement on changing the diagnostic criteria and terminology for NAFLD[48].

The new nomenclature was developed from 2020 to early 2023 and was finalized in June 2023. The global consultation process used the structured, transparent, multistage survey-based Delphi technique along with hybrid meetings (Figure 4). During the process, a total of 236 panelists from 56 countries, and members of the NAFLD Nomenclature Consensus Group, contributed to four online surveys and two in-person meetings with a final response rate of  $> 75\%$  for four rounds of data collection. In a preliminary survey, the terms 'non-alcoholic' and 'fatty' were considered to be stigmatizing by 61% and 66% of those who responded, respectively[48]. As the term 'non-alcoholic' was already replaced, the term 'fatty' was replaced by steatosis, a scientific and non-stigmatizing term. Thus, SLD was selected as an umbrella term to include all possible causes of steatosis including ALD (Figure 5). Five diagnostic sub-categories were created to encompass the entire spectrum of FLDs including ALD and combined forms of the disease. The term steatohepatitis was retained as it was considered to represent a crucial step in the progressive form of liver damage caused by fat accumulation and an integral part of the natural course of the disease. The term metabolic dysfunction-associated SLD (MASLD) was chosen in place of NAFLD. A consensus was also reached on changing the defining criteria. The presence of at least one among the five cardiometabolic risk factors was considered essential for the diagnosis. These are different for adult and pediatric patients. Metabolic dysfunction-associated steatohepatitis (MASH) was selected to represent the former term NASH. Cases in which no metabolic parameters and no known causes were obvious were categorized as cryptogenic SLD (Figure 5). Because of the frequent concurrence of the two pathologies, a new category, designated MetALD was chosen to represent those patients with MASLD who consume beyond threshold amounts of alcohol per week. The Delphi panel devised an algorithmic approach for categorizing the disease in individual patients (Figure 6), which is very helpful in clinical practice. It should be noted that the name change does not alter the natural history, biomarkers, or trials. The staging and grading of the disease will also not be affected by this change of terminology. The Delphi panel defined and separated a sub-category, MetALD, that has not been studied till now, which will benefit from being included in clinical trials and integrated into care pathways. According to proponents of the new nomenclature, there is a need for more work to be done to enhance disease familiarity, eliminate stigma, and speed up biomarker and targeted drug development to improve outcomes of patients with MASLD and MetALD[48].



**Figure 4 Overview of the main methodology used to change the name of fatty liver disease.** The conclusions reached at each round of the Delphi method are shown on the right. Changes were also made in the diagnostic criteria (not shown here). An independent subcommittee comprising expert hepatologists, endocrinologists, pediatricians, and patients chose between the top three acronyms emerging from the fourth Delphi round. SLD: Steatotic liver disease; MASLD: Metabolic dysfunction-associated SLD; MASH: Metabolic dysfunction-associated steatohepatitis; MetALD: MASLD, and moderate alcohol intake.

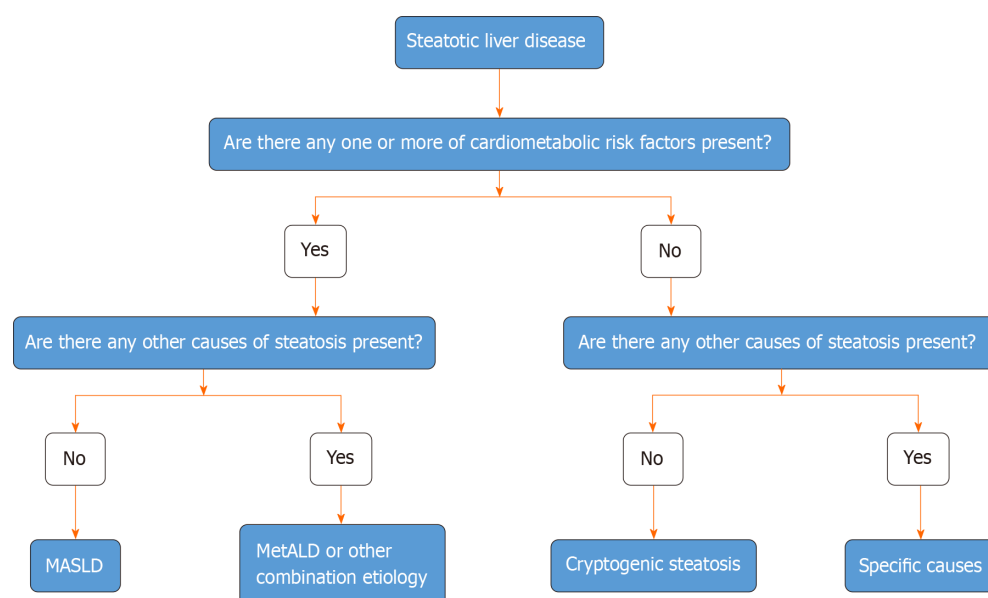


**Figure 5 Steatotic Liver Disease and its sub-categorization.** This figure shows the schema for steatotic liver disease (SLD) and its sub-categorization. SLD, diagnosed by imaging studies or histology, has many potential causes. Metabolic dysfunction-associated SLD, defined as hepatic steatosis together with one cardiometabolic risk factor and no other apparent cause, ALD, and an overlap of the two (MetALD), comprise the most common causes of SLD. Other specific causes of SLD need to be considered separately, as they exhibit distinct pathogenesis. Multiple etiologies of steatosis can coexist in one case. Those with no identifiable cause are currently placed under the cryptogenic SLD category. However, these may be reclassified in the future in response to an increase in our understanding of disease pathophysiology. SLD: Steatotic liver disease.

### Implications and opportunities

The change of name from NAFLD to MASLD has many benefits and implications. It is an affirmative diagnosis with positive diagnostic criteria. It avoids the use of stigmatizing terms. It has been endorsed internationally and is widely accepted. It raises awareness of the disease process and its risk factors in primary care physicians and patients and elucidates treatment options more clearly, and encourages a comprehensive approach to managing patients with the disease. MASLD permits better management of patients with concurrent liver diseases other than MASLD. During the NAFLD era, chronic hepatitis C-infected patients, for example, were labeled as such regardless of the occurrence of liver steatosis. As a result, the significance of lifestyle changes in these patients was underestimated. Nevertheless, there is increasing evidence that concurrent liver steatosis aggravates the outcome in individuals with chronic viral hepatitis. Thus, the new initiative recognizes multiple causes of SLD and allows multidisciplinary management for such patients.





**Figure 6 Algorithmic approach to the categorization of steatotic liver disease.** In the presence of hepatic steatosis either on imaging or liver biopsy, the presence of any of a cardiometabolic risk factor (CMRF) will lead to a diagnosis of metabolic dysfunction-associated steatotic liver disease (SLD) in the absence of other causes of hepatic steatosis. If additional causes of steatosis are identified, then this will qualify for a combination etiology. In the case of alcohol, this is labeled MetALD. In the absence of overt CMRF, other causes must be excluded and if none is identified, this is labeled cryptogenic SLD. MASLD: Metabolic dysfunction-associated SLD; MetALD: MASLD, and moderate alcohol intake.

The term MASLD underscores metabolic dysfunction as the fundamental mechanism of hepatic steatosis, both through its terminology and the required diagnostic criteria. This change in nomenclature also would facilitate an instinctive elucidation of causes and management options for patients. The metamorphosis of name from NAFLD to MASLD is more than a semantic process and will have implications for research, government policies, the pharmaceutical industry, and insurance companies. The change in name to “MASLD” will require substantial changes in the designs of ongoing clinical trials of NAFLD, their main endpoints, clinical outcomes of final approval, and treatment targets due to the new inclusion criteria[48,49]. The transition to a new nomenclature for the FLD will require a step-by-step methodology to ensure its successful implementation and universal acceptance across the globe. The true implications of the changes in nomenclature and diagnostic criteria will become more obvious as the nomenclature and diagnostic modifications take effect in real life.

## CONCLUSION

In conclusion, the new terminologies and diagnostic criteria have garnered widespread support, are non-stigmatizing, and provide a new and all-inclusive platform from which the medical community can increase disease cognizance, eradicate stigma, and speed up biomarker and drug development for better outcomes for patients with MASLD, MASH, and MetALD.

## FOOTNOTES

**Author contributions:** Mubarak M is the sole author of the manuscript, and he conceived and designed the study, performed the research, participated in primary and final drafting, and has read and approved the final manuscript.

**Conflict-of-interest statement:** There is no conflict of interest associated with any of the senior author or other coauthors contributed their efforts in this manuscript.

**Open-Access:** This article is an open-access article that was selected by an in-house editor and fully peer-reviewed by external reviewers. It is distributed in accordance with the Creative Commons Attribution NonCommercial (CC BY-NC 4.0) license, which permits others to distribute, remix, adapt, build upon this work non-commercially, and license their derivative works on different terms, provided the original work is properly cited and the use is non-commercial. See: <https://creativecommons.org/Licenses/by-nc/4.0/>

**Country/Territory of origin:** Pakistan

**ORCID number:** Muhammed Mubarak 0000-0001-6120-5884.

S-Editor: Qu XL

L-Editor: A

P-Editor: Zhao YQ

## REFERENCES

- 1 Targher G. What's Past Is Prologue: History of Nonalcoholic Fatty Liver Disease. *Metabolites* 2020; **10** [PMID: 33049948 DOI: 10.3390/metabo10100397]
- 2 Ng CH, Huang DQ, Nguyen MH. Nonalcoholic fatty liver disease versus metabolic-associated fatty liver disease: Prevalence, outcomes and implications of a change in name. *Clin Mol Hepatol* 2022; **28**: 790-801 [PMID: 35545437 DOI: 10.3350/cmh.2022.0070]
- 3 Ludwig J, Viggiano TR, McGill DB, Oh BJ. Nonalcoholic steatohepatitis: Mayo Clinic experiences with a hitherto unnamed disease. *Mayo Clin Proc* 1980; **55**: 434-438 [PMID: 7382552]
- 4 Schaffner F, Thaler H. Nonalcoholic fatty liver disease. *Prog Liver Dis* 1986; **8**: 283-298 [PMID: 3086934]
- 5 Diehl AM, Day C. Cause, Pathogenesis, and Treatment of Nonalcoholic Steatohepatitis. *N Engl J Med* 2017; **377**: 2063-2072 [PMID: 29166236 DOI: 10.1056/NEJMr1503519]
- 6 Buzzetti E, Pinzani M, Tsochatzis EA. The multiple-hit pathogenesis of non-alcoholic fatty liver disease (NAFLD). *Metabolism* 2016; **65**: 1038-1048 [PMID: 26823198 DOI: 10.1016/j.metabol.2015.12.012]
- 7 Li B, Zhang C, Zhan YT. Nonalcoholic Fatty Liver Disease Cirrhosis: A Review of Its Epidemiology, Risk Factors, Clinical Presentation, Diagnosis, Management, and Prognosis. *Can J Gastroenterol Hepatol* 2018; **2018**: 2784537 [PMID: 30065915 DOI: 10.1155/2018/2784537]
- 8 Byrne CD, Targher G. NAFLD: a multisystem disease. *J Hepatol* 2015; **62**: S47-S64 [PMID: 25920090 DOI: 10.1016/j.jhep.2014.12.012]
- 9 Pafili K, Roden M. Nonalcoholic fatty liver disease (NAFLD) from pathogenesis to treatment concepts in humans. *Mol Metab* 2021; **50**: 101122 [PMID: 33220492 DOI: 10.1016/j.molmet.2020.101122]
- 10 Nassir F. NAFLD: Mechanisms, Treatments, and Biomarkers. *Biomolecules* 2022; **12** [PMID: 35740949 DOI: 10.3390/biom12060824]
- 11 Riazi K, Azhari H, Charette JH, Underwood FE, King JA, Afshar EE, Swain MG, Congly SE, Kaplan GG, Shaheen AA. The prevalence and incidence of NAFLD worldwide: a systematic review and meta-analysis. *Lancet Gastroenterol Hepatol* 2022; **7**: 851-861 [PMID: 35798021 DOI: 10.1016/S2468-1253(22)00165-0]
- 12 Teng ML, Ng CH, Huang DQ, Chan KE, Tan DJ, Lim WH, Yang JD, Tan E, Muthiah MD. Global incidence and prevalence of nonalcoholic fatty liver disease. *Clin Mol Hepatol* 2023; **29**: S32-S42 [PMID: 36517002 DOI: 10.3350/cmh.2022.0365]
- 13 Le MH, Yeo YH, Li X, Li J, Zou B, Wu Y, Ye Q, Huang DQ, Zhao C, Zhang J, Liu C, Chang N, Xing F, Yan S, Wan ZH, Tang NSY, Mayumi M, Liu X, Rui F, Yang H, Yang Y, Jin R, Le RHX, Xu Y, Le DM, Barnett S, Stave CD, Cheung R, Zhu Q, Nguyen MH. 2019 Global NAFLD Prevalence: A Systematic Review and Meta-analysis. *Clin Gastroenterol Hepatol* 2022; **20**: 2809-2817.e28 [PMID: 34890795 DOI: 10.1016/j.cgh.2021.12.002]
- 14 Younossi Z, Anstee QM, Marietti M, Hardy T, Henry L, Eslam M, George J, Bugianesi E. Global burden of NAFLD and NASH: trends, predictions, risk factors and prevention. *Nat Rev Gastroenterol Hepatol* 2018; **15**: 11-20 [PMID: 28930295 DOI: 10.1038/nrgastro.2017.109]
- 15 Quek J, Chan KE, Wong ZY, Tan C, Tan B, Lim WH, Tan DJH, Tang ASP, Tay P, Xiao J, Yong JN, Zeng RW, Chew NWS, Nah B, Kulkarni A, Siddiqui MS, Dan YY, Wong VW, Sanyal AJ, Noureddin M, Muthiah M, Ng CH. Global prevalence of non-alcoholic fatty liver disease and non-alcoholic steatohepatitis in the overweight and obese population: a systematic review and meta-analysis. *Lancet Gastroenterol Hepatol* 2023; **8**: 20-30 [PMID: 36400097 DOI: 10.1016/S2468-1253(22)00317-X]
- 16 Younossi Z, Tacke F, Arrese M, Chander Sharma B, Mostafa I, Bugianesi E, Wai-Sun Wong V, Yilmaz Y, George J, Fan J, Vos MB. Global Perspectives on Nonalcoholic Fatty Liver Disease and Nonalcoholic Steatohepatitis. *Hepatology* 2019; **69**: 2672-2682 [PMID: 30179269 DOI: 10.1002/hep.30251]
- 17 Lee CH, Lui DT, Lam KS. Non-alcoholic fatty liver disease and type 2 diabetes: An update. *J Diabetes Investig* 2022; **13**: 930-940 [PMID: 35080136 DOI: 10.1111/jdi.13756]
- 18 Muzurović E, Mikhailidis DP, Mantzoros C. Non-alcoholic fatty liver disease, insulin resistance, metabolic syndrome and their association with vascular risk. *Metabolism* 2021; **119**: 154770 [PMID: 33864798 DOI: 10.1016/j.metabol.2021.154770]
- 19 Caussy C, Aubin A, Loomba R. The Relationship Between Type 2 Diabetes, NAFLD, and Cardiovascular Risk. *Curr Diab Rep* 2021; **21**: 15 [PMID: 33742318 DOI: 10.1007/s11892-021-01383-7]
- 20 Yki-Järvinen H. Non-alcoholic fatty liver disease as a cause and a consequence of metabolic syndrome. *Lancet Diabetes Endocrinol* 2014; **2**: 901-910 [PMID: 24731669 DOI: 10.1016/S2213-8587(14)70032-4]
- 21 Wainwright P, Byrne CD. Bidirectional Relationships and Disconnects between NAFLD and Features of the Metabolic Syndrome. *Int J Mol Sci* 2016; **17**: 367 [PMID: 26978356 DOI: 10.3390/ijms17030367]
- 22 Targher G, Byrne CD, Tilg H. NAFLD and increased risk of cardiovascular disease: clinical associations, pathophysiological mechanisms and pharmacological implications. *Gut* 2020; **69**: 1691-1705 [PMID: 32321858 DOI: 10.1136/gutjnl-2020-320622]
- 23 Kasper P, Martin A, Lang S, Kütting F, Goeser T, Demir M, Steffen HM. NAFLD and cardiovascular diseases: a clinical review. *Clin Res Cardiol* 2021; **110**: 921-937 [PMID: 32696080 DOI: 10.1007/s00392-020-01709-7]
- 24 Boccatonda A, Andreotto L, D'Ardes D, Cocco G, Rossi I, Vicari S, Schiavone C, Cipollone F, Guagnano MT. From NAFLD to MAFLD: Definition, Pathophysiological Basis and Cardiovascular Implications. *Biomedicine* 2023; **11** [PMID: 36979861 DOI: 10.3390/biomedicine11030883]
- 25 Targher G, Byrne CD, Tilg H. MASLD: a systemic metabolic disorder with cardiovascular and malignant complications. *Gut* 2024; **73**: 691-702 [PMID: 38228377 DOI: 10.1136/gutjnl-2023-330595]
- 26 Friedman SL, Neuschwander-Tetri BA, Rinella M, Sanyal AJ. Mechanisms of NAFLD development and therapeutic strategies. *Nat Med* 2018; **24**: 908-922 [PMID: 29967350 DOI: 10.1038/s41591-018-0104-9]
- 27 Cobbina E, Akhlaghi F. Non-alcoholic fatty liver disease (NAFLD) - pathogenesis, classification, and effect on drug metabolizing enzymes and transporters. *Drug Metab Rev* 2017; **49**: 197-211 [PMID: 28303724 DOI: 10.1080/03602532.2017.1293683]
- 28 Schwärzler J, Grabherr F, Grander C, Adolph TE, Tilg H. The pathophysiology of MASLD: an immunometabolic perspective. *Expert Rev*

- Clin Immunol* 2024; 20: 375-386 [PMID: 38149354 DOI: 10.1080/1744666X.2023.2294046]
- 29 **Pierantonelli I**, Svegliati-Baroni G. Nonalcoholic Fatty Liver Disease: Basic Pathogenetic Mechanisms in the Progression From NAFLD to NASH. *Transplantation* 2019; **103**: e1-e13 [PMID: 30300287 DOI: 10.1097/TP.0000000000002480]
  - 30 **Chan WK**, Chuah KH, Rajaram RB, Lim LL, Ratnasingam J, Vethakkan SR. Metabolic Dysfunction-Associated Steatotic Liver Disease (MASLD): A State-of-the-Art Review. *J Obes Metab Syndr* 2023; **32**: 197-213 [PMID: 37700494 DOI: 10.7570/jomes23052]
  - 31 **Neuschwander-Tetri BA**, Caldwell SH. Nonalcoholic steatohepatitis: summary of an AASLD Single Topic Conference. *Hepatology* 2003; **37**: 1202-1219 [PMID: 12717402 DOI: 10.1053/jhep.2003.50193]
  - 32 **Loria P**, Lonardo A, Carulli N. Should nonalcoholic fatty liver disease be renamed? *Dig Dis* 2005; **23**: 72-82 [PMID: 15920328 DOI: 10.1159/000084728]
  - 33 **Huang TD**, Behary J, Zekry A. Non-alcoholic fatty liver disease: a review of epidemiology, risk factors, diagnosis and management. *Intern Med J* 2020; **50**: 1038-1047 [PMID: 31760676 DOI: 10.1111/imj.14709]
  - 34 **Juanola O**, Martínez-López S, Francés R, Gómez-Hurtado I. Non-Alcoholic Fatty Liver Disease: Metabolic, Genetic, Epigenetic and Environmental Risk Factors. *Int J Environ Res Public Health* 2021; **18** [PMID: 34069012 DOI: 10.3390/ijerph18105227]
  - 35 **Del Campo JA**, Gallego-Durán R, Gallego P, Grande L. Genetic and Epigenetic Regulation in Nonalcoholic Fatty Liver Disease (NAFLD). *Int J Mol Sci* 2018; **19** [PMID: 29562725 DOI: 10.3390/ijms19030911]
  - 36 **Tang SY**, Tan JS, Pang XZ, Lee GH. Metabolic dysfunction associated fatty liver disease: The new nomenclature and its impact. *World J Gastroenterol* 2023; **29**: 549-560 [PMID: 36688021 DOI: 10.3748/wjg.v29.i3.549]
  - 37 **Méndez-Sánchez N**, Díaz-Orozco LE. Editorial: International Consensus Recommendations to Replace the Terminology of Non-Alcoholic Fatty Liver Disease (NAFLD) with Metabolic-Associated Fatty Liver Disease (MAFLD). *Med Sci Monit* 2021; **27**: e933860 [PMID: 34248137 DOI: 10.12659/MSM.933860]
  - 38 **Fouad Y**, Waked I, Bollipo S, Gomaa A, Ajlouni Y, Attia D. What's in a name? Renaming 'NAFLD' to 'MAFLD'. *Liver Int* 2020; **40**: 1254-1261 [PMID: 32301554 DOI: 10.1111/liv.14478]
  - 39 **Valenzuela-Vallejo L**, Mantzoros CS. Time to transition from a negative nomenclature describing what NAFLD is not, to a novel, pathophysiology-based, umbrella classification of fatty liver disease (FLD). *Metabolism* 2022; **134**: 155246 [PMID: 35780909 DOI: 10.1016/j.metabol.2022.155246]
  - 40 **Fouad Y**, Elwakil R, Elshahar M, Said E, Bazeed S, Ali Gomaa A, Hashim A, Kamal E, Mehrez M, Attia D. The NAFLD-MAFLD debate: Eminence vs evidence. *Liver Int* 2021; **41**: 255-260 [PMID: 33220154 DOI: 10.1111/liv.14739]
  - 41 **Eslam M**, Sanyal AJ, George J; International Consensus Panel. MAFLD: A Consensus-Driven Proposed Nomenclature for Metabolic Associated Fatty Liver Disease. *Gastroenterology* 2020; **158**: 1999-2014.e1 [PMID: 32044314 DOI: 10.1053/j.gastro.2019.11.312]
  - 42 **Eslam M**, Newsome PN, Sarin SK, Anstee QM, Targher G, Romero-Gomez M, Zelber-Sagi S, Wai-Sun Wong V, Dufour JF, Schattenberg JM, Kawaguchi T, Arrese M, Valenti L, Shiha G, Tiribelli C, Yki-Järvinen H, Fan JG, Grønbaek H, Yilmaz Y, Cortez-Pinto H, Oliveira CP, Bedossa P, Adams LA, Zheng MH, Fouad Y, Chan WK, Mendez-Sanchez N, Ahn SH, Castera L, Bugianesi E, Ratzliff V, George J. A new definition for metabolic dysfunction-associated fatty liver disease: An international expert consensus statement. *J Hepatol* 2020; **73**: 202-209 [PMID: 32278004 DOI: 10.1016/j.jhep.2020.03.039]
  - 43 **Alomari M**, Rashid MU, Chadalavada P, Ragheb J, Zafar H, Suarez ZK, Khazaaleh S, Gonzalez AJ, Castro FJ. Comparison between metabolic-associated fatty liver disease and nonalcoholic fatty liver disease: From nomenclature to clinical outcomes. *World J Hepatol* 2023; **15**: 477-496 [PMID: 37206648 DOI: 10.4254/wjh.v15.i4.477]
  - 44 **Kim D**, Konyn P, Sandhu KK, Dennis BB, Cheung AC, Ahmed A. Metabolic dysfunction-associated fatty liver disease is associated with increased all-cause mortality in the United States. *J Hepatol* 2021; **75**: 1284-1291 [PMID: 34380057 DOI: 10.1016/j.jhep.2021.07.035]
  - 45 **Younossi ZM**, Paik JM, Al Shabeeb R, Golabi P, Younossi I, Henry L. Are there outcome differences between NAFLD and metabolic-associated fatty liver disease? *Hepatology* 2022; **76**: 1423-1437 [PMID: 35363908 DOI: 10.1002/hep.32499]
  - 46 **Younossi ZM**, Rinella ME, Sanyal AJ, Harrison SA, Brunt EM, Goodman Z, Cohen DE, Loomba R. From NAFLD to MAFLD: Implications of a Premature Change in Terminology. *Hepatology* 2021; **73**: 1194-1198 [PMID: 32544255 DOI: 10.1002/hep.31420]
  - 47 **Méndez-Sánchez N**, Zheng MH, Kawaguchi T, Sarin SK. Editorial: The Metabolic (Dysfunction) Associated Fatty Liver Disease (MAFLD)-Non-Alcoholic Fatty Liver Disease (NAFLD) Debate: A Forced Consensus and The Risk of a World Divide. *Med Sci Monit* 2022; **28**: e938080 [PMID: 36017581 DOI: 10.12659/MSM.938080]
  - 48 **Rinella ME**, Lazarus JV, Ratzliff V, Francque SM, Sanyal AJ, Kanwal F, Romero D, Abdelmalek MF, Anstee QM, Arab JP, Arrese M, Bataller R, Beuers U, Boursier J, Bugianesi E, Byrne CD, Castro Narro GE, Chowdhury A, Cortez-Pinto H, Cryer DR, Cusi K, El-Kassab M, Klein S, Eskridge W, Fan J, Gawrieh S, Guy CD, Harrison SA, Kim SU, Koot BG, Korenjak M, Kowdley KV, Lacaille F, Loomba R, Mitchell-Thain R, Morgan TR, Powell EE, Roden M, Romero-Gómez M, Silva M, Singh SP, Sookoian SC, Spearman CW, Tiniakos D, Valenti L, Vos MB, Wong VW, Xanthakos S, Yilmaz Y, Younossi Z, Hobbs A, Villota-Rivas M, Newsome PN; NAFLD Nomenclature consensus group. A multisociety Delphi consensus statement on new fatty liver disease nomenclature. *Hepatology* 2023; **78**: 1966-1986 [PMID: 37363821 DOI: 10.1097/HEP.0000000000000520]
  - 49 **Yoon EL**, Jun DW. Waiting for the changes after the adoption of steatotic liver disease. *Clin Mol Hepatol* 2023; **29**: 844-850 [PMID: 37670441 DOI: 10.3350/cmh.2023.0291]



Published by **Baishideng Publishing Group Inc**  
7041 Koll Center Parkway, Suite 160, Pleasanton, CA 94566, USA

**Telephone:** +1-925-3991568

**E-mail:** [office@baishideng.com](mailto:office@baishideng.com)

**Help Desk:** <https://www.f6publishing.com/helpdesk>

<https://www.wjgnet.com>

