

# World Journal of *Radiology*

*World J Radiol* 2023 June 28; 15(6): 157-215



**MINIREVIEWS**

- 157 Acute pancreatitis: Structured report template of magnetic resonance imaging  
*Song LJ, Xiao B*
- 170 Radiological parameters to predict pancreatic texture: Current evidence and future perspectives  
*Kalayarasan R, Himaja M, Ramesh A, Kokila K*

**ORIGINAL ARTICLE****Retrospective Study**

- 182 Computed tomography angiographic study of surgical anatomy of thyroid arteries: Clinical implications in neck dissection  
*Bhardwaj Y, Singh B, Bhadoria P, Malhotra R, Tarafdar S, Bisht K*

**Observational Study**

- 191 Role of contrast-enhanced serial/spot abdominal X-rays in perioperative follow-up of patients undergoing abdominal surgery: An observational clinical study  
*Dilek ON, Atay A, Gunes O, Karahan F, Karasu S*

**Prospective Study**

- 201 Interobserver reliability of computed tomography angiography in the assessment of ruptured intracranial aneurysm and impact on patient management  
*Elmokadem AH, Elged BA, Abdel Razek A, El-Serougy LG, Kasem MA, EL-Adalany MA*

**ABOUT COVER**

Editorial Board Member of *World Journal of Radiology*, Linda Agolli, MD, Doctor, Research Scientist, Department of Radiation Oncology, Faculty of Medicine, University Hospital Carl Gustav Carus, Dresden 01307, Germany. linda.agolli@gmail.com

**AIMS AND SCOPE**

The primary aim of *World Journal of Radiology* (WJR, *World J Radiol*) is to provide scholars and readers from various fields of radiology with a platform to publish high-quality basic and clinical research articles and communicate their research findings online.

WJR mainly publishes articles reporting research results and findings obtained in the field of radiology and covering a wide range of topics including state of the art information on cardiopulmonary imaging, gastrointestinal imaging, genitourinary imaging, musculoskeletal imaging, neuroradiology/head and neck imaging, nuclear medicine and molecular imaging, pediatric imaging, vascular and interventional radiology, and women's imaging.

**INDEXING/ABSTRACTING**

The WJR is now abstracted and indexed in PubMed, PubMed Central, Emerging Sources Citation Index (Web of Science), Reference Citation Analysis, China National Knowledge Infrastructure, China Science and Technology Journal Database, and Superstar Journals Database. The 2022 edition of Journal Citation Reports® cites the 2021 Journal Citation Indicator (JCI) for WJR as 0.48.

**RESPONSIBLE EDITORS FOR THIS ISSUE**

Production Editor: Si Zhao; Production Department Director: Xu Guo; Editorial Office Director: Jia-Ping Yan.

**NAME OF JOURNAL**

*World Journal of Radiology*

**ISSN**

ISSN 1949-8470 (online)

**LAUNCH DATE**

January 31, 2009

**FREQUENCY**

Monthly

**EDITORS-IN-CHIEF**

Thomas J Vogl

**EDITORIAL BOARD MEMBERS**

<https://www.wjgnet.com/1949-8470/editorialboard.htm>

**PUBLICATION DATE**

June 28, 2023

**COPYRIGHT**

© 2023 Baishideng Publishing Group Inc

**INSTRUCTIONS TO AUTHORS**

<https://www.wjgnet.com/bpg/gerinfo/204>

**GUIDELINES FOR ETHICS DOCUMENTS**

<https://www.wjgnet.com/bpg/gerinfo/287>

**GUIDELINES FOR NON-NATIVE SPEAKERS OF ENGLISH**

<https://www.wjgnet.com/bpg/gerinfo/240>

**PUBLICATION ETHICS**

<https://www.wjgnet.com/bpg/gerinfo/288>

**PUBLICATION MISCONDUCT**

<https://www.wjgnet.com/bpg/gerinfo/208>

**ARTICLE PROCESSING CHARGE**

<https://www.wjgnet.com/bpg/gerinfo/242>

**STEPS FOR SUBMITTING MANUSCRIPTS**

<https://www.wjgnet.com/bpg/gerinfo/239>

**ONLINE SUBMISSION**

<https://www.f6publishing.com>



## Radiological parameters to predict pancreatic texture: Current evidence and future perspectives

Raja Kalayarasan, Mandalapu Himaja, Ananthakrishnan Ramesh, Kathirvel Kokila

**Specialty type:** Radiology, nuclear medicine and medical imaging

**Provenance and peer review:** Invited article; Externally peer reviewed.

**Peer-review model:** Single blind

**Peer-review report's scientific quality classification**

Grade A (Excellent): 0  
Grade B (Very good): 0  
Grade C (Good): C  
Grade D (Fair): D  
Grade E (Poor): 0

**P-Reviewer:** Kikuyama M, Japan; Yang F, China

**Received:** April 26, 2023

**Peer-review started:** April 26, 2023

**First decision:** May 19, 2023

**Revised:** June 3, 2023

**Accepted:** June 14, 2023

**Article in press:** June 14, 2023

**Published online:** June 28, 2023



**Raja Kalayarasan, Mandalapu Himaja,** Department of Surgical Gastroenterology, Jawaharlal Institute of Postgraduate Medical Education and Research, Puducherry 605006, India

**Ananthakrishnan Ramesh, Kathirvel Kokila,** Department of Radiodiagnosis, Jawaharlal Institute of Postgraduate Medical Education and Research, Puducherry 605006, India

**Corresponding author:** Raja Kalayarasan, MBBS, MS, MCh, FRCS (Ed), Additional Professor, Department of Surgical Gastroenterology, Jawaharlal Institute of Postgraduate Medical Education and Research, Room No. 5442, 4<sup>th</sup> floor, Super Specialty Block, Puducherry 605006, India. [kalayarasanraja@yahoo.com](mailto:kalayarasanraja@yahoo.com)

### Abstract

Preoperative prediction of the postoperative pancreatic fistula risk is critical in the current era of minimally invasive pancreatic surgeries to tailor perioperative management, thereby minimizing postoperative morbidity. Pancreatic duct diameter can be readily measured by any routine imaging used to diagnose pancreatic disease. However, radiological evaluation of pancreatic texture, an important determinant of pancreatic fistula, has not been widely used to predict the risk of postoperative pancreatic fistula. Qualitative and quantitative assessment of pancreatic fibrosis and fat fraction provides the basis for predicting pancreatic texture. Traditionally computed tomography has been utilized in identifying and characterizing pancreatic lesions and background parenchymal pathologies. With the increasing utilisation of endoscopic ultrasound and magnetic resonance imaging for evaluating pancreatic pathologies, elastography is emerging as a promising tool for predicting pancreatic texture. Also, recent studies have shown that early surgery for chronic pancreatitis is associated with better pain relief and preservation of pancreatic function. Pancreatic texture assessment can allow early diagnosis of chronic pancreatitis, facilitating early intervention. The present review outlines the current evidence in utilizing various imaging modalities for determining the pancreatic texture based on different parameters and image sequences. However, multidisciplinary investigations using strong radiologic-pathologic correlation are needed to standardize and establish the role of these non-invasive diagnostic tools in predicting pancreatic texture.

**Key Words:** Pancreatic fistula; Minimally invasive; Pancreaticoduodenectomy; Pancreatic cancer; Neoplasms; Computed tomography; Endoscopic ultrasound; Ultrasonography;

Magnetic resonance imaging

©The Author(s) 2023. Published by Baishideng Publishing Group Inc. All rights reserved.

**Core Tip:** Preoperative prediction of pancreatic texture and pancreatic fistula risk can guide selecting patients who could derive maximum benefit from minimally invasive pancreatoduodenectomy. Also, pancreatic texture evaluation could facilitate early diagnosis of chronic pancreatitis. Endoscopic ultrasound and magnetic resonance imaging-based elastography has improved the diagnostic accuracy of pancreatic fibrosis. Future studies should focus on combining different radiological modalities and correlating with histological parameters to standardize the radiological evaluation of pancreatic texture.

**Citation:** Kalayarasan R, Himaja M, Ramesh A, Kokila K. Radiological parameters to predict pancreatic texture: Current evidence and future perspectives. *World J Radiol* 2023; 15(6): 170-181

**URL:** <https://www.wjgnet.com/1949-8470/full/v15/i6/170.htm>

**DOI:** <https://dx.doi.org/10.4329/wjr.v15.i6.170>

## INTRODUCTION

Pancreatoduodenectomy (PD) is the primary treatment for periampullary and pancreatic malignancies. Advancements in surgical techniques and perioperative management reduced the mortality after PD to less than 5% in high-volume centers[1]. However, PD-related morbidity remains high at 30%-50%[2,3]. Postoperative pancreatic fistula (POPF) is the primary determinant of morbidity and mortality after PD. Hence it is crucial to identify patients at high risk of POPF. Previous studies have identified pancreatic texture, pancreatic duct diameter, pancreatic stump ischemia, and operative blood loss as significant risk factors for POPF[4-8].

Pancreatic texture has been reported as an important predictor of POPF[6,7]. Soft pancreas is associated with increased risk of POPF and a firm pancreas is protective against POPF. The higher the fat fraction in the pancreas, the softer the pancreas is, however it becomes harder with the increasing grade of fibrosis. Traditionally assessment of the pancreatic texture is done by intraoperative palpation or histological evaluation of the operative specimen[7]. However, these assessment techniques cannot be used for the preoperative prediction of POPF. Also, intraoperative assessment of pancreatic texture during minimally invasive surgeries, especially the robotic approach, is challenging. With advancements in surgical techniques and instrumentation, a minimally invasive approach has been increasingly used to perform PD. However, multicenter randomized controlled trials (RCTs), including the recent Chinese trial, have failed to show short-term clinical benefits with minimally invasive PD compared to the open approach[9,10]. The results of these RCTs underscore that in PD, morbidity related to the procedure rather than access determines the short-term outcomes. As most of the morbidity in PD is related to POPF, preoperative prediction of patients with high risk of POPF can guide in adopting the intraoperative and postoperative management to reduce the POPF-related morbidity and thereby reducing the overall morbidity of PD. It also helps select patients at low risk of POPF who will benefit from minimally invasive PD. Hence, attempts have been made to correlate preoperative radiological parameters with pancreatic texture[11-16].

Another application of pancreatic texture evaluation is in patients with chronic pancreatitis. Recent studies have shown that early intervention for patients with chronic pancreatitis is associated with better outcomes than delayed intervention[17,18]. Pancreatic texture evaluation could facilitate the early identification of pancreatic fibrosis. The commonly employed diagnostic modalities for the assessment of pancreatic lesions are ultrasonography (USG), computed tomography (CT), magnetic resonance imaging (MRI), and endoscopic US (EUS). The present review aims to provide an overview of various parameters that can be assessed with each radiological investigation to detect the presence of fatty or fibrotic pancreas and predict the pancreatic texture.

## PANCREATIC TEXTURE AND POSTOPERATIVE PANCREATIC FISTULA

The association between pancreatic texture and POPF risk has been documented in multiple retrospective and prospective studies. Kawai *et al*[4] in a multicenter study analyzed the risk factors for POPF in 1239 patients who underwent pancreatoduodenectomy. The authors concluded that soft pancreas was one of the significant risk factors for clinical pancreatic fistula. Patients with soft pancreatic texture are at 2.7 times more risk of developing POPF. Ansorge *et al*[5], in a single-center

prospective study of 164 patients reported that softer pancreatic texture is associated with a significantly higher incidence of POPF ( $P < 0.001$ ) and a higher incidence of symptomatic postoperative peripancreatic collections ( $P = 0.071$ ) compared to those with firm pancreatic texture. Ridolfi *et al*[6] evaluated the morpho histological features of pancreatic stump after pancreatoduodenectomy in 143 patients and found them to be the primary determinant of pancreatic fistula after pancreatoduodenectomy. A soft pancreas was strongly associated with POPF development and with high-grade POPF. In their study 42% of patients with soft pancreas developed a high-grade fistula, compared to 4% of patients with firm pancreatic texture ( $P < 0.001$ ). In their study pancreatic texture was confirmed with histological correlation using fibrosis and inflammation scores. Hu *et al*[7] retrospectively analysed 539 patients who underwent pancreatoduodenectomy and found a significant correlation between pancreatic texture and POPF by univariate and multivariate analysis.

However similar correlation could not be established between pancreatic texture and POPF after distal pancreatectomy. This could be because of a different mechanism for leak and fistula formation from the pancreatic remnant after distal pancreatectomy compared to pancreaticoduodenectomy, which includes pancreatoenteric anastomosis. Chong *et al*[8], in a meta-analysis that included 43 studies with 8864 patients, found no difference in clinically relevant POPF rate between soft pancreas (25.3%, 373/1477) and hard pancreas (13.5%, 72/535) ( $P = 0.46$ ). Pancreatic gland texture and duct size are not associated with the development of pancreatic fistula following distal pancreatectomy, unlike that of pancreatoduodenectomy. Hence, assessment of pancreatic texture is more useful in patients undergoing pancreatoduodenectomy compared to those undergoing distal pancreatectomy.

## ULTRASONOGRAPHY ABDOMEN

Transabdominal USG is the commonly used initial investigation to evaluate pancreatic pathology. The grayscale B- mode USG can evaluate the echotexture of the pancreas. The echotexture of the normal pancreas is isoechoic or slightly hyperechoic compared to the normal liver and shows a granular appearance with a smooth or minimally lobulated outline (Figure 1). With age, the echogenicity of the pancreas increases due to atrophy with fatty replacement. A fatty pancreas often occurs at the same time as fatty liver, which makes diagnosis more challenging. The most common limitations in scanning the pancreas by transabdominal approach are abdominal fat in obese patients and bowel air. As predicting pancreatic texture by routine B-mode USG is challenging, USG elastography has recently been used to measure the elasticity of different tissues[19,20].

### Elastography

Elastography measures the stiffness of various organs and has been used to evaluate liver fibrosis and breast lesions[19,20]. Elastography of the pancreas can be performed using transabdominal USG, EUS, or MRI[21]. The techniques of USG elastography include strain elastography and shear wave elastography (SWE)[21]. The stiffness of tissue in the strain elastography is estimated by measuring the grade of strain generated by external pressure: the greater the strain, the softer the stiffness of the target tissue. The SWE relies on the principle of acoustic radiation force impulse (ARFI) using a USG probe which propagates through the tissue, and stiffness is estimated by measuring the propagation speed of the shear wave (Figure 1). The shear wave velocity (SWV) depends on the stiffness of the tissue: the higher the SWV, the harder the target tissue[22,23]. As SWE is less operator-dependent, it is preferred over strain elastography. Strain elastography is challenging to measure when the ultrasound probe, the pancreas, and the aorta are not in line. Hence it is easy to get a fine elastogram in the pancreatic body but not in the pancreatic head and tail regions. However, SWE can be easily performed anywhere in the pancreas because ARFI can be emitted wherever desired. Over the last few years, there has been increasing interest in assessing the role of elastography in evaluating pancreatic texture, differentiating benign and malignant pancreatic lesions, and diagnosing chronic pancreatitis[24-28].

Yashima *et al*[27] used ARFI elastography of the pancreas and reported high elasticity in patients with chronic pancreatitis compared to normal patients. SWV in patients with chronic pancreatitis was significantly higher than that in healthy volunteers in each part of the pancreas (Figure 2). However, the measurement was difficult in the tail of the pancreas (Table 1). Harada *et al*[29] reported a good correlation between SWV and the histological grade of fibrosis. Pancreatic SWV, measured by preoperative ARFI imaging, was shown to have significant correlations with the grade of pathologic fibrosis, influencing the risk of POPF.

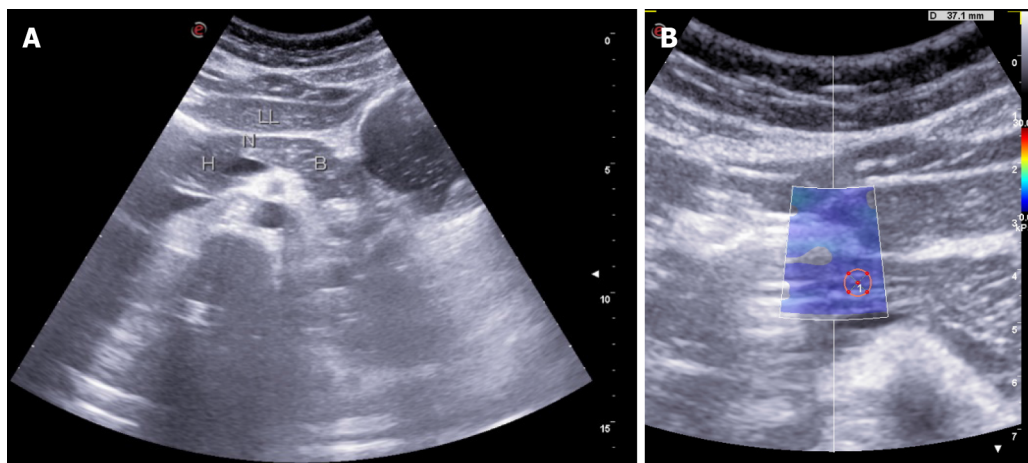
Llamoza-Torres *et al*[30], in their study of 33 patients, established the diagnostic accuracy of transabdominal USG-guided elastography in evaluating patients with suspected chronic pancreatitis. Patients included in the study were initially evaluated by EUS and/or MRI to establish their chronic pancreatitis status. Also, none of the included patients were found to have advanced-stage pancreatitis. The study results underscore the role of trans-abdominal USG elastography in assessing patients with early-stage chronic pancreatitis. However, the correlation with histological fibrosis was not evaluated. Further multicenter trials would be crucial to establish the role of transabdominal USG elastography in evaluating pancreatic texture and diagnosing early-stage chronic pancreatitis.



**Table 1 Summary of studies evaluating the role of transabdominal ultrasonography in assessing pancreatic texture**

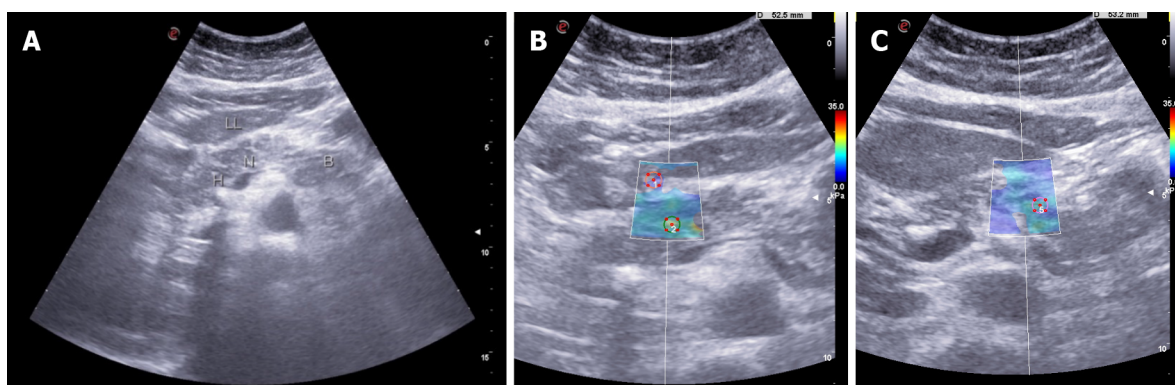
Ref.	Number of patients	Aim	Results	Conclusion	Histological correlation
Yashima <i>et al</i> [27], 2012	98	Efficacy of elastography to diagnose chronic pancreatitis	SWV cut off – 1.40 m/s; Sensitivity 75%; Specificity 72%; PPV 69%; NPV 78%	SWV in chronic pancreatitis patients higher than healthy volunteers	Not evaluated
Harada <i>et al</i> [29], 2016	68	Correlation of SWV with pathological degree of fibrosis	SWV cut off – 1.54 m/s; Sensitivity 91%; Specificity 75%; PPV 67%; NPV 93%	SWV significantly correlated with grade of fibrosis and postoperative pancreatic fistula	Good
Llamoza-Torres <i>et al</i> [30], 2016	33	Accuracy of elastography to diagnose chronic pancreatitis	SWV cut off - 1.4 m/s; Sensitivity 58%; Specificity 81%; PPV 76%; NPV 65%	SWV significantly correlated with EUS findings	Not evaluated

SWV: Shear wave velocity; PPV: Positive predictive value; NPV: Negative predictive value; EUS: Endoscopic ultrasonography.



DOI: 10.4329/wjr.v15.i6.170 Copyright ©The Author(s) 2023.

**Figure 1 Transabdominal ultrasonography.** A: Grayscale appearance of the normal pancreas (LL- Left lobe of liver, H- Head of pancreas, N- neck of pancreas, B-Body of pancreas). The pancreas is isoechoic compared to normal liver and shows a granular appearance and smooth outline; B: 2D Shear wave elastography measurement from the normal pancreas-neck region ( $3.84 \pm 0.45$  kPa).



DOI: 10.4329/wjr.v15.i6.170 Copyright ©The Author(s) 2023.

**Figure 2 Shear wave velocity in patients with chronic pancreatitis was significantly higher than that in healthy volunteers in each part of the pancreas.** A: Grayscale appearance of the pancreas in chronic calcific pancreatitis. (LL- Left lobe of liver, H- Head of pancreas, N- neck of pancreas, B-Body of pancreas). It shows a focal hyperechoic signal compared to normal liver and a mildly lobulated outline, a focus of calcification in the head region with posterior acoustic shadowing; B: 2D Shear wave elastography measurement of the pancreas in chronic calcific pancreatitis - head region ( $15.55 \pm 2.64$  kPa); C: 2D Shear wave elastography measurement of the pancreas in chronic calcific pancreatitis - region ( $11 \pm 2.07$  kPa).

## COMPUTED TOMOGRAPHY ABDOMEN

Pancreatic texture on CT abdomen can be predicted based on the patterns of attenuation and enhancement of its parenchyma on various phases. They were evaluated as preoperative predictors of POPF in several studies[11-15]. While pancreatic attenuation index (PAI) like Liver Attenuation Index can measure pancreatic fat, pancreatic enhancement ratio (PER) can be measured to grade the pancreatic fibrosis (Figure 3). The higher the PER, the firmer the gland is. The presence of a higher PER and lower PAI can be considered to be associated with the low risk of development of POPF after PD.

### Pancreatic attenuation index

PAI has been proposed as a simple tool by Yardimci *et al*[31] to assess pancreatic fat fraction by evaluating 76 patients who underwent PD. PAI was calculated with non-enhanced computed tomography by dividing the pancreas density measured in Household Units by the spleen density. They reported that higher PAI was associated with a high POPF rate and determined the value of 0.67 as an optimum cut-off value for predicting POPF. PAI has been reported to be useful in assessing pancreatic fat fraction by few other studies as well[11,12]. However, Gnanasekaran *et al*[32] reported that PAI was not helpful in predicting CR-POPF. Also, in their study, PAI did not correlate with histological estimation of pancreatic fat fraction. It might be due to the use of a region of interest-based assessment. In future studies, area-based assessment for the pancreatic fat fraction should be correlated with histopathological fat fraction.

### Pancreatic enhancement ratio

An increase in the fibrosis of the pancreas makes the pancreatic texture hard. A fibrotic pancreas shows delayed enhancement in the pancreatic phase and nearly normal enhancement in the hepatic phase on dual-phase CT[33]. In contrast, the normal pancreas shows maximum enhancement in the pancreatic phase and washout in the hepatic phase[33]. Thus, predicting the degree of pancreatic fibrosis may be possible on analysis of enhancement patterns on pancreatic protocol CT done routinely to evaluate pancreatic tumors.

Kang *et al*[15] determined a PER cut-off of 1.10 as a useful predictor for POPF based on their retrospective analysis of 146 patients. PER on the equilibrium phase was significantly higher in the patients without POPF compared to patients with POPF ( $2.26 \pm 3.63$  vs  $1.04 \pm 0.51$ ,  $P = 0.001$ ). In the logistic regression analyses, PER was an independent predictor for the development of POPF (odds ratio = 0.243,  $P = 0.002$ ). Maehira *et al*[13] retrospectively analysed 115 patients and concluded the pancreatic enhancement pattern as a reliable predictor for the development of POPF. Gnanasekaran *et al*[32] showed a positive correlation of PER with pancreatic fibrosis. Their study utilised a PER cut-off value of 0.661 which was 78% sensitive and 55 % specific in predicting POPF (Table 2). In the same study, PAI is reported to have negative correlation with PER, indicating that the pancreatic fat content and fibrosis are inversely related. However, the estimation of PER depends on the perfusion of organs with injected contrast which relies upon the hemodynamic status of the subjects. In comparison, PAI is independent of contrast injection.

## MAGNETIC RESONANCE IMAGING

MRI allows the detection of fibrotic change of pancreatic parenchyma and hence can predict the risk of POPF. A normal pancreas shows hyperintensity on T1-weighted images irrespective of fat saturation. The fibrosis makes the pancreatic parenchyma to lose its high signal intensity (SI) owing to the replacement of the high protein content of the pancreas by fibrosis.

Winston *et al*[34] reported that the SI of pancreatic parenchyma, compared to that of the liver, decreases on fat-saturated T1-weighted images in patients with type 2 diabetes. Noda *et al*[35] found that the pancreatic fibrosis grade was negatively correlated with the SI ratio on in-phase T1-weighted images ( $r = -0.67$ ,  $P = -0.0002$ ). Another retrospective study by Watanabe *et al*[36] on 29 patients demonstrated that the SI ratio on T1-weighted images constantly decreased as the pancreatic fibrosis progressed. The higher risk of POPF is associated with a high SI ratio. Multiple regression analysis showed that pancreas-to-muscle SI ratios on T1-weighted images and apparent diffusion coefficient (ADC) values were independently associated with pancreatic fibrosis ( $r(2) = 0.66$ ,  $P < 0.001$ ) and with activated pancreatic stellate cell expression ( $r(2) = 0.67$ ,  $P < 0.001$ ). The mean pancreas-to-muscle SI ratio ( $\pm$  standard deviation) on T1-weighted images was higher ( $P = 0.0029$ ) for patients with POPF ( $1.6 \pm 0.2$ ) than for those without ( $1.2 \pm 0.2$ ), and the odds ratio for POPF was 21.3 in patients with an SI ratio of 1.41 and higher[36].

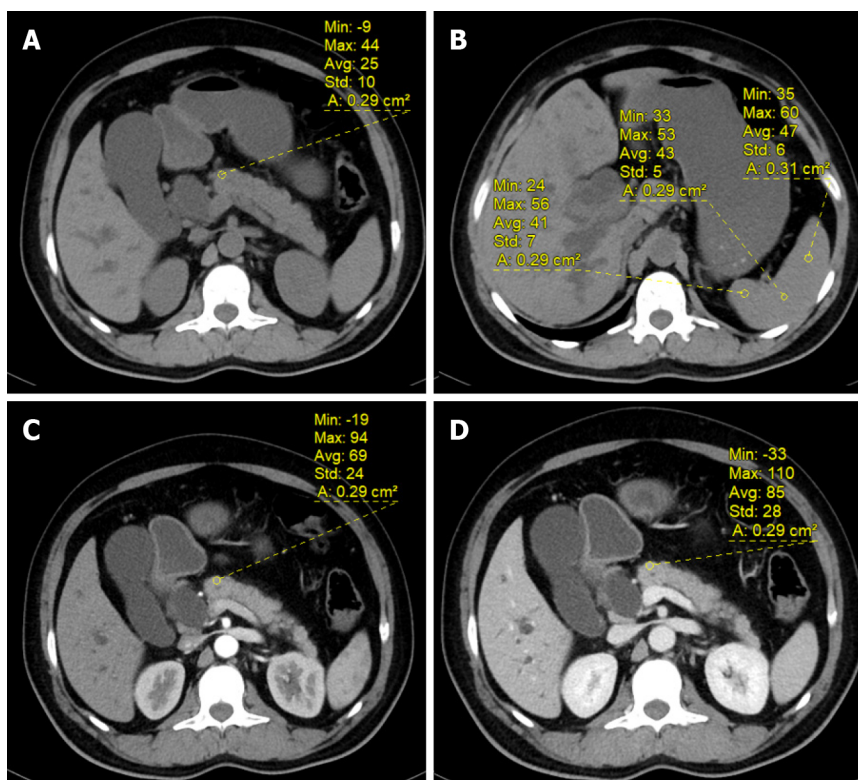
Kim *et al*[16], in their pilot study, studied the correlation of pancreatic fibrosis with POPF after PD with the use of breath-hold unenhanced fat-suppressed T1 weighted images. The pancreas-to-liver SI ratio between the fistula and no fistula groups was  $-0.0009 \pm 0.2$  and  $-0.1297 \pm 0.2$ , respectively ( $P = 0.0004$ ). Each group's pancreas-to-spleen SI ratio was  $0.423 \pm 0.25$  and  $0.288 \pm 0.32$ , respectively ( $P = 0.014$ ). Using qualitative analysis where the pancreas SI was qualitatively assessed relative to liver and



**Table 2** Summary of studies evaluating the role of computed tomography abdomen in assessing pancreatic texture

Ref.	Number of patients	PER calculation	Results	Histological correlation
Kang <i>et al</i> [15], 2017	146	1 Equilibrium phase -Pre contrast/ Pre contrast (EP- Pre/Pre); 2 Equilibrium phase -Pre contrast/ Arterial phase - Pre contrast (EP- Pre/AP-Pre)	Mean PER was significantly higher in patients without POPF than in patients with POPF. PER cut off: EP- Pre/Pre -1.10; Pre/AP-Pre - 0.60	Not evaluated
Maehira <i>et al</i> [13], 2019	115	1 Arterial phase/Portal phase (A/P); 2 Portal phase/Late phase (P/L)	Enhancement ratio is significantly higher in POPF group. PER cut off: A/P - 1.19; P/L - 1.17	Not evaluated
Gnanasekaran S <i>et al</i> [32], 2022	61	Equilibrium phase -Pre contrast/ Arterial phase - Pre contrast (EP-Pre/AP-Pre)	PER was significantly higher in patients without POPF than in patients with POPF, PER cut off - 0.673	PER correlated well with fibrosis

PER: Pancreatic enhancement ratio; POPF: Postoperative pancreatic fistula.



DOI: 10.4329/wjrr.v15.i6.170 Copyright ©The Author(s) 2023.

**Figure 3** Calculation of pancreatic attenuation index and pancreatic enhancement ratio. A: Hounsfield unit (HU) of the pancreatic neck in the plain phase; B: HU of the spleen in plain phase; C: HU of the pancreatic neck in the arterial phase; D: HU of the pancreatic neck in the equilibrium phase. ROI: Region of interest.

spleen SI using a five-point scale (-2, -1, 0, 1, 2), the SI ratios were 1.27 and 0.66 in each group ( $P = 0.013$ ). The diagnostic performance for preoperative predictions of POPF was better with the qualitative analysis ( $Az = 0.653$ ) than with the pancreas-to-liver SI ratio ( $Az = 0.640$ ) and pancreas-spleen SI ratio ( $Az = 0.613$ ); although, statistically significant difference was not found in each MRI parameter.

Yoon *et al*[37] reported that multiparametric MR imaging of the pancreas, including imaging with the T2\*-corrected Dixon technique and intravoxel incoherent motion diffusion-weighted imaging (DWI), may yield quantitative information regarding pancreatic steatosis and fibrosis. The mean pancreas-to-muscle SI ratio on T1-weighted MRI values for F0, F1, and the cut-off value for predicting POPF was 1.51, 1.48, and 1.40, respectively (Table 3). Fukada *et al*[38], in their single-center retrospective study comprising 117 patients, reported 1.37 as the cut-off value for the pancreas-to-muscle SI ratio for predicting POPF.

**Table 3 Summary of studies evaluating the role of magnetic resonance imaging abdomen signal intensity in assessing pancreatic texture**

Ref.	Number of patients	Aim	Parameter studied	Results	Conclusion	Histological correlation
Winston <i>et al</i> [34], 1995	89	Correlation of pancreatic SI to predict the presence of pancreatic disease	PLSI	Accuracy -86%; PPV- 88	Pancreatic SI less than that of liver correlates highly with pancreatic disease, especially in younger patients	Not evaluated
Kim <i>et al</i> [16], 2009	43	Accuracy of non-enhanced fat-suppressed T1W MRI in predicting POPF	PLSI, PSSI	PLSI cut off -0.12097 (sensitivity -36%, specificity - 89%); PSSI cut off -0.29979 (sensitivity-79%, specificity-45%)	PLSI, PSSI significantly differed between POPF group and non POPF group, hence, can be useful in predicting POPF	Good
Watanabe <i>et al</i> [36], 2014	29	Efficacy of MRI in assessing degrees of pancreatic fibrosis and predicting POPF	PMSI in unenhanced T1W and T2 W images	Odds ratio of PMSI in T1 W for POPF was 21.3 in patients with an SI ratio of 1.41 and higher	T1W SI ratio and ADC measurements useful to detect advanced pancreatic fibrosis and occurrence of POPF	Good
Noda <i>et al</i> [35], 2016	29	Evaluate the noncontrast-enhanced MRI to grade pancreatic fibrosis and correlate with HbA1c values	PMSI on in- and opposed-phase T1W images	The pancreatic fibrosis grade and HbA1c value were negatively correlated with the SI ratio on opposed-phase T1W images	PMSI could be a potential biomarker for pancreatic fibrosis and elevated HbA1c values	Good
Yoon <i>et al</i> [37], 2016	165	Evaluate the multiparametric pancreatic MRI in the quantification of pancreatic fibrosis and determine relation with POPF	PMSI on in- and opposed-phase T1, IVIM DW imaging; Perfusion fraction (f)	Mean SI ratio for fibrosis; F0 - 1.51; F1 - 1.48; SI ratio cutoff for POPF - 1.40; Odds of developing POPF for a 1% increase in f were 1.17	Multiparametric MR imaging of the pancreas may quantify pancreatic steatosis and fibrosis, and f was significantly associated with POPF	Good
Fukada <i>et al</i> [38], 2022	117	Predictive ability of SI ratio on T1W MRI for POPF after distal pancreatectomy	PMSI on T1W	SI ratio cutoff for POPF - 1.37; Sensitivity- 96.3% Specificity- 52.0%	PMSI is a quantitative biomarker for pancreatic characteristics	Good

T1W: T1 weighted; T2W: T2 Weighted; MRI: Magnetic resonance imaging; POPF: Postoperative pancreatic fistula; PLSI: Pancreas-to-liver signal intensity ratio; PSSI: Pancreas-to-spleen signal intensity ratio; PMSI: Pancreas-to-muscle signal intensity ratio; SI: Signal intensity; IVIM: Intravoxel incoherent motion.

### Diffusion-weighted imaging

DWI is used to evaluate fibrosis using ADC values. In the fibrotic pancreas, diffusion is restricted because of the replacement of normal pancreatic parenchyma with fibrous tissue. ADC values can be used to identify the presence of fibrosis and to grade its extent. Studies have reported lower ADC values in chronic pancreatitis patients [39]. Bieliuniene *et al* [40] identified a significant negative correlation between ADC value and histologically determined pancreatic fibrosis (PF) ( $r = -0.752$ ,  $P < 0.001$ ). In addition, a significant negative correlation was observed between T1SI and histologically determined pancreatic fibrosis ( $r = -0.631$ ,  $P < 0.001$ ). Also, by combining the ADC and T1SI measurements, PF can be detected with greater sensitivity and specificity during the early stages of the disease when other clinical signs are absent.

Tirkes *et al* [41] conducted a multi institutional, prospective study to evaluate the diagnostic value of four quantitative MRI parameters in chronic pancreatitis: T1 relaxation time, extracellular fraction, fat signal fraction and ADC. Except ADC, all the parameters were reported to be significantly higher in the patients with chronic pancreatitis and also were showed to have moderately high diagnostic value after adjustment for covariates. A Q-MRI score has been proposed by combining these three MR parameters which was shown to have improved diagnostic performance. However, ADC values were reported to be not helpful for diagnosing chronic pancreatitis.

### Magnetic resonance elastography

Magnetic resonance elastography (MRE) can also be used to estimate pancreatic stiffness. The technique of MRE involves three steps similar to transabdominal and EUS elastography: Generation of shear waves in the tissue, acquisition of MR images depicting the propagation of the induced shear waves, and generation of elastograms, the quantitative maps of tissue stiffness by processing the acquired images of the shear waves.

Patients with chronic pancreatitis were reported to have significantly higher stiffness values than normal people (1.53 vs 1.11 kPa) [42]. Wang *et al* [43] reported the usefulness of MRE for the assessment

of the severity of chronic pancreatitis and showed that the pancreatic stiffness was significantly low in healthy controls (mean -1.21 kPa), when compared to patients with a mild degree of chronic pancreatitis (mean - 1.50 kPa), and also those with a moderate/severe degree of chronic pancreatitis (mean - 1.90 kPa).

## ENDOSCOPIC ULTRASONOGRAPHY ELASTOGRAPHY

EUS elastography is a novel diagnostic tool to assess pancreatic fibrosis. Like transabdominal ultrasound, EUS elastography can be strain elastography or SWE.

### **Strain elastography**

In strain elastography, the target tissue is compressed with a EUS probe to create a stain, which is reflected on ultrasound images. Softer tissue has a larger strain when compared to harder tissues. However, this gives only qualitative estimation of tissue elasticity. Second-generation EUS elastography has been developed, giving two semi-quantitative tissue stiffness measures[28]. The strain ratio (SR), one of two semi quantitative measure is based on comparing stiffness between specific regions of interest in two tissue areas and is expressed as a relative ratio. The strain histogram (SH) is another semi-quantitative parameter representing the selected area's mean strain value.

Six articles reported the diagnostic performance of EUS strain elastography for chronic pancreatitis; three reported SR, and three used SH (Table 4)[28,44-48]. Of them two SR articles reported that EUS elastography is helpful for differentiating the normal pancreas from chronic pancreatitis[28,47]. Two of the SH articles also reported the usefulness of EUS elastography in differentiating between normal pancreas and chronic pancreatitis[44,48]. One report showed that the SH elastography values significantly correlated with the degree of fibrosis assessed on histology of the surgical specimens[45].

### **Shear wave elastography**

Acoustic radiation force is sent to the region of interest, and this push pulse generates a shear wave at the edge. The shear wave propagates faster in harder tissues. EUS-SWE is has better diagnostic value in chronic pancreatitis than strain elastography by providing the absolute values of pancreatic hardness.

Since it is a novel investigation, only two articles report the utility of EUS-SWE[49,50]. For diagnosis of chronic pancreatitis, a SWV cut-off value of 2.19 (Rosemont criteria) and 1.96 (Japan Pancreatic Society criteria) had a sensitivity of 100% and 83%, respectively, and specificity of 94% and 100%. EUS-SWE values correlate well with the stage of chronic pancreatitis and predicted exocrine dysfunction compared to transabdominal ultrasound. EUS-SWE data are better than those published using transabdominal ultrasound[30]. However, EUS is an invasive technique compared to trans-abdominal ultrasound.

## FUTURE PERSPECTIVES

Identifying potential preoperative predictors for POPF is a critical step in our journey to improve perioperative outcomes after PD. Also, early diagnosis of chronic pancreatitis is essential to improve long-term outcomes of patients undergoing surgery for chronic pancreatitis. Recent studies have shown that pancreatic texture parameters like mean positive pixel before initiating neoadjuvant therapy, kurtosis and changes in kurtosis during neoadjuvant therapy can be used in predicting response to neoadjuvant therapy[51,52]. While the current evidence suggests the promising role of radiological parameters in predicting pancreatic texture, it is essential to understand the limitations of available evidence. Most of the studies had a smaller sample size. Hence, studies with larger sample sizes and multicentric studies are required for all the radiological modalities to determine the reference values for the normal and diseased pancreas. Also, socio-demographic variables need to be correlated with the pancreatic texture in all age groups to determine appropriate reference standards for all the available radiological modalities.

Most studies have assessed individual radiological parameter's role in predicting pancreatic texture. However, studies comparing different radiological parameters are not available. Hence future studies are required to study the efficacy of one imaging modality over the other and the effectiveness of combining several radiological modalities to devise a quantitative variable such as fistula risk score based on texture.

The accepted gold standard to find the pancreatic texture is histology. Since there can be an uneven distribution of pancreatic fatty infiltration or fibrosis, using the same focal area of the pancreas in imaging modalities and histology in future studies will provide a better correlation of pancreatic texture. Also, it is essential to understand that multiple factors influence POPF. Hence, a homogenous patient population and standardized surgical techniques are prerequisites for future studies. However, it isn't easy to achieve and reproduce that in complex procedures like PD. Nevertheless, identifying

**Table 4 Summary of studies evaluating the role of endoscopic ultrasonography strain elastography in assessing pancreatic texture**

Ref.	Parameter used	Inference
Machado <i>et al</i> [44], 2012	SH	EUS is useful in differentiating normal pancreas and chronic pancreatitis
Iglesias-Garcia <i>et al</i> [28], 2013	SR	EUS is useful in differentiating normal pancreas and chronic pancreatitis; SR EUS elastography correlated with number of Rosemont criteria ratio
Itoh <i>et al</i> [45], 2014	SH	SH EUS elastography values significantly correlated with fibrosis on histology
Dominguez-Muñoz <i>et al</i> [46], 2015	SR	SR EUS elastography values significantly correlated with exocrine dysfunction
Kim <i>et al</i> [47], 2017	SR	EUS is useful in differentiating normal pancreas and chronic pancreatitis
Kuwahara <i>et al</i> [48], 2017	SH	EUS is useful in differentiating normal pancreas and chronic pancreatitis; SH EUS elastography correlated with number of Rosemont criteria ratio

SR: Strain ratio; SH: Strain histogram; EUS: Endoscopic ultrasonography.

potential preoperative predictors for POPF is vital in decreasing the morbidity associated with PD.

## CONCLUSION

Pancreatic texture can be assessed using radiological parameters derived from preoperative imaging modalities. With advancements in imaging techniques, the accuracy of preoperative prediction of the fatty or fibrotic pancreas has improved. However, more studies are required comparing different imaging modalities to standardize their measurement. Also, the correlation of radiological parameters with histological findings is required to improve predictive accuracy.

## FOOTNOTES

**Author contributions:** Himaja M and Kokila K did the literature search and wrote the first draft of the review; Kalayarasan R and Ramesh A conceptualized the work, supervised the writing, gave intellectual inputs, and critically revised the manuscript.

**Conflict-of-interest statement:** All authors have no conflicts of interest to report.

**Open-Access:** This article is an open-access article that was selected by an in-house editor and fully peer-reviewed by external reviewers. It is distributed in accordance with the Creative Commons Attribution NonCommercial (CC BY-NC 4.0) license, which permits others to distribute, remix, adapt, build upon this work non-commercially, and license their derivative works on different terms, provided the original work is properly cited and the use is non-commercial. See: <https://creativecommons.org/licenses/by-nc/4.0/>

**Country/Territory of origin:** India

**ORCID number:** Raja Kalayarasan 0000-0003-4056-8672; Mandalapu Himaja 0009-0004-8267-2018; Ananthakrishnan Ramesh 0000-0002-1404-6400; Kathirvel Kokila 0000-0002-9157-9067.

**S-Editor:** Liu JH

**L-Editor:** A

**P-Editor:** Liu JH

## REFERENCES

- 1 Poon RT, Fan ST, Lo CM, Ng KK, Yuen WK, Yeung C, Wong J. External drainage of pancreatic duct with a stent to reduce leakage rate of pancreaticojejunostomy after pancreaticoduodenectomy: a prospective randomized trial. *Ann Surg* 2007; **246**: 425-33; discussion 433 [PMID: 17717446 DOI: 10.1097/sla.0b013e3181492c28]
- 2 Greenblatt DY, Kelly KJ, Rajamanickam V, Wan Y, Hanson T, Rettammel R, Winslow ER, Cho CS, Weber SM. Preoperative factors predict perioperative morbidity and mortality after pancreaticoduodenectomy. *Ann Surg Oncol* 2011; **18**: 2126-2135 [PMID: 21336514 DOI: 10.1245/s10434-011-1594-6]
- 3 Tzeng CW, Katz MH, Fleming JB, Lee JE, Pisters PW, Holmes HM, Varadhachary GR, Wolff RA, Abbruzzese JL,



- Vauthey JN, Aloia TA. Morbidity and mortality after pancreaticoduodenectomy in patients with borderline resectable type C clinical classification. *J Gastrointest Surg* 2014; **18**: 146-55; discussion 155 [PMID: [24129825](#) DOI: [10.1007/s11605-013-2371-6](#)]
- 4 **Kawai M**, Kondo S, Yamaue H, Wada K, Sano K, Motoi F, Unno M, Satoi S, Kwon AH, Hatori T, Yamamoto M, Matsumoto J, Murakami Y, Doi R, Ito M, Miyakawa S, Shintchi H, Natsugoe S, Nakagawara H, Ohta T, Takada T. Predictive risk factors for clinically relevant pancreatic fistula analyzed in 1,239 patients with pancreaticoduodenectomy: multicenter data collection as a project study of pancreatic surgery by the Japanese Society of Hepato-Biliary-Pancreatic Surgery. *J Hepatobiliary Pancreat Sci* 2011; **18**: 601-608 [PMID: [21491103](#) DOI: [10.1007/s00534-011-0373-x](#)]
- 5 **Ansorge C**, Strömmer L, Andrén-Sandberg Å, Lundell L, Herrington MK, Segersvärd R. Structured intraoperative assessment of pancreatic gland characteristics in predicting complications after pancreaticoduodenectomy. *Br J Surg* 2012; **99**: 1076-1082 [PMID: [22556164](#) DOI: [10.1002/bjs.8784](#)]
- 6 **Ridolfi C**, Angiolini MR, Gavazzi F, Spaggiari P, Tinti MC, Uccelli F, Madonini M, Montorsi M, Zerbi A. Morphohistological features of pancreatic stump are the main determinant of pancreatic fistula after pancreatoduodenectomy. *Biomed Res Int* 2014; **2014**: 641239 [PMID: [24900974](#) DOI: [10.1155/2014/641239](#)]
- 7 **Hu BY**, Wan T, Zhang WZ, Dong JH. Risk factors for postoperative pancreatic fistula: Analysis of 539 successive cases of pancreaticoduodenectomy. *World J Gastroenterol* 2016; **22**: 7797-7805 [PMID: [27678363](#) DOI: [10.3748/wjg.v22.i34.7797](#)]
- 8 **Chong E**, Ratnayake B, Lee S, French JJ, Wilson C, Roberts KJ, Loveday BPT, Manas D, Windsor J, White S, Pandanaboyana S. Systematic review and meta-analysis of risk factors of postoperative pancreatic fistula after distal pancreatectomy in the era of 2016 International Study Group pancreatic fistula definition. *HPB (Oxford)* 2021; **23**: 1139-1151 [PMID: [33820687](#) DOI: [10.1016/j.hpb.2021.02.015](#)]
- 9 **Wang M**, Li D, Chen R, Huang X, Li J, Liu Y, Liu J, Cheng W, Chen X, Zhao W, Tan Z, Huang H, Zhu F, Qin T, Ma J, Yu G, Zhou B, Zheng S, Tang Y, Han W, Meng L, Ke J, Feng F, Chen B, Yin X, Chen W, Ma H, Xu J, Lin R, Dong Y, Yu Y, Zhang H, Qin R; Minimally Invasive Treatment Group in the Pancreatic Disease Branch of China's International Exchange and Promotion Association for Medicine and Healthcare (MITG-P-CPAM). Laparoscopic versus open pancreatoduodenectomy for pancreatic or periampullary tumours: a multicentre, open-label, randomised controlled trial. *Lancet Gastroenterol Hepatol* 2021; **6**: 438-447 [PMID: [33915091](#) DOI: [10.1016/S2468-1253\(21\)00054-6](#)]
- 10 **van Hilst J**, de Rooij T, Bosscha K, Brinkman DJ, van Dieren S, Dijkgraaf MG, Gerhards MF, de Hingh IH, Karsten TM, Lips DJ, Luyer MD, Busch OR, Festen S, Besselink MG; Dutch Pancreatic Cancer Group. Laparoscopic versus open pancreatoduodenectomy for pancreatic or periampullary tumours (LEOPARD-2): a multicentre, patient-blinded, randomised controlled phase 2/3 trial. *Lancet Gastroenterol Hepatol* 2019; **4**: 199-207 [PMID: [30685489](#) DOI: [10.1016/S2468-1253\(19\)30004-4](#)]
- 11 **Tranchart H**, Gaujoux S, Rebours V, Vullierme MP, Dokmak S, Levy P, Couvelard A, Belghiti J, Sauvanet A. Preoperative CT scan helps to predict the occurrence of severe pancreatic fistula after pancreaticoduodenectomy. *Ann Surg* 2012; **256**: 139-145 [PMID: [22609844](#) DOI: [10.1097/SLA.0b013e318256c32c](#)]
- 12 **Lim S**, Bae JH, Chun EJ, Kim H, Kim SY, Kim KM, Choi SH, Park KS, Florez JC, Jang HC. Differences in pancreatic volume, fat content, and fat density measured by multidetector-row computed tomography according to the duration of diabetes. *Acta Diabetol* 2014; **51**: 739-748 [PMID: [24671510](#) DOI: [10.1007/s00592-014-0581-3](#)]
- 13 **Machira H**, Iida H, Mori H, Kitamura N, Miyake T, Shimizu T, Tani M. Computed Tomography Enhancement Pattern of the Pancreatic Parenchyma Predicts Postoperative Pancreatic Fistula After Pancreaticoduodenectomy. *Pancreas* 2019; **48**: 209-215 [PMID: [30589830](#) DOI: [10.1097/MPA.0000000000001229](#)]
- 14 **Hashimoto Y**, Scialabba GM, Takahashi N, Kirihara Y, Smyrk TC, Huebner M, Farnell MB. Dual-phase computed tomography for assessment of pancreatic fibrosis and anastomotic failure risk following pancreatoduodenectomy. *J Gastrointest Surg* 2011; **15**: 2193-2204 [PMID: [21948179](#) DOI: [10.1007/s11605-011-1687-3](#)]
- 15 **Kang JH**, Park JS, Yu JS, Chung JJ, Kim JH, Cho ES, Yoon DS. Prediction of pancreatic fistula after pancreatoduodenectomy by preoperative dynamic CT and fecal elastase-1 levels. *PLoS One* 2017; **12**: e0177052 [PMID: [28493949](#) DOI: [10.1371/journal.pone.0177052](#)]
- 16 **Kim Z**, Kim MJ, Kim JH, Jin SY, Kim YB, Seo D, Choi D, Hur KY, Kim JJ, Lee MH, Moon C. Prediction of post-operative pancreatic fistula in pancreaticoduodenectomy patients using pre-operative MRI: a pilot study. *HPB (Oxford)* 2009; **11**: 215-221 [PMID: [19590650](#) DOI: [10.1111/j.1477-2574.2009.00011.x](#)]
- 17 **Willner A**, Bogner A, Müsle B, Teske C, Hempel S, Kahlert C, Distler M, Weitz J, Welsch T. Disease duration before surgical resection for chronic pancreatitis impacts long-term outcome. *Medicine (Baltimore)* 2020; **99**: e22896 [PMID: [33126342](#) DOI: [10.1097/MD.00000000000022896](#)]
- 18 **Issa Y**, Kempeneers MA, Bruno MJ, Fockens P, Poley JW, Ahmed Ali U, Bollen TL, Busch OR, Dejong CH, van Duijvendijk P, van Dullemen HM, van Eijck CH, van Goor H, Hadithi M, Haveman JW, Keulemans Y, Nieuwenhuijs VB, Poen AC, Rauws EA, Tan AC, Thijs W, Timmer R, Witteman BJ, Besselink MG, van Hooft JE, van Santvoort HC, Dijkgraaf MG, Boermeester MA; Dutch Pancreatitis Study Group. Effect of Early Surgery vs Endoscopy-First Approach on Pain in Patients With Chronic Pancreatitis: The ESCAPE Randomized Clinical Trial. *JAMA* 2020; **323**: 237-247 [PMID: [31961419](#) DOI: [10.1001/jama.2019.20967](#)]
- 19 **Forestier N**, Gaus A, Herrmann E, Sarrazin C, Bojunga J, Poynard T, Albert J, Gerber L, Schneider MD, Dultz G, Zeuzem S, Friedrich-Rust M. Acoustic radiation force impulse imaging for evaluation of antiviral treatment response in chronic hepatitis C. *J Gastrointest Liver Dis* 2012; **21**: 367-373 [PMID: [23256119](#)]
- 20 **Itoh A**, Ueno E, Tohno E, Kamma H, Takahashi H, Shiina T, Yamakawa M, Matsumura T. Breast disease: clinical application of US elastography for diagnosis. *Radiology* 2006; **239**: 341-350 [PMID: [16484352](#) DOI: [10.1148/radiol.2391041676](#)]
- 21 **Kawada N**, Tanaka S. Elastography for the pancreas: Current status and future perspective. *World J Gastroenterol* 2016; **22**: 3712-3724 [PMID: [27076756](#) DOI: [10.3748/wjg.v22.i14.3712](#)]
- 22 **Yin M**, Venkatesh SK, Grimm RC, Rossman PJ, Manduca A, Ehman RL. Assessment of the pancreas with MR elastography. Proceedings of the International Society for Magnetic Resonance in Medicine; Toronto, Canada' 2008: 2627



- [DOI: [10.1109/iembs.1996.651961](https://doi.org/10.1109/iembs.1996.651961)]
- 23 **Kawada N**, Tanaka S, Uehara H, Ohkawa K, Yamai T, Takada R, Shiroeda H, Arisawa T, Tomita Y. Potential use of point shear wave elastography for the pancreas: a single center prospective study. *Eur J Radiol* 2014; **83**: 620-624 [PMID: [24445135](https://pubmed.ncbi.nlm.nih.gov/24445135/) DOI: [10.1016/j.ejrad.2013.11.029](https://doi.org/10.1016/j.ejrad.2013.11.029)]
  - 24 **Iglesias-Garcia J**, Larino-Noia J, Abdulkader I, Forteza J, Dominguez-Munoz JE. Quantitative endoscopic ultrasound elastography: an accurate method for the differentiation of solid pancreatic masses. *Gastroenterology* 2010; **139**: 1172-1180 [PMID: [20600020](https://pubmed.ncbi.nlm.nih.gov/20600020/) DOI: [10.1053/j.gastro.2010.06.059](https://doi.org/10.1053/j.gastro.2010.06.059)]
  - 25 **Ris MM**, Deitrich RA, Von Wartburg JP. Inhibition of aldehyde reductase isoenzymes in human and rat brain. *Biochem Pharmacol* 1975; **24**: 1865-1869 [PMID: [18](https://pubmed.ncbi.nlm.nih.gov/18/) DOI: [10.1016/0006-2952\(75\)90405-0](https://doi.org/10.1016/0006-2952(75)90405-0)]
  - 26 **Halaris AE**, Belendiuk KT, Freedman DX. Antidepressant drugs affect dopamine uptake. *Biochem Pharmacol* 1975; **24**: 1896-1897 [PMID: [19](https://pubmed.ncbi.nlm.nih.gov/19/) DOI: [10.1016/0006-2952\(75\)90412-8](https://doi.org/10.1016/0006-2952(75)90412-8)]
  - 27 **Yashima Y**, Sasahira N, Isayama H, Kogure H, Ikeda H, Hirano K, Mizuno S, Yagioka H, Kawakubo K, Sasaki T, Nakai Y, Tada M, Yoshida H, Omata M, Koike K. Acoustic radiation force impulse elastography for noninvasive assessment of chronic pancreatitis. *J Gastroenterol* 2012; **47**: 427-432 [PMID: [22065162](https://pubmed.ncbi.nlm.nih.gov/22065162/) DOI: [10.1007/s00535-011-0491-x](https://doi.org/10.1007/s00535-011-0491-x)]
  - 28 **Iglesias-Garcia J**, Domínguez-Muñoz JE, Castiñeira-Alvaríño M, Luaces-Regueira M, Lariño-Noia J. Quantitative elastography associated with endoscopic ultrasound for the diagnosis of chronic pancreatitis. *Endoscopy* 2013; **45**: 781-788 [PMID: [24019131](https://pubmed.ncbi.nlm.nih.gov/24019131/) DOI: [10.1055/s-0033-1344614](https://doi.org/10.1055/s-0033-1344614)]
  - 29 **Harada N**, Ishizawa T, Inoue Y, Aoki T, Sakamoto Y, Hasegawa K, Sugawara Y, Tanaka M, Fukayama M, Kokudo N. Acoustic radiation force impulse imaging of the pancreas for estimation of pathologic fibrosis and risk of postoperative pancreatic fistula. *J Am Coll Surg* 2014; **219**: 887-94.e5 [PMID: [25262282](https://pubmed.ncbi.nlm.nih.gov/25262282/) DOI: [10.1016/j.jamcollsurg.2014.07.940](https://doi.org/10.1016/j.jamcollsurg.2014.07.940)]
  - 30 **Llamoza-Torres CJ**, Fuentes-Pardo M, Álvarez-Higuera FJ, Alberca-de-Las-Parras F, Carballo-Álvarez F. Usefulness of percutaneous elastography by acoustic radiation force impulse for the non-invasive diagnosis of chronic pancreatitis. *Rev Esp Enferm Dig* 2016; **108**: 450-456 [PMID: [27459032](https://pubmed.ncbi.nlm.nih.gov/27459032/) DOI: [10.17235/reed.2016.4103/2015](https://doi.org/10.17235/reed.2016.4103/2015)]
  - 31 **Yardimci S**, Kara YB, Tuney D, Attaallah W, Ugurlu MU, Dulundu E, Yegen ŞC. A Simple Method to Evaluate Whether Pancreas Texture Can Be Used to Predict Pancreatic Fistula Risk After Pancreatoduodenectomy. *J Gastrointest Surg* 2015; **19**: 1625-1631 [PMID: [25982120](https://pubmed.ncbi.nlm.nih.gov/25982120/) DOI: [10.1007/s11605-015-2855-7](https://doi.org/10.1007/s11605-015-2855-7)]
  - 32 **Gnanasekaran S**, Durgesh S, Gurram R, Kalayarasan R, Pottakkat B, Rajeswari M, Srinivas BH, Ramesh A, Sahoo J. Do preoperative pancreatic computed tomography attenuation index and enhancement ratio predict pancreatic fistula after pancreaticoduodenectomy? *World J Radiol* 2022; **14**: 165-176 [PMID: [35978980](https://pubmed.ncbi.nlm.nih.gov/35978980/) DOI: [10.4329/wjr.v14.i6.165](https://doi.org/10.4329/wjr.v14.i6.165)]
  - 33 **Takahashi N**, Fletcher JG, Hough DM, Fidler JL, Kawashima A, Mandrekar JN, Chari ST. Autoimmune pancreatitis: differentiation from pancreatic carcinoma and normal pancreas on the basis of enhancement characteristics at dual-phase CT. *AJR Am J Roentgenol* 2009; **193**: 479-484 [PMID: [19620446](https://pubmed.ncbi.nlm.nih.gov/19620446/) DOI: [10.2214/AJR.08.1883](https://doi.org/10.2214/AJR.08.1883)]
  - 34 **Winston CB**, Mitchell DG, Outwater EK, Ehrlich SM. Pancreatic signal intensity on T1-weighted fat saturation MR images: clinical correlation. *J Magn Reson Imaging* 1995; **5**: 267-271 [PMID: [7633102](https://pubmed.ncbi.nlm.nih.gov/7633102/) DOI: [10.1002/jmri.1880050307](https://doi.org/10.1002/jmri.1880050307)]
  - 35 **Noda Y**, Goshima S, Tanaka K, Osada S, Tomita H, Hara A, Horikawa Y, Takeda J, Kajita K, Watanabe H, Kawada H, Kawai N, Kanematsu M, Bae KT. Findings in pancreatic MRI associated with pancreatic fibrosis and HbA1c values. *J Magn Reson Imaging* 2016; **43**: 680-687 [PMID: [26201823](https://pubmed.ncbi.nlm.nih.gov/26201823/) DOI: [10.1002/jmri.25019](https://doi.org/10.1002/jmri.25019)]
  - 36 **Watanabe H**, Kanematsu M, Tanaka K, Osada S, Tomita H, Hara A, Goshima S, Kondo H, Kawada H, Noda Y, Tanahashi Y, Kawai N, Yoshida K, Moriyama N. Fibrosis and postoperative fistula of the pancreas: correlation with MR imaging findings--preliminary results. *Radiology* 2014; **270**: 791-799 [PMID: [24475834](https://pubmed.ncbi.nlm.nih.gov/24475834/) DOI: [10.1148/radiol.13131194](https://doi.org/10.1148/radiol.13131194)]
  - 37 **Yoon JH**, Lee JM, Lee KB, Kim SW, Kang MJ, Jang JY, Kannengiesser S, Han JK, Choi BI. Pancreatic Steatosis and Fibrosis: Quantitative Assessment with Preoperative Multiparametric MR Imaging. *Radiology* 2016; **279**: 140-150 [PMID: [26566228](https://pubmed.ncbi.nlm.nih.gov/26566228/) DOI: [10.1148/radiol.2015142254](https://doi.org/10.1148/radiol.2015142254)]
  - 38 **Fukada M**, Murase K, Higashi T, Fujibayashi S, Kuno M, Yasufuku I, Sato Y, Kiyama S, Tanaka Y, Okumura N, Matsushashi N, Takahashi T. The pancreas-to-muscle signal intensity ratio on T(1)-weighted MRI as a predictive biomarker for postoperative pancreatic fistula after distal pancreatectomy: a single-center retrospective study. *World J Surg Oncol* 2022; **20**: 250 [PMID: [35932021](https://pubmed.ncbi.nlm.nih.gov/35932021/) DOI: [10.1186/s12957-022-02718-8](https://doi.org/10.1186/s12957-022-02718-8)]
  - 39 **Nissan N**. Modifications of pancreatic diffusion MRI by tissue characteristics: what are we weighting for? *NMR Biomed* 2017; **30** [PMID: [28470823](https://pubmed.ncbi.nlm.nih.gov/28470823/) DOI: [10.1002/nbm.3728](https://doi.org/10.1002/nbm.3728)]
  - 40 **Bieluniene E**, Frøkjær JB, Pockevicius A, Kemesiene J, Lukosevicius S, Basevicius A, Barauskas G, Dambrasukas Z, Gulbinas A. Magnetic Resonance Imaging as a Valid Noninvasive Tool for the Assessment of Pancreatic Fibrosis. *Pancreas* 2019; **48**: 85-93 [PMID: [30451794](https://pubmed.ncbi.nlm.nih.gov/30451794/) DOI: [10.1097/MPA.0000000000001206](https://doi.org/10.1097/MPA.0000000000001206)]
  - 41 **Tirkes T**, Yadav D, Conwell DL, Territo PR, Zhao X, Persohn SA, Dasyam AK, Shah ZK, Venkatesh SK, Takahashi N, Wachsmann A, Li L, Li Y, Pandol SJ, Park WG, Vege SS, Hart PA, Topazian M, Andersen DK, Fogel EL; Consortium for the Study of Chronic Pancreatitis, Diabetes, Pancreatic Cancer (CPDPC). Quantitative MRI of chronic pancreatitis: results from a multi-institutional prospective study, magnetic resonance imaging as a non-invasive method for assessment of pancreatic fibrosis (MINIMAP). *Abdom Radiol (NY)* 2022; **47**: 3792-3805 [PMID: [36038644](https://pubmed.ncbi.nlm.nih.gov/36038644/) DOI: [10.1007/s00261-022-03654-7](https://doi.org/10.1007/s00261-022-03654-7)]
  - 42 **An H**, Shi Y, Guo Q, Liu Y. Test-retest reliability of 3D EPI MR elastography of the pancreas. *Clin Radiol* 2016; **71**: 1068.e7-1068.e12 [PMID: [27132114](https://pubmed.ncbi.nlm.nih.gov/27132114/) DOI: [10.1016/j.crad.2016.03.014](https://doi.org/10.1016/j.crad.2016.03.014)]
  - 43 **Wang M**, Gao F, Wang X, Liu Y, Ji R, Cang L, Shi Y. Magnetic resonance elastography and T(1) mapping for early diagnosis and classification of chronic pancreatitis. *J Magn Reson Imaging* 2018 [PMID: [29537715](https://pubmed.ncbi.nlm.nih.gov/29537715/) DOI: [10.1002/jmri.26008](https://doi.org/10.1002/jmri.26008)]
  - 44 **Machado MC**, Coelho AM, Carneiro D'Albuquerque LA, Jancar S. Effect of ageing on systemic inflammatory response in acute pancreatitis. *Int J Inflam* 2012; **2012**: 270319 [PMID: [22292125](https://pubmed.ncbi.nlm.nih.gov/22292125/) DOI: [10.1155/2012/270319](https://doi.org/10.1155/2012/270319)]
  - 45 **Itoh Y**, Itoh A, Kawashima H, Ohno E, Nakamura Y, Hiramatsu T, Sugimoto H, Sumi H, Hayashi D, Kuwahara T, Morishima T, Funasaka K, Nakamura M, Miyahara R, Ohmiya N, Katano Y, Ishigami M, Goto H, Hirooka Y. Quantitative analysis of diagnosing pancreatic fibrosis using EUS-elastography (comparison with surgical specimens). *J*

- Gastroenterol* 2014; **49**: 1183-1192 [PMID: [24026103](#) DOI: [10.1007/s00535-013-0880-4](#)]
- 46 **Dominguez-Muñoz JE**, Iglesias-García J, Castiñeira Alvariño M, Luaces Regueira M, Lariño-Noia J. EUS elastography to predict pancreatic exocrine insufficiency in patients with chronic pancreatitis. *Gastrointest Endosc* 2015; **81**: 136-142 [PMID: [25088920](#) DOI: [10.1016/j.gie.2014.06.040](#)]
- 47 **Kim SY**, Cho JH, Kim YJ, Kim EJ, Park JY, Jeon TJ, Kim YS. Diagnostic efficacy of quantitative endoscopic ultrasound elastography for differentiating pancreatic disease. *J Gastroenterol Hepatol* 2017; **32**: 1115-1122 [PMID: [27862278](#) DOI: [10.1111/jgh.13649](#)]
- 48 **Kuwahara T**, Hirooka Y, Kawashima H, Ohno E, Ishikawa T, Kawai M, Suhara H, Takeyama T, Hashizume K, Koya T, Tanaka H, Sakai D, Yamamura T, Furukawa K, Funasaka K, Nakamura M, Miyahara R, Watanabe O, Ishigami M, Hashimoto S, Goto H. Quantitative diagnosis of chronic pancreatitis using EUS elastography. *J Gastroenterol* 2017; **52**: 868-874 [PMID: [27995327](#) DOI: [10.1007/s00535-016-1296-8](#)]
- 49 **Yamashita Y**, Tanioka K, Kawaji Y, Tamura T, Nuta J, Hatamaru K, Itonaga M, Yoshida T, Ida Y, Maekita T, Iguchi M, Kitano M. Utility of Elastography with Endoscopic Ultrasonography Shear-Wave Measurement for Diagnosing Chronic Pancreatitis. *Gut Liver* 2020; **14**: 659-664 [PMID: [31722469](#) DOI: [10.5009/gnl19170](#)]
- 50 **Yamashita Y**, Tanioka K, Kawaji Y, Tamura T, Nuta J, Hatamaru K, Itonaga M, Ida Y, Maekita T, Iguchi M, Kitano M. Endoscopic ultrasonography shear wave as a predictive factor of endocrine/exocrine dysfunction in chronic pancreatitis. *J Gastroenterol Hepatol* 2021; **36**: 391-396 [PMID: [32511808](#) DOI: [10.1111/jgh.15137](#)]
- 51 **Kim BR**, Kim JH, Ahn SJ, Joo I, Choi SY, Park SJ, Han JK. CT prediction of resectability and prognosis in patients with pancreatic ductal adenocarcinoma after neoadjuvant treatment using image findings and texture analysis. *Eur Radiol* 2019; **29**: 362-372 [PMID: [29931561](#) DOI: [10.1007/s00330-018-5574-0](#)]
- 52 **Borhani AA**, Dewan R, Furlan A, Seiser N, Zureikat AH, Singhi AD, Boone B, Bahary N, Hogg ME, Lotze M, Zeh HJ III, Tublin ME. Assessment of Response to Neoadjuvant Therapy Using CT Texture Analysis in Patients With Resectable and Borderline Resectable Pancreatic Ductal Adenocarcinoma. *AJR Am J Roentgenol* 2020; **214**: 362-369 [PMID: [31799875](#) DOI: [10.2214/AJR.19.21152](#)]



Published by **Baishideng Publishing Group Inc**  
7041 Koll Center Parkway, Suite 160, Pleasanton, CA 94566, USA

**Telephone:** +1-925-3991568

**E-mail:** [bpgoffice@wjgnet.com](mailto:bpgoffice@wjgnet.com)

**Help Desk:** <https://www.f6publishing.com/helpdesk>

<https://www.wjgnet.com>

