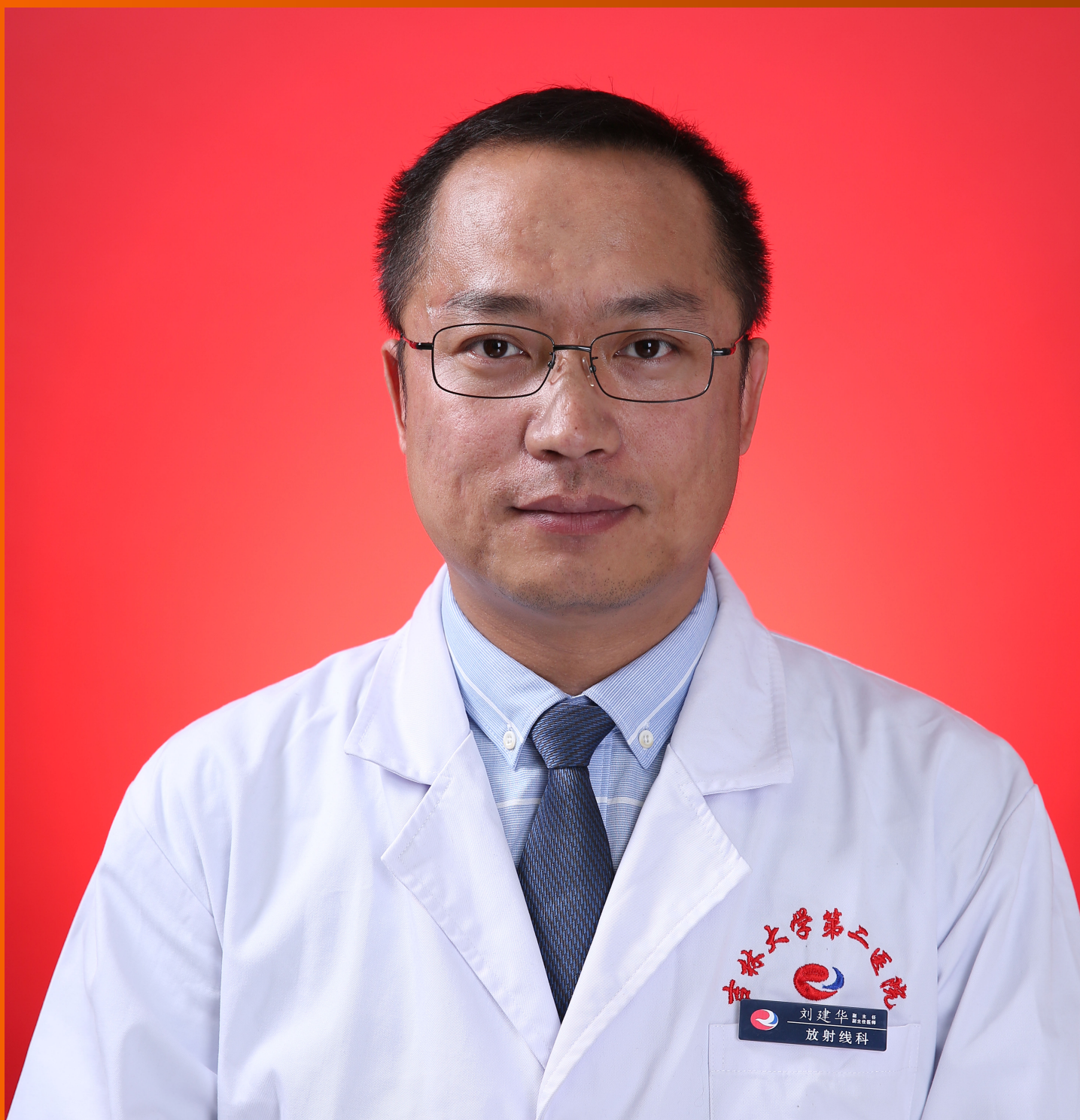


World Journal of *Cardiology*

World J Cardiol 2020 September 26; 12(9): 437-474



REVIEW

- 437 Dispersion of ventricular repolarization: Temporal and spatial
Arteyeva NV

ORIGINAL ARTICLE**Retrospective Cohort Study**

- 450 Clinical significance of prolonged chest pain in vasospastic angina
Teragawa H, Oshita C, Orita Y

CASE REPORT

- 460 Pericardial effusion with tamponade – an uncommon presentation leading to the diagnosis of eosinophilic granulomatosis polyangiitis: A case report
Alam L, Lasam G, Fishberg R
- 468 Diffuse coronary artery vasospasm in a patient with subarachnoid hemorrhage: A case report
Grewal D, Mohammad A, Swamy P, Abudayyeh I, Mamas MA, Parwani P

ABOUT COVER

Editorial board member of *World Journal of Cardiology*, Dr. Jian-Hua Liu obtained his Bachelor of Medicine and Bachelor of Surgery from Beihua University (Jilin, China). He carried out his resident training at the Second Hospital of Jilin University and obtained a Master of Science in Medical Imaging from Kunming Medical University and a PhD from Chemistry College of Jilin University. Dr. Liu then worked as a visiting scholar at Ulm University in Germany before returning to the Second Hospital of Jilin University to serve as Chief Physician and Vice Director of the Department of Radiology, positions he holds currently. His ongoing research interests involve the application of clinical and molecular imaging in cardiovascular diseases, which have led to authorship of more than 60 scientific papers in the medicinal field (H-index = 27). (L-Editor: Filipodia)

AIMS AND SCOPE

The primary aim of *World Journal of Cardiology* (*WJC*, *World J Cardiol*) is to provide scholars and readers from various fields of cardiology with a platform to publish high-quality basic and clinical research articles and communicate their research findings online.

WJC mainly publishes articles reporting research results and findings obtained in the field of cardiology and covering a wide range of topics including acute coronary syndromes, aneurysm, angina, arrhythmias, atherosclerosis, atrial fibrillation, cardiomyopathy, congenital heart disease, coronary artery disease, heart failure, hypertension, imaging, infection, myocardial infarction, pathology, peripheral vessels, public health, Raynaud's syndrome, stroke, thrombosis, and valvular disease.

INDEXING/ABSTRACTING

The *WJC* is now abstracted and indexed in Emerging Sources Citation Index (Web of Science), PubMed, PubMed Central, Scopus, China National Knowledge Infrastructure (CNKI), China Science and Technology Journal Database (CSTJ), and Superstar Journals Database.

RESPONSIBLE EDITORS FOR THIS ISSUE

Production Editor: Jia-Hui Li; Production Department Director: Xiang Li; Editorial Office Director: Jia-Ping Yan.

NAME OF JOURNAL

World Journal of Cardiology

ISSN

ISSN 1949-8462 (online)

LAUNCH DATE

December 31, 2009

FREQUENCY

Monthly

EDITORS-IN-CHIEF

Ramdas G Pai, Dimitrios Tousoulis, Marco Matteo Ciccone

EDITORIAL BOARD MEMBERS

<https://www.wjnet.com/1949-8462/editorialboard.htm>

PUBLICATION DATE

September 26, 2020

COPYRIGHT

© 2020 Baishideng Publishing Group Inc

INSTRUCTIONS TO AUTHORS

<https://www.wjnet.com/bpg/gerinfo/204>

GUIDELINES FOR ETHICS DOCUMENTS

<https://www.wjnet.com/bpg/GerInfo/287>

GUIDELINES FOR NON-NATIVE SPEAKERS OF ENGLISH

<https://www.wjnet.com/bpg/gerinfo/240>

PUBLICATION ETHICS

<https://www.wjnet.com/bpg/GerInfo/288>

PUBLICATION MISCONDUCT

<https://www.wjnet.com/bpg/gerinfo/208>

ARTICLE PROCESSING CHARGE

<https://www.wjnet.com/bpg/gerinfo/242>

STEPS FOR SUBMITTING MANUSCRIPTS

<https://www.wjnet.com/bpg/GerInfo/239>

ONLINE SUBMISSION

<https://www.f6publishing.com>

Pericardial effusion with tamponade – an uncommon presentation leading to the diagnosis of eosinophilic granulomatosis polyangiitis: A case report

Loba Alam, Glenmore Lasam, Robert Fishberg

ORCID number: Loba Alam [0000-0002-6605-9297](https://orcid.org/0000-0002-6605-9297); Glenmore Lasam [0000-0002-7066-3374](https://orcid.org/0000-0002-7066-3374); Robert Fishberg [0000-0002-6605-9297](https://orcid.org/0000-0002-6605-9297).

Author contributions: Alam L and Lasam G contributed to conception and design of the study, and acquisition of the data; Fishberg R was involved in analysis and interpretation of data and contributed to drafting and revising the article.

Informed consent statement:

Informed written consent was obtained from the patient for publication of this report and any accompanying images.

Conflict-of-interest statement: The authors declare that they have no conflict of interest.

CARE Checklist (2016) statement:

The authors have read the CARE Checklist (2016), and the manuscript was prepared and revised according to the CARE Checklist (2016).

Open-Access: This article is an open-access article that was selected by an in-house editor and fully peer-reviewed by external reviewers. It is distributed in accordance with the Creative Commons Attribution

Loba Alam, Department of Medicine, Atlantic Health System-Overlook Medical Center, Summit, NJ 07901, United States

Glenmore Lasam, Department of Cardiology, Icahn School of Medicine, Mount Sinai Heart at Mount Sinai Morningside, New York, NY 10025, United States

Robert Fishberg, Department of Cardiology, Atlantic Health System Overlook, Summit, NJ 07901, United States

Corresponding author: Loba Alam, MD, Doctor, Department of Medicine, Atlantic Health System-Overlook Medical Center, 99 Beauvoir Avenue, Summit, NJ 07901, United States. alamloba@gmail.com

Abstract

BACKGROUND

Eosinophilic granulomatosis polyangiitis (EGPA) is a small vessel necrotizing vasculitis that commonly presents as peripheral eosinophilia and asthma; however, it can rarely manifest with cardiac involvement such as pericarditis and cardiac tamponade. Isolated pericardial tamponade presenting as the initial symptom of EGPA is exceedingly rare. Early diagnosis and appropriate treatment are crucial to prevent life-threatening outcomes.

CASE SUMMARY

52-year-old woman with no past medical history presented with progressive dyspnea and dry cough. On physical exam she had a pericardial friction rub and bilateral rales. Vital signs were notable for tachycardia at 119 beats per minute and hypoxia with 89% oxygen saturation. On laboratory exam, she had 45% peripheral eosinophilia, troponin elevation of 1.1 ng/mL and N-terminal prohormone of brain natriuretic peptide of 2101 pg/mL. TTE confirmed a large pericardial effusion and tamponade physiology. She underwent urgent pericardial window procedure. Pericardial and lung biopsy demonstrated eosinophilic infiltration. Based on the American College of Radiology guidelines, the patient was diagnosed with EGPA which manifested in its rare form of cardiac tamponade. She was treated with steroid taper and mepolizumab.

CONCLUSION

This case highlights that when isolated pericardial involvement occurs in EGPA,

NonCommercial (CC BY-NC 4.0) license, which permits others to distribute, remix, adapt, build upon this work non-commercially, and license their derivative works on different terms, provided the original work is properly cited and the use is non-commercial. See: <http://creativecommons.org/licenses/by-nc/4.0/>

Manuscript source: Unsolicited manuscript

Received: June 6, 2020

Peer-review started: July 2, 2020

First decision: June 20, 2020

Revised: July 2, 2020

Accepted: September 1, 2020

Article in press: September 1, 2020

Published online: September 26, 2020

P-Reviewer: Hamaoka T

S-Editor: Zhang H

L-Editor: A

P-Editor: Li JH



diagnosis is recognized by performing pericardial biopsy demonstrating histopathologic evidence of eosinophilic infiltration.

Key Words: Eosinophilic granulomatosis polyangiitis; Cardiac tamponade; Pericardial effusion; Mepolizumab; Peripheral eosinophilia; Pericardial biopsy; Case report

©The Author(s) 2020. Published by Baishideng Publishing Group Inc. All rights reserved.

Core Tip: (1) To be able to investigate the etiology of pericardial effusion and cardiac tamponade with eosinophilia which is rarely caused by eosinophilic granulomatosis polyangiitis (EGPA); (2) To be mindful that anti-neutrophil cytoplasmic antibody is negative in EGPA with cardiac involvement rather than pulmonary or renal involvement; (3) To be aware that when isolated pericardial involvement leading to cardiac tamponade occurs, diagnosis is recognized by performing pericardial biopsy demonstrating histopathologic evidence of eosinophilic infiltration; (4) To consider early diagnosis of EGPA with cardiac involvement is crucial because it carries a major burden of morbidity and mortality; (5) To initiate early treatment with corticosteroids when an isolated pericardial involvement is present whereas immunosuppressants are utilized with multiorgan involvement; and (6) To conduct close surveillance in the outpatient setting to monitor the response to treatment and maintenance medications such as steroids and monoclonal antibodies.

Citation: Alam L, Lasam G, Fishberg R. Pericardial effusion with tamponade – an uncommon presentation leading to the diagnosis of eosinophilic granulomatosis polyangiitis: A case report. *World J Cardiol* 2020; 12(9): 460-467

URL: <https://www.wjgnet.com/1949-8462/full/v12/i9/460.htm>

DOI: <https://dx.doi.org/10.4330/wjc.v12.i9.460>

INTRODUCTION

Eosinophilic granulomatosis polyangiitis (EGPA) is a systemic necrotizing vasculitis with eosinophilic infiltrates of the small to medium vessels and extravascular granulomas, first described by Dr. Jacob Churg and Dr. Lotte Strauss in 1951^[1]. EGPA is commonly revealed by late onset asthma and peripheral eosinophilia, however it can rarely present as isolated cardiac tamponade. Owing to the high mortality rate of EGPA presenting as isolated cardiac tamponade, rapid diagnosis and early treatment is critical and lifesaving. Other more common cardiac manifestation of EGPA includes pericarditis, myocarditis, valvulopathies, cardiomyopathy and coronary artery vasculitis.

CASE PRESENTATION

Chief complaints

52-year-old female presented to the hospital with chief complaints of progressive shortness of breath, orthopnea, chest pain, and dry cough.

History of present illness

The symptoms started one month ago and progressively worsened which prompted her to visit the hospital.

History of past illness

She had no significant prior personal or family history.

Physical examination

Vital signs were notable for blood pressure of 124/79 mmHg, sinus tachycardia with heart rate of 119 beats per minute, hypoxia with oxygen saturation of 89%, respiratory rate of 16 breaths per minute and afebrile temperature. On physical examination, she demonstrated sinus tachycardia, a pericardial friction rub, and rales in her bilateral

lower lung fields. She did not demonstrate pulsus paradoxus. Review of system was notable for numbness and tingling of the right hand for the past month.

Laboratory examinations

Initial laboratory findings were notable normal white blood cell count of 11/nL, however with 45% peripheral eosinophilia. Troponin was mildly elevated at 1.1 ng/mL and N-terminal prohormone of brain natriuretic peptide (NT ProBNP) was elevated at 2101 pg/mL. D-Dimer was elevated at 3.66 µg/mL. Electrocardiogram revealed low voltage QRS complex with small ST-T wave changes (Figure 1). A chest radiograph showed cardiomegaly and bilateral opacities (Figure 2). At this stage, given the initial diagnostic information, differentials included congestive heart failure, pulmonary embolism, and/or eosinophilic pneumonia.

Imaging examinations

Computed tomography angiogram revealed a large pericardial effusion, moderate right and small left pleural effusions, and bilateral pulmonary infiltrates (Figure 3). This was followed with a transthoracic echocardiogram which demonstrated normal left ventricular cavity size, wall thickness and systolic function with estimated ejection fraction greater than 55%. No regional wall motion abnormalities were detected. Aortic and mitral valves were normal. There was trace tricuspid regurgitation. The right atrium was normal in size. The right ventricle collapsed in diastole. There was a large pericardial effusion (Figure 4). The diastolic compression of the right ventricle was suggestive of tamponade physiology.

FINAL DIAGNOSIS

Based on the American College of Radiology (ACR) guidelines, the patient was diagnosed with EGPA which manifested in its rare form of cardiac tamponade.

TREATMENT

Cardiothoracic surgery was consulted, and she was taken to the operating room for right video-assisted thoracoscopic surgery pericardial window, right lower lobe lung wedge resection, and drainage of pericardial effusion. Pericardial fluid studies were notable for a cloudy, exudative effusion with white blood cell count of 3092 µL and 25% eosinophilia. Pericardial fluid cytology was negative for malignancy. Aerobic, anaerobic, and fungal cultures were negative for any growth. Pericardial biopsy demonstrated eosinophilic pericarditis (Figure 5). Lung tissue pathology demonstrated findings consistent with eosinophilic pneumonia *vs* EGPA (Figure 6).

Following the drainage of pericardial fluid, the patient demonstrated relief of her presenting symptoms. She denied any chest pain or shortness of breath. Repeat troponin levels were within normal limits. Other laboratory workup including respiratory viral panel, blood cultures, rheumatologic marker including antinuclear antibody, rheumatoid factor and anti-neutrophil cytoplasmic antibody (ANCA) were negative. Hypersensitivity pneumonitis panel was also negative. Repeat echocardiogram the following day showed normal biventricular function, valvular function, and wall motion. It did not demonstrate accumulation of new pericardial effusion. As such coronary catheterization was deferred.

The patient was started on oral prednisone 40 mg daily. A month later, mepolizumab was added to her treatment course and prednisone was concurrently tapered down. Eventually, she has been maintained on oral prednisone 7.5 mg daily as well as mepolizumab monthly with no recurrence of her symptoms.

OUTCOME AND FOLLOW-UP

At one-month interval, transthoracic echocardiogram, CT chest with contrast, and cardiac magnetic resonance imaging (MRI) with and without contrast were performed to monitor disease progression. Echocardiogram showed resolution of pericardial effusion and normal biventricular function. CT chest showed resolution of bilateral infiltrates. Cardiac MRI with and without contrast showed normal biventricular volume and systolic function. There were no areas of focal hyperenhancement,

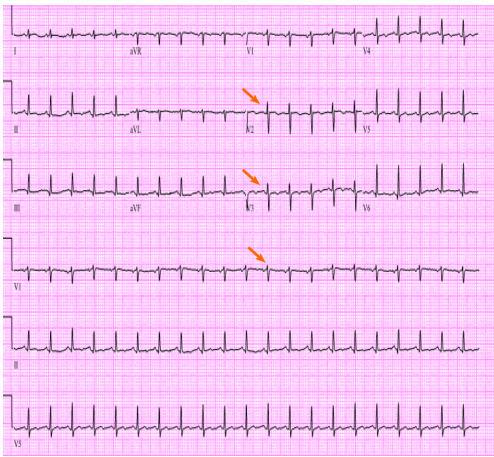


Figure 1 Electrocardiogram showed sinus tachycardia, low voltage QRS (arrows) with small ST-T wave changes.

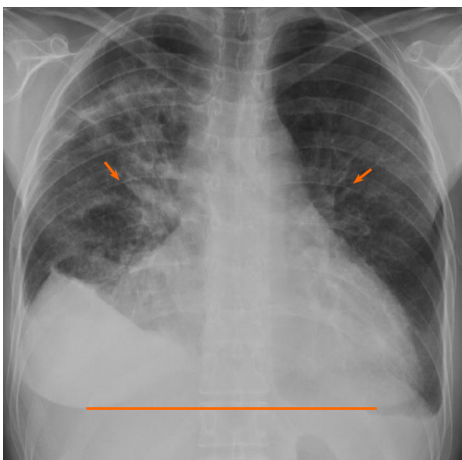


Figure 2 Chest radiograph revealed cardiomegaly (line) and bilateral opacities (arrows).

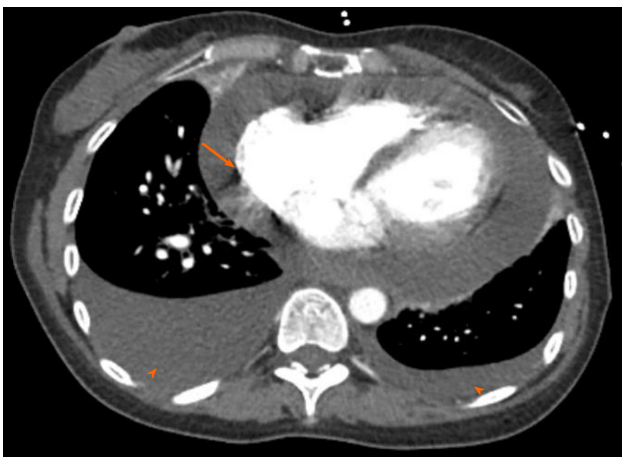


Figure 3 Chest computed tomography angiogram revealed a large pericardial effusion (arrow); moderate right and small left pleural effusion (arrowhead).

consistent with the absence of myocardial scarring or fibrosis. A post gadolinium LAVA sequence was acquired which demonstrated normal measurements of biventricular dimensions, volume and ejection fraction. At follow up office visits, she had no recurrence of cardiopulmonary symptoms, her mononeuritis had resolved, there was no evidence of eosinophilia on hemogram, and she tolerated the medication

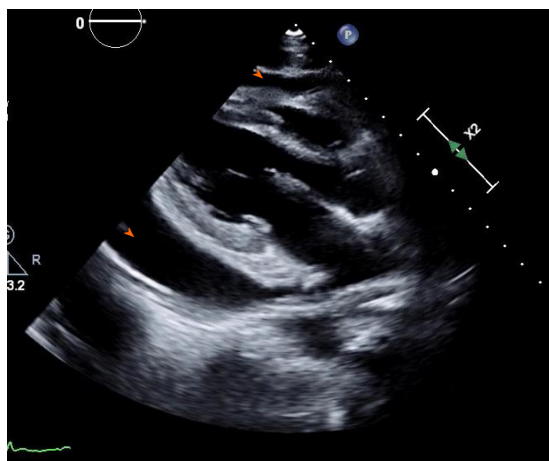


Figure 4 Transthoracic echocardiogram showed large pericardial effusion (arrowhead).

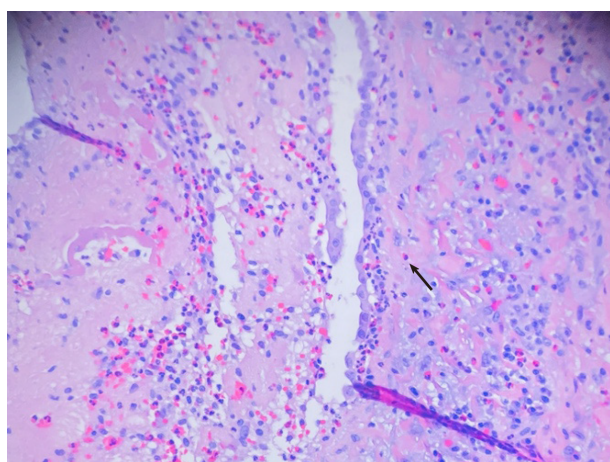


Figure 5 Cardiac biopsy revealed pericardial thickening with eosinophil predominant infiltrate (arrow).

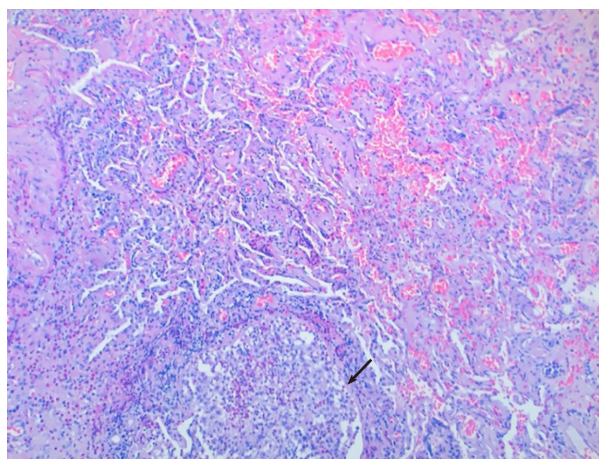


Figure 6 Lung biopsy revealed organizing inflammatory infiltrate, micro abscess (arrow), and eosinophil infiltrate.

well.

DISCUSSION

EGPA is a rare systemic disease characterized by asthma, peripheral and tissue eosinophilia and systemic vasculitis. It is reported to have an annual incidence of 1.0 – 4.2 cases per million^[2]. Cardiac involvement commonly includes eosinophilic endomyocarditis, coronary vasculitis, arrhythmia, cardiomyopathy and pericarditis with small pericardial effusions^[3]. EGPA presenting as cardiac tamponade is exceedingly rare^[3,4]. When cardiac involvement is present, rapid diagnosis is necessary because it is an important predictor of morbidity and mortality.

According to the ACR, the diagnostic criteria for EGPA includes: (1) Asthma; (2) Eosinophilia > 10%; (3) Neuropathy; (4) Non-fixed pulmonary infiltrates; (5) Paranasal sinus abnormality; and (6) Extravascular eosinophils^[5]. The ACR determined that having at least four of the six criteria yields a sensitivity of 85% and a specificity of 99.7% for EGPA^[5]. Our patient met four of the six criteria for the diagnosis of EGPA including: peripheral eosinophilia of 45%, mononeuropathy of right hand, bilateral pulmonary infiltrates on CT angiogram and pericardial/Lung tissue biopsy with extravascular eosinophilia.

The French vasculitis study group demonstrated that EGPA constitutes of two separate clinical patterns which can be distinguished by the ANCA status; patients with cardiac eosinophilic tissue infiltration are usually ANCA negative, whereas patients with pulmonary and renal involvement are ANCA positive^[6,7].

In a literature search on PubMed between January 1960 – March 2020 we found 14 cases of EGPA manifesting as cardiac tamponade (Table 1). Of the total 14 cases reviewed (including ours), age range included 12-73, with 50% male and 50% female patients. Myocardial involvement was detected in five of the fourteen EGPA cases with cardiac tamponade. ANCA status was only positive in one case, thus it is unlikely for ANCA to be related to pericardial involvement leading to cardiac tamponade in EGPA. Cytology from aspirated pericardial fluid did not provide diagnostic value as their presence were variable in the reported cytology results. The diagnosis of seven of the EGPA cases with cardiac tamponade were made from pericardial biopsy.

EGPA manifesting as isolated pericarditis with pericardial effusion may present as mild symptoms of chest pain, cough, and dyspnea to life threatening conditions such as hemodynamic instability. Chest radiograph and electrocardiogram can show initial abnormalities, while urgent echocardiogram confirms the diagnosis of pericardial effusion and tamponade. In such scenarios, pericardiocentesis is performed, and pericardial fluid analysis demonstrates exudative effusion with marked eosinophilia. Histopathology from pericardial biopsy demonstrates vasculitis with eosinophilic infiltration. When patients with EGPA exhibits tamponade without involvement of other visceral organs, the diagnosis is difficult to make without pericardial biopsy. Cardiac MRI is an important noninvasive tool in demonstrating extent of cardiac involvement and following disease progression^[8].

The management and prognosis of EGPA depends on the number of organs involved and their severity. Isolated pericarditis can be treated with high dose steroids alone, whereas pericarditis with myocardial injury and other visceral organ involvement are treated with a combination of high dose steroids and immunosuppressive drugs^[3,4]. Biologics such as mepolizumab, a humanized monoclonal anti-interleukin (IL)-5 antibody has been shown to maintain higher proportion of study participants in remission, as well as reduce glucocorticoid use in patients with EGPA^[9,10]. IL-5 is a cytokine involved in eosinophil proliferation, maturation, and differentiation. IL-5 is found to be at increased levels in patients with EGPA^[10]. Mepolizumab binds to IL-5 and prevents interaction with its receptor on the eosinophil surface, thus providing consistent reduction of peripheral eosinophilia and clinical improvement in patients with eosinophilic disorders such as severe eosinophilic asthma and EGPA^[10].

CONCLUSION

In summary we have presented a patient with pericarditis leading to pericardial effusion and cardiac tamponade which lead to the diagnosis of EGPA. Pericardial fluid analysis revealed eosinophilic infiltrate and pericardial biopsy demonstrated eosinophilic tissue infiltration. Furthermore, cardiac MRI did not show any evidence of inflammation or scarring to indicate myocardial involvement. Thus, this is a rare case of EGPA presenting with isolated pericardial involvement which eventually lead to cardiac tamponade. The patient was initiated on high dose prednisone with good

Table 1 PubMed literature review of case reports of eosinophilic granulomatosis polyangiitis with cardiac tamponade

Patient	Age	Sex	Histological diagnosis	Other cardiac involvement	Other organ involvement	Eosinophil in pericardial fluids	Treatment	ANCA	Ref.
1	66	M	Pericardium	None	Lung	Numerous	Prednisolone	Negative	Agard <i>et al</i> ^[3]
2	73	F	Pericardium	Myocarditis	Nerve	N/A	Prednisolone, cyclophosphamide	Negative	Agard <i>et al</i> ^[3]
3	73	F	Skin	None	Skin, colon, nerve	Numerous	Prednisolone	Negative	Yano <i>et al</i> ^[4]
4	44	F	Skin	Myocarditis	Lung, skin	None	Prednisolone, azathioprine	N/A	Hasley <i>et al</i> ^[11]
5	30	M	Myocardium	Myocarditis	Nerve	Numerous	Prednisolone	Negative	Uren <i>et al</i> ^[12]
6	56	F	Pericardium	None	Skin	N/A	Prednisolone	N/A	Sharma <i>et al</i> ^[13]
7	12	M	Skin	Myocarditis	Lung, skin, nerve	N/A	Prednisolone	Positive	Wang <i>et al</i> ^[14]
8	50	F	Pericardium	None	Lung, eye	77% of white cells	Prednisolone	Negative	Keefe <i>et al</i> ^[15]
9	59	M	Skin	None	Skin, ear, nerve	0.4% of white cells	Prednisolone	Negative	Ovadia <i>et al</i> ^[16]
10	57	M	N/A	None	Eye, nerve	30% of white cells	Prednisolone	Negative	Suganuma <i>et al</i> ^[17]
11	31	F	Pericardium	None	Gall bladder	Numerous	Prednisolone	Negative	Lenders <i>et al</i> ^[18]
12	57	M	N/A	Myocarditis	N/A	Numerous	Prednisolone	N/A	Gerlach <i>et al</i> ^[19]
13	56	M	Pericardium	None	None	N/A	Prednisolone	Negative	David <i>et al</i> ^[20]
14		F	Pericardium, Lung	None	Lung, Nerve	25% of white cells	Prednisone, mepolizumab	Negative	Our Case

ANCA: Anti-neutrophil cytoplasmic antibody.

response over four weeks. Subsequently, the patient was started on a steroid taper and mepolizumab was added as an adjunct to reduce steroid requirement and maintain longer remission rates. On interval follow up the patient had excellent response, which indicates EGPA presenting as cardiac tamponade can be managed with mepolizumab as a steroid sparing agent.

REFERENCES

- 1 **Churg J**, Strauss L. Allergic granulomatosis, allergic angiitis, and periarteritis nodosa. *Am J Pathol* 1951; **27**: 277-301 [PMID: [14819261](#)]
- 2 **Watts RA**, Lane S, Scott DG. What is known about the epidemiology of the vasculitides? *Best Pract Res Clin Rheumatol* 2005; **19**: 191-207 [PMID: [15857791](#) DOI: [10.1016/j.berh.2004.11.006](#)]
- 3 **Agard C**, Rendu E, Leguern V, Ponge T, Masseau A, Barrier JH, Trochu JN, Hamidou MA, Guillemin L. Churg-Strauss syndrome revealed by granulomatous acute pericarditis: two case reports and a review of the literature. *Semin Arthritis Rheum* 2007; **36**: 386-391 [PMID: [17303217](#) DOI: [10.1016/j.semarthrit.2006.12.002](#)]
- 4 **Yano T**, Ishimura S, Furukawa T, Koyama M, Tanaka M, Shimoshige S, Hashimoto A, Miura T. Cardiac tamponade leading to the diagnosis of eosinophilic granulomatosis with polyangiitis (Churg-Strauss syndrome): a case report and review of the literature. *Heart Vessels* 2015; **30**: 841-844 [PMID: [25070496](#) DOI: [10.1007/s00380-014-0556-x](#)]
- 5 **Masi AT**, Hunder GG, Lie JT, Michel BA, Bloch DA, Arend WP, Calabrese LH, Edworthy SM, Fauci AS, Leavitt RY. The American College of Rheumatology 1990 criteria for the classification of Churg-Strauss syndrome (allergic granulomatosis and angiitis). *Arthritis Rheum* 1990; **33**: 1094-1100 [PMID: [2202307](#) DOI: [10.1002/art.1780330806](#)]
- 6 **Sablé-Fourtassou R**, Cohen P, Mahr A, Pagnoux C, Mouthon L, Jayne D, Blockmans D, Cordier JF, Delaval P, Puechal X, Lauque D, Viallard JF, Zoulim A, Guillemin L; French Vasculitis Study Group. Antineutrophil cytoplasmic antibodies and the Churg-Strauss syndrome. *Ann Intern Med* 2005; **143**: 632-638 [PMID: [16263885](#) DOI: [10.7326/0003-4819-143-9-200511010-00006](#)]
- 7 **Comarmond C**, Pagnoux C, Khellaf M, Cordier JF, Hamidou M, Viallard JF, Maurier F, Jouneau S, Bienvu B, Puéchal X, Aumaitre O, Le Guenno G, Le Quellec A, Cevallos R, Fain O, Godeau B, Seror R, Dunogué B, Mahr A, Guilpain P, Cohen P, Aouba A, Mouthon L, Guillemin L; French Vasculitis Study

- Group. Eosinophilic granulomatosis with polyangiitis (Churg-Strauss): clinical characteristics and long-term followup of the 383 patients enrolled in the French Vasculitis Study Group cohort. *Arthritis Rheum* 2013; **65**: 270-281 [PMID: [23044708](#) DOI: [10.1002/art.37721](#)]
- 8 **Eyler AE**, Ahmad FA, Jahangir E. Magnetic resonance imaging of the cardiac manifestations of Churg-Strauss. *JRSM Open* 2014; **5**: 2054270414525370 [PMID: [25057389](#) DOI: [10.1177/2054270414525370](#)]
- 9 **Kim S**, Marigowda G, Oren E, Israel E, Wechsler ME. Mepolizumab as a steroid-sparing treatment option in patients with Churg-Strauss syndrome. *J Allergy Clin Immunol* 2010; **125**: 1336-1343 [PMID: [20513524](#) DOI: [10.1016/j.jaci.2010.03.028](#)]
- 10 **Wechsler ME**, Akuthota P, Jayne D, Khoury P, Klion A, Langford CA, Merkel PA, Moosig F, Specks U, Cid MC, Luqmani R, Brown J, Mallett S, Philipson R, Yancey SW, Steinfeld J, Weller PF, Gleich GJ; EGPA Mepolizumab Study Team. Mepolizumab or Placebo for Eosinophilic Granulomatosis with Polyangiitis. *N Engl J Med* 2017; **376**: 1921-1932 [PMID: [28514601](#) DOI: [10.1056/NEJMoa1702079](#)]
- 11 **Hasley PB**, Follansbee WP, Coulehan JL. Cardiac manifestations of Churg-Strauss syndrome: report of a case and review of the literature. *Am Heart J* 1990; **120**: 996-999 [PMID: [2220558](#) DOI: [10.1016/0002-8703\(90\)90227-o](#)]
- 12 **Uren NG**, Hammond PJ. Myopericarditis in Churg-Strauss syndrome. *Tex Heart Inst J* 1991; **18**: 127-131 [PMID: [15227496](#)]
- 13 **Sharma A**, De Varennes B, Sniderman AD. Churg-Strauss syndrome presenting with marked eosinophilia and pericardial effusion. *Can J Cardiol* 1993; **9**: 329-330 [PMID: [8513426](#)]
- 14 **Wang SJ**, Yang YH, Lin YT, Tsai MJ, Chiang BL. Childhood Churg-Strauss syndrome: report of a case. *J Microbiol Immunol Infect* 2000; **33**: 263-266 [PMID: [11269373](#)]
- 15 **Keefe AC**, Hymas JC, Emerson LL, Ryan JJ. An atypical presentation of cardiac tamponade and periorbital swelling in a patient with eosinophilic granulomatosis with polyangiitis: a case report. *J Med Case Rep* 2017; **11**: 271 [PMID: [28941467](#) DOI: [10.1186/s13256-017-1434-9](#)]
- 16 **Ovadia S**, Dror I, Zubkov T, Tanay A, Levy D, Zandman-Goddard G. Churg-Strauss syndrome: a rare presentation with otological and pericardial manifestations: case report and review of the literature. *Clin Rheumatol* 2009; **28** Suppl 1: S35-S38 [PMID: [19225706](#) DOI: [10.1007/s10067-009-1119-x](#)]
- 17 **Suganuma K**, Hashimoto T, Sato H, Suzuki T, Sakurai S. Oculomotor Nerve Palsy following Cardiac Tamponade with Churg-Strauss Syndrome: A Case Report. *Case Rep Neurol* 2011; **3**: 274-277 [PMID: [22125528](#) DOI: [10.1159/000334127](#)]
- 18 **Lenders G**, Goethals M, Verstreken S, Dierckx R, Vanderheyden M. Acalculous cholecystitis and tamponade: an unusual combination? *Acta Cardiol* 2011; **66**: 383-385 [PMID: [21744712](#) DOI: [10.1080/ac.66.3.2114142](#)]
- 19 **Gerlach RM**, Saha TK, Allard RV, Tanzola RC. Unrecognized tamponade diagnosed pre-induction by focused echocardiography. *Can J Anaesth* 2013; **60**: 803-807 [PMID: [23681721](#) DOI: [10.1007/s12630-013-9968-9](#)]
- 20 **David C**, Cazes A, Dossier A, Pasi N, Tadros VX, Papo T, Sacre K. A 56-Year-Old Man With Cardiac Tamponade and Eosinophilia. *Chest* 2018; **154**: e173-e176 [PMID: [30526985](#) DOI: [10.1016/j.chest.2018.06.031](#)]



Published by **Baishideng Publishing Group Inc**
7041 Koll Center Parkway, Suite 160, Pleasanton, CA 94566, USA

Telephone: +1-925-3991568

E-mail: bpgoffice@wjgnet.com

Help Desk: <https://www.f6publishing.com/helpdesk>

<https://www.wjgnet.com>

