

# World Journal of *Cardiology*

*World J Cardiol* 2021 May 26; 13(5): 117-154



**MINIREVIEWS**

- 117 Transcatheter pulmonic valve implantation: Techniques, current roles, and future implications  
*Law MA, Chatterjee A*

**ORIGINAL ARTICLE****Case Control Study**

- 130 Correlation between soluble receptor for advanced glycation end products levels and coronary artery disease in postmenopausal nondiabetic women  
*Ghosh S, Kapoor D, Vijayvergiya R, Sangwan S, Wangkheimayum S, Mehta S, Dhawan V*

**SYSTEMATIC REVIEWS**

- 144 Efficacy and safety of distal radial approach for cardiac catheterization: A systematic review and meta-analysis  
*Izumida T, Watanabe J, Yoshida R, Kotani K*

**ABOUT COVER**

Editorial Board Member of *World Journal of Cardiology*, Plinio Cirillo, MD, PhD, Associate Professor, Division of Cardiology, Department of Advanced Biomedical Sciences, University of Naples "Federico II", Naples 80131, Italy. pcirillo@unina.it

**AIMS AND SCOPE**

The primary aim of *World Journal of Cardiology* (WJC, *World J Cardiol*) is to provide scholars and readers from various fields of cardiology with a platform to publish high-quality basic and clinical research articles and communicate their research findings online.

WJC mainly publishes articles reporting research results and findings obtained in the field of cardiology and covering a wide range of topics including acute coronary syndromes, aneurysm, angina, arrhythmias, atherosclerosis, atrial fibrillation, cardiomyopathy, congenital heart disease, coronary artery disease, heart failure, hypertension, imaging, infection, myocardial infarction, pathology, peripheral vessels, public health, Raynaud's syndrome, stroke, thrombosis, and valvular disease.

**INDEXING/ABSTRACTING**

The WJC is now abstracted and indexed in Emerging Sources Citation Index (Web of Science), PubMed, PubMed Central, Scopus, China National Knowledge Infrastructure (CNKI), China Science and Technology Journal Database (CSTJ), and Superstar Journals Database.

**RESPONSIBLE EDITORS FOR THIS ISSUE**

**Production Editor:** Ying-Yi Yuan; **Production Department Director:** Xiang Li; **Editorial Office Director:** Ya-Juan Ma.

**NAME OF JOURNAL**

*World Journal of Cardiology*

**ISSN**

ISSN 1949-8462 (online)

**LAUNCH DATE**

December 31, 2009

**FREQUENCY**

Monthly

**EDITORS-IN-CHIEF**

Ramdas G Pai, Dimitrios Tousoulis, Marco Matteo Ciccone

**EDITORIAL BOARD MEMBERS**

<https://www.wjgnet.com/1949-8462/editorialboard.htm>

**PUBLICATION DATE**

May 26, 2021

**COPYRIGHT**

© 2021 Baishideng Publishing Group Inc

**INSTRUCTIONS TO AUTHORS**

<https://www.wjgnet.com/bpg/gerinfo/204>

**GUIDELINES FOR ETHICS DOCUMENTS**

<https://www.wjgnet.com/bpg/gerinfo/287>

**GUIDELINES FOR NON-NATIVE SPEAKERS OF ENGLISH**

<https://www.wjgnet.com/bpg/gerinfo/240>

**PUBLICATION ETHICS**

<https://www.wjgnet.com/bpg/gerinfo/288>

**PUBLICATION MISCONDUCT**

<https://www.wjgnet.com/bpg/gerinfo/208>

**ARTICLE PROCESSING CHARGE**

<https://www.wjgnet.com/bpg/gerinfo/242>

**STEPS FOR SUBMITTING MANUSCRIPTS**

<https://www.wjgnet.com/bpg/gerinfo/239>

**ONLINE SUBMISSION**

<https://www.f6publishing.com>



## Transcatheter pulmonic valve implantation: Techniques, current roles, and future implications

Mark Aaron Law, Arka Chatterjee

**ORCID number:** Mark Aaron Law 0000-0003-0690-9779; Arka Chatterjee 0000-0003-0532-308X.

**Author contributions:** Law MA and Chatterjee A both contributed to the overall conception of review, review of literature, drafting and final approval of manuscript

**Conflict-of-interest statement:** The authors have no conflicts to disclose.

**Open-Access:** This article is an open-access article that was selected by an in-house editor and fully peer-reviewed by external reviewers. It is distributed in accordance with the Creative Commons Attribution NonCommercial (CC BY-NC 4.0) license, which permits others to distribute, remix, adapt, build upon this work non-commercially, and license their derivative works on different terms, provided the original work is properly cited and the use is non-commercial. See: <http://creativecommons.org/licenses/by-nc/4.0/>

**Manuscript source:** Invited manuscript

**Specialty type:** Cardiac and cardiovascular systems

**Country/Territory of origin:** United States

**Mark Aaron Law**, Department of Pediatric Cardiology, Division of Cardiology, University of Alabama at Birmingham, Birmingham, AL 35233, United States

**Arka Chatterjee**, Division of Cardiology, University of Arizona College of Medicine, Tucson, AZ 85724, United States

**Corresponding author:** Mark Aaron Law, MD, Associate Professor, Department of Pediatric Cardiology, Division of Cardiology, University of Alabama at Birmingham, 1700 6<sup>th</sup> Ave S 176F Suite 9100, Birmingham, AL 35233, United States. [mlaw@peds.uab.edu](mailto:mlaw@peds.uab.edu)

### Abstract

Right ventricular outflow tract (RVOT) obstruction is present in a variety of congenital heart disease states including tetralogy of Fallot, pulmonary atresia/stenosis and other conotruncal abnormalities *etc.* After surgical repair, these patients develop RVOT residual abnormalities of pulmonic stenosis and/or insufficiency of their native outflow tract or right ventricle to pulmonary artery conduit. There are also sequelae of other surgeries like the Ross operation for aortic valve disease that lead to right ventricle to pulmonary artery conduit dysfunction. Surgical pulmonic valve replacement (SPVR) has been the mainstay for these patients and is considered standard of care. Transcatheter pulmonic valve implantation (TPVI) was first reported in 2000 and has made strides as a comparable alternative to SPVR, being approved in the United States in 2010. We provide a comprehensive review in this space—indications for TPVI, detailed procedural facets and up-to-date review of the literature regarding outcomes of TPVI. TPVI has been shown to have favorable medium-term outcomes free of re-interventions especially after the adoption of the practice of pre-stenting the RVOT. Procedural mortality and complications are uncommon. With more experience, recognition of risk of dreaded outcomes like coronary compression has improved. Also, conduit rupture is increasingly being managed with transcatheter tools. Questions over endocarditis risk still prevail in the TPVI population. Head-to-head comparisons to SPVR are still limited but available data suggests equivalence. We also discuss newer valve technologies that have limited data currently and may have more applicability for treatment of native dysfunctional RVOT substrates.

**Key Words:** Pulmonary valve; Congenital heart defects; Heart valve prosthesis implant; Pulmonary valve insufficiency; Pulmonary atresia; Pulmonary valve stenosis



**Peer-review report's scientific quality classification**

Grade A (Excellent): A  
 Grade B (Very good): 0  
 Grade C (Good): 0  
 Grade D (Fair): 0  
 Grade E (Poor): 0

**Received:** December 26, 2020

**Peer-review started:** December 28, 2020

**First decision:** February 28, 2021

**Revised:** March 11, 2021

**Accepted:** April 21, 2021

**Article in press:** April 21, 2021

**Published online:** May 26, 2021

**P-Reviewer:** Kim GB

**S-Editor:** Fan JR

**L-Editor:** A

**P-Editor:** Yuan YY



©The Author(s) 2021. Published by Baishideng Publishing Group Inc. All rights reserved.

**Core Tip:** As patients with congenital heart defects continue to survive well into adult life, right ventricular function preservation and management of the right ventricular outflow tract has become increasingly important and sophisticated. As an alternative to surgical pulmonary valve replacement (PVR), the advent of transcatheter pulmonic valve therapy has offered a less invasive approach for many patients. Improved techniques and technologies have rapidly expanded its use in increasingly complex anatomy. In this review we summarize the indications for PVR, transcatheter pulmonic valve implantation techniques, clinical outcomes and also future directions of this treatment.

**Citation:** Law MA, Chatterjee A. Transcatheter pulmonic valve implantation: Techniques, current roles, and future implications. *World J Cardiol* 2021; 13(5): 117-129

**URL:** <https://www.wjgnet.com/1949-8462/full/v13/i5/117.htm>

**DOI:** <https://dx.doi.org/10.4330/wjc.v13.i5.117>

## INTRODUCTION

Tetralogy of Fallot (TOF) is the most common cyanotic congenital heart disease occurring in approximately 3 per 10000 live births[1]. This defect is comprised of the following four components: Ventricular septal defect (VSD), aortic override, right ventricular hypertrophy, and right ventricular outflow tract (OT) obstruction in the form of infundibular stenosis/pulmonary valve stenosis/pulmonary artery stenosis. Correction of this heart defect involves patch closure of the VSD and relief of the right ventricular outflow tract (RVOT) obstruction. The end result uniformly leaves the patient with residual OT dysfunction with some form of pulmonic stenosis (PS)[2] and/or pulmonary valve insufficiency (PI) leading to deleterious effects over the long-term[3,4]. The chronic effects of pressure and volume loading on the right ventricular (RV) ultimately lead to symptomatic ventricular dysfunction and arrhythmia[2,3].

While TOF is the stereotypic diagnosis for the management of residual RVOT disease, other congenital heart defects are managed similarly. Conotruncal defects such as truncus arteriosus, d-transposition of the great arteries with a VSD and pulmonary stenosis, double outlet right ventricle can be repaired with a VSD closure to the aortic valve and placement of a RV to pulmonary artery conduit. Another common example is the Ross operation for aortic valve stenosis which leaves the patient with a reconstructed RV to pulmonary artery connection. These surgically reconstructed outflows all universally fail over time leading to the same long-term deleterious effect on the RV.

Until recently, surgical pulmonic valve replacement (SPVR) was utilized universally for pulmonary valve replacement (PVR) and relief of RVOT dysfunction. In 2000, Bonhoeffer *et al*[5] implanted the first transcatheter valve into a human[5]. This led to the development of Melody Transcatheter Pulmonary Valve (Medtronic Inc, Minneapolis, MN), receiving Humanitarian Device Exemption (HDE) Food and Drug approval (FDA) for commercial use in dysfunctional RV to pulmonary conduits in the United States in 2010. Subsequent studies allowed for approval of the Sapien XT valve (Edwards Lifesciences LLC, Irvine, California) as transcatheter PVR in failed RV to pulmonary conduits[6].

In the following review we will review the indications for transcatheter pulmonic valve implantation (TPVI), discuss procedural considerations, techniques, outcomes as well as future considerations.

## INDICATIONS FOR INTERVENTION

The indications for PVR, especially *via* transcatheter means are gradually evolving. Most clinical societies agree with need for PVR in symptomatic patients in the TOF spectrum with moderate to severe PS or PI (Table 1). However, the question of asymptomatic PI persists. The deleterious effects of progressive RV dilation with

**Table 1 Comparison of American College of Cardiology/American Heart Association and European Society of Cardiology guidelines for pulmonic valve placement**

Indication	Recommendation		Level of evidence	
	ACC/AHA 2018	ESC 2010	ACC/AHA 2018	ESC 2010
Symptomatic with moderate/severe PR	I	I	B	C
Asymptomatic with moderate/severe PR and RV dilation	IIa	IIa	B	C
Asymptomatic with moderate/severe PR and ventricular arrhythmias	IIb	IIa	C	C

ACC: American College of Cardiology; AHA: American Heart Association; ESC: European Society of Cardiology; PR: Pulmonary regurgitation; RV: Right ventricle

respect to increased mortality are well known, however it has not been convincingly proven that SPVR improves mortality or the incidence of ventricular arrhythmias[7]. There have been multiple studies to investigate what threshold of RV dilation should be used to pursue PVR in an asymptomatic patient which allows a reasonable chance of reversal of structural abnormalities[8]. However, surgical PVR for asymptomatic patients with lesser degrees of RV dilation has also been shown to increase chances of heart failure, atrial arrhythmias or ventricular tachycardia[9]. Thus, the need to balance the deleterious effects of progressive RV dilation with those of repeated operations and cardiopulmonary bypass need to be weighed together. With the increase in use of TPVI, the latter can be circumvented and with solutions for native RVOT also on horizon, it is likely that more asymptomatic patients may benefit from the procedure. Currently, generally accepted indications for TPVI in asymptomatic patients are the following[3]: (1) RV indexed end diastolic volume > 160 mL/m<sup>2</sup> or RV indexed end systolic volume > 80 mL/m<sup>2</sup>; (2) RV end diastolic volume > 2 times of left ventricular end diastolic volume; (3) Significant RV dysfunction (RV ejection fraction < 45%); (4) Progressive tricuspid regurgitation in the setting of a dilated RV; and (5) Ventricular arrhythmias with a dilated RV.

## PROCEDURE

Generally multidisciplinary discussion with different cardiology subspecialties (almost always with adult congenital specialists), congenital cardiac surgery and cardiac anesthesia is recommended to determine best strategy for each individual patient. Multi-modality imaging review and good understanding of prior operations is essential. It is of vital importance to understand the nominal size of RV to pulmonary artery conduits and bioprosthetic pulmonary valves as well as any known coronary artery anomalies.

General anesthesia is usually preferred[10]. Biplane fluoroscopy is most often employed to understand the RVOT and pulmonary artery anatomy in two views and requires patient positioning with the arms elevated in a non-stretched position to avoid brachial plexus injury[11]. Most patients have had multiple catheterizations/surgeries and may have unique vascular access considerations. While femoral venous access is often the first choice, the jugular (ideally right) can offer advantages for valve delivery as well for flexing of Edwards Sapien delivery systems[12].

### Baseline data

A baseline right and left heart catheterization hemodynamic assessment is performed as well as RVOT, pulmonary artery, and aorta/coronary angiography. From this data, a plan for conduit rehabilitation and final balloon sizing is developed as well as ascertaining risk for conduit rupture and coronary artery compression. It also identifies other pulmonary artery stenosis that might need to be intervened upon during the procedure. After baseline data is obtained a stiff wire [Lunderquist Extra Stiff Guidewire (Cook Medical, Bloomington, IN), Amplatz Superstiff Guidewire (Boston Scientific, Boston, MA)] is positioned into the distal lower lobe of right or left pulmonary artery.

### **Conduit preparation-balloon/stent**

Many dysfunctional RVOTs involve significant conduit stenosis. This requires conduit rehabilitation and stenting to achieve acceptable post procedure RV pressure. Serial balloon dilation with high pressure balloon angioplasty is often necessary. This places the conduit at risk for rupture necessitating covered stent angioplasty with a Cheatham-platinum covered stent (Numed, Hopkinton, New York, United States) (Figure 1)[13]. Once assured that an adequate final diameter can be achieved, bare metal stent angioplasty with large bore hand mounted stainless-steel stents [Palmaz XL (Cordis, Milpitas, CA, United States), IntraStent Max LD (EV3, Plymouth, MN, United States)] are implanted. Because of stent fracture risk of the Melody valve, multiple stents might be necessary to avoid recoil and limit metal fatigue[14]. Ideally, for an adult, the final diameter of the conduit should be at least 20-22 mm, otherwise, a residual RVOT gradient will persist.

### **Coronary artery and aorta testing**

Prior to initial stenting of the conduit, assessment for risk of coronary artery obstruction is necessary. A variety of coronary artery anomalies can be at risk including a left anterior descending from the right coronary artery, ostial stenosis, abnormal location secondary to reimplantation. Coronary artery testing is performed with either aortic root angiography and/or selective coronary angiography. This is performed with the Anteroposterior tube angled caudal to perform and “down the barrel” assessment (Figure 2). If the coronary artery flow is compromised during balloon testing, this is considered a contraindication to proceeding with stent or PVI. While less commonly a problem, aortic root distortion causing aortic valve insufficiency has also been demonstrated[15].

### **Valve implant**

Once the conduit is adequately prepared-the Melody valve is hand crimped onto the balloon Ensemble system (Medtronic, Minneapolis, MN, United States) (Figure 3). Balloons range from 18-22 mm and there are descriptions of maintained valve competency even when mounted on a 24 mm balloon[16]. The outer diameter of the valve is approximately 2 mm larger than the balloon diameter. The Edwards XT valve is crimped onto the Novaflex delivery system using the proprietary process (Figure 4).

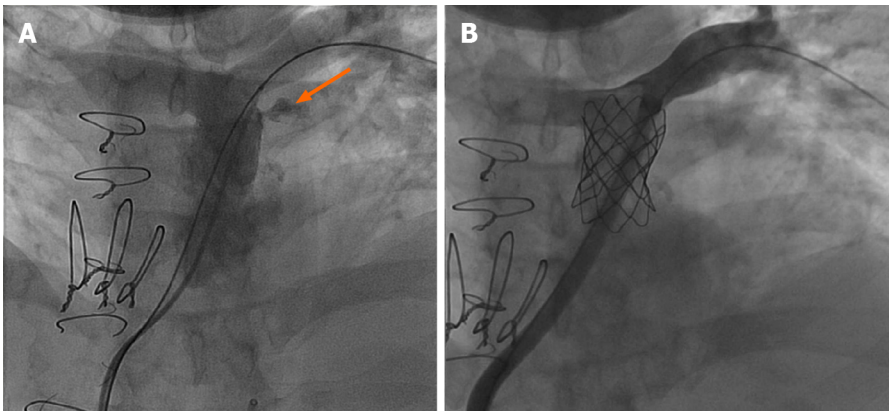
After delivery system preparation, the delivery system is advanced into the appropriate position. Numerous techniques can be used to aid in delivery system advancement such as balloon assisted or a buddy wire methods[17]. Secondary to the stiffness of the delivery system, Edwards Sapien XT valve is more difficult to pass into the OT. Use of the Sapien S3 and the smaller delivery system is more amenable to traversing the RVOT. Use of the Edwards XT or Sapien S3 through a long (65 cm) large bore Gore sheath (Flagstaff, AZ) into position has mitigated some of the difficulty[18]. While the valve implant is typically stable, rapid pacing at 140-160 beats per minute can be performed to aid in valve positioning. Following valve implant, post implant hemodynamic data are obtained, and an angiogram is performed to evaluate for perivalvar leak and valve competence. Some have advocated for intracardiac echocardiogram imaging post implant to evaluate the implant and have a reference for the future[19]. Typically for hemostasis post procedure a figure of 8 stitch is sufficient[20].

### **Special considerations—valve in valve**

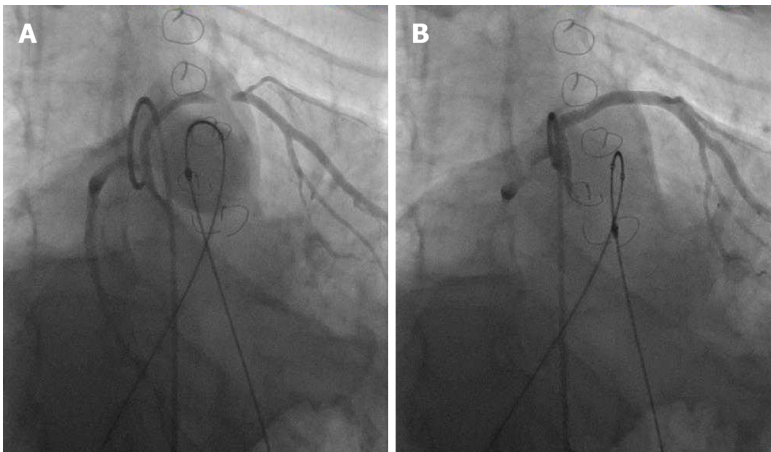
Valve in bioprosthetic valve implantation tends to be a less complex procedure. The risk of coronary compression is less as the valve cannot be over-expanded at low pressure, and generally there is no need to pre-stent unless there is significant conduit stenosis separate from the valve. The type and size of bioprosthetic valve is of utmost importance as the inner diameter dictates the size of transcatheter valve. Many descriptions of valve fracture exist, expanding the valve to the size or just larger of the outer diameter with a high pressure True balloon (Atlas, Atlas Gold, or True Balloon, Bard Peripheral Vascular, Inc, Tempe, AZ) (Figure 5)[21]. This avoids future development of valve patient size mismatch. In the pulmonary system, fracture can be safely performed prior to valve implantation. One must be mindful of the coronary artery anatomy when considering valve fracture.

### **Special consideration—native OT**

The OT after transannular patch repair for TOF can be quite complex. Many times, it lacks a tubular landing zone and can have a funnel shape from the RV out to the pulmonary arteries. However, some native OTs have anatomy suitable for currently available valve to be used off-label. Balloon sizing with a large diameter (> 35 mm)



**Figure 1 Covered Cheatham Platinum stent placement after conduit disruption. 23 years old patient with truncus arteriosus status post repair with a 20 mm homograft.** A: With high pressure dilation at 22 mm, disruption of wall of conduit is noted (orange arrow) but contained; B: Covered Cheatham Platinum stent placed with resolution of the extravasation.



**Figure 2 Tetralogy of Fallot full repair with 20 mm homograft.** 28-year-old with tetralogy of Fallot status post repair with 20 mm homograft. A: Left anterior descending (LAD) arise from the right coronary coursing around the homograft. With inflation of a 22 mm balloon, the mid LAD is compressed; B: The coronary flow returns back to baseline upon balloon deflation.

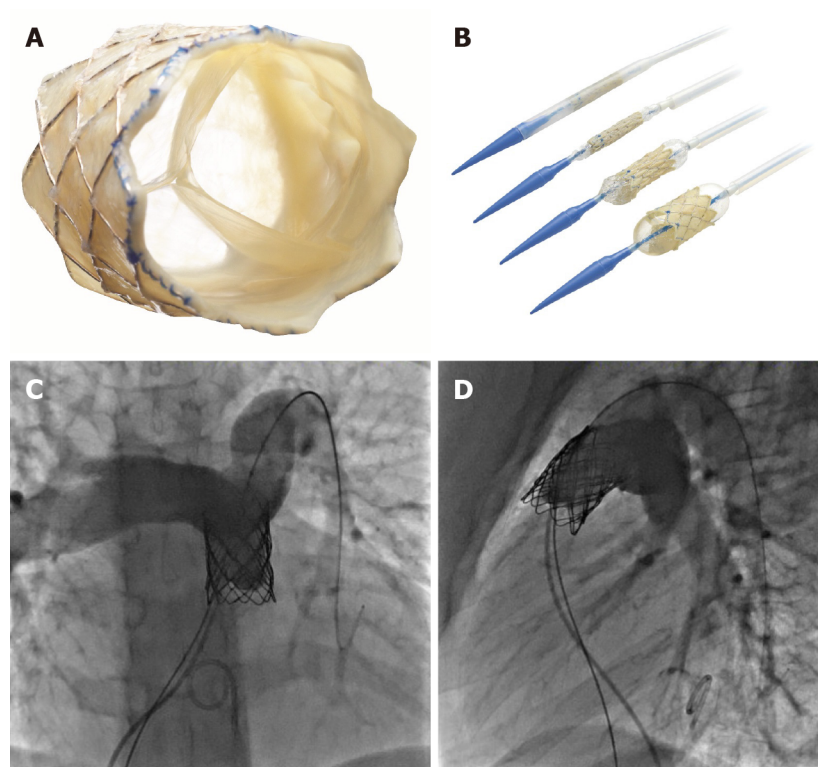
compliant balloon can identify a suitable landing zone for a balloon expandable stent. In appropriate anatomic arrangements, this is reported with good short- and long-term success (Figure 6)[22]. Valve implant into one or both of the proximal branch pulmonary arteries has also been shown to be effective in reducing the degree of PI[23].

The Medtronic Harmony Valve (Minneapolis, MN, United States) (Figure 7) is a self-expanding valve that can be used in native OT after three-dimensional sizing data has been obtained. Similarly, the Alterra pre-stent (Edwards Lifesciences LLC, Irvine, California) (Figure 8) allows for creation of a landing zone to allow for implantation of a 29 Sapien S3 valve. Both are currently under investigation at the time of writing this review[24,25].

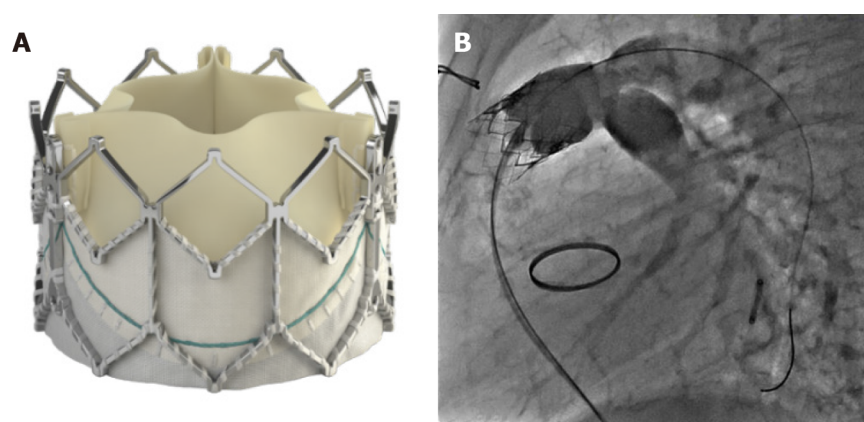
## AVAILABLE AND UPCOMING VALVE SYSTEMS

The Melody valve (Medtronic Inc, Minneapolis, MN, United States) traces its origins to the implantation of an 18 mm bovine jugular vein mounted on a platinum stent in a 12 year old patient with conduit failure by Bonhoeffer *et al*[5]. In its current iteration, the Melody valve is a bovine jugular vein sutured inside of a Platinum Iridium stent, available in two sizes – 20 and 22 mm. The two sizes use 16 and 18 mm vein segments intended to be expanded up to 20 and 22 mm respectively. The valve is delivered *via* the Medtronic Ensemble delivery system which utilizes a “balloon-in-balloon” (NuMED Inc, Hopkinton, NY, United States). The delivery system is 22F and is available in 18, 20, and 22 mm sizes.





**Figure 3 Melody transcatheter pulmonic valve.** A: En-face view of Melody transcatheter pulmonic valve; B: Melody valve Ensemble with loaded valve demonstrating the two-stage balloon-in-balloon inflation (Reproduced with permission from Medtronic, Inc, Minneapolis, MN, United States); C: Angiogram after placement of a stainless steel pre-stent; D: 20 mm Melody valve in Antero-posterior and lateral projections.

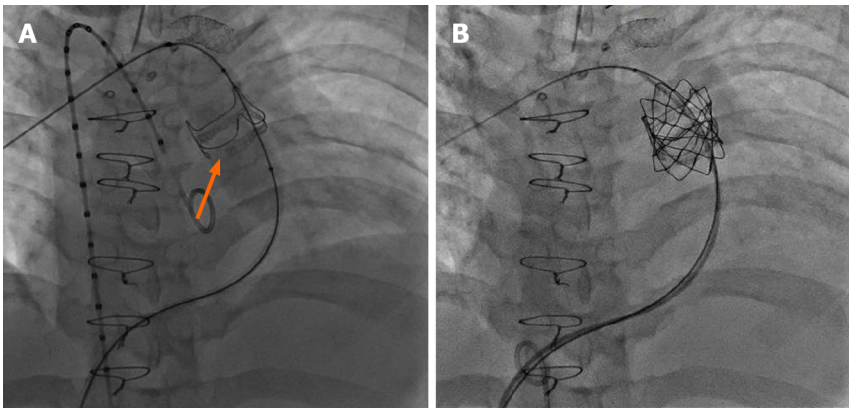


**Figure 4 Edwards Sapien XT™.** A: Edwards Sapien XT™ valve (Reproduced with permission of Edwards Lifesciences LLC, Irvine, CA, United States); B: Angiogram after placement of a 23 mm Edwards Sapien XT™ valve in a Contegra conduit stented with a stainless-steel stent up dilated up to 22 mm.

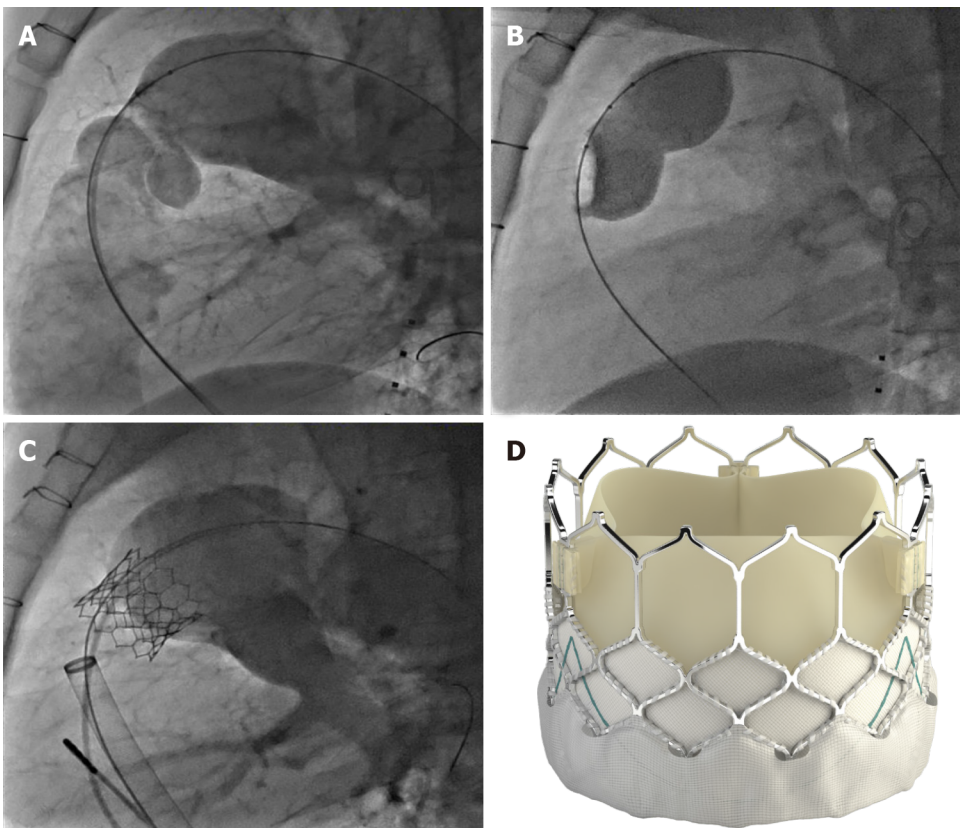
Experience from European centers with the Melody valve predates use in the United States—Lurz *et al*[26] reported their series of 155 implants with an excellent success rate of 96.7%, freedom from reoperation rates of 70% after 70 mo and lower reoperation rates with increasing familiarity/expertise with the valve system[26]. The United States Investigational Device Exemption trial reported its medium to long term results in 2015 enrolling a total of 171 patients with 148 successful implants and a re-intervention free rate of 76% at 5 years[27]. The Melody valve received Conformité Européenne Mark approval in 2006; the FDA granted HDE approval in 2010 and full post market approval in 2015. The United States post market approval study had 100 implants with 98% success rate and a 98% rate of freedom from catheter/surgical re-intervention[28].

The Edwards Sapien XT (Edwards Lifesciences, Irvine, CA, United States) transcatheter heart valve (THV) was approved by the FDA for use in the pulmonic position in 2016 (Figure 4). The valve is made of bovine pericardial tissue and





**Figure 5** Transcatheter valve in valve with valve fracture: 21 years old with congenital pulmonary stenosis with a prior dysfunctional 21 mm Edwards Magna™ valve- 22 mm. A: Atlas balloon inflated to 20 ATM fractured the valve ring (orange arrow); B: placement of 22 mm Melody valve.

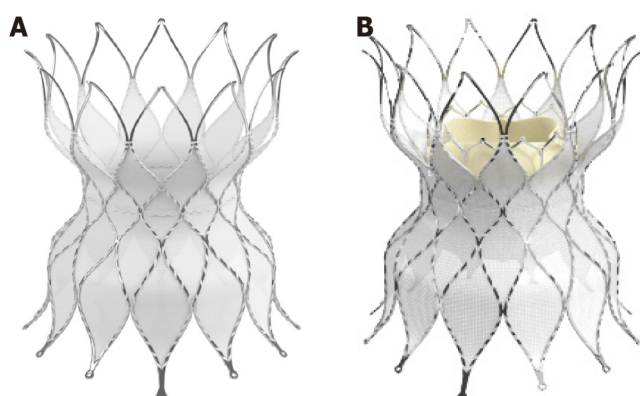


**Figure 6** Native transcatheter pulmonary valve implantation. A and B: 46 years old with prior surgical pulmonary valvotomy as a child presenting with severe insufficiency (A), balloon sizing performed with 40 mm Numed sizing balloon demonstrated a narrowed landing zone of 27 mm (B); C: Native implant with a 29 mm Sapien 3™ valve was feasible through a 26 F 65 cm Gore DrySeal sheath; D: Edwards Sapien 3™ valve (reproduced with permission from Edwards Lifesciences LLC, Irvine, CA, United States).

mounted on a cobalt chromium stent with a fabric skirt on the outside lower part of the stent to minimize perivalvular regurgitation. The valve sizes are 23, 26 and 29 mm and delivered *via* the Edwards Novaflex delivery system. The COMPASSION clinical trial enrolled 81 patients and implanted the Sapien XT THV in 69 with a 93.7% freedom from re-intervention at 3 years[6]. There are ongoing clinical trials, for post market approval surveillance of the use of this valve and also for the evaluation of the Edwards Sapien 3 THV (Figure 4). The Sapien 3 expands the valve sizes with a 20 mm option—the Commander valve delivery system is also believed to be better suited for delivery into the RVOT. Data from a series of 56 patients from Germany suggests excellent procedural success and no reinterventions were needed up to 2 years of follow up[29].



**Figure 7** Medtronic Harmony transcatheter pulmonic valve (Reproduced with permission from Medtronic, Inc, Minneapolis, MN, United States).



**Figure 8** Edwards native outflow tract prestant. A: Alterra Adaptive Prestent™; B: Edwards Sapien 3™ valve implanted inside the Alterra prestant (Reproduced with permission from Edwards Lifesciences LLC, Irvine, CA, United States).

The venus *P* valve (Venus Medtech, Hangzhou, China) is a newer generation valve using porcine pericardium leaflets mounted inside the middle segment of a self-expanding nitinol stent. The middle segment measures 22-36 mm in diameter and 20-35 mm in length. The proximal and distal ends are flared to provide an hourglass shape that helps with anchoring in the RVOT and main pulmonary artery. The delivery system consists of a 19-24F capsule which houses the crimped stent valve and a 15F shaft. This system is designed keeping in mind the unmet need of treating PI in native RVOT which in most circumstances sizes out of approved valve systems' range in adults. Multiple small series report favorable outcomes with the venus *P* valve—in a 38-patient retrospective multi center report, 37 implantations were successful; 1 patient subsequently required surgical repositioning. With a median follow up of 25 mo, no significant valve dysfunction was reported. Stent fractures were reported in 27% patients but the significance of those with this valve system is not yet known[30].

Another valve system with a similar concept is the Pulsta valve (TaeWoong Medical Co, Gyeonggi-do, South Korea). It also has a knitted double strand Nitinol wire frame which is self-expanding with treated porcine pericardial tissue leaflets sutured on. The valve is available in 18-28 mm sizes (2 mm increments). The length of the stent frame is 28-38 mm depending on the valve size and the ends are flared 4 mm wider than the outer diameter for anchoring. The diameter of the “valve loading zone” is 18F while the shaft of the delivery system is 12F in caliber. There is a “hook block” to minimize chances of abrupt delivery and migration. In a Korean feasibility study, ten TOF patients with PR were treated with the Pulsta valve—five with 26 mm and other five with 28 mm valve. There were no major complications with all 10 implants showing good valve function and significant reduction in RV volumes[31].

## OUTCOMES OF TPVI

### **Procedural success and complications**

With growing experience, procedural success has improved remarkably—in a prior meta-analysis, we reported a success rate of 96.2% using observational reports, which is consistent with the 98% success rate reported in the Melody United States post market approval surveillance study[28,32]. The most dreaded complications for TPVI are conduit rupture and coronary compression. Conduit rupture is estimated in about 4.1% patients—more so in homografts[32,33]. In recent years, the practice of performing TPVI off label in conduits sized < 16 mm has increased, and the rate of conduit rupture is much more in this population. Varied estimates from 16% to 50% have been reported—however most of these ruptures are limited and can usually be managed with a covered stent implant[34,35].

Coronary compression was reported more frequently in the earlier TPVI experience and led to procedural mortality. In our pooled analysis of 1044 attempted TPVI, there were a total of five coronary complications. There were only two deaths in elective cases, and both were attributed to coronary compression[32]. However, with more experience and careful testing prior to stent/valve implant, these have become extremely rare. In the United States post market approval study, only 1 out of 100 implants had coronary compression was reported which required conversion to surgery. Five other patients out of the originally considered 120 patients had evidence of coronary compression on balloon testing[28]. It should especially be noted that anomalous origin of coronaries especially left coronary artery arising from the right cusp is a strong predictor of coronary compression[36].

### **Re-interventions**

The issue of needing frequent re-interventions or re-operations has largely been deemed secondary to stent fractures of the Melody valve and the rates for same have vastly improved since the adoption of pre-stenting. The United States Investigational Device Exemption trial for example had only 10% pre-stenting in the first tertile of the study and reported a freedom from re-intervention rate of 76% after 5 years. The other factors leading to re-interventions were found to be implant in a homograft, a higher post implant gradient (> 25 mmHg) and pre-existing significant tricuspid regurgitation[27]. Conversely, in a French registry study with 96.9% pre-stenting only 3/62 (4.8%) patients needed re-operation for conduit re-stenosis at a median follow up of 4.6 years[37]. The other common cause for re-operation is endocarditis, which is discussed separately. The issue of re-operation/intervention has not been adequately answered for the Edwards Sapien THV because of smaller number of studies. The COMPASSION trial reported a freedom from re-intervention rate of 93.7% after 3 years with seven re-interventions in four patients[6].

### **Endocarditis**

Endocarditis/blood stream infection has been described as a late complication after TPVI. There have been variable reports of endocarditis after Melody and Sapien valve implants, more for the former. McElhinney *et al*[38] used three patient cohorts in North America and Europe with a cumulative sample of 309 patients and a follow up of 5.1 years—Endocarditis was diagnosed in 46 patients with TPV related endocarditis occurring in 35 patients[38]. Median time to endocarditis was 3.1 years. At 5 years, 89% patients were free of endocarditis. However widely variable reports of endocarditis rates exist—Abdelghani *et al*[39] in their systematic review reported cumulative incidence ranging from 3.2%-25% with the median time from TPVI to onset of endocarditis being 18 mo[39]. 79% of these patients had evidence of RVOT obstruction with vegetations detected in 34% cases. They also did a patient level pooled analysis from 69 case reports, 8.7% patients died and 52% required surgical or transcatheter re-intervention. Less data exists for Edwards Sapien THV—97.1% freedom from endocarditis was reported in the COMPASSION study at 3 years[6]. There are also multiple reports with no endocarditis in the medium term after TPVI with Sapien THV. In a French cohort of 79 patients with a median follow up of 1.8 years, 8/32 Melody valve patients developed endocarditis compared to none for the 47 Sapien XT THV[40].

It is also interesting to note that there are differences in endocarditis rates amongst surgical PVR recipients—rates are much higher in patients receiving bovine jugular vein conduits as compared to homografts—20.4% *vs* 2.4%[41].

### Comparison to surgical PVR

Very few head-to-head comparisons of SPVR and TPVI exist. Caughron *et al*[42] reported a study of 66 patients (SPVR 36; TPVI 30) and found no differences in mortality, cardiovascular re-admissions or repeat interventions in the two groups[42]. A recent meta-analysis of 1132 TPVI and 4939 SPVR patients also did not show any difference in mortality or repeat interventions. However, there were fewer procedure related complications and higher rate of endocarditis with TPVI[43]. A study using the Nationwide Inpatient Sample database also suggested the same-comparing an estimated 8449 SPVR and 555 TPVI admissions, it showed a higher in-hospital mortality with SPVR along with other iatrogenic cardiac complications. Also, TPVI predictably had less hospital length of stay decreasing the impact on societal loss of wages for patients/care givers[44].

## CONCLUSION

TPVI has dramatically evolved over that past decade and has become a common procedure to manage many patients with dysfunctional RVOT. The short and midterm results are overall quite favorable with a low and acceptable morbidity and mortality. Ideally in the future, smaller and more flexible delivery systems will be developed. With native OTs, intervention becomes quite appealing if a new valve can be placed inside indefinitely thus avoiding surgery except for at the time of initial repair. As all the existing valves have been implanted for a short time with limited follow up, future data is necessary to understand their overall longevity and types of valve failure. Furthermore, as many patients have smaller and stenotic conduits even in a growing child, adoption of new surgical techniques to allow for further expansion of small and stenotic conduits could be of significant clinical benefit.

## ACKNOWLEDGEMENTS

The Authors would like to personally thank both Edwards Lifesciences, LLC, Irvine, CA, United States and Medtronic, Inc, Minneapolis, MN, United States for granting permission of their product images for use in this manuscript.

## REFERENCES

- 1 **Perry LW**, Neill CA, Ferencz C, Rubin JD, Loffredo CA. Infants with congenital heart disease: the cases. Perspectives in pediatric cardiology Vol 4: Epidemiology of congenital heart disease, the Baltimore-Washington Infant Study 1981-1989. Ferencz C, Loffredo CA, Rubin JD, Magee Ca, editors. Mount Kisco, NY: Futura Publishing Company; 1993: 33-62
- 2 **Sabate Rotes A**, Connolly HM, Warnes CA, Ammash NM, Phillips SD, Dearani JA, Schaff HV, Burkhardt HM, Hodge DO, Asirvatham SJ, McLeod CJ. Ventricular arrhythmia risk stratification in patients with tetralogy of Fallot at the time of pulmonary valve replacement. *Circ Arrhythm Electrophysiol* 2015; **8**: 110-116 [PMID: 25416756 DOI: 10.1161/CIRCEP.114.001975]
- 3 **Stout KK**, Daniels CJ, Aboulhosn JA, Bozkurt B, Broberg CS, Colman JM, Crumb SR, Dearani JA, Fuller S, Gurvitz M, Khairy P, Landzberg MJ, Saidi A, Valente AM, Van Hare GF. 2018 AHA/ACC Guideline for the Management of Adults With Congenital Heart Disease: Executive Summary: A Report of the American College of Cardiology/American Heart Association Task Force on Clinical Practice Guidelines. *J Am Coll Cardiol* 2019; **73**: 1494-1563 [PMID: 30121240 DOI: 10.1016/j.jacc.2018.08.1028]
- 4 **Kirklin JK**, Kirklin JW, Blackstone EH, Milano A, Pacifico AD. Effect of transannular patching on outcome after repair of tetralogy of Fallot. *Ann Thorac Surg* 1989; **48**: 783-791 [PMID: 2596914 DOI: 10.1016/0003-4975(89)90671-1]
- 5 **Bonhoeffer P**, Boudjemline Y, Saliba Z, Merckx J, Aggoun Y, Bonnet D, Acar P, Le Bidois J, Sidi D, Kachaner J. Percutaneous replacement of pulmonary valve in a right-ventricle to pulmonary-artery prosthetic conduit with valve dysfunction. *Lancet* 2000; **356**: 1403-1405 [PMID: 11052583 DOI: 10.1016/S0140-6736(00)02844-0]
- 6 **Kenny D**, Rhodes JF, Fleming GA, Kar S, Zahn EM, Vincent J, Shirali GS, Gorelick J, Fogel MA, Fahey JT, Kim DW, Babaliaros VC, Armstrong AK, Hijazi ZM. 3-Year Outcomes of the Edwards SAPIEN Transcatheter Heart Valve for Conduit Failure in the Pulmonary Position From the COMPASSION Multicenter Clinical Trial. *JACC Cardiovasc Interv* 2018; **11**: 1920-1929 [PMID: 30286853 DOI: 10.1016/j.jcin.2018.06.001]
- 7 **de Torres-Alba F**, Kaleschke G, Baumgartner H. Impact of Percutaneous Pulmonary Valve



- Implantation on the Timing of Reintervention for Right Ventricular Outflow Tract Dysfunction. *Rev Esp Cardiol (Engl Ed)* 2018; **71**: 838-846 [PMID: 29859895 DOI: 10.1016/j.rec.2018.05.001]
- 8 **Therrien J**, Siu SC, McLaughlin PR, Liu PP, Williams WG, Webb GD. Pulmonary valve replacement in adults late after repair of tetralogy of fallot: are we operating too late? *J Am Coll Cardiol* 2000; **36**: 1670-1675 [PMID: 11079675 DOI: 10.1016/s0735-1097(00)00930-x]
  - 9 **Bokma JP**, Geva T, Sleeper LA, Babu Narayan SV, Wald R, Hickey K, Jansen K, Wassall R, Lu M, Gatzoulis MA, Mulder BJ, Valente AM. A propensity score-adjusted analysis of clinical outcomes after pulmonary valve replacement in tetralogy of Fallot. *Heart* 2018; **104**: 738-744 [PMID: 29092913 DOI: 10.1136/heartjnl-2017-312048]
  - 10 **Arboleda Salazar R**, Heggie J, Wolski P, Horlick E, Osten M, Meineri M. Anesthesia for Percutaneous Pulmonary Valve Implantation: A Case Series. *Anesth Analg* 2018; **127**: 39-45 [PMID: 29543640 DOI: 10.1213/ANE.0000000000002904]
  - 11 **Souza Neto EP**, Durand PG, Sassolas F, Vial C, Lehot JJ. Brachial plexus injury during cardiac catheterisation in children. Report of two cases. *Acta Anaesthesiol Scand* 1998; **42**: 876-879 [PMID: 9698969 DOI: 10.1111/j.1399-6576.1998.tb05338.x]
  - 12 **Zampi JD**, Berman DP, Bocks ML, Yu S, Zahn EM, Lu JC, Shaya JA, Armstrong AK. Factors associated with the internal jugular venous approach for Melody™ Transcatheter Pulmonary Valve implantation. *Cardiol Young* 2016; **26**: 948-956 [PMID: 26521753 DOI: 10.1017/S1047951115001663]
  - 13 **Delaney JW**, Goldstein BH, Bishnoi RN, Bisselou KSM, McEnaney K, Minahan M, Ringel RE; PARCS Investigators. Covered CP Stent for Treatment of Right Ventricular Conduit Injury During Melody Transcatheter Pulmonary Valve Replacement. *Circ Cardiovasc Interv* 2018; **11**: e006598 [PMID: 30354627 DOI: 10.1161/CIRCINTERVENTIONS.118.006598]
  - 14 **Cardoso R**, Ansari M, Garcia D, Sandhu S, Brinster D, Piazza N. Pre-stenting for prevention of melody valve stent fractures: A systematic review and meta-analysis. *Catheter Cardiovasc Interv* 2016; **87**: 534-539 [PMID: 26481871 DOI: 10.1002/ccd.26235]
  - 15 **Torres AJ**, McElhinney DB, Anderson BR, Turner ME, Crystal MA, Timchak DM, Vincent JA. Aortic Root Distortion and Aortic Insufficiency During Balloon Angioplasty of the Right Ventricular Outflow Tract Prior to Transcatheter Pulmonary Valve Replacement. *J Interv Cardiol* 2016; **29**: 197-207 [PMID: 26822282 DOI: 10.1111/joic.12270]
  - 16 **Cheatham SL**, Holzer RJ, Chisolm JL, Cheatham JP. The Medtronic Melody® transcatheter pulmonary valve implanted at 24-mm diameter--it works. *Catheter Cardiovasc Interv* 2013; **82**: 816-823 [PMID: 23359563 DOI: 10.1002/ccd.24821]
  - 17 **Shah RR**, Poommipanit P, Law MA, Amin Z. Anchor balloon, buddy wire, and wire and sheath techniques to deploy percutaneous pulmonary valves in tetralogy of fallot patients. *Catheter Cardiovasc Interv* 2018; **92**: 915-920 [PMID: 28303658 DOI: 10.1002/ccd.27022]
  - 18 **Kenny D**, Morgan GJ, Murphy M, AlAlwi K, Giugno L, Zablah J, Carminati M, Walsh K. Use of 65 cm large caliber Dryseal sheaths to facilitate delivery of the Edwards SAPIEN valve to dysfunctional right ventricular outflow tracts. *Catheter Cardiovasc Interv* 2019; **94**: 409-413 [PMID: 31408262 DOI: 10.1002/ccd.28409]
  - 19 **Whiteside W**, Pasquali SK, Yu S, Bocks ML, Zampi JD, Armstrong AK. The Utility of Intracardiac Echocardiography Following Melody™ Transcatheter Pulmonary Valve Implantation. *Pediatr Cardiol* 2015; **36**: 1754-1760 [PMID: 26169526 DOI: 10.1007/s00246-015-1230-5]
  - 20 **Morgan GJ**, Waragai T, Eastaugh L, Chaturvedi RC, Lee KJ, Benson L. The fellows stitch: large caliber venous hemostasis in pediatric practice. *Catheter Cardiovasc Interv* 2012; **80**: 79-82 [PMID: 22105903 DOI: 10.1002/ccd.23406]
  - 21 **Shahanavaz S**, Asnes JD, Grohmann J, Qureshi AM, Rome JJ, Tanase D, Crystal MA, Latson LA, Morray BH, Hellenbrand W, Balzer DT, Gewillig M, Love JC, Berdjis F, Gillespie MJ, McElhinney DB. Intentional Fracture of Bioprosthetic Valve Frames in Patients Undergoing Valve-in-Valve Transcatheter Pulmonary Valve Replacement. *Circ Cardiovasc Interv* 2018; **11**: e006453 [PMID: 30354783 DOI: 10.1161/CIRCINTERVENTIONS.118.006453]
  - 22 **Georgiev S**, Tanase D, Ewert P, Meierhofer C, Hager A, von Ohain JP, Eicken A. Percutaneous pulmonary valve implantation in patients with dysfunction of a "native" right ventricular outflow tract - Mid-term results. *Int J Cardiol* 2018; **258**: 31-35 [PMID: 29544952 DOI: 10.1016/j.ijcard.2017.11.091]
  - 23 **Qureshi AM**, Bansal N, McElhinney DB, Boudjemline Y, Forbes TJ, Maschietto N, Shahanavaz S, Cheatham JP, Krasuski R, Lamers L, Chessa M, Morray BH, Goldstein BH, Noel CV, Wang Y, Gillespie MJ. Branch Pulmonary Artery Valve Implantation Reduces Pulmonary Regurgitation and Improves Right Ventricular Size/Function in Patients With Large Right Ventricular Outflow Tracts. *JACC Cardiovasc Interv* 2018; **11**: 541-550 [PMID: 29566799 DOI: 10.1016/j.jcin.2018.01.278]
  - 24 **Zahn EM**, Chang JC, Armer D, Garg R. First human implant of the Alterra Adaptive PreStent™: A new self-expanding device designed to remodel the right ventricular outflow tract. *Catheter Cardiovasc Interv* 2018; **91**: 1125-1129 [PMID: 29521437 DOI: 10.1002/ccd.27581]
  - 25 **Bergersen L**, Benson LN, Gillespie MJ, Cheatham SL, Crean AM, Hor KN, Horlick EM, Lung TH, McHenry BT, Osten MD, Powell AJ, Cheatham JP. Harmony Feasibility Trial: Acute and Short-Term Outcomes With a Self-Expanding Transcatheter Pulmonary Valve. *JACC Cardiovasc Interv* 2017; **10**: 1763-1773 [PMID: 28882284 DOI: 10.1016/j.jcin.2017.05.034]
  - 26 **Lurz P**, Coats L, Khambadkone S, Nordmeyer J, Boudjemline Y, Schievano S, Muthurangu V, Lee TY, Parenzan G, Derrick G, Cullen S, Walker F, Tsang V, Deanfield J, Taylor AM, Bonhoeffer P.



- Percutaneous pulmonary valve implantation: impact of evolving technology and learning curve on clinical outcome. *Circulation* 2008; **117**: 1964-1972 [PMID: [18391109](#) DOI: [10.1161/CIRCULATIONAHA.107.735779](#)]
- 27 **Cheatham JP**, Hellenbrand WE, Zahn EM, Jones TK, Berman DP, Vincent JA, McElhinney DB. Clinical and hemodynamic outcomes up to 7 years after transcatheter pulmonary valve replacement in the US melody valve investigational device exemption trial. *Circulation* 2015; **131**: 1960-1970 [PMID: [25944758](#) DOI: [10.1161/CIRCULATIONAHA.114.013588](#)]
  - 28 **Armstrong AK**, Balzer DT, Cabalka AK, Gray RG, Javois AJ, Moore JW, Rome JJ, Turner DR, Zellers TM, Kreutzer J. One-year follow-up of the Melody transcatheter pulmonary valve multicenter post-approval study. *JACC Cardiovasc Interv* 2014; **7**: 1254-1262 [PMID: [25459038](#) DOI: [10.1016/j.jcin.2014.08.002](#)]
  - 29 **Lehner A**, Dashkalova T, Ulrich S, Fernandez Rodriguez S, Mandilaras G, Jakob A, Dalla-Pozza R, Fischer M, Schneider H, Tarusinov G, Kampmann C, Hofbeck M, Dähnert I, Kanaan M, Haas NA. Intermediate outcomes of transcatheter pulmonary valve replacement with the Edwards Sapien 3 valve - German experience. *Expert Rev Med Devices* 2019; **16**: 829-834 [PMID: [31432698](#) DOI: [10.1080/17434440.2019.1653180](#)]
  - 30 **Morgan G**, Prachasilchai P, Promphan W, Rosenthal E, Sivakumar K, Kappanayil M, Sakidjan I, Walsh KP, Kenny D, Thomson J, Koneti NR, Awasthy N, Thanopoulos B, Roymanee S, Qureshi S. Medium-term results of percutaneous pulmonary valve implantation using the Venus P-valve: international experience. *EuroIntervention* 2019; **14**: 1363-1370 [PMID: [30248020](#) DOI: [10.4244/EIJ-D-18-00299](#)]
  - 31 **Kim GB**, Song MK, Bae EJ, Park EA, Lee W, Lim HG, Kim YJ. Successful Feasibility Human Trial of a New Self-Expandable Percutaneous Pulmonary Valve (Pulsta Valve) Implantation Using Knitted Nitinol Wire Backbone and Trileaflet  $\alpha$ -Gal-Free Porcine Pericardial Valve in the Native Right Ventricular Outflow Tract. *Circ Cardiovasc Interv* 2018; **11**: e006494 [PMID: [29871940](#) DOI: [10.1161/CIRCINTERVENTIONS.118.006494](#)]
  - 32 **Chatterjee A**, Bajaj NS, McMahon WS, Cribbs MG, White JS, Mukherjee A, Law MA. Transcatheter Pulmonary Valve Implantation: A Comprehensive Systematic Review and Meta-Analyses of Observational Studies. *J Am Heart Assoc* 2017; **6** [PMID: [28778940](#) DOI: [10.1161/JAHA.117.006432](#)]
  - 33 **Boudjemline Y**, Malekzadeh-Milani S, Patel M, Thambo JB, Bonnet D, Iserin L, Fraisse A. Predictors and outcomes of right ventricular outflow tract conduit rupture during percutaneous pulmonary valve implantation: a multicentre study. *EuroIntervention* 2016; **11**: 1053-1062 [PMID: [25244126](#) DOI: [10.4244/EIJY14M09\\_06](#)]
  - 34 **Hascoet S**, Martins JD, Baho H, Kadirova S, Pinto F, Paoli F, Bitar F, Haweleh AA, Uebing A, Acar P, Ghez O, Fraisse A. Percutaneous pulmonary valve implantation in small conduits: A multicenter experience. *Int J Cardiol* 2018; **254**: 64-68 [PMID: [29273239](#) DOI: [10.1016/j.ijcard.2017.12.003](#)]
  - 35 **Shahanavaz S**, Qureshi AM, Levi DS, Boudjemline Y, Peng LF, Martin MH, Bauser-Heaton H, Keeshan B, Asnes JD, Jones TK, Justino H, Aboulhosn JA, Gray RG, Nguyen H, Balzer DT, McElhinney DB. Transcatheter Pulmonary Valve Replacement With the Melody Valve in Small Diameter Expandable Right Ventricular Outflow Tract Conduits. *JACC Cardiovasc Interv* 2018; **11**: 554-564 [PMID: [29566801](#) DOI: [10.1016/j.jcin.2018.01.239](#)]
  - 36 **Murray BH**, McElhinney DB, Cheatham JP, Zahn EM, Berman DP, Sullivan PM, Lock JE, Jones TK. Risk of coronary artery compression among patients referred for transcatheter pulmonary valve implantation: a multicenter experience. *Circ Cardiovasc Interv* 2013; **6**: 535-542 [PMID: [24065444](#) DOI: [10.1161/CIRCINTERVENTIONS.113.000202](#)]
  - 37 **Fraisse A**, Aldebert P, Malekzadeh-Milani S, Thambo JB, Piéchaud JF, Aucoururier P, Chatelier G, Bonnet D, Iserin L, Bonello B, Assaidi A, Kammache I, Boudjemline Y. Melody® transcatheter pulmonary valve implantation: results from a French registry. *Arch Cardiovasc Dis* 2014; **107**: 607-614 [PMID: [25453718](#) DOI: [10.1016/j.acvd.2014.10.001](#)]
  - 38 **McElhinney DB**, Sondergaard L, Armstrong AK, Bergersen L, Padera RF, Balzer DT, Lung TH, Berger F, Zahn EM, Gray RG, Hellenbrand WE, Kreutzer J, Eicken A, Jones TK, Ewert P. Endocarditis After Transcatheter Pulmonary Valve Replacement. *J Am Coll Cardiol* 2018; **72**: 2717-2728 [PMID: [30497557](#) DOI: [10.1016/j.jacc.2018.09.039](#)]
  - 39 **Abdelghani M**, Nassif M, Blom NA, Van Mourik MS, Straver B, Koolbergen DR, Kluin J, Tijssen JG, Mulder BJM, Bouma BJ, de Winter RJ. Infective Endocarditis After Melody Valve Implantation in the Pulmonary Position: A Systematic Review. *J Am Heart Assoc* 2018; **7** [PMID: [29934419](#) DOI: [10.1161/JAHA.117.008163](#)]
  - 40 **Hascoet S**, Mauri L, Claude C, Fournier E, Lourtet J, Riou JY, Brenot P, Petit J. Infective Endocarditis Risk After Percutaneous Pulmonary Valve Implantation With the Melody and Sapien Valves. *JACC Cardiovasc Interv* 2017; **10**: 510-517 [PMID: [28279319](#) DOI: [10.1016/j.jcin.2016.12.012](#)]
  - 41 **Van Dijk I**, Budts W, Cools B, Eyskens B, Boshoff DE, Heying R, Frerich S, Vanagt WY, Troost E, Gewillig M. Infective endocarditis of a transcatheter pulmonary valve in comparison with surgical implants. *Heart* 2015; **101**: 788-793 [PMID: [25539944](#) DOI: [10.1136/heartjnl-2014-306761](#)]
  - 42 **Caughron H**, Kim D, Kamioka N, Lerakis S, Yousef A, Maini A, Reginauld S, Sahu A, Shashidharan S, Jokhadar M, Rodriguez FH 3rd, Book WM, McConnell M, Block PC, Babaliarios V. Repeat Pulmonary Valve Replacement: Similar Intermediate-Term Outcomes With Surgical and Transcatheter Procedures. *JACC Cardiovasc Interv* 2018; **11**: 2495-2503 [PMID: [30503596](#) DOI: [10.1016/j.jcin.2018.07.042](#)]

- 43 **Ribeiro JM**, Teixeira R, Lopes J, Costa M, Pires A, Gonçalves L. Transcatheter Versus Surgical Pulmonary Valve Replacement: A Systemic Review and Meta-Analysis. *Ann Thorac Surg* 2020; **110**: 1751-1761 [PMID: [32268142](#) DOI: [10.1016/j.athoracsur.2020.03.007](#)]
- 44 **Chatterjee A**, Bhatia N, Torres MG, Cribbs MG, Mauchley DC, Law MA. Comparison of Transcatheter Pulmonic Valve Implantation With Surgical Pulmonic Valve Replacement in Adults (from the National Inpatient Survey Dataset). *Am J Cardiol* 2020; **125**: 135-139 [PMID: [31711632](#) DOI: [10.1016/j.amjcard.2019.09.031](#)]



Published by **Baishideng Publishing Group Inc**  
7041 Koll Center Parkway, Suite 160, Pleasanton, CA 94566, USA

**Telephone:** +1-925-3991568

**E-mail:** [bpgoffice@wjgnet.com](mailto:bpgoffice@wjgnet.com)

**Help Desk:** <https://www.f6publishing.com/helpdesk>

<https://www.wjgnet.com>

