

# World Journal of *Experimental Medicine*

Quarterly Volume 14 Number 1 March 20, 2024



## Contents

Quarterly Volume 14 Number 1 March 20, 2024

## EDITORIAL

Casu C, Orrù G. Potential of photodynamic therapy in the management of infectious oral diseases. *World J Exp Med* 2024; 14(1): 84284 [DOI: [10.5493/wjem.v14.i1.84284](https://doi.org/10.5493/wjem.v14.i1.84284)]

## FIELD OF VISION

Kelleni MT. COVID-19 mortality paradox (United States vs Africa): Mass vaccination vs early treatment. *World J Exp Med* 2024; 14(1): 88674 [DOI: [10.5493/wjem.v14.i1.88674](https://doi.org/10.5493/wjem.v14.i1.88674)]

## OPINION REVIEW

Milionis C, Ilias I, Lekkou A, Venaki E, Koukkou E. Future clinical prospects of C-peptide testing in the early diagnosis of gestational diabetes. *World J Exp Med* 2024; 14(1): 89320 [DOI: [10.5493/wjem.v14.i1.89320](https://doi.org/10.5493/wjem.v14.i1.89320)]

## MINIREVIEWS

Cotterell A, Griffin M, Downer MA, Parker JB, Wan D, Longaker MT. Understanding wound healing in obesity. *World J Exp Med* 2024; 14(1): 86898 [DOI: [10.5493/wjem.v14.i1.86898](https://doi.org/10.5493/wjem.v14.i1.86898)]

Sridhar GR, Gumpeny L. Emerging significance of butyrylcholinesterase. *World J Exp Med* 2024; 14(1): 87202 [DOI: [10.5493/wjem.v14.i1.87202](https://doi.org/10.5493/wjem.v14.i1.87202)]

## ORIGINAL ARTICLE

## Retrospective Cohort Study

Senchukova MA, Kalinin EA, Volchenko NN. Predictors of disease recurrence after radical resection and adjuvant chemotherapy in patients with stage IIb-IIIa squamous cell lung cancer: A retrospective analysis. *World J Exp Med* 2024; 14(1): 89319 [DOI: [10.5493/wjem.v14.i1.89319](https://doi.org/10.5493/wjem.v14.i1.89319)]

## Clinical Trials Study

Saeed EN, Faeq AK. Impact of primary percutaneous coronary intervention on ST-segment elevation myocardial infarction patients: A comprehensive analysis. *World J Exp Med* 2024; 14(1): 88541 [DOI: [10.5493/wjem.v14.i1.88541](https://doi.org/10.5493/wjem.v14.i1.88541)]

## Observational Study

Stasi C, Pacifici M, Milli C, Profili F, Silvestri C, Voller F. Prevalence and features of SARS-CoV-2 infection in prisons in Tuscany. *World J Exp Med* 2024; 14(1): 87551 [DOI: [10.5493/wjem.v14.i1.87551](https://doi.org/10.5493/wjem.v14.i1.87551)]

## Clinical and Translational Research

Garg G, Bharadwaj A, Chaudhary S, Gupta V. Chemical profiling of bioactive compounds in the methanolic extract of wild leaf and callus of *Vitex negundo* using gas chromatography-mass spectrometry. *World J Exp Med* 2024; 14(1): 88064 [DOI: [10.5493/wjem.v14.i1.88064](https://doi.org/10.5493/wjem.v14.i1.88064)]

**Basic Study**

**Lesser T, Wolfram F, Braun C, Gottschall R.** Effects of unilateral superimposed high-frequency jet ventilation on porcine hemodynamics and gas exchange during one-lung flooding. *World J Exp Med* 2024; 14(1): 87256 [DOI: [10.5493/wjem.v14.i1.87256](https://doi.org/10.5493/wjem.v14.i1.87256)]

**Medanki S, Dommati N, Bodapati HH, Katru VNSK, Moses G, Komaraju A, Donepudi NS, Yalamanchili D, Sateesh J, Turimerla P.** Artificial intelligence powered glucose monitoring and controlling system: Pumping module. *World J Exp Med* 2024; 14(1): 87916 [DOI: [10.5493/wjem.v14.i1.87916](https://doi.org/10.5493/wjem.v14.i1.87916)]

**Mohd Nasir S, Ismail AF, Tuan Ismail TS, Wan Abdul Rahman WF, Wan Ahmad WAN, Tengku Din TADAA, Sirajudeen KNS.** Hepatic and renal effects of oral stingless bee honey in a streptozotocin-induced diabetic rat model. *World J Exp Med* 2024; 14(1): 91271 [DOI: [10.5493/wjem.v14.i1.91271](https://doi.org/10.5493/wjem.v14.i1.91271)]

**ABOUT COVER**

Peer Reviewer of *World Journal of Experimental Medicine*, Ramya Badrachalam, MBBS, MD, Assistant Professor, Department of Biochemistry, Sri Manakula Vinayagar Medical College & Hospital, Puducherry 605107, India. drramya830@gmail.com

**AIMS AND SCOPE**

The primary aim of the *World Journal of Experimental Medicine* (WJEM, *World J Exp Med*) is to provide scholars and readers from various fields of experimental medicine with a platform to publish high-quality basic and clinical research articles and communicate their research findings online.

WJEM mainly publishes articles reporting research results and findings obtained in the field of experimental medicine and covering a wide range of topics including clinical laboratory medicine (applied and basic research in hematology, body fluid examination, cytomorphology, genetic diagnosis of hematological disorders, thrombosis and hemostasis, and blood typing and transfusion), biochemical examination (applied and basic research in laboratory automation and information system, biochemical methodology, and biochemical diagnostics), etc.

**INDEXING/ABSTRACTING**

The WJEM is now abstracted and indexed in PubMed, PubMed Central, Scopus, Reference Citation Analysis, China Science and Technology Journal Database, and Superstar Journals Database. The WJEM's CiteScore for 2022 is 1.0 and Scopus CiteScore rank 2022: Internal medicine is 106/140.

**RESPONSIBLE EDITORS FOR THIS ISSUE**

**Production Editor:** Ying-Yi Yuan; **Production Department Director:** Xu Guo; **Editorial Office Director:** Ji-Hong Lin.

**NAME OF JOURNAL**

*World Journal of Experimental Medicine*

**ISSN**

ISSN 2220-315x (online)

**LAUNCH DATE**

December 20, 2011

**FREQUENCY**

Quarterly

**EDITORS-IN-CHIEF**

Leonardo Roever, Jian Wu

**EXECUTIVE ASSOCIATE EDITORS-IN-CHIEF****EDITORIAL BOARD MEMBERS**

<https://www.wjgnet.com/2220-315x/editorialboard.htm>

**PUBLICATION DATE**

March 20, 2024

**COPYRIGHT**

© 2024 Baishideng Publishing Group Inc

**PUBLISHING PARTNER**

Department of Clinical Laboratory, The Affiliated Suzhou Hospital of Nanjing Medical University, Suzhou Municipal Hospital

**INSTRUCTIONS TO AUTHORS**

<https://www.wjgnet.com/bpg/gerinfo/204>

**GUIDELINES FOR ETHICS DOCUMENTS**

<https://www.wjgnet.com/bpg/gerinfo/287>

**GUIDELINES FOR NON-NATIVE SPEAKERS OF ENGLISH**

<https://www.wjgnet.com/bpg/gerinfo/240>

**PUBLICATION ETHICS**

<https://www.wjgnet.com/bpg/gerinfo/288>

**PUBLICATION MISCONDUCT**

<https://www.wjgnet.com/bpg/gerinfo/208>

Fang Gong, Ya-Jie Wang

**ARTICLE PROCESSING CHARGE**

<https://www.wjgnet.com/bpg/gerinfo/242>

**STEPS FOR SUBMITTING MANUSCRIPTS**

<https://www.wjgnet.com/bpg/gerinfo/239>

**ONLINE SUBMISSION**

<https://www.f6publishing.com>

**PUBLISHING PARTNER'S OFFICIAL WEBSITE**

<http://www.smh.cc/home2020/page/index/index.html>

## Future clinical prospects of C-peptide testing in the early diagnosis of gestational diabetes

Charalampos Milionis, Ioannis Ilias, Anastasia Lekkou, Evangelia Venaki, Eftychia Koukkou

**Specialty type:** Medicine, research and experimental

**Provenance and peer review:**

Invited article; Externally peer reviewed.

**Peer-review model:** Single blind

**Peer-review report's scientific quality classification**

Grade A (Excellent): A  
Grade B (Very good): 0  
Grade C (Good): C, C, C  
Grade D (Fair): 0  
Grade E (Poor): 0

**P-Reviewer:** Arumugam VA, India; Gong F, China; Wu J, China

**Received:** October 27, 2023

**Peer-review started:** October 27, 2023

**First decision:** November 30, 2023

**Revised:** December 11, 2023

**Accepted:** December 28, 2023

**Article in press:** December 28, 2023

**Published online:** March 20, 2024



**Charalampos Milionis, Ioannis Ilias, Anastasia Lekkou, Evangelia Venaki, Eftychia Koukkou,** Department of Endocrinology, Diabetes, and Metabolism, 'Elena Venizelou' General Hospital, Athens 11521, Greece

**Corresponding author:** Charalampos Milionis, MD, PhD, Consultant Physician-Scientist, Department of Endocrinology, Diabetes, and Metabolism, 'Elena Venizelou' General Hospital, Elena Venizelou Square 2, Athens 11521, Greece. [pesscharis@hotmail.com](mailto:pesscharis@hotmail.com)

### Abstract

Gestational diabetes is typically diagnosed in the late second or third trimester of pregnancy. It is one of the most common metabolic disorders among expectant mothers, with potential serious short- and long-term complications for both maternal and offspring health. C-peptide is secreted from pancreatic beta-cells into circulation in equimolar amounts with insulin. It is a useful biomarker to estimate the beta-cell function because it undergoes negligible hepatic clearance and consequently it has a longer half-life compared to insulin. Pregnancy induces increased insulin resistance due to physiological changes in hormonal and metabolic homeostasis. Inadequate compensation by islet beta-cells results in hyperglycemia. The standard oral glucose tolerance test at 24-28 wk of gestation sets the diagnosis. Accumulated evidence from prospective studies indicates a link between early pregnancy C-peptide levels and the risk of subsequent gestational diabetes. Elevated C-peptide levels and surrogate glycemic indices at the beginning of pregnancy could prompt appropriate strategies for secondary prevention.

**Key Words:** C-peptide; Gestational diabetes; Secondary prevention; Pregnancy; Clinical laboratory techniques

©The Author(s) 2024. Published by Baishideng Publishing Group Inc. All rights reserved.

**Core Tip:** Understanding the diagnostic role of C-peptide measurements in predicting hyperglycemia during pregnancy can facilitate timely interventions in clinical practice, potentially preventing gestational diabetes in a subset of predisposed women. Further research is necessary to confirm the utility of C-peptide testing in pregnancy and define the appropriate diagnostic thresholds.

**Citation:** Milionis C, Ilias I, Lekkou A, Venaki E, Koukkou E. Future clinical prospects of C-peptide testing in the early diagnosis of gestational diabetes. *World J Exp Med* 2024; 14(1): 89320

**URL:** <https://www.wjgnet.com/2220-315x/full/v14/i1/89320.htm>

**DOI:** <https://dx.doi.org/10.5493/wjem.v14.i1.89320>

## INTRODUCTION

Gestational diabetes (GD) presents a mounting global public health challenge, with its prevalence varying from 7.1% to 27.6% across different International Diabetes Federation regions[1]. Its epidemiological pattern parallels that of type 2 diabetes mellitus (T2DM) in the same ethnic groups[2]. Typically emerging in the late second or third trimester, GD heightens the risk of various adverse maternal and fetal effects. Moreover, women with a history of GD face an elevated susceptibility to developing T2DM later in life. However, this relative risk is considerably variable and hinges on factors like the amount of time after delivery, ethnicity, age, body mass index, family history of diabetes, and previous affected pregnancies[3].

Maintaining optimal blood sugar levels is crucial to managing pregnant women with GD. Identifying early those at risk of dysglycemia during pregnancy is challenging because it can enable timelier interventions and, in turn, foster more effective glycemic control. Early diagnosis and treatment of GD can lead to improved maternal metabolic profiles and the creation of favorable intrauterine conditions for fetal development. Managing dysglycemia before the 20<sup>th</sup> week of pregnancy may contribute to a decreased incidence of a composite of adverse neonatal outcomes[4].

GD can be regarded as a pre-gravid subclinical glycemic dysregulation unmasked in late gestation[5]. Presently, blood glucose, insulin, and occasionally triglycerides are widely used in clinical practice to determine insulin resistance through the calculation of various indices[6]. However, these methods suffer from significant variability in defining appropriate threshold levels, making it challenging to estimate optimal cut-off points[7]. Given the specific physiological conditions of pregnancy, diagnosing glucose intolerance in pregnant women typically relies on blood glucose measurements in the fasting state and after glucose load.

Accurate identification of GD is of paramount significance. The standard approach involves an oral glucose tolerance test (OGTT) in the late second or early third trimester. Still, various physiological factors, including previous physical activity, preparatory diet, fasting duration, rate of intestinal glucose absorption, hydration status, and stress, can influence the glycemic response to oral glucose load. Moreover, technical inadequacies such as errors in sample handling and a lack of analytical standardization can compromise the reliability of this test[8]. It is also worth noting that postprandial blood sugar measurements in pregnant women only detect a manifested disturbance of glucose metabolism. Consequently, exploring the use of other biochemical markers that are more accurate and timelier in revealing dysglycemia during pregnancy is essential.

In contrast, C-peptide measurement has rarely been employed for diagnostic purposes in assessing insulin resistance. Using C-peptide as a biochemical marker is promising. Yet, its current role is limited to differentiating between type 1 diabetes mellitus (T1DM) and T2DM in cases of ambiguous hyperglycemia, as well as in the differential diagnosis of hypoglycemia. However, C-peptide testing could be instrumental in several other facets of diabetes care, including estimating the progression of insulin resistance (and deficiency), predicting the onset of T2DM, and evaluating the risk of diabetic complications. This review particularly focuses on the potential utilization of C-peptide testing in early pregnancy to assess the risk of GD. It also analyzes the rationale for the practical integration of C-peptide testing in the clinical setting for this purpose.

## METHODOLOGY

With the aim of providing an overview of the use of C-peptide determination in the early diagnosis of GD, a search in the database of PubMed was performed between October and November 2023. It used the terms 'C-peptide', 'gestational diabetes', 'early diagnosis', and 'biomarkers' in all possible combinations. Table 1 shows the relevant literature search. The selected articles included studies that explored novel clinical applications of C-peptide testing with a special focus on pregnancy. For a better understanding of the relevant physiology, review papers that explained the applicability of C-peptide measurements, analyzed aspects of insulin synthesis and secretion, or described the nosological entity of GD were also used after a targeted literature search.

A narrative review can be defined as a thorough report of a body of literature that also includes interpretation and critique[9]. This method lacks cumbersome restrictions, which makes it suitable for the in-depth analysis of a particular topic, especially when existing data are incomplete[10]. The utility of C-peptide measurements in pregnancy has been researched sparingly. Hence, this article used a narrative approach to summarize the existing evidence on the underlying physiology of glucose homeostasis, elaborate on the importance of early diagnosis of dysglycemia, and speculate on possible preventive strategies. Although a narrative review may suffer from data selection bias, a purposeful search of the literature can mitigate this disadvantage and allow for a comprehensive investigation of the desired topic.



**Table 1 Search details in PubMed**

Query	Results
Search: ((gestational diabetes) AND (early diagnosis)) AND (biomarkers)	344
Search: ((C-peptide) AND (early diagnosis)) AND (biomarkers)	96
Search: ((C-peptide) AND (gestational diabetes)) AND (biomarkers)	64
Search: ((C-peptide) AND (gestational diabetes)) AND (early diagnosis)	32
Search: (((C-peptide) AND (gestational diabetes)) AND (early diagnosis)) AND (biomarkers)	9

## PHYSIOLOGY OF INSULIN SYNTHESIS AND SECRETION-BIOLOGICAL ACTION OF C-PEPTIDE

Insulin, a peptide hormone, is produced through the classical process of protein synthesis. The human insulin gene is located on the short arm of chromosome 11. It is transcribed into preproinsulin mRNA in the nucleus of pancreatic beta-cells in the islets of Langerhans. This mRNA is transferred to the cytoplasm, where it is translated into a 110-amino-acid precursor peptide (preproinsulin) in the rough endoplasmic reticulum. Preproinsulin is cleaved to proinsulin with the removal of the signal peptide almost immediately after synthesis. Proinsulin is a single 86-amino-acid chain containing the A and B chains of insulin (with 21 and 30 amino acids, respectively) and a 35-residue connecting segment (the C-peptide and four intervening amino acids). As proinsulin folds, the A and B chains form three disulfide bonds (two bridges between the A and B chains and an intra-chain bridge within the A chain). Proinsulin is then packaged into clathrin-coated secretory vesicles in the Golgi apparatus. Loss of the clathrin coating and conversion of proinsulin into insulin indicate maturation for exocytosis[11,12]. **Figure 1** represents the process of insulin synthesis and secretion by the pancreatic beta-cell.

C-peptide, consisting of 31 amino acids, initially links the A and B chains of insulin within proinsulin, aiding correct protein folding and disulfide bond formation. In the Golgi apparatus, proinsulin is cleaved at two sites along the peptide chain through prohormone convertases 1 and 2, with carboxypeptidase E removing two pairs of amino acids from the protein's ends. This process yields equimolar quantities of C-peptide and active insulin stored together in secretory vesicles in the cytoplasm of pancreatic beta-cells. Glucose and other secretagogues (leucine, arginine, acetylcholine, incretins, and vagal nerve stimulation) stimulate the co-release of both insulin and C-peptide into the bloodstream. Mature secretory vesicles might contain small amounts of proinsulin or partially split products that evade cleavage[11, 12]. **Figure 2** depicts the molecular structure of proinsulin.

Following secretion, insulin and C-peptide are routed through the portal circulation into the liver, where half of the pancreatic insulin undergoes first-pass hepatic clearance. Insulin is also metabolized in the kidney and the placenta. In contrast, C-peptide is only limitedly processed in the liver. It is primarily metabolized in the kidney, with a small fraction excreted unchanged in the urine (5%-10%). Consequently, the half-life of C-peptide is around 30 min, roughly ten times longer than that of endogenous insulin (approximately 3 min). Moreover, the molar ratio of insulin to C-peptide in peripheral circulation is less than 1. The stability of C-peptide in the bloodstream supports its clinical utility as a reliable marker of islet beta-cell function[13].

Besides its contribution to insulin structure, the exact biological actions of C-peptide in normal physiology remain only partially understood[14]. Available data indicate that C-peptide may bind to the cell membrane, possibly *via* a surface receptor coupled with a G-protein. Then, the latter triggers a signaling cascade that results in several effects, including elevation in the concentration of intracellular calcium, activation of the sodium-potassium adenosine triphosphatase (Na<sup>+</sup>-K<sup>+</sup>-ATPase), increased transcription of endothelial nitric oxide synthetase, stimulation of phosphoinositide 3-kinase, and activation of mitogen-activated protein kinases pathways, in multiple cell types from various tissues[15,16]. Non-receptor-mediated mechanisms of the C-peptide's biological action have also been implied.

C-peptide likely exerts anti-inflammatory, anti-apoptotic, vasodilatory, and antioxidant effects in the vascular endothelium, either directly or through interactions with erythrocytes and immune cells. It may also participate in fine-tuning insulin signaling[17]. However, further research is necessary to confirm these presumptive functions, as well as their physiological role and clinical significance.

## PATHOPHYSIOLOGY, DIAGNOSIS, AND CLINICAL IMPLICATIONS OF GESTATIONAL DIABETES

In pregnant women, hormonal and metabolic changes significantly influence carbohydrate metabolism, adapting to the nutritional demands of the growing fetus. The flow of glucose from maternal to fetal circulation relies on the gradient across the blood-placental barrier. Placental and other hormones (progesterone, estrogen, placental lactogen, leptin, cortisol, and growth hormone) induce insulin resistance, maintaining adequate maternal plasma glucose levels and ensuring unmarred glucose flow to the fetus. Heightened lipolysis in the adipose tissue of pregnant women favors fatty acid utilization by maternal tissues, increasing glucose availability for the fetus[18,19]. Changes in cytokine and adipokine production, circulating exosomes (both total and placenta-derived), and alterations in the gut microbiota might also contribute to increased insulin resistance during pregnancy[20]. Compensatory mechanisms involve expansion, proliferation, and possibly neogenesis of pancreatic beta-cells, leading to a two- to three-fold rise in insulin production[21,22].

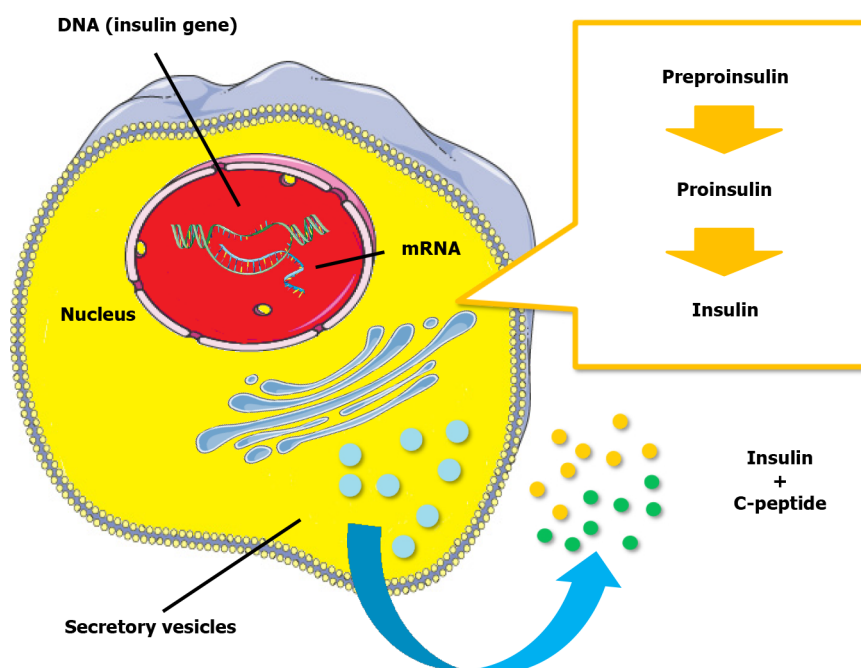


Figure 1 Insulin synthesis and secretion by the pancreatic beta-cell.

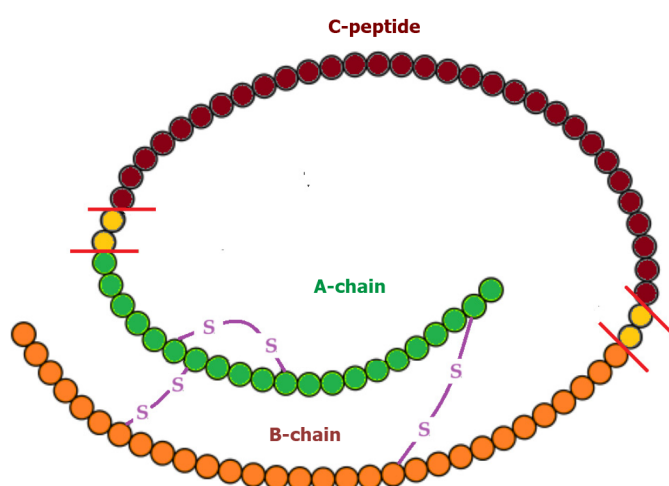


Figure 2 The molecule of proinsulin with its components.

Maternal insulin sensitivity returns to pre-pregnancy levels shortly after parturition.

GD manifests as pregnancy-related hyperglycemia resulting from insufficient pancreatic insulin secretion against heightened blood glucose levels due to the hormonal and metabolic homeostasis of pregnancy. It often arises from an underlying predisposition to beta-cell dysfunction in the presence of latent insulin resistance. Hormonal and metabolic changes during pregnancy exacerbate this state. Defects may occur at any stage of beta-cell function, including glucose sensing, proinsulin synthesis, post-translational modifications, and vesicle storage and exocytosis. Insulin resistance arises from disruptions in various phases of insulin signaling. As insulin resistance peaks in the third trimester, hyperglycemia typically becomes apparent around this time[18,19].

Early screening before the 15<sup>th</sup> week of gestation is crucial, especially for women with risk factors, to identify undiagnosed preexisting diabetes. Risk factors include advanced age, excessive weight, specific ethnicities (Indian, Southeast Asian, Arab, Mediterranean, Afro-Caribbean), family history of T2DM, previous macrosomic neonate delivery, and polycystic ovarian syndrome[23]. The gold-standard diagnostic approach is the OGTT at 24-28 wk, with different hyperglycemia thresholds indicating varying degrees of complication risk[24]. Adverse outcomes associated with GD include preeclampsia, preterm delivery, need for cesarean section, shoulder dystocia, neonatal hypoglycemia, neonatal jaundice, and increased birth weight[25].

Pre-pregnancy lifestyle modifications (exercise and diet) may serve as primary prevention against GD[26]. Similar interventions in early gestation might prevent subsequent GD in high-risk individuals[27,28]. Nonetheless, no widely accepted strategy currently exists for secondary prevention (after conception) in the general pregnant population. An



ideal diagnostic tool capable of detecting the condition prior to the onset of overt hyperglycemia, possibly in the first trimester, could enable timely interventions before adverse metabolic effects act on the fetus. Proper management of GD, including dietary plans, behavioral adjustments, and, if necessary, insulin therapy, can improve perinatal outcomes (tertiary prevention)[29]. **Figure 3** outlines the timeline for potential diagnostic and therapeutic interventions in GD.

## MEASUREMENT OF C-PEPTIDE – METHODS AND CLINICAL APPLICATIONS

C-peptide testing serves as an important laboratory tool for evaluating pancreatic beta-cell function and finding application as a biochemical marker for insulin secretion assessment in clinical settings. It is preferred over insulin measurements in some instances owing to its slower degradation rate, which provides a broader time window to evaluate fluctuating beta-cell function. C-peptide is less affected by hemolysis, and its determination has a well-established standardization process[30]. Additionally, its measurement avoids the risk of cross-reactivity of immunoassays between endogenous and synthetic insulin[31].

Estimating C-peptide involves basal, random, and stimulated blood measurements. Fasting blood samples are obtained after an 8-10-h overnight fast, whereas random blood specimens can be drawn at any time during the day regardless of the last mealtime. Both of these approaches are simple and flexible and can be performed in an outpatient or inpatient setting. However, fasting C-peptide values might not capture subtle postprandial fluctuations. In addition, random C-peptide levels often require confirmation with stimulation methods. The latter include measurements at specific time intervals after glucose intake, glucagon administration, or a mixed meal[32]. Stimulation tests should be conducted primarily in diagnostically challenging cases, considering the potential inconveniences for both patients and personnel. C-peptide is prone to enzymatic proteolytic cleavage in serum gel or plain sample tubes but remains stable in whole blood specimens in ethylenediaminetetraacetic acid-prepared tubes for up to 24 h at room temperature[33].

Normal plasma C-peptide concentration in the fasting state ranges around 0.9-1.8 ng/mL, rising to 3-9 ng/mL postprandially in non-diabetic, non-obese individuals[34]. Elevated C-peptide blood levels may indicate insulin resistance, insulinoma, or kidney disease, whereas low concentrations are typical in T1DM or sometimes in T2DM.

Urinary C-peptide testing is a non-invasive procedure. It involves collecting samples in boric acid, which maintains C-peptide stability for up to 3 d at room temperature. In individuals with normal urinary function, the urinary C-peptide quantity represents 5%-10% of the total secretion by the pancreas. While 24-h urine collection provides a relatively accurate estimation of pancreatic secretion over an extended period, it can be time-consuming and inconvenient for the patient. The determination of spot urinary C-peptide concentration is less reliable because of the variability in the beta-cell secretory activity over the day. Nevertheless, the C-peptide to creatinine ratio in a spot sample correlates well with 24-h collection values, making it an attractive option for estimating islet beta-cell function. Gender differences should be considered due to variations in urinary creatinine levels between men and women[32].

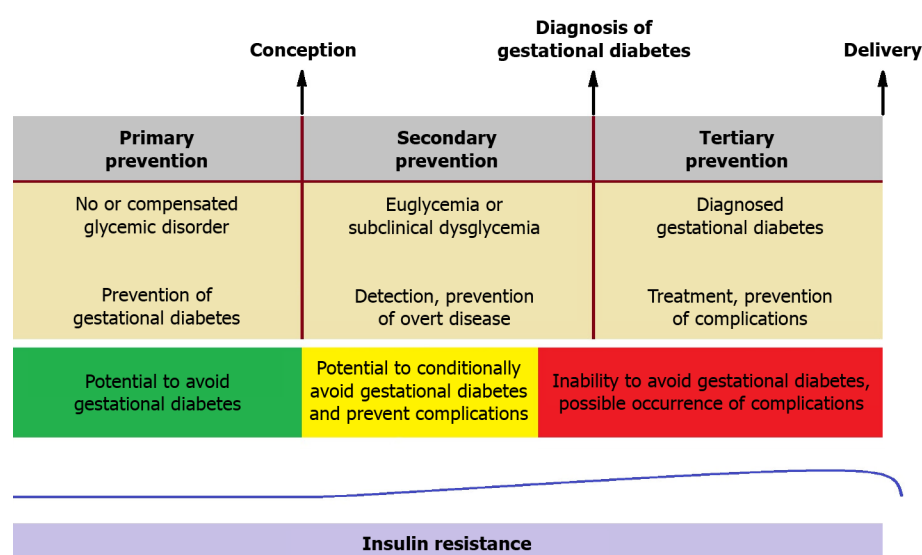
C-peptide measurement is a key element in the differential diagnosis of hypoglycemia. When hypoglycemic episodes are confirmed, evaluating C-peptide blood concentration is essential. Low C-peptide levels alongside high insulin levels suggest factitious hypoglycemia due to excessive exogenous insulin administration. Elevated C-peptide levels in the presence of high insulin concentration should prompt consideration of stimulating insulin autoantibodies, insulinoma, or intoxication with insulin secretagogues (sulfonylureas or meglitinides)[35]. Furthermore, C-peptide is valuable for assessing insulin secretory reserve in patients with diabetes. In T1DM, C-peptide values decline rapidly during the initial 3-5 years since onset, with concentrations lower than 0.4 ng/mL indicative of pancreatic beta-cell failure and insulin deficiency[36].

There are some pitfalls associated with C-peptide testing. Its measurement in patients with chronic kidney failure is problematic due to the compromised renal metabolism. Cross-reactions with proinsulin and its partially processed forms, including C-peptide fragments, may lead to an overestimation of C-peptide concentration. High levels of antibodies binding to proinsulin or C-peptide can also yield falsely elevated readings with indirect immunoassays. While modern assays demonstrate high accuracy in quantifying blood C-peptide[37], awareness of the applied laboratory method remains crucial.

## POTENTIAL FUTURE USES OF C-PEPTIDE TESTING IN PREDICTING GESTATIONAL DIABETES

The escalating incidence of GD presents a growing global health challenge due to its potentially severe implications for both the mother and the offspring. Consequently, strategies for prevention, early identification, and optimal treatment are of utmost importance. As previously highlighted, the emergence of GD often results from an underlying deficit of islet beta-cells within a setting of pregnancy-induced insulin resistance. Thus, the early assessment of pancreatic beta-cell function, if feasible, holds significant promise for predicting the onset of this metabolic dysregulation. While the idea of employing C-peptide testing to evaluate insulin secretory capacity in pregnant women is appealing, it has not yet been extensively trialed in routine clinical practice. The theoretical advantage of C-peptide assessment, compared to the OGTT, lies in the potential for an earlier diagnosis (secondary prevention) of a pregnant woman's predisposition to developing GD. This early assessment could allow for tailored interventions before the onset of glycemic dysregulation.

C-peptide can be readily measured in the serum of pregnant women, both in the fasting state and after stimulation. Given that glucose serves as the primary stimulus for endogenous insulin secretion, adjusting C-peptide levels based on blood sugar values using appropriate indices appears reasonable. Evaluating pancreatic beta-cell function through overnight fasting serum samples is readily comparable both within an individual over time and among different



**Figure 3** The different stages of prevention in treating gestational diabetes and the development of insulin resistance during pregnancy.

Primary prevention can only be sought before conception. Secondary prevention is feasible during the period from conception to around the 20<sup>th</sup> week of gestation, after which prevention of hyperglycemia is not possible and only complications can be potentially avoided; There is a substantial increase in insulin resistance from gestational week 15 until week 35. Then, it remains stable (or slightly decreases) until delivery and returns to the pre-pregnancy state a few days after parturition.

individuals, as basal insulin secretion remains relatively stable during fasting periods. However, post-stimulation examination reveals the maximum insulin secretory capacity of islet beta-cells, especially in the presence of insulin resistance. Hence, calculating the C-peptide (in ng/mL) to glucose (in mg/dL) ratio (multiplied by 100) in both fasting and post-stimulation serum samples could serve as a well-fitted marker for determining declining insulin secretion[38]. This approach holds promise for identifying pregnant women at high risk of developing GD early in their pregnancy.

Examining C-peptide levels in the urine represents a potentially attractive method for estimating islet beta-cell preserved function. While a substantial correlation exists between 24-h urinary excretion quantity and serum concentration, inter- and intra-personal differences in renal C-peptide clearance must be considered. Of course, collecting a 24-h urine sample can pose practical challenges. Correcting urinary C-peptide concentration for the respective creatinine levels facilitates the use of spot specimens in daily practice, albeit with presumably lower diagnostic accuracy[39]. Assessing C-peptide values in the urine during the initial weeks of gestation could serve as an alternative or complementary tool for evaluating the risk of subsequent hyperglycemia, with the necessary consideration of renal hemodynamic changes in pregnancy.

## DISCUSSION

Recent efforts have concentrated on the early detection and management of glycemic dysregulation during pregnancy [40]. A large number of first-trimester biochemical markers have been tested for this purpose. These include glycemic, metabolic, inflammatory, hormonal, adipocyte-derived, and other molecules. Some of them may be useful for identifying women at high risk of developing GD. To apply the relevant findings in practice, further clinical trials as well as cost-effectiveness analyses of the use of these novel biomarkers are needed[41].

The potential integration of C-peptide testing for the early diagnosis of GD could prove to be a vital screening strategy. While current guidelines do not endorse its use for diagnosis during pregnancy, the future application of C-peptide measurement may hold promise for detecting abnormal glycemic homeostasis before the clinical manifestation of GD. This review offers valuable insights into the correlation between C-peptide levels and the progression of glucose intolerance in pregnancy. In this perspective, C-peptide testing could serve as a springboard for secondary prevention interventions during the period after conception but before the onset of frank hyperglycemia.

Pregnancy can be regarded as a stressful state that challenges a woman's glycemic regulatory reserves. Physiological insulin resistance during pregnancy leads to adaptive changes in pancreatic beta-cell function, including increased insulin synthesis, heightened glucose-stimulated insulin secretion, elevated levels of glucokinase and glucose transporters (Glut-2 and Glut-5), increased glucose metabolism, and enhanced expression of soluble N-ethylmaleimide-sensitive factor attachment protein receptor proteins[42]. Failure of these cellular processes to adapt to the insulin demands of pregnancy results in disrupted glucose homeostasis. The OGTT conducted between 24 and 28 wk of pregnancy primarily serves tertiary prevention since the diagnosis of GD with this method is only established after the occurrence of hyperglycemia. Thus, the search for predictive biomarkers for secondary prevention that could potentially prevent hyperglycemia and subsequent complications at an earlier stage becomes imperative.

In the absence of pre-pregnancy hyperglycemia, current guidelines recommend diagnosing GD in the late second or early third trimester. Detecting and treating the disorder at this stage can have significant positive effects, albeit in a

relatively small proportion of cases[25]. Therefore, it is significant to identify biomarkers that can assist in the prediction of GD at an earlier phase, primarily in the first trimester, triggering appropriate monitoring and treatment. Ideally, candidate laboratory tests for this purpose should be relatively affordable, readily available, automated, and minimally invasive[43].

GD is nowadays considered to be part of a progressive metabolic dysfunction that predates conception. A chronic beta-cell defect leads to elevated glycemia during pregnancy. Inadequate compensatory pancreatic secretion in the face of insulin resistance during the latter half of gestation results in hyperglycemia, which characterizes GD[42]. Assessing C-peptide concentration in the serum (or in the urine) and calculating relevant mathematical indices offers an optimal means of evaluating the amount of insulin secretion and sensitivity. Existing evidence suggests that elevated fasting C-peptide levels in early pregnancy are associated with a higher risk of subsequent GD, independently of factors such as maternal age, family history of diabetes, pre-pregnancy body weight, and parity[44-48]. Thus, the evaluation of C-peptide values, possibly in combination with other biochemical parameters, can potentially identify early glycemic disturbances from the initial weeks of pregnancy. Early diagnosis expands the time frame for targeted interventions that may prevent the onset of GD. However, further basic and clinical tests are required to validate these assumptions and determine the precise diagnostic cut-offs.

The pursuit of developing screening tests capable of detecting a disorder before the development of symptoms or at a stage when treatment is potentially more effective remains a longstanding goal in research and clinical practice. Managing GD is no exception to this objective. Following the Hyperglycemia and Adverse Pregnancy Outcome (HAPO) study, which demonstrated a relationship between glucose levels after oral glucose load and adverse pregnancy outcomes[49], the OGTT at the late stages of pregnancy has become a cornerstone of diagnosis. However, advanced age, increased body weight, and family or personal history of GD may conditionate this approach. In addition, an earlier and more specific detection could improve glycemic progression and maternal and neonatal outcomes[50]. Novel indices that incorporate fasting and stimulated C-peptide values could be employed to assess glucose homeostasis and stratify the risk of hyperglycemia earlier in pregnancy[51]. Identifying appropriate biomarkers is an important milestone for designing effective prevention strategies and enhancing the health and well-being of both mothers and offspring. Prospective studies should be conducted to determine whether early interventions, such as lifestyle modifications, in the first trimester can impact the development of GD, the necessity for medical treatment, and perinatal outcomes.

## CONCLUSION

GD is a common complication of pregnancy, with a rising incidence. Its consequences are far-reaching, associated with short-term adverse maternal and neonatal outcomes and long-term metabolic implications for both the mother and offspring. Biomarkers to identify women susceptible to the development of GD are useful to target prevention and prompt treatment. Unfortunately, the already well-known clinical risk factors lack specificity, while the OGTT offers a rather late diagnosis. The addition of novel biomarkers to predictive strategies for gestational diabetes may improve clinicians' ability to identify pregnant women at risk of hyperglycemia prior to its development. This review concluded that the use of C-peptide as a biomarker is based on the comprehension of the pathophysiologic mechanisms of insulin resistance during gestation, and hence, it may provide further aid in the prediction of the relevant risk. However, the present article is a narrative review. As such, it has inherent flaws because of non-completely standardized methods of literature search, potential bias in the appraisal of retrieved data, and subjectivity in the interpretation of findings. Further research is certainly needed to validate C-peptide testing as a diagnostic tool in pregnancy.

## FOOTNOTES

**Author contributions:** Milionis C conceived the subject of the paper, prepared and revised the text, and approved the final version of the article; Ilias I and Lekkou A provided feedback on the content of the paper, made amendments to the text, and approved the final version of the article; Koukkou E and Venaki E supervised the writing of the paper, guided the revisions, and approved the final version of the article.

**Conflict-of-interest statement:** All the authors report no relevant conflicts of interest for this article.

**Open-Access:** This article is an open-access article that was selected by an in-house editor and fully peer-reviewed by external reviewers. It is distributed in accordance with the Creative Commons Attribution NonCommercial (CC BY-NC 4.0) license, which permits others to distribute, remix, adapt, build upon this work non-commercially, and license their derivative works on different terms, provided the original work is properly cited and the use is non-commercial. See: <https://creativecommons.org/licenses/by-nc/4.0/>

**Country/Territory of origin:** Greece

**ORCID number:** Charalampos Milionis 0000-0003-2442-3772; Ioannis Ilias 0000-0001-5718-7441; Evangelia Venaki 0000-0001-8942-2039; Eftychia Koukkou 0000-0002-1433-3151.

**S-Editor:** Li L

**L-Editor:** A

## REFERENCES

- 1 Wang H, Li N, Chivese T, Werfalli M, Sun H, Yuen L, Hoegfeldt CA, Elise Powe C, Immanuel J, Karuranga S, Divakar H, Levitt N, Li C, Simmons D, Yang X; IDF Diabetes Atlas Committee Hyperglycaemia in Pregnancy Special Interest Group. IDF Diabetes Atlas: Estimation of Global and Regional Gestational Diabetes Mellitus Prevalence for 2021 by International Association of Diabetes in Pregnancy Study Group's Criteria. *Diabetes Res Clin Pract* 2022; **183**: 109050 [PMID: 34883186 DOI: 10.1016/j.diabres.2021.109050]
- 2 Ben-Haroush A, Yogeve Y, Hod M. Epidemiology of gestational diabetes mellitus and its association with Type 2 diabetes. *Diabet Med* 2004; **21**: 103-113 [PMID: 14984444 DOI: 10.1046/j.1464-5491.2003.00985.x]
- 3 Dennison RA, Chen ES, Green ME, Legard C, Kotecha D, Farmer G, Sharp SJ, Ward RJ, Usher-Smith JA, Griffin SJ. The absolute and relative risk of type 2 diabetes after gestational diabetes: A systematic review and meta-analysis of 129 studies. *Diabetes Res Clin Pract* 2021; **171**: 108625 [PMID: 33333204 DOI: 10.1016/j.diabres.2020.108625]
- 4 Simmons D, Immanuel J, Hague WM, Teede H, Nolan CJ, Peek MJ, Flack JR, McLean M, Wong V, Hibbert E, Kautzky-Willer A, Harreiter J, Backman H, Gianatti E, Sweeting A, Mohan V, Enticott J, Cheung NW; TOBOGM Research Group. Treatment of Gestational Diabetes Mellitus Diagnosed Early in Pregnancy. *N Engl J Med* 2023; **388**: 2132-2144 [PMID: 37144983 DOI: 10.1056/NEJMoa2214956]
- 5 Catalano PM. Trying to understand gestational diabetes. *Diabet Med* 2014; **31**: 273-281 [PMID: 24341419 DOI: 10.1111/dme.12381]
- 6 Gutch M, Kumar S, Razi SM, Gupta KK, Gupta A. Assessment of insulin sensitivity/resistance. *Indian J Endocrinol Metab* 2015; **19**: 160-164 [PMID: 25593845 DOI: 10.4103/2230-8210.146874]
- 7 Tahapary DL, Pratisthita LB, Fitri NA, Marcella C, Wafa S, Kurniawan F, Rizka A, Tarigan TJE, Harbuwono DS, Purnamasari D, Soewondo P. Challenges in the diagnosis of insulin resistance: Focusing on the role of HOMA-IR and Tryglyceride/glucose index. *Diabetes Metab Syndr* 2022; **16**: 102581 [PMID: 35939943 DOI: 10.1016/j.dsx.2022.102581]
- 8 Bogdanet D, O'Shea P, Lyons C, Shafat A, Dunne F. The Oral Glucose Tolerance Test-Is It Time for a Change?-A Literature Review with an Emphasis on Pregnancy. *J Clin Med* 2020; **9** [PMID: 33121014 DOI: 10.3390/jcm9113451]
- 9 Greenhalgh T, Thorne S, Malterud K. Time to challenge the spurious hierarchy of systematic over narrative reviews? *Eur J Clin Invest* 2018; **48**: e12931 [PMID: 29578574 DOI: 10.1111/eci.12931]
- 10 Furley P, Goldschmied N. Systematic vs. Narrative Reviews in Sport and Exercise Psychology: Is Either Approach Superior to the Other? *Front Psychol* 2021; **12**: 685082 [PMID: 34305741 DOI: 10.3389/fpsyg.2021.685082]
- 11 Maddaloni E, Bolli GB, Frier BM, Little RR, Leslie RD, Pozzilli P, Buzzetti R. C-peptide determination in the diagnosis of type of diabetes and its management: A clinical perspective. *Diabetes Obes Metab* 2022; **24**: 1912-1926 [PMID: 35676794 DOI: 10.1111/dom.14785]
- 12 Novac C, Radulian G, Orzan A, Balgradean M. Short Update on C-Peptide and its Clinical Value. *Maedica (Bucur)* 2019; **14**: 53-58 [PMID: 31123514 DOI: 10.26574/maedica.2019.14.1.53]
- 13 Vejrazkova D, Vankova M, Lukasova P, Vcelak J, Bendlova B. Insights into the physiology of C-peptide. *Physiol Res* 2020; **69**: S237-S243 [PMID: 33094622 DOI: 10.33549/physiolres.934519]
- 14 Landreh M, Jörnvall H. Biological activity vs physiological function of proinsulin C-peptide. *Cell Mol Life Sci* 2021; **78**: 1131-1138 [PMID: 32959070 DOI: 10.1007/s00018-020-03636-2]
- 15 Wahren J, Larsson C. C-peptide: new findings and therapeutic possibilities. *Diabetes Res Clin Pract* 2015; **107**: 309-319 [PMID: 25648391 DOI: 10.1016/j.diabres.2015.01.016]
- 16 Hills CE, Brunskill NJ. Intracellular signalling by C-peptide. *Exp Diabetes Res* 2008; **2008**: 635158 [PMID: 18382618 DOI: 10.1155/2008/635158]
- 17 Yosten GL, Kolar GR. The Physiology of Proinsulin C-Peptide: Unanswered Questions and a Proposed Model. *Physiology (Bethesda)* 2015; **30**: 327-332 [PMID: 26136546 DOI: 10.1152/physiol.00008.2015]
- 18 Sharma AK, Singh S, Singh H, Mahajan D, Kolli P, Mandadapu G, Kumar B, Kumar D, Kumar S, Jena MK. Deep Insight of the Pathophysiology of Gestational Diabetes Mellitus. *Cells* 2022; **11** [PMID: 36078079 DOI: 10.3390/cells11172672]
- 19 Plows JF, Stanley JL, Baker PN, Reynolds CM, Vickers MH. The Pathophysiology of Gestational Diabetes Mellitus. *Int J Mol Sci* 2018; **19** [PMID: 30373146 DOI: 10.3390/ijms19113342]
- 20 Kampmann U, Knorr S, Fuglsang J, Ovesen P. Determinants of Maternal Insulin Resistance during Pregnancy: An Updated Overview. *J Diabetes Res* 2019; **2019**: 5320156 [PMID: 31828161 DOI: 10.1155/2019/5320156]
- 21 Egan AM, Dow ML, Vella A. A Review of the Pathophysiology and Management of Diabetes in Pregnancy. *Mayo Clin Proc* 2020; **95**: 2734-2746 [PMID: 32736942 DOI: 10.1016/j.mayocp.2020.02.019]
- 22 Moyce BL, Dolinsky VW. Maternal  $\beta$ -Cell Adaptations in Pregnancy and Placental Signalling: Implications for Gestational Diabetes. *Int J Mol Sci* 2018; **19** [PMID: 30400566 DOI: 10.3390/ijms19113467]
- 23 Rodrigo N, Glastras SJ. The Emerging Role of Biomarkers in the Diagnosis of Gestational Diabetes Mellitus. *J Clin Med* 2018; **7** [PMID: 29882903 DOI: 10.3390/jcm7060120]
- 24 ElSayed NA, Aleppo G, Aroda VR, Bannuru RR, Brown FM, Bruemmer D, Collins BS, Hilliard ME, Isaacs D, Johnson EL, Kahan S, Khunti K, Leon J, Lyons SK, Perry ML, Prahalad P, Pratley RE, Seley JJ, Stanton RC, Gabbay RA; on behalf of the American Diabetes Association. 2. Classification and Diagnosis of Diabetes: Standards of Care in Diabetes-2023. *Diabetes Care* 2023; **46**: S19-S40 [PMID: 36507649 DOI: 10.2337/dc23-S002]
- 25 Buchanan TA, Xiang AH, Page KA. Gestational diabetes mellitus: risks and management during and after pregnancy. *Nat Rev Endocrinol* 2012; **8**: 639-649 [PMID: 22751341 DOI: 10.1038/nrendo.2012.96]
- 26 Zhang C, Tobias DK, Chavarro JE, Bao W, Wang D, Ley SH, Hu FB. Adherence to healthy lifestyle and risk of gestational diabetes mellitus: prospective cohort study. *BMJ* 2014; **349**: g5450 [PMID: 25269649 DOI: 10.1136/bmj.g5450]
- 27 Sadiya A, Jakapure V, Shaar G, Adnan R, Tesfa Y. Lifestyle intervention in early pregnancy can prevent gestational diabetes in high-risk pregnant women in the UAE: a randomized controlled trial. *BMC Pregnancy Childbirth* 2022; **22**: 668 [PMID: 36042401 DOI: 10.1186/s12884-022-04972-w]



- 28 **Koivusalo SB**, Rönö K, Klemetti MM, Roine RP, Lindström J, Erkkola M, Kaaja RJ, Pöyhönen-Alho M, Tiitinen A, Huvinen E, Andersson S, Laivuori H, Valkama A, Meinilä J, Kautiainen H, Eriksson JG, Stach-Lempinen B. Gestational Diabetes Mellitus Can Be Prevented by Lifestyle Intervention: The Finnish Gestational Diabetes Prevention Study (RADIEL): A Randomized Controlled Trial. *Diabetes Care* 2016; **39**: 24-30 [PMID: 26223239 DOI: 10.2337/dc15-0511]
- 29 **ElSayed NA**, Aleppo G, Aroda VR, Bannuru RR, Brown FM, Bruemmer D, Collins BS, Hilliard ME, Isaacs D, Johnson EL, Kahan S, Khunti K, Leon J, Lyons SK, Perry ML, Prahalad P, Pratley RE, Jeffrie Seley J, Stanton RC, Gabbay RA; on behalf of the American Diabetes Association. 15. Management of Diabetes in Pregnancy: Standards of Care in Diabetes-2023. *Diabetes Care* 2023; **46**: S254-S266 [PMID: 36507645 DOI: 10.2337/dc23-S015]
- 30 **Hörber S**, Achenbach P, Schleicher E, Peter A. Harmonization of immunoassays for biomarkers in diabetes mellitus. *Biotechnol Adv* 2020; **39**: 107359 [PMID: 30802485 DOI: 10.1016/j.biotechadv.2019.02.015]
- 31 **Ghazal K**, Brabant S, Prie D, Piketty ML. Hormone Immunoassay Interference: A 2021 Update. *Ann Lab Med* 2022; **42**: 3-23 [PMID: 34374345 DOI: 10.3343/alm.2022.42.1.3]
- 32 **Leighton E**, Sainsbury CA, Jones GC. A Practical Review of C-Peptide Testing in Diabetes. *Diabetes Ther* 2017; **8**: 475-487 [PMID: 28484968 DOI: 10.1007/s13300-017-0265-4]
- 33 **McDonald TJ**, Perry MH, Peake RW, Pullan NJ, O'Connor J, Shields BM, Knight BA, Hattersley AT. EDTA improves stability of whole blood C-peptide and insulin to over 24 h at room temperature. *PLoS One* 2012; **7**: e42084 [PMID: 22860060 DOI: 10.1371/journal.pone.0042084]
- 34 **Yosten GL**, Maric-Bilkan C, Luppi P, Wahren J. Physiological effects and therapeutic potential of proinsulin C-peptide. *Am J Physiol Endocrinol Metab* 2014; **307**: E955-E968 [PMID: 25249503 DOI: 10.1152/ajpendo.00130.2014]
- 35 **Wong SL**, Priestman A, Holmes DT. Recurrent hypoglycemia from insulin autoimmune syndrome. *J Gen Intern Med* 2014; **29**: 250-254 [PMID: 23979685 DOI: 10.1007/s11606-013-2588-9]
- 36 **Becht FS**, Walther K, Martin E, Nauck MA. Fasting C-peptide and Related Parameters Characterizing Insulin Secretory Capacity for Correctly Classifying Diabetes Type and for Predicting Insulin Requirement in Patients with Type 2 Diabetes. *Exp Clin Endocrinol Diabetes* 2016; **124**: 148-156 [PMID: 26824281 DOI: 10.1055/s-0035-1565177]
- 37 **Oh J**, Kim JH, Park HD. Clinical Utility and Cross-Reactivity of Insulin and C-Peptide Assays by the Lumipulse G1200 System. *Ann Lab Med* 2018; **38**: 530-537 [PMID: 30027696 DOI: 10.3343/alm.2018.38.6.530]
- 38 **Saisho Y**. Postprandial C-Peptide to Glucose Ratio as a Marker of  $\beta$  Cell Function: Implication for the Management of Type 2 Diabetes. *Int J Mol Sci* 2016; **17** [PMID: 27196896 DOI: 10.3390/ijms17050744]
- 39 **Jones AG**, Hattersley AT. The clinical utility of C-peptide measurement in the care of patients with diabetes. *Diabet Med* 2013; **30**: 803-817 [PMID: 23413806 DOI: 10.1111/dme.12159]
- 40 **Schaefer-Graf U**, Napoli A, Nolan CJ; Diabetic Pregnancy Study Group. Diabetes in pregnancy: a new decade of challenges ahead. *Diabetologia* 2018; **61**: 1012-1021 [PMID: 29356835 DOI: 10.1007/s00125-018-4545-y]
- 41 **Powe CE**. Early Pregnancy Biochemical Predictors of Gestational Diabetes Mellitus. *Curr Diab Rep* 2017; **17**: 12 [PMID: 28229385 DOI: 10.1007/s11892-017-0834-y]
- 42 **Ernst S**, Demirci C, Valle S, Velazquez-Garcia S, Garcia-Ocaña A. Mechanisms in the adaptation of maternal  $\beta$ -cells during pregnancy. *Diabetes Manag (Lond)* 2011; **1**: 239-248 [PMID: 21845205 DOI: 10.2217/dmt.10.24]
- 43 **Omazić J**, Viljetić B, Ivić V, Kadivnik M, Zibar L, Müller A, Wagner J. Early markers of gestational diabetes mellitus: what we know and which way forward? *Biochem Med (Zagreb)* 2021; **31**: 030502 [PMID: 34658643 DOI: 10.11613/BM.2021.030502]
- 44 **Fu J**, Retnakaran R. The life course perspective of gestational diabetes: An opportunity for the prevention of diabetes and heart disease in women. *EClinicalMedicine* 2022; **45**: 101294 [PMID: 35198924 DOI: 10.1016/j.eclinm.2022.101294]
- 45 **Yang X**, Ye Y, Wang Y, Wu P, Lu Q, Liu Y, Yuan J, Song X, Yan S, Qi X, Wang YX, Wen Y, Liu G, Lv C, Yang CX, Pan A, Zhang J, Pan XF. Association between early-pregnancy serum C-peptide and risk of gestational diabetes mellitus: a nested case-control study among Chinese women. *Nutr Metab (Lond)* 2022; **19**: 56 [PMID: 35996181 DOI: 10.1186/s12986-022-00691-3]
- 46 **Chen X**, Stein TP, Steer RA, Scholl TO. Individual free fatty acids have unique associations with inflammatory biomarkers, insulin resistance and insulin secretion in healthy and gestational diabetic pregnant women. *BMJ Open Diabetes Res Care* 2019; **7**: e000632 [PMID: 31245005 DOI: 10.1136/bmjdr-2018-000632]
- 47 **Falcone V**, Kotzner G, Breil MH, Rosicky I, Stopp T, Yerlikaya-Schatten G, Feichtinger M, Eppel W, Husslein P, Tura A, Göbl CS. Early Assessment of the Risk for Gestational Diabetes Mellitus: Can Fasting Parameters of Glucose Metabolism Contribute to Risk Prediction? *Diabetes Metab J* 2019; **43**: 785-793 [PMID: 30877716 DOI: 10.4093/dmj.2018.0218]
- 48 **Qiu C**, Vadachkoria S, Meryman L, Frederick IO, Williams MA. Maternal plasma concentrations of IGF-1, IGFBP-1, and C-peptide in early pregnancy and subsequent risk of gestational diabetes mellitus. *Am J Obstet Gynecol* 2005; **193**: 1691-1697 [PMID: 16260212 DOI: 10.1016/j.ajog.2005.04.015]
- 49 **Metzger BE**, Lowe LP, Dyer AR, Trimble ER, Chaovarindr U, Coustan DR, Hadden DR, McCance DR, Hod M, McIntyre HD, Oats JJ, Persson B, Rogers MS, Sacks DA; HAPO Study Cooperative Research Group. Hyperglycemia and adverse pregnancy outcomes. *N Engl J Med* 2008; **358**: 1991-2002 [PMID: 18463375 DOI: 10.1056/NEJMoa0707943]
- 50 **Lorenzo-Almorós A**, Hang T, Peiró C, Soriano-Guillén L, Egido J, Tuñón J, Lorenzo Ó. Predictive and diagnostic biomarkers for gestational diabetes and its associated metabolic and cardiovascular diseases. *Cardiovasc Diabetol* 2019; **18**: 140 [PMID: 31666083 DOI: 10.1186/s12933-019-0935-9]
- 51 **Stopp T**, Feichtinger M, Rosicky I, Yerlikaya-Schatten G, Ott J, Egarter HC, Schatten C, Eppel W, Husslein P, Mittlböck M, Tura A, Göbl CS. Novel Indices of Glucose Homeostasis Derived from Principal Component Analysis: Application for Metabolic Assessment in Pregnancy. *J Diabetes Res* 2020; **2020**: 4950584 [PMID: 32337294 DOI: 10.1155/2020/4950584]



Published by **Baishideng Publishing Group Inc**  
7041 Koll Center Parkway, Suite 160, Pleasanton, CA 94566, USA

**Telephone:** +1-925-3991568

**E-mail:** [office@baishideng.com](mailto:office@baishideng.com)

**Help Desk:** <https://www.f6publishing.com/helpdesk>

<https://www.wjgnet.com>

