

World Journal of *Psychiatry*

World J Psychiatry 2022 September 19; 12(9): 1115-1267



Contents

Monthly Volume 12 Number 9 September 19, 2022

EDITORIAL

- 1115 Suicidal behavior-advances in clinical and neurobiological research and improvement of prevention strategies

Sobanski T, Peikert G, Kastner UW, Wagner G

OPINION REVIEW

- 1127 Emerging role of psychosis in Parkinson's disease: From clinical relevance to molecular mechanisms

Zhang S, Ma Y

REVIEW

- 1141 Underlying mechanisms of mindfulness meditation: Genomics, circuits, and networks

Gu YQ, Zhu Y

- 1150 Depressive disorder and antidepressants from an epigenetic point of view

Šalamon Arčan I, Kouter K, Videtič Paska A

ORIGINAL ARTICLE

Case Control Study

- 1169 Delayed improvements in visual memory task performance among chronic schizophrenia patients after high-frequency repetitive transcranial magnetic stimulation

Du XD, Li Z, Yuan N, Yin M, Zhao XL, Lv XL, Zou SY, Zhang J, Zhang GY, Li CW, Pan H, Yang L, Wu SQ, Yue Y, Wu YX, Zhang XY

- 1183 Galectin-3 mediated risk of inflammation in stable schizophrenia, with only possible secondary consequences for cognition

Minic Janicijevic S, Jovanovic IP, Gajovic NM, Jurisevic MM, Debnath M, Arsenijevic NN, Borovcanin MM

Observational Study

- 1194 Associations between social support and anxiety during the COVID-19 lockdown in young and middle-aged Israelis: A cross-sectional study

Xi Y, Elkana O, Jiao WE, Li D, Tao ZZ

SYSTEMATIC REVIEWS

- 1204 Psychotic symptoms in bipolar disorder and their impact on the illness: A systematic review

Chakrabarti S, Singh N

- 1233 Mental health impact on Black, Asian and Minority Ethnic populations with preterm birth: A systematic review and meta-analysis

Delanerolle G, Zeng YT, Phiri P, Phan T, Tempest N, Busuulwa P, Shetty A, Raymont V, Rathod S, Shi JQ, Hapangama DK

LETTER TO THE EDITOR

- 1255** Sodium selenite may be not the optimal speciation as an effective therapy for arsenic-induced anxiety-/depression-like behavior
Ren XH, Wang XX, He LP
- 1258** Beneficial for mental health, exercise more or less?
Yan WJ, Zhang F, Ouyang H, Xing CQ, Liu WZ
- 1261** Magnesium may be an effective therapy for Alzheimer's disease
Lei DY, Sun J
- 1264** Why do we not reverse the path? Stress can cause depression, reduction of brain-derived neurotrophic factor and increased inflammation
Claro AE, Palanza C, Mazza M, Rizzi A, Tartaglione L, Marano G, Muti-Schuenemann G, Rigoni M, Muti P, Pontecorvi A, Janiri L, Sani G, Pitocco D

ABOUT COVER

Editorial Board Member of *World Journal of Psychiatry*, Giampaolo Perna, MD, PhD, Chairman, Professor, Department of Biomedical Sciences, Humanitas University, Milan 20090, Italy. giampaolo.perna@hunimed.eu

AIMS AND SCOPE

The primary aim of *World Journal of Psychiatry* (WJP, *World J Psychiatry*) is to provide scholars and readers from various fields of psychiatry with a platform to publish high-quality basic and clinical research articles and communicate their research findings online.

WJP mainly publishes articles reporting research results and findings obtained in the field of psychiatry and covering a wide range of topics including adolescent psychiatry, biological psychiatry, child psychiatry, community psychiatry, ethnopsychology, psychoanalysis, psychosomatic medicine, etc.

INDEXING/ABSTRACTING

The WJP is now abstracted and indexed in Science Citation Index Expanded (SCIE, also known as SciSearch®), Current Contents/Clinical Medicine, Journal Citation Reports/Science Edition, PubMed, PubMed Central, Reference Citation Analysis, China National Knowledge Infrastructure, China Science and Technology Journal Database, and Superstar Journals Database. The 2022 Edition of Journal Citation Reports® cites the 2021 impact factor (IF) for WJP as 3.500; IF without journal self cites: 3.313; 5-year IF: 7.380; Journal Citation Indicator: 0.62; Ranking: 89 among 155 journals in psychiatry; and Quartile category: Q3.

RESPONSIBLE EDITORS FOR THIS ISSUE

Production Editor: *Yu-Xi Chen*; Production Department Director: *Xu Guo*; Editorial Office Director: *Jia-Ping Yan*.

NAME OF JOURNAL

World Journal of Psychiatry

ISSN

ISSN 2220-3206 (online)

LAUNCH DATE

December 31, 2011

FREQUENCY

Monthly

EDITORS-IN-CHIEF

Rajesh R Tampi, Ting-Shao Zhu, Panteleimon Giannakopoulos

EDITORIAL BOARD MEMBERS

<https://www.wjgnet.com/2220-3206/editorialboard.htm>

PUBLICATION DATE

September 19, 2022

COPYRIGHT

© 2022 Baishideng Publishing Group Inc

INSTRUCTIONS TO AUTHORS

<https://www.wjgnet.com/bpg/gerinfo/204>

GUIDELINES FOR ETHICS DOCUMENTS

<https://www.wjgnet.com/bpg/GerInfo/287>

GUIDELINES FOR NON-NATIVE SPEAKERS OF ENGLISH

<https://www.wjgnet.com/bpg/gerinfo/240>

PUBLICATION ETHICS

<https://www.wjgnet.com/bpg/GerInfo/288>

PUBLICATION MISCONDUCT

<https://www.wjgnet.com/bpg/gerinfo/208>

ARTICLE PROCESSING CHARGE

<https://www.wjgnet.com/bpg/gerinfo/242>

STEPS FOR SUBMITTING MANUSCRIPTS

<https://www.wjgnet.com/bpg/GerInfo/239>

ONLINE SUBMISSION

<https://www.f6publishing.com>



Mental health impact on Black, Asian and Minority Ethnic populations with preterm birth: A systematic review and meta-analysis

Gayathri Delanerolle, Yu-Tian Zeng, Peter Phiri, Thuan Phan, Nicola Tempest, Paula Busuulwa, Ashish Shetty, Vanessa Raymont, Shanaya Rathod, Jian-Qing Shi, Dharani K Hapangama

Specialty type: Psychiatry

Provenance and peer review:

Invited article; Externally peer reviewed.

Peer-review model: Single blind

Peer-review report's scientific quality classification

Grade A (Excellent): 0

Grade B (Very good): B

Grade C (Good): C

Grade D (Fair): 0

Grade E (Poor): 0

P-Reviewer: Chakrabarti S, India;
Ng QX, Singapore

Received: March 21, 2022

Peer-review started: March 21, 2022

First decision: May 30, 2022

Revised: June 16, 2022

Accepted: August 5, 2022

Article in press: August 5, 2022

Published online: September 19, 2022



Gayathri Delanerolle, Nuffield Department of Primary Care Health Science, University of Oxford, Oxford OX3 7JX, United Kingdom

Gayathri Delanerolle, Peter Phiri, Shanaya Rathod, Research and Innovation, Southern Health NHS Foundation Trust, Southampton SO30 3JB, United Kingdom

Yu-Tian Zeng, Southern University of Science and Technology, Shenzhen 518055, Guangdong Province, China

Peter Phiri, Psychology Department, Faculty of Environmental and Life Sciences, University of Southampton, Southampton SO17 1BJ, United Kingdom

Thuan Phan, Nicola Tempest, Paula Busuulwa, Dharani K Hapangama, Department of Women's and Children's Health, University of Liverpool, Liverpool L7 8TX, United Kingdom

Nicola Tempest, Dharani K Hapangama, Gynaecology Directorate and Hewitt Centre for Reproductive Medicine, Liverpool Women's NHS Foundation, Liverpool L8 7SS, United Kingdom

Ashish Shetty, National Hospital for Neurology and Neurosurgery, University College London Hospitals NHS Foundation Trust, London W1T 4AJ, United Kingdom

Vanessa Raymont, Department of Psychiatry, University of Oxford, Oxford OX3 7JX, United Kingdom

Jian-Qing Shi, National Centre for Applied Mathematics Shenzhen, Shenzhen 518055, Guangdong Province, China

Jian-Qing Shi, Department of Statistics, Southern University of Science and Technology, Shenzhen 518055, Guangdong Province, China

Corresponding author: Peter Phiri, BSc, PhD, RN, Academic Fellow, Director, Research and Innovation, Southern Health NHS Foundation Trust, Clinical Trials Facility, Tom Rudd Unit Moorgreen Hospital, Botley Road, West End, Southampton SO30 3JB, United Kingdom.
peter.phiri@southernhealth.nhs.uk

Abstract

BACKGROUND

Preterm birth (PTB) is one of the main causes of neonatal deaths globally, with approximately 15 million infants are born preterm. Women from the Black, Asian, and Minority Ethnic (BAME) populations maybe at higher risk of PTB, therefore, the mental health impact on mothers experiencing a PTB is particularly important, within the BAME populations.

AIM

To determine the prevalence of mental health conditions among BAME women with PTB as well as the methods of mental health assessments used to characterise the mental health outcomes.

METHODS

A systematic methodology was developed and published as a protocol in PROSPERO (CRD420-20210863). Multiple databases were used to extract relevant data. I^2 and Egger's tests were used to detect the heterogeneity and publication bias. A trim and fill method was used to demonstrate the influence of publication bias and the credibility of conclusions.

RESULTS

Thirty-nine studies met the eligibility criteria from a possible 3526. The prevalence rates of depression among PTB-BAME mothers were significantly higher than full-term mothers with a standardized mean difference of 1.5 and a 95% confidence interval (CI) 29%-74%. The subgroup analysis indicated depressive symptoms to be time sensitive. Women within the very PTB category demonstrated a significantly higher prevalence of depression than those categorised as non-very PTB. The prevalence rates of anxiety and stress among PTB-BAME mothers were significantly higher than in full-term mothers (odds ratio of 88% and 60% with a CI of 42%-149% and 24%-106%, respectively).

CONCLUSION

BAME women with PTB suffer with mental health conditions. Many studies did not report on specific mental health outcomes for BAME populations. Therefore, the impact of PTB is not accurately represented in this population, and thus could negatively influence the quality of maternity services they receive.

Key Words: Preterm labor; Preterm birth; Black, Asian, and Minority Ethnic; Mental health; Women's health; Wellbeing

©The Author(s) 2022. Published by Baishideng Publishing Group Inc. All rights reserved.

Core Tip: Preterm birth is a multi-etiological condition and a leading cause of perinatal mortality and morbidity. This study demonstrates the mental health impact due to preterm birth among the Black, Asian and Ethnic minority women. There is minimal research available at present around this subject matter, and this important disease sequelae.

Citation: Delanerolle G, Zeng YT, Phiri P, Phan T, Tempest N, Busuulwa P, Shetty A, Raymont V, Rathod S, Shi JQ, Hapangama DK. Mental health impact on Black, Asian and Minority Ethnic populations with preterm birth: A systematic review and meta-analysis. *World J Psychiatry* 2022; 12(9): 1233-1254

URL: <https://www.wjgnet.com/2220-3206/full/v12/i9/1233.htm>

DOI: <https://dx.doi.org/10.5498/wjp.v12.i9.1233>

INTRODUCTION

Preterm birth (PTB) is a multi-etiological condition and a leading cause of perinatal mortality and morbidity[1]. PTB can be categorized as per the World Health Organization classification methods as extreme preterm (gestational age < 28 wk), very preterm (gestational age of 28-32 wk) and moderately preterm (32-37 wk). Most preterm infants are at risk of developing respiratory and gastrointestinal complications[2]. The PTB rates are higher in most developed regions of the world, despite advances in medicine. PTB are at the highest level in the US for between 12%-15% and 5%-9% in Europe. In comparison, PTB rates in China range between 4.7%-18.9% (1987-2006) and Taiwan 8.2%-9.1%[3]. The prevalence of PTB increased from 9.8% in 2000 to 10.6% by 2014 and has become a global public health

issue[1]. However, the mental health impact associated with PTB is not extensively examined, despite it potentially may exacerbate the patient's experience of a distressing birth. Furthermore, clearly pronounced risk of PTB among Black women have been reported in studies from United States or United Kingdom[4,5], with limited data on the risk among other ethnic groups. While health disparities, social deprivation are recognised risk factors for PTB that are also frequently associated with Black, Asian, and Minority Ethnic (BAME) populations, the available data on ethnic disparities associated with PTB remains limited.

In the United Kingdom, health disparities within Caribbean and West African populations demonstrate a significant risk of very PTB in comparison to Caucasians. Similar risks within the South Asian community appear to be less consistent in comparison to Caucasian PTB women[11]. In the United Kingdom, National Health Service (NHS) England reports improvements to maternity services are a priority as part of the NHS 10-year plan[12]. As per the 2018 Public Health England report on maternity services, 1 in 4 of all births within Wales and England were to mothers born outside the United Kingdom[12]. Additionally, 13% of all infants born between 2013-2017 are from the BAME population[12]. Importantly, Black women were 5 times more at risk of death during parturition and Asian babies are 73% more likely to result in neonatal death compared to Caucasian women[12], therefore, the mental health impact experienced by PTB mothers is vital to evaluate particularly in the BAME population. A number of socio-economic, genetic and obstetric causes have been proposed to explain mental health disorders among PTB women, but these theories do not fully explain the aetiology. Furthermore, they also exclude the bidirectional relationship between PTB, and mental health conditions demonstrated by some studies[13,18,19].

This available evidence demonstrates a need to explore the mental health impact on BAME women with PTB. We believe that gathering this evidence would inform the forthcoming evidence-based women's health strategy in the United Kingdom to explore both the physical and mental health components, and to be inclusive using cultural adaptations where appropriate.

MATERIALS AND METHODS

An evidence synthesis methodology was developed using a systematic protocol that was developed and published on PROSPERO (CRD42020210863). The aims of the study were to determine the prevalence of mental health conditions among BAME women with PTB as well as the mental health assessments used to characterise the mental health outcomes.

Data searches

Multiple databases were used, including PubMed, EMBASE, Science direct, and The Cochrane Central Register of Controlled trials for the data extraction process. Searches were carried out using multiple keywords and MeSH terms such as "Depression", "Anxiety", "Mood disorders", "PTSD", "Psychological distress", "Psychological stress", "Psychosis", "Bipolar", "Mental Health", "Unipolar", "self-harm", "BAME", "Preterm birth", "Maternal wellbeing" and "Psychiatry disorders". These terms were then expanded using the 'snow-ball' method and the fully developed methods are in the supplementary section (Supplementary material).

Eligibility criteria and study selection

All eligible randomised controlled trials (RCTs) and non-RCTs published in English were included. The final dataset was reviewed independently. Multiple mental health variables were used alongside of the 2 primary variables of PTB and BAME.

Data extraction and analysis

The extraction and eligibility has been demonstrated using a PRISMA diagram. The data was collected using Endnote and Microsoft excel. Stata 16.1 was used as a way to complete the final statistical analysis. Standardized mean difference (SMD) and 95% confidence interval (CI) were extracted for analysis. Heterogeneity was assessed by way of funnel plots, χ^2 -test (P value) and I^2 . A sub-group analysis was conducted to determine the mental health symptomatology identified and the geographical location.

Due to the unified use of mental health assessments, in order to standardize the mean differences reported within each study, the following mathematical method was used[25-27]:

$$\widehat{g}_k = (1 - \frac{3}{4n_k - 9}) \frac{\widehat{u}_{ek} - \widehat{u}_{ck}}{\sqrt{((n_{ek} - 1)s_{ek}^2 + (n_{ck} - 1)s_{ck}^2)/(n_k - 2)}}$$

$$\widehat{Var}(\widehat{g}_k) = \frac{n_k}{n_{ek} \cdot n_{ck}} + \frac{\widehat{g}_k^2}{2(n_k - 3.94)}$$

where, $n_k = n_{ek} + n_{ck}$, n_{ek} , \widehat{u}_{ek} , s_{ek} are the number, mean and standard variation of exposed group and n_{ck} , \widehat{u}_{ck} , s_{ck} are the number, mean and standard variation of control group. Then we can obtain the 95%

confidence interval by $\widehat{g}_k \pm 1.96 * S.E.(\widehat{g}_k)$ where $S.E.(\widehat{g}_k) = \sqrt{Var(\widehat{g}_k)}$.

Meta-regression and sub-group analysis

To eliminate heterogeneity, a meta-regression and sub-group analyses were conducted by mental health assessment timepoints and country.

Sensitivity analysis

To further analyse the heterogeneity of studies reporting depression and anxiety, a sensitivity analysis was conducted.

Risk of bias quality assessment

Studies included within this study were critically appraised individually using mental health variables. All studies appraised for methodological quality and risk of bias based on the Newcastle-Ottawa Scale (NOS), which is commonly used for cross-sectional and/or cohort studies as demonstrated by Wells *et al* [73]. These could be further modified using the adapted NOS version as reported by Modesti *et al* [74]. The NOS scale includes 8 items within 3 specific quality parameters of selection, outcome and comparability. The quality of these studies was reported as good, fair or poor based on the details below: Good quality score of 3 or 4 stars were awarded in selection, 1 or 2 in comparability and 2 or 3 stars in outcomes; Fair quality score of 2 stars were awarded in selection, 1 or 2 stars in comparability and 2 or 3 stars in outcomes; Poor quality score was allocated 0 or 1 star in selection, 0 stars in comparability and 0 or 1 star in outcomes.

Outcomes

The following outcomes were included within the meta-analysis: Prevalence of anxiety and depressive symptoms, and parenting stress; Clinical significance of the data identified; Critical interpretive synthesis of common mental health reported outcomes.

Outcomes such as post-partum depression could not be synthesised for the meta-analysis. Therefore, these aspects have been included in the narrative analysis only.

Publication bias

Publication bias is a concern to the validity of conclusion of a meta-analysis. As a result, several methods could be used to assess this aspect. An egger's test was used to report on publication bias. Additionally, a trim and fill (TAF) method was used to analyze the influence of publication bias. TAF estimates any missing studies due to publication bias within the funnel plot to adjust the overall effect estimate.

Patient and public involvement

A representative from a patient-public focus group associated with a multi-morbid project investigating women's physical and mental health sequelae was invited to review the protocol and the resulting paper. This is a vital facet of developing and delivering an authentic evidence synthesis to reduce the gap between evidence production, development of solutions to address the identified gaps and the implementation of the solutions into practice as well as their acceptability by patients.

RESULTS

Of the 3526 studies, 39 met the eligibility criteria. All 39 studies reported the mental health status of BAME women with PTB although it remained unclear if they reported mental health symptoms or clinical diagnoses. Figure 1 shows the PRISMA diagram. The mental health assessments and frequency of the data gathering varied across studies. The 39 studies primarily reported stress, anxiety and depression as indicated in Table 1 along with other characteristics. The quality assessment using the Newcastle Ottawa scale (NOS) and Risk of Bias identified within the pooled studies are shown in Tables 2 and 3 and Supplementary Table 1. Brief description of various scales used to assess depression, anxiety, and stress across studies is presented in the supplementary file on Mental Health Questionnaires.

Depression

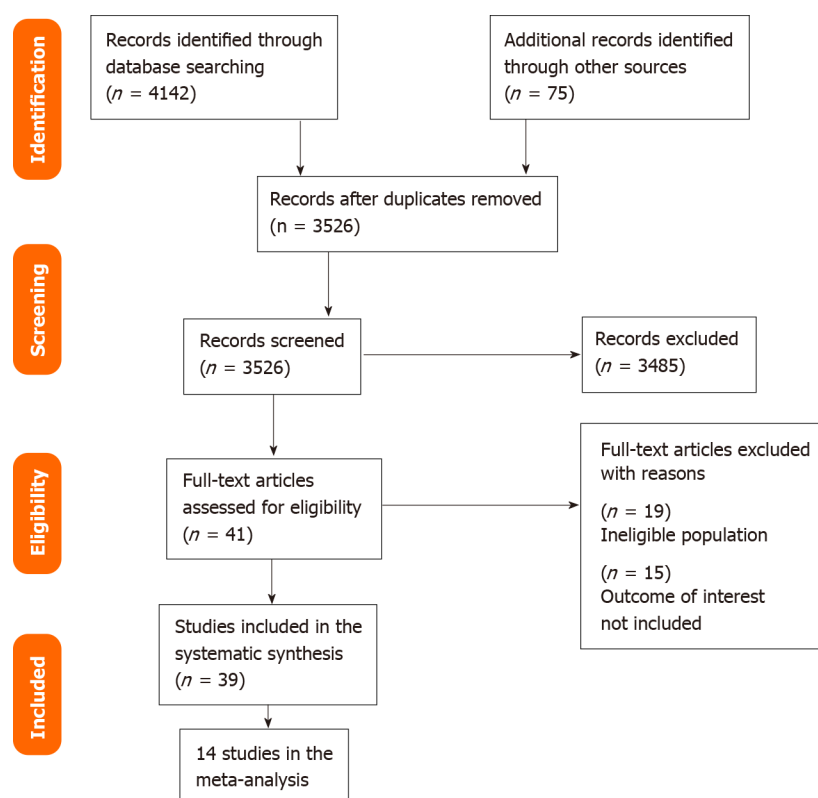
Of the 39 studies, 36 primarily reported an association between the prevalence of depression and PTB. Fifteen studies only examined the differences of non-depressive symptoms as well other factors such as race, ethnicity, plurality across multiple assessment timepoints although, they were not compared to full-term birth mothers of BAME decent. The overall SMD was 0.4 and 95%CI of a range of 0.25-0.56, indicating the prevalence of depression in PTB mothers to be significantly higher than mothers who delivered at term. $I^2 = 82.69\%$ indicated high heterogeneity among the depression group.

Table 1 Key features of the studies included in the systematic review

ID	Ref.	Study type	Country	Symptoms		Outcome assessment [†]
1	Ballantyne <i>et al</i> [37]	Cross-sectional study	Canada	Depression	Stress	(1) CES-D; and (2) PSS: NICU
2	Baptista <i>et al</i> [48]	Cross-sectional study	Portugal	Psychological problem	Stress	(1) BSI; and (2) Daily hassles questionnaire
3	Barroso <i>et al</i> [38]	Cross sectional study	United States	Depression		EPD-S
4	Bener [60]	Hospital-based study (cross sectional study)	Qatar	Depression	Anxiety	Stress (1) DASS-21; (2) DASS-21; and (3) DASS-21
5	Bouras <i>et al</i> [34]	Cross-sectional study	Greece	Depression	Anxiety	(1) BDI; and (2) STAI
6	Brandon <i>et al</i> [39]	Descriptive study	United States	Depression	Anxiety	Stress (1) EPDS; (2) STAI-S; (3) PPQ; and (4) CHWS
7	Carson <i>et al</i> [49]	Cohort study	United Kingdom	Psychological problem		Modified RMI
8	Cheng <i>et al</i> [13]	Cohort study	United States	Depression		CES-D
9	Davis <i>et al</i> [57]	Cross-sectional study	Australia	Depression	Stress	(1) EPDS; and (2) DASS
10	Drewett <i>et al</i> [50]	Cross-sectional study	United Kingdom	Depression		EPDS
11	Edwards <i>et al</i> [58]	Cohort study	Australia	Depression	Parenting stress	(1) EPDS; and (2) PSI
12	Fabiyi <i>et al</i> [40]	Cross-sectional study	United States		(1) State anxiety; and (2) Trait anxiety	STAI
13	Gambina <i>et al</i> [33]	Case-control study	Italy	Depression	(1) State anxiety; and (2) Trait anxiety	Stress (1) EPDS; (2) STAI-State and STAI-Trait; and (3) PSM
14	Gueron-Sela <i>et al</i> [30]	Cross-sectional study	Israel	Depression	Stress	(1) CES-D; and (2) PSS: NICU
15	Gulamani <i>et al</i> [24]	Cohort study	Pakistan	Depression		EPDS
16	Gungor <i>et al</i> [35]	Case-control study	Turkey	Depression	(1) State anxiety; (2) Trait anxiety	(1) BDI; and (2) STAI
17	Hagan <i>et al</i> [59]	Prospective, randomised, controlled study	Australia	Depression	Anxiety	(1) EPDS; and (2) BDI
18	Henderson <i>et al</i> [51]	Cross-sectional study	United Kingdom	Depression		EPDS
19	Holditch-Davis <i>et al</i> [44]	Cross-sectional study	United States	Depression	Anxiety	Stress (1) CES-D; (2) STAI; and (3) PSS: NICU
20	Ionio <i>et al</i> [52]	Longitudinal study	Italy	Depression		Profile of mood states
21	Logsdon <i>et al</i> [41]	Descriptive study	United States	Depression		CES-D
22	Misund <i>et al</i> [53]	Longitudinal study	Norway	Psychological distress	Anxiety	Trauma-related stress (1) GHQ likert sum and case sum; (2) STAI-X1; and (3) Impact of event scale (IES)
23	Misund <i>et al</i> [53]	Cohort study	Norway	Psychological distress	Anxiety	Trauma-related stress (1) GHQ likert sum and case sum; (2) STAI-X1; and (3) IES
24	Pace <i>et al</i> [32]	Longitudinal, prospective, follow-up cohort study	Australia	Depression	Anxiety	(1) CES-D; and (2) Hospital anxiety and depression scale
25	Rogers <i>et al</i> [42]	Cohort study	United States	Depression	Anxiety	(1) EPDS; and (2) STAI
26	Sharan <i>et al</i> [61]	Cross-sectional study	Israel	Depression		EPDS
27	Shaw <i>et al</i> [43]	Cross-sectional study	United States	Depression	Anxiety	Stress (1) BDI-II; (2) BAI; and (3) SASRQ

28	Trumello <i>et al</i> [54]	Longitudinal study	Italy	Depression	(1) State anxiety; and (2) Trait anxiety		(1) EPDS; and (2) STAI-State Y1 and Y2
29	Holditch-Davis <i>et al</i> [44]	Longitudinal study	United States	Depression	State anxiety	Stress	(1) CESD; (2) STAI; (3) PSS: NICU; and (4) PSS:PBC
30	Mautner <i>et al</i> [55]	Prospective, longitudinal study	Austria	Depression			EPDS
31	Gray <i>et al</i> [28]	Cross-sectional study	Australia	Depression		Parenting stress	(1) EPDS; and (2) PSI-SF
32	Gray <i>et al</i> [29]	Cross-sectional study	Australia	Depression		Parenting stress	(1) EPDS; and (2) PSI-SF
33	Howe <i>et al</i> [62]	Cross-sectional study	Taiwan			Parenting stress	PSI-Chinese version
34	Miles <i>et al</i> [45]	Longitudinal, descriptive study	United States	Depression			CES-D
35	Mew <i>et al</i> [46]	Correlational analysis	United States	Depression			CES-D
36	Madu and Roos [31]	Cross-sectional study	South Africa	Depression			EPDS
37	Suttora <i>et al</i> [36]	Descriptive study	Italy			(1) PTSD; and (2) Parenting stress	(1) PPQ-Modified version; and (2) PSI-SF
38	Korja <i>et al</i> [56]	Cross-sectional study	Finland	Depression			EPDS
39	Younger <i>et al</i> [47]	Descriptive correlational study	United States	Depression		Stress	(1) CES-D; and (2) MSI

¹Outcome assessment scales: Edinburgh Postnatal Depression Scale; State-Trait Anxiety Inventory; Hospital Anxiety and Depression Scale; Centre for Epidemiological Studies Depression; Beck's Depression Inventory; Profile of Mood States; Parent Stress Index; Professional Personality Questionnaire; Perceived Stress Measure. EPDS: Edinburgh Postnatal Depression Scale; STAI: State-Trait Anxiety Inventory; HADS-A: Hospital Anxiety and Depression Scale; CES-D: Centre for Epidemiological Studies Depression; BDI: Beck's Depression Inventory; POMS: Profile of Mood States; PSI: Parent Stress Index; PPQ: Professional Personality Questionnaire; PSM: Perceived Stress Measure.



DOI: 10.5498/wjp.v12.i9.1233 Copyright ©The Author(s) 2022.

Figure 1 PRISMA diagram.

Table 2 The quality assessment outcomes using the Newcastle-Ottawa Scale

ID	Ref.	Study type	Country	Symptoms			Outcome assessment	NOS score
1	Ballantyne <i>et al</i> [37]	Cross-sectional study	Canada	Depression		Stress	(1) CES-D; and (2) PSS: NICU	***** (6)
2	Baptista <i>et al</i> [48]	Cross-sectional study	Portugal	Psychological problem		Stress	(1) BSI; and (2) Daily hassles questionnaire	***** (5)
3	Barroso <i>et al</i> [38]	Cross sectional study	United States	Depression			EPD-S	***** (6)
4	Bener[60]	Hospital-based study (Cross sectional study)	Qatar	Depression	Anxiety	Stress	(1) DASS-21; (2) DASS-21; and (3) DASS-21	***** (5)
5	Bouras <i>et al</i> [34]	Cross-sectional study	Greece	Depression	Anxiety		(1) BDI; and (2) STAI	***** (6)
6	Brandon <i>et al</i> [39]	descriptive study	United States	Depression	Anxiety	Stress	(1) EPDS; (2) STAI-S; (3) PPQ; and (4) CHWS	***** (7)
7	Carson <i>et al</i> [49]	Cohort study	United Kingdom	Psychological problem			Modified RMI	***** (5)
8	Cheng <i>et al</i> [13]	Cohort study	United States	Depression			CES-D	***** (5)
9	Davis <i>et al</i> [57]	Cross-sectional study	Australia	Depression		Stress	(1) EPDS; and (2) DASS	***** (5)
10	Drewett <i>et al</i> [50]	Cross-sectional study	United Kingdom	Depression			EPDS	***** (5)
11	Edwards <i>et al</i> [58]	Cohort study	Australia	Depression		Parenting stress	(1) EPDS; and (2) PSI	***** (5)
12	Fabiyi <i>et al</i> [40]	Cross-sectional study	United States		(1) State anxiety; and (2) Trait anxiety		STAI	***** (6)
13	Gambina <i>et al</i> [33]	Case-control study	Italy	Depression	(1) State anxiety; and (2) Trait anxiety	Stress	(1) EPDS; (2) STAI-State and STAI-Trait; and (3) PSM	***** (6)
14	Gueron-Sela <i>et al</i> [30]	Cross-sectional study	Israel	Depression		Stress	(1) CES-D; and (2) PSS: NICU	***** (7)
15	Gulamani <i>et al</i> [24]	Cohort study	Pakistan	Depression			EPDS	**** (4)
16	Gungor <i>et al</i> [35]	Case-control study	Turkey	Depression	(1) State anxiety; (2) Trait anxiety		(1) BDI; and (2) STAI	***** (6)
17	Hagan <i>et al</i> [59]	Prospective,randomised, controlled study	Australia	Depression	Anxiety		(1) EPDS; and (2) BDI	***** (6)
18	Henderson <i>et al</i> [51]	Cross-sectional study	United Kingdom	Depression			EPDS	***** (7)
19	Holditch-Davis <i>et al</i> [44]	Cross-sectional study	United States	Depression	Anxiety	Stress	(1) CES-D; (2) STAI; and (3) PSS: NICU	***** (6)
20	Ionio <i>et al</i> [52]	Longitudinal study	Italy	Depression			Profile of mood states	***** (5)
21	Logsdon <i>et al</i> [41]	Descriptive study	United States	Depression			CES-D	***** (6)
22	Misund <i>et al</i> [53]	Longitudinal study	Norway	Psychological distress	Anxiety	Trauma-related stress	(1) GHQ likert sum and case sum; (2) STAI-X1; and (3) Impact of Event Scale (IES)	***** (6)
23	Misund <i>et al</i>	Cohort study	Norway	Psychological	Anxiety	Trauma-	(1) GHQ likert sum	***** (5)

	[53]			distress		related stress	and case sum; (2) STAI-X1; and (3) IES	
24	Pace <i>et al</i> [32]	Longitudinal, prospective, follow-up cohort study	Australia	Depression	Anxiety		(1) CES-D; and (2) Hospital anxiety and depression scale	***** (6)
25	Rogers <i>et al</i> [42]	Cohort study	US	Depression	Anxiety		(1) EPDS; and (2) STAI	***** (5)
26	Sharan <i>et al</i> [61]	Cross-sectional study	Israel	Depression			EPDS	***** (6)
27	Shaw <i>et al</i> [43]	Cross-sectional study	US	Depression	Anxiety	Stress	(1) BDI-II; (2) BAI; and (3) SASRQ	***** (6)
28	Trumello <i>et al</i> [54]	Longitudinal study	Italy	Depression	1) State anxiety 2) Trait anxiety		(1) EPDS; and (2) STAI-State Y1 and Y2	***** (7)
29	Holditch-Davis <i>et al</i> [44]	Longitudinal study	US	Depression	1) State anxiety	Stress	(1) CESD; (2) STAI; (3) PSS: NICU; and (4) PSS:PBC	***** (6)
30	Mautner <i>et al</i> [55]	Prospective, longitudinal study	Austria	Depression			EPDS	***** (6)
31	Gray <i>et al</i> [28]	Cross-sectional study	Australia	Depression		Parenting stress	(1) EPDS; and (2) PSI-SF	***** (6)
32	Gray <i>et al</i> [29]	Cross-sectional study	Australia	Depression		Parenting stress	(1) EPDS; and (2) PSI-SF	***** (6)
33	Howe <i>et al</i> [62]	Cross-sectional study	Taiwan			Parenting stress	PSI-Chinese version	***** (6)
34	Miles <i>et al</i> [45]	Longitudinal, descriptive study	United States	Depression			CES-D	***** (5)
35	Mew <i>et al</i> [46]	Correlational analysis	United States	Depression			CES-D	***** (5)
36	Madu and Roos[31]	Cross-sectional study	South Africa	Depression			EPDS	***** (6)
37	Suttora <i>et al</i> [36]	Decriptive study	Italy			(1) PTSD; and (2) Parenting stress	(1) PPQ-Modified version; and (2) PSI-SF	***** (5)
38	Korja <i>et al</i> [56]	Cross-sectional study	Finland	Depression			EPDS	***** (6)
39	Younger <i>et al</i> [47]	Decriptive correlational study	United States	Depression		Stress	(1) CES-D; and (2) MSI	***** (6)

*: Quality of the included cross-sectional studies was measured using the modified Newcastle-Ottawa Measurement Scale specific for Cross-sectional studies. We rated the quality of the studies (good, fair and poor) by allocating each domain with stars in this manner: A good quality score was awarded 3 or 4 stars in selection, 1 or 2 in comparability, and 2 or 3 stars in outcomes; A fair quality score was awarded 2 stars in selection, 1 or 2 stars in comparability, and 2 or 3 stars in outcomes; A poor quality score was allocated 0 or 1 star(s) in selection, 0 stars in comparability, and 0 or 1 star(s) in outcomes domain in line with the Newcastle-Ottawa Scale guidelines. NOS: Newcastle-Ottawa Scale; EPDS: Edinburgh Postnatal Depression Scale; STAI: State-Trait Anxiety Inventory; HADS-A: Hospital Anxiety and Depression Scale; CES-D: Centre for Epidemiological Studies Depression; BDI: Beck's Depression Inventory; POMS: Profile of Mood States; PSI: Parent Stress Index; PPQ: Professional Personality Questionnaire; PSM: Perceived Stress Measure.

Shaw *et al*[43] focused on the association between depression symptoms and the efficiency of Edinburgh Postnatal Depression Scale (EPDS), although the specificity of EPDS to the BAME population was not demonstrated. Since most of the studies reported mean and SD, we pooled mean differences and its 95% CI. Seven of the studies lacked information about mean score and SD, thus, were excluded from the meta-analysis. Gray *et al*[28,29] used the same dataset in two papers, therefore one of these was included into the meta-analysis. Therefore, a total of 12 studies were included in the meta-analysis as indicated by Table 4. Additionally, Gueron-Sela *et al*[30] studied two ethnicities, therefore it was used twice as reported in Table 4. Therefore, 13 items were reported in the meta-analysis for depression. The meta-analyses for anxiety and stress had 5 studies each, as demonstrated in Tables 5 and 6.

Anxiety

The 12 studies reporting anxiety utilised EDPS, the State-Trait Anxiety Inventory (STAI), Hospital

Table 3 Risk of Bias using the Newcastle-Ottawa Scale

	Selection (S)				Comparability (C)		Exposure/outcome E/O			Sub total assessment			Conclusion
	1	2	3	4	1a	1b	1	2	3	S ¹	C ²	E/O ²	
Ballantyne <i>et al</i> [37]	*	*	No	*	*	*	No	*	*	Good	Good	Good	Good
Baptista <i>et al</i> [48]	*	*	No	*	*	*	*	*	*	Good	Good	Good	Good
Barroso <i>et al</i> [38]	*	*	*	*	*	*	*	No	*	Good	Good	Good	Good
Bener[60]	*	No	*	*	*	*	*	*	*	Good	Good	Good	Good
Bouras <i>et al</i> [34]	*	*	*	*	*	*	*	*	*	Good	Good	Good	Good
Brandon <i>et al</i> [39]	*	*	*	*	*	*	*	*	*	Good	Good	Good	Good
Carson <i>et al</i> [49]	*	No	*	*	*	*	*	*	*	Good	Good	Good	Good
Cheng <i>et al</i> [13]	*	*	No	*	No	*	*	*	*	Good	Good	Good	Good
Davis <i>et al</i> [57]	*	*	No	No	*	*	*	*	*	Fair	Good	Good	Good
Drewett <i>et al</i> [50]	*	*	*	*	No	*	*	*	*	Good	Good	Good	Good
Edwards <i>et al</i> [58]	*	No	No	*	No	*	*	*	*	Fair	Good	Good	Fair
Fabiyi <i>et al</i> [40]	*	No	*	No	No	*	*	*	*	Fair	Fair	Good	Fair
Gambina <i>et al</i> [33]	*	No	*	*	*	*	*	*	*	Good	Good	Good	Good
Gueron-Sela <i>et al</i> [30]	*	*	*	*	*	*	*	*	*	Good	Good	Good	Good
Gulamani <i>et al</i> [24]	*	No	*	*	*	*	*	*	*	Good	Good	Good	Good
Gungor <i>et al</i> [35]	*	*	*	*	*	*	*	*	*	Good	Good	Good	Good
Hagan <i>et al</i> [59]	*	*	*	*	*	*	*	*	*	Good	Good	Good	Good
Henderson <i>et al</i> [51]	*	*	*	*	*	*	*	*	*	Good	Good	Good	Good
Holditch-Davis <i>et al</i> [44]	*	*	No	*	No	*	*	*	*	Good	Good	Good	Good
Ionio <i>et al</i> [52]	*	*	*	*	*	*	*	*	*	Good	Good	Good	Good
Logsdon <i>et al</i> [41]	*	No	No	*	No	*	*	*	*	Fair	Fair	Good	Fair
Misund <i>et al</i> [53]	No	*	*	*	*	*	*	*	*	Good	Good	Good	Good
Misund <i>et al</i> [53]	*	*	*	*	*	*	*	*	*	Good	Good	Good	Good
Pace <i>et al</i> [32]	*	*	*	*	*	*	*	*	*	Good	Good	Good	Good
Rogers <i>et al</i> [42]	*	*	*	*	*	*	*	*	*	Good	Good	Good	Good

Sharan <i>et al</i> [61]	No	*	*	*	*	*	*	*	*	Good	Good	Good	Good
Shaw <i>et al</i> [43]	*	*	*	*	*	*	*	*	*	Good	Good	Good	Good
Trumello <i>et al</i> [54]	*	*	*	*	*	*	*	*	*	Good	Good	Good	Good
Holditch-Davis <i>et al</i> [44]	*	*	*	*	*	*	*	*	*	Good	Good	Good	Good
Mautner <i>et al</i> [55]	*	No	*	*	*	*	*	*	*	Good	Good	Good	Good
Gray <i>et al</i> [28]	*	*	No	*	No	*	*	*	*	Good	Good	Good	Good
Gray <i>et al</i> [29]	*	*	No	*	No	*	*	*	*	Good	Good	Good	Good
Howe <i>et al</i> [62]	*	*	*	*	*	*	*	*	*	Good	Good	Good	Good
Miles <i>et al</i> [45]	*	No	No	*	No	*	*	*	*	Fair	Good	Good	Fair
Mew <i>et al</i> [46]	*	No	No	*	No	*	*	No	*	Fair	Fair	Good	Fair
Madu and Roos[31]	*	*	*	*	*	*	*	*	*	Good	Good	Good	Good
Suttora <i>et al</i> [36]	*	*	*	*	*	*	*	*	*	Good	Good	Good	Good
Korja <i>et al</i> [56]	*	*	No	*	No	*	*	*	*	Good	Good	Good	Good
Younger <i>et al</i> [47]	*	No	No	*	No	*	*	*	*	Fair	Good	Good	Good

¹Domain scored: 0-1 (Poor); 2 (Fair); 3+ (Good).

²Domain scored: 0 (Poor); 1 (Fair); 2+ (Good).

*: Domain acceptable.

Anxiety and Depression Scale (HADS-A), Centre for Epidemiological Studies Depression, Beck's Depression Inventory and Profile of Mood States as their assessment tool. The total scores of these scales are different, and the mean difference of the studies are not compatible. Four studies reported on anxiety using STAI and HADS-A as their mental health assessment of choice. The overall SMD of Anxiety was 0.63 with 95%CI of 0.35-0.91. $I^2 = 86.83\%$ also indicated high heterogeneity among anxiety group.

Stress and parent stress index

Studies reporting stress used the Parent Stress Index assessment on three separate timepoints along with the Professional Personality Questionnaire and the Perceived Stress Measure. The total scores of these scales in each meta-analysis are different, and the mean difference of the studies are not compatible. The overall SMD of Stress was 0.47 with 95%CI 0.22-0.72. $I^2 = 77.55\%$ indicated high heterogeneity among stress group.

Posttraumatic stress disorder

Suttora *et al* [36] was the only study reporting on posttraumatic stress disorder (PTSD). The reported

Table 4 Characteristics of the 12 studies included within the meta-analysis for depression

ID	Ref.	Study type	Country	Sample size	Outcome assessment
1	Brandon <i>et al</i> [39]	Descriptive study	United States	60	EPDS
2	Bouras <i>et al</i> [34]	Cross-sectional study	Greece	200	BDI
3	Cheng <i>et al</i> [13]	Cohort study	United States	5350	CES-D
4	Drewett <i>et al</i> [50]	Cross-sectional study	United Kingdom	10838	EPDS
5	Gambina <i>et al</i> [33]	Case-control study	Italy	84	EPDS
6	Gray <i>et al</i> [28,29]	Cross-sectional study	Australia	217	EPDS
7	Gueron-Sela <i>et al</i> [30]	Cross-sectional study	Israel	103 (Bedouin); 230 (Jewish)	CES-D
8	Gungor <i>et al</i> [35]	Case-control study	Turkey	299	BDI
9	Ionio <i>et al</i> [52]	Longitudinal study	Italy	50	Profile of mood states
10	Madu and Roos[31]	Cross-sectional study	South Africa	100	EPDS
11	Mautner <i>et al</i> [55]	Prospective, longitudinal study	Australia	61	EPDS
12	Pace <i>et al</i> [32]	Longitudinal, prospective cohort study	Australia	230	CES-D

EPDS: Edinburgh Postnatal Depression Scale; BDI: Beck's Depression Inventory; CES-D: Centre for Epidemiological Studies Depression.

Table 5 Characteristics of the 5 studies included within the meta-analysis for anxiety

ID	Ref.	Study type	Country	Sample size	Outcome assessment
1	Brandon <i>et al</i> [39]	Descriptive study	United States	60	STAI-S
2	Bouras <i>et al</i> [34]	Cross-sectional study	Greece	200	STAI-T; STAI-S
3	Gambina <i>et al</i> [33]	Case-control study	Italy	84	STAI-T; STAI-S
4	Gungor <i>et al</i> [35]	Case-control study	Turkey	299	STAI-T; STAI-S
5	Pace <i>et al</i> [32]	Longitudinal, prospective cohort study	Australia	230	HADS-A

STAI: State-Trait Anxiety Inventory.

Table 6 Characteristics of the 5 studies included within the meta-analysis for stress

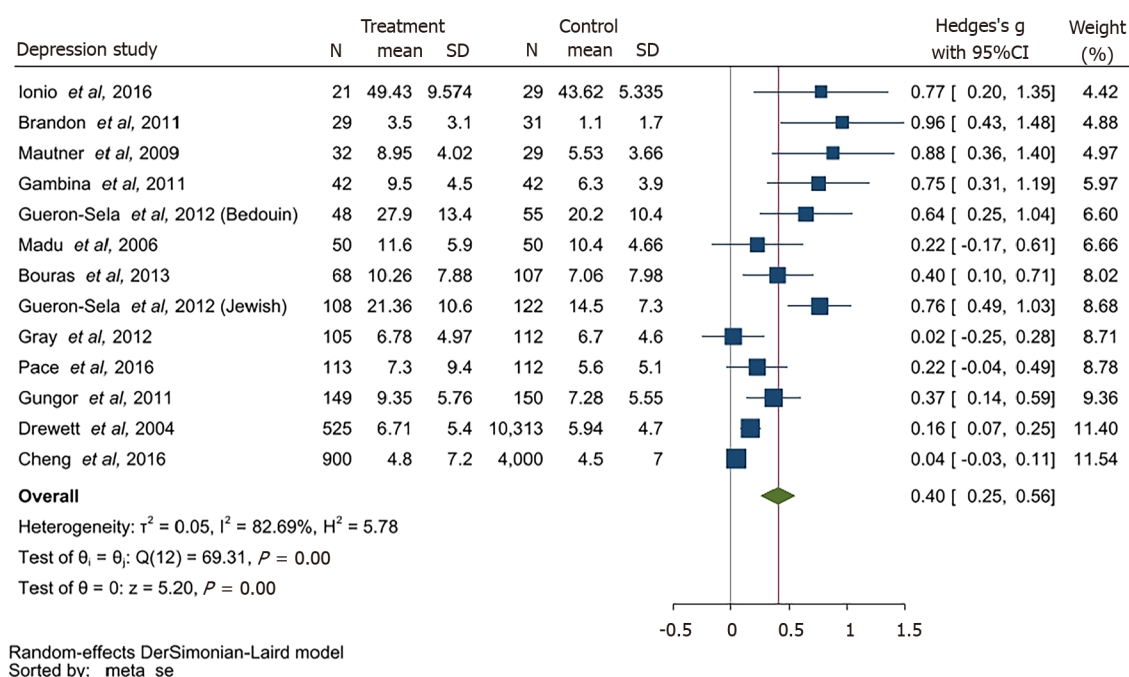
ID	Ref.	Study type	Country	Sample size	Outcome assessment
1	Brandon <i>et al</i> [39]	Descriptive study	United States	60	PPQ
2	Gambina <i>et al</i> [33]	Case-control study	Italy	84	PSM
3	Gray <i>et al</i> [28,29]	Cross-sectional study	Australia	217	PSI-SF
4	Howe <i>et al</i> [62]	Cross-sectional study	Taiwan	420	PSI-Chinese version
5	Suttora <i>et al</i> [36]	Descriptive study	Italy	243	PSI-SF

PPQ: Professional Personality Questionnaire; PSM: Perceived Stress Measure; PSI: Parent Stress Index.

mean and SD of the symptoms of PTSD were transformed to SMD. The SMD was 1.12 with a 95%CI of 0.84-1.40 indicated significantly high PTSD symptoms among BAME PTB women than the term mothers.

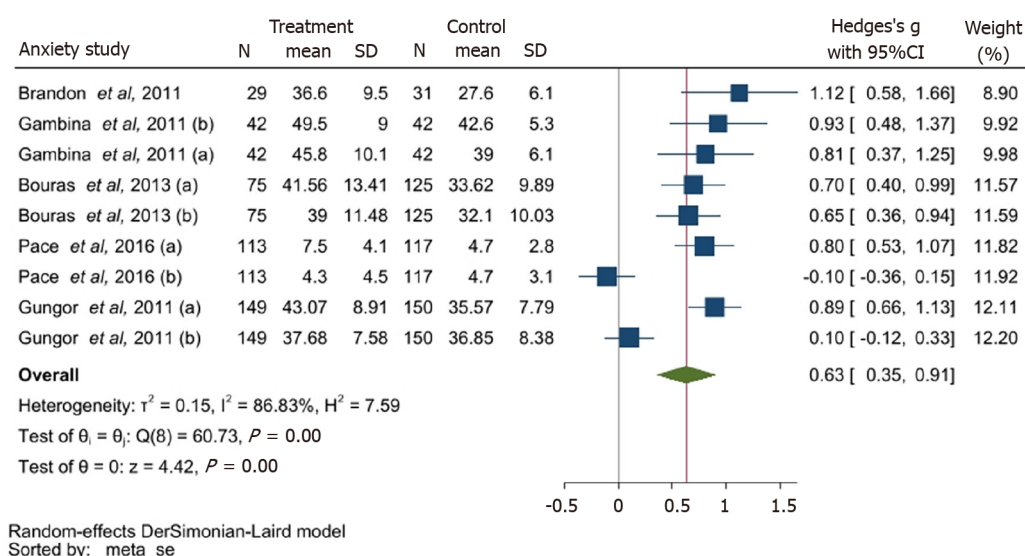
Assessment of mental health at differing time-points for depression, anxiety and stress were evaluated between full term and PTB mothers. Different mean scores and SD values were reported across the included studies. The dataset was unified with converting the mean difference to the SMD and demonstrated in the forest plots (Figures 2-4).

This meta-analysis identified depression to be a primary mental health outcome among PTB mothers and significantly higher prevalence rates of depression was reported in PTB mothers compared with full-term mothers.



DOI: 10.5498/wjp.v12.i9.1233 Copyright ©The Author(s) 2022.

Figure 2 Forest plot for depression (full term vs preterm birth). CI: Confidence interval.



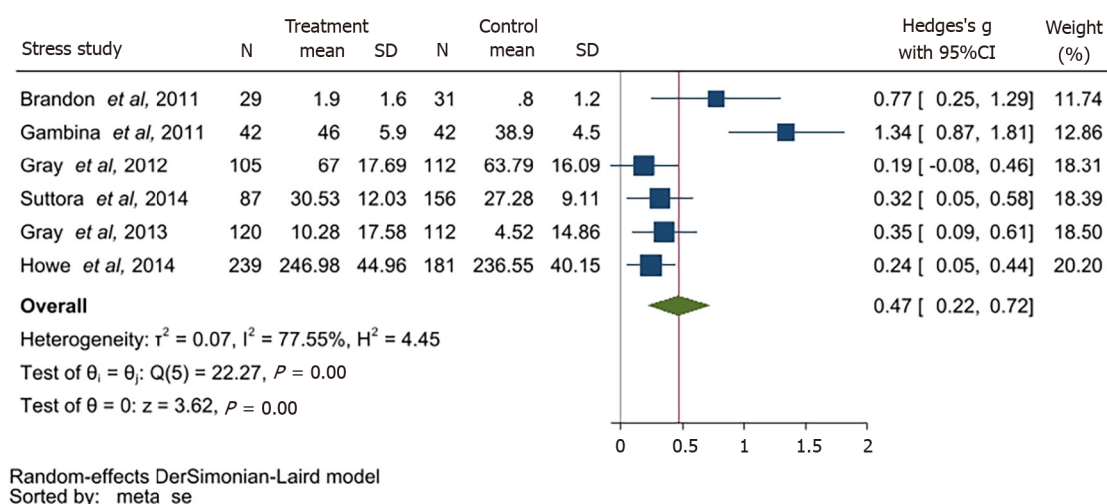
DOI: 10.5498/wjp.v12.i9.1233 Copyright ©The Author(s) 2022.

Figure 3 Forest plot for anxiety (full term vs preterm birth). CI: Confidence interval.

Meta-regression analysis

Of the 16 studies included within the meta-regression analysis for depression, 5 reported mean scores and SD of the mental health questionnaires used at parturition. Four studies recorded the mean and SD at 1-mo post-delivery, while another four studies reported the same at 1 mo to 8 mo post-delivery. To eliminate the heterogeneity, these studies were adjusted by timepoints (Figure 5).

The estimated intercept for depression is 0.629 with a 95%CI of 0.455-0.804. This indicates the mental health assessment scores within the PTB group were significantly higher than full-term group at the birth. The coefficient of the covariate time was -0.061 with a 95%CI of -0.094, -0.028 indicating that the coefficients of time were significantly lower than 0. This is indicative of a reduction depression symptoms post-delivery. Heterogeneity decreased from 82.69% to 79.82%, and the differences of assessment time points could explain the 31.75% of the heterogeneity identified.



DOI: 10.5498/wjpv12.i9.1233 Copyright ©The Author(s) 2022.

Figure 4 Forest plot for stress (full term vs preterm birth). CI: Confidence interval.

Random-effects meta-regression					
Method: DerSimonian-Laird					
Number of obs = 16					
Residual heterogeneity:					
tau2 = 0.04072					
I2 (%) = 79.82					
H2 = 4.96					
R-squared (%) = 31.75					
Wald chi2(1) = 13.41					
Prob > chi2 = 0.0002					
_meta_es	Coef.	Std. Err.	z	P> z	[95% Conf. Interval]
tvalue	-0.0609896	0.0166533	-3.66	0.000	-0.0936296 -0.0283497
_cons	0.6294887	0.0889261	7.08	0.000	0.4551968 0.8037807
Test of residual homogeneity: Q_res = chi2(14) = 69.38 Prob > Q_res = 0.0000					

DOI: 10.5498/wjpv12.i9.1233 Copyright ©The Author(s) 2022.

Figure 5 Meta regression conducted by time for depression.

Nine studies that reported anxiety were included in the meta-regression (Figure 6). The estimated intercept was 0.772 with a 95%CI of 0.500-1.045 which indicates the mental health assessment scores of the PTB group are significantly higher than the scores of full-term group. The coefficient of the covariate time is -0.136 with 95%CI of -0.262, -0.010 indicating that the symptoms of anxiety gradually disappeared among PTB group following birth. Heterogeneity reduced from 86.83% to 80.29%. The differing time points in administering the mental health assessment could explain 34.91% of the heterogeneity (Figure 6).

Following the reduction of heterogeneity by way of the meta-regression method, the statistical conclusions demonstrate a statistical significance where the prevalence of depression among BAME women with PTB was higher in comparison to BAME women who delivered at full-term. The I^2 was almost 80% which indicates a high heterogeneity.

The pooled SMD within the studies using PTB mothers from United States was 0.46 with a 95%CI of -0.43 - 1.35. The pooled SMD within Australia was 0.44 with a 95%CI of 0.07-0.81. I^2 of these two subgroups indicated a high heterogeneity: 91.14% and 87.79% respectively. The assessment timepoints of these two groups have a significant difference, which could be the source of the high heterogeneity. As there were only 2 studies, a meta-regression of the timepoints could not be completed.

Subgroup analysis

A subgroup analysis of depression and anxiety was completed using geographical location as demonstrated in Supplementary Figures 1-3. For depression, the pooled SMD within Greece, Italy, Israel and Turkey was 0.57 with a 95%CI of 0.4-0.74. The pooled SMD within United Kingdom was 0.12 with a 95%CI of 0.03-0.21. P was denoted to be indicating a lack of heterogeneity as demonstrated in Supplementary Figure 1.

Random-effects meta-regression					
Method: DerSimonian-Laird					
Number of obs = 9					
Residual heterogeneity:					
tau2 = 0.1002					
I2 (%) = 80.29					
H2 = 5.07					
R-squared (%) = 34.91					
Wald chi2(1) = 4.50					
Prob > chi2 = 0.0338					
_meta_es	Coef.	Std. Err.	z	P> z	[95% Conf. Interval]
tvalue	-0.1359486	0.0640626	-2.12	0.034	-0.261509 -0.0103882
_cons	0.7723931	0.1391725	5.55	0.000	0.4996201 1.045166
Test of residual homogeneity: Q_res = chi2(7) = 35.51 Prob > Q_res = 0.0000					

DOI: 10.5498/wjp.v12.i9.1233 Copyright ©The Author(s) 2022.

Figure 6 Meta regression conducted by time for anxiety.

Although a meta-regression was not conducted for the pooled SMD within the studies with PTB mothers from United States, a subgroup analysis demonstrated that the high heterogeneity could be attributed to the differences of time points of the mental health assessments.

Of the 39 studies included in the systematic review, thirteen studies were from North America[1,3,6,8,12,19,21,25,27,29,34,35,39], thirteen from Europe[2,5,7,10,13,18,20,22,23,28,30,37,38], six studies from Australia[9,11,17,24,31,32], three from Asia[15,16,33], three from the Middle East[4,14,26] and one from South Africa[36]. These have been demonstrated in Table 1. Depression was the most frequently reported theme across all the studies, followed by anxiety and stress (Table 7). A variety of diagnostic tools were used across the studies, which reflects the diverse clinical practices across different countries.

Based on the identified data, PTB women from the Mediterranean region (Greece, Italy, Turkey and Israel) may be more prone to depressive symptoms in comparison to BAME women with PTB in Australia and the United States. The pooled odds ratio (OR) and its respective 95% CIs appear credible for PTB BAME women experiencing a significantly higher prevalence of depression post-parturition, although the mental health symptoms appear to reduce over time.

The pooled SMD of anxiety within United States was 1.12 with 95%CI of 0.58-1.66 whilst the pooled SMD of the Mediterranean region (Greece, Italy, Turkey) was 0.66 with a 95%CI of 0.37-0.95. The pooled SMD of Australia was 0.35 with a 95%CI of -0.54 -1.23 (Supplementary Figure 2). BAME women with PTB from Australia appear to have less symptoms of anxiety and the main source of the high heterogeneity in subgroup was still from the time points.

In relation to assessing stress, Gray *et al*[28,29] conducted mental health assessments at months 4 and 12, post-parturition. Whilst this appears to be useful follow-up data to evaluate, the outcome measures were analysing 2 different mental health variables of parenting stress and general stress. As shown in Supplementary Figure 4 four studies reported on parenting stress and 2 of them reported on the overall state of stress. The subgroup analysis conducted indicated a lack of heterogeneity between these studies. Mild heterogeneity was identified within the studies included in the stress group alone. The pooled SMD within the parenting group was 0.27 with a 95%CI of 0.15-0.39. In the stress group, the pooled SMD was 1.07 with a 95%CI of 0.51-1.62. Additionally, the symptoms of parenting stress were less severe within the PTB group (Table 7 and Supplementary Figures 4 and 5).

Sensitivity analysis

Studies reporting depression[32] demonstrated women with severe PTB indicated a high SMD at parturition indicating elevated levels of depressive symptoms (Supplementary Figure 6). A combination of worries about very premature babies and the trauma following parturition may further attribute to elevated depressive symptoms. Only Pace *et al*'s study conducted the assessment of questionnaires among the very PTB women group at the birth[32]. Women with a more severe PTB may indicate higher scores of depression, therefore this study was excluded from the sensitivity analysis. After removing Pace *et al*'s study, the heterogeneity in Australia reduced from an I^2 of 87.79% to 52.99%[32]. Therefore, conclusions were adjusted from a pooled SMD of 0.42 (with 95%CI: 0.28-0.56) to 0.34 (with 95%CI: 0.22-0.46). Despite this numerical change, an elevated level of depression among BAME PTB women were visible in comparison to those with a full-term pregnancy (Supplementary Figure 6).

Based on the anxiety studies, Gungor *et al*[35] in particular, reported extremely small OR and a sensitivity analysis was conducted excluding one possible outlier study, as indicated by Supplementary Figure 7. The heterogeneity identified without Gungor *et al*[35] was 0%. Therefore, this study in particular appears to have design and methodological issues limiting generalisability of the findings. As a result, conclusions were amended from an SMD of 0.63 (with 95%CI: 0.35-0.91) to 0.7 (with 95%CI: 0.42-0.98). Therefore, despite the amendment[35], a significantly high prevalence among BAME PTB

Table 7 The thematic synthesis

Themes	Population group
	Women who had a preterm birth
Depression	+++++
Stress	+++++
Anxiety	+++++
Parenting stress	++++
State anxiety	++++
Trait anxiety	++++
Psychological distress	++
Trauma-related stress	++
Psychological problem	++
Post-traumatic stress disorder	+

women is observed ([Supplementary Figure 7](#)).

Publication bias

For studies with a small sample size, the pooled OR is significantly higher based on the funnel plots, therefore, these would be prone to publication bias. To assess this further, Egger's tests were conducted for all studies included within the meta-analysis.

Funnel plots developed within this sample intuitively revealed publication bias ([Supplementary Figures 8-10](#)). Egger's test of meta-analysis studies for depression (P value = 0.001), indicated the small sample sizes are a source of publication bias ([Supplementary Figure 11](#)). The pooled SMD 0.4 and associated CI (0.25-0.56) may have been overrated. Therefore, the TAF method was used to further improve the statistical conclusions (as indicated in [Supplementary Figures 11 and 12](#)). The asymmetry of the funnel plot demonstrates the studies could minimally impact publication bias.

Based on the findings demonstrated in [Supplementary Figures 11](#), 3 further studies were imputed to correct the effect size of small studies. The small study effect was eliminated with using the imputation method, and publication bias was corrected (demonstrated in [Supplementary Figure 12](#)). The Hedge's g ([Supplementary Figure 12](#)) was significantly higher than 0 among the meta-analysis based and imputed studies. After imputing the 3 new studies and removing the publication bias, the statistical conclusion was adjusted from a SMD of 0.4 with 95%CI of 0.25-0.56 to 0.32 (95%CI of 0.18-0.47). Despite the adjustments of publication bias, there was significant evidence that the prevalence of depression among BAME PTB women were higher than those who gave birth at full-term ([Supplementary Figures 12 and 13](#)).

Egger's test P value for anxiety was 0.198, indicating no publication bias exists (demonstrated in [Supplementary Figure 14](#)). Egger's test P value for stress was 0.036, indicating a slight publication bias among the studies (demonstrated in [Supplementary Figure 15](#)).

Ascertainment bias was considered within the context of the meta-analysis. Due to the lack of required details such as the proportion of different ethnic groups and mental health assessments, it was not possible to assess this numerically. However, within the context of all the studies included in the systematic review portion of the study, it is evident, there could be ascertainment bias as the sampling methods used in the studies comprise of patients who may or may not have a higher or lower probability of reporting mental health symptomatology. These studies may be subjected to selection bias due to the lack of consistency around frequency of administering the relevant mental health instruments. In essence, studies should have had samples with all ethnicities and races (including Caucasians) to better evaluate the true mental health impact due to PTB. Furthermore, the sample population should have received a standardised set of mental health assessments to determine anxiety, depression, PTSD and other mental illnesses at specific time points during the pre and post-natal period since it is common to have undiagnosed mental health conditions. In addition to this, some studies have had attempted to evaluate the mental health impact after birth at 8 mo although this lacks scientific justification and thereby, epidemiologically insignificant. Furthermore, due to the lack of consistency in assessing and reporting mental health outcomes post-natally, attrition bias may be present. However, a definitive conclusion could not be attained numerically due to limitations in the sample sizes reported.

DISCUSSION

In this meta-analysis, the prevalence rate of depression among PTB BAME mothers was identified to be significantly higher than in full-term mothers with an OR of 1.50 and 95% CI of 29%-74%. Depressive symptoms in mothers and fathers of premature infants were frequently reported in the post-natal period[13]. There may be many causes for this including the social support. Cheng *et al*[13] reported that mothers with non-resident fathers experienced higher rates of depressive symptoms, as did the non-resident fathers included in this study. Lack of social support is likely to be further exacerbated by prolonged hospitalisation of preterm infants and the unique challenges faced by infants the premature following hospital discharge. Additionally, mothers may be admitted to hospital prior to delivery, in some cases for weeks, due to conditions like severe preeclampsia or PROM associated with PTB and hence they may be more isolated than mothers of term infants.

This study defined three sub-groups; assessment timepoint < 1 mo, 1-8 mo and > 8 mo, and indicated that shorter the time after giving birth, the more significant was the depression. Therefore, the provision of mental health support following the immediate post-partum period would benefit patients. Within the first month after delivery, depressive symptoms were significant among PTB mothers; however, by 8 mo and after 8 mo, the increased prevalence of depression was only slightly significant among PTB mothers (OR of 1.17 with 95% CI of 8%-27%; OR of 1.06 with a CI of 1%-12%).

Separation of the infant and the mother is an important and frequent occurrence in PTB, which may explain why mothers of preterm infants are at increased risk of depression. Furthermore, maternal comorbidities including preeclampsia or recovery from an obstetrics intervention such as a caesarean section may also impact on a mother's ability to bond with her new-born, who maybe in a neonatal intensive care unit (NICU) or special care unit. One study from South Africa[31] demonstrated a high prevalence of depression in mothers of both full term and preterm infants from lower socioeconomic groups. Women from lower socioeconomic groups are likely exposed to greater stressors relevant to the scarcity of resources[31], affecting their mental health.

Adjusting to parenthood is important for all parents. In the case of PTB mothers may not have sufficient time to prepare, which may lead to maternal stress[47]. Familiarity with the situation, possibly by having had a previous preterm infant, and predictability of birth outcome have been found to reduce stress and anxiety[47]. Medically indicated preterm delivery may have been planned, for example, in multiple pregnancies or mothers with diabetes and thus, predictable. Therefore, it is possible that those mothers experience less stress than those who give birth following an acute spontaneous onset preterm labor. In addition to mental preparation, the former group of parents of preterm infants may have had time to visit the NICU and speak with neonatologists to gain further information and this may reduce anxiety following birth.

Parenting stress is found to be higher in mothers of preterm infants at one year[29]. This relationship may be predicted by maternal depression as well as impaired parent and infant interactions[29]. Interestingly, parenting stress is not significantly different in mothers of preterm or full-term infants in early infancy[28], suggesting all mothers require support in the immediate post-partum period to reduce parental mental health but prolonged provision of such support is important in managing PTB mothers.

Increased and unexpected medical interventions associated with PTB, including painful corticosteroid injections or the use of magnesium sulphate. Mothers may have additional intimate examinations and the need for emergency procedures such as caesarean sections, which may negatively impact a mother's physical and mental health. These may exacerbate the underlying stress faced by a PTB mother and her partner; their feelings of anxiety and stress are compounded in some circumstances by the lack of preparedness and loss of control. Together, these experiences may explain why mothers and fathers of preterm infants have greater levels of stress[29] and depression[13].

Cheng *et al*[13] conducted the comparison between fathers and mothers suffering as a result of PTB among Hispanic, Non-Hispanic White, Non-Hispanic Black and Non-Hispanic as well as other races. Gueron-Sela *et al*[30] on the other hand focused on depression and stress symptomatology among Bedouin and Jewish women. Based on Gueron-Sela *et al*'s findings, Bedouin women experienced the highest level of depression[30]. In comparison to these, Rogers *et al*[42] compared the Caucasian and African American PTB patients that indicated a lack of significant differences between the two groups. Ballantyne *et al*[37] conducted their study on Canadian PTB women which included immigrant women. However, immigrant's status had no contribution to the differences in mental health disorders or symptomatology.

The mental health impact on those with PTB could be exacerbated due to understandable feelings of helplessness and hopelessness, and low mood is commonly reported by these women. On the contrary, Jotzo and Poets[14] demonstrated PTB could lead to traumatising effects on parents with 49% of mothers reporting traumatic reactions even after a year. Muller-Nix *et al*[15] demonstrated this correlation of traumatic stress and psychological distress between mother and child. Pierrehumbert *et al* [16] indicated post-traumatic stress symptoms after PTB was a predictor of a child's eating and sleeping problems. Similarly, Solhaug *et al*[17] found that parents, who had hospital stays following a PTB requiring NICU, demonstrated high levels of psychological reactions that required treatment.

Perinatal mental health around suicidality or suicidal ideation should be considered as a priority to be addressed among BAME women, which is vital in particular within the United Kingdom. BAME women are at a higher risk of suffering from mental health disorder in comparison to Caucasian women in the United Kingdom and they are less likely to access healthcare support. This is particularly true for women of Pakistani and Indian background. Additionally, Anderson *et al*[63] reported prevalence and risk of mental health disorders among migrant women. These factors should be considered by those treating clinical groups. In addition to the timepoint, we also considered the impact of population. It remains unclear whether the prevalence rate of depression varies after PTB in different ethnic groups. Gulamani *et al*[64] have found the depressive symptoms of women with PTB may be associated with race and culture, but further evidence is lacking. Due to the higher risk of mental health symptoms around the time of PTB, this data may help the health service providers to focus on delivering timely support to the BAME mothers with PTB.

Interestingly, alcohol consumption and substance abuse that are linked to worsening of mental health and poor pregnancy outcomes were not identified within the literature pertinent to BAME population in the scope of this study[65-70].

Similarly, substance abuse among pregnant women increases the risk of PTB and the association of mental illness among the BAME population[71,72]. Holden *et al*[72] demonstrated self-reported depressive symptoms associated with a group of 602 BAME and Caucasian pregnant women that had substance abuse and were subjected to intimate partner violence. This study used the EPDMS which demonstrated elevated levels of depressive illness that required clinical diagnoses and treatments at a mental health care facility. Additionally, women abuse screening tool was used to evaluate relationship issues and those needing appropriate support was referred to social services[71,72]. There is limited information available around substance abuse and partner violence associated with mental health among BAME women. Research conducted within this area appears to lack consistency and this makes systematic evaluation of cultural paradigms relevant to BAME women and the direct association with PTB and mental health difficult, given the complexity of these issues.

Limitations

Heterogeneity of studies gathered within this review challenged the evidence synthesis. Studies identified reported on mental health outcomes without a clear distinction mostly between mental health symptomatology and psychiatric comorbidities. Timelines for administering mental health instruments and other tools such as talking therapies were not unified across all studies. Collectively, these are design and methodological flaws influencing heterogeneity. Studies were excluded if they discussed quality of life as this does not demonstrate the identification or reporting of mental health outcomes such as pre or postnatal depression, anxiety, psychosis and other mood disorders.

CONCLUSION

PTB has a significant association with depression, anxiety and stress symptoms in new mothers during the immediate postpartum period. The mental health symptoms are more significant in very preterm mothers than non-very preterm mothers. However, the effect of PTB on the incidence of depression and other mental health outcomes is unclear among different ethnic groups and therefore more studies are needed to explore this.

This study identified a methodological gap to evaluate disease sequelae between PTB and mental health among BAME populations. This important facet should be considered in future research studies, which requires the involvement of multidisciplinary teams. Most included studies did not indicate a publicly available protocol, and availability of such would have assisted in reducing potential biases during study selection in this systematic review to improve sampling techniques and the subsequent data analysis. Future PTB research will be benefited by Population Intervention (s) Comparator and Outcome (s) based reporting to address true mental health impact within BAME populations. The evidence gap that exists from multi-stakeholder needs to be filled to improving patient care. The development of a classification framework for healthcare systems to better assess BAME women at risk with PTB and mental health outcomes would be beneficial. Including cultural adaptation methods as well as training of healthcare professionals will help to manage patients' expectations with the required sensitivities. Similarly, cost-effectiveness and long-term sustainability should be considered when developing a suitable framework.

It is also vital to acknowledge health inequalities and avoidable disparities should be addressed as a matter of urgency. Maternal care should have integrated methods of working with mental health care professionals and a culturally adapted and sensitive specialist service to support BAME women after a PTB may improve the patient outcomes. It is important to improve quality of care received by vulnerable BAME women such as those who are refugees or migrants and do not speak English. Equally, mental health services should work more cohesively within the women's health in the community setting and training should be offered to all healthcare professionals to provide a person-alised care.

ARTICLE HIGHLIGHTS

Research background

Preterm birth (PTB) is a complex clinical condition contributing to significant maternal morbidity and a leading cause of neonatal morbidity and mortality. Therefore, potential mental health impact of PTB on women is an important clinical and social sequel that requires further understanding.

Research motivation

Existing research primarily reports the mental health impact of women with PTB within the Caucasian population. There remains a paucity of research on the ethnic minority populations. Thus, we aimed to assess the current research gap relevant to ethnic minorities to inform future research that could aid with improving patient and clinical reported outcomes.

Research objectives

(1) We aimed to describe the prevalence of mental health conditions and/or symptoms reported by women with PTB experiences within the ethnic minorities; and (2) We also extended our study to report the commonly used methods of mental health assessments to characterise the identified mental health conditions and/or symptoms with the pooled sample.

Research methods

A systematic methods protocol was developed, peer reviewed and published in PROSPERO (CRD42040210863). Multiple databases were used to extract relevant data for a meta-analysis. A trim and fill method was used to report publication bias in addition to an Egger's test. I^2 was used to report heterogeneity.

Research results

From a total of 3516 studies identified, we included 39 studies that met the inclusion criteria. Depression was the most commonly reported mental illness among PTB mothers in comparison to those who had a full-term pregnancy. The subgroup analysis demonstrated depression to be time-sensitive relative to the PTB. Stress and anxiety were also prevalent among PTB mothers as opposed to full-term mothers.

Research conclusions

There appears to be a mental health impact among PTB mothers from ethnic minorities. This is an important aspect to consider for maternity care services to improve the quality care provided to PTB women.

Research perspectives

Future researchers should consider inclusion of all ethnicities and races to ensure generalizability of any findings to all mothers that could truly improve maternity care services.

ACKNOWLEDGEMENTS

The authors acknowledge support from Southern Health NHS Foundation Trust, University College London and Liverpool Women's hospital. We would like to acknowledge Mrs Haque N who inspired the discussion of BAME groups within the context of this study. This paper is part of the multifaceted ELEMI project that is sponsored by Southern Health NHS Foundation Trust and in collaboration with the University of Liverpool, Liverpool Women's Hospital, University College London, University College London NHS Foundation Trust, University of Southampton, Robinson Institute-University of Adelaide, Ramaiah Memorial Hospital (India), University of Geneva and Manchester University NHS Foundation Trust.

FOOTNOTES

Author contributions: Delanerolle G and Hapangama DK developed the systematic review protocol and embedded this within the ELEMI project's evidence synthesis phase; Delanerolle G, Zeng Y, Phan T, Shi JQ and Hapangama DK wrote the first draft of the manuscript; Delanerolle G, Phan T, Zeng Y, Hapangama DK, Shi JQ and Phiri P shared database searches, study selection and extraction for analysis; Zeng Y, Shi JQ and Delanerolle G conducted the analysis; all authors critically appraised and commented on previous versions of the manuscript; all authors read and approved the final manuscript.

Conflict-of-interest statement: Phiri P has received research grant from Novo Nordisk, and other, educational from Queen Mary University of London, other from John Wiley & Sons, other from Otsuka, outside the submitted work.

Rathod S reports other from Janssen, Lundbeck and Otsuka outside the submitted work. All other authors report no conflict of interest. The views expressed are those of the authors and not necessarily those of the NHS, the National Institute for Health Research, the Department of Health and Social Care or the Academic institutions.

PRISMA 2009 Checklist statement: The authors have read the PRISMA 2009 Checklist, and the manuscript was prepared and revised according to the PRISMA 2009 Checklist.

Open-Access: This article is an open-access article that was selected by an in-house editor and fully peer-reviewed by external reviewers. It is distributed in accordance with the Creative Commons Attribution NonCommercial (CC BY-NC 4.0) license, which permits others to distribute, remix, adapt, build upon this work non-commercially, and license their derivative works on different terms, provided the original work is properly cited and the use is non-commercial. See: <https://creativecommons.org/Licenses/by-nc/4.0/>

Country/Territory of origin: United Kingdom

ORCID number: Gayathri Delanerolle 0000-0002-9628-9245; Yu-Tian Zeng 0000-0002-9902-0137; Peter Phiri 0000-0001-9950-3254; Thuan Phan 0000-0002-7166-8345; Nicola Tempest 0000-0003-3633-1592; Paula Busuulwa 0000-0002-3821-1626; Ashish Shetty 0000-0002-7441-6936; Vanessa Raymont 0000-0001-8238-4279; Shanaya Rathod 0000-0001-5126-3503; Jian-Qing Shi 0000-0002-2924-1137; Dharani K Hapangama 0000-0003-0270-0150.

Corresponding Author's Membership in Professional Societies: Nursing & Midwifery Council (NMC), 9811393; British Association for Behavioural & Cognitive Psychotherapies (BABCP), 060632.

S-Editor: Gao CC

L-Editor: A

P-Editor: Wu RR

REFERENCES

- 1 **Misund AR**, Nerdrum P, Diseth TH. Mental health in women experiencing preterm birth. *BMC Pregnancy Childbirth* 2014; **14**: 263 [PMID: 25107462 DOI: 10.1186/1471-2393-14-263]
- 2 **Saigal S**, Doyle LW. An overview of mortality and sequelae of preterm birth from infancy to adulthood. *Lancet* 2008; **371**: 261-269 [PMID: 18207020 DOI: 10.1016/S0140-6736(08)60136-1]
- 3 **Chen KH**, Chen IC, Yang YC, Chen KT. The trends and associated factors of preterm deliveries from 2001 to 2011 in Taiwan. *Medicine (Baltimore)* 2019; **98**: e15060 [PMID: 30921237 DOI: 10.1097/MD.00000000000015060]
- 4 **Manuck TA**. Racial and ethnic differences in preterm birth: A complex, multifactorial problem. *Semin Perinatol* 2017; **41**: 511-518 [PMID: 28941962 DOI: 10.1053/j.semperi.2017.08.010]
- 5 **Schaaf JM**, Liem SM, Mol BW, Abu-Hanna A, Ravelli AC. Ethnic and racial disparities in the risk of preterm birth: a systematic review and meta-analysis. *Am J Perinatol* 2013; **30**: 433-450 [PMID: 23059494 DOI: 10.1055/s-0032-1326988]
- 6 **Romero R**, Espinoza J, Kusanovic JP, Gotsch F, Hassan S, Erez O, Chaiworapongsa T, Mazor M. The preterm parturition syndrome. *BJOG* 2006; **113** Suppl 3: 17-42 [PMID: 17206962 DOI: 10.1111/j.1471-0528.2006.01120.x]
- 7 **Sheikh IA**, Ahmad E, Jamal MS, Rehan M, Assidi M, Tayubi IA, AlBasri SF, Bajouh OS, Turki RF, Abuzenadah AM, Damanhoury GA, Beg MA, Al-Qahtani M. Spontaneous preterm birth and single nucleotide gene polymorphisms: a recent update. *BMC Genomics* 2016; **17**: 759 [PMID: 27766960 DOI: 10.1186/s12864-016-3089-0]
- 8 **Ehn NL**, Cooper ME, Orr K, Shi M, Johnson MK, Caprau D, Dagle J, Steffen K, Johnson K, Marazita ML, Merrill D, Murray JC. Evaluation of fetal and maternal genetic variation in the progesterone receptor gene for contributions to preterm birth. *Pediatr Res* 2007; **62**: 630-635 [PMID: 17805208 DOI: 10.1203/PDR.0b013e3181567bfc]
- 9 **Manuck TA**, Major HD, Varner MW, Chettier R, Nelson L, Esplin MS. Progesterone receptor genotype, family history, and spontaneous preterm birth. *Obstet Gynecol* 2010; **115**: 765-770 [PMID: 20308837 DOI: 10.1097/AOG.0b013e3181d53b83]
- 10 **Manuck TA**, Lai Y, Meis PJ, Dombrowski MP, Sibai B, Spong CY, Rouse DJ, Durnwald CP, Caritis SN, Wapner RJ, Mercer BM, Ramin SM. Progesterone receptor polymorphisms and clinical response to 17-alpha-hydroxyprogesterone caproate. *Am J Obstet Gynecol* 2011; **205**: 135.e1-135.e9 [PMID: 21600550 DOI: 10.1016/j.ajog.2011.03.048]
- 11 **Li Y**, Quigley MA, Macfarlane A, Jayaweera H, Kurinczuk JJ, Hollowell J. Ethnic differences in singleton preterm birth in England and Wales, 2006-12: Analysis of national routinely collected data. *Paediatr Perinat Epidemiol* 2019; **33**: 449-458 [PMID: 31642102 DOI: 10.1111/ppe.12585]
- 12 **Public Health England**. Maternity high impact area: Reducing the inequality of outcomes for women from Black, Asian and Minority Ethnic (BAME) communities and their babies. Public Health England. [cited 8 April 2021]. In: Public Health England [Internet]. Available from: https://assets.publishing.service.gov.uk/government/uploads/system/uploads/attachment_data/file/942480/Maternity_high_impact_area_6_Reducing_the_inequality_of_outcomes_for_women_from_Black_Asian_and_Minority_Ethnic_BAME_communities_and_their_babies.pdf
- 13 **Cheng ER**, Kotelchuck M, Gerstein ED, Taveras EM, Poehlmann-Tynan J. Postnatal Depressive Symptoms Among Mothers and Fathers of Infants Born Preterm: Prevalence and Impacts on Children's Early Cognitive Function. *J Dev Behav Pediatr* 2016; **37**: 33-42 [PMID: 26536007 DOI: 10.1097/DBP.0000000000000233]
- 14 **Jotzo M**, Poets CF. Helping parents cope with the trauma of premature birth: an evaluation of a trauma-preventive

- psychological intervention. *Pediatrics* 2005; **115**: 915-919 [PMID: [15805364](#) DOI: [10.1542/peds.2004-0370](#)]
- 15 **Muller-Nix C**, Forcada-Guex M, Pierrehumbert B, Jaunin L, Borghini A, Ansermet F. Prematurity, maternal stress and mother-child interactions. *Early Hum Dev* 2004; **79**: 145-158 [PMID: [15324994](#) DOI: [10.1016/j.earlhumdev.2004.05.002](#)]
- 16 **Pierrehumbert B**, Nicole A, Muller-Nix C, Forcada-Guex M, Ansermet F. Parental post-traumatic reactions after premature birth: implications for sleeping and eating problems in the infant. *Arch Dis Child Fetal Neonatal Ed* 2003; **88**: F400-F404 [PMID: [12937044](#) DOI: [10.1136/fn.88.5.f400](#)]
- 17 **Solhaug M**, Bjørk IT, Sandtrø HP. Staff perception one year after implementation of the the newborn individualized developmental care and assessment program (NIDCAP). *J Pediatr Nurs* 2010; **25**: 89-97 [PMID: [20185059](#) DOI: [10.1016/j.pedn.2009.11.004](#)]
- 18 **Grote NK**, Bridge JA, Gavin AR, Melville JL, Iyengar S, Katon WJ. A meta-analysis of depression during pregnancy and the risk of preterm birth, low birth weight, and intrauterine growth restriction. *Arch Gen Psychiatry* 2010; **67**: 1012-1024 [PMID: [20921117](#) DOI: [10.1001/archgenpsychiatry.2010.111](#)]
- 19 **Sanchez SE**, Puente GC, Atencio G, Qiu C, Yanez D, Gelaye B, Williams MA. Risk of spontaneous preterm birth in relation to maternal depressive, anxiety, and stress symptoms. *J Reprod Med* 2013; **58**: 25-33 [PMID: [23447915](#)]
- 20 **Staneva A**, Bogossian F, Pritchard M, Wittkowski A. The effects of maternal depression, anxiety, and perceived stress during pregnancy on preterm birth: A systematic review. *Women Birth* 2015; **28**: 179-193 [PMID: [25765470](#) DOI: [10.1016/j.wombi.2015.02.003](#)]
- 21 **Grigoriadis S**, Graves L, Peer M, Mamisashvili L, Tomlinson G, Vigod SN, Dennis CL, Steiner M, Brown C, Cheung A, Dawson H, Rector NA, Guenette M, Richter M. Maternal Anxiety During Pregnancy and the Association With Adverse Perinatal Outcomes: Systematic Review and Meta-Analysis. *J Clin Psychiatry* 2018; **79** [PMID: [30192449](#) DOI: [10.4088/JCP.17r12011](#)]
- 22 **Fekadu Dadi A**, Miller ER, Mwanri L. Antenatal depression and its association with adverse birth outcomes in low and middle-income countries: A systematic review and meta-analysis. *PLoS One* 2020; **15**: e0227323 [PMID: [31923245](#) DOI: [10.1371/journal.pone.0227323](#)]
- 23 **Ghimire U**, Papabathini SS, Kawuki J, Obore N, Musa TH. Depression during pregnancy and the risk of low birth weight, preterm birth and intrauterine growth restriction- an updated meta-analysis. *Early Hum Dev* 2021; **152**: 105243 [PMID: [33190020](#) DOI: [10.1016/j.earlhumdev.2020.105243](#)]
- 24 **Gulamani SS**, Premji SS, Kanji Z, Azam SI. Preterm birth a risk factor for postpartum depression in Pakistani women. *Open J Depress* 2013; **2**: 72-81 [DOI: [10.4236/ojd.2013.24013](#)]
- 25 **Hedges LV**. Distribution Theory for Glass's Estimator of Effect Size and Related Estimators. *J Educ Stat* 1981; **6**: 107-128 [DOI: [10.2307/1164588](#)]
- 26 **Hedges LV**. Estimation of effect size from a series of independent experiments. *Psychol Bull* 1982; **92**: 490-499 [DOI: [10.1037/0033-2909.92.2.490](#)]
- 27 **Hedges LV**, Olkin I. Statistical methods for meta-analysis. San Diego, CA: Academic Press, 1985
- 28 **Gray PH**, Edwards DM, O'Callaghan MJ, Cuskelly M. Parenting stress in mothers of preterm infants during early infancy. *Early Hum Dev* 2012; **88**: 45-49 [PMID: [21782361](#) DOI: [10.1016/j.earlhumdev.2011.06.014](#)]
- 29 **Gray PH**, Edwards DM, O'Callaghan MJ, Cuskelly M, Gibbons K. Parenting stress in mothers of very preterm infants -- influence of development, temperament and maternal depression. *Early Hum Dev* 2013; **89**: 625-629 [PMID: [23669559](#) DOI: [10.1016/j.earlhumdev.2013.04.005](#)]
- 30 **Guéron-Sela N**, Atzaba-Poria N, Meiri G, Marks K. Prematurity, ethnicity and personality: risk for postpartum emotional distress among Bedouin-Arab and Jewish women. *J Reprod Infant Psychol* 2013; **31**: 81-93 [DOI: [10.1080/02646838.2012.747195](#)]
- 31 **Madu SN**, Roos JJ. Depression among mothers with preterm infants and their stress-coping strategies. *Soc Behav Personality: Int J* 2006; **34**: 877-890 [DOI: [10.2224/sbp.2006.34.7.877](#)]
- 32 **Pace CC**, Spittle AJ, Molesworth CM, Lee KJ, Northam EA, Cheong JL, Davis PG, Doyle LW, Treyvaud K, Anderson PJ. Evolution of Depression and Anxiety Symptoms in Parents of Very Preterm Infants During the Newborn Period. *JAMA Pediatr* 2016; **170**: 863-870 [PMID: [27428766](#) DOI: [10.1001/jamapediatrics.2016.0810](#)]
- 33 **Gambina I**, Soldera G, Benevento B, Trivellato P, Visentin S, Cavallin F, Trevisanuto D, Zanardo V. Postpartum psychosocial distress and late preterm delivery. *J Reprod Infant Psychol* 2011; **29**: 472-479 [DOI: [10.1080/02646838.2011.653962](#)]
- 34 **Bouras G**, Theofanopoulou N, Mexi-Bourna P, Poullos A, Michopoulos I, Tassiopoulou I, Daskalaki A, Christodoulou C. Preterm birth and maternal psychological health. *J Health Psychol* 2015; **20**: 1388-1396 [PMID: [24323334](#) DOI: [10.1177/1359105313512353](#)]
- 35 **Gungor I**, Oskay U, Beji NK. Biopsychosocial risk factors for preterm birth and postpartum emotional well-being: a case-control study on Turkish women without chronic illnesses. *J Clin Nurs* 2011; **20**: 653-665 [PMID: [21320194](#) DOI: [10.1111/j.1365-2702.2010.03532.x](#)]
- 36 **Suttora C**, Spinelli M, Monzani D. From prematurity to parenting stress: The mediating role of perinatal post-traumatic stress disorder. *Eur J Dev Psychol* 2014; **11**: 478-493 [DOI: [10.1080/17405629.2013.859574](#)]
- 37 **Ballantyne M**, Benzies KM, Trute B. Depressive symptoms among immigrant and Canadian born mothers of preterm infants at neonatal intensive care discharge: a cross sectional study. *BMC Pregnancy Childbirth* 2013; **13** Suppl 1: S11 [PMID: [23445606](#) DOI: [10.1186/1471-2393-13-S1-S11](#)]
- 38 **Barroso NE**, Hartley CM, Bagner DM, Pettit JW. The effect of preterm birth on infant negative affect and maternal postpartum depressive symptoms: A preliminary examination in an underrepresented minority sample. *Infant Behav Dev* 2015; **39**: 159-165 [PMID: [25879520](#) DOI: [10.1016/j.infbeh.2015.02.011](#)]
- 39 **Brandon DH**, Tully KP, Silva SG, Malcolm WF, Murtha AP, Turner BS, Holditch-Davis D. Emotional responses of mothers of late-preterm and term infants. *J Obstet Gynecol Neonatal Nurs* 2011; **40**: 719-731 [PMID: [22092914](#) DOI: [10.1111/j.1552-6909.2011.01290.x](#)]
- 40 **Fabiyi C**, Rankin K, Norr K, Shapiro N, White-Traut R. Anxiety among Black and Latina Mothers of Premature Infants at Social-Environmental Risk. *Newborn Infant Nurs Rev* 2012; **12**: 132-140 [PMID: [22962543](#) DOI: [10.1016/j.ninr.2012.03.003](#)]

- 10.1053/j.nainr.2012.06.004]
- 41 **Logsdon MC**, Davis DW, Birkimer JC, Wilkerson SA. Predictors of Depression in Mothers of Preterm Infants. *J Soc Behav Personality* 1997; **12**: 73-88
- 42 **Rogers CE**, Kidokoro H, Wallendorf M, Inder TE. Identifying mothers of very preterm infants at-risk for postpartum depression and anxiety before discharge. *J Perinatol* 2013; **33**: 171-176 [PMID: 22678144 DOI: 10.1038/jp.2012.75]
- 43 **Shaw RJ**, Sweester CJ, St John N, Lilo E, Corcoran JB, Jo B, Howell SH, Benitz WE, Feinstein N, Melnyk B, Horwitz SM. Prevention of postpartum traumatic stress in mothers with preterm infants: manual development and evaluation. *Issues Ment Health Nurs* 2013; **34**: 578-586 [PMID: 23909669 DOI: 10.3109/01612840.2013.789943]
- 44 **Holditch-Davis D**, Santos H, Levy J, White-Traut R, O'Shea TM, Geraldo V, David R. Patterns of psychological distress in mothers of preterm infants. *Infant Behav Dev* 2015; **41**: 154-163 [PMID: 26495909 DOI: 10.1016/j.infbeh.2015.10.004]
- 45 **Miles MS**, Holditch-Davis D, Schwartz TA, Scher M. Depressive symptoms in mothers of prematurely born infants. *J Dev Behav Pediatr* 2007; **28**: 36-44 [PMID: 17353730 DOI: 10.1097/01.DBP.0000257517.52459.7a]
- 46 **Mew AM**, Holditch-Davis D, Belyea M, Miles MS, Fishel A. Correlates of depressive symptoms in mothers of preterm infants. *Neonatal Netw* 2003; **22**: 51-60 [PMID: 14598980 DOI: 10.1891/0730-0832.22.5.51]
- 47 **Younger JB**, Kendell MJ, Pickler RH. Mastery of stress in mothers of preterm infants. *J Soc Pediatr Nurs* 1997; **2**: 29-35 [PMID: 9051637 DOI: 10.1111/j.1744-6155.1997.tb00197.x]
- 48 **Baptista J**, Moutinho V, Mateus V, Guimarães H, Clemente F, Almeida S, Andrade MA, Dias CP, Freitas A, Martins C, Soares I. Being a mother of preterm multiples in the context of socioeconomic disadvantage: perceived stress and psychological symptoms. *J Pediatr (Rio J)* 2018; **94**: 491-497 [PMID: 29121494 DOI: 10.1016/j.jpeds.2017.08.010]
- 49 **Carson C**, Redshaw M, Gray R, Quigley MA. Risk of psychological distress in parents of preterm children in the first year: evidence from the UK Millennium Cohort Study. *BMJ Open* 2015; **5**: e007942 [PMID: 26685019 DOI: 10.1136/bmjopen-2015-007942]
- 50 **Drewett R**, Blair P, Emmett P, Emond A; ALSPAC Study Team. Failure to thrive in the term and preterm infants of mothers depressed in the postnatal period: a population-based birth cohort study. *J Child Psychol Psychiatry* 2004; **45**: 359-366 [PMID: 14982248 DOI: 10.1111/j.1469-7610.2004.00226.x]
- 51 **Henderson J**, Carson C, Redshaw M. Impact of preterm birth on maternal well-being and women's perceptions of their baby: a population-based survey. *BMJ Open* 2016; **6**: e012676 [PMID: 27855105 DOI: 10.1136/bmjopen-2016-012676]
- 52 **Ionio C**, Colombo C, Brazzoduro V, Mascheroni E, Confalonieri E, Castoldi F, Lista G. Mothers and Fathers in NICU: The Impact of Preterm Birth on Parental Distress. *Eur J Psychol* 2016; **12**: 604-621 [PMID: 27872669 DOI: 10.5964/ejop.v12i4.1093]
- 53 **Misund AR**, Nerdum P, Bråten S, Pripp AH, Diseth TH. Long-term risk of mental health problems in women experiencing preterm birth: a longitudinal study of 29 mothers. *Ann Gen Psychiatry* 2013; **12**: 33 [PMID: 24176131 DOI: 10.1186/1744-859X-12-33]
- 54 **Trumello C**, Candelori C, Cofini M, Cimino S, Cerniglia L, Paciello M, Babore A. Mothers' Depression, Anxiety, and Mental Representations After Preterm Birth: A Study During the Infant's Hospitalization in a Neonatal Intensive Care Unit. *Front Public Health* 2018; **6**: 359 [PMID: 30581812 DOI: 10.3389/fpubh.2018.00359]
- 55 **Mautner E**, Greimel E, Trutnovsky G, Daghofer F, Egger JW, Lang U. Quality of life outcomes in pregnancy and postpartum complicated by hypertensive disorders, gestational diabetes, and preterm birth. *J Psychosom Obstet Gynaecol* 2009; **30**: 231-237 [PMID: 19845493 DOI: 10.3109/01674820903254757]
- 56 **Korja R**, Savonlahti E, Ahlqvist-Björkroth S, Stolt S, Haataja L, Lapinleimu H, Piha J, Lehtonen L; PIPARI study group. Maternal depression is associated with mother-infant interaction in preterm infants. *Acta Paediatr* 2008; **97**: 724-730 [PMID: 18373715 DOI: 10.1111/j.1651-2227.2008.00733.x]
- 57 **Davis L**, Edwards H, Mohay H, Wollin J. The impact of very premature birth on the psychological health of mothers. *Early Hum Dev* 2003; **73**: 61-70 [PMID: 12932894 DOI: 10.1016/s0378-3782(03)00073-2]
- 58 **Edwards DM**, Gibbons K, Gray PH. Relationship quality for mothers of very preterm infants. *Early Hum Dev* 2016; **92**: 13-18 [PMID: 26619068 DOI: 10.1016/j.earlhumdev.2015.10.016]
- 59 **Hagan R**, Evans SF, Pope S. Preventing postnatal depression in mothers of very preterm infants: a randomised controlled trial. *BJOG* 2004; **111**: 641-647 [PMID: 15198752 DOI: 10.1111/j.1471-0528.2004.00165.x]
- 60 **Bener A**. Psychological distress among postpartum mothers of preterm infants and associated factors: a neglected public health problem. *Braz J Psychiatry* 2013; **35**: 231-236 [PMID: 24142082 DOI: 10.1590/1516-4446-2012-0821]
- 61 **Sharan H**, Kaplan B, Weizer N, Sulkes J, Merlob P. Early screening of postpartum depression using the Edinburgh Postnatal Depression Scale. *Int J Risk Saf Med* 2006; **18**: 213-218
- 62 **Howe TH**, Sheu CF, Wang TN, Hsu YW. Parenting stress in families with very low birth weight preterm infants in early infancy. *Res Dev Disabil* 2014; **35**: 1748-1756 [PMID: 24656293 DOI: 10.1016/j.ridd.2014.02.015]
- 63 **Anderson FM**, Hatch SL, Comacchio C, Howard LM. Prevalence and risk of mental disorders in the perinatal period among migrant women: a systematic review and meta-analysis. *Arch Womens Ment Health* 2017; **20**: 449-462 [PMID: 28389934 DOI: 10.1007/s00737-017-0723-z]
- 64 **Gulamani SS**, Premji SS, Kanji Z, Azam SI. A review of postpartum depression, preterm birth, and culture. *J Perinat Neonatal Nurs* 2013; **27**: 52-9; quiz 60 [PMID: 23360942 DOI: 10.1097/JPN.0b013e31827f2f24]
- 65 **NHS Digital**. Health Survey for England – 2012. [cited 8 April 2021]. In: NHS Digital [Internet]. Available from: <https://digital.nhs.uk/data-and-information/publications/statistical/health-survey-for-england/health-survey-for-england-2012>
- 66 **von Hinke Kessler Scholder S**, Wehby GL, Lewis S, Zuccolo L. Alcohol Exposure *In Utero* and Child Academic Achievement. *Econ J (London)* 2014; **124**: 634-667 [PMID: 25431500 DOI: 10.1111/eoj.12144]
- 67 **The Royal College of Midwives**. Alcohol and pregnancy guidance paper. [cited 8 April 2021]. In: The Royal College of Midwives [Internet]. Available from: <https://europepmc.org/article/HIR/378336>
- 68 **Schölin L**, Watson J, Dyson J, Smith L. Alcohol Guidelines For Pregnant Women: Barriers and enablers for Midwives to deliver advice. [cited 8 April 2021]. In: The Institute of Alcohol Studies [Internet]. Available from:

- <https://www.ias.org.uk/uploads/pdf/IAS%20reports/rp37092019.pdf>
- 69 **U S. Department of Health and Human Services.** Results from the 2011 National Survey on Drug Use and Health: Summary of National Findings. Substance Abuse and Mental Health Services Administration Center for Behavioral Health Statistics and Quality. [cited 8 April 2021]. In: U.S. Department of Health and Human Services [Internet]. Available from: <https://www.samhsa.gov/data/sites/default/files/Revised2k11NSDUHSummNatFindings/Revised2k11NSDUHSummNatFindings/NSDUHresults2011.htm>
- 70 **Stone R.** Pregnant women and substance use: fear, stigma, and barriers to care. *Health Justice* 2015; **3** [DOI: [10.1186/s40352-015-0015-5](https://doi.org/10.1186/s40352-015-0015-5)]
- 71 **National Institute for Health and Clinical Excellence.** National Collaborating Centre for Women's and Children's Health. Descriptions of services for pregnant women with complex social factors. [cited 8 April 2021]. In: National Institute for Health and Clinical Excellence [Internet]. Available from: <https://www.nice.org.uk/guidance/cg110/resources/service-descriptions-pdf-136153837>
- 72 **Holden KB,** McKenzie R, Pruitt V, Aaron K, Hall S. Depressive symptoms, substance abuse, and intimate partner violence among pregnant women of diverse ethnicities. *J Health Care Poor Underserved* 2012; **23**: 226-241 [PMID: [22643473](https://pubmed.ncbi.nlm.nih.gov/22643473/) DOI: [10.1353/hpu.2012.0022](https://doi.org/10.1353/hpu.2012.0022)]
- 73 **Wells GA,** Shea B, O'Connell D, Peterson J, Welch V, Losos M, Tugwell P. The Newcastle-Ottawa Scale (NOS) for assessing the quality of nonrandomised studies in meta-analyses. Ottawa Hospital Research Institute, Ottawa, ON, Canada, 2000
- 74 **Modesti PA,** Reboldi G, Cappuccio FP, Agyemang C, Remuzzi G, Rapi S, Perruolo E, Parati G; ESH Working Group on CV Risk in Low Resource Settings. Panethnic Differences in Blood Pressure in Europe: A Systematic Review and Meta-Analysis. *PLoS One* 2016; **11**: e0147601 [PMID: [26808317](https://pubmed.ncbi.nlm.nih.gov/26808317/) DOI: [10.1371/journal.pone.0147601](https://doi.org/10.1371/journal.pone.0147601)]



Published by **Baishideng Publishing Group Inc**
7041 Koll Center Parkway, Suite 160, Pleasanton, CA 94566, USA

Telephone: +1-925-3991568

E-mail: bpgoffice@wjgnet.com

Help Desk: <https://www.f6publishing.com/helpdesk>

<https://www.wjgnet.com>

