

World Journal of *Virology*

World J Virol 2022 September 25; 11(5): 221-393



REVIEW

- 221 Mucosal COVID-19 vaccines: Risks, benefits and control of the pandemic
Miteva D, Peshevska-Sekulovska M, Snegarova V, Batselova H, Alexandrova R, Velikova T
- 237 Association of COVID-19 with hepatic metabolic dysfunction
Kumar R, Kumar V, Arya R, Anand U, Priyadarshi RN
- 252 SARS-CoV-2 infection and diabetes: Pathophysiological mechanism of multi-system organ failure
Roy B, Runa SA

MINIREVIEWS

- 275 Hepatitis B virus infection reactivation in patients under immunosuppressive therapies: Pathogenesis, screening, prevention and treatment
Spera AM
- 283 Acute kidney injury and electrolyte disorders in COVID-19
Nogueira GM, Silva NLOR, Moura AF, Duarte Silveira MA, Moura-Neto JA
- 293 Rhino-orbital-cerebral mucormycosis as a complication of coronavirus disease 2019
Al-Ani RM
- 300 Role of high dose vitamin C in management of hospitalised COVID-19 patients: A minireview
Juneja D, Gupta A, Kataria S, Singh O
- 310 COVID-19 and hemolysis, elevated liver enzymes and thrombocytopenia syndrome - association or causation?
Nasa P, Juneja D, Jain R, Nasa R

ORIGINAL ARTICLE

Retrospective Study

- 321 Manifestations of COVID-19 infection in children with malignancy: A single-center experience in Jordan
Qatawneh MA, Altarawneh M, Alhazameh R, Jazazi M, Jarrah O, Shorman A, Alsadah L, Mustafa M
- 331 Effect of age on computed tomography findings: Specificity and sensitivity in coronavirus disease 2019 infection
Karavas E, Unver E, Aydın S, Yalcin GS, Fatihoglu E, Kuyruklyildiz U, Arslan YK, Yazici M

Observational Study

- 341 Validity of the patient health questionnaires (phq-2 and phq-9) for screening depression among human immunodeficiency virus patients in Lahore, Pakistan
Junaid K, Akram I, Daood M, Khan A

SYSTEMATIC REVIEWS

- 352** Mortality rate of COVID-19 infection in end stage kidney disease patients on maintenance hemodialysis: A systematic review and meta-analysis
Cancarevic I, Nassar M, Daoud A, Ali H, Nso N, Sanchez A, Parikh A, Ul Hosna A, Devanabanda B, Ahmed N, Soliman KM
- 362** Anatomophysiological relationships and clinical considerations of taste and smell loss in patients with COVID-19
Vigliar MFR, Pomini KT, Buchaim DV, Buchaim RL
- 375** Utility of cardiac bioenzymes in predicting cardiovascular outcomes in SARS-CoV-2
Muthyala A, Sasidharan S, John KJ, Lal A, Mishra AK

LETTER TO THE EDITOR

- 391** Possible agent for COVID-19 treatment: Rifampicin
Aydin OC, Aydin S, Barun S

ABOUT COVER

Editor-in-Chief of *World Journal of Virology*, Farzad Gheshlaghi, MD, Attending Doctor, Consultant Physician-Scientist, Dean, Professor, Department of Clinical Toxicology, Isfahan University of Medical Sciences, Isfahan 8168615563, Iran. gheshlaghi@med.mui.ac.ir

AIMS AND SCOPE

The primary aim of *World Journal of Virology* (WJV, *World J Virol*) is to provide scholars and readers from various fields of virology with a platform to publish high-quality basic and clinical research articles and communicate their research findings online.

WJV mainly publishes articles reporting research results obtained in the field of virology and covering a wide range of topics including arbovirus infections, viral bronchiolitis, central nervous system viral diseases, coinfection, DNA virus infections, viral encephalitis, viral eye infections, chronic fatigue syndrome, animal viral hepatitis, human viral hepatitis, viral meningitis, opportunistic infections, viral pneumonia, RNA virus infections, sexually transmitted diseases, viral skin diseases, slow virus diseases, tumor virus infections, viremia, and zoonoses.

INDEXING/ABSTRACTING

The WJV is now abstracted and indexed in PubMed, PubMed Central, Reference Citation Analysis, China National Knowledge Infrastructure, China Science and Technology Journal Database, and Superstar Journals Database.

RESPONSIBLE EDITORS FOR THIS ISSUE

Production Editor: *Yun-Xi Chen*; Production Department Director: *Xiang Li*; Editorial Office Director: *Jin-Lai Wang*.

NAME OF JOURNAL

World Journal of Virology

ISSN

ISSN 2220-3249 (online)

LAUNCH DATE

February 12, 2012

FREQUENCY

Bimonthly

EDITORS-IN-CHIEF

Mahmoud El-Bendary, En-Qiang Chen

EDITORIAL BOARD MEMBERS

<https://www.wjgnet.com/2220-3249/editorialboard.htm>

PUBLICATION DATE

September 25, 2022

COPYRIGHT

© 2022 Baishideng Publishing Group Inc

INSTRUCTIONS TO AUTHORS

<https://www.wjgnet.com/bpg/gerinfo/204>

GUIDELINES FOR ETHICS DOCUMENTS

<https://www.wjgnet.com/bpg/gerinfo/287>

GUIDELINES FOR NON-NATIVE SPEAKERS OF ENGLISH

<https://www.wjgnet.com/bpg/gerinfo/240>

PUBLICATION ETHICS

<https://www.wjgnet.com/bpg/gerinfo/288>

PUBLICATION MISCONDUCT

<https://www.wjgnet.com/bpg/gerinfo/208>

ARTICLE PROCESSING CHARGE

<https://www.wjgnet.com/bpg/gerinfo/242>

STEPS FOR SUBMITTING MANUSCRIPTS

<https://www.wjgnet.com/bpg/gerinfo/239>

ONLINE SUBMISSION

<https://www.f6publishing.com>



Retrospective Study

Effect of age on computed tomography findings: Specificity and sensitivity in coronavirus disease 2019 infection

Erdal Karavas, Edhem Unver, Sonay Aydın, Gonul Seven Yalcin, Erdem Fatihoglu, Ufuk Kuyrukluıldiz, Yusuf Kemal Arslan, Mustafa Yazici

Specialty type: Radiology, nuclear medicine and medical imaging

Provenance and peer review: Invited article; Externally peer reviewed.

Peer-review model: Single blind

Peer-review report's scientific quality classification

Grade A (Excellent): 0
Grade B (Very good): 0
Grade C (Good): C, C
Grade D (Fair): 0
Grade E (Poor): 0

P-Reviewer: Bellini MI, Italy; Wang MK, China

Received: April 24, 2022

Peer-review started: April 24, 2022

First decision: May 12, 2022

Revised: June 1, 2022

Accepted: August 25, 2022

Article in press: August 25, 2022

Published online: September 25, 2022



Erdal Karavas, Sonay Aydın, Erdem Fatihoglu, Department of Radiology, Erzincan Binali Yildirim University, Erzincan 24100, Turkey

Edhem Unver, Gonul Seven Yalcin, Department of Pulmonology, Erzincan Binali Yildirim University, Erzincan 24100, Turkey

Ufuk Kuyrukluıldiz, Department of Anesthesiology and Reanimation, Erzincan Binali Yildirim University, Erzincan 24100, Turkey

Yusuf Kemal Arslan, Department of Biostatistics, Erzincan Binali Yildirim University, Erzincan 24100, Turkey

Mustafa Yazici, Department of Dermatology, Erzincan Binali Yildirim University, Erzincan 24100, Turkey

Corresponding author: Sonay Aydın, MD, Associate Professor, Department of Radiology, Erzincan Binali Yildirim University, Erzincan Binali Yildirim Üniversitesi Tıp Fakültesi Dekanlığı Başbağlar Mahallesi 1429, Sokak No:2/1 24100 ERZİNCAN, Erzincan 24100, Turkey. sonay.aydin@erzincan.edu.tr

Abstract

BACKGROUND

Coronavirus disease 2019 (COVID-19) is a pandemic caused by the severe acute respiratory syndrome coronavirus in 2019. Although the real-time reverse transcription PCR test for viral nucleic acids is the gold standard for COVID-19 diagnosis, computed tomography (CT) has grown in importance.

AIM

To evaluate the sensitivity and specificity of thoracic CT findings of COVID-19 pneumonia according to age groups.

METHODS

PCR and CT results from 411 patients were reviewed. The diagnosis of COVID-19 pneumonia was made by three radiologists. Lymphadenopathy, pericardial effusion, pleurisy, pleural thickening, pleural effusion, location features of the lesions, ground glass, consolidation, air bronchogram, vascular enlargement, bronchial dilatation, halo finding, inverted halo sign, nodularity, air bubble,

subpleural band (curvilinear density), reticular density, crazy paving pattern, and fibrosis findings were recorded. The patients were divided into nine groups by decades while calculating the sensitivity, specificity, and diagnostic efficacy for CT positivity.

RESULTS

The mean age of the cases was 48.1 ± 22.7 years. The CT finding with the highest diagnostic power was ground glass. Vascular enlargement and bronchial dilatation followed ground glass. Pericardial effusion was the finding with the lowest diagnostic accuracy. The incidence of lymphadenopathy, pleurisy, pleural thickening, peripheral localization, bilateral, ground glass, vascular enlargement, bronchial dilatation, subpleural band, reticular density, crazy paving appearance, and fibrosis all increased significantly with age in patients with positive real-time reverse transcription PCR test.

CONCLUSION

There are few publications comparing sensitivity and specificity of thoracic CT findings according to age. In cases of COVID-19 pneumonia, there is an increase in the variety and frequency of CT findings with age, and parallel to this the sensitivity and specificity of the findings increase. COVID-19 cases in the pediatric age group have fewer lung findings than adults, and this situation decreases the diagnostic value of CT in pediatric patients.

Key Words: Thoracic computerized tomography; SARS-CoV-2; COVID-19; Diagnosis; Pediatric age

©The Author(s) 2022. Published by Baishideng Publishing Group Inc. All rights reserved.

Core Tip: Despite its high sensitivity for identifying coronavirus disease 2019 (COVID-19) pneumonia, the diagnostic potential of computed tomography findings has not been thoroughly investigated, particularly in relation to age subgroups. It is worth noting that the prevalence of COVID-19 pneumonia can vary by age. Even common results, such as ground glass opacities, can be reduced in younger individuals, particularly in the pediatric population. Additionally, the findings of this study may raise awareness about the proper use of computed tomography scans in children and contribute to radiation protection by limiting computed tomography scans in age groups with low sensitivity.

Citation: Karavas E, Unver E, Aydın S, Yalcin GS, Fatihoglu E, Kuyrukluıldiz U, Arslan YK, Yazici M. Effect of age on computed tomography findings: Specificity and sensitivity in coronavirus disease 2019 infection. *World J Virol* 2022; 11(5): 331-340

URL: <https://www.wjgnet.com/2220-3249/full/v11/i5/331.htm>

DOI: <https://dx.doi.org/10.5501/wjv.v11.i5.331>

INTRODUCTION

The World Health Organization has declared coronavirus disease 2019 (COVID-19) a pandemic caused by severe acute respiratory syndrome coronavirus 2[1,2]. Although fever and cough are the most common clinical symptoms, other symptoms such as fatigue, shortness of breath, and headache may also be present[3]. However, because all of these symptoms are not unique to the disease and because the disease can progress quickly to severe pneumonia, diagnostic tests are required.

Although the real-time reverse transcription (RT)-PCR test for viral nucleic acids is the gold standard in the diagnosis of COVID-19, computed tomography (CT) has become increasingly important in the diagnosis due to false negative results and the inability to obtain results quickly[4]. Because CT has a sensitivity of 97 %, it is frequently used, and algorithms are developed accordingly[5]. Even if the RT-PCR is negative, treatment and isolation are initiated in close contacts[6]. However, because CT contains ionizing radiation, there is a risk of unintentional use. The expected harms of ionizing radiation are greater in children than in adults. Seeing that, we aim to define the change of the CT findings as well as the sensitivity and the specificity of these findings according to age.

MATERIALS AND METHODS

Study design

The local (33216249-50.01.02-E.25467) medical ethics committee approved this study. The ethics committee waived informed consent as a result of the retrospective nature.

The study included 411 patients with suspected COVID-19 who applied to a tertiary healthcare center. The registration period began on March 15, 2020 and ended on May 15, 2020. All patients had laboratory RT-PCR testing of respiratory secretions obtained *via* nasopharyngeal or oropharyngeal swab. Clinical data from electronic medical records were reviewed.

All patients had a CT scan without intravenous contrast material on the day they were admitted to the hospital (Siemens SOMATOM Sensation 16, Forchheim, Germany). All patients were scanned in the supine position using an adult CT protocol; reconstruction images of the 1.5 mm lung window were obtained using tube voltage = 130kV, effective mAs = 70, slice thickness = 5 mm, collimation = 16 × 1.2, pitch = 0.8. In children, reconstruction images of the lung window of 1.5 mm were obtained with protocol tube voltage = 110kV, effective mAs = 60, slice thickness = 8 mm, collimation = 16 × 1.2, pitch = 0.8 (14 years and younger).

All CT images were reviewed by three thorax imaging experts who were not aware of the RT-PCR test results, and the final decision was reached by consensus. The North American Society of Radiology Expert Consensus Statement on Reporting of Lung CT Findings Related to COVID-19[7] (Radiological Society of North America Expert Consensus Statement on Reporting Chest CT Findings Related to COVID-19) was followed in the evaluation for pneumonia caused by COVID-19. Typical and indeterminate appearance were considered positive for COVID-19 infection, whereas atypical appearance and negative for pneumonia were considered negative for infection. Lymphadenopathy, pericardial effusion, pleurisy, pleural thickening, pleural effusion, lesion location features (peripheral-central-diffuse, posterior, bilateral-unilateral, *etc*), ground glass, consolidation, air bronchogram, vascular enlargement, bronchial dilatation, halo sign, reverse halo sign, nodularity, air bubble, subpleural band (curvilinear density), reticular density, crazy paving pattern, and fibrosis findings were recorded.

The patients were divided into nine groups by decades when calculating the sensitivity, specificity, and significance for CT positivity. The ninth group was defined as people aged 80 and up. To avoid decreasing statistical power, the sensitivity, specificity, and significance of the CT findings were divided into three groups determined by the World Health Organization (age group 1: 0-18, age group 2: 18-60, age group 3: 60 and above).

Statistical analysis

IBM SPSS 22 was used for statistical analyses (IBM Corp. Released 2013. IBM SPSS Statistics for Windows, Version 22.0. Armonk, NY, United States: IBM Corp.). The Kolmogorov-Smirnov test was used to determine whether the data conformed to a normal distribution. Numerical variables with a normal distribution were represented as mean and standard deviation values, variables without a normal distribution as median (minimum-maximum) values, and categorical variables as number (*n*) and percentage values (percent). When calculating CT diagnostic accuracy measures, RT-PCR was used as the gold standard. CT sensitivity and specificity were reported along with their 95% confidence intervals. Exact Clopper-Pearson confidence intervals for sensitivity and specificity were calculated. A *P* value of less than 0.05 was considered as statistically significant.

RESULTS

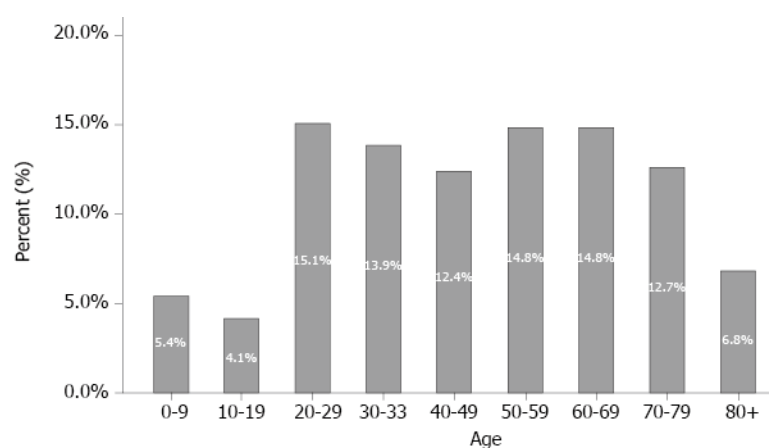
The average age of the 411 cases was 48.1 ± 22.7 years (median: 49, range: 0-99), with 241 (58.8%) males and 170 (41.4%) females. **Figure 1** depicts the distribution of the number of patients by decade, while **Figure 2** depicts the distribution by group. There were 181 positive RT-PCR results and 230 negative RT-PCR results out of 411 patients, for a positive rate of 41% (181/411). There was no statistically significant difference in age or gender between patients with positive and negative RT-PCR results (*P* > 0.05). There were 141 positive and 40 negative CT findings in 181 cases, for a positive rate of 77.9% (141/181). The overall and age-segregated sensitivity and specificity of CT were calculated and reported based on RT-PCR results. CT sensitivity was found to be 77.9% (95% confidence interval: 71.15 to 83.72) for all patients. However, when the sensitivity value was stratified based on age, it was discovered that it had changed. The findings revealed that the sensitivity of CT increased with age (**Table 1**, **Figures 3 and 4**).

Table 2 showed the diagnostic accuracy of the findings recorded in RT-PCR test negative and positive cases across the entire population. According to these findings, ground glass opacity had the highest diagnostic accuracy of 62.5% (sensitivity 84.4%, specificity 33.7%), followed by vascular enlargement at 58.5% and bronchial dilatation at 58.3% (**Figure 5A**). With a diagnostic accuracy of 40.0%, pericardial effusion is the finding with the lowest diagnostic accuracy.

Table 1 Diagnostic accuracy measures of the computerized tomography according to age

Age	CT	RT-PCR		Sensitivity, % (95%CI)	Specificity, % (95%CI)
		COVID-19 negative	COVID-19 positive		
Age categories	0-9	Negative	3	11.11 (0.28-48.25)	23.08 (5.04-53.81)
		Positive	10		
	10-19	Negative	0	50.00 (11.81-88.19)	0.00 (0.00-28.49)
		Positive	11		
	20-29	Negative	10	60.87 (38.54-80.29)	25.64 (13.04-42.13)
		Positive	29		
	30-39	Negative	5	66.67 (47.19-82.71)	18.52 (6.30-38.08)
		Positive	22		
	40-49	Negative	9	91.30 (71.96-98.93)	32.14 (15.88-52.35)
		Positive	19		
	50-59	Negative	4	90.32 (74.25-97.96)	13.33 (3.76-30.72)
		Positive	26		
	60-69	Negative	3	92.59 (75.71-99.09)	8.82 (1.86-23.68)
		Positive	31		
	70-79	Negative	4	81.25 (54.35-95.95)	11.11 (3.11-26.06)
		Positive	32		
	80+	Negative	4	100.00 (79.41-100.0)	33.33 (9.92-65.11)
		Positive	8		
Overall	Negative	42	40	77.90 (71.15-83.72)	18.26 (13.49-23.87)
	Positive	188	141		

Diagnostic accuracy measures (sensitivity and specificity) were calculated for computed tomography when real-time reverse transcription PCR was gold standard. CT: Computed tomography; RT-PCR: Real-time reverse transcription PCR; COVID-19: Coronavirus disease 2019; CI: Confidence interval.



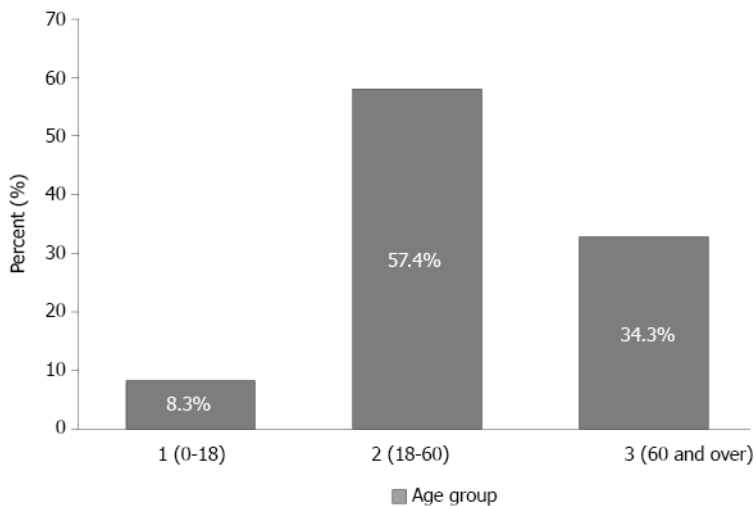
DOI: 10.5501/wjv.v11.i5.331 Copyright ©The Author(s) 2022.

Figure 1 Age distribution.

Table 3 showed the frequency of findings in cases with positive RT-PCR tests based on age groups. Lymphadenopathy, pleurisy, pleural thickening, peripheral localization, bilateral, ground glass, vascular enlargement, bronchial dilatation, subpleural band, reticular density, crazy paving appearance, and fibrosis all increased with age ($P < 0.05$) (Figure 5B). Although there was a significant difference in consolidation, air bronchogram, and air bubble findings between age groups, it was not related to

Table 2 Diagnostic accuracy of findings across the entire population

Findings	Sensitivity, %	Specificity, %	Diagnostic accuracy, %
Lymphadenopathy	60.3	44.7	46.9
Pleurisy	78.3	45.6	48.0
Pericardial effusion	80.0	40.0	40.0
Pleural thickening	19.3	86.1	48.0
Peripheral location	46.5	53.6	49.6
Posterior location	65.1	22.0	48.5
Bilateral location	69.3	22.0	51.4
Ground glass	84.4	33.7	62.5
Consolidation	45.9	71.1	56.7
Air bronchogram	31.2	81.3	52.8
Vascular enlargement	53.2	65.7	58.5
Bronchial dilatation	50.5	68.7	58.3
Halo sign	28.9	75.3	48.9
Reverse halo sign	1.4	95.8	42.1
Nodularity	37.2	68.1	50.5
Air bubble	16.1	87.3	46.8
Subpleural band	27.1	70.5	45.8
Reticular density	11.9	88.6	45.0
Crazy paving appearance	11.0	97.6	48.4
Fibrosis	15.6	90.3	47.7



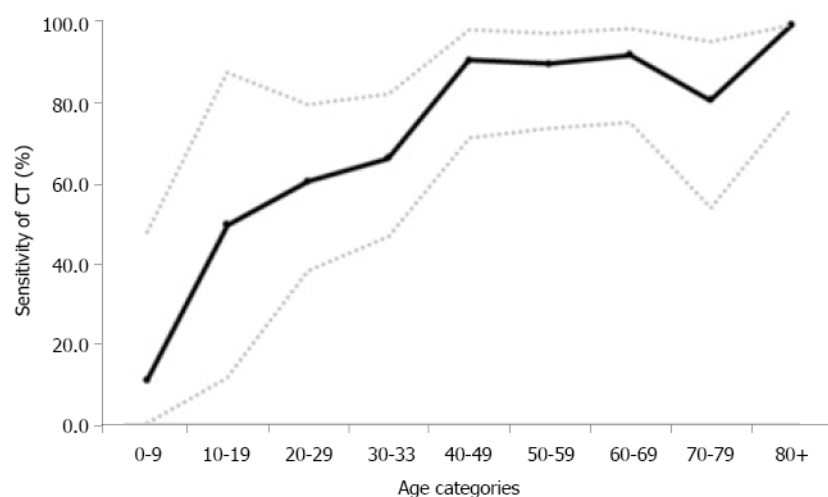
DOI: 10.5501/wjv.v11.i5.331 Copyright ©The Author(s) 2022.

Figure 2 Age group distribution.

patient age (Figure 5C). There was no significant difference in the rates of bilateral involvement, posterior location, pericardial effusion, halo, reverse halo, and nodularity between the three groups ($P > 0.05$) (Figure 5D).

Table 3 Frequency of findings according to age groups

Findings	Age group 1, %	Age group 2, %	Age group 3, %	P value
Lymphadenopathy	0	8.1	29.8	0.001
Pleurisy	0	2.2	20.8	0.002
Pericardial effusion	0	0.5	3.1	0.092
Pleural thickening	3.0	12.7	27.5	0.005
Peripheral location	36.4	61.5	65.1	0.04
Posterior location	59.1	67.1	74.6	0.09
Bilateral location	50.0	62.1	88.5	0.07
Ground glass	51.5	69.1	94.7	0.007
Consolidation	39.4	29.5	52.7	0.02
Air bronchogram	36.4	18.2	35.1	0.001
Vascular enlargement	30.3	38.2	59.5	0.03
Bronchial dilatation	30.3	36.7	53.4	0.005
Halo sign	24.2	26.8	24.2	0.055
Reverse halo sign	0	2.3	3.8	0.06
Nodularity	36.4	34.1	35.9	0.067
Air bubble	0	0	0.8	0.04
Subpleural band	12.1	21.8	42.8	0.002
Reticular density	0	9.1	18.3	0.001
Crazy paving appearance	3.0	4.1	13.0	0.02
Fibrosis	0	2.7	33.8	0.001

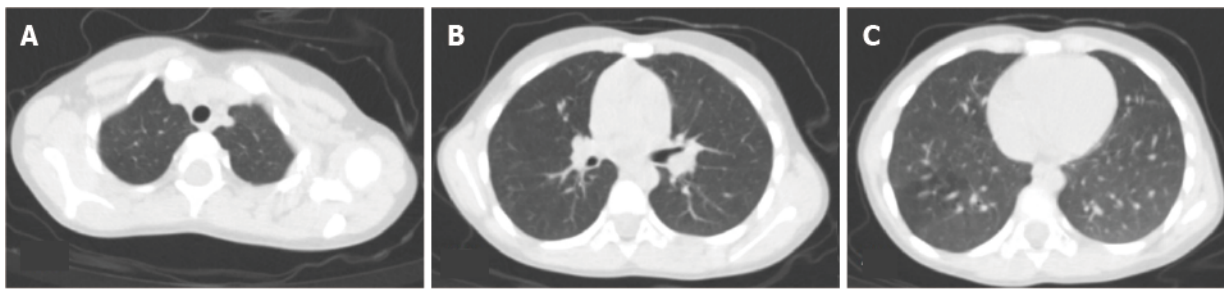


DOI: 10.5501/wjv.v11.i5.331 Copyright ©The Author(s) 2022.

Figure 3 Sensitivity of computed tomography by age groups. Sensitivity values and their 95% confidence intervals were shown on the graph. CT: Computed tomography.

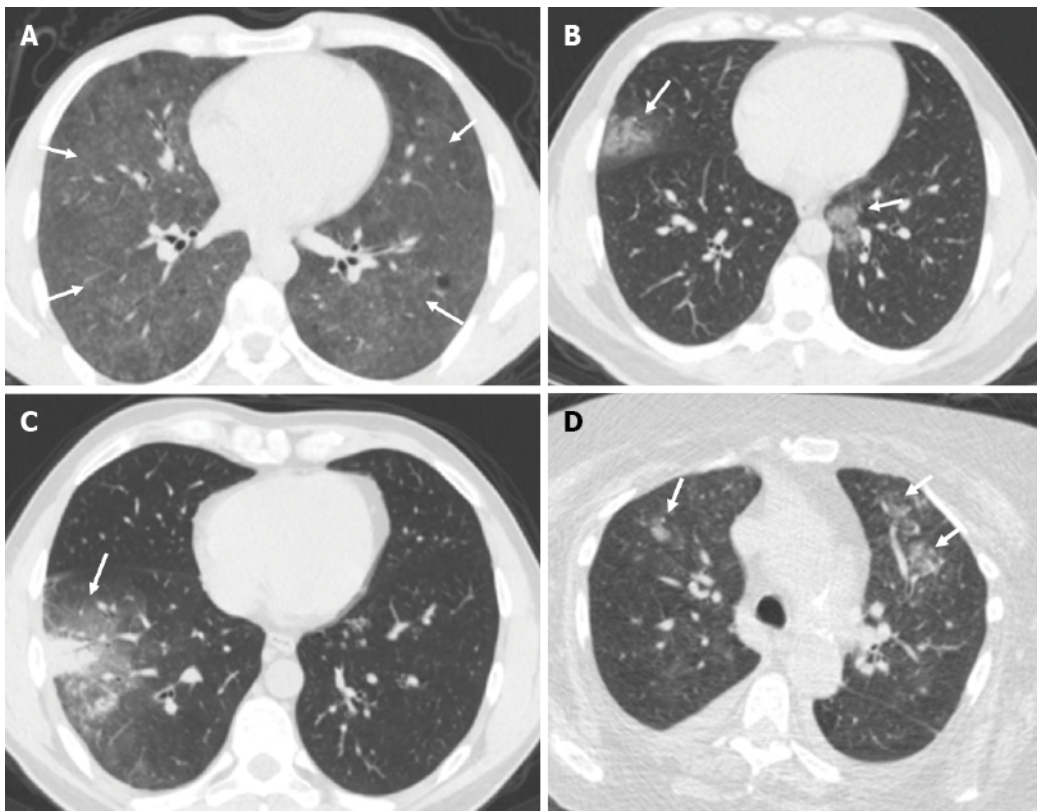
DISCUSSION

On March 11, 2020, the World Health Organization declared COVID-19 a global epidemic. The disease's high contagiousness necessitated the development of a rapid and highly sensitive test. In addition to the low sensitivity of the gold standard RT-PCR test, test results were provided within days or weeks due to a lack of testing centers, particularly in the 1st months of the pandemic. This circumstance has resulted in a more rapid and accessible test requirement. The impact of COVID-19 infection on the lower



DOI: 10.5501/wjv.v11.i5.331 Copyright ©The Author(s) 2022.

Figure 4 A thoracic computed tomography scan in a 5-year-old female patient. There were no pathological findings in the sections that passed through the upper (A), middle (B), and lower (C) zones.



DOI: 10.5501/wjv.v11.i5.331 Copyright ©The Author(s) 2022.

Figure 5 Thoracic computed tomography scans in patients. A: A 45-year-old male patient underwent a thoracic computed tomography (CT) scan. Sections passing through the middle zones showed diffuse ground-glass infiltration areas with preservation of subpleural areas in both lungs (arrows); B: A 44-year-old female patient underwent a thoracic CT scan. In the sections passing through the lower zones, infiltration areas of peripheral ground glass density with a mild halo were observed in the medial basal segment on the right and in the upper lobe inferior lingular segment on the left (arrows); C: A 35-year-old male patient underwent a thoracic CT scan. A subpleural consolidation area with air bronchogram and ground-glass density halo could be seen in the lateral basal segment of the right lung lower lobe in sections passing through the lower zones (arrow); D: A 77-year-old female patient underwent a thoracic CT scan. In the sections passing through the upper zones, centrilobular nodular infiltrating areas in the form of a budding tree pattern were observed in the anterior segments of the upper lobes of bilateral lungs, particularly on the left (arrows).

respiratory tract has brought thoracic CT examination to the forefront. Thoracic CT is useful for detecting viral lung infection, determining the nature and extent of pulmonary lesions, and monitoring disease activity[8-11]. In addition, the latest studies revealed that CT perfusion examinations can reveal perfusion deficits in COVID-19 pneumonia[12]. In these circumstances, in addition to the potential for rapid diagnosis of COVID-19 by thoracic CT, identification of pulmonary changes and base images of the cases to be followed may be an added benefit.

Multiple, peripheral, bilateral, irregular, subsegmental or segmental ground glass opacities, mostly bronchovascular bundles, and areas of consolidation scattered throughout the subpleural space are typical COVID-19 chest CT imaging features. The presence of associated intralobular septal thickening in areas of ground glass opacity, crazy paving appearance, consolidation, and air bronchograms with

areas of bronchial wall thickening and less frequently thickening of the adjacent or interlobar pleura as well as a small amount of pleural effusion are also COVID-19 chest CT imaging features[7,13,14]. When all cases were considered in our study, the findings of ground glass density, vascular enlargement, bronchial dilatation, consolidation, and bilaterality stood out for diagnostic accuracy.

In limited studies, pediatric patients with COVID-19 have relatively mild clinical symptoms, a higher prevalence of negative CT scans, and atypical, peribronchial distribution of lung opacities and bronchial wall thickening are more common[15,16]. The incidence of any finding other than an air bronchogram and nodular appearance is not higher in this age group than in other age groups. Posterior location, bilaterality, and ground glass density are the most common findings. Among these findings is that the prevalence of ground glass density is significantly lower in this age group than in other age groups. The sensitivity of CT diagnosis in the 0-9 age group was found to be quite low in our study.

For the diagnosis of COVID-19, various algorithms have been developed. Due to the large number of cases, doctors from fields other than chest diseases or infectious diseases had to play an active role in disease diagnosis in many hospitals. Due to a lack of experience in physical examination, doctors from various fields frequently rely on thoracic CT examination, with the tendency to deviate from algorithms and make an easy and quick diagnosis. RT-PCR may be negative in the early stages of the disease and due to other variants as well as the inadequacy of the RT-PCR test contributes to the overuse of thoracic CT[17,18]. Routine thoracic CT screening for COVID-19 is not recommended, and confirmatory diagnosis is based on RT-PCR. When a low-dose CT scan is required, it is preferable for the pediatric population. Follow-up imaging is only necessary in cases of clinical deterioration and should be kept to a minimum.

The study's most significant limitation is the small number of cases in the 0-18 age range. The main reason for this is that clinical symptoms in this age group are unclear, and pediatricians in our hospital are actively treating patients with suspected COVID-19.

CONCLUSION

Despite its high sensitivity for identifying COVID-19 pneumonia, the diagnostic potential of CT findings has not been thoroughly investigated, particularly in relation to age subgroups. It is worth noting that the prevalence of COVID-19 pneumonia can vary by age. Even common results, such as ground glass opacities, can be reduced in younger individuals, particularly in the pediatric population. Additionally, the findings of this study may raise awareness about the proper use of CT scans in children and contribute to radiation protection by limiting CT scans in age groups with low sensitivity.

ARTICLE HIGHLIGHTS

Research background

Coronavirus disease 2019 (COVID-19) is a pandemic caused by the severe acute respiratory syndrome coronavirus in 2019. Although the real-time reverse transcription (RT)-PCR test for viral nucleic acids is the gold standard for COVID-19 diagnosis, computed tomography (CT) has grown in importance.

Research motivation

There is a risk of unintentional use because CT contains ionizing radiation. Ionizing radiation is expected to cause more harm to children than to adults.

Research objectives

We aim to define the change of the CT findings as well as the sensitivity and the specificity of these findings according to age.

Research methods

The study included 411 patients with suspected COVID-19 who sought treatment at a tertiary healthcare facility. RT-PCR testing of respiratory secretions obtained *via* nasopharyngeal or oropharyngeal swab was performed on all patients. Clinical information from electronic medical records was examined. On the day they were admitted to the hospital, all patients had a CT scan without intravenous contrast material. Three thorax imaging experts who were not aware of the RT-PCR test results reviewed all CT images, and the final decision was reached by consensus. When calculating the sensitivity, specificity, and significance for CT positivity, the patients were divided into nine groups based on decades. The group was defined as people aged 80 and up for the ninth group. The sensitivity, specificity, and significance of CT findings into three groups (age group 1: 0-18, age group 2: 18-60, age group 3: 60 and above) was determined.

Research results

There were 181 positive RT-PCR results and 230 negative RT-PCR results out of 411 patients, for a positive rate of 41% (181/411). There were 141 positive and 40 negative CT findings in 181 cases, for a positive rate of 77.9% (141/181). CT sensitivity was found to be 77.9% (95% confidence interval: 71.15 to 83.72) for all patients. The findings revealed that the sensitivity of CT increased with age. Ground glass opacity had the highest diagnostic accuracy of 62.5%, followed by vascular enlargement at 58.5% and bronchial dilatation at 58.3%. Lymphadenopathy, pleurisy, pleural thickening, peripheral localization, bilateral, ground glass, vascular enlargement, bronchial dilatation, subpleural band, reticular density, crazy paving appearance, and fibrosis all increased with age ($P < 0.05$).

Research conclusions

Due to the large number of cases, doctors from various fields frequently rely on thoracic CT examination, with the tendency to deviate from algorithms and make an easy and quick diagnosis. The inadequacy of the RT-PCR test contributes to the overuse of thoracic CT. The sensitivity of CT diagnosis in the 0-9 age group was found to be quite low in our study. When a low-dose CT scan is required, it is preferable for the pediatric population. Follow-up imaging is only necessary in cases of clinical deterioration and should be kept to a minimum.

Research perspectives

Further research should be conducted to determine the diagnostic potential of COVID-19 CT findings in relation to age subgroups. Additionally, the findings of this study may raise awareness about the proper use of CT scans in children and contribute to radiation protection by limiting CT scans in age groups with low sensitivity.

FOOTNOTES

Author contributions: Karavaş E and Ünver E were responsible for the conceptualization, methodology, and project administration; Karavaş E did the writing-review & editing; Karavaş E, Aydın S, Yalçın GS, Fatihoglu E, Kuyruklyildiz U, and Yazici M were responsible for the investigation and resources; Aydın S wrote the original draft; Aydın S and Arslan Y performed the data curation and formal analysis.

Institutional review board statement: The study was reviewed and approved by the Erzincan Binali Yildirim University Institutional Review Board (Approval No: 22/06/2020-06/04).

Informed consent statement: The Institutional Ethical Review Board waived informed consent due to the retrospective nature of the study procedure.

Conflict-of-interest statement: The authors whose names are listed immediately above certify that they have NO affiliations with or involvement in any organization or entity with any financial interest or non-financial interest in the subject matter or materials discussed in this manuscript.

Data sharing statement: No additional data are available.

Open-Access: This article is an open-access article that was selected by an in-house editor and fully peer-reviewed by external reviewers. It is distributed in accordance with the Creative Commons Attribution NonCommercial (CC BY-NC 4.0) license, which permits others to distribute, remix, adapt, build upon this work non-commercially, and license their derivative works on different terms, provided the original work is properly cited and the use is non-commercial. See: <https://creativecommons.org/licenses/by-nc/4.0/>

Country/Territory of origin: Turkey

ORCID number: Erdal Karavas 0000-0001-6649-3256; Edhem Ünver 0000-0002-0322-8102; Sonay Aydın 0000-0002-3812-6333; Gonul Seven Yalçın 0000-0002-7751-3774; Erdem Fatihoglu 0000-0003-4192-6638; Ufuk Kuyruklyildiz 0000-0001-6820-0699; Yusuf Kemal Arslan 0000-0003-1308-8569; Mustafa Yazici 0000-0002-3808-1788.

S-Editor: Wu YXJ

L-Editor: Filipodia

P-Editor: Wu YXJ

REFERENCES

- 1 **Zhu N**, Zhang D, Wang W, Li X, Yang B, Song J, Zhao X, Huang B, Shi W, Lu R, Niu P, Zhan F, Ma X, Wang D, Xu W, Wu G, Gao GF, Tan W; China Novel Coronavirus Investigating and Research Team. A Novel Coronavirus from Patients

- with Pneumonia in China, 2019. *N Engl J Med* 2020; **382**: 727-733 [PMID: 31978945 DOI: 10.1056/NEJMoa2001017]
- 2 **WHO**. Coronavirus disease (COVID-19) pandemic. 2020. Available from: <https://www.who.int/emergencies/diseases/novel-coronavirus-2019>
- 3 **Huang C**, Wang Y, Li X, Ren L, Zhao J, Hu Y, Zhang L, Fan G, Xu J, Gu X, Cheng Z, Yu T, Xia J, Wei Y, Wu W, Xie X, Yin W, Li H, Liu M, Xiao Y, Gao H, Guo L, Xie J, Wang G, Jiang R, Gao Z, Jin Q, Wang J, Cao B. Clinical features of patients infected with 2019 novel coronavirus in Wuhan, China. *Lancet* 2020; **395**: 497-506 [PMID: 31986264 DOI: 10.1016/S0140-6736(20)30183-5]
- 4 **Majidi H**, Niksolat F. Chest CT in patients suspected of COVID-19 infection: A reliable alternative for RT-PCR. *Am J Emerg Med* 2020; **38**: 2730-2732 [PMID: 32312575 DOI: 10.1016/j.ajem.2020.04.016]
- 5 **Ai T**, Yang Z, Hou H, Zhan C, Chen C, Lv W, Tao Q, Sun Z, Xia L. Correlation of Chest CT and RT-PCR Testing for Coronavirus Disease 2019 (COVID-19) in China: A Report of 1014 Cases. *Radiology* 2020; **296**: E32-E40 [PMID: 32101510 DOI: 10.1148/radiol.20200642]
- 6 **Sağlık Bakanlığı TC**. Covid-19 Genel bilgiler, epidemiyoloji ve tanı. *Halk Sağlığı Genel Müdürlüğü* 2020; **19**: 1-32 Available from <https://covid19.saglik.gov.tr/>
- 7 **Simpson S**, Kay FU, Abbata S, Bhalla S, Chung JH, Chung M, Henry TS, Kanne JP, Kligerman S, Ko JP, Litt H. Radiological Society of North America Expert Consensus Statement on Reporting Chest CT Findings Related to COVID-19. Endorsed by the Society of Thoracic Radiology, the American College of Radiology, and RSNA - Secondary Publication. *J Thorac Imaging* 2020; **35**: 219-227 [PMID: 32324653 DOI: 10.1097/RTI.0000000000000524]
- 8 **Zhao W**, Zhong Z, Xie X, Yu Q, Liu J. Relation Between Chest CT Findings and Clinical Conditions of Coronavirus Disease (COVID-19) Pneumonia: A Multicenter Study. *AJR Am J Roentgenol* 2020; **214**: 1072-1077 [PMID: 32125873 DOI: 10.2214/AJR.20.22976]
- 9 **Liu J**, Chen T, Yang H, Cai Y, Yu Q, Chen J, Chen Z, Shang QL, Ma C, Chen X, Xiao E. Clinical and radiological changes of hospitalised patients with COVID-19 pneumonia from disease onset to acute exacerbation: a multicentre paired cohort study. *Eur Radiol* 2020; **30**: 5702-5708 [PMID: 32385648 DOI: 10.1007/s00330-020-06916-4]
- 10 **Aydin S**, Kantarci M, Fatihoglu E, Yesilyurt H, Karavas E. COVID-19 CT Severity and Handedness: Is There a Relation? *Imaging Interv* 2021; **28**: 1-5 [DOI: 10.5152/iai.2021.21010]
- 11 **Aydin S**, Unver E, Karavas E, Yalcin S, Kantarci M. Computed tomography at every step: Long coronavirus disease. *Respir Investig* 2021; **59**: 622-627 [PMID: 34210624 DOI: 10.1016/j.resinv.2021.05.014]
- 12 **Aydin S**, Kantarci M, Karavas E, Unver E, Yalcin S, Aydin F. Lung perfusion changes in COVID-19 pneumonia: a dual energy computerized tomography study. *Br J Radiol* 2021; **94**: 20201380 [PMID: 34415201 DOI: 10.1259/bjr.20201380]
- 13 **Hani C**, Trieu NH, Saab I, Dangeard S, Bennani S, Chassagnon G, Revel MP. COVID-19 pneumonia: A review of typical CT findings and differential diagnosis. *Diagn Interv Imaging* 2020; **101**: 263-268 [PMID: 32291197 DOI: 10.1016/j.diii.2020.03.014]
- 14 **Dennie C**, Hague C, Lim RS, Manos D, Memauri BF, Nguyen ET, Taylor J. Canadian Society of Thoracic Radiology/Canadian Association of Radiologists Consensus Statement Regarding Chest Imaging in Suspected and Confirmed COVID-19. *Can Assoc Radiol J* 2020; **71**: 470-481 [PMID: 32380844 DOI: 10.1177/0846537120924606]
- 15 **Chen A**, Huang JX, Liao Y, Liu Z, Chen D, Yang C, Yang RM, Wei X. Differences in Clinical and Imaging Presentation of Pediatric Patients with COVID-19 in Comparison with Adults. *Radiol Cardiothorac Imaging* 2020; **2**: e200117 [PMID: 33778567 DOI: 10.1148/ryct.2020200117]
- 16 **Duan YN**, Zhu YQ, Tang LL, Qin J. CT features of novel coronavirus pneumonia (COVID-19) in children. *Eur Radiol* 2020; **30**: 4427-4433 [PMID: 32291501 DOI: 10.1007/s00330-020-06860-3]
- 17 **Erturk SM**. CT of Coronavirus Disease (COVID-19) Pneumonia: A Reference Standard Is Needed. *AJR Am J Roentgenol* 2020; **215**: W20 [PMID: 32302207 DOI: 10.2214/AJR.20.23286]
- 18 **Bellini MI**, Fresilli D, Lauro A, Mennini G, Rossi M, Catalano C, D'Andrea V, Cantisani V. Liver Transplant Imaging prior to and during the COVID-19 Pandemic. *Biomed Res Int* 2022; **2022**: 7768383 [PMID: 35036437 DOI: 10.1155/2022/7768383]



Published by **Baishideng Publishing Group Inc**
7041 Koll Center Parkway, Suite 160, Pleasanton, CA 94566, USA

Telephone: +1-925-3991568

E-mail: bpgoffice@wjgnet.com

Help Desk: <https://www.f6publishing.com/helpdesk>

<https://www.wjgnet.com>

