

# World Journal of *Virology*

Quarterly Volume 13 Number 1 March 25, 2024



## Contents

Quarterly Volume 13 Number 1 March 25, 2024

## EDITORIAL

Delpino MV, Quarleri J. Perilipin 2 inhibits replication of hepatitis B virus deoxyribonucleic acid by regulating autophagy under high-fat conditions. *World J Virol* 2024; 13(1): 90384 [DOI: [10.5501/wjv.v13.i1.90384](https://doi.org/10.5501/wjv.v13.i1.90384)]

## REVIEW

Musa M, Enaholo E, Aluyi-Osa G, Atuanya GN, Spadea L, Salati C, Zeppieri M. Herpes simplex keratitis: A brief clinical overview. *World J Virol* 2024; 13(1): 89934 [DOI: [10.5501/wjv.v13.i1.89934](https://doi.org/10.5501/wjv.v13.i1.89934)]

## MINIREVIEWS

De Pauli S, Grando M, Miotti G, Zeppieri M. Hepatitis B virus reactivation in patients treated with monoclonal antibodies. *World J Virol* 2024; 13(1): 88487 [DOI: [10.5501/wjv.v13.i1.88487](https://doi.org/10.5501/wjv.v13.i1.88487)]

Bhide M, Singh O, Nasa P, Juneja D. Cytomegalovirus infection in non-immunocompromised critically ill patients: A management perspective. *World J Virol* 2024; 13(1): 89135 [DOI: [10.5501/wjv.v13.i1.89135](https://doi.org/10.5501/wjv.v13.i1.89135)]

## ORIGINAL ARTICLE

## Retrospective Study

Sohail A, Ali H, Patel P, Subramaniam S, Dahiya DS, Sohail AH, Gangwani MK, Satapathy SK. Impact of metabolic dysfunction-associated steatotic liver disease on COVID-19 hospitalizations: A propensity-matched analysis of the United States. *World J Virol* 2024; 13(1): 91149 [DOI: [10.5501/wjv.v13.i1.91149](https://doi.org/10.5501/wjv.v13.i1.91149)]

## Observational Study

Sudevan N, Manrai M, Tilak TVSVGK, Khurana H, Premdeep H. Chronic hepatitis B and occult infection in chemotherapy patients - evaluation in oncology and hemato-oncology settings: The CHOICE study. *World J Virol* 2024; 13(1): 89104 [DOI: [10.5501/wjv.v13.i1.89104](https://doi.org/10.5501/wjv.v13.i1.89104)]

Ali H, Vikash F, Moond V, Khalid F, Jamil AR, Dahiya DS, Sohail AH, Gangwani MK, Patel P, Satapathy SK. Global trends in hepatitis C-related hepatocellular carcinoma mortality: A public database analysis (1999-2019). *World J Virol* 2024; 13(1): 89469 [DOI: [10.5501/wjv.v13.i1.89469](https://doi.org/10.5501/wjv.v13.i1.89469)]

## Basic Study

Sagheb S, Gholamrezanezhad A, Pavlovic E, Karami M, Fakhrzadegan M. Country-based modelling of COVID-19 case fatality rate: A multiple regression analysis. *World J Virol* 2024; 13(1): 87881 [DOI: [10.5501/wjv.v13.i1.87881](https://doi.org/10.5501/wjv.v13.i1.87881)]

Nemr WA, Nashwa RK. Development of a multiplex polymerase chain reaction assay for detection of hepatitis C virus, hepatitis B virus, and human immunodeficiency virus 1. *World J Virol* 2024; 13(1): 88164 [DOI: [10.5501/wjv.v13.i1.88164](https://doi.org/10.5501/wjv.v13.i1.88164)]

## SYSTEMATIC REVIEWS

Cheo FY, Chan KS, Shelat VG. Outcomes of liver resection in hepatitis C virus-related intrahepatic cholangiocarcinoma: A systematic review and meta-analysis. *World J Virol* 2024; 13(1): 88946 [DOI: [10.5501/wjv.v13.i1.88946](https://doi.org/10.5501/wjv.v13.i1.88946)]

**META-ANALYSIS**

**Amani B, Khodavirdilou L, Rajabkhah K, Kardan Moghaddam V, Akbarzadeh A, Amani B.** Efficacy and safety of bamlanivimab in patients with COVID-19: A systematic review and meta-analysis. *World J Virol* 2024; 13(1): 88660 [DOI: [10.5501/wjv.v13.i1.88660](https://doi.org/10.5501/wjv.v13.i1.88660)]

**Juneja D, Jain R, Nasa P.** Dengue induced acute liver failure: A meta summary of case reports. *World J Virol* 2024; 13(1): 91457 [DOI: [10.5501/wjv.v13.i1.91457](https://doi.org/10.5501/wjv.v13.i1.91457)]

**ABOUT COVER**

Peer Reviewer of *World Journal of Virology*, Antonio Romanelli, MD, Doctor, Anaesthesia and Intensive Care, AOU San Giovanni di Dio e Ruggi D'Aragona, Salerno 84131, Italy. antonioromanelli86@gmail.com

**AIMS AND SCOPE**

The primary aim of *World Journal of Virology* (WJV, *World J Virol*) is to provide scholars and readers from various fields of virology with a platform to publish high-quality basic and clinical research articles and communicate their research findings online.

WJV mainly publishes articles reporting research results obtained in the field of virology and covering a wide range of topics including arbovirus infections, viral bronchiolitis, central nervous system viral diseases, coinfection, DNA virus infections, viral encephalitis, viral eye infections, chronic fatigue syndrome, animal viral hepatitis, human viral hepatitis, viral meningitis, opportunistic infections, viral pneumonia, RNA virus infections, sexually transmitted diseases, viral skin diseases, slow virus diseases, tumor virus infections, viremia, and zoonoses.

**INDEXING/ABSTRACTING**

The WJV is now abstracted and indexed in PubMed, PubMed Central, Reference Citation Analysis, China Science and Technology Journal Database, and Superstar Journals Database.

**RESPONSIBLE EDITORS FOR THIS ISSUE**

Production Editor: *Yu-Xi Chen*, Production Department Director: *Xiang Li*, Editorial Office Director: *Jin-Lai Wang*.

**NAME OF JOURNAL**

*World Journal of Virology*

**ISSN**

ISSN 2220-3249 (online)

**LAUNCH DATE**

February 12, 2012

**FREQUENCY**

Quarterly

**EDITORS-IN-CHIEF**

Mahmoud El-Bendary, En-Qiang Chen, Kai Wang

**EXECUTIVE ASSOCIATE EDITORS-IN-CHIEF**

Yu-Chen Fan, Shuai Gao

**EDITORIAL BOARD MEMBERS**

<https://www.wjgnet.com/2220-3249/editorialboard.htm>

**PUBLICATION DATE**

March 25, 2024

**COPYRIGHT**

© 2024 Baishideng Publishing Group Inc

**PUBLISHING PARTNER**

Department of Hepatology, Qilu Hospital of Shandong University

**INSTRUCTIONS TO AUTHORS**

<https://www.wjgnet.com/bpg/gerinfo/204>

**GUIDELINES FOR ETHICS DOCUMENTS**

<https://www.wjgnet.com/bpg/GerInfo/287>

**GUIDELINES FOR NON-NATIVE SPEAKERS OF ENGLISH**

<https://www.wjgnet.com/bpg/gerinfo/240>

**PUBLICATION ETHICS**

<https://www.wjgnet.com/bpg/GerInfo/288>

**PUBLICATION MISCONDUCT**

<https://www.wjgnet.com/bpg/gerinfo/208>

**POLICY OF CO-AUTHORS**

<https://www.wjgnet.com/bpg/GerInfo/310>

**ARTICLE PROCESSING CHARGE**

<https://www.wjgnet.com/bpg/gerinfo/242>

**STEPS FOR SUBMITTING MANUSCRIPTS**

<https://www.wjgnet.com/bpg/GerInfo/239>

**ONLINE SUBMISSION**

<https://www.f6publishing.com>

**PUBLISHING PARTNER's OFFICIAL WEBSITE**

<https://www.qiluhospital.com/list-410-1.html>



## Retrospective Study

# Impact of metabolic dysfunction-associated steatotic liver disease on COVID-19 hospitalizations: A propensity-matched analysis of the United States

Abdullah Sohail, Hassam Ali, Pratik Patel, Subanandhini Subramaniam, Dushyant Singh Dahiya, Amir H Sohail, Manesh Kumar Gangwani, Sanjaya K Satapathy

**Specialty type:** Gastroenterology and hepatology

**Provenance and peer review:** Unsolicited article; Externally peer reviewed.

**Peer-review model:** Single blind

**Peer-review report's scientific quality classification**

Grade A (Excellent): 0  
Grade B (Very good): 0  
Grade C (Good): 0  
Grade D (Fair): 0  
Grade E (Poor): 0

**P-Reviewer:** Lim SYM, Malaysia

**Received:** December 24, 2023

**Peer-review started:** December 24, 2023

**First decision:** January 11, 2024

**Revised:** January 2, 2024

**Accepted:** February 6, 2024

**Article in press:** February 6, 2024

**Published online:** March 25, 2024



**Abdullah Sohail**, Department of Internal Medicine, University of Iowa Roy J and Lucille A Carver College of Medicine, Iowa, IA 52242, United States

**Hassam Ali**, Division of Gastroenterology and Hepatology, East Carolina University/Brody School of Medicine, Greenville, NC 27858, United States

**Pratik Patel**, Department of Gastroenterology, Mather Hospital/Hofstra University Zucker School of Medicine, NY, 11777, United States

**Subanandhini Subramaniam**, Department of Internal Medicine, East Carolina University Brody School of Medicine, Greenville, NC 27834, United States

**Dushyant Singh Dahiya**, Division of Gastroenterology, Hepatology & Motility, The University of Kansas School of Medicine, Kansas City, KS 66160, United States

**Amir H Sohail**, Department of Surgery, University of New Mexico, Albuquerque, NM 87106, United States

**Manesh Kumar Gangwani**, Department of Internal Medicine, The University of Toledo, Toledo, OH 43606, United States

**Sanjaya K Satapathy**, Section on Gastroenterology and Hepatology, North Shore University Hospital and Long Island Jewish Medical Center, Manhasset, NY 11030, United States

**Corresponding author:** Abdullah Sohail, MD, Assistant Professor, Internal Medicine, University of Iowa Roy J and Lucille A Carver College of Medicine, 200 Hawkins Dr, Iowa, IA 52242, United States. [abdullahsohailmd@gmail.com](mailto:abdullahsohailmd@gmail.com)

## Abstract

### BACKGROUND

Metabolic dysfunction-associated steatotic liver disease (MASLD), formally known as nonalcoholic fatty liver disease, is the most common chronic liver disease in the United States. Patients with MASLD have been reported to be at a higher risk of developing severe coronavirus disease 2019 (COVID-19) and death. However, most studies are single-center studies, and nationwide data in the

United States is lacking.

## AIM

To study the influence of MASLD on COVID-19 hospitalizations during the initial phase of the pandemic.

## METHODS

We retrospectively analyzed the 2020 National Inpatient Sample (NIS) database to identify primary COVID-19 hospitalizations based on an underlying diagnosis of MASLD. A matched comparison cohort of COVID-19 hospitalizations without MASLD was identified from NIS after 1: N propensity score matching based on gender, race, and comorbidities, including hypertension, heart failure, diabetes, and cirrhosis. The primary outcomes included inpatient mortality, length of stay, and hospitalization costs. Secondary outcomes included the prevalence of systemic complications.

## RESULTS

A total of 2210 hospitalizations with MASLD were matched to 2210 hospitalizations without MASLD, with a good comorbidity balance. Overall, there was a higher prevalence of severe disease with more intensive care unit admissions (9.5% *vs* 7.2%,  $P = 0.007$ ), mechanical ventilation (7.2% *vs* 5.7%,  $P = 0.03$ ), and septic shock (5.2% *vs* 2.7%,  $P < 0.001$ ) in the MASLD cohort than in the non-MASLD cohort. However, there was no difference in mortality (8.6% *vs* 10%,  $P = 0.49$ ), length of stay (5 d *vs* 5 d,  $P = 0.25$ ), and hospitalization costs (42081.5 \$ *vs* 38614\$,  $P = 0.15$ ) between the MASLD and non-MASLD cohorts.

## CONCLUSION

The presence of MAFLD with or without liver cirrhosis was not associated with increased mortality in COVID-19 hospitalizations; however, there was an increased incidence of severe COVID-19 infection. This data (2020) predates the availability of COVID-19 vaccines, and many MASLD patients have since been vaccinated. It will be interesting to see if these trends are present in the subsequent years of the pandemic.

**Key Words:** COVID-19; Metabolic dysfunction-associated steatotic liver disease; Prevalence; Hospital charges; Inpatient resource utilization

©The Author(s) 2024. Published by Baishideng Publishing Group Inc. All rights reserved.

**Core Tip:** This comprehensive study investigates the impact of metabolic dysfunction-associated steatotic liver disease (MASLD) on the severity of coronavirus disease 2019 (COVID-19) during the early stages of the pandemic, using the 2020 National Inpatient Sample database. It uniquely contrasts COVID-19 hospitalizations with and without MASLD, revealing that while MASLD is not linked to increased mortality, however, it is associated with a heightened risk of severe COVID-19 complications. This pivotal research offers valuable insights into the MASLD-COVID-19 relationship before the widespread availability of vaccines, setting the stage for further exploration into how these trends evolved in the later pandemic years.

**Citation:** Sohail A, Ali H, Patel P, Subramaniam S, Dahiya DS, Sohail AH, Gangwani MK, Satapathy SK. Impact of metabolic dysfunction-associated steatotic liver disease on COVID-19 hospitalizations: A propensity-matched analysis of the United States. *World J Virol* 2024; 13(1): 91149

**URL:** <https://www.wjgnet.com/2220-3249/full/v13/i1/91149.htm>

**DOI:** <https://dx.doi.org/10.5501/wjv.v13.i1.91149>

## INTRODUCTION

Coronavirus disease 2019 (COVID-19) is an ongoing public health emergency with long-term effects on mortality and morbidity. As of November 2023, the World Health Organization has reported over 770 million confirmed cases, resulting in more than 6.9 million deaths worldwide[1]. Although preventive health measures and vaccinations have mitigated the risk of contracting COVID-19 and experiencing adverse outcomes to some extent, individuals with chronic diseases continue to face an elevated likelihood of poor[2]. Among these, chronic liver disease, particularly metabolic dysfunction-associated steatotic liver disease (MASLD), formally known as nonalcoholic fatty liver disease, is presumed to be a high-risk comorbid condition for severe COVID-19 owing to its inherent immune dysregulation[3-5]. MASLD, the hepatic manifestation of metabolic syndrome, comprises a spectrum of diseases ranging from hepatocellular steatosis and steatohepatitis to fibrosis and eventual cirrhosis[6]. MASLD has quickly become the most prevalent etiology of chronic liver disease in the United States[7,8]. MASLD has been linked to severe infections such as community-acquired pneumonia and a decline in lung function[9,10].



A recent case-control study revealed that MASLD did not correlate with increased in-hospital mortality rates, ventilatory assistance requirements, intensive care unit (ICU) admissions, or the total duration of hospital stay[11]. In contrast, other studies have indicated an association between MASLD and severe COVID-19. A recent meta-analysis of 14 studies of 1851 patients with MASLD by Singh *et al*[12] has shed light on the relationship between MASLD and COVID-19, revealing a significantly increased risk of severe COVID-19 outcomes in patients with MASLD. These studies have shown a 1.80-fold increase in the incidence of severe COVID-19 among MASLD patients, although they did not find a significant correlation with COVID-19 mortality. Another meta-analysis by Tao *et al*[13] reported an increased risk of severe infection and higher ICU admissions for MASLD patients, with no significant difference in mortality compared with non-MASLD patients. However, these meta-analyses predominantly included studies outside the United States and were often conducted in single-center settings with small sample sizes. These studies also had a high degree of variability owing to differences in the pandemic stage, data availability, sample sizes, study designs, and healthcare settings. This limitation raises concerns about the generalizability of their findings, especially in diverse populations, such as those in the United States.

Considering these contradictions in the literature, utilizing a large national database, our study aimed to provide a more comprehensive and nationally representative analysis of the impact of MASLD on COVID-19 hospitalizations in the United States.

## MATERIALS AND METHODS

The present study utilized the National Inpatient Sample (NIS) 2020 database from the United States[14]. Detailed information on NIS's design and sampling methods is available at <https://www.hcup-us.ahrq.gov>. The NIS 2020 utilized the International Classification of Diseases (ICD) 10 coding system to store and report data. We used the "U07.1" ICD 10 code, introduced in March 2020 for COVID-19, to identify hospitalizations with a primary diagnosis (DX1) in the NIS 2020 database[15]. Hospitalizations were excluded if patients were < 18 years old, transferred, or had COVID-19 listed as a secondary diagnosis. Additionally, hospitalizations were excluded if there was any history of malignant neoplasms or liver and kidney transplant recipients, as these were deemed high-risk conditions that could confound the present analysis.

### Outcome measures

The primary outcomes included inpatient mortality in COVID-19 patients with MASLD (with and without cirrhosis) and resource utilization, including length of stay and hospitalization costs. Secondary outcomes included the prevalence of systemic complications, including acute hypoxic respiratory failure, the need for mechanical ventilation, septic shock, and cardiac arrhythmias (including supraventricular tachyarrhythmias, ventricular tachyarrhythmias (VT), atrial fibrillation/flutter (Afib/Aflutter), and deep venous thromboembolism.

### Statistical analysis

Statistical analysis was performed using statistical software for data science (STATA 16). We developed matched cohorts (MASLD and non-MASLD) using propensity score matching (PSM) to minimize the effects of hospital- and patient-level confounders. Propensity scores were generated with COVID-19 as the dependent variable and age, sex, cardiac comorbidities (heart failure and valvular dysfunction), hypertension, diabetes mellitus, and compensated and decompensated cirrhosis as independent variables. A 1:1 matching was performed using the command "clip match" (greedy matching) without replacement. Matched observations had a caliper width of 0.01 for the caliper matching variable (propensity scores). Cases and controls were matched 1:1 on age, sex, and Elixhauser comorbidities, including cardiac comorbidities (heart failure and valvular dysfunction), hypertension, diabetes, and cirrhosis (compensated and decompensated), as previously reported[16,17]. The covariate balance was visualized using the two-way plot shown in Figure 1. A two-sample Wilcoxon rank-sum (Mann-Whitney) test was used for continuous variables. The Chi-square test was used to compare categorical variables. The significance threshold was set at  $P < 0.05$ . For logistic regression, hierarchical models were designed using unbalanced variables in PSM (none), and outcomes were reported as odds ratios (OR) with 95% confidence intervals (95%CI) and  $P$  values. Patient consent and institutional review were not necessary, as the NIS is a de-identified, hospital-level, third-party database.

## RESULTS

### Baseline characteristics

Using propensity matching, 2210 hospitalizations with MASLD were matched to 2210 hospitalizations without MASLD. After matching, there was no significant difference in gender, race, hospital region, or hospital location (Table 1). Additionally, there were no differences in comorbidities, including heart failure ( $P = 1.00$ ), arrhythmias ( $P = 1.00$ ), valvular disease ( $P = 1.00$ ), chronic obstructive pulmonary disease ( $P = 1.00$ ), hypertension ( $P = 1.00$ ), diabetes mellitus type 2 ( $P = 1.00$ ), compensated cirrhosis ( $P = 1.00$ ), and decompensated cirrhosis ( $P = 1.00$ ) (Table 2). The median age at admission was significantly lower in the MASLD group (58 years) than in the non-MASLD group (66 years). The gender distribution was identical in both groups, with the majority of patients being female in both groups. Most patients in both groups were white (58.8%). The regional distribution of hospitalizations showed slight variations that were not statist-

**Table 1 Baseline bio-demographic characteristics of coronavirus disease 2019 Hospitalizations with and without metabolic dysfunction-associated steatotic liver disease, *n* (%)**

Characteristics	Non-MASLD	MASLD	<i>P</i> value
<b>Total hospitalizations</b>	2210	2210	
Age in years at admission, median (IQR)	66.0 (56.0, 76.0)	58.0 (47.0, 68.0)	< 0.001
<b>Gender</b>			1
Male	965 (43.7)	965 (43.7)	
Female	1245 (56.3)	1245 (56.3)	
<b>Race</b>			1
White	1300 (58.8)	1300 (58.8)	
Black	125 (5.7)	125 (5.7)	
Hispanic	615 (27.8)	615 (27.8)	
Asian	85 (3.8)	85 (3.8)	
Native American	20 (0.9)	20 (0.9)	
Other	65 (2.9)	65 (2.9)	
<b>Region of the hospital</b>			0.49
Northeast	375 (17.0)	340 (15.4)	
Midwest	535 (24.2)	610 (27.6)	
South	860 (38.9)	885 (40.0)	
West	440 (19.9)	375 (17.0)	
<b>Location/Teaching status of the hospital</b>			0.12
Rural	295 (13.3)	250 (11.3)	
Urban nonteaching	440 (19.9)	345 (15.6)	
Urban teaching	1475 (66.7)	1615 (73.1)	
<b>Primary payer</b>			< 0.001
Medicare	1120 (54.1)	820 (39.2)	
Medicaid	285 (13.8)	310 (14.8)	
Private	595 (28.7)	845 (40.4)	
Other	70 (3.4)	115 (5.5)	
<b>Median household income national quartile for patient ZIP code</b>			0.55
1 <sup>st</sup> (0-25 <sup>th</sup> )	710 (32.8)	760 (35.1)	
2 <sup>nd</sup> (26 <sup>th</sup> -50 <sup>th</sup> )	575 (26.6)	615 (28.4)	
3 <sup>rd</sup> (51 <sup>st</sup> -75 <sup>th</sup> )	540 (24.9)	515 (23.8)	
4 <sup>th</sup> (76 <sup>th</sup> -100 <sup>th</sup> )	340 (15.7)	275 (12.7)	
<b>Disposition of patient</b>			0.28
Discharged to home or self-care (Routine discharge)	1320 (59.7)	1465 (66.3)	
Transfer to short-term hospital	90 (4.1)	50 (2.3)	
Transfer Other: Includes skilled nursing facility, intermediate care facility, Another Type of Facility	265 (12.0)	200 (9.0)	
Home health care	295 (13.3)	280 (12.7)	
Against medical advice	20 (0.9)	25 (1.1)	
<b>Outcomes</b>			
Inpatient mortality	220 (10.0)	190 (8.6)	0.49



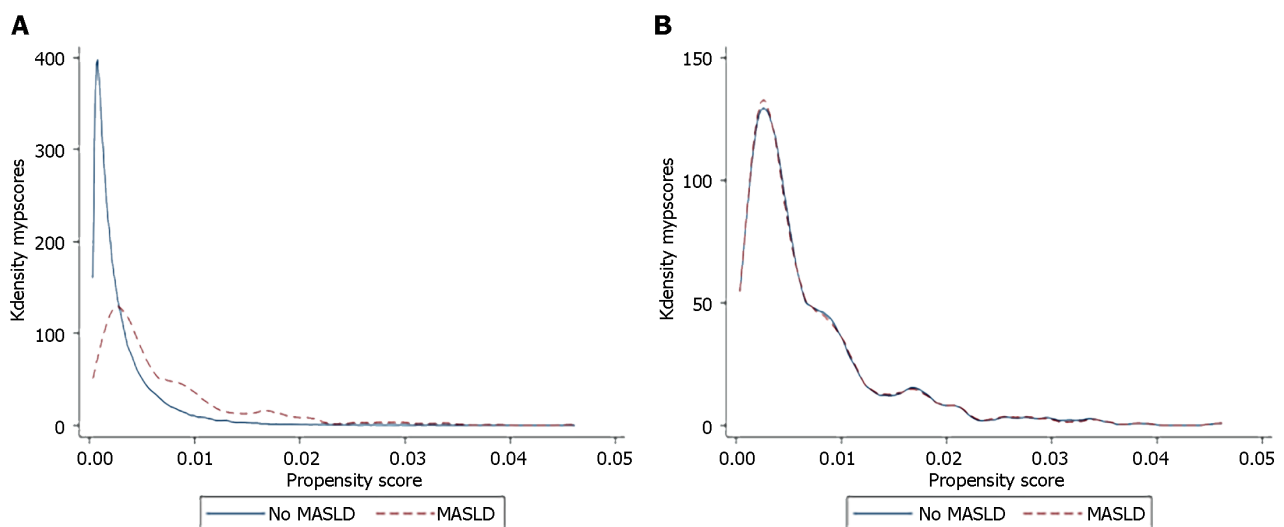
Inpatient mortality in cirrhosis	418 (18.91)	226 (10.22)	0.05
Mechanical ventilation	150 (6.8)	220 (10.0)	< 0.001
ICU admission	160 (7.2)	210 (9.5)	0.007
Length of stay, median (IQR)	5.0 (3.0, 8.0)	5.0 (3.0, 8.0)	0.25
Total charges, median (IQR)	38614.0 (22040.5, 70258.5)	42081.5 (23021.0, 79820.5)	0.15

MASLD: Metabolic dysfunction-associated steatotic liver disease; ICU: Intensive care unit; IQR: Interquartile range.

**Table 2 Inpatient outcomes of coronavirus disease 2019 hospitalizations with and without metabolic dysfunction-associated steatotic liver disease, *n* (%)**

Secondary outcomes	No MASLD	MASLD	<i>P</i> value
Total hospitalizations	2210	2210	
ARDS	125 (5.7)	160 (7.2)	0.032
Hypoxic respiratory failure	1105 (50.0)	1220 (55.2)	< 0.001
Bacterial pneumonia	35 (1.6)	45 (2.0)	0.26
Diarrhea	185 (8.4)	145 (6.6)	0.022
Septic shock	60 (2.7)	115 (5.2)	< 0.001
Supraventricular tachycardia	25 (1.1)	30 (1.4)	0.5
Ventricular tachycardia	10 (0.5)	30 (1.4)	0.001
Atrial fibrillation	165 (7.5)	170 (7.7)	0.78
Aflutter	100 (4.5)	80 (3.6)	0.13
Pulmonary embolism	35 (1.6)	30 (1.4)	0.53
Deep venous thrombosis	75 (3.4)	65 (2.9)	0.39
Compensated cirrhosis	635 (28.7)	635 (28.7)	1
Decompensated cirrhosis	45 (2.0)	45 (2.0)	1

ARDS: Acute respiratory distress syndrome; MASLD: Metabolic dysfunction-associated steatotic liver disease.



**Figure 1 Two-way plot visualizing the covariate balance in our study.** A: Before matching; B: After matching. MASLD: Metabolic dysfunction-associated steatotic liver disease.

ically significant, and most patients in both groups were admitted to urban teaching hospitals. Regarding primary payers, Medicare was the most common payer in the non-MASLD group (54.1%), followed by private payers (40.4%) in the MASLD group. In terms of patient disposition, a higher proportion of patients in both groups were discharged to their homes or self-care (66.3% in MASLD and 59.7% in non-MASLD) (Table 1). The list of the remaining comorbid conditions is presented in Supplementary Table 1.

### Mortality outcomes and subgroup analyses

Overall, there was no difference in mortality between the MASLD and non-MASLD cohorts (8.6% *vs* 10%,  $P = 0.49$ ) (OR 0.85, 95%CI: 0.53-1.34,  $P = 0.48$ ). Subgroup analysis among patients without liver cirrhosis revealed no difference in mortality between the MASLD and non-MASLD cohorts (7.94% *vs* 6.35%,  $P = 0.43$ ) (OR 1.27, 95%CI: 0.96-1.67,  $P = 0.08$ ). However, subgroup analysis among patients with liver cirrhosis revealed higher mortality in non-MASLD patients (cirrhosis due to other causes such as alcohol-related liver disease and chronic viral hepatitis) than in the MASLD cohort (18.91% *vs* 10.22,  $P = 0.05$ ) (OR 2.03, 95%CI: 1.12-4.25,  $P = 0.05$ ).

The prevalence of ICU admission (9.5% *vs* 7.2%,  $P = 0.007$ ), mechanical ventilation (7.2% *vs* 5.7%,  $P = 0.03$ ), septic shock (5.2% *vs* 2.7%,  $P < 0.001$ ), and VT (1.4% *vs* 0.5%,  $P = 0.001$ ) was higher in the MASLD cohort than in the non-MASLD cohort. The two cohorts showed no differences in the median hospital stay (5 d *vs* 5 d,  $P = 0.25$ ) or hospitalization costs (\$42081 in the MASLD group and \$38614 in the non-MASLD group) (Table 1).

## DISCUSSION

Our study is among the first in the United States to analyze the outcomes of COVID-19 among patients with MASLD at the national level. The results revealed that overall mortality did not significantly differ between the MASLD and non-MASLD cohorts in the initial phase of the pandemic. This trend persisted in subgroup analyses; among patients without liver cirrhosis, mortality rates were similar across both cohorts. However, among patients with liver cirrhosis, we found higher mortality in the non-MASLD group, which included patients with cirrhosis due to other causes such as chronic viral hepatitis, alcohol, or autoimmune diseases. Notably, the MASLD cohort exhibited a higher prevalence of ICU admission, mechanical ventilation, septic shock, and arrhythmias, indicating more severe disease. However, despite these differences in clinical outcomes, the two cohorts showed no significant differences in median hospital stay or hospitalization costs.

Our results align with those of several previous studies describing the relationship between MASLD and increased severity of COVID-19. Mahamid *et al*[5] showed that MASLD was associated with increased severity of COVID-19 pneumonia, irrespective of metabolic syndrome. Another retrospective study by Zheng *et al*[18] showed that obesity is associated with a six-fold higher risk of severe COVID-19 in patients with MASLD. This finding was consistent even after adjusting for factors such as age, gender, smoking habits, diabetes, hypertension, and dyslipidemia. In a study of 202 COVID-19 patients, Ji *et al*[19] discovered a correlation between advanced age, male gender, increased body mass index, the presence of MASLD, and a higher rate of comorbidities with the severity of COVID-19. There are conflicting reports on whether MAFLD is independently associated with mortality in COVID-19 patients. Kim *et al*[20] performed a retrospective study involving 867 patients and showed that MAFLD was not an independent predictor of mortality in COVID-19 patients [hazard ratio (HR) = 1.08; 95%CI: 0.59-1.97;  $P = 0.80$ ]. Lopez-Mendez *et al*[21] reported higher mortality in patients with MASLD and COVID-19 (81.8% *vs* 18.2%,  $P = 0.012$ ). In the initial phase of the COVID-19 pandemic, the available data were predominantly sourced from limited case series and observational studies, offering restricted insights. However, with the escalation of the pandemic, there has been a subsequent emergence of large-scale studies. These studies have contributed to a more robust understanding of the implications of COVID-19 on patients with MASLD. Two recent meta-analyses, Singh *et al*[12] and Tao *et al*[13], reported increased severity of COVID-19 in patients with MASLD. However, these studies did not find a significant difference in mortality between MASLD and non-MASLD patients, which is consistent with our results. However, both meta-analyses we examined primarily included studies from outside the United States. They also showed considerable variation because of differences in the pandemic stages, data availability, sample sizes, research methods, and healthcare settings. In contrast, using the largest national-level database in the United States, which encompasses a substantial sample size and diverse demographic coverage, increases the generalizability of our findings. In subgroup analysis, patients without liver cirrhosis showed no significant difference in mortality rates between the MASLD and non-MASLD cohorts. However, among patients with liver cirrhosis in the non-MASLD group (*e.g.*, alcohol-related liver disease and chronic viral hepatitis), there was a higher mortality rate than among those with MASLD-related cirrhosis. This could be explained by previously reported higher rates of complications and mortality among patients with alcohol-related liver diseases in the United States during the initial stages of the pandemic[22,23].

There is ongoing debate regarding the causes of poorer outcomes in certain patients, with various potential factors being studied. One theory suggests that MAFLD aggravates the cytokine storm associated with COVID-19 by promoting the release of inflammatory cytokines from the liver[24,25]. Conversely, it has been hypothesized that the shift in liver immune cells from pro-inflammatory M1 macrophages to pro-inflammatory M2 macrophages, which are regulatory, weakens innate immunity, thereby worsening the patient's condition[19,26]. Recent research supports both theories, showing that MAFLD patients exhibit elevated levels of specific inflammatory cytokines, such as interleukin-6, which plays a significant role in severe cases and treatment, and reduced levels of interferon- $\gamma$ , which is essential for macrophage function[27]. Additionally, the upregulation of proteins facilitating severe acute respiratory syndrome coronavirus 2 (SARS-CoV-2) entry, such as ACE2 and TMPRSS2, particularly in obese patients with MASLD, is another

factor[28]. The close association between fatty liver disease and metabolic syndrome suggests that similar harmful pathophysiological processes may contribute[29]. Our results also indicated that COVID-19 patients with MASLD are at a higher risk of cardiac arrhythmias, including VT. Several MASLD-related pathophysiological factors within the heart result in structural, electrical, and autonomic remodeling, causing arrhythmias[30]. Furthermore, cardiac arrhythmias place patients with COVID-19 at an increased risk of worse outcomes[31].

Regarding resource utilization in United States patients with MASLD and COVID-19 hospitalizations, despite a higher total hospitalization cost in the MASLD group than in the non-MASLD group (with costs of \$42081 and \$38614, respectively), this difference was not statistically significant ( $P = 0.15$ ). Similarly, the mean length of hospital stay in both groups was similar at 5 d ( $P = 0.25$ ). This apparent lack of significant cost disparity despite the presence of more complications in the MASLD group may be attributed to factors such as standardized treatment protocols and variations in cost calculation methodologies. Moreover, uniform insurance and billing practices and potential unaccounted-for confounding factors may have contributed to the unexpected similarity in hospitalization costs. Further investigations involving larger sample sizes and in-depth analyses are warranted to provide more precise insights. Our findings differ from those of previous studies on MASLD without COVID-19. For instance, Allen *et al*[32] reported annual care costs for MASLD patients with private insurance amounting to \$7804 for new diagnoses and \$3789 for long-term management, in contrast to the total annual cost of \$2298 for matched controls without MASLD, underscoring the economic impact of this condition. Additionally, Adejumo *et al*[33] found differences in length of stay and total healthcare costs between genders, with females experiencing a shorter length of stay (4.55 *vs* 4.75 d) and lower total healthcare costs (\$42848.00 *vs* \$47026.00) compared to males. Unlike these studies, our study provides insights into the economic impact of COVID-19 on patients with MASLD. To the best of our knowledge, this is the first study to provide information on the costs associated with hospitalization for COVID-19 in individuals with MASLD across the United States.

While our findings contribute significantly to the current understanding of the relationship between MASLD and COVID-19, they also highlight the need to consider genetic variances as potential modulators of disease severity in patients with MASLD and COVID-19. Research indicates a significant genetic component in the severity of COVID-19, particularly in patients with MASLD. Genetic polymorphisms, such as PNPLA3 (rs738409), GCKR (rs780094), TM6SF2 (rs58542926), and LYPLAL1 (rs12137855), are associated with increased MAFLD risk and may influence COVID-19 outcomes. These genes are linked to lipid metabolism, glucose regulation, and liver function, which are vital for understanding COVID-19 severity in MAFLD patients with MAFLD. However, studies have reported mixed results regarding the impact of these genetic variants on COVID-19 severity, suggesting a complex relationship between these genetic factors and the disease[34]. A bioinformatics and systems biology approach also revealed differentially expressed genes shared between COVID-19 and MAFLD, highlighting the potential common pathogenesis and suggesting therapeutic targets for both conditions[35]. Future research should prioritize identifying genetic markers that predict severe COVID-19 in MASLD patients, aiming for more personalized treatment approaches to improve outcomes. Additionally, understanding the genetic interplay between MASLD and COVID-19 will aid in developing public health strategies and novel therapeutics for high-risk groups, ultimately easing healthcare burdens and enhancing patient care.

We acknowledge a few limitations to our study. We utilized the NIS database, which is subject to coding errors due to its dependence on the ICD-10 coding system. Second, the lack of information regarding medications and laboratory and radiological data has limited our ability to determine the specific baseline characteristics of patients with MASLD and individual patient management strategies. However, we used a validated tool for the Chronic Condition Indicator to assess the comorbidity burden of the patients as an essential prognostic factor. We also used PSM to minimize the effects of comorbid conditions in the comparison cohorts[36]. Third, the scope of this study was limited to inpatient data and did not include information on the outpatient outcomes of patients with MASLD who had non-severe COVID-19. In addition, the Agency of Healthcare Research and Quality recommends using an NIS to derive state-level data, owing to the relatively small contribution from several states. If state-level data were obtainable, it could have been helpful for policy-makers to make certain public health efforts in certain states with more patients with MASLD and COVID-19 infection. Instead, we included geographical regions to study the outcome differences across the United States.

Despite some limitations, our study is the first to analyze and summarize national data on the impact of COVID-19-related hospitalizations in patients with MASLD during the early pandemic phase. The broad scope of our study, characterized by a large sample size and diverse range of participants, enhances the generalizability of our results. This diversity is reflected in the data from hospitals of varying sizes (small, medium, and large) and types (both teaching and non-teaching), as well as different settings, including rural and urban areas. Additionally, the variables included in the database allowed us to examine factors such as hospitalization costs, patient income, and other hospital characteristics, which are not often studied in single-center studies.

## CONCLUSION

In conclusion, our study provides valuable insights into the existing and evolving body of evidence on the impact of COVID-19 in patients with MASLD. Our study showed that the presence of MASLD, with or without progression to liver cirrhosis, did not correlate with elevated mortality rates in patients hospitalized due to COVID-19. However, there was a notable increase in the severity of COVID-19 among this demographic group. It is important to note that this data, collected in 2020, predates the widespread distribution of COVID-19 vaccines. Since then, a significant proportion of patients with MASLD have received vaccination. Future analysis is required to determine whether these observed trends persist or are altered in the subsequent phases of the pandemic. This is important since MASLD is the most common cause of Chronic Liver disease in the US. Moreover, to mitigate the impact of COVID-19 on patients with MASLD, it is

critical to promote preventive measures, such as vaccination and booster doses, and provide timely treatment with advanced COVID-19 therapies.

## ARTICLE HIGHLIGHTS

### Research background

This study focused on the impact of metabolic dysfunction-associated steatotic liver disease (MASLD) on the severity and outcomes of coronavirus disease 2019 (COVID-19) hospitalizations. MASLD, formerly known as nonalcoholic fatty liver disease, is becoming increasingly prevalent and has been linked to more severe infectious diseases.

### Research motivation

This study was motivated by a lack of comprehensive nationwide data on the relationship between the MASLD and COVID-19 outcomes in the United States. Previous studies have often been limited in scope, highlighting the need for more extensive research in this area.

### Research objectives

The primary objective of this study was to analyze the impact of MASLD on the severity and outcomes of COVID-19 hospitalizations, particularly assessing the rates of intensive care unit (ICU) admission, mechanical ventilation, septic shock, and mortality in the United States.

### Research methods

We conducted a retrospective analysis of the National Inpatient Sample 2020 database. This study utilized propensity score matching to compare COVID-19 hospitalizations with and without MASLD, controlling for demographics and comorbidities.

### Research results

The study found that patients have a higher rate of severe COVID-19 outcomes, such as increased ICU admissions, need for mechanical ventilation, and septic shock. However, no significant difference in mortality rate was observed between patients with and without MASLD.

### Research conclusions

MASLD is associated with an increased risk of severe COVID-19 complications but does not necessarily correlate with higher mortality. This finding is vital for healthcare providers in managing high-risk patient groups.

### Research perspectives

Future research should investigate the genetic factors influencing MASLD's impact on COVID-19 to identify specific genetic markers that predict severe outcomes. This could lead to more personalized healthcare strategies and inform public health policies, particularly for high-risk groups. Further studies are needed to explore the economic impact and develop effective treatment protocols for MASLD patients with COVID-19.

## FOOTNOTES

**Author contributions:** Sohail A, Ali H, Patel P, Dahiya DS, and Sohail AH were involved in the study's conception, design, data collection, results interpretation, initial drafting, and substantial revisions for the manuscript's intellectual content; Gangwani MK and Subramaniam S played key roles in analyzing data, interpreting findings, and contributing to the manuscript's draft; Satapathy SK provided significant manuscript enhancements through thoughtful revisions and relevant suggestions; Furthermore, all authors engaged in a review, modification, and final approval of the manuscript, ensuring responsibility for every aspect of the work.

**Institutional review board statement:** The National Inpatient Sample is an anonymized database at the hospital level managed by a third party. It is specifically designed to maintain the confidentiality of patients, healthcare providers, and medical institutions. Since the data related to hospitalizations is devoid of any personal identifiers of patients, the requirement for patient consent was exempted from this study. Additionally, the nature of this de-identified data negated the need for approval from an institutional review board.

**Informed consent statement:** The National Inpatient Sample is an anonymized database at the hospital level, managed by a third party. It is specifically designed to maintain the confidentiality of patients, healthcare providers, and medical institutions. Since the data related to hospitalizations is devoid of any personal identifiers of patients, the requirement for patient consent was exempted for this study.

**Conflict-of-interest statement:** Conflict of Interest Statement: The authors of this article declare that they have no conflict of interest to report. None of the authors have received any fees for serving as speakers, consultants, or advisory board members for any organizations. There has been no receipt of research funding from any organizations. Additionally, none of the authors are employees of any organizations that may have an interest in the subject matter of this study.



**Data sharing statement:** Not available.

**Open-Access:** This article is an open-access article that was selected by an in-house editor and fully peer-reviewed by external reviewers. It is distributed in accordance with the Creative Commons Attribution NonCommercial (CC BY-NC 4.0) license, which permits others to distribute, remix, adapt, build upon this work non-commercially, and license their derivative works on different terms, provided the original work is properly cited and the use is non-commercial. See: <https://creativecommons.org/licenses/by-nc/4.0/>

**Country/Territory of origin:** United States

**ORCID number:** Abdullah Sohail 0000-0002-1240-6441; Hassam Ali 0000-0001-5546-9197; Dushyant Singh Dahiya 0000-0002-8544-9039; Manesh Kumar Gangwani 0000-0002-3931-6163; Sanjaya K Satapathy 0000-0003-0153-2829.

**Corresponding Author's Membership in Professional Societies:** American Association for the Study of Liver Diseases; American College of Gastroenterology; American Society for Gastrointestinal Endoscopy.

**S-Editor:** Liu JH

**L-Editor:** A

**P-Editor:** Chen YX

## REFERENCES

- 1 **World Health Organization.** Who coronavirus (COVID-19) dashboard. 2022. World Health Organization. 2023 [cited 2023 12]; Available from: <https://covid19.who.int/>
- 2 **Gao YD,** Ding M, Dong X, Zhang JJ, Kursat Azkur A, Azkur D, Gan H, Sun YL, Fu W, Li W, Liang HL, Cao YY, Yan Q, Cao C, Gao HY, Brüggem MC, van de Veen W, Sokolowska M, Akdis M, Akdis CA. Risk factors for severe and critically ill COVID-19 patients: A review. *Allergy* 2021; **76**: 428-455 [PMID: 33185910 DOI: 10.1111/all.14657]
- 3 **Nagarajan R,** Krishnamoorthy Y, Rajaa S, Hariharan VS. COVID-19 Severity and Mortality Among Chronic Liver Disease Patients: A Systematic Review and Meta-Analysis. *Prev Chronic Dis* 2022; **19**: E53 [PMID: 36007255 DOI: 10.5888/pcd19.210228]
- 4 **Anirvan P,** Singh SP, Giammarino A, Satapathy SK. Association of non-alcoholic fatty liver disease and COVID-19: A literature review of current evidence. *World J Hepatol* 2021; **13**: 916-925 [PMID: 34552698 DOI: 10.4254/wjh.v13.i8.916]
- 5 **Mahamid M,** Nseir W, Khoury T, Mahamid B, Nubania A, Sub-Laban K, Schifter J, Mari A, Sbeit W, Goldin E. Nonalcoholic fatty liver disease is associated with COVID-19 severity independently of metabolic syndrome: a retrospective case-control study. *Eur J Gastroenterol Hepatol* 2021; **33**: 1578-1581 [PMID: 32868652 DOI: 10.1097/MEG.0000000000001902]
- 6 **Younossi ZM,** Blissett D, Blissett R, Henry L, Stepanova M, Younossi Y, Racila A, Hunt S, Beckerman R. The economic and clinical burden of nonalcoholic fatty liver disease in the United States and Europe. *Hepatology* 2016; **64**: 1577-1586 [PMID: 27543837 DOI: 10.1002/hep.28785]
- 7 **Ahmed A,** Wong RJ, Harrison SA. Nonalcoholic Fatty Liver Disease Review: Diagnosis, Treatment, and Outcomes. *Clin Gastroenterol Hepatol* 2015; **13**: 2062-2070 [PMID: 26226097 DOI: 10.1016/j.cgh.2015.07.029]
- 8 **Fassio E,** Alvarez E, Domínguez N, Landeira G, Longo C. Natural history of nonalcoholic steatohepatitis: a longitudinal study of repeat liver biopsies. *Hepatology* 2004; **40**: 820-826 [PMID: 15382171 DOI: 10.1002/hep.20410]
- 9 **Lee CH,** Choi SH, Chung GE, Park B, Kwak MS. Nonalcoholic fatty liver disease is associated with decreased lung function. *Liver Int* 2018; **38**: 2091-2100 [PMID: 29660233 DOI: 10.1111/liv.13860]
- 10 **Nseir WB,** Mograbi JM, Amara AE, Abu Elheja OH, Mahamid MN. Non-alcoholic fatty liver disease and 30-day all-cause mortality in adult patients with community-acquired pneumonia. *QJM* 2019; **112**: 95-99 [PMID: 30325458 DOI: 10.1093/qjmed/hcy227]
- 11 **Madan K,** Rastogi R, Bhargava R, Dagar V, Singla V, Sahu A, Singh P, Garg P, Aggarwal B, Singh RK. Is Fatty Liver Associated with Increased Mortality and Morbidity in Coronavirus Disease 2019 (COVID-19) Pneumonia? *J Clin Exp Hepatol* 2022; **12**: 1320-1327 [PMID: 35469129 DOI: 10.1016/j.jceh.2022.04.013]
- 12 **Singh A,** Hussain S, Antony B. Non-alcoholic fatty liver disease and clinical outcomes in patients with COVID-19: A comprehensive systematic review and meta-analysis. *Diabetes Metab Syndr* 2021; **15**: 813-822 [PMID: 33862417 DOI: 10.1016/j.dsx.2021.03.019]
- 13 **Tao Z,** Li Y, Cheng B, Zhou T, Gao Y. Risk of Severe COVID-19 Increased by Metabolic Dysfunction-associated Fatty Liver Disease: A Meta-analysis. *J Clin Gastroenterol* 2021; **55**: 830-835 [PMID: 34406175 DOI: 10.1097/MCG.0000000000001605]
- 14 **Khera R,** Angraal S, Couch T, Welsh JW, Nallamotheu BK, Girotra S, Chan PS, Krumholz HM. Adherence to Methodological Standards in Research Using the National Inpatient Sample. *JAMA* 2017; **318**: 2011-2018 [PMID: 29183077 DOI: 10.1001/jama.2017.17653]
- 15 **Clausen S,** Stahlman S, Cost A. Early use of ICD-10-CM code "U07.1, COVID-19" to identify 2019 novel coronavirus cases in Military Health System administrative data. *MSMR* 2020; **27**: 55-59 [PMID: 32479104]
- 16 **Ali H,** Shamon S, Bolick NL, Manickam S, Sattar U, Poola S, Mudireddy P. Outcomes of endoscopic retrograde cholangiopancreatography-guided gallbladder drainage compared to percutaneous cholecystostomy in acute cholecystitis. *Ann Hepatobiliary Pancreat Surg* 2023; **27**: 56-62 [PMID: 36536503 DOI: 10.14701/ahbps.22-065]
- 17 **Patel P,** Ali H, Manickam S, Pamarthy R, Fatakhova K, Rajapakse R. Substance abuse and inpatient outcomes in inflammatory bowel disease hospitalizations in the United States: a propensity matched analysis. *Ann Gastroenterol* 2023; **36**: 32-38 [PMID: 36593809 DOI: 10.20524/aog.2022.0767]
- 18 **Zheng KI,** Gao F, Wang XB, Sun QF, Pan KH, Wang TY, Ma HL, Chen YP, Liu WY, George J, Zheng MH. Letter to the Editor: Obesity as a risk factor for greater severity of COVID-19 in patients with metabolic associated fatty liver disease. *Metabolism* 2020; **108**: 154244 [PMID: 32320741 DOI: 10.1016/j.metabol.2020.154244]
- 19 **Ji D,** Qin E, Xu J, Zhang D, Cheng G, Wang Y, Lau G. Non-alcoholic fatty liver diseases in patients with COVID-19: A retrospective study. *J*

- Hepatology* 2020; **73**: 451-453 [PMID: 32278005 DOI: 10.1016/j.jhep.2020.03.044]
- 20 **Kim D**, Adeniji N, Latt N, Kumar S, Bloom PP, Aby ES, Perumalswami P, Roytman M, Li M, Vogel AS, Catana AM, Wegermann K, Carr RM, Aloman C, Chen VL, Rabiee A, Sadowski B, Nguyen V, Dunn W, Chavin KD, Zhou K, Lizaola-Mayo B, Moghe A, Debes J, Lee TH, Branch AD, Viveiros K, Chan W, Chascsa DM, Kwo P, Dhanasekaran R. Predictors of Outcomes of COVID-19 in Patients With Chronic Liver Disease: US Multi-center Study. *Clin Gastroenterol Hepatol* 2021; **19**: 1469-1479.e19 [PMID: 32950749 DOI: 10.1016/j.cgh.2020.09.027]
  - 21 **Lopez-Mendez I**, Aquino-Matus J, Gall SM, Prieto-Nava JD, Juarez-Hernandez E, Uribe M, Castro-Narro G. Association of liver steatosis and fibrosis with clinical outcomes in patients with SARS-CoV-2 infection (COVID-19). *Ann Hepatol* 2021; **20**: 100271 [PMID: 33099028 DOI: 10.1016/j.aohp.2020.09.015]
  - 22 **Yeo YH**, He X, Lv F, Zhao Y, Liu Y, Yang JD, Zu J, Ji F, Nguyen MH. Trends of Cirrhosis-related Mortality in the USA during the COVID-19 Pandemic. *J Clin Transl Hepatol* 2023; **11**: 751-756 [PMID: 36969898 DOI: 10.14218/JCTH.2022.00313]
  - 23 **Gao X**, Lv F, He X, Zhao Y, Liu Y, Zu J, Henry L, Wang J, Yeo YH, Ji F, Nguyen MH. Impact of the COVID-19 pandemic on liver disease-related mortality rates in the United States. *J Hepatol* 2023; **78**: 16-27 [PMID: 35988691 DOI: 10.1016/j.jhep.2022.07.028]
  - 24 **Sharma P**, Kumar A. Metabolic dysfunction associated fatty liver disease increases risk of severe Covid-19. *Diabetes Metab Syndr* 2020; **14**: 825-827 [PMID: 32540736 DOI: 10.1016/j.dsx.2020.06.013]
  - 25 **Targher G**, Mantovani A, Byrne CD, Wang XB, Yan HD, Sun QF, Pan KH, Zheng KI, Chen YP, Eslam M, George J, Zheng MH. Risk of severe illness from COVID-19 in patients with metabolic dysfunction-associated fatty liver disease and increased fibrosis scores. *Gut* 2020; **69**: 1545-1547 [PMID: 32414813 DOI: 10.1136/gutjnl-2020-321611]
  - 26 **Lefere S**, Tacke F. Macrophages in obesity and non-alcoholic fatty liver disease: Crosstalk with metabolism. *JHEP Rep* 2019; **1**: 30-43 [PMID: 32149275 DOI: 10.1016/j.jhepr.2019.02.004]
  - 27 **Tasoudis PT**, Arvaniti CK, Adamou AT, Belios I, Stone JH, Horick N, Sagris D, Dalekos GN, Ntaios G. Interleukin-6 inhibitors reduce mortality in coronavirus disease-2019: An individual patient data meta-analysis from randomized controlled trials. *Eur J Intern Med* 2022; **101**: 41-48 [PMID: 35422374 DOI: 10.1016/j.ejim.2022.04.004]
  - 28 **Eslam M**, Newsome PN, Sarin SK, Anstee QM, Targher G, Romero-Gomez M, Zelber-Sagi S, Wai-Sun Wong V, Dufour JF, Schattenberg JM, Kawaguchi T, Arrese M, Valenti L, Shiha G, Tiribelli C, Yki-Järvinen H, Fan JG, Grønbaek H, Yilmaz Y, Cortez-Pinto H, Oliveira CP, Bedossa P, Adams LA, Zheng MH, Fouad Y, Chan WK, Mendez-Sanchez N, Ahn SH, Castera L, Bugianesi E, Ratzu V, George J. A new definition for metabolic dysfunction-associated fatty liver disease: An international expert consensus statement. *J Hepatol* 2020; **73**: 202-209 [PMID: 32278004 DOI: 10.1016/j.jhep.2020.03.039]
  - 29 **Nowroozi A**, Momtazmanesh S, Rezaei N. COVID-19 and MAFLD/NAFLD: An updated review. *Front Med (Lausanne)* 2023; **10**: 1126491 [PMID: 37035343 DOI: 10.3389/fmed.2023.1126491]
  - 30 **Targher G**, Byrne CD, Tilg H. NAFLD and increased risk of cardiovascular disease: clinical associations, pathophysiological mechanisms and pharmacological implications. *Gut* 2020; **69**: 1691-1705 [PMID: 32321858 DOI: 10.1136/gutjnl-2020-320622]
  - 31 **Chen Z**, Liu J, Zhou F, Li H, Zhang XJ, She ZG, Lu Z, Cai J. Nonalcoholic Fatty Liver Disease: An Emerging Driver of Cardiac Arrhythmia. *Circ Res* 2021; **128**: 1747-1765 [PMID: 34043417 DOI: 10.1161/CIRCRESAHA.121.319059]
  - 32 **Allen AM**, Van Houten HK, Sangaralingham LR, Talwalkar JA, McCoy RG. Healthcare Cost and Utilization in Nonalcoholic Fatty Liver Disease: Real-World Data From a Large U.S. Claims Database. *Hepatology* 2018; **68**: 2230-2238 [PMID: 29774589 DOI: 10.1002/hep.30094]
  - 33 **Adejumo AC**, Samuel GO, Adegba OM, Adejumo KL, Ojelabi O, Akanbi O, Ogundipe OA, Pani L. Prevalence, trends, outcomes, and disparities in hospitalizations for nonalcoholic fatty liver disease in the United States. *Ann Gastroenterol* 2019; **32**: 504-513 [PMID: 31474798 DOI: 10.20524/aog.2019.0402]
  - 34 **Buchynskiy M**, Oksenysh V, Kamyshna I, Vari SG, Kamyshnyi A. Genetic Predictors of Comorbid Course of COVID-19 and MAFLD: A Comprehensive Analysis. *Viruses* 2023; **15** [PMID: 37632067 DOI: 10.3390/v15081724]
  - 35 **Huang T**, Zheng D, Song Y, Pan H, Qiu G, Xiang Y, Wang Z, Wang F. Demonstration of the impact of COVID-19 on metabolic associated fatty liver disease by bioinformatics and system biology approach. *Medicine (Baltimore)* 2023; **102**: e34570 [PMID: 37657050 DOI: 10.1097/MD.00000000000034570]
  - 36 **Austin PC**. Balance diagnostics for comparing the distribution of baseline covariates between treatment groups in propensity-score matched samples. *Stat Med* 2009; **28**: 3083-3107 [PMID: 19757444 DOI: 10.1002/sim.3697]





Published by **Baishideng Publishing Group Inc**  
7041 Koll Center Parkway, Suite 160, Pleasanton, CA 94566, USA

**Telephone:** +1-925-3991568

**E-mail:** [office@baishideng.com](mailto:office@baishideng.com)

**Help Desk:** <https://www.f6publishing.com/helpdesk>

<https://www.wjgnet.com>

