

# World Journal of *Nephrology*

*World J Nephrol* 2022 January 25; 11(1): 1-38



**OPINION REVIEW**

- 1 Renal cell carcinoma and viral infections: A dangerous relationship?  
*Bersanelli M, Casartelli C, Buti S, Porta C*

**REVIEW**

- 13 Literature review of the mechanisms of acute kidney injury secondary to acute liver injury  
*Platt E, Klootwijk E, Salama A, Davidson B, Robertson F*

**ORIGINAL ARTICLE****Retrospective Study**

- 30 Unilateral hypoplastic kidney in adults: An experience of a tertiary-level urology center  
*Gadelkareem RA, Mohammed N*

**ABOUT COVER**

Editorial Board Member of *World Journal of Nephrology*, Aristeidis Stavroulopoulos, MD, Chief Medical Officer of Pan Health Group, Ploutarchou 4, Athens 10675, Greece; Director of the Athens Kidney Institute Nephroexpert, Christovasilis 3, Athens 14562, Greece

**AIMS AND SCOPE**

The primary aim of *World Journal of Nephrology* (WJN, *World J Nephrol*) is to provide scholars and readers from various fields of nephrology with a platform to publish high-quality basic and clinical research articles and communicate their research findings online.

WJN mainly publishes articles reporting research results obtained in the field of nephrology and covering a wide range of topics including acute kidney injury, acute or chronic interstitial nephritis, AIDS-associated nephropathy, anuria, chronic kidney disease and related complications, CKD-MBD, diabetes insipidus, diabetic nephropathies, Fanconi syndrome, glomerular diseases, inborn or acquired errors renal tubular transport, renal hypertension, kidney cortex necrosis, renal artery obstruction, renal nutcracker syndrome, renal tuberculosis, renal tubular acidosis, thrombotic microangiopathy, uremia, and Zellweger syndrome, *etc.*

**INDEXING/ABSTRACTING**

The WJN is now abstracted and indexed in PubMed, PubMed Central, China National Knowledge Infrastructure (CNKI), China Science and Technology Journal Database (CSTJ), and Superstar Journals Database.

**RESPONSIBLE EDITORS FOR THIS ISSUE**

Production Editor: Rui-Rui Wu, Production Department Director: Xiang Li, Editorial Office Director: Yan-Xia Xing.

**NAME OF JOURNAL**

*World Journal of Nephrology*

**ISSN**

ISSN 2220-6124 (online)

**LAUNCH DATE**

February 6, 2012

**FREQUENCY**

Bimonthly

**EDITORS-IN-CHIEF**

Li Zuo

**EDITORIAL BOARD MEMBERS**

<https://www.wjnet.com/2220-6124/editorialboard.htm>

**PUBLICATION DATE**

January 25, 2022

**COPYRIGHT**

© 2022 Baishideng Publishing Group Inc

**INSTRUCTIONS TO AUTHORS**

<https://www.wjnet.com/bpg/gerinfo/204>

**GUIDELINES FOR ETHICS DOCUMENTS**

<https://www.wjnet.com/bpg/gerinfo/287>

**GUIDELINES FOR NON-NATIVE SPEAKERS OF ENGLISH**

<https://www.wjnet.com/bpg/gerinfo/240>

**PUBLICATION ETHICS**

<https://www.wjnet.com/bpg/gerinfo/288>

**PUBLICATION MISCONDUCT**

<https://www.wjnet.com/bpg/gerinfo/208>

**ARTICLE PROCESSING CHARGE**

<https://www.wjnet.com/bpg/gerinfo/242>

**STEPS FOR SUBMITTING MANUSCRIPTS**

<https://www.wjnet.com/bpg/gerinfo/239>

**ONLINE SUBMISSION**

<https://www.f6publishing.com>



## Literature review of the mechanisms of acute kidney injury secondary to acute liver injury

Esther Platt, Enriko Klootwijk, Alan Salama, Brian Davidson, Francis Robertson

**ORCID number:** Esther Platt 0000-0003-3248-2414; Enriko Klootwijk 0000-0002-7447-4167; Alan Salama 0000-0002-9255-9092; Brian Davidson 0000-0002-9152-5907; Francis Robertson 0000-0001-5016-5944.

**Author contributions:** Platt E wrote the manuscript which was reviewed and edited by all authors; all authors contributed to the design of the manuscript and reviewed the final manuscript prior to submission.

**Conflict-of-interest statement:** No author has any conflict of interest to declare.

**Country/Territory of origin:** United Kingdom

**Specialty type:** Surgery

**Provenance and peer review:** Invited article; Externally peer reviewed.

**Peer-review model:** Single blind

**Peer-review report's scientific quality classification**

Grade A (Excellent): 0  
Grade B (Very good): B  
Grade C (Good): 0  
Grade D (Fair): D, D  
Grade E (Poor): 0

**Open-Access:** This article is an open-access article that was

**Esther Platt, Brian Davidson, Francis Robertson,** Division of Surgery and Interventional Science, University College London, London NW3 2QG, United Kingdom

**Enriko Klootwijk, Alan Salama,** Department of Renal Medicine, University College London, London NW3 2PF, United Kingdom

**Corresponding author:** Esther Platt, FRCS (Gen Surg), MA, MBBS, Surgeon, Department of Surgery and Interventional Science, University College London, Royal Free Campus, University College London, No. 9 Floor Royal Free Hospital, Pond Street, London NW3 2QG, United Kingdom. [esther.platt.20@ucl.ac.uk](mailto:esther.platt.20@ucl.ac.uk)

### Abstract

People exposed to liver ischaemia reperfusion (IR) injury often develop acute kidney injury and the combination is associated with significant morbidity and mortality. Molecular mediators released by the liver in response to IR injury are the likely cause of acute kidney injury (AKI) in this setting, but the mediators have not yet been identified. Identifying the mechanism of injury will allow the identification of therapeutic targets which may modulate both liver IR injury and AKI following liver IR injury.

**Key Words:** Liver failure; Liver transplantation; Ischaemia-reperfusion injury; Acute kidney injury; Liver

©The Author(s) 2022. Published by Baishideng Publishing Group Inc. All rights reserved.

**Core Tip:** Acute kidney injury (AKI) following liver injury is likely to be mediated by circulating molecules. Further investigation is required to identify therapeutic targets to modify liver injury and AKI and reduce the morbidity and mortality associated with this condition.

**Citation:** Platt E, Klootwijk E, Salama A, Davidson B, Robertson F. Literature review of the mechanisms of acute kidney injury secondary to acute liver injury. *World J Nephrol* 2022; 11(1): 13-29

**URL:** <https://www.wjnet.com/2220-6124/full/v11/i1/13.htm>

**DOI:** <https://dx.doi.org/10.5527/wjn.v11.i1.13>

selected by an in-house editor and fully peer-reviewed by external reviewers. It is distributed in accordance with the Creative Commons Attribution NonCommercial (CC BY-NC 4.0) license, which permits others to distribute, remix, adapt, build upon this work non-commercially, and license their derivative works on different terms, provided the original work is properly cited and the use is non-commercial. See: <http://creativecommons.org/licenses/by-nc/4.0/>

**Received:** February 25, 2021

**Peer-review started:** February 25, 2021

**First decision:** May 3, 2021

**Revised:** May 4, 2021

**Accepted:** December 25, 2021

**Article in press:** December 25, 2021

**Published online:** January 25, 2022

**P-Reviewer:** Xu XY

**S-Editor:** Wu YXJ

**L-Editor:** A

**P-Editor:** Wu YXJ



## INTRODUCTION

Ischaemia reperfusion (IR) injury is typified by initial hypoperfusion and inadequate oxygen supply to end organs. This is followed by a secondary inflammatory reperfusion injury which impacts organ function and may affect distant organs[1]. IR injury can occur as part of a global hypoperfusion phenomenon such as that seen in trauma, sepsis and haemorrhage[1-4]. IR injury may also represent a local issue of poor perfusion that primarily affects a single organ or body region.

In the clinical setting, liver IR injury is commonly seen following liver resection and liver transplantation (LT)[5]. Liver IR injury following transplant is associated with major complications related to the liver injury, including early allograft dysfunction, primary nonfunction and ischaemic-type biliary complications[6,7]. In addition to liver specific outcomes, secondary organ injury may occur, which also increases the morbidity and mortality of liver transplantation and resection. Acute kidney injury (AKI) in particular, is very strongly linked to liver IR injury following liver transplantation[8,9]. 40% of liver transplant patients develop AKI, and 7% require renal replacement therapy (RRT)[10]. These patients have an increased mortality with a mortality odds ratio of 2.96, increasing to 8.15 in severe AKI with RRT requirement [10]. AKI post LT is also associated with graft failure, prolonged intensive care unit stay, delay to hospital discharge and subsequent development of chronic kidney disease (CKD)[10-14]. Post-transplant CKD is independently associated with an increase in late mortality and cardiovascular events[11].

Supportive treatment of AKI with renal replacement therapy does not resolve the excess mortality and poor outcomes associated with this condition[15,16]. This may be because AKI needing RRT is a marker of a more global injury affecting the function and viability of multiple organs[15].

There are no specific drug therapies that reverse AKI or block its development. This may in part be related to the overall lack of understanding of the mechanisms underlying the development of AKI following liver IR injury. An improved understanding of the underlying mechanisms of injury is likely to facilitate development of new strategies to avoid and downregulate injury, provide targets for new therapies and improve clinical outcomes post liver transplantation and resection. In the context of liver transplantation, effective therapeutic interventions for both liver IR injury and AKI would also allow expansion of the donor organ pool by inclusion of more marginal grafts, which are more susceptible to IR injury.

In recent years, the indications for liver transplantation have been expanded to include the treatment of primary hepatocellular carcinoma and carefully selected patient groups with some forms of metastatic disease[17,18]. Meeting this potential enormous expansion in transplant demand would necessitate the routine use of marginal grafts. Marginal grafts include those with background hepatic steatosis, grafts from donors following cardiac death and prolonged graft ischaemia times[19, 20]. They are especially susceptible to IR injury and are associated with an increased incidence of AKI and higher mortality[19]. The lack of therapeutic interventions which either provide recipient renal protection from significant liver IR injury or downregulate liver IR injury continues to limit the use of marginal grafts in liver transplantation[21]. Addressing these issues has the potential to revolutionise the use of marginal grafts and meet the current deficit between graft supply and demand.

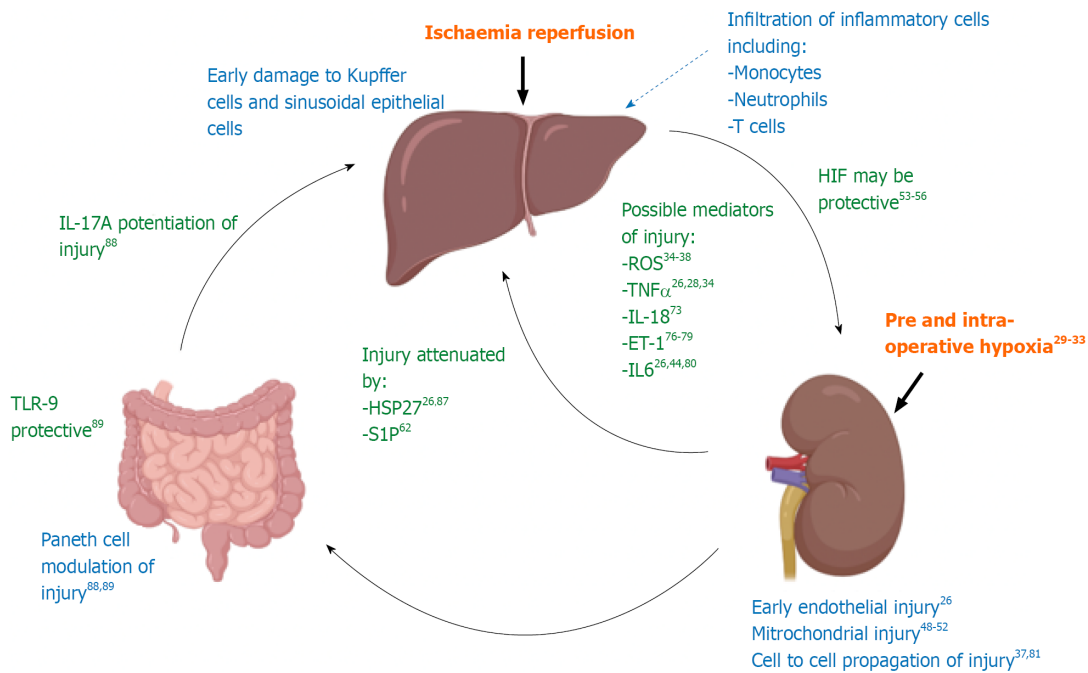
The clinical importance of both liver IR injury and resultant AKI is clear. Several recent reviews have addressed either mechanisms of liver IR injury or clinical aspects of liver IR injury and AKI. However, no prior review has explored the experimental and clinical evidence for the link between liver IR injury and AKI and the mechanisms mediating AKI after liver transplantation. With a recent expansion in the primary literature on this topic, we believe a review is now warranted to crystallise current understanding, identify unanswered questions and to prioritise future research. In this review we will pull together current evidence for the molecular and physiological mechanisms of kidney injury following liver IR injury.

**Figure 1** provides a schematic summary of the evidence for pathways mediating liver IR injury leading to kidney injury that will be discussed throughout this review.

## RENAL INJURY IS DIRECTLY LINKED TO LIVER IR INJURY AND OCCURS EARLY FOLLOWING LIVER REPERFUSION

The link between liver IR injury and AKI in liver transplantation has been well established in multiple analyses. A retrospective study of 116 patients undergoing





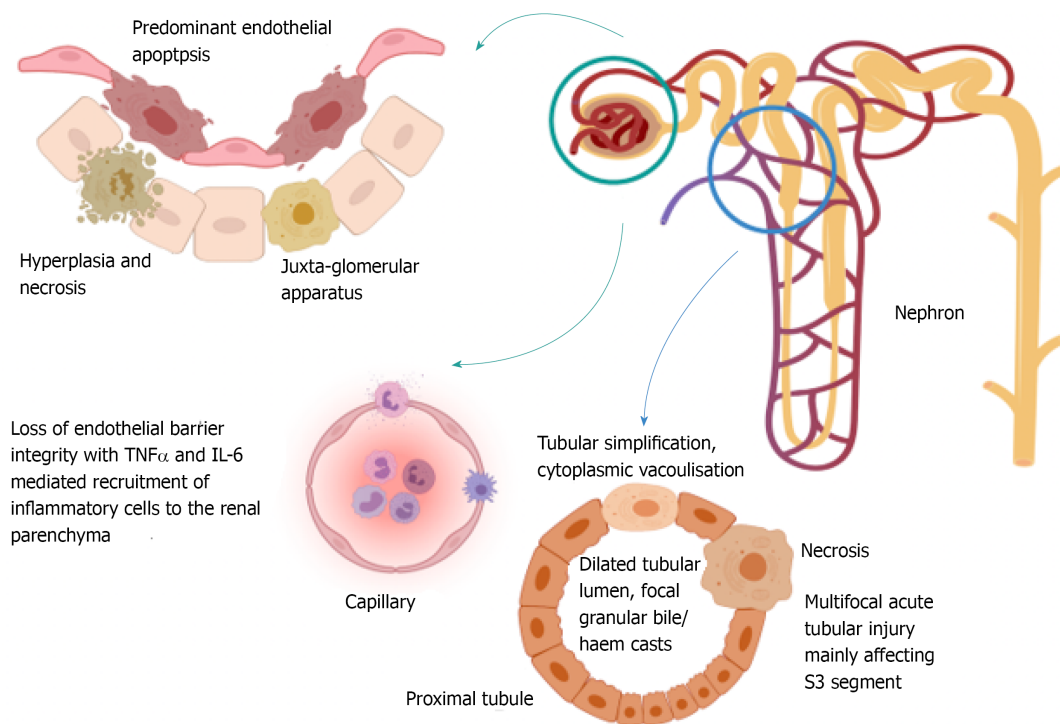
**Figure 1** Schematic representation of current evidence to support the mechanistic link between liver IR injury and resultant kidney injury. The evidence for the possible mediators of injury detailed in this diagram will be discussed in more detail in the text of this review. A summary of the major studies discussed in this review can also be found in [Supplementary Table 1](#).

deceased donor liver transplant in our unit identified post transplant serum AST/ALT as the only independent predictor of early post-operative AKI[8], a finding also demonstrated by Jochmans *et al*[9] in their prospective analysis of 88 patients who received livers from donation after brainstem death donors. These clinical data are supported by findings from rodent models of liver IR injury, typified by Lee *et al*[22], who demonstrated a direct relationship between plasma ALT and severity of AKI at 4 h and 24 h in a mouse model of partial hepatic ischaemia (right lobe of liver spared).

Renal injury is not only linked to liver ischaemia injury, but occurs promptly after reperfusion, both in the clinical setting and in animal models. In human liver transplantation, Neutrophil Gelatinase Associated Lipocalin (NGAL), a biomarker of early renal injury, is elevated in urine as early as two hours post reperfusion[23].

In rodent models of liver IR injury, histologically demonstrable renal injury is evident two to four hours post liver reperfusion[24]. Key histological features of renal injury in this context include hyperplasia and necrosis of the juxta-glomerular apparatus, endothelial apoptosis and multifocal acute tubular injury with disruption of F-actin cytoskeletal architecture, leading to S3 segment proximal tubule necrosis, focal tubular simplification (loss of brush border with cellular flattening), cytoplasmic vacuolisation, dilated tubular lumina and focal granular bile/haem casts[22,25,26], as depicted in [Figure 2](#). A standardised grading system for severity of renal injury in rodent models of liver IR injury and AKI, including stratification of histological findings that are more associated with severe AKI, has not yet been developed. Additionally, both the sequence of injury and time frame for improvement in histological changes has not been fully defined.

The development of renal injury within a few hours of liver IR injury in both human clinical and animal experimental data hints at direct transmission of injury from liver to kidney. Liver derived molecules, washed out of the liver during organ reperfusion, may be critical mediators of AKI in this context. As the first cells to encounter haematologically transmitted mediators of injury, endothelial cells might be expected to bear the initial brunt of injury. In rodent models of liver IR injury and AKI, renal endothelial injury predominates[25], supporting this hypothesis. Human histological data is sparse and so we await verification that the rodent pattern of renal injury occurs in the human setting. An *in vitro* human model that permitted demonstration of haematological transmission of liver IR injury to the kidney would also be of huge experimental benefit. This has yet to be developed.



**Figure 2** Diagrammatic representation of the current understanding of histological changes within the kidney that accompany acute kidney injury following liver ischaemia reperfusion injury. These data are obtained from animal studies. To date no objective grading system for histological severity of injury has been developed which means that only limited comparison of injury severity between studies is possible. Development of an objective scoring system across the first 48 h of renal injury would be of great benefit in this field of research.

## SETTING THE STAGE FOR RENAL INJURY POST LIVER IR INJURY: PRE-OPERATIVE AND INTRA-OPERATIVE PROMOTERS OF INJURY

Whilst molecular mediators released by the liver following IR injury are likely to play a key role in renal injury, evidence suggests that renal injury following liver IR injury is a two-hit phenomenon. Both pre-existing renal abnormalities and intra-operative fluctuations in arterial oxygen concentrations may render the kidney relatively chronically hypoxic and prime it for further damage by circulating mediators of reperfusion injury[27,28]. This seems to be a different phenomenon from controlled ischaemic pre-conditioning which appears to reduce liver and renal injury in a mouse model of liver IR (unpublished data).

### ***Background liver cirrhosis is associated with chronic renal injury and poor renal perfusion which may predispose the kidney to further injury***

Renal biopsies performed in the context of cirrhosis demonstrate pathological changes in the kidney, mainly centred around the glomerulus, in 70% of patients. These include mesangial expansion, thickening of capillary walls, a mild increase in the number and size of endothelial and epithelial cells and IgA deposition[28]. These changes may reflect the chronic release of pro-inflammatory mediators from ongoing chronic inflammation in the liver.

Cirrhosis also reduces systemic vascular resistance[28]. When the increased cardiac output can no longer compensate for the reduction in systemic resistance there is arterial hypoperfusion. This leads to activation of vasoconstrictor systems, including the sympathetic nervous system and the renin: Angiotensin: Aldosterone axis with hypersecretion of Anti-Diuretic Hormone. The net result is  $\text{Na}^+$  and water retention but with hypovolaemia, renal arterial hypoperfusion and renal vasoconstriction leading to renal failure[28]. This pre-existing inflammatory and hypoxic injury may prime the kidney for further injury during liver transplantation.

### ***There may be intra-operative fluctuations in renal perfusion during liver transplantation leading to a primary kidney insult before liver IR injury***

Liver transplantation results in huge fluctuations in mean arterial pressure (MAP) but there is conflicting evidence for an association between MAP and AKI. In a

retrospective study of patients undergoing living donor liver transplantation, severe hypotension (MAP < 40) in the recipient for even less than 10 min was independently related to development of post-operative AKI[29]. In a rat model of liver transplantation with doppler assessment of renal artery flow, Kong *et al*[24] noted increased renal resistive index (RI) during the anhepatic phase and reduced renal RI (compared to background) immediately post reperfusion (although this normalised within 30 min). The findings indicate maldistribution of blood flow to the kidney during the anhepatic phase with increased renal vein pressure secondary to IVC clamping serving to increase renal RI and reduce renal perfusion. Reperfusion is associated with reduced renal arteriolar tone, which the authors suggest may be due to an imbalance between vasoconstrictive and vasodilative factors, disturbing the adaptive capacity of the renal vasculature (not measured in this study). RI did not correlate with the development of AKI at 30 min and 2 h post operatively with this animal model and so RI and renal perfusion may not be the most important factors influencing AKI development.

Kandil *et al*[30] demonstrated similar fluctuations in MAP between the anhepatic and post reperfusion phases of human liver transplantation, although these were not statistically evaluated. In this double-blinded trial, patients were randomised to intra- and post-operative terlipressin infusion or placebo. Terlipressin induces systemic arterial vasoconstriction with renal sparing. It was hypothesised that systemic vascular resistance support with terlipressin would improve renal perfusion and reduce post-operative renal injury. However, the authors demonstrated equivalent incidence of AKI in both the terlipressin and placebo groups which was subsequently supported by evidence from a meta-analysis on the subject[31]. Other causes of fluctuating MAP that may contribute to renal hypoperfusion in addition to systemic vascular resistance were not evaluated in this study.

Thus, whilst a short period of significant hypotension may promote the development of post-operative AKI, the relationship between renal perfusion and subsequent development of AKI requires further investigation and so far evidence suggests that renal perfusion may be less important than circulating factors for the development of AKI following liver IR injury.

### ***Renal hypoxia in liver transplantation may promote development of liver IR induced AKI***

In human liver transplantation, low arterial oxygen concentration at 5 min post reperfusion is independently associated with development of AKI (this study included assessment of hypotension)[32]. Arterial hypoxia may result in renal hypoxia, causing primary renal injury. However, only absolute oxygen concentrations rather than relative changes were evaluated in this study. It may be that the relative drop in arterial oxygen concentration at reperfusion reflects the degree of ischaemia and oxygen debt within the donor graft, with higher oxygen tension gradients between the recipient vasculature and more profoundly ischaemic grafts (although this has not yet been evaluated experimentally). Post reperfusion arterial hypoxiaemia may therefore be a surrogate measure of liver IR injury, rather than arterial hypoxia providing a direct contribution to renal injury.

That said, the kidney is highly susceptible to hypoxic injury. Under normal physiological conditions, 80% of the renal oxygen requirement is used to drive the Na<sup>+</sup>/K<sup>+</sup>/ATPase pump in the proximal tubule. To meet these demands, the kidney is rich in vascular endothelium and has an excellent blood supply[27]. This in turn may make the kidney particularly vulnerable to circulating cytokines which trigger endothelial injury, especially in the situation of mass dilation of capillary beds as can occur during reperfusion secondary to the imbalance of vasodilatory and vasoconstrictive factors discussed in section 1[24].

Put together, the data suggest that the kidney is vulnerable to hypoxic injury and that post reperfusion arterial hypoxia is linked to the severity of renal injury following liver IR injury. Clinically it would be difficult to tease out the relative contributions to AKI from primary renal hypoxia and the more severe liver IR injury that is suggested by arterial hypoxia. Use of in vitro human models of injury where renal hypoxia can be controlled independently of liver IR injury would help to resolve this question. Such models have not yet been reported in the literature.



## WHAT ARE THE MOLECULAR MEDIATORS OF RENAL INJURY FOLLOWING LIVER IR INJURY?

Many inflammatory mediators have been implicated in liver IR injury and/or resultant AKI. The discussion below will focus on the major molecules (both injurious and protective) of current investigative interest and draw together the discussion in the literature to provide an overview of current understanding.

### ***Reactive oxygen species may be critical in the early transmission of injury to the kidney following liver IR injury***

Reactive oxygen species may originate from the liver and circulate to the kidney[33] or arise primarily in the kidney, where they may be generated following endothelial injury and poor capillary perfusion with resultant relative hypoxia. Hydrogen peroxide (H<sub>2</sub>O<sub>2</sub>), superoxide anion and hydroxyl radical have all been implicated in this process[34]. Oxidative stress is thought to be the main mediator of primary tissue damage during the first four hours of reperfusion. In a rat model of liver transplantation, oxidative stress in the kidney was shown to increase roughly 2.5 fold and peak at 8 h post reperfusion (measured as H<sub>2</sub>O<sub>2</sub> normalised to sham laparotomy) [35,36]. Reactive oxygen species (ROS) bind to critical cellular biomolecules including proteins, DNA and membrane lipids, and cause oxidative modification, with resultant tissue injury[37].

The detrimental action of ROS may be potentiated by ongoing release of ROS from infiltrating inflammatory cells in the later phase of liver reperfusion injury. Activated neutrophils and macrophages release ROS, including superoxide anions and hydroxyl radicals which promote cell death[33]. However, in the longer term ROS may also be regenerative; late neutrophil release of ROS may play a key role in the development of reparative macrophages to orchestrate liver tissue repair following liver injury[38].

Albumin, which acts as a free radical scavenger and endothelium stabiliser is protective in this clinical context; low circulating levels of albumin as found in advanced liver disease are associated with an increased incidence of AKI post liver transplantation[39]. Likewise, administration of various antioxidants and free radical scavengers have been shown to reduce markers of renal oxidative stress and attenuate injury post liver IR in different animal models[40,41]. Iron free radicals may play an important role in the generation of ROS and ferroptosis[42]. Desferrioxamine (DFO), the iron chelator, blocks oxygen free radical production and lipid peroxidation. Administration of DFO was found to attenuate liver IR injury in pigs and was associated with no or subtle tubular injury. Pigs exposed to liver IR injury without DFO demonstrated extensive necrosis of tubular epithelial cells and dilatation of tubular lumina, indicating severe renal injury[43]. Notably the circulating serum iron concentration was not different between DFO-treated animals and controls, implying a specific function of DFO with reactive iron species. It is not known whether this function is separate from the iron binding capacity of DFO.

These findings have not been successfully translated to the clinical setting. Administration of N-acetylcysteine during major liver surgery, including transplantation, is associated with a modest improvement in transaminase levels without impacting either AKI, graft or patient survival[44-46]. Thus whilst ROS are likely to be critical in the early mediation of AKI following liver IR injury, further work is required to identify clinically useful targets that will downregulate injury following liver transplantation and hepatic resection.

### ***Mitochondria are vulnerable to injury and may be the main site of ROS production following liver IR injury***

Mitochondria are believed to play a key role in the pathogenesis of renal injury following a variety of insults, with reduced biogenesis (generation of new mitochondria in response to increased energy demand, mitochondrial stress or damage) resulting in attenuated capacity to meet the energy demand and ATP production necessary for injured cells. Mitochondria are also the key site of ROS generation within the cell[35] and ironically mitochondrial injury may also be mediated by ROS[47] or iron species, with DFO demonstrated to attenuate mitochondrial injury in other settings[48]. In a rat model of liver transplantation and AKI, Liu *et al*[49] demonstrated a reduction in key proteins (and mRNA) involved in or regulating mitochondrial biogenesis, fission and fusion including AS-B, ND3, PGC-1 $\alpha$ , Tfam, Drp-1 and Fis-1. Mediators of mitophagy and autophagy (PINK-1 and LC3) were also upregulated with AKI in this model. Stimulation of mitochondrial

biogenesis has also been demonstrated to reduce renal IR injury[50,51].

Taken together, the data on ROS suggest local involvement in the pathogenesis of both liver IR injury and subsequent renal injury, with mitochondrial involvement in both the generation of ROS and mediation of ROS effects. However, demonstration of direct haematological transmission of ROS from liver to kidney producing subsequent kidney injury has not been demonstrated.

### ***Hypoxia Inducible Factors may be protective following liver IR injury***

Hypoxia inducible factor 1 (HIF-1) is an important mediator of the cellular transcriptional response to hypoxia and plays a key role in the response to liver IR injury. HIF-1 comprises an oxygen destructible alpha subunit and an oxygen-indestructible beta subunit, which dimerise under hypoxic conditions.

HIF-1 $\alpha$  silencing pre-injury promotes cellular damage in response to hypoxia, leading to increased serum levels of glucose, lipids, ALT and AST[52]. Conversely, pre-injury activation of HIF-1 $\alpha$  attenuates hepatic IR injury by attenuating liver necrosis, the inflammatory response, oxidative stress and apoptosis[53]. HIF-1 $\alpha$  stability is partially mediated by the oxygen sensing prolyl hydroxylase domain 1 (PHD1), which under normoxic conditions tags HIF-1 $\alpha$  for proteosomal degradation. Interestingly PHD1 function is repressed by miR122, a target gene of HIF-1 $\alpha$ , which is almost exclusively expressed in hepatocytes[54]. By this mechanism, HIF-1 $\alpha$  enhances HIF mediated cellular responses through PHD1 repression.

Downstream actions of HIF-1 may be key in the attenuation of liver IR injury with subsequent downregulation of AKI but the exact involvement and mechanisms remain unclear. It may be that such effects are mediated by other microRNAs involved in the transcriptional response to HIF-1[54]. The concentration of microRNAs from donor liver perfusate (but not tissue) at the end of cold ischaemia has been linked to elevated AST and graft long term survival[56]. If present in perfusate, these microRNAs may be produced by damaged liver cells that are being flushed out of the liver. The role of such microRNAs in the mediation of kidney injury requires further investigation.

---

## **CYTOKINES**

---

### ***Cytokines released from the liver following IR injury***

A multitude of cytokines are upregulated in response to liver IR injury. Bezinover *et al* [57] evaluated cytokine upregulation in response to the ischaemia and reperfusion phases of human liver IR injury in 11 extended criteria donor grafts and 6 standard criteria donor grafts for liver transplantation. They obtained samples from the portal vein (prior to reperfusion, thought to represent the ischaemic phase of IR injury), the hepatic veins (at the beginning and end of post implantation liver flush with recipient circulating blood, thought to represent the reperfusion phase of IR injury) and arterial samples (from recipient prior to reperfusion and at 10 min and 20 min post reperfusion). Samples were analysed for TNF, IL-1, IL-2, IL-6 and IL-8 with comparison between levels of individual cytokines at each location. The results suggest early hepatic release of IL-6 during the ischaemic phase. This is followed by TNF $\alpha$  release (without observed increase in systemic circulating TNF $\alpha$ ). IL-2 was likewise released from the liver towards the end of reperfusion. IL-1 was released from the liver during the process of reperfusion, without elevated levels seen in systemic samples. IL-8 and TNF are both known to be released by various cells including activated Kupffer cells in response to IR injury[58,59]. IL-8 is chemotactic, leading to recruitment of neutrophils to injured tissues[59], whilst TNF $\alpha$  is important for cell signalling leading to apoptosis or necrosis and neutrophil recruitment[60]. Interestingly, no difference was noted in IL-8 and TNF $\alpha$  release from standard and extended criteria groups. This is significant; given that extended criteria grafts are strongly associated with IR injury[21], higher concentrations of IL-8 and TNF $\alpha$  would be expected from this cohort. Thus release of IL-8 and TNF $\alpha$  may be associated with, but potentially not mechanistic to, IR injury and AKI development.

To summarise, in contrast to most published studies which focus on animal models, Bezinover *et al*[57] attempted to provide real-time human data on liver IR injury and hinted at possible temporal relationships between different cytokines in this context including IL-6, TNF $\alpha$ , IL-2 and IL-1. However, the study made significant assumptions, with no independent experimental validation of their methodology which matched sampling from different liver sites to the various phases of IR injury (for example portal vein sampling was matched to pre-reperfusion phase of injury). Such assumptions may explain the lack of expected difference in cytokine levels

between standard and extended criteria grafts. Additionally, the short period of reperfusion may explain the lack of correlation between liver flush samples and systemic samples. The “reperfusion phase” was only 20 min and therefore further changes within the liver during reperfusion injury may well have been missed in this data. Data from systemic blood samples over a longer time phase would have been interesting in this context.

A pilot study evaluating pre-conditioning in human liver transplantation performed in our unit investigated circulating cytokines at two hours post reperfusion. Levels of IL-6, IL-8, IL-10 and IL-17 $\alpha$  were all significantly elevated, whilst plasma levels of IL-2, IFN $\gamma$  and TNF $\alpha$  did not change during the peri-transplant period[61]. In addition, IL-10 was particularly associated with marginal grafts in this study, although small patient numbers mean that these data are not conclusive.

In a mouse model of 90 min partial hepatic IR injury (right lobe spared), Lee *et al*[62] demonstrated elevated serum IL-6, TNF $\alpha$  and MCP-1 at 6 h. These findings tallied with those from a previous study by the same authors that identified hepatic mRNA upregulation of TNF $\alpha$ , Intracellular Adhesion Molecule 1 (ICAM-1), Keratinocyte-derived Chemokine (KC), Monocyte Chemoattractant protein-1 (MCP-1) and Macrophage Inflammatory Protein-2 (MIP-2) following 60 min partial liver ischaemia [22]. This pattern of upregulation and protein expression is supported by other animal studies of hepatic IR injury[26].

In summary, investigation of liver cytokine release following IR injury has identified numerous molecules that may be present in serum and are capable of transmitting injury to the kidney. However, results between studies are conflicting and there is no clear evidence that the cytokines are responsible for AKI in this context. Further clinical studies that make use of targeted cytokine inhibition or specific rodent knockout models are required to link individual cytokines with AKI. Clarifying liver origin of the cytokine would also be important in establishing the pathway of injury. Additionally, single cell analysis of key liver cells in response to injury might help to identify new mediators of injury that have not been investigated to date.

### ***Cytokines are primarily released from non-parenchymal cells in early liver IR injury***

Non parenchymal cells (*i.e.*, non-hepatocytes) seem to be key in the mediation of early liver IR injury[63]. Sinusoidal endothelial cells are damaged during ischaemia, whilst Kupffer cells appear to be activated in response to reperfusion injury, demonstrating five times the TNF $\alpha$  production of control animals[64] in addition to IL-1 and superoxide anions[63]. TNF $\alpha$  production in Kupffer cells may be primarily driven by ROS[65]. In a rat model of liver transplantation, ischaemia-reperfusion preconditioned livers demonstrated a reduction in Kupffer cell superoxide formation, reduced TNF production and reduced non-parenchymal cell death leading to improved recipient survival[66], again suggesting that Kupffer cells are key in the mediation of injury. Acute liver graft failure has been linked to loss of viability of sinusoidal cells and activation of Kupffer cells, further demonstrating the importance of these cell types in the mediation of IR injury[64].

The late phase of liver reperfusion injury is categorised by infiltration of neutrophils, T lymphocytes and monocytes[67-69]. These cells are recruited to the liver parenchyma by upregulation of ICAM-1, VCAM-1 and MCP-1 on damaged hepatocytes and SECs. The infiltrating cells secrete matrix metalloproteinases, other proteases and ROS which cause further liver damage[68,70].

In summary, activation of non-parenchymal cells in the liver is fundamental for the early stages of IR injury. Inflammatory cells are recruited to the liver parenchyma by damaged hepatocytes and SECs and drive ongoing inflammation. Single cell analysis of non-parenchymal cells following liver IR injury may identify key transmitters of renal injury and clarify existing data.

### ***The key cytokine culprits implicated in the mediation of renal injury***

Many cytokines have been proposed as mediators of kidney injury following hepatic IR injury. Pulitano *et al*[71] performed molecular profiling of liver biopsies in 65 patients undergoing full size liver graft transplantation. Wedge biopsies were taken from the liver following graft preservation and 90 min after reperfusion in addition to serum samples preoperatively, 30 min after liver reperfusion and on post-operative days 1, 2, 5 and 7. 32% of recipients developed AKI. The authors demonstrated mRNA upregulation in 23 vasoactive, inflammatory, adhesion molecule, apoptosis inducing and oxidation genes (including ET-1, TNF $\alpha$ , IL-6, IL-18 and ICAM-1). Upregulation of the gene was correlated with serum expression of the protein for ET-1, TNF $\alpha$ , IL-6, IL-18 and RANTES 30 min post liver reperfusion and on post-operative days 1, 2, 5 and 7. Of the studied cytokines, only serum levels of Endothelin-1 (ET-1) and IL-18 were

independently associated with AKI development at post-operative day 1, suggesting a key role for ET-1 and IL-18 in the mediation of injury. Interestingly serum ET-1 also correlated with use of inotropes in donors and hepatic steatosis, both risk factors for liver IR injury, and so alternatively, ET-1 may be a surrogate marker for renal injury (which is related to severity of liver IR injury). Renal biopsies to evaluate local gene expression were not performed in this study and so the relationship between gene induction in the liver and effector genes for injury in the kidney cannot be established. Additionally, this study provides a limited look at 23 known mediators of inflammatory injury. Single cell analysis in this context would provide a more precise look at gene upregulation and potentially provide new targets for investigation.

At best, Pulitano *et al*[71] provides evidence for associations between liver mRNA upregulation, circulating IL-18 and ET-1 and kidney injury. However, causality is not established by these data and alternative explanations exist for the findings.

### ***IL-18 may potentiate renal injury following liver IR injury with IL-18BP providing a protective effect***

The IL-18-precursor is constitutively present in nearly all cells, where its activity is balanced by the high affinity IL-18 binding protein (IL-18BP). In its active form IL-18 is mostly secreted by macrophages, including Kupffer cells, although some disease processes lead to an imbalance of IL-18/IL-18BP with the liberation of free IL18 from other cell types. IL-18 is known to be an inducer of inflammatory cytokines[72]. Gonul *et al*[33] investigated the role of IL18 in renal injury post liver IR injury using a rat model of hepatic IR (clamping of portal triad for 1 hour followed by 4 h reperfusion) with administration of intraperitoneal IL-18BP 30 min before commencing the laparotomy for liver IR injury. There was no difference in liver IR injury (as measured by AST/ALT/LDH and histological damage) between the groups, but an almost 50% reduction in serum creatinine with administration of IL-18BP compared to controls. This was confirmed by a significant improvement in histological renal injury with a reduction in mononuclear cell infiltration, glomerular necrosis and tubular epithelial necrosis suggesting that IL-18BP does not modify the primary liver IR injury but is involved in the pathway for secondary renal injury. Findings in this study contrasted to a previous study by the same authors which demonstrated improvement in both liver-IR and renal injury with peritoneal administration of IL-18BP[72]. The authors attribute this difference to the higher dose of IL-18BP used in the first study (100µg versus 50µg in this study). This explanation is in keeping with an overall hypothesis of high IL-18 release in response to liver injury and subsequent haematological washout impacting secondary organs. Of note, both studies used human IL-18BP, which has limited homology with rat IL-18BP. This represents a fundamental flaw, and the studies would be better repeated with rat IL-18BP.

Overall IL-18 may be critical in the mediation of renal injury following liver IR injury. However, these data require validation with rat IL-18BP in the animal model, and successful translation of findings to the human setting.

### ***ET-1 may contribute to renal injury post liver IR injury***

In addition to the evidence regarding ET-1 provided above, circulating ET-1 has been demonstrated to correlate with both early reduction in GFR and long-term renal dysfunction in patients with normal renal function who are undergoing first Orthotopic Liver Transplantation (OLT)[74]. Patients with liver disease have background high circulating ET-1, due to increased synthesis and reduced clearance [75]. ET-1 is also significantly elevated at the end of the anhepatic phase of liver transplantation in clinical studies[76], although it may be cleared within 30 min by a functioning liver graft. The significance of this is unclear. ET-1 may contribute to renal injury or be a surrogate marker for MELD score and severity of liver disease, which is independently associated with worse outcomes post liver transplantation[77].

ET-1 has been demonstrated to promote Na<sup>+</sup> retention and increase renal vascular resistance without a significant change in blood pressure in healthy volunteers[78]. This function of ET-1 appears contradictory to evidence presented earlier where a reduction in renal resistive index was seen with reperfusion[24] and may reflect differences between the rat model and human situation or differences between the healthy liver and background liver disease or a compensatory mechanism in response to chronically high ET-1. Additionally, evidence suggests that the oxidative status of the renal microvasculature can significantly influence renal microcirculatory responses to ET-1 which may account for different results in different experimental settings. The vasoactive functions of ET-1 in the kidney may be mediated by its action to increase superoxide accumulation in preglomerular smooth muscle cells. Apocynin (an



NADPH oxidase inhibitor) has been demonstrated to attenuate ET-1's ability to reduce renal blood flow[79].

### ***Cytokines recruit inflammatory cells to the kidney with potentiation of injury***

In addition to the role they play in the mediation of liver IR injury, IL-6 and TNF $\alpha$  are upregulated in the kidney in response to liver IR injury. TNF $\alpha$  triggers leukocyte-endothelium interactions and microcirculatory dysfunction and is known to impact renal microvascular oxygen distribution and promote organ damage[27]. It has also been demonstrated to promote migration of inflammatory cells into the renal parenchyma through upregulation of KC (rodent equivalent of IL-8), MCP-1 and MIP-2, with macrophage recruitment[25,33]. This is similar to the functions of TNF $\alpha$  seen in the liver following IR as in section "*Cytokines released from the liver following IR injury*".

Likewise, IL-6 is a major pro-inflammatory cytokine that stimulates release of neutrophils from bone marrow, prevents neutrophil apoptosis and activates neutrophils to produce toxic enzymes. Additionally, IL-6 activates endothelial cells to express adhesion molecules and produce chemokines[43] which promote the recruitment of inflammatory cells to the renal parenchyma. Activated neutrophils release oxygen free radicals, neutrophil elastase and products of arachidonic acid metabolism, further potentiating renal injury[25,80].

Thus both IL-6 and TNF $\alpha$  are believed to be key for the potentiation of renal injury following liver IR injury by recruitment of inflammatory cells as part of the systemic inflammatory response to injury. Further investigation is required to establish other potentiators of injury in this context.

---

## **POTENTIATION OF INJURY WITHIN THE KIDNEY: THERE IS CELL TO CELL SIGNALLING OF DAMAGE**

---

There is growing evidence for transmission of injury between cells in a variety of settings. Connexins are a big family of transmembrane proteins, expressed in all human organs and tissues, which form internal gap junctions between cells and manipulate small molecule (less than 1KDa), direct-transfer signalling[36]. Luo specifically investigated the role of Connexin-32 (Cx32), because this connexin is normally richly expressed in the kidney. Cx32 expression was found to increase following reperfusion in a rat model of liver transplantation, peaking in tandem with kidney damage and functional impairment at 8 h[36]. Treatment with 2-APB, a relatively specific inhibitor of Cx32 channels, reduced renal injury. This study only evaluated renal function and would have benefited from measurement of liver injury, both in response to IR and following addition of 2-ARB, to evaluate the specificity of the renal response.

Cx32 expression has been demonstrated to positively correlate to the degree of IR injury in liver biopsies from patients undergoing liver transplantation[81], but human evidence to support the role of Cx32 in subsequent kidney cell to cell transmission of injury is lacking. Such data is worth pursuing, along with supplementary evidence to further define cell to cell signalling in the kidney.

---

## **THE INJURED KIDNEY MAY MODULATE THE PROGRESSION OF LIVER IR INJURY**

---

Accumulating evidence suggests that in addition to liver IR injury mediation of renal injury, the kidney itself plays a key role in the potentiation or amelioration of liver injury.

There is demonstrable liver injury after ischaemic renal injury, with derangement of AST/ALT and evidence of hepatocyte apoptosis (*via* activation of NFB-receptor)[82, 83]. IL-10, IL-6 and TNF $\alpha$  are upregulated within the liver and multiple markers of oxidative stress have been identified following ischaemic AKI. It is not known whether this is related to systemic inflammation or targeted liver injury. Either way, the effect may be persistent; renal IR injury is associated with the development of hepatic steatosis in the longer term[80].

Human Heat Shock Protein 27 (HSP27) is a member of the chaperone protein family. These proteins are upregulated in response to a variety of cellular stresses. HSP27 is a key stabiliser of F-actin and a potent anti-apoptotic. In a genetically manipulated mouse model with demonstrated robust and widespread overexpression



of HSP27, Park *et al*[25] demonstrated attenuation of both partial liver IR injury (left and middle liver lobe inflow clamped), and secondary renal injury. The hepatic protection was primarily mediated by the kidneys as the liver injury was abolished by unilateral and bilateral nephrectomy. The findings of this study contrast with a previous study by the same group, where HSP27 overexpression provided primary protection against liver IR injury (significantly less necrosis and apoptosis at 2 h post reperfusion)[84]. In that study the HSP27 protection was thought to be mediated by Kupffer cells; depletion of Kupffer cells obliterated protection in HSP27 over-expressing mice but did not impact IR injury in wild type mice. Such results are not in keeping with the previously discussed, known roles of Kupffer cells in liver IR injury. One would expect obliteration of Kupffer cells in wild type mice to downregulate IR injury. Further investigation of these controversies is required but these studies hint that it might be possible to “switch off” liver IR injury and AKI, given the right therapeutic targets.

The sphingosine-1-phosphate (S1P)/S1P<sub>1</sub>-receptor interaction on endothelial cells is known to be critical in the maintenance of endothelial barrier integrity in the kidney. In a mouse model of hepatic IR injury, pre-treatment with S1P did not significantly attenuate liver injury (ALT/histology) at 6 h but provided marked attenuation at 24 h [62]. Renal injury was reduced at 6 h (TUNEL assay), with significantly improved endothelial integrity and reduced expression of CD44<sup>+</sup> cells (indicating a reduction in endothelial injury) compared to non S1P treated mice. Pre-treatment with the S1P<sub>1</sub> antagonist, VPC 23019, partially reversed the protection afforded by S1P.

Together these studies support the hypothesis that renal injury is both triggered by early liver IR injury and modulates ongoing liver IR injury. The mechanisms by which this occurs remain unknown but may involve the systemic inflammatory response to renal injury. Further work is required to determine the “switches” that decide whether renal modulation is pro- or anti-inflammatory and to harness these for therapeutic intervention.

---

## THERE MAY BE ADDITIONAL EXTRA-RENAL MODIFICATION OF LIVER IR AND RENAL INJURY

---

Some recent studies have focussed on the role of the intestinal immune system in primary renal injury leading to secondary liver injury. IL-17A released by Paneth cell degranulation in the small intestine in response to primary renal IR injury contributes to hepatic, renal and intestinal injury, with improvement in all three when IL-17A is depleted[85]. Contrastingly Paneth cell TLR-9 knockout mice demonstrate progression of hepatic, intestinal and renal injury in response to kidney IR injury[86]. These data are obtained from models of kidney IR injury and therefore do not directly relate to liver IR injury. However, future studies to investigate the role of Paneth cells in the mediation of renal and liver injury following IR insult to the liver may reveal similar intriguing findings and provide additional opportunities to modulate the potentiation of systemic and local response to injury.

---

## LIMITATIONS OF THE CURRENT LITERATURE

---

The studies discussed within this review present some interesting data related to the mechanisms of renal injury secondary to liver IR injury. However, a clear understanding of the pathways mediating the transmission of injury from liver to kidney and back again is not yet within our grasp. Investigative work in this field has relied heavily upon small rodent models. Rodent models often lack applicability to the human setting and clinical interventions that show promise in rodents often fail upon translation to the human setting[44,61,87]. Rodent populations used for experimental work are inbred animals with relatively limited genetic diversity and so cannot fully represent human populations with polymorphic genetic backgrounds[88]. Liver injury often occurs in patients who do not have background “normal” liver (including transplantation, ALF and ACLF). Background altered liver function may prime the immune and/or renal systems to injury, potentiating the effects of an acute insult. This is not accounted for in rodent models and may also impact the applicability of any results to the human setting.

A second limitation with all studies in this field is the difficulty associated with defining AKI clinically. Most studies included here rely upon serum creatinine (+/-

urea), with clinical studies applying the AKIN or KDIGO criteria. Both AKIN and KDIGO rely upon changes in serum creatinine or urine output. Serum creatinine is well known to be a relatively insensitive marker of renal injury. Patients with end-stage liver disease are often deplete in skeletal muscle and so have low circulating creatinine, which may mask underlying renal injury[89,90]. Changes in serum creatinine take time to reflect renal injury, often between 12 and 24 h. During this time, renal injury may be potentiated, with worse long-term outcomes.

A third limitation with studies in this field is the lack of an animal model that allows serial sampling to dynamically assess changes over time. Rodent models are too small to accommodate serial liver and kidney biopsies or blood samples. As demonstrated herein, renal injury and liver injury following liver IR is a dynamic and evolving process. Serial, *in vivo* sampling would be highly informative.

## FUTURE DIRECTIONS

Whilst the limitations of rodent models may be here to stay, improved diagnostic methodology for acute kidney injury may be provided by one, or a combination of biomarkers. NGAL shows great promise in this respect[91], and is already being used as an alternative to serum creatinine for the diagnosis of renal injury in some studies. In a study of liver transplant patients, we found that urinary NGAL measured at the time of abdominal closure accurately predicted post-operative AKI[23]. This has been confirmed by other studies[92,93]. The site of release and role of NGAL in liver IR injury leading to renal injury is not currently known. NGAL has multiple functions[94] including iron transport[95]. Speculatively, NGAL could “mop up” iron free radicals which contribute to injury in the context of liver IR and resultant renal injury. An interesting recent study identified that NGAL is co-localised with Arl13b to the primary cilium of human renal tubular epithelial cells in chronic allograft nephropathy [96]. KIM-1, another potential biomarker for renal injury[97] is also expressed on primary cilia[98]. The primary cilium is a key organelle and performs a variety of functions including mechano- and chemo-sensitisation[99]. In liver IR injury, primary cilia are shed into the urine and are demonstrable as early as 1 h post injury[98]. Whether NGAL is co-incidentally shed with cilia, or promotes shedding of cilia, awaits clarification.

## CONCLUSION

The mechanisms by which liver injury mediates renal injury require further clarification but it is likely that multiple circulating molecules are involved, including currently unidentified molecules. The kidney may be primed to injury by alterations in renal microcirculation with early endothelial and subsequent tubular injury. Renal injury in turn, may potentiate liver IR injury and this process may involve other organs with immune function, including the gut.

## REFERENCES

- 1 **Wu MY**, Yiang GT, Liao WT, Tsai AP, Cheng YL, Cheng PW, Li CY, Li CJ. Current Mechanistic Concepts in Ischemia and Reperfusion Injury. *Cell Physiol Biochem* 2018; **46**: 1650-1667 [PMID: 29694958 DOI: 10.1159/000489241]
- 2 **Adembri C**, de Gaudio AR, Novelli GP. Ischaemia-Reperfusion in Sepsis. In: Sepsis and Organ Dysfunction. 2000 [DOI: 10.1007/978-88-470-2284-3\_5]
- 3 **Dorweiler B**, Pruefer D, Andrasi TB, Maksan SM, Schmiedt W, Neufang A, Vahl CF. Ischemia-Reperfusion Injury : Pathophysiology and Clinical Implications. *Eur J Trauma Emerg Surg* 2007; **33**: 600-612 [PMID: 26815087 DOI: 10.1007/s00068-007-7152-z]
- 4 **Bar-Or D**, Carrick MM, Mains CW, Rael LT, Slone D, Brody EN. Sepsis, oxidative stress, and hypoxia: Are there clues to better treatment? *Redox Rep* 2015; **20**: 193-197 [PMID: 25803628 DOI: 10.1179/1351000215Y.0000000005]
- 5 **Weigand K**, Brost S, Steinebrunner N, Büchler M, Schemmer P, Müller M. Ischemia/Reperfusion injury in liver surgery and transplantation: pathophysiology. *HPB Surg* 2012; **2012**: 176723 [PMID: 22693364 DOI: 10.1155/2012/176723]
- 6 **Ito T**, Naini BV, Markovic D, Aziz A, Younan S, Lu M, Hirao H, Kadono K, Kojima H, DiNocchia J 3rd, Agopian VG, Yersiz H, Farmer DG, Busuttil RW, Kupiec-Weglinski JW, Kaldas FM. Ischemia-reperfusion injury and its relationship with early allograft dysfunction in liver transplant patients. *Am*

- J Transplant* 2021; **21**: 614-625 [PMID: [32713098](#) DOI: [10.1111/ajt.16219](#)]
- 7 **Gazia C**, Lenci I, Manzia TM, Martina M, Tisone G, Angelico R, Abenavoli L, Grassi G, Signorello A, Baiocchi L. Current Strategies to Minimize Ischemia-Reperfusion Injury in Liver Transplantation: A Systematic Review. *Rev Recent Clin Trials* 2021 [PMID: [34376136](#) DOI: [10.2174/1574887116666210729112932](#)]
  - 8 **Rahman S**, Davidson BR, Mallett SV. Early acute kidney injury after liver transplantation: Predisposing factors and clinical implications. *World J Hepatol* 2017; **9**: 823-832 [PMID: [28706581](#) DOI: [10.4254/wjh.v9.i18.823](#)]
  - 9 **Jochmans I**, Meurisse N, Neyrinck A, Verhaegen M, Monbaliu D, Pirenne J. Hepatic ischemia/reperfusion injury associates with acute kidney injury in liver transplantation: Prospective cohort study. *Liver Transpl* 2017; **23**: 634-644 [PMID: [28124458](#) DOI: [10.1002/lt.24728](#)]
  - 10 **Thongprayoon C**, Kaewput W, Thamcharoen N, Bathini T, Wathanasuntorn K, Lertjitbanjong P, Sharma K, Salim SA, Ungprasert P, Wijarnpreecha K, Kröner PT, Aeddula NR, Mao MA, Cheungpasitporn W. Incidence and Impact of Acute Kidney Injury after Liver Transplantation: A Meta-Analysis. *J Clin Med* 2019; **8** [PMID: [30884912](#) DOI: [10.3390/jcm8030372](#)]
  - 11 **Durand F**, Francoz C, Asrani SK, Khemichian S, Pham TA, Sung RS, Genyk YS, Nadim MK. Acute Kidney Injury After Liver Transplantation. *Transplantation* 2018; **102**: 1636-1649 [PMID: [29847502](#) DOI: [10.1097/TP.0000000000002305](#)]
  - 12 **Moore JK**, Love E, Craig DG, Hayes PC, Simpson KJ. Acute kidney injury in acute liver failure: a review. *Expert Rev Gastroenterol Hepatol* 2013; **7**: 701-712 [PMID: [24134153](#) DOI: [10.1586/17474124.2013.837264](#)]
  - 13 **Rognant N**. Acute kidney injury in patients with chronic liver disease. *World J Hepatol* 2015; **7**: 993-1000 [PMID: [25954481](#) DOI: [10.4254/wjh.v7.i7.993](#)]
  - 14 **Cabezuelo JB**, Ramírez P, Ríos A, Acosta F, Torres D, Sansano T, Pons JA, Bru M, Montoya M, Bueno FS, Robles R, Parrilla P. Risk factors of acute renal failure after liver transplantation. *Kidney Int* 2006; **69**: 1073-1080 [PMID: [16528257](#) DOI: [10.1038/sj.ki.5000216](#)]
  - 15 **Doi K**, Rabb H. Impact of acute kidney injury on distant organ function: recent findings and potential therapeutic targets. *Kidney Int* 2016; **89**: 555-564 [PMID: [26880452](#) DOI: [10.1016/j.kint.2015.11.019](#)]
  - 16 **Lane K**, Dixon JJ, MacPhee IA, Philips BJ. Renohepatic crosstalk: does acute kidney injury cause liver dysfunction? *Nephrol Dial Transplant* 2013; **28**: 1634-1647 [PMID: [23685679](#) DOI: [10.1093/ndt/gft091](#)]
  - 17 **Mahmud N**. Selection for Liver Transplantation: Indications and Evaluation. *Curr Hepatol Rep* 2020; 1-10 [PMID: [32837824](#) DOI: [10.1007/s11901-020-00527-9](#)]
  - 18 **Line PD**, Dueland S. Liver transplantation for secondary liver tumours: The difficult balance between survival and recurrence. *J Hepatol* 2020; **73**: 1557-1562 [PMID: [32896581](#) DOI: [10.1016/j.jhep.2020.08.015](#)]
  - 19 **Leithead JA**, Rajoriya N, Gunson BK, Muiesan P, Ferguson JW. The evolving use of higher risk grafts is associated with an increased incidence of acute kidney injury after liver transplantation. *J Hepatol* 2014; **60**: 1180-1186 [PMID: [24631601](#) DOI: [10.1016/j.jhep.2014.02.019](#)]
  - 20 **Leithead JA**, Armstrong MJ, Corbett C, Andrew M, Kothari C, Gunson BK, Muiesan P, Ferguson JW. Hepatic ischemia reperfusion injury is associated with acute kidney injury following donation after brain death liver transplantation. *Transpl Int* 2013; **26**: 1116-1125 [PMID: [24033747](#) DOI: [10.1111/tri.12175](#)]
  - 21 **Hashimoto K**, Miller C. The use of marginal grafts in liver transplantation. *J Hepatobiliary Pancreat Surg* 2008; **15**: 92-101 [PMID: [18392701](#) DOI: [10.1007/s00534-007-1300-z](#)]
  - 22 **Lee HT**, Park SW, Kim M, D'Agati VD. Acute kidney injury after hepatic ischemia and reperfusion injury in mice. *Lab Invest* 2009; **89**: 196-208 [PMID: [19079326](#) DOI: [10.1038/labinvest.2008.124](#)]
  - 23 **Robertson FP**, Yeung AC, Male V, Rahman S, Mallett S, Fuller BJ, Davidson BR. Urinary Neutrophil Gelatinase Associated Lipocalins (NGALs) predict acute kidney injury post liver transplant. *HPB (Oxford)* 2019; **21**: 473-481 [PMID: [30385051](#) DOI: [10.1016/j.hpb.2018.09.017](#)]
  - 24 **Kong HY**, Chen F, He Y, Wu LJ, Wang LQ, Zhu SM, Zheng SS. Intrarenal resistance index for the assessment of acute renal injury in a rat liver transplantation model. *BMC Nephrol* 2013; **14**: 55 [PMID: [23453043](#) DOI: [10.1186/1471-2369-14-55](#)]
  - 25 **Park SW**, Chen SW, Kim M, D'Agati VD, Lee HT. Human heat shock protein 27-overexpressing mice are protected against acute kidney injury after hepatic ischemia and reperfusion. *Am J Physiol Renal Physiol* 2009; **297**: F885-F894 [PMID: [19656912](#) DOI: [10.1152/ajprenal.00317.2009](#)]
  - 26 **Park SW**, Chen SW, Kim M, D'Agati VD, Lee HT. Selective intrarenal human A1 adenosine receptor overexpression reduces acute liver and kidney injury after hepatic ischemia reperfusion in mice. *Lab Invest* 2010; **90**: 476-495 [PMID: [20065944](#) DOI: [10.1038/labinvest.2009.143](#)]
  - 27 **Le Dorze M**, Legrand M, Payen D, Ince C. The role of the microcirculation in acute kidney injury. *Curr Opin Crit Care* 2009; **15**: 503-508 [PMID: [19829106](#) DOI: [10.1097/MCC.0b013e328332f6cf](#)]
  - 28 **Umbro I**, Tinti F, Scalera I, Evison F, Gunson B, Sharif A, Ferguson J, Muiesan P, Mitterhofer AP. Acute kidney injury and post-reperfusion syndrome in liver transplantation. *World J Gastroenterol* 2016; **22**: 9314-9323 [PMID: [27895419](#) DOI: [10.3748/wjg.v22.i42.9314](#)]
  - 29 **Mizota T**, Hamada M, Matsukawa S, Seo H, Tanaka T, Segawa H. Relationship Between Intraoperative Hypotension and Acute Kidney Injury After Living Donor Liver Transplantation: A Retrospective Analysis. *J Cardiothorac Vasc Anesth* 2017; **31**: 582-589 [PMID: [28216198](#) DOI: [10.1053/j.jvca.2016.12.002](#)]

- 30 **Kandil MA**, Abouelenain KM, Alsebaey A, Rashed HS, Afifi MH, Mahmoud MA, Yassen KA. Impact of terlipressin infusion during and after live donor liver transplantation on incidence of acute kidney injury and neutrophil gelatinase-associated lipocalin serum levels: A randomized controlled trial. *Clin Transplant* 2017; **31** [PMID: [28564127](#) DOI: [10.1111/ctr.13019](#)]
- 31 **Won YJ**, Kim HJ, Lim BG, Ahn HS, Hwang MH, Lee IO. Effect of Perioperative Terlipressin on Postoperative Renal Function in Patients Who Have Undergone Living Donor Liver Transplantation: A Meta-Analysis of Randomized Controlled Trials. *Transplant Proc* 2015; **47**: 1917-1925 [PMID: [26293074](#) DOI: [10.1016/j.transproceed.2015.06.023](#)]
- 32 **Chae MS**, Lee N, Park DH, Lee J, Jung HS, Park CS, Choi JH, Hong SH. Influence of oxygen content immediately after graft reperfusion on occurrence of postoperative acute kidney injury in living donor liver transplantation. *Medicine (Baltimore)* 2017; **96**: e7626 [PMID: [28767577](#) DOI: [10.1097/MD.00000000000007626](#)]
- 33 **Gonul Y**, Ozsoy M, Kocak A, Ozkececi ZT, Karavelioglu A, Bozkurt MF, Cartilli O, Keles I, Kocak H, Celik S. Antioxidant, Antiapoptotic and Inflammatory Effects of Interleukin-18 Binding Protein on Kidney Damage Induced by Hepatic Ischemia Reperfusion. *Am J Med Sci* 2016; **351**: 607-615 [PMID: [27238925](#) DOI: [10.1016/j.amjms.2016.02.017](#)]
- 34 **Zhang W**, Wang M, Xie HY, Zhou L, Meng XQ, Shi J, Zheng S. Role of reactive oxygen species in mediating hepatic ischemia-reperfusion injury and its therapeutic applications in liver transplantation. *Transplant Proc* 2007; **39**: 1332-1337 [PMID: [17580134](#) DOI: [10.1016/j.transproceed.2006.11.021](#)]
- 35 **Kadkhodae M**, Mikaeili S, Zahmatkesh M, Golab F, Seifi B, Arab HA, Shams S, Mahdavi-Mazdeh M. Alteration of renal functional, oxidative stress and inflammatory indices following hepatic ischemia-reperfusion. *Gen Physiol Biophys* 2012; **31**: 195-202 [PMID: [22781823](#) DOI: [10.4149/gpb\\_2012\\_024](#)]
- 36 **Luo C**, Yuan D, Li X, Yao W, Luo G, Chi X, Li H, Irwin MG, Xia Z, Hei Z. Propofol attenuated acute kidney injury after orthotopic liver transplantation via inhibiting gap junction composed of connexin 32. *Anesthesiology* 2015; **122**: 72-86 [PMID: [25254904](#) DOI: [10.1097/ALN.0000000000000448](#)]
- 37 **Salama SA**, Kabel AM. Taxifolin ameliorates iron overload-induced hepatocellular injury: Modulating PI3K/AKT and p38 MAPK signaling, inflammatory response, and hepatocellular regeneration. *Chem Biol Interact* 2020; **330**: 109230 [PMID: [32828744](#) DOI: [10.1016/j.cbi.2020.109230](#)]
- 38 **Quirk SM**, Hilbert JL, Fortune JE. Progesterone secretion by granulosa cells from rats with four- or five-day estrous cycles: the development of responses to follicle-stimulating hormone, luteinizing hormone, and testosterone. *Endocrinology* 1986; **118**: 2402-2410 [PMID: [3084218](#) DOI: [10.1038/s41467-019-09046-8](#)]
- 39 **Sang BH**, Bang JY, Song JG, Hwang GS. Hypoalbuminemia Within Two Postoperative Days Is an Independent Risk Factor for Acute Kidney Injury Following Living Donor Liver Transplantation: A Propensity Score Analysis of 998 Consecutive Patients. *Crit Care Med* 2015; **43**: 2552-2561 [PMID: [26308436](#) DOI: [10.1097/CCM.0000000000001279](#)]
- 40 **Lasheen NN**, Elayat WM, Elrefai MFM, Zaki WS, Ahmed EH, El Sheikh RMN, Abo Rayas DSA, Gad FRS. Possible role of garlic oil in ameliorating renal injury after liver ischemia/reperfusion in rats. *J Physiol Pharmacol* 2019; **70** [PMID: [32009629](#) DOI: [10.26402/jpp.2019.5.12](#)]
- 41 **Seifi B**, Kadkhodae M, Delavari F, Mikaeili S, Shams S, Ostad SN. Pretreatment with pentoxifylline and N-acetylcysteine in liver ischemia reperfusion-induced renal injury. *Ren Fail* 2012; **34**: 610-615 [PMID: [22364443](#) DOI: [10.3109/0886022X.2012.660827](#)]
- 42 **Hu Z**, Zhang H, Yang SK, Wu X, He D, Cao K, Zhang W. Emerging Role of Ferroptosis in Acute Kidney Injury. *Oxid Med Cell Longev* 2019; **2019**: 8010614 [PMID: [31781351](#) DOI: [10.1155/2019/8010614](#)]
- 43 **Vlahakos D**, Arkadopoulos N, Kostopanagiotou G, Siasiakou S, Kaklamanis L, Degiannis D, Demonakou M, Smyrniotis V. Deferoxamine attenuates lipid peroxidation, blocks interleukin-6 production, ameliorates sepsis inflammatory response syndrome, and confers renoprotection after acute hepatic ischemia in pigs. *Artif Organs* 2012; **36**: 400-408 [PMID: [22187937](#) DOI: [10.1111/j.1525-1594.2011.01385.x](#)]
- 44 **Jegatheeswaran S**, Siriwardena AK. Experimental and clinical evidence for modification of hepatic ischaemia-reperfusion injury by N-acetylcysteine during major liver surgery. *HPB (Oxford)* 2011; **13**: 71-78 [PMID: [21241423](#) DOI: [10.1111/j.1477-2574.2010.00263.x](#)]
- 45 **Khan AW**, Fuller BJ, Shah SR, Davidson BR, Rolles K. A prospective randomized trial of N-acetyl cysteine administration during cold preservation of the donor liver for transplantation. *Ann Hepatol* 2005; **4**: 121-126 [PMID: [16010245](#) DOI: [10.1016/s1665-2681\(19\)32075-7](#)]
- 46 **Hilmi IA**, Peng Z, Planinsic RM, Damian D, Dai F, Tyurina YY, Kagan VE, Kellum JA. N-acetylcysteine does not prevent hepatorenal ischaemia-reperfusion injury in patients undergoing orthotopic liver transplantation. *Nephrol Dial Transplant* 2010; **25**: 2328-2333 [PMID: [20179007](#) DOI: [10.1093/ndt/gfq077](#)]
- 47 **Zorov DB**, Juhaszova M, Sollott SJ. Mitochondrial reactive oxygen species (ROS) and ROS-induced ROS release. *Physiol Rev* 2014; **94**: 909-950 [PMID: [24987008](#) DOI: [10.1152/physrev.00026.2013](#)]
- 48 **Chang HC**, Wu R, Shang M, Sato T, Chen C, Shapiro JS, Liu T, Thakur A, Sawicki KT, Prasad SV, Ardehali H. Reduction in mitochondrial iron alleviates cardiac damage during injury. *EMBO Mol Med* 2016; **8**: 247-267 [PMID: [26896449](#) DOI: [10.15252/emmm.201505748](#)]
- 49 **Liu Q**, Krishnasamy Y, Rehman H, Lemasters JJ, Schnellmann RG, Zhong Z. Disrupted Renal



- Mitochondrial Homeostasis after Liver Transplantation in Rats. *PLoS One* 2015; **10**: e0140906 [PMID: 26480480 DOI: 10.1371/journal.pone.0140906]
- 50 **Garrett SM**, Whitaker RM, Beeson CC, Schnellmann RG. Agonism of the 5-hydroxytryptamine 1F receptor promotes mitochondrial biogenesis and recovery from acute kidney injury. *J Pharmacol Exp Ther* 2014; **350**: 257-264 [PMID: 24849926 DOI: 10.1124/jpet.114.214700]
  - 51 **Jesinkey SR**, Funk JA, Stallons LJ, Wills LP, Megyesi JK, Beeson CC, Schnellmann RG. Formoterol restores mitochondrial and renal function after ischemia-reperfusion injury. *J Am Soc Nephrol* 2014; **25**: 1157-1162 [PMID: 24511124 DOI: 10.1681/ASN.2013090952]
  - 52 **Xie P**, Yang L, Talaiti A, Wu JJ, Yu J, Yu T, Wang HY, Huang B, Wu Q, Maimaitili Y, Wang J, Ma HP, Yang YN, Zheng H. Deferoxamine-activated hypoxia-inducible factor-1 restores cardioprotective effects of sevoflurane preconditioning in diabetic rats. *Acta Physiol (Oxf)* 2017; **221**: 98-114 [PMID: 28316125 DOI: 10.1111/apha.12874]
  - 53 **Zhang X**, Du P, Luo K, Li Y, Liu Z, Wang W, Zeng C, Ye Q, Xiao Q. Hypoxia-inducible factor-1 $\alpha$  protects the liver against ischemia-reperfusion injury by regulating the A2B adenosine receptor. *Bioengineered* 2021; **12**: 3737-3752 [PMID: 34288817 DOI: 10.1080/21655979.2021.1953217]
  - 54 **Ju C**, Wang M, Tak E, Kim B, Emontzpohl C, Yang Y, Yuan X, Kutay H, Liang Y, Hall DR, Dar WA, Bynon JS, Carmeliet P, Ghoshal K, Eltzschig HK. Hypoxia-inducible factor-1 $\alpha$ -dependent induction of miR122 enhances hepatic ischemia tolerance. *J Clin Invest* 2021; **131** [PMID: 33792566 DOI: 10.1172/JCI140300]
  - 55 **Selten JW**, Verhoeven CJ, Heedfeld V, Roest HP, de Jonge J, Pirenne J, van Pelt J, Ijzermans JNM, Monbaliu D, van der Laan LJW. The release of microRNA-122 during liver preservation is associated with early allograft dysfunction and graft survival after transplantation. *Liver Transpl* 2017; **23**: 946-956 [PMID: 28388830 DOI: 10.1002/lt.24766]
  - 56 **Verhoeven CJ**, Farid WRR, de Ruiter PEE, de Jonge J, Kwekkeboom J, Metselaar HJ, Tilanus HW, van der Lann LJW, Kazemier G. MicroRNAs in preservation solution are more predictive of graft quality than their expression in liver tissue. *Liver Transplantation* 2012; **18**: S36
  - 57 **Bezinoover D**, Kadry Z, McCullough P, McQuillan PM, Uemura T, Welker K, Mastro AM, Janicki PK. Release of cytokines and hemodynamic instability during the reperfusion of a liver graft. *Liver Transpl* 2011; **17**: 324-330 [PMID: 21384515 DOI: 10.1002/lt.22227]
  - 58 **Lu TF**, Yang TH, Zhong CP, Shen C, Lin WW, Gu GX, Xia Q, Xu N. Dual Effect of Hepatic Macrophages on Liver Ischemia and Reperfusion Injury during Liver Transplantation. *Immune Netw* 2018; **18**: e24 [PMID: 29984042 DOI: 10.4110/in.2018.18.e24]
  - 59 **Baggiolini M**, Clark-Lewis I. Interleukin-8, a chemotactic and inflammatory cytokine. *FEBS Lett* 1992; **307**: 97-101 [PMID: 1639201 DOI: 10.1016/0014-5793(92)80909-z]
  - 60 **Su L**, Li N, Tang H, Lou Z, Chong X, Zhang C, Su J, Dong X. Kupffer cell-derived TNF- $\alpha$  promotes hepatocytes to produce CXCL1 and mobilize neutrophils in response to necrotic cells. *Cell Death Dis* 2018; **9**: 323 [PMID: 29476069 DOI: 10.1038/s41419-018-0377-4]
  - 61 **Robertson FP**, Goswami R, Wright GP, Imber C, Sharma D, Malago M, Fuller BJ, Davidson BR. Remote ischaemic preconditioning in orthotopic liver transplantation (RIPCOLT trial): a pilot randomized controlled feasibility study. *HPB (Oxford)* 2017; **19**: 757-767 [PMID: 28651898 DOI: 10.1016/j.hpb.2017.05.005]
  - 62 **Lee SY**, Kim DH, Sung SA, Kim MG, Cho WY, Kim HK, Jo SK. Sphingosine-1-phosphate reduces hepatic ischaemia/reperfusion-induced acute kidney injury through attenuation of endothelial injury in mice. *Nephrology (Carlton)* 2011; **16**: 163-173 [PMID: 21272128 DOI: 10.1111/j.1440-1797.2010.01386.x]
  - 63 **Koo A**, Komatsu H, Tao G, Inoue M, Guth PH, Kaplowitz N. Contribution of no-reflow phenomenon to hepatic injury after ischemia-reperfusion: evidence for a role for superoxide anion. *Hepatology* 1992; **15**: 507-514 [PMID: 1312056 DOI: 10.1002/hep.1840150325]
  - 64 **Ohkohchi N**. Mechanisms of preservation and ischemic/reperfusion injury in liver transplantation. *Transplant Proc* 2002; **34**: 2670-2673 [PMID: 12431569 DOI: 10.1016/s0041-1345(02)03370-5]
  - 65 **Polat C**, Tokyol C, Kahraman A, Sabuncuoğlu B, Yilmaz S. The effects of desferrioxamine and quercetin on hepatic ischemia-reperfusion induced renal disturbance. *Prostaglandins Leukot Essent Fatty Acids* 2006; **74**: 379-383 [PMID: 16698257 DOI: 10.1016/j.plefa.2006.03.007]
  - 66 **Arai M**, Thurman RG, Lemasters JJ. Ischemic preconditioning of rat livers against cold storage-reperfusion injury: role of nonparenchymal cells and the phenomenon of heterologous preconditioning. *Liver Transpl* 2001; **7**: 292-299 [PMID: 11303287 DOI: 10.1053/jlts.2001.23080]
  - 67 **Rao J**, Lu L, Zhai Y. T cells in organ ischemia reperfusion injury. *Curr Opin Organ Transplant* 2014; **19**: 115-120 [PMID: 24576906 DOI: 10.1097/MOT.0000000000000064]
  - 68 **Song P**, Zhang J, Zhang Y, Shu Z, Xu P, He L, Yang C, Wang H, Li Y, Li Q. Hepatic recruitment of CD11b+Ly6C+ inflammatory monocytes promotes hepatic ischemia/reperfusion injury. *Int J Mol Med* 2018; **41**: 935-945 [PMID: 29251315 DOI: 10.3892/ijmm.2017.3315]
  - 69 **Oliveira THC**, Marques PE, Proost P, Teixeira MMM. Neutrophils: a cornerstone of liver ischemia and reperfusion injury. *Lab Invest* 2018; **98**: 51-62 [PMID: 28920945 DOI: 10.1038/labinvest.2017.90]
  - 70 **Rampes S**, Ma D. Hepatic ischemia-reperfusion injury in liver transplant setting: mechanisms and protective strategies. *J Biomed Res* 2019; **33**: 221-234 [PMID: 32383437 DOI: 10.7555/JBR.32.20180087]
  - 71 **Pulitano C**, Ho P, Verran D, Sandroussi C, Joseph D, Bowen DG, McCaughan GW, Crawford M,



- Shackel N. Molecular profiling of postreperfusion milieu determines acute kidney injury after liver transplantation: A prospective study. *Liver Transpl* 2018; **24**: 922-931 [PMID: 29684255 DOI: 10.1002/lt.25178]
- 72 **Dinarello CA**, Novick D, Kim S, Kaplanski G. Interleukin-18 and IL-18 binding protein. *Front Immunol* 2013; **4**: 289 [PMID: 24115947 DOI: 10.3389/fimmu.2013.00289]
- 73 **Gonul Y**, Kazandi S, Kocak A, Ahsen A, Bal A, Karavelioglu A, Hazman O, Turamanlar O, Kokulu S, Yuksel S. Interleukin-18 Binding Protein Pretreatment Attenuates Kidney Injury Induced by Hepatic Ischemia Reperfusion. *Am J Med Sci* 2016; **352**: 200-207 [PMID: 27524219 DOI: 10.1016/j.amjms.2016.04.012]
- 74 **Hetz H**, Bauer M, Lahner D, Faybik P, Winning J, Ankersmit HJ, Bacher A, Krenn CG. Endothelin activation and postoperative renal failure after human liver transplantation. *Liver Transpl* 2005; **11**: 1201-1206 [PMID: 16184572 DOI: 10.1002/lt.20477]
- 75 **Gandhi CR**, Kang Y, De Wolf A, Madariaga J, Aggarwal S, Scott V, Fung J. Altered endothelin homeostasis in patients undergoing liver transplantation. *Liver Transpl Surg* 1996; **2**: 362-369 [PMID: 9346677 DOI: 10.1002/lt.500020506]
- 76 **Lladó L**, Ramos E, Figueras J, Serrano T, Torras J, Rafecas A, Fabregat J, Lama C, Busquets J, Dalmau A, Sabaté A, Jaurrieta E. Influence of endothelin-1 on hemodynamics during liver transplantation with and without temporary portocaval shunt: results of a clinical randomized study. *Liver Transpl* 2002; **8**: 27-33 [PMID: 11799482 DOI: 10.1053/jlts.2002.30338]
- 77 **Panchal HJ**, Durinka JB, Patterson J, Karipineni F, Ashburn S, Siskind E, Ortiz J. Survival outcomes in liver transplant recipients with Model for End-stage Liver Disease scores of 40 or higher: a decade-long experience. *HPB (Oxford)* 2015; **17**: 1074-1084 [PMID: 26373873 DOI: 10.1111/hpb.12485]
- 78 **Rabelink TJ**, Kaasjager KA, Boer P, Strokes EG, Braam B, Koomans HA. Effects of endothelin-1 on renal function in humans: implications for physiology and pathophysiology. *Kidney Int* 1994; **46**: 376-381 [PMID: 7967349 DOI: 10.1038/ki.1994.284]
- 79 **Kohan DE**, Inscho EW, Wesson D, Pollock DM. Physiology of endothelin and the kidney. *Compr Physiol* 2011; **1**: 883-919 [PMID: 23737206 DOI: 10.1002/cphy.c100039]
- 80 **Choi YJ**, Zhou D, Barbosa ACS, Niu Y, Guan X, Xu M, Ren S, Nolin TD, Liu Y, Xie W. Activation of Constitutive Androstane Receptor Ameliorates Renal Ischemia-Reperfusion-Induced Kidney and Liver Injury. *Mol Pharmacol* 2018; **93**: 239-250 [PMID: 29351922 DOI: 10.1124/mol.117.111146]
- 81 **Wu S**, Yao W, Chen C, Chen H, Huang F, Liu Y, Cai J, Yuan D, Hei Z. Connexin 32 deficiency protects the liver against ischemia/reperfusion injury. *Eur J Pharmacol* 2020; **876**: 173056 [PMID: 32147436 DOI: 10.1016/j.ejphar.2020.173056]
- 82 **Capalbo O**, Giuliani S, Ferrero-Fernández A, Casciato P, Musso CG. Kidney-liver pathophysiological crosstalk: its characteristics and importance. *Int Urol Nephrol* 2019; **51**: 2203-2207 [PMID: 31549285 DOI: 10.1007/s11255-019-02288-x]
- 83 **Gardner DS**, De Brot S, Dunford LJ, Grau-Roma L, Welham SJ, Fallman R, O'Sullivan SE, Oh W, Devonald MA. Remote effects of acute kidney injury in a porcine model. *Am J Physiol Renal Physiol* 2016; **310**: F259-F271 [PMID: 26608790 DOI: 10.1152/ajprenal.00389.2015]
- 84 **Chen SW**, Park SW, Kim M, Brown KM, D'Agati VD, Lee HT. Human heat shock protein 27 overexpressing mice are protected against hepatic ischemia and reperfusion injury. *Transplantation* 2009; **87**: 1478-1487 [PMID: 19461484 DOI: 10.1097/TP.0b013e3181a3c691]
- 85 **Park SW**, Kim M, Kim JY, Ham A, Brown KM, Mori-Akiyama Y, Ouellette AJ, D'Agati VD, Lee HT. Paneth cell-mediated multiorgan dysfunction after acute kidney injury. *J Immunol* 2012; **189**: 5421-5433 [PMID: 23109723 DOI: 10.4049/jimmunol.1200581]
- 86 **Han SJ**, Li H, Kim M, D'Agati V, Lee HT. Intestinal Toll-like receptor 9 deficiency leads to Paneth cell hyperplasia and exacerbates kidney, intestine, and liver injury after ischemia/reperfusion injury. *Kidney Int* 2019; **95**: 859-879 [PMID: 30777286 DOI: 10.1016/j.kint.2018.10.035]
- 87 **Perel P**, Roberts I, Sena E, Wheble P, Briscoe C, Sandercock P, Macleod M, Mignini LE, Jayaram P, Khan KS. Comparison of treatment effects between animal experiments and clinical trials: systematic review. *BMJ* 2007; **334**: 197 [PMID: 17175568 DOI: 10.1136/bmj.39048.407928.BE]
- 88 **Brekke TD**, Steele KA, Mulley JF. Inbred or Outbred? *G3 (Bethesda)* 2018; **8**: 679-686 [PMID: 29242387 DOI: 10.1534/g3.117.300495]
- 89 **Francoz C**, Glotz D, Moreau R, Durand F. The evaluation of renal function and disease in patients with cirrhosis. *J Hepatol* 2010; **52**: 605-613 [PMID: 20185192 DOI: 10.1016/j.jhep.2009.11.025]
- 90 **MacDonald AJ**, Nadim MK, Durand F, Karvellas CJ. Acute kidney injury in cirrhosis: implications for liver transplantation. *Curr Opin Crit Care* 2019; **25**: 171-178 [PMID: 30676329 DOI: 10.1097/MCC.0000000000000590]
- 91 **Yeung ACY**, Morozov A, Robertson FP, Fuller BJ, Davidson BR. Neutrophil Gelatinase-Associated Lipocalin (NGAL) in predicting acute kidney injury following orthotopic liver transplantation: A systematic review. *Int J Surg* 2018; **59**: 48-54 [PMID: 30273683 DOI: 10.1016/j.ijsu.2018.09.003]
- 92 **Kuehn EW**, Hirt MN, John AK, Muehlenhardt P, Boehlke C, Pütz M, Kramer-Zucker AG, Bashkurov M, van de Weyer PS, Kotsis F, Walz G. Kidney injury molecule 1 (Kim1) is a novel ciliary molecule and interactor of polycystin 2. *Biochem Biophys Res Commun* 2007; **364**: 861-866 [PMID: 18273441 DOI: 10.1016/j.bbrc.2007.10.103]
- 93 **Dedeoglu B**, de Geus HR, Fortrie G, Betjes MG. Novel biomarkers for the prediction of acute kidney injury in patients undergoing liver transplantation. *Biomark Med* 2013; **7**: 947-957 [PMID: 24266830 DOI: 10.2217/bmm.13.91]
- 94 **Bao GH**, Ho CT, Barasch J. The Ligands of Neutrophil Gelatinase-Associated Lipocalin. *RSC Adv*

- 2015; **5**: 104363-104374 [PMID: [27617081](#) DOI: [10.1039/C5RA18736B](#)]
- 95 **Bao G**, Clifton M, Hoette TM, Mori K, Deng SX, Qiu A, Viltard M, Williams D, Paragas N, Leete T, Kulkarni R, Li X, Lee B, Kalandadze A, Ratner AJ, Pizarro JC, Schmidt-Ott KM, Landry DW, Raymond KN, Strong RK, Barasch J. Iron traffics in circulation bound to a siderocalin (Ngal)-catechol complex. *Nat Chem Biol* 2010; **6**: 602-609 [PMID: [20581821](#) DOI: [10.1038/nchembio.402](#)]
- 96 **Cassidy H**, Slyne J, Higgins M, Radford R, Conlon PJ, Watson AJ, Ryan MP, McMorrough T, Slattery C. Neutrophil gelatinase-associated lipocalin (NGAL) is localised to the primary cilium in renal tubular epithelial cells - A novel source of urinary biomarkers of renal injury. *Biochim Biophys Acta Mol Basis Dis* 2019; **1865**: 165532 [PMID: [31422117](#) DOI: [10.1016/j.bbadis.2019.165532](#)]
- 97 **Han WK**, Bailly V, Abichandani R, Thadhani R, Bonventre JV. Kidney Injury Molecule-1 (KIM-1): a novel biomarker for human renal proximal tubule injury. *Kidney Int* 2002; **62**: 237-244 [PMID: [12081583](#) DOI: [10.1046/j.1523-1755.2002.00433.x](#)]
- 98 **Han SJ**, Jang HS, Seu SY, Cho HJ, Hwang YJ, Kim JI, Park KM. Hepatic ischemia/reperfusion injury disrupts the homeostasis of kidney primary cilia via oxidative stress. *Biochim Biophys Acta Mol Basis Dis* 2017; **1863**: 1817-1828 [PMID: [28495528](#) DOI: [10.1016/j.bbadis.2017.05.004](#)]
- 99 **Spasic M**, Jacobs CR. Primary cilia: Cell and molecular mechanosensors directing whole tissue function. *Semin Cell Dev Biol* 2017; **71**: 42-52 [PMID: [28843978](#) DOI: [10.1016/j.semcdb.2017.08.036](#)]



Published by **Baishideng Publishing Group Inc**  
7041 Koll Center Parkway, Suite 160, Pleasanton, CA 94566, USA

**Telephone:** +1-925-3991568

**E-mail:** [bpgoffice@wjgnet.com](mailto:bpgoffice@wjgnet.com)

**Help Desk:** <https://www.f6publishing.com/helpdesk>

<https://www.wjgnet.com>

