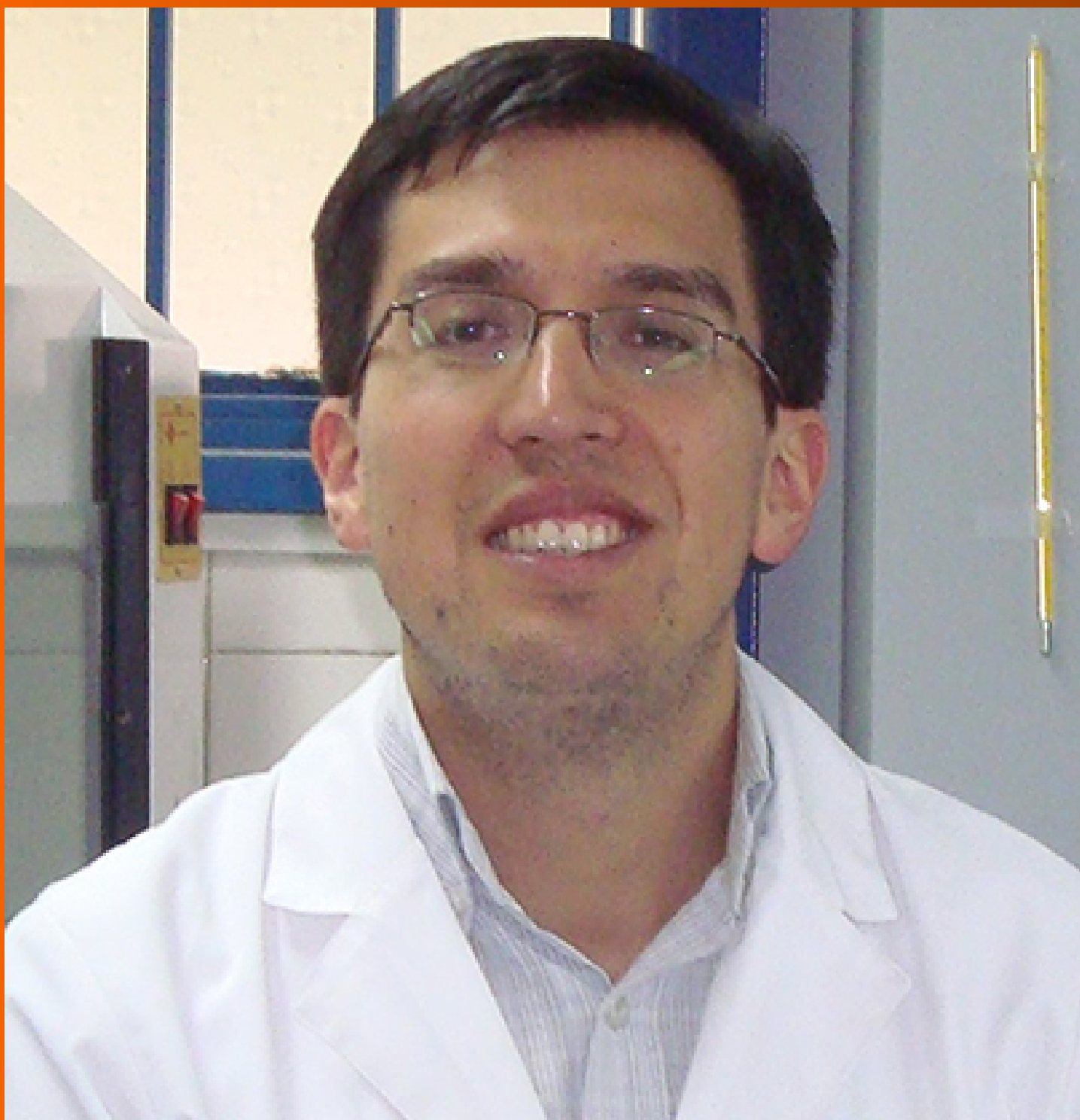


World Journal of *Methodology*

World J Methodol 2023 December 20; 13(5): 373-509



Contents

Quarterly Volume 13 Number 5 December 20, 2023

EDITORIAL

- 373 Challenges and limitations of synthetic minority oversampling techniques in machine learning
Alkhawaldeh IM, Albalkhi I, Naswhan AJ
- 379 Current protocol to achieve dental movement acceleration and pain control with Photo-biomodulation
Dominguez A
- 384 New evidence-based practice: Artificial intelligence as a barrier breaker
Ferreira RM

OPINION REVIEW

- 390 Evidence-based literature review: De-duplication a cornerstone for quality
Hammer B, Virgili E, Bilotta F

REVIEW

- 399 Crohn's disease and clinical management today: How it does?
da Silva Júnior RT, Apolonio JS, de Souza Nascimento JO, da Costa BT, Malheiro LH, Silva Luz M, de Carvalho LS, da Silva Santos C, Freire de Melo F

MINIREVIEWS

- 414 Using national census data to facilitate healthcare research
Colwill M, Poullis A
- 419 Machine learning and deep neural network-based learning in osteoarthritis knee
Ratna HVK, Jeyaraman M, Jeyaraman N, Nallakumarasamy A, Sharma S, Khanna M, Gupta A
- 426 Synoptic review on existing and potential sources for bias in dental research methodology with methods on their prevention and remedies
Agrawal AA, Prakash N, Almagbol M, Alobaid M, Alqarni A, Altamni H

ORIGINAL ARTICLE

Retrospective Study

- 439 Assessing the readability of online information about jones fracture
Al-Kharouf KFK, Khan FI, Robertson GA
- 446 Impact of COVID-19 lockdown on hospital admissions for epistaxis in Germany
Hoenle A, Wagner M, Lorenz S, Steinhart H

- 456 Effect of vaccination status on CORADS and computed tomography severity score in hospitalized COVID-19 patients: A retrospective study

Binay UD, Karavaş E, Karakeçili F, Barkay O, Aydın S, Şenbil DC

Observational Study

- 466 Study on good clinical practices among researchers in a tertiary healthcare institute in India

Harshita H, Panda PK

- 475 Inflammatory bowel disease among first generation immigrants in Israel: A nationwide epi-Israeli Inflammatory Bowel Disease Research Nucleus study

Stulman M, Focht G, Loewenberg Weisband Y, Greenfeld S, Ben Tov A, Ledderman N, Matz E, Paltiel O, Odes S, Dotan I, Benchimol EI, Turner D

Basic Study

- 484 Sequential extraction of RNA, DNA and protein from cultured cells of the same group

Cui YY

- 492 Urine exosome mRNA-based test for monitoring kidney allograft rejection: Effects of sample transportation and storage, and interference substances

McFaul M, Ventura C, Evans S, Dundar H, Rumpler MJ, McCloskey C, Lowe D, Vlassov AV

CASE REPORT

- 502 Successful hip revision surgery following refracture of a modern femoral stem using a cortical window osteotomy technique: A case report and review of literature

Lucero CM, Luco JB, Garcia-Mansilla A, Slullitel PA, Zanotti G, Comba F, Buttarro MA

ABOUT COVER

Editorial Board Member of *World Journal of Methodology*, Rodrigo Valenzuela, PhD, Associated Professor, Department of Nutrition, Faculty of Medicine, University of Chile, Independence Av. 1027, Santiago 8380000, Chile. rvalenzuelab@med.uchile.cl

AIMS AND SCOPE

The primary aim of *World Journal of Methodology* (WJM, *World J Methodol*) is to provide scholars and readers from various fields of methodology with a platform to publish high-quality basic and clinical research articles and communicate their research findings online.

WJM mainly publishes articles reporting research results obtained in the field of methodology and covering a wide range of topics including breath tests, cardiac imaging techniques, clinical laboratory techniques, diagnostic self-evaluation, cardiovascular diagnostic techniques, digestive system diagnostic techniques, endocrine diagnostic techniques, neurological diagnostic techniques, obstetrical and gynecological diagnostic techniques, ophthalmological diagnostic techniques, otological diagnostic techniques, radioisotope diagnostic techniques, respiratory system diagnostic techniques, surgical diagnostic techniques, *etc.*

INDEXING/ABSTRACTING

The WJM is now abstracted and indexed in PubMed, PubMed Central, Reference Citation Analysis, China Science and Technology Journal Database, and Superstar Journals Database.

RESPONSIBLE EDITORS FOR THIS ISSUE

Production Editor: Ying-Yi Yuan; **Production Department Director:** Xu Guo; **Editorial Office Director:** Ji-Hong Lin.

NAME OF JOURNAL

World Journal of Methodology

ISSN

ISSN 2222-0682 (online)

LAUNCH DATE

September 26, 2011

FREQUENCY

Quarterly

EDITORS-IN-CHIEF

Timotius Ivan Hariyanto

EDITORIAL BOARD MEMBERS

<https://www.wjnet.com/2222-0682/editorialboard.htm>

PUBLICATION DATE

December 20, 2023

COPYRIGHT

© 2023 Baishideng Publishing Group Inc

INSTRUCTIONS TO AUTHORS

<https://www.wjnet.com/bpg/gerinfo/204>

GUIDELINES FOR ETHICS DOCUMENTS

<https://www.wjnet.com/bpg/gerinfo/287>

GUIDELINES FOR NON-NATIVE SPEAKERS OF ENGLISH

<https://www.wjnet.com/bpg/gerinfo/240>

PUBLICATION ETHICS

<https://www.wjnet.com/bpg/gerinfo/288>

PUBLICATION MISCONDUCT

<https://www.wjnet.com/bpg/gerinfo/208>

ARTICLE PROCESSING CHARGE

<https://www.wjnet.com/bpg/gerinfo/242>

STEPS FOR SUBMITTING MANUSCRIPTS

<https://www.wjnet.com/bpg/gerinfo/239>

ONLINE SUBMISSION

<https://www.f6publishing.com>



Observational Study

Inflammatory bowel disease among first generation immigrants in Israel: A nationwide epi-Israeli Inflammatory Bowel Disease Research Nucleus study

Mira Stulman, Gili Focht, Yiska Loewenberg Weisband, Shira Greenfeld, Amir Ben Tov, Natan Ledderman, Eran Matz, Ora Paltiel, Shmuel Odes, Iris Dotan, Eric Ian Benchimol, Dan Turner

Specialty type: Public, environmental and occupational health

Provenance and peer review: Unsolicited article; Externally peer reviewed.

Peer-review model: Single blind

Peer-review report's scientific quality classification

Grade A (Excellent): 0
Grade B (Very good): B, B
Grade C (Good): C, C
Grade D (Fair): D
Grade E (Poor): 0

P-Reviewer: Moriya K, Japan; Perse M, Slovenia; Teng X, China; Wen XL, China; Hariyanto TI, Indonesia

Received: September 13, 2023

Peer-review started: September 13, 2023

First decision: October 7, 2023

Revised: October 17, 2023

Accepted: November 3, 2023

Article in press: November 3, 2023

Published online: December 20, 2023



Mira Stulman, Gili Focht, Dan Turner, The Juliet Keiden Institute of Pediatric Gastroenterology and Nutrition, Shaare Zedek Medical Center, Faculty of Medicine, The Hebrew University of Jerusalem, Jerusalem 9103102, Israel

Mira Stulman, Ora Paltiel, Braun School of Public Health and Community Medicine, Hadassah Medical Organization, Faculty of Medicine, Hebrew University of Jerusalem, Jerusalem 9574869, Israel

Yiska Loewenberg Weisband, Clalit Research Institute, Tel Aviv 6209804, Israel

Shira Greenfeld, Amir Ben Tov, Maccabi Health Services and the Sackler Faculty of Medicine, Tel Aviv University, Tel Aviv 6801296, Israel

Natan Ledderman, Meuhedet Health Services, Tel Aviv 6203854, Israel

Eran Matz, Leumit Health Services, Tel Aviv 6473704, Israel

Shmuel Odes, Faculty of Health Sciences, Ben-Gurion University of the Negev, Beer-Sheva 84105, Israel

Iris Dotan, Department of Gastroenterology, Rabin Medical Center, Petah Tikva 49100, Israel

Eric Ian Benchimol, Department of Paediatrics and Institute of Health Policy, Management and Evaluation, The Hospital for Sick Children, University of Toronto, Toronto M5G 1X8, ON, Canada

Eric Ian Benchimol, SickKids Inflammatory Bowel Disease Centre, Division of Gastroenterology, Hepatology and Nutrition, Child Health Evaluative Sciences, The Hospital for Sick Children and the SickKids Research Institute, Toronto M5G 1X8, Canada

Eric Ian Benchimol, ICES, Toronto M4N 3M5, Canada

Corresponding author: Dan Turner, MD, PhD, The Juliet Keiden Institute of Pediatric Gastroenterology and Nutrition, Shaare Zedek Medical Center, Faculty of Medicine, The Hebrew University of Jerusalem, Shmuel (Hans) Beyth St 12, Jerusalem 9103102, Israel. turnerd@szmc.org.il

Abstract

BACKGROUND

Israel has a high rate of Jewish immigration and a high prevalence of inflammatory bowel disease (IBD).

AIM

To compare IBD prevalence in first-generation immigrants *vs* Israel-born Jews.

METHODS

Patients with a diagnosis of IBD as of June 2020 were included from the validated epi-IIRN (Israeli IBD Research Nucleus) cohort that includes 98% of the Israeli population. We stratified the immigration cohort by IBD risk according to country of origin, time period of immigration, and age group as of June 2020.

RESULTS

A total of 33544 patients were ascertained, of whom 18524 (55%) had Crohn's disease (CD) and 15020 (45%) had ulcerative colitis (UC); 28394 (85%) were Israel-born and 5150 (15%) were immigrants. UC was more prevalent in immigrants (2717; 53%) than in non-immigrants (12303, 43%, $P < 0.001$), especially in the < 1990 immigration period. After adjusting for age, longer duration in Israel was associated with a higher point prevalence rate in June 2020 (high-risk origin: Immigration < 1990 : 645.9/100000, ≥ 1990 : 613.2/100000, $P = 0.043$; intermediate/low-risk origin: < 1990 : 540.5/100000, ≥ 1990 : 192.0/100000, $P < 0.001$). The prevalence was higher in patients immigrating from countries with high risk for IBD (561.4/100000) than those originating from intermediate-/low-risk countries (514.3/100000; $P < 0.001$); non-immigrant prevalence was 528.9/100000.

CONCLUSION

Lending support to the environmental effect on IBD etiology, we found that among immigrants to Israel, the prevalence of IBD increased with longer time since immigration, and was related to the risk of IBD in the country of origin. The UC rate was higher than that of CD only in those immigrating in earlier time periods.

Key Words: Epidemiology; Inflammatory bowel disease; Immigration; Environment

©The Author(s) 2023. Published by Baishideng Publishing Group Inc. All rights reserved.

Core Tip: In this nationwide study, we compared inflammatory bowel disease (IBD) rates between first-generation immigrants originating from countries of varying IBD risk *vs* Israel-born residents. Our focus on the Jewish population was aimed at narrowing the genetic variation of IBD that is usually present in immigration cohorts. We found that the prevalence rate was lower among patients from intermediate- and low-risk regions compared to patients from high-risk regions but in both, the prevalence increased in association with duration in Israel after immigration. This finding, especially among immigrants from intermediate- and low-risk countries, lends support toward the role of environmental factors in IBD pathogenesis in Israel.

Citation: Stulman M, Focht G, Loewenberg Weisband Y, Greenfeld S, Ben Tov A, Ledderman N, Matz E, Paltiel O, Odes S, Dotan I, Benchimol EI, Turner D. Inflammatory bowel disease among first generation immigrants in Israel: A nationwide epi-Israeli Inflammatory Bowel Disease Research Nucleus study. *World J Methodol* 2023; 13(5): 475-483

URL: <https://www.wjgnet.com/2222-0682/full/v13/i5/475.htm>

DOI: <https://dx.doi.org/10.5662/wjm.v13.i5.475>

INTRODUCTION

The incidence of inflammatory bowel disease (IBD) is rising sharply in low socio-demographic index regions such as Africa, Asia, and South America[1-3]. Increasing rates have also been observed among immigrants from low-resource countries to developed countries[4-6], and to a lesser extent, also *vice versa* (e.g., from the Faroe Islands to Denmark, where the excess ulcerative colitis (UC) risk in Faroese immigrants was no longer seen after immigration to the new country)[7], implying probable environmental triggers for developing IBD. However, these nationwide studies have included immigrants from various ethnicities[5,8,9] with different genetic backgrounds compared to the host country, hampering attention to the environmental effect on IBD risk. In contrast, in Israel, which is defined as a high prevalence country for IBD, reaching 0.59% of the total population in 2021, and 0.67% among the Jewish population[10,11], the vast majority of immigrants are Jewish or first-degree relatives of Jewish residents who share a similar genetic background[12]. This poses a unique opportunity to study the impact of environmental factors in a high-risk westernized country among immigrants and Israel-born residents with relatively similar genetic predisposition to IBD[13,14], originating from countries with varying degrees of IBD risk.

Israel is a melting pot of various ethnicities and cultures, characterized by waves of immigration from all over the world. As a country with a population of 9.2 million (as of June 2020), Israel has absorbed 1.5 million Jewish immigrants since 1990 with little population drift[15]. Israel has a universal healthcare system where all residents are insured by one of four Health Maintenance Organizations (HMOs), making administrative studies relatively accurate. However, previous Israeli studies comparing IBD rates among Israel-born residents *vs* immigrants were conducted in small regional cohorts[16-23].

We aimed to compare the rate of IBD in first-generation immigrants *vs* Israel-born residents using a nationwide cohort of patients with IBD. We also aimed to determine whether the duration of residence in Israel affects the rate of IBD in these immigrants. Finally, we aimed to examine whether the rate of IBD in immigrants is related to the IBD risk in their country of origin.

MATERIALS AND METHODS

We utilized the Israeli IBD Research Nucleus (epi-IIRN), a validated nationwide IBD cohort including 98% of the patients with IBD in Israel [50503 patients with IBD as of June 2020: 27490 with Crohn's disease (CD) and 23013 with UC]. Case-ascertainment algorithms were validated for each of the four HMOs in Israel [89% sensitivity, 99% specificity, 92% positive predictive value (PPV), 99% negative predictive value (NPV)]. Further algorithms classified disease type as CD or UC (92% sensitivity, 97% specificity, 97% PPV, 92% NPV)[10,24].

We constructed a prevalence cohort including all Jewish patients with IBD in the epi-IIRN database who had an active diagnosis by June 2020, stratified by Israel-born and first-generation immigrants. Our focus on the Jewish population was based on the Israeli Law of Return, which almost exclusively gives Jews the right to receive citizenship in Israel. Indeed, 99.4% of immigrants in the epi-IIRN cohort immigrated under this definition.

Country of birth and date of immigration were retrieved from the HMOs' electronic medical records for all patients with IBD. We categorized the countries of origin by degree of risk for IBD based on published systematic reviews[3,25] and according to Agrawal *et al*[5] as: Low risk [*i.e.*, incidence of CD, < 1.95/100000 person-years (PY) and UC, < 3.10/100,000 PY], intermediate risk (*i.e.*, CD, 1.95-6.38/100000 PY or UC, 3.10-7.71/100000 PY), and high risk (*i.e.*, CD, > 6.38/100000 PY or UC, > 7.71/100000 PY). Each risk category was further stratified into age groups: 0-34, 35-65, and 65+ years as of June 2020. Duration of residence in Israel was inferred by immigration time periods, divided as the years < 1990, 1990-2001, and 2002-2020, based on immigration reports from the Israeli Central Bureau of Statistics[12]. When further stratifying by risk in country of origin and age groups, time periods were divided as the years < 1990 and 1990 onwards (*i.e.*, at least 30 years of residence in Israel, or less than 30 years), again based on the national data published by the Israel Central Bureau of Statistics, with these time periods available for each risk stratum[15].

In order to minimize the possibility that IBD was diagnosed prior to immigration and was only new to the Israeli medical system, we performed a sensitivity analysis, which only included immigrants with at least a five-year lookback period from the date of immigration to the date of the first IBD code, as previously validated in the epi-IIRN cohort[24].

Patients who originated from countries with no risk data available or with missing data such as date of birth, country of origin, or immigration date were excluded. The date of death was obtained by linking each patient's unique identifying code by deterministic approach to the Israeli Ministry of Health national mortality database. Socioeconomic status scores were based on a scale of 1-10 and grouped into three categories: 1-3, low; 4-6, intermediate; and 7-10, high[26], and current residence in Israel was divided into rural and urban based on address categorization by the Israeli Central Bureau of Statistics.

Statistical analysis

Factors were compared between the cohorts using ANOVA and Kruskal-Wallis tests, corrected for multiple comparisons by the Bonferroni method, as well as chi-square tests where appropriate. Point prevalence rates were calculated by dividing the annual number of living patients by the average population as of 2020, reported per 100000 with 95% confidence intervals (CI) and age-standardized by the direct method to the Israeli population for comparison between the groups. Proportions were compared *via* chi-squared contingency tables. SPSS version 28 (IBM Corporation, Armonk, NY, United States) and R for statistical computing[27] were used for statistical analyses. The Institutional Review Board of Shaare Zedek Medical Center approved the study.

RESULTS

A total of 33544 Jewish patients were included in the study, of whom 18524 (55%) had CD and 15020 (45%) had UC; 85% were Israel-born ($n = 28394$) and 15% ($n = 5150$) were immigrants. Of the latter, 25 % ($n = 1293$) originated from high-risk countries, 70% ($n = 3615$) from intermediate-risk countries, and 5% ($n = 242$) from low-risk countries. Due to the small sample size in the low-risk group, immigrants from low- and intermediate-risk countries were grouped together and compared with those from high-risk countries. Data regarding the number of immigrants and the risk category assigned to each country are detailed in [Supplementary Table 1](#). Immigrants from Poland ($n = 191$) and Switzerland ($n = 12$) were excluded from this analysis, because the last available IBD data were from 1951-1960 and 1960-1969, respectively. The majority of immigrants were from former USSR (Union of Soviet Socialist Republics) countries (56%) and Europe (21%), followed by North America (11%), the Middle East (6%), South America (4.4%), Africa (1.5%), and Asia (0.1%). Additional

Table 1 Basic characteristics of the inflammatory bowel disease cohort by June 2020 [*n* (%), mean \pm SD and median (interquartile range) are displayed as appropriate]¹

	Origin from high-risk countries (<i>n</i> = 1293)	Origin from intermediate- and low-risk countries (<i>n</i> = 3857)	Israel-born (<i>n</i> = 28394)
Prevalence-crude rate ²	561.4	514.3	528.9
Sex (Female)	651 (50)	1953 (51)	14234 (50)
Age at immigration	25 \pm 18	25 \pm 17	N/A
IBD phenotype (Crohn's disease)	685 (53)	1748 (45)	16091 (57)
Age at diagnosis (yr)	41 \pm 18	46 \pm 17	32 \pm 15
Age at June 2020	43 \pm 17	60 \pm 17	54 \pm 19
Immigration periods			
< 1990	501 (39)	1358 (35)	N/A
1990-2001	229 (19)	2199 (57)	
2002-2020	543 (42)	300 (8)	
Socioeconomic status			
Low	65 (5)	247 (7)	1348 (5)
Intermediate	550 (52.5)	2247 (58)	10680 (37)
High	646 (50)	1247 (32)	15589 (55)
Missing	32 (2.5)	116 (3)	777 (3)
Residential location			
Rural	111 (9)	155 (4)	3173 (11)
Urban	1182 (91)	3701 (96)	25221 (89)

¹Proportions between groups were significantly different, $P < 0.001$.²Per 100000.

IBD: Inflammatory bowel disease; N/A: Not applicable.

socio-demographic characteristics are provided in [Table 1](#).

Among the Israel-born cohort, 16091 (57%) had CD and 12303 (43%) had UC, while in the immigration cohort, UC dominated: 2433 (47%) CD *vs* 2717 UC (53%) (odds ratio (OR) = 1.46 (95%CI: 1.38-1.55); $P < 0.001$). UC dominated among immigrants from low- and intermediate-risk countries [1748 (45%) CD *vs* 2109 (55%) UC, $P < 0.001$], while immigrants from high-risk countries were more likely to be diagnosed with CD [685 (53%) *vs* 608 (47%), $P = 0.0023$].

Crude IBD point prevalence rates in 2020 were highest among immigrants originating from high-risk countries [561.4 per 100000 (95%CI: 546.8-576.2)] followed by Israel-born residents [528.9 per 100000 (95%CI: 522.7-535.0)] and were lowest among immigrants from intermediate- and low-risk countries [514.3 per 100000 (95%CI: 493.2-535.9); $P < 0.001$]. In the immigration cohort, age-standardized point prevalence rates in 2020 were 342.6 per 100000 for immigrants originating from high-risk countries and 309.5 per 100000 for intermediate- and low-risk countries [OR = 1.1 (95%CI: 1.03-1.17); $P = 0.0041$]. For the Israel-born cohort, the standardized rate was twice as high (600.8 per 100000) as the entire immigration cohort (318.1 per 100000) [OR = 1.9 (1.65-2.17); $P < 0.001$]. When stratified by phenotype, CD prevalence rates were highest in the Israel-born cohort, followed by immigrants from high-risk countries, and were lowest among immigrants from intermediate- and low-risk countries (330.4 *vs* 190.0 *vs* 152.0 per 100000, respectively; $P < 0.001$; [Figure 1](#)).

Among the immigrants, there was a significant association between longer duration of living in Israel and higher IBD prevalence rates, regardless of risk in the country of origin ([Figure 2](#)). CD became dominant among patients who immigrated after 1990 from intermediate- and low-risk countries, and from 2002 among patients who immigrated from high-risk countries. When stratifying by both IBD risk and age groups, prevalence for both CD and UC increased between time periods in each sub-group, with the exception of the group aged 35-64 years among immigrants from high-risk countries ([Figure 3](#)).

In the sensitivity analysis, there was a significant and positive association between longer duration in Israel and higher IBD prevalence rates for all countries of origin and among all age groups, including those aged 35-64 years ([Supplementary Figure 1](#)). For this analysis, 1057/5150 (21%) were excluded due to insufficient look-back period from the time of immigration; 1930 (47%) had CD and 2163 (53%) had UC; and 1115 (27%) originated from high-risk countries and 2978 (73%) from intermediate- and low-risk countries. UC was more common among individuals originating from intermediate- and low-risk countries [1571 (53%) UC *vs* 1407 (47%) CD, $P < 0.001$], as well as from high-risk countries [572

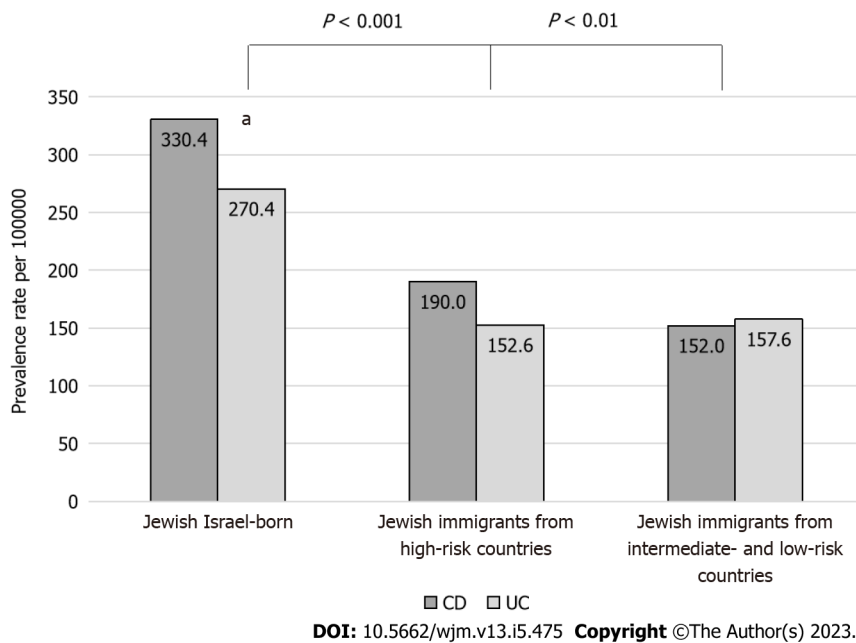


Figure 1 Inflammatory bowel disease prevalence among Jewish Israel-born and first-generation immigrants in June 2020. ^a $P < 0.01$. CD: Crohn's disease; UC: Ulcerative colitis.

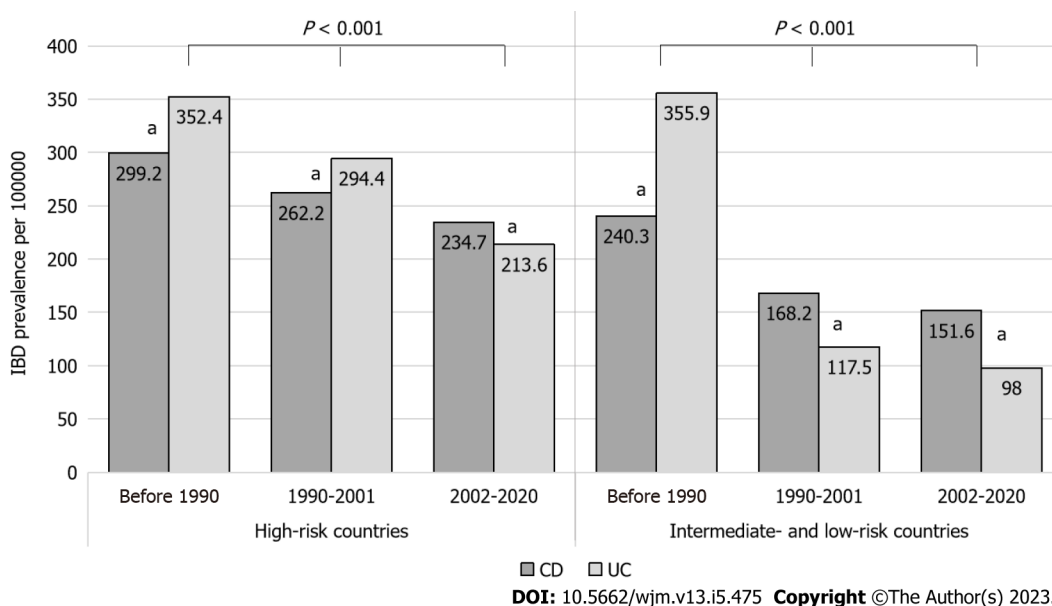


Figure 2 Inflammatory bowel disease prevalence among Jewish immigrants originating from varying risk countries in June 2020, stratified by duration of residence in Israel. ^a $P < 0.01$. CD: Crohn's disease; UC: Ulcerative colitis.

(51%) UC vs 543 (49%) CD], although in the latter, the difference was not statistically significant ($P = 0.34$).

DISCUSSION

In this nationwide study, we focused on the Jewish population to narrow the genetic variation of IBD that is usually present in immigration cohorts. We found that the IBD prevalence rate was lower among patients originating from intermediate- and low-risk regions compared to patients from high-risk regions but in both, the prevalence increased in association with duration of living in Israel after immigration. This finding, especially among immigrants from intermediate- and low-risk countries, lends support toward the role of environmental factors in IBD pathogenesis in Israel. In accordance with our findings, nationwide studies in Canada[8,28] and Sweden[9] have reported a lower risk of IBD among immigrants from low-risk countries compared to the non-immigrant population.

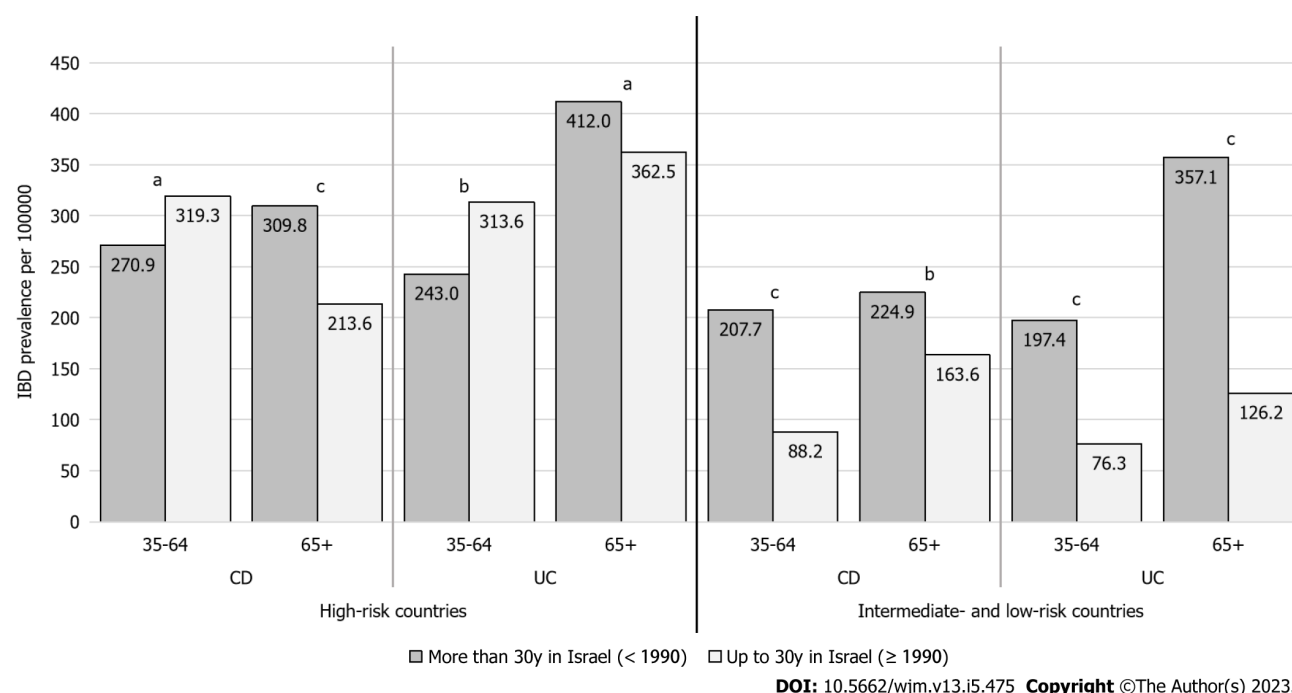


Figure 3 Inflammatory bowel disease prevalence among Jewish immigrants from varying risk countries in June 2020, stratified by age group and by duration of residence in Israel. ^a $P < 0.05$; ^b $P < 0.01$; ^c $P < 0.001$. CD: Crohn's disease; UC: Ulcerative colitis.

Previous studies on immigration to Israel were small and regional such as from the Beer Sheva region (1961-1985 and 1979-1987)[16,17], Central Israel (1970-1980)[18,19], the Kinneret sub-district of Northern Israel (1965-1989)[20,21], and Israeli Kibbutz settlements (1987-2007)[22,23]. These studies mainly compared IBD prevalence and incidence between Israel-born *vs* European-American-born and Asian-African-born Jewish immigrants. Most of these studies showed higher prevalence rates in European-American-born immigrants or Israel-born individuals, similar to our study. Our analysis, however, included all immigrants in Israel, including a substantial number of patients from low- and intermediate-risk countries, such as former USSR countries, who initially demonstrated higher UC rates but shifted to the local higher rate of CD in association with longer duration in Israel.

Although UC was predominant among patients who immigrated before 1990, CD became more prominent during the period from 2002 onwards, around the time when the switch from UC to CD dominance occurred in Israel (in 2006, as demonstrated in our previous study)[10]. High UC rates have been previously demonstrated in immigrants from both low-risk[29,30] and high-risk countries[7]. UC dominance, at least at first, may be explained by the hypothesis that UC is predominantly driven by exposure to environmental risk factors that may occur at any point in life, whereas CD is predominantly driven by genetic-environmental interactions in early life at critical stages of immunologic development [31].

Environmental risk factors affecting immigrant populations worldwide may include changes in diet, water supply, hygiene, socioeconomic status, access to the health care system, use of antibiotics, urbanization, and possibly psychological stress[32-34]. Vangay *et al*[35] demonstrated 'westernization' of the gut microbiome among 281 Southeast Asian individuals who immigrated to the United States. That study demonstrated loss of native gut microbiome diversity and function, amplified by longer duration in the United States.

Our study had several strengths. This study was the first to describe and compare the immigrant *vs* Israel-born IBD population in Israel on a national scale, who likely have similar genetic backgrounds, highlighting the role of environmental factors in IBD development in Israel. We utilized the national epi-IIRN cohort, which is based on validated algorithms accurately distinguishing patients with IBD, IBD type, and incident cases[24], thus minimizing selection bias and loss to follow-up. In Israel, healthcare coverage is universal, minimizing healthcare access bias between the immigrant and Israel-born groups. We conducted a sensitivity analysis that excluded patients without sufficient look-back period (and who may have had the disease at immigration), in an effort to minimize lead-time bias.

Limitations of our study include lack of access to national data necessary to calculate person-time and incidence rate ratios, as well as lack of data regarding lifestyle habits such as smoking and dietary intake among the immigration cohorts in the origin countries, as well as in Israel. Thus, we could not quantify the impact of specific environmental risk factors. We also excluded immigrants from countries without known IBD risk data, although the IBD immigration from these cohorts was negligible, such as some of the African countries (Supplementary Table 1).

It is almost impossible to fully disentangle periods of immigration and cohort effects explored in immigration studies in a meaningful way[36,37]. In our study, it is possible that there are periods of arrival cohort effects, but these cannot be distinguished from duration of residence effects. However, we did stratify the analysis by IBD risk in the country of origin, which may account for the cohort effect to a certain extent.

CONCLUSION

In conclusion, we found a high prevalence rate of IBD among immigrants to Israel and identified a positive association between duration of time after immigration and IBD prevalence, alluding to environmental risk factors in Israel. Future studies should explore associations between immigration with time to IBD onset, and should examine specific environmental factors among immigrants to further our understanding of the elusive IBD etiology.

ARTICLE HIGHLIGHTS

Research background

Israel has a high rate of Jewish immigration and a high prevalence of inflammatory bowel disease (IBD). The study of IBD among immigrants is of paramount importance for several compelling reasons. Immigration itself facilitates population growth and changes in demographics, thereby influencing prevalence trends. Moreover, immigration introduces individuals to new environments, dietary habits, hygiene practices, and lifestyle behaviors, which can significantly alter their risk of developing IBD as they assimilate into their host countries.

Research motivation

Investigating IBD among immigrants provides a unique opportunity to dissect the complex interplay between genetics, environment, and migration in disease development, especially if focusing on a specific ethnic group of immigrants with similar predisposition to IBD. In this study, we compared IBD rates between first-generation immigrants originating from countries of varying IBD risk *vs* Israel-born residents, focusing specifically on the Jewish population in an effort to narrow the genetic variation of IBD that is usually present in immigration cohorts, in an increasingly interconnected world.

Research objectives

We aimed to compare the rate of IBD in first-generation immigrants *vs* Israel-born residents using a nationwide cohort of patients with IBD. We also aimed to determine whether the duration of residence in Israel affects the rate of IBD in these immigrants. Finally, we aimed to examine whether the rate of IBD in immigrants is related to the IBD risk in their country of origin.

Research methods

Patients with a diagnosis of IBD as of June 2020 were included from the validated Israeli IBD Research Nucleus cohort that includes 98% of the Israeli population. We stratified the immigration cohort by IBD risk according to country of origin, time period of immigration, and age group as of June 2020.

Research results

Of the 33544 Jewish patients that were ascertained, 18524 (55%) had Crohn's disease and 15020 (45%) had ulcerative colitis (UC); 28394 (85%) were Israel-born and 5150 (15%) were immigrants. UC was more prevalent in immigrants (2717; 53%) than non-immigrants (12303, 43%, $P < 0.001$), especially in the < 1990 immigration period. The prevalence was higher in patients immigrating from countries with high risk for IBD (561.4/100000) than those originating from intermediate-/low-risk countries (514.3/100000; $P < 0.001$); non-immigrant prevalence was 528.9/100000. After adjusting for age, longer duration in Israel was associated with a higher point prevalence rate in June 2020 (high-risk origin: Immigration < 1990 : 645.9/100000, ≥ 1990 : 613.2/100000, $P = 0.043$; intermediate-/low-risk origin: < 1990 : 540.5/100000, ≥ 1990 : 192.0/100000, $P < 0.001$).

Research conclusions

Our focus on the Jewish population was aimed at narrowing the genetic variation of IBD that is usually present in immigration cohorts. We found that the prevalence rate was lower among patients from intermediate-and low-risk regions compared to patients from high-risk regions but in both, the prevalence increased in association with duration in Israel after immigration. This finding, especially among immigrants from intermediate- and low-risk countries, lends support toward the role of environmental factors in IBD pathogenesis in Israel.

Research perspectives

Future studies should explore associations between immigration with time to IBD onset, and should examine specific environmental factors among immigrants to further our understanding of the elusive IBD etiology.

ACKNOWLEDGEMENTS

The authors would like to thank Chagit Friss, Adi Mendelovich, and Rona Lujan from the Juliet Keidan Institute of Pediatric Gastroenterology at Shaare Zedek Medical Center for their expertise and assistance throughout the study; as well as Nir Zigman from Maccabi, Nirit Borovski from Leumit, Tzahi Levi from Meuhedet, and Liya Bieber from Clalit for their support in data extraction from the four HMOs' databases. Eric Benchimol holds the Northbridge Financial

Corporation Chair in Inflammatory Bowel Disease, a joint Hospital-University Chair between the University of Toronto, The Hospital for Sick Children, and the SickKids Foundation.

FOOTNOTES

Author contributions: Stulman M designed and conceptualized the study, collected, analyzed, and interpreted the data, and drafted the manuscript; Focht G, Loewenberg Weisband Y, Greenfeld S, Ben Tov A, Ledderman N, and Matz E contributed to data acquisition; Paltiel O, Odes S, Dotan I, and Benchimol EI contributed in data analysis and interpretation; Turner D designed and conceptualized the study, contributed to data analysis and interpretation, and drafted the manuscript.

Supported by the Leona M. and Harry B. Helmsley Charitable Trust, No. G-2018PG-CD009.

Institutional review board statement: The Institutional Review Board of Shaare Zedek Medical Center approved the study (Approval No. SZMC-0134-17).

Informed consent statement: The Shaare Zedek Medical Center IRB has waived the requirement to obtain informed consent.

Conflict-of-interest statement: All the authors declare that they have no conflicts of interest to disclose.

Data sharing statement: No additional data are available.

STROBE statement: The authors have read the STROBE Statement—checklist of items, and the manuscript was prepared and revised according to the STROBE Statement—checklist of items.

Open-Access: This article is an open-access article that was selected by an in-house editor and fully peer-reviewed by external reviewers. It is distributed in accordance with the Creative Commons Attribution NonCommercial (CC BY-NC 4.0) license, which permits others to distribute, remix, adapt, build upon this work non-commercially, and license their derivative works on different terms, provided the original work is properly cited and the use is non-commercial. See: <https://creativecommons.org/licenses/by-nc/4.0/>

Country/Territory of origin: Israel

ORCID number: Mira Stulman 0000-0003-2934-7393; Shmuel Odes 0000-0002-8452-9926; Iris Dotan 0000-0002-8005-7706; Eric Ian Benchimol 0000-0001-8855-3598.

S-Editor: Liu JH

L-Editor: Wang TQ

P-Editor: Yuan YY

REFERENCES

- 1 Kaplan GG, Windsor JW. The four epidemiological stages in the global evolution of inflammatory bowel disease. *Nat Rev Gastroenterol Hepatol* 2021; **18**: 56-66 [PMID: 33033392 DOI: 10.1038/s41575-020-00360-x]
- 2 Mak WY, Zhao M, Ng SC, Burisch J. The epidemiology of inflammatory bowel disease: East meets west. *J Gastroenterol Hepatol* 2020; **35**: 380-389 [PMID: 31596960 DOI: 10.1111/jgh.14872]
- 3 Ng SC, Shi HY, Hamidi N, Underwood FE, Tang W, Benchimol EI, Panaccione R, Ghosh S, Wu JCY, Chan FKL, Sung JY, Kaplan GG. Worldwide incidence and prevalence of inflammatory bowel disease in the 21st century: a systematic review of population-based studies. *Lancet* 2017; **390**: 2769-2778 [PMID: 29050646 DOI: 10.1016/S0140-6736(17)32448-0]
- 4 Damas OM, Avalos DJ, Palacio AM, Gomez L, Quintero MA, Deshpande AR, Sussman DA, McCauley JL, Lopez J, Schwartz SJ, Abreu MT. Inflammatory bowel disease is presenting sooner after immigration in more recent US immigrants from Cuba. *Aliment Pharmacol Ther* 2017; **46**: 303-309 [PMID: 28524546 DOI: 10.1111/apt.14145]
- 5 Agrawal M, Corn G, Shrestha S, Nielsen NM, Frisch M, Colombel JF, Jess T. Inflammatory bowel diseases among first-generation and second-generation immigrants in Denmark: a population-based cohort study. *Gut* 2021; **70**: 1037-1043 [PMID: 32895335 DOI: 10.1136/gutjnl-2020-321798]
- 6 Misra R, Faiz O, Munkholm P, Burisch J, Arebi N. Epidemiology of inflammatory bowel disease in racial and ethnic migrant groups. *World J Gastroenterol* 2018; **24**: 424-437 [PMID: 29391765 DOI: 10.3748/wjg.v24.i3.424]
- 7 Hammer T, Lophaven SN, Nielsen KR, von Euler-Chelpin M, Weihe P, Munkholm P, Burisch J, Lynge E. Inflammatory bowel diseases in Faroese-born Danish residents and their offspring: further evidence of the dominant role of environmental factors in IBD development. *Aliment Pharmacol Ther* 2017; **45**: 1107-1114 [PMID: 28176348 DOI: 10.1111/apt.13975]
- 8 Benchimol EI, Mack DR, Guttman A, Nguyen GC, To T, Mojaverian N, Quach P, Manuel DG. Inflammatory bowel disease in immigrants to Canada and their children: a population-based cohort study. *Am J Gastroenterol* 2015; **110**: 553-563 [PMID: 25756238 DOI: 10.1038/ajg.2015.52]
- 9 Li X, Sundquist J, Hemminki K, Sundquist K. Risk of inflammatory bowel disease in first- and second-generation immigrants in Sweden: a nationwide follow-up study. *Inflamm Bowel Dis* 2011; **17**: 1784-1791 [PMID: 21744434 DOI: 10.1002/ibd.21535]
- 10 Stulman MY, Asayag N, Focht G, Brufman I, Cahan A, Ledderman N, Matz E, Chowes Y, Eliakim R, Ben-Horin S, Odes S, Dotan I, Balicer RD, Benchimol EI, Turner D. Epidemiology of Inflammatory Bowel Diseases in Israel: A Nationwide Epi-Israeli IBD Research Nucleus

- Study. *Inflamm Bowel Dis* 2021; **27**: 1784-1794 [PMID: 33438721 DOI: 10.1093/ibd/izaa341]
- 11 **Atia O**, Magen Rimon R, Ledderman N, Greenfeld S, Kariv R, Loewenberg Weisband Y, Shaoul R, Matz E, Odes S, Goren I, Yanai H, Dotan I, Turner D. Prevalence and Outcomes of No Treatment Versus 5-ASA in Ulcerative Colitis: A Nationwide Analysis From the epi-IIRN. *Inflamm Bowel Dis* 2023 [PMID: 37084279 DOI: 10.1093/ibd/izad057]
 - 12 **Dashefsky A**, Deamicis J, Lazerwitz B. American emigration: similarities and differences among migrants to Australia and Israel. *Comp Soc Res* 1984; **7**: 337-347 [PMID: 12340264]
 - 13 The history of genetics in inflammatory bowel disease. *Ann Gastroenterol* 2014; **27**: 294 [DOI: 10.1155/1990/362497]
 - 14 **Ostrer H**, Skorecki K. The population genetics of the Jewish people. *Hum Genet* 2013; **132**: 119-127 [PMID: 23052947 DOI: 10.1007/s00439-012-1235-6]
 - 15 Israeli Central Bureau of Statistics, Population - Statistical Abstract of Israel 2021. Available from: <https://www.cbs.gov.il/en/publications/Pages/2021/Population-Statistical-Abstract-of-Israel-2021-No.72.aspx>
 - 16 **Odes HS**, Fraser D, Krawiec J. Ulcerative colitis in the Jewish population of southern Israel 1961-1985: epidemiological and clinical study. *Gut* 1987; **28**: 1630-1636 [PMID: 3428691 DOI: 10.1136/gut.28.12.1630]
 - 17 **Odes HS**, Fraser D, Krawiec J. Inflammatory bowel disease in migrant and native Jewish populations of southern Israel. *Scand J Gastroenterol Suppl* 1989; **170**: 36-8; discussion 50 [PMID: 2617190 DOI: 10.3109/00365528909091348]
 - 18 **Grossman A**, Fireman Z, Lilos P, Novis B, Rozen P, Gilat T. Epidemiology of ulcerative colitis in the Jewish population of central Israel 1970-1980. *Hepatogastroenterology* 1989; **36**: 193-197 [PMID: 2807136]
 - 19 **Fireman Z**, Grossman A, Lilos P, Hachon D, Bar Meir S, Rozen P, Gilat T. Intestinal cancer in patients with Crohn's disease. A population study in central Israel. *Scand J Gastroenterol* 1989; **24**: 346-350 [PMID: 2734593 DOI: 10.3109/00365528909093058]
 - 20 **Shapira M**, Tamir A. Crohn's disease in the Kinneret sub-district, Israel, 1960-1990. Incidence and prevalence in different ethnic subgroups. *Eur J Epidemiol* 1994; **10**: 231-233 [PMID: 7813705 DOI: 10.1007/BF01730377]
 - 21 **Shapira M**, Tamir A. Ulcerative colitis in the Kinneret sub district, Israel 1965-1994: incidence and prevalence in different subgroups. *J Clin Gastroenterol* 1998; **27**: 134-137 [PMID: 9754774 DOI: 10.1097/00004836-199809000-00006]
 - 22 **Birkenfeld S**, Zvidi I, Hazazi R, Niv Y. The prevalence of ulcerative colitis in Israel: a twenty-year survey. *J Clin Gastroenterol* 2009; **43**: 743-746 [PMID: 19369888 DOI: 10.1097/MCG.0b013e31818b3a02]
 - 23 **Zvidi I**, Hazazi R, Birkenfeld S, Niv Y. The prevalence of Crohn's disease in Israel: a 20-year survey. *Dig Dis Sci* 2009; **54**: 848-852 [PMID: 18649132 DOI: 10.1007/s10620-008-0429-1]
 - 24 **Friedman MY**, Leventer-Roberts M, Rosenblum J, Zigman N, Goren I, Mourad V, Lederman N, Cohen N, Matz E, Dushnitsky DZ, Borovsky N, Hoshen MB, Focht G, Avitzour M, Shachar Y, Chowers Y, Eliakim R, Ben-Horin S, Odes S, Schwartz D, Dotan I, Israeli E, Levi Z, Benchimol EI, Balicer RD, Turner D. Development and validation of novel algorithms to identify patients with inflammatory bowel diseases in Israel: an epi-IIRN group study. *Clin Epidemiol* 2018; **10**: 671-681 [PMID: 29922093 DOI: 10.2147/CLEP.S151339]
 - 25 IOIBD GIVES (Global IBD Visualization of Epidemiology Studies). 2020; Available from: <https://arcg.is/Onfan9>
 - 26 **Ghersin I**, Khteeb N, Katz LH, Daher S, Shamir R, Assa A. Trends in the epidemiology of inflammatory bowel disease among Jewish Israeli adolescents: a population-based study. *Aliment Pharmacol Ther* 2019; **49**: 556-563 [PMID: 30687945 DOI: 10.1111/apt.15160]
 - 27 **Team RC**. R: A language and environment for statistical computing. 2013 [DOI: 10.1109/TCACCS.2013.6938717]
 - 28 **Benchimol EI**, Manuel DG, To T, Mack DR, Nguyen GC, Gommerman JL, Croitoru K, Mojaverian N, Wang X, Quach P, Guttman A. Asthma, type 1 and type 2 diabetes mellitus, and inflammatory bowel disease amongst South Asian immigrants to Canada and their children: a population-based cohort study. *PLoS One* 2015; **10**: e0123599 [PMID: 25849480 DOI: 10.1371/journal.pone.0123599]
 - 29 **Jayanthi V**, Probert CSJ, Pinder D, Wicks ACB, Mayberry JF. Epidemiology of Crohn's disease in Indian migrants and the indigenous population in Leicestershire. *QJM* 1992; **82**: 125-138 [DOI: 10.1093/oxfordjournals.qjmed.a068653]
 - 30 **Probert CS**, Jayanthi V, Pinder D, Wicks AC, Mayberry JF. Epidemiological study of ulcerative proctocolitis in Indian migrants and the indigenous population of Leicestershire. *Gut* 1992; **33**: 687-693 [PMID: 1307684 DOI: 10.1136/gut.33.5.687]
 - 31 **Agrawal M**, Burisch J, Colombel JF, C Shah S. Viewpoint: Inflammatory Bowel Diseases Among Immigrants From Low- to High-Incidence Countries: Opportunities and Considerations. *J Crohns Colitis* 2020; **14**: 267-273 [PMID: 31359034 DOI: 10.1093/ecco-jcc/jjz139]
 - 32 **Hou JK**, Abraham B, El-Serag H. Dietary intake and risk of developing inflammatory bowel disease: a systematic review of the literature. *Am J Gastroenterol* 2011; **106**: 563-573 [PMID: 21468064 DOI: 10.1038/ajg.2011.44]
 - 33 **Amre DK**, D'Souza S, Morgan K, Seidman G, Lambrette P, Grimard G, Israel D, Mack D, Ghadirian P, Deslandres C, Chotard V, Budai B, Law L, Levy E, Seidman EG. Imbalances in dietary consumption of fatty acids, vegetables, and fruits are associated with risk for Crohn's disease in children. *Am J Gastroenterol* 2007; **102**: 2016-2025 [PMID: 17617201 DOI: 10.1111/j.1572-0241.2007.01411.x]
 - 34 **Niewiadomski O**, Studd C, Wilson J, Williams J, Hair C, Knight R, Prewett E, Dabkowski P, Alexander S, Allen B, Dowling D, Connell W, Desmond P, Bell S. Influence of food and lifestyle on the risk of developing inflammatory bowel disease. *Intern Med J* 2016; **46**: 669-676 [PMID: 27059169 DOI: 10.1111/imj.13094]
 - 35 **Vangay P**, Johnson AJ, Ward TL, Al-Ghalith GA, Shields-Cutler RR, Hillmann BM, Lucas SK, Beura LK, Thompson EA, Till LM, Batres R, Paw B, Pergament SL, Saenyakul P, Xiong M, Kim AD, Kim G, Masopust D, Martens EC, Angkurawaranon C, McGready R, Kashyap PC, Culhane-Pera KA, Knights D. US Immigration Westernizes the Human Gut Microbiome. *Cell* 2018; **175**: 962-972.e10 [PMID: 30388453 DOI: 10.1016/j.cell.2018.10.029]
 - 36 **Bell A**, Jones K. The impossibility of separating age, period and cohort effects. *Soc Sci Med* 2013; **93**: 163-165 [PMID: 23701919 DOI: 10.1016/j.socscimed.2013.04.029]
 - 37 **Fosse E**, Winship C. Analyzing age-period-cohort data: A review and critique. *Annu Rev Sociol* 2019; **45**: 467-492 [DOI: 10.1146/annurev-soc-073018-022616]



Published by **Baishideng Publishing Group Inc**
7041 Koll Center Parkway, Suite 160, Pleasanton, CA 94566, USA

Telephone: +1-925-3991568

E-mail: bpgoffice@wjgnet.com

Help Desk: <https://www.f6publishing.com/helpdesk>

<https://www.wjgnet.com>

