

73735\_Auto\_Edited-check.docx

# Spontaneous liver rupture following SARS-CoV-2 infection in late pregnancy: A case report

Ambrož R *et al.* SARS-CoV-2 liver rupture

Radek Ambrož, Martin Stašek, Ján Molnár, Petr Špička, Dušan Klos, Jozef Hambálek, Daniela Skanderová

## Abstract

### BACKGROUND

Coronavirus disease-2019 (COVID-19) caused by severe acute respiratory syndrome coronavirus 2 (SARS-CoV-2) is characterized by systemic inflammatory response syndrome and vasculopathy. SARS-CoV-2 associated mortality ranges from 2% to 6%. Liver dysfunction was observed in 14%-53% of COVID-19 cases, especially in moderate severe cases. However, no cases of spontaneous hepatic rupture in pregnant women with SARS-CoV-2 have been reported.

### CASE SUMMARY

A 32-year-old pregnant patient (gestational age: 32 wk + 4 d) without any remarkable medical history or long-term medication presented with epigastralgia. Infectious, non-infectious, and pregnancy-related hepatopathies were excluded. Sudden onset of right subcostal pain with D-dimer and liver enzyme elevation was followed by shock with thrombocytopenia. While performing an emergency cesarean section, hemoperitoneum was observed, and the patient delivered a stillbirth. A 6-cm liver rupture at the edges of segments V and VI had occurred, which was sutured and drained. SARS-CoV-2 positivity on reverse transcription-PCR was confirmed. Further revisions for intrahepatic hematoma with hemorrhagic shock and abdominal compartment syndrome were performed. Subsequently, the patient developed hemoptysis, which was treated using bronchoscopic therapy and non-invasive ventilation. Liver tissue biopsy revealed hemorrhagic foci and necrosis with an irregular centrilobular

distribution. Antiphospholipid syndrome and autoimmune hepatitis were also ruled out. Fetal death was caused by acute intrauterine asphyxia.

## CONCLUSION

This case reveals that pregnant women with SARS-CoV-2 infection may be predisposed to liver parenchyma disease with liver rupture.

**Key Words:** Liver rupture; SARS-CoV-2; Pregnancy; Abortion; HELLP; Case report

Ambrož R, Stašek M, Molnár J, Špička P, Klos D, Hambálek J, Skanderová D. Spontaneous liver rupture following SARS-CoV-2 infection in late pregnancy: A case report. *World J Clin Cases* 2022; In press

**Core Tip:** Severe acute respiratory syndrome coronavirus 2 (SARS-CoV-2) infection may contribute to the worsening of hepatopathy during pregnancy, because of its effect on the endothelium in the systemic inflammatory response syndrome microenvironment. Liver rupture causes high mortality in both the mother and fetus. Such a life-threatening scenario requires close collaboration between the obstetrician and the surgeon with an urgent indication for cesarean section, preferably by midline laparotomy with meticulous control of the liver and treatment of any injury. The presence of SARS-CoV-2 in pregnant women and its association with the development of severe hepatopathy in pregnancy requires further research.

## INTRODUCTION

Coronavirus disease-2019 (COVID-19) caused by severe acute respiratory syndrome coronavirus 2 (SARS-CoV-2), is characterized by systemic inflammatory response syndrome (SIRS), vascular damage, microangiopathy, angiogenesis, and thrombosis<sup>[1]</sup>. High mortality rates are associated with SARS-CoV-2 (2%-6%), especially among the elderly and individuals with underlying comorbidities such as diabetes, hypertension,

and heart disease<sup>[2]</sup>. In the current pandemic, hepatic dysfunction was observed in 14-53% of SARS-CoV-2-infection cases, especially in severe cases. Moreover, acute liver injury has a higher mortality rate<sup>[2]</sup>. Studies related to liver disease and involvements during pregnancy seem to be limited.

The mechanisms causing potential liver damage include direct viral cytotoxicity<sup>[3]</sup>, immune-related damage due to SIRS<sup>[4]</sup>, respiratory failure-related hypoxic changes, pro-coagulation intravascular state with endotheliitis, drug-induced liver injury and in severe cases of cardiac congestion. The exacerbation of hidden/pre-existing liver disease should also be considered.

In direct hepatic damage, angiotensin-converting enzyme 2 (ACE2) appears to be the key receptor for viral entry into the cell<sup>[5]</sup>. The virus attaches to the host cell *via* the viral S protein connection to the host transmembrane serine protease 2<sup>[6]</sup>. Subsequently, the virus is incorporated into the cell by endocytosis and the viral genome is released from the endosome<sup>[7,8]</sup>. The viral genome is replicated in the replicase-transcriptase complex<sup>[9,10]</sup>. The assembly of mature SARS-CoV-2 virions occurs within the endoplasmic reticulum-to-Golgi intermediate compartment<sup>[11,12]</sup> with subsequent exocytosis<sup>[13]</sup>.

Cases of spontaneous liver rupture during pregnancy with SARS-CoV-2 infection have not been reported yet.

## **CASE PRESENTATION**

### ***Chief complaints***

A 32-year-old woman with a gestational age of 32 wk + 4 d experienced epigastric pain. She was asymptomatic for COVID-19.

### ***History of present illness***

She first experienced pain in the epigastrium 2 h before the initial examination, with a gradual worsening of her condition.

### ***History of past illness***

The patient had no comorbidities and was not taking any chronic medication.

### *Personal and family history*

There was no significant personal or family history.

### *Physical examination*

Physical examination revealed epigastric pain, with a body temperature of 36.5 °C, blood pressure of 17, 6/11 kPa, and oxygen saturation of 97%. Electrocardiogram (ECG) and cardiotocographic findings were normal. We initially suspected her to have hemolysis, elevated liver enzymes, and low platelet count syndrome (HELLP) and performed fetal lung maturity induction while administering 12 mg betamethasone intravenously for 24 h.

### *Laboratory examinations*

Blood tests results revealed elevated liver enzymes [alanine aminotransferase (ALT): 272.4 IU/L, aspartate transaminase (AST): 159.6 IU/L, and alkaline phosphatase (ALP): 172.8 IU/L], without any findings of viral hepatitis (the samples were negative for hepatitis A virus, hepatitis B virus, hepatitis C virus, hepatitis E virus, Epstein-Barr virus (EBV), human cytomegalovirus (HCMV)). Her coagulation parameters were normal; hence other pregnancy-related liver pathologies were excluded. The hepatologist suggested that her condition was most likely related to hepatopathy of unknown etiology. SARS-CoV-2 positivity on reverse transcription-PCR was confirmed, although the patient was asymptomatic.

### *Imaging examinations*

The initial ultrasound examination revealed a live fetus without any abnormal findings.

### *Further diagnostic work-up*

Over a week, the liver enzymes and platelet count returned to normal levels. On the fourth day of hospitalization, pain developed in the right subcostal region and physical examination revealed a positive Murphy's sign, while her ECG was normal, D-dimers concentration was above 10000 µg/L, and liver enzymes were slightly elevated (ALT: 372 IU/L; AST: 258 IU/L). Therefore, we ruled out acute coronary syndrome. Abdominal ultrasound examination confirmed no abnormalities in the abdominal organs, a viable fetus, and no free fluid in the abdominal cavity. We administered anticoagulant therapy (0.3 mL low molecular weight heparin every 12 h). The correlation between the laboratory findings and clinical findings was unclear. Within 2 h, the patient developed a collapsed state without trauma and her blood test showed a marked increase in ALT (1789.8 IU/L) and AST (1747.2 IU/L). In addition, lactate dehydrogenase (LD) levels (1671 IU/L) and platelets ( $88 \times 10^9$ /L) were highly elevated. Therefore, an emergency cesarean section was planned.

### **FINAL DIAGNOSIS**

According to the laboratory and clinical findings, the diagnosis was most likely spontaneous liver rupture associated with SARS-CoV-2 infection.

### **TREATMENT**

While performing the emergency cesarean section, we observed the findings of hemoperitoneum, and an apparent 6-cm liver rupture on the edges of segments V and VI of the right hepatic lobe. Suture and drainage were performed. The patient delivered a baby without signs of vitality, and lost 800 mL of blood. The postoperative condition was accompanied by a deficient response to supplementation with blood derivatives. The patient underwent <sup>9</sup>computed tomography (CT) of the abdomen with intravenous <sup>6</sup>contrast (Figure 1, Figure 2A and B), which revealed a massive subcapsular hematoma in the right hepatic lobe with active bleeding from the branches of the hepatic artery. Thereafter, embolization was performed as we suspected limited viability of the right hepatic lobe and proceeded with more conservative management. Hemodynamic



decompensation continued, while paralytic ileus developed with an increase in the abdominal volume and dark bloody secretion was drained. There were signs of abdominal compartment syndrome and anemia (hemoglobin, 107-71 g/L). We investigated the abdominal cavity for bowel insufflation and performed drainage of a bulky subcapsular hematoma (involving the V, VI, VII, and VIII segments and good vitality of segments IV, II, and III). Liver packing was performed to control the damage. Postoperatively, the patient was maintained in a stable condition with mechanical ventilation and tested positive for SARS-CoV-2 infection. A repeat laparotomy was performed after two days when the liver packing was discontinued and no liver hemorrhages were observed. Furthermore, her subcapsular hematoma did not progress, and the liver parenchyma was stable. Thereafter, we gradually adjusted the liver parameters without coagulopathy or thrombocytopenia and extubated or spontaneously ventilated. A postoperative CT scan of the liver revealed no free fluid or progression of hepatic hematoma, and the drains were removed. Chest CT revealed ground-glass opacity in both lungs with right pleural effusion, which was resolved by puncture, followed by massive hemoptysis conservatively treated with bronchoscopy (adrenaline) and non-invasive ventilation with high-flow air.

#### **OUTCOME AND FOLLOW-UP**

A biopsy of the liver tissue showed foci of hemorrhage and necrosis with an irregular centrilobular distribution (Figures 2), no hepatocyte steatosis and no cholestasis. Fibrin thrombi or inflammatory infiltrations were not detected. Thus, patients with HELLP syndrome were excluded. Pathological dissection of the placenta and fetus showed that the chorionic plate and decidua basalis did not show inflammation, thrombosis, or vasculitis. Both chorionic and stem villi were small with regard to the gestational age, suggesting an acceleration of maturation, and were vascularly altered with more abundant Hofbauer macrophages. We also noted irregular arborization with globular appearance of distal villous hypoplasia. Multifocally, a significant fibrinoid increase was clear, which occurred intravillously; fibrinoid sites completely filled individual villi

but also intervillously and subchorially; however, this finding did not exceed 30% of the tissue volume. Escalation was excessive knotting of the hyperplastic syncytiotrophoblasts that appeared similar to Tenney-Parker changes. Cytotrophoblasts were discontinuous. Agglutination and infarcts were present below the decidua, chorion, and centrally in the placental parenchyma; however, they were within 15% of the parenchyma. Thus, it was shown that fetal death occurred because of acute intrauterine asphyxia during acute ischemia of the placenta under hemorrhagic shock conditions in the mother. The subsequent course was no longer complicated, and the patient was followed up at our department and the pulmonary clinic, and antiphospholipid syndrome was ruled out. <sup>6</sup> A follow-up CT scan revealed significant regression of the pulmonary changes with fluidothorax regression on the right. According to the control spirometry findings, ventilation was within normal limits.

## DISCUSSION

Pregnancy-specific liver diseases can be categorized as early and late pregnancy diseases; the HELLP syndrome is a late pregnancy-related liver disease along with liver rupture/infarction<sup>14</sup>. Other late pregnancy-related liver diseases include intrahepatic cholestasis in pregnancy, acute fatty liver of pregnancy (AFLP), and nonspecific elevated liver enzymes. Liver rupture occurs in approximately 1 per 200000 pregnancies and is largely associated with AFLP or HELLP syndrome, rarely without associated liver disease<sup>15</sup>. Running a panel of blood tests is the standard protocol for diagnosing hepatic pathology: ALT, AST, ALP, gamma-glutamyl transferase, bilirubin, Alpha-fetoprotein, LD, hepatitis antibodies (A, B, C, E, HCMV, EBV, ceruloplasmin, copper, iron, ferritin, dot liver 7, coagulation parameters, schistocyte smear). The differential diagnoses of the causes of liver rupture in pregnancy include HELLP syndrome, severe pre-eclampsia, and hemangioma rupture.

According to our differential diagnosis, HELLP syndrome appeared to be the most likely diagnosis, which occurs in 1 per 1000 pregnancies and is associated with a high mortality rate (up to 40%) due to the possible occurrence of disseminated intravascular



coagulopathy<sup>[16]</sup> and spontaneous liver rupture<sup>[17,18]</sup>. The only causal therapy is to terminate the pregnancy immediately after confirming the diagnosis and evaluating the clinical condition of the pregnant woman and the gestational age of the fetus. In the present case, we observed the angiogenic markers, sharp rise in liver transaminases over a short period, inconclusive clinical signs, negative schistocytes, and the coincidence with lung involvement (Table 1), and concluded that they were unrelated to HELLP. Likewise, the histological findings of the liver biopsy specimens did not confirm this diagnosis. Pre-eclampsia, a multisystem disease associated with *de novo* hypertension occurring after the 20<sup>th</sup> wk of pregnancy with proteinuria, was considered. One component of the clinical picture is characterized by the dysfunction of other maternal organs, such as renal insufficiency, hepatic involvement, neurological or hematological complications, and uteroplacental dysfunction or fetal growth restriction<sup>[19]</sup>. Risk factors for the occurrence of pre-eclampsia include antiphospholipid syndrome, previous pre-eclampsia, chronic hypertension, pre-gestational diabetes, pre-pregnancy body mass index > 30 kg/m<sup>2</sup>, and the use of assisted reproductive technology<sup>[20]</sup>. Pre-eclampsia commonly presents with headache, epigastric pain, visual disturbances, nausea, and vomiting<sup>[21]</sup>. The association between pre-eclampsia and HELLP syndrome requires sufficient explanation.

Regarding the inconclusive diagnostic modalities associated with lung involvement, we considered the possibility of liver rupture due to damage caused by SARS-CoV-2 infection. The presumed mechanism of viral entry is *via* the host's ACE2 receptors, which are abundantly present in alveolar type-2 cells. ACE2 receptors are expressed in the gastrointestinal tract, vascular endothelium, and liver cholangiocytes. Hepatic involvement may be directly related to the cytopathic effect of the virus, uncontrolled immune reaction, sepsis, or drug-induced liver damage<sup>[2]</sup>. Recent findings suggest that viral elements may be present in endothelial cells, with an accumulation of dead inflammatory endothelial cells. These findings indicate that SARS-CoV-2 infection facilitates the pathogenesis of endotheliitis in several organs as a direct consequence of viral involvement and the inflammatory response of the host<sup>[22]</sup>.

Vascular effects of SARS-CoV-2 (endotheliitis, procoagulation, and thrombosis) seem to be important contributors to placental damage. Potential fetal complications are most likely linked to placental circulation damage. Vivanti *et al*<sup>[23]</sup> described a transplacental transmission of SARS-CoV-2, where the placenta showed diffuse perivillous fibrin deposits with infarction and acute and chronic intervillous lesions. Immunohistochemistry may prove a seropositive status of the villous trophoblast for SARS-CoV-2 nucleocapsid protein<sup>[23]</sup>. Linenhan *et al*<sup>[24]</sup> hypothesized that trophoblast necrosis is directly related to either viral damage or the host's subsequent inflammatory response. Thus, it appears as a form of placental disease that is specifically associated with direct infection of the placental villous trophoblast by SARS-CoV-2, which represents true SARS-CoV-2 placentitis. During hepatic hemorrhage, apart from offering conservative therapy with hemoptysis, vasopressor support, and hemotherapy, the possibility of performing embolization of the branches of the hepatic artery should be considered along with surgical management. The success of embolization depends on the visualization of the hemorrhagic focus, embolization technique, and availability of the artery. This is indicated in hemodynamically stable patients<sup>[25]</sup>.

Surgical intervention is indicated for hemodynamic instability, usually involving an approach by a midline laparotomy, also accounting for the possibility of association with the cesarean section; when it is technically impossible to carry out a primary liver suture, it is suitable to apply the principles of damage control surgery (packing, ligation of the portal vein branch, followed by stabilization, and a repeat laparotomy with a definitive control of hemorrhage and a liver tissue biopsy).

Liver transplantation can be considered an ultimum refugium in cases of hepatic failure. However, in cases of SARS-CoV-2 infection, liver transplantation is a high-risk procedure, despite reports of successful cases<sup>[26]</sup>. Hence, the prognosis of the patient depends on the degree of SIRS development, multi-organ involvement during SARS-CoV-2 infection, and the early indication of interventional therapy.

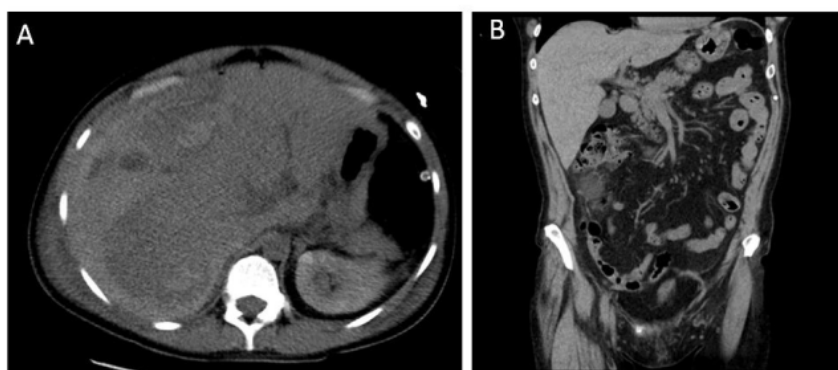
The limitation of histology is the absence of direct detection of viral particles in the liver parenchyma, and the examination was not available at the time of the histological

evaluation. The influence of viral infection can be considered a primary and secondary cause. It can be assumed that SARS-CoV-2 infection may have contributed to the development of SIRS and endotheliitis, with an effect on the occurrence of microvascular and macrovascular thromboses to aggravate pre-existing hepatopathy. However, this premise needs to be further investigated and evaluated in a larger cohort of patients.

## **CONCLUSION**

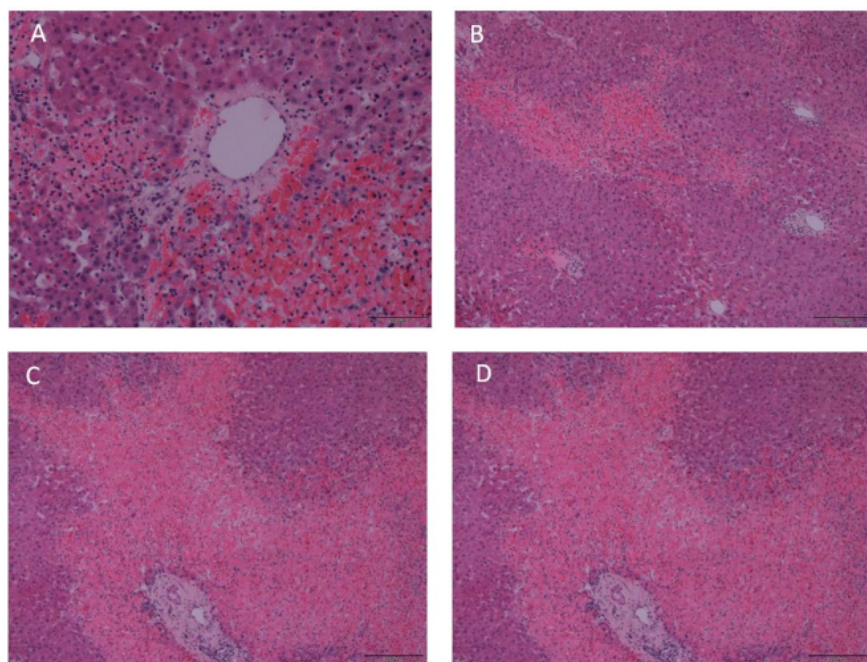
SARS-CoV-2 infection may contribute to the worsening of hepatopathy during pregnancy, possibly by affecting the endothelium in the SIRS microenvironment that may contribute to liver rupture developing in the framework of severe hepatopathy. Spontaneous liver rupture is associated with massive infant and maternal mortality rates as high as 42%<sup>[27]</sup> and 39%<sup>[17]</sup>, respectively. The management of such clinical case scenarios requires close collaboration between the obstetrician and the surgeon with an urgent indication for cesarean section, preferably approaching through midline laparotomy after a thorough liver examination for any liver injury and its treatment. Nevertheless, the complications induced by the presence of SARS-CoV-2 in the development of severe hepatopathy during pregnancy require further research.

## **Figure Legends**



DOI: 10.12998/wjcc.v0.i0.0000 Copyright ©The Author(s) 2022.

**Figure 1 Abdominal computed tomography with intravenous contrast.** A: Transverse section: right hepatic lobe haematoma (158 × 94 mm); B: Sagittal section: Right hepatic lobe haematoma, craniocaudal size 240 mm.



DOI: 10.12998/wjcc.v0.i0.0000 Copyright ©The Author(s) 2022.

**Figure 2 Detail of liver.** A: Necrosis located around the central vein; B: Irregularly distributed necroses; C: Portobiliary and centrilobular necrosis; D: Tissue with necrosis in the area of the central vein and portobiliary. All images depict hematoxylin and eosin stained slides, scale bar is 100  $\mu$ m.

**Table 1 Comparison of HELLP, pre-eclampsia, spontaneous liver rupture in pregnancy and our case**

	Hypertension	Hemolysis/changes coagulation/endothelial lesions	in Leu/Tc	Liver function tests	Symptomatics	Histology	Proteinuria/ Creatinine
HELLP	Hypertension SBP $\geq$ 18, 6 kPa listed) or DBP $\geq$ 11, 9 kPa	Hemolysis (2 of the criteria listed): Peripheral blood smear with schistocytes and echinocytes; SBR $\geq$ 20,52 $\mu$ mol/L; Low SHP $\leq$ 2210,5 $\mu$ mol/L or LDH $\geq$ 2 times higher than normal level; severe anemia without blood loss	100 $\times$ 10 <sup>9</sup> /L	LFT: AST right or ALT $\geq$ 2 abdominal quadrant; times higher than headache; the normal and level vomiting; hematoma, intravillous swelling of the thrombosis; hepatic: extremities	upper to gestational age, decidual vasculopathy, infarcts in the central portion, retroplacental	Small placenta	Proteinuria: $\geq$ 0, 3 g / 24 h,
PRE-ECLAMPSIA	Hypertension SBP $\geq$ 18, 6 kPa or	NS	NS	NS	NS	NS	Proteinuria: $\geq$ 0, 3 g / 24 h,

mild form DBP  $\geq$  11, 9 kPa, but < 5 g/24 h

measured on at least two occasions 4 h apart in previously normotensive women

PRE- Hypertension: Schistocytes on peripheral Tc: < Elevation of Severe pain in the Placental: No significant SCr > 97.262 ECLAMPSIA SBP  $\geq$  21, 3 kPa or blood smear; DIC 100  $\times$  LFT right or middle differences from HELLP  $\mu$ mol/L or severe form DBP  $\geq$  14, 6 kPa, 10<sup>9</sup>/L epigastric; doubling of SCr level in measured on at newly developed the absence of least two cerebral/visual other kidney occasions 4 h symptoms; pulmonary disease apart

Spontaneous NS Endothelial dysfunction; NS Elevation of Abdominal pain; NS liver rupture fibrin thrombus production LFT nausea; vomiting in pregnancy Patient Normotension Negative schistocytes on Leu: 13 SBR in Epigastric and Hepatic: With foci of sFlt-1/PlGF = peripheral smear  $\times$  normal right hemorrhage and 151



10<sup>9</sup>/L; range; LDH hypochondrium necrosis centrilobularly;  
Tc in in normal pain placental: Without signs  
normal range: ALT: 6 of uterine vasculopathy  
range 272,4 IU/L;  
AST: 159  
IU/L; ALP:  
172,8 IU/L

sFlt-1/PlGF Normal range < 38. NS: Non-specific; SBP/DBP: Systolic/diastolic blood pressure; Leu: Leukocytes; Tc: Thrombocytes; LDH: Lactate dehydrogenase; ALT: Alanine aminotransferase; AST: Aspartate aminotransferase; LFT: Liver function tests; SHP: Serum haptoglobin; SBR: Serum bilirubin; SCr: Serum creatinine; sFlt-1: Soluble fms-like tyrosine kinase-1; PlGF: Placental growth factor; DIC: Disseminated intravascular coagulation.

# 14%

SIMILARITY INDEX

### PRIMARY SOURCES

- 1

Laura Linehan, Keelin O'Donoghue, Susan Dineen, Jessica White, John R. Higgins, Brendan Fitzgerald. "SARS-CoV-2 Placentitis: An uncommon complication of maternal COVID-19", Placenta, 2021  
Crossref

56 words — 2%
- 2

Dinesh Jothimani, Radhika Venugopal, Mohammed Forhad Abedin, Ilankumaran Kaliamoorthy, Mohamed Rela. "COVID-19 and Liver.", Journal of Hepatology, 2020  
Crossref

42 words — 1%
- 3

[cancerres.unboundmedicine.com](https://cancerres.unboundmedicine.com)  
Internet

38 words — 1%
- 4

[www.wjgnet.com](http://www.wjgnet.com)  
Internet

34 words — 1%
- 5

[www.ncbi.nlm.nih.gov](https://www.ncbi.nlm.nih.gov)  
Internet

33 words — 1%
- 6

"Inflammatory Bowel Disease", The American Journal of Gastroenterology, 9/2006  
Crossref

28 words — 1%
- 7

Walter O. Vasquez-Bonilla, Roberto Orozco, Víctor Argueta, Manuel Sierra et al. "A review of the main

21 words — 1%

# histopathological findings in coronavirus disease 2019", Human Pathology, 2020

Crossref

- 
- |          |  |               |
|----------|--|---------------|
| <b>8</b> | <a href="https://hdl.handle.net">hdl.handle.net</a><br><small>Internet</small> | 20 words — 1% |
|----------|--|---------------|
- 
- |          |  |               |
|----------|--|---------------|
| <b>9</b> | <a href="https://wp.cov19longhaulfoundation.org">wp.cov19longhaulfoundation.org</a><br><small>Internet</small> | 19 words — 1% |
|----------|--|---------------|
- 
- |           |  |               |
|-----------|--|---------------|
| <b>10</b> | <a href="https://en.wikipedia.org">en.wikipedia.org</a><br><small>Internet</small> | 17 words — 1% |
|-----------|--|---------------|
- 
- |           |   |                 |
|-----------|---|-----------------|
| <b>11</b> | <a href="#">Katharina M. Scherer, Luca Mascheroni, George W. Carnell, Lucia C. S. Wunderlich et al. "The SARS-CoV-2 nucleocapsid protein associates with the replication organelles before viral assembly at the Golgi/ERGIC and lysosome-mediated egress", Cold Spring Harbor Laboratory, 2021</a><br><small>Crossref Posted Content</small> | 16 words — < 1% |
|-----------|---|-----------------|
- 
- |           |   |                 |
|-----------|---|-----------------|
| <b>12</b> | <a href="#">Sandip Chavan, Kiran K. Mangalaparathi, Smrita Singh, Santosh Renuse et al. "Mass Spectrometric Analysis of Urine from COVID-19 Patients for Detection of SARS-CoV-2 Viral Antigen and to Study Host Response", Journal of Proteome Research, 2021</a><br><small>Crossref</small> | 16 words — < 1% |
|-----------|---|-----------------|
- 
- |           |  |                 |
|-----------|--|-----------------|
| <b>13</b> | <a href="https://journals.sagepub.com">journals.sagepub.com</a><br><small>Internet</small> | 15 words — < 1% |
|-----------|--|-----------------|
- 
- |           |   |                 |
|-----------|---|-----------------|
| <b>14</b> | <a href="#">Chan, Anthony W. H., Alberto Quaglia, Beate Haugk, and Alastair Burt. "Obstetric Liver Disease", Atlas of Liver Pathology, 2014.</a><br><small>Crossref</small> | 12 words — < 1% |
|-----------|---|-----------------|
- 
- |           |  |  |
|-----------|--|--|
| <b>15</b> | <a href="https://apps.who.int">apps.who.int</a><br><small>Internet</small> |  |
|-----------|--|--|

12 words — < 1%

16 [hub.hku.hk](https://hub.hku.hk)  
Internet

12 words — < 1%

17 [academic.oup.com](https://academic.oup.com)  
Internet

10 words — < 1%

18 [editorialrestauro.com.mx](https://editorialrestauro.com.mx)  
Internet

10 words — < 1%

19 [umassmed.edu](https://umassmed.edu)  
Internet

10 words — < 1%

20 [www1.racgp.org.au](https://www1.racgp.org.au)  
Internet

10 words — < 1%

21 Badhaasaa Beyene, Burka Mohammadsani, Minewor Abdlhadi, Kedest Getachew, Hatae Ahmedin. "Khat induced bezoar; a rare cause of small bowel obstruction:a case report", International Journal of Surgery Case Reports, 2022  
Crossref

8 words — < 1%

22 [doktori.bibl.u-szeged.hu](https://doktori.bibl.u-szeged.hu)  
Internet

8 words — < 1%

23 [www.mdpi.com](https://www.mdpi.com)  
Internet

8 words — < 1%