

## Match Overview

1 Internet 105 words  
crawled on 06-Feb-2019  
[stemcellsjournals.onlinelibrary.wiley.com](http://stemcellsjournals.onlinelibrary.wiley.com)

2%

**Name of Journal:** *World Journal of Gastroenterology*

**Manuscript NO:** 61292

**Manuscript Type:** ORIGINAL ARTICLE

*Basic Study*

**LGR5 marks different cancer stem cell compartments in human CaCo-2 and LoVo colon cancer lines**

Colon cancer lines possess different stem cell compartments

**Abstract**

**BACKGROUND**

*Colon cancer cell lines are widely used for research and for the screening of drugs that specifically target the stem cell compartment of colon cancers. It was reported that colon cancer carcinoma specimens contain a subset of LGR5-expressing stem cells, these so-called "tumour-initiating" cells, reminiscent in their properties of the normal intestinal stem cells (ISCs) may explain the apparent heterogeneity of colon cancer cell*





ALL

IMAGES

VIDEOS

25,500 Results

Any time ▼

## LGR5 positivity defines stem-like cells in colorectal cancer

<https://www.ncbi.nlm.nih.gov/pmc/articles/PMC3977143>

**LGR5** is overexpressed in **human CRC cell lines**. **LGR5 expression** is upregulated in primary **CRC samples** compared with normal **colorectal epithelium**. Using real-time qRT-PCR, we could show that **LGR5 expression** was also upregulated in **CRC cell lines Caco-2**, HT-29, SW480, SW620 and T84 (Figure 1A) (18,19).

Cited by: 145

Author: Daniela Hirsch, Nick Barker, Nicole McNe...

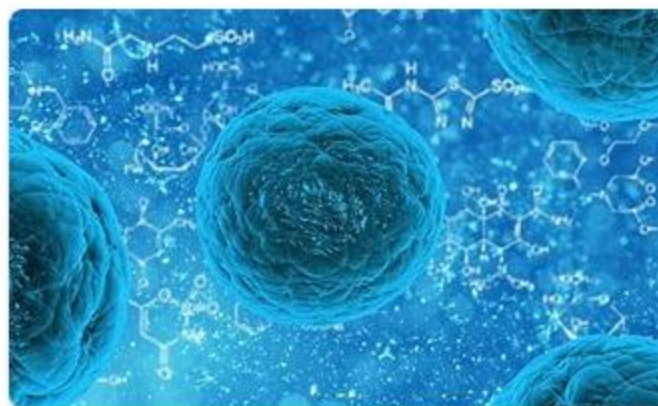
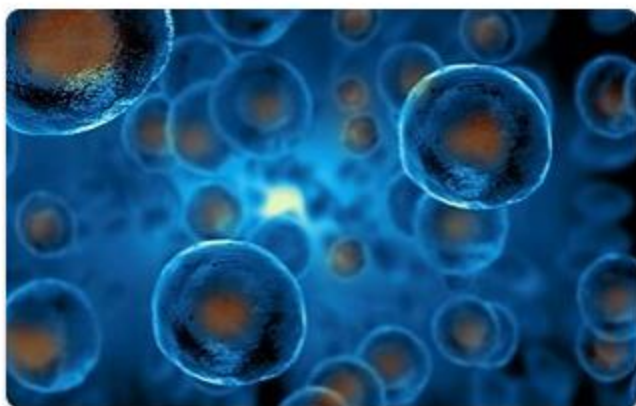
Publish Year: 2014

## LGR5 | Cancer Genetics Web

[www.cancerindex.org/geneweb//LGR5.htm](http://www.cancerindex.org/geneweb//LGR5.htm) ▼

Aug 31, 2019 · BACKGROUND: The **human** leucine-rich, repeat-containing G protein-coupled receptor 5 (**LGR5**) is a **stem cell** marker in numerous adult tissues and is overexpressed in a large number of **human** carcinoma including **colon cancer**, breast **cancer** and oral squamous **cell** carcinomas (OSCC). The role of the full length transcript (LGR5FL) in progression and ...

## Images of Lgr5 Marks Different Cancer Stem Cell Compartme...

[bing.com/images](http://bing.com/images)

See all images &gt;

## LGR5 positivity defines stem-like cells in colorectal cancer

<https://academic.oup.com/carcin/article/35/4/849/269003> ▼

Nov 26, 2013 · **LGR5** is overexpressed in **human CRC cell lines**. **LGR5 expression** is upregulated in primary **CRC samples** compared with normal **colorectal epithelium**. Using real-time qRT-PCR, we could show that **LGR5 expression** was also upregulated in **CRC cell lines Caco-2**, HT-29, SW480, SW620 and T84 (18, 19).



LGR5 marks different cancer stem cell compartments in human Ca



ALL

IMAGES

VIDEOS

24,700 Results

Any time ▼

## Visualization and targeting of LGR5 + human colon cancer ...

<https://nature.com/articles/nature22081?WT.feed...>

Mar 29, 2017 · **LGR5+ cells in human** colorectal **cancer** tissue xenografted into mice act as **cancer** stem **cells**, and differentiated **cancer cells** can revert to **cancer** stem **cells** and express **LGR5** aft...

**Cited by:** 296**Author:** Mariko Shimokawa, Yuki Ohta, Shingo ...**Publish Year:** 2017

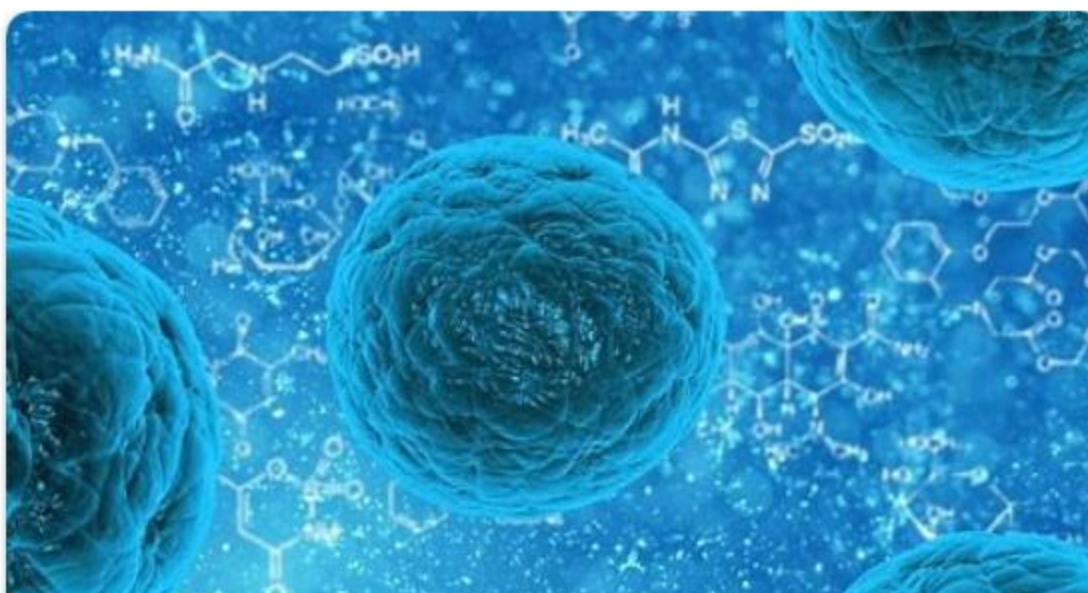
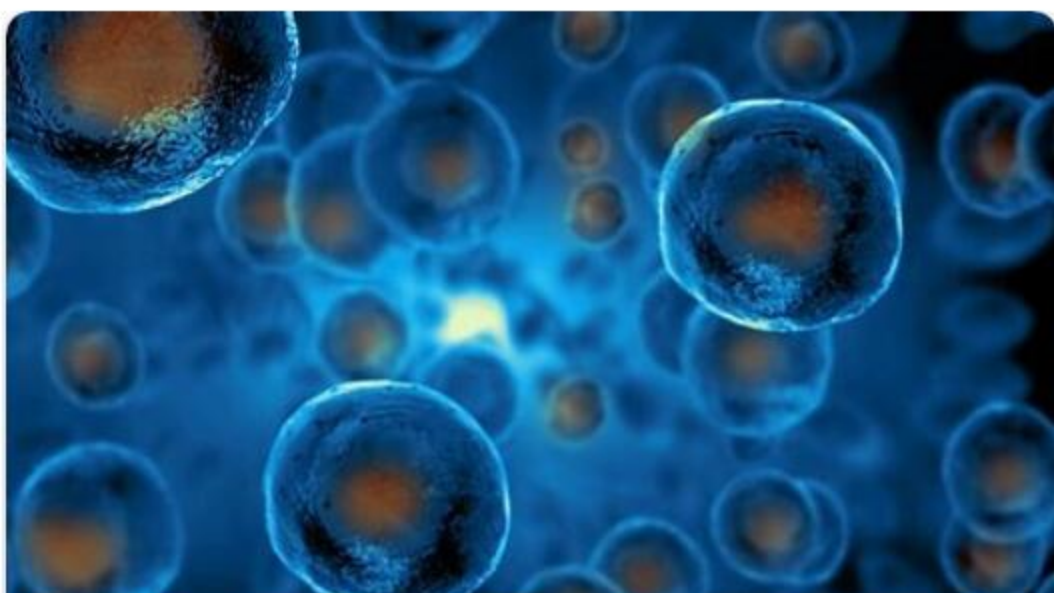
## LGR5 positivity defines stem-like cells in colorectal cancer

<https://academic.oup.com/carcin/article-abstract/35/4/849/269003> ▼

Nov 26, 2013 · **LGR5** is overexpressed in **human CRC cell lines**. **LGR5** expression is upregulated in primary **CRC** samples **compared with** normal colorectal epithelium . Using real-time qRT-PCR, w...

**Cited by:** 144**Author:** Daniela Hirsch, Nick Barker, Nicole Mc...**Publish Year:** 2014

## Images of Lgr5 Marks Different Cancer Stem cell Compartments i...

<bing.com/images>



ALL

IMAGES

VIDEOS

MAPS

NEWS

SHOPPING

23,700 Results

Any time ▾

Open links in new tab



## LGR5 positivity defines stem-like cells in colorectal cancer

<https://academic.oup.com/carcin/article/35/4/849/269003> ▾

Nov 26, 2013 · **LGR5** is overexpressed in **human CRC cell lines**. **LGR5 expression** is upregulated in primary **CRC samples** compared with normal **colorectal epithelium**. Using real-time qRT-PCR, we could show that **LGR5 expression** was also upregulated in **CRC cell lines Caco-2**, HT-29, SW480, SW620 and T84 (18, 19).

**Cited by:** 145**Author:** Daniela Hirsch, Nick Barker, Nicole Mc...**Publish Year:** 2014

## Visualization and targeting of LGR5 + human colon cancer ...

<https://nature.com/articles/nature22081?WT.feed...>

Mar 29, 2017 · **LGR5+ cells in human** colorectal **cancer** tissue xenografted into mice act as **cancer stem cells**, and differentiated **cancer cells** can revert to **cancer stem cells** and express **LGR5** after ablation of ...

**Cited by:** 318**Author:** Mariko Shimokawa, Yuki Ohta, Shingo ...**Publish Year:** 2017

## Lgr5 and Lgr6 as markers to study adult stem cell roles in ...

<https://www.nature.com/articles/onc2011479>

Oct 17, 2011 · In cultured **human colon cancer** cell-lines, **Lgr5** depletion was recently reported to enhance Wnt signaling, drive EMT and promote tumorigenesis (Walker et al., 2011). It remains to be established if ...

**Cited by:** 122**Author:** M Leushacke, N Barker**Publish Year:** 2012

## Lgr5 in cancer biology: functional identification of Lgr5 ...

<https://stemcellres.biomedcentral.com/articles/10.1186/s13287-019-1288-8> ▾

Jul 29, 2019 · **Cancer** remains one of the leading lethal diseases worldwide. Identifying biomarkers of cancers might provide insights into the strategies for the development of novel targeted anti-**cancer** therapies. Leucine-rich repeat-containing G protein-coupled receptor 5 (**Lgr5**) has been recently discovered as a candidate marker of **cancer** stem cell populations.

**Cited by:** 10**Author:** Bingbin Li, Xu Wang, Jiahua Wang, W...