

Match Overview

1	Crossref 48 words Lucy Ireland, Teifion Lockett, Michael C. Schmid, Ainhua Mielgo. "Blockade of Stromal Gas6 Alters Cancer Cell F...	1%
2	Internet 43 words crawled on 08-Dec-2020 www.mdpi.com	1%
3	Crossref 41 words P Santos, D Murtinho, AS Pires Lourenço, J Araújo, R Martins, AM Abrantes, MF Botelho, MES Serra. "PO-416 Cyt	1%
4	Crossref 32 words Cancer Immunotherapy , 2013.	1%
5	Crossref 30 words Xu, Zhihong. "Pancreatic cancer and its stroma: A conspiracy theory", World Journal of Gastroenterology , 2014.	<1%
6	Internet 30 words crawled on 06-Dec-2020 worldwidescience.org	<1%
7	Crossref 22 words J. C. Yoon. "Cell-to-Cell Contact with Hepatitis C Virus-I...ected Cells Reduces Functional Capacity of Natural Killer	<1%
8	Crossref 21 words Rouce, Rayne H, Hila Shaim, Takuya Sekine, Gerrit Weber, Brandon Ballard, Stephanie Ku, Cecilia Barese, Vineet	<1%

Name of Journal: *World Journal of Gastroenterology*

Manuscript NO: 63639

Manuscript Type: REVIEW

Natural killer cells in pancreatic cancer stroma

Fincham REA *et al.* Natural killer cells in PDAC

Rachel Elizabeth Ann Fincham, Francesca Romana DelVecchio, Michelle R Goulart, Joe Poe Sheng Yeong, Hemant M Kocher

Abstract

Pancreatic cancer remains one of medicine's largest areas of unmet need. With five-year survival rates of < 8%, little improvement has been made in the last 50 years. Typically presenting with advance stage disease, treatment options are limited. To date, surgery remains the only potentially curative option, however, with such late disease presentation, the majority of patients are unresectable. Thus, new therapeutic options

1,930,000 ResultsAny time

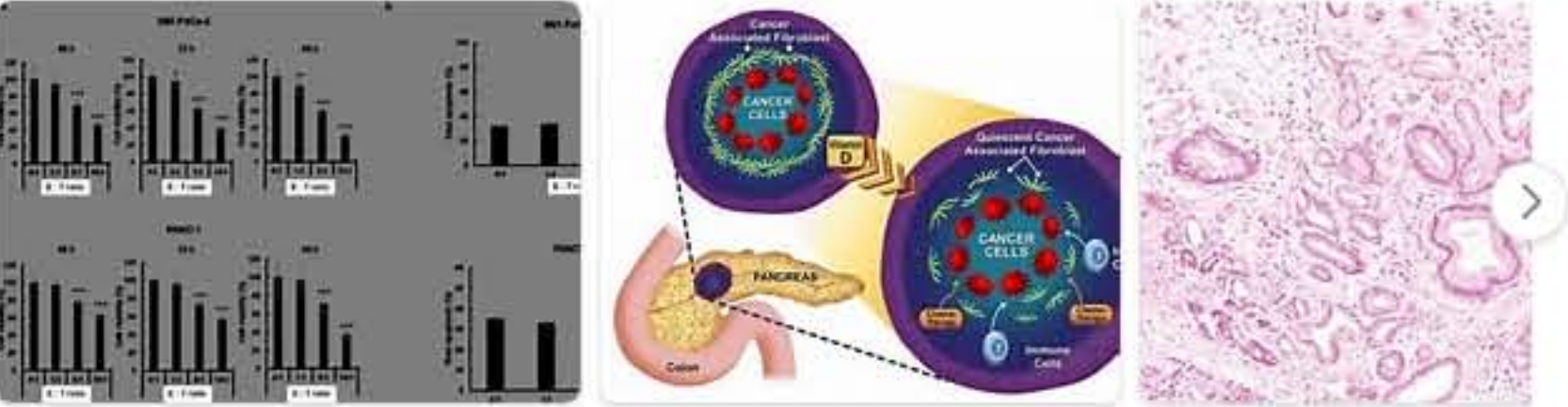
Stromal biology and therapy in pancreatic cancer: ready ...
<https://pubmed.ncbi.nlm.nih.gov/30177543>

7 Lustgarten Foundation Designated **Pancreatic Cancer** Research Lab at Cold Spring Harbor Laboratory, New York, USA. PMID: 30177543 DOI: 10.1136/gutjnl-2018-316451 Abstract ... **Stromal Cells** / pathology* Translational Medical Research Tumor Microenvironment / physiology* ...
Cited by: 118 Author: Albrecht Neesse, Christian Alexander Baue...
Publish Year: 2019

The Immune Microenvironment in Pancreatic Cancer
<https://pubmed.ncbi.nlm.nih.gov/33022971>

The biology of solid tumors is strongly determined by the interactions of **cancer cells** with their surrounding microenvironment. In this regard, **pancreatic cancer** (**pancreatic** ductal adenocarcinoma, PDAC) represents a paradigmatic example for the multitude of possible tumor-**stroma** interactions.
Cited by: 11 Author: Magdalena Huber, Corinna U Brehm, Thom...
Publish Year: 2020

Images of natural killer cells in Pancreatic cancer stroma
<bing.com/images>



See all images

Stromal biology and therapy in pancreatic cancer | Gut
<https://gut.bmj.com/content/60/6/861>

Jun 01, 2011 · Therapeutic targeting of **stromal cells** decreased the **stroma** from **pancreatic** tumours, resulting in increased intratumoral perfusion and therapeutic delivery of gemcitabine. **Stromal cells** contained within the PDA tumour microenvironment therefore represent an additional constituent to neoplastic cells that should be critically evaluated for optimal therapeutic development in preclinical ...
Cited by: 681 Author: Albrecht Neesse, Patrick Michl, Kristopher ...
Publish Year: 2011 Estimated Reading Time: 15 mins

(PDF) The desmoplastic stroma of pancreatic cancer is a ...
<https://www.researchgate.net/publication/260109475...>

CD8 (+) T cells located in the proximity of **malignant lesions** are associated with a survival advantage, suggesting the existence of immunoeediting. **Pancreatic stellate cells** appear to dictate the...

Natural killer cells and their therapeutic role in ...
<https://www.sciencedirect.com/science/article/pii/S0163725818300664>

Sep 01, 2018 · Natural Killer (NK) cells are gaining more and more interest as a highly attractive target for cancer immunotherapies, both as pharmaceutical target and for cell therapies. In this systematic review we summarise the pathophysiological adaptations of **NK cells** in pancreatic cancer and highlight possible (future) therapeutic NK cell-related targets.
Cited by: 16 Author: Jonas R.M. Van Audenaerde, Jonas R.M. V...
Publish Year: 2018

PEOPLE ALSO ASK

- What is stromal modifying agent for pancreatic cancer?
- What kind of Stroma is found in pancreatic cancer?
- Are there NK cell therapies for pancreatic cancer?
- What is the treatment for metastatic pancreatic cancer?

Feedback

Pancreatic cancer stroma: an update on therapeutic ...
<https://www.nature.com/articles/s41575-020-0300-1>

May 11, 2020 · **Pancreatic cancer cells** induce a desmoplastic response within the **tumour stroma** by stimulating **stromal fibroblasts** to upregulate the expression of collagen family proteins and ...
Cited by: 56 Author: Abdel N. Hosein, Abdel N. Hosein, Rolf A. B...
Publish Year: 2020

Loss of natural killer T cells promotes pancreatic cancer ...
<https://onlinelibrary.wiley.com/doi/full/10.1111/imm.12746>

Apr 18, 2017 · Graphical representation of loss of **natural killer T (NKT) cells** leads to up regulation of inflammatory markers mPGES-1/5-LOX in M2 macrophages and aggravate progression of **pancreatic cancer** and inhibition of mPGES-1/5-LOX leads to inhibition of **pancreatic intraepithelial neoplasia** (PanIN) lesions and, eventually, results in inhibition of pancreatic cancer.
Cited by: 25 Author: Naveena B. Janakiram, Altaf Mohammed, T...
Publish Year: 2017

Frontiers | Blockade of Stromal Gas6 Alters Cancer Cell ...
<https://www.frontiersin.org/articles/10.3389/fimmu.2020.00297>

Feb 27, 2020 · Department of Molecular and Clinical **Cancer** Medicine, University of Liverpool, Liverpool, United Kingdom. **Pancreatic** ductal adenocarcinoma (PDA) is one of the deadliest cancers due to its aggressive and metastatic nature. PDA is characterized by a rich tumor **stroma** with abundant macrophages, fibroblasts, and collagen deposition that can represent up to 90% of the tumor mass.
Cited by: 8 Author: Lucy Ireland, Teifion Luckett, Michael C. Sc...
Publish Year: 2020

Advances in Pancreatic Cancer Research - National Cancer ...
<https://www.cancer.gov/types/pancreatic/research>

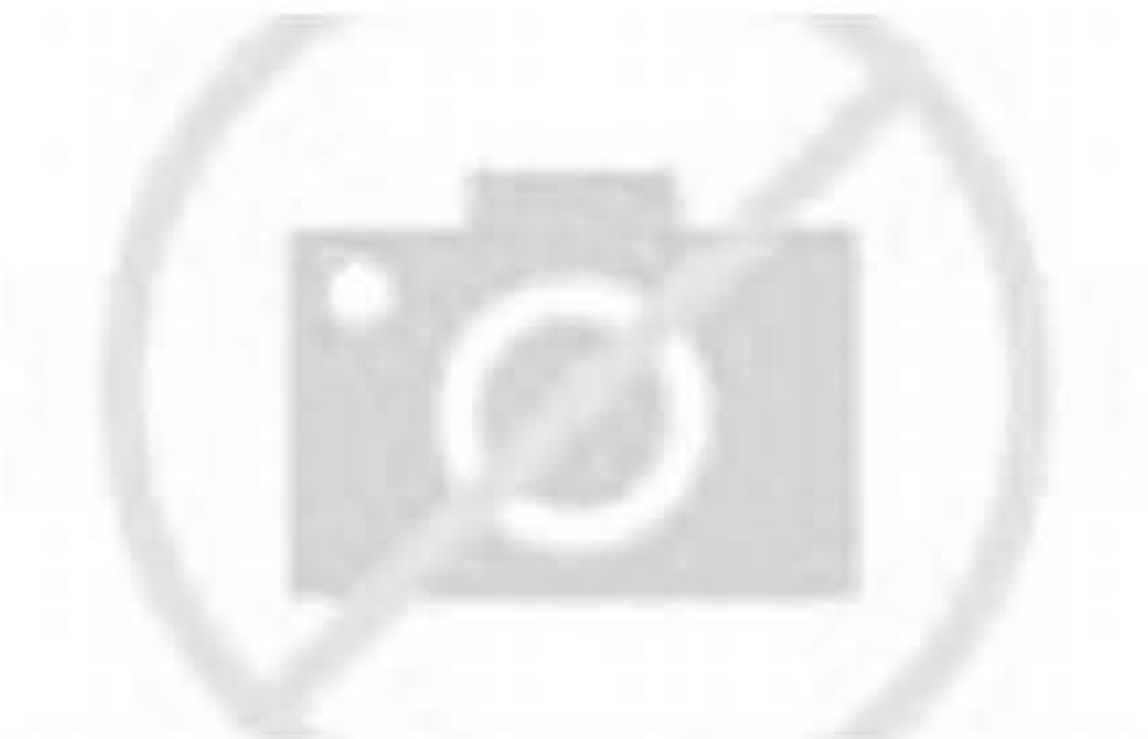
NK cells are a type of white blood cell that can kill tumor cells or cells infected with a virus. **NK cell** therapies for **pancreatic cancer** are being tested in early-stage clinical trials. Clinical Trials. Because of the complex nature of **pancreatic cancer**, many experts believe it's important for all patients to join a clinical trial, even if ...

Related searches for Natural killer cells in pancreatic cancer stroma

- pancreatic cancer stroma
- stroma in a cell
- stroma in plant cell
- tumor stroma definition

Pancreatic Cancer

Medical Condition



Cancer of pancreas, an organ which is behind the lower part of the stomach. This causes abdominal pain, jaundice, itchy skin, fatigue and weight loss.

- Rare (Fewer than 200,000 cases per year in US)
- Often requires lab test or imaging
- Treatable by a medical professional
- Can last several months or years

The exact cause of pancreatic cancer is unknown. Risk factors include diabetes, chronic pancreatitis and stomach ulcer. In the early stage, it is asymptomatic. Common symptoms at later stages are weight loss and abdominal pain. Treatment depends on the location of tumor, age and general health. Treatment includes surgery, chemotherapy and radiation.

Symptoms

Early stage of pancreatic cancer may be asymptomatic. Symptoms will show up only when the disease progresses and include:

- Digestive problems, including abnormal stools, nausea or vomiting
- Pain in the upper abdomen and back
- Loss of appetite
- Sudden weight Loss
- Jaundice (yellowing of the skin and whites of the eyes)
- Very high sugar levels in diabetic patients

Treatments

Treatment depends on the location of tumor, age and general health. Treatment includes surgery, chemotherapy and radiation.

Medication

- Chemotherapy: Drugs, either taken orally or through injection, kills the cancer cells. In advanced stages, it only helps control growth of cancer cells.
5-Fluorouracil · Capecitabine · Irinotecan · Oxaliplatin

Medical procedures: Tumor excision · Distal pancreatectomy · Total pancreatectomy

Therapies: Radiation therapy

People also search for

- Colon Cancer
- Pancreatitis, Chronic
- Pancreatitis
- Cancer
- Jaundice
- See more

Data from Focus Medica. Reviewed by a panel of doctors [Learn more](#)
Consult a medical professional for advice

Suggest an edit

Search Tools

Turn off Hover Translation (关闭取词)

ALL IMAGES VIDEOS MAPS NEWS SHOPPING

3,150,000 Results Any time

Pancreatic cancer stroma: an update on therapeutic ...
<https://pubmed.ncbi.nlm.nih.gov/32393771>

Pancreatic ductal adenocarcinoma (PDAC) is a leading cause of cancer-related mortality in the Western world with limited therapeutic options and dismal long-term survival. The neoplastic epithelium exists...

Cited by: 56 Author: Abdel N. Hosein, Abdel N. Hosein, Rolf A. B...
Publish Year: 2020

Stromal biology and therapy in pancreatic cancer | Gut
<https://gut.bmj.com/content/60/6/861>

Jun 01, 2011 · Therapeutic targeting of stromal cells decreased the stroma from pancreatic tumours, resulting in increased intratumoral perfusion and therapeutic delivery of gemcitabine. Stromal cells...

Cited by: 681 Author: Albrecht Neesse, Patrick Michl, Kristopher ...
Publish Year: 2011 Estimated Reading Time: 15 mins

PEOPLE ALSO ASK

- What is stromal modifying agent for pancreatic cancer?
- What kind of Stroma is found in pancreatic cancer?
- What is the treatment for metastatic pancreatic cancer?
- Are there NK cell therapies for pancreatic cancer?

Feedback

The Immune Microenvironment in Pancreatic Cancer
<https://pubmed.ncbi.nlm.nih.gov/33022971>

The biology of solid tumors is strongly determined by the interactions of cancer cells with their surrounding microenvironment. In this regard, pancreatic cancer (pancreatic ductal adenocarcinoma,...

Cited by: 11 Author: Magdalena Huber, Corinna U Brehm, Thom...
Publish Year: 2020

Natural killer cells and their therapeutic role in ...

Pancreatic Cancer
Medical Condition



Cancer of pancreas, an organ which is behind the lower part of the stomach. This causes abdominal pain, jaundice, itchy skin, fatigue and weight loss.

- Rare (Fewer than 200,000 cases per year in US)
- Often requires lab test or imaging
- Treatable by a medical professional
- Can last several months or years

The exact cause of pancreatic cancer is unknown. Risk factors include diabetes, chronic pancreatitis and stomach ulcer. In the early stage, it is asymptomatic. Common symptoms at later stages are weight loss and abdominal pain. Treatment depends on the location of tumor, age and general health. Treatment includes surgery, chemotherapy and radiation.

Symptoms

Early stage of pancreatic cancer may be asymptomatic. Symptoms will show up only when the disease progresses and include: