

1 / 35

12

Name of Journal: *World Journal of Diabetes*

Manuscript NO: 54531

Manuscript Type: ORIGINAL ARTICLE

*Observational Study*

Access to insulin delivery devices and glycated haemoglobin in lower-income countries

Emma Louise Klatman, Graham David Ogle

Abstract

BACKGROUND

## Match Overview

1

**Crossref** 92 words

Emma Louise Klatman, Martin McKee, Graham David Ogle. "Documenting and visualising progress towards Univers

1%

2

**Crossref** 74 words

Emma L. Klatman, Stephane Besancon, Silver Bahendeka, Mary Mayige, Graham D. Ogle. "COVID-19 and Type 1 D ...

1%

3

**Internet** 70 words

crawled on 11-Jun-2020  
[link.springer.com](https://link.springer.com)

1%

4

**Internet** 63 words

crawled on 04-Jun-2020  
[www.ajmc.com](https://www.ajmc.com)

1%

5

**Internet** 51 words

crawled on 12-Sep-2019  
[www.oncotarget.com](https://www.oncotarget.com)

1%

6

**Internet** 47 words

crawled on 01-Jun-2020  
[bmchealthservres.biomedcentral.com](https://bmchealthservres.biomedcentral.com)

1%

+ 2.5KJs

+ 16.2KJs

66%



Access to insulin delivery devices and HbA1c testing for young



ALL

IMAGES

VIDEOS

关闭取词

17,600 Results

Any time ▼

## Improving patient self-care using diabetes technologies

<https://www.ncbi.nlm.nih.gov/pmc/articles/PMC6351708>

Jan 28, 2019 · **Shengsheng** and **colleagues**, reported an estimated resource waste of US\$72,648 to \$220,289, and \$5,675 to \$21,775 for every 100 patients initiating CGM, for nonadherence and early discontinuation respectively. 16 These results suggest the need for tailored approaches to **individualize diabetes therapy** to achieve an optimal use of **diabetes technologies** and devices.

Cited by: 2

Author: Valeria Alcántara-Aragón

Publish Year: 2019

## Levels of type 1 diabetes care in children and adolescents ...

<https://onlinelibrary.wiley.com/doi/full/10.1111/pedi.12801>

Nov 23, 2018 · The key components of intermediate care are **human insulin** in a **basal bolus regimen**, **SMBG**, **point-of-care HbA1c testing**, **diabetes education**, **basic complications screening**, and **access to a doctor** and **nurse** experienced in T1D care in young people.

Cited by: 3

Author: Graham D. Ogle, Julia E. von Oettingen, ...

Publish Year: 2018

## Using the Novel Approach of an Artificial Pancreas to ...

<https://www.emjreviews.com/diabetes/article/using-the-novel-approach-of-an-artificial...> ▼

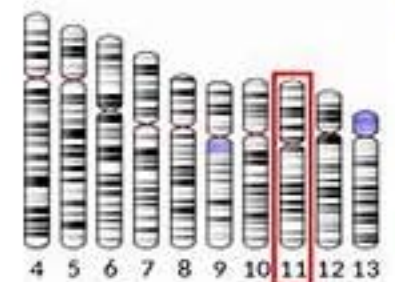
Closed-Loop **Insulin Delivery Device** (Artificial Pancreas) The closed-loop **insulin delivery device**, or artificial pancreas (AP), is an automated **insulin delivery** system comprised of a CGM, a CSII, and an algorithm that amalgamates real-time information from the CGM to adjust **insulin delivery** ...

## Navigating Two Roads to Glucose Normalization in Diabetes ...

<https://www.sciencedirect.com/science/article/pii/S1550413119300713>

## Insulin

Hormone



Wikipedia

**May treat:** Type 2 Diabetes  
Hyperglycaemia (High Blood Sugar)

**Possible side effect:** A

**Legal status:** Prescript

**Brand name:** Exubera

**Pregnancy risk category:**  
Category C (FDA)

**Trivia:** On January 23, 2010, the first synthetic insulin was produced with insulin, a new drug

## Related people





Access to insulin delivery devices and glycated haemoglobin in low



ALL

IMAGES

VIDEOS

19,300 Results

Any time ▾

## [Assessment of Insulin Injection Practice of Nurses Working ...](#)

<https://www.ncbi.nlm.nih.gov/pmc/articles/PMC6093053>

Aug 01, 2018 · Self-administered questionnaire was developed to **assess insulin injection practice** of nurses through **insulin pen** and was based on new **insulin delivery recommendation** . The recommendations were transformed into questions taking into account the current circumstances in which the questions were to be applied such as unavailability of 4 mm needle which does not require skin lifting and mandatory site cleaning because we were assessing the **insulin injection practice** ...

**Author:** Shital Adhikari, Ramesh Sharma Pou... **Publish Year:** 2018

## [Observational Study of Once-Daily Insulin Detemir in ...](#)

<https://www.ncbi.nlm.nih.gov/pmc/articles/PMC3574560>

Table 3 shows the **insulin devices** used and the time taken to **train patients** how to self-inject and self-adjust, as well as to attend to other parameters related to **insulin detemir treatment**, according to age subgroup. In general, the FlexPen ® was the most commonly used **insulin delivery device**, irrespective of patient age. The total time taken by physicians and their staff to **train older patients** to self-inject ...

**Cited by:** 9

**Author:** Eddy Karnieli, Florian M. M. Baeres, Grze...

**Publish Year:** 2013





Access to insulin delivery devices and glycated haemogl



ALL

IMAGES

VIDEOS

MAPS

NEWS

SHOPPING

19,500 Results

Any time ▾

## [Assessment of Insulin Injection Practice of Nurses Working ...](#)

<https://www.ncbi.nlm.nih.gov/pmc/articles/PMC6093053>

Aug 01, 2018 · 1. Introduction. Diabetes mellitus (DM) affects 425 million people worldwide and about three-quarters of them live in low- and middle-income **countries** [].Prevalence of diabetes in Nepal is between 4.1% and 9.5% [], with urban areas reporting higher prevalence rates [].Appropriate glycemic control is necessary for improving clinical outcomes and reducing mortality in hospitalized patients [].

**Author:** Shital Adhikari, Ramesh Sharma Pou...

**Publish Year:** 2018

## [\[PDF\] Use of Glycated Haemoglobin \(HbA1c\) in the Diagnosis of ...](#)

[https://www.who.int/cardiovascular\\_diseases/report-hba1c\\_2011\\_edited.pdf](https://www.who.int/cardiovascular_diseases/report-hba1c_2011_edited.pdf)

defects in **insulin** secretion, **insulin** action, or both (1). The long-term relatively ... and feasibility and resource implications for low and middle-income **countries**. The strength of the recommendation is rated on a two-point scale: • Weak/conditional : low/moderate/high quality of evidence and/or not ... **Glycated haemoglobin** (HbA1c) was ...

## [Glycated Hemoglobin \(HbA1c\): Clinical Applications of a ...](#)

<https://www.ncbi.nlm.nih.gov/pmc/articles/PMC5037982>

Jul 16, 2016 · 1. BACKGROUND. The **glycated** hemoglobin (HbA1c) has been established as a time-honored gold standard yardstick of long-term glycemic control. Highly precise state-of-the-art biochemical HbA1c assays in the era of the National Glycohemoglobin Standardization Program (NGSP) certification as a standard of care allow clinicians to judge glycemic control, make treatment decisions and ...

**Cited by:** 1

**Author:** Melvin Khee Shing Leow

**Publish Year:** 2016

### PEOPLE ALSO ASK

How is glycated haemoglobin diagnosed? ▾

... diabetes mellitus immunoassay? ▾