

Name of Journal: World Journal of Diabetes

Manuscript NO: 63566

Manuscript Type: REVIEW

Mechanisms of altered bone remodeling in children with type 1 diabetes

Brunetti G *et al.* Altered bone remodeling in children with type-1-diabetes

Giacomina Brunetti, Gabriele D'Amato, Stefania De Santis, Maria Grano, Maria Felicia Faienza

Abstract

Bone loss associated with type 1 diabetes mellitus (T1DM) begins at the onset of the disease, already in childhood, determining a lower bone mass peak and hence a greater risk of osteoporosis and fractures later in life. The mechanisms underlying diabetic bone

remodeling are not yet completely understood. Hyperandrogenic and insulin deficiency are

Match Overview

1	Internet 133 words crawled on 03-Oct-2020 www.wjgnet.com	3%
2	Crossref 116 words Marta Gomarasca, Giuseppe Banfi, Giovanni Lombardi, ... "Myokines: The endocrine coupling of skeletal muscle an	3%
3	Crossref 83 words Manish Raisingani, Brar Preneet, Brenda Kohn, Shoshan a Yakar. "Skeletal growth and bone mineral acquisition i	2%
4	Internet 66 words crawled on 18-Oct-2020 www.hindawi.com	2%
5	Crossref 63 words Jiazhi Yang, Sixu Chen, Zhaowen Zong, Lei Yang, Daoch eng Liu, Quanwei Bao, Wenqiong Du. "The increase in bo	2%
6	Internet 56 words crawled on 17-Jul-2020 www.e-sciencecentral.org	1%
7	Internet 50 words crawled on 19-Aug-2020 www.dovepress.com	1%

MECHANISMS OF ALTERED BONE REMODELING IN CHILDREN WIT



ALL

IMAGES

VIDEOS

Add the Give

1,030,000 Results

Any time ▾

[Mechanisms of diabetes mellitus-induced bone fragility...](#)

<https://www.nature.com/articles/nrendo.2016.153>

Sep 23, 2016 · The pathophysiological mechanisms underlying bone fragility in diabetes mellitus are complex, and include **hyperglycaemia**, **oxidative stress** and the **accumulation of advanced glycation** endproducts...

Cited by: 266

Author: Nicola Napoli, Nicola Napoli, Manju C...

Publish Year: 2017

[Mechanisms of diabetes mellitus-induced bone fragility](#)

<https://pubmed.ncbi.nlm.nih.gov/27658727>

The pathophysiological mechanisms underlying bone fragility in diabetes mellitus are complex

Search Toc

Turn off Hover

Mechanisms of altered bone remodeling in children with type 1 diat



ALL

IMAGES

VIDEOS

1,120,000 Results

Any time ▼

Mechanisms of diabetes mellitus-induced bone fragility

<https://pubmed.ncbi.nlm.nih.gov/27658727>

The pathophysiological mechanisms underlying bone fragility in diabetes mellitus are complex, and include **hyperglycaemia**, oxidative stress and the accumulation of advanced glycation endproducts that compromise collagen properties, increase marrow adiposity, release inflammatory factors and adipokines from visceral fat, and potentially alter the function of osteocytes.

Cited by: 359

Author: Nicola Napoli, Nicola Napoli, Manju Chandr...

Publish Year: 2017

Decreased bone turnover in children and adolescents with ...

<https://www.ncbi.nlm.nih.gov/pubmed/20857842>

Decreased **bone** turnover **in children** and adolescents with well controlled **type 1 diabetes**. Maggio AB(1), Ferrari S, Kraenzlin M, Marchand LM, Schwitzgebel V, Beghetti M, Rizzoli R, Farpour-Lambert NJ. Author information: (1)Pediatric Cardiology Unit, Department of Child and Adolescent, University Hospitals of Geneva and University of Geneva ...

Cited by: 65

Author: Albane Bertha Maggio, Serge Livio Ferrari, ...

Publish Year: 2010

Search Tools

[Turn on Hover Translation \(开启取词\)](#)

Images of Mechanisms of Altered Bone Remodeling in Children Wi...

<bing.com/images>

ALL

IMAGES

VIDEOS

MAPS

NEWS

SHOPPING

1,810,000 Results

Any time ▾

Mechanisms of diabetes mellitus-induced bone fragility

<https://pubmed.ncbi.nlm.nih.gov/27658727>

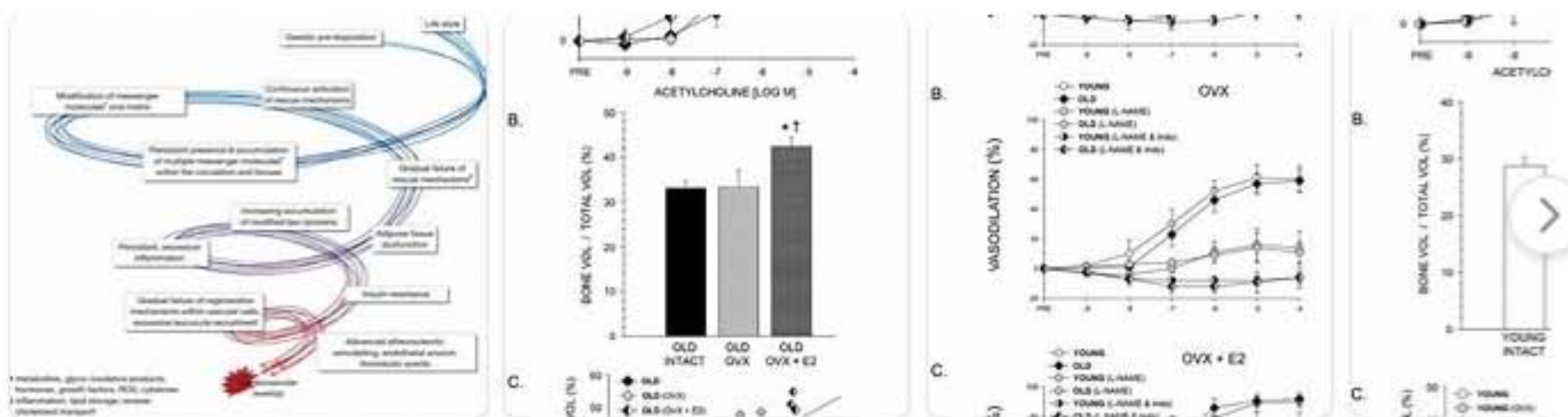
The pathophysiological mechanisms underlying bone fragility in diabetes mellitus are complex, and include **hyperglycaemia**, oxidative stress and the accumulation of advanced glycation endproducts that compromise collagen properties, increase marrow adiposity, release inflammatory factors and adipokines from visceral fat, and potentially alter the function of osteocytes.

Cited by: 359

Author: Nicola Napoli, Nicola Napoli, Manju Chandr...

Publish Year: 2017

Images of Mechanisms of Altered Bone Remodeling in Children Wi... [bing.com/images](https://www.bing.com/images)


[See all images >](#)

Decreased bone turnover in children and adolescents with ...

<https://www.ncbi.nlm.nih.gov/pubmed/20857842>

AIM: Osteoporosis is a common long-term complication of **type 1 diabetes** (T1DM). We aimed to determine whether **bone** mineral density (BMD) and turnover are already **altered** during childhood. PATIENTS AND METHODS: We recruited 27 T1DM **children** and 32 controls (age 10.5 +/- 2.5 yr.) and measured BMD (dual-energy x-ray absorptiometry); **bone** ...

Cited by: 65

Author: Albane Bertha Maggio, Serge Livio Ferrari, ...

Publish Year: 2010