

Dear Editor

We performed follow-up of patients at the Prosthetic Dental Clinic in Dental Faculty Hospital of Dicle University. Because our hospital is a government-affiliated institution, we keep the clinical trials of patients in the hospital's patient registry database. As proof of these records, we provided you with the protocol numbers and the signed approvals of the unit supervisors in the following pdf file. (Clinical Trial Registration Statement, Conflict-of-interest\_statement-37581, patient follow-up chart, Patient registration proof)

By far the most accurate approach was to create a record of your work in the WHO International Clinical Trials Registry Platform (ICTRP) or ClinicalTrials.gov, as you can tell. It is unlikely that a completed follow-up study will be recorded in these organizations.

However, there is a spelling mistake In First page of Review Manuscript. Buket instead of Emrah, Pedodontics should be written instead of Prosthodontics.

Emrah Buket Ayna, Sema Çelenk Department of Prosthodontics Pedodontics, Faculty of Dentistry, Dicle University, Diyarbakır 21280, Turkey. And, All corrections which you wanted me were written with green colour in 37581-Review 1 doc.

Best regards,

Mehmet Cudi Tuncer, Professor,MD,PhD (Corresponding author)

T.C.  
DİCLE ÜNİVERSİTESİ  
DİŞ HEKİMLİĞİ FAKÜLTESİ  
ETİK KURUL

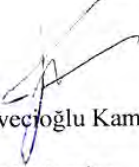
Sayı : D.Ü.D.F.E.K2009/27  
Konu: Doç.Dr.Emrah AYNA hk.

REPUBLIC OF TURKEY  
DICLE UNIVERSITY  
DENTAL FACULTY  
ETHICAL COMMITTEE

Associated Prof Dr Emrah Ayna and colleague's Project entitled "Comparison of clinical survivals of two different tooth-coloured post systems which restored by direct composite restorations" was accepted by Dicle University Dental Faculty Ethical Committee.



Prof. Dr. Gülten Ünlü  
President  
Department of Maxillofacial surgery



Prof. Dr. Jalen Devecioğlu Kama  
Vice President  
Department of Orthodontics



Prof. Dr. Köksal Beydemir  
Member  
Department of Prosthodontics



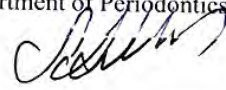
Associated Prof. İzzet Yavuz  
Member  
Department of Pedodontics



Assistant Prof. Ahmet Dağ  
Member  
Department of Periodontics



Assistant Prof. Mehmet Çolak  
Member  
Department of Oral Diagnosis and Radiology



Assistant Prof. Şadullah Kaya  
Member  
Department of Conservative Dentistry

Zircon	surface stain				color stability				loss of retention of the post or the composite build- up material				marginal leakage and integrity				periapical lesion			
Teeth	Months				Months				Months				Months				Months			
	6	12	24	36	6	12	24	36	6	12	24	36	6	12	24	36	6	12	24	36
1	A	A	A	A	A	A	A	A	A	A	A	A	A	A	A	A	A	A	A	A
2	A	A	A	A	A	A	A	A	A	A	A	A	A	A	A	A	A	A	A	A
3	A	A	A	A	A	A	A	A	A	A	A	A	A	A	A	A	A	A	A	A
4	A	A	A	A	A	A	A	A	A	A	A	A	A	A	A	A	A	A	A	A
5	A	A	A	A	A	A	A	A	A	A	A	A	A	A	A	A	A	A	A	A
6	A	A	A	A	A	A	A	A	A	A	A	A	A	A	A	A	A	A	A	A
7	A	A	A	A	A	A	A	A	A	A	A	A	A	A	A	A	A	A	A	A
8	A	A	A	A	A	A	A	A	A	A	A	A	A	A	A	A	A	A	A	A
9	A	A	A	A	A	A	A	A	A	A	A	A	A	A	A	B	A	A	B	B
10	A	A	A	B	A	A	A	B	A	A	A	B	A	A	B	B	A	A	B	B
11	A	A	A	A	A	A	A	A	A	A	A	A	A	A	A	A	A	A	A	A
12	A	A	A	A	A	A	A	A	A	A	A	A	A	A	A	A	A	A	A	A
13	A	A	A	A	A	A	A	A	A	A	A	A	A	A	A	A	A	A	A	A
14	A	B	B	B	A	B	B	B	B	B	B	B	B	B	B	B	A	B	C	C
15	A	A	A	A	A	A	A	A	A	A	A	A	A	A	A	A	A	A	A	A
16	A	A	A	A	A	A	A	A	A	A	A	A	A	A	A	A	A	A	A	A
17	A	A	B	B	A	A	A	A	A	A	B	B	A	B	B	B	A	B	B	B
18	A	B	B	B	A	B	B	B	A	B	B	B	B	B	B	B	B	C	C	C
19	A	A	B	B	A	A	B	B	A	B	B	B	A	B	B	B	A	B	C	C
20	A	A	A	A	A	A	A	A	A	A	A	A	A	A	A	A	A	A	A	A
21	A	A	A	A	A	A	A	A	A	A	A	A	A	A	A	A	A	A	A	A
22	A	A	A	A	A	A	A	A	A	A	A	A	A	A	A	A	A	A	A	A
23	A	A	A	A	A	A	A	A	A	A	A	A	A	A	A	A	A	A	A	A
24	A	A	A	A	A	A	A	A	A	A	A	A	A	A	A	A	A	A	A	A
25	A	A	A	A	A	A	A	A	A	A	A	A	A	A	A	B	A	A	B	B
26	A	A	A	A	A	A	A	A	A	A	A	A	A	A	A	A	A	A	A	A
27	A	A	A	A	A	A	A	A	A	A	A	A	A	A	A	A	A	A	A	A
28	A	A	A	A	A	A	A	A	A	A	A	A	A	A	A	A	A	A	A	A
29	A	A	A	A	A	A	A	A	A	A	A	A	A	A	A	A	A	A	A	A
30	A	A	A	A	A	A	A	A	A	A	A	A	A	A	A	A	A	A	A	A
31	A	A	A	A	A	A	A	A	A	A	A	A	A	A	B	B	A	A	B	B

Polyethylene	surface stain				color stability				loss of retention of the post or the composite build- up material				marginal leakage and integrity				periapical lesion			
Teeth	Months				Months				Months				Months				Months			
	6	12	24	36	6	12	24	36	6	12	24	36	6	12	24	36	6	12	24	36
1	A	A	A	A	A	A	A	A	A	A	A	A	A	A	A	A	A	A	A	A
2	A	A	A	A	A	A	A	A	A	A	A	A	A	A	A	A	A	A	A	A
3	A	A	A	A	A	A	A	A	A	A	A	A	A	A	A	A	A	A	A	A
4	A	A	B	B	A	B	B	B	A	B	B	B	B	B	B	B	A	B	C	C
5	A	B	B	B	A	B	B	B	B	B	B	B	B	B	B	B	A	B	C	C
6	A	A	A	A	A	A	A	A	A	A	A	A	A	A	A	A	A	A	A	A
7	A	A	A	A	A	A	A	A	A	A	A	A	A	A	A	A	A	A	A	A
8	A	A	A	A	A	A	A	A	A	A	A	A	A	A	A	A	A	A	A	A
9	A	A	A	A	A	A	A	A	A	A	A	A	A	A	A	A	A	A	A	A
10	A	A	A	A	A	A	A	A	A	A	A	A	A	A	A	A	A	A	A	A
11	A	A	A	A	A	A	A	A	A	A	A	A	A	A	A	A	A	A	A	A
12	A	A	A	B	A	A	A	B	A	A	A	A	A	A	B	B	A	A	B	B
13	A	A	A	A	A	A	A	A	A	A	A	A	A	A	A	A	A	A	A	A
14	A	A	A	A	A	A	A	A	A	A	A	A	A	A	A	A	A	A	A	A
15	A	B	B	B	A	B	B	B	B	B	B	B	B	B	B	B	A	B	C	C
16	A	A	A	A	A	A	A	A	A	A	A	A	A	A	A	A	A	A	A	A
17	A	A	A	A	A	A	A	A	A	A	A	A	A	A	A	A	A	A	A	A
18	A	A	A	A	A	A	A	A	A	A	A	A	A	A	A	A	A	A	B	B
19	A	A	A	A	A	A	A	A	A	A	A	A	A	A	A	A	A	A	A	A
20	A	A	A	A	A	A	A	A	A	A	A	A	A	A	A	A	A	A	A	A
21	A	A	A	A	A	A	A	A	A	A	A	A	A	A	A	A	A	A	A	A
22	A	A	A	A	A	A	A	A	A	A	A	A	A	A	A	A	A	A	A	A
23	A	A	A	A	A	A	A	A	A	A	A	A	A	A	A	A	A	A	B	B
24	A	A	A	A	A	A	A	A	A	A	A	A	A	A	A	A	A	A	A	A
25	A	A	B	B	A	A	B	B	A	B	B	B	A	B	B	B	A	B	C	C
26	A	A	A	A	A	A	A	A	A	A	A	A	A	A	A	A	A	A	A	A
27	A	A	A	A	A	A	A	A	A	A	A	A	A	A	A	A	A	A	A	A
28	A	A	A	A	A	A	A	A	A	A	A	A	A	A	A	A	A	A	A	A
29	A	A	A	A	A	A	A	A	A	A	A	A	A	A	A	A	A	A	B	B
30	A	A	A	A	A	A	A	A	A	A	A	A	A	A	A	A	A	A	B	B
31	A	A	A	A	A	A	A	A	A	A	A	A	A	A	A	A	A	A	A	A

Prof.Dr. Emrah Ayna

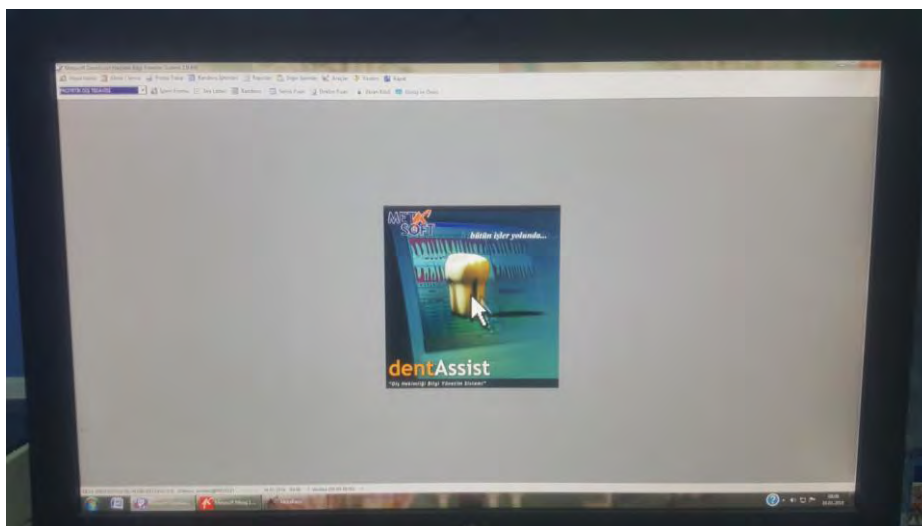
Patients records of “Comparison of the clinical efficacy of two different types of post systems which were restored with composite restorations”

Pro-3258/2010-2013 Name- Surname	Registration number	Age	Gender	Tooth number	Post Materials
[REDACTED]	3258/1	21	F	11-21	R-R
[REDACTED]	3258/2	15	F	11-21	R-R
[REDACTED]	3258/3	17	M	11-21	R-R
[REDACTED]	3258/4	19	F	31-41	Z-Z
[REDACTED]	3258/5	25	M	11-21	Z-Z
[REDACTED]	3258/6	31	F	31	R
[REDACTED]	3258/7	32	F	31	R
[REDACTED]	3258/8	19	F	41	Z
[REDACTED]	3258/9	16	F	42	Z
[REDACTED]	3258/10	19	M	32	R
[REDACTED]	3258/11	17	M	12-21	Z-Z
[REDACTED]	3258/12	16	F	12	R
[REDACTED]	3258/13	19	F	21-22	R-R
[REDACTED]	3258/14	21	F	21	Z
[REDACTED]	3258/15	24	M	11-21	Z-Z
[REDACTED]	3258/16	20	M	31	R
[REDACTED]	3258/17	28	M	32	Z
[REDACTED]	3258/18	23	M	21	R
[REDACTED]	3258/19	22	M	11-21	Z-Z
[REDACTED]	3258/20	19	M	31	Z
[REDACTED]	3258/21	30	M	41	R
[REDACTED]	3258/22	28	M	31-41	Z-Z
[REDACTED]	3258/23	27	M	31-41	R-R
[REDACTED]	3258/24	29	M	21	Z
[REDACTED]	3258/25	32	F	21	R
[REDACTED]	3258/26	17	F	11-21	Z-Z
[REDACTED]	3258/27	18	F	11-21	R-R
[REDACTED]	3258/28	18	F	11	R
[REDACTED]	3258/29	18	F	21	Z
[REDACTED]	3258/30	19	F	22-21	R-R
[REDACTED]	3258/31	17	F	12-21	R-R
[REDACTED]	3258/32	17	F	11-12	Z-Z
[REDACTED]	3258/33	21	F	21	Z
[REDACTED]	3258/34	21	F	21-22	Z-Z
[REDACTED]	3258/35	25	F	11	R
[REDACTED]	3258/36	26	F	11	R
[REDACTED]	3258/37	28	F	21	Z
[REDACTED]	3258/38	28	F	21	R
[REDACTED]	3258/39	25	F	31	Z
[REDACTED]	3258/40	25	F	32	R
[REDACTED]	3258/41	23	F	42	Z
[REDACTED]	3258/42	22	F	42	R
[REDACTED]	3258/43	23	F	32	R
[REDACTED]	3258/44	23	M	31-32	Z-Z

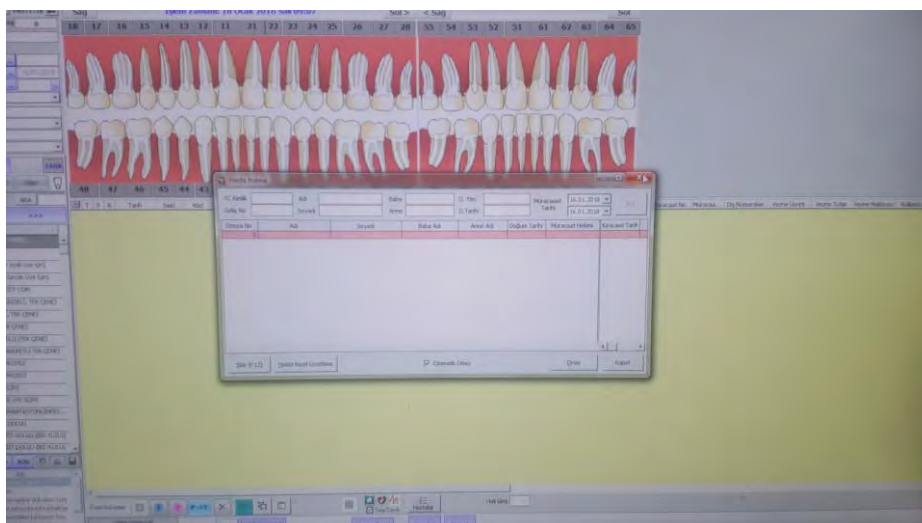
Prof.Dr. Emrah Ayna



Clinic Registrations soft ware



Clinic Registrations soft ware



Clinic Registrations soft ware