



## Treatment of a patient with severe lactic acidosis and multiple organ failure due to mitochondrial myopathy: A case report

Ling Chen, Tian-Kui Shuai, Yu-Wei Gao, Min Li, Peng-Zhong Fang, Waydhas Christian, Li-Ping Liu

**Specialty type:** Medicine, research and experimental

**Provenance and peer review:** Unsolicited article; Externally peer reviewed.

**Peer-review model:** Single blind

**Peer-review report's scientific quality classification**

Grade A (Excellent): 0  
Grade B (Very good): B  
Grade C (Good): C  
Grade D (Fair): 0  
Grade E (Poor): 0

**P-Reviewer:** Bernardes A, Portugal; Juneja D, India

**Received:** May 27, 2023

**Peer-review started:** May 27, 2023

**First decision:** June 13, 2023

**Revised:** June 24, 2023

**Accepted:** July 11, 2023

**Article in press:** July 11, 2023

**Published online:** August 6, 2023



**Ling Chen, Tian-Kui Shuai, Yu-Wei Gao, Min Li, Peng-Zhong Fang, Li-Ping Liu,** Department of Emergency Critical Care Medicine, The First Hospital of Lanzhou University, Lanzhou 730000, Gansu Province, China

**Waydhas Christian,** Intensive Care Unit, Department of Trauma, Hand and Reconstructive Surgery, University Hospital Essen, Essen 44789, Germany

**Corresponding author:** Li-Ping Liu, PhD, Clinical Assistant Professor (Honorary), Doctor, Professor, Department of Emergency Critical Care Medicine, The First Hospital of Lanzhou University, No. 1 Donggang West Road, Chengguan District, Lanzhou 730000, Gansu Province, China. [liulipingldyy@126.com](mailto:liulipingldyy@126.com)

### Abstract

#### BACKGROUND

Mitochondrial myopathy is a rare genetic disease with maternal inheritance that may involve multiple organ systems. Due to the lack of typical characteristics, its clinical diagnosis is difficult, and it is often misdiagnosed or even missed.

#### CASE SUMMARY

The patient was a young college student. When he presented at the hospital, he had severe lactic acidosis, respiratory failure, and shock with multiple organ dysfunction syndrome (MODS). He was treated by mechanical ventilation, veno-arterial extracorporeal membrane oxygenation, and other organ support. However, his condition continued to worsen. After a thorough and detailed medical and family history was taken, a mitochondrial crisis was suspected. A muscle biopsy was taken. Further genetic testing confirmed a mitochondrial gene mutation (*TRNL1* 3243A>G). The final diagnosis of mitochondrial myopathy was made. Although there is no known specific treatment, intravenous methylprednisone and intravenous immunoglobulin were started. The patient's shock eventually improved. The further course was complicated by severe infection in multiple sites, severe muscle weakness, and recurrent MODS. After 2 mo of multidisciplinary management and intensive rehabilitation, the patient could walk with assistance 4 mo after admission and walk independently 6 mo after admission.

#### CONCLUSION

More attention should be paid to mitochondrial myopathy to avoid missed diagnosis and misdiagnosis.

**Key Words:** Mitochondrial myopathy; Mitochondrial crisis; Hyperlactatemia; Extracorporeal membrane oxygenation; Multiple organ dysfunction syndrome; Case report

©The Author(s) 2023. Published by Baishideng Publishing Group Inc. All rights reserved.

**Core Tip:** Mitochondrial crisis is rare and difficult to diagnose and treat. This article reports a patient with mitochondrial crisis, hyperlactic acidemia, and respiratory failure at admission, complicated by multiple organ failure and limb muscle weakness, who survived the mitochondrial crisis after early high-dose hormone and high-dose intravenous human immunoglobulin therapy, and the patient finally recovered and was discharged after more than 2 mo of treatment.

**Citation:** Chen L, Shuai TK, Gao YW, Li M, Fang PZ, Christian W, Liu LP. Treatment of a patient with severe lactic acidosis and multiple organ failure due to mitochondrial myopathy: A case report. *World J Clin Cases* 2023; 11(22): 5398-5406

**URL:** <https://www.wjgnet.com/2307-8960/full/v11/i22/5398.htm>

**DOI:** <https://dx.doi.org/10.12998/wjcc.v11.i22.5398>

## INTRODUCTION

Mitochondrial myopathy, accompanied by myasthenia as the first manifestation, is often associated with stroke and epilepsy-like symptoms. This patient was hospitalized with primary symptoms of hyperlactatemia, severe shock, and multiple visceral failures. In addition, it manifested as a mitochondrial crisis and poor microcirculation and organ support. However, only drugs to improve circulation and assist mitochondrial function could be given without specific treatment for the disease. The purpose of this article is to share the mechanisms behind the diagnosis and treatment of mitochondrial crisis in patients with mitochondrial myopathy to strengthen the understanding of mitochondrial myopathy. By reporting this case, more doctors can reduce the rates of missed diagnosis and misdiagnosis of mitochondrial diseases.

## CASE PRESENTATION

### Chief complaints

A 22-year-old man was hospitalized in June 2021 due to fatigue, chest tightness, and shortness of breath for half a month, which worsened for 4 d.

### History of present illness

The patient caught a cold and developed fatigue, chest tightness, inability to walk, and gradual aggravation of shortness of breath.

### History of past illness

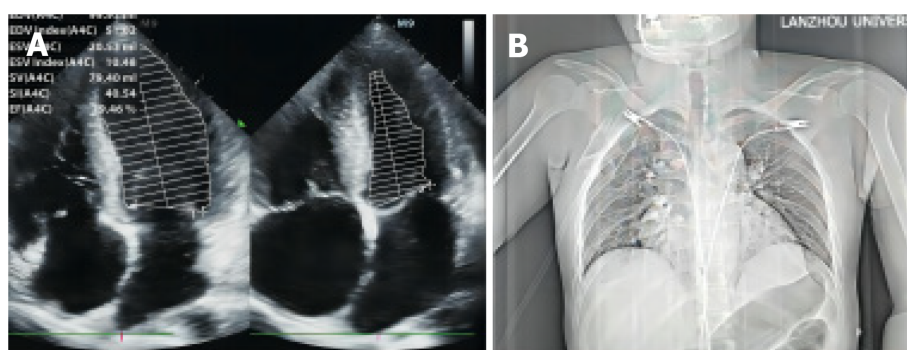
A third-party testing institution and the family history led towards the diagnosis of the underlying disease. The patient had been hospitalized in 2016 and 2018 for muscle weakness, chest tightness, and shortness of breath after strenuous exercises such as running in junior high school. Electromyography indicated a decrease in the amplitude of the evoked potentials and myogenic changes in the right deltoid muscle, but no genetic testing was performed. The patient had responded favourably to the administration of methylprednisolone at that time.

### Personal and family history

The patient's mother and uncle had undiagnosed muscle weakness and tachycardia after fatigue. A distant male relative in the father's family had been diagnosed with pseudohypertrophic muscular dystrophy. A male relative in the mother's family had hereditary muscular dystrophy (point mutation).

### Physical examination

The patient reported progressive shortness of breath. The respiratory rate was 32/min with an SpO<sub>2</sub> of 96% (with 5 L/min of oxygen per mask) and sinus tachycardia (pulse rate 115/min). The pCO<sub>2</sub> was 65 mmHg. Blood pressure (16.7/9.04 Kpa) and body temperature (36.8 °C) were normal. Muscle strength in the extremities was symmetrically reduced with grade 4 of the medical research council scale (with grade 0 assigned to no muscle movement and grade 5 assigned to full strength). There was no aphasia. There were abnormal breath sounds, but the other physical examination was unremarkable.



DOI: 10.12998/wjcc.v11.i22.5398 Copyright ©The Author(s) 2023.

**Figure 1 Echocardiographic and chest X-ray images.** A: Echocardiographic image. Mild enlargement of the whole heart, particularly the right heart, mild mitral and tricuspid valve regurgitation, moderate pulmonary hypertension, and small amounts of pericardial effusion were observed; B: Chest radiograph suggesting enlarged cardiac shadow.

### Laboratory examinations

Abnormal values in the laboratory tests were found for lactate (25 mmol/L), creatine phosphokinase-MB (385 U/L), N-terminal pro-brain natriuretic peptide (1622 pg/mL), white blood cell count (WBC,  $1.88 \times 10^{10}/L$ ) with 84.4% of neutrophils, procalcitonin (5.6 ng/mL), and interleukin-6 (32 pg/mL).

### Imaging examinations

Cardiac ultrasound revealed global heart enlargement, mild mitral and tricuspid valve regurgitation, a pulmonary artery pressure of 3.86 Kpa, and small amounts of pericardial effusion. The left ventricular systolic function appeared normal (Figure 1A). The chest X-ray suggested enlargement of the right heart. No infiltrations could be seen (Figure 1B).

## FINAL DIAGNOSIS

Based on the patient's symptoms, signs, pathology (Figure 2), and genetic testing, the patient received a diagnosis of mitochondrial myopathy and mitochondrial crisis.

## TREATMENT

In mitochondrial crisis, intravenous methylprednisone (IVMP) and intravenous immunoglobulin (IVIG) may be effective. In the maintenance period, the main treatment strategy is symptomatic supportive care and preventive care. There is no unified theory. It is mainly the application of high-dose B vitamins, coenzyme Q10, L-carnitine, *etc.* In addition, adenosine triphosphate, fat emulsion, amino acids, hormones, and other drugs can significantly improve the symptoms of muscle weakness and fatigue, and traditional Chinese medicine[1] (invigorating the spleen, supplementing qi, removing dampness, promoting blood circulation, and removing blood stasis) is also effective.

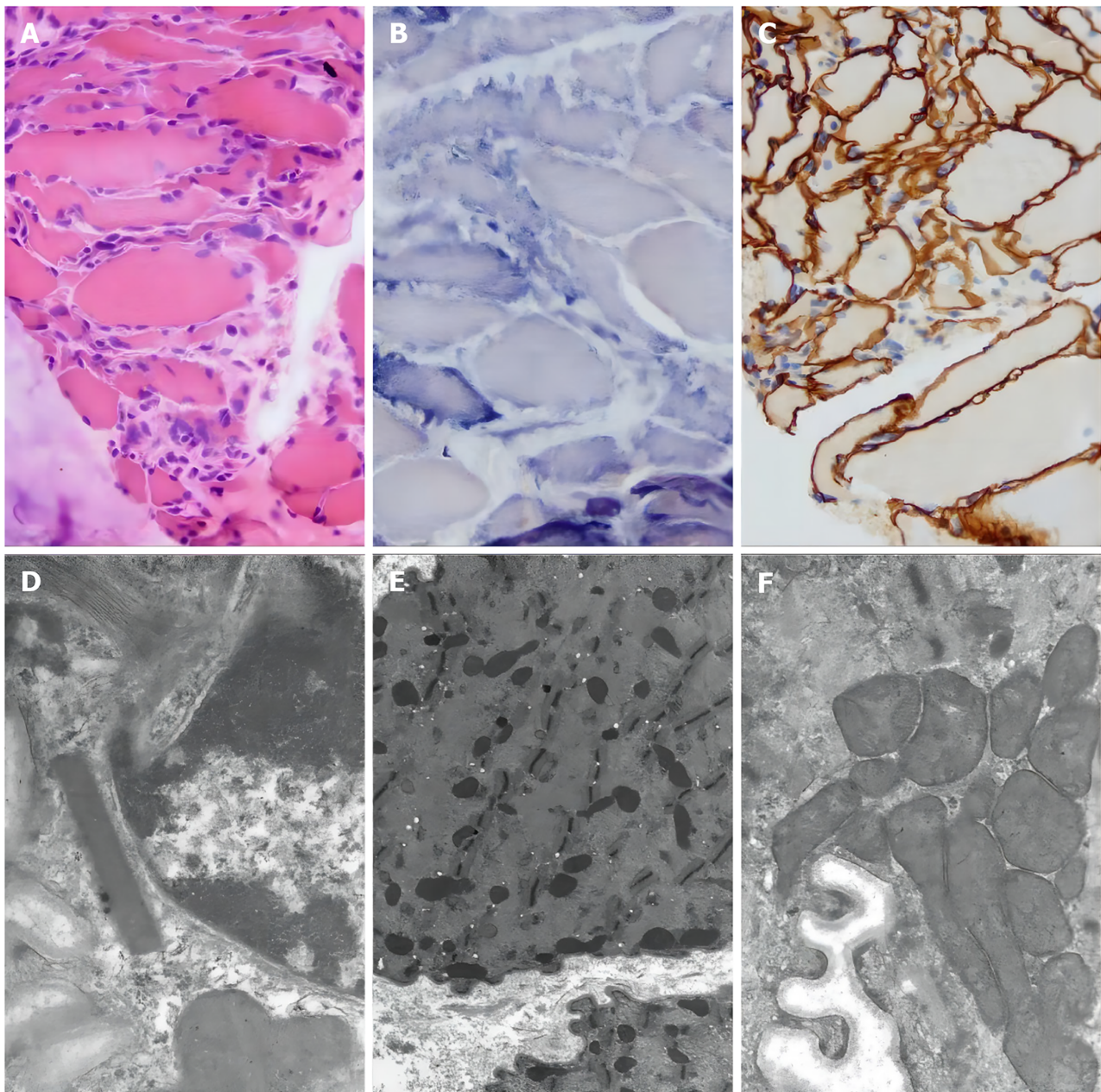
## OUTCOME AND FOLLOW-UP

The patient was able to walk with assistance 4 mo and walk independently 6 mo after the initial admission. Now, the patient is completely normal.

## DISCUSSION

Mitochondrial myopathy is a rare disease with mitochondrial dysfunction as the main feature of the genetic defect[2]. The global incidence rate is only 0.025%[3]. Mitochondrial damage mainly affects the energy supply. Therefore, the brain and muscles that are most sensitive to energy supply are particularly vulnerable in this disease. When both the brain and muscles are involved, the condition is called mitochondrial encephalomyopathy, while the simple invasion of the skeletal muscles is called mitochondrial myopathy[4]. Muscle weakness is a common symptom of several clinical syndromes, such as mitochondrial encephalomyopathy with lactic acidosis and stroke-like episodes (MELAS), chronic progressive external ophthalmoplegia, Kearns-Sayre syndrome, and myoclonus epilepsy ragged-red fibres[5]. Symptoms of exercise intolerance, paroxysmal muscle weakness, and muscle soreness could be corroborated with the diagnosis of mitochondrial myopathy. The disease was predominantly chronic, and few patients developed severe mitochondrial





DOI: 10.12998/wjcc.v11.i22.5398 Copyright ©The Author(s) 2023.

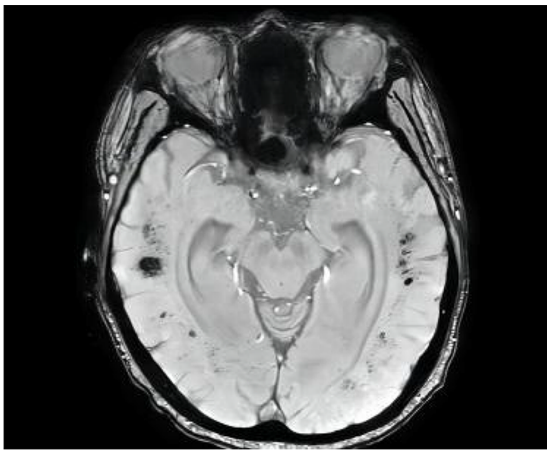
**Figure 2 Optical and electron microscopy of the muscle biopsy of the left calf muscle.** The possibility of mitochondrial myopathy should be considered. A: Muscle biopsy with hematoxylin-eosin staining. The size of muscle fibers varies, some muscle fibers show atrophy, a few muscle fibers' nuclei move inward, individual nuclei gather, muscle fissure is not obvious, and muscle fibers shrink. There is no obvious degeneration and necrosis, no lipid droplets and glycogen vacuoles in the cytoplasm of muscle fibers, no broken red fibers or rimmed vacuoles, no small keratinized muscle fibers or group atrophy, and no bundles. Fibrous tissue hyperplasia of muscle fascicular membrane and myo-intima is not obvious, and inflammatory cells are not obvious; B: Muscle biopsy with succinate dehydrogenase (SDH) staining. Muscle biopsy showed no ragged-blue fiber and strongly SDH reactive blood vessel; C: Muscle biopsy with dystrophin staining. Dystrophin expression was detected at the myosepta uniformly and continuously; D-F: Electron microscopy of muscle biopsy. Mitochondria under the sarcolemma and between myofibrils increase and accumulate, part of their volume increases, and individual mitochondria have suspected formation of lattice-like inclusion bodies.

myopathy. Severe mitochondrial myopathy presents as acute muscle pain, palpitation, dyspnoea, limb weakness, and lactic acidosis. In extreme cases, it can present as a life-threatening mitochondrial crisis[6].

Increased reactive oxygen species generation, hormonal changes, and altered mitochondrial gene transcription are associated with mitochondrial dysfunction in patients with severe sepsis[7]. Therefore, the patient presented with mitochondrial crisis, respiratory insufficiency, muscle weakness, and severe lactic acidosis.

Lactic acidosis can be the result of a large variety of conditions and diseases. Lactic acidosis from tissue hypoxia and hypoperfusion is very common in clinical practice in the intensive care setting. Septic shock could not be completely ruled out in our patient (elevated WBC and procalcitonin). However, there was no hypoxemia, and blood pressure was normal. Furthermore, the initial diagnostic workup did not show an obvious infectious focus. Some cardiac compromise was identified on echocardiography, but this was not consistent with cardiogenic shock. No seizures were reported or observed. Considering type B lactic acidosis, most conditions could be ruled out, including intoxications, poisoning, and





DOI: 10.12998/wjcc.v11.i22.5398 Copyright ©The Author(s) 2023.

**Figure 3** Cranial magnetic resonance imaging showed multifocal perivascular hemorrhage, but the patient had cerebral hemispherical white matter degeneration, cerebral atrophy, and ventricle enlargement on head magnetic resonance imaging.

adverse effects from drugs. In a quiet state, the lactic acid content of the body mainly arises from the skin (25%), red blood cells (20%), the central nervous system (20%), muscles (25%), and the gastrointestinal tract (10%). Under strain, the elevated lactic acid mainly arises from the skeletal muscles. Studies have confirmed that mitochondrial diseases are metabolic disorders caused by pathogenic genetic variants affecting mitochondrial function[8]. These pathogenic variants alter mitochondrial structure and function as well as various mitochondrial processes, such as oxidative phosphorylation, mitochondrial transmembrane ion transport, and mitochondrial division and fusion[9]. Therefore, the cellular energy supply is affected, and lactic acid may accumulate. The change in plasma lactate level over time is a reliable marker of severity and mortality of the disease[10,11]. Recent studies have shown that lactate is a potential biomarker for predicting patients with poor prognoses from septic shock[12]. Relative hyperlactatemia (blood lactate concentration > 0.75 mmol/L) has been shown to be associated with increased in-hospital mortality[13,14].

Rare causes of lactic acidosis, such as mitochondrial myopathy, were considered as the cause of muscle weakness and respiratory distress with hypercapnia.

The third-party testing institution and the family history with recurrent fatigue and weakness after exercise in the patient and established or suspected (mitochondrial) myopathy in other family members pointed us to the clinical suspicion. Autoantibodies, muscle biopsy, and genetic testing were performed.

Myasthenia gravis was suspected, but the immune-related antibody was negative. Strenuous exercise, fatigue, drinking, and sedative drugs may induce respiratory failure in patients with mitochondrial myopathy. This patient had a cold and fatigue 3 d before admission, which could be the primary inducement of the disease. MELAS is a multisystem disease with various neurological, muscular, liver, gastrointestinal, and other symptoms. It leads to exercise intolerance, cramps, and fatigue. Proximal myasthenia is the primary manifestation of myopathy, and progressive exacerbation involves the respiratory muscle and the diaphragm. The main diagnoses of the patient were as follows: (1) Clinical manifestations in the nervous system, eye symptoms, and metabolic disorders; (2) Lactic acidosis; (3) Abnormal mitochondrial morphology in muscle biopsy and ultrastructural examination; and (4) Mutated nuclear or mitochondrial DNA. However, there was no history of seizures or stroke-like symptoms. Cranial magnetic resonance imaging did not show characteristic manifestations of MELAS-like lesions (Figure 3). Therefore, MELAS syndrome was considered unlikely.

Typical morphological findings are broken red muscle fibres that can be visualized using Gomori triple staining, especially when ragged red fibers > 4%-10%, with great diagnostic significance[15]. The findings in the patient's muscle biopsy were suggestive of mitochondrial myopathy but not pathognomonic for MELAS. However, it has been reported that muscle biopsy results can be normal in patients with mitochondrial myopathy[16].

Genetic testing indicated a mitochondrial *TRNL1* 3243A>G mutation. Mitochondrial disease caused by the m.3243A>G mutation is associated with complex and highly variable types of clinical phenotypes. It can involve various tissues and organs, including the nervous system, skeletal muscle and myocardium, ear, eye, kidney, liver, and endocrine system. However, in most cases, it presents with only a single symptom. On the other hand, it may be associated with other diseases or even present as sudden death of unknown cause[17].

On admission, the patient was in critical condition due to sepsis, with hyperlactatemia, respiratory insufficiency, and circulatory failure (table) within a few hours, mainly due to mitochondrial disease with sepsis, excessive mitochondrial oxidative stress, and mitochondrial crisis[18]. Zhou *et al*[6] reported three cases of severe mitochondrial myopathy. One patient died of cardiac arrest at the first onset, and the other two patients were treated for a long time after surviving the metabolic crisis. Pan *et al*[19] summarized the clinical characteristics of five patients with respiratory failure due to the m.3243A>G mutation. They found that acute respiratory failure was the first manifestation of type II respiratory failure and restrictive ventilation dysfunction.

At present, there is no effective or gene-modified treatment for most patients with mitochondrial myopathy. Therefore, the existing regimens focus on symptomatic support. Several clinical trials have studied the therapeutic effects of various



DOI: 10.12998/wjcc.v11.i22.5398 Copyright ©The Author(s) 2023.

**Figure 4 Respiratory therapy, physiotherapy, and rehabilitation.** A: The patient was undergoing respiratory function training; B: The patient was sitting in a chair and doing active muscle training (e.g. shrugging the shoulders); C: The patient was doing standing training with standing bed.

vitamins, adjuvant factors, and small molecules. However, they have not provided clear results[20-23]. Recent research shows that new gene and molecular therapy strategies, especially mitochondrial zinc finger nucleases[24] and mitochondrially targeted transcription activator-like effector nuclease[16], create cell lines carrying different pathogenic mitochondrial DNA mutations that produce beneficial heterogeneous metastasis, providing hope for the future. In addition, recent advances in reproductive selection in patients with mitochondrial myopathy facilitate some families to prevent the transmission of mutation to the next generation.

Methylprednisolone was given because the patient had responded favourably to it in the past. We can only speculate why it was effective or whether adrenal insufficiency was present. For patients with specific mitochondrial crisis, IVMP and IVIG may be effective. They both ameliorate oxidative stress, are both therapeutic agents for idiopathic myopathy, and can also regulate immunity[25-27]. Subsequent treatment of infection and organ support with mechanical ventilation, veno-arterial extracorporeal membrane oxygenation, continuous renal replacement therapy (CRRT), antibiotics, nutrition, and other supportive measures stabilized the patient's condition in the acute phase, and he entered a more stable stage.

Over the next couple of days, the patient continuously stabilized (Table 1). He regained consciousness but had severe respiratory and limb muscle weakness. After more than 2 mo of intensive rehabilitation with functional active exercises (Figure 4), including diaphragmatic pacing, rehabilitation training, and muscle strength training, the patient could be disengaged from the ventilator and was eventually able to stand and walk again (Table 2).

**Table 1** Time course of lactate levels and hemodynamic support during the first 7 d

Days	Norepinephrine (μg/kg/min)	Epinephrine (μg/kg/min)	Lactic acid (mmol/L)	Blood pressure (mmHg)	ECMO
1	18.2	1	31	70/30	+
2	10.8	0.5	27	110/70	+
3	3.2	0.1	15	120/65	+
4	1.8	0.05	11.5	125/73	+
5	0.16	-	9.2	130/75	+
6	0.04	-	6.8	140/75	+
7	-	-	3.4	120/73	-

“+” indicates use during hospitalization; “-” indicates not use during hospitalization. As the treatment progressed, the patient's vasoactive drugs became less and less, lactic acid became lower and lower, and extracorporeal membrane oxygenation was withdrawn. ECMO: Extracorporeal membrane oxygenation.

**Table 2** Development of muscle strength

Days	Cervical muscle paralysis	Respiratory muscle paralysis	Proximal muscle strength	Distal muscle strength	Myalgia	Amyotrophy
On admission	-	-	4	4	-	-
7	+	+	0	0	+	-
10	+	+	0	1	+	-
20	-	+	0	1-2	+	+
30	-	+	0	2	+	+
40	-	+	1-2	3	+	+
60	-	-	2-3	3-4	-	+
90	-	-	4	5	-	+
120	Walk with assistance					
180	Walk independently					

“+” indicates positive signs during hospitalization; “-” indicates negative signs during hospitalization. Clinical physical examination according to the situation of muscle strength, can be roughly divided into 0 to 5, a total of 6 levels, and the specific score is as follows: (1) 0, complete paralysis of the limb, and muscle strength can not be seen or measured by the naked eye muscle contraction; (2) 1, muscle strength can be seen by the naked eye muscle fiber fibrillation, but can not form movement; (3) 2, the limbs can move in parallel on the bed, but can not resist gravity, that is, can not lift off the bed surface; (4) 3, the limbs can resist gravity, can lift off the bed, but can not resist resistance; (5) 4, muscle strength for the limb can resist some resistance; and (6) 5, muscle strength is completely normal.

## CONCLUSION

Although very rare, mitochondrial myopathy can present as a life-threatening disease. The diagnosis can be made by ruling out other causes of lactic acidosis and muscle weakness by taking a thorough family history and performing diagnostic tests such as muscle biopsy and genetic testing. Although there is currently no specific therapy available, supportive intensive care comprising steroid and vitamin therapy and extensive organ support (including extracorporeal membrane oxygenation, long-term mechanical ventilation, CRRT, and others) in combination with a dedicated rehabilitation team and program might result in favourable outcomes.

## FOOTNOTES

**Author contributions:** Chen L was responsible for data collection, patient management, and writing up of the first draft of the paper and revising it; Liu LP was responsible for revising the article critically for important intellectual content, final approval of the version to be published, and agreement to be accountable for all aspects of the work thereby ensuring that questions related to the accuracy or integrity of any part of the work are appropriately investigated and resolved; Shuai TK and Gao YW were responsible for analysis and



interpretation of the data; Li M was responsible for follow-up of this patient after treatment; Fang PZ was responsible for helping to manage the patient and consulting the literature; Christian W was responsible for revising the first draft and giving suggestions; all authors have read and approved the final manuscript.

**Supported by** The Science and Technology Department of Gansu Province, No. 20JR5RA355 and No. 22JR10KA009; Talent Innovation and Entrepreneurship Project of Science and Technology Bureau of Chengguan District, Lanzhou, No. 2020RCCX0030; Lanzhou Science and Technology Development Guiding Plan Project, No. 2019-ZD-37; Fund of The First Hospital of Lanzhou University, No. Ldyyyn2020-79.

**Informed consent statement:** Written informed consent for the publication of this case report was obtained from the patient.

**Conflict-of-interest statement:** The authors declare that they have no competing interests to disclose.

**CARE Checklist (2016) statement:** The authors have read the CARE Checklist (2016), and the manuscript was prepared and revised according to the CARE Checklist (2016).

**Open-Access:** This article is an open-access article that was selected by an in-house editor and fully peer-reviewed by external reviewers. It is distributed in accordance with the Creative Commons Attribution NonCommercial (CC BY-NC 4.0) license, which permits others to distribute, remix, adapt, build upon this work non-commercially, and license their derivative works on different terms, provided the original work is properly cited and the use is non-commercial. See: <https://creativecommons.org/licenses/by-nc/4.0/>

**Country/Territory of origin:** China

**ORCID number:** Li-Ping Liu 0000-0002-8339-0256.

**S-Editor:** Lin C

**L-Editor:** Wang TQ

**P-Editor:** Ji MX

## REFERENCES

- 1 She M, Huang M, Zhang J, Yan Y, Zhou L, Zhang M, Yang Y, Wang D. Astragulus embranaceus (Fisch.) Bge-Dioscorea opposita Thunb herb pair ameliorates sarcopenia in senile type 2 diabetes mellitus through Rab5a/mTOR-mediated mitochondrial dysfunction. *J Ethnopharmacol* 2023; **317**: 116737 [PMID: 37295571 DOI: 10.1016/j.jep.2023.116737]
- 2 Tinker RJ, Lim AZ, Stefanetti RJ, McFarland R. Current and Emerging Clinical Treatment in Mitochondrial Disease. *Mol Diagn Ther* 2021; **25**: 181-206 [PMID: 33646563 DOI: 10.1007/s40291-020-00510-6]
- 3 Pitceathly RD, McFarland R. Mitochondrial myopathies in adults and children: management and therapy development. *Curr Opin Neurol* 2014; **27**: 576-582 [PMID: 25188013 DOI: 10.1097/WCO.0000000000000126]
- 4 Attardi G, Yoneda M, Chomyn A. Complementation and segregation behavior of disease-causing mitochondrial DNA mutations in cellular model systems. *Biochim Biophys Acta* 1995; **1271**: 241-248 [PMID: 7599215 DOI: 10.1016/0925-4439(95)00034-2]
- 5 Montano V, Grusso F, Carelli V, Comi GP, Filosto M, Lamperti C, Mongini T, Musumeci O, Servidei S, Tonin P, Toscano A, Modenese A, Primiano G, Valentino ML, Bortolani S, Marchet S, Meneri M, Tavilla G, Siciliano G, Mancuso M. Primary mitochondrial myopathy: Clinical features and outcome measures in 118 cases from Italy. *Neurol Genet* 2020; **6**: e519 [PMID: 33209982 DOI: 10.1212/NXG.0000000000000519]
- 6 Zhou Y, Yi J, Liu L, Wang X, Dong L, Du A. Acute mitochondrial myopathy with respiratory insufficiency and motor axonal polyneuropathy. *Int J Neurosci* 2018; **128**: 231-236 [PMID: 28969510 DOI: 10.1080/00207454.2017.1387113]
- 7 Singer M. The role of mitochondrial dysfunction in sepsis-induced multi-organ failure. *Virulence* 2014; **5**: 66-72 [PMID: 24185508 DOI: 10.4161/viru.26907]
- 8 Russell OM, Gorman GS, Lightowlers RN, Turnbull DM. Mitochondrial Diseases: Hope for the Future. *Cell* 2020; **181**: 168-188 [PMID: 32220313 DOI: 10.1016/j.cell.2020.02.051]
- 9 Wallace DC, Fan W. The pathophysiology of mitochondrial disease as modeled in the mouse. *Genes Dev* 2009; **23**: 1714-1736 [PMID: 19651984 DOI: 10.1101/gad.1784909]
- 10 Gaieski DF, Goyal M. Serum lactate as a predictor of mortality in emergency department patients with infection: does the lactate level tell the whole story? *Ann Emerg Med* 2005; **46**: 561-2; author reply 562 [PMID: 16308078 DOI: 10.1016/j.annemergmed.2005.07.021]
- 11 Nichol A, Bailey M, Egi M, Pettila V, French C, Stachowski E, Reade MC, Cooper DJ, Bellomo R. Dynamic lactate indices as predictors of outcome in critically ill patients. *Crit Care* 2011; **15**: R242 [PMID: 22014216 DOI: 10.1186/cc10497]
- 12 Wong HR, Lindsell CJ, Pettila V, Meyer NJ, Thair SA, Karlsson S, Russell JA, Fjell CD, Boyd JH, Ruokonen E, Shashaty MG, Christie JD, Hart KW, Lahni P, Walley KR. A multibiomarker-based outcome risk stratification model for adult septic shock\*. *Crit Care Med* 2014; **42**: 781-789 [PMID: 24335447 DOI: 10.1097/CCM.0000000000000106]
- 13 Nichol AD, Egi M, Pettila V, Bellomo R, French C, Hart G, Davies A, Stachowski E, Reade MC, Bailey M, Cooper DJ. Relative hyperlactatemia and hospital mortality in critically ill patients: a retrospective multi-centre study. *Crit Care* 2010; **14**: R25 [PMID: 20181242 DOI: 10.1186/cc8888]
- 14 Wacharasint P, Nakada TA, Boyd JH, Russell JA, Walley KR. Normal-range blood lactate concentration in septic shock is prognostic and predictive. *Shock* 2012; **38**: 4-10 [PMID: 22552014 DOI: 10.1097/SHK.0b013e318254d41a]
- 15 Mito T, Vincent AE, Faltg J, Taylor RW, Khan NA, McWilliams TG, Suomalainen A. Mosaic dysfunction of mitophagy in mitochondrial muscle disease. *Cell Metab* 2022; **34**: 197-208.e5 [PMID: 35030325 DOI: 10.1016/j.cmet.2021.12.017]

- 16 **Ahmed ST**, Craven L, Russell OM, Turnbull DM, Vincent AE. Diagnosis and Treatment of Mitochondrial Myopathies. *Neurotherapeutics* 2018; **15**: 943-953 [PMID: 30406383 DOI: 10.1007/s13311-018-00674-4]
- 17 **Li D**, Liang C, Zhang T, Marley JL, Zou W, Lian M, Ji D. Pathogenic mitochondrial DNA 3243A>G mutation: From genetics to phenotype. *Front Genet* 2022; **13**: 951185 [PMID: 36276941 DOI: 10.3389/fgene.2022.951185]
- 18 **San-Millán I**. The Key Role of Mitochondrial Function in Health and Disease. *Antioxidants (Basel)* 2023; **12** [PMID: 37107158 DOI: 10.3390/antiox12040782]
- 19 **Pan X**, Wang L, Fei G, Dong J, Zhong C, Lu J, Jin L. Acute Respiratory Failure Is the Initial Manifestation in the Adult-Onset A3243G tRNA<sup>Leu</sup> mtDNA Mutation: A Case Report and the Literature Review. *Front Neurol* 2019; **10**: 780 [PMID: 31379729 DOI: 10.3389/fneur.2019.00780]
- 20 **de Barcelos IP**, Emmanuele V, Hirano M. Advances in primary mitochondrial myopathies. *Curr Opin Neurol* 2019; **32**: 715-721 [PMID: 31408013 DOI: 10.1097/WCO.0000000000000743]
- 21 **Rodriguez MC**, MacDonald JR, Mahoney DJ, Parise G, Beal MF, Tarnopolsky MA. Beneficial effects of creatine, CoQ10, and lipoic acid in mitochondrial disorders. *Muscle Nerve* 2007; **35**: 235-242 [PMID: 17080429 DOI: 10.1002/mus.20688]
- 22 **Parikh S**, Saneto R, Falk MJ, Anselm I, Cohen BH, Haas R, Medicine Society TM. A modern approach to the treatment of mitochondrial disease. *Curr Treat Options Neurol* 2009; **11**: 414-430 [PMID: 19891905 DOI: 10.1007/s11940-009-0046-0]
- 23 **DiMauro S**, Mancuso M. Mitochondrial diseases: therapeutic approaches. *Biosci Rep* 2007; **27**: 125-137 [PMID: 17486439 DOI: 10.1007/s10540-007-9041-4]
- 24 **Gammage PA**, Gaude E, Van Haute L, Rebelo-Guimar P, Jackson CB, Rorbach J, Pekalski ML, Robinson AJ, Charpentier M, Concordet JP, Frezza C, Minczuk M. Near-complete elimination of mutant mtDNA by iterative or dynamic dose-controlled treatment with mtZFNs. *Nucleic Acids Res* 2016; **44**: 7804-7816 [PMID: 27466392 DOI: 10.1093/nar/gkw676]
- 25 **MICKS RH**, MULLANEY J. Dermatomyositis successfully treated by prednisone. *Ir J Med Sci* 1958; 333-334 [PMID: 13562963 DOI: 10.1007/BF02950398]
- 26 **Ernste FC**, Reed AM. Idiopathic inflammatory myopathies: current trends in pathogenesis, clinical features, and up-to-date treatment recommendations. *Mayo Clin Proc* 2013; **88**: 83-105 [PMID: 23274022 DOI: 10.1016/j.mayocp.2012.10.017]
- 27 **Ben Mkaddem S**, Aloulou M, Benhamou M, Monteiro RC. Role of FcγRIIIA (CD16) in IVIg-mediated anti-inflammatory function. *J Clin Immunol* 2014; **34** Suppl 1: S46-S50 [PMID: 24728843 DOI: 10.1007/s10875-014-0031-6]



Published by **Baishideng Publishing Group Inc**  
7041 Koll Center Parkway, Suite 160, Pleasanton, CA 94566, USA

**Telephone:** +1-925-3991568

**E-mail:** [bpgoffice@wjgnet.com](mailto:bpgoffice@wjgnet.com)

**Help Desk:** <https://www.f6publishing.com/helpdesk>

<https://www.wjgnet.com>

