



Observational Study

Helicobacter pylori infection in Xinjiang Uyghur Autonomous Region: Prevalence and analysis of related factors

Yu-Hua Peng, Xue Feng, Zhong Zhou, Lei Yang, Yun-Fei Shi

Specialty type: Gastroenterology and hepatology

Provenance and peer review:

Unsolicited article; Externally peer reviewed.

Peer-review model: Single blind

Peer-review report's scientific quality classification

Grade A (Excellent): 0
Grade B (Very good): B, B
Grade C (Good): 0
Grade D (Fair): 0
Grade E (Poor): 0

P-Reviewer: Bordin DS, Russia; Keikha M, Iran

Received: August 19, 2023

Peer-review started: August 19, 2023

First decision: September 28, 2023

Revised: October 10, 2023

Accepted: October 29, 2023

Article in press: October 29, 2023

Published online: November 21, 2023



Yu-Hua Peng, Zhong Zhou, Department of Pathology, Traditional Chinese Medical Hospital of Xinjiang Uyghur Autonomous Region, The Affiliated Hospital of Traditional Chinese Medicine of Xinjiang Medical University, Urumqi 830000, Xinjiang Uyghur Autonomous Region, China

Xue Feng, Department of Laboratory Medicine, Traditional Chinese Medical Hospital of Xinjiang Uyghur Autonomous Region, The Affiliated Hospital of Traditional Chinese Medicine of Xinjiang Medical University, Urumqi 830000, Xinjiang Uyghur Autonomous Region, China

Lei Yang, Key Laboratory of Carcinogenesis and Translational Research (Ministry of Education/Beijing), Beijing Office for Cancer Prevention and Control, Peking University Cancer Hospital & Institute, Beijing 100142, China

Yun-Fei Shi, Key Laboratory of Carcinogenesis and Translational Research (Ministry of Education/Beijing), Department of Pathology, Peking University Cancer Hospital & Institute, Beijing 100142, China

Corresponding author: Yun-Fei Shi, MD, PhD, Doctor, Key Laboratory of Carcinogenesis and Translational Research (Ministry of Education/Beijing), Department of Pathology, Peking University Cancer Hospital & Institute, No. 52 Fucheng Road, Haidian District, Beijing 100142, China. shiyunfei@bjmu.edu.cn

Abstract

BACKGROUND

¹⁴C urea breath test (¹⁴C UBT) and immunohistochemical staining (IHC) are widely used for detection *Helicobacter pylori* (*H. pylori*) infection with different sensitivity, and there is a difference in *H. pylori* infection rate in Uyghur and Han ethnic groups. Both need large cohort studies to evaluate the differences more accurately.

AIM

To analyze the difference between ¹⁴C UBT and IHC for *H. pylori* detection in Xinjiang Uyghur Autonomous Region and the difference between Uyghur and Han populations.

METHODS

There were 3944 cases of *H. pylori* infection detected by both IHC and ¹⁴C UBT at the same time (interval < 1 wk, with sampling site including gastric antrum, selected from 5747 patients). We compared the sensitivity of ¹⁴C UBT and IHC. We

also compared 555 pairs of Han/Uyghur cases (completely matched for gender and age) for their *H. pylori* infection rates. The overall *H. pylori* infection rate of all 5747 cases and the correlation with other clinicopathological data were also further analyzed. SPSS V23.0 software was used for statistical analysis.

RESULTS

The sensitivity was 94.9% for ^{14}C UBT and 65.1% for IHC, which was a significant difference ($n = 3944$, $P < 0.001$). However, among those cases negative for *H. pylori* by ^{14}C UBT (detection value ≤ 100), 4.8% were positive by IHC. Combining both methods, the overall *H. pylori* infection rate was 48.6% ($n = 5747$), and differences in gender, age group, ethnicity and region of residence significantly affected the *H. pylori* positive rates. According to age group (Han/Uyghur), the positive rates were ≤ 30 years (62.2%/100.0%), 31-40 years (45.2%/85.7%), 41-50 years (47.2%/79.2%), 51-60 years (44.6%/76.1%), 61-70 years (40.9%/68.2%), 71-80 years (41.7%/54.1%) and ≥ 81 years (42.9%/NA). The *H. pylori* infection rates of Han/Uyghur paired cases were 41.4% and 73.3%, which was a significant difference ($P < 0.001$) (555 pairs). *H. pylori* positivity was significantly related to moderate-severe grade 2-3 chronic/active gastritis and intestinal metaplasia (all $P < 0.05$).

CONCLUSION

The sensitivity of ^{14}C UBT was significantly higher, but combined application can still increase the accuracy. The prevention *H. pylori* should be emphasized for Uyghur and young people.

Key Words: *Helicobacter pylori*; Immunohistochemistry; ^{14}C urea breath test; Han; Uyghur; Xinjiang Uyghur Autonomous Region

©The Author(s) 2023. Published by Baishideng Publishing Group Inc. All rights reserved.

Core Tip: The sensitivity of ^{14}C urea breath test (^{14}C UBT) for detecting *Helicobacter pylori* (*H. pylori*) is significantly higher than that of immunohistochemistry (IHC) with endoscopy specimens. Combination of ^{14}C UBT and IHC is necessary to improve detection accuracy, and increasing the number of biopsy specimens (≥ 2) can improve the positive rate significantly. The overall rate of *H. pylori* infection in Xinjiang Uyghur Autonomous Region was higher than in previous studies. *H. pylori* infection was more prevalent in the Uyghur population and the infection rate decreased as age increased. Therefore, the prevention and intervention of *H. pylori* infection in Xinjiang Uyghur Autonomous Region should emphasize Uyghur and young people.

Citation: Peng YH, Feng X, Zhou Z, Yang L, Shi YF. *Helicobacter pylori* infection in Xinjiang Uyghur Autonomous Region: Prevalence and analysis of related factors. *World J Gastroenterol* 2023; 29(43): 5834-5847

URL: <https://www.wjgnet.com/1007-9327/full/v29/i43/5834.htm>

DOI: <https://dx.doi.org/10.3748/wjg.v29.i43.5834>

INTRODUCTION

Helicobacter pylori (*H. pylori*) is a Gram-negative bacterium that mainly parasitizes the oral cavity, stomach, and duodenum after infection[1]. It was first isolated and cultured from patients with gastritis by Warren and Marshall[2] in Australia. It was extensively studied and reported that the vast majority of gastric and duodenal ulcers are associated with *H. pylori* infection, which is also associated with gastric cancer. *H. pylori* has been classified by World Health Organization as a class I carcinogen[3]. Diseases related to *H. pylori* are infectious as emphasized by the Kyoto Consensus [4]. It is known that transmission pathway of *H. pylori* includes fecal-oral and oral-oral transmission[1,5].

The Xinjiang Uyghur Autonomous Region of China has a vast territory and is inhabited by multiple ethnic groups; the main two being Han and Uyghur. Due to the differences in climate, lifestyle, dietary habits, and medical and health conditions, there are differences in *H. pylori* infection status. Although there are some previous reports from Chinese journals, the studies involved small series or their detection methods were not sufficiently sensitive[6-9].

The most important way to more accurately investigate the infection rate of *H. pylori* is to use a more accurate method of detection. Clinical *H. pylori* testing is divided into noninvasive and invasive types[10-12]. The noninvasive tests are mainly carried out in the endoscopy rooms or laboratories of various medical institutions, and the highly recommended method is the ^{14}C urea breath test (^{14}C UBT) test. For the invasive tests, detection of *H. pylori* is through gastroscopic biopsy of pathological tissue. Previous studies have shown that immunohistochemical staining to detect *H. pylori* infection has the highest sensitivity and specificity among all histopathological methods for endoscopic biopsies[13-15]. At present, the consensus is that both immunohistochemistry (IHC) and ^{14}C UBT detection of *H. pylori* infection can be used for diagnosing *H. pylori* infection[16-18]. However, there is controversy in the literature about the sensitivity of IHC and ^{14}C UBT. One study ($n = 150$) reported that UBT was more sensitive[19] but another study ($n = 239$) reported that IHC had higher sensitivity[20]. Larger studies are needed to compare the differences between ^{14}C UBT and IHC for detection

of *H. pylori* infection.

Thus, we retrospectively studied a large series of patients who underwent both ^{14}C UBT and IHC and on histopathological diagnosed gastroscopy specimens between January 2019 and February 2021 and through gastroscopy at our hospital in Urumqi. We aimed to investigate the differences between the two detection methods; evaluate *H. pylori* infection rate in Xinjiang Uyghur Autonomous Region; and establish whether there were differences in *H. pylori* infection due to factors such as age, gender, region, and especially, ethnic group (Uyghur and Han). It is hoped that our study might provide more accurate data about the difference in the two widely used *H. pylori* detection methods, and would be useful for the detection, prevention and intervention of *H. pylori* infection in Xinjiang Uyghur Autonomous Region.

MATERIALS AND METHODS

Patients and data collection criteria

A retrospective control study was conducted among patients who went to the Traditional Chinese Medical Hospital of Xinjiang Medical University between March 2019 and February 2021 due to gastrointestinal discomfort for which they underwent pathological examination of gastric biopsy tissue. The screening criteria were as follows: (1) All enrolled patients also underwent ^{14}C UBT; (2) No history of medication (such as antibiotics, proton pump inhibitors, and bismuth-based agents) that affected *H. pylori* activity, or a positive detection rate within 1 mo before the examination; and (3) Complete clinical information. This study met the ethical requirements of the Ethics Committee of Traditional Chinese Medical Hospital of Xinjiang Medical University.

Pathological features

H. pylori infection was detected using hematoxylin and eosin (H&E) staining, IHC staining, and ^{14}C UBT.

H&E staining of paraffin-embedded tissue

All specimens were fixed with 10% neutral formaldehyde solution, routinely dehydrated, embedded, and cut into 4-5 μm sections. We used an automated staining machine (LEICA Company, AUTOSTAINER) for H&E staining.

IHC staining

IHC staining was performed using a BENCHMARK-XT automatic staining machine (Roche) with *H. pylori* antibody working solution (MX104 mouse antihuman monoclonal antibody; Fuzhou Maixin Company), and the positive signal was stained with DAB. Both positive and negative controls were established. The positive control was confirmed to be *H. pylori* positive gastric biopsy tissue with plenty of *H. pylori* (staining > 100 bacterial bodies/*H. pylori*, F). The negative control used a blank antibody solution instead of the first antibody working solution.

Interpretation of pathological results

H&E staining: Pathological diagnosis and gastritis grading (including grading of chronic gastritis, active gastritis, atrophy, and intestinal metaplasia). Classification: Grade 0 (none), grade 1 (mild), grade 2 (moderate), and grade 3 (severe), and statistical analysis was conducted in sequence.

IHC staining sections of H. pylori

Positive/negative results were based on the presence or absence of *H. pylori* bacteria under the microscope. All sections were independently reviewed by two senior pathologists, and for those cases with inconsistency, a third senior pathologist provided the final interpretation.

^{14}C UBT

Patients were tested on an empty stomach or fasting for > 2 h, and the test was positive if ≥ 100 dpm/mmol, and negative if 0-100 dpm/mmol. The ^{14}C urea capsule and related reagents, as well as the *H. pylori* detector, were all provided by Shenzhen Zhonghe Headway Bio-Sci & Tech Co. Ltd.

Criteria for determining positive H. pylori infection

At least one positive result from ^{14}C UBT and IHC is considered as a positive *H. pylori* infection. In the literature, both are the preferred methods for noninvasive and invasive detection; therefore, a positive result with either one can directly diagnose *H. pylori* infection. Both methods have high specificity (default close to 100%). Comparison of the two detection methods in this study focused on the sensitivity aspect. Sensitivity was calculated as: sensitivity = number of true positive cases / (number of true positive cases + number of false negative cases) $\times 100\%$.

Grouping and matching and statistical analysis

In order to accurately compare the results of ^{14}C UBT and IHC, it is required that: (1) Gastroscopic pathological examination (H&E and IHC), ^{14}C UBT and the interval between pathological examinations should be < 1 wk; (2) The sampling sites should include the gastric antrum; and (3) The number of samples taken by clinicians should be recorded as it may affect the detection results. A total of 3944 eligible cases were selected from all cases undergoing both ^{14}C UBT and IHC.

We speculated that ethnic differences would be the main factor affecting *H. pylori* infection. We used pathological IHC and ^{14}C UBT, with Uyghur as the case group and Han as the control group, and matched them 1:1. The matching variables included gender and age. A total of 555 fully matched Uyghur and Han cases were obtained, including 249 males and 306 females (male to female ratio of approximately 1:1.23), aged 24–80 years (average 54.1 years, median 48 years), to further investigate the exact impact of ethnic differences on *H. pylori* infection. SPSS version 23.0 was used for statistical analysis and comparison (using χ^2 tests), and $P < 0.05$ represented a statistically significant difference.

RESULTS

Clinical features

A total of 5747 cases were included. Overall, the male to female ratio was 1:1.15 (2672/3075). Age ranged from 19 to 92 years, with a median of 56 years. There were 4925 cases of Han and 822 cases of Uyghur. Divided by the Tianshan Mountains, there were 4919 cases residing in Northern Xinjiang, 508 in Southern Xinjiang, 265 in the Xinjiang Production and Construction Corps (XPCC), and 55 in areas outside Xinjiang Uyghur Autonomous Region. The case information is detailed in Table 1.

Comparative analysis of IHC and ^{14}C UBT for detecting *H. pylori* infection

For the typical *H. pylori*-positive cases, which were definitively confirmed in the H&E sections (Figure 1A), spiral-shaped or curved bacteria were seen in the superficial mucus secreted from the gastric mucosa, or in the gastric glandular cavity. However, when the number of *H. pylori* was limited or their morphology was atypical (such as coccoid shapes), it was difficult to recognize them (Figures 1B and C). Using *H. pylori* antibodies and IHC can specifically label *H. pylori*. For typical positive cases, *H. pylori* uniformly appeared like small brown rods (Figure 1D). For those cases with low bacterial count, they can also be more easily identified and confirmed, which helps to prevent missed diagnosis or false negative result (Figures 1E and F).

Among the 3944 cases who underwent both IHC and ^{14}C UBT during gastroscopy (interval < 1 wk, including gastric antrum), the overall positive rate of *H. pylori* infection was 49.7% (1962/3944): 29.8% (1176/3944) of the cases were positive by both ^{14}C UBT and IHC; 2.6% (101/3944) were solely positive for IHC; 17.4% (685/3944) were solely positive for ^{14}C UBT; and 50.3% (1982/3944) were negative. According to the previously established standards, the sensitivity of ^{14}C UBT detection was 94.9% (1861/1962), and the sensitivity of IHC detection was 65.1% (1277/1962). Pearson's χ^2 test confirmed that there was a significant difference between the two methods ($P < 0.001$).

When the *H. pylori* positive rates detected by IHC were compared with the value ranges detected by ^{14}C UBT, it would be 4.2%, 11.1%, 25.6%, 52.6%, 66.8% and 73.9% in the value ranges 0–49, 50–100, 101–199, 200–499, 500–999 and ≥ 1000 , respectively. For cases negative by ^{14}C UBT, the *H. pylori* positive rate by IHC was 4.8%, while for cases defined as positive by ^{14}C UBT, the *H. pylori* positive rate by IHC was 63.2% (Tables 2 and 3).

To clarify the impact of the difference in the number of biopsies taken during gastric endoscopy on the positive rate by IHC, we divided those cases into two groups: Single biopsy (only 1 specimen) and multiple biopsies (≥ 2 specimens). Pearson's test confirmed that the positive rate for immunohistochemical detection in the single biopsy group was 28.4% (987/3476), and the positive rate in the multiple biopsy group was 40.4% (189/468). The two groups were significantly different ($P < 0.001$) by Pearson χ^2 test, and the *H. pylori*-positive rate in the multiple biopsy group was significantly increased (Table 2).

Correlation between overall infection status of *H. pylori* and clinical factors such as ethnicity, age, gender and region

According to the *H. pylori* positive criteria, the overall positive rate of *H. pylori* infection was 48.6% (2794/5747). The infection rate in male and female patients was 51.0% (1362/2672) and 46.6% (1432/3075), respectively, with a significant difference by χ^2 test ($P = 0.001$). The *H. pylori* infection rates in the Han and Uyghur ethnic groups were 44.2% (2175/4925) and 75.3% (619/822), respectively, with a significant difference ($P < 0.001$). Further statistical analysis showed that the *H. pylori* infection rate was 47.4% (1091/2303) in Han Chinese males and 41.3% (1084/2622) in Han females, which was a significant difference by χ^2 test ($P < 0.001$). The infection rate was 73.4% (271/369) in Uyghur men and 76.8% (348/453) in Uyghur women, which was not a significant difference by χ^2 test ($P = 0.291$).

When grouped according to age, the *H. pylori* infection rates in the Han ethnic group were 62.2% (23/37) in the ≤ 30 years group, 45.2% (109/241) in the 31–40 years group, 47.2% (523/1108) in the 41–50 years group, 44.6% (814/1825) in the 51–60 years group, 40.9% (488/1193) in the 61–70 years group, 41.7% (194/465) in the 71–80 years group, and 42.9% (24/56) in the ≥ 81 years group. The *H. pylori* infection rates in the Uyghur ethnic group were 100.0% (16/16) in the ≤ 30 years group, 85.7% (48/56) in the 31–40 years group, 79.2% (171/216) in the 41–50 years group, 76.1% (242/318) in the 51–60 years group, 68.2% (122/179) in the 61–70 years group, 54.1% (20/77) in the 71–80 years group, and data for the ≥ 81 years group were missing. The trend in *H. pylori*-positive rate with age group can be seen in Figure 2.

According to region of residence, the *H. pylori* infection rate was 47.4% (2333/4919) in northern Xinjiang, 66.3% (337/508) in southern Xinjiang, 37.0% (98/265) in the XPCC, and 47.3% (26/55) outside Xinjiang Uyghur Autonomous Region. There was a significant difference in *H. pylori* infection rate among the regions, and the rate in southern Xinjiang was the highest ($P < 0.001$). The *H. pylori*-positive rates of the Han and Uyghur ethnic groups in northern Xinjiang region were 44.5% (1959/4405) and 72.8% (374/514), respectively, and 47.8% (99/207) and 79.1% (238/301) in southern Xinjiang. The infection rates in the Han and Uyghur ethnic groups in the XPCC region were 36.5% (96/263) and 100.0% (2/2), and 42.0% (96/263) and 100.0% (5/5), respectively.

Table 1 The essential epidemic features of cases detected *Helicobacter pylori* with immunohistochemical staining and ¹⁴C urea breath test methods (*n* = 5747)

Characteristics		Total	Han	Uyghur
Gender (cases)	Male	2672 (46.5%)	2303 (46.8%)	369 (44.9%)
	Female	3075 (53.5%)	2622 (53.2%)	453 (55.1%)
Age (yr)	Range	19-92	19-92	22-80
	Average	56.3	56.7	53.4
	Median	56.0	56.0	54.0
Residing region (cases)	Northern Xinjiang	4919 (85.6%)	4405 (89.4%)	514 (62.5%)
	Southern Xinjiang	508 (8.8%)	207 (4.2%)	301 (36.6%)
	Xinjiang Production and Construction Corps	265 (4.6%)	263 (5.3%)	2 (0.2%)
	Extra Xinjiang Uyghur Autonomous Region	55 (1.0%)	50 (1.0%)	5 (0.6%)
Total (cases)		5747	4925 (85.7%)	822 (14.3%)

Table 2 Comparison of differences between immunohistochemical staining and ¹⁴C urea breath test for detecting *Helicobacter pylori* infection (*n* = 3944)

		<i>H. pylori</i> positive rate (%)					<i>P</i> value (single vs multiple biopsy) ²
		Positive ¹	Negative ¹	<i>P</i> value ¹	Positive ²	Negative ²	
¹⁴ C UBT (total, <i>n</i> = 3944)	Positive	1176 (29.8%)	685 (17.4%)	<i>P</i> < 0.001	1962 (49.7%)	1982 (50.3%)	-
	Negative	101 (2.6%)	1982 (50.3%)				
Subgroup Single biopsy (1 piece, <i>n</i> = 3476)	Positive	987 (28.4%)	608 (17.5%)	<i>P</i> < 0.001	1068 (30.7%)	2408 (69.3%)	<i>P</i> < 0.001
	Negative	81 (2.3%)	1800 (51.8%)				
Multiple biopsies (≥ 2 pieces, <i>n</i> = 468)	Positive	189 (40.4%)	77 (16.5%)	<i>P</i> < 0.001	209 (44.7%)	259 (55.3%)	
	Negative	20 (4.3%)	182 (38.9%)				

¹Immunohistochemical staining.
²Immunohistochemical staining & ¹⁴C urea breath test combined.
¹⁴C UBT: ¹⁴C urea breath test; *H. pylori*: *Helicobacter pylori*.

Precise matched comparison for *H. pylori* infection rates between Han and Uyghur groups

For the 555 matched cases of Uyghur and Han groups, the positive rate of *H. pylori* infection in the Uyghur group was 73.3%, while the positive rate in the matched Han cases was 41.4%. The positive rates of *H. pylori* infection in the Uyghur group were higher than those in the Han group by using IHC (53.2% and 27.7%) or ¹⁴C UBT (69.5% and 38.2%). These differences were significant by χ^2 test (all *P* < 0.001). In the matched cases, the infection rate of *H. pylori* in Han men was 47.4%, which was higher than that in Han women (36.6%), which was a significant difference by χ^2 test (*P* = 0.012). The infection rate in Uyghur men was 72.3%, and that of Uyghur women was 74.2%, but there was no significant difference by χ^2 test (*P* = 0.630), **Table 4**.

Correlation between main disease types diagnosed by gastric biopsy and *H. pylori* infection

The pathological changes in the H&E-stained slides of gastric mucosa were classified as follows: (1) Benign lesions: 4609 cases of gastritis; 4 with ulcer diagnosed definitively; 440 cases of gastric fundic gland polyps; 502 cases of hyperplastic (regenerative) polyps; three cases of xanthoma; and 36 cases of duodenal ectopic gastric mucosa; (2) Precancerous lesions: Nine cases of LGIN; seven cases of gastric HGIN; two cases of esophageal LGIN; two cases of esophageal HGIN; 92 cases of BE; and one case of duodenal LGIN; and (3) Tumors: 34 cases of gastric adenocarcinoma; four cases of lymphoma; one case of neuroendocrine tumor; and one case of stromal tumor.

To ensure the accuracy of *H. pylori* positive rates, we only show disease types with more than 20 samples here, and the other types are included in **Table 5**. The *H. pylori* positive rates obtained solely by IHC were as follows: (1) Benign lesions: Gastritis 35.8%, duodenal ectopic gastric mucosa 19.4%, gastric fundic gland polyps 17.3%, and hyperplastic

Table 3 Comparison of the differences between immunohistochemical staining and ¹⁴C urea breath test and the in detecting *Helicobacter pylori* infection at different value range levels (n = 3944)

Qualitative results ¹	Value ranges (dpm/mmol) ¹	Positive ²	Negative ²	Positive ratio (%) ²	IHC positive rate ²
Negative (n = 2083)	0-49	80	1813	4.2	4.8% (101/2083)
	50-100	21	169	11.1	
Positive (n = 1861)	101-199	46	134	25.6	63.2% (1176/1861)
	200-499	193	174	52.6	
	500-999	324	161	66.8	
	≥ 1000	613	216	73.9	

¹*Helicobacter pylori* of ¹⁴C urea breath test.²Immunohistochemical staining for *Helicobacter pylori*.

IHC: Immunohistochemistry.

Table 4 Comparison of *Helicobacter pylori* infection rates between Han and Uyghur undergoing gastroscopy examination among accurately matched pairs (n = 555)

<i>H. pylori</i> positive rate									
Method	Male (n = 249) ¹	Female (n = 306) ¹	P value (male/female, Pearson) ¹	Subtotal (n = 555) ¹	Male (n = 249) ²	Female (n = 306) ²	P value (male/female, Pearson) ²	Subtotal (n = 555) ²	P value (total, Han and Uyghur), Pearson
IHC	89 (35.7%)	65 (21.2%)	P < 0.001	154 (27.7%)	134 (53.8%)	161 (52.6%)	P = 0.778	295 (53.2%)	P < 0.001
¹⁴ C UBT	111 (44.6%)	101 (33.0%)	P = 0.005	212 (38.2%)	170 (68.3%)	216 (70.0%)	P = 0.556	386 (69.5%)	P < 0.001
IHC & ¹⁴ C UBT	118 (47.4%)	112 (36.6%)	P = 0.012	230 (41.4%)	180 (72.3%)	227 (74.2%)	P = 0.630	407 (73.3%)	P < 0.001

¹Han.²Uyghur.¹⁴C UBT: ¹⁴C urea breath test; *H. pylori*: *Helicobacter pylori*; IHC: Immunohistochemistry; Pearson: Pearson χ^2 test.

(regenerative) polyps 7.4%; (2) Precancerous lesions: BE 41.3%; and (3) Malignant tumors: 41.2% of gastric adenocarcinoma. If the combination of two detection methods was used, the *H. pylori* infection rate in patients with various types of diseases diagnosed by gastroscopy was higher: (1) Benign lesions: Gastritis 53.8%, gastric fundic gland polyps 27.5%, duodenal ectopic gastric mucosa 22.2%, and hyperplastic (regenerative) polyps 17.5%; (2) Precancerous lesions: *H. pylori*-positive rate of BE was 58.7% (based on gastric samples taken simultaneously, Figure 3); and (3) Malignant tumors: 67.6% gastric adenocarcinoma, Table 5.

Correlation between *H. pylori* infection rate and grading of chronic or active gastritis, atrophy, and intestinal metaplasia

For gastritis, 91.6% (4222/4609) of the cases showed intact structure of the mucosal lamina propria, which was evaluated and graded according to chronic gastritis, active gastritis, atrophy and intestinal metaplasia. The positive rates for *H. pylori* were as follows: (1) Chronic gastritis: *H. pylori* positive rates of grades 1-3 were 29.9%, 85.2% and 95.6%, respectively; (2) Active gastritis: The positive rates of *H. pylori* in grades 0-3 were 27.6%, 74.9%, 95.6% and 100%, respectively; (3) Atrophy: The positive rates of *H. pylori* in grades 0-3 were 54.4%, 57.3%, 65.5% and 80%, respectively; and (4) Intestinal metaplasia: The positive rates of *H. pylori* in grades 0-3 were 55.6%, 48.6%, 63.5% and 66.7%, respectively. The *H. pylori* infection rates in patients with different grades of chronic gastritis and active gastritis differed significantly (both $P < 0.001$). There was a significant difference in the *H. pylori* infection rate among patients with different grades of intestinal metaplasia, by χ^2 test ($P = 0.032$), indicating that *H. pylori* infection was associated with higher grade of chronic/active gastritis and intestinal metaplasia (Figure 4). However, there was no significant difference ($P = 0.084$ by χ^2 test) in the *H. pylori* infection rates between patients with different grades of atrophy (Table 6).

Table 5 *Helicobacter pylori* infection among main disease types diagnosed by biopsies from endoscopy in Xinjiang Uyghur Autonomous Region (*n* = 5747)

Classification of disease	Pathological diagnosis	<i>H. pylori</i> positive rate	
		IHC	IHC & ¹⁴ C UBT combined
Benign lesions	Gastritis	35.8% (1652/4609)	53.8% (2478/4609)
	Duodenal ectopic gastric mucosa	19.4% (7/36)	22.2% (8/36)
	Gastric fundic gland polyps	17.3% (76/440)	27.5% (121/440)
	Hyperplastic (regenerative) polyps	7.4% (37/502)	17.5% (88/502)
	Ulcer	50.0% (2/4)	100% (4/4)
	Xanthoma	66.7% (2/3)	100% (3/3)
Pre-malignant lesions	Barrett's esophagus	41.3% (38/92)	58.7% (54/92)
	Duodenal LGIN	100% (1/1)	100% (1/1)
	Gastric LGIN	55.6% (5/9)	55.6% (5/9)
	Esophageal HGIN	50.0% (1/2)	100% (2/2)
	Gastric HGIN	28.6% (2/7)	57.1% (4/7)
	Esophageal HGIN	0% (0/2)	0% (0/2)
Malignant tumors	Gastric adenocarcinoma	41.2% (14/34)	67.6% (23/34)
	Lymphoma	75.0% (3/4)	75% (3/4)
	Neuroendocrine tumor	0% (0/1)	0% (0/1)
	GIST	0% (0/1)	0% (0/1)

¹⁴C UBT: ¹⁴C urea breath test; HGIN: High-grade intraepithelial neoplasia; *H. pylori*: *Helicobacter pylori*; IHC: Immunohistochemistry; LGIN: Low-grade intraepithelial neoplasia; GIST: Gastrointestinal stromal tumor.

DISCUSSION

For diagnosis of *H. pylori* infection, both invasive and noninvasive tests are used. Histology with special stains, rapid urease tests (RUTs), bacterial culture, and polymerase chain reaction (PCR) are examples of invasive tests, which require endoscopy and biopsy. Although PCR-based methods were proposed as gold standard tests[10], expensive, complex, and time-consuming methods, they were not widely used for screening, and were preferred for cases when an etiological role of *H. pylori* was clinically suggested but histopathological confirmation was not possible[21]. To increase the specificity of the histological test, special stains such as modified Giemsa stain, Warthin-Starry Silver stain, and immunohistochemical stain can be used, and IHC is considered to be the most reasonable histological method[21-23]. Serology, stool antigen testing, and UBT are examples of noninvasive tests[24]. UBT is often considered as the gold standard diagnostic test for *H. pylori* infection[10], and consistently produces better results in comparison to many other available tests. IHC and ¹⁴C UBT are most widely used in our hospital for routine screening of *H. pylori*. It was not clear whether we needed to perform the two methods simultaneously for *H. pylori* detection, and there were controversial reports about the sensitivity of IHC as being either superior[20] or inferior[19] to ¹⁴C UBT. The number of cases of the two studies mentioned above is relatively small, thus the conclusion might have coincidence or selection bias.

The novelty of our study was that it strongly proved that the sensitivity of ¹⁴C UBT was significantly higher than that of IHC. We also found about 20% inconsistency between the results of ¹⁴C UBT and IHC, although most were negative for IHC and positive for ¹⁴C UBT (> 17%). It is speculated that there is a significant focal distribution pattern of *H. pylori* infection in these cases[25,26], and the site and size of biopsy specimen obtained by endoscopic sampling are limited, causing false-negative results[24]. Our research showed that increasing the number of biopsy specimens (*n* ≥ 2) significantly improved the positive rate of *H. pylori* detection in pathological IHC methods as expected, and the greater the number of biopsy specimens, the fewer false-negative results from sampling errors[24]. However, it might be unacceptable to do multiple biopsies for almost-healthy patients. ¹⁴C UBT can overcome this drawback and reflect the overall *H. pylori* infection status in the upper gastrointestinal tract[18].

We should point out that ¹⁴C UBT might be unreliable when the reported value is around the cut-off value, and these cases might be infected with a lower density of *H. pylori*[10,27]. That could explain why a small number of cases (< 3%) were negative for ¹⁴C UBT but positive for IHC in our study. IHC is superior for tracing *H. pylori* infections in such circumstances, relying on both morphological review and the specificity of the *H. pylori* antibodies used for IHC[15]. The specificity of the primary antibody used in IHC prevents mistaking other resident or contaminating bacteria for *H. pylori*[13,15].

Table 6 Correlation between grading (chronic/active, atrophy, intestinal metaplasia grade) and *Helicobacter pylori* infection rate in gastritis

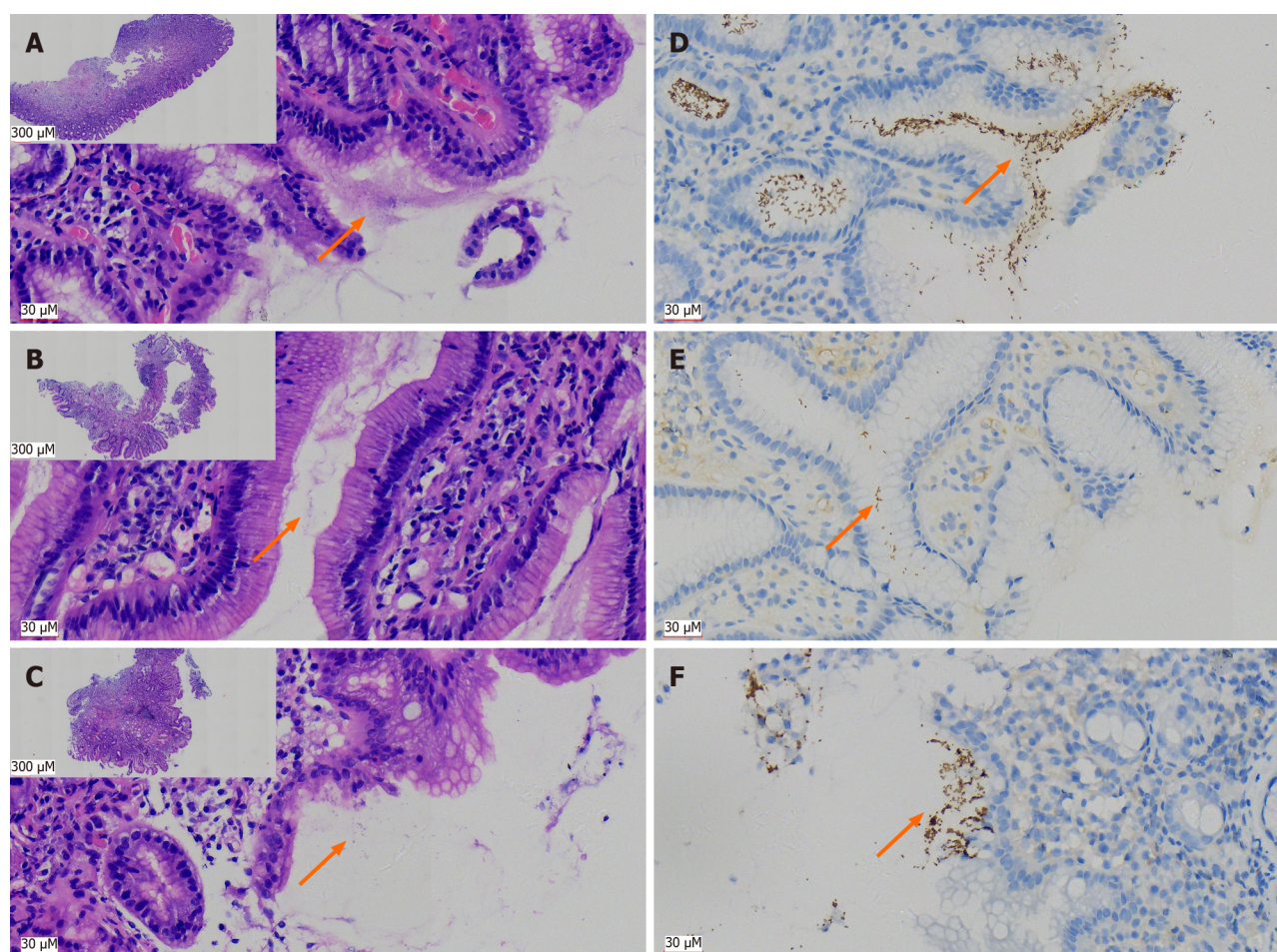
Characteristics	Grading	<i>H. pylori</i> positive rate		
		IHC	IHC & ¹⁴ C UBT combined ¹	P value
Chronic	G1	13.3% (312/2348)	29.9% (703/2348)	$P < 0.001^2$
	G2	65.6% (1110/1692)	85.2% (1441/1692)	
	G3	81.3% (148/182)	95.6% (174/182)	
Active	G0	10.5% (229/2174)	27.6% (599/2174)	$P < 0.001^2$
	G1	54.1% (626/1157)	74.9% (867/1157)	
	G2	80.3% (705/878)	95.6% (839/878)	
	G3	76.9% (10/13)	100% (13/13)	
Atrophy	G0	37.0% (1367/3697)	54.4% (2010/3697)	$P = 0.084^1$
	G1	37.2% (170/457)	57.3% (262/457)	
	G2	46.6% (27/58)	65.5% (38/58)	
	G3	60.0% (6/10)	80.0% (8/10)	
Intestinal metaplasia	G0	38.8% (1235/3183)	55.6% (1771/3183)	$P = 0.032^1$
	G1	30.9% (289/934)	48.6% (480/934)	
	G2	43.8% (42/96)	63.5% (61/96)	
	G3	44.4% (4/9)	66.7% (6/9)	

¹Fisher's exact probability method.²Pearson χ^2 test.¹⁴C UBT: ¹⁴C urea breath test; G0: Grade 0 = none; G1: Grade 1 = mild; G2: Grade 2 = moderate; G3: Grade 3 = severe; *H. pylori*: *Helicobacter pylori*; IHC: Immunohistochemistry.

We showed that although IHC gave direct evidence of *H. pylori* infection, its sensitivity was lower and there was a higher risk of false-negative results. ¹⁴C UBT is still the preferred method for detecting *H. pylori* infection clinically. However, to improve the positive rate of *H. pylori* detection, we recommend performing ¹⁴C UBT and IHC simultaneously, especially for patients unexplained gastritis, previously treated with low organism density, and with results around the cut-off value[15]. Our statistical analysis supports that the *H. pylori* positive rate can increase significantly as multiple endoscopic biopsies are submitted. One limitation of our was is that we did not perform a PCR-based method as the gold standard. However, potential pitfalls still exist with PCR methods, and more studies need to be conducted on diagnostic tests for *H. pylori* to find a reliable gold standard. Positive findings with either IHC or ¹⁴C UBT are highly specific[14,28], and are widely recognized to establish diagnosis of *H. pylori* infection[18,29,30]; thus, we focused on their sensitivity.

H. pylori infection is found worldwide, but the rate varies significantly among different countries (11%-91%)[29]. China has a high incidence of *H. pylori* infection, and it has decreased to 40%-60% after economic development and changes in lifestyle[30,31]. Our study showed that the overall infection rate of *H. pylori* in a single center in Xinjiang Uyghur Autonomous Region (Urumqi) was 48.6%, which was close to the national infection rate[30,31]. However, the infection rate was significantly higher than previously reported (36.5%) in Shihezi (located adjacent to Urumqi) in the XPCC[7]. We speculate that *H. pylori* infection was detected by morphological examination without special stains, and was lower in sensitivity. The majority of the population in Shihezi area is of Han nationality. The overall infection rate of *H. pylori* in this center was also higher than the 43.6% overall positive infection rate reported by the First Affiliated Hospital of Xinjiang Medical University in the same region of Urumqi in 2012[6], which used a combination of RUT and ¹⁴C UBT. Thus, the higher *H. pylori* positivity rate in our center was likely related to the higher sensitivity of our immunohistochemical assay compared to their RUT assay. Our overall infection rate was lower than that reported in Yili region[9], because the majority of cases in the other study were from multiple ethnic groups, whose *H. pylori* infection rate were all higher than in the Han group.

Xinjiang Uyghur Autonomous Region is a vast region with multiple ethnic groups living together. Previous reports have shown that there are differences in *H. pylori* infection rates between different genders, ages, ethnic groups, and regions[6-9]. Our single center data also showed that the overall infection rate in males was significantly higher than in females, which is consistent with reports in the Shihezi area[7]. However, these were inconsistent with the reports in the Ili area[9], with no significant gender difference. We believe that both our cases and the cases in Shihezi area were randomly enrolled with a large sample size, and the majority were Han ethnicity. The infection rate among Uyghur women in our study was also higher than in men, and the proportion of ethnic minorities in the study from Ili region[9] is



DOI: 10.3748/wjg.v29.i43.5834 Copyright ©The Author(s) 2023.

Figure 1 Immunohistochemical staining using antibodies against *Helicobacter pylori* has significant advantages over hematoxylin and eosin staining in the pathological tissue for gastroscopy biopsy. A: Distribution of curved rod-shaped bacteria [hematoxylin and eosin (H&E, 400 ×)], on the surface of glands and in the mucus of typical *Helicobacter pylori* (*H. pylori*)-positive patients in H&E section; B: A case with low bacterial count of *H. pylori* (H&E, 400 ×); C: A case with atypical *H. pylori* morphology (mainly coccoid rather than rod-shaped), which was difficult to identify (H&E, 400 ×), lower magnification figures of A-C are in the upper left corner (H&E, 40 ×); D: Immunohistochemistry (IHC) with antibodies against *H. pylori* indicated a large number of bacteria, exhibiting brown yellow deep staining (DAB, high magnification, one case the same as in A); E: IHC displayed *H. pylori* bacilli more clearly than H&E due to a lower bacterial count (DAB staining, high magnification, one case the same as in B); F: Atypical coccoid *H. pylori* were clearly present and confirmed by IHC (DAB staining, high magnification, one case the same as in C); orange arrows in A-F indicate distribution of *H. pylori*.

larger than in our cases from Urumqi.

From a perspective of regional difference, patients from southern Xinjiang had the highest positive rate of *H. pylori* infection, followed by patients from northern Xinjiang, and patients from the XPCC had the lowest *H. pylori* infection rate. We speculate that it may be related to the fact that southern Xinjiang is mainly inhabited by Uyghur ethnic groups, while northern Xinjiang is mainly inhabited by Han ethnic groups, as is the XPCC[7].

These results mentioned above suggest that ethnic difference is the most important cause of difference in *H. pylori* infection rate, which was confirmed by our matched comparative analysis. The differences in ethnicity might be one of the most important factors affecting the epidemic characteristics of *H. pylori* infection. The positive rate for *H. pylori* obtained by combining the two most sensitive methods in Uyghur was 75.3%, which was higher than previously reported (59.8%–62.38%)[6,8,9], indicating that the prevention and control for *H. pylori* infection in Uyghur people might be more challenging.

In addition, regardless of the Uyghur or Han ethnic groups, the *H. pylori* infection rate calculated by age group showed a decreasing trend as age increased. In the Han ethnic group, there was an increase after the age of 70 years, which is consistent with previous reports[6,32,33], indicating that we might need to eradicate *H. pylori* infection in young people as early as possible.

Since our hospital is a general hospital focused on traditional Chinese medicine, the majority of patients have mild stomach discomfort. Overall, benign inflammatory lesions were the main cause (> 90%) in this continuous randomized study. Therefore, there were few cases of malignant lesions such as gastric adenocarcinoma included in this study. Malignant tumors have a closer correlation with *H. pylori* infection, with over two-thirds of gastric adenocarcinoma cases and 75% of lymphoma cases having *H. pylori* infection. According to the literature, eradicating *H. pylori* in the first-degree relatives of gastric cancer patients is an important factor in reducing the incidence of gastric cancer[34]. In addition, *H. pylori*-related gastric lymphoma patients can achieve complete remission by eradicating *H. pylori*[35,36]. BE is a precancerous lesion.

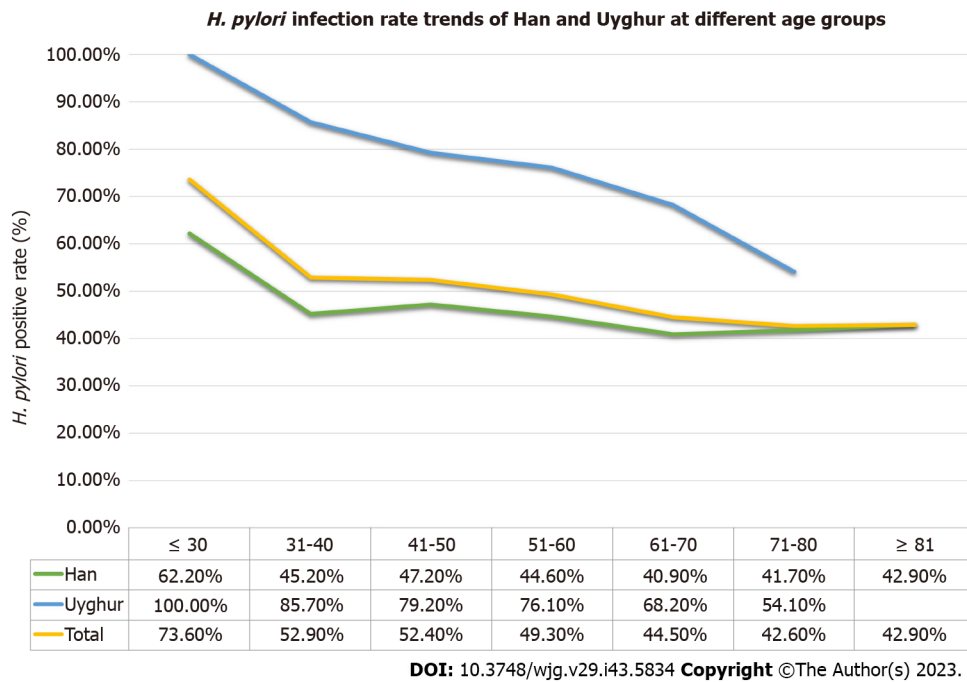
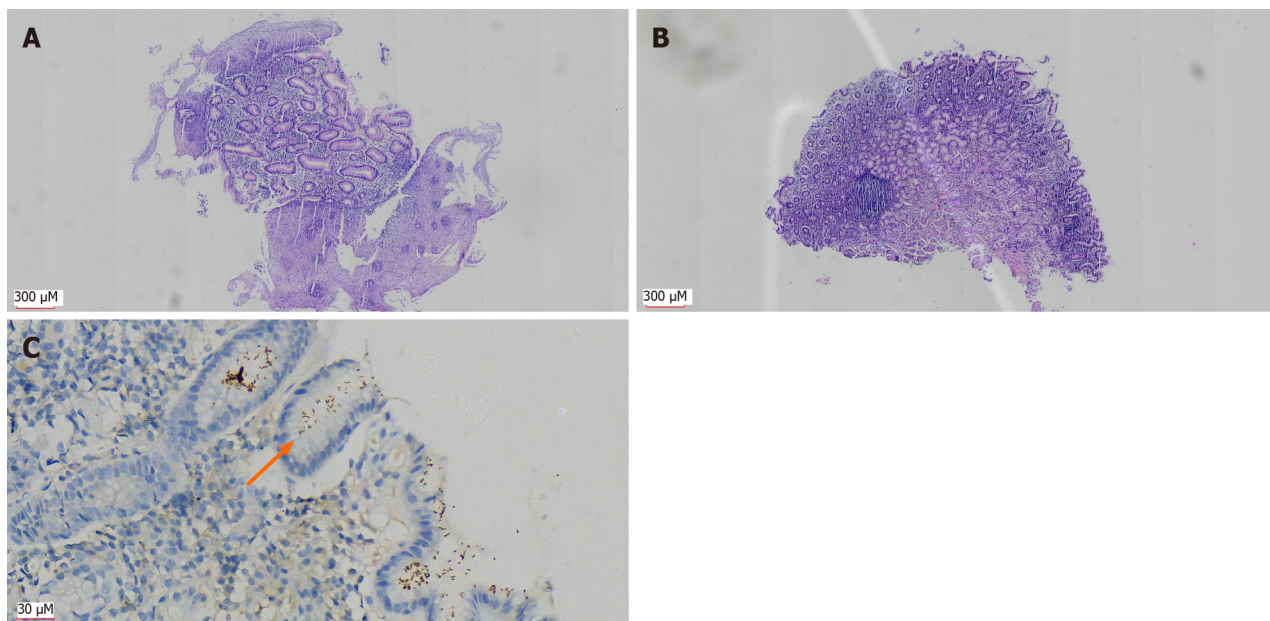


Figure 2 *Helicobacter pylori* positive rate changed with age in Xinjiang Uyghur Autonomous Region. Regardless of the Uyghur, Han or the overall series, the *Helicobacter pylori* (*H. pylori*) infection rates calculated by age group showed a decreasing trend as age increased. In Han group, the positive rate of *H. pylori* infection increased in two age groups after the age of 70 years. *H. pylori*: *Helicobacter pylori*.

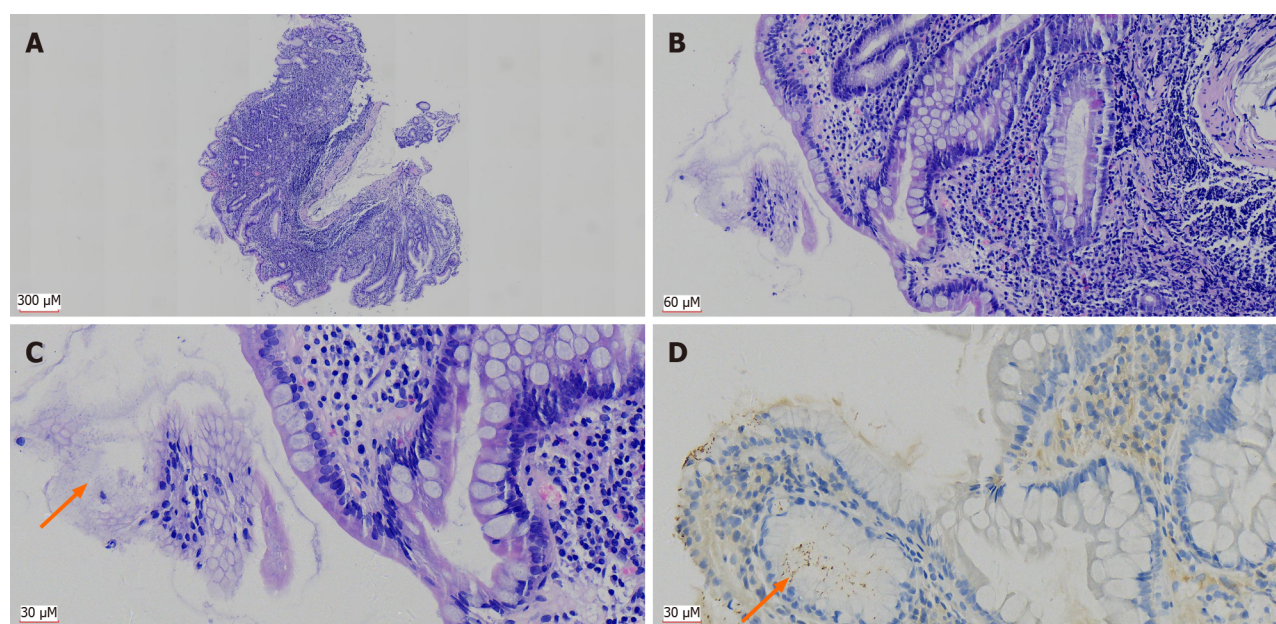


DOI: 10.3748/wjg.v29.i43.5834 Copyright ©The Author(s) 2023.

Figure 3 Patients with Barrett's esophagus concurrent with *Helicobacter pylori* infection. A: Changes with Barrett's esophagus: Many hyperplastic glands in the esophageal wall, partially replacing the squamous epithelial mucosa [hematoxylin and eosin (H&E, 40 ×)]; B: Mild inflammation (H&E, 40 ×) in the gastric wall tissue biopsied simultaneously; C: Immunohistochemistry showing *Helicobacter pylori* (*H. pylori*) infection (DAB, 400 ×); orange arrow in C indicates distribution of *H. pylori*.

cerous lesion and some studies have shown that *H. pylori* infection and BE are inversely related[37,38]. The *H. pylori* infection rate (58.7%) was higher than the overall positive level, and BE may be related to *H. pylori* infection; however, the positive association between *H. pylori* infection and BE seemed to be a paradox. Well-designed prospective cohort studies with a powered sample size are required[39].

For gastritis, the *H. pylori* infection rate significantly increased with grade of chronic/active gastritis, and intestinal metaplasia grading. Infection with *H. pylori* may be an important factor leading to gastritis and intestinal metaplasia[40]. Eradicating *H. pylori* can improve the inflammatory response of the gastric mucosa, prevent or delay development of atrophy and intestinal metaplasia[40,41], block the Correa mode of intestinal gastric cancer evolution, and eliminate the



DOI: 10.3748/wjg.v29.i43.5834 Copyright ©The Author(s) 2023.

Figure 4 *Helicobacter pylori* infection associated with elevated grade of chronic/active gastritis and intestinal metaplasia. A: Patient with severe chronic gastritis (grade 3) in the gastric wall biopsy tissue; inflammatory cell infiltration can be seen throughout the lamina propria of the mucosa [hematoxylin and eosin (H&E, 40 ×)]; B: Infiltrating inflammatory cells were mainly lymphocytes, with scattered neutrophils, indicating chronic gastritis combined with active gastritis (H&E, 200 ×); C: Gastric glands were infected by *Helicobacter pylori* (*H. pylori*) and were accompanied by severe intestinal metaplasia (H&E, 400 ×); D: *H. pylori* infection was confirmed by immunohistochemistry (DAB, 400 ×); all images were from the same patient, orange arrows in C and D indicates distribution of *H. pylori*.

risk of (intestinal) gastric cancer[18,29,33,34]. By combining the IHC and ^{14}C UBT results, we can obtain a better linear correlation between *H. pylori* infection and severity of gastritis, thus it is important to use two diagnostic tests at the same time.

CONCLUSION

Our results show that the sensitivity of ^{14}C UBT for detecting *H. pylori* is significantly higher than that of IHC with pathological specimens obtained by gastroscopy. The combination of ^{14}C UBT and IHC is necessary to improve the detection rate of *H. pylori* infection, and increasing the number of biopsy specimen (≥ 2) can significantly improve the positive rate of *H. pylori* detection in pathological immunohistochemical methods. The overall *H. pylori* infection rate in Xinjiang Uyghur Autonomous Region was higher than previously reported, and ethnicity was the most important factor for detection by combination of the two methods. Uyghur people have a higher *H. pylori* infection rate. The overall *H. pylori* infection rate calculated by age group showed a decreasing trend as age increased. Therefore, the key populations for the prevention and control of *H. pylori* infection in Xinjiang Uyghur Autonomous Region are the Uyghur and young people.

ARTICLE HIGHLIGHTS

Research background

There are differences in *Helicobacter pylori* (*H. pylori*) infection rate in Uyghur and Han ethnic groups. ^{14}C urea breath test (^{14}C UBT) and immunohistochemistry (IHC) with tissue from gastroscopic biopsy are widely used detection methods, but both lack large cohort studies to accurately evaluate their performance.

Research motivation

To compare the difference between ^{14}C UBT and IHC for accurate testing for *H. pylori* infection, and to study the difference in infection positive rate between Uyghur and Han ethnic groups.

Research objectives

We included 5747 cases with *H. pylori* infection detected by both IHC and ^{14}C UBT. We detected 3944 by simultaneous IHC and ^{14}C UBT and 555 pairs of Han/Uyghur were compared for their *H. pylori* infection rate.

Research methods

IHC and ^{14}C UBT were performed at the same time (interval < 1 wk, with sampling site including gastric antrum), and 3944 cases were screened out. The overall *H. pylori* infection positive rate was calculated by combining IHC and ^{14}C UBT results ($n = 5747$). Correlation between *H. pylori* infection and patients' clinical parameters (gender, age, ethnicity and region) was analyzed. 555 pairs of Han/Uyghur cases (completely matched for gender and age) were compared for their *H. pylori* infection rates. The *H. pylori* infection rate and pathological diagnosis, including gastritis (chronic/active inflammation, atrophy, and intestinal metaplasia), were analyzed.

Research results

Among the 3944 cases for which ^{14}C UBT and IHC were performed at the same time, the sensitivity was 94.9% for ^{14}C UBT and 65.1% for IHC, which was a significant difference ($P < 0.001$). Among those positive by ^{14}C UBT (detection value > 100), the *H. pylori* positive rate with IHC was 63.2%, and among those negative for ^{14}C UBT (detection value ≤ 100), the IHC positive rate was 4.8%. In combination with both detection methods, the total rate of *H. pylori* infection in all 5747 patients was 48.6%, and there were significant differences for gender, age, ethnicity, and region (P values were 0.001, < 0.001, < 0.001 and < 0.001). The *H. pylori* infection rates for the 555 Chinese/Uyghur paired cases (completely matched for gender and age) were 41.4% and 73.3%, which was a significant difference ($P < 0.001$). For benign gastric lesions, the combined *H. pylori* infection rate was 53.8% for inflammation, 27.5% for fundus gland polyps, 22.2% for duodenal ectopic gastric mucosa, 17.5% for hyperplastic polyps, 58.7% for BE, and 67.6% for gastric adenocarcinoma. Positivity for *H. pylori* infection was significantly related to moderate-severe (grade 2-3) chronic inflammation, moderate-severe active inflammation and moderate-severe (grade 2-3) intestinal metaplasia ($P < 0.001$, < 0.001 and 0.032 in order).

Research conclusions

The sensitivity of ^{14}C UBT was significantly higher than that of IHC when detecting *H. pylori* infection, but there were still *H. pylori* positive cases missed that were detected by IHC. Combination of both methods can increase the detection accuracy of *H. pylori* infection, and the overall infection rate of *H. pylori* in our study was higher than previously reported in Xinjiang Uyghur Autonomous Region. Ethnic difference was the most important factor affecting the *H. pylori* infection rate, and the Uyghur people had more *H. pylori* infection. The *H. pylori* infection rate decreased with age, and was more correlated with precancerous lesions and malignant tumors, and increased with severity of inflammation.

Research perspectives

Our study highlights the importance of using IHC and ^{14}C UBT together for *H. pylori* infection, and the prevention and intervention of *H. pylori* infection in Xinjiang Uyghur Autonomous Region and emphasizes that the Uyghur and young people should be examined as early as possible.

FOOTNOTES

Co-first authors: Yu-Hua Peng and Xue Feng.

Author contributions: Peng YH and Feng X collected samples and clinicopathological data, participated in the data analysis and drafted the manuscript; Zhou Z finished the pathological experimental procedures; Yang L performed the statistical analysis; Shi YF designed and supervised the study, revised the manuscript; and all authors read and approved the final manuscript.

Institutional review board statement: The study was approved by the Science and Research Office of Traditional Chinese Medical Hospital of Xinjiang Medical University (Urumqi).

Informed consent statement: As a pure retrospective study, and no intervention and impacts on the diagnosis and treatment of the patients involved, informed consent in our study was waived as approved by the Ethics Committee of the hospital.

Conflict-of-interest statement: All the authors report no relevant conflicts of interest for this article.

Data sharing statement: No additional data are available.

STROBE statement: The authors have read the STROBE Statement-checklist of items, and the manuscript was prepared and revised according to the STROBE Statement-checklist of items.

Open-Access: This article is an open-access article that was selected by an in-house editor and fully peer-reviewed by external reviewers. It is distributed in accordance with the Creative Commons Attribution NonCommercial (CC BY-NC 4.0) license, which permits others to distribute, remix, adapt, build upon this work non-commercially, and license their derivative works on different terms, provided the original work is properly cited and the use is non-commercial. See: <https://creativecommons.org/licenses/by-nc/4.0/>

Country/Territory of origin: China

ORCID number: Yu-Hua Peng 0009-0002-1297-063X; Xue Feng 0009-0005-6672-1913; Zhong Zhou 0009-0007-8179-8147; Lei Yang 0000-0002-9514-3789; Yun-Fei Shi 0000-0002-0417-5727.

S-Editor: Wang JJ

L-Editor: A

P-Editor: Yuan YY

REFERENCES

- Duan M, Li Y, Liu J, Zhang W, Dong Y, Han Z, Wan M, Lin M, Lin B, Kong Q, Ding Y, Yang X, Zuo X. Transmission routes and patterns of helicobacter pylori. *Helicobacter* 2023; **28**: e12945 [PMID: 36645421 DOI: 10.1111/hel.12945]
- Warren JR, Marshall B. Unidentified curved bacilli on gastric epithelium in active chronic gastritis. *Lancet* 1983; **1**: 1273-1275 [PMID: 6134060 DOI: 10.1016/S0140-6736(83)92719-8]
- Møller H, Heseltine E, Vainio H. Working group report on schistosomes, liver flukes and *Helicobacter pylori*. *Int J Cancer* 1995; **60**: 587-589 [PMID: 7860130 DOI: 10.1002/ijc.2910600502]
- Sugano K, Tack J, Kuipers EJ, Graham DY, El-Omar EM, Miura S, Haruma K, Asaka M, Uemura N, Malfertheiner P; faculty members of Kyoto Global Consensus Conference. Kyoto global consensus report on *Helicobacter pylori* gastritis. *Gut* 2015; **64**: 1353-1367 [PMID: 26187502 DOI: 10.1136/gutjnl-2015-309252]
- Epidemiology of, and risk factors for, *Helicobacter pylori* infection among 3194 asymptomatic subjects in 17 populations. The EUROGAST Study Group. *Gut* 1993; **34**: 1672-1676 [PMID: 8282253 DOI: 10.1136/gut.34.12.1672]
- Aisikaier A, Maimaitiursun M, Xie ZH. *Helicobacter pylori* Infection and Associated Diseases and Risk Factors Analysis among Xinjiang Uyghur, Han, Kazak Ethnic People. *Xinjiang Med J* 2012; **42**: 4-9
- Qi XY, Li R, Chen WG, Tian SX, Liu F, Han YZ, Ruan KX, Zheng Y, Shang GC. Analysis of *Helicobacter pylori* infection about 25699 cases by gastroscopy examination in Shihezi region, Xinjiang. *Shandong Med J* 2012; 32-34
- Freedland SJ, Aronson WJ. Commentary on "Integrative clinical genomics of advanced prostate cancer". Robinson D, Van Allen EM, Wu YM, Schultz N, Lonigro RJ, Mosquera JM, Montgomery B, Taplin ME, Pritchard CC, Attard G, Beltran H, Abida W, Bradley RK, Vinson J, Cao X, Vats P, Kunju LP, Hussain M, Feng FY, Tomlins SA, Cooney KA, Smith DC, Brennan C, Siddiqui J, Mehra R, Chen Y, Rathkopf DE, Morris MJ, Solomon SB, Durack JC, Reuter VE, Gopalan A, Gao J, Loda M, Lis RT, Bowden M, Balk SP, Gaviola G, Sougnez C, Gupta M, Yu EY, Mostaghel EA, Cheng HH, Mulcahy H, True LD, Plymate SR, Dvinge H, Ferraldeschi R, Flohr P, Miranda S, Zafeiriou Z, Tunariu N, Mateo J, Perez-Lopez R, Demichelis F, Robinson BD, Schiffman M, Nanus DM, Tagawa ST, Sigaras A, Eng KW, Elemento O, Sboner A, Heath EI, Scher HI, Pienta KJ, Kantoff P, de Bono JS, Rubin MA, Nelson PS, Garraway LA, Sawyers CL, Chinnaiyan AM. *Cell*. 21 May 2015; 161(5): 1215-1228. *Urol Oncol* 2017; **35**: 535 [PMID: 28623072 DOI: 10.1016/j.urolonc.2017.05.010]
- Huo XL, Qin J, Zhang W, Zhang WZ, Zhu XL, Dou YQ, Ye NN. Factors related to rate of *Helicobacter pylori* infection in patients with upper gastrointestinal tract diseases in Yili. *World Chinese J Digestol* 2013; **21**: 1568-1572 [DOI: 10.11569/wcj.v21.i16.1568]
- Patel SK, Pratap CB, Jain AK, Gulati AK, Nath G. Diagnosis of *Helicobacter pylori*: what should be the gold standard? *World J Gastroenterol* 2014; **20**: 12847-12859 [PMID: 25278682 DOI: 10.3748/wjg.v20.i36.12847]
- Wang YK, Kuo FC, Liu CJ, Wu MC, Shih HY, Wang SS, Wu JY, Kuo CH, Huang YK, Wu DC. Diagnosis of *Helicobacter pylori* infection: Current options and developments. *World J Gastroenterol* 2015; **21**: 11221-11235 [PMID: 26523098 DOI: 10.3748/wjg.v21.i40.11221]
- Kalali B, Formichella L, Gerhard M. Diagnosis of *Helicobacter pylori*: Changes towards the Future. *Diseases* 2015; **3**: 122-135 [PMID: 28943614 DOI: 10.3390/diseases3030122]
- Benoit A, Hoyerau N, Fléjou JF. Diagnosis of *Helicobacter pylori* infection on gastric biopsies: Standard stain, special stain or immunohistochemistry? *Ann Pathol* 2018; **38**: 363-369 [PMID: 29853336 DOI: 10.1016/j.annpat.2018.03.009]
- Kocsár É, Szirtes I, Kramer Z, Szijártó A, Bene L, Buzás GM, Kenessey I, Bronsert P, Csanadi A, Lutz L, Werner M, Wellner UF, Kiss A, Schaff Z, Lotz G. Sensitivity of *Helicobacter pylori* detection by Giemsa staining is poor in comparison with immunohistochemistry and fluorescent in situ hybridization and strongly depends on inflammatory activity. *Helicobacter* 2017; **22** [PMID: 28402048 DOI: 10.1111/hel.12387]
- Wang XI, Zhang S, Abreo F, Thomas J. The role of routine immunohistochemistry for *Helicobacter pylori* in gastric biopsy. *Ann Diagn Pathol* 2010; **14**: 256-259 [PMID: 20637430 DOI: 10.1016/j.anndiagpath.2010.05.002]
- Helicobacter pylori Study Group, Chinese Society of Gastroenterology; Chinese Medical Association. Sixth Chinese national consensus report on the management of *Helicobacter pylori* infection (treatment excluded). *Chinese J Digest* 2022
- Godbole G, Mégraud F, Bessède E. Review: Diagnosis of *Helicobacter pylori* infection. *Helicobacter* 2020; **25** Suppl 1: e12735 [PMID: 32918354 DOI: 10.1111/hel.12735]
- Shakir SM, Shakir FA, Couturier MR. Updates to the Diagnosis and Clinical Management of *Helicobacter pylori* Infections. *Clin Chem* 2023; **69**: 869-880 [PMID: 37473423 DOI: 10.1093/clinchem/hvad081]
- Dechant FX, Dechant R, Kandulski A, Selgrad M, Weber F, Reischl U, Wilczek W, Mueller M, Weigand K. Accuracy of Different Rapid Urease Tests in Comparison with Histopathology in Patients with Endoscopic Signs of Gastritis. *Digestion* 2020; **101**: 184-190 [PMID: 30820016 DOI: 10.1159/000497810]
- Wan WS, Wang L, Hu YC, Liu YF, Zheng DP, Hu QL. Comparison of immunohistochemical stain and 14C urea breath test in the diagnosis of helicobacter pylori associated gastritis. *Chinese J Clin Experiment Pathol* 2019; **35**: 47-50 [DOI: 10.13315/j.cnki.cjcep.2019.01.011]
- Daugule I, Megraud F, Leja M. Reply to Kocsár, É.; Lotz, G. Comment on "Skrebinska *et al.* Who Could Be Blamed in the Case of Discrepant Histology and Serology Results for *Helicobacter pylori* Detection? *Diagnostics* 2022, 12, 133". *Diagnostics (Basel)* 2023; **13** [PMID: 37443667 DOI: 10.3390/diagnostics13132273]
- Wan W, Wang L, Liu Y, Hu Y. Improving the detection of *Helicobacter pylori* in biopsies of chronic gastritis: a comparative analysis of H&E, methylene blue, Warthin-Starry, immunohistochemistry, and quantum dots immunohistochemistry. *Front Oncol* 2023; **13**: 1229871 [PMID: 37534240 DOI: 10.3389/fonc.2023.1229871]
- Urgessa NA, Geethakumari P, Kampa P, Parchuri R, Bhandari R, Alnasser AR, Akram A, Kar S, Osman F, Mashat GD, Tran HH, Arcia Franchini AP. A Comparison Between Histology and Rapid Urease Test in the Diagnosis of *Helicobacter Pylori* in Gastric Biopsies: A Systematic Review. *Cureus* 2023; **15**: e39360 [PMID: 37362532 DOI: 10.7759/cureus.39360]

- 24 Lee JH, Park YS, Choi KS, Kim DH, Choi KD, Song HJ, Lee GH, Jang SJ, Jung HY, Kim JH. Optimal biopsy site for *Helicobacter pylori* detection during endoscopic mucosectomy in patients with extensive gastric atrophy. *Helicobacter* 2012; **17**: 405-410 [PMID: 23066901 DOI: 10.1111/j.1523-5378.2012.00972.x]
- 25 Lee JY, Kim N. Diagnosis of *Helicobacter pylori* by invasive test: histology. *Ann Transl Med* 2015; **3**: 10 [PMID: 25705642 DOI: 10.3978/j.issn.2305-5839.2014.11.03]
- 26 Kobayashi D, Eishi Y, Ohkusa T, Ishige I, Suzuki T, Minami J, Yamada T, Takizawa T, Koike M. Gastric mucosal density of *Helicobacter pylori* estimated by real-time PCR compared with results of urea breath test and histological grading. *J Med Microbiol* 2002; **51**: 305-311 [PMID: 11926735 DOI: 10.1099/0022-1317-51-4-305]
- 27 Perri F. Diagnosis of *Helicobacter pylori* infection: which is the best test? The urea breath test. *Dig Liver Dis* 2000; **32** Suppl 3: S196-S198 [PMID: 11245294 DOI: 10.1016/s1590-8658(00)80277-7]
- 28 Ji YH, Shi YM, Hei QW, Sun JM, Yang XF, Wu T, Sun DL, Qi YX. Evaluation of guidelines for diagnosis and treatment of *Helicobacter pylori* infection. *Helicobacter* 2023; **28**: e12937 [PMID: 36408808 DOI: 10.1111/hel.12937]
- 29 Cho JH, Jin SY. Current guidelines for *Helicobacter pylori* treatment in East Asia 2022: Differences among China, Japan, and South Korea. *World J Clin Cases* 2022; **10**: 6349-6359 [PMID: 35979311 DOI: 10.12998/wjcc.v10.i19.6349]
- 30 Xie C, Lu NH. Review: clinical management of *Helicobacter pylori* infection in China. *Helicobacter* 2015; **20**: 1-10 [PMID: 25382801 DOI: 10.1111/hel.12178]
- 31 Mitchell HM, Li YY, Hu PJ, Liu Q, Chen M, Du GG, Wang ZJ, Lee A, Hazell SL. Epidemiology of *Helicobacter pylori* in southern China: identification of early childhood as the critical period for acquisition. *J Infect Dis* 1992; **166**: 149-153 [PMID: 1607687 DOI: 10.1093/infdis/166.1.149]
- 32 Marginean CM, Ciobaata R, Olteanu M, Vasile CM, Popescu M, Popescu AIS, Bondari S, Pircoveanu D, Marginean IC, Iacob GA, Popescu MD, Stanciu M, Mitrut P. The Importance of Accurate Early Diagnosis and Eradication in *Helicobacter pylori* Infection: Pictorial Summary Review in Children and Adults. *Antibiotics (Basel)* 2022; **12** [PMID: 36671261 DOI: 10.3390/antibiotics12010060]
- 33 Suzuki H, Mori H. World trends for *H. pylori* eradication therapy and gastric cancer prevention strategy by *H. pylori* test-and-treat. *J Gastroenterol* 2018; **53**: 354-361 [PMID: 29138921 DOI: 10.1007/s00535-017-1407-1]
- 34 Cavanna L, Pagani R, Seghini P, Zangrandi A, Paties C. High grade B-cell gastric lymphoma with complete pathologic remission after eradication of *Helicobacter pylori* infection: report of a case and review of the literature. *World J Surg Oncol* 2008; **6**: 35 [PMID: 18353178 DOI: 10.1186/1477-7819-6-35]
- 35 Hu Q, Zhang Y, Zhang X, Fu K. Gastric mucosa-associated lymphoid tissue lymphoma and *Helicobacter pylori* infection: a review of current diagnosis and management. *Biomark Res* 2016; **4**: 15 [PMID: 27468353 DOI: 10.1186/s40364-016-0068-1]
- 36 Wang C, Yuan Y, Hunt RH. *Helicobacter pylori* infection and Barrett's esophagus: a systematic review and meta-analysis. *Am J Gastroenterol* 2009; **104**: 492-500; quiz 491, 501 [PMID: 19174811 DOI: 10.1038/ajg.2008.37]
- 37 Fujita M, Nakamura Y, Kasashima S, Furukawa M, Misaka R, Nagahara H. Risk factors associated with Barrett's epithelial dysplasia. *World J Gastroenterol* 2014; **20**: 4353-4361 [PMID: 24764673 DOI: 10.3748/wjg.v20.i15.4353]
- 38 Polyzos SA, Zeglinas C, Artemaki F, Doulberis M, Kazakos E, Katsinelos P, Kountouras J. *Helicobacter pylori* infection and esophageal adenocarcinoma: a review and a personal view. *Ann Gastroenterol* 2018; **31**: 8-13 [PMID: 29333062 DOI: 10.20524/aog.2017.0213]
- 39 Toyokawa T, Suwaki K, Miyake Y, Nakatsu M, Ando M. Eradication of *Helicobacter pylori* infection improved gastric mucosal atrophy and prevented progression of intestinal metaplasia, especially in the elderly population: a long-term prospective cohort study. *J Gastroenterol Hepatol* 2010; **25**: 544-547 [PMID: 19817964 DOI: 10.1111/j.1440-1746.2009.05995.x]
- 40 Vázquez Romero M, Boixeda de Miquel D, Valer López-Fando MP, Albéniz Arbizu E, González Alonso R, Bermejo San José F. Intestinal metaplasia: evolution after *Helicobacter pylori* eradication and influence in the success of eradicating therapy. *Rev Esp Enferm Dig* 2003; **95**: 781-784, 777 [PMID: 14640875]
- 41 Crafa P, Russo M, Miraglia C, Barchi A, Moccia F, Nouvenne A, Leandro G, Meschi T, De' Angelis GL, Di Mario F. From Sidney to OLGA: an overview of atrophic gastritis. *Acta Biomed* 2018; **89**: 93-99 [PMID: 30561425 DOI: 10.23750/abm.v89i8-S.7946]



Published by **Baishideng Publishing Group Inc**
7041 Koll Center Parkway, Suite 160, Pleasanton, CA 94566, USA

Telephone: +1-925-3991568

E-mail: bpgoffice@wjgnet.com

Help Desk: <https://www.f6publishing.com/helpdesk>

<https://www.wjgnet.com>

