



## Retrospective Study

# Novel prognostic score based on the preoperative total bilirubin-albumin ratio and fibrinogen-albumin ratio in ampullary adenocarcinoma

Xiao-Jie Zhang, He Fei, Chong-Yuan Sun, Ze-Feng Li, Zheng Li, Chun-Guang Guo, Dong-Bing Zhao

**Specialty type:** Gastroenterology and hepatology

**Provenance and peer review:**

Unsolicited article; Externally peer reviewed.

**Peer-review model:** Single blind

**Peer-review report's scientific quality classification**

Grade A (Excellent): A

Grade B (Very good): 0

Grade C (Good): C

Grade D (Fair): 0

Grade E (Poor): 0

**P-Reviewer:** Aoki H, Japan;  
Arigami T, Japan

**Received:** July 3, 2023

**Peer-review started:** July 3, 2023

**First decision:** August 17, 2023

**Revised:** August 22, 2023

**Accepted:** September 4, 2023

**Article in press:** September 4, 2023

**Published online:** October 27, 2023



**Xiao-Jie Zhang, He Fei, Chong-Yuan Sun, Ze-Feng Li, Zheng Li, Chun-Guang Guo, Dong-Bing Zhao,** Department of Pancreatic and Gastric Surgical Oncology, National Cancer Center/National Clinical Research Center for Cancer/Cancer Hospital, Chinese Academy of Medical Sciences and Peking Union Medical College, Beijing 100021, China

**Corresponding author:** Dong-Bing Zhao, MD, Doctor, Department of Pancreatic and Gastric Surgical Oncology, National Cancer Center/National Clinical Research Center for Cancer/Cancer Hospital, Chinese Academy of Medical Sciences and Peking Union Medical College, No. 17 Panjiayuan Nanli, Chaoyang District, Beijing 100021, China. [dbzhao@cicams.ac.cn](mailto:dbzhao@cicams.ac.cn)

## Abstract

### BACKGROUND

The preoperative total bilirubin-albumin ratio (TBAR) and fibrinogen-albumin ratio (FAR) have been proven to be valuable prognostic factors in various cancers.

### AIM

To detect the prognostic value of TBAR and FAR in ampullary adenocarcinoma (AC) patients who underwent curative pancreaticoduodenectomy.

### METHODS

AC patients who underwent curative pancreaticoduodenectomy in the National Cancer Center of China between 1998 and 2020 were retrospectively reviewed. The prognostic cutoff values of TBAR and FAR were determined through the best survival separation model. Then, a novel prognostic score combining TBAR and FAR was calculated and validated through the logistic regression analysis and Cox regression analysis.

### RESULTS

A total of 188 AC patients were enrolled in the current study. The best cutoff values of TBAR and FAR for predicting overall survival were 1.7943 and 0.1329, respectively. AC patients were divided into a TBAR-low group (score = 0) vs a TBAR-high group (score = 1) and a FAR-low group (score = 0) vs a FAR-high group (score = 1). The total score was calculated as a novel prognostic factor. Multivariable logistic regression analysis revealed that a high score was an independent protective factor for recurrence [score = 1 vs score = 0: Odds ratio

(OR) = 0.517,  $P = 0.046$ ; score = 2 *vs* score = 0 OR = 0.236,  $P = 0.038$ ]. In addition, multivariable survival analysis also demonstrated that a high score was an independent protective factor in AC patients (score = 2 *vs* score = 0: Hazard ratio = 0.230,  $P = 0.046$ ).

## CONCLUSION

A novel prognostic score based on preoperative TBAR and FAR has been demonstrated to have good predictive power in AC patients who underwent curative pancreaticoduodenectomy. However, more studies with larger samples are needed to validate this conclusion.

**Key Words:** Ampullary adenocarcinoma; Total bilirubin-albumin ratio; Fibrinogen-albumin ratio; Recurrence; Overall survival

©The Author(s) 2023. Published by Baishideng Publishing Group Inc. All rights reserved.

**Core Tip:** Considering that effective prognostic predictors are still lacking for ampullary carcinoma, we conducted a retrospective study to elucidate the prognostic value of total bilirubin-albumin ratio (TBAR) and fibrinogen-albumin ratio (FAR) in ampullary adenocarcinoma (AC) patients who underwent curative pancreaticoduodenectomy. We found that the novel prognostic score based on the preoperative TBAR and FAR was an independent predictor for tumor recurrence and an independent protective factor for overall survival in AC patients who underwent curative pancreaticoduodenectomy.

**Citation:** Zhang XJ, Fei H, Sun CY, Li ZF, Li Z, Guo CG, Zhao DB. Novel prognostic score based on the preoperative total bilirubin-albumin ratio and fibrinogen-albumin ratio in ampullary adenocarcinoma. *World J Gastrointest Surg* 2023; 15(10): 2247-2258

**URL:** <https://www.wjgnet.com/1948-9366/full/v15/i10/2247.htm>

**DOI:** <https://dx.doi.org/10.4240/wjgs.v15.i10.2247>

## INTRODUCTION

Ampullary adenocarcinoma (AC) is an uncommon malignant digestive adenocarcinoma and accounts for approximately 0.2% of all digestive malignancies[1]. Radical surgery is the only potential curative treatment for AC patients[2]. It has been reported that the 5-year survival rate of AC patients after surgery is 45%, and postoperative recurrence and metastasis are the main factors affecting the prognosis of AC patients[1,3]. Unfortunately, effective prognostic predictors are still lacking, especially perioperative peripheral blood biomarkers.

Preoperative total bilirubin (TB) is a critical biomarker for the diagnosis of biliary obstruction and is present at the first diagnosis for the majority of AC patients. In addition, preoperative albumin has been widely used for defining immune and nutritional statuses[4]. Recently, several studies have proven that the preoperative fibrinogen-albumin ratio (FAR) is a significant prognostic biomarker in multiple tumor types, including lung cancer[5], hepatocellular carcinoma[6], colorectal cancer[7], gastric cancer[8], bladder cancer[9], and rectal cancer[10]. However, whether the relationship of preoperative TB, fibrinogen, and albumin could be used as prognostic factors is still debated. Therefore, in the current study, we aimed to explore the relationship among the preoperative TB-albumin ratio (TBAR), FAR, and long-term prognosis in AC patients based on a high-volume retrospective cohort in the National Cancer Center of China.

## MATERIALS AND METHODS

### Patients

AC patients who received curative surgery at the National Cancer Center of China between 1998 and 2020 were retrospectively reviewed. The main inclusion criteria were as follows: (1) Patients who were pathologically confirmed as having AC; (2) patients who received pancreaticoduodenectomy; and (3) patients with negative surgical margins. The main exclusion criteria were as follows: (1) Patients who died within one month after surgery; (2) patients who were lost to follow-up; (3) patients whose critical clinical information was missing; and (4) patients for whom preoperative TBAR and FAR were unavailable. As this was a retrospective cohort study, ethical exemption and informed consent exemption were obtained from the Ethics Committee of Cancer Hospital, Chinese Academy of Medical Sciences and Peking Union Medical College.

### Calculation of preoperative TBAR and FAR

The TBAR was calculated as preoperative TB ( $\mu\text{mol/L}$ ) divided by preoperative albumin ( $\text{g/L}$ ). The FAR was calculated as preoperative fibrinogen ( $\text{g/L}$ ) divided by preoperative albumin ( $\text{g/L}$ ).

### Follow-up

The postoperative follow-up was performed through telephone review, clinic visits, and the death registration system. The last follow-up time was December 2021. None of the patients was lost to follow-up. The median follow-up time was 36 mo.

### Statistical analysis

All categorical variables are expressed as frequencies (percentages), and continuous variables are expressed as medians (interquartile ranges). The  $\chi^2$  test or Fisher's exact test was used for comparison of categorical variable groups, and the Mann-Whitney *U* test was used for comparison of continuous variable groups. The cutoff values of TBAR and FAR were calculated by the best survival separation model through the "Survival" and "Survminer" packages in R software (version 4.0.3). The corresponding *P* value and hazard ratio (HR) were calculated one by one with each TBAR and FAR value as the cutoff value by setting a cycle. When the *P* value was the smallest, the cutoff TBAR and FAR values were the best survival separation cutoff values. The correlations between preoperative carbohydrate antigen 199 (CA199), carcinoembryonic antigen (CEA), alanine aminotransferase (ALT), aspartate aminotransferase (AST), TBAR, and FAR were conducted by Spearman analysis. Univariable and multivariable Cox regression analyses were performed to validate the independent prognostic factors. Variables with *P* < 0.1 in the univariable survival analysis were included in the multivariable survival analysis. The results in the present study are described as HRs, 95% confidence intervals (CIs), and *P* values. A *P* value less than 0.05 was considered statistically significant. All statistical analyses were performed using R software (version 4.0.3).

## RESULTS

### Baseline characteristics

In total, 188 AC patients were enrolled in the study, with an overall male:female ratio of 1.47. Overall, nearly a quarter of patients had lymph node metastasis. Since all patients underwent open pancreaticoduodenectomy and the surgical trauma was relatively large, nearly half of the patients received intraoperative blood transfusion. In addition, a total of 54 patients (28.72%) received postoperative adjuvant therapy. The detailed baseline clinicopathologic characteristics of AC patients in the current study are illustrated in [Table 1](#).

### Cutoff values of TBAR and FAR

The cutoff values of TBAR and FAR were calculated through the best survival separation model. In the current study, the cutoff value of TBAR was 1.7943, while the cutoff value of FAR was 0.1329 ([Figure 1](#)). Furthermore, we conducted correlations between preoperative CA199, CEA, ALT, AST, TBAR, and FAR. The results demonstrated that FAR was significantly correlated with preoperative AST, ALT, and CA199, while TBAR was significantly correlated with preoperative AST, ALT, CEA, and CA199 ([Figure 2](#), [Supplementary Tables 1 and 2](#)).

### Total score combining the TBAR and FAR

In the current study, we defined TBAR-low and FAR-low as score 0 and TBAR-high and FAR-high as score 1. Directly after, we calculated the total score and classified all the patients into the score-0 group, score-1 group, and score-2 group. By comparing the baseline clinicopathologic data, we found that there were no significant differences among the three groups in tumor stage, tumor differentiation degree, tumor size, CA199 level, CEA level, or postoperative adjuvant therapy ([Table 1](#)).

### Survival analysis

The 1-year, 3-year, and 5-year overall survival (OS) rates were 91.3%, 63.6%, and 41.7%, respectively. According to the univariable survival analysis, the TBAR-high group, FAR-high group, and score-high group had better prognoses ([Figure 3](#)). In the multivariable logistic regression analysis, score 1 [odds ratio (OR) = 0.517; 95%CI: 0.270-0.988; *P* = 0.046] and score 2 (OR = 0.236; 95%CI: 0.060-0.922; *P* = 0.038) were independent protective factors for tumor recurrence ([Table 2](#)). However, in the multivariable survival analysis, a high score was not an independent factor for recurrence-free survival (RFS) (*P* > 0.05) ([Supplementary Table 3](#)). Furthermore, we conducted multivariable OS analysis and found that only the score-2 group was an independent protective factor for OS (HR = 0.230; 95%CI: 0.054-0.972; *P* = 0.046) ([Table 3](#)).

## DISCUSSION

Most previous studies separately analyzed the prognostic value of preoperative TB, fibrinogen, and albumin for solid tumors, and the results from different cohorts are still controversial. After inclusion of these predictors, we found that TBAR combined with the FAR was an independent predictor for tumor recurrence and an independent protective factor for OS in AC patients. These peripheral blood biomarkers could be used as prognostic factors and are novel, reliable, economic, and easily accessible biomarkers for advanced AC.

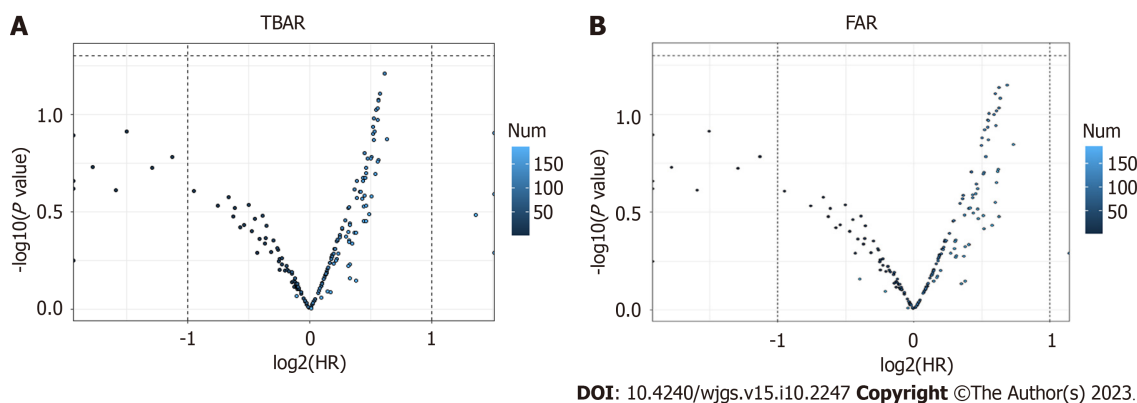
The hemostatic system can regulate angiogenesis in various ways. Fibrinogen is an extracellular matrix protein composed of three polypeptide chains with fibrinogen alpha, beta, and gamma. Recent studies have shown that the FAR

**Table 1 Comparing the baseline characteristics of different score groups in ampullary adenocarcinoma**

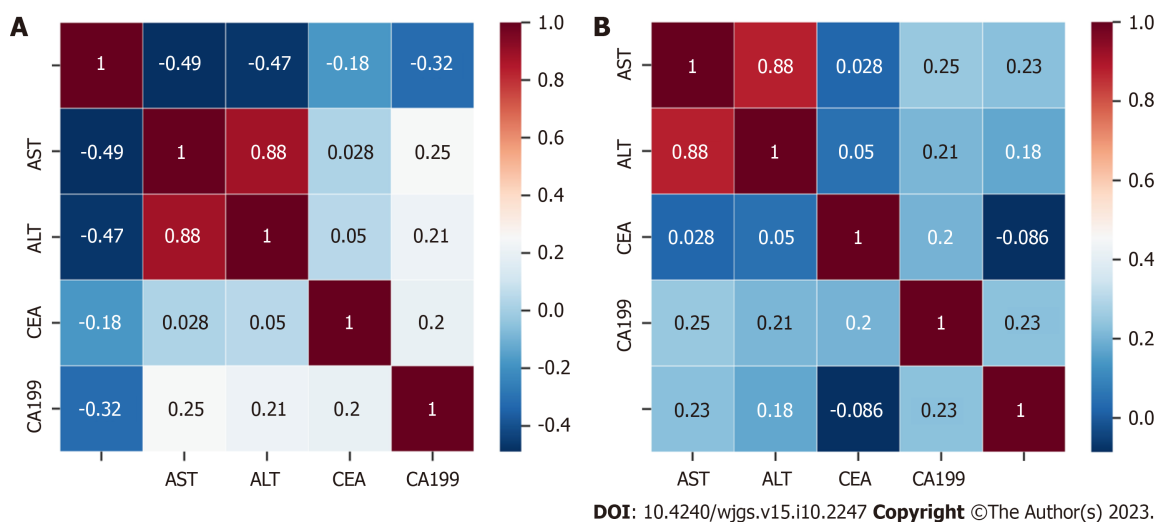
Variables	Total (n = 188)	Score-0 (n = 88)	Score-1 (n = 84)	Score-2 (n = 16)	P value
Gender, n (%)					0.166
Male	112 (59.574)	58 (65.909)	47 (55.952)	7 (43.750)	
Female	76 (40.426)	30 (34.091)	37 (44.048)	9 (56.250)	
Age, median (IQR)	58 (50, 64)	58 (51, 64)	59 (50, 66)	53 (45, 64)	0.449
Differentiation, n (%)					0.052
Poor	73 (38.830)	34 (38.636)	36 (42.857)	3 (18.750)	
Moderate	70 (37.234)	38 (43.182)	27 (32.143)	5 (31.250)	
Well	45 (23.936)	16 (18.182)	21 (25.000)	8 (50.000)	
Tumor size, n (%)					0.479
≤ 2 cm	94 (50.000)	43 (48.864)	45 (53.571)	6 (37.500)	
> 2 cm	94 (50.000)	45 (51.136)	39 (46.429)	10 (62.500)	
AST (U/L), median (IQR)	57 (35, 112)	72 (48, 126)	50 (23, 94)	30 (20, 72)	< 0.001
ALT (U/L), median (IQR)	87 (36, 150)	105 (66, 186)	54 (29, 117)	45 (18, 70)	< 0.001
CEA (ng/mL), median (IQR)	2.75 (1.88, 3.81)	3.06 (1.85, 4.48)	2.58 (1.92, 3.78)	2.24 (1.94, 2.97)	0.193
CA199 (U/mL), median (IQR)	55.80 (18.83, 184.30)	60.84 (27.41, 162.30)	55.80 (13.57, 191.40)	35.46 (20.32, 72.94)	0.444
Perioperative transfusion, n (%)					0.226
No	96 (51.064)	45 (51.136)	46 (54.762)	5 (31.250)	
Yes	92 (48.936)	43 (48.864)	38 (45.238)	11 (68.750)	
T stage, n (%)					0.088
I	36 (19.149)	10 (11.364)	21 (25.000)	5 (31.250)	
II	57 (30.319)	28 (31.818)	23 (27.381)	6 (37.500)	
III	95 (50.532)	50 (56.818)	40 (47.619)	5 (31.250)	
Examined lymph nodes, median (IQR)	11 (7, 18)	12 (8, 18)	11 (6, 19)	9 (4, 10)	0.044
Examined lymph node, n (%)					0.035
< 12	107 (56.915)	47 (53.409)	46 (54.762)	14 (87.500)	
≥ 12	81 (43.085)	41 (46.591)	38 (45.238)	2 (12.500)	
Lymph node metastasis, n (%)					0.402
No	140 (74.468)	63 (71.591)	63 (75.000)	14 (87.500)	
Yes	48 (25.532)	25 (28.409)	21 (25.000)	2 (12.500)	
TNM stage, n (%)					None
I	82 (43.617)	32 (36.364)	40 (47.619)	10 (62.500)	
II	76 (40.426)	37 (42.045)	33 (39.286)	6 (37.500)	
III	30 (15.957)	19 (21.591)	11 (13.095)	0 (0.000)	
Vessel invasion, n (%)					None
No	141 (75.000)	57 (64.773)	68 (80.952)	16 (100.000)	
Yes	47 (25.000)	31 (35.227)	16 (19.048)	0 (0.000)	
Postoperative complications, n (%)					0.353
No	110 (58.511)	49 (55.682)	49 (58.333)	12 (75.000)	
Yes	78 (41.489)	39 (44.318)	35 (41.667)	4 (25.000)	
Adjuvant treatment, n (%)					0.235

No	134 (71.277)	59 (67.045)	61 (72.619)	14 (87.500)	
Yes	54 (28.723)	29 (32.955)	23 (27.381)	2 (12.500)	
Fibrinogen (g/L), median (IQR)	3.68 (3.12, 4.22)	3.71 (3.20, 4.02)	3.74 (3.15, 4.42)	3.06 (2.67, 3.96)	0.153
Albumin (g/L), median (IQR)	37.10 (31.40, 41.20)	39.00 (35.40, 41.40)	35.70 (27.60, 41.70)	4.13 (3.82, 4.47)	< 0.001
Total bilirubin ( $\mu\text{mol/L}$ ), median (IQR)	38.70 (12.82, 173.60)	161.90 (63.10, 228.80)	15.31 (8.96, 24.58)	1.32 (0.75, 1.99)	< 0.001
FAR, median (IQR)	0.106 (0.086, 0.150)	0.095 (0.086, 0.109)	0.134 (0.084, 0.195)	0.687 (0.174, 0.764)	< 0.001
TBAR, median (IQR)	0.538 (0.205, 2.325)	0.266 (0.162, 0.580)	1.807 (0.386, 3.303)	3.694 (2.742, 5.027)	< 0.001

IQR: Interquartile range; AST: Aspartate aminotransferase; ALT: Alanine aminotransferase; CEA: Carcinoembryonic antigen; CA199: Carbohydrate antigen 199; TNM: Tumor-node-metastasis; FAR: Fibrinogen-albumin ratio; TBAR: Total bilirubin-albumin ratio.



**Figure 1** Volcano plot showing the cutoff values of total bilirubin-albumin ratio and fibrinogen-albumin ratio through the best survival separation model. A: Total bilirubin-albumin ratio; B: Fibrinogen-albumin ratio.



**Figure 2** Spearman correlations between preoperative carbohydrate antigen 199, carcinoembryonic antigen, alanine aminotransferase, aspartate aminotransferase, total bilirubin-albumin ratio and fibrinogen-albumin ratio. A: Total bilirubin-albumin ratio; B: Fibrinogen-albumin ratio. AST: Aspartate aminotransferase; ALT: Alanine aminotransferase; CEA: Carcinoembryonic antigen; CA199: Carbohydrate antigen 199.

is associated with prognosis in several solid malignancies, including pancreatic neuroendocrine neoplasms[11] and gastrointestinal stromal tumors[12]. FAR is considered a feasible and predictive biomarker for prognosis in patients. In addition, Zhang and Xiao[13] revealed that the FAR was significantly associated with deeper tumor invasion and increased regional lymph node involvement. However, Zhao *et al*[14] showed that fibrinogen-derived fibrinostatin has antiangiogenic activity by inhibiting endothelial cell proliferation, adhesion, migration and tubule formation. By inducing apoptosis and inhibiting epithelial-mesenchymal transition, alpha may suppress lung adenocarcinoma cell growth and

**Table 2 Univariate and multivariate logistic analysis of independent factors predicting the tumor recurrence**

Variables	Univariable analysis			Multivariable analysis		
	OR	95%CI	P value	OR	95%CI	P value
Gender						
Male		Reference				
Female	1.176	0.656-2.110	0.586			
Age						
< 60		Reference				
≥ 60	0.747	0.414-1.347	0.332			
Differentiation						
Poor		Reference				
Moderate	1.150	0.596-2.216	0.677			
Well	0.599	0.279-1.286	0.189			
Tumor size						
≤ 2 cm		Reference				
> 2 cm	0.879	0.496-1.561	0.661			
Perioperative transfusion						
No		Reference				
Yes	0.619	0.347-1.103	0.104			
Operation time						
≤ 3 h						
> 3 h and ≤ 6 h						
> 6 h						
T stage						
I		Reference			Reference	
II	1.197	0.506-2.833	0.683	0.815	0.321-2.064	0.665
III	2.051	0.930-4.521	0.075	0.743	0.132-4.184	0.736
Examined lymph nodes						
< 12		Reference				
≥ 12	1.359	0.761-2.427	0.300			
Lymph node metastasis						
No		Reference			Reference	
Yes	2.735	1.384-5.406	0.004	1.224	0.425-3.524	0.707
TNM stage						
I		Reference			Reference	
II	1.560	0.823-2.956	0.173	1.574	0.289-8.574	0.600
III	6.005	2.300-15.676	< 0.001	4.149	0.491-35.043	0.191
Vessel invasion						
No		Reference			Reference	
Yes	2.601	1.313-5.151	0.006	1.353	0.616-2.970	0.451
Postoperative complications						
No		Reference				
Yes	0.696	0.387-1.250	0.225			



Adjuvant treatment						
No		Reference				
Yes	1.689	0.893-3.192	0.107			
CEA	1.071	0.978-1.172	0.139			
CA199	1.000	1.000-1.000	0.824			
TBAR	0.988	0.895-1.090	0.807			
FAR	0.504	0.182-1.393	0.186			
Score						
0		Reference			Reference	
1	0.469	0.255-0.863	0.015	0.517	0.270-0.988	0.046
2	0.167	0.045-0.630	0.008	0.236	0.060-0.922	0.038

CEA: Carcinoembryonic antigen; CA199: Carbohydrate antigen 199; TNM: Tumor-node-metastasis; FAR: Fibrinogen-albumin ratio; TBAR: Total bilirubin-albumin ratio; OR: Odds ratio; CI: Confidence interval.

metastasis[15]. Nevertheless, the specific mechanism of the relationship between the FAR and prognosis still needs to be investigated further.

Bilirubin is one of the routine biochemical testing items, which originates primarily from circulating hemoglobin and is the most important product of hemoglobin decomposition. It has antioxidant properties and can protect cells against oxidative stress as an endogenous antioxidant[16]. Sun *et al*[17] found that decreases in serum bilirubin levels are associated with poorer prognoses in some types of cancer through antioxidant activity. Another study also revealed that high serum bilirubin was related to low cancer mortality[18]. However, Feng *et al*[19] demonstrated that baseline bilirubin and serum proteins were not associated with the prognosis of advanced pancreatic cancer. Instead, a Japanese study indicated that a low albumin-bilirubin (ALBI) grade is related to better OS and RFS in esophageal cancer patients[20]. AC will directly affect the biliary tract, and the presence of jaundice can predict malignant ampullary strictures[21]; thus, their disease may be diagnosed at an earlier stage.

Albumin is a secretory protein produced only by functional hepatocytes, and it reflects the chronic nutritional state, which is commonly used for nutritional status assessment. The nutritional state of cancer patients was associated with unfavorable outcomes in malignant tumor patients. Our score is a composite indicator containing representative results of biochemical analysis, which can reflect the nutritional and inflammatory status, liver function and tumor effect. FAR in conjunction with TBAR has the potential to assist clinicians in the stratification of patients. Nevertheless, further investigation is still needed for the application of the novel score in clinical practice.

The traditional Child-Pugh grade used to assess liver function faces several inherent limitations. Therefore, Johnson *et al*[22] developed a simple model based on albumin and bilirubin levels alone, the ALBI grade, which can stratify patients into three risk categories and objectively prognosticate survival. A meta-analysis demonstrated that high pretreatment ALBI is closely associated with poor prognosis in hepatocellular cancer[23]. The ALBI grade also showed improved discriminatory ability in pancreatic cancer[24] and colorectal cancer[25]. Our new score adds the blood coagulation index and broadens the use of AC. In addition, the score is easily calculated compared with the ALBI grade and increases versatility and usefulness.

High scores were independent factors for RFS in the univariable survival analysis but not in the multivariable analysis. Although there were some differences in RFS, these were not statistically significant. Furthermore, we conducted multivariable OS analysis and found that only the score-2 group was an independent protective factor for OS. Such conflicting results might be related to several factors. First, patients with higher scores might be more likely to detect recurrence earlier and receive more aggressive treatment as a result. Consequently, this might not significantly affect RFS but could emerge as an independent prognostic factor for OS. Second, the number of patients in the score-high groups was relatively small, and it might be challenging to detect statistically significant differences in RFS. Third, the inclusion of other prognostic factors in the model might have resulted in multicollinearity or confounding effects, which could attenuate the initial observed relationship between the score-high groups and RFS. These results emphasize the need for further research, potentially involving larger patient cohorts to comprehensively understand the underlying mechanisms and relationships between the scoring system and different survival outcomes.

During tumor growth, tumor markers are produced and released into the blood circulation, which can be used for the diagnosis and monitoring of tumors. However, sensitive tumor markers are still lacking for predicting survival and treatment outcomes in AC[26]. In recent years, liquid biopsies have been increasingly emphasized. Circulating tumor DNA (ctDNA) derived from tumors is being used in analyzing prognosis and tumor burden in some solid tumors. Patel *et al*[27] found that higher levels of total ctDNA were an independent prognostic factor for worse survival for patients with advanced pancreatic ductal adenocarcinoma. However, this new technique can be limited by the small amounts of circulating biomarkers, and not everyone has detectable ctDNA levels[28]. To date, liquid biopsy is a complement to tissue biopsy, and more research studies are needed for the improvement of clinical applications. They are not considered to be perfect predictors for the above reasons. Therefore, our new scoring system contained three common indicators and

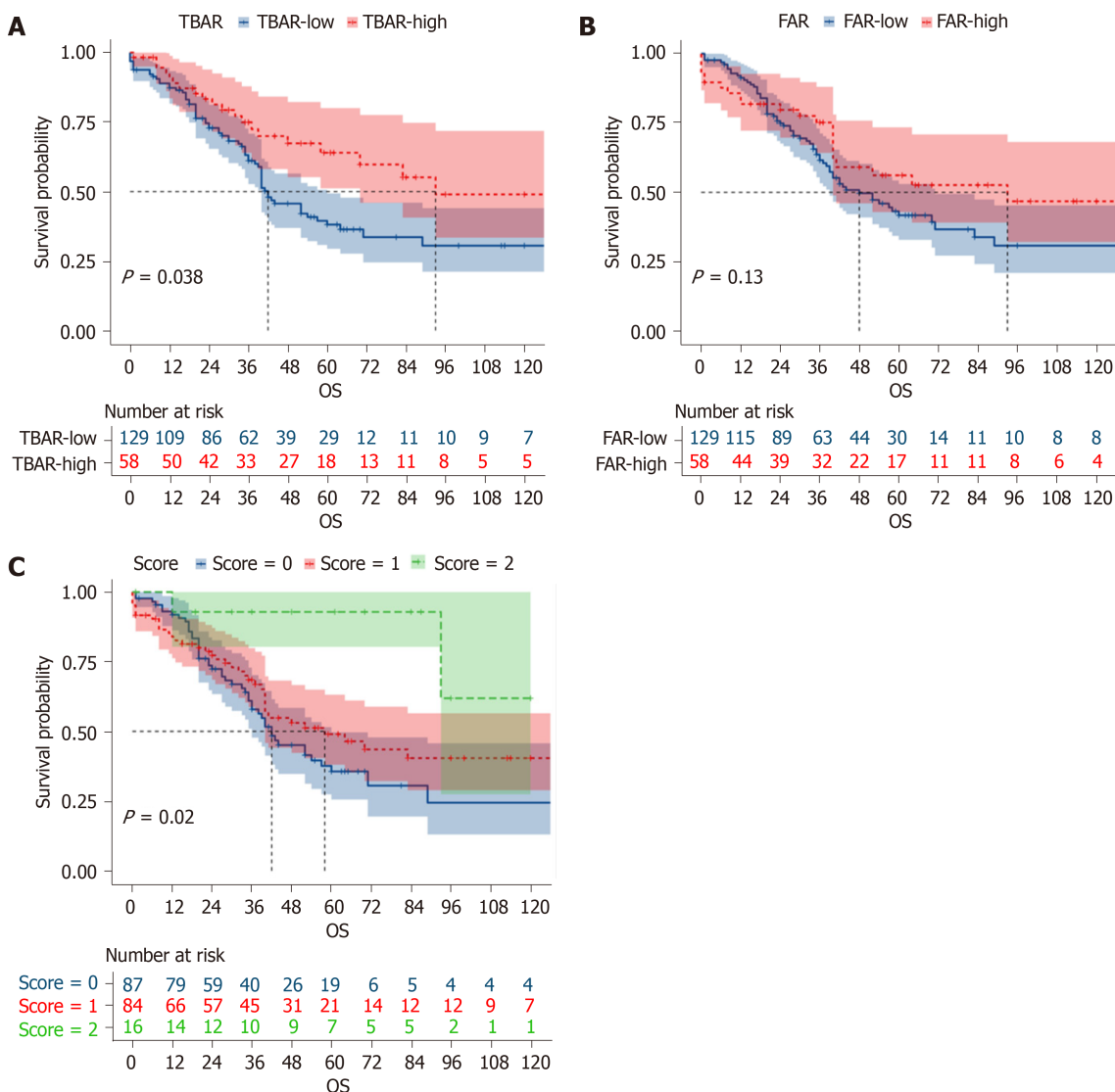
**Table 3 Univariable and multivariable Cox regression analysis of overall survival time in ampullary adenocarcinoma**

Variables	Univariate analysis			Multivariate analysis		
	HR	95%CI	P value	HR	95%CI	P value
Gender						
Male		Reference				
Female	1.080	0.711-1.639	0.719			
Age						
< 60		Reference				
≥ 60	1.198	0.788-1.822	0.398			
Differentiation						
Poor		Reference			Reference	
Moderate	0.873	0.548-1.391	0.568	0.981	0.600-1.603	0.938
Well	0.596	0.344-1.034	0.066	0.979	0.501-1.911	0.949
Tumor size						
≤ 2 cm		Reference				
> 2 cm	1.139	0.756-1.716	0.534			
Perioperative transfusion						
No		Reference				
Yes	0.861	0.570-1.298	0.474			
T stage						
I		Reference			Reference	
II	0.927	0.485-1.769	0.817	0.792	0.375-1.672	0.541
III	2.128	1.211-3.741	0.009	1.731	0.474-6.322	0.407
Examined lymph nodes						
< 12		Reference				
≥ 12	1.344	0.881-2.051	0.171			
Lymph node metastasis						
No		Reference			Reference	
Yes	2.203	1.407-3.447	0.001	1.704	0.851-3.412	0.132
TNM stage						
I		Reference			Reference	
II	1.965	1.230-3.137	0.005	0.886	0.272-2.888	0.841
III	3.030	1.711-5.368	< 0.001	0.918	0.208-4.057	0.910
Vessel invasion						
No		Reference				
Yes	1.410	0.885-2.248	0.148			
Postoperative complications						
No		Reference				
Yes	1.343	0.886-2.035	0.164			
Adjuvant treatment						
No		Reference				
Yes	0.946	0.590-1.514	0.816			
CEA	1.001	0.999-1.004	0.359			



CA199	1.000	1.000-1.000	0.585			
TBAR	0.966	0.880-1.061	0.470			
FAR	0.748	0.359-1.558	0.438			
Score						
0		Reference			Reference	
1	0.787	0.518-1.196	0.262	0.890	0.577-1.373	0.599
2	0.176	0.043-0.726	0.016	0.230	0.054-0.972	0.046

CEA: Carcinoembryonic antigen; CA199: Carbohydrate antigen 199; TNM: Tumor-node-metastasis; FAR: Fibrinogen-albumin ratio; TBAR: Total bilirubin-albumin ratio; HR: Hazard ratio; CI: Confidence interval.



DOI: 10.4240/wjgs.v15.i10.2247 Copyright ©The Author(s) 2023.

**Figure 3** Comparing the Kaplan-Meier survival curves of different groups divided by total bilirubin-albumin ratio, fibrinogen-albumin ratio and total score. A: Total bilirubin-albumin ratio; B: Fibrinogen-albumin ratio; C: Total score. TBAR: Total bilirubin-albumin ratio; FAR: Fibrinogen-albumin ratio; OS: Overall survival.

showed great predictive power in AC patients who underwent curative pancreaticoduodenectomy. The novel score is expected to become a new biomarker for identifying poor prognosis in patients with AC.

There were limitations to this study. First, this was a single-center retrospective study with a relatively small sample, and multicentric prospective studies with large samples are needed in the future. Second, we did not perform a cohort verification of the results, and external validation is needed. Third, we did not investigate whether the postoperative

peripheral blood biomarkers could be used as prognostic factors and analyzed the dynamic changes in the three indicators. Future research can evaluate the impact of these changes in great depth.

---

## CONCLUSION

The novel prognostic score based on the preoperative TBAR and FAR was an independent predictor for tumor recurrence and an independent protective factor for OS in AC patients who underwent curative pancreaticoduodenectomy. However, more studies with larger samples are needed to validate this conclusion.

## ARTICLE HIGHLIGHTS

### **Research background**

Whether the relationship of preoperative total bilirubin, fibrinogen, and albumin could be used as prognostic factors is still debated.

### **Research motivation**

The present study attempted to explore the prognostic value of total bilirubin-albumin ratio (TBAR) and fibrinogen-albumin ratio (FAR) in ampullary adenocarcinoma (AC) patients who underwent curative pancreaticoduodenectomy.

### **Research objectives**

This study aimed to investigate whether there was an association between the novel prognostic score and poor oncologic outcomes in ampullary carcinoma.

### **Research methods**

The clinicopathological data of ampullary carcinoma patients who underwent surgery from January 1998 to January 2020 were analyzed. Then, a novel prognostic score combining TBAR and FAR was calculated and validated through logistic regression analysis and Cox regression analysis.

### **Research results**

Multivariable logistic regression analysis revealed that a high score was an independent protective factor for recurrence. In addition, multivariable survival analysis also demonstrated that a high score was an independent protective factor in AC patients.

### **Research conclusions**

We found that the novel prognostic score based on the preoperative TBAR and FAR has good predictive power in AC patients who underwent curative pancreaticoduodenectomy.

### **Research perspectives**

There are several limitations in this retrospective study, and more studies with larger samples are needed to validate this conclusion.

---

## FOOTNOTES

**Author contributions:** Zhang XJ and Fei H contributed equally to this work; Guo CG and Zhao DB designed the research study, they are the corresponding authors of this paper; Fei H and Zhang XJ analyzed the data; all authors wrote the manuscript; and all authors have read and approved the final manuscript.

**Institutional review board statement:** Ethical review and approval were not required for the study on human participants in accordance with the National Cancer Center/National Clinical Research Center for Cancer/Cancer Hospital, Chinese Academy of Medical Sciences and Peking Union Medical College.

**Informed consent statement:** Ethical review and approval were not required for the study on human participants in accordance with the local legislation and institutional requirements.

**Conflict-of-interest statement:** All the authors report no relevant conflicts of interest for this article.

**Data sharing statement:** No additional data are available.

**Open-Access:** This article is an open-access article that was selected by an in-house editor and fully peer-reviewed by external reviewers. It is distributed in accordance with the Creative Commons Attribution NonCommercial (CC BY-NC 4.0) license, which permits others to

distribute, remix, adapt, build upon this work non-commercially, and license their derivative works on different terms, provided the original work is properly cited and the use is non-commercial. See: <https://creativecommons.org/licenses/by-nc/4.0/>

**Country/Territory of origin:** China

**ORCID number:** Xiao-Jie Zhang 0000-0001-9850-9806; He Fei 0000-0003-4831-4028; Chong-Yuan Sun 0000 0003 1354 2063; Ze-Feng Li 0000-0002-5345-3527; Zheng Li 0000-0003-4415-6552; Chun-Guang Guo 0000-0002-2674-6586; Dong-Bing Zhao 0000-0002-6770-2694.

**S-Editor:** Wang JJ

**L-Editor:** A

**P-Editor:** Wang JJ

## REFERENCES

- Zimmermann C, Wolk S, Aust DE, Meier F, Saeger HD, Ehehalt F, Weitz J, Welsch T, Distler M. The pathohistological subtype strongly predicts survival in patients with ampullary carcinoma. *Sci Rep* 2019; **9**: 12676 [PMID: 31481741 DOI: 10.1038/s41598-019-49179-w]
- de Rooij T, van Hilst J, Bosscha K, Dijkstra MG, Gerhards MF, Groot Koerkamp B, Hagendoorn J, de Hingh IH, Karsten TM, Lips DJ, Luyer MD, Molenaar IQ, van Santvoort HC, Tran TCK, Busch OR, Festen S, Besselink MG; Dutch Pancreatic Cancer Group. Minimally invasive versus open pancreatoduodenectomy (LEOPARD-2): study protocol for a randomized controlled trial. *Trials* 2018; **19**: 1 [PMID: 29298706 DOI: 10.1186/s13063-017-2423-4]
- Wu CL, Chao YJ, Yang TM, Chen YL, Chang KC, Hsu HP, Shan YS, Lai MD. Dual role of CD44 isoforms in ampullary adenocarcinoma: CD44s predicts poor prognosis in early cancer and CD44v is an indicator for recurrence in advanced cancer. *BMC Cancer* 2015; **15**: 903 [PMID: 26572077 DOI: 10.1186/s12885-015-1924-3]
- Lin JX, Tang YH, Wang JB, Lu J, Chen QY, Cao LL, Lin M, Tu RH, Huang CM, Li P, Zheng CH, Xie JW. Blood parameters score predicts long-term outcomes in stage II-III gastric cancer patients. *World J Gastroenterol* 2019; **25**: 6258-6272 [PMID: 31749596 DOI: 10.3748/wjg.v25.i41.6258]
- Yuan C, Huang M, Wang H, Jiang W, Su C, Zhou S. Pretreatment Fibrinogen-Albumin Ratio (FAR) Associated with Treatment Response and Survival in Advanced Non-Small Cell Lung Cancer Patients Treated with First-Line Anti-PD-1 Therapy Plus Platinum-Based Combination Chemotherapy. *Cancer Manag Res* 2022; **14**: 377-386 [PMID: 35115834 DOI: 10.2147/CMAR.S347547]
- Mai RY, Bai T, Luo XL, Wu GB. Preoperative fibrinogen-to-albumin ratio predicts the prognosis of patients with hepatocellular carcinoma subjected to hepatectomy. *BMC Gastroenterol* 2022; **22**: 261 [PMID: 35606690 DOI: 10.1186/s12876-022-02328-4]
- Ying HQ, Sun F, Liao YC, Cai D, Yang Y, Cheng XX. The value of circulating fibrinogen-to-pre-albumin ratio in predicting survival and benefit from chemotherapy in colorectal cancer. *Ther Adv Med Oncol* 2021; **13**: 17588359211022886 [PMID: 34262615 DOI: 10.1177/17588359211022886]
- Lin GT, Ma YB, Chen QY, Zhong Q, Zheng CH, Li P, Xie JW, Wang JB, Lin JX, Huang CM. Fibrinogen-Albumin Ratio as a New Promising Preoperative Biochemical Marker for Predicting Oncological Outcomes in Gastric Cancer: A Multi-institutional Study. *Ann Surg Oncol* 2021; **28**: 7063-7073 [PMID: 33931823 DOI: 10.1245/s10434-021-10027-9]
- Chen J, Hao L, Zhang S, Zhang Y, Dong B, Zhang Q, Han C. Preoperative Fibrinogen-Albumin Ratio, Potential Prognostic Factors for Bladder Cancer Patients Undergoing Radical Cystectomy: A Two-Center Study. *Cancer Manag Res* 2021; **13**: 3181-3192 [PMID: 33883935 DOI: 10.2147/CMAR.S300574]
- Lu S, Liu Z, Zhou X, Wang B, Li F, Ma Y, Wang W, Ma J, Wang Y, Wang H, Fu W. Preoperative Fibrinogen-Albumin Ratio Index (FARI) is a Reliable Prognosis and Chemoradiotherapy Sensitivity Predictor in Locally Advanced Rectal Cancer Patients Undergoing Radical Surgery Following Neoadjuvant Chemoradiotherapy. *Cancer Manag Res* 2020; **12**: 8555-8568 [PMID: 32982448 DOI: 10.2147/CMAR.S273065]
- Deng S, Fan Z, Xia H, Gong Y, Qian Y, Huang Q, Cheng H, Jin K, Xiao Z, Luo G, Yu X, Liu C. Fibrinogen/Albumin Ratio as a Promising Marker for Predicting Survival in Pancreatic Neuroendocrine Neoplasms. *Cancer Manag Res* 2021; **13**: 107-115 [PMID: 33447083 DOI: 10.2147/CMAR.S275173]
- Li R, Song S, He X, Shi X, Sun Z, Li Z, Song J. Relationship Between Fibrinogen to Albumin Ratio and Prognosis of Gastrointestinal Stromal Tumors: A Retrospective Cohort Study. *Cancer Manag Res* 2020; **12**: 8643-8651 [PMID: 32982455 DOI: 10.2147/CMAR.S271171]
- Zhang Y, Xiao G. Prognostic significance of the ratio of fibrinogen and albumin in human malignancies: a meta-analysis. *Cancer Manag Res* 2019; **11**: 3381-3393 [PMID: 31114374 DOI: 10.2147/CMAR.S198419]
- Zhao C, Su Y, Zhang J, Feng Q, Qu L, Wang L, Liu C, Jiang B, Meng L, Shou C. Fibrinogen-derived fibrinostatin inhibits tumor growth through anti-angiogenesis. *Cancer Sci* 2015; **106**: 1596-1606 [PMID: 26300396 DOI: 10.1111/cas.12797]
- Tiscia GL, Margaglione M. Human Fibrinogen: Molecular and Genetic Aspects of Congenital Disorders. *Int J Mol Sci* 2018; **19** [PMID: 29844251 DOI: 10.3390/ijms19061597]
- Jeon C, Lee JY, Lee SJ, Jung KJ, Kimm H, Jee SH. Bilirubin and risk of ischemic heart disease in Korea: a two-sample Mendelian randomization study. *Epidemiol Health* 2019; **41**: e2019034 [PMID: 31319653 DOI: 10.4178/epih.e2019034]
- Sun H, He B, Nie Z, Pan Y, Lin K, Peng H, Xu T, Chen X, Hu X, Wu Z, Wu D, Wang S. A nomogram based on serum bilirubin and albumin levels predicts survival in gastric cancer patients. *Oncotarget* 2017; **8**: 41305-41318 [PMID: 28476041 DOI: 10.18632/oncotarget.17181]
- Temme EH, Zhang J, Schouten EG, Kesteloot H. Serum bilirubin and 10-year mortality risk in a Belgian population. *Cancer Causes Control* 2001; **12**: 887-894 [PMID: 11808707 DOI: 10.1023/a:1013794407325]
- Feng L, Gu S, Wang P, Chen H, Chen Z, Meng Z, Liu L. Pretreatment values of bilirubin and albumin are not prognostic predictors in patients with advanced pancreatic cancer. *Cancer Med* 2018; **7**: 5943-5951 [PMID: 30474926 DOI: 10.1002/cam4.1848]
- Aoyama T, Ju M, Machida D, Komori K, Tamagawa H, Tamagawa A, Maezawa Y, Kano K, Hara K, Segami K, Hashimoto I, Nagasawa S, Nakazono M, Oshima T, Yukawa N, Rino Y. Clinical Impact of Preoperative Albumin-Bilirubin Status in Esophageal Cancer Patients Who Receive Curative Treatment. *In Vivo* 2022; **36**: 1424-1431 [PMID: 35478112 DOI: 10.21873/in vivo.12847]
- Lee JE, Choi SY, Lee MH, Lim S, Min JH, Hwang JA, Lee S, Kim JH. Differentiating between benign and malignant ampullary strictures: a

- prediction model using a nomogram based on CT imaging and clinical findings. *Eur Radiol* 2022; **32**: 7566-7577 [PMID: 35585200 DOI: 10.1007/s00330-022-08856-7]
- 22 **Johnson PJ**, Berhane S, Kagebayashi C, Satomura S, Teng M, Reeves HL, O'Beirne J, Fox R, Skowronska A, Palmer D, Yeo W, Mo F, Lai P, Iñarrairaegui M, Chan SL, Sangro B, Miksad R, Tada T, Kumada T, Toyoda H. Assessment of liver function in patients with hepatocellular carcinoma: a new evidence-based approach-the ALBI grade. *J Clin Oncol* 2015; **33**: 550-558 [PMID: 25512453 DOI: 10.1200/JCO.2014.57.9151]
- 23 **Xu YX**, Wang YB, Tan YL, Xi C, Xu XZ. Prognostic value of pretreatment albumin to bilirubin ratio in patients with hepatocellular cancer: A meta-analysis. *Medicine (Baltimore)* 2019; **98**: e14027 [PMID: 30633195 DOI: 10.1097/MD.00000000000014027]
- 24 **Yagyu T**, Saito H, Sakamoto T, Uchinaka EI, Morimoto M, Amisaki M, Watanabe J, Tokuyasu N, Honjo S, Ashida K, Fujiwara Y. Preoperative Albumin-Bilirubin Grade as a Useful Prognostic Indicator in Patients With Pancreatic Cancer. *Anticancer Res* 2019; **39**: 1441-1446 [PMID: 30842180 DOI: 10.21873/anticancer.13260]
- 25 **Watanabe D**, Fujii H, Yamada Y, Matsuhashi N, Makiyama A, Iihara H, Takahashi T, Kiyama S, Kobayashi R, Yoshida K, Suzuki A. Association of albumin-bilirubin score in patients with colorectal cancer receiving later-line chemotherapy with regorafenib. *Int J Clin Oncol* 2021; **26**: 1257-1263 [PMID: 33839963 DOI: 10.1007/s10147-021-01910-2]
- 26 **Kawaida H**, Kono H, Amemiya H, Hosomura N, Watanabe M, Saito R, Maruyama S, Shimizu H, Furuya S, Akaiki H, Kawaguchi Y, Sudo M, Matusda M, Itakura J, Shindo H, Takahashi EI, Takano S, Fukasawa M, Satou T, Nakazawa T, Enomoto N, Fujii H, Ichikawa D. Stratification of Prognosis in Patients With Ampullary Carcinoma After Surgery by Preoperative Platelet-to-lymphocyte Ratio and Conventional Tumor Markers. *Anticancer Res* 2019; **39**: 6923-6929 [PMID: 31810963 DOI: 10.21873/anticancer.13913]
- 27 **Patel H**, Okamura R, Fanta P, Patel C, Lanman RB, Raymond VM, Kato S, Kurzrock R. Clinical correlates of blood-derived circulating tumor DNA in pancreatic cancer. *J Hematol Oncol* 2019; **12**: 130 [PMID: 31801585 DOI: 10.1186/s13045-019-0824-4]
- 28 **Nikanjam M**, Kato S, Kurzrock R. Liquid biopsy: current technology and clinical applications. *J Hematol Oncol* 2022; **15**: 131 [PMID: 36096847 DOI: 10.1186/s13045-022-01351-y]



Published by **Baishideng Publishing Group Inc**  
7041 Koll Center Parkway, Suite 160, Pleasanton, CA 94566, USA

**Telephone:** +1-925-3991568

**E-mail:** [bpgoffice@wjgnet.com](mailto:bpgoffice@wjgnet.com)

**Help Desk:** <https://www.f6publishing.com/helpdesk>

<https://www.wjgnet.com>

