



Observational Study

Prevalence and risk factors of lymphatic dysfunction in cirrhosis patients with refractory ascites: An often unconsidered mechanism

Rahul Arya, Ramesh Kumar, Tarun Kumar, Sudhir Kumar, Utpal Anand, Rajeev Nayan Priyadarshi, Tanmoy Maji

Specialty type: Gastroenterology and hepatology

Provenance and peer review: Invited article; Externally peer reviewed.

Peer-review model: Single blind

Peer-review report's scientific quality classification

Grade A (Excellent): 0
Grade B (Very good): B
Grade C (Good): C
Grade D (Fair): 0
Grade E (Poor): 0

P-Reviewer: Giacomelli L, Italy;
Ullah K, Pakistan

Received: August 17, 2023

Peer-review started: August 17, 2023

First decision: September 5, 2023

Revised: September 14, 2023

Accepted: October 8, 2023

Article in press: October 8, 2023

Published online: October 27, 2023



Rahul Arya, Ramesh Kumar, Sudhir Kumar, Tanmoy Maji, Department of Gastroenterology, All India Institute of Medical Sciences, Patna 801507, Bihar, India

Tarun Kumar, Department of Pathology, All India Institute of Medical Sciences, Patna 801507, Bihar, India

Utpal Anand, Department of Surgical Gastroenterology, All India Institute of Medical Sciences, Patna 801507, Bihar, India

Rajeev Nayan Priyadarshi, Department of Radiodiagnosis, All India Institute of Medical Sciences, Patna 801507, Bihar, India

Corresponding author: Ramesh Kumar, MD, Additional Professor, Department of Gastroenterology, All India Institute of Medical Sciences, Phulwari Sharif, Patna 801507, Bihar, India. docrameshkr@gmail.com

Abstract

BACKGROUND

The lymphatic system is crucial in maintaining the body fluid homeostasis. A dysfunctional lymphatic system may contribute to the refractoriness of ascites and edema in cirrhosis patients. Therefore, assessment of lymphatic dysfunction in cirrhosis patients with refractory ascites (RA) can be crucial as it would call for using different strategies for fluid mobilization.

AIM

To assessing the magnitude, spectrum, and clinical associations of lymphatic dysfunction in liver cirrhosis patients with RA.

METHODS

This observational study included 155 consecutive cirrhosis patients with RA. The presence of clinical signs of lymphedema, such as peau d'orange appearance and positive Stemmer sign, intestinal lymphangiectasia (IL) on duodenal biopsy seen as dilated vessels in the lamina propria with strong D2-40 immunohistochemistry, and chylous ascites were used to diagnose the overt lymphatic dysfunctions.

RESULTS

A total of 69 (44.5%) patients out of 155 had evidence of lymphatic dysfunction.

Peripheral lymphedema, found in 52 (33.5%) patients, was the most common manifestation, followed by IL in 42 (27.0%) patients, and chylous ascites in 2 (1.9%) patients. Compared to patients without lymphedema, those with lymphedema had higher mean age, median model for end-stage liver disease scores, mean body mass index, mean ascitic fluid triglyceride levels, and proportion of patients with hypoproteinemia (serum total protein < 5 g/dL) and lymphocytopenia (< 15% of total leukocyte count). Patients with IL also had a higher prevalence of lymphocytopenia and hypoproteinemia (28.6% *vs.* 9.1%, $P = 0.004$). Seven (13%) patients with lymphedema had lower limb cellulitis compared to none in those without it. On multivariate regression analysis, factors independently associated with lymphatic dysfunction included obesity [odds ratio (OR): 4.2, 95% confidence intervals (95%CI): 1.1–15.2, $P = 0.027$], lymphocytopenia [OR: 6.2, 95%CI: 2.9–13.2, $P < 0.001$], and hypoproteinemia [OR: 3.7, 95%CI: 1.5–8.82, $P = 0.003$].

CONCLUSION

Lymphatic dysfunction is common in cirrhosis patients with RA. Significant indicators of its presence include hypoproteinemia and lymphocytopenia, which are likely due to the loss of lymphatic fluid from the circulation. Future efforts to mobilize fluid in these patients should focus on methods to improve lymphatic drainage.

Key Words: Cirrhosis; Lymphedema; Lymphangiectasia; Refractory ascites; Chylous ascites; Lymphocytopenia

©The Author(s) 2023. Published by Baishideng Publishing Group Inc. All rights reserved.

Core Tip: Lymphatic dysfunction is often underappreciated in advanced cirrhosis patients. Our study evaluated the magnitude, spectrum, and associations of lymphatic dysfunction in cirrhosis patients with refractory ascites (RA). Nearly half (44.5%) of the studied population ($n = 155$) revealed evidence of overt lymphatic dysfunction in the forms of peripheral lymphedema (33.5%), intestinal lymphangiectasia (27.0%), and chylous ascites (1.9%). Obesity, hypoproteinemia, and lymphocytopenia were independently associated with lymphatic dysfunction in said patients. From a therapeutic standpoint, it can be extremely important to evaluate lymphatic dysfunction in cirrhosis patients with RA since it would call for using different strategies for fluid mobilization.

Citation: Arya R, Kumar R, Kumar T, Kumar S, Anand U, Priyadarshi RN, Maji T. Prevalence and risk factors of lymphatic dysfunction in cirrhosis patients with refractory ascites: An often unconsidered mechanism. *World J Hepatol* 2023; 15(10): 1140-1152

URL: <https://www.wjgnet.com/1948-5182/full/v15/i10/1140.htm>

DOI: <https://dx.doi.org/10.4254/wjh.v15.i10.1140>

INTRODUCTION

The lymphatic system is crucial in maintaining the body fluid homeostasis[1]. By recirculating surplus tissue fluid back into the bloodstream, the lymphatic system prevents tissues from becoming edematous. In patients with cirrhosis and portal hypertension (PHT), the production of lymph from the liver and intestines is significantly increased[2,3]. Increased production of lymph promotes lymphangiogenesis, which in turn tends to improve the functional capacity of the lymphatics. However, as cirrhosis progresses, these compensatory mechanisms become overwhelmed, leading to the development of ascites and edema[2-4]. Subsequently, functional impairment of the lymphatic system also sets in, resulting in further worsening of the fluid accumulation[4,5]. The consequent lymphatic flow stagnation and leakage lay the ground for lymphedema development, which is the deposition of protein-rich lymph fluid within the tissues[6]. The gut lymphatics are important for maintaining the abdominal fluid balance. Studies have shown that patients with cirrhosis have much higher abdominal lymph production (up to 30-fold) and lymph flow in the thoracic duct (8-9 L/day) [7,8]. Moreover, a persistently high lymphatic pressure associated with PHT has the potential to cause intestinal lymphangiectasia (IL) and chylous ascites (CA) in cirrhosis patients[9-11]. Rupture of IL with subsequent loss of lymph can result in hypoproteinemia, lymphocytopenia, and malabsorption of fat[4,12].

Lymphatic dysfunction occurs in patients with cirrhosis, although the amount of published data on this subject is extremely limited[2-5]. There have been only a few reports of CA and IL in these patients[10,11]. Lymphedema has not even been considered in cirrhosis patients with persistent peripheral edema. The structural and functional changes in gut lymphatics, which are vital in splanchnic lymph drainage, remain an unexplored area in cirrhosis patients. Despite being a significant factor in maintaining fluid homeostasis, the lymphatic system is commonly ignored when assessing the pathophysiology of refractory ascites (RA) in cirrhosis patients. RA, which represents an extreme form of fluid accumulation, eventually develops in about 10% of cirrhosis patients with advanced decompensation[13].

Over the past two decades, a better understanding of the lymphatic vascular system has emerged; however, little is known about how lymphatic dysfunction contributes to the pathophysiology of advanced cirrhosis. Given the significant role the lymphatic system plays in maintaining the balance of body fluids, it is reasonable to assume that a dysfunctional lymphatic system may contribute to the refractoriness of ascites and edema in cirrhosis patients. Therefore, assessing

lymphatic dysfunction in such patients can provide a novel approach to tissue decongestion. Case studies have shown dietary changes to be effective in controlling ascites and improving liver stiffness in cirrhosis patients with IL [10,14].

In a recent study, treatment with recombinant vascular endothelial growth factor (VEGF) C, a lymphatic-specific growth factor, resulted in decreased portal pressure, enhanced lymphatic drainage, and decreased ascites in cirrhotic rats [15]. However, techniques for assessing lymphatic structure and function in cirrhosis are limited. Lymphography and lymphoscintigraphy lack sufficient accuracy and are not readily available. Lymphedema, IL, and CA are significant surrogate markers of lymphatic dysfunction that need to be investigated in patients with cirrhosis. Hence, this study assessed the magnitude, spectrum, and clinical associations of lymphatic dysfunction in patients with liver cirrhosis and RA using surrogate markers.

MATERIALS AND METHODS

This observational study was conducted in the Department of Gastroenterology, All India Institute of Medical Sciences, Patna, a tertiary care medical center in India. The protocol was approved by the institute's research board, and investigations were conducted according to the Declaration of Helsinki principles. Consecutive adult liver cirrhosis patients between 18 years and 75 years admitted with RA from December 2021 to March 2023 were screened according to the inclusion criteria. RA was diagnosed as ascites that could not be mobilized or the early recurrence of which could not be prevented because of a lack of response to a maximum dose of diuretic treatment or because patients developed complications that precluded the use of an effective dose of diuretics [16]. Liver cirrhosis was diagnosed by clinical features, imaging characteristics, and endoscopic findings. Patients with low serum ascites albumin gradient (< 1.1) ascites, congestive heart failure, primary or metastatic abdominal malignancy, history of radiation therapy, concomitant tuberculosis, history of abdominal surgery, and filariasis were excluded from the study. Cirrhosis patients with severe sepsis, advanced hepatic encephalopathy, and respiratory failure were also excluded from the study.

Demographic and clinical data, including the degree of ascites and duration of RA, were noted at baseline. Estimates of dry weight were made for the corrected body mass index calculation by deducting 15% of the actual weight due to grade-3 ascites and an additional 5% because of peripheral edema. Per the Asian standard, body mass index $> 25 \text{ kg/m}^2$ was considered obese. Routine investigations, including hemograms, liver function tests, kidney function tests, international normalized ratio, fasting blood sugar, and ascitic fluid analysis, including ascitic fluid triglyceride estimation, were performed in all patients, who also underwent a complete etiological workup. The severity of cirrhosis was assessed by Child-Pugh classification and model for end-stage liver disease (MELD) scores. Standard medical therapy, including etiology-specific treatment, was given to all patients.

Assessment of lymphatic dysfunction

The lymphatic dysfunction was ascertained by the presence of one or more of the following surrogate markers: (1) Features of peripheral lymphedema, as evident by physical characteristics such as painless leg edema, pitting or non-pitting, showing orange peel (peau d'orange) appearance, and positive Stemmer sign; (2) Presence of IL on endoscopy and/or histopathological examination of duodenal biopsy specimens; and (3) Presence of CA, as indicated by milky white ascites with elevated triglyceride level $> 110 \text{ mg/dL}$.

The diagnosis of IL on endoscopy was based on the presence of swollen mucosa with scattered white spots suggestive of dilated lacteals. Portal hypertensive duodenopathy (PHD) was considered in the presence of swollen duodenal mucosa with varying degrees of erythema, erosions, friability, and telangiectasia. Irrespective of endoscopic evidence of PHD, biopsies were obtained from the second part of the duodenum (D2), distal to the ampulla of Vater, using standard endoscopic biopsy forceps in all patients. The biopsies obtained were submitted in a vial containing diluted formalin for fixation. Histological examination (hematoxylin and eosin) was performed by an expert pathologist. A markedly dilated vessel in the lamina propria, which on immunohistochemistry showed strong D2-40 positivity, confirmed the presence of IL. Hypoproteinemia was considered when total serum protein was $< 5 \text{ g/dL}$, with a decrease in both albumin and globulin. Lymphocytopenia was considered when the proportion of blood lymphocytes was $< 15\%$ of the total leukocyte count.

Statistical analysis

Because the magnitude and impact of lymphatic dysfunction in cirrhosis are not clearly defined, we conducted this observational study as an exploratory research project with a cross-sectional design intended to include a minimum of 100 eligible patients. Continuous variables, depending on the normalcy of distribution, were expressed as mean \pm standard deviation or median (range). Categorical data were represented as proportion. To compare the normal covariates between patients with and without lymphatic dysfunction, independent sample *t*-test or Mann-Whitney *U* test was used when applicable. Comparisons in categorical variables were performed using χ^2 or Fisher's test. Multivariate regression analysis (MVA) was used to determine independent associates of lymphatic dysfunction. The relevant variables in the univariate analysis with $P < 0.10$ were considered for MVA. However, highly correlated variables were excluded to avoid multicollinearity in regression analysis. The odds ratio (OR) and 95% confidence interval (95%CI) for all significant variables in MVA were reported. Data were analyzed using SPSS software version 23.0 (SPSS, Chicago, IL, United States), wherein $P < 0.05$ was taken as significant.

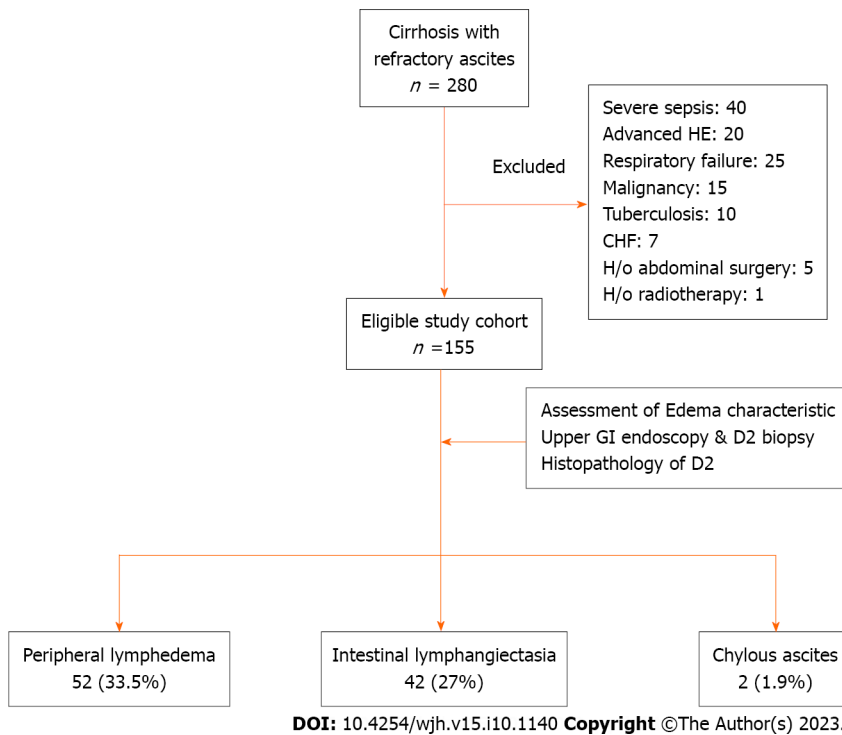


Figure 1 Flow-diagram showing selection, evaluation, and categorization of study population based on lymphatic dysfunction. A total of 280 cirrhosis patients with refractory ascites were screened, and eventually 155 patients were found to be eligible based on the inclusion and exclusion criteria. Subsequent to evaluation, 69 (44.5%) patients were found to have evidence of lymphatic dysfunction in the form of lymphedema, intestinal lymphangiectasia, and chylous ascites, either alone or in combination. CHF: Congestive heart failure; D2: Second part of duodenum; GI: Gastrointestinal; HE: Hepatic encephalopathy; H/o: History of.

RESULTS

A total of 280 cirrhosis patients with RA were screened during the study, but 125 of them were found to be ineligible based on the inclusion and exclusion criteria (Figure 1). The study cohort ultimately consisted of 155 cirrhosis patients with RA.

Cohort characteristics

The mean age of the patients was 49.0 ± 13.1 years with a predominance of male subjects (77.0%). The predominant etiology of cirrhosis involved alcohol (37.4%), followed by non-alcoholic steatohepatitis (35.4%). The median Child-Pugh and MELD scores were 10.3 and 18.1, respectively. Twenty-seven (17.4%) patients were diabetic, 16 (10.3%) patients were obese, and 9 (5.8%) patients had functional chronic kidney disease. All patients had grade-3 ascites, and the median duration of RA was 5 (3–48) mo. On endoscopy, large esophageal varices were found in 60 (38.0%) patients, and severe portal hypertensive gastropathy (PHG) was noted in 35 (22.6%) patients. Additionally, 31 (20.0%) patients had evidence of PHD. The presence of PHD was independent of the severity of PHG as 70.0% of patients with PHD had mild PHG. Other baseline characteristics are specified in Table 1.

Evaluation for lymphatic dysfunction

Edema characteristics: The physical appearance of peripheral edema revealed two distinct patterns (Figure 2). In 52 (33.5%) patients, edema was severe, pitting or non-pitting, with skin texture showing exaggerated dorsal skin creases, hyperkeratosis, and peau d’orange appearance. Moreover, these patients had a positive Stemmer sign, suggesting the presence of lymphedema. In the remaining 103 (66.5%) patients, edema was of the pitting type, skin texture was smooth, and the Stemmer sign was negative.

Endoscopic and histopathological evidence of IL: All patients tolerated the endoscopic procedure with D2 biopsy irrespective of coagulopathy and thrombocytopenia. Eight (5.1%) patients had endoscopic evidence of IL as a whitish enlarged villi on swollen mucosa (Figure 3). On histopathological examination of D2 biopsy specimens, 42 (27.0%) patients revealed markedly dilated vessels in the lamina propria, which on immunohistochemistry with D2-40 confirmed the presence of IL (Figure 4). Thus, 34 (22%) patients revealed IL on histopathological examination without endoscopic evidence of the same.

CA: The median level of triglyceride in ascitic fluid was 19.5 (0–224.0) mg/dL. Based on a physical examination of ascetic fluid and triglyceride levels, 2 patients (1.29%) were found to have CA.

Table 1 Clinical and laboratory characteristics of study population at baseline, n (%)

Parameters	n = 155
Age in yr, mean \pm SD	49.0 \pm 13.1
Male	119 (77.0)
Etiology of cirrhosis	
Alcohol	58 (37.4)
Hepatitis B	23 (14.8)
Hepatitis C	7 (4.5)
NASH	55 (35.4)
Others	14 (9.0)
Duration of RA in mo, median (range)	5 (-48)
MELD scores, median (range)	18.1 \pm 8.6, 17(6-42)
Child-Pugh score, mean \pm SD	10.3 \pm 1.8
Diabetes mellitus	27 (17.4)
Hypertension	12 (7.7)
Corrected body mass index in kg/m ² , mean \pm SD	20.25 \pm 3.40
Obesity	16 (10.3)
Chronic kidney disease	9 (5.8)
Serum total bilirubin in mg/dL, median (range)	2.7 (0.3-28.5)
Serum AST, median (range) U/L	60 (18-672)
Serum ALT, median (range) U/L	32 (4-250)
Serum total protein, mean \pm SD mg/dL	5.8 \pm 0.7
Serum albumin, mean \pm SD mg/dL	2.5 \pm 0.5
Hypoproteinemia	42 (27.0%)
INR, median (range)	1.6 (0.4-6.7)
Serum sodium, mean \pm SD meq/L	130.0 \pm 6.5
Serum potassium, mean \pm SD meq/L	4.07 \pm 2.40
Serum urea in mg/dL, median (range)	34 (12-191)
Creatinine in mg/dL, median (range)	0.9 (0.3-3.7)
Hemoglobin in g/dL, mean \pm SD	8.8 (4.2-65.0)
Total leukocyte count as /cmm, median (range)	6130 (1750-34300)
Lymphocytopenia	72 (46.5)
Esophageal varices	
None	3 (1.9)
Small grade	92 (59.4)
Large grade	60 (38.0)
PHG	
Mild	118 (76.0)
Severe	35 (22.6)
PHD	31 (20.0)
Ascitic fluid analysis	
Cell count as / μ L, median (range)	100 (0-11200)
Protein median in gm/dL, median (range)	1.1 (0.1-3.5)

ADA in U/L, median (range)	10 (1-33)
Triglycerides in mg/dL, median (range)	19.5 (0-224.0)
SAAG, median (range)	2.0 (1.2-4.0)

ADA: Adenosine deaminase; AST: Aspartate aminotransferase; ALT: Alanine aminotransferase; cmm: Cubic millimeter; INR: International normalized ratio; MELD: Model for end-stage liver disease; NASH: Non-alcoholic steatohepatitis; PHG: Portal hypertensive gastropathy; PHD: Portal hypertensive duodenopathy; RA: Refractory ascites; SAAG: Serum ascites albumin gradient.



DOI: 10.4254/wjh.v15.i10.1140 Copyright ©The Author(s) 2023.

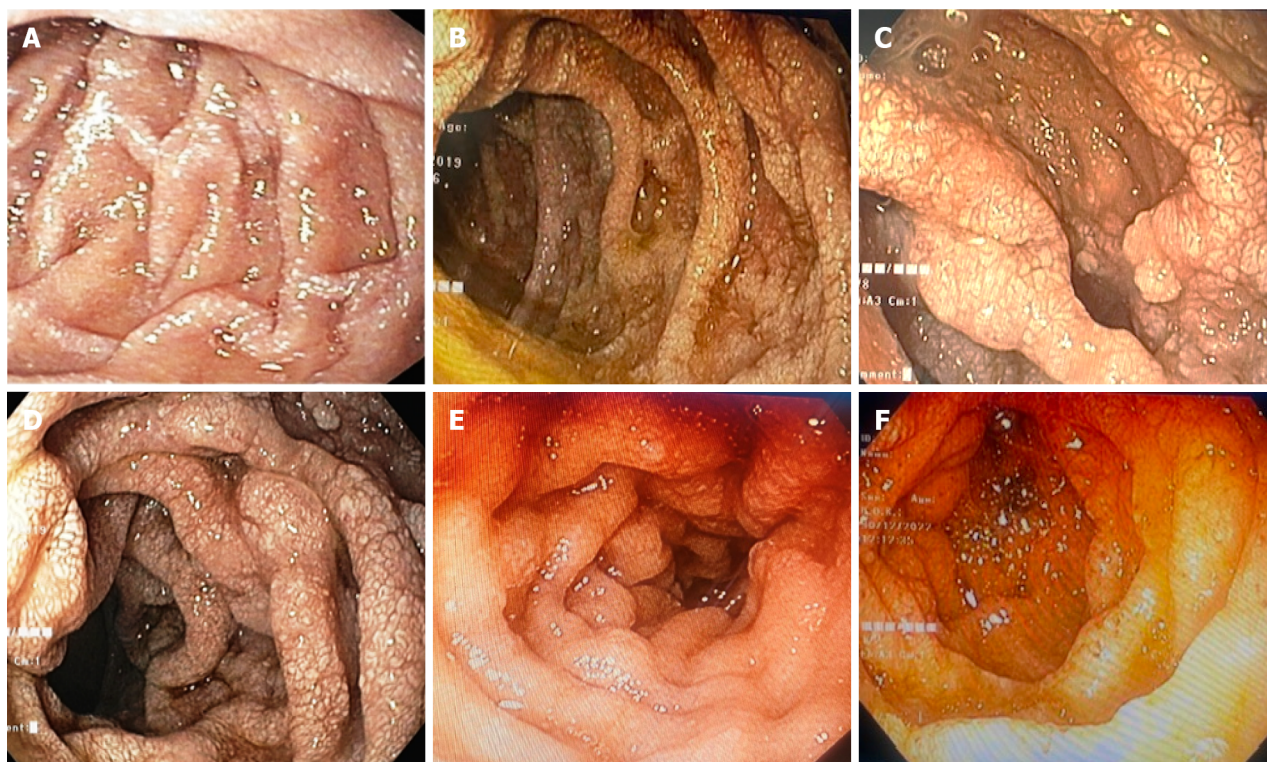
Figure 2 Representative images showing two distinct patterns of peripheral edema among cirrhosis patients with refractory ascites. A and B: Physical appearance of peripheral edema revealed two distinct patterns. In the majority of patients, edema was pitting type and skin texture was smooth (A), which is a finding consistent with edema due to the hydrostatic-oncotic pressure imbalance. In about one-third of patients, edema was severe, mostly non-pitting type with skin texture showing exaggerated dorsal skin creases, hyperkeratosis, and peau d'orange appearance (B), suggesting lymphedema. Some patients with lymphedema also had evidence of cellulitis.

Thus, a total of 69 (44.5%) cirrhosis patients with RA had evidence of lymphatic dysfunction in the forms of lymphedema, IL, and CA either alone or in combination. Lymphedema, present in 52 (33.5%) patients, was the most common manifestation of lymphatic dysfunction. Twenty-six patients had only lymphedema, 18 patients had only IL, 24 patients had both lymphedema and IL, and 2 patients had lymphedema as well as IL and CA.

Clinical characteristics and association of lymphatic dysfunction

Clinically, lymphedema was the most relevant marker of lymphatic dysfunction in the study population. Compared to patients without lymphedema, those with lymphedema were older (mean age of 53.3 years *vs* 47.7 years, $P = 0.007$), had more severe liver disease (median MELD scores of 21 *vs* 14, $P < 0.001$), and had a greater proportion of obese cirrhosis (21.0% *vs* 5.8%, $P = 0.012$). Patients with lymphedema had a higher prevalence of PHD (32.7% *vs* 13.6%, $P = 0.001$) and histopathological evidence of IL (46.2% *vs* 17.5%, $P < 0.001$) than those without it. Furthermore, the mean ascitic fluid triglyceride levels ($P = 0.006$), the proportion of lymphocytopenia (73.0% *vs* 33.0%, $P < 0.001$), and hypoproteinemia (50.0% *vs* 15.5%, $P < 0.001$) were significantly higher in patients with lymphedema than those without it (**Supplementary Table 1**). Lower limb cellulitis was noted in 7 (13.0%) patients with lymphedema *vs* none in patients where lymphedema was absent.

Patients with IL had a higher prevalence of lymphedema than those without IL (57.1% *vs* 23.6%, $P < 0.001$). The frequency of lymphocytopenia and hypoproteinemia was higher in patients with IL than those without it (28.6% *vs* 9.1%, $P = 0.004$). However, IL was not associated with age, severity of liver cirrhosis, or metabolic comorbidities. With regard to the only 2 patients with CA, the levels of triglyceride in their ascitic fluid were observed at 137 mg/dL and 224 mg/dL. Both patients were male, diabetic, and had high Child-Pugh scores (13 and 12). Both had evidence of IL on endoscopy and D2 biopsy.



DOI: 10.4254/wjh.v15.i10.1140 Copyright ©The Author(s) 2023.

Figure 3 Endoscopic evaluation of study population. A-F: Representative endoscopic images of duodenum of study population showing portal hypertensive duodenopathy with evidence of intestinal lymphangiectasia visualized as scattered white spots suggestive of dilated lacteals.

Comparison of clinical and laboratory characteristics of patients with and without lymphatic dysfunctions

The mean age (52.0 ± 13.8 vs 47.8 ± 12.3 , $P < 0.04$) and proportion of obese cirrhosis (16.0% vs 5.8%) were higher in patients with lymphatic dysfunction than those without it. The median duration of RA (6 mo vs 4 mo, $P = 0.02$), median MELD score (18 vs 14, $P = 0.003$), and mean Child-Pugh score (10.0 ± 1.9 vs 9.9 ± 1.6) were similarly higher in patients with lymphatic dysfunction (Table 2). Among the patients with lymphatic dysfunction, lymphopenia was noted in 49 (79.0%) patients, hypoproteinemia in 29 (42.0%) patients, and a combined hypoproteinemia plus lymphopenia in 21 (30.0%) patients. The values of serum bilirubin, serum aspartate aminotransferase, serum alanine aminotransferase, and international normalized ratio were higher, while serum sodium was lower in patients with lymphatic dysfunction compared to those without it.

Independent associations of lymphatic dysfunction

On MVA (Table 3), factors independently associated with lymphatic dysfunction included obesity (OR: 4.2, 95%CI: 1.1–15.2, $P = 0.027$), lymphocytopenia (OR: 6.2, 95%CI: 2.9–13.2, $P < 0.001$), and hypoproteinemia (OR: 3.7, 95%CI: 1.5–8.8, $P = 0.003$). When independent predictors of only lymphedema were assessed by MVA, age (OR: 1.06, $P = 0.002$) and Child-Pugh scores (OR: 1.82, $P = 0.005$) were found to be significant, apart from obesity (OR: 6.3, $P = 0.012$), lymphocytopenia (OR: 3.5, $P = 0.01$), and hypoproteinemia (OR: 7.1, $P = 0.001$) (Table 4).

DISCUSSION

Our study was the first to assess the characteristics of lymphatic dysfunction in liver cirrhosis patients who have RA, an extreme form of fluid accumulation. We found evidence of lymphatic dysfunction in nearly half (44.5%) of the patients. The spectrum of dysfunctions included peripheral lymphedema (33.5%), IL (27.0%), and CA (1.3%). Obesity, lymphocytopenia, and hypoproteinemia independently predicted the presence of lymphatic dysfunction in such patients. Additionally, higher mean ages and Child-Pugh scores were independently associated with peripheral lymphedema, the most common manifestation of lymphatic dysfunctions.

Portal pressure in cirrhosis patients positively correlated with lymphatic flow [17,18]. As cirrhosis progresses, functional deficiencies in the lymphatic system emerge, causing flow stagnation and leakage of lymph from the ectatic lymphatic system [4,5]. These changes lay the ground for the lymphedema development. Our study detected evidence of lymphedema in one-third of cirrhosis patients with RA. Lymphedema should be common in patients with advanced cirrhosis, given the lymphatic failure that often follows cirrhosis, yet there is a dearth of research on it in the existing literature. It is difficult to distinguish early lymphedema from edema due to the change in plasma hydrostatic-oncotic pressure balance. The presence of physical signs, such as a peau d'orange appearance and the positive Stemmer sign, may

Table 2 Comparison of clinical and laboratory characteristics of patients with and without clinically evident lymphatic dysfunction (Univariate analysis)

Parameters	LD present, <i>n</i> = 69	LD absent, <i>n</i> = 86	<i>P</i> value
Age in yr, mean \pm SD	52.0 \pm 13.8	47.8 \pm 12.3	0.040
Male, <i>n</i> (%)	56 (81.2%)	63 (73.3%)	0.320
Etiology of cirrhosis, <i>n</i> (%)			0.050
Alcohol	22 (31.8%)	36 (41.8%)	
Hepatitis	14 (20.2%)	9 (10.4%)	
Hepatitis C	01 (1.4%)	6 (7.0%)	
NASH	28 (40.5%)	27 (31.3%)	
Others	04 (5.7%)	10 (11.6%)	
Duration of RA in mo, median (range)	06 (5-48)	4 (3-36)	0.020
MELD scores, median (range)	18 (7-42)	14 (6-38)	0.003
Child-Pugh score, mean \pm SD	10 \pm 1.9	9.9 \pm 1.6	0.001
Diabetes mellitus, <i>n</i> (%)	15 (21.7%)	12 (14.0%)	0.280
Hypertension, <i>n</i> (%)	06 (8.7%)	6 (7.0%)	0.760
Corrected BMI in kg/m ² , mean \pm SD	22.2 \pm 2.3	20.8 \pm 4.6	0.060
Obesity, <i>n</i> (%)	11 (16.0%)	5 (5.8%)	0.030
Chronic kidney disease, <i>n</i> (%)	4 (5.8%)	5 (5.8%)	1.000
Serum total bilirubin in mg/dL, median (range)	3.6 (0.3-28.5)	2.1 (0.4-26.4)	0.040
Serum AST in U/L, median (range)	67 (18-672)	56 (22-238)	0.010
Serum ALT in U/L, median (range)	34 (4-250)	30 (7-202)	0.020
Serum total protein in mg/dL, mean \pm SD	5.6 \pm 0.6	6.0 \pm 0.8	0.001
Severe hypoproteinemia, <i>n</i> (%)	29 (42.0%)	13 (15.1%)	< 0.001
Albumin in mg/dL, mean \pm SD	2.4 \pm 0.5	2.6 \pm 0.5	0.005
INR, median (range)	1.8 (0.8-3.8)	1.5 (0.4-6.7)	0.007
Serum sodium in meq/L, mean \pm SD	128.0 \pm 7.2	131.0 \pm 5.5	0.001
Serum potassium in meq/L, mean \pm SD	4.2 \pm 1.2	3.9 \pm 2.4	0.130
Serum urea, median (range) mg/dL	42 (12-191)	31 (12-188)	0.060
Creatinine in mg/dL, median (range)	1.0 (0.4-2.9)	0.9 (0.3-3.7)	0.160
Hemoglobin in g/dL, mean \pm SD	8.6 (5.3-12.3)	8.8 (4.2-15)	0.360
Total leukocyte count as /cmm, median (range)	7000 (1750-34300)	5550 (2050-12680)	0.960
Lymphocytopenia, <i>n</i> (%)	49 (79.0%)	23 (26.7%)	< 0.001
Combined lymphocytopenia and hypoproteinemia, <i>n</i> (%)	21 (30.4%)	2 (2.3%)	< 0.001
Esophageal varices, <i>n</i> (%)			0.610
None	02 (2.9%)	1 (1.2%)	
Small grade	40 (58.0%)	52 (60.5%)	
Large grade	27 (39.1%)	33 (38.4%)	
PHG, <i>n</i> (%)			0.025
Mild	46 (66.7%)	72 (84.0%)	
Severe	21 (30.4%)	14 (16.0%)	
PHD, <i>n</i> (%)	22 (31.8%)	9 (10.4%)	

Ascitic fluid analysis			
Cell count as / μ L, median (range)	150 (0-3500)	100 (0-1120)	0.970
Protein in gm/dL, median (range)	0.9 (0.1-2.5)	1.1 (0.6-3.5)	0.370
ADA in U/L, median (range)	8.5 (1.0-33.0)	11.0 (2.0-30.0)	0.200
Triglycerides in mg/dL, median (range)	23 (2-224)	18 (0-64)	0.070
SAAG, median (range)	1.8 (1.2-4.0)	2.1 (1.2-3.5)	0.390
Lower limb cellulitis	7 (10.0%)	0	0.003

ADA: Adenosine deaminase; AST: Aspartate aminotransferase; ALT: Alanine aminotransferase; BMI: Body mass index; cmm: Cubic millimeter; INR: International normalized ratio; LD: Lymphatic dysfunction; MELD: Model for end-stage liver disease; NASH: Non-alcoholic steatohepatitis; PHG: Portal hypertensive gastropathy; PHD: Portal hypertensive duodenopathy; RA: Refractory ascites; SAAG: Serum ascites albumin gradient.

Table 3 Multivariate regression analysis for determining independent associations of lymphatic dysfunction in cirrhosis patients with refractory ascites

Parameters	P value	OR	95%CI
Obesity	0.027	4.2	1.1-15.2
Lymphocytopenia	< 0.001	6.2	2.9-13.2
Hypoproteinemia	0.003	3.7	1.5-8.8

95%CI: 95% Confidence interval; OR: Odds ratio.

Table 4 Multivariate analysis for determining independent associations of lymphedema

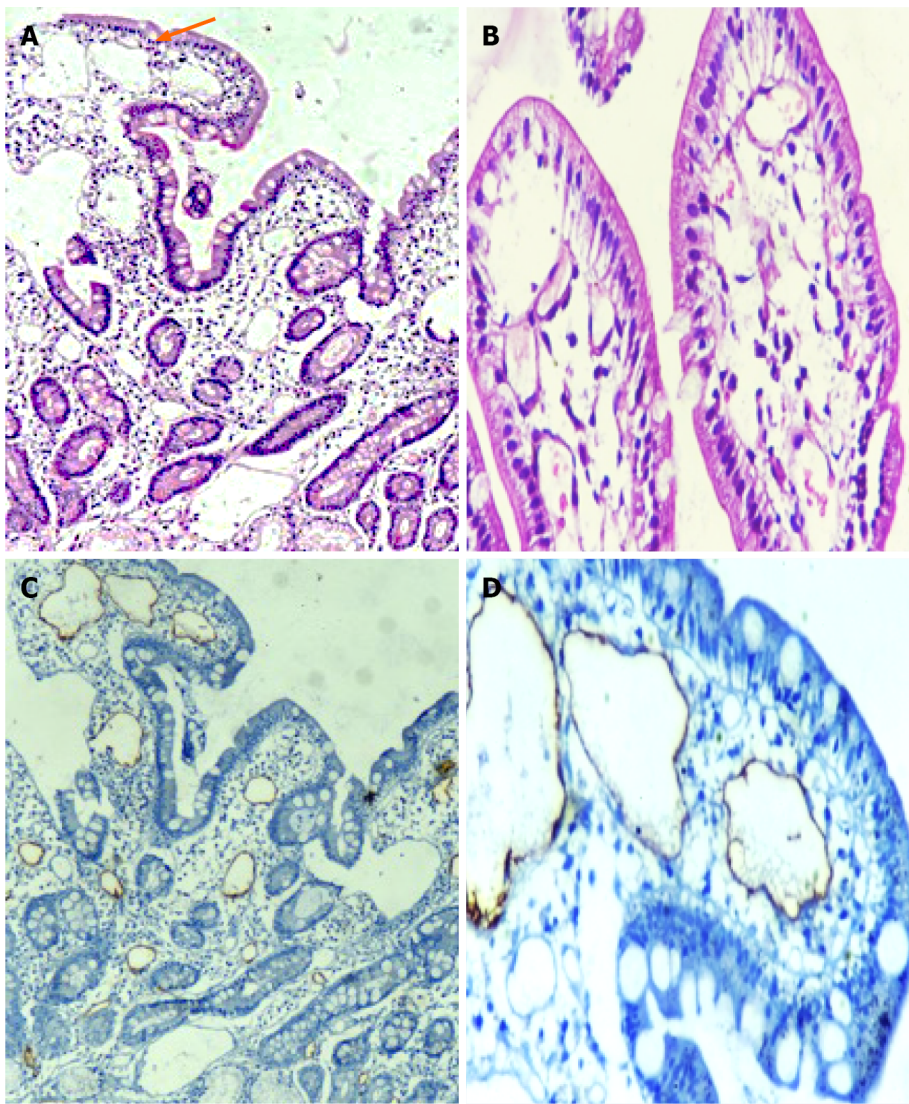
Parameters	P value	OR	95%CI
Age	0.002	1.06	1.02-1.10
Child-Pugh score	0.005	1.82	1.19-2.79
Obesity	0.012	6.33	1.49-26.90
Hypoproteinemia	0.001	7.10	2.44-20.70
Lymphocytopenia	0.011	3.55	1.34-9.38

95%CI: 95% Confidence interval; OR: Odds ratio.

reflect the advanced stage of lymphedema. Patients with lymphedema are more susceptible to cellulitis due to their hyperkeratotic surface, deep fissures, stagnant lymph, and weakened immunity. In our study, 13% of lymphedema patients had lower limb cellulitis, compared to none in those who did not have lymphedema. In fact, lymphedema is considered the most important risk factor for cellulitis[19].

In our study, 31 (20.0%) patients revealed evidence of PHD on endoscopy, though only 8 (5.1%) patients had macroscopic evidence of IL. PHD in cirrhosis has been reported at 8.4% by Menchén *et al*[20], 14% by Misra *et al*[21], and 51% by Barakat *et al*[22] in earlier studies. No study has so far reported the endoscopic prevalence of IL in cirrhosis patients. Notably, 27.0% of the study subjects had evidence of IL only on histological examination of D2 biopsy specimens. Very few studies have examined histopathological changes in the duodenum of cirrhosis patients[15,21,22]. Barakat *et al*[22] reported marked capillary congestion and capillary angiogenesis in duodenal mucosa of cirrhosis patients. The changes were mostly marked in the subepithelial location, which on the immunohistochemical stain was CD34 positive. Notably, CD34 is a pan-endothelial marker that can also be positive in the lymphatic endothelium[23]. As a selective marker of lymphatic endothelium (D2-40) was not used in that study, it is possible that IL could have been misinterpreted as capillary congestion and angiogenesis. In a recent prospective study, IL was found to be significantly higher in patients with decompensated cirrhosis than in compensated cirrhosis, and the density of IL on duodenal biopsy was associated with systemic inflammation and 3-mo mortality[24]. It is believed that IL in cirrhosis results from a persistent rise in lymphatic pressure secondary to PHT. However, it is unclear why IL does not manifest in all cirrhotic patients despite sustained PHT.

Because intestinal lymph contains proteins, chylomicrons, and lymphocytes, rupture of IL with subsequent leakage of lymph into the intestine can lead to hypoproteinemia and lymphocytopenia[4,5]. Regardless of the presence of IL, study



DOI: 10.4254/wjh.v15.i10.1140 Copyright ©The Author(s) 2023.

Figure 4 Histological examination of second part of duodenum biopsy specimens. A-D: Representative histopathological images (hematoxylin and eosin) of duodenum showing markedly dilated vessels in the lamina propria (A and B), which on immunohistochemistry showing strong D2-40 positivity (C and D), confirming the presence of intestinal lymphangiectasia.

participants with lymphatic dysfunction displayed lymphocytopenia in 79.0% of cases and hypoproteinemia in 42.0% of the cases, indicating that lymphatic dysfunction at non-enteric sites can also result in loss of lymphocytes and protein from circulation. CA, which was observed in 2 patients, is a rare complication caused by rupture of subserosal lymphatic vessels secondary to a sustained high portal pressure[25]. As intestinal lymph contains triglyceride-rich fat droplets (chylomicrons), CA appear milky in color. Notably, the rupture of hepatic lymphatics does not produce CA as it is devoid of fat droplets. Although < 1% of cirrhosis patients develop CA, cirrhosis has been attributed to 11% of atraumatic CA cases[11,26,27].

Our study revealed several risk factors and indicators of lymphatic dysfunction, including older age, higher MELD and Child-Pugh scores, obesity, lymphocytopenia, and hypoproteinemia, which may point to lymphatic dysfunction in a given patient. It is well recognized that aging alters the structure and function of the lymphatic system. Important aging-related lymphatic alterations include impaired contractile function, decreased nitric oxide lymphatic collectors, and loss of endothelial glycocalyx[28]. Similarly, recent evidence suggests that obesity can significantly impair lymphatic function and increase risk of lymphedema, whereas losing weight can enhance lymphatic functioning[29]. Moreover, lymphatic dysfunction is also involved in the pathogenesis of obesity and obesity-related chronic inflammation[30].

The pathophysiological process underlying lymphatic dysfunction in patients with cirrhosis needs to be explored at the molecular level. In addition to old age and obesity, other variables affecting lymphatic function in patients with cirrhosis include diabetes, dyslipidemia, neurohormonal alterations, and chronic inflammation[4,31,32]. Intestinal lymphatic function may be impacted by intestinal dysmotility and intestinal dysbiosis typically found in advanced cirrhosis[33,34]. Ribera *et al*[5] discovered that excess nitric oxide production by lymphatic endothelial cells was responsible for poor lymphatic drainage in cirrhotic rats with ascites. Interestingly, when these rats were given a nitric oxide synthase inhibitor, lymphatic drainage was improved and the ascitic volume was much reduced, suggesting an influential role for nitric oxide in the dysfunction of the lymphatic system.

From a therapeutic standpoint, the lymphatic dysfunction in cirrhosis patients with RA are worth evaluating because it would call for using different strategies for fluid mobilization. Some clinical and experimental studies have found improved ascites with dietary changes, VEGF C, and nitric oxide synthase inhibitors in cirrhosis subjects with evident lymphatic dysfunction[8,14,15]. Thus, future efforts to mobilize fluid in these patients might focus on methods to improve lymphatic drainage. Unfortunately, there is no recommendation on how to diagnose and evaluate lymphatic functions in patients with cirrhosis. There are many imaging techniques, such as lymphoscintigraphy and magnetic resonance lymphography, but they are frequently constrained by poor resolution, a lack of standardization, the need for invasive procedures, the danger of radiation exposure, and a lack of accessibility[4]. Low attenuation rims surrounding the portal veins and the intrahepatic vena cava on the computed tomography scan correspond to the lymph congestion secondary to impaired lymphatic drainage[35]. However, the clinical implications of these findings in cirrhotic patients need to be determined. In light of these limitations, surrogate markers of lymphatic dysfunction based on physical examination, routine blood investigations, and endoscopy can be an important leap forward.

Our study data was novel, relevant, and generalizable. It sheds light on a well-known but understudied area that calls for further research to determine the role of lymphatics in the complication of liver cirrhosis. It would be interesting to further investigate whether use of prolymphangiogenic substances like VEGF C and D can enhance lymphatic functioning and fluid mobilization in patients with advanced cirrhosis. It would also be worthwhile investigating whether the placement of a transjugular intrahepatic portosystemic shunt aids in improving lymphatic functions in cirrhosis patients, given the involvement of PHT in lymphatic stasis and leakage.

There were some limitations in our study. First, our study was an association study, so causal inference cannot be drawn. We also did not use any lymphangiographic methods to demonstrate lymphatic stasis or leakage. Further, the diagnosis of lymphedema based on physical characteristics has inherent limitations and is at risk of subjective bias and misclassification error in borderline cases. Hence, further studies are recommended to address such gaps.

CONCLUSION

In conclusion, patients with advanced liver cirrhosis frequently exhibit signs of overt lymphatic dysfunction. Given the crucial role of the lymphatic system in volume management, its failure may be at the root of many complications of cirrhosis, including RA. Therefore, addressing the lymphatic system in patients with liver cirrhosis may offer a novel strategy in decongesting tissue and improving outcomes.

ARTICLE HIGHLIGHTS

Research background

Lymphatic dysfunction occurs in patients with liver cirrhosis, although the published data on this subject is extremely limited. Given the significant role the lymphatic system plays in maintaining the balance of body fluids, it is reasonable to assume that a dysfunctional lymphatic system may contribute to the refractoriness of ascites and edema in cirrhosis patients.

Research motivation

From a therapeutic standpoint, it can be extremely important to evaluate lymphatic dysfunction in cirrhosis patients with refractory ascites (RA) since it would call for using different strategies for fluid mobilization.

Research objectives

The objectives of this study were to assess the magnitude, spectrum, and clinical associations of lymphatic dysfunction in cirrhosis patients with RA using surrogate markers such as lymphedema, intestinal lymphangiectasia (IL), and chylous ascites (CA).

Research methods

This observational study was conducted as an exploratory project with a cross-sectional design and included 155 consecutive cirrhosis patients with RA. The presence of clinical signs of lymphedema, IL on duodenal biopsy, and CA were used as surrogate markers of lymphatic dysfunction.

Research results

The study found evidence of lymphatic dysfunction in nearly half of the cirrhosis patients with RA. The spectrum of dysfunction included peripheral lymphedema in 33.5%, intestinal IL in 27.0%, and CA in 1.3%. Obesity, lymphocytopenia, and hypoproteinemia were independently associated with the presence of lymphatic dysfunction in such patients.

Research conclusions

Lymphatic dysfunction is common in cirrhosis patients with RA. Hypoproteinemia and lymphocytopenia are significant indicators of its presence.

Research perspectives

Evaluation of lymphatic dysfunction in cirrhosis patients with RA can serve as a guide for future research into novel approaches for tissue decongestion.

FOOTNOTES

Author contributions: Arya R and Kumar R designed the manuscript, collected data, and wrote the manuscript; Kumar T contributed to the histopathological examination and data collection; Kumar S, Anand U, Priyadarshi RN, and Maji T collected data and provided critical input for the manuscript.

Institutional review board statement: The study was reviewed and approved by the Institute research board (Reference No: AIIMS/Pat/IRC/2020/PGTh/Jan 21-22).

Informed consent statement: Informed written consent was obtained from all study participants.

Conflict-of-interest statement: The authors declare that they have no conflicts of interest for this article.

Data sharing statement: No additional data are available.

STROBE statement: The authors have read the STROBE Statement checklist of items, and the manuscript was prepared and revised according to the STROBE Statement checklist of items.

Open-Access: This article is an open-access article that was selected by an in-house editor and fully peer-reviewed by external reviewers. It is distributed in accordance with the Creative Commons Attribution NonCommercial (CC BY-NC 4.0) license, which permits others to distribute, remix, adapt, build upon this work non-commercially, and license their derivative works on different terms, provided the original work is properly cited and the use is non-commercial. See: <https://creativecommons.org/licenses/by-nc/4.0/>

Country/Territory of origin: India

ORCID number: Rahul Arya 0000-0003-3714-0990; Tarun Kumar 0000-0001-5554-3975; Sudhir Kumar 0000-0001-7117-1382; Utpal Anand 0000-0003-0653-4129; Rajeev Nayan Priyadarshi 0000-0003-2890-8910; Tanmoy Maji 0000-0002-5115-3563.

S-Editor: Lin C

L-Editor: Filipodia

P-Editor: Lin C

REFERENCES

- 1 Olszewski WL. The lymphatic system in body homeostasis: physiological conditions. *Lymphat Res Biol* 2003; 1: 11-21; discussion 21 [PMID: 15624317 DOI: 10.1089/15396850360495655]
- 2 Vollmar B, Wolf B, Siegmund S, Katsen AD, Menger MD. Lymph vessel expansion and function in the development of hepatic fibrosis and cirrhosis. *Am J Pathol* 1997; 151: 169-175 [PMID: 9212743]
- 3 Chung C, Iwakiri Y. The lymphatic vascular system in liver diseases: its role in ascites formation. *Clin Mol Hepatol* 2013; 19: 99-104 [PMID: 23837133 DOI: 10.3350/cmh.2013.19.2.99]
- 4 Kumar R, Anand U, Priyadarshi RN. Lymphatic dysfunction in advanced cirrhosis: Contextual perspective and clinical implications. *World J Hepatol* 2021; 13: 300-314 [PMID: 33815674 DOI: 10.4254/wjh.v13.i3.300]
- 5 Ribera J, Pauta M, Melgar-Lesmes P, Tugues S, Fernández-Varo G, Held KF, Soria G, Tudela R, Planas AM, Fernández-Hernando C, Arroyo V, Jiménez W, Morales-Ruiz M. Increased nitric oxide production in lymphatic endothelial cells causes impairment of lymphatic drainage in cirrhotic rats. *Gut* 2013; 62: 138-145 [PMID: 22267600 DOI: 10.1136/gutjnl-2011-300703]
- 6 Browse NL, Stewart G. Lymphoedema: pathophysiology and classification. *J Cardiovasc Surg (Torino)* 1985; 26: 91-106 [PMID: 3884629]
- 7 Aller MA, Prieto I, Argudo S, de Vicente F, Santamaría L, de Miguel MP, Arias JL, Arias J. The interstitial lymphatic peritoneal mesothelium axis in portal hypertensive ascites: when in danger, go back to the sea. *Int J Inflam* 2010; 2010: 148689 [PMID: 21152120 DOI: 10.4061/2010/148689]
- 8 Tanaka M, Iwakiri Y. The Hepatic Lymphatic Vascular System: Structure, Function, Markers, and Lymphangiogenesis. *Cell Mol Gastroenterol Hepatol* 2016; 2: 733-749 [PMID: 28105461 DOI: 10.1016/j.jcmgh.2016.09.002]
- 9 Chindaratana K, Tanpowpong P, Lertudomphonwanit C, Treepongkaruna S. Gastrointestinal protein loss in children with portal hypertension. *Indian J Gastroenterol* 2021; 40: 333-337 [PMID: 32970314 DOI: 10.1007/s12664-020-01079-y]
- 10 Kumar R, Kumar T, Anand U, Priyadarshi RN. Intestinal Lymphangiectasia Associated With Refractory Ascites in a Cirrhosis Patient. *Cureus* 2021; 13: e12567 [PMID: 33564554 DOI: 10.7759/cureus.12567]
- 11 Cheng WS, Gough IR, Ward M, Croese J, Powell LW. Chylous ascites in cirrhosis: a case report and review of the literature. *J Gastroenterol Hepatol* 1989; 4: 95-99 [PMID: 2490947 DOI: 10.1111/j.1440-1746.1989.tb00811.x]
- 12 Freeman HJ, Nimmo M. Intestinal lymphangiectasia in adults. *World J Gastrointest Oncol* 2011; 3: 19-23 [PMID: 21364842 DOI: 10.4251/wjgo.v3.i2.19]
- 13 Wong F. Management of refractory ascites. *Clin Mol Hepatol* 2023; 29: 16-32 [PMID: 35676862 DOI: 10.3350/cmh.2022.0104]

- 14 **Milazzo L**, Peri AM, Lodi L, Gubertini G, Ridolfo AL, Antinori S. Intestinal lymphangiectasia and reversible high liver stiffness. *Hepatology* 2014; **60**: 759-761 [PMID: [24449480](#) DOI: [10.1002/hep.27025](#)]
- 15 **Juneja P**, Ruhina Rahman SN, Jakhar D, Mourya AK, Tripathi DM, Kaur I, Tiwari V, Rohilla S, Gupta A, Rawal P, Baweja S, Rastogi A, Naidu VGM, Sarin SK, Banerjee S, Kaur S. Recombinant VEGF-C (Cys156Ser) improves mesenteric lymphatic drainage and gut immune surveillance in experimental cirrhosis. *JHEP Rep* 2023; **5**: 100816 [PMID: [37663117](#) DOI: [10.1016/j.jhepr.2023.100816](#)]
- 16 **Fukui H**, Kawaratan H, Kaji K, Takaya H, Yoshiji H. Management of refractory cirrhotic ascites: challenges and solutions. *Hepat Med* 2018; **10**: 55-71 [PMID: [30013405](#) DOI: [10.2147/HMER.S136578](#)]
- 17 **Barrowman JA**, Granger DN. Effects of experimental cirrhosis on splanchnic microvascular fluid and solute exchange in the rat. *Gastroenterology* 1984; **87**: 165-172 [PMID: [6724260](#)]
- 18 **Yokomori H**, Oda M, Kaneko F, Kawachi S, Tanabe M, Yoshimura K, Kitagawa Y, Hibi T. Lymphatic marker podoplanin/D2-40 in human advanced cirrhotic liver--re-evaluations of microlymphatic abnormalities. *BMC Gastroenterol* 2010; **10**: 131 [PMID: [21059220](#) DOI: [10.1186/1471-230X-10-131](#)]
- 19 **Dupuy A**, Benchikhi H, Roujeau JC, Bernard P, Vaillant L, Chosidow O, Sassolas B, Guillaume JC, Grob JJ, Bastuji-Garin S. Risk factors for erysipelas of the leg (cellulitis): case-control study. *BMJ* 1999; **318**: 1591-1594 [PMID: [10364117](#) DOI: [10.1136/bmj.318.7198.1591](#)]
- 20 **Menchén L**, Ripoll C, Marín-Jiménez I, Colón A, Gómez-Camarero J, González-Asanza C, Menchén P, Cos E, Bañares R. Prevalence of portal hypertensive duodenopathy in cirrhosis: clinical and haemodynamic features. *Eur J Gastroenterol Hepatol* 2006; **18**: 649-653 [PMID: [16702855](#) DOI: [10.1097/00042737-200606000-00012](#)]
- 21 **Misra V**, Misra SP, Dwivedi M, Gupta SC. Histomorphometric study of portal hypertensive enteropathy. *Am J Clin Pathol* 1997; **108**: 652-657 [PMID: [9384446](#) DOI: [10.1093/ajcp/108.6.652](#)]
- 22 **Barakat M**, Mostafa M, Mahran Z, Soliman AG. Portal hypertensive duodenopathy: clinical, endoscopic, and histopathologic profiles. *Am J Gastroenterol* 2007; **102**: 2793-2802 [PMID: [17900330](#) DOI: [10.1111/j.1572-0241.2007.01536.x](#)]
- 23 **Basha BM**, Hsi ED. Immunohistochemical Analysis of Endothelial Cells in Vascular Transformation of Lymph Node Sinuses: Vascular or Lymphatic Differentiation? *Appl Immunohistochem Mol Morphol* 2019; **27**: 482-489 [PMID: [29629951](#) DOI: [10.1097/PAL.0000000000000661](#)]
- 24 **Juneja P**, Sharma A, Shasthry SM, Kumar G, Tripathi DM, Rajan V, Rastogi A, Sarin SK, Kaur S. Podoplanin-positive dilated lymphatic vessels in duodenum associates with three-month mortality in patients with cirrhosis. *Front Physiol* 2023; **14**: 1045983 [PMID: [37304826](#) DOI: [10.3389/fphys.2023.1045983](#)]
- 25 **Lizaola B**, Bonder A, Trivedi HD, Tapper EB, Cardenas A. Review article: the diagnostic approach and current management of chylous ascites. *Aliment Pharmacol Ther* 2017; **46**: 816-824 [PMID: [28892178](#) DOI: [10.1111/apt.14284](#)]
- 26 **Tsauo J**, Shin JH, Han K, Yoon HK, Ko GY, Ko HK, Gwon DI. Transjugular Intrahepatic Portosystemic Shunt for the Treatment of Chylothorax and Chylous Ascites in Cirrhosis: A Case Report and Systematic Review of the Literature. *J Vasc Interv Radiol* 2016; **27**: 112-116 [PMID: [26723922](#) DOI: [10.1016/j.jvir.2015.09.022](#)]
- 27 **Steinemann DC**, Dindo D, Clavien PA, Nocito A. Atraumatic chylous ascites: systematic review on symptoms and causes. *J Am Coll Surg* 2011; **212**: 899-905.e1 [PMID: [21398159](#) DOI: [10.1016/j.jamcollsurg.2011.01.010](#)]
- 28 **Shang T**, Liang J, Kapron CM, Liu J. Pathophysiology of aged lymphatic vessels. *Aging (Albany NY)* 2019; **11**: 6602-6613 [PMID: [31461408](#) DOI: [10.18632/aging.102213](#)]
- 29 **Kataru RP**, Park HJ, Baik JE, Li C, Shin J, Mehrara BJ. Regulation of Lymphatic Function in Obesity. *Front Physiol* 2020; **11**: 459 [PMID: [32499718](#) DOI: [10.3389/fphys.2020.00459](#)]
- 30 **Jiang X**, Tian W, Nicolls MR, Rockson SG. The Lymphatic System in Obesity, Insulin Resistance, and Cardiovascular Diseases. *Front Physiol* 2019; **10**: 1402 [PMID: [31798464](#) DOI: [10.3389/fphys.2019.01402](#)]
- 31 **Davis MJ**, Lane MM, Davis AM, Durtschi D, Zawieja DC, Muthuchamy M, Gashev AA. Modulation of lymphatic muscle contractility by the neuropeptide substance P. *Am J Physiol Heart Circ Physiol* 2008; **295**: H587-H597 [PMID: [18539752](#) DOI: [10.1152/ajpheart.01029.2007](#)]
- 32 **Rehal S**, Blanckaert P, Roizes S, von der Weid PY. Characterization of biosynthesis and modes of action of prostaglandin E2 and prostacyclin in guinea pig mesenteric lymphatic vessels. *Br J Pharmacol* 2009; **158**: 1961-1970 [PMID: [19922540](#) DOI: [10.1111/j.1476-5381.2009.00493.x](#)]
- 33 **Unthank JL**, Bohlen HG. Lymphatic pathways and role of valves in lymph propulsion from small intestine. *Am J Physiol* 1988; **254**: G389-G398 [PMID: [3348405](#) DOI: [10.1152/ajpgi.1988.254.3.G389](#)]
- 34 **Suh SH**, Choe K, Hong SP, Jeong SH, Mäkinen T, Kim KS, Alitalo K, Surh CD, Koh GY, Song JH. Gut microbiota regulates lacteal integrity by inducing VEGF-C in intestinal villus macrophages. *EMBO Rep* 2019; **20** [PMID: [30783017](#) DOI: [10.15252/embr.201846927](#)]
- 35 **Aspestrand F**, Schrumph E, Jacobsen M, Hanssen L, Endresen K. Increased lymphatic flow from the liver in different intra- and extrahepatic diseases demonstrated by CT. *J Comput Assist Tomogr* 1991; **15**: 550-554 [PMID: [2061465](#) DOI: [10.1097/00004728-199107000-00004](#)]



Published by **Baishideng Publishing Group Inc**
7041 Koll Center Parkway, Suite 160, Pleasanton, CA 94566, USA

Telephone: +1-925-3991568

E-mail: bpgoffice@wjgnet.com

Help Desk: <https://www.f6publishing.com/helpdesk>

<https://www.wjgnet.com>

