

Response

To: Editor-in-Chief

Associate Editor, World Journal of Clinical Cases

Dear Editor-in-Chief,

Thank you for giving us the opportunity to submit a revised draft of the manuscript for publication in the World Journal of Clinical Cases. We sincerely appreciate the time and effort that you and the reviewer dedicated to providing your professional review work and valuable feedback on our article. As you are concerned, there are several problems that need to be addressed. According to your nice suggestions, we have made extensive corrections to our previous draft to improve the quality, the detailed corrections are listed below.

We hope that you and the reviewers find the major revision acceptable, and we look forward to hearing from you about the final decision on our submission.

Sincerely yours,

Jing Zhang (on behalf of all the co-authors)

Comments from Reviewer:

Specific Comments to Authors:

Q1: Please replace “Case Summary” with abstract.

Response: Thank you for your suggestion. We corrected the ‘Case Summary’ into ‘abstract’.

Q2: Line 1: please replace “with the chief” with the main.

Response: Thank you for your suggestion. We corrected the ‘with the chief’ into ‘the main’.

Q3: Please specify which nickel-titanium wires were used.

Response: Thank you for your suggestion. We added the specify nickel-titanium wire of we used in the ‘*ABSTRACT*’ section.

Q4: Replace “Here, we report” by this clinical case shows...

Response: Thank you for your suggestion. We corrected the ‘Here, we report’ into ‘this clinical case shows...’.

Q5: Remove the file: History of present illness In FINAL DIAGNOSIS, add the malocclusion diagnosis In OUTCOME AND FOLLOW-UP.

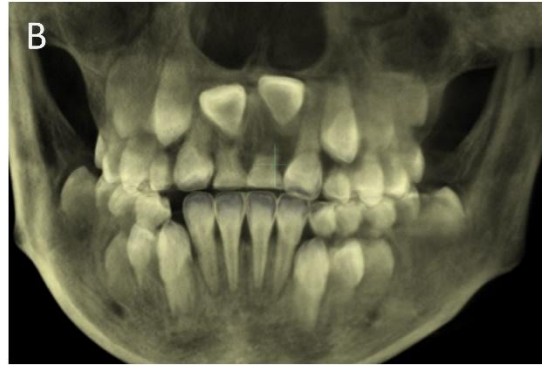
Response: Thank you for your suggestion. The History of present illness was deleted. We have specified the malocclusion diagnosis after treatment in the 'OUTCOME AND FOLLOW-UP' part.

Q6: Replace "with respect to" with concerning.

Response: Thank you for your suggestion. We corrected the 'with respect to' into 'concerning'.

Q7: It's mandatory to add initial intraoral photographs in order to know the initial malocclusion.

Response: Thank you for your suggestion. We have described intraoral examination showed an early mixed dentition and an Angle Class I molar relationship in 'Physical examination' part. We have the initial intraoral photographs as follows and the imageological examination showed an early mixed dentition and an Angle Class I molar relationship. Besides, we possess a thoroughly documented medical record manual, showing that this patient had a Class I skeletal occlusion with a balanced facial pattern.



A: Pretreatment panoramic radiograph.

B: 3-D reconstruction – axial plane.