

Supplementary data

Fig. S1

TLPs(triple-layered particles) and DLPs of rotavirus strain ZTR-68 after CsCl centrifuge.

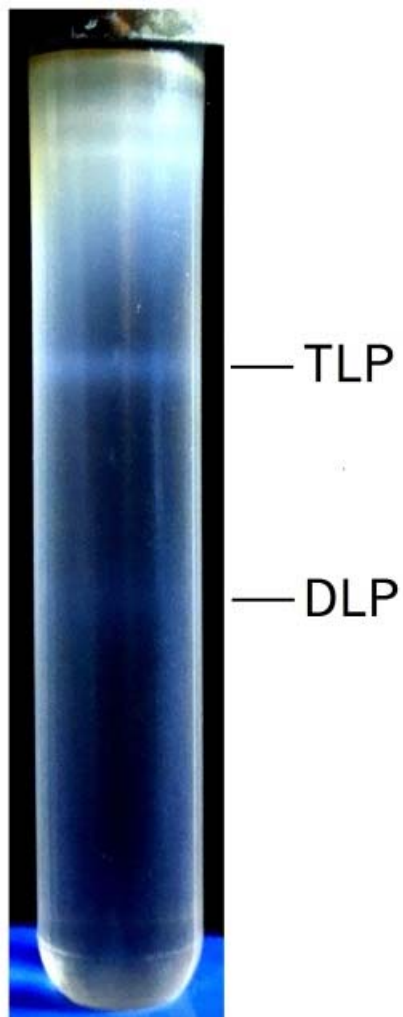


Table S1

Primers sequences used in reverse transcription polymerase chain reaction for ZTR-68 structural genes and nonstructural genes sequencing. F represents forward, and R represents reverse.

Gene		Sequence (5'-3')
NSP1	NSP1-F	CCATGGCTACTTTCAAAGATGCTTG
	NSP1-R	CTAGGCGCTACTCTAGTGCAGAGAG
	NSP1-Fi	GAATCATAACAGTCTTGAAGTTAGGAG
	NSP1-Ri	TCTCTATTTTCATTATTCAACGTCAG
	NSP1-Fii	TCTTCTGATTGGAACGAAGCA
	NSP1-Rii	GTTGCGTAAACATTCTACATCTGGT
NSP2	NSP2-F	CGTTTGAGCCTTGCGGTGTAG
	NSP2-R	TATTCTTGCTTCGCCATCATCAT
	NSP2-Fi	CATGGCTGAGCTAGCTTGC
	NSP2-Ri	AAGCGAATTAAATTCCAACATG
NSP3	NSP3-F	TGGTTGCTGCTCAAGATGGA
	NSP3-R	CAGTGTTAGCTTTTAACTATTGTGCTC
	NSP3-Fi	GTCTACTCAGCAGATGGTAAGCTCT
	NSP3-Ri	TGCTCATAGAGGGTCATGTGTAG
NSP4	NSP4-F	AGAGCGCGTGCGGAAAGATG
	NSP4-R	TTCCATTAAACGTCCAACACTCGC
	NSP4-Fi	CTTGCCGACCTCAACTACACA
	NSP4-Ri	CTGGATTGGTTAAACGGGATT
NSP5/6	NSP5/6-F	AGTGATGTCTCTCAGCATTGACGTA
	NSP5/6-R	TCCCTAGTGTGCTCTCAGGTTAACA
VP1	VP1-1F	CTATTAAAGCTGTACAATGGGGAAG
	VP1-1R	TTACGACCAAATTTAAGCTGC
	VP1-1Fi	GTTTACAATTCACAATCTGCAGTTC
	VP1-1Ri	TTGATTCACCATTTGAAGCTG
	VP1-2F	CACTGAAGATGTAGATGGTGAGATG
	VP1-2R	TCGTTCTGACGGAAATAACCT
	VP1-2Fi	CAATGAGTATACAATGTTAATTAGAGATG
	VP1-2Ri	TAGTGATCCAGTAATGGCTACAGAT
	VP1-2Fii	AACACACAGCCATTTAGAAAAGG
	VP1-2Rii	CTCCTGAAGCAACAGCACCA
VP2	VP2-1F	GGCTCAATGGCGTACAGGA
	VP2-1R	CTTGAGACATTTTCTGTATCTGAGC
	VP2-1Fi	GAGCTAAACGTGAAAACCTACCA
	VP2-1Ri	CTGAGCTTCAGTTGAACTAATTCT
	VP2-1Fii	AGAGATGCTGGTAAAGTTGTAGAT
	VP2-1Rii	TTCAGAATCTACAACCTTACCAGCA
	VP2-2F	GCCATCAACAGCAAGATATATTAGA
	VP2-2R	GTAATGATAGCCACTGCGTCGT
	VP2-2Fi	ACCAAATTTATTGCAAGATAGACTA
	VP2-2Ri	TAATTCGTTTCGTTATAATTGAATG

VP3	VP2-3F	ACTCTCACTACCGAAAAATTACAAT
	VP2-3R	TTGGCGTTTACAGTTCGTTC
	VP2-3Fi	CAATTAACCTTCTGTCACATCTTTATG
	VP2-3Ri	AAGCAACTGCGTTAATGGGT
	VP2-3FN	ACTCTCACTACCGAAAGATTACAGT
	VP2-3FiN	CAGTTAACTTCTGTCACATCTTTATG
	VP2-3Fii	CCACAGTAATTCCAAGTCCACAAAC
	VP2-3RiN	AATGCGCATATTGTCAAAAAGC
	VP3-1F	TAGTAGTGCGTTTTACCTCTGATGG
	VP3-1R	TGGAGCTGAACCAAGCATGTATA
	VP3-1Fi	GATGGTGTAAGCATGAAAGTATTAG
	VP3-1Ri	GCATGTATATTATAGGTTTCGAATAG
	VP3-2F	AATGGCTGGGTAAAAGAGTATCAC
	VP3-2R	GTCTAGTTTATCATATTTGTCAGTTCCA
	VP3-2Fi	TCACAATTTGATATCGGACAATATA
	VP3-2Ri	GATTATTTCCGGTGGGTTTAG
	VP3-2FO	TAAATGTTGGACCAAGAAATGAATC
	VP3-2RO	ATGATGTCGCAGACTCTGAAAATCT
	VP3-2FN	CAACCATTAAGCAATTTTCAAACGG
	VP3-2RN	GTGATCTCCTAGAAATACTCATGTG
VP4	VP3-3F	ACGTTTCTGCCAACAGATTTT
	VP3-3R	GGTCACATCATGACTAGTGTGTTAAG
	VP3-3Fi	GAACTTAAAGATTTCGATAATTACATC
	VP3-3Ri	AGTTTCTAGCTCACTCAGACATATC
	VP4-1F	GGCTATAAAATGGCTTCACTCA
	VP4-1R	CAACTGTCAAATAAATCTAAATCG
	VP4-1Fi	GACAGCTTCTCACTAATTCATATTC
	VP4-1Ri	AGTGAATTCAATGATACAAAATCAG
	VP4-1F N	ACTCATTTATAGACAGCTTCTCACT
	VP4-1RN	ATAATCATCGTTGGTTGGAAC
	VP4-1FiN	TATGATGAAATAGAGCAAATTGGAT
	VP4-1RiN	TCATTTCCATTATTTGGATTAGCAG
	VP4-2F	TTAGTATACCAGTAGGTGCATGGC
	VP4-2R	TCACATCCTCAATAGCGTTCTCA
	VP4-2Fi	AGTAATGAATGGTGGCGCTG
	VP4-2Ri	TGTAGTATTAAGTGTCAATTCTATTCC
	VP4-2F N	GAGGTGCCGTTTCGTTGC
	VP4-2RN	TCACAACCTTACATTGTAGAATTAAC
	VP4-2FiN	TTCGTATCATTAATTCATTACGGT
	VP4-2RiN	TTCCTTATAATTGGATTATTTTGGT
VP6	VP6-F	GGCTTTAAAACGAAGTCTTCGAC
	VP6-R	CACATCCTCTCACTACATCATTAG
	VP6-Fi	TGGAGGTTCTGTACTCACTGTCA
	VP6-Ri	TTCAGACAGTTACTCTACGTAGCGA

---

VP7	VP6-FiO	GTCTTCGACATGGAGGTTCTGTA
	VP6-Rii	GACAGTTACTCTACGTAGCGAACAT
	VP7-F	GGCTTTAAAAGAGAGAATTTCGGT
	VP7-R	GGTCACATCGTACAATTCTAATCTAAG

---

Fig. S2

Amplification products of all the 11 segments, including 6 structural genes and 5 nonstructural genes. Marker: 10000 bp ladder marker.

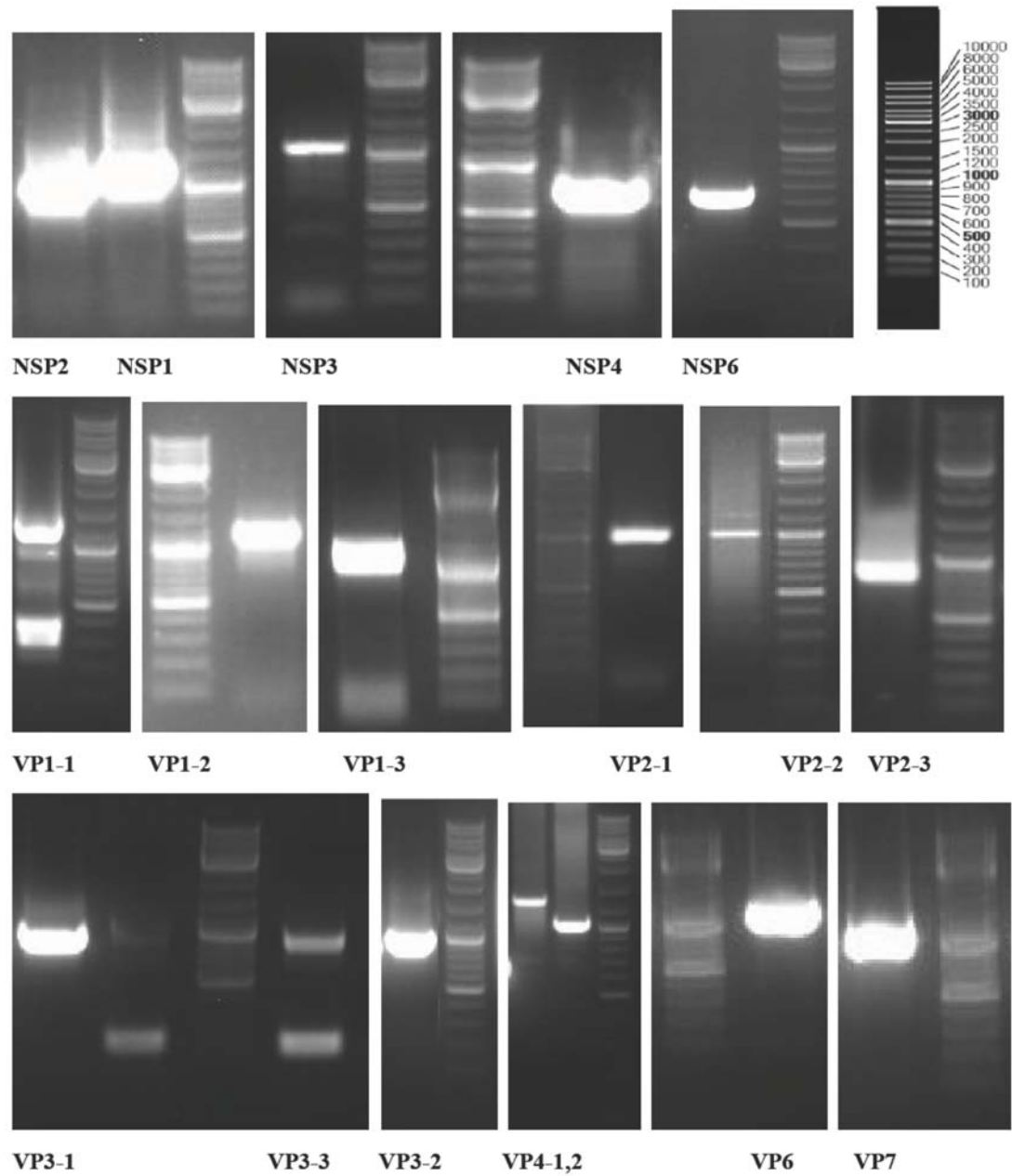


Fig. S3

Plaque of rotavirus ZTR-68. ZTR-68 produced relatively large plaques shown after 5 days. The virus showed a cytopathic effect typical of rotavirus grown in MA104 cells and grew to titers over  $10^6$  pfu per ml. The number represents the dilute multiple.

