

Supplementary

Supplementary Table 11 – distribution of patients recruitment along the study period, overall any by cancer history

	All sample (N=386)	Previous cancer	
		No (N=330)	Yes (N=56)
Start year:			
2004	19 (4.92%)	17 (5.15%)	2 (3.57%)
2005	28 (7.25%)	25 (7.58%)	3 (5.36%)
2006	20 (5.18%)	20 (6.06%)	0 (0%)
2007	18 (4.66%)	15 (4.55%)	3 (5.36%)
2008	52 (13.47%)	46 (13.94%)	6 (10.71%)
2009	65 (16.84%)	54 (16.36%)	11 (19.64%)
2010	51 (13.21%)	41 (12.42%)	10 (17.86%)
2011	35 (9.07%)	32 (9.7%)	3 (5.36%)
2012	46 (11.92%)	38 (11.52%)	8 (14.29%)
2013	27 (6.99%)	22 (6.67%)	5 (8.93%)
2014	25 (6.48%)	20 (6.06%)	5 (8.93%)

Figure S1 – Kaplan Meier curves for the total cohort

Figure 2a - Kaplan-Meier curve for non-BE cancer among BE patients, stratified by HGD and lower grade of dysplasia N=379

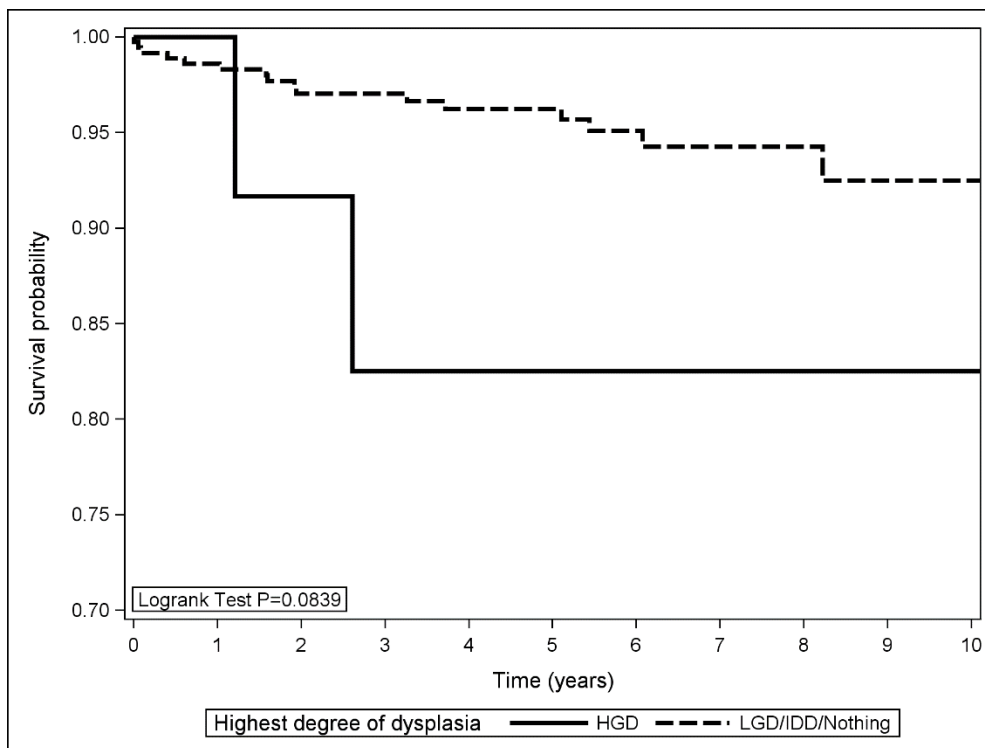


Figure 3a - Kaplan-Meier curve for any type of cancer among BE patients, stratified by HGD and other result (N=386)

